



**28 June  
2023**



# Community Newsletter

## **Muriwai Beach cyclone recovery**

### **Property categorisation process**

We are continuing to work with the Government on what a buyout programme for confirmed Category 3 properties will look like. For updates on this as they come, and more information on the process, see the dedicated section on our website:

<https://www.aucklandcouncil.govt.nz/recovery>.

### **Motutara Road update**

We appreciate that there has been a lot of interest in when Motutara Road will be open. The decision and timing is dependent on the results of GHD's assessment of the slips and stability of the road. We will provide updates as information becomes available.

### **Building assessments update**

Updated placard status numbers in Muriwai as of Wednesday 28 June:

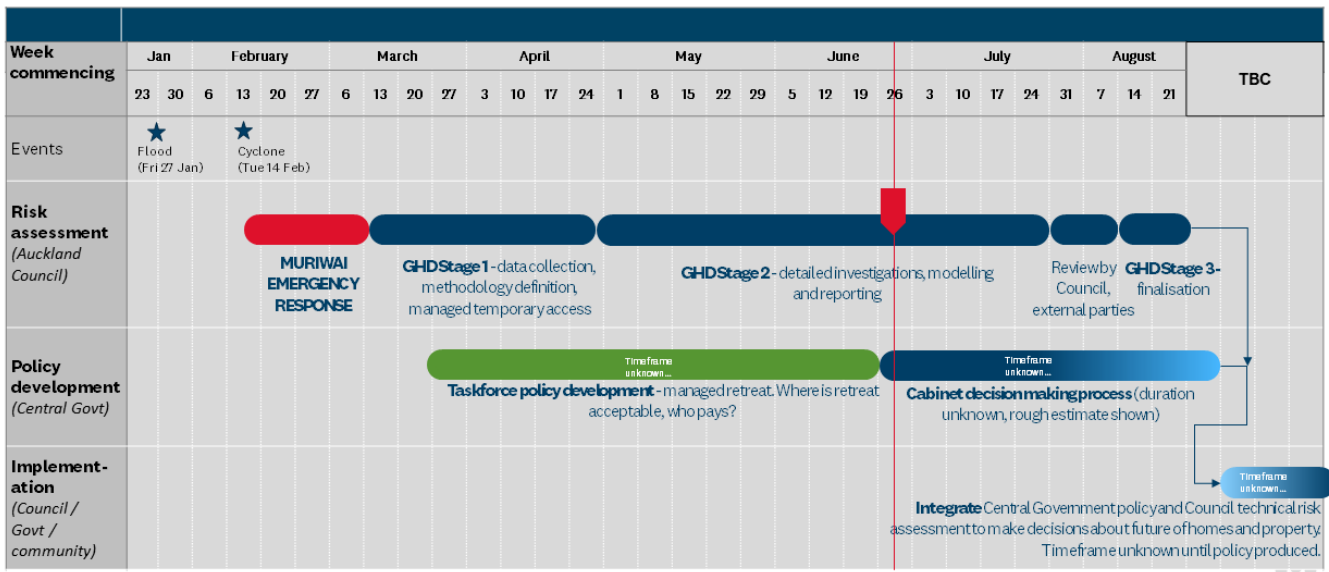
- Red 1 – 97
- Red 2 – 6
- Yellow 1 – 23
- Yellow 2 – 31
- White – 0

There are different reasons why these numbers may differ each week, including:

- If remedial action has been confirmed and approved by the council's compliance team, then the placard can be noted as closed and removed off the list.
- It is identified as a duplicate and removed.
- If was confirmed as one placard for a building with multiple postal addresses but sits in our system as one legal property.

Visit the [Auckland Council website](#) to learn more about what the placard colours mean.

## Geotechnical update – Stage 2



Stage 2 of the GHD geotechnical programme is well underway. Below we have set out the status of components of this stage. The programme was covered in detail in the [27 April newsletter](#). Drilling will commence this week.

- Reviewing current information – on going
- Anecdotal data gathering – completed
- Additional field mapping – completed
- Drilling (subsurface ground investigations) – commencing 28 June onwards, planned end date late July
- Risk assessment – late July
- Report back to Auckland Council – late July
- Review by Auckland Council and external parties – July/early August
- Finalisation – late August

### Drilling – subsurface ground investigations

Drilling contractors will be in Muriwai from this week, with the first holes commencing on Oaia Rd on Thursday 29 June, followed by Motutara Rd and Domain Crescent. There will be one drill rig running during the day for about a month, or until the nine planned drillholes are completed (see fig. 1). It will take about a week to drill the hole at each site, install a sensor, and then backfill the hole. A steel tube will remain in the hole to allow access to the sensor and data.

All this work is being completed on public land or on the road shoulder. There will be stop/go traffic management in place while this work is being carried out (see fig. 2).



Fig 1: Drilling locations (Red dots) - nine drill locations in total.



Fig 2: Traffic Management locations (Green lines) – noting this will not be all locations at once

## A note from the Muriwai Community Recovery Charitable Trust

The Trustees advise that the first round of funding applications are being processed now, and to please apply if you are eligible and have not applied already.

The Trustees advise this funding is available to those with the most urgent needs in the Muriwai community: residents who are unable to return to their homes on Motutara Rd and Domain Crescent because they are still yellow- or red-stickered.

Applicants can be tenants or owners who have suffered financial hardship but they must have been living in the home at the time of Cyclone Gabrielle.

[Here is the link to the application process](#) (scroll down to 'Apply For Support') or you can search for 'Muriwai Community Recovery Charitable Trust'.

## Have we got your details?

If you've received this newsletter via email, then we're all good – we have your correct contact details.

If it has been passed on to you by someone else or you're reading it via a website or social media channel, you can [sign-up](#) to receive this newsletter directly to your inbox.

### Previous newsletters

If you're new to the Muriwai Newsletter, please visit [aucklandcouncil.govt.nz/muriwai-community-newsletters](https://aucklandcouncil.govt.nz/muriwai-community-newsletters) to read previous editions.



### Need help?



Visit: [aucklandcouncil.govt.nz/recovery-muriwai](https://aucklandcouncil.govt.nz/recovery-muriwai)  
Enquire: [muriwai@aucklandcouncil.govt.nz](mailto:muriwai@aucklandcouncil.govt.nz)



Write: Auckland Council, Private Bag 92300  
Victoria Street West, Auckland 1142 | DX CX 10032

