

DRAWING REGISTER		
DRAWING NUMBER	REV	TITLE
1017033.2002-0001	1	DRAWING LIST
1017033.2002-0010	1	OVERALL LAYOUT
1017033.2002-0020	1	EXISTING SITE PLAN
1017033.2002-0040	1	PROPOSED SITE PLAN
1017033.2002-0060	1	CUT AND FILL
1017033.2002-0070	1	CROSS SECTIONS
1017033.2002-2010	1	BLAKE ROAD RESERVE SITE ESTABLISHMENT STAGE 1
1017033.2002-2020	1	LENORE FORESHORE RESERVE SITE ESTABLISHMENT STAGE 1
1017033.2002-2030	1	CMA PREPARATORY WORKS STAGE 1 - OPTION 1
1017033.2002-2031	1	CMA PREPARATORY WORKS STAGE 1 - OPTION 2
1017033.2002-2100	1	COFFER DAM CONSTRUCTION STAGE 2 - OPTION 1
1017033.2002-2101	1	COFFER DAM CONSTRUCTION STAGE 2 - OPTION 2
1017033.2002-2110	1	EASTERN & WESTERN CONNECTION CHAMBERS STAGE 3
1017033.2002-2120	1	EMBANKMENT REMOVAL - STAGE 4, PART 1
1017033.2002-2121	1	EMBANKMENT REMOVAL - STAGE 4, PART 2
1017033.2002-3000	1	STREAM PLAN
1017033.2002-3050	1	DETAILS
1017033.2002-3020	1	LONG SECTION
1017033.2002-3030	1	CROSS SECTIONS - SHEET 1
1017033.2002-3031	1	CROSS SECTIONS - SHEET 2



NOTE: AERIAL IMAGE SOURCED FROM AUCKLAND COUNCIL GIS VIEWER, LICENSED FOR RE-USE UNDER THE CREATIVE COMMONS ATTRIBUTION 4.0 INTERNATIONAL LICENCE. ACCESSED 24 JULY 2024.

LOCATION PLAN
NTS



www.tonkintaylor.co.nz

1	FOR RESOURCE CONSENT	ALPO	ANST	30.10.2024	DESIGNED	PP	OCT.24	DRAWING STATUS RESOURCE CONSENT PROJECT PHASE	CLIENT HEALTHY WATERS PROJECT HARANIA BLUE GREEN NETWORKS STAGE 2 TITLE GENERAL DRAWING LIST		
					DRAWN	ALPO	OCT.24				
					DESIGN CHECKED	ANST	30.10.24				
					DRAWING CHECKED	JABR	30.10.24				
					NOT FOR CONSTRUCTION			THIS DRAWING IS NOT TO BE USED FOR CONSTRUCTION PURPOSES UNLESS SIGNED AS APPROVED			
REV	DESCRIPTION	CAD	CHK	DATE	APPROVED			DATE	SCALE (A1) NTS	DWG No. 1017033.2002-0001	REV 1

NOTES

1. ALL DIMENSIONS ARE IN MILLIMETRES UNLESS NOTED OTHERWISE.

2. COORDINATE DATUM: NZGD2000, NZTM COORDINATES.

3. LEVEL DATUM: NZVD 2016

4. AERIAL IMAGE SOURCED FROM AUCKLAND COUNCIL GIS VIEWER, LICENSED FOR RE-USE UNDER THE CREATIVE COMMONS ATTRIBUTION 4.0 INTERNATIONAL LICENCE. ACCESSED 24 JULY 2024.

5. LOCATION OF ALL EXISTING SERVICES HAVE BEEN SOURCED FROM TOPOGRAPHICAL SURVEY PROVIDED BY THE AUCKLAND COUNCIL GIS GEO MAPS AND FULTON HOGAN RECEIVED 27TH SEPTEMBER 2024.

6. EXISTING CONTOURS HAVE BEEN SOURCED FROM TOPOGRAPHICAL SURVEY PROVIDED BY FULTON HOGAN RECEIVED ON 27TH SEPTEMBER 2024.

7. LOCATION, SIZE AND ALIGNMENT OF THE PROPOSED WW TRANSMISSION LINE, SUPPORT COLUMNS/PIERS AND CHAMBERS PROVIDED BY ACH CONSULTANTS VIA IFC FILE.

8. EXISTING WW TRANSMISSION LINE INVERTS AND LEVELS HAVE BEEN SOURCED FROM THE AUCKLAND COUNCIL GIS GEO MAPS.

9. LOCATIONS OF EXISTING SERVICES MAY VARY FROM THAT SHOWN AND SHOULD BE CHECKED ON SITE.

10. TEMPORARY WORKS IS NOT INCLUDED. REFER TO FULTON HOGAN DESIGN METHODOLOGY.

LEGEND


WW

EXISTING WASTEWATER PIPE

PROPERTY BOUNDARY

EXTENT OF WORKS



<div><div>Tonkin+Taylor</div><div>www.tonkintaylor.co.nz</div></div>				1	FOR RESOURCE CONSENT	ALPO	ANST	30.10.2024	<div>DESIGNED DRAWN DESIGN CHECKED DRAWING CHECKED</div> <div>PP ALPO ANST JABR</div> <div>OCT.24 OCT.24 30.10.24 30.10.24</div>	<div>DRAWING STATUS RESOURCE CONSENT PROJECT PHASE</div> <div>NOT FOR CONSTRUCTION</div> <div>THIS DRAWING IS NOT TO BE USED FOR CONSTRUCTION PURPOSES UNLESS SIGNED AS APPROVED</div>	<div>CLIENT HEALTHY WATERS</div> <div>PROJECT HARANIA BLUE GREEN NETWORKS STAGE 2</div> <div>TITLE TENNESSEE GENERAL ARRANGEMENT OVERALL LAYOUT</div>	<div>SCALE (A1) 1:1000</div> <div>DWG No. 1017033.2002-0010</div> <div>REV 1</div>
REV	DESCRIPTION	CAD	CHK	DATE	APPROVED	DATE						

NOTES

1. AERIAL IMAGE SOURCED FROM AUCKLAND COUNCIL GIS VIEWER, LICENSED FOR RE-USE UNDER THE CREATIVE COMMONS ATTRIBUTION 4.0 INTERNATIONAL LICENCE. ACCESSED 24 JULY 2024.

LEGEND

— 2.0 —

EXISTING MAJOR CONTOUR (2m)

—

EXISTING MINOR CONTOUR (0.25m)

—

PROPERTY BOUNDARY

W

EXISTING WATER PIPE

SW

EXISTING STORMWATER PIPE

WW

EXISTING WASTEWATER PIPE

—

STREAM CENTRE LINE



T+T

Tonkin+Taylor

www.tonkintaylor.co.nz

1	FOR RESOURCE CONSENT	ALPO	ANST	30.10.2024	DESIGNED DRAWN DESIGN CHECKED DRAWING CHECKED	PP ALPO ANST JABR	OCT.24 OCT.24 30.10.24 30.10.24	DRAWING STATUS RESOURCE CONSENT PROJECT PHASE	CLIENT HEALTHY WATERS PROJECT HARANIA BLUE GREEN NETWORKS STAGE 2 TITLE TENNESSEE GENERAL ARRANGEMENT EXISTING SITE PLAN
REV	DESCRIPTION	CAD	CHK	DATE	APPROVED	DATE	THIS DRAWING IS NOT TO BE USED FOR CONSTRUCTION PURPOSES UNLESS SIGNED AS APPROVED		SCALE (A1) 1:250 DWG No. 1017033.2002-0020 REV 1

NOTES

ALL DIMENSIONS ARE IN MILLIMETRES UNLESS NOTED OTHERWISE.
1. COORDINATE DATUM: NZGD2000, NZTM COORDINATES.
2. LEVEL DATUM: NZVD 2016
3. AERIAL IMAGE SOURCED FROM AUCKLAND COUNCIL GIS VIEWER, LICENSED FOR RE-USE UNDER THE CREATIVE COMMONS ATTRIBUTION 4.0 INTERNATIONAL LICENCE. ACCESSED 24 JULY 2024.
5. LOCATION OF ALL EXISTING SERVICES HAVE BEEN SOURCED FROM TOPOGRAPHICAL SURVEY PROVIDED BY THE AUCKLAND COUNCIL GIS GEO MAPS AND FULTON HOGAN RECEIVED 27TH SEPTEMBER 2024.
6. EXISTING CONTOURS HAVE BEEN SOURCED FROM TOPOGRAPHICAL SURVEY PROVIDED BY FULTON HOGAN RECEIVED ON 27TH SEPTEMBER 2024.
7. LOCATION, SIZE AND ALIGNMENT OF THE PROPOSED WW TRANSMISSION LINE, SUPPORT COLUMNS/PIERS AND CHAMBERS PROVIDED BY ACH CONSULTANTS VIA IFC FILE.
8. LOCATION AND EXISTING ALIGNMENT OF THE WW TRANSMISSION LINE WERE SOURCED FROM TOPOGRAPHICAL SURVEY PROVIDED BY THE CONTRACTOR AND FROM THE AUCKLAND COUNCIL GIS GEO MAPS.
9. EXISTING WW TRANSMISSION LINE INVERTS AND LEVELS HAVE BEEN SOURCED FROM THE AUCKLAND COUNCIL GIS GEO MAPS.
10. LOCATIONS OF EXISTING SERVICES MAY VARY FROM THAT SHOWN AND SHOULD BE CHECKED ON SITE.
10. TEMPORARY WORKS IS NOT INCLUDED. REFER TO FULTON HOGAN DESIGN METHODOLOGY.

LEGEND

1.0

DESIGN MAJOR CONTOUR (1m)

0.25m

DESIGN MINOR CONTOUR (0.25m)

2.0

EXISTING MAJOR CONTOUR (2m)

0.25m

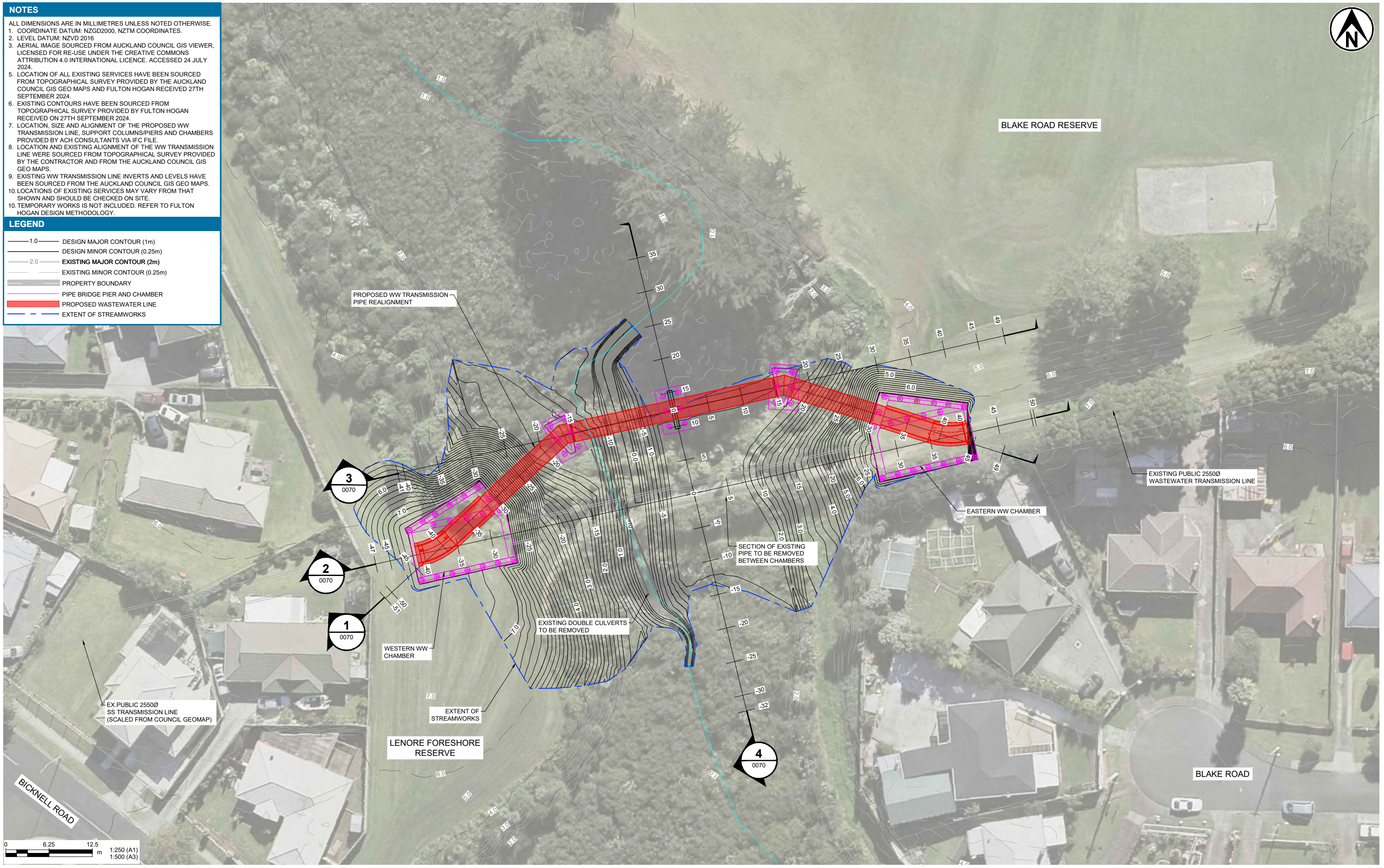
EXISTING MINOR CONTOUR (0.25m)

PROPERTY BOUNDARY

PIPE BRIDGE PIER AND CHAMBER

PROPOSED WASTEWATER LINE

EXTENT OF STREAMWORKS



Tonkin+Taylor
www.tonkintaylor.co.nz

1

FOR RESOURCE CONSENT

CAD

CHK

ANST

30.10.2024

DESIGNED

PP

OCT.24

DRAWN

ALPO

OCT.24

DESIGN CHECKED

ANST

30.10.24

DRAWING CHECKED

JABR

30.10.24

DRAWING STATUS

RESOURCE CONSENT

PROJECT PHASE

CLIENT

HEALTHY WATERS

PROJECT

HARANIA BLUE GREEN NETWORKS STAGE 2

TITLE

TENNESSEE GENERAL ARRANGEMENT
PROPOSED SITE PLAN

SCALE (A1)

1:250

DWG No.

1017033.2002-0040

REV

1

NOT FOR CONSTRUCTION

THIS DRAWING IS NOT TO BE USED FOR CONSTRUCTION PURPOSES UNLESS SIGNED AS APPROVED

ISOPACH CONTOUR LEGEND			
Lower_value		Upper_value	
-7.0	to	-6.0	m
-6.0	to	-5.0	m
-5.0	to	-4.0	m
-4.0	to	-3.0	m
-3.0	to	-2.0	m
-2.0	to	-1.0	m
-1.0	to	-0.2	m
-0.2	to	0.0	m
0.0	to	0.2	m
0.2	to	1.0	m
1.0	to	2.0	m
2.0	to	3.0	m
3.0	to	4.0	m
4.0	to	5.0	m
5.0	to	6.0	m
6.0	to	7.0	m

APPROXIMATE VOLUMES (m³)	
TOTAL CUT	3630
TOTAL FILL	520
TOTAL BALANCE	3110

NOTES

1. ALL DIMENSIONS ARE IN MILLIMETRES UNLESS NOTED OTHERWISE.

2. COORDINATE DATUM: NZGD2000, NZTM COORDINATES.

3. LEVEL DATUM: NZVD 2016

4. AERIAL IMAGE SOURCED FROM AUCKLAND COUNCIL GIS VIEWER, LICENSED FOR RE-USE UNDER THE CREATIVE COMMONS ATTRIBUTION 4.0 INTERNATIONAL LICENCE. ACCESSED 24 JULY 2024.

5. LOCATION OF ALL EXISTING SERVICES HAVE BEEN SOURCED FROM TOPOGRAPHICAL SURVEY PROVIDED BY THE AUCKLAND COUNCIL GIS GEO MAPS AND FULTON HOGAN RECIEVED 27TH SEPTEMBER 2024.

6. EXISTING CONTOURS HAVE BEEN SOURCED FROM TOPOGRAPHICAL SURVEY PROVIDED BY FULTON HOGAN RECIEVED ON 27TH SEPTEMBER 2024.

7. LOCATION, SIZE AND ALIGNMENT OF THE PROPOSED WW TRANSMISSION LINE, SUPPORT COLUMNS/PIERS AND CHAMBERS PROVIDED BY ACH CONSULTANTS VIA IFC FILE.

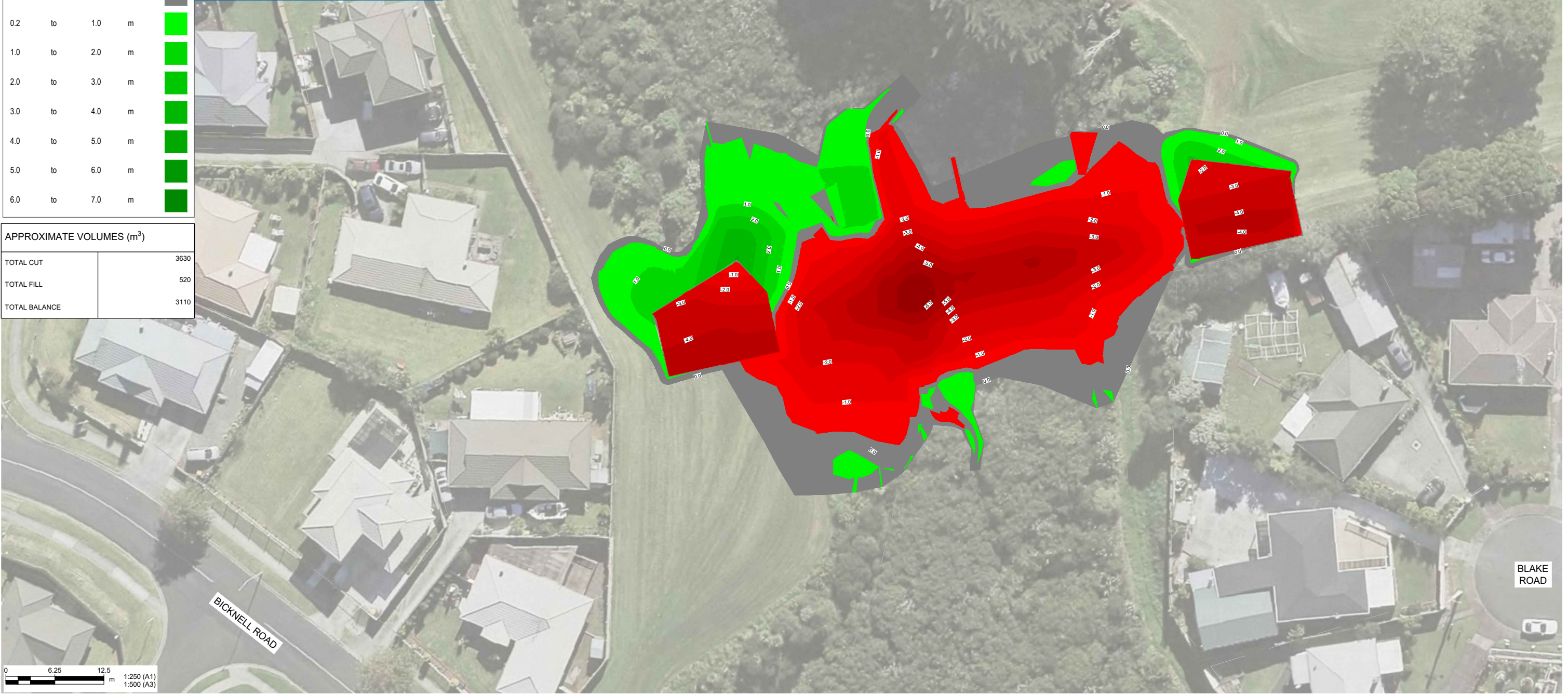
8. LOCATION AND EXISTING ALIGNMENT OF THE WW TRANSMISSION LINE WERE SOURCED FROM TOPOGRAPHICAL SURVEY PROVIDED BY THE CONTRACTOR AND FROM THE AUCKLAND COUNCIL GIS GEO MAPS.

9. EXISTING WW TRANSMISSION LINE INVERTS AND LEVELS HAVE BEEN SOURCED FROM THE AUCKLAND COUNCIL GIS GEO MAPS.

10. LOCATIONS OF EXISTING SERVICES MAY VARY FROM THAT SHOWN AND SHOULD BE CHECKED ON SITE.

LEGEND

PROPERTY BOUNDARY



Tonkin+Taylor

www.tonkintaylor.co.nz

1

FOR RESOURCE CONSENT

CMAN

ANST

30.10.2024

DESIGNED

PP

OCT.24

DRAWN

CMAN

OCT.24

DESIGN CHECKED

ANST

30.10.24

DRAWING CHECKED

JABR

30.10.24

DRAWING STATUS

RESOURCE CONSENT

PROJECT PHASE

CLIENT

HEALTHY WATERS

PROJECT

HARANIA BLUE GREEN NETWORKS STAGE 2

TITLE

TENNESSEE AVENUE CUT AND FILL

SCALE (A1)

1:250

DWG No.

1017033.2002-0060

REV

1

NOT FOR CONSTRUCTION

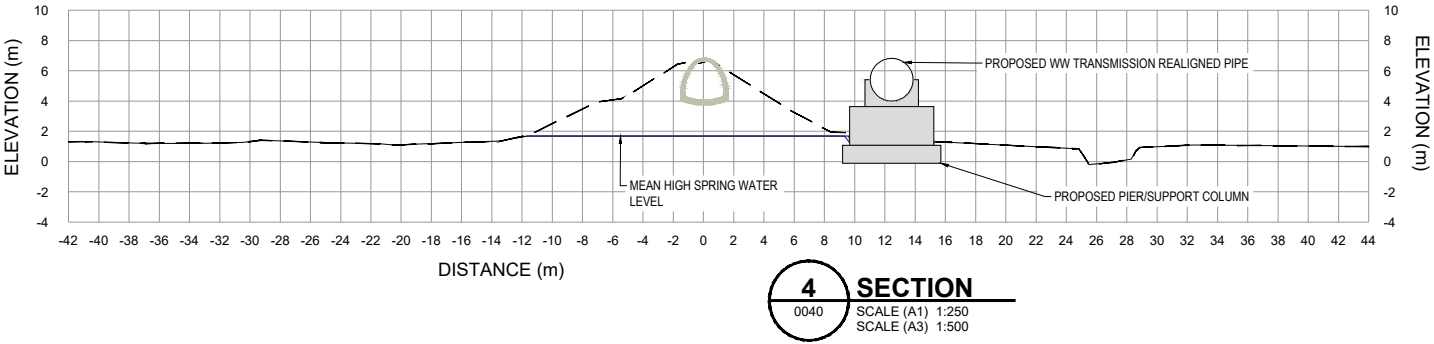
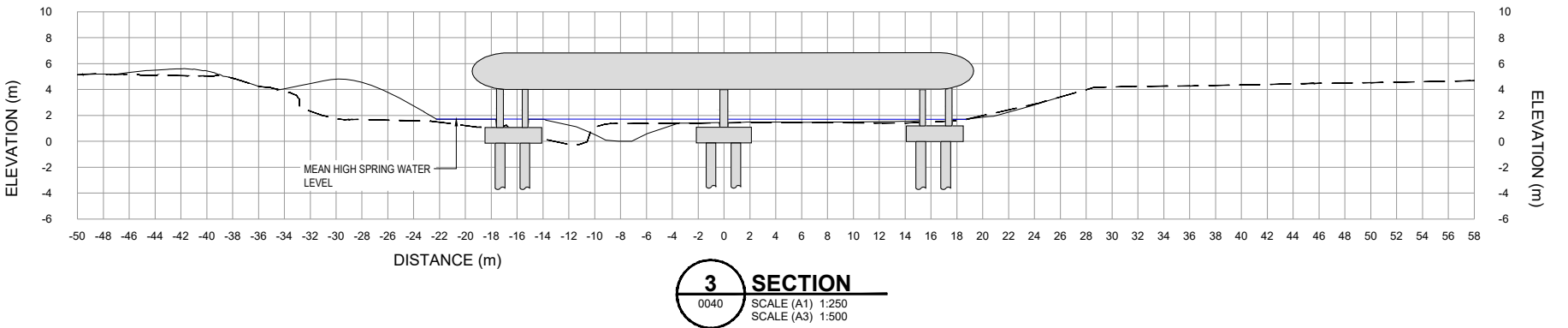
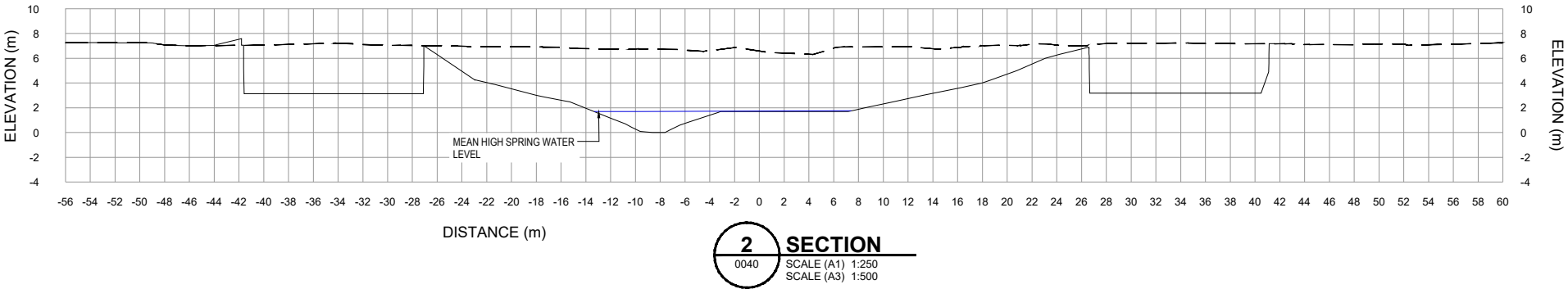
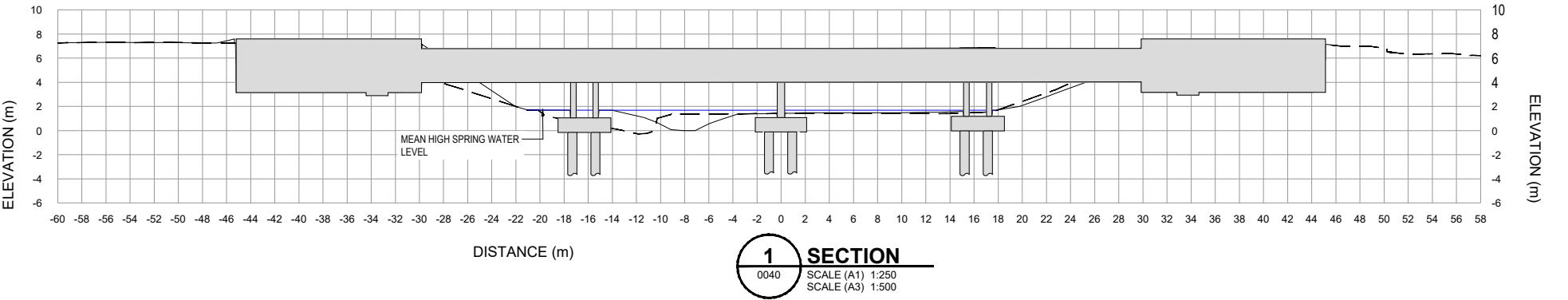
THIS DRAWING IS NOT TO BE USED FOR CONSTRUCTION PURPOSES UNLESS SIGNED AS APPROVED

LEGEND

DESIGN SURFACE

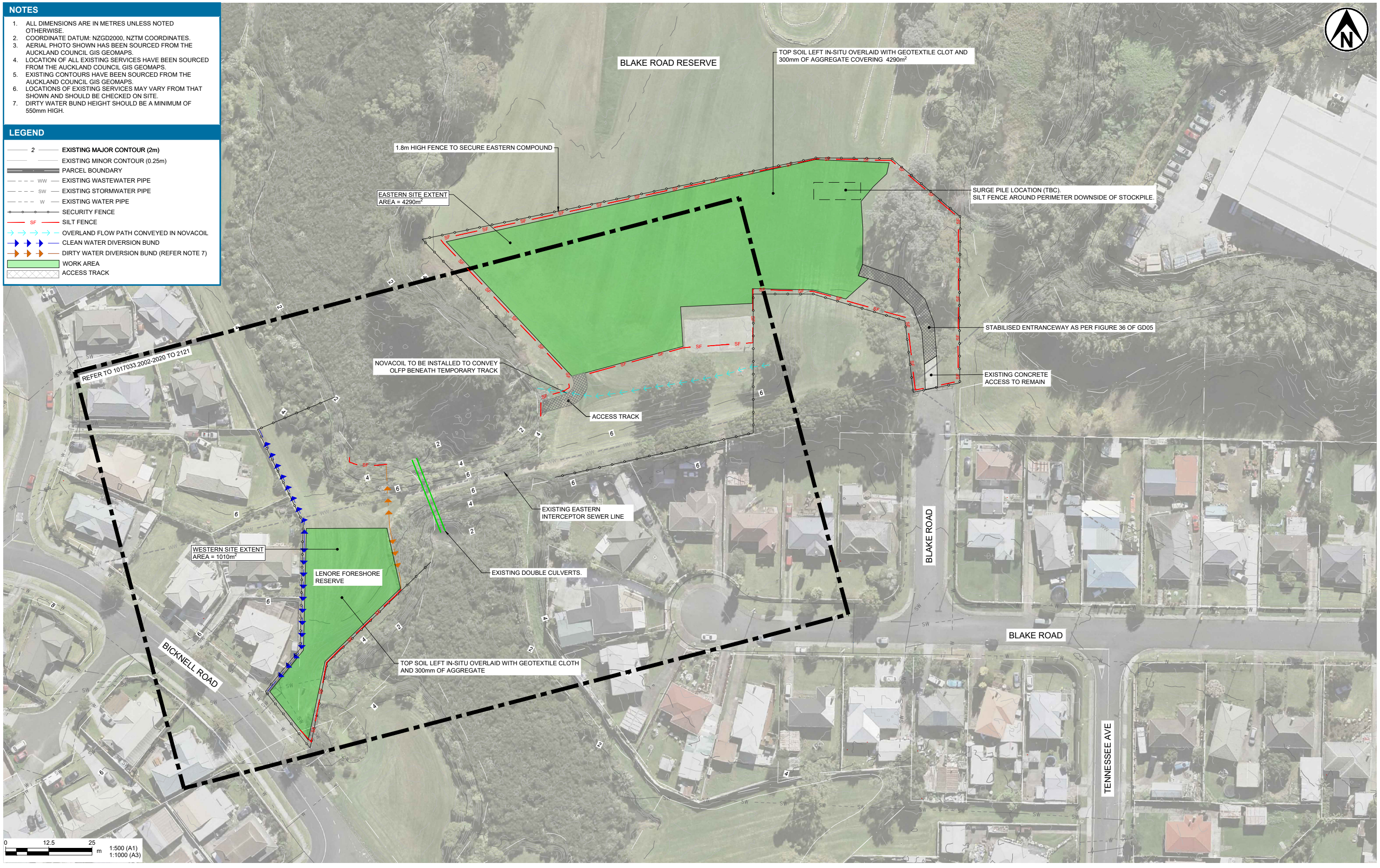
EXISTING GROUND

MEAN HIGH WATER SPRING LEVEL



1	FOR RESOURCE CONSENT	ALPO	ANST	25.10.2024	DESIGNED	PP	OCT.24	DRAWING STATUS
					DRAWN	ALPO	OCT.24	RESOURCE CONSENT
					DESIGN CHECKED	ANST	25.10.24	PROJECT PHASE
					DRAWING CHECKED	JABR	25.10.24	
					NOT FOR CONSTRUCTION			
REV	DESCRIPTION	CAD	CHK	DATE	APPROVED	DATE		

CLIENT	HEALTHY WATERS
PROJECT	HARANIA BLUE GREEN NETWORKS STAGE 2
TITLE	TENNESSEE GENERAL ARRANGEMENT CROSS SECTIONS
SCALE (A1)	1:250
DWG No.	1017033.2002-0070
REV	1





NOTES

1. ALL DIMENSIONS ARE IN METRES UNLESS NOTED OTHERWISE.

2. COORDINATE DATUM: NZGD2000, NZTM COORDINATES.

3. AERIAL PHOTO SHOWN HAS BEEN SOURCED FROM THE AUCKLAND COUNCIL GIS GEOMAPS.

4. LOCATION OF ALL EXISTING SERVICES HAVE BEEN SOURCED FROM THE AUCKLAND COUNCIL GIS GEOMAPS.

5. EXISTING CONTOURS HAVE BEEN SOURCED FROM THE AUCKLAND COUNCIL GIS GEOMAPS.

6. LOCATIONS OF EXISTING SERVICES MAY VARY FROM THAT SHOWN AND SHOULD BE CHECKED ON SITE.

7. DIRTY WATER BUND HEIGHT SHALL BE A MINIMUM OF 550mm HIGH.

LEGEND

2

EXISTING MAJOR CONTOUR (2m)

EXISTING MINOR CONTOUR (0.25m)

PARCEL BOUNDARY

WW

EXISTING WASTEWATER PIPE

SW

EXISTING STORMWATER PIPE

W

EXISTING WATER PIPE

HIGH FENCE

SF

SILT FENCE

OVERLAND FLOW PATH CONVEYED IN NOVACOIL

CLEAN WATER DIVERSION BUND

DIRTY WATER DIVERSION BUND (REFER NOTE 7)

ACCESS TRACK

EXTENT OF ACCESS STAGING

COFFER DAMS

WORK AREA



<div><div>T+T</div><div>Tonkin+Taylor</div><div>www.tonkintaylor.co.nz</div></div>		1 FOR RESOURCE CONSENT		ALPO	SL	25.10.2024	DESIGNED DRAWN DESIGN CHECKED DRAWING CHECKED	PEHA CALI SL JC	SEPT.24 SEPT.24 25.10.24 25.10.24	DRAWING STATUS RESOURCE CONSENT PROJECT PHASE	CLIENT HEALTHY WATERS PROJECT HARANIA BLUE GREEN NETWORKS STAGE 2 TITLE HARANIA TENNESSEE BRIDGE ESCP CMA PREPARATORY WORKS STAGE 1 - OPTION 1
REV DESCRIPTION		CAD CHK		DATE		APPROVED		DATE		SCALE (A1) 1:250 DWG No. 1017033.2002-2030 REV 1	
						NOT FOR CONSTRUCTION		THIS DRAWING IS NOT TO BE USED FOR CONSTRUCTION PURPOSES UNLESS SIGNED AS APPROVED			

NOTES

1. ALL DIMENSIONS ARE IN METRES UNLESS NOTED OTHERWISE.

2. COORDINATE DATUM: NZGD2000, NZTM COORDINATES.

3. AERIAL PHOTO SHOWN HAS BEEN SOURCED FROM THE AUCKLAND COUNCIL GIS GEOMAPS.

4. LOCATION OF ALL EXISTING SERVICES HAVE BEEN SOURCED FROM THE AUCKLAND COUNCIL GIS GEOMAPS.

5. EXISTING CONTOURS HAVE BEEN SOURCED FROM THE AUCKLAND COUNCIL GIS GEOMAPS.

6. LOCATIONS OF EXISTING SERVICES MAY VARY FROM THAT SHOWN AND SHOULD BE CHECKED ON SITE.

7. DIRTY WATER BUND HEIGHT SHALL BE A MINIMUM OF 550mm HIGH.

LEGEND

2

EXISTING MAJOR CONTOUR (2m)

EXISTING MINOR CONTOUR (0.25m)

PARCEL BOUNDARY

WW

EXISTING WASTEWATER PIPE

SW

EXISTING STORMWATER PIPE

W

EXISTING WATER PIPE

HIGH FENCE

SF

SILT FENCE

OVERLAND FLOW PATH CONVEYED IN NOVACOIL

CLEAN WATER DIVERSION BUND

DIRTY WATER DIVERSION BUND (REFER NOTE 7)

ACCESS TRACK

WORK AREA



1	FOR RESOURCE CONSENT	ALPO	SL	25.10.2024	DESIGNED	PEHA	SEP.24	DRAWING STATUS RESOURCE CONSENT PROJECT PHASE
					DRAWN	ALPO	SEP.24	
					DESIGN CHECKED	SL	25.10.24	
					DRAWING CHECKED	JC	25.10.24	
					NOT FOR CONSTRUCTION			
REV	DESCRIPTION	CAD	CHK	DATE	APPROVED		DATE	

CLIENT	HEALTHY WATERS
PROJECT	HARANIA BLUE GREEN NETWORKS STAGE 2
TITLE	HARANIA TENNESSEE BRIDGE ESCP CMA PREPARATORY WORKS STAGE 1 - OPTION 2
SCALE (A1)	1:250
DWG No.	1017033.2002-2031
REV	1

NOTES

1. ALL DIMENSIONS ARE IN METRES UNLESS NOTED OTHERWISE.

2. COORDINATE DATUM: NZGD2000, NZTM COORDINATES.

3. AERIAL PHOTO SHOWN HAS BEEN SOURCED FROM THE AUCKLAND COUNCIL GIS GEOMAPS.

4. LOCATION OF ALL EXISTING SERVICES HAVE BEEN SOURCED FROM THE AUCKLAND COUNCIL GIS GEOMAPS.

5. EXISTING CONTOURS HAVE BEEN SOURCED FROM THE AUCKLAND COUNCIL GIS GEOMAPS.

6. LOCATIONS OF EXISTING SERVICES MAY VARY FROM THAT SHOWN AND SHOULD BE CHECKED ON SITE.

7. DIRTY WATER BUND HEIGHT SHALL BE A MINIMUM OF 550mm HIGH.

LEGEND

2

EXISTING MAJOR CONTOUR (2m)

EXISTING MINOR CONTOUR (0.25m)

PARCEL BOUNDARY

EXISTING WASTEWATER PIPE

EXISTING STORMWATER PIPE

EXISTING WATER PIPE

HIGH FENCE

SF

SILT FENCE

→→→

OVERLAND FLOW PATH CONVEYED IN NOVACOIL

→→→

CLEAN WATER DIVERSION BUND

→→→

DIRTY WATER DIVERSION BUND (REFER NOTE 7)

ACCESS TRACK

EXTENT OF ACCESS STAGING

COFFER DAMS

WORK AREA



<div><div><div>T+T</div><div>Tonkin+Taylor</div></div><div>www.tonkintaylor.co.nz</div></div>		1	FOR RESOURCE CONSENT	ALPO	SL	25.10.2024	DESIGNED	PEHA	SEPT.24	DRAWING STATUS	RESOURCE CONSENT	PROJECT PHASE	CLIENT HEALTHY WATERS	PROJECT BLUE GREEN NETWORKS - HARANIA UPGRADES	TITLE HARANIA TENNESSEE BRIDGE ESCP COFFER DAM CONSTRUCTION STAGE 2 - OPTION 1	SCALE (A1) 1:250	DWG No. 1017033.2002-2100	REV 1
							DRAWN	CALI	SEPT.24									
							DESIGN CHECKED	SL	25.10.24									
							DRAWING CHECKED	JC	25.10.24									
							NOT FOR CONSTRUCTION			THIS DRAWING IS NOT TO BE USED FOR CONSTRUCTION PURPOSES UNLESS SIGNED AS APPROVED								
REV DESCRIPTION				CAD	CHK	DATE	APPROVED		DATE									

NOTES

1. ALL DIMENSIONS ARE IN METRES UNLESS NOTED OTHERWISE.

2. COORDINATE DATUM: NZGD2000, NZTM COORDINATES.

3. AERIAL PHOTO SHOWN HAS BEEN SOURCED FROM THE AUCKLAND COUNCIL GIS GEOMAPS.

4. LOCATION OF ALL EXISTING SERVICES HAVE BEEN SOURCED FROM THE AUCKLAND COUNCIL GIS GEOMAPS.

5. EXISTING CONTOURS HAVE BEEN SOURCED FROM THE AUCKLAND COUNCIL GIS GEOMAPS.

6. LOCATIONS OF EXISTING SERVICES MAY VARY FROM THAT SHOWN AND SHOULD BE CHECKED ON SITE.

7. DIRTY WATER BUND HEIGHT SHALL BE A MINIMUM OF 550mm HIGH.

LEGEND

2

EXISTING MAJOR CONTOUR (2m)

EXISTING MINOR CONTOUR (0.25m)

PARCEL BOUNDARY

WW

EXISTING WASTEWATER PIPE

SW

EXISTING STORMWATER PIPE

W

EXISTING WATER PIPE

—●—

HIGH FENCE

—SF—

SILT FENCE

→→→

OVERLAND FLOW PATH CONVEYED IN NOVACOIL

→→→

CLEAN WATER DIVERSION BUND

→→→

DIRTY WATER DIVERSION BUND (REFER NOTE 7)

▨

ACCESS TRACK

—

COFFER DAMS

WORK AREA



<div><div>T+T</div><div>Tonkin+Taylor</div><div>www.tonkintaylor.co.nz</div></div>		1	FOR RESOURCE CONSENT	ALPO	SL	25.10.2024	DESIGNED	PEHA	SEPT.24	DRAWING STATUS RESOURCE CONSENT PROJECT PHASE	
							DRAWN	ALPO	SEPT.24		
							DESIGN CHECKED	SL	25.10.24		
							DRAWING CHECKED	JC	25.10.24		
							NOT FOR CONSTRUCTION			THIS DRAWING IS NOT TO BE USED FOR CONSTRUCTION PURPOSES UNLESS SIGNED AS APPROVED	
REV	DESCRIPTION			CAD	CHK	DATE	APPROVED		DATE		
CLIENT HEALTHY WATERS											
PROJECT BLUE GREEN NETWORKS - HARANIA UPGRADES											
TITLE HARANIA TENNESSEE BRIDGE ESCP COFFER DAM CONSTRUCTION STAGE 2 - OPTION 2											
SCALE (A1) 1:250				DWG No. 1017033.2002-2101				REV 1			

NOTES

1. ALL DIMENSIONS ARE IN METRES UNLESS NOTED OTHERWISE.

2. COORDINATE DATUM: NZGD2000, NZTM COORDINATES.

3. AERIAL PHOTO SHOWN HAS BEEN SOURCED FROM THE AUCKLAND COUNCIL GIS GEOMAPS.

4. LOCATION OF ALL EXISTING SERVICES HAVE BEEN SOURCED FROM THE AUCKLAND COUNCIL GIS GEOMAPS.

5. EXISTING CONTOURS HAVE BEEN SOURCED FROM THE AUCKLAND COUNCIL GIS GEOMAPS.

6. LOCATIONS OF EXISTING SERVICES MAY VARY FROM THAT SHOWN AND SHOULD BE CHECKED ON SITE.

7. DIRTY WATER BUND HEIGHT SHOULD BE A MINIMUM OF 550mm HIGH.

LEGEND

2

EXISTING MAJOR CONTOUR (2m)

EXISTING MINOR CONTOUR (0.25m)

PARCEL BOUNDARY

WW

EXISTING WASTEWATER PIPE

SW

EXISTING STORMWATER PIPE

W

EXISTING WATER PIPE

SECURITY FENCE

SF

SILT FENCE

OVERLAND FLOW PATH CONVEYED IN NOVACOIL

CLEAN WATER DIVERSION BUND

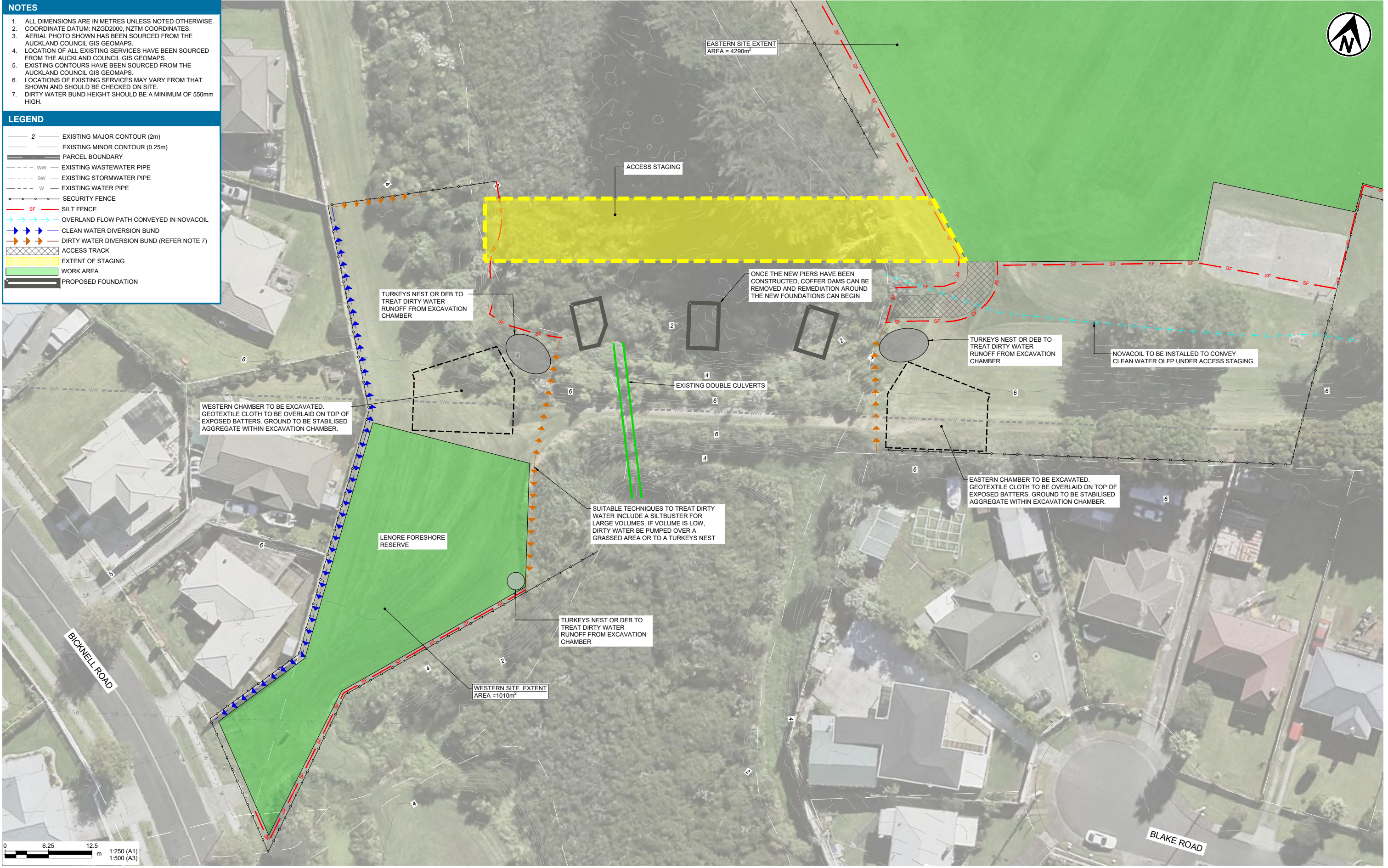
DIRTY WATER DIVERSION BUND (REFER NOTE 7)

ACCESS TRACK

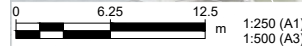
EXTENT OF STAGING

WORK AREA

PROPOSED FOUNDATION



<div><div><div></div></div><div>Tonkin+Taylor</div><div>www.tonkintaylor.co.nz</div></div>				1	PRELIMINARY DESIGN	ALPO	SL	25.10.2024	DESIGNED	PEHA	SEPT.24	DRAWING STATUS RESOURCE CONSENT PROJECT PHASE	CLIENT HEALTHY WATERS PROJECT HARANIA BLUE GREEN NETWORKS STAGE 2 TITLE HARANIA TENNESSEE BRIDGE ESCP EASTERN & WESTERN CONNECTION CHAMBERS STAGE 3	
									DRAWN	CALI	SEPT.24			
									DESIGN CHECKED	SL	25.10.24			
									DRAWING CHECKED	JC	25.10.24			
									NOT FOR CONSTRUCTION					THIS DRAWING IS NOT TO BE USED FOR CONSTRUCTION PURPOSES UNLESS SIGNED AS APPROVED
REV		DESCRIPTION		CAD	CHK	DATE		APPROVED		DATE		SCALE (A1) 1:250	DWG No. 1017033.2002-2110	REV 1



1	FOR RESOURCE CONSENT	ALPO	SL	25.10.2024	DESIGNED DRAWN DESIGN CHECKED DRAWING CHECKED			PEHA CALI SL JC	SEPT.24 SEPT.24 25.10.24 25.10.24	DRAWING STATUS RESOURCE CONSENT PROJECT PHASE	CLIENT HEALTHY WATERS		
					PROJECT HARANIA BLUE GREEN NETWORKS STAGE								
					TITLE HARANIA TENNESSEE BRIDGE ESCP								
					EMBANKMENT REMOVAL - STAGE 4, PART 1								
NOT FOR CONSTRUCTION					THIS DRAWING IS NOT TO BE USED FOR CONSTRUCTION PURPOSES UNLESS SIGNED AS APPROVED			SCALE (A1) 1:250					
DWG No. 1017033.2002-2120					REV 1								
REV	DESCRIPTION	CAD	CHK	DATE	APPROVED		DATE						

- NOTES
1. ALL DIMENSIONS ARE IN MILLIMETRES UNLESS NOTED OTHERWISE.

2. COORDINATE DATUM: NZGD2000, NZTM COORDINATES.

3. LEVEL DATUM: NZVD 2016

4. AERIAL PHOTO SHOWN HAS BEEN SOURCED FROM THE AUCKLAND COUNCIL GIS GEO MAPS.

5. LOCATION OF ALL EXISTING SERVICES HAVE BEEN SOURCED FROM TOPOGRAPHICAL SURVEY PROVIDED BY THE CONTRACTOR AND FROM THE AUCKLAND COUNCIL GIS GEO MAPS.

6. EXISTING CONTOURS HAVE BEEN SOURCED FROM TOPOGRAPHICAL SURVEY PROVIDED BY THE CONTRACTOR AND FROM THE AUCKLAND COUNCIL GIS GEO MAPS.

7. LOCATION, SIZE AND ALIGNMENT OF THE PROPOSED WW TRANSMISSION LINE, SUPPORT COLUMNS/PIERS AND CHAMBERS PROVIDED BY ACH CONSULTANTS VIA IFC FILE.

8. LOCATION AND EXISTING ALIGNMENT OF THE WW TRANSMISSION LINE WERE SOURCED FROM TOPOGRAPHICAL SURVEY PROVIDED BY THE CONTRACTOR AND FROM THE AUCKLAND COUNCIL GIS GEO MAPS.

9. EXISTING WW TRANSMISSION LINE INVERTS AND LEVELS HAVE BEEN SOURCED FROM THE AUCKLAND COUNCIL GIS GEO MAPS.

10. LOCATIONS OF EXISTING SERVICES MAY VARY FROM THAT SHOWN AND SHOULD BE CHECKED ON SITE.

- LEGEND
- 1.0

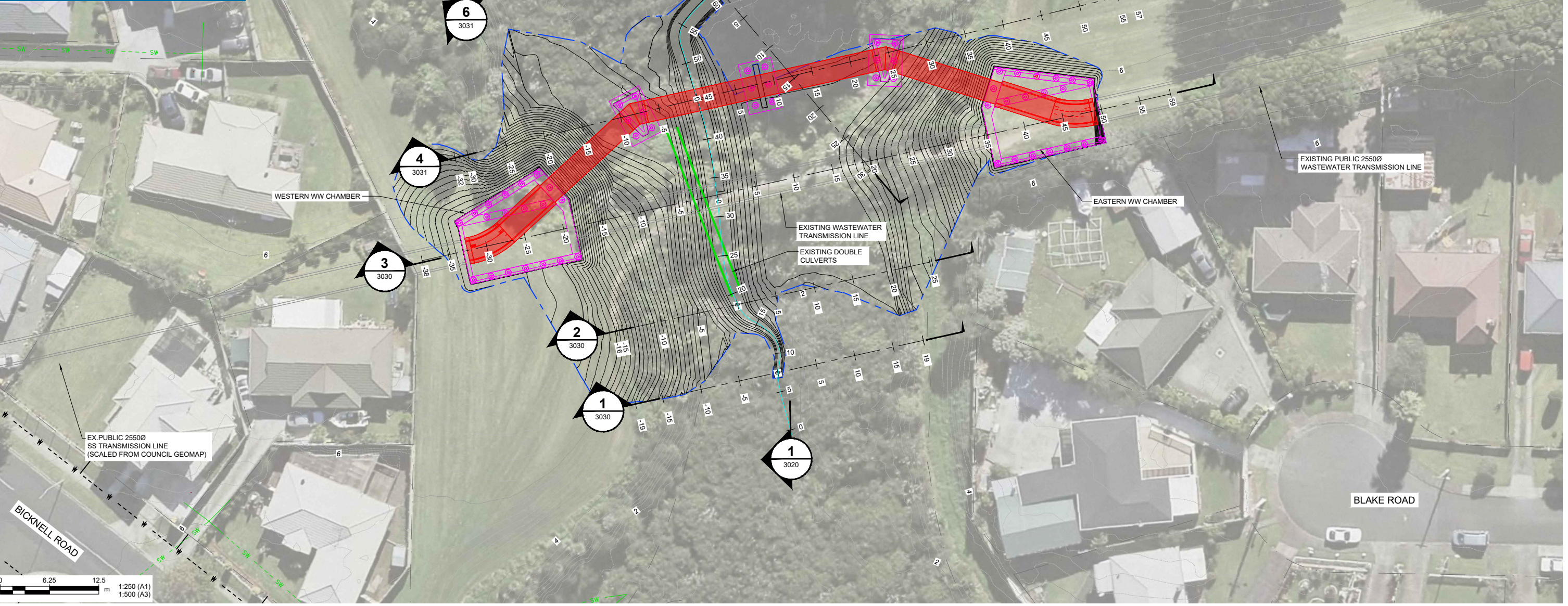
DESIGN MAJOR CONTOUR (1m)
- DESIGN MINOR CONTOUR (0.2m)
- 2

EXISTING MAJOR CONTOUR (2m)
- EXISTING MINOR CONTOUR (0.25m)
- PROPERTY BOUNDARY
- STREAM CENTRE LINE
- WW

EXISTING WASTEWATER PIPE
- SW

EXISTING STORMWATER PIPE
- SW

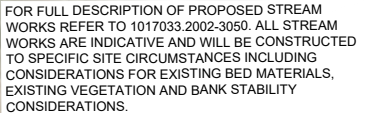
STORMWATER PIPE ABANDON
- PIPE BRIDGE PIER AND CHAMBER
- PROPOSED WASTEWATER LINE
- EXTENT OF STREAMWORKS



www.tonkintaylor.co.nz

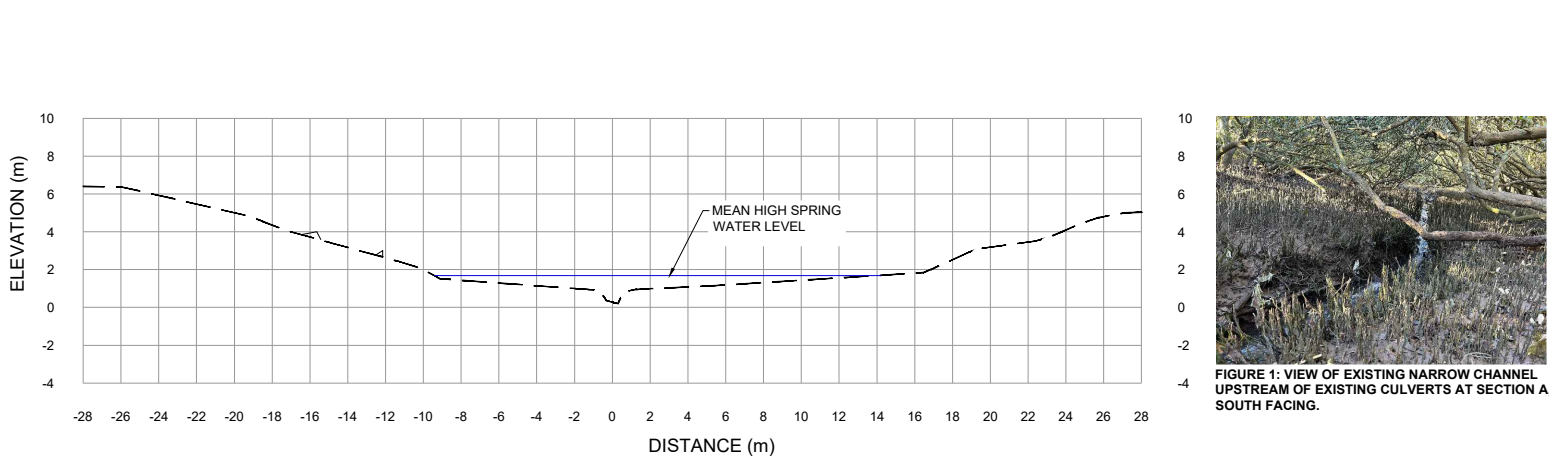
1	FOR RESOURCE CONSENT	ALPO	ANST	25.10.2024	DESIGNED	KASC	SEP.24	DRAWING STATUS RESOURCE CONSENT PROJECT PHASE
					DRAWN	ALPO	SEP.24	
					DESIGN CHECKED	ANST	25.10.24	
					DRAWING CHECKED	TCOS	25.10.24	
					NOT FOR CONSTRUCTION			
REV	DESCRIPTION	CAD	CHK	DATE	APPROVED	DATE		

CLIENT	HEALTHY WATERS
PROJECT	HARANIA BLUE GREEN NETWORKS STAGE 2
TITLE	TENNESSEE STREAM WORKS STREAM PLAN
SCALE (A1)	1:250
DWG No.	1017033.2002-3000
REV	1

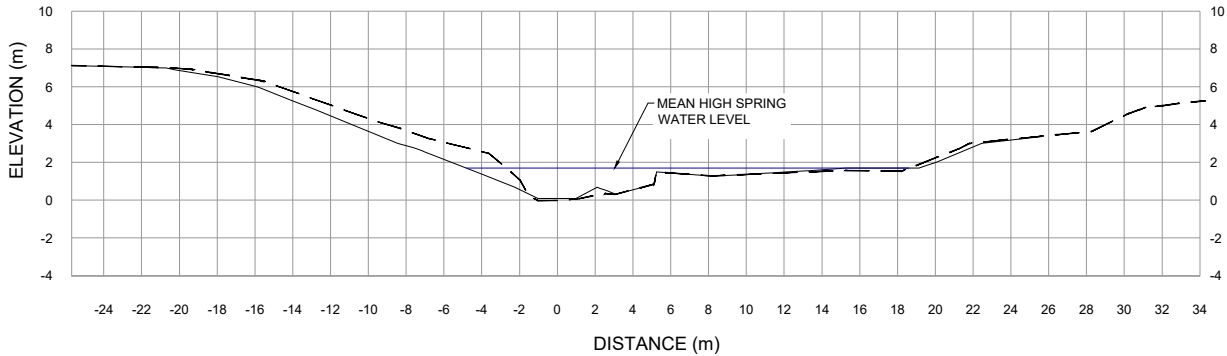


1:200

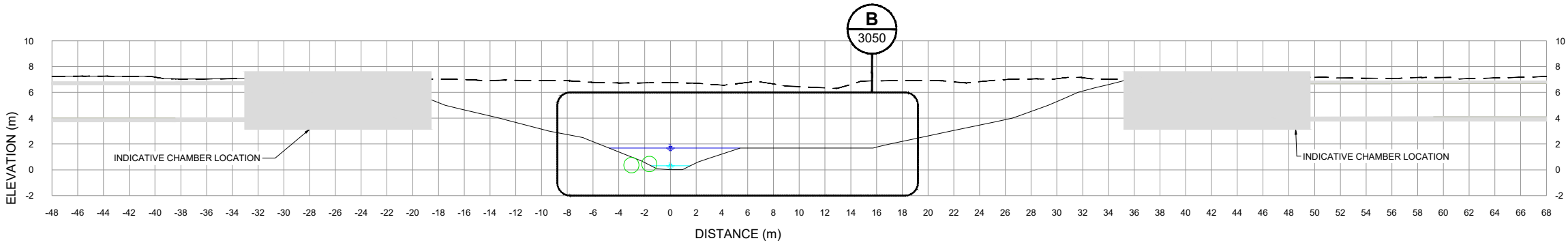




1 SECTION
3000 SCALE (A1) 1:200
SCALE (A3) 1:400



2 SECTION
3000 SCALE (A1) 1:200
SCALE (A3) 1:400



3 SECTION
3000 SCALE (A1) 1:200
SCALE (A3) 1:400



www.tonkintaylor.co.nz

1	FOR RESOURCE CONSENT	ALPO	ANST	25.10.2024	DESIGNED	KASC	SEP.24	DRAWING STATUS RESOURCE CONSENT PROJECT PHASE
					DRAWN	ALPO	SEP.24	
					DESIGN CHECKED	ANST	25.10.24	
					DRAWING CHECKED	TCOS	25.10.24	
					NOT FOR CONSTRUCTION			
REV	DESCRIPTION	CAD	CHK	DATE	APPROVED	DATE		

CLIENT	HEALTHY WATERS
PROJECT	HARANIA BLUE GREEN NETWORKS STAGE 2
TITLE	TENNESSEE STREAM WORKS CROSS SECTIONS - SHEET 1
SCALE (A1)	1:200
DWG No.	1017033.2002-3030
REV	1

NOTES

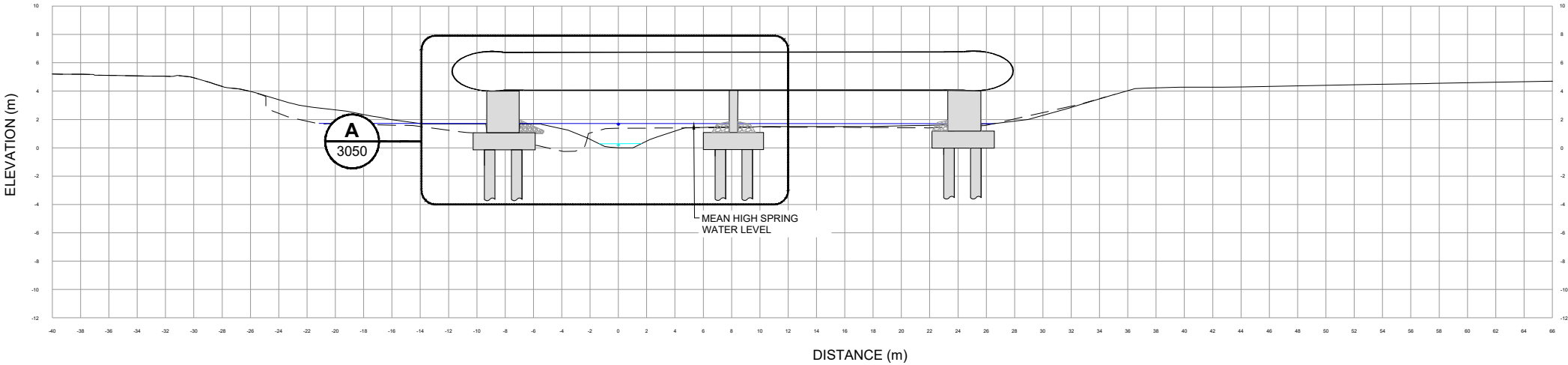
1. ALL STREAM WORKS ARE INDICATIVE AND WILL BE CONSTRUCTED TO SPECIFIC SITE CIRCUMSTANCES INCLUDING CONSIDERATION FOR EXISTING BED MATERIALS, EXISTING VEGETATION, AND BANK STABILITY.

LEGEND

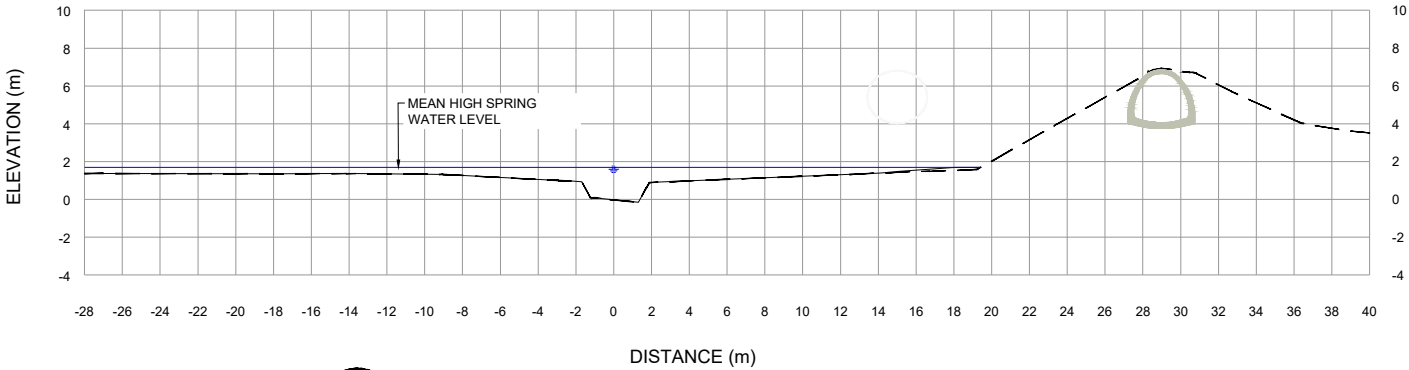
DESIGN SURFACE

EXISTING GROUND

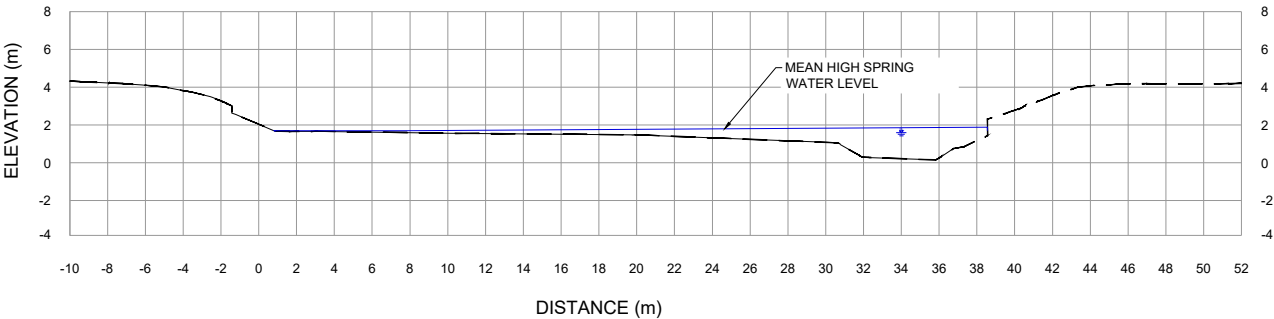
MEAN HIGH WATER SPRING LEVEL



4 SECTION
3000 1:200



5 SECTION
3000 1:200



6 SECTION
3000 1:200



FIGURE 1:DOWNSTREAM VIEW TAKEN FROM ABOVE EMBANKMENT, NORTH FACING.



FIGURE 3: VIEW OF EXISTING DOWNSTREAM SCOUR POOL.



FIGURE 2: VIEW OF EXISTING DOWNSTREAM CHANNEL, NORTH FACING.



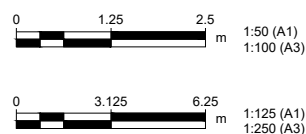
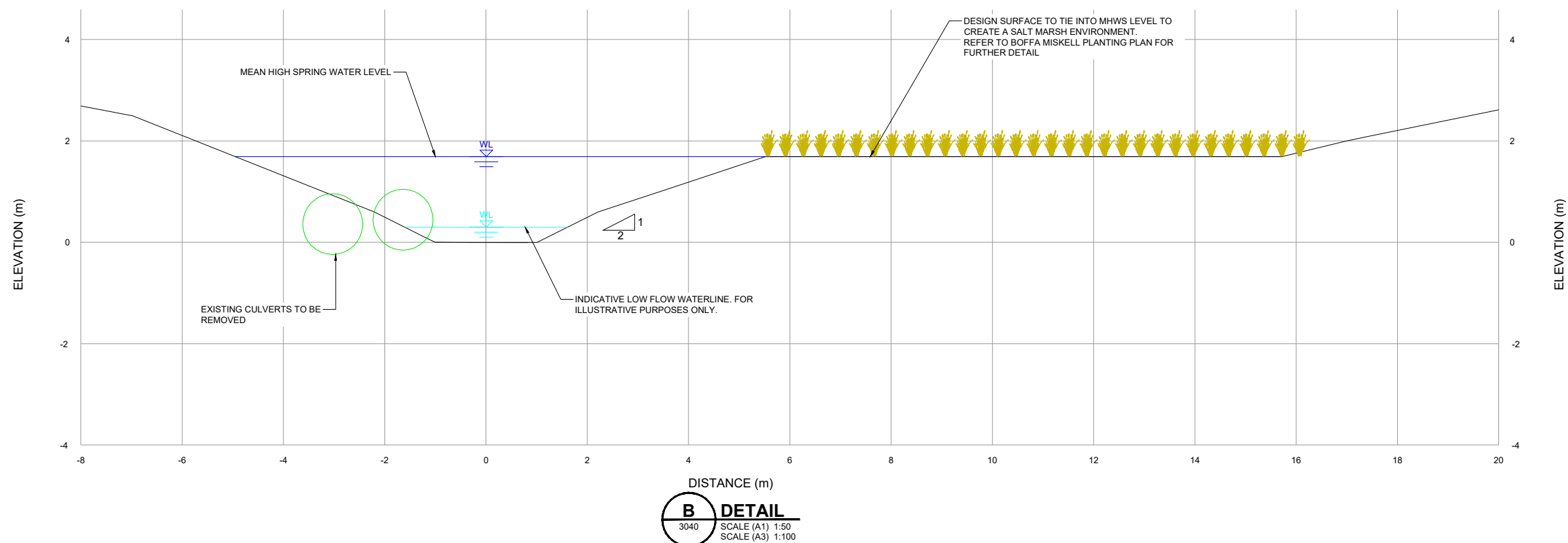
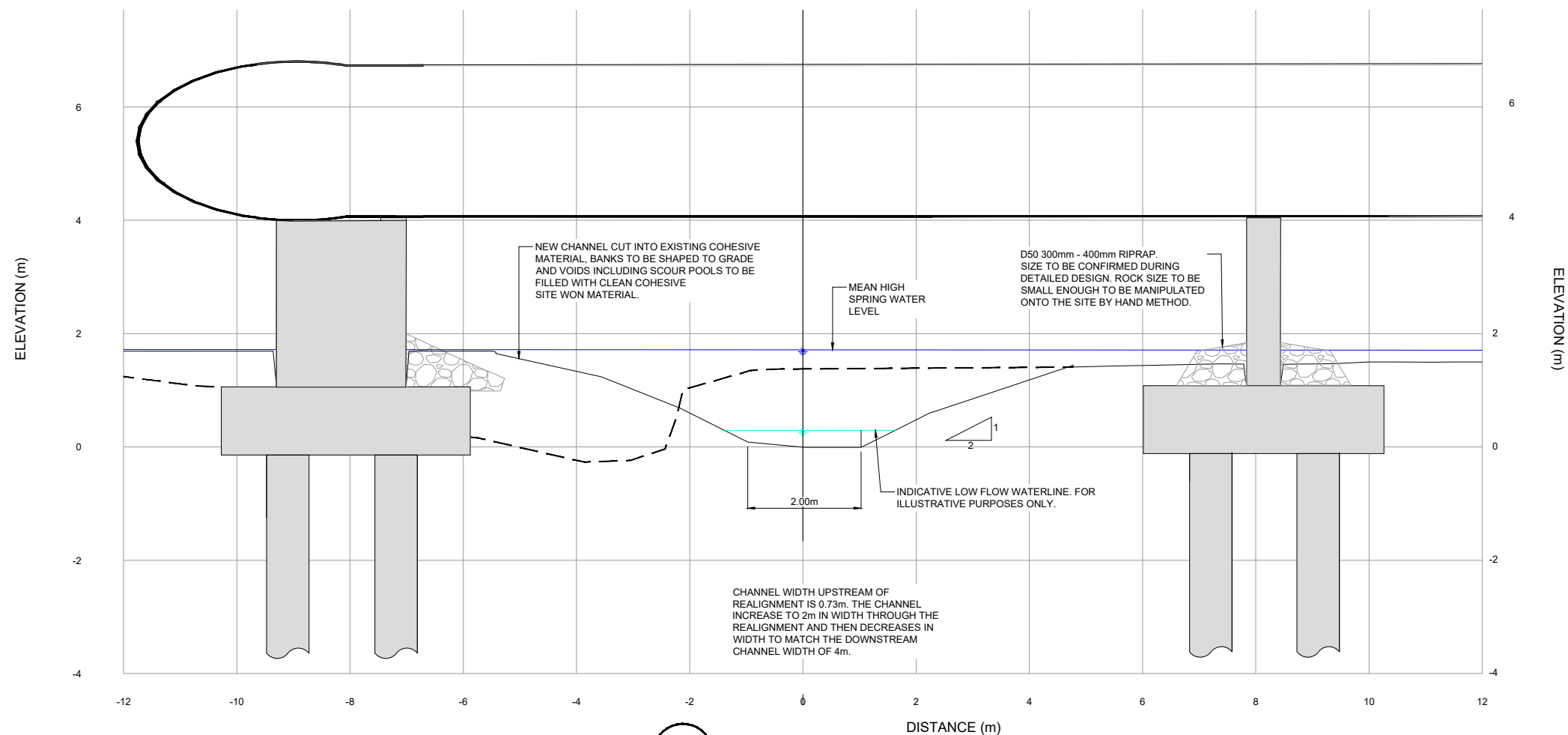
www.tonkintaylor.co.nz

1	FOR RESOURCE CONSENT	ALPO	ANST	25.10.2024	DESIGNED	KASC	SEP.24	DRAWING STATUS
					DRAWN	ALPO	SEP.24	RESOURCE CONSENT
					DESIGN CHECKED	ANST	25.10.24	PROJECT PHASE
					DRAWING CHECKED	TCOS	25.10.24	
					NOT FOR CONSTRUCTION			
REV	DESCRIPTION	CAD	CHK	DATE	APPROVED	DATE		

CLIENT	HEALTHY WATERS
PROJECT	HARANIA BLUE GREEN NETWORKS STAGE 2
TITLE	TENNESSEE STREAM WORKS CROSS SECTIONS - SHEET 2
SCALE (A1)	1:200
DWG No.	1017033.2002-3031
REV	1

————— DESIGN SURFACE
 - - - - - EXISTING GROUND
 ————— MEAN HIGH WATER SPRING LEVEL

1. ALL STREAM WORKS ARE INDICATIVE AND WILL BE CONSTRUCTED TO SPECIFIC SITE CIRCUMSTANCES INCLUDING CONSIDERATION FOR EXISTING BED MATERIALS, EXISTING VEGETATION, AND BANK STABILITY.



1	FOR RESOURCE CONSENT	ALPO	ANST	25.10.2024	DESIGNED KASC SEP.24			DRAWING STATUS RESOURCE CONSENT PROJECT PHASE	CLIENT HEALTHY WATERS		
					DRAWN ALPO SEP.24				PROJECT HARANIA BLUE GREEN NETWORKS STAGE 2		
					DESIGN CHECKED ANST 25.10.24				TITLE TENNESSEE STREAM WORKS		
					DRAWING CHECKED TCOS 25.10.24				DETAILS		
					NOT FOR CONSTRUCTION			THIS DRAWING IS NOT TO BE USED FOR CONSTRUCTION PURPOSES UNLESS SIGNED AS APPROVED			
REV	DESCRIPTION	CAD	CHK	DATE	APPROVED		DATE		SCALE (A1) 1:50		
									DWG No. 1017033.2002-3050		
									REV 1		