



**14 June
2023**



Community Newsletter

Muriwai Beach cyclone recovery

Property categorisation engagement process

You may have [read the OurAuckland story](#) that Auckland Council is beginning engagement this week with the owners of residential properties affected by this year's extreme weather events and those considered most at risk of further weather events.

The initial tranche of letters will contact around 700 residential property owners across the region this week to explain that their property may fall into the Government's high risk property category and that a detailed risk assessment is needed.

However, as mentioned in [last week's Muriwai Newsletter](#) because the work by GHD is still underway in our west coast communities, we will not be able to confirm which category specific properties fall into until this is completed (for Muriwai this will be approximately the end of August, see [Muriwai Newsletter 27 April](#) for more information).

We are working with GHD to identify properties that can be easily categorised more quickly.

[Last week's newsletter](#) included a story with more information about this, including the difference between rapid build assessment categories and the government's risk categories.

Reminder: Outer cordon lifting on Friday

As emailed on Monday 12 June, the outer cordon on the corner of Waitea Road and Oaia Road will open from **6am Friday 16 June**, allowing Aucklanders to visit Muriwai's valued public spaces and local businesses.

All other cordons will remain in place and security will be present at these cordons. Vehicle beach access via Coast Road will also remain **closed/locked**. Access to the beach by pedestrians, surfers, kite surfers and horse riders will not be restricted, only vehicles.

AT have undertaken an assessment of Waitea Road and are comfortable that an increase in the volume of traffic will not compromise the road. However, as the roading authority they reserve the right to close the road if high levels of rainfall are recorded in the area to reassess it again to ensure safety.

Please note Waitea Road will be temporarily reduced to 30km/h and will be no stopping at key locations to reduce congestion. There will also be traffic management staff onsite to help with traffic flow.

Auckland Council / Tāmaki Makaurau Recovery Coordination Office will continue to employ a security firm for the remaining cordons, to patrol the reported areas to act as a deterrent, and report any breaches or security concerns to the police.

Auckland Council's Deputy Group Recovery Manager, Mace Ward adds, "We understand for some residents in Muriwai the decision to lift the outer cordon may cause distress. However, it is important to note that people have a legal right to move freely around New Zealand.

"The cordons were put in place using emergency powers under the Civil Defence Emergency Management Act 2002, and the cordons need to be reasonable and 'demonstrably justified' under the bill of rights, which is a very high bar.

"As safety and security issues are resolved and mitigations put in place, the decision to keep the outer cordon closed is no longer justifiable", he says.

If you would like to review the Muriwai staged transitional plan, which we worked with the community on, [you can download it online](#). You can also review the story on [OurAuckland](#).

Need support?

If you need mental health support, please visit the [Auckland Council website for a list of available services](#). Free local support is also provided via [Kindred Family Services](#).

NEMA's Cyclone Gabrielle welfare support grant for community organisations is now open

The National Emergency Management Agency's Cyclone Gabrielle Welfare Support Grant is now taking applications.

The grant is available to reimburse costs already incurred by marae, iwi, and recognised community organisations (including rural groups, Pacific organisations, and ethnic service providers) to care for people who were affected, displaced, or isolated during the state of national emergency.

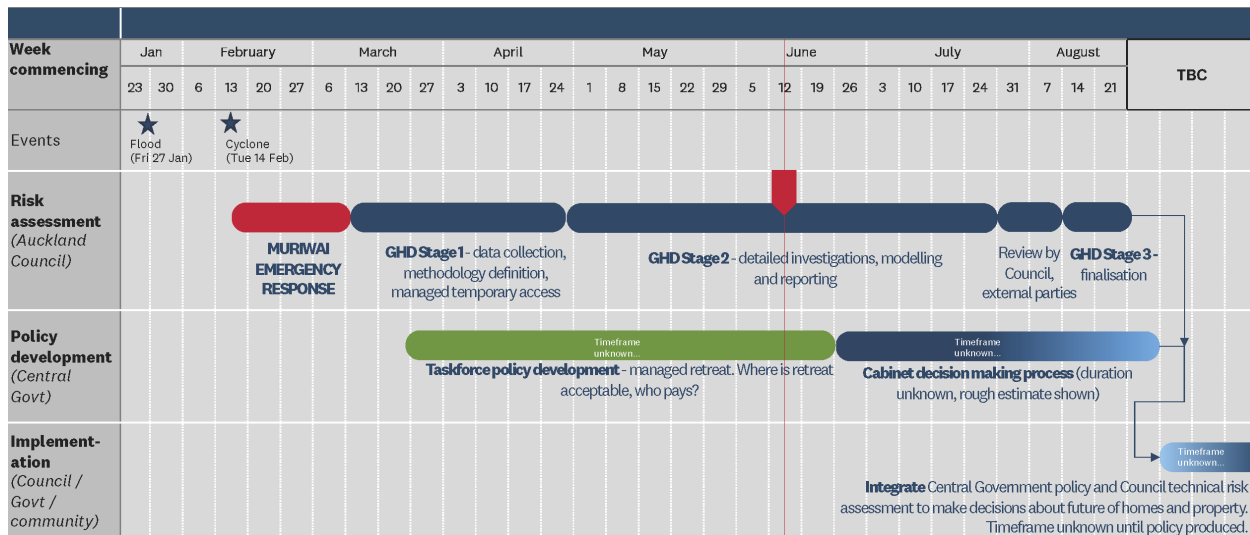
Applications are open until 30 June. Visit the [NEMA website for information on eligibility and the application form](#).

High-level plan (roadmap) for properties in the current exclusion zone

- Apply initial F-angle analysis of slip hazard to properties in the exclusion zone
Status: *complete*
- Perform geo-technical review of each property in the exclusion zones and identify any other risk factors
Status: *complete*
- Reassess placard status based on analysis of slip hazard and site observation
Status: *complete*
- Determine if the site is still considered dangerous
Status: *complete*
- Contact property owners (in the exclusion zone only) on updated placard status
Status: *complete*
- Apply updated placard status to building and update council records
Status: *complete*
- Communicate managed temporary access to affected property owners
Status: *complete*
- Communicate with individuals about their property placard status and assign a case manager to each property
Status: *complete. If you have not heard from us please email rbacomms@aucklandcouncil.govt.nz.*
- Review closure of Muriwai Regional Park and Muriwai cordons
Status: *complete – outer cordon at the corner of Waitea and Oaia roads will open to the public at 6am Friday 16 June. Please see above story.*
- Additional geotechnical investigation, analysis and modelling of the slopes at Muriwai (GHD Stage 2)
Status: *ongoing, for further information please refer to Ross's update in the [27 April Muriwai Newsletter](#) and [8 June Muriwai Newsletter](#).*

- Review status of remaining red-placarded homes
Status: *once additional geotechnical work to assess risk has been completed (unless new geotechnical information becomes available in the meantime). Please refer to Ross's update in the [27 April Muriwai Newsletter](#) and [8 June Muriwai Newsletter](#).*

Muriwai Geotech programme timeline:



Building assessments update

Updated placard status numbers in Muriwai as of Tuesday 13 June:

- Red 1 – 97
- Red 2 – 7
- Yellow 1 – 23
- Yellow 2 – 31
- White – 305

There are different reasons why these numbers may differ each week, including:

- If remedial action has been confirmed and approved by the council's compliance team, then the placard can be noted as closed and removed off the list.
- It is identified as a duplicate and removed.
- If was confirmed as one placard for a building with multiple postal addresses but sits in our system as one legal property.

Visit the [Auckland Council website](#) to learn more about what the placard colours mean.

Have we got your details?

If you've received this newsletter via email, then we're all good – we have your correct contact details.

If it has been passed on to you by someone else or you're reading it via a website or social media channel, you can [sign-up](#) to receive this newsletter directly to your inbox.

Previous newsletters

If you're new to the Muriwai Newsletter, please visit aucklandcouncil.govt.nz/muriwai-community-newsletters to read previous editions.



Need help?



Visit: aucklandcouncil.govt.nz/recovery-muriwai
Enquire: muriwai@aucklandcouncil.govt.nz



Write: Auckland Council, Private Bag 92300
Victoria Street West, Auckland 1142 | DX CX 10032

