



**3 May
2023**



Community Newsletter

Muriwai Beach cyclone recovery

Weather update

As we send this newsletter, MetService is advising of a wet and humid few days across Tāmaki Makaurau. While they're tracking another front heading our way on Thursday (4 May), forecasters say it should remain offshore, off Auckland's west coast.

So, while we're not expecting heavy downpours or intense thunderstorms, weather systems can change at short notice.

Please remain vigilant and if you see any land movement, please report this to Auckland Council by calling (09) 301 0101 or if it is an emergency call emergency services on 111.

If you are out and about on the roads, drive to the conditions.

Auckland Emergency Management recommends that people keep a close eye on the weather forecast and to be prepared if MetService issues any further watches or warnings. There are currently no weather watch or warnings in place for Auckland.

Preparing for bad weather

- Check your drains and gutters to ensure they aren't blocked. These can cause flooding issues during heavy rain.
- Secure outdoor furniture and items in your back yard.
- Keep an eye on the weather forecast.
- Take extreme care if you are driving in heavy rain, and delay trips if possible. Do not drive through floodwaters.
- If life or property is at risk, phone 111.

- Looking out for neighbours, friends and family will also be important, especially if you live, work or travel in an area that is prone to flooding, slips or power outages.
- Fallen trees, blocked drains or debris on public property can be reported to Auckland Council using our online [‘Report a Problem’](#) tool.
- If your property is damaged, take photographs for your insurer as early as possible.

Rubbish collection for flood-damaged household goods

If your property has been downgraded from a red placard and you now need to get damaged household goods removed, please call 09 301 0101 to arrange collection.

Reminder – rates relief for uninhabitable homes

Applications close **this Friday 5 May 2023** for rates relief grants for ratepayers with placarded properties that are uninhabitable and who need help paying their rates. As communicated last week, placarded customers were contacted via email (or via text where we don’t hold an email address) so if you have not heard from our grants team, we may not have your contact details. You can email the grants team (erfgrants@aucklandcouncil.govt.nz) for application details (noting that applications must be in by Friday 5 May 2023).

Wellbeing update – taking one day at a time

Going through a natural disaster can be stressful and scary, and right now you will be feeling a mixture of emotions. The government-supported website [All Sorts](#) provides further guidance on what you might be experiencing and how to access free support. You can read their [flyer on getting through a natural disaster](#), which is also available in [other languages](#).

Check-in with The Big Check-in

Tomorrow night, **Thursday 4 May (7-8.30pm)** you are welcome to join The Big Check-in, an online evening of support for rural people post-cyclone. The free nationwide 90-minute interactive online event is hosted by [Te Radar](#), with guests Steve Kearney (NZ Defence Force) and Dr Lucy Hone with some expert tools and tips for personal wellbeing and resilience, alongside community leaders Sandra Matthews (Tairāwhiti) and Michelle Ruddell (Tai Tokerau). To learn more and register for The Big Check-in visit: <https://bit.ly/TheBigCheck-in>.

Geotech update – video



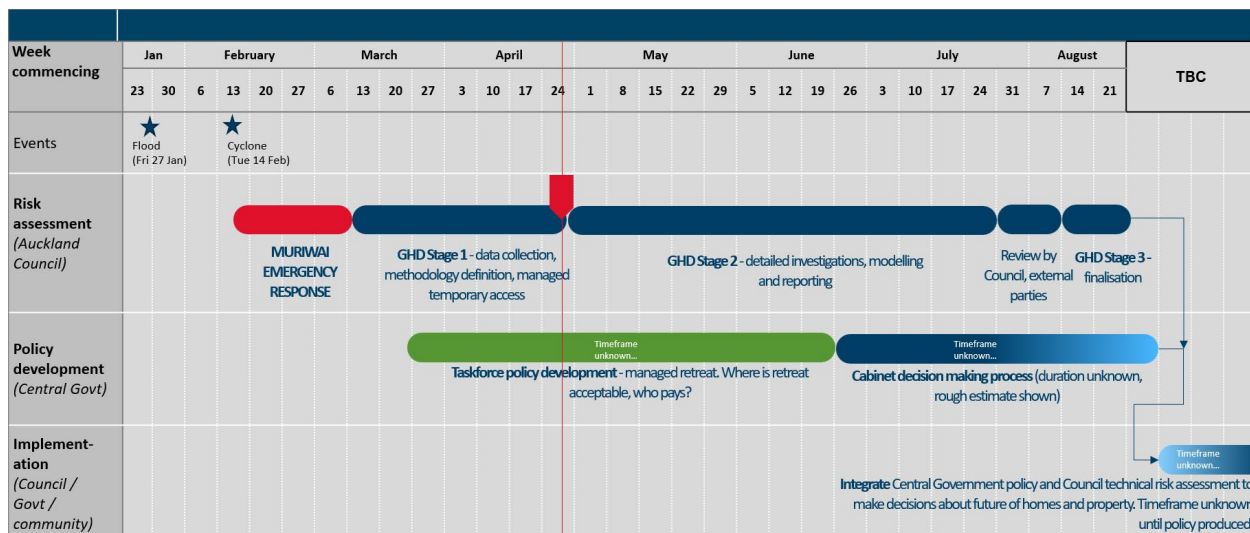
We hope [this video](#) and last week's geotechnical update in the [Muriwai Community Newsletter \(27 April\)](#) will have answered your questions about the geotechnical programme within the Muriwai exclusion zone. If not, please email us at geotech@aucklandcouncil.govt.nz with your questions and we will respond to them in next week's newsletter. The video also mentions the [government's announcement on Monday 1 May](#) around the three categorisations of property in areas affected by severe weather events earlier this year.

High-level plan (roadmap) for properties in the current exclusion zone

- Apply initial F-angle analysis of slip hazard to properties in the exclusion zone
Status: *complete*
- Perform geo-technical review of each property in the exclusion zones and identify any other risk factors
Status: *complete*
- Reassess placard status based on analysis of slip hazard and site observation
Status: *complete*
- Determine if the site is still considered dangerous
Status: *complete*

- Contact property owners (in the exclusion zone only) on updated placard status
Status: *complete*
- Apply updated placard status to building and update council records
Status: *complete*
- Communicate managed temporary access to affected property owners
Status: *complete*
- Communicate with individuals about their property placard status and assign a case manager to each property
Status: *in progress / ongoing*
- Review closure of Muriwai Regional Park and Muriwai cordons
Status: *review is underway and conditional on a security plan for red and yellow stickered properties, and ensuring a reliable water source for residents and the park.*
Additional geotechnical investigation, analysis and modelling of the slopes at Muriwai (GHD Stage 2)
Status: *ongoing, for further information please refer to Ross's update in the [27 April Muriwai Newsletter](#).*
- Review status of remaining red-placarded homes
Status: *once additional geotechnical work to assess risk has been completed (unless new geotechnical information becomes available in the meantime). Please refer to Ross's update in the [27 April Muriwai Newsletter](#).*

Muriwai Geotech programme timeline:



Building assessments update

Updated placard status numbers in Muriwai as of Tuesday 2 May:

- Red 1 – 100
- Red 2 – 5
- Yellow 1 – 21
- Yellow 2 – 31
- White – 304

There are different reasons why these numbers may differ each week, including:

- If remedial action has been confirmed and approved by the council's compliance team, then the placard can be noted as closed and removed off the list.
- It is identified as a duplicate and removed.
- If was confirmed as one placard for a building with multiple postal addresses, but sits in our system as one legal property.

Visit the [Auckland Council website](#) to learn more about what the placard colours mean.

Auckland Transport update

Works are progressing well to make Motutara Road safe for the community. Tree debris has been cleared from the slip on Motutara Road and work is underway to remove the remaining debris. Once the road is cleared, shipping containers will be placed between the houses that were damaged by the slip and the road. This aims to deter spectators and act as a barrier in case further material falls due to ground movement.

The works should be completed within the next two to four weeks.

Auckland Transport is also clearing the boat ramp with work due to finish by 12 May (weather dependent).

Domain Crescent has now been reopened and minor drainage works will be carried out this month.

Watercare update

Watercare sent an email to residents on 24 April 2023. They are working on a number of improvements that will minimise the current disruption to Muriwai residents:

- Watercare is working with Vector to arrange a direct power connection that will allow them to remove the generator and reduce the noise for neighbours. There is no date for this installation, but it is a top priority and they will be in touch when they have more news.
- The water treatment plant remains red stickered. Trees and other material are being removed from the site. Watercare will soon be conducting geotechnical investigations and structural assessments. They hope to be able to use the plant's water storage reservoir

instead of the mobile tanks that they've been topping up by tanker, but unfortunately due to the amount of work involved, this may take a few months.

The Muriwai community remains a top priority for Watercare and they are working hard to restore a permanent water supply. If you have any queries, please contact their dedicated team at floodrecovery@water.co.nz.

In the meantime, please remember:

- Don't water your garden
- Keep showers to four minutes
- Only use your washing machines and dishwashers when they're full
- Turn the tap off when you're brushing your teeth or soaping your hands.

Have we got your details?

If you've received this newsletter via email, then we're all good – we have your correct contact details.

If it has been passed on to you by someone else or you're reading it via a website or social media channel, we'd like you to share your contact details with us. Please email us at muriwai@aucklandcouncil.govt.nz.

There are lots of reasons we might not have your details – you might be a tenant (and we've been dealing directly with the property owner); you might not have provided an email address (just a phone number) to our inspections team; or sometimes, despite our best efforts, handwritten forms lead to mistakes.

Previous newsletters

If you're new to the Muriwai Newsletter, please visit the [Auckland Emergency Management website](#) to read previous editions.



Need help?



Visit: aucklandemergencymanagement.org.nz/muriwai
Enquire: muriwai@aucklandcouncil.govt.nz or rbacomms@aucklandcouncil.govt.nz



Write: Auckland Council, Private Bag 92300
Victoria Street West, Auckland 1142 | DX CX 10032

