



**22 June
2023**



Community update

Piha cyclone recovery

We will be sending out this update regularly when new information related to Piha's recovery is available.

In this issue:

- Property categorisation process – what you need to know
- Placarding review advice updated – field mapping completed last week; a refined approach to reassessment of RBA placards.
- Auckland Transport update
- NEMA's Cyclone Gabrielle welfare support grant for community organisations now open
- Piha drop-in clinics
- Mental health support available
- Building assessments update
- Waitākere Ranges Regional Park - Mercer Bay Loop has reopened

Have we got your details?

If you've received this newsletter via email, then we're all good – we have your correct contact details.

If it has been passed on to you by someone else or you're reading it via a website or social media channel, **please [sign up via this online form](#)**. (Privacy and spam regulations don't allow us to use our contact details from existing council information for general communications, so if you would like to receive updates, we need you to [sign up via this online form](#).)

We hope that the information in the updates will be relevant for most community members, so please also help us spread the word on this update to your neighbours and friends in Piha.

Property categorisation process – what you need to know

From last week, we began contacting property owners that were impacted by the extreme weather events or are in an area that may be at risk in the future.

No decisions on individual [property categorisations](#) have been made at this stage. To help understand the risk profile for these properties, we need more information, which can be submitted through an [online form](#).

The findings of the GHD geotechnical programme due to be completed in late September will feed into categorisation decisions for Piha properties alongside the information you supply using the online form.

Letters and emails are being sent out in batches, and not every impacted property will receive a letter – for example in cases where damage was not reported to council. If you think your property is high risk and you don't receive a letter, please [fill out the form anyway](#).

We are still working with the Government on what a buyout programme for confirmed Category 3 properties will look like. For updates on this as they come, and more information on the process, see the dedicated [recovery section on our website](#).

Placarding review advice updated

Field mapping was completed last week in Piha and Karekare by our geotechnical supplier GHD.

Findings from the field mapping and the review of the anecdotal evidence recently collected from the community has given GHD valuable information regarding the stability of the slopes.

This has also allowed us to refine our approach to reassessment of RBA placards and give more clarity to homeowners.

We have categorised properties in Piha and Karekare into three groups. These are represented by colours brown, purple and no colour. Each colour has a different approach to reassessment of the RBA placard based on the outcome of the field mapping. **These colours do not relate to the Government property categorisations or placarding, they are just colours on the map to help show the different areas.**

The addresses within the brown and purple categories are shown on the maps below. If your property is not indicated on these maps, it is considered as 'no colour'. The reassessment approaches to RBA placards for the different colours are presented below:

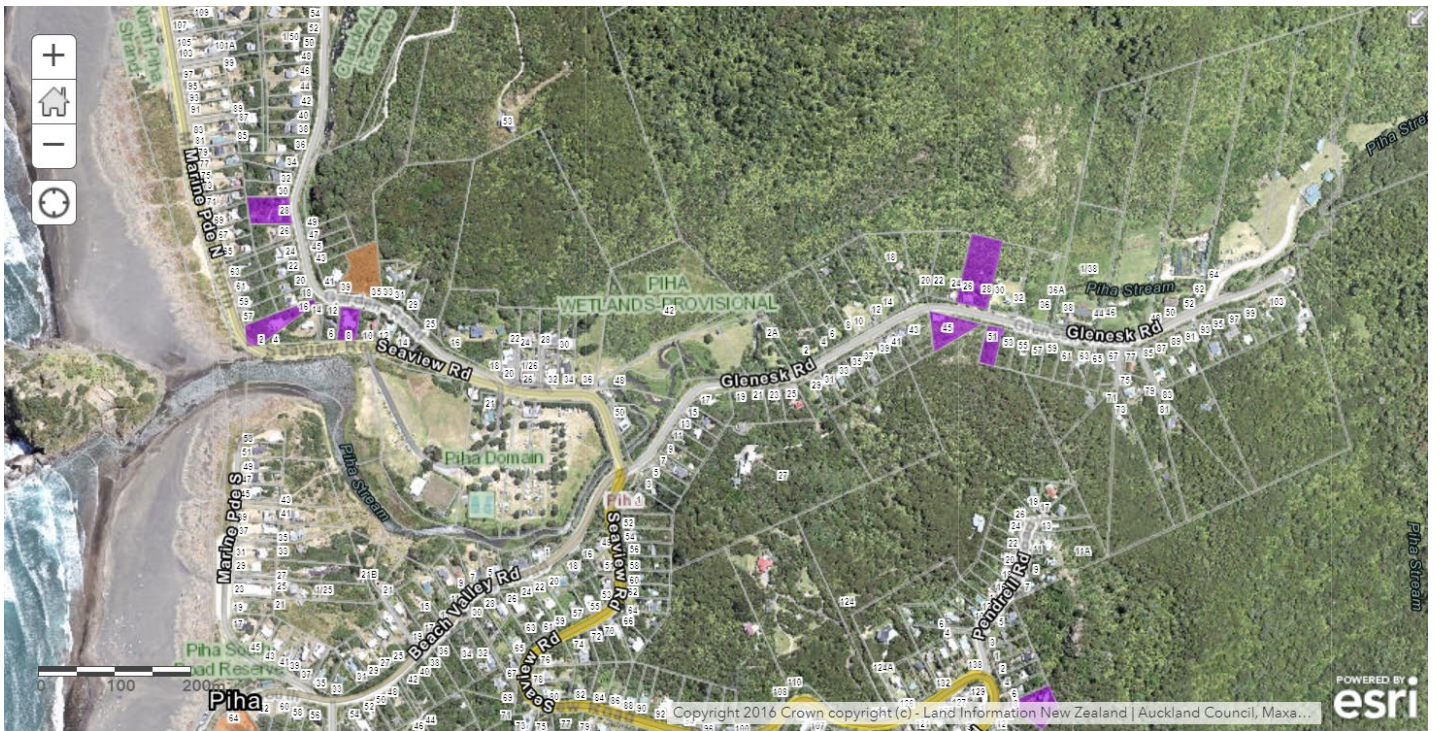
Brown - These properties are likely to be within the influence zone of the main large-scale slope instability in Piha and Karekare. The results of the GHD work are needed to reliably assess the risk to loss of life. The RBA placards for these properties will be reassessed following completion of the area-wide assessment undertaken by GHD. Once GHD's work is completed in September, each of these RBA placards will be reassessed. Owners of these properties do not need to do anything for this to happen.

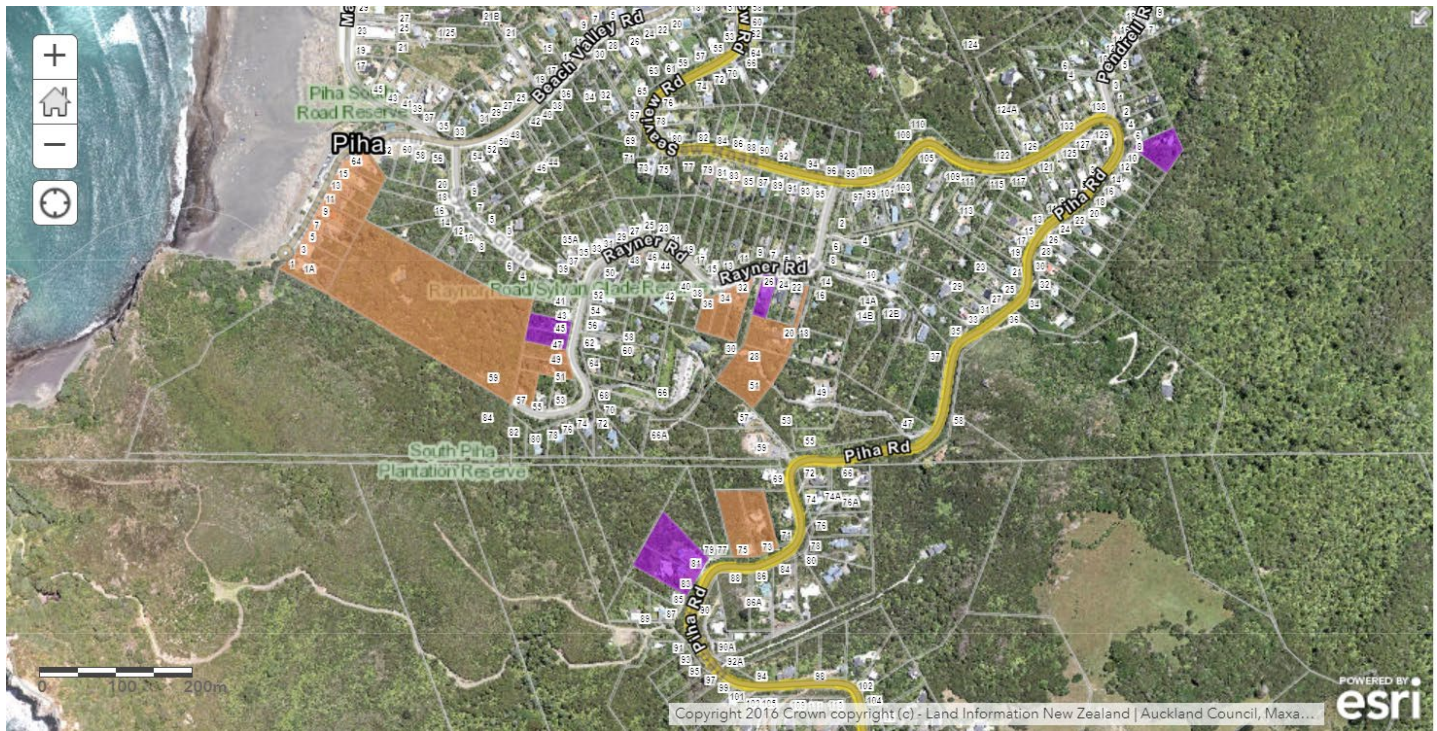
Purple - These properties are likely to be outside the influence zone of the main large-scale slope instability in Piha and Karekare, and imminent loss of life is not apparent. The houses within these properties show little to no apparent damage. However, debris flows and smaller-scale instability

may have affected the land of these properties, and site-specific remediation may not be sufficient. GHD is working on reassessing the placards of these properties more quickly. Owners of these properties do not need to do anything for this to happen.

No colour – Those properties which are not shown on the attachment are likely to be outside the main large-scale slope instability in Piha and Karekare. Some of these properties have been affected by smaller-scale local landslides, resulting in RBA placards. Because these small landslides require site-specific assessment, they should be repaired through individual remediation works. We recommend the owners of yellow- or red-placarded properties in this category contact their insurers and engage a professional chartered geotechnical engineer or chartered engineering geologist to inform them about the next appropriate steps.







Auckland Transport (AT) update

Elevation slip

Technical investigation continues, including geotechnical assessment and analysis of bore hole data. This technical information is being used to help inform design solutions, which are now being worked on.

73 Piha Rd - Delay to works: slip repair and retaining wall construction

Recently residents were advised that contractors would soon be starting works, stabilising the slip, and building a retaining wall above 73 Piha Road.

The final review of the plans highlighted an issue in the design. Fortunately, this issue has been discovered before works have commenced; however this means works are delayed. We will advise a new start date when the issue is resolved.

58 Piha Rd – temporary waterfall

AT have also noted the temporary waterfall above 58 Piha Road that occurs after heavy rain. This is a natural overland flow path for the surface runoff from the hillside above the road.

While it may look considerable, AT have ensured this surface water is collected by the existing road drainage system and conveyed further down the road as it would normally.

Please be assured, our maintenance teams have been carrying out regular inspections of Piha Rd, particularly during periods of heavy rainfall, to ensure that the road is not affected and remains safe for all users.

Other roading repair sites around Piha are also in the design phase. You can find up-to-date information on AT's [Piha page](#) – scroll down to find a list of roads.

NEMA's Cyclone Gabrielle welfare support grant for community organisations is now open

The National Emergency Management Agency's (NEMA) Cyclone Gabrielle Welfare Support Grant is now taking applications.

The grant is available to reimburse costs already incurred by marae, iwi, and recognised community organisations (including rural groups, Pacific organisations, and ethnic service providers) to care for people who were affected, displaced, or isolated during the state of national emergency.

Applications are open until Friday 30 June.

Visit the [NEMA website for information on eligibility and the application form](#).

Tāmaki Makaurau Recovery Office – Piha drop-in clinics

Simon Fraser, Community Liaison Lead for Piha and Karekare, will be available to discuss any recovery-related issues from Cyclone Gabrielle and Auckland Anniversary weekend floods at the Piha Community Library, 10am to 12noon, Monday 26 June and Monday 3 July.

Can't make these times? Feel free to email Simon at piha@aucklandcouncil.govt.nz.

Need mental health support?

We understand the ongoing distress across our communities impacted by the extreme weather events this year. The Recovery Office is currently organising community mental health workshops in conjunction with the Red Cross. Details of these will be announced in the next community update.

If you need mental health support, such as help with anxiety, financial help, support for young people, or you'd like to know how you can help others, please visit the [Auckland Council website for a list of available services](#).

Building assessments update

Updated placard status numbers in Piha as of Tuesday 20 June:

- Red 1 – 10
- Red 2 – 9
- Yellow 1 – 15
- Yellow 2 – 9
- White – 155

There are different reasons why these numbers may differ each week, including:

- If remedial action has been confirmed and approved by the council’s compliance team, then the placard can be noted as closed and removed off the list.
- It is identified as a duplicate and removed.
- It was confirmed as one placard for a building with multiple postal addresses but sits in our system as one legal property.

Visit the [Auckland Council website](#) to learn more about what the placard colours mean.

Waitākere Ranges Regional Park

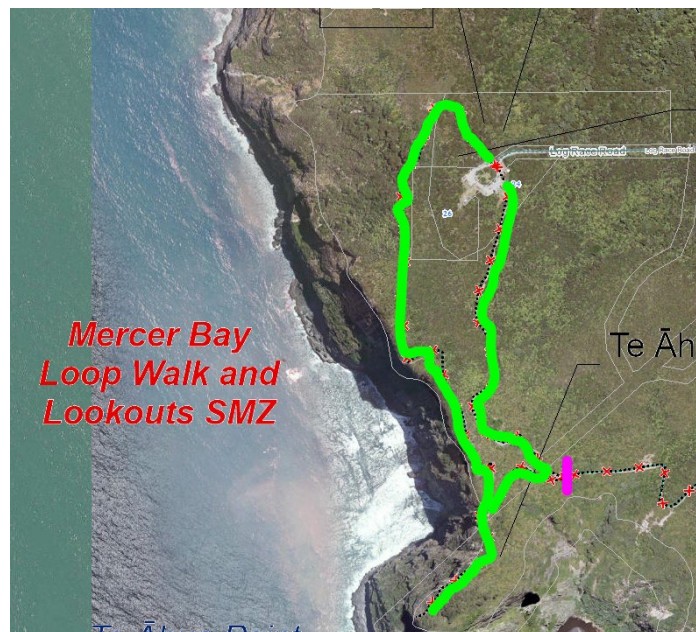
Our staff are continuing to assess damage and accessibility, with a view to opening more areas as soon as possible while considering the impact on the community. This includes geotechnical assessment on some tracks.

We ask the public to respect all closures and not remove any barriers or signage currently in place. This is for people’s own safety, and to not add to environmental damage in the area, including the threat of spreading kauri dieback disease.

We continue to encourage visitors to check our [map of open and closed tracks](#) on the Auckland Council website before heading out.

Tracks that have recently reopened:

- Byers Loop (2 June)
- Mercer Bay Loop (17 June) – please note that Comans Track has a barrier in place (pink line in image below), as it still needs repairs.



Damaged tracks are likely to reopen in the short to medium term:

- Comans Track
- Ahu Ahu Track
- Gibbons Track
- Muir Track

- Slip Track
- Caves Track (Whatipu)

Damaged tracks that will not be open for some time:

- Laird Thomson Track
- Tasman Lookout Track
- Marawhara Track
- White Track
- Lion Rock Track
- Lake Wainamu Track (full loop)

Damaged tracks awaiting geotechnical reports:

- Gannet Track / Takapu Refuge
- Quarry Track
- Lookout Track
- Edwin Mitchelson Track
- Auckland City Walk
- Knutzen and Kitekite tracks (including access to Kitekite Falls)
- Zig Zag track



Need help?



Visit: <http://www.aucklandcouncil.govt.nz/piha-community-newsletters>
Enquire: piha@aucklandcouncil.govt.nz or rbacomms@aucklandcouncil.govt.nz



Write: Auckland Council, Private Bag 92300
Victoria Street West, Auckland 1142 | DX CX 10032

