

# Recycle Right

- You can recycle plastic, glass, metal and cardboard packaging containers from the kitchen, bathroom and laundry, as well as paper from home.
- Please don't put plastic bags in your Auckland Council recycling bin – they get caught in the sorting machines. You can drop these to collection points at local participating retailers.
- Wondering what items can go in the recycling bin?

## Just ask Binny!

Your recycling buddy.

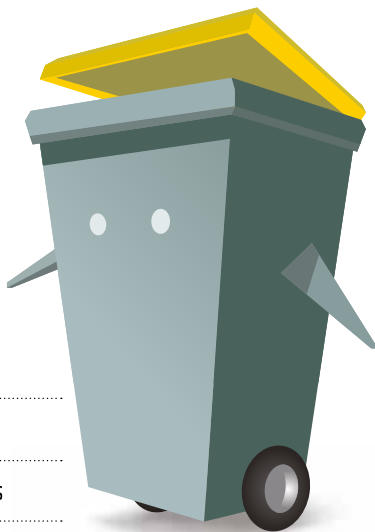


Connect with Binny now



### Please note:

- Rinse all containers
- Leave the lids on all bottles and containers
- Containers should be no larger than 4 litres
- Include paper, cardboard, milk and juice cartons e.g. Tetra Pak cartons in your recycling bin.



For a full list of what can and can't go in your recycling bin, simply visit [makethemostofwaste.co.nz](http://makethemostofwaste.co.nz)

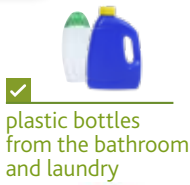


## Yes please

### These items go into recycling



✓ plastic bottles



✓ plastic bottles from the bathroom and laundry



✓ plastic containers



✓ clear plastic food containers



✓ glass bottles and jars



✓ aluminium cans and empty aerosols



✓ milk and juice cartons e.g Tetra Pak® cartons



✓ steel and tin cans



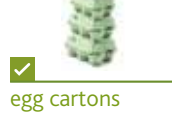
✓ advertising mail and envelopes



✓ newspapers and magazines



✓ paper and cardboard packaging

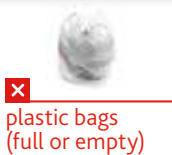


✓ egg cartons



## No thanks

### These items don't go into recycling



✗ plastic bags (full or empty)



✗ food and garden waste



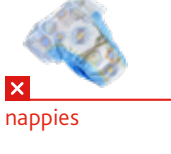
✗ hazardous waste and chemicals



✗ polystyrene meat trays and packaging



✗ all types of batteries



✗ nappies



✗ clothing, shoes and textiles



✗ window glass, mirror glass and lightbulbs



✗ cookware, Pyrex and drinking glasses



✗ electronic and electrical items



✗ building waste



✗ medical waste