



Eastern Busway Alliance



Appendix 3: Reeves Road Flyover – 2018 Specimen Design

C:\Users\andrew.poulgrain\Documents\AMETI_FINAL_DRAFT_SD\PW_EP\PORT\400_STR_BECO\AMETI_SD_DRG-EB2-410-1501.dwg

ORIGINAL SIZE A1

DRAWING NUMBER	TITLE	
AMETI-SD-DRG-EB2-410-1501	DRAWING INDEX	EB2 STRUCTURES - BRIDGES
EB2 STRUCTURES - BRIDGES		
AMETI-SD-DRG-EB2-410-1511	EB2 REEVES ROAD FLYOVER	PLAN AND LONG SECTION
AMETI-SD-DRG-EB2-410-1512	EB2 REEVES ROAD FLYOVER	PIER SETOUT
AMETI-SD-DRG-EB2-410-1521	EB2 REEVES ROAD FLYOVER	TYPICAL PIER PLAN AND SECTION
AMETI-SD-DRG-EB2-410-1522	EB2 REEVES ROAD FLYOVER	TYPICAL ABUTMENT PLAN AND SECTION
AMETI-SD-DRG-EB2-410-1523	EB2 REEVES ROAD FLYOVER	3D VIEW
AMETI-SD-DRG-EB2-410-1531	EB2 REEVES ROAD FLYOVER	CONSTRUCTION STAGING

REV	REVISIONS	DATE	BY	CHKD
B	FINAL DRAFT SPECIMEN DESIGN	04.09.19	AP	
A	DRAFT SPECIMEN DESIGN	14.12.18	LN	

STATUS	DATE	BY
SURVEYED	N/A	
DRAWN	14.12.18	L. NARAYAN
DRAWING CHECK	30.08.19	A. POULGRAIN
DESIGN	14.12.18	K. RAMASWAMY
DESIGN CHECK	04.09.19	I. FLETT
APPROVED	04.09.19	A. LEES



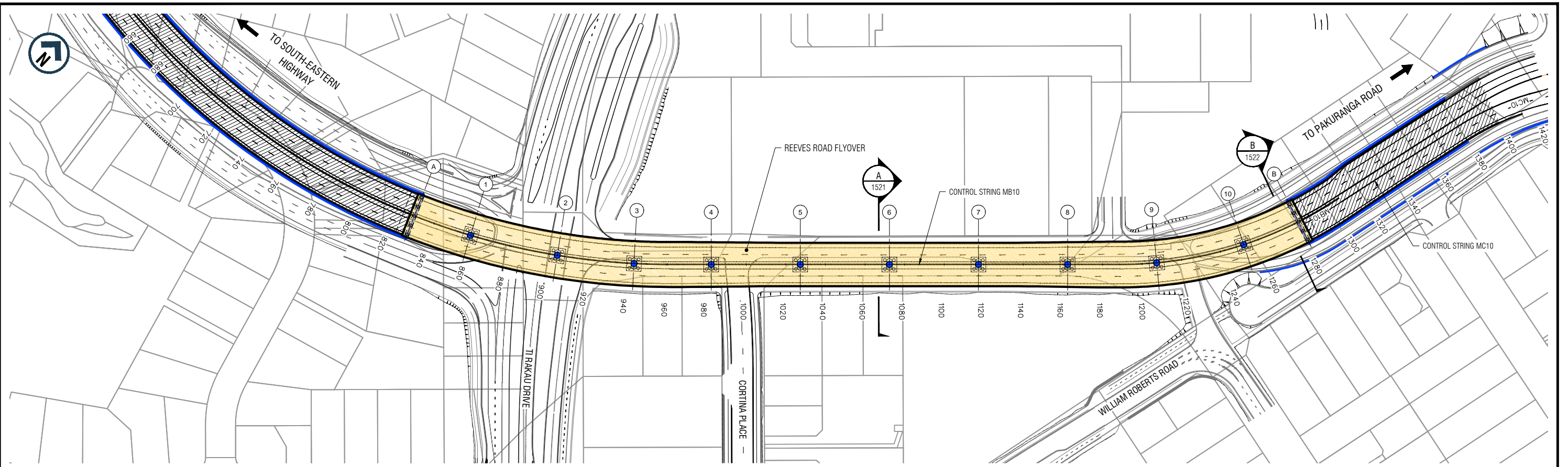
Project: AUCKLAND TRANSPORT
AMETI EASTERN BUSWAY 2 AND 3

Drawing Title: DRAWING INDEX
EB2 STRUCTURES - BRIDGES

Drawing Status: DRAFT			
Drawing Date: 04.09.19			
A1 Scale	NTS	A3 Scale	NTS
Drawing No: AMETI-SD-DRG-EB2-410-1501			Revision: B

NOT FOR CONSTRUCTION

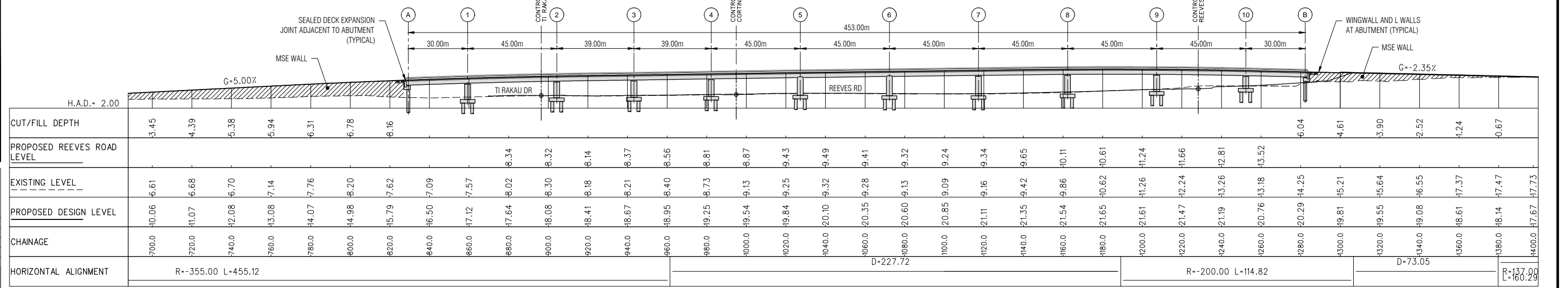
C:\Users\andrew.poulgrain\Documents\AMETI_FINAL_DRAFT_SDP\W_EXPORT\A03_STR_GEO\METI_SD_DRG_EB2-410-1511.dwg



PLAN
Scale 1:1000 (A1) 1:2000 (A3)

- NOTES:**
- SERVICES NOT INDICATED FOR CLARITY. REFER TO DRAWING AMETI-SD-DRG-EB2-410-1512.
 - DIMENSIONAL INFORMATION IS TO BE CONFIRMED DURING DETAILED DESIGN PHASE.
 - SURVEY DATUM: NZ GEODETIC DATUM (MT EDEN CIRCUIT 2000)
NEW ZEALAND VERTICAL DATUM 2016.
 - REFER TO GETOTECH DRAWING AMETI-SD-DRG-EB2-240-1741 FOR DETAILS OF MSE WALL.
 - ARTICULATION TO BE CONFIRMED DURING DETAILED DESIGN. SPECIMEN DESIGN ASSUMES FOLLOWING:
 - SUPERSTRUCTURE INTEGRAL AT PIERS 5 AND 6
 - LONGITUDINAL FIXITY AND SHEAR KEYS AT PIERS 3, 4, 7 AND 8 (LONGITUDINAL AND TRANSVERSE RESTRAINT)
 - SUPERSTRUCTURE RELEASED PIERS 1, 2, 9, 10 AND AT ABUTMENTS (TRANSVERSE RESTRAINTS ONLY).

LONG SECTION LEGEND
 ——— DESIGN SURFACE
 - - - - - EXISTING SURFACE



LONGITUDINAL SECTION - CONTROL LINE MB10
 SCALES: 1:1000 Horiz. 1:1000 Vert.

CONTROL LINE MC10



ORIGINAL SIZE
A1

REV	DESCRIPTION	DATE	DRAWN	DATE
C	FINAL DRAFT SPECIMEN DESIGN	04.09.19	AP	04.09.19
B	DRAFT SPECIMEN DESIGN	14.12.18	LN	14.12.18
A	PRELIMINARY SPECIMEN DESIGN	31.08.18	LN	31.08.18

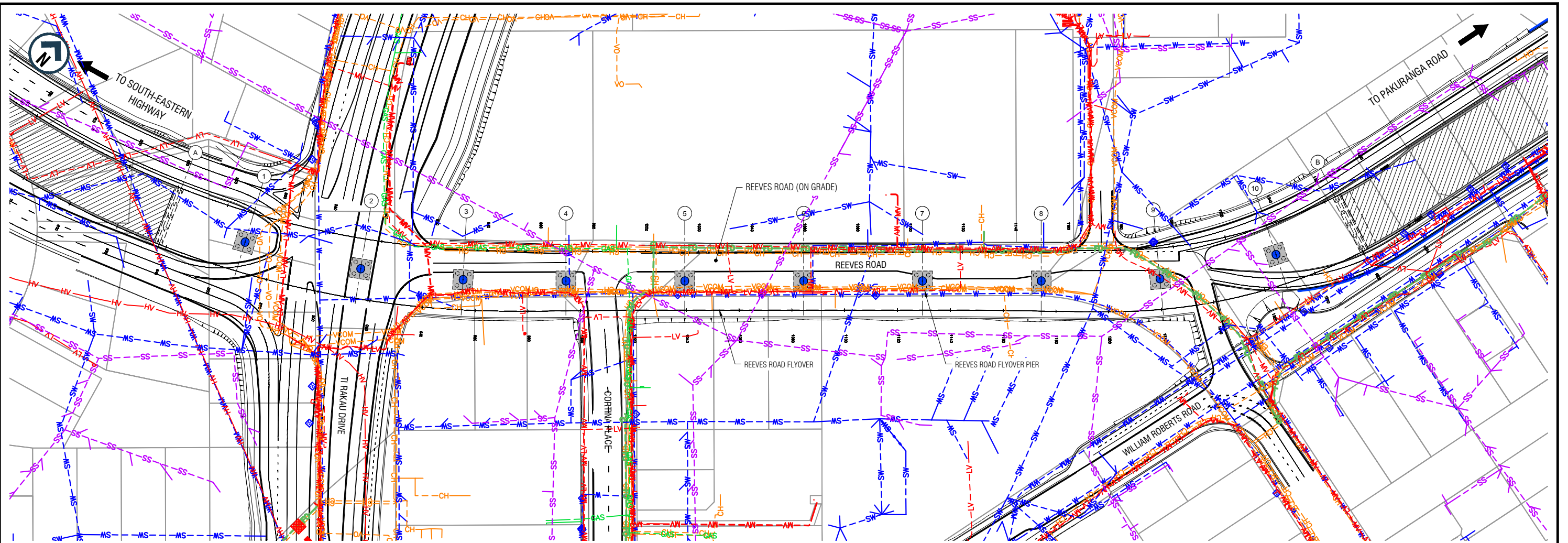
SURVEYED	N/A	
DRAWN	L. NARAYAN	14.12.18
DRAWING CHECK	A. POULGRAIN	30.08.19
DESIGN	K. RAMASWAMY	14.12.18
DESIGN CHECK	I. FLETT	04.09.19
APPROVED	A. LEES	04.09.19



Project: AUCKLAND TRANSPORT
 AMETI EASTERN BUSWAY 2 AND 3
 Drawing Title: EB2 REEVES ROAD FLYOVER
 PLAN AND LONG SECTION

NOT FOR CONSTRUCTION			
DRAFT			
Drawing Date: 04.09.19			
A1	1:1000	A3	1:2000
Drawing No: AMETI-SD-DRG-EB2-410-1511			
			C

C:\Users\andrew.poulgrain\Documents\AMETI_FINAL_DRAFT_SDP\W_EXPORT\A03_STR_GEO\AMETI_SD_DRG_EB2-410-1512.dwg

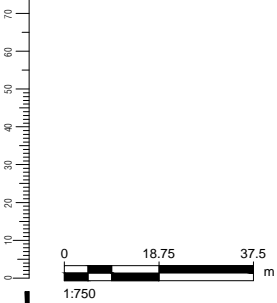


PLAN
Scale 1:1750 (A1) 1:1500 (A3)

EXISTING SERVICES CLASHING WITH REEVES ROAD FLYOVER
SUBSTRUCTURE SHALL BE RELOCATED (TBC)

NOTES:
1. UTILITIES SHOWN ARE APPROXIMATE EXISTING LOCATION.

LEGEND	
---SW---SW---	STORMWATER
---SS---SS---	WASTEWATER
---W---W---	WATER SUPPLY - LOCAL
---WM---WM---	WATER SUPPLY - MAIN
---HV---HV---	TRANSPOWER HV U/G
---HV---HV---	TRANSPOWER HV O/H
---FO---FO---	CHORUS - FIBRE OPTIC U/G
---CH---CH---	CHORUS U/G
---VO---VO---	VODAFONE - COMMS U/G
---GAS---GAS---	VECTOR - GAS U/G
---VCOM---VCOM---	VECTOR - COMMS U/G
---MV---MV---	VECTOR - MV U/G
---MV---MV---	VECTOR - MV O/H
---LV---LV---	VECTOR - LV U/G
---LV---LV---	VECTOR - LV O/H



REV	DESCRIPTION	DATE	BY	CHECKED	DATE
C	FINAL DRAFT SPECIMEN DESIGN	04.09.19	AP		
B	DRAFT SPECIMEN DESIGN	14.12.18	LN		
A	PRELIMINARY SPECIMEN DESIGN	31.08.18	LN		

REV	DESCRIPTION	DATE	BY	CHECKED	DATE
	SURVEYED	N/A			
	DRAWN	14.12.18	L. NARAYAN		
	DRAWING CHECK	30.08.19	A. POULGRAIN		
	DESIGN	14.12.18	K. RAMASWAMY		
	DESIGN CHECK	04.09.19	I. FLETT		
	APPROVED	04.09.19	A. LEES		

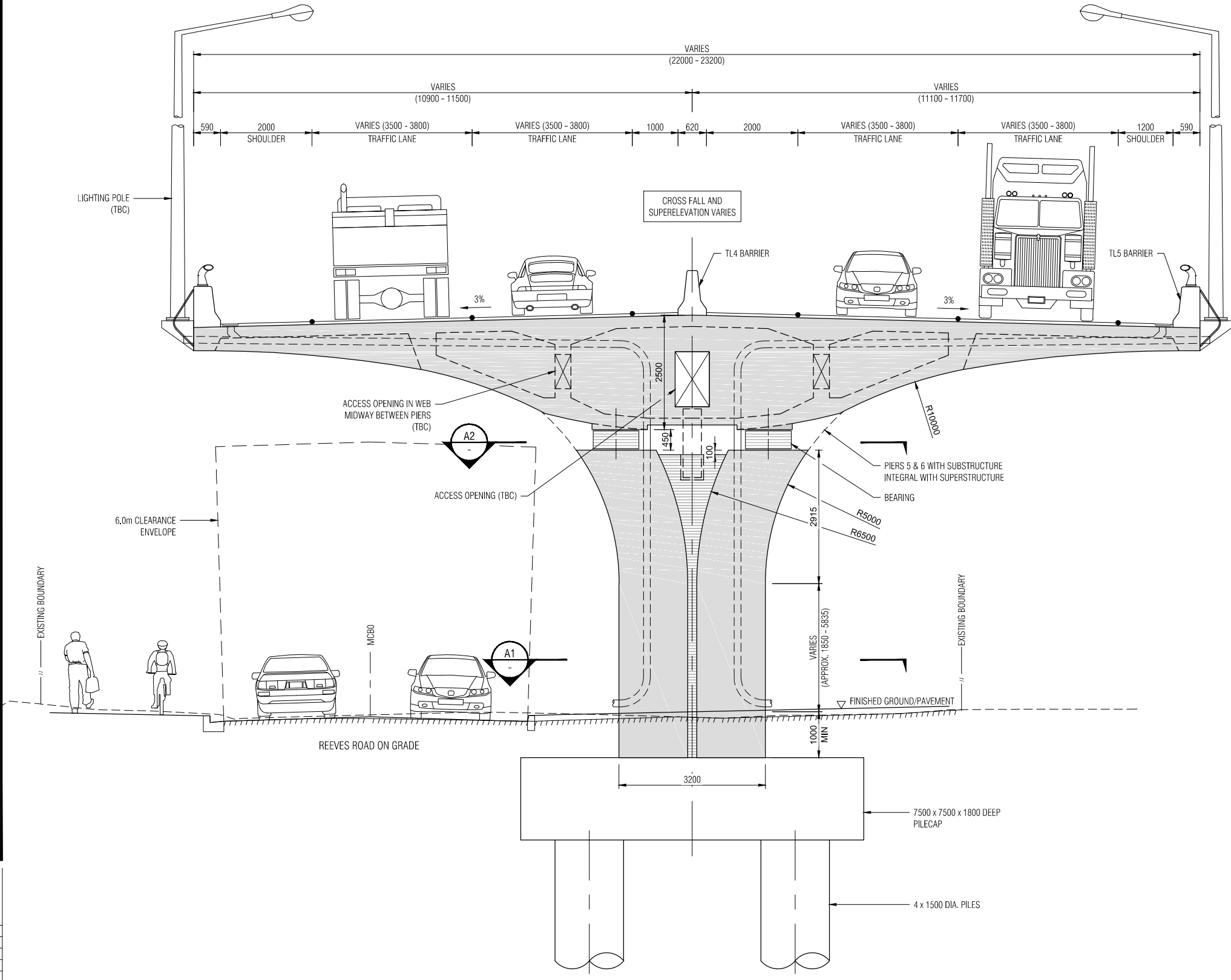


Project: AUCKLAND TRANSPORT
AMETI EASTERN BUSWAY 2 AND 3
Drawing Title: EB2 REEVES ROAD FLYOVER
UTILITIES AND PIER SETOUT PLAN

NOT FOR CONSTRUCTION			
Drawing Status:		DRAFT	
Drawing Date:		04.09.19	
A1 Scale:	1:750	A3 Scale:	1:1500
Drawing No. AMETI-SD-DRG-EB2-410-1512			
			C

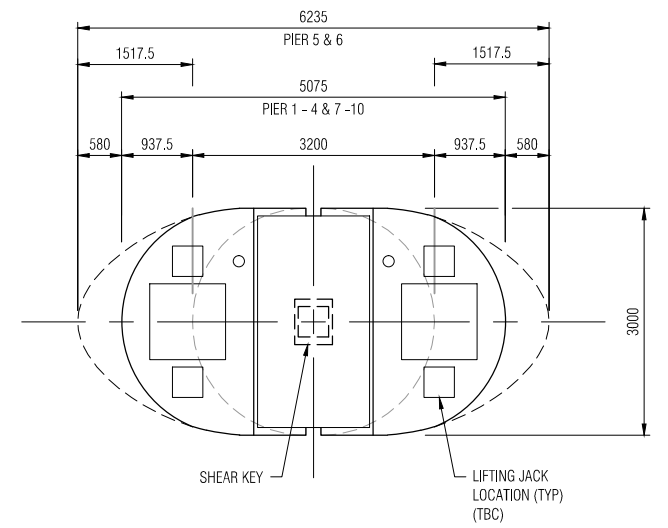
C:\Users\andrew.poulgrain\Documents\AMETI_FINAL_DRAFT_SDP\WIP_EXP\001_STR_BEC\AMETI_SD_DRG_EB2-410-1521.dwg

- NOTES:**
1. REFER TO CIVIL DRAWINGS FOR ROAD DESIGN LEVELS.
 2. REFER TO LIGHTING DRAWINGS FOR STREET LIGHTING DETAILS.
 3. REFER TO DRAWING AMETI-EB2-410-1511 FOR REMAINING NOTES.

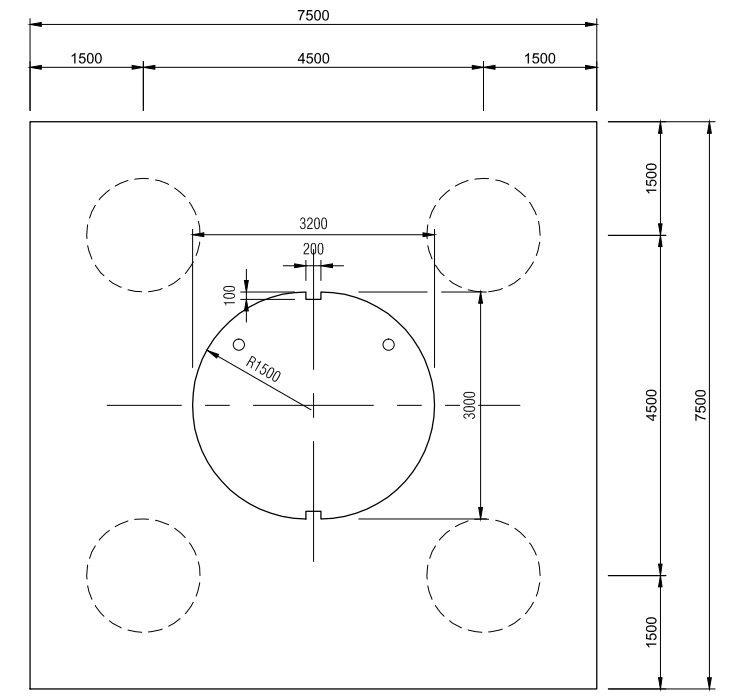


A | TYPICAL PIER SECTION
410-1511 | Scale 1:50 (A1), 1:100 (A3)

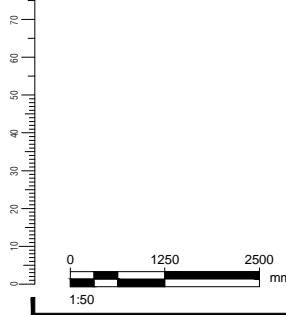
(DRAWN FOR PIER 1 - 4 & 7 - 10. PIERS 5 & 6 SIMILAR BUT SUBSTRUCTURE INTEGRAL WITH SUPERSTRUCTURE)



A2 | SECTION
Scale 1:50 (A1), 1:100 (A3)



A1 | SECTION
Scale 1:50 (A1), 1:100 (A3)



ORIGINAL SIZE
A1

REV	DESCRIPTION	DATE	BY	CHECKED
C	FINAL DRAFT SPECIMEN DESIGN	04.09.19	AP	
B	DRAFT SPECIMEN DESIGN	14.12.18	LN	
A	PRELIMINARY SPECIMEN DESIGN	31.08.18	LN	
	REVISIONS			

STATUS	NAME	DATE
SURVEYED	N/A	
DRAWN	L. NARAYAN	14.12.18
DRAWING CHECK	A. POULGRAIN	30.08.19
DESIGN	K. RAMASWAMY	14.12.18
DESIGN CHECK	I. FLETT	04.09.19
APPROVED	A. LEES	04.09.19

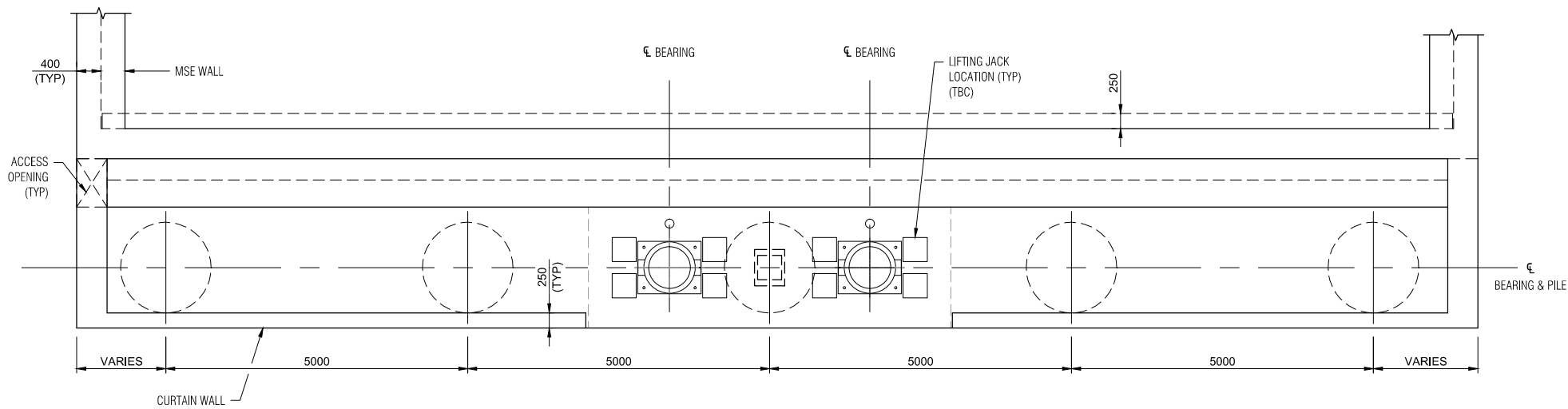


Project: AUCKLAND TRANSPORT
AMETI EASTERN BUSWAY 2 AND 3
Drawing Title: EB2 REEVES ROAD FLYOVER
TYPICAL PIER PLAN AND SECTION

Drawing Status: DRAFT			
Drawing Date: 04.09.19			
A1	1:50	A3	1:100
Drawing No. AMETI-SD-DRG-EB2-410-1521			
			Revision: C

NOT FOR CONSTRUCTION

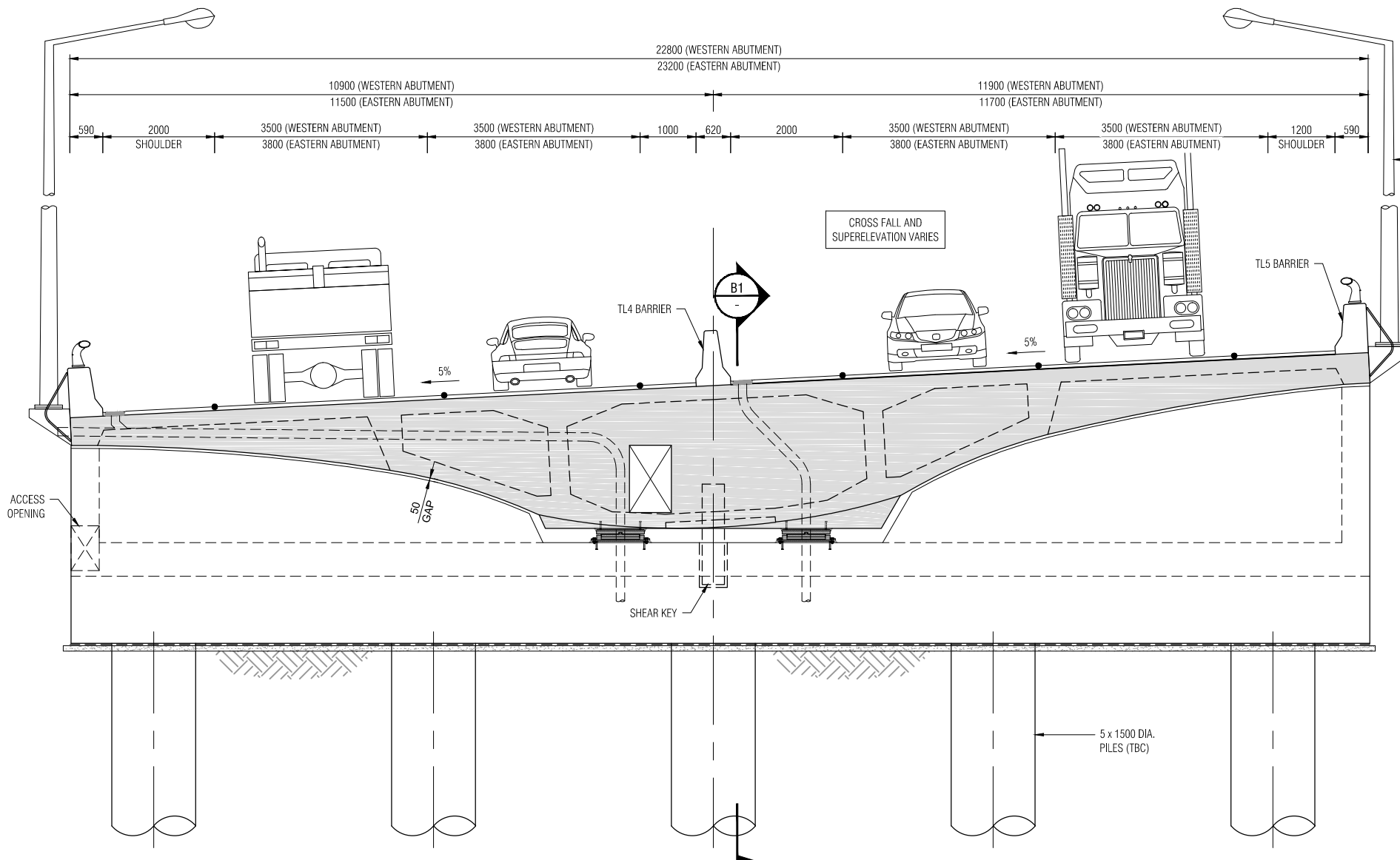
C:\Users\andrew.poulin\Documents\AMETI_FINAL_DRAFT_SD\PPW_EXP\001400_STR_BEC\AMETI_SD_DRG_EB2-410-1522.dwg



TYPICAL ABUTMENT PLAN

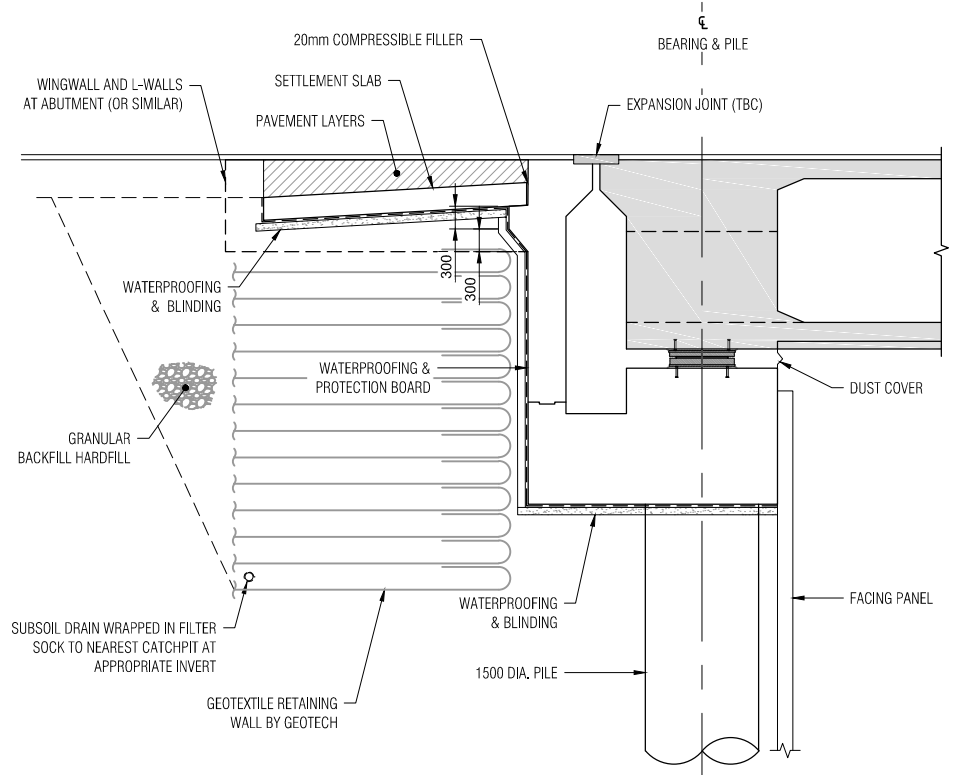
Scale 1:50 (A1), 1:100 (A3)
(SUPERSTRUCTURE NOT SHOWN FOR CLARITY)

- NOTES:**
1. REFER TO CIVIL DRAWINGS FOR ROAD DESIGN LEVELS.
 2. REFER TO LIGHTING DRAWINGS FOR STREET LIGHTING DETAILS.
 3. REFER TO DRAWING AMET1-EB2-410-1511 FOR REMAINING NOTES.



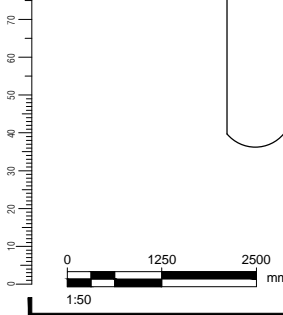
B | TYPICAL ABUTMENT SECTION

410-1511 | Scale 1:50 (A1), 1:100 (A3)



B1 | SECTION

Scale 1:50 (A1), 1:100 (A3)



REV	DESCRIPTION	DATE	BY	CHKD
C	FINAL DRAFT SPECIMEN DESIGN	04.09.19	AP	
B	DRAFT SPECIMEN DESIGN	14.12.18	LN	
A	PRELIMINARY SPECIMEN DESIGN	31.08.18	LN	

REVISIONS	DATE	BY	CHKD
SURVEYED	N/A		
DRAWN	14.12.18	L. NARAYAN	
DRAWING CHECK	30.08.19	A. POULGRAIN	
DESIGN	14.12.18	K. RAMASWAMY	
DESIGN CHECK	04.09.19	I. FLETT	
APPROVED	04.09.19	A. LEES	

Project: AUCKLAND TRANSPORT
AMETI EASTERN BUSWAY 2 AND 3

Drawing Title: EB2 REEVES ROAD FLYOVER
TYPICAL ABUTMENT PLAN AND SECTION

NOT FOR CONSTRUCTION			
DRAFT			
Drawing Date: 04.09.19			
A1	1:50	A3	1:100
Drawing No. AMETI-SD-DRG-EB2-410-1522			
			C



3D VIEW

0 10 20 30 40 50 60 70

ORIGINAL SIZE **A1**

REV	REVISIONS	DRAWN	DATE
C	FINAL DRAFT SPECIMEN DESIGN	AP	04.09.19
B	DRAFT SPECIMEN DESIGN	LN	14.12.18
A	PRELIMINARY SPECIMEN DESIGN	LN	31.08.18

SURVEYED	N/A	
DRAWN	L. NARAYAN	14.12.18
DRAWING CHECK	A. POULGRAIN	30.08.19
DESIGN	K. RAMASWAMY	14.12.18
DESIGN CHECK	I. FLETT	04.09.19
APPROVED	A. LEES	04.09.19

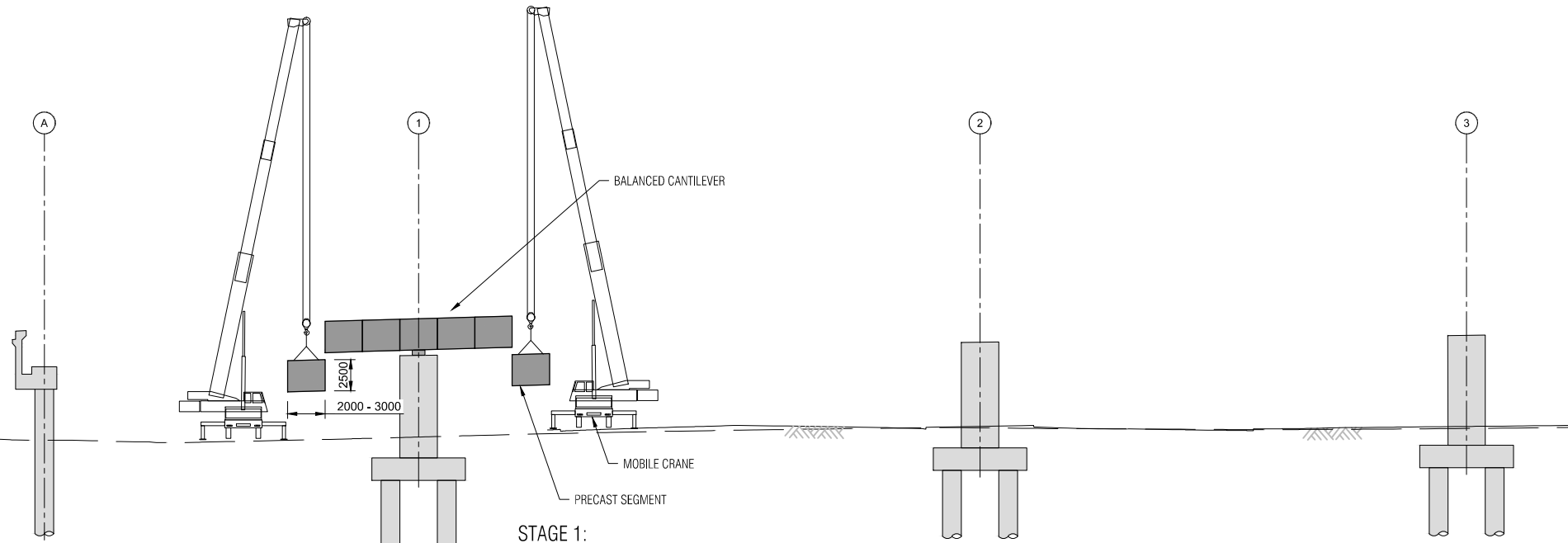


Project:	AUCKLAND TRANSPORT AMETI EASTERN BUSWAY 2 AND 3
Drawing Title:	EB2 REEVES ROAD FLYOVER 3D VIEW

Drawing Status:	DRAFT		
Drawing Date:	04.09.19		
Scale:	A1 NTS	A3 NTS	NTS
Drawing No.:	AMETI-SD-DRG-EB2-410-1523		Revision: C

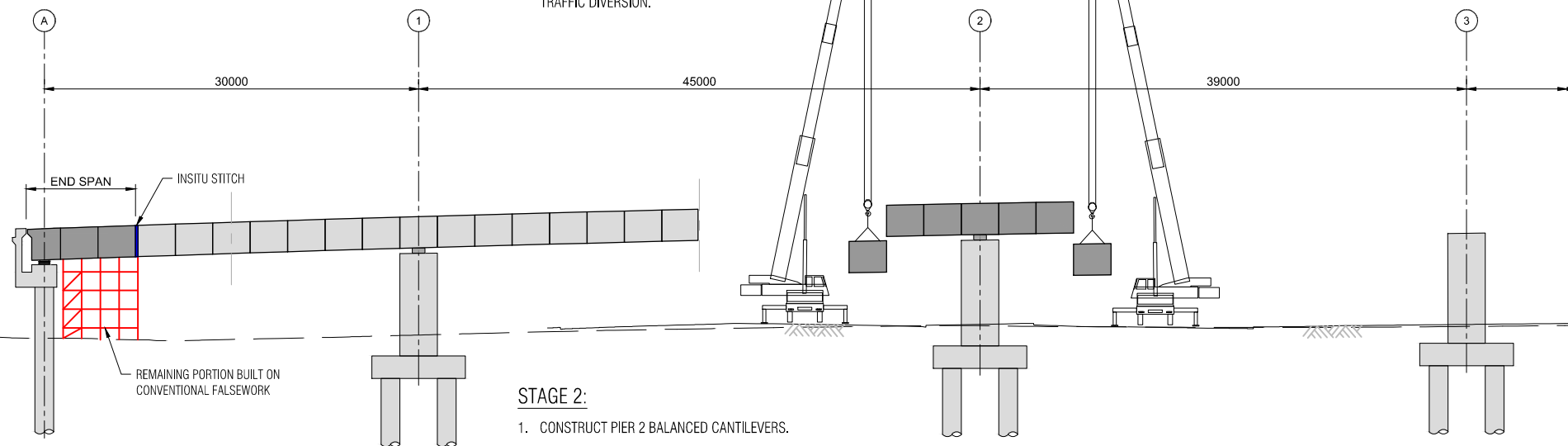
NOT FOR CONSTRUCTION

C:\Users\andrew.poulgrain\Documents\AMETI_FINAL_DRAFT_SD\PPW_EP\PORT\400_STR_BEC\AMETI_SD_DRG_EB2-410-1531.dwg



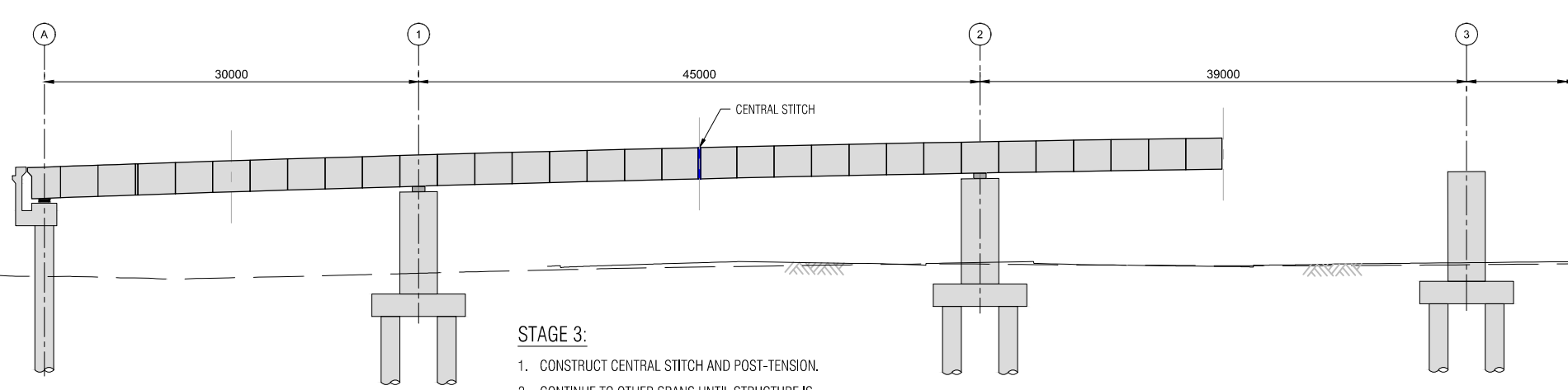
STAGE 1:

1. COMPLETE PILING, PILECAP AND PIER CONSTRUCTION.
2. IMPLEMENT TRAFFIC DIVERSION AS REQUIRED.
3. CONSTRUCT PIER 1 BALANCED CANTILEVERS WITH TRAFFIC DIVERSION.



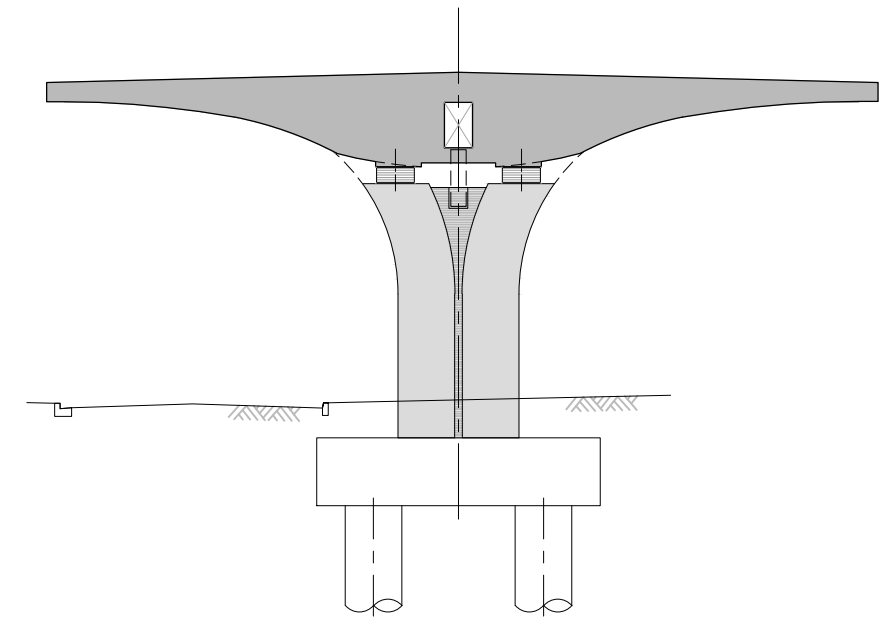
STAGE 2:

1. CONSTRUCT PIER 2 BALANCED CANTILEVERS.
2. CONSTRUCT END SPANS ON FALSEWORKS (ABUTMENT A & B).



STAGE 3:

1. CONSTRUCT CENTRAL STITCH AND POST-TENSION.
2. CONTINUE TO OTHER SPANS UNTIL STRUCTURE IS COMPLETE.



TYPICAL SECTION AT PIER

Scale 1:100 (A1), 1:200 (A3)

(DRAWN FOR PIER 1 - 4 & 7 - 10. PIERS 5 & 6 SIMILAR BUT SUBSTRUCTURE INTEGRAL WITH SUPERSTRUCTURE)

NOTES:

1. REFER TO DRAWING AMETI-EB2-410-1511 FOR NOTES.



ORIGINAL SIZE A1

REV	DESCRIPTION	DATE	BY	CHECKED
B	FINAL DRAFT SPECIMEN DESIGN	04.09.19	AP	
A	DRAFT SPECIMEN DESIGN	14.12.18	LN	
	REVISIONS			

SURVEYED	N/A	
DRAWN	L. NARAYAN	14.12.18
DRAWING CHECK	A. POULGRAIN	30.08.19
DESIGN	K. RAMASWAMY	14.12.18
DESIGN CHECK	I. FLETT	04.09.19
APPROVED	A. LEES	04.09.19



Project: AUCKLAND TRANSPORT
AMETI EASTERN BUSWAY 2 AND 3
Drawing Title: EB2 REEVES ROAD FLYOVER
CONSTRUCTION STAGING

NOT FOR CONSTRUCTION

Drawing Status: DRAFT			
Drawing Date: 04.09.19			
A1	1:100, 1:250	A3	1:200, 1:500
Drawing No. AMETI-SD-DRG-EB2-410-1531			
			Revision: B



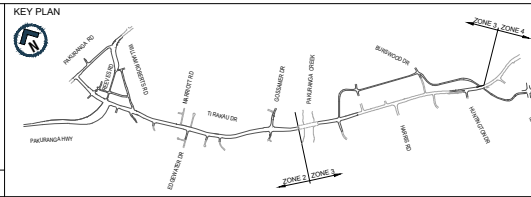
Appendix 4: Pakuranga Bus Station – Short List Alt. Options



Last saved by: SERGEY.SOKOLOV(2021-06-08) Last Plotted: 2021-06-08
Filename: EB234-1-RD-SK-Z2-00118.DWG

DRAWN	DRAWING CHECK
DESIGNED	DESIGN REVIEW
APPROVED	APPROVED DATE

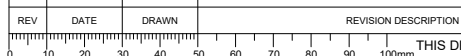
This drawing is confidential and shall only be used for the purpose of this project. The signing of this title block confirms the design and drafting of this project have been prepared and checked in accordance with the Alliance quality assurance system to ISO 9001. Printed copies of this document are UNCONTROLLED. Do not scale from this drawing.



AUCKLAND MANUKAU EASTERN TRANSPORT INITIATIVE
EASTERN BUSWAY STAGES 2, 3 AND 4
(PAKURANGA TO BOTANY)

Fletcher | Acciona | AECOM | Jacobs

DRAWING STATUS	PRICING	NOT FOR CONSTRUCTION
DRAWING TITLE	ZONE 2 - TI RAKAU DRIVE	
OPTION	OPTION J	
VERSION	VERSION 1	
SCALE	1:1000(A1) 1:2000(A3)	SHEET SIZE
DRAWING No	A1	REV
EB234-1-RD-SK-Z2-00118		



THIS DRAWING MAY CONTAIN COLOUR CONTENT. CORRECTLY PRINTED COPIES OF THIS DOCUMENT WILL DISPLAY ALLIANCE LOGO IN COLOUR.

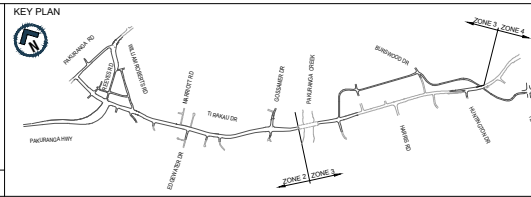


Last saved by: DRINKR(2021-06-15) Last Plotted: 2021-06-15
Filename: EB234-1-RD-SK-ZZ-00119.DWG

DRAWN	DRAWING CHECK
DESIGNED	DESIGN REVIEW
APPROVED	APPROVED DATE

REV	DATE	DRAWN	REVISION DESCRIPTION

This drawing is confidential and shall only be used for the purpose of this project. The signing of this title block confirms the design and drafting of this project have been prepared and checked in accordance with the Alliance quality assurance system to ISO 9001. Printed copies of this document are UNCONTROLLED. Do not scale from this drawing.



AUCKLAND MANUKAU EASTERN TRANSPORT INITIATIVE
EASTERN BUSWAY STAGES 2, 3 AND 4
(PAKURANGA TO BOTANY)



Fletcher | Acciona | AECOM | Jacobs

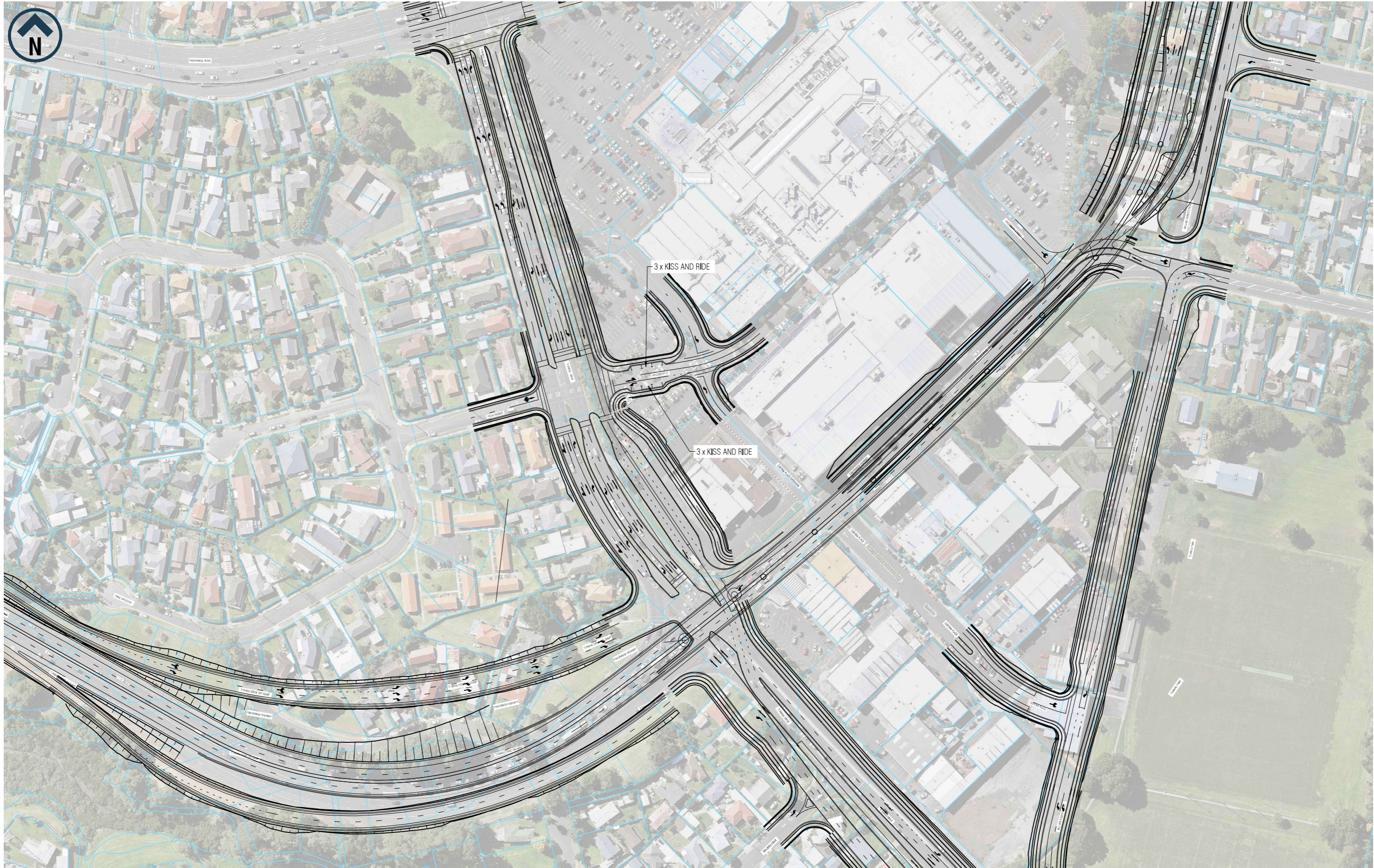
DRAWING STATUS: **PRICING** **NOT FOR CONSTRUCTION**

DRAWING TITLE: **ZONE 2 - TI RAKAU DRIVE**
OPTION J - LAND ACQUISITION

SCALE: 1:1000(A1) 1:2000(A3) SHEET SIZE: A1 DRAWING No: EB234-1-RD-SK-ZZ-00119 REV

0 10 20 30 40 50 60 70 80 90 100mm

THIS DRAWING MAY CONTAIN COLOUR CONTENT. CORRECTLY PRINTED COPIES OF THIS DOCUMENT WILL DISPLAY ALLIANCE LOGO IN COLOUR.

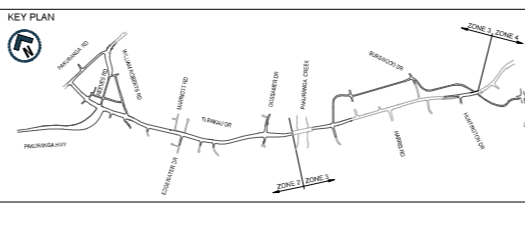


Last saved by: SERGEY.SOKOLOV(2021-05-05) Last Plotted: 2021-05-05
Filename: EB234-1-RD-SK-Z2-00097.DWG

REV	DATE	DRAWN	REVISION DESCRIPTION

DRAWN	DRAWING CHECK
DESIGNED	DESIGN REVIEW
APPROVED	APPROVED DATE

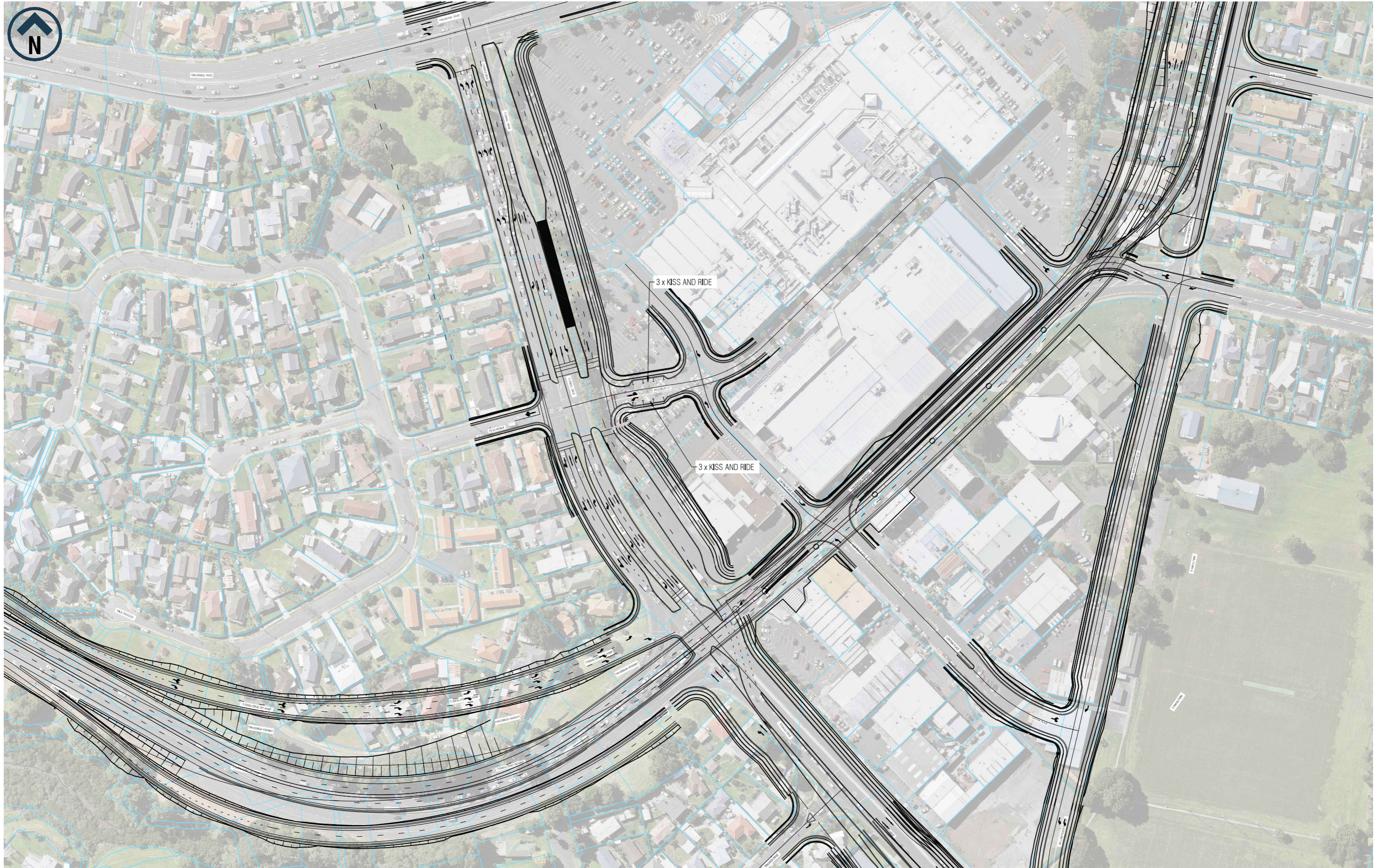
This drawing is confidential and shall only be used for the purpose of this project. The signing of this title block confirms the design and drafting of this project have been prepared and checked in accordance with the Alliance quality assurance system to ISO 9001. Printed copies of this document are UNCONTROLLED. Do not scale from this drawing.
THIS DRAWING MAY CONTAIN COLOUR CONTENT. CORRECTLY PRINTED COPIES OF THIS DOCUMENT WILL DISPLAY ALLIANCE LOGO IN COLOUR.



AUCKLAND MANUKAU EASTERN TRANSPORT INITIATIVE
EASTERN BUSWAY STAGES 2, 3 AND 4
(PAKURANGA TO BOTANY)

Fletcher | Acciona | AECOM | Jacobs

DRAWING STATUS PRICING	NOT FOR CONSTRUCTION	
DRAWING TITLE ZONE 2 - TI RAKAU DRIVE	OPTION A	
SCALE 1:1000(A1) 1:2000(A3)	SHEET SIZE A1	DRAWING No. EB234-1-RD-SK-Z2-00097
		REV

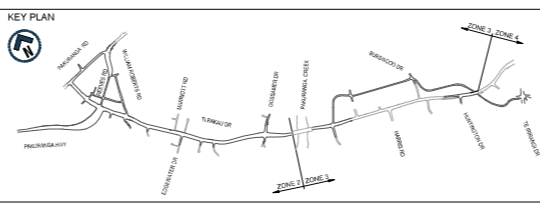


Last saved by: SERGEY.SOKOLOV(2021-05-05) Last Plotted: 2021-05-05
 Filename: EB234-1-RD-SK-Z2-00100.DWG

REV	DATE	DRAWN	REVISION DESCRIPTION

DRAWN	DRAWING CHECK
DESIGNED	DESIGN REVIEW
APPROVED	APPROVED DATE

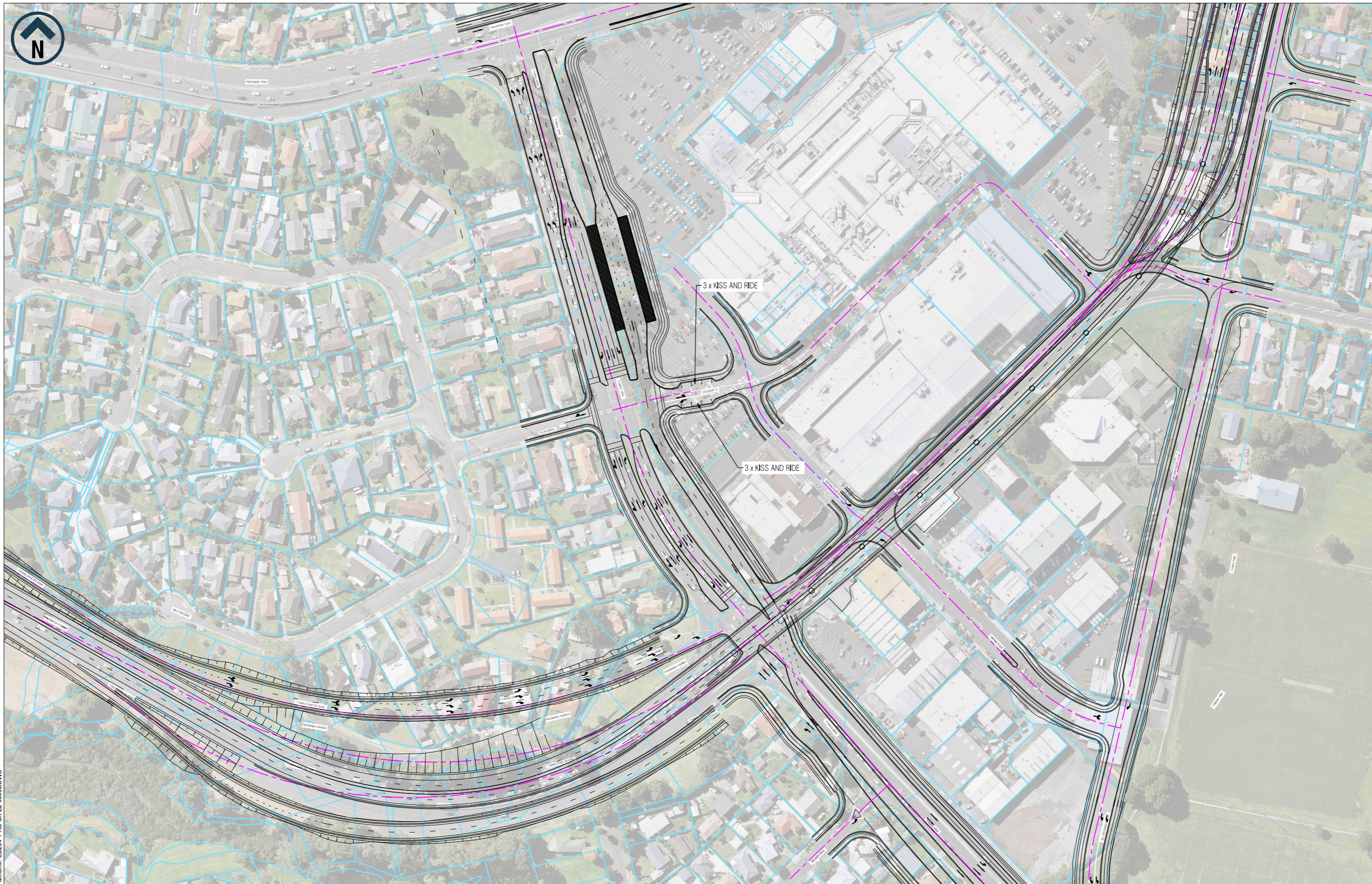
This drawing is confidential and shall only be used for the purpose of this project. The signing of this title block confirms the design and drafting of this project have been prepared and checked in accordance with the Alliance quality assurance system to ISO 9001. Printed copies of this document are UNCONTROLLED. Do not scale from this drawing.
 THIS DRAWING MAY CONTAIN COLOUR CONTENT. CORRECTLY PRINTED COPIES OF THIS DOCUMENT WILL DISPLAY ALLIANCE LOGO IN COLOUR.



AUCKLAND MANUKAU EASTERN TRANSPORT INITIATIVE
EASTERN BUSWAY STAGES 2, 3 AND 4
(PAKURANGA TO BOTANY)

Fletcher | Acciona | AECOM | Jacobs

DRAWING STATUS	PRICING			NOT FOR CONSTRUCTION
DRAWING TITLE	ZONE 2 - TI RAKAU DRIVE OPTION B			
SCALE	1:1000(A1) 1:2000(A3)	SHEET SIZE	A1	DRAWING No
				EB234-1-RD-SK-Z2-00100
				REV



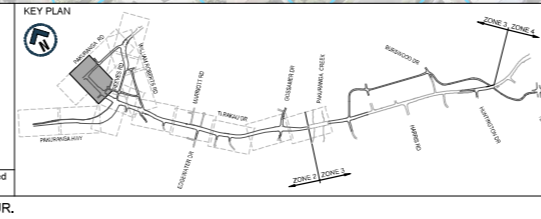
Last saved by: SERGEY.SOKOLOV(2021-05-05) Last Plotted: 2021-05-05
Filename: EB234-1-RD-SK-Z2-00098.DWG

REV	DATE	DRAWN	REVISION DESCRIPTION

DRAWN	DRAWING CHECK
DESIGNED	DESIGN REVIEW
APPROVED	APPROVED DATE

This drawing is confidential and shall only be used for the purpose of this project. The signing of this title block confirms the design and drafting of this project have been prepared and checked in accordance with the Alliance quality assurance system to ISO 9001. Printed copies of this document are UNCONTROLLED. Do not scale from this drawing.

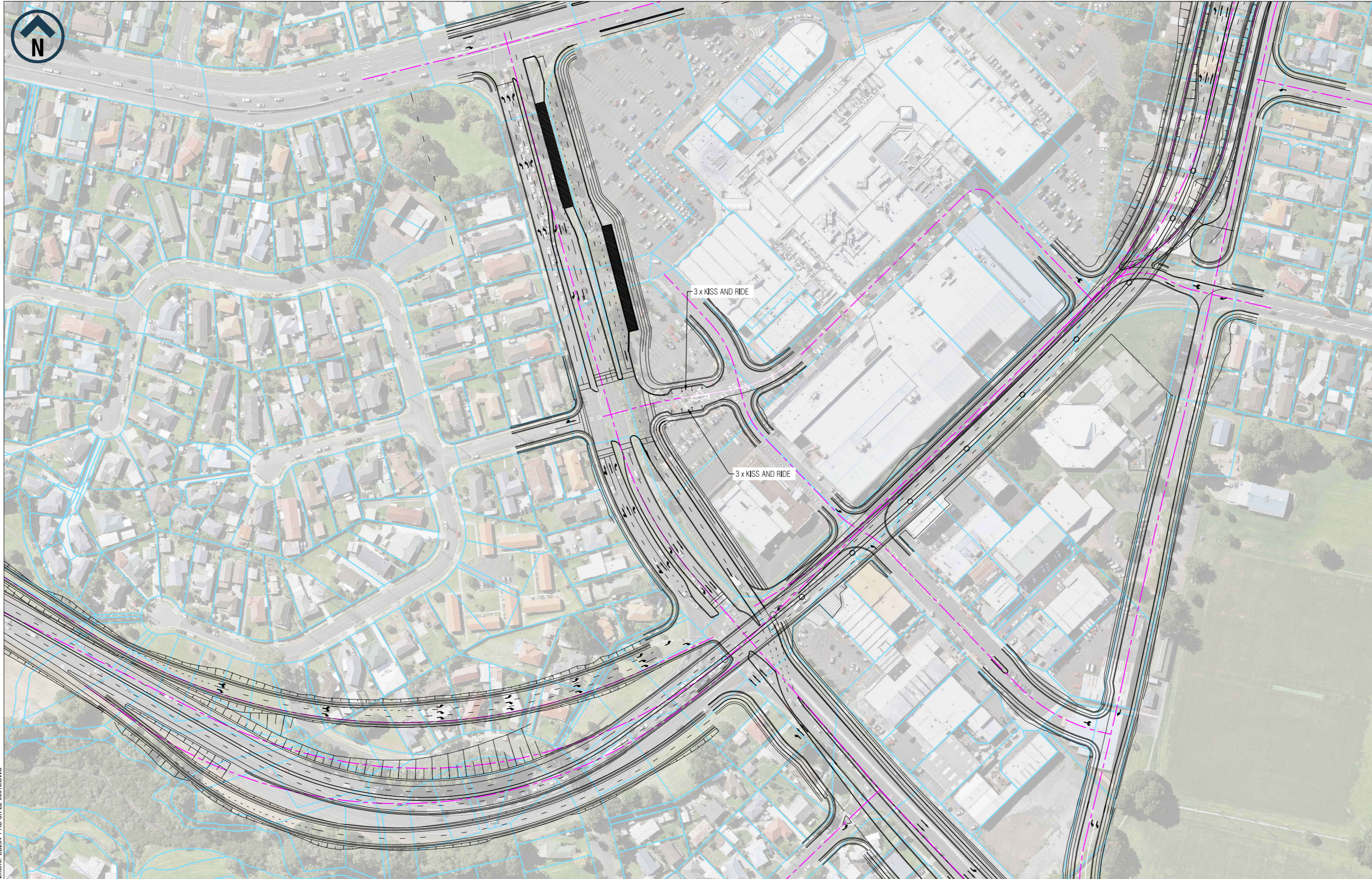
THIS DRAWING MAY CONTAIN COLOUR CONTENT. CORRECTLY PRINTED COPIES OF THIS DOCUMENT WILL DISPLAY ALLIANCE LOGO IN COLOUR.



AUCKLAND MANUKAU EASTERN TRANSPORT INITIATIVE
EASTERN BUSWAY STAGES 2, 3 AND 4
(PAKURANGA TO BOTANY)

Fletcher | Acciona | AECOM | Jacobs

DRAWING STATUS PRICING	NOT FOR CONSTRUCTION	
DRAWING TITLE ZONE 2 - TI RAKAU DRIVE OPTION G		
SCALE 1:1000(A1) 1:2000(A3)	SHEET SIZE A1	DRAWING No. EB234-1-RD-SK-Z2-00098
		REV



Last saved by: SERGEY.SOKOLOV(2021-05-05) Last Plotted: 2021-05-05
Filename: EB234-1-RD-SK-Z2-00310.DWG

REV	DATE	DRAWN	REVISION DESCRIPTION

DRAWN	DRAWING CHECK
DESIGNED	DESIGN REVIEW
APPROVED	APPROVED DATE

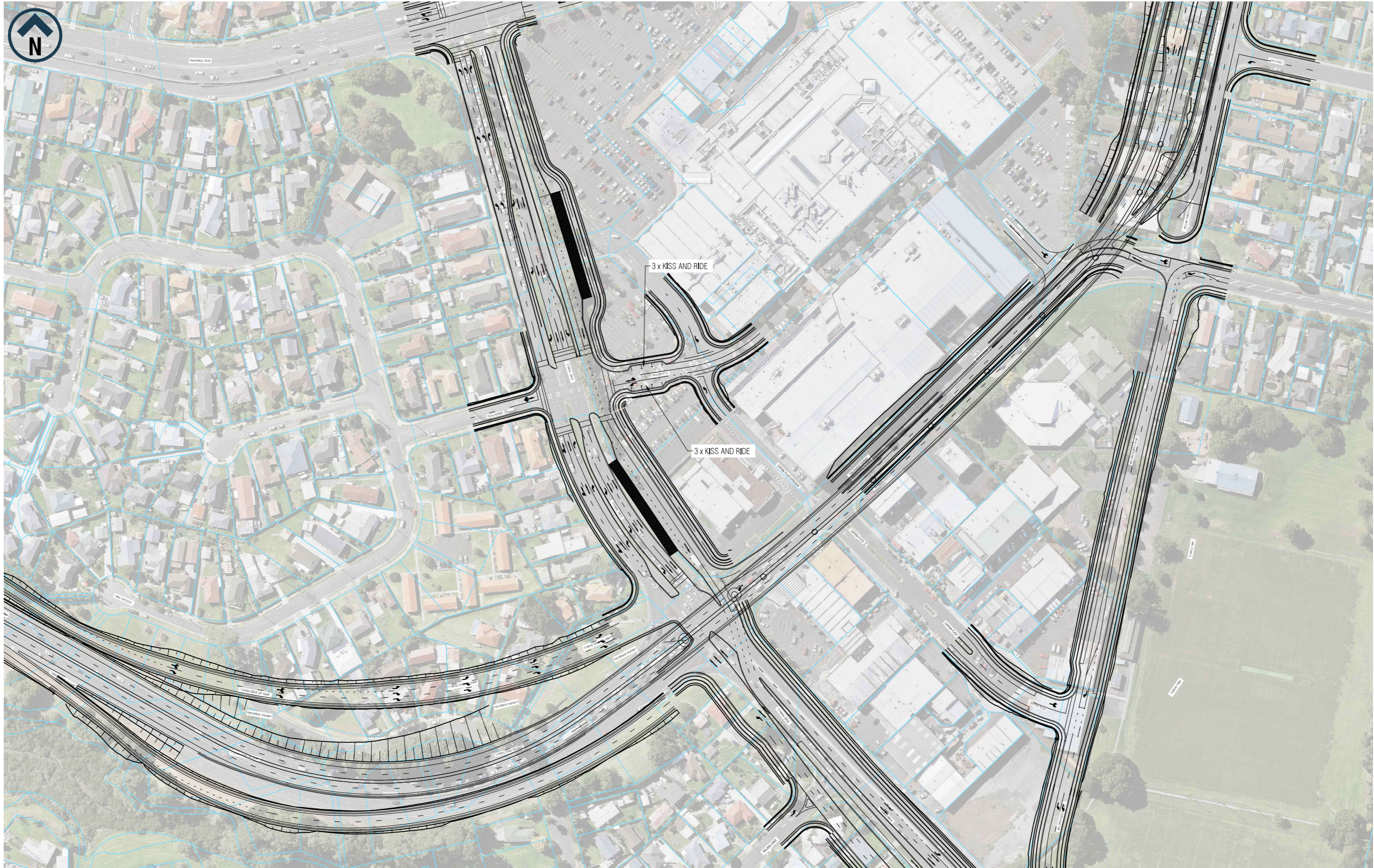
This drawing is confidential and shall only be used for the purpose of this project. The signing of this title block confirms the design and drafting of this project have been prepared and checked in accordance with the Alliance quality assurance system to ISO 9001. Printed copies of this document are UNCONTROLLED. Do not scale from this drawing.
THIS DRAWING MAY CONTAIN COLOUR CONTENT. CORRECTLY PRINTED COPIES OF THIS DOCUMENT WILL DISPLAY ALLIANCE LOGO IN COLOUR.



AUCKLAND MANUKAU EASTERN TRANSPORT INITIATIVE
EASTERN BUSWAY STAGES 2, 3 AND 4
(PAKURANGA TO BOTANY)

Fletcher | Acciona | AECOM | Jacobs

DRAWING STATUS PRICING	NOT FOR CONSTRUCTION	
DRAWING TITLE ZONE 2 - TI RAKAU DRIVE	OPTION H	
SCALE 1:1000(A1) 1:2000(A3)	SHEET SIZE A1	DRAWING No. EB234-1-RD-SK-Z2-00310
REV		



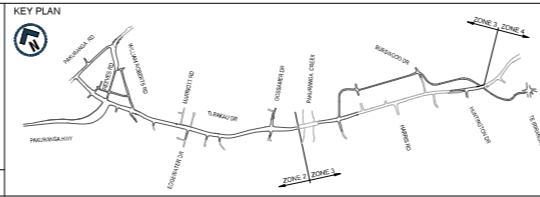
Last saved by: SERGEY.SOKOLOV(2021-05-05) Last Plotted: 2021-05-05
Filename: EB234-1-RD-SK-Z2-00106.DWG

REV	DATE	DRAWN	REVISION DESCRIPTION

DRAWN	DRAWING CHECK
DESIGNED	DESIGN REVIEW
APPROVED	APPROVED DATE

This drawing is confidential and shall only be used for the purpose of this project. The signing of this title block confirms the design and drafting of this project have been prepared and checked in accordance with the Alliance quality assurance system to ISO 9001. Printed copies of this document are UNCONTROLLED. Do not scale from this drawing.

THIS DRAWING MAY CONTAIN COLOUR CONTENT. CORRECTLY PRINTED COPIES OF THIS DOCUMENT WILL DISPLAY ALLIANCE LOGO IN COLOUR.



AUCKLAND MANUKAU EASTERN TRANSPORT INITIATIVE
EASTERN BUSWAY STAGES 2, 3 AND 4
(PAKURANGA TO BOTANY)

Fletcher | Acciona | AECOM | Jacobs

DRAWING STATUS		NOT FOR CONSTRUCTION	
DRAWING TITLE			
ZONE 2 - TI RAKAU DRIVE			
OPTION I			
SCALE	SHEET SIZE	DRAWING No	REV
1:1000(A1) 1:2000(A3)	A1	EB234-1-RD-SK-Z2-00106	



Appendix 5: Pakuranga Bus Station – MCA Scoring Framework

The following tables provide the outcome of the MCA scoring for Pakuranga Bus Station options.

MCA TOPIC		KEY RESULTS AREA/ CRITERIA	OWNER	OPTION A	OPTION B	OPTION G	OPTION H	OPTION I	OPTION J
Project Objectives	1	Provide a multimodal transport corridor that connects Pakuranga and Botany to the wider network and increases choice of transport operations	Shane Doran/ Chris Bentley	3	3	3	3	3	3
	2	Provide transport infrastructure that integrates with existing land use and supports a quality, compact urban form	Chris Bentley	2	-2	2	-2	-2	-2
	3	Contribute to accessibility and place shaping by providing better transport connections between, within and to the town centres	Chris Bentley	2	-2	1	-1	-2	-2
	4	Provide transport infrastructure that improves linkages, journey time and reliability of the public transport network	Shane Doran	3	3	3	3	3	3
	5	Provide transport infrastructure that is safe for everyone	Shane Doran	3	2	2	1	2	2
Legislative Considerations	6	Assessment against critical legislative requirements	Alisdair Simpson	0	0	0	0	0	0
	7	Can the option be constructed within reasonable and known construction constraints	Andy Gibbard	-1	-1	-1	-1	-1	-2
	8a	Traffic and Transport effects - construction	Shane Doran	-1	-1	-1	-1	-1	-1

Built Environment	8b	Traffic and Transport effects - operational	Shane Doran	3	3	3	3	3	3
	9	Property implications	Fenella Fischer	-1	-1	-1	-1	-1	-2
	10	Impacts on utilities and significant infrastructure	Simon Jones/ Laurance Wong/ Ashok Hirani	0	0	0	0	0	-1
	11	Permanent effects - Connectivity (circulation)	Shane Doran	3	2	2	1	2	2
	12	Permanent effects - Built form	Chris Bentley	2	-1	1	-1	-1	-2
	13	Permanent effects - Activities/ use	Chris Bentley	2	-1	1	-1	-1	-1
	14	Permanent effects - Visual amenity	Chris Bentley	-1	-1	-1	-1	-2	-2
	15	Permanent effects - Associate elements	Chris Bentley	-1	-1	-1	-1	-1	-1
				18	2	13	1	1	-3

Location Assessment

Benefit		Stakeholder Outcomes	KPI	OWNER	OPTIO N A	OPTIO N B	OPTIO N G	OPTIO N H	OPTIO N I	OPTIO N J
Integration	16	A facility integrated with the proposed town centre development	Enables opportunities for an active edge to town centre development	Chris Bentley	2	-2	-1	-2	-2	-2
	17	Provides safe and improved multi-modal connectivity with surrounding neighbourhoods, reserves and with town centre facilities	Safe active mode connection to, and around the interchange centre	Shane Doran	3	3	3	3	3	3
	18	Reduced journey times and improved reliability for buses, while ensuring the resilience of the network	Reduced barrier across Ti Rakau Drive, improve Town Centre frontage	Shane Doran	3	3	3	3	3	3
Transport	19	Meets forecast public transport demand and enables expansion/ or	Efficient and safe bus access and egress	Shane Doran	3	3	3	3	3	3
	20		Accommodates at least 6 bus bays with room for further growth	Shane Doran	2	2	3	1	2	2

Customer	21	modification to allow future growth beyond 2041 Serves through passengers during peak periods well, by enabling improvements to journey times, frequency and reliability of the transport network	Convenient location for though passengers with minimised perception of journey time delay	Shane Doran	3	3	3	3	3	3
	22	Comfort and quality of waiting environment and connections with surrounding areas	Comfort, legibility and quality of waiting environment and connections with surrounding areas	Shane Doran	3	2	2	1	2	2
	23	Priority provide for access to and from and around the station by cyclist	Priority provided for cycle access to and from and around the station	Shane Doran	3	3	3	3	3	3
Value	24	Maximise the benefits to the transport network and the surrounding land use from the proposed investment in transport infrastructure	Comparable land acquisition sq.m required (score captured in Assessment criteria)	Fenella Fischer	0	0	0	0	0	0
					22	17	19	15	17	17

Combined Scores

	Alt Option A	Alt Option B	Alt Option G	Alt Option H	Alt Option I	Alt Option J
Assessment Criteria Score	18	2	13	1	1	-3
Location Assessment Criteria Score	22	17	19	15	17	17
Total Combined Score	40	19	32	16	18	14
RANKED BY TOTALS:	1st	3rd	2nd	5th	4th	6th