

Appendix F – Vibration Maps



Legend

Vibration category

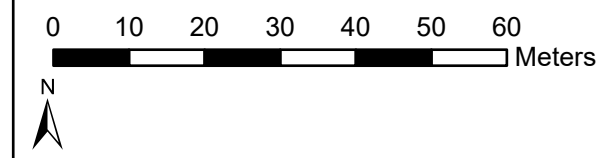
- 5 mm/s PPV Category B Vibration Criterion
- 20 mm/s PPV DIN 4150 Commercial Vibration Criterion

Vibration Classification

- Commercial
- Residential
- Works area

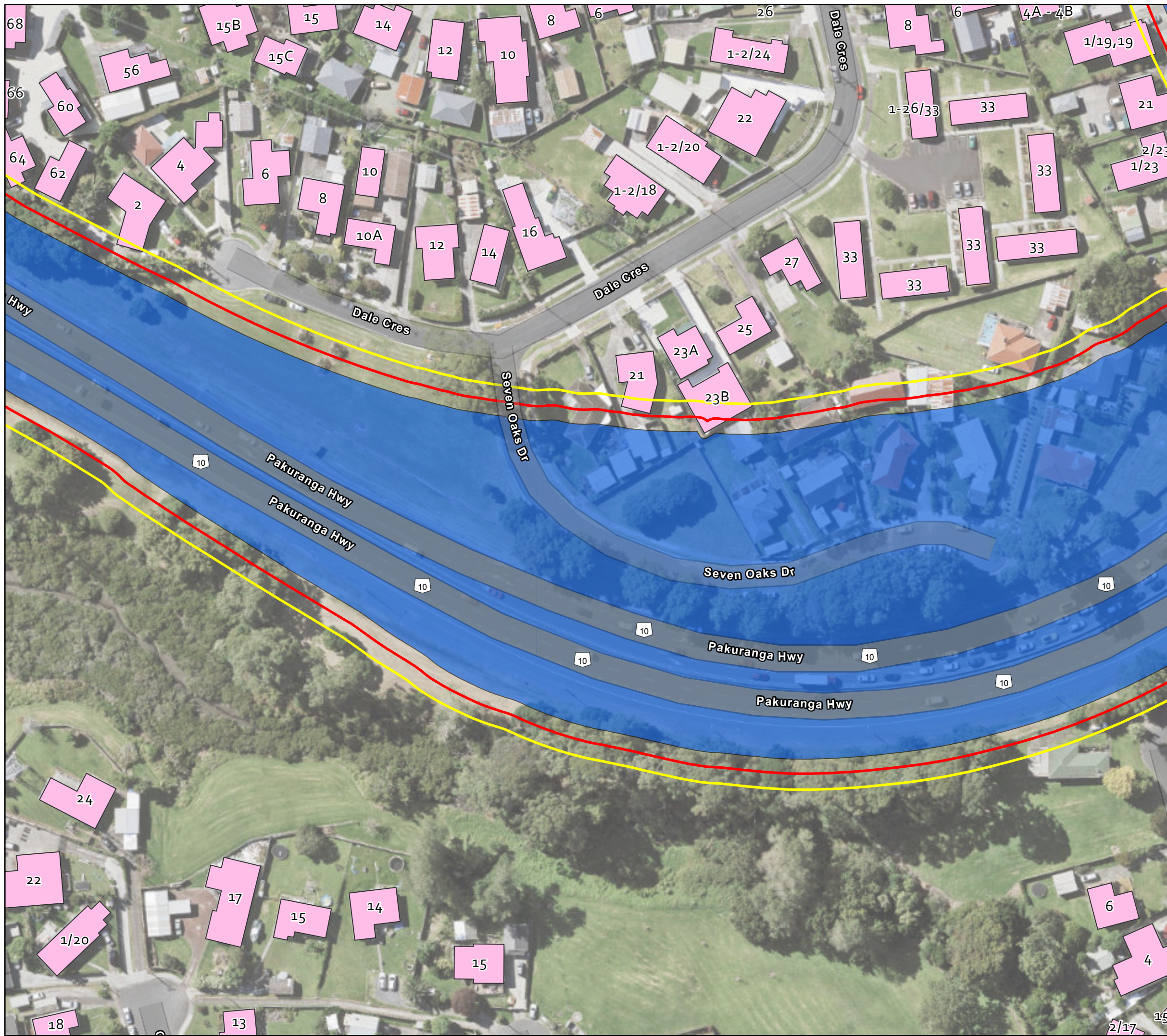
EB2EB3R Predicted Construction Vibration

Page 2 of 19



Map Creation Date: 6/30/2022
 Author:

This map is shown for reference purposes only. EBA provides this information "as is" with the understanding that it is not guaranteed to be accurate, correct or complete and conclusions drawn from such information are the responsibility of the user. While every effort is made to ensure the information displayed is as accurate and current as possible, EBA will not be held responsible for any loss, damage or inconvenience caused as a result of reliance on such information or data.



Legend

Vibration category

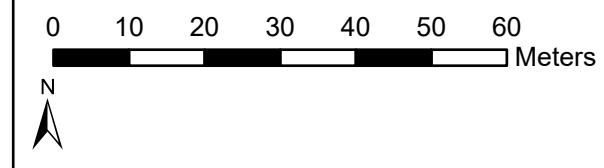
- 5 mm/s PPV Category B Vibration Criterion
- 20 mm/s PPV DIN 4150 Commercial Vibration Criterion

Vibration Classification

- Commercial
- Residential
- Works area

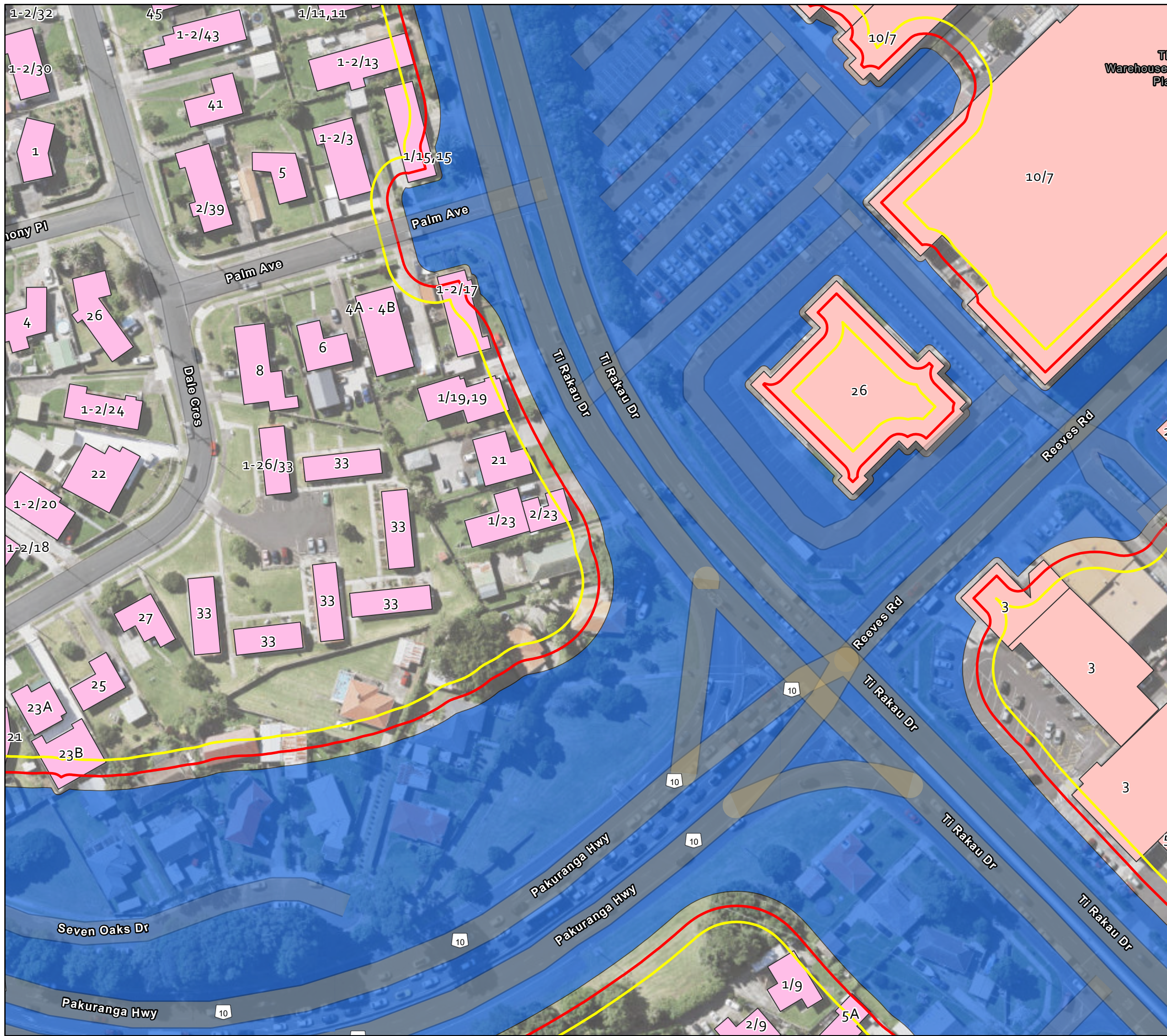
EB2EB3R Predicted Construction Vibration

Page 3 of 19



Map Creation Date: 6/30/2022
 Author:

This map is shown for reference purposes only. EBA provides this information "as is" with the understanding that it is not guaranteed to be accurate, correct or complete and conclusions drawn from such information are the responsibility of the user. While every effort is made to ensure the information displayed is as accurate and current as possible, EBA will not be held responsible for any loss, damage or inconvenience caused as a result of reliance on such information or data.

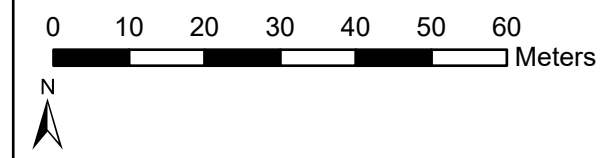


Legend
Vibration category
 5 mm/s PPV Category B Vibration Criterion
 20 mm/s PPV DIN 4150 Commercial Vibration Criterion

Vibration Classification
 Commercial
 Residential
 Works area

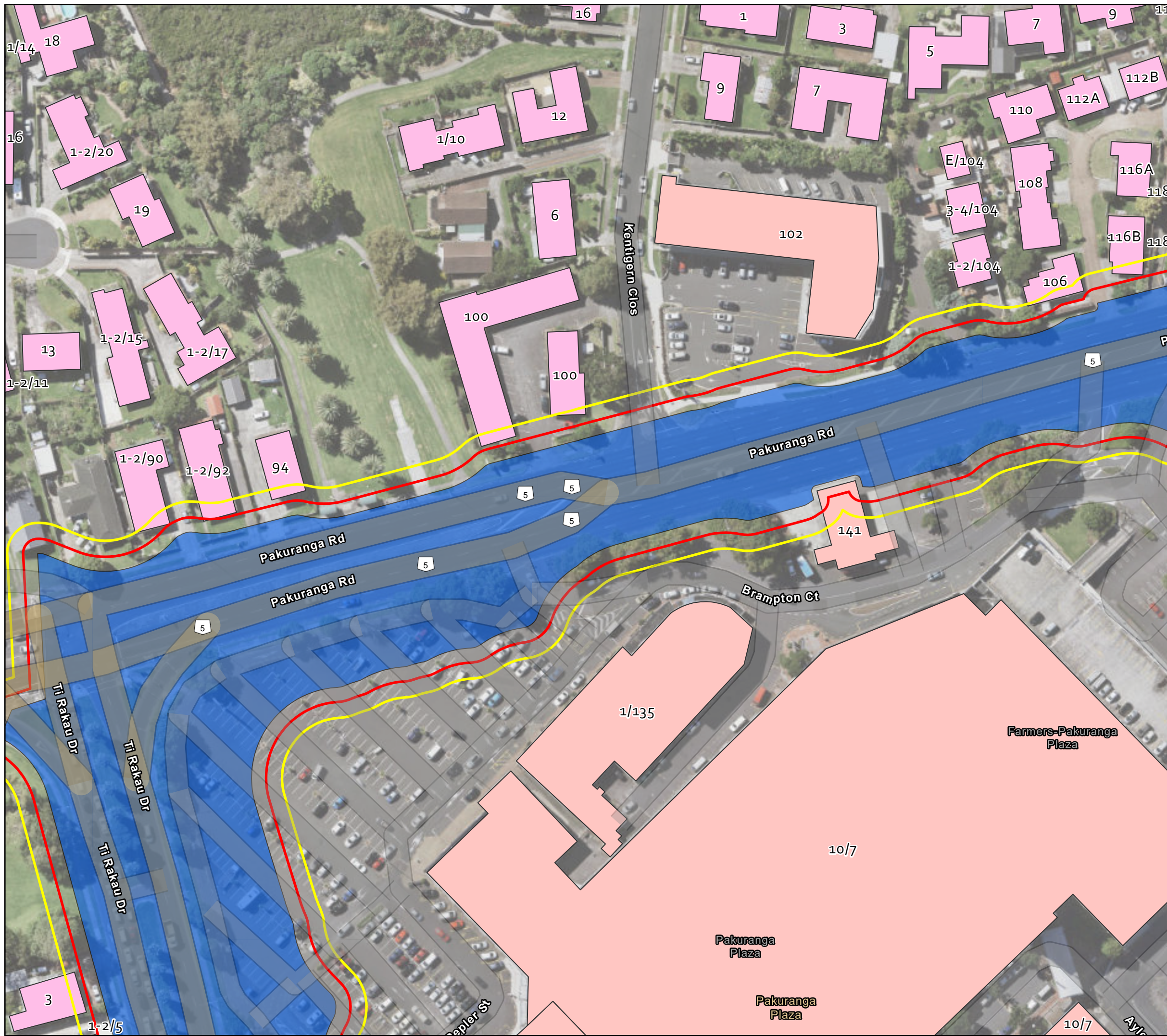
EB2EB3R Predicted Construction Vibration

Page 4 of 19



Map Creation Date: 6/30/2022
 Author:

This map is shown for reference purposes only. EBA provides this information "as is" with the understanding that it is not guaranteed to be accurate, correct or complete and conclusions drawn from such information are the responsibility of the user. While every effort is made to ensure the information displayed is as accurate and current as possible, EBA will not be held responsible for any loss, damage or inconvenience caused as a result of reliance on such information or data.



Legend

Vibration category

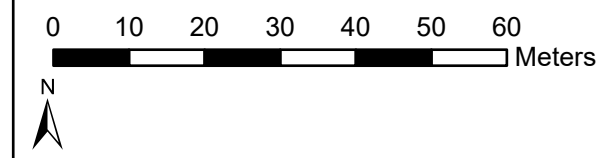
- 5 mm/s PPV Category B Vibration Criterion
- 20 mm/s PPV DIN 4150 Commercial Vibration Criterion

Vibration Classification

- Commercial
- Residential
- Works area

EB2EB3R Predicted Construction Vibration

Page 6 of 19



Service Layer Credits: Hybrid Reference Layer: Esri Community Maps Contributors, LINZ, Stats NZ, Eagle Technology, Esri, HERE, Garmin, METI/NASA, USGS, newzealand: Eagle Technology, Land Information New Zealand, CEBCO, Community maps contributors

Map Creation Date: 6/30/2022
 Author:
 This map is shown for reference purposes only. EBA provides this information "as is" with the understanding that it is not guaranteed to be accurate, correct or complete and conclusions drawn from such information are the responsibility of the user. While every effort is made to ensure the information displayed is as accurate and current as possible, EBA will not be held responsible for any loss, damage or inconvenience caused as a result of reliance on such information or data.

Eastern Busway Alliance

Fletcher | Halcrow | AECOM | Jacobs



Legend

Vibration category

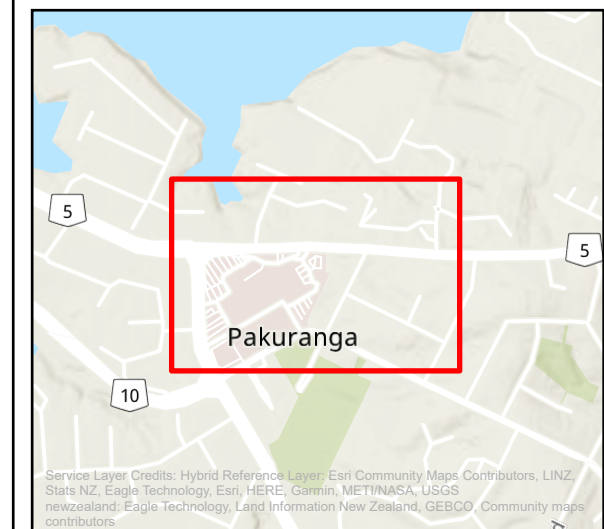
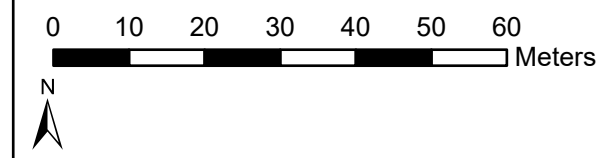
- 5 mm/s PPV Category B Vibration Criterion
- 20 mm/s PPV DIN 4150 Commercial Vibration Criterion

Vibration Classification

- Commercial
- Residential
- Works area

EB2EB3R Predicted Construction Vibration

Page 7 of 19



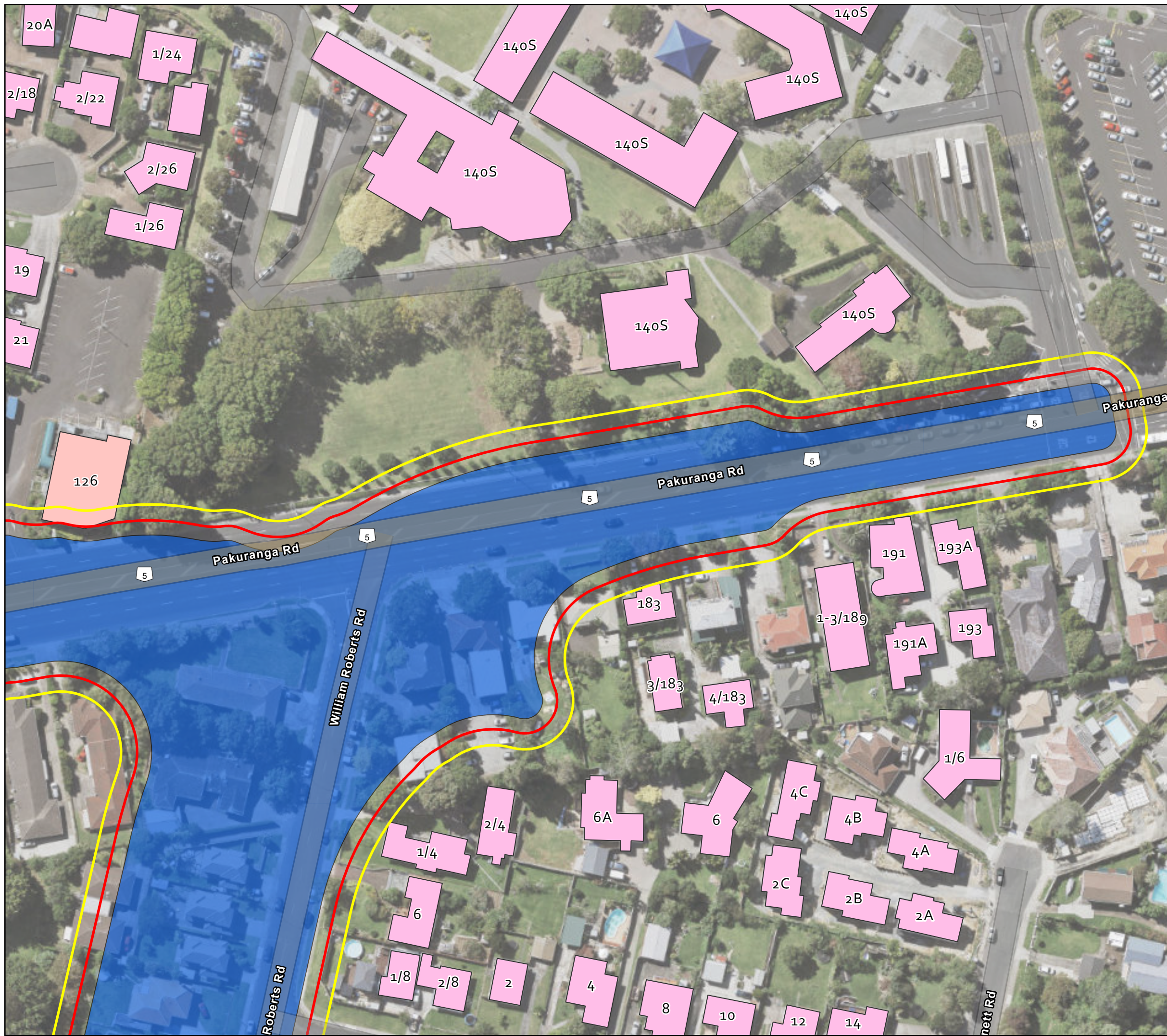
Service Layer Credits: Hybrid Reference Layer: Esri Community Maps Contributors, LINZ Stats NZ, Eagle Technology, Esri, HERE, Garmin, METI/NASA, USGS newzealand; Eagle Technology, Land Information New Zealand, GEBCO, Community maps contributors

Map Creation Date: 6/30/2022
 Author:

This map is shown for reference purposes only. EBA provides this information "as is" with the understanding that it is not guaranteed to be accurate, correct or complete and conclusions drawn from such information are the responsibility of the user. While every effort is made to ensure the information displayed is as accurate and current as possible, EBA will not be held responsible for any loss, damage or inconvenience caused as a result of reliance on such information or data.

Eastern Busway Alliance

Fletcher | Hacciona | AECOM | Jacobs



Legend

Vibration category

5 mm/s PPV Category B Vibration Criterion

20 mm/s PPV DIN 4150 Commercial Vibration Criterion

Vibration Classification

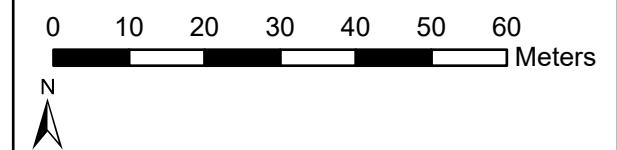
Commercial

Residential

Works area

EB2EB3R Predicted Construction Vibration

Page 8 of 19



Map Creation Date: 6/30/2022

Author:

This map is shown for reference purposes only. EBA provides this information "as is" with the understanding that it is not guaranteed to be accurate, correct or complete and conclusions drawn from such information are the responsibility of the user. While every effort is made to ensure the information displayed is as accurate and current as possible, EBA will not be held responsible for any loss, damage or inconvenience caused as a result of reliance on such information or data.



Legend

Vibration category

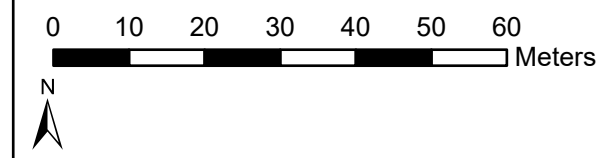
- 5 mm/s PPV Category B Vibration Criterion
- 20 mm/s PPV DIN 4150 Commercial Vibration Criterion

Vibration Classification

- Commercial
- Residential
- Works area

EB2EB3R Predicted Construction Vibration

Page 9 of 19



Map Creation Date: 6/30/2022
 Author:
 This map is shown for reference purposes only. EBA provides this information "as is" with the understanding that it is not guaranteed to be accurate, correct or complete and conclusions drawn from such information are the responsibility of the user. While every effort is made to ensure the information displayed is as accurate and current as possible, EBA will not be held responsible for any loss, damage or inconvenience caused as a result of reliance on such information or data.



Legend

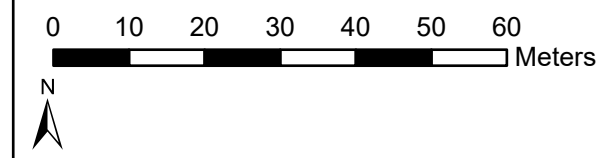
Vibration category

- 5 mm/s PPV Category B Vibration Criterion
- 20 mm/s PPV DIN 4150 Commercial Vibration Criterion

Vibration Classification

- Commercial
- Residential
- Works area

EB2EB3R Predicted Construction Vibration



Map Creation Date: 6/30/2022
 Author:

This map is shown for reference purposes only. EBA provides this information "as is" with the understanding that it is not guaranteed to be accurate, correct or complete and conclusions drawn from such information are the responsibility of the user. While every effort is made to ensure the information displayed is as accurate and current as possible, EBA will not be held responsible for any loss, damage or inconvenience caused as a result of reliance on such information or data.



Legend

Vibration category

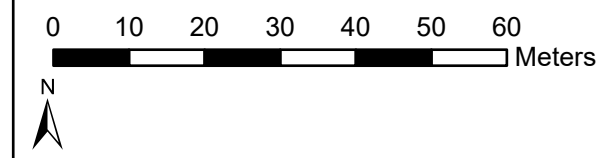
- 5 mm/s PPV Category B Vibration Criterion
- 20 mm/s PPV DIN 4150 Commercial Vibration Criterion

Vibration Classification

- Commercial
- Residential
- Works area

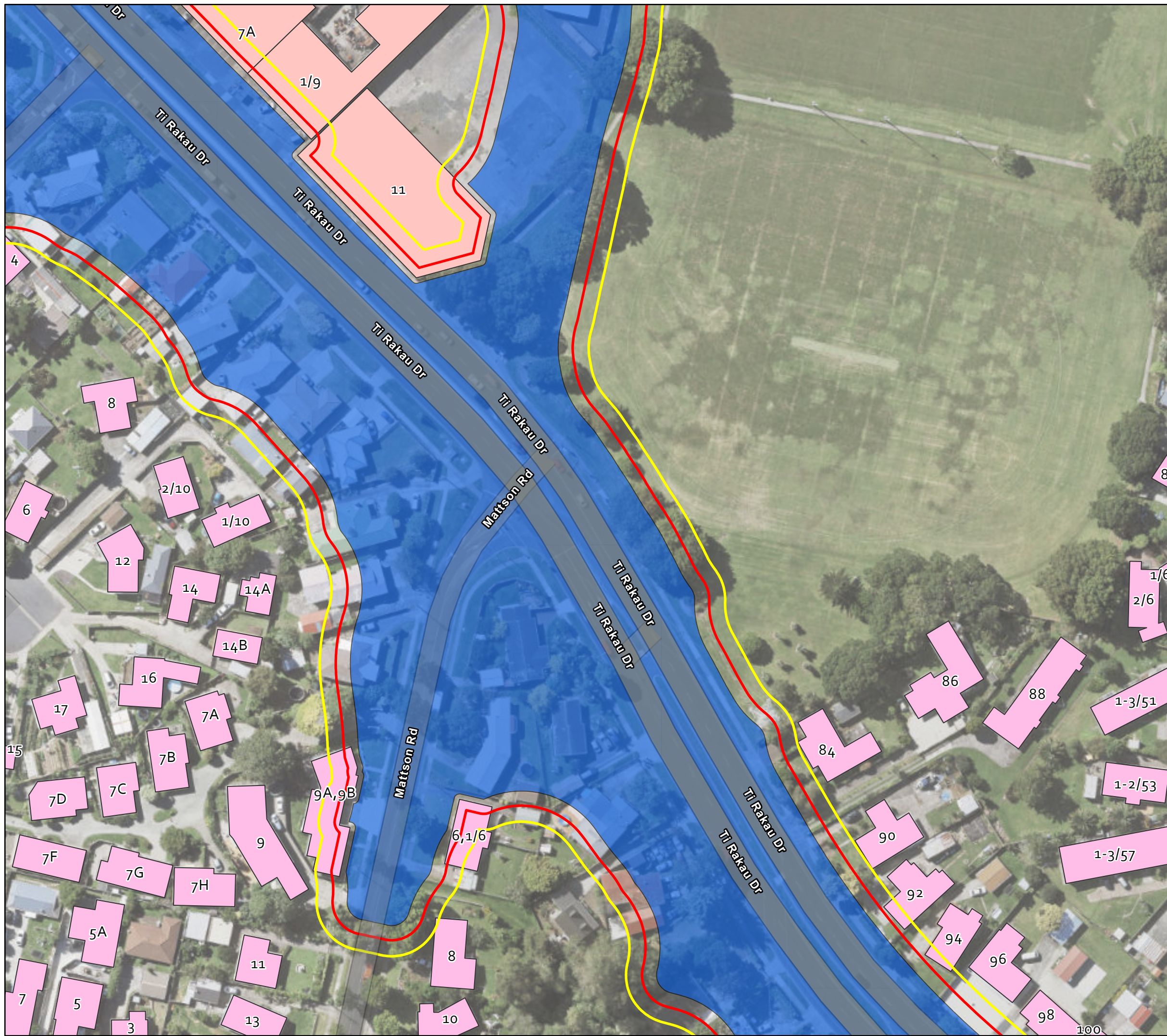
EB2EB3R Predicted Construction Vibration

Page 11 of 19



Map Creation Date: 6/30/2022
 Author:

This map is shown for reference purposes only. EBA provides this information "as is" with the understanding that it is not guaranteed to be accurate, correct or complete and conclusions drawn from such information are the responsibility of the user. While every effort is made to ensure the information displayed is as accurate and current as possible, EBA will not be held responsible for any loss, damage or inconvenience caused as a result of reliance on such information or data.



Legend

Vibration category

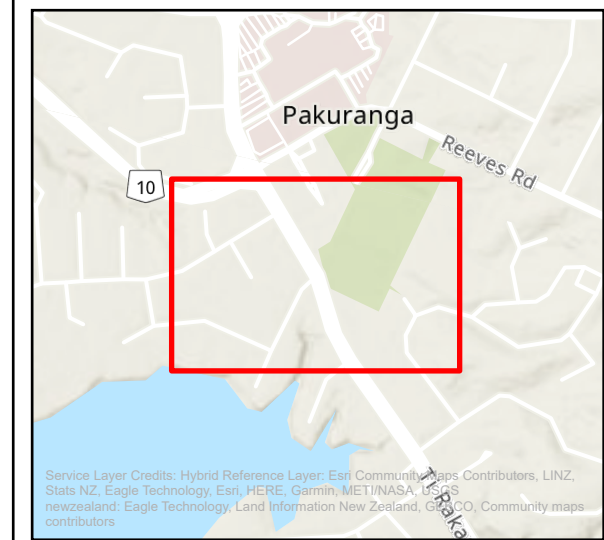
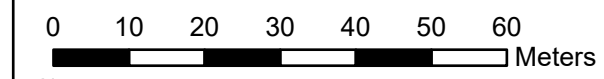
- 5 mm/s PPV Category B Vibration Criterion
- 20 mm/s PPV DIN 4150 Commercial Vibration Criterion

Vibration Classification

- Commercial
- Residential
- Works area

EB2EB3R Predicted Construction Vibration

Page 12 of 19



Map Creation Date: 6/30/2022
 Author:

This map is shown for reference purposes only. EBA provides this information "as is" with the understanding that it is not guaranteed to be accurate, correct or complete and conclusions drawn from such information are the responsibility of the user. While every effort is made to ensure the information displayed is as accurate and current as possible, EBA will not be held responsible for any loss, damage or inconvenience caused as a result of reliance on such information or data.

Eastern Busway Alliance

Fletcher | Halcrow | AECOM | Jacobs



Legend

Vibration category

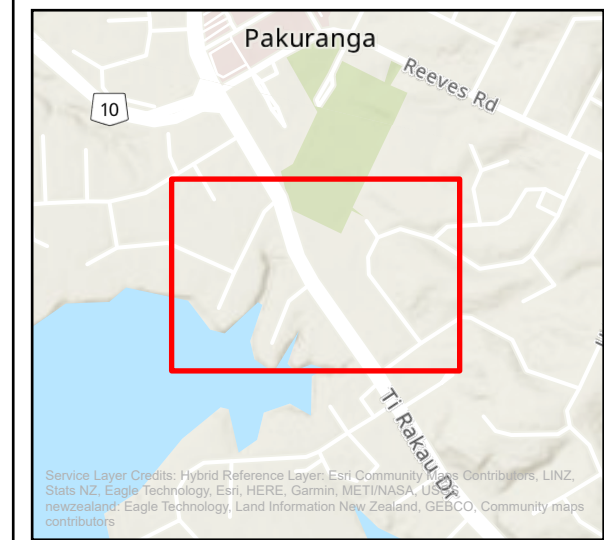
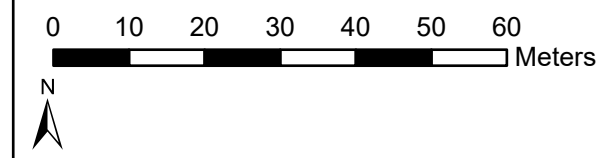
- 5 mm/s PPV Category B Vibration Criterion
- 20 mm/s PPV DIN 4150 Commercial Vibration Criterion

Vibration Classification

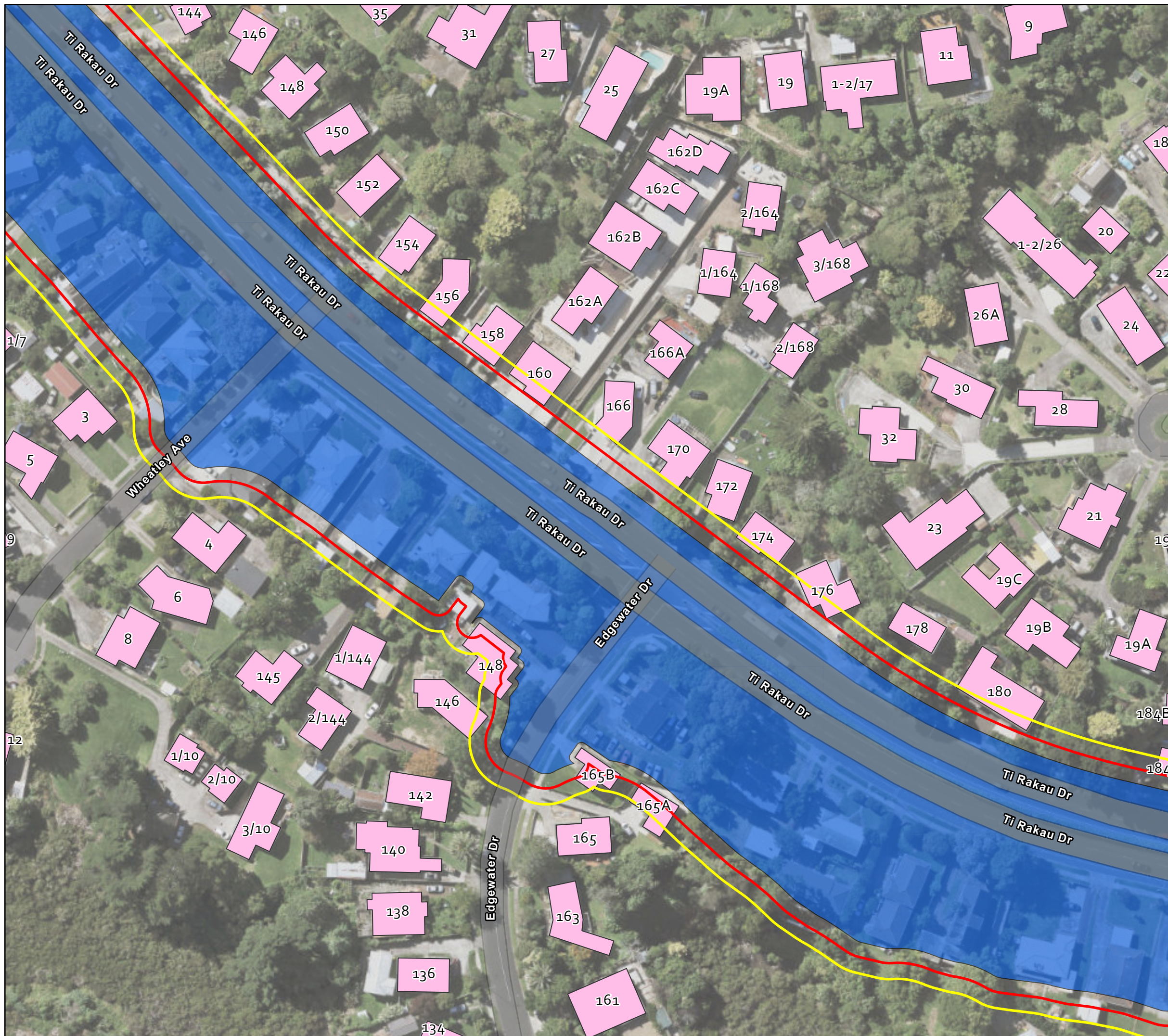
- Commercial
- Residential
- Works area

EB2EB3R Predicted Construction Vibration

Page 13 of 19



Map Creation Date: 6/30/2022
 Author:
 This map is shown for reference purposes only. EBA provides this information "as is" with the understanding that it is not guaranteed to be accurate, correct or complete and conclusions drawn from such information are the responsibility of the user. While every effort is made to ensure the information displayed is as accurate and current as possible, EBA will not be held responsible for any loss, damage or inconvenience caused as a result of reliance on such information or data.



Legend

Vibration category

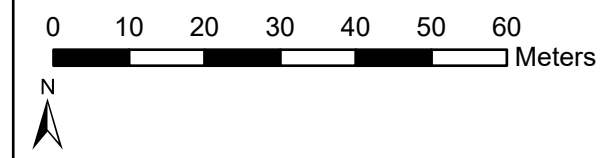
- 5 mm/s PPV Category B Vibration Criterion
- 20 mm/s PPV DIN 4150 Commercial Vibration Criterion

Vibration Classification

- Commercial
- Residential
- Works area

EB2EB3R Predicted Construction Vibration

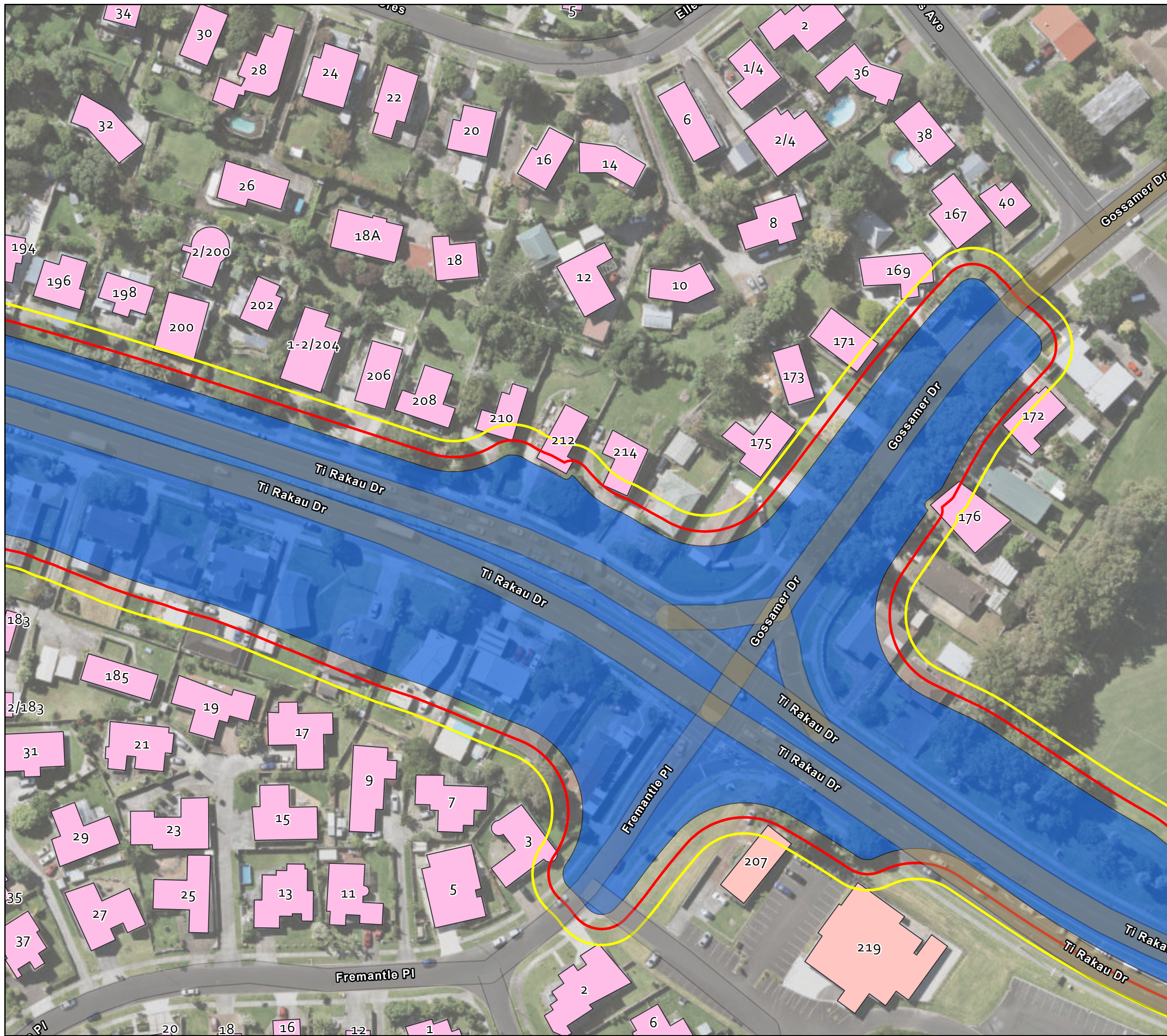
Page 16 of 19



Service Layer Credits: Hybrid Reference Layer: Esri Community Maps Contributors, LINZ, Stats NZ, Eagle Technology, Esri, HERE, Garmin, METI/NASA, USGS, newzealand: Eagle Technology, Land Information New Zealand, GEBCO, Community maps contributors

Map Creation Date: 6/30/2022
 Author:

This map is shown for reference purposes only. EBA provides this information "as is" with the understanding that it is not guaranteed to be accurate, correct or complete and conclusions drawn from such information are the responsibility of the user. While every effort is made to ensure the information displayed is as accurate and current as possible, EBA will not be held responsible for any loss, damage or inconvenience caused as a result of reliance on such information or data.



Legend

Vibration category

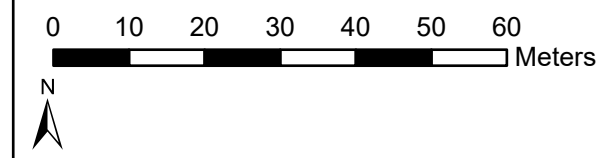
- 5 mm/s PPV Category B Vibration Criterion
- 20 mm/s PPV DIN 4150 Commercial Vibration Criterion

Vibration Classification

- Commercial
- Residential
- Works area

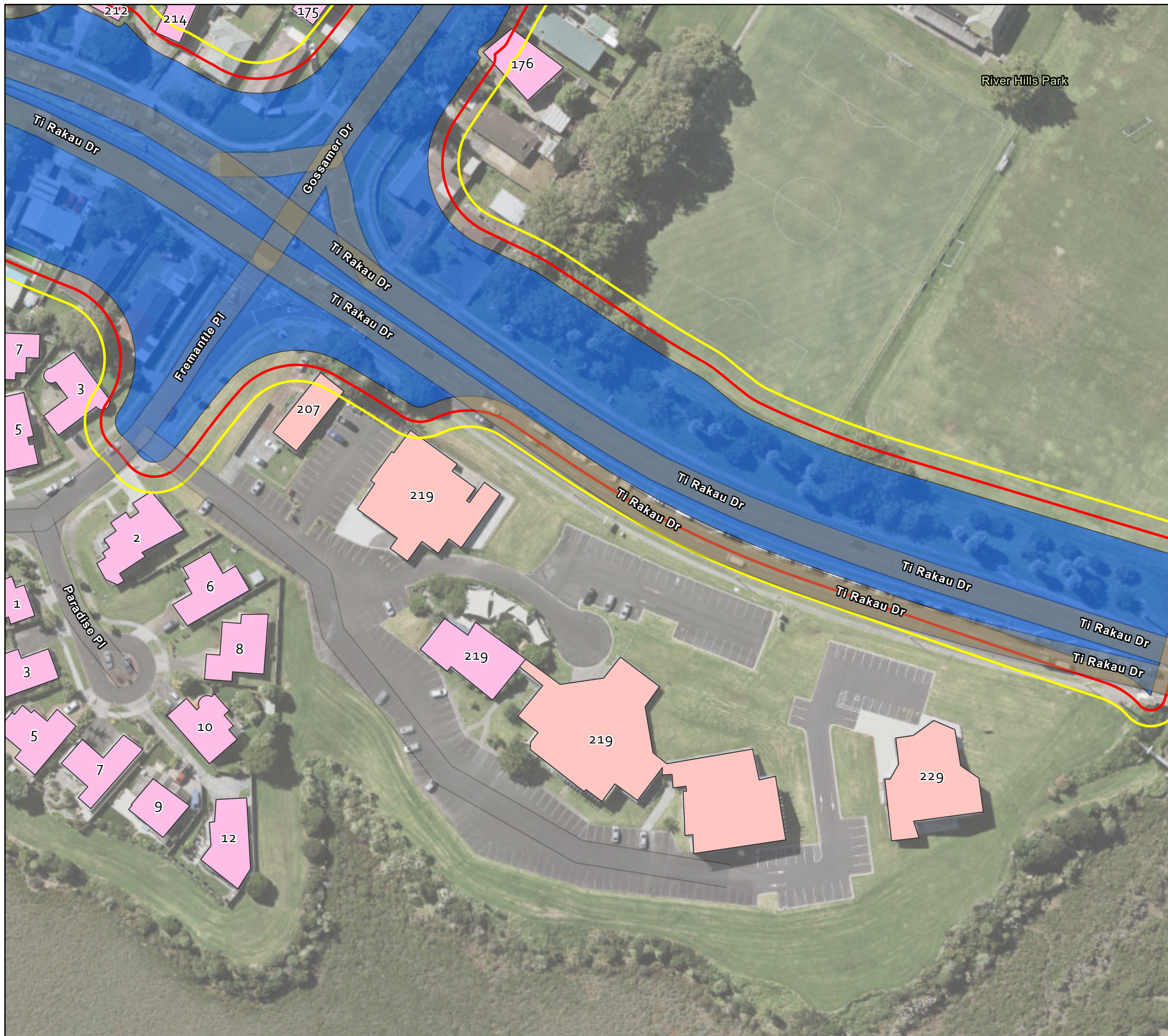
EB2EB3R Predicted Construction Vibration

Page 18 of 19



Map Creation Date: 6/30/2022
 Author:

This map is shown for reference purposes only. EBA provides this information "as is" with the understanding that it is not guaranteed to be accurate, correct or complete and conclusions drawn from such information are the responsibility of the user. While every effort is made to ensure the information displayed is as accurate and current as possible, EBA will not be held responsible for any loss, damage or inconvenience caused as a result of reliance on such information or data.



Legend

Vibration category

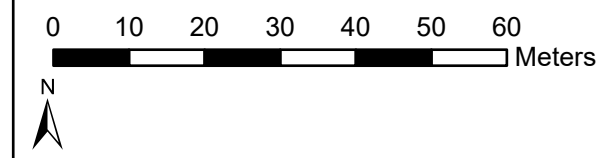
- 5 mm/s PPV Category B Vibration Criterion
- 20 mm/s PPV DIN 4150 Commercial Vibration Criterion

Vibration Classification

- Commercial
- Residential
- Works area

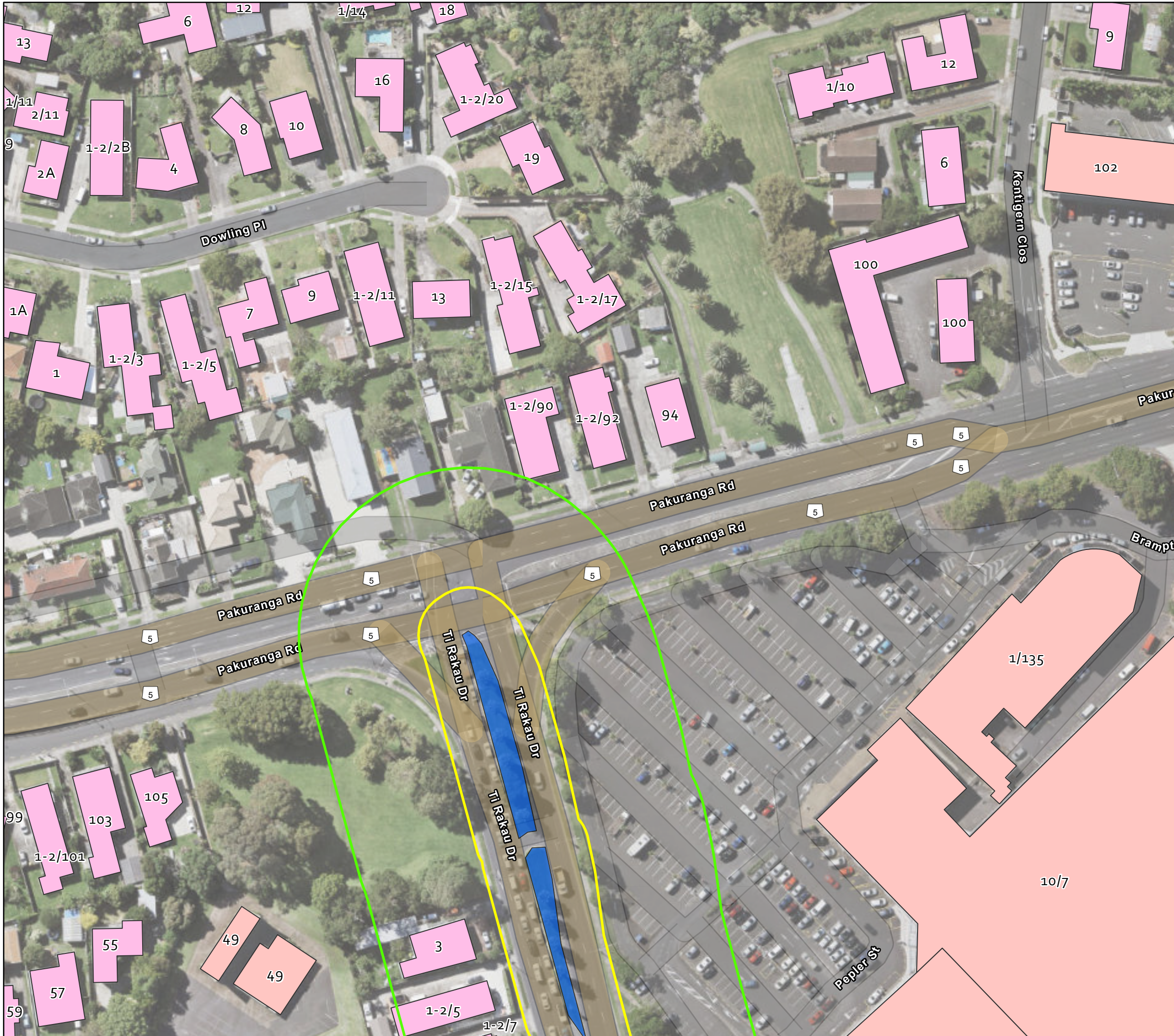
EB2EB3R Predicted Construction Vibration

Page 19 of 19



Map Creation Date: 6/30/2022
 Author:

This map is shown for reference purposes only. EBA provides this information "as is" with the understanding that it is not guaranteed to be accurate, correct or complete and conclusions drawn from such information are the responsibility of the user. While every effort is made to ensure the information displayed is as accurate and current as possible, EBA will not be held responsible for any loss, damage or inconvenience caused as a result of reliance on such information or data.



Legend

Vibration Category

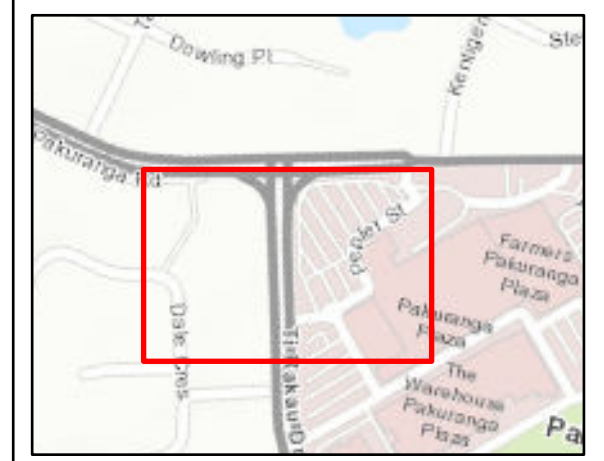
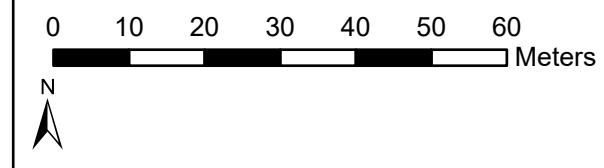
- 2 mm/s PPV Category B Vibration Criterion
- 0.3 mm/s PPV Category A Vibration Criterion

Vibration Use

- Commercial
- Residential
- Works Area

Night-Time Pavement Works Predicted Construction Vibration

Page 1 of 5



Service Layer Credits: Hybrid Reference Layer: Esri Community Maps Contributors, LINZ, Stats NZ, Eagle Technology, Esri, HERE, Garmin, METI/NASA, USGS
 newzealand: Eagle Technology, Land Information New Zealand, GEBCO, Community maps contributors

Map Creation Date: 6/30/2022
 Author:

This map is shown for reference purposes only. EBA provides this information "as is" with the understanding that it is not guaranteed to be accurate, correct or complete and conclusions drawn from such information are the responsibility of the user. While every effort is made to ensure the information displayed is as accurate and current as possible, EBA will not be held responsible for any loss, damage or inconvenience caused as a result of reliance on such information or data.

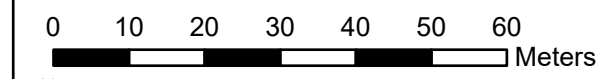


Legend
Vibration Category
 2 mm/s PPV Category B Vibration Criterion
 0.3 mm/s PPV Category A Vibration Criterion

Vibration Use
 Commercial
 Residential
 Works Area

**Night-Time Pavement Works
 Predicted
 Construction Vibration**

Page 2 of 5



Service Layer Credits: Hybrid Reference Layer: Esri Community Maps Contributors, LINZ, Stats NZ, Eagle Technology, Esri, HERE, Garmin, METI/NASA, USGS newzealand: Eagle Technology, Land Information New Zealand, GEBCO, Community maps contributors

Map Creation Date: 6/30/2022
 Author:

This map is shown for reference purposes only. EBA provides this information "as is" with the understanding that it is not guaranteed to be accurate, correct or complete and conclusions drawn from such information are the responsibility of the user. While every effort is made to ensure the information displayed is as accurate and current as possible, EBA will not be held responsible for any loss, damage or inconvenience caused as a result of reliance on such information or data.

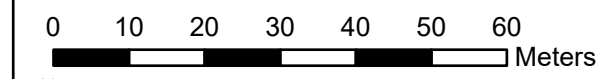


Legend
Vibration Category
 2 mm/s PPV Category B Vibration Criterion
 0.3 mm/s PPV Category A Vibration Criterion

Vibration Use
 Commercial
 Residential
 Works Area

**Night-Time Pavement Works
 Predicted
 Construction Vibration**

Page 3 of 5



Service Layer Credits: Hybrid Reference Layer: Esri Community Maps Contributors, LINZ, Stats NZ, Eagle Technology, Esri, HERE, Garmin, METI/NASA, USGS newzealand: Eagle Technology, Land Information New Zealand, GEBCO, Community maps contributors

Map Creation Date: 6/30/2022
 Author:

This map is shown for reference purposes only. EBA provides this information "as is" with the understanding that it is not guaranteed to be accurate, correct or complete and conclusions drawn from such information are the responsibility of the user. While every effort is made to ensure the information displayed is as accurate and current as possible, EBA will not be held responsible for any loss, damage or inconvenience caused as a result of reliance on such information or data.



Legend

Vibration Category

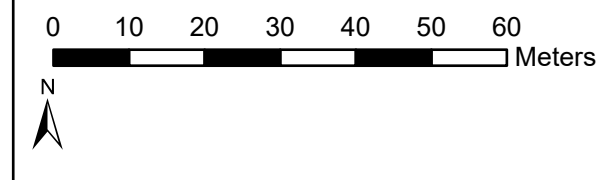
- 2 mm/s PPV Category B Vibration Criterion
- 0.3 mm/s PPV Category A Vibration Criterion

Vibration Use

- Commercial
- Residential
- Works Area

**Night-Time Pavement Works
Predicted
Construction Vibration**

Page 5 of 5



Service Layer Credits: Hybrid Reference Layer: Esri Community Maps Contributors, LINZ, Stats NZ, Eagle Technology, Esri, HERE, Garmin, METI/NASA, USGS newzealand: Eagle Technology, Land Information New Zealand, GEBCO, Community maps contributors

Map Creation Date: 6/30/2022
Author:

This map is shown for reference purposes only. EBA provides this information "as is" with the understanding that it is not guaranteed to be accurate, correct or complete and conclusions drawn from such information are the responsibility of the user. While every effort is made to ensure the information displayed is as accurate and current as possible, EBA will not be held responsible for any loss, damage or inconvenience caused as a result of reliance on such information or data.