

Appendix E – Noise Contour Maps



Legend

- Assessment Area
- Road Centrelines
- PPF Footprints**
- Existing**
- 64 dB < L_{Aeq}(24h)
- 64 dB ≤ L_{Aeq}(24h) < 67 dB
- Other Buildings
- Noise Level, dB L_{Aeq}**
- 55 dB ≤ L_{Aeq}(24h) < 60 dB
- 60 dB ≤ L_{Aeq}(24h) < 65 dB
- 65 dB ≤ L_{Aeq}(24h) < 70 dB
- L_{Aeq}(24h) ≥ 70 dB

**EB2/EB3R Noise Contour Map
Road Traffic Noise
Existing Scenario**

Page 1 of 19



Service Layer Credits: Hybrid Reference Layer: Esri, Community Maps Contributors, LINZ, Stats NZ, Eagle Technology, Esri, HERE, Garmin, METI/NASA, USGS
newzealand: Eagle Technology, Land Information New Zealand, GEBCO, Community map contributors

Map Creation Date: 30/06/2022
Author: Shivam Jakhu

This map is shown for reference purposes only. EBA provides this information "as is" with the understanding that it is not guaranteed to be accurate, correct or complete and conclusions drawn from such information are the responsibility of the user. While every effort is made to ensure the information displayed is as accurate and current as possible, EBA will not be held responsible for any loss, damage or inconvenience caused as a result of reliance on such information or data.



Legend

- Assessment Area
- Road Centrelines

PPF Footprints

Existing

- 64 dB < LAeq(24h)
- 64 dB ≤ LAeq(24h) < 67 dB
- Other Buildings

Noise Level, dB LAeq

- 55 dB ≤ LAeq(24h) < 60 dB
- 60 dB ≤ LAeq(24h) < 65 dB
- 65 dB ≤ LAeq(24h) < 70 dB
- LAeq(24h) ≥ 70 dB

EB2/EB3R Noise Contour Map
Road Traffic Noise
Existing Scenario

Page 2 of 19



Map Creation Date: 30/06/2022
 Author: Shivam Jakhu

This map is shown for reference purposes only. EBA provides this information "as is" with the understanding that it is not guaranteed to be accurate, correct or complete and conclusions drawn from such information are the responsibility of the user. While every effort is made to ensure the information displayed is as accurate and current as possible, EBA will not be held responsible for any loss, damage or inconvenience caused as a result of reliance on such information or data.



Legend

- Assessment Area
- Road Centrelines

PPF Footprints

Existing

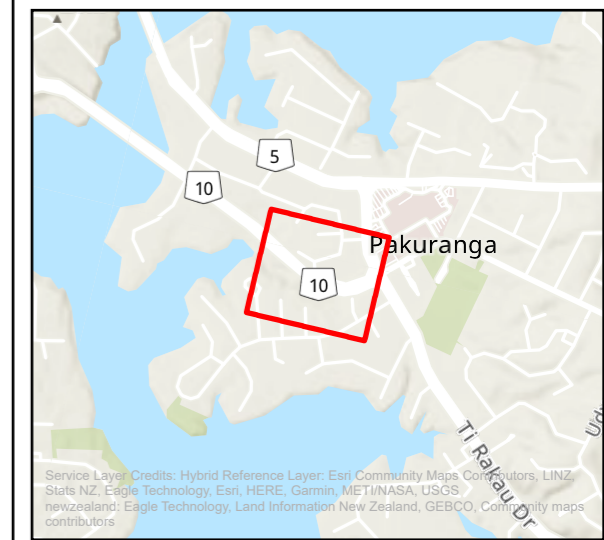
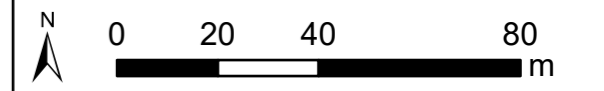
- $64 \text{ dB} < \text{LAeq}(24\text{h})$
- $64 \text{ dB} \leq \text{LAeq}(24\text{h}) < 67 \text{ dB}$
- $\text{LAeq}(24\text{h}) \geq 67 \text{ dB}$
- Other Buildings

Noise Level, dB L_{Aeq}

- $55 \text{ dB} \leq \text{LAeq}(24\text{h}) < 60 \text{ dB}$
- $60 \text{ dB} \leq \text{LAeq}(24\text{h}) < 65 \text{ dB}$
- $65 \text{ dB} \leq \text{LAeq}(24\text{h}) < 70 \text{ dB}$
- $\text{LAeq}(24\text{h}) \geq 70 \text{ dB}$

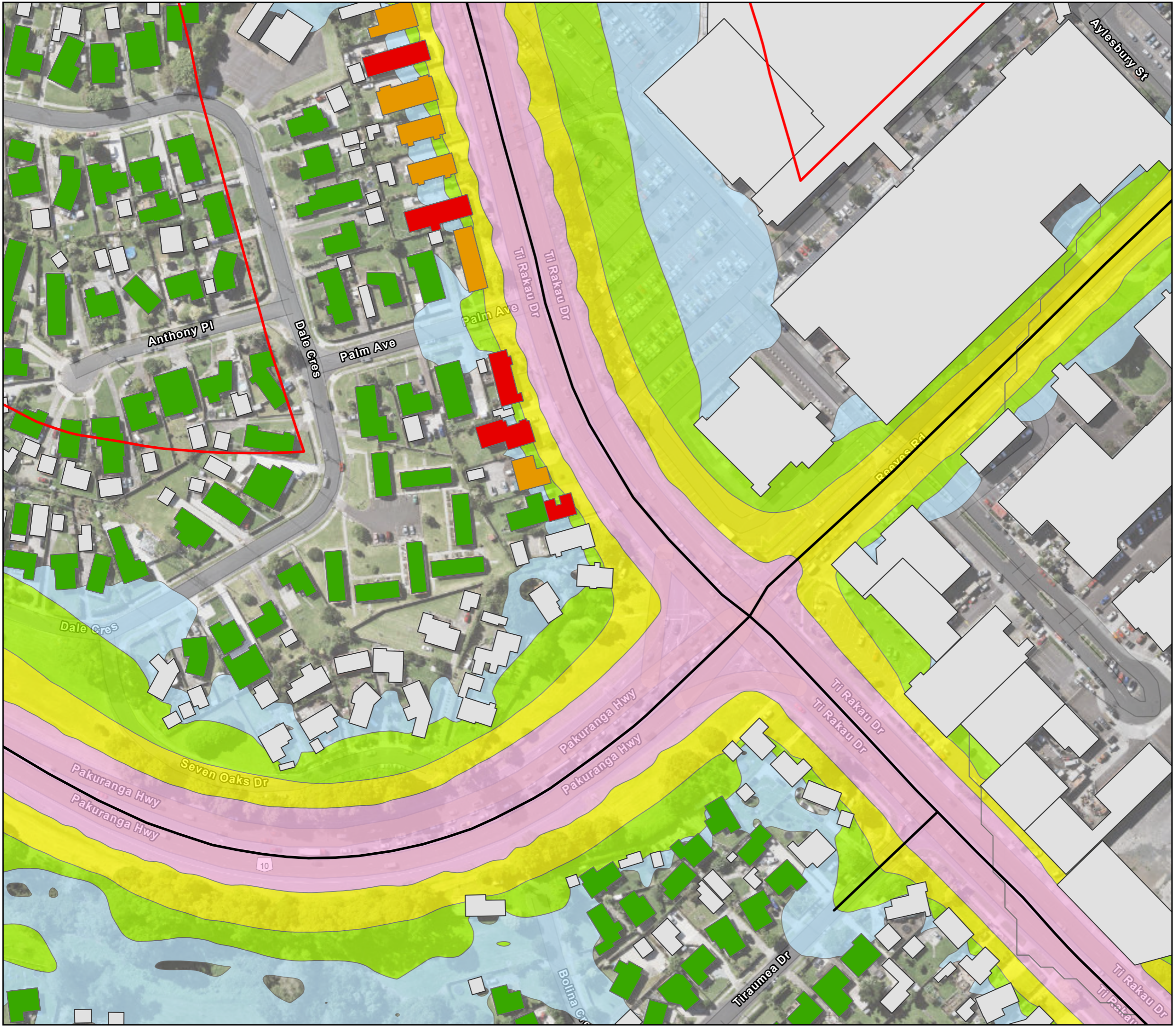
EB2/EB3R Noise Contour Map
Road Traffic Noise
Existing Scenario

Page 3 of 19



Map Creation Date: 30/06/2022
 Author: Shivam Jakhu

This map is shown for reference purposes only. EBA provides this information "as is" with the understanding that it is not guaranteed to be accurate, correct or complete and conclusions drawn from such information are the responsibility of the user. While every effort is made to ensure the information displayed is as accurate and current as possible, EBA will not be held responsible for any loss, damage or inconvenience caused as a result of reliance on such information or data.

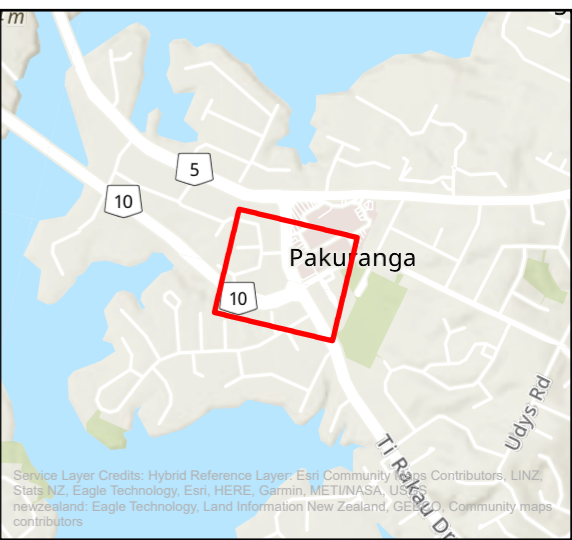
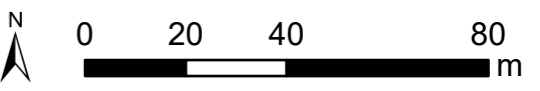


Legend

- Assessment Area
 - Road Centrelines
- PPF Footprints**
- Existing**
- 64 dB < LAeq(24h)
 - 64 dB ≤ LAeq(24h) < 67 dB
 - LAeq(24h) ≥ 67 dB
 - Other Buildings
- Noise Level, dB LAeq**
- 55 dB ≤ LAeq(24h) < 60 dB
 - 60 dB ≤ LAeq(24h) < 65 dB
 - 65 dB ≤ LAeq(24h) < 70 dB
 - LAeq(24h) ≥ 70 dB

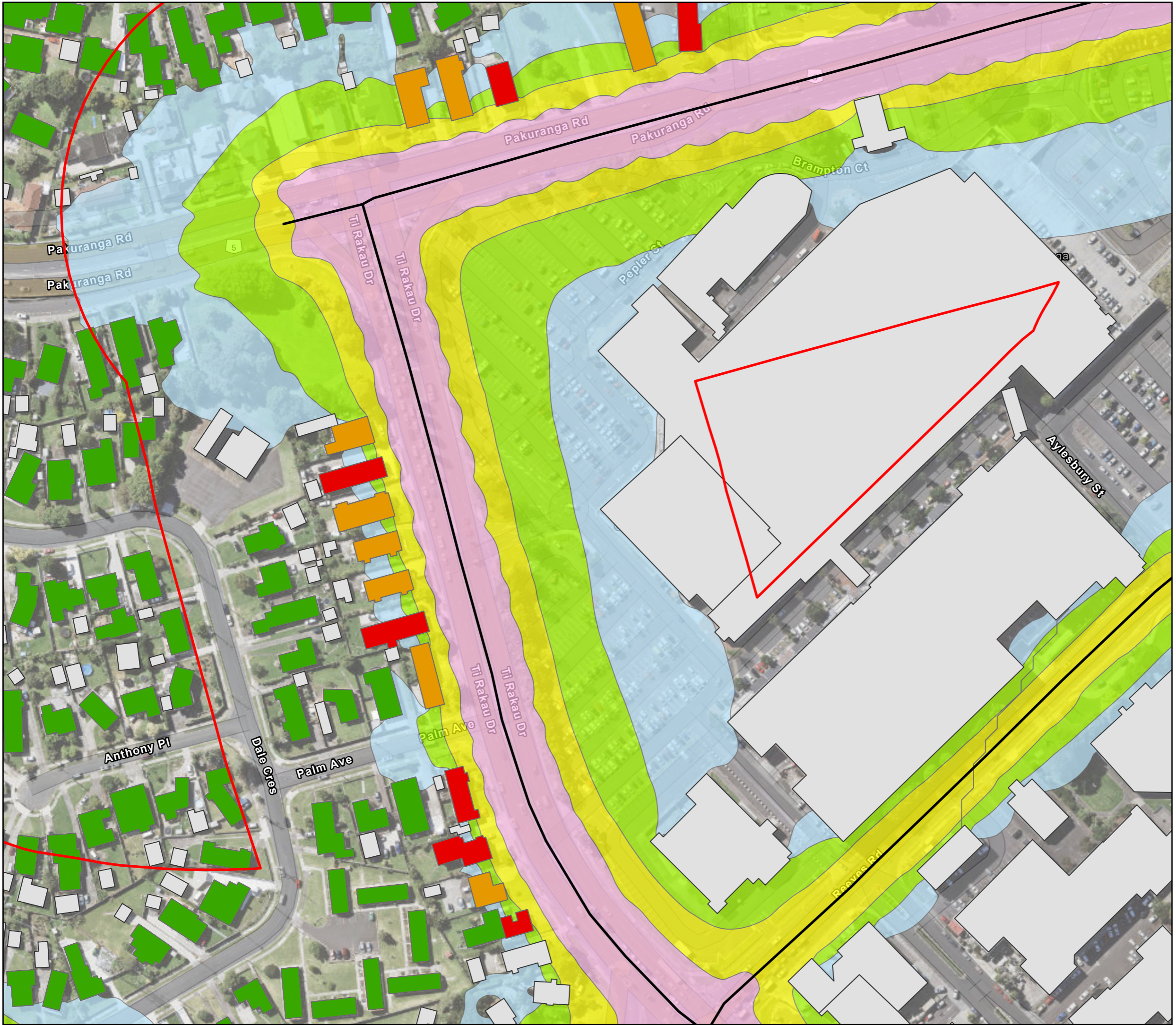
**EB2/EB3R Noise Contour Map
Road Traffic Noise
Existing Scenario**

Page 4 of 19



Map Creation Date: 30/06/2022
Author: Shivam Jakhu

This map is shown for reference purposes only. EBA provides this information "as is" with the understanding that it is not guaranteed to be accurate, correct or complete and conclusions drawn from such information are the responsibility of the user. While every effort is made to ensure the information displayed is as accurate and current as possible, EBA will not be held responsible for any loss, damage or inconvenience caused as a result of reliance on such information or data.



Legend

- Assessment Area
- Road Centrelines

PPF Footprints

Existing

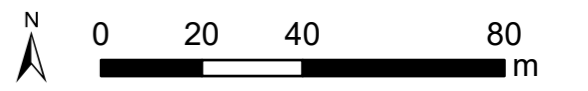
- 64 dB < LAeq(24h)
- 64 dB ≤ LAeq(24h) < 67 dB
- LAeq(24h) ≥ 67 dB
- Other Buildings

Noise Level, dB LAeq

- 55 dB ≤ LAeq(24h) < 60 dB
- 60 dB ≤ LAeq(24h) < 65 dB
- 65 dB ≤ LAeq(24h) < 70 dB
- LAeq(24h) ≥ 70 dB

EB2/EB3R Noise Contour Map
Road Traffic Noise
Existing Scenario

Page 5 of 19



Map Creation Date: 30/06/2022
 Author: Shivam Jakhu

This map is shown for reference purposes only. EBA provides this information "as is" with the understanding that it is not guaranteed to be accurate, correct or complete and conclusions drawn from such information are the responsibility of the user. While every effort is made to ensure the information displayed is as accurate and current as possible, EBA will not be held responsible for any loss, damage or inconvenience caused as a result of reliance on such information or data.



Legend

- Assessment Area
- Road Centrelines

PPF Footprints

Existing

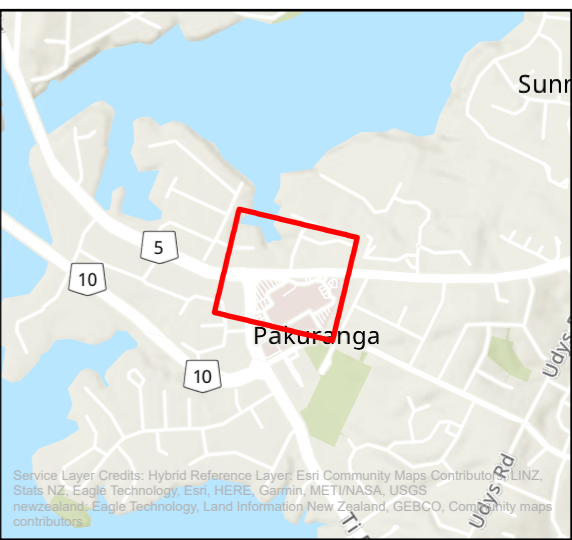
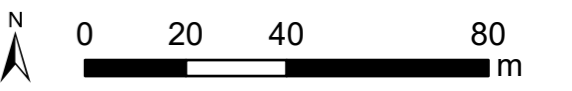
- 64 dB < LAeq(24h)
- 64 dB ≤ LAeq(24h) < 67 dB
- LAeq(24h) ≥ 67 dB
- Other Buildings

Noise Level, dB LAeq

- 55 dB ≤ LAeq(24h) < 60 dB
- 60 dB ≤ LAeq(24h) < 65 dB
- 65 dB ≤ LAeq(24h) < 70 dB
- LAeq(24h) ≥ 70 dB

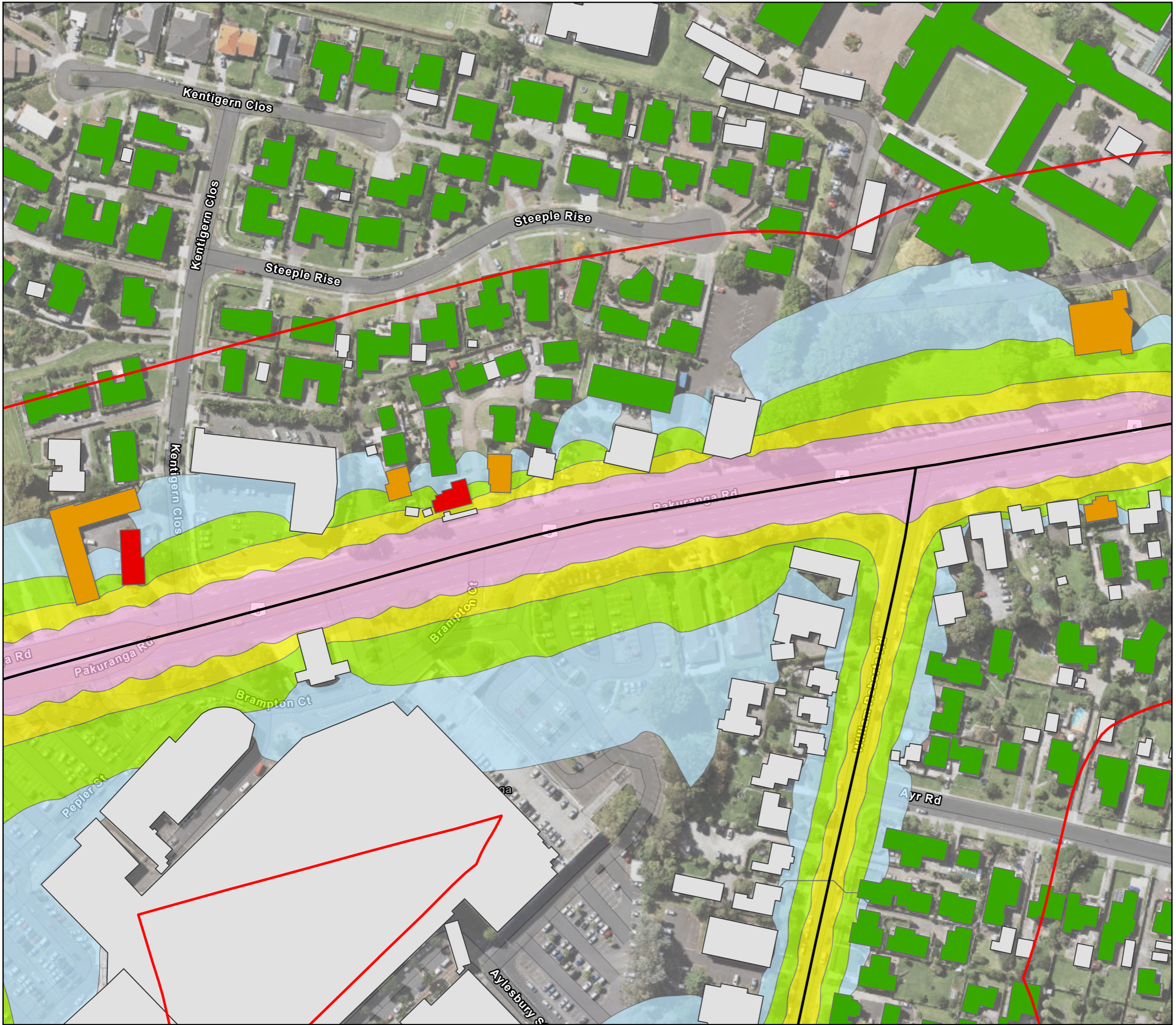
EB2/EB3R Noise Contour Map
Road Traffic Noise
Existing Scenario

Page 6 of 19



Map Creation Date: 30/06/2022
 Author: Shivam Jakhu

This map is shown for reference purposes only. EBA provides this information "as is" with the understanding that it is not guaranteed to be accurate, correct or complete and conclusions drawn from such information are the responsibility of the user. While every effort is made to ensure the information displayed is as accurate and current as possible, EBA will not be held responsible for any loss, damage or inconvenience caused as a result of reliance on such information or data.



Legend

- Assessment Area
- Road Centrelines

PPF Footprints

Existing

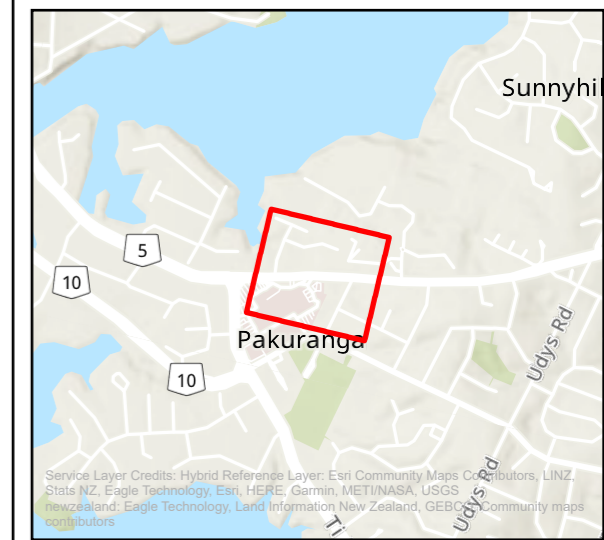
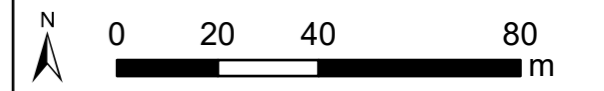
- $64 \text{ dB} < \text{LAeq}(24\text{h})$
- $64 \text{ dB} \leq \text{LAeq}(24\text{h}) < 67 \text{ dB}$
- $\text{LAeq}(24\text{h}) \geq 67 \text{ dB}$
- Other Buildings

Noise Level, dB L_{Aeq}

- $55 \text{ dB} \leq \text{LAeq}(24\text{h}) < 60 \text{ dB}$
- $60 \text{ dB} \leq \text{LAeq}(24\text{h}) < 65 \text{ dB}$
- $65 \text{ dB} \leq \text{LAeq}(24\text{h}) < 70 \text{ dB}$
- $\text{LAeq}(24\text{h}) \geq 70 \text{ dB}$

**EB2/EB3R Noise Contour Map
Road Traffic Noise
Existing Scenario**

Page 7 of 19



Map Creation Date: 30/06/2022
Author: Shivam Jakhu

This map is shown for reference purposes only. EBA provides this information "as is" with the understanding that it is not guaranteed to be accurate, correct or complete and conclusions drawn from such information are the responsibility of the user. While every effort is made to ensure the information displayed is as accurate and current as possible, EBA will not be held responsible for any loss, damage or inconvenience caused as a result of reliance on such information or data.



Legend

- Assessment Area
- Road Centrelines

PPF Footprints

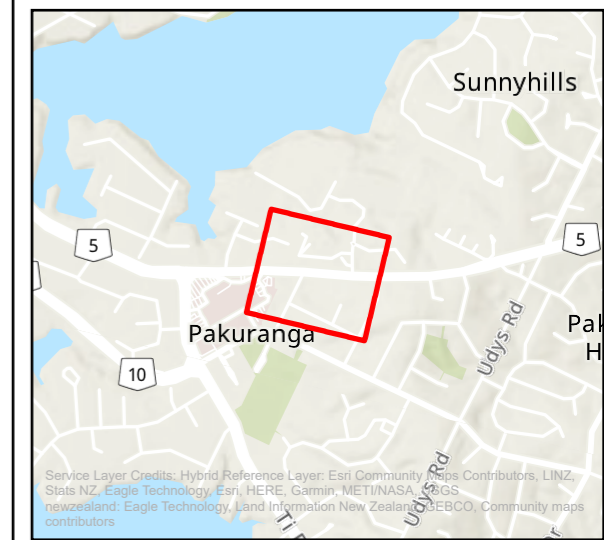
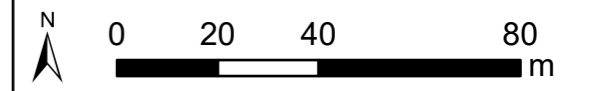
- Existing
- 64 dB <math>\leq L_{Aeq}(24h) < 67\text{ dB}</math>
- Other Buildings

Noise Level, dB L_{Aeq}

- 55 dB <math>\leq L_{Aeq}(24h) < 60\text{ dB}</math>
- 60 dB <math>\leq L_{Aeq}(24h) < 65\text{ dB}</math>
- 65 dB <math>\leq L_{Aeq}(24h) < 70\text{ dB}</math>
- $L_{Aeq}(24h) \geq 70\text{ dB}$

EB2/EB3R Noise Contour Map
Road Traffic Noise
Existing Scenario

Page 8 of 19



Map Creation Date: 30/06/2022
 Author: Shivam Jakhu

This map is shown for reference purposes only. EBA provides this information "as is" with the understanding that it is not guaranteed to be accurate, correct or complete and conclusions drawn from such information are the responsibility of the user. While every effort is made to ensure the information displayed is as accurate and current as possible, EBA will not be held responsible for any loss, damage or inconvenience caused as a result of reliance on such information or data.



Legend

- Assessment Area
- Road Centrelines

PPF Footprints

Existing

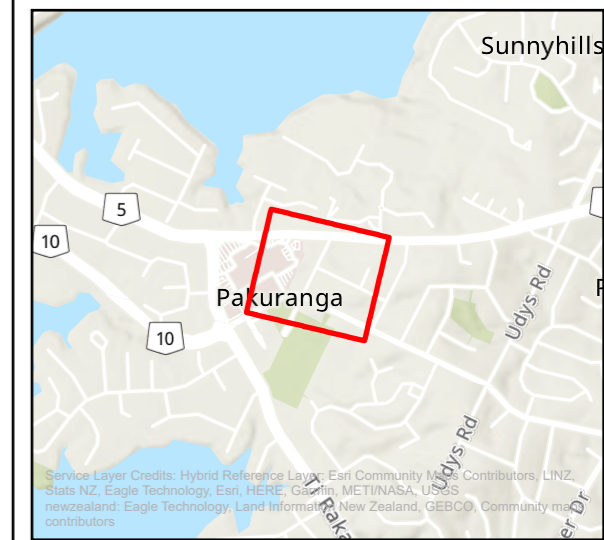
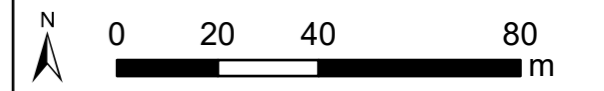
- 64 dB < LAeq(24h)
- 64 dB ≤ LAeq(24h) < 67 dB
- LAeq(24h) ≥ 67 dB
- Other Buildings

Noise Level, dB LAeq

- 55 dB ≤ LAeq(24h) < 60 dB
- 60 dB ≤ LAeq(24h) < 65 dB
- 65 dB ≤ LAeq(24h) < 70 dB
- LAeq(24h) ≥ 70 dB

EB2/EB3R Noise Contour Map
Road Traffic Noise
Existing Scenario

Page 9 of 19



Map Creation Date: 30/06/2022
 Author: Shivam Jakhu

This map is shown for reference purposes only. EBA provides this information "as is" with the understanding that it is not guaranteed to be accurate, correct or complete and conclusions drawn from such information are the responsibility of the user. While every effort is made to ensure the information displayed is as accurate and current as possible, EBA will not be held responsible for any loss, damage or inconvenience caused as a result of reliance on such information or data.



Legend

- Assessment Area
- Road Centrelines

PPF Footprints

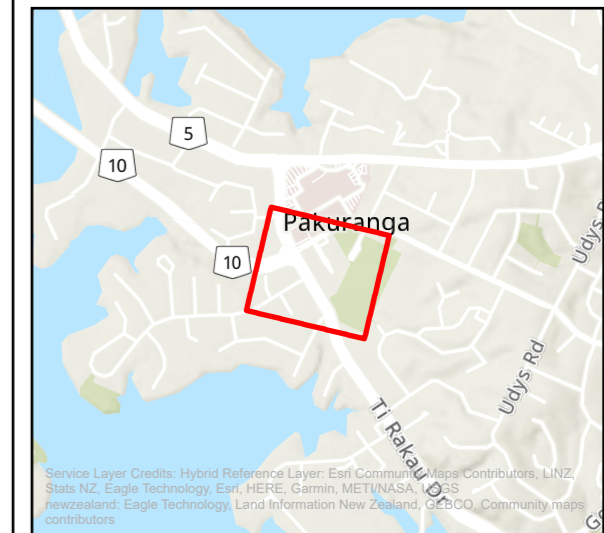
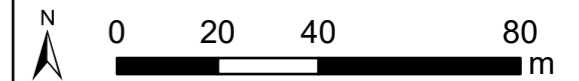
Existing

- $64 \text{ dB} < L_{Aeq}(24h)$
- $64 \text{ dB} \leq L_{Aeq}(24h) < 67 \text{ dB}$
- $L_{Aeq}(24h) \geq 67 \text{ dB}$
- Other Buildings

Noise Level, dB L_{Aeq}

- $55 \text{ dB} \leq L_{Aeq}(24h) < 60 \text{ dB}$
- $60 \text{ dB} \leq L_{Aeq}(24h) < 65 \text{ dB}$
- $65 \text{ dB} \leq L_{Aeq}(24h) < 70 \text{ dB}$
- $L_{Aeq}(24h) \geq 70 \text{ dB}$

**EB2/EB3R Noise Contour Map
Road Traffic Noise
Existing Scenario**



Service Layer Credits: Hybrid Reference Layer: Esri Community Maps Contributors, LINZ, Stats NZ, Eagle Technology, Esri, HERE, Garmin, METI/NASA, USGS newzealand; Eagle Technology, Land Information New Zealand, GCBDO, Community maps contributors

Map Creation Date: 30/06/2022
Author: Shivam Jakhu

This map is shown for reference purposes only. EBA provides this information "as is" with the understanding that it is not guaranteed to be accurate, correct or complete and conclusions drawn from such information are the responsibility of the user. While every effort is made to ensure the information displayed is as accurate and current as possible, EBA will not be held responsible for any loss, damage or inconvenience caused as a result of reliance on such information or data.



Legend

- Assessment Area
- Road Centrelines

PPF Footprints

Existing

- 64 dB < LAeq(24h)
- 64 dB ≤ LAeq(24h) < 67 dB
- LAeq(24h) ≥ 67 dB
- Other Buildings

Noise Level, dB LAeq

- 55 dB ≤ LAeq(24h) < 60 dB
- 60 dB ≤ LAeq(24h) < 65 dB
- 65 dB ≤ LAeq(24h) < 70 dB
- LAeq(24h) ≥ 70 dB

**EB2/EB3R Noise Contour Map
Road Traffic Noise
Existing Scenario**

Page 12 of 19



Service Layer Credits: Hybrid Reference Layer: Esri Community Maps Contributors, LINZ Stats NZ, Eagle Technology, Esri, HERE, Garmin, METI/NASA, USGS newzealand: Eagle Technology, Land Information New Zealand, GEBCO, Community maps contributors

Map Creation Date: 30/06/2022
Author: Shivam Jakhu

This map is shown for reference purposes only. EBA provides this information "as is" with the understanding that it is not guaranteed to be accurate, correct or complete and conclusions drawn from such information are the responsibility of the user. While every effort is made to ensure the information displayed is as accurate and current as possible, EBA will not be held responsible for any loss, damage or inconvenience caused as a result of reliance on such information or data.



Legend

- Assessment Area
- Road Centrelines

PPF Footprints

Existing

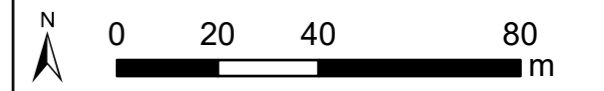
- $64 \text{ dB} < \text{LAeq}(24\text{h})$
- $64 \text{ dB} \leq \text{LAeq}(24\text{h}) < 67 \text{ dB}$
- $\text{LAeq}(24\text{h}) \geq 67 \text{ dB}$
- Other Buildings

Noise Level, dB L_{Aeq}

- $55 \text{ dB} \leq \text{LAeq}(24\text{h}) < 60 \text{ dB}$
- $60 \text{ dB} \leq \text{LAeq}(24\text{h}) < 65 \text{ dB}$
- $65 \text{ dB} \leq \text{LAeq}(24\text{h}) < 70 \text{ dB}$
- $\text{LAeq}(24\text{h}) \geq 70 \text{ dB}$

EB2/EB3R Noise Contour Map
Road Traffic Noise
Existing Scenario

Page 13 of 19



Map Creation Date: 30/06/2022
 Author: Shivam Jakhu

This map is shown for reference purposes only. EBA provides this information "as is" with the understanding that it is not guaranteed to be accurate, correct or complete and conclusions drawn from such information are the responsibility of the user. While every effort is made to ensure the information displayed is as accurate and current as possible, EBA will not be held responsible for any loss, damage or inconvenience caused as a result of reliance on such information or data.



Legend

- Assessment Area
- Road Centrelines

PPF Footprints

Existing

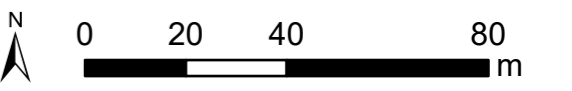
- 64 dB < LAeq(24h)
- 64 dB ≤ LAeq(24h) < 67 dB
- LAeq(24h) ≥ 67 dB
- Other Buildings

Noise Level, dB LAeq

- 55 dB ≤ LAeq(24h) < 60 dB
- 60 dB ≤ LAeq(24h) < 65 dB
- 65 dB ≤ LAeq(24h) < 70 dB
- LAeq(24h) ≥ 70 dB

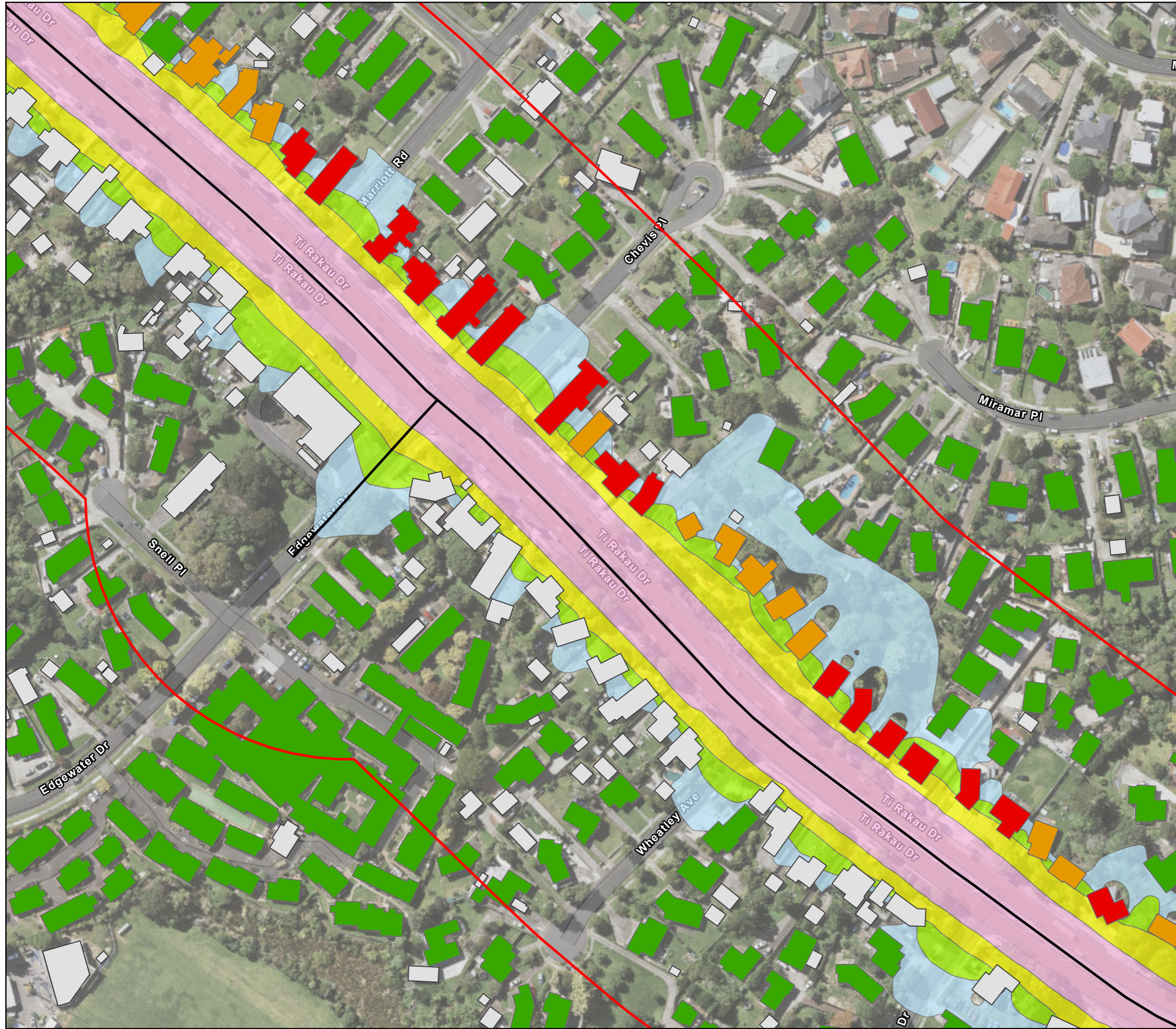
**EB2/EB3R Noise Contour Map
Road Traffic Noise
Existing Scenario**

Page 14 of 19



Map Creation Date: 30/06/2022
Author: Shivam Jakhu

This map is shown for reference purposes only. EBA provides this information "as is" with the understanding that it is not guaranteed to be accurate, correct or complete and conclusions drawn from such information are the responsibility of the user. While every effort is made to ensure the information displayed is as accurate and current as possible, EBA will not be held responsible for any loss, damage or inconvenience caused as a result of reliance on such information or data.



Legend

- Assessment Area
- Road Centrelines

PPF Footprints

Existing

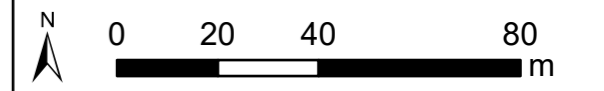
- $64 \text{ dB} < \text{LAeq}(24\text{h})$
- $64 \text{ dB} \leq \text{LAeq}(24\text{h}) < 67 \text{ dB}$
- $\text{LAeq}(24\text{h}) \geq 67 \text{ dB}$
- Other Buildings

Noise Level, dB L_{Aeq}

- $55 \text{ dB} \leq \text{LAeq}(24\text{h}) < 60 \text{ dB}$
- $60 \text{ dB} \leq \text{LAeq}(24\text{h}) < 65 \text{ dB}$
- $65 \text{ dB} \leq \text{LAeq}(24\text{h}) < 70 \text{ dB}$
- $\text{LAeq}(24\text{h}) \geq 70 \text{ dB}$

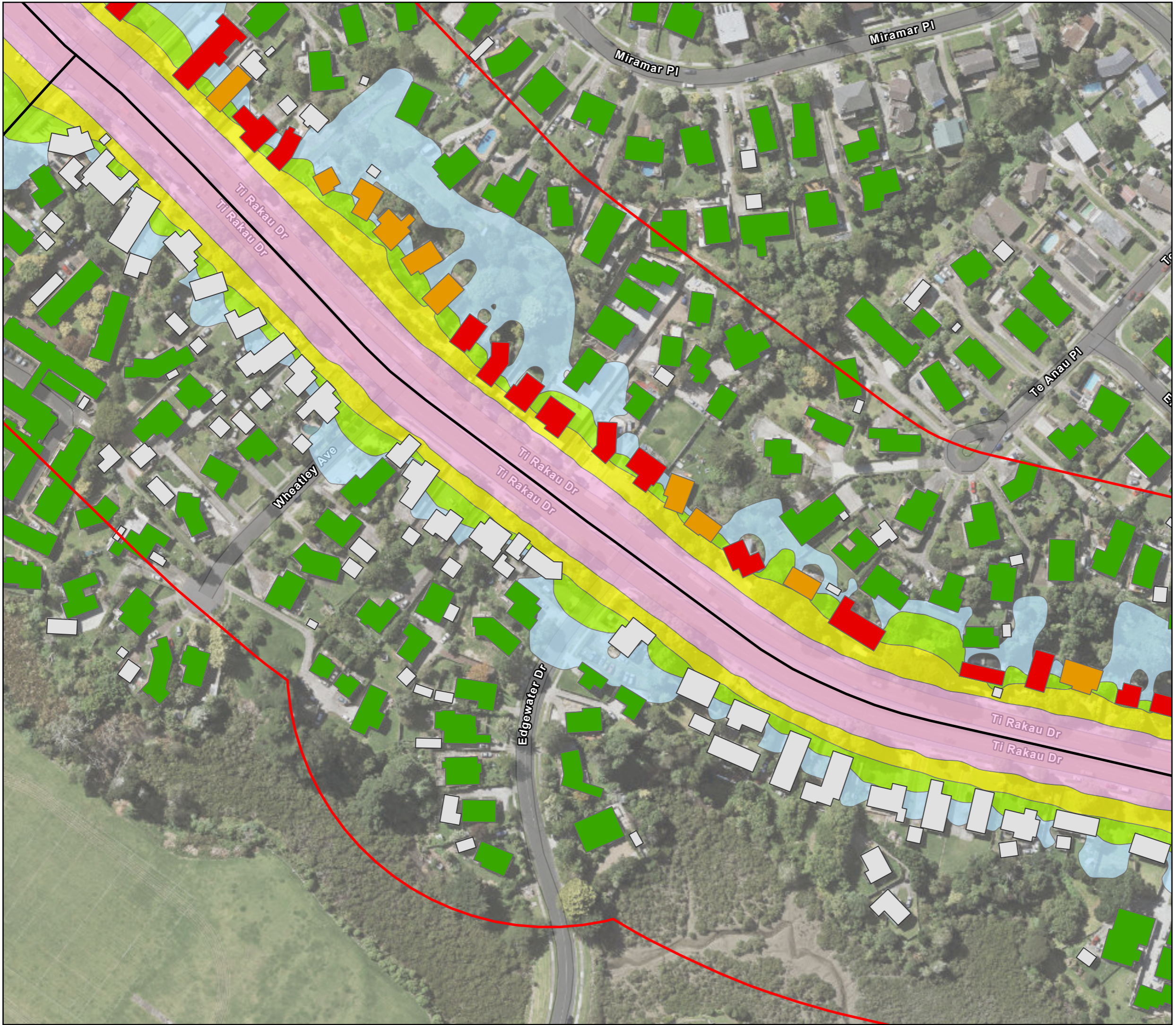
EB2/EB3R Noise Contour Map
Road Traffic Noise
Existing Scenario

Page 15 of 19



Map Creation Date: 30/06/2022
 Author: Shivam Jakhu

This map is shown for reference purposes only. EBA provides this information "as is" with the understanding that it is not guaranteed to be accurate, correct or complete and conclusions drawn from such information are the responsibility of the user. While every effort is made to ensure the information displayed is as accurate and current as possible, EBA will not be held responsible for any loss, damage or inconvenience caused as a result of reliance on such information or data.



Legend

- Assessment Area
- Road Centrelines

PPF Footprints

Existing

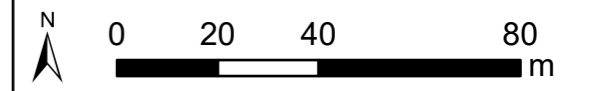
- 64 dB < LAeq(24h)
- 64 dB ≤ LAeq(24h) < 67 dB
- LAeq(24h) ≥ 67 dB
- Other Buildings

Noise Level, dB L_{Aeq}

- 55 dB ≤ LAeq(24h) < 60 dB
- 60 dB ≤ LAeq(24h) < 65 dB
- 65 dB ≤ LAeq(24h) < 70 dB
- LAeq(24h) ≥ 70 dB

EB2/EB3R Noise Contour Map
Road Traffic Noise
Existing Scenario

Page 16 of 19



Map Creation Date: 30/06/2022
 Author: Shivam Jakhu

This map is shown for reference purposes only. EBA provides this information "as is" with the understanding that it is not guaranteed to be accurate, correct or complete and conclusions drawn from such information are the responsibility of the user. While every effort is made to ensure the information displayed is as accurate and current as possible, EBA will not be held responsible for any loss, damage or inconvenience caused as a result of reliance on such information or data.



Legend

- Assessment Area
- Road Centrelines

PPF Footprints

Existing

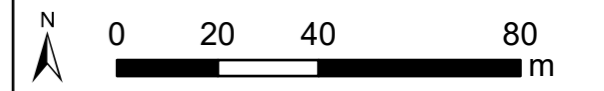
- 64 dB < L_{Aeq}(24h)
- 64 dB ≤ L_{Aeq}(24h) < 67 dB
- L_{Aeq}(24h) ≥ 67 dB
- Other Buildings

Noise Level, dB L_{Aeq}

- 55 dB ≤ L_{Aeq}(24h) < 60 dB
- 60 dB ≤ L_{Aeq}(24h) < 65 dB
- 65 dB ≤ L_{Aeq}(24h) < 70 dB
- L_{Aeq}(24h) ≥ 70 dB

EB2/EB3R Noise Contour Map
Road Traffic Noise
Existing Scenario

Page 17 of 19



Map Creation Date: 30/06/2022
 Author: Shivam Jakhu

This map is shown for reference purposes only. EBA provides this information "as is" with the understanding that it is not guaranteed to be accurate, correct or complete and conclusions drawn from such information are the responsibility of the user. While every effort is made to ensure the information displayed is as accurate and current as possible, EBA will not be held responsible for any loss, damage or inconvenience caused as a result of reliance on such information or data.



Legend

- Assessment Area
- Road Centrelines

PPF Footprints

Existing

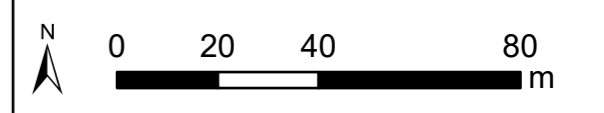
- $64 \text{ dB} < \text{LAeq}(24\text{h})$
- $64 \text{ dB} \leq \text{LAeq}(24\text{h}) < 67 \text{ dB}$
- $\text{LAeq}(24\text{h}) \geq 67 \text{ dB}$
- Other Buildings

Noise Level, dB L_{Aeq}

- $55 \text{ dB} \leq \text{LAeq}(24\text{h}) < 60 \text{ dB}$
- $60 \text{ dB} \leq \text{LAeq}(24\text{h}) < 65 \text{ dB}$
- $65 \text{ dB} \leq \text{LAeq}(24\text{h}) < 70 \text{ dB}$
- $\text{LAeq}(24\text{h}) \geq 70 \text{ dB}$

EB2/EB3R Noise Contour Map
Road Traffic Noise
Existing Scenario

Page 18 of 19



Map Creation Date: 30/06/2022
 Author: Shivam Jakhu

This map is shown for reference purposes only. EBA provides this information "as is" with the understanding that it is not guaranteed to be accurate, correct or complete and conclusions drawn from such information are the responsibility of the user. While every effort is made to ensure the information displayed is as accurate and current as possible, EBA will not be held responsible for any loss, damage or inconvenience caused as a result of reliance on such information or data.



Legend

- Assessment Area
- Road Centrelines

PPF Footprints

Existing

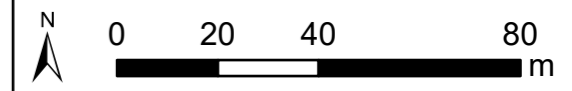
- 64 dB < LAeq(24h)
- 64 dB ≤ LAeq(24h) < 67 dB
- LAeq(24h) ≥ 67 dB
- Other Buildings

Noise Level, dB LAeq

- 55 dB ≤ LAeq(24h) < 60 dB
- 60 dB ≤ LAeq(24h) < 65 dB
- 65 dB ≤ LAeq(24h) < 70 dB
- LAeq(24h) ≥ 70 dB

**EB2/EB3R Noise Contour Map
Road Traffic Noise
Existing Scenario**

Page 19 of 19



Map Creation Date: 30/06/2022
Author: Shivam Jakhu

This map is shown for reference purposes only. EBA provides this information "as is" with the understanding that it is not guaranteed to be accurate, correct or complete and conclusions drawn from such information are the responsibility of the user. While every effort is made to ensure the information displayed is as accurate and current as possible, EBA will not be held responsible for any loss, damage or inconvenience caused as a result of reliance on such information or data.



Legend

- Assessment Area
- Road Centrelines
- PPF Footprints**
- DoNoth**
- 64 dB < LAeq(24h)
- 64 dB ≤ LAeq(24h) < 67 dB
- Other Buildings
- Noise Level, dB LAeq**
- 55 dB ≤ LAeq(24h) < 60 dB
- 60 dB ≤ LAeq(24h) < 65 dB
- 65 dB ≤ LAeq(24h) < 70 dB
- LAeq(24h) ≥ 70 dB

**EB2/EB3R Noise Contour Map
Road Traffic Noise
Do Nothing Scenario**

Page 1 of 19



Service Layer Credits: Hybrid Reference Layer: Esri, Community Maps Contributors, LINZ, Stats NZ, Eagle Technology, Esri, HERE, Garmin, METI/NASA, USGS, newzealand: Eagle Technology, Land Information New Zealand, GEBCO, Community maps contributors

Map Creation Date: 30/06/2022
Author: Shivam Jakhu

This map is shown for reference purposes only. EBA provides this information "as is" with the understanding that it is not guaranteed to be accurate, correct or complete and conclusions drawn from such information are the responsibility of the user. While every effort is made to ensure the information displayed is as accurate and current as possible, EBA will not be held responsible for any loss, damage or inconvenience caused as a result of reliance on such information or data.



Legend

- Assessment Area
- Road Centrelines

PPF Footprints

DoNotth

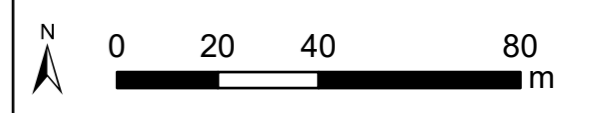
- 64 dB < LAeq(24h)
- 64 dB ≤ LAeq(24h) < 67 dB
- LAeq(24h) ≥ 67 dB
- Other Buildings

Noise Level, dB LAeq

- 55 dB ≤ LAeq(24h) < 60 dB
- 60 dB ≤ LAeq(24h) < 65 dB
- 65 dB ≤ LAeq(24h) < 70 dB
- LAeq(24h) ≥ 70 dB

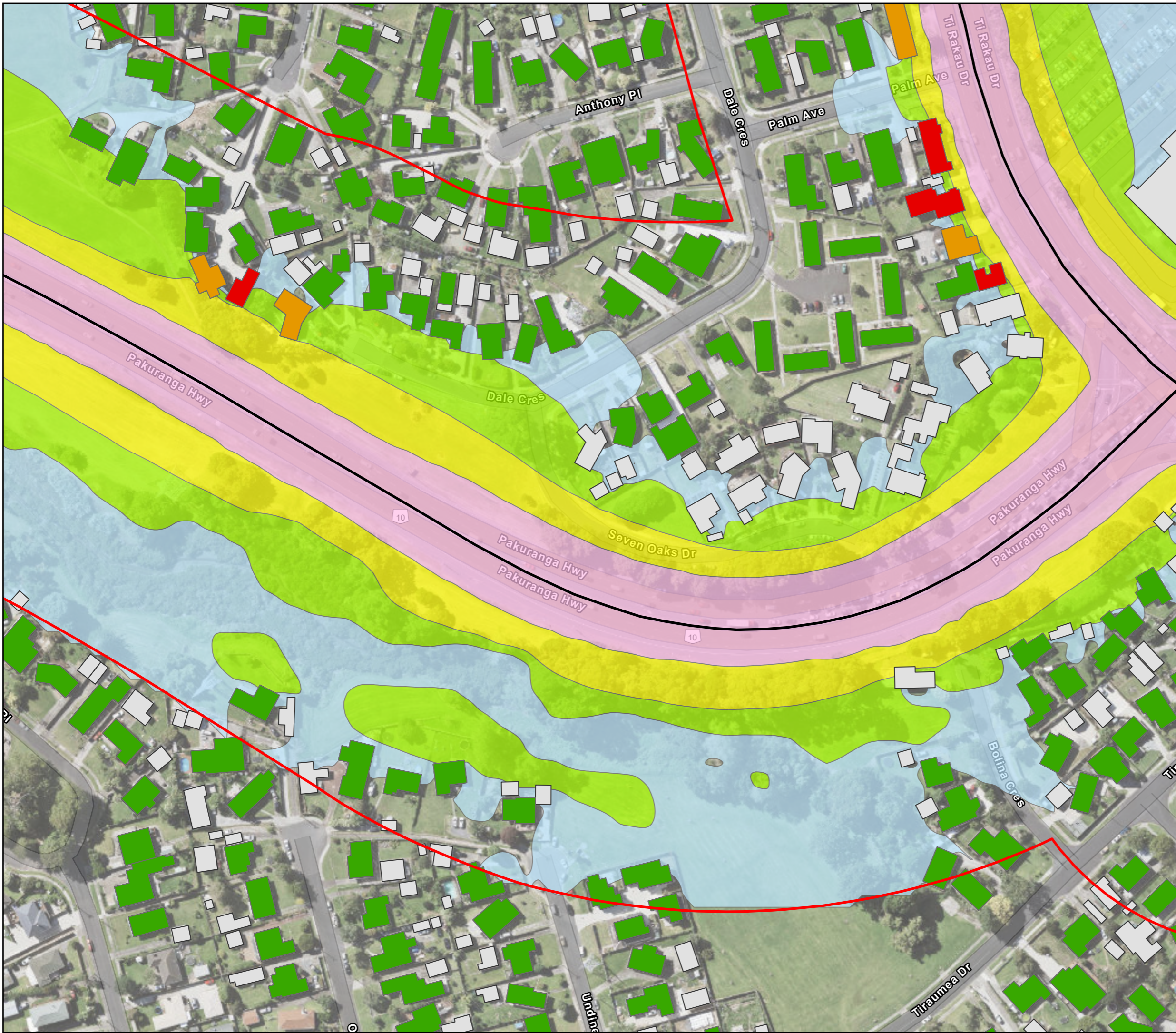
EB2/EB3R Noise Contour Map
Road Traffic Noise
Do Nothing Scenario

Page 2 of 19



Map Creation Date: 30/06/2022
 Author: Shivam Jakhu

This map is shown for reference purposes only. EBA provides this information "as is" with the understanding that it is not guaranteed to be accurate, correct or complete and conclusions drawn from such information are the responsibility of the user. While every effort is made to ensure the information displayed is as accurate and current as possible, EBA will not be held responsible for any loss, damage or inconvenience caused as a result of reliance on such information or data.



Legend

- Assessment Area
- Road Centrelines

PPF Footprints

DoNotth

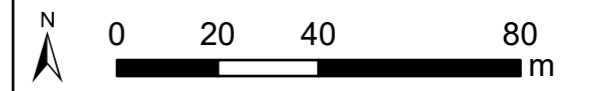
- 64 dB < LAeq(24h)
- 64 dB ≤ LAeq(24h) < 67 dB
- LAeq(24h) ≥ 67 dB
- Other Buildings

Noise Level, dB LAeq

- 55 dB ≤ LAeq(24h) < 60 dB
- 60 dB ≤ LAeq(24h) < 65 dB
- 65 dB ≤ LAeq(24h) < 70 dB
- LAeq(24h) ≥ 70 dB

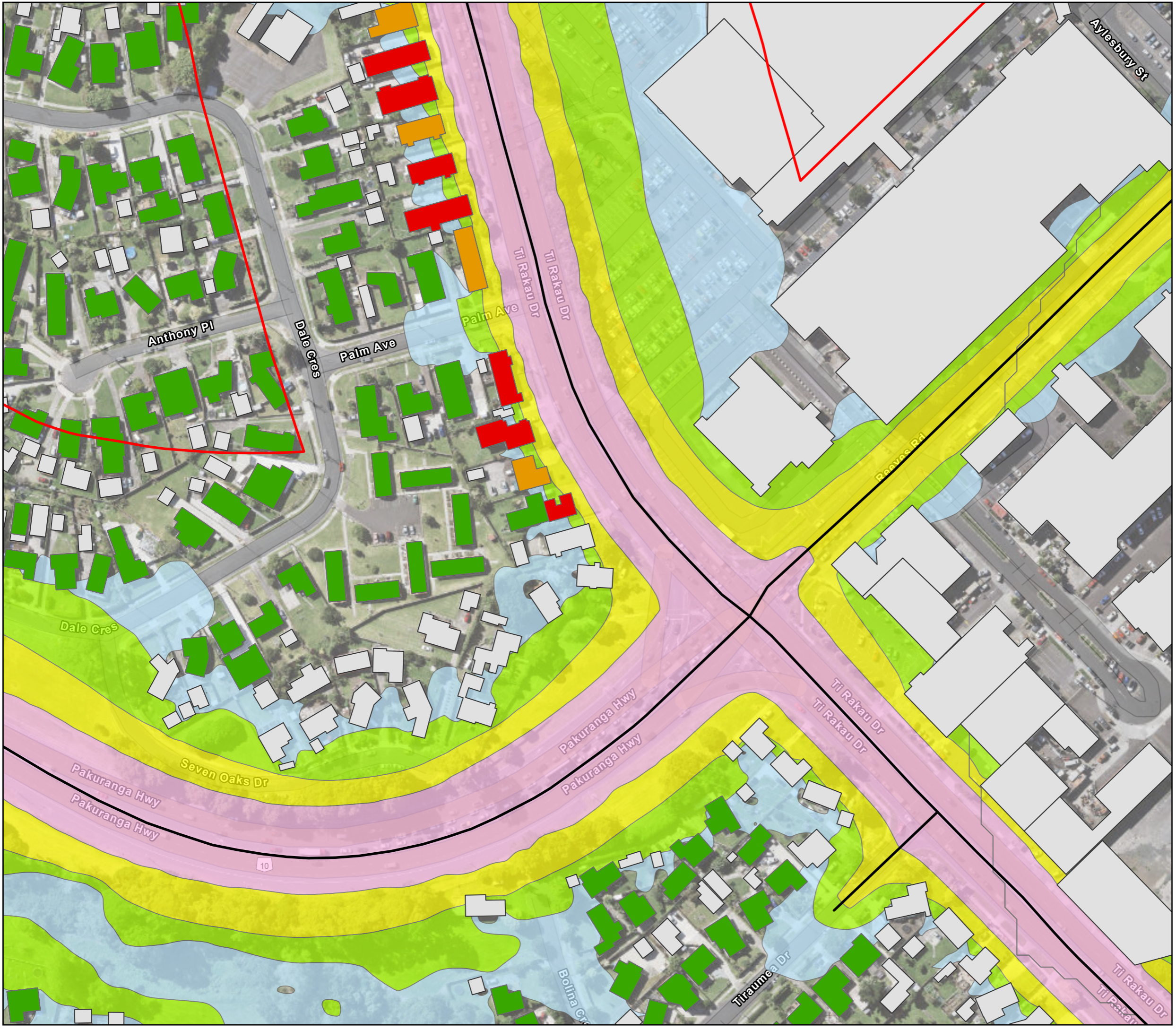
EB2/EB3R Noise Contour Map
Road Traffic Noise
Do Nothing Scenario

Page 3 of 19



Map Creation Date: 30/06/2022
 Author: Shivam Jakhu

This map is shown for reference purposes only. EBA provides this information "as is" with the understanding that it is not guaranteed to be accurate, correct or complete and conclusions drawn from such information are the responsibility of the user. While every effort is made to ensure the information displayed is as accurate and current as possible, EBA will not be held responsible for any loss, damage or inconvenience caused as a result of reliance on such information or data.



Legend

- Assessment Area
- Road Centrelines

PPF Footprints

DoNoth

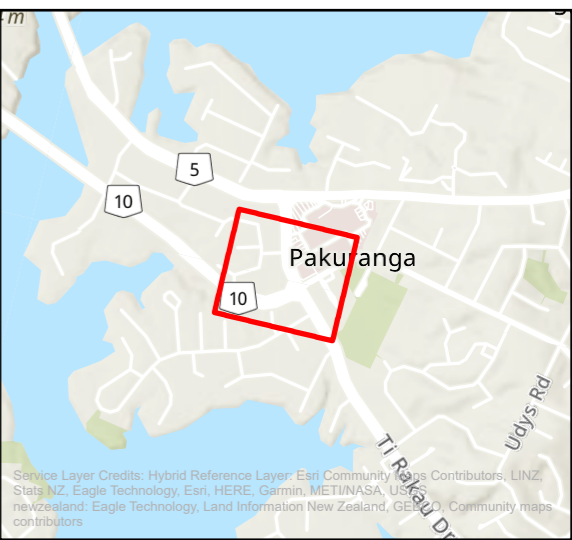
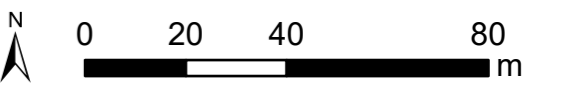
- 64 dB < LAeq(24h)
- 64 dB ≤ LAeq(24h) < 67 dB
- LAeq(24h) ≥ 67 dB
- Other Buildings

Noise Level, dB LAeq

- 55 dB ≤ LAeq(24h) < 60 dB
- 60 dB ≤ LAeq(24h) < 65 dB
- 65 dB ≤ LAeq(24h) < 70 dB
- LAeq(24h) ≥ 70 dB

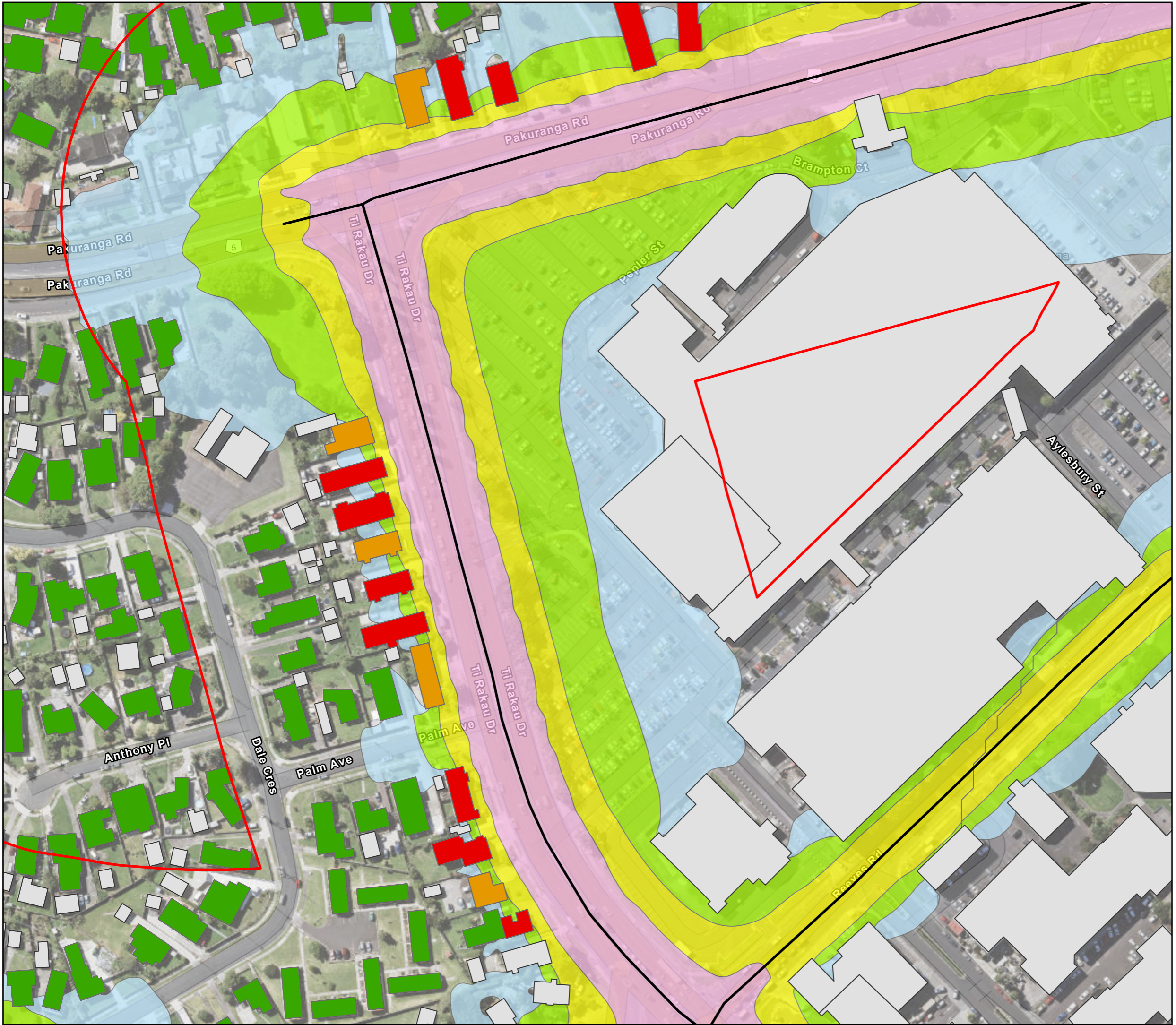
EB2/EB3R Noise Contour Map
Road Traffic Noise
Do Nothing Scenario

Page 4 of 19



Map Creation Date: 30/06/2022
 Author: Shivam Jakhu

This map is shown for reference purposes only. EBA provides this information "as is" with the understanding that it is not guaranteed to be accurate, correct or complete and conclusions drawn from such information are the responsibility of the user. While every effort is made to ensure the information displayed is as accurate and current as possible, EBA will not be held responsible for any loss, damage or inconvenience caused as a result of reliance on such information or data.



Legend

- Assessment Area
- Road Centrelines

PPF Footprints

DoNoth

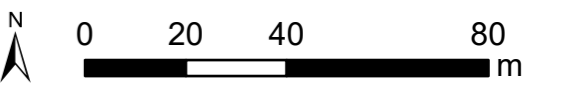
- 64 dB < LAeq(24h)
- 64 dB ≤ LAeq(24h) < 67 dB
- LAeq(24h) ≥ 67 dB
- Other Buildings

Noise Level, dB L_{Aeq}

- 55 dB ≤ LAeq(24h) < 60 dB
- 60 dB ≤ LAeq(24h) < 65 dB
- 65 dB ≤ LAeq(24h) < 70 dB
- LAeq(24h) ≥ 70 dB

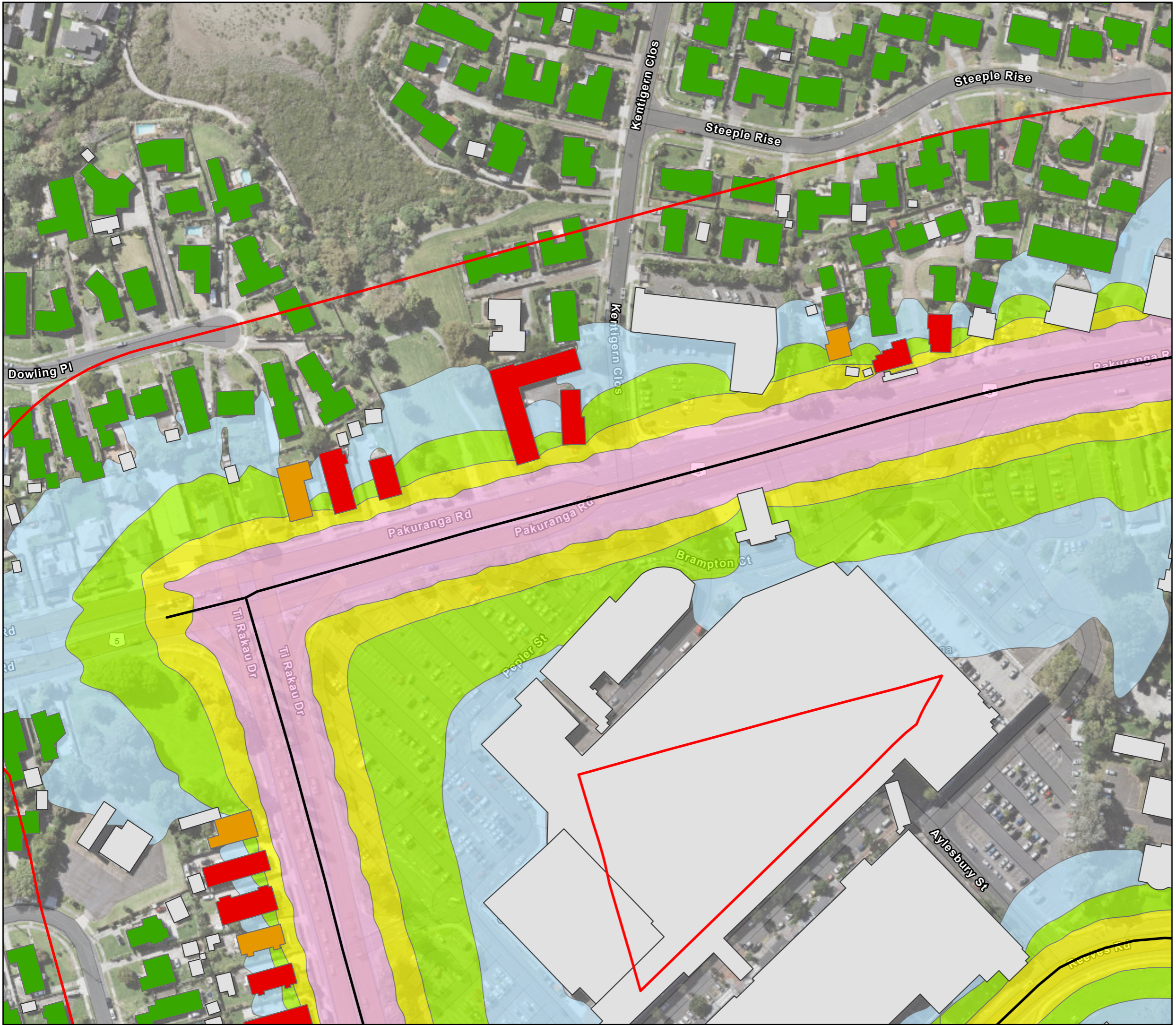
EB2/EB3R Noise Contour Map
Road Traffic Noise
Do Nothing Scenario

Page 5 of 19



Map Creation Date: 30/06/2022
 Author: Shivam Jakhu

This map is shown for reference purposes only. EBA provides this information "as is" with the understanding that it is not guaranteed to be accurate, correct or complete and conclusions drawn from such information are the responsibility of the user. While every effort is made to ensure the information displayed is as accurate and current as possible, EBA will not be held responsible for any loss, damage or inconvenience caused as a result of reliance on such information or data.



Legend

- Assessment Area
- Road Centrelines

PPF Footprints

DoNoth

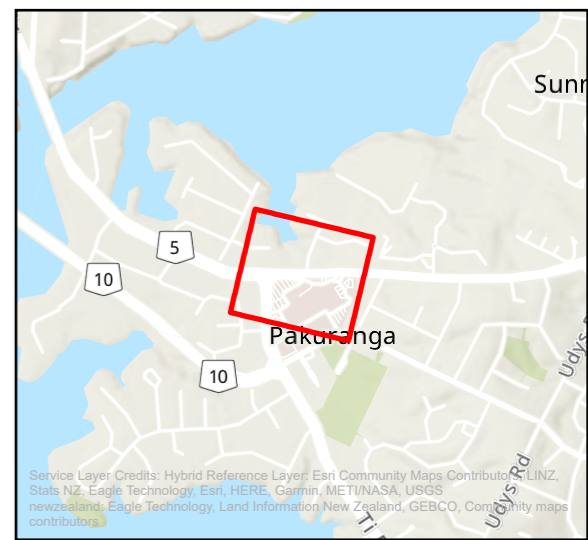
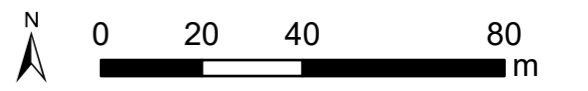
- 64 dB < LAeq(24h)
- 64 dB ≤ LAeq(24h) < 67 dB
- LAeq(24h) ≥ 67 dB
- Other Buildings

Noise Level, dB L_{Aeq}

- 55 dB ≤ LAeq(24h) < 60 dB
- 60 dB ≤ LAeq(24h) < 65 dB
- 65 dB ≤ LAeq(24h) < 70 dB
- LAeq(24h) ≥ 70 dB

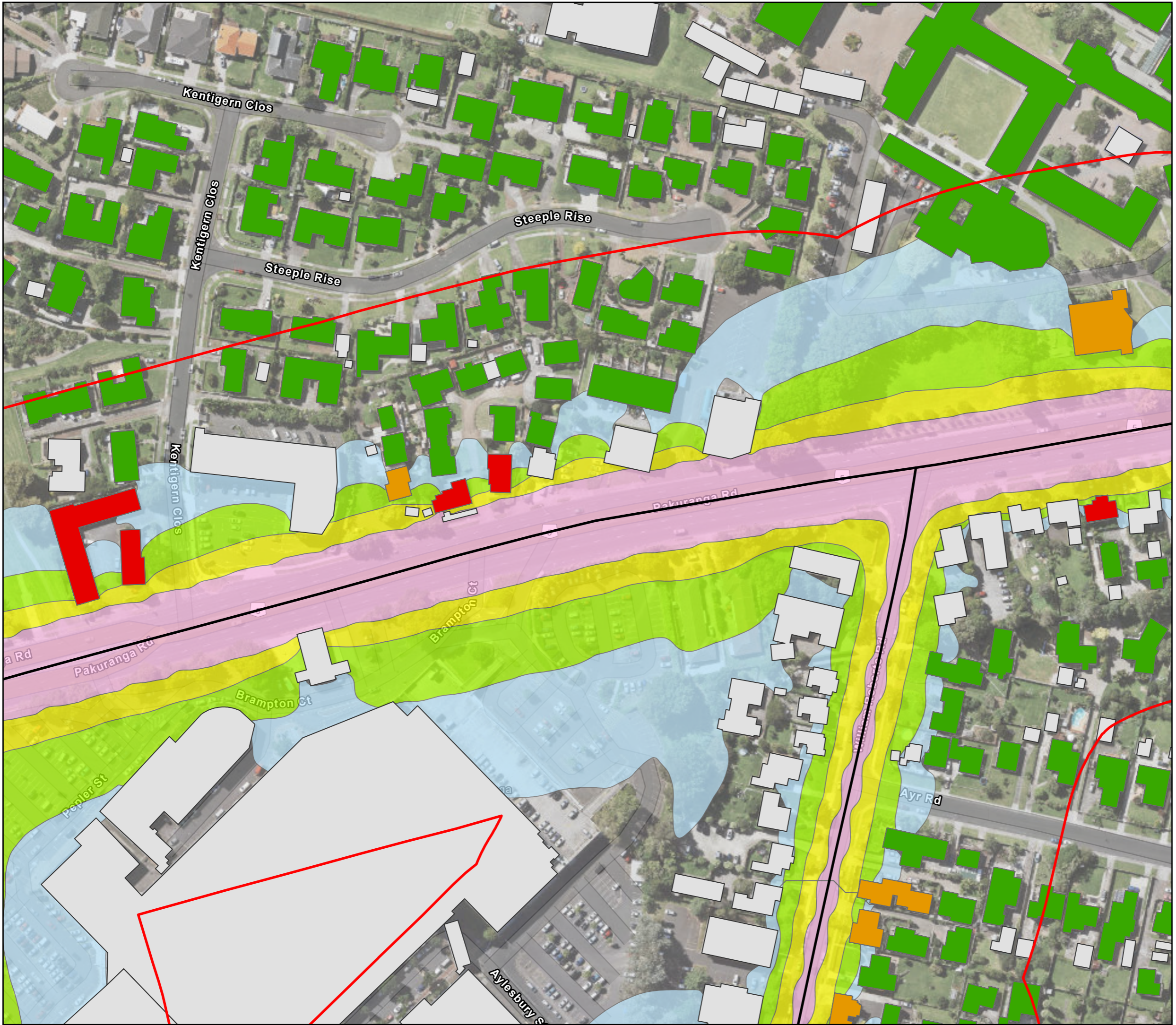
EB2/EB3R Noise Contour Map
Road Traffic Noise
Do Nothing Scenario

Page 6 of 19



Map Creation Date: 30/06/2022
 Author: Shivam Jakhu

This map is shown for reference purposes only. EBA provides this information "as is" with the understanding that it is not guaranteed to be accurate, correct or complete and conclusions drawn from such information are the responsibility of the user. While every effort is made to ensure the information displayed is as accurate and current as possible, EBA will not be held responsible for any loss, damage or inconvenience caused as a result of reliance on such information or data.



Legend

- Assessment Area
- Road Centrelines

PPF Footprints

DoNotth

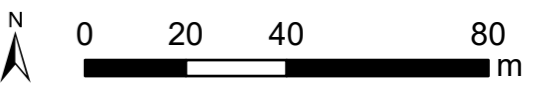
- 64 dB < LAeq(24h)
- 64 dB ≤ LAeq(24h) < 67 dB
- LAeq(24h) ≥ 67 dB
- Other Buildings

Noise Level, dB LAeq

- 55 dB ≤ LAeq(24h) < 60 dB
- 60 dB ≤ LAeq(24h) < 65 dB
- 65 dB ≤ LAeq(24h) < 70 dB
- LAeq(24h) ≥ 70 dB

**EB2/EB3R Noise Contour Map
Road Traffic Noise
Do Nothing Scenario**

Page 7 of 19



Map Creation Date: 30/06/2022
Author: Shivam Jakhu

This map is shown for reference purposes only. EBA provides this information "as is" with the understanding that it is not guaranteed to be accurate, correct or complete and conclusions drawn from such information are the responsibility of the user. While every effort is made to ensure the information displayed is as accurate and current as possible, EBA will not be held responsible for any loss, damage or inconvenience caused as a result of reliance on such information or data.