



**Legend**

- Assessment Area
- Road Centrelines

**PPF Footprints**

**DoNotH**

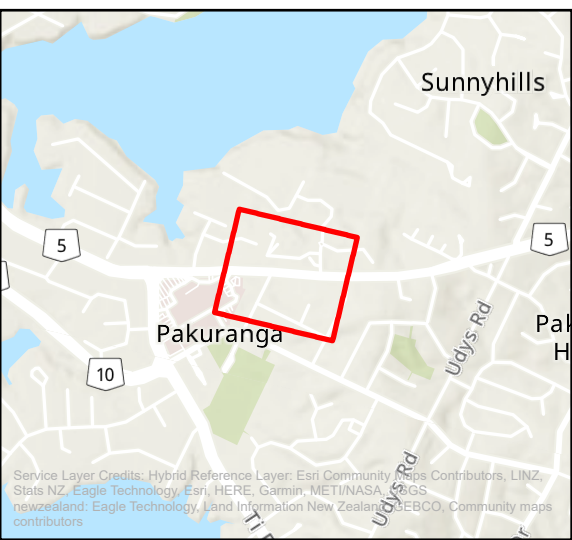
- $64 \text{ dB} < \text{LAeq}(24\text{h})$
- $64 \text{ dB} \leq \text{LAeq}(24\text{h}) < 67 \text{ dB}$
- $\text{LAeq}(24\text{h}) \geq 67 \text{ dB}$
- Other Buildings

**Noise Level, dB  $L_{Aeq}$**

- $55 \text{ dB} \leq \text{LAeq}(24\text{h}) < 60 \text{ dB}$
- $60 \text{ dB} \leq \text{LAeq}(24\text{h}) < 65 \text{ dB}$
- $65 \text{ dB} \leq \text{LAeq}(24\text{h}) < 70 \text{ dB}$
- $\text{LAeq}(24\text{h}) \geq 70 \text{ dB}$

**EB2/EB3R Noise Contour Map**  
**Road Traffic Noise**  
**Do Nothing Scenario**

Page 8 of 19



Map Creation Date: 30/06/2022  
 Author: Shivam Jakhu

This map is shown for reference purposes only. EBA provides this information "as is" with the understanding that it is not guaranteed to be accurate, correct or complete and conclusions drawn from such information are the responsibility of the user. While every effort is made to ensure the information displayed is as accurate and current as possible, EBA will not be held responsible for any loss, damage or inconvenience caused as a result of reliance on such information or data.





**Legend**

- Assessment Area
- Road Centrelines

**PPF Footprints**

**DoNotth**

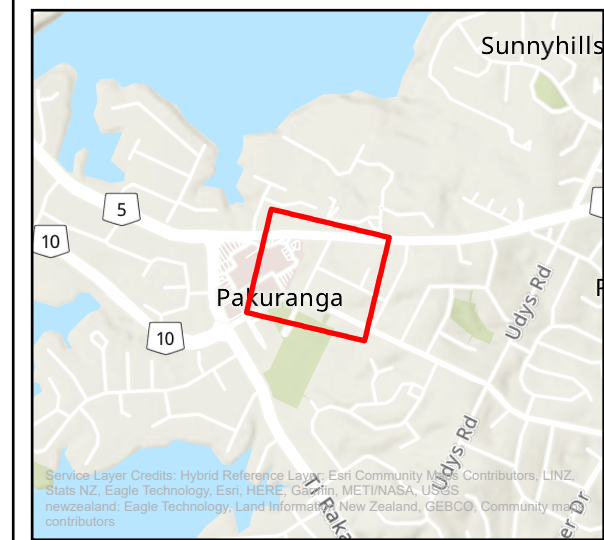
- $64 \text{ dB} < \text{LAeq}(24\text{h})$
- $64 \text{ dB} \leq \text{LAeq}(24\text{h}) < 67 \text{ dB}$
- $\text{LAeq}(24\text{h}) \geq 67 \text{ dB}$
- Other Buildings

**Noise Level, dB  $\text{L}_{\text{Aeq}}$**

- $55 \text{ dB} \leq \text{LAeq}(24\text{h}) < 60 \text{ dB}$
- $60 \text{ dB} \leq \text{LAeq}(24\text{h}) < 65 \text{ dB}$
- $65 \text{ dB} \leq \text{LAeq}(24\text{h}) < 70 \text{ dB}$
- $\text{LAeq}(24\text{h}) \geq 70 \text{ dB}$

**EB2/EB3R Noise Contour Map**  
**Road Traffic Noise**  
**Do Nothing Scenario**

Page 9 of 19



Map Creation Date: 30/06/2022  
 Author: Shivam Jakhu

This map is shown for reference purposes only. EBA provides this information "as is" with the understanding that it is not guaranteed to be accurate, correct or complete and conclusions drawn from such information are the responsibility of the user. While every effort is made to ensure the information displayed is as accurate and current as possible, EBA will not be held responsible for any loss, damage or inconvenience caused as a result of reliance on such information or data.





**Legend**

- Assessment Area
- Road Centrelines
- PPF Footprints**
- DoNoth**
- 64 dB < LAeq(24h)
- 64 dB ≤ LAeq(24h) < 67 dB
- Other Buildings
- Noise Level, dB LAeq**
- 55 dB ≤ LAeq(24h) < 60 dB
- 60 dB ≤ LAeq(24h) < 65 dB
- 65 dB ≤ LAeq(24h) < 70 dB
- LAeq(24h) ≥ 70 dB

**EB2/EB3R Noise Contour Map  
Road Traffic Noise  
Do Nothing Scenario**

Page 10 of 19



Service Layer Credits: Hybrid Reference Layer: Esri, Community Maps Contributors, LINZ, Stats NZ, Eagle Technology, Esri, HERE, Garmin, Mapbox, UNAS, USGS, newzealand, Eagle Technology, Land Information New Zealand, GEBCO, Community map contributors

Map Creation Date: 30/06/2022  
Author: Shivam Jakhu

This map is shown for reference purposes only. EBA provides this information "as is" with the understanding that it is not guaranteed to be accurate, correct or complete and conclusions drawn from such information are the responsibility of the user. While every effort is made to ensure the information displayed is as accurate and current as possible, EBA will not be held responsible for any loss, damage or inconvenience caused as a result of reliance on such information or data.





**Legend**

- Assessment Area
- Road Centrelines

**PPF Footprints**

**DoNoth**

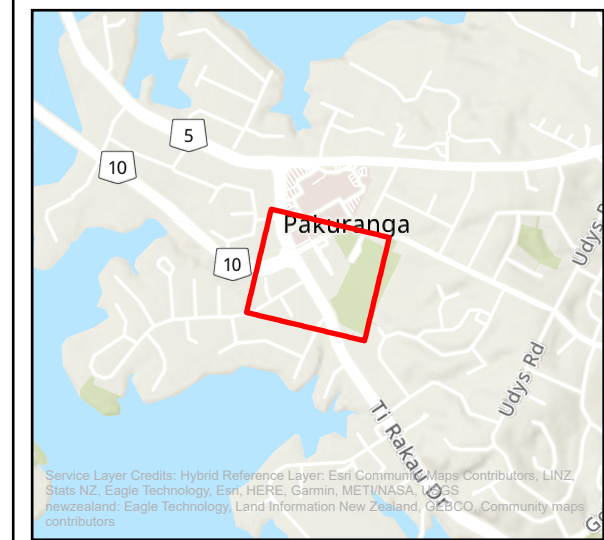
- 64 dB < LAeq(24h)
- 64 dB ≤ LAeq(24h) < 67 dB
- LAeq(24h) ≥ 67 dB
- Other Buildings

**Noise Level, dB LAeq**

- 55 dB ≤ LAeq(24h) < 60 dB
- 60 dB ≤ LAeq(24h) < 65 dB
- 65 dB ≤ LAeq(24h) < 70 dB
- LAeq(24h) ≥ 70 dB

**EB2/EB3R Noise Contour Map**  
**Road Traffic Noise**  
**Do Nothing Scenario**

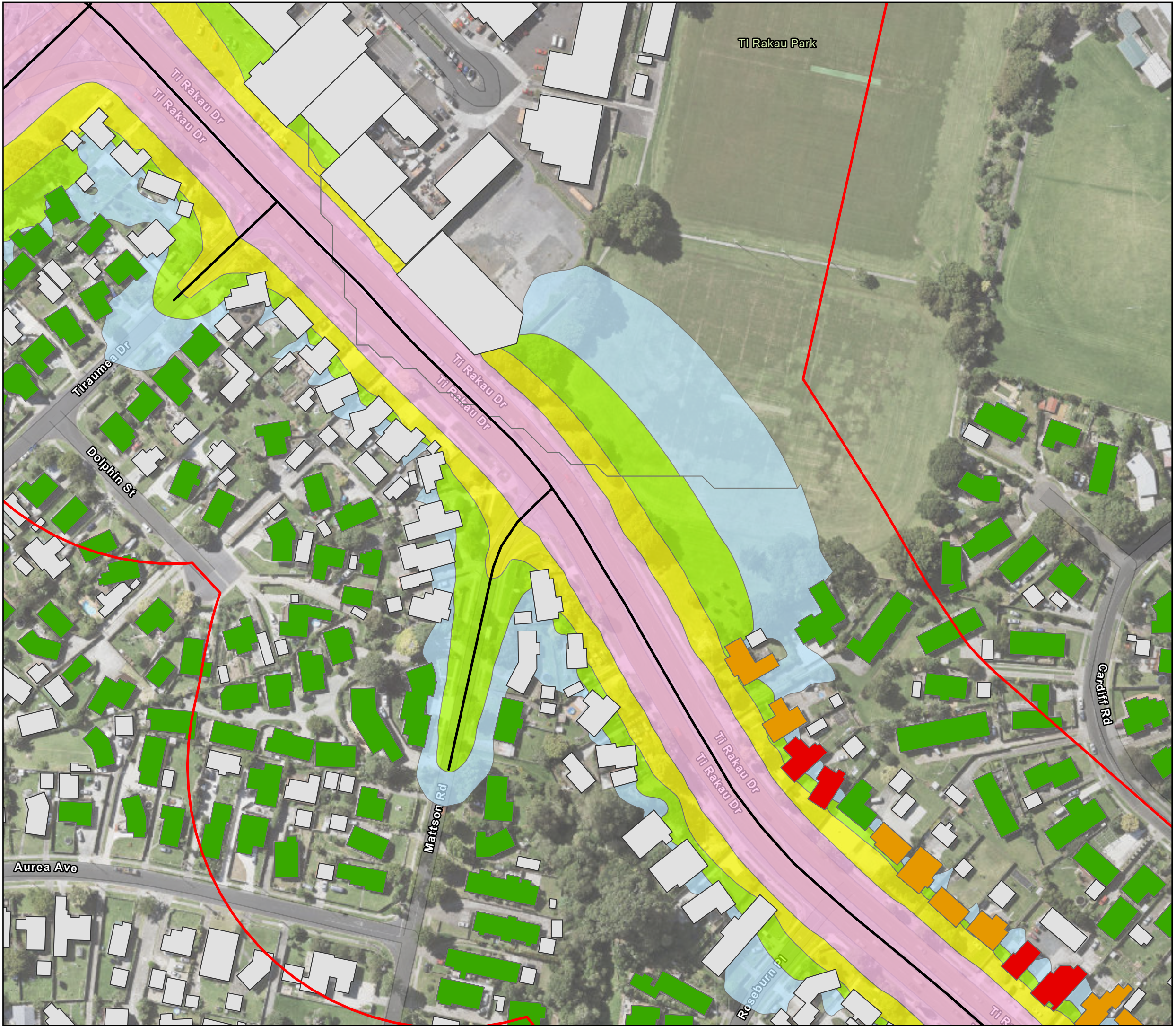
Page 11 of 19



Map Creation Date: 30/06/2022  
 Author: Shivam Jakhu

This map is shown for reference purposes only. EBA provides this information "as is" with the understanding that it is not guaranteed to be accurate, correct or complete and conclusions drawn from such information are the responsibility of the user. While every effort is made to ensure the information displayed is as accurate and current as possible, EBA will not be held responsible for any loss, damage or inconvenience caused as a result of reliance on such information or data.





**Legend**

- Assessment Area
- Road Centrelines

**PPF Footprints**

**DoNoth**

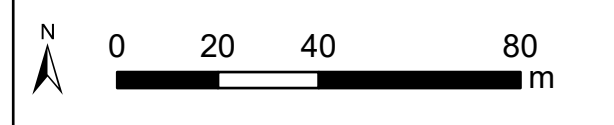
- 64 dB < LAeq(24h)
- 64 dB ≤ LAeq(24h) < 67 dB
- LAeq(24h) ≥ 67 dB
- Other Buildings

**Noise Level, dB LAeq**

- 55 dB ≤ LAeq(24h) < 60 dB
- 60 dB ≤ LAeq(24h) < 65 dB
- 65 dB ≤ LAeq(24h) < 70 dB
- LAeq(24h) ≥ 70 dB

**EB2/EB3R Noise Contour Map**  
**Road Traffic Noise**  
**Do Nothing Scenario**

Page 12 of 19



Map Creation Date: 30/06/2022  
 Author: Shivam Jakhu

This map is shown for reference purposes only. EBA provides this information "as is" with the understanding that it is not guaranteed to be accurate, correct or complete and conclusions drawn from such information are the responsibility of the user. While every effort is made to ensure the information displayed is as accurate and current as possible, EBA will not be held responsible for any loss, damage or inconvenience caused as a result of reliance on such information or data.

Eastern Busway Alliance

Fletcher | Hacciona | AECOM | Jacobs | Let's get that Auckland moving





**Legend**

- Assessment Area
- Road Centrelines

**PPF Footprints**

**DoNoth**

- $64 \text{ dB} < \text{LAeq}(24\text{h})$
- $64 \text{ dB} \leq \text{LAeq}(24\text{h}) < 67 \text{ dB}$
- $\text{LAeq}(24\text{h}) \geq 67 \text{ dB}$
- Other Buildings

**Noise Level, dB  $L_{Aeq}$**

- $55 \text{ dB} \leq \text{LAeq}(24\text{h}) < 60 \text{ dB}$
- $60 \text{ dB} \leq \text{LAeq}(24\text{h}) < 65 \text{ dB}$
- $65 \text{ dB} \leq \text{LAeq}(24\text{h}) < 70 \text{ dB}$
- $\text{LAeq}(24\text{h}) \geq 70 \text{ dB}$

**EB2/EB3R Noise Contour Map**  
**Road Traffic Noise**  
**Do Nothing Scenario**

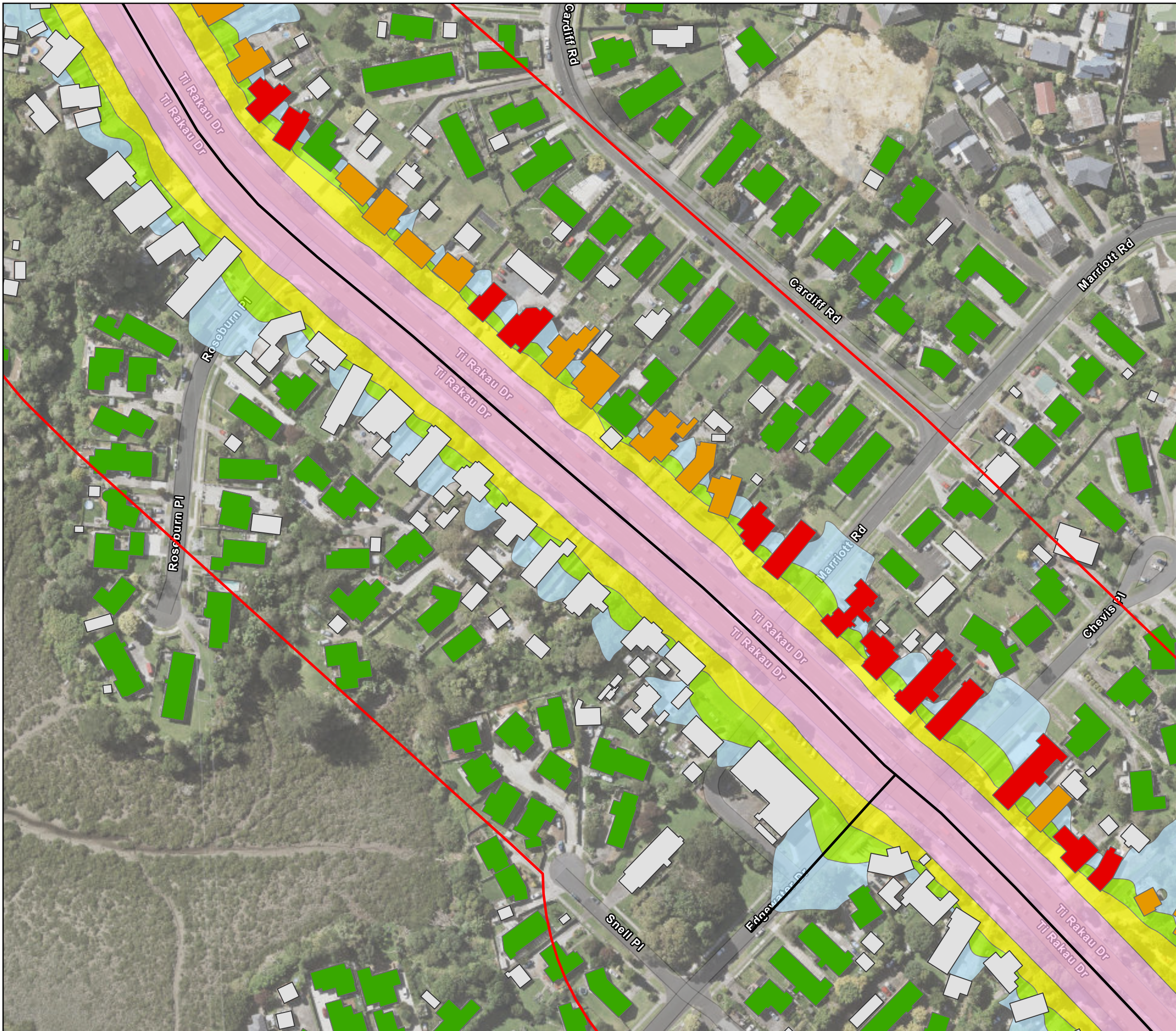
Page 13 of 19



Map Creation Date: 30/06/2022  
 Author: Shivam Jakhu

This map is shown for reference purposes only. EBA provides this information "as is" with the understanding that it is not guaranteed to be accurate, correct or complete and conclusions drawn from such information are the responsibility of the user. While every effort is made to ensure the information displayed is as accurate and current as possible, EBA will not be held responsible for any loss, damage or inconvenience caused as a result of reliance on such information or data.





### Legend

Assessment Area

Road Centrelines

### PPF Footprints

#### DoNoth

64 dB < LAeq(24h)

64 dB ≤ LAeq(24h) < 67 dB

LAeq(24h) ≥ 67 dB

Other Buildings

#### Noise Level, dB LAeq

55 dB ≤ LAeq(24h) < 60 dB

60 dB ≤ LAeq(24h) < 65 dB

65 dB ≤ LAeq(24h) < 70 dB

LAeq(24h) ≥ 70 dB

### EB2/EB3R Noise Contour Map

#### Road Traffic Noise

#### Do Nothing Scenario

Page 14 of 19



Map Creation Date: 30/06/2022

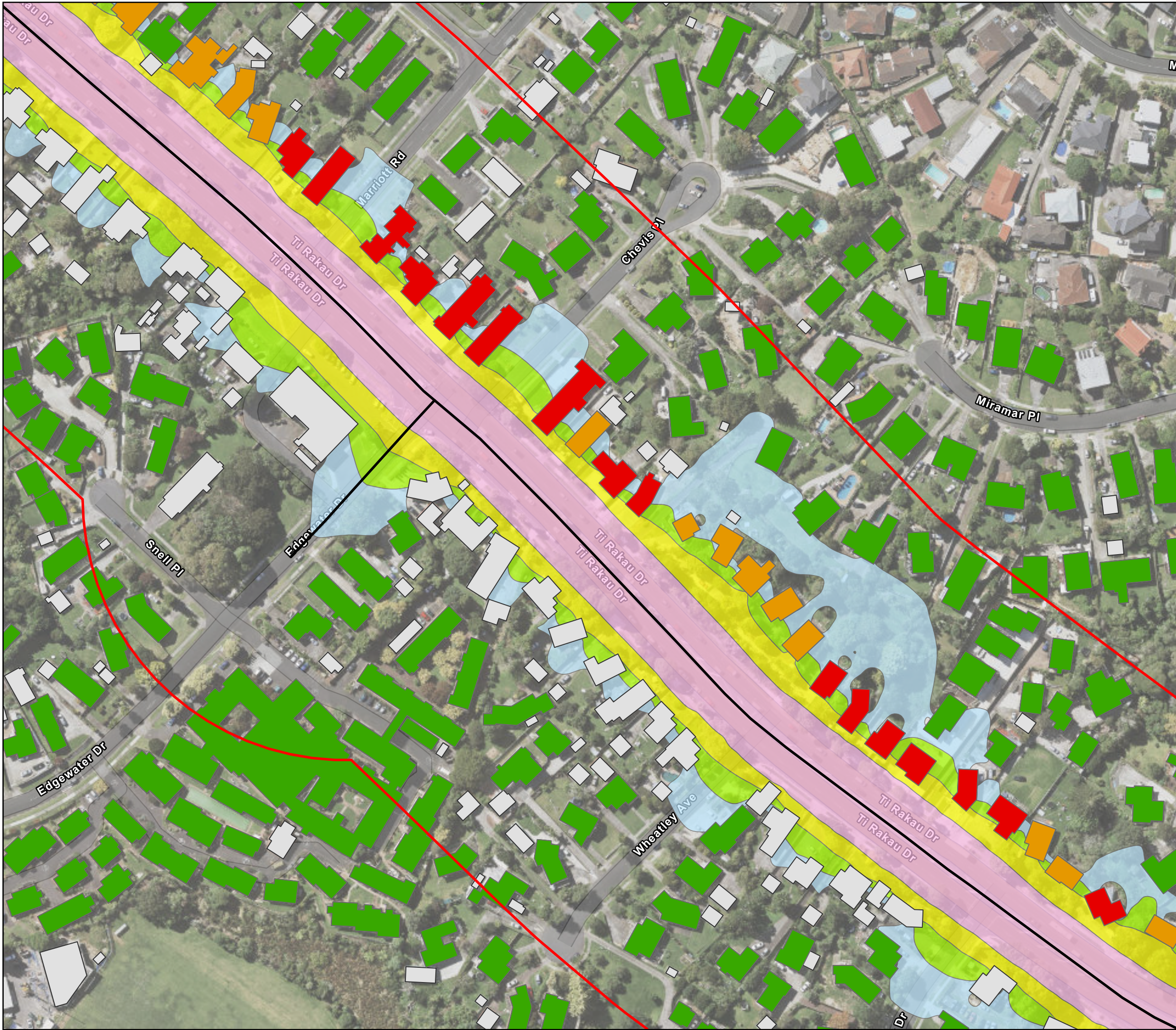
Author: Shivam Jakhu

This map is shown for reference purposes only. EBA provides this information "as is" with the understanding that it is not guaranteed to be accurate, correct or complete and conclusions drawn from such information are the responsibility of the user. While every effort is made to ensure the information displayed is as accurate and current as possible, EBA will not be held responsible for any loss, damage or inconvenience caused as a result of reliance on such information or data.

Eastern Busway Alliance

Fletcher Hacciona AECOM Jacobs





**Legend**

- Assessment Area
- Road Centrelines

**PPF Footprints**

**DoNotth**

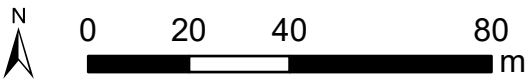
- $64 \text{ dB} < \text{LAeq}(24\text{h})$
- $64 \text{ dB} \leq \text{LAeq}(24\text{h}) < 67 \text{ dB}$
- $\text{LAeq}(24\text{h}) \geq 67 \text{ dB}$
- Other Buildings

**Noise Level, dB  $L_{Aeq}$**

- $55 \text{ dB} \leq \text{LAeq}(24\text{h}) < 60 \text{ dB}$
- $60 \text{ dB} \leq \text{LAeq}(24\text{h}) < 65 \text{ dB}$
- $65 \text{ dB} \leq \text{LAeq}(24\text{h}) < 70 \text{ dB}$
- $\text{LAeq}(24\text{h}) \geq 70 \text{ dB}$

**EB2/EB3R Noise Contour Map  
Road Traffic Noise  
Do Nothing Scenario**

Page 15 of 19



Map Creation Date: 30/06/2022  
Author: Shivam Jakhu

This map is shown for reference purposes only. EBA provides this information "as is" with the understanding that it is not guaranteed to be accurate, correct or complete and conclusions drawn from such information are the responsibility of the user. While every effort is made to ensure the information displayed is as accurate and current as possible, EBA will not be held responsible for any loss, damage or inconvenience caused as a result of reliance on such information or data.





**Legend**

- Assessment Area
- Road Centrelines

**PPF Footprints**

**DoNoth**

- 64 dB < LAeq(24h)
- 64 dB ≤ LAeq(24h) < 67 dB
- LAeq(24h) ≥ 67 dB
- Other Buildings

**Noise Level, dB LAeq**

- 55 dB ≤ LAeq(24h) < 60 dB
- 60 dB ≤ LAeq(24h) < 65 dB
- 65 dB ≤ LAeq(24h) < 70 dB
- LAeq(24h) ≥ 70 dB

**EB2/EB3R Noise Contour Map**  
**Road Traffic Noise**  
**Do Nothing Scenario**

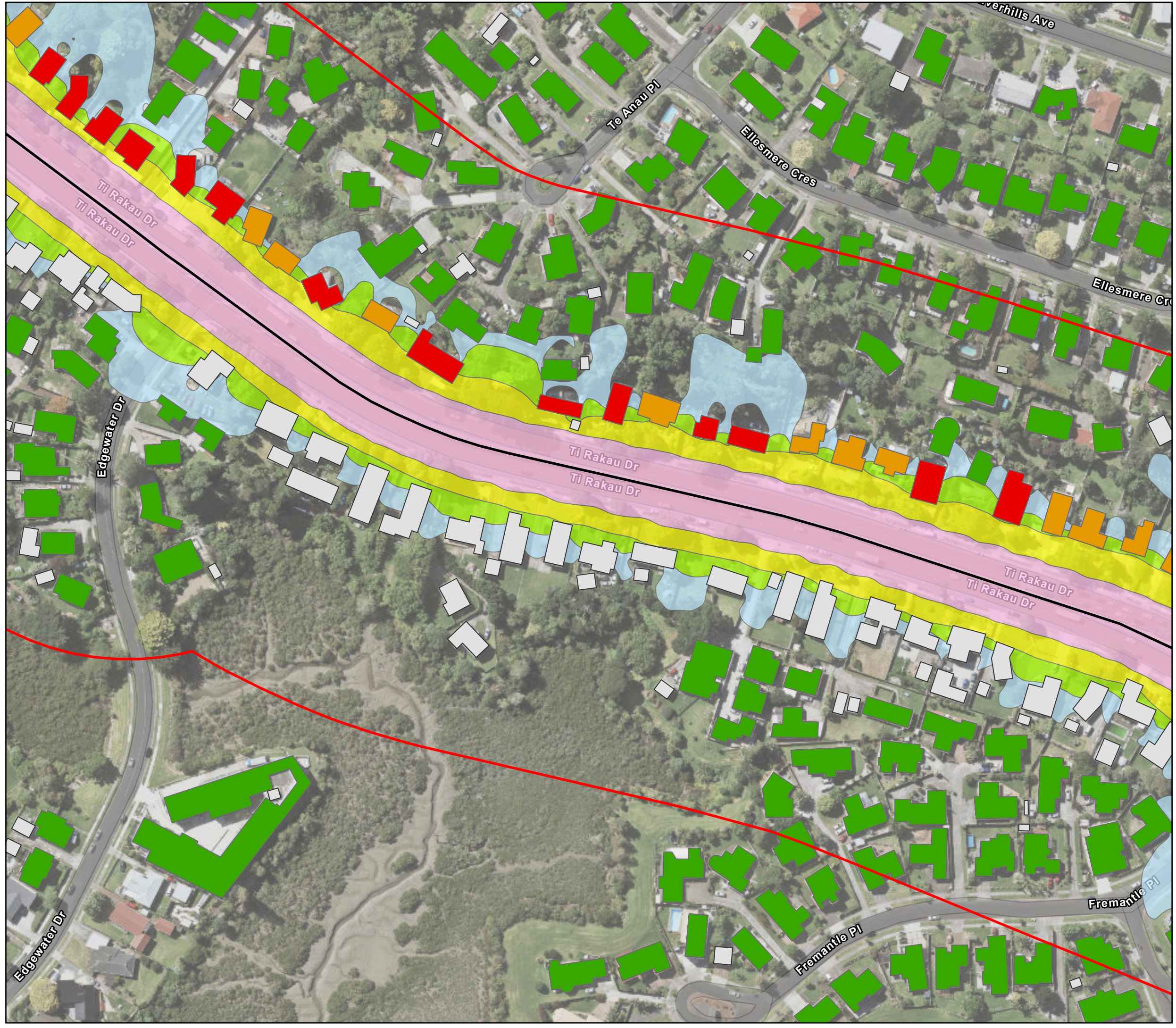
Page 16 of 19



Map Creation Date: 30/06/2022  
 Author: Shivam Jakhu

This map is shown for reference purposes only. EBA provides this information "as is" with the understanding that it is not guaranteed to be accurate, correct or complete and conclusions drawn from such information are the responsibility of the user. While every effort is made to ensure the information displayed is as accurate and current as possible, EBA will not be held responsible for any loss, damage or inconvenience caused as a result of reliance on such information or data.





**Legend**

- Assessment Area
- Road Centrelines

**PPF Footprints**

**DoNotth**

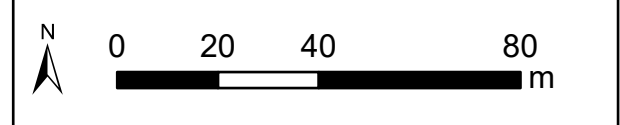
- 64 dB < LAeq(24h)
- 64 dB ≤ LAeq(24h) < 67 dB
- LAeq(24h) ≥ 67 dB
- Other Buildings

**Noise Level, dB LAeq**

- 55 dB ≤ LAeq(24h) < 60 dB
- 60 dB ≤ LAeq(24h) < 65 dB
- 65 dB ≤ LAeq(24h) < 70 dB
- LAeq(24h) ≥ 70 dB

**EB2/EB3R Noise Contour Map**  
**Road Traffic Noise**  
**Do Nothing Scenario**

Page 17 of 19



Map Creation Date: 30/06/2022  
 Author: Shivam Jakhu

This map is shown for reference purposes only. EBA provides this information "as is" with the understanding that it is not guaranteed to be accurate, correct or complete and conclusions drawn from such information are the responsibility of the user. While every effort is made to ensure the information displayed is as accurate and current as possible, EBA will not be held responsible for any loss, damage or inconvenience caused as a result of reliance on such information or data.





**Legend**

- Assessment Area
- Road Centrelines

**PPF Footprints**

**DoNotH**

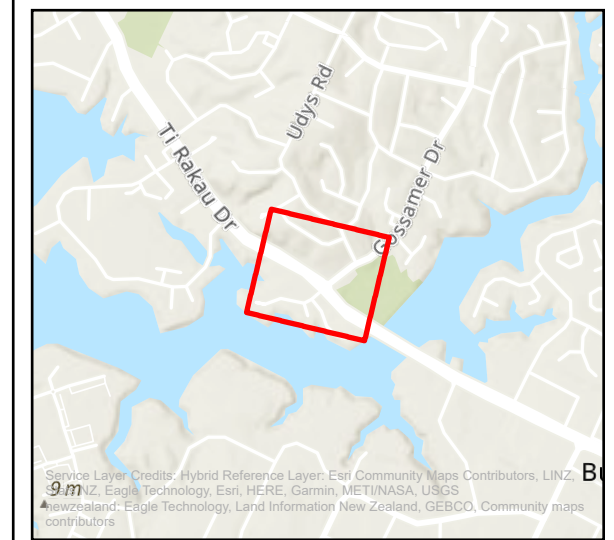
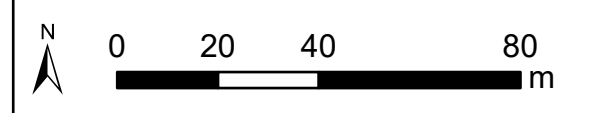
- 64 dB < LAeq(24h)
- 64 dB ≤ LAeq(24h) < 67 dB
- LAeq(24h) ≥ 67 dB
- Other Buildings

**Noise Level, dB L<sub>Aeq</sub>**

- 55 dB ≤ LAeq(24h) < 60 dB
- 60 dB ≤ LAeq(24h) < 65 dB
- 65 dB ≤ LAeq(24h) < 70 dB
- LAeq(24h) ≥ 70 dB

**EB2/EB3R Noise Contour Map**  
**Road Traffic Noise**  
**Do Nothing Scenario**

Page 18 of 19



Map Creation Date: 30/06/2022  
 Author: Shivam Jakhu

This map is shown for reference purposes only. EBA provides this information "as is" with the understanding that it is not guaranteed to be accurate, correct or complete and conclusions drawn from such information are the responsibility of the user. While every effort is made to ensure the information displayed is as accurate and current as possible, EBA will not be held responsible for any loss, damage or inconvenience caused as a result of reliance on such information or data.





**Legend**

- Assessment Area
- Road Centrelines

**PPF Footprints**

**DoNoth**

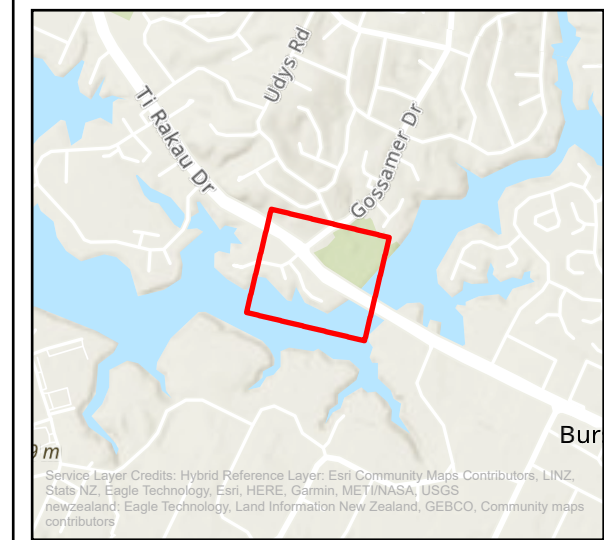
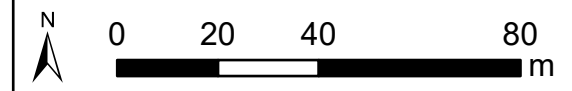
- 64 dB < LAeq(24h)
- 64 dB ≤ LAeq(24h) < 67 dB
- LAeq(24h) ≥ 67 dB
- Other Buildings

**Noise Level, dB LAeq**

- 55 dB ≤ LAeq(24h) < 60 dB
- 60 dB ≤ LAeq(24h) < 65 dB
- 65 dB ≤ LAeq(24h) < 70 dB
- LAeq(24h) ≥ 70 dB

**EB2/EB3R Noise Contour Map  
Road Traffic Noise  
Do Nothing Scenario**

Page 19 of 19



Map Creation Date: 30/06/2022  
Author: Shivam Jakhu

This map is shown for reference purposes only. EBA provides this information "as is" with the understanding that it is not guaranteed to be accurate, correct or complete and conclusions drawn from such information are the responsibility of the user. While every effort is made to ensure the information displayed is as accurate and current as possible, EBA will not be held responsible for any loss, damage or inconvenience caused as a result of reliance on such information or data.





**Legend**

- Assessment Area
- Road Centrelines

**PPF Footprints**

**Noise Levels, Do Minimum Scenario**

64 dB < LAeq(24h)

Other Buildings

**Noise Contours**

**Noise Level, dB LAeq**

55 dB ≤ LAeq(24h) < 60 dB

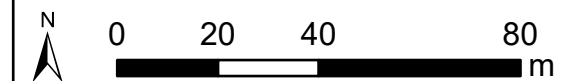
60 dB ≤ LAeq(24h) < 65 dB

65 dB ≤ LAeq(24h) < 70 dB

LAeq(24h) ≥ 70 dB

**EB2/EB3R Noise Contour Map  
Road Traffic Noise  
Do Minimum Scenario**

Page 1 of 19



Service Layer Credits: Hybrid Reference Layer: Esri, Community Maps Contributors, LINZ, Stats NZ, Eagle Technology, Esri, HERE, Garmin, METI/NASA, USGS, newzealand: Eagle Technology, Land Information New Zealand, GEBCO, Community maps contributors

Map Creation Date: 28/02/2022  
Author: Shivam Jakhu

This map is shown for reference purposes only. EBA provides this information "as is" with the understanding that it is not guaranteed to be accurate, correct or complete and conclusions drawn from such information are the responsibility of the user. While every effort is made to ensure the information displayed is as accurate and current as possible, EBA will not be held responsible for any loss, damage or inconvenience caused as a result of reliance on such information or data.





**Legend**

- Assessment Area
- Road Centrelines
- Safety Barriers

**PPF Footprints**

**Noise Levels, Do Minimum Scenario**

- 64 dB < LAeq(24h)
- 64 dB ≤ LAeq(24h) < 67 dB
- Other Buildings

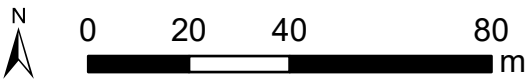
**Noise Contours**

**Noise Level, dB LAeq**

- 55 dB ≤ LAeq(24h) < 60 dB
- 60 dB ≤ LAeq(24h) < 65 dB
- 65 dB ≤ LAeq(24h) < 70 dB
- LAeq(24h) ≥ 70 dB

**EB2/EB3R Noise Contour Map  
Road Traffic Noise  
Do Minimum Scenario**

Page 2 of 19



Map Creation Date: 28/02/2022  
Author: Shivam Jakhu

This map is shown for reference purposes only. EBA provides this information "as is" with the understanding that it is not guaranteed to be accurate, correct or complete and conclusions drawn from such information are the responsibility of the user. While every effort is made to ensure the information displayed is as accurate and current as possible, EBA will not be held responsible for any loss, damage or inconvenience caused as a result of reliance on such information or data.





**Legend**

- Assessment Area
- Road Centrelines
- Safety Barriers

**PPF Footprints**

**Noise Levels, Do Minimum Scenario**

- $64 \text{ dB} < \text{LAeq}(24\text{h})$
- $64 \text{ dB} \leq \text{LAeq}(24\text{h}) < 67 \text{ dB}$
- $\text{LAeq}(24\text{h}) \geq 67 \text{ dB}$
- Other Buildings

**Noise Contours**

**Noise Level, dB  $\text{L}_{\text{Aeq}}$**

- $55 \text{ dB} \leq \text{LAeq}(24\text{h}) < 60 \text{ dB}$
- $60 \text{ dB} \leq \text{LAeq}(24\text{h}) < 65 \text{ dB}$
- $65 \text{ dB} \leq \text{LAeq}(24\text{h}) < 70 \text{ dB}$
- $\text{LAeq}(24\text{h}) \geq 70 \text{ dB}$

**EB2/EB3R Noise Contour Map**  
**Road Traffic Noise**  
**Do Minimum Scenario**

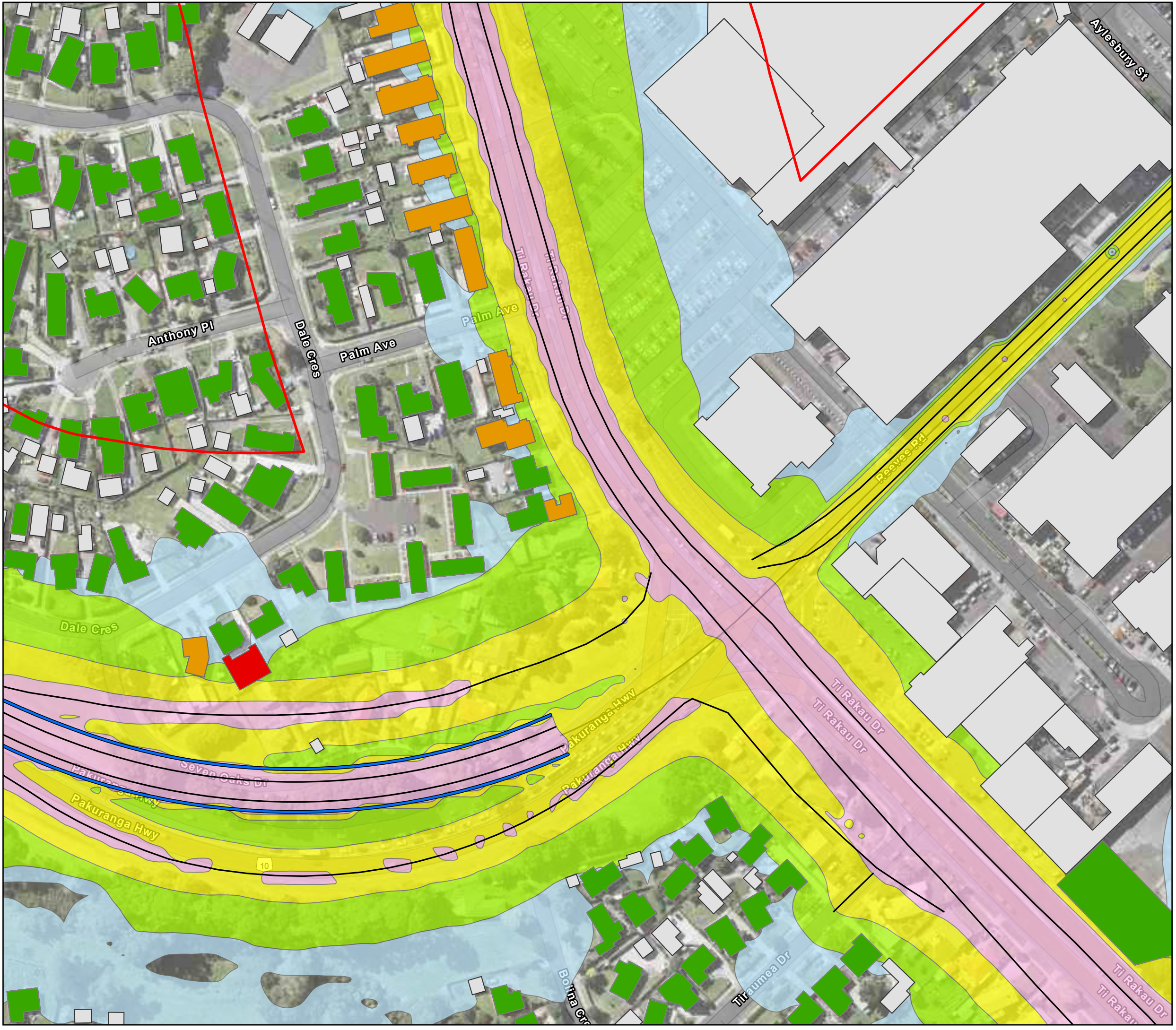
Page 3 of 19



Map Creation Date: 28/02/2022  
 Author: Shivam Jakhu

This map is shown for reference purposes only. EBA provides this information "as is" with the understanding that it is not guaranteed to be accurate, correct or complete and conclusions drawn from such information are the responsibility of the user. While every effort is made to ensure the information displayed is as accurate and current as possible, EBA will not be held responsible for any loss, damage or inconvenience caused as a result of reliance on such information or data.





**Legend**

- Assessment Area
- Road Centrelines
- Safety Barriers

**PPF Footprints**

**Noise Levels, Do Minimum Scenario**

- 64 dB < LAeq(24h)
- 64 dB ≤ LAeq(24h) < 67 dB
- LAeq(24h) ≥ 67 dB
- Other Buildings

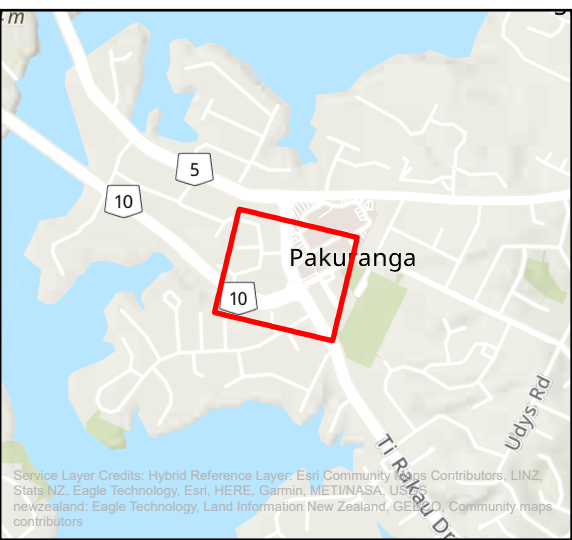
**Noise Contours**

Noise Level, dB LAeq

- 55 dB ≤ LAeq(24h) < 60 dB
- 60 dB ≤ LAeq(24h) < 65 dB
- 65 dB ≤ LAeq(24h) < 70 dB
- LAeq(24h) ≥ 70 dB

**EB2/EB3R Noise Contour Map**  
**Road Traffic Noise**  
**Do Minimum Scenario**

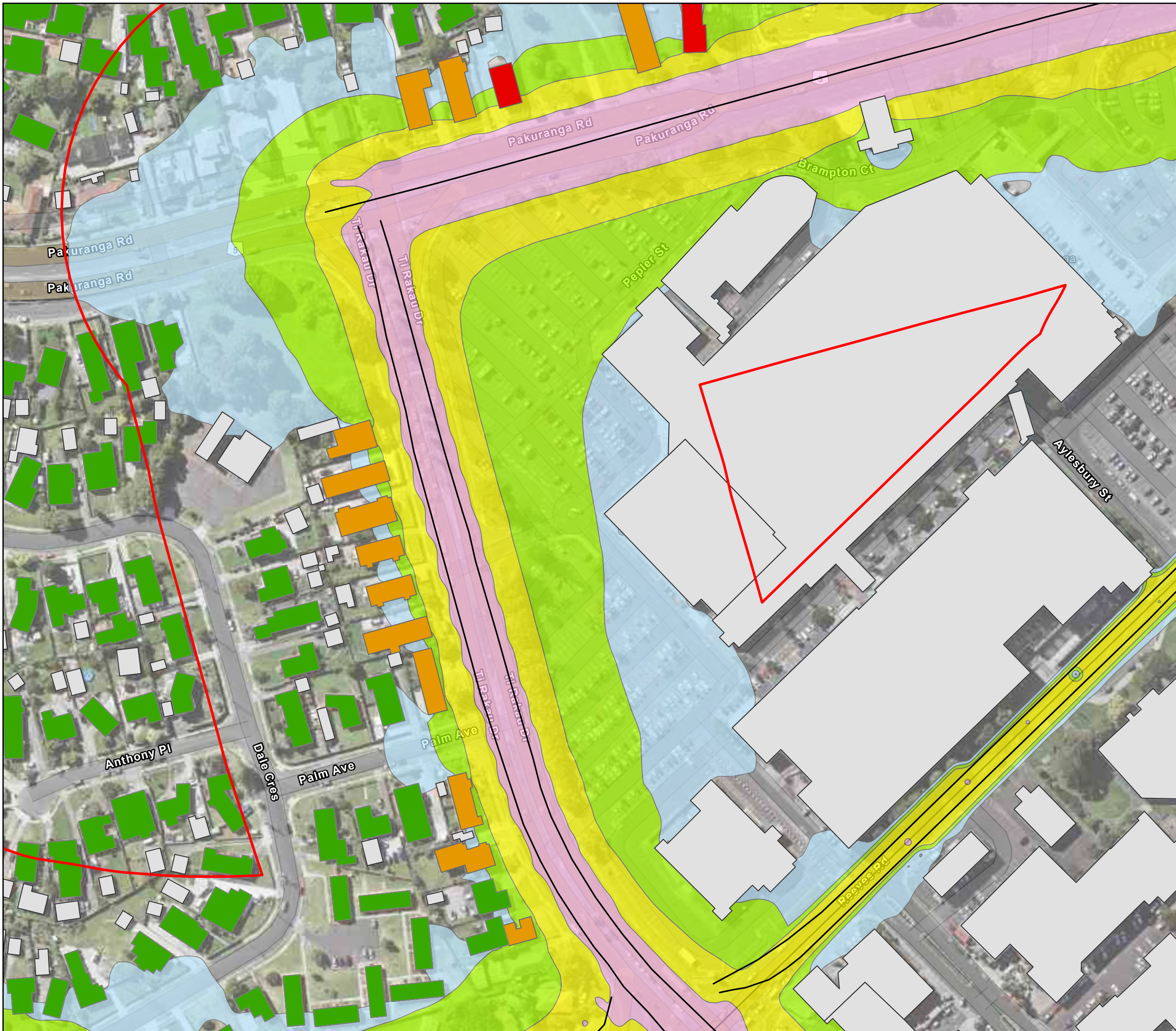
Page 4 of 19



Map Creation Date: 28/02/2022  
 Author: Shivam Jakhu

This map is shown for reference purposes only. EBA provides this information "as is" with the understanding that it is not guaranteed to be accurate, correct or complete and conclusions drawn from such information are the responsibility of the user. While every effort is made to ensure the information displayed is as accurate and current as possible, EBA will not be held responsible for any loss, damage or inconvenience caused as a result of reliance on such information or data.





**Legend**

- Assessment Area
- Road Centrelines

**PPF Footprints**

**Noise Levels, Do Minimum Scenario**

- 64 dB < LAeq(24h)
- 64 dB ≤ LAeq(24h) < 67 dB
- LAeq(24h) ≥ 67 dB
- Other Buildings

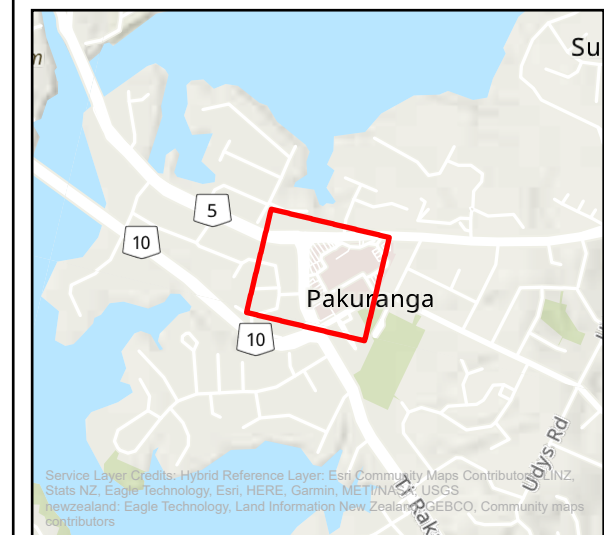
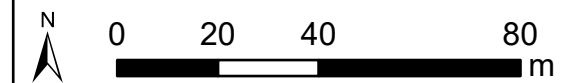
**Noise Contours**

**Noise Level, dB LAeq**

- 55 dB ≤ LAeq(24h) < 60 dB
- 60 dB ≤ LAeq(24h) < 65 dB
- 65 dB ≤ LAeq(24h) < 70 dB
- LAeq(24h) ≥ 70 dB

**EB2/EB3R Noise Contour Map  
Road Traffic Noise  
Do Minimum Scenario**

Page 5 of 19



Map Creation Date: 28/02/2022  
Author: Shivam Jakhu

This map is shown for reference purposes only. EBA provides this information "as is" with the understanding that it is not guaranteed to be accurate, correct or complete and conclusions drawn from such information are the responsibility of the user. While every effort is made to ensure the information displayed is as accurate and current as possible, EBA will not be held responsible for any loss, damage or inconvenience caused as a result of reliance on such information or data.



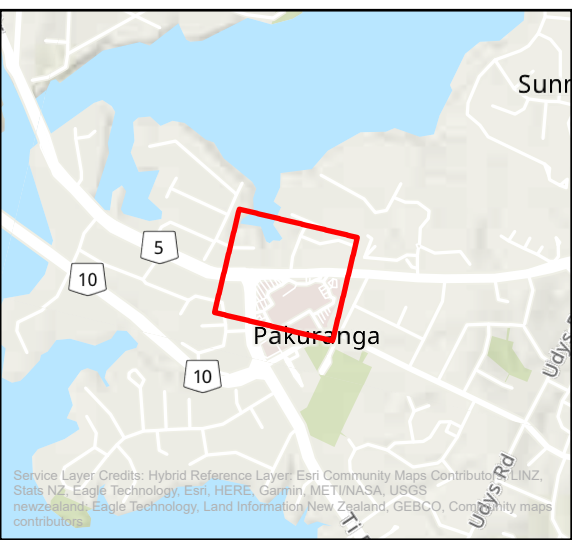
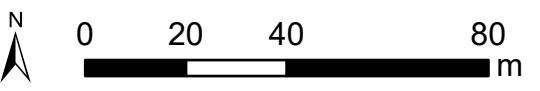


**Legend**

- Assessment Area
  - Road Centrelines
  - Safety Barriers
- PPF Footprints**
- Noise Levels, Do Minimum Scenario**
- 64 dB < LAeq(24h)
  - 64 dB ≤ LAeq(24h) < 67 dB
  - LAeq(24h) ≥ 67 dB
  - Other Buildings
- Noise Contours**
- Noise Level, dB LAeq**
- 55 dB ≤ LAeq(24h) < 60 dB
  - 60 dB ≤ LAeq(24h) < 65 dB
  - 65 dB ≤ LAeq(24h) < 70 dB
  - LAeq(24h) ≥ 70 dB

**EB2/EB3R Noise Contour Map  
Road Traffic Noise  
Do Minimum Scenario**

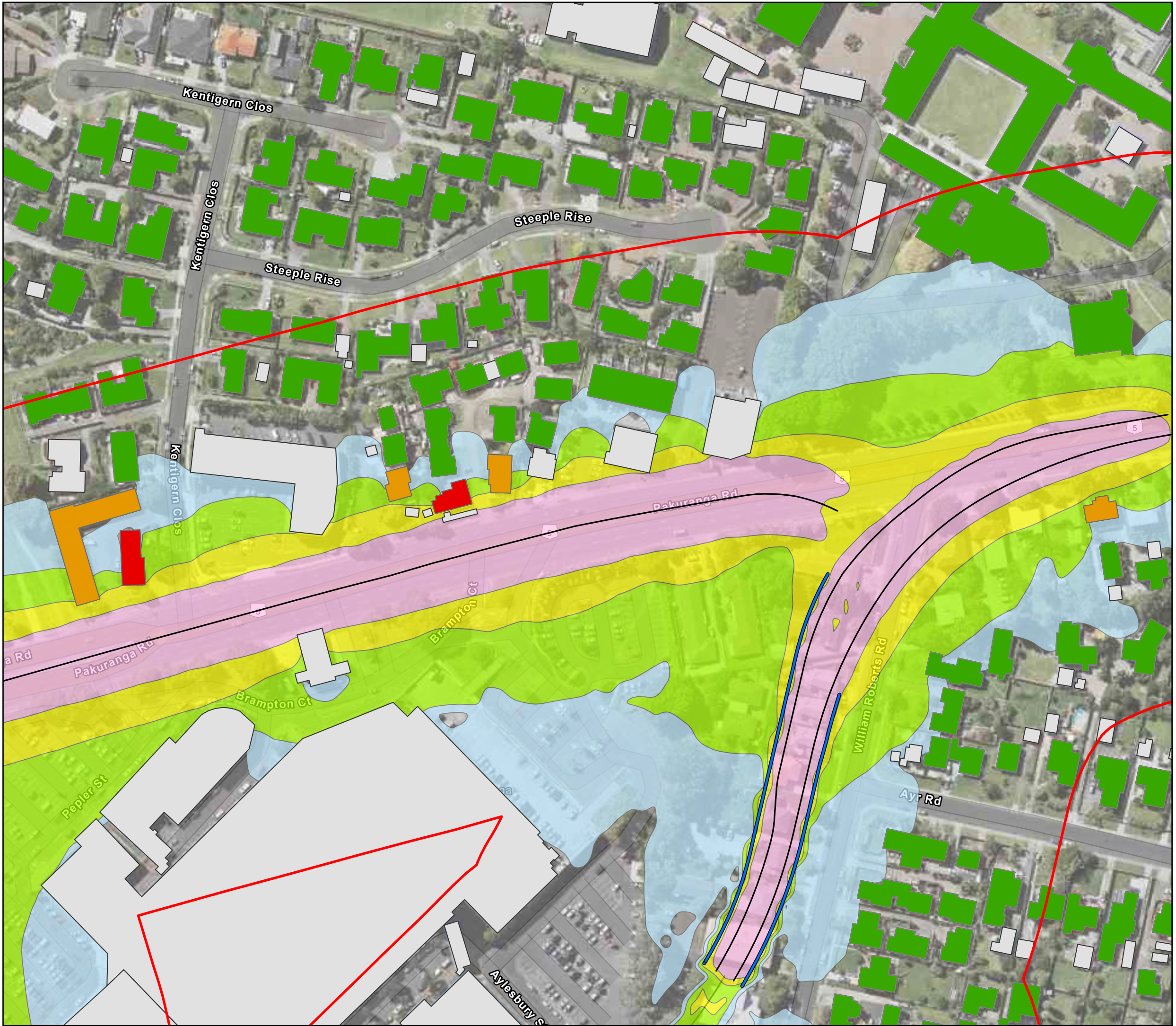
Page 6 of 19



Map Creation Date: 28/02/2022  
Author: Shivam Jakhu

This map is shown for reference purposes only. EBA provides this information "as is" with the understanding that it is not guaranteed to be accurate, correct or complete and conclusions drawn from such information are the responsibility of the user. While every effort is made to ensure the information displayed is as accurate and current as possible, EBA will not be held responsible for any loss, damage or inconvenience caused as a result of reliance on such information or data.





**Legend**

- Assessment Area
- Road Centrelines
- Safety Barriers

**PPF Footprints**

**Noise Levels, Do Minimum Scenario**

- 64 dB < LAeq(24h)
- 64 dB ≤ LAeq(24h) < 67 dB
- LAeq(24h) ≥ 67 dB
- Other Buildings

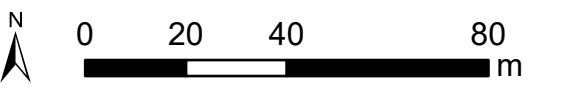
**Noise Contours**

**Noise Level, dB LAeq**

- 55 dB ≤ LAeq(24h) < 60 dB
- 60 dB ≤ LAeq(24h) < 65 dB
- 65 dB ≤ LAeq(24h) < 70 dB
- LAeq(24h) ≥ 70 dB

**EB2/EB3R Noise Contour Map**  
**Road Traffic Noise**  
**Do Minimum Scenario**

Page 7 of 19



Map Creation Date: 28/02/2022  
 Author: Shivam Jakhu

This map is shown for reference purposes only. EBA provides this information "as is" with the understanding that it is not guaranteed to be accurate, correct or complete and conclusions drawn from such information are the responsibility of the user. While every effort is made to ensure the information displayed is as accurate and current as possible, EBA will not be held responsible for any loss, damage or inconvenience caused as a result of reliance on such information or data.





**Legend**

- Assessment Area
- Road Centrelines
- Safety Barriers

**PPF Footprints**

**Noise Levels, Do Minimum Scenario**

- 64 dB < LAeq(24h)
- 64 dB ≤ LAeq(24h) < 67 dB
- Other Buildings

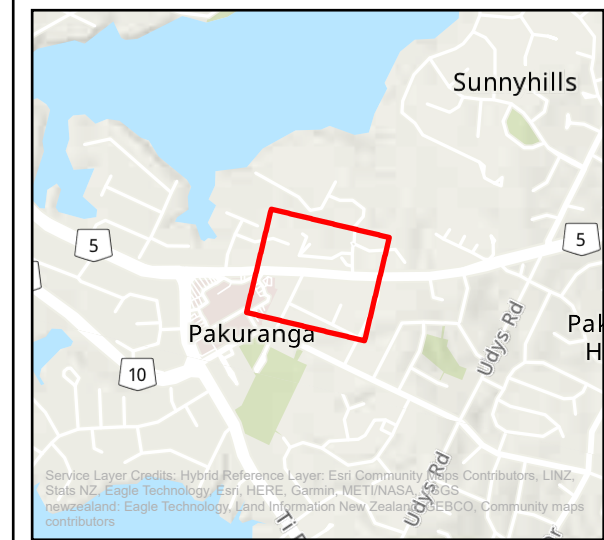
**Noise Contours**

Noise Level, dB LAeq

- 55 dB ≤ LAeq(24h) < 60 dB
- 60 dB ≤ LAeq(24h) < 65 dB
- 65 dB ≤ LAeq(24h) < 70 dB
- LAeq(24h) ≥ 70 dB

**EB2/EB3R Noise Contour Map**  
**Road Traffic Noise**  
**Do Minimum Scenario**

Page 8 of 19



Map Creation Date: 28/02/2022  
 Author: Shivam Jakhu

This map is shown for reference purposes only. EBA provides this information "as is" with the understanding that it is not guaranteed to be accurate, correct or complete and conclusions drawn from such information are the responsibility of the user. While every effort is made to ensure the information displayed is as accurate and current as possible, EBA will not be held responsible for any loss, damage or inconvenience caused as a result of reliance on such information or data.







**Legend**

- Assessment Area
- Road Centrelines
- Safety Barriers

**PPF Footprints**

**Noise Levels, Do Minimum Scenario**

- 64 dB < LAeq(24h)
- 64 dB ≤ LAeq(24h) < 67 dB
- LAeq(24h) ≥ 67 dB
- Other Buildings

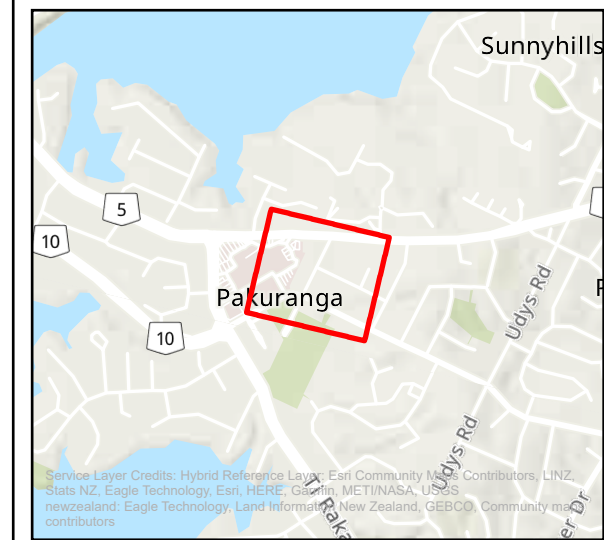
**Noise Contours**

Noise Level, dB LAeq

- 55 dB ≤ LAeq(24h) < 60 dB
- 60 dB ≤ LAeq(24h) < 65 dB
- 65 dB ≤ LAeq(24h) < 70 dB
- LAeq(24h) ≥ 70 dB

**EB2/EB3R Noise Contour Map**  
**Road Traffic Noise**  
**Do Minimum Scenario**

Page 9 of 19



Map Creation Date: 28/02/2022  
 Author: Shivam Jakhu

This map is shown for reference purposes only. EBA provides this information "as is" with the understanding that it is not guaranteed to be accurate, correct or complete and conclusions drawn from such information are the responsibility of the user. While every effort is made to ensure the information displayed is as accurate and current as possible, EBA will not be held responsible for any loss, damage or inconvenience caused as a result of reliance on such information or data.

**EA Eastern Busway Alliance**

Fletcher | Hacciona | AECOM | Jacobs





**Legend**

- Assessment Area
- Road Centrelines
- Safety Barriers

**PPF Footprints**

Noise Levels, Do Minimum Scenario

- 64 dB < LAeq(24h)
- Other Buildings

**Noise Contours**

Noise Level, dB LAeq

- 55 dB ≤ LAeq(24h) < 60 dB
- 60 dB ≤ LAeq(24h) < 65 dB
- 65 dB ≤ LAeq(24h) < 70 dB
- LAeq(24h) ≥ 70 dB

**EB2/EB3R Noise Contour Map**  
**Road Traffic Noise**  
**Do Minimum Scenario**

Page 10 of 19



Map Creation Date: 28/02/2022  
 Author: Shivam Jakhu

This map is shown for reference purposes only. EBA provides this information "as is" with the understanding that it is not guaranteed to be accurate, correct or complete and conclusions drawn from such information are the responsibility of the user. While every effort is made to ensure the information displayed is as accurate and current as possible, EBA will not be held responsible for any loss, damage or inconvenience caused as a result of reliance on such information or data.





**Legend**

- Assessment Area
- Road Centrelines
- Safety Barriers

**PPF Footprints**

**Noise Levels, Do Minimum Scenario**

- 64 dB < LAeq(24h)
- 64 dB ≤ LAeq(24h) < 67 dB
- Other Buildings

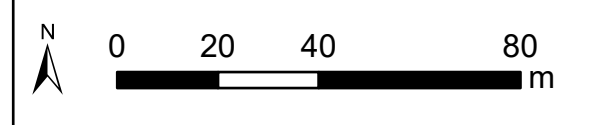
**Noise Contours**

Noise Level, dB LAeq

- 55 dB ≤ LAeq(24h) < 60 dB
- 60 dB ≤ LAeq(24h) < 65 dB
- 65 dB ≤ LAeq(24h) < 70 dB
- LAeq(24h) ≥ 70 dB

**EB2/EB3R Noise Contour Map**  
**Road Traffic Noise**  
**Do Minimum Scenario**

Page 11 of 19



Map Creation Date: 28/02/2022  
 Author: Shivam Jakhu

This map is shown for reference purposes only. EBA provides this information "as is" with the understanding that it is not guaranteed to be accurate, correct or complete and conclusions drawn from such information are the responsibility of the user. While every effort is made to ensure the information displayed is as accurate and current as possible, EBA will not be held responsible for any loss, damage or inconvenience caused as a result of reliance on such information or data.



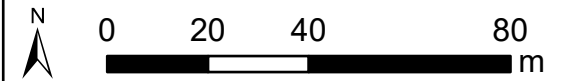


**Legend**

- Assessment Area
- Road Centrelines
- PPF Footprints**
- Noise Levels, Do Minimum Scenario**
- 64 dB < LAeq(24h)
- 64 dB ≤ LAeq(24h) < 67 dB
- Other Buildings
- Noise Contours**
- Noise Level, dB LAeq**
- 55 dB ≤ LAeq(24h) < 60 dB
- 60 dB ≤ LAeq(24h) < 65 dB
- 65 dB ≤ LAeq(24h) < 70 dB
- LAeq(24h) ≥ 70 dB

**EB2/EB3R Noise Contour Map  
Road Traffic Noise  
Do Minimum Scenario**

Page 12 of 19



Map Creation Date: 28/02/2022  
Author: Shivam Jakhu

This map is shown for reference purposes only. EBA provides this information "as is" with the understanding that it is not guaranteed to be accurate, correct or complete and conclusions drawn from such information are the responsibility of the user. While every effort is made to ensure the information displayed is as accurate and current as possible, EBA will not be held responsible for any loss, damage or inconvenience caused as a result of reliance on such information or data.





**Legend**

- Assessment Area
- Road Centrelines

**PPF Footprints**

**Noise Levels, Do Minimum Scenario**

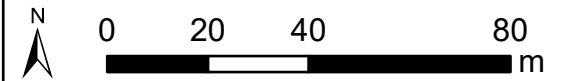
- 64 dB < LAeq(24h)
- 64 dB ≤ LAeq(24h) < 67 dB
- Other Buildings

**Noise Contours**

- Noise Level, dB LAeq
- 55 dB ≤ LAeq(24h) < 60 dB
  - 60 dB ≤ LAeq(24h) < 65 dB
  - 65 dB ≤ LAeq(24h) < 70 dB
  - LAeq(24h) ≥ 70 dB

**EB2/EB3R Noise Contour Map  
Road Traffic Noise  
Do Minimum Scenario**

Page 13 of 19



Map Creation Date: 28/02/2022  
Author: Shivam Jakhu

This map is shown for reference purposes only. EBA provides this information "as is" with the understanding that it is not guaranteed to be accurate, correct or complete and conclusions drawn from such information are the responsibility of the user. While every effort is made to ensure the information displayed is as accurate and current as possible, EBA will not be held responsible for any loss, damage or inconvenience caused as a result of reliance on such information or data.





**Legend**

- Assessment Area
- Road Centrelines

**PPF Footprints**

**Noise Levels, Do Minimum Scenario**

- 64 dB < LAeq(24h)
- 64 dB ≤ LAeq(24h) < 67 dB
- Other Buildings

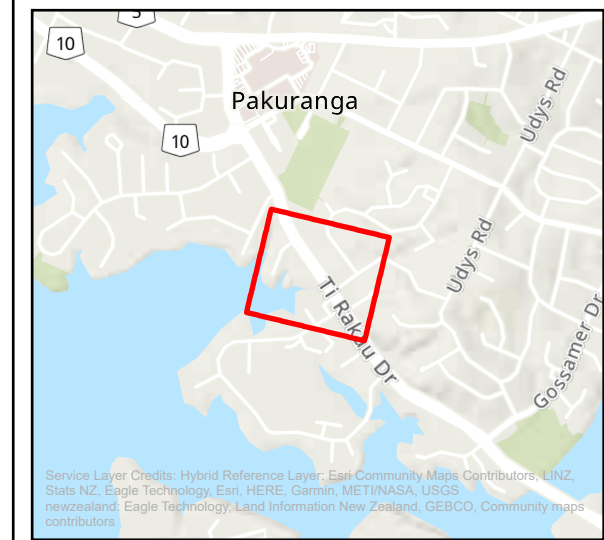
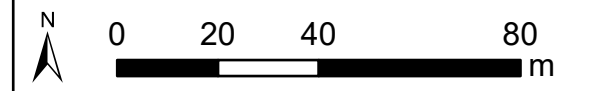
**Noise Contours**

**Noise Level, dB LAeq**

- 55 dB ≤ LAeq(24h) < 60 dB
- 60 dB ≤ LAeq(24h) < 65 dB
- 65 dB ≤ LAeq(24h) < 70 dB
- LAeq(24h) ≥ 70 dB

**EB2/EB3R Noise Contour Map**  
**Road Traffic Noise**  
**Do Minimum Scenario**

Page 14 of 19



Map Creation Date: 28/02/2022  
 Author: Shivam Jakhu

This map is shown for reference purposes only. EBA provides this information "as is" with the understanding that it is not guaranteed to be accurate, correct or complete and conclusions drawn from such information are the responsibility of the user. While every effort is made to ensure the information displayed is as accurate and current as possible, EBA will not be held responsible for any loss, damage or inconvenience caused as a result of reliance on such information or data.

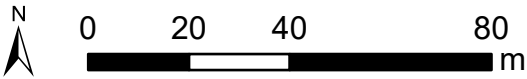




**Legend**

- Assessment Area
- Road Centrelines
- PPF Footprints**
- Noise Levels, Do Minimum Scenario**
- 64 dB < LAeq(24h)
- 64 dB ≤ LAeq(24h) < 67 dB
- LAeq(24h) ≥ 67 dB
- Other Buildings
- Noise Contours**
- Noise Level, dB LAeq**
- 55 dB ≤ LAeq(24h) < 60 dB
- 60 dB ≤ LAeq(24h) < 65 dB
- 65 dB ≤ LAeq(24h) < 70 dB
- LAeq(24h) ≥ 70 dB

**EB2/EB3R Noise Contour Map  
Road Traffic Noise  
Do Minimum Scenario**



Service Layer Credits: Hybrid Reference Layer: Esri Community Maps Contributors, LINZ, Stats NZ, Eagle Technology, Esri, HERE, Garmin, METI/NASA, USGS, newzealand: Eagle Technology, Land Information New Zealand, GEBCO, Community maps contributors

Map Creation Date: 28/02/2022  
Author: Shivam Jakhu

This map is shown for reference purposes only. EBA provides this information "as is" with the understanding that it is not guaranteed to be accurate, correct or complete and conclusions drawn from such information are the responsibility of the user. While every effort is made to ensure the information displayed is as accurate and current as possible, EBA will not be held responsible for any loss, damage or inconvenience caused as a result of reliance on such information or data.