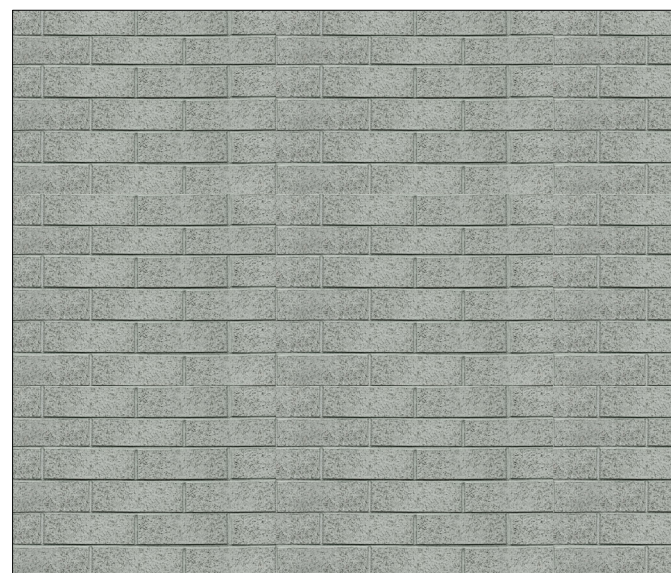


BUILDING B03

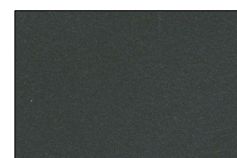


A3 AUSTRAL ARTISAN RANGE BRICK SILVER OR SIMILAR (230 x 110 x 76)

MAIN BRICK COLOUR



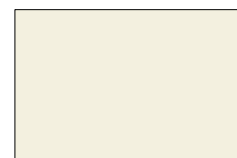
A MONIER ORIGIN RANGE BRICK CREVOLE OR SIMILAR (230 x 110 x 76)



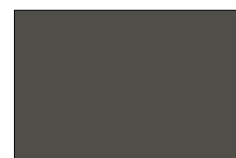
B MATERIAL: ALUMINIUM JOINERY FINISH: POWDERCOAT DULUX METRO ELECTRIC COW MATT OR SIMILAR



B1 MATERIAL: GLAZING SPANDREL FINISH: BACK PAINTED TO RESENE BOKARA GREY OR SIMILAR



C MATERIAL: SOLID PLASTER FINISH: TINTED TO RESENE BIANCA OR SIMILAR



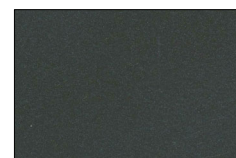
C1 MATERIAL: SOLID PLASTER FINISH: TINTED TO RESENE QUARTER IRONSAND OR SIMILAR



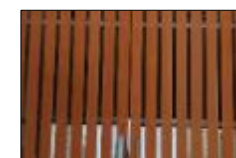
D1 MATERIAL: SOFFIT - FIBRE CEMENT FINISH: RESENE HALF SURRENDER OR SIMILAR



E MATERIAL: FASCIA - FIBRE CEMENT FINISH: RESENE HALF STACK OR SIMILAR



F MATERIAL: ALUMINIUM BALUSTRADE FINISH: DULUX POWDERCOAT METRO ELECTRIC COW MATT OR SIMILAR



G MATERIAL: COMPOSITE SCREEN FINISH: FUTUREWOOD WALNUT OR SIMILAR

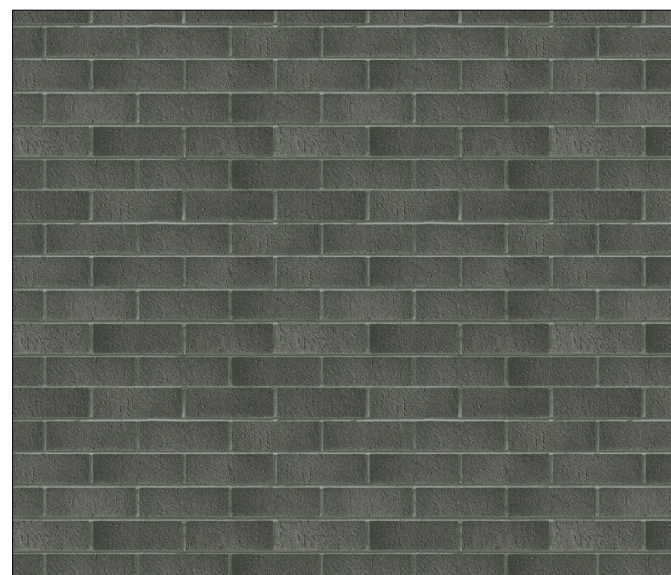


H MATERIAL: METAL CLADDING FINISH: DURALLOY MATT DARK GREY OR SIMILAR



I MATERIAL: EPDM MEMBRANE ROOFING FINISH: GREY OR SIMILAR

BUILDING B04

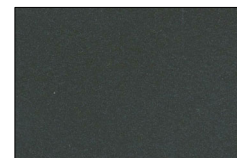


A4 AUSTRAL ORIGIN RANGE BRICK CHIFFON OR SIMILAR (230 x 110 x 76)

MAIN BRICK COLOUR



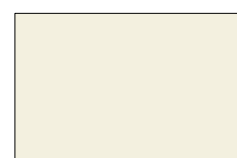
A MONIER ORIGIN RANGE BRICK CREVOLE OR SIMILAR (230 x 110 x 76)



B MATERIAL: ALUMINIUM JOINERY FINISH: POWDERCOAT DULUX METRO ELECTRIC COW MATT OR SIMILAR



B1 MATERIAL: GLAZING SPANDREL FINISH: BACK PAINTED TO RESENE BOKARA GREY OR SIMILAR



C MATERIAL: SOLID PLASTER FINISH: TINTED TO RESENE BIANCA OR SIMILAR



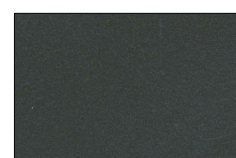
C1 MATERIAL: SOLID PLASTER FINISH: TINTED TO RESENE QUARTER IRONSAND OR SIMILAR



D1 MATERIAL: SOFFIT - FIBRE CEMENT FINISH: RESENE HALF SURRENDER OR SIMILAR



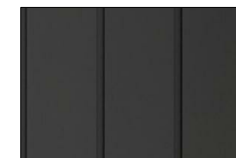
E MATERIAL: FASCIA - FIBRE CEMENT FINISH: RESENE HALF STACK OR SIMILAR



F MATERIAL: ALUMINIUM BALUSTRADE FINISH: DULUX POWDERCOAT METRO ELECTRIC COW MATT OR SIMILAR



G MATERIAL: COMPOSITE SCREEN FINISH: FUTUREWOOD WALNUT OR SIMILAR



H MATERIAL: METAL CLADDING FINISH: DURALLOY MATT DARK GREY OR SIMILAR



I MATERIAL: EPDM MEMBRANE ROOFING FINISH: GREY OR SIMILAR

FOR INFORMATION
NOT FOR CONSTRUCTION

No.	Revision	By	Chk	Appd	Date
A	FOR ASSESSMENT	MJK	NZE	AOM	04.02.20



Original Scale (A1)	Design	AOM	13.09.19
1 : 1	Drawn	MJK	13.09.19
Reduced Scale (A3)	Dwg Verifier	LH	13.09.19
Half A1	Dwg Check	NZE	13.09.19



Client: **Kohimarama Retirement Village**
223 Kohimarama Road - 7 John Rymer Place

Title: **Exterior Material and Finishes**

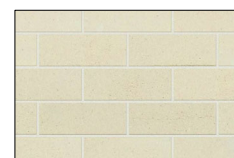
Discipline	Architecture
Drawing No.	044-ASM-S01-.A2-011
Rev.	A

BUILDING B05

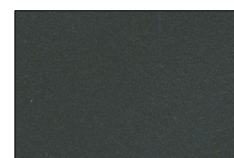


A5 AUSTRAL ARTISAN RANGE BRICK
RAGLAN OR SIMILAR
(230 x 110 x 76)

MAIN BRICK COLOUR



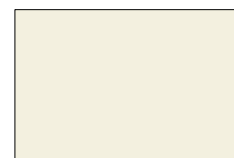
A MONIER ORIGIN RANGE BRICK
CREVOLE OR SIMILAR
(230 x 110 x 76)



B MATERIAL: ALUMINIUM JOINERY
FINISH: POWDERCOAT DULUX
METRO ELECTRIC COW MATT OR
SIMILAR



B1 MATERIAL: GLAZING SPANDREL
FINISH: BACK PAINTED TO RESENE
BOKARA GREY OR SIMILAR



C MATERIAL: SOLID PLASTER
FINISH: TINTED TO RESENE
BIANCA OR SIMILAR



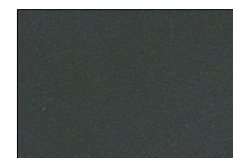
C1 MATERIAL: SOLID PLASTER
FINISH: TINTED TO RESENE
QUARTER IRONSAND OR
SIMILAR



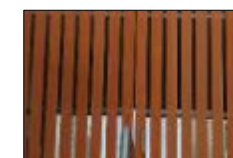
D2 MATERIAL: SOFFIT - FIBRE
CEMENT
FINISH: RESENE SURRENDER OR
SIMILAR



E MATERIAL: FASCIA - FIBRE
CEMENT
FINISH: RESENE HALF STACK OR
SIMILAR



F MATERIAL: ALUMINIUM
BALUSTRADE
FINISH: DULUX POWDERCOAT
METRO ELECTRIC COW MATT OR
SIMILAR



G MATERIAL: COMPOSITE SCREEN
FINISH: FUTUREWOOD WALNUT
OR SIMILAR

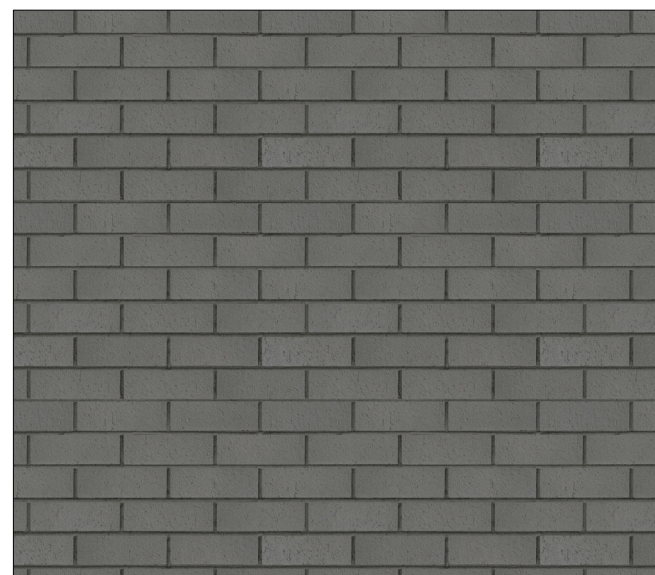


H MATERIAL: METAL CLADDING
FINISH: DURALLOY MATT DARK
GREY OR SIMILAR



I MATERIAL: EPDM MEMBRANE
ROOFING FINISH: GREY OR
SIMILAR

BUILDING B06

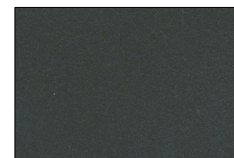


A1 AUSTRAL INDUSTRY RANGE BRICK
TITANIUM OR SIMILAR
(230 x 110 x 76)

MAIN BRICK COLOUR



A MONIER ORIGIN RANGE BRICK
CREVOLE OR SIMILAR
(230 x 110 x 76)



B MATERIAL: ALUMINIUM JOINERY
FINISH: POWDERCOAT DULUX
METRO ELECTRIC COW MATT
OR SIMILAR



B1 MATERIAL: GLAZING SPANDREL
FINISH: BACK PAINTED TO
RESENE BOKARA GREY OR
SIMILAR



C MATERIAL: SOLID PLASTER
FINISH: TINTED TO RESENE
BIANCA OR SIMILAR



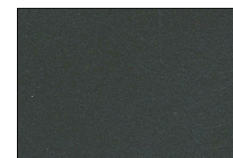
C1 MATERIAL: SOLID PLASTER
FINISH: TINTED TO RESENE
QUARTER IRONSAND OR
SIMILAR



D2 MATERIAL: SOFFIT - FIBRE CEMENT
FINISH: RESENE SURRENDER OR
SIMILAR



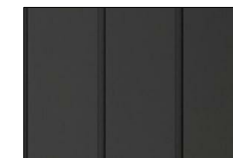
E MATERIAL: FASCIA - FIBRE CEMENT
FINISH: RESENE HALF STACK OR
SIMILAR



F MATERIAL: ALUMINIUM
BALUSTRADE
FINISH: DULUX POWDERCOAT
METRO ELECTRIC COW MATT
OR SIMILAR



G MATERIAL: COMPOSITE SCREEN
FINISH: FUTUREWOOD WALNUT
OR SIMILAR



H MATERIAL: METAL CLADDING
FINISH: DURALLOY MATT DARK
GREY OR SIMILAR



I MATERIAL: EPDM MEMBRANE
ROOFING FINISH: GREY OR
SIMILAR

FOR INFORMATION
NOT FOR CONSTRUCTION

No.	Revision	By	Chk	Appd	Date
A	FOR ASSESSMENT	MJK	NZE	AOM	04.02.20



Original Scale (A1)	Design	AOM	13.09.19
1 : 1	Drawn	MJK	13.09.19
Reduced Scale (A3)	Dwg Verifier	LH	13.09.19
Half A1	Dwg Check	NZE	13.09.19

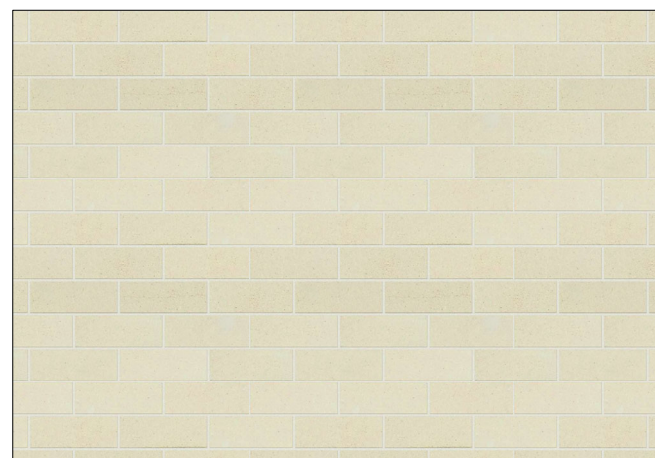


Client: **Kohimarama Retirement Village**
223 Kohimarama Road - 7 John Rymer Place

Title: **Exterior Material and Finishes**

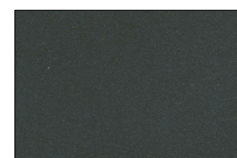
Discipline	Architecture
Drawing No.	044-ASM-S01-.A2-012
Rev.	A

BUILDING B07



A MONIER ORIGIN RANGE BRICK
CREVOLE OR SIMILAR
(230 x 110 x 76)

MAIN BRICK COLOUR



B MATERIAL: ALUMINIUM JOINERY
FINISH: POWDERCOAT DULUX
METRO ELECTRIC COW MATT OR
SIMILAR



I MATERIAL: EPDM MEMBRANE
ROOFING FINISH: GREY OR
SIMILAR



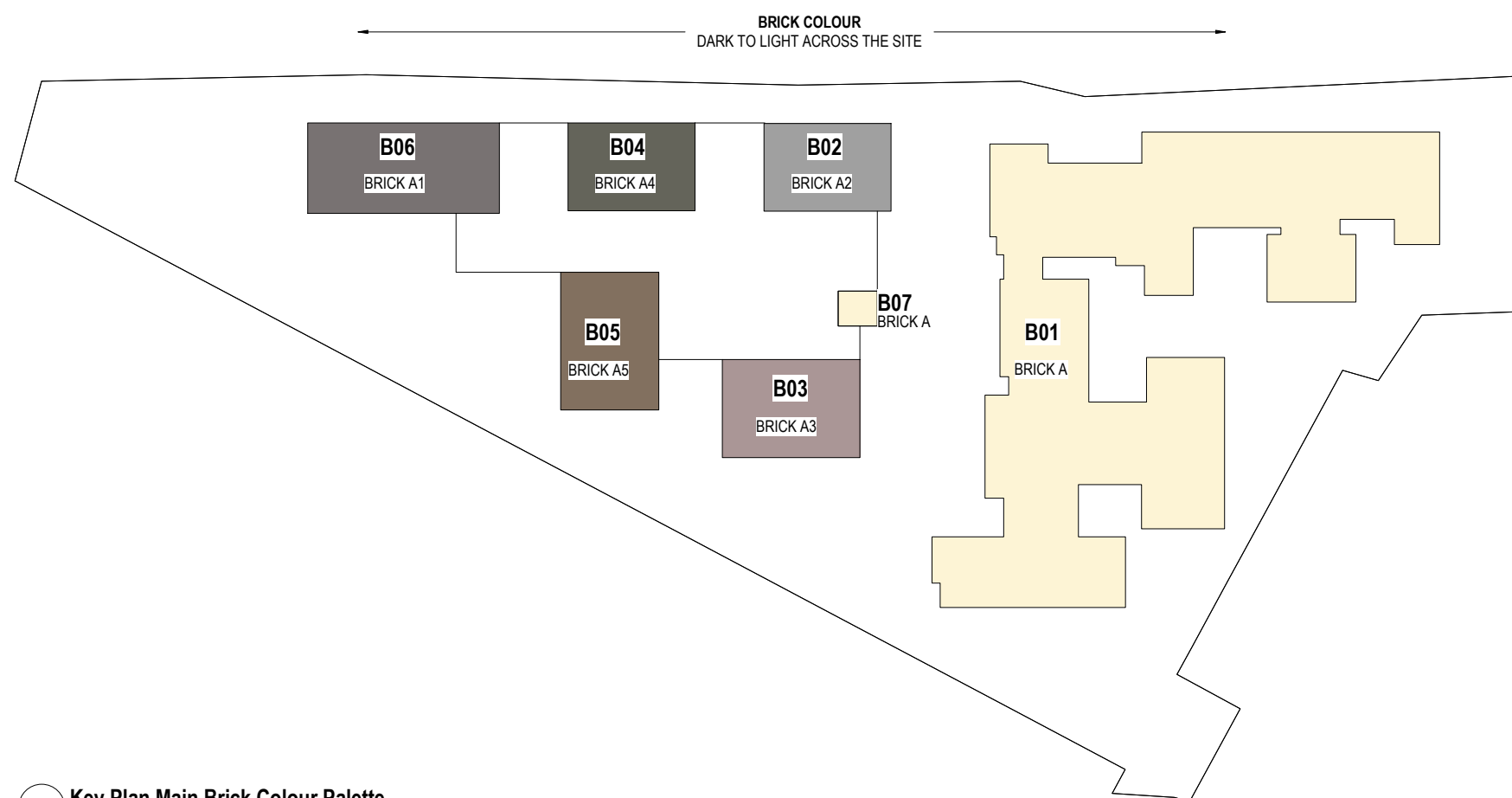
B1 MATERIAL: GLAZING SPANDREL
FINISH: BACK PAINTED TO
RESENE BOKARA GREY OR
SIMILAR



C1 MATERIAL: SOLID PLASTER
FINISH: TINTED TO RESENE
QUARTER IRONSAND OR
SIMILAR



G MATERIAL: COMPOSITE SCREEN
FINISH: FUTUREWOOD WALNUT
OR SIMILAR



Key Plan Main Brick Colour Palette
A1 sheet scale = 1 : 750

FOR INFORMATION
NOT FOR CONSTRUCTION

No.	Revision	By	Chk	Appd	Date
A	FOR ASSESSMENT	MJK	NZE	AOM	04.02.20



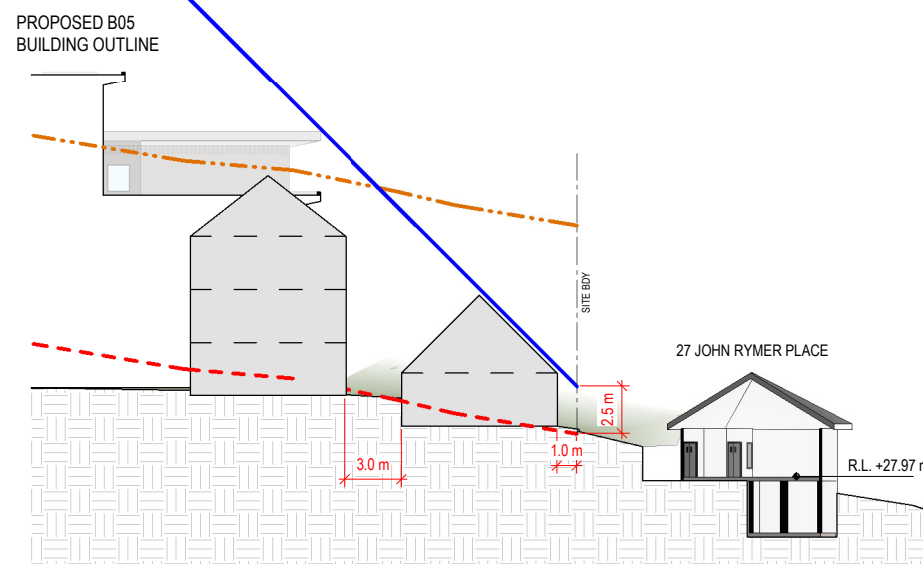
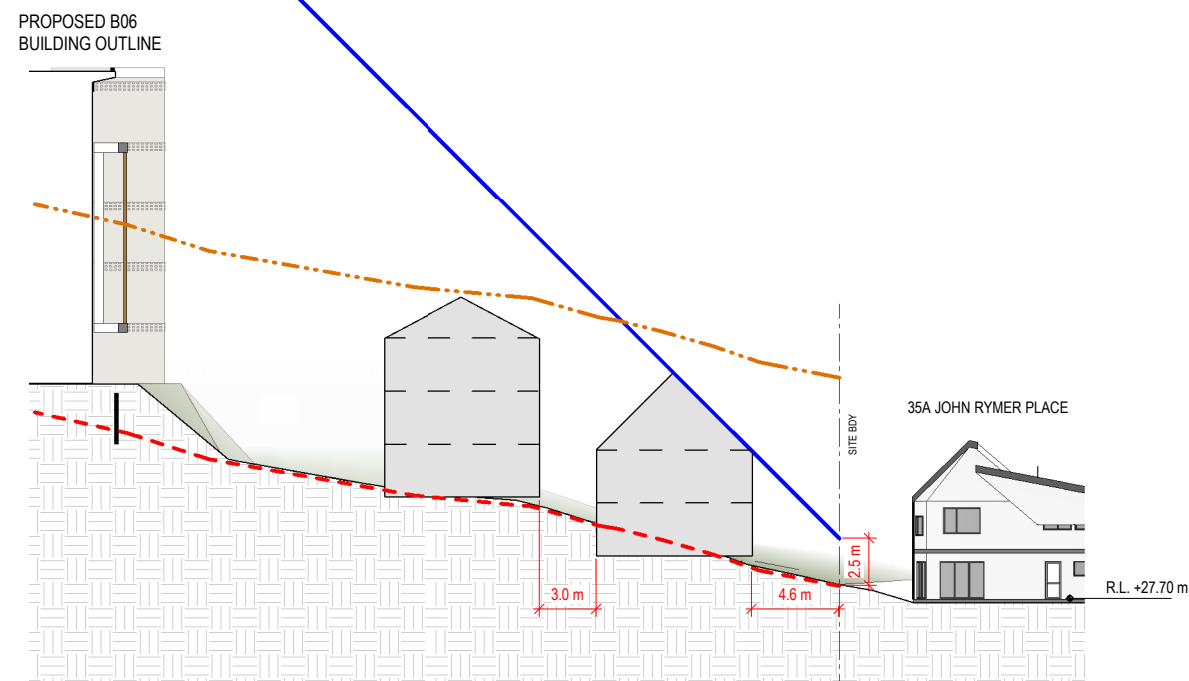
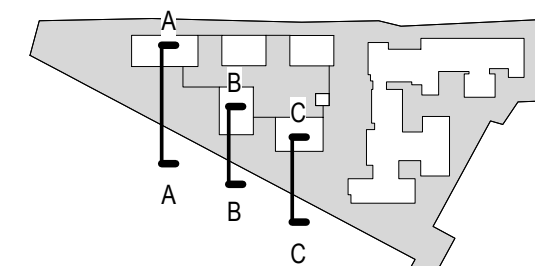
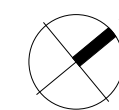
Original Scale (A1)	Design	AOM	13.09.19
As indicated	Drawn	MJK	13.09.19
Reduced Scale (A3)	Dwg Verifier	LH	13.09.19
Half A1	Dwg Check	NZE	13.09.19



Client: **RYMAN HEALTHCARE LTD**
Project: Kohimarama Retirement Village
223 Kohimarama Road - 7 John Rymer Place

Title: Exterior Material and Finishes

Discipline	Architecture
Drawing No.	044-ASM-S01-.A2-013
Rev.	A

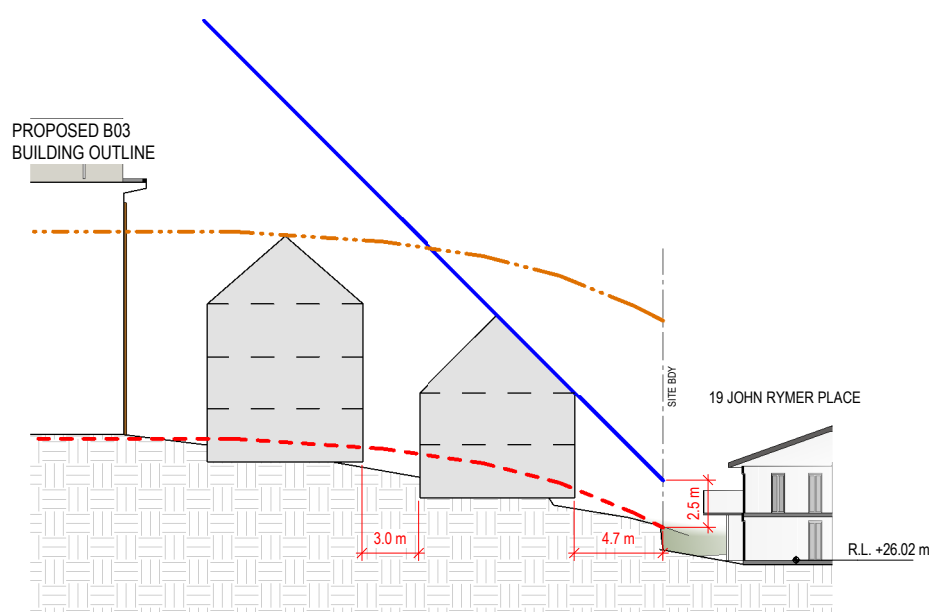


A Compliant Development Section A

A0-010 A1 sheet scale = 1:200

B Compliant Development Section B

A0-010 A1 sheet scale = 1:200



C Compliant Development Section C

A0-010 A1 sheet scale = 1:200

LEGEND

- - - 11m PERMITTED BUILDING HEIGHT
- - - EXISTING GROUND LEVEL
- HEIGHT RECESSION PLANE
- COMPLIANT DEVELOPMENT BUILDING OUTLINE
- COMPLIANT DEVELOPMENT BUILDING FLOOR LEVEL
- PROPOSED BUILDING OUTLINE

FOR INFORMATION
NOT FOR CONSTRUCTION

No.	Revision	By	Chk	Appd	Date
A	FOR ASSESSMENT	MJK	NZE	AOM	04.02.20



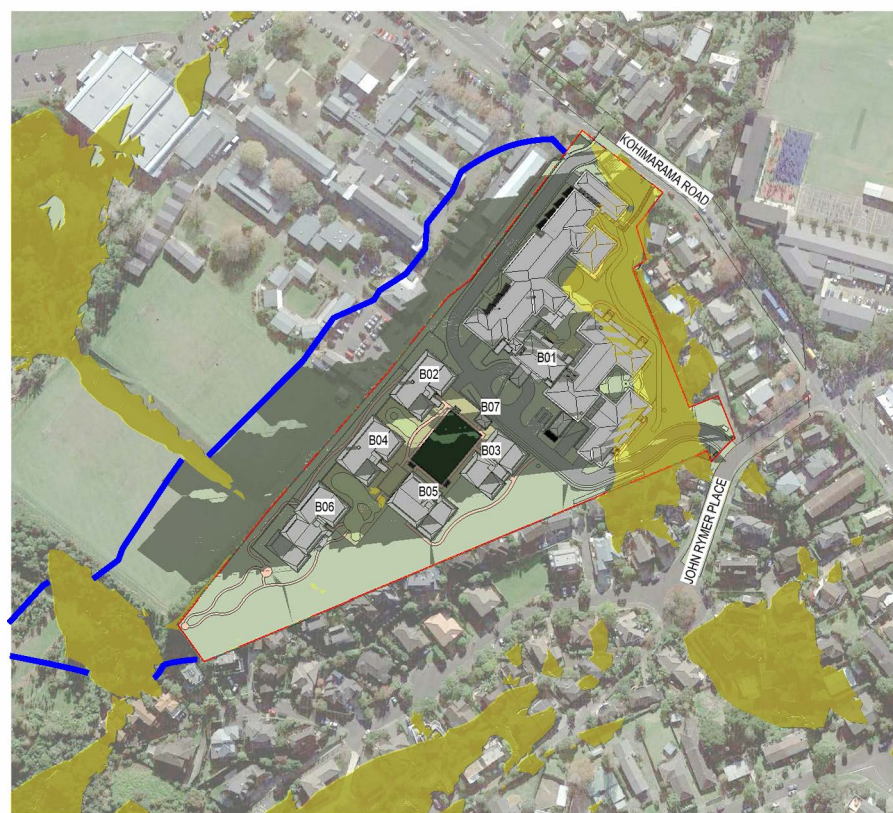
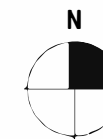
Original Scale (A1)	Design	AOM	13.09.19
As indicated	Drawn	MJK	13.09.19
Reduced Scale (A3)	Dwg Verifier	LH	13.09.19
Half A1	Dwg Check	NZE	13.09.19



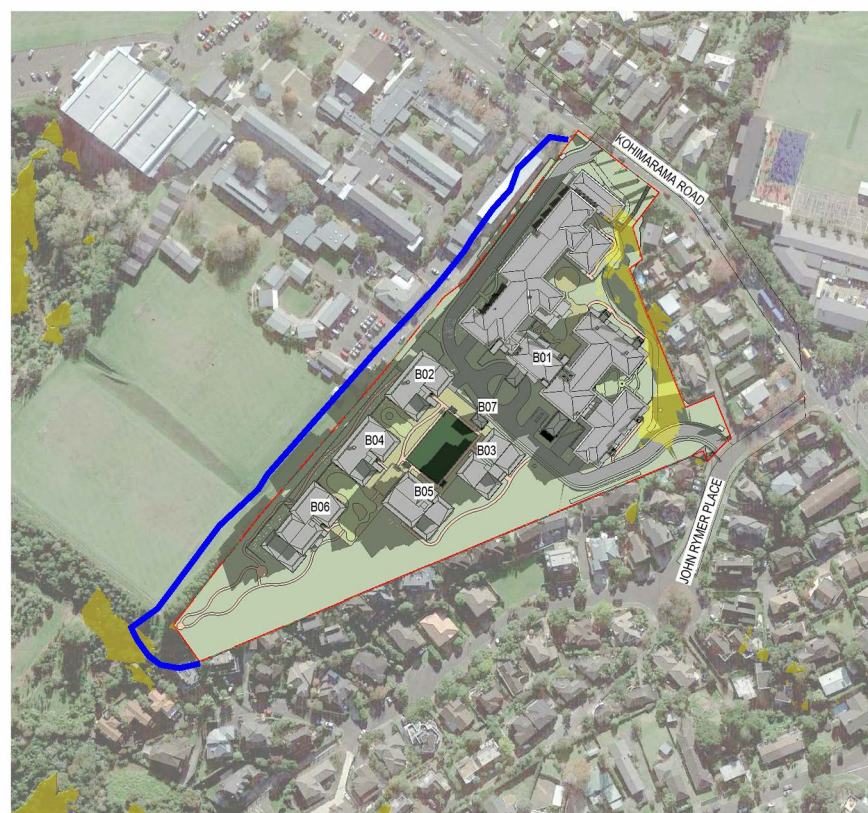
Client: **Kohimarama Retirement Village**
223 Kohimarama Road - 7 John Rymer Place

Title: **Hypothetical Compliant Development**

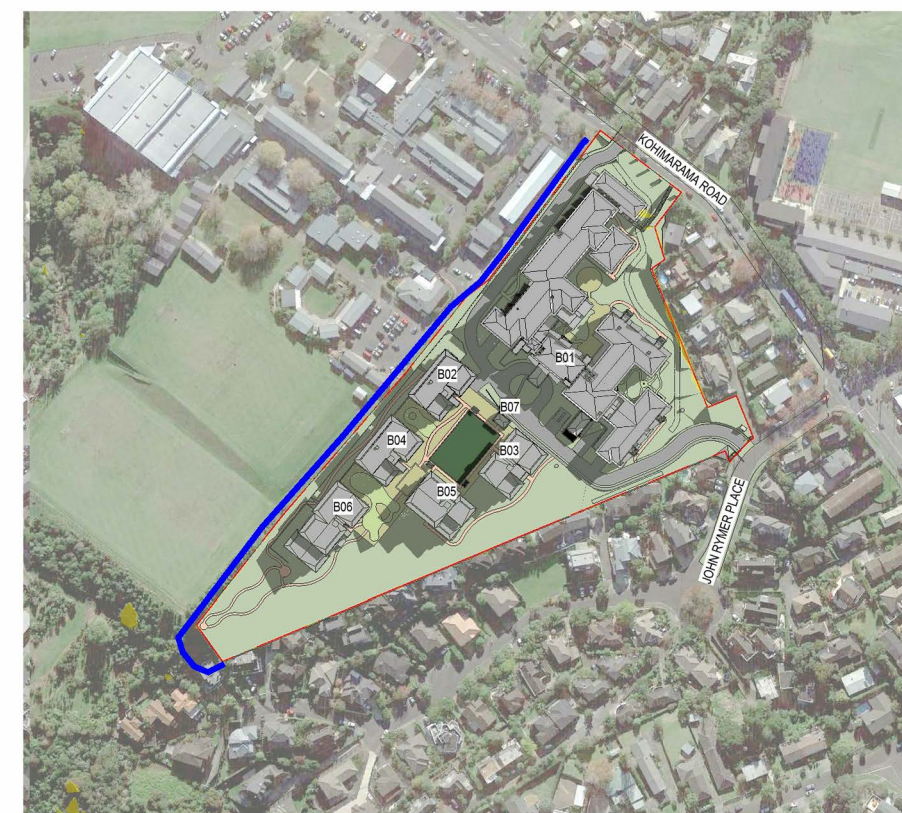
Discipline	Architecture
Drawing No.	044-ASM-S01-.A2-020
Rev.	A



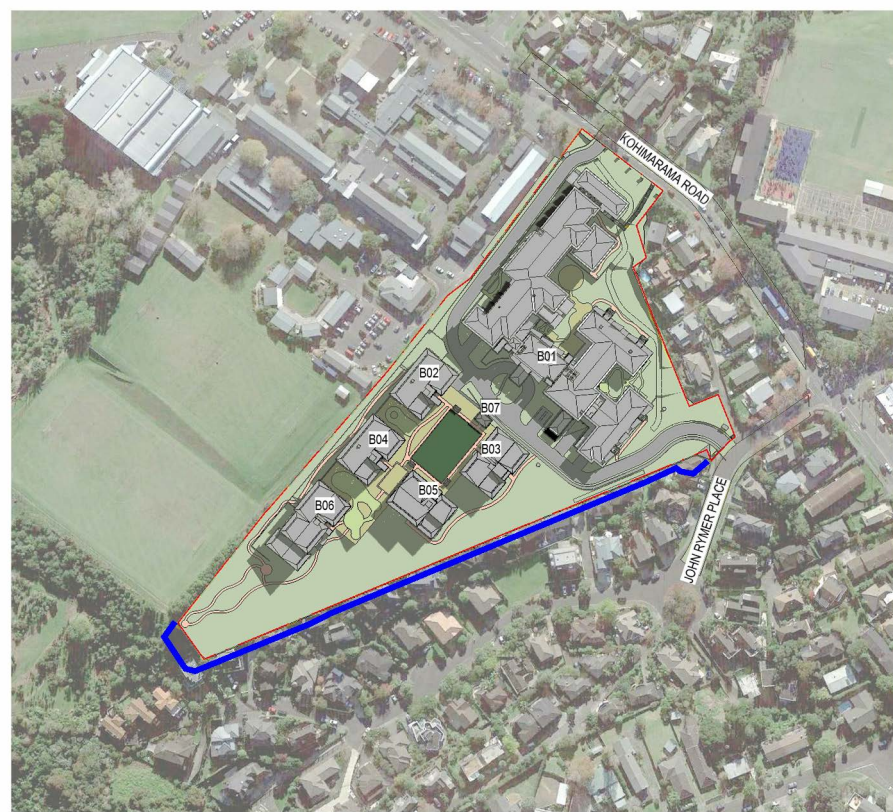
1 Shadow Study 23 September 2018 0700
A1 sheet scale = 1 : 2000



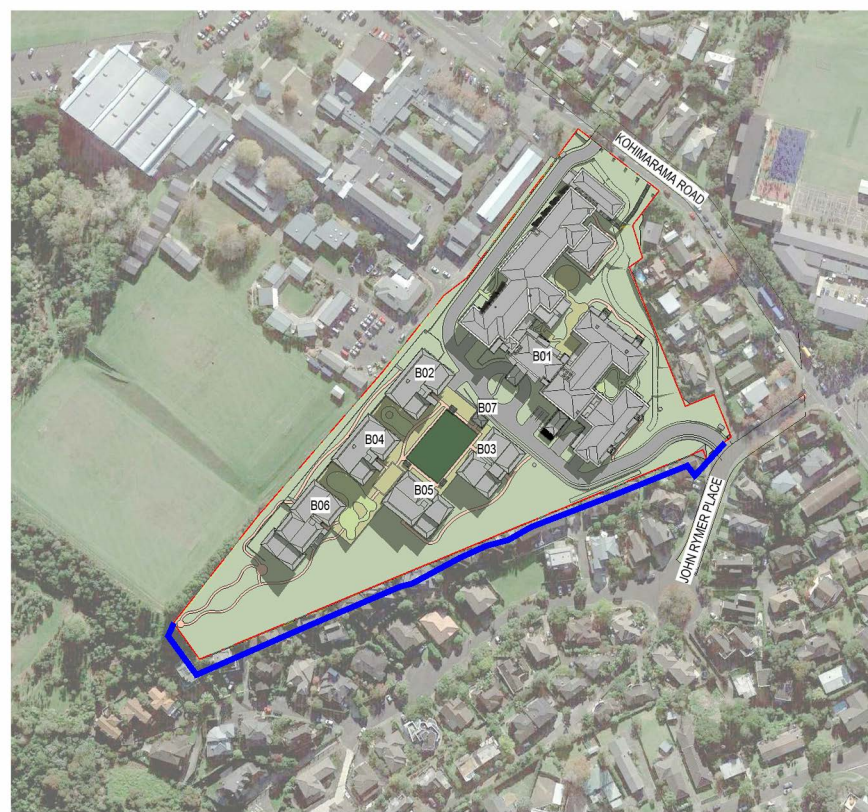
2 Shadow Study 23 September 2018 0800
A1 sheet scale = 1 : 2000



3 Shadow Study 23 September 2018 0900
A1 sheet scale = 1 : 2000



4 Shadow Study 23 September 2018 1000
A1 sheet scale = 1 : 2000



5 Shadow Study 23 September 2018 1100
A1 sheet scale = 1 : 2000

SUNRISE TIME: 6:09 AM
SUNSET TIME: 6:17 PM

LEGEND

- Proposed building shadow extent
- Height standard shadow extent
- Existing site shadow extent

FOR INFORMATION
NOT FOR CONSTRUCTION

No.	Revision	By	Chk	Appd	Date
A	FOR ASSESSMENT	MJK	NZE	AOM	04.02.20



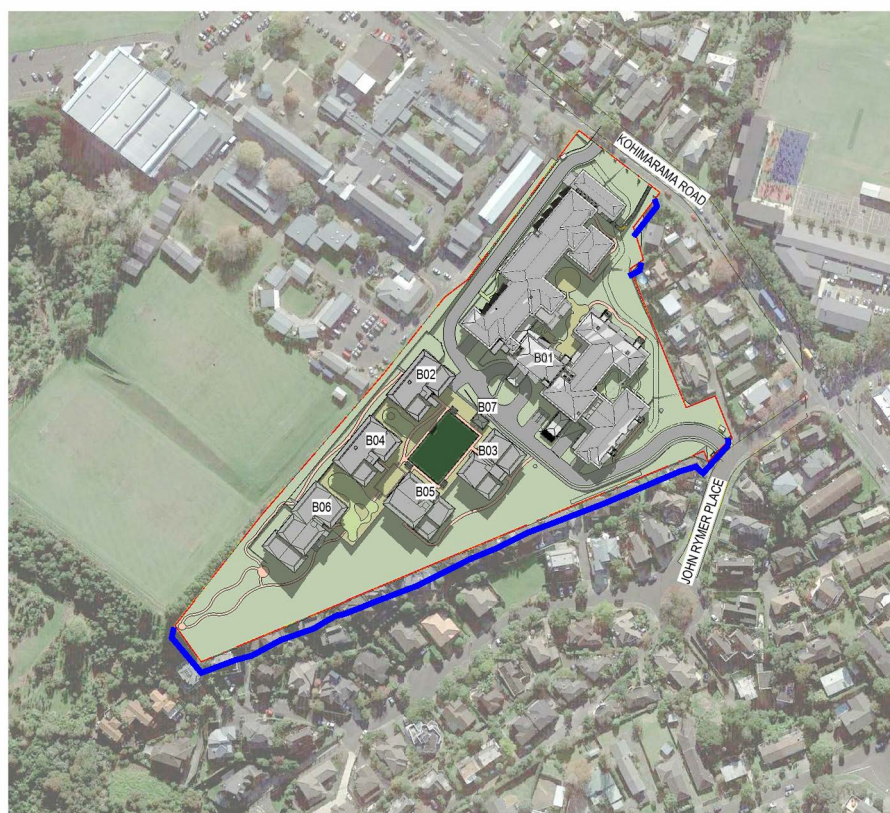
Original Scale (A1)	Design	AOM	13.09.19
As Indicated	Drawn	MJK	13.09.19
Revised Scale (A3)	Day Verifier	LH	13.09.19
Half A1	Dwg Check	NZE	13.09.19



Client: **Kohimarama Retirement Village**
223 Kohimarama Road - 7 John Rymer Place

Title: **Shadow Studies - September**

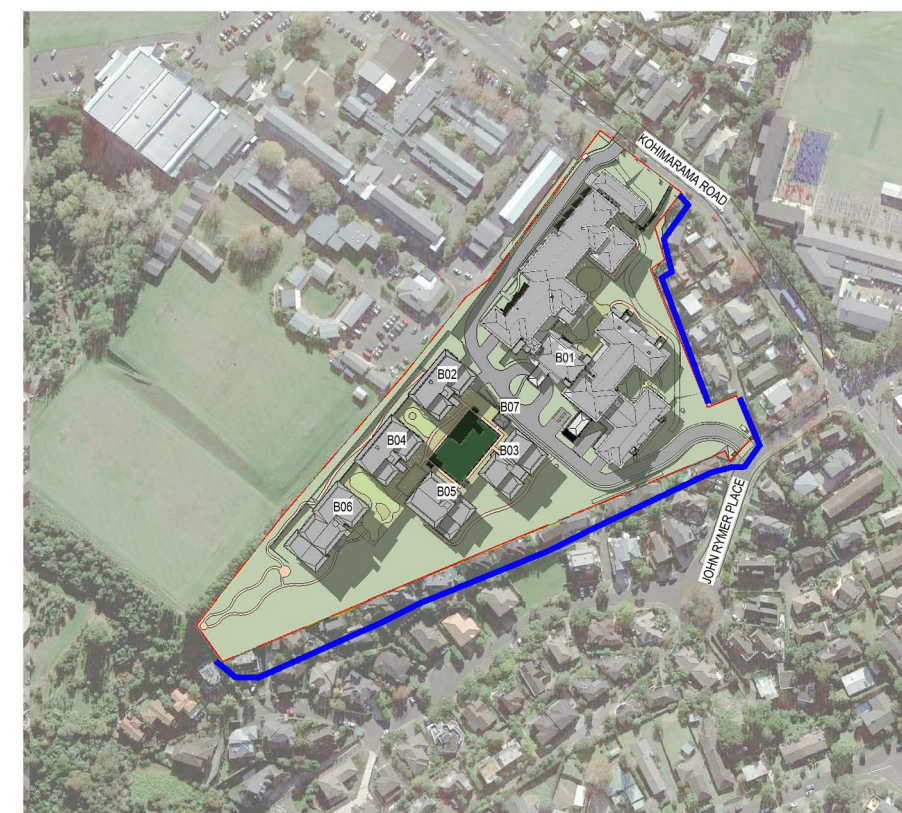
Discipline	Architecture
Drawing No.	044-ASM-S01-A4-010
Rev	A



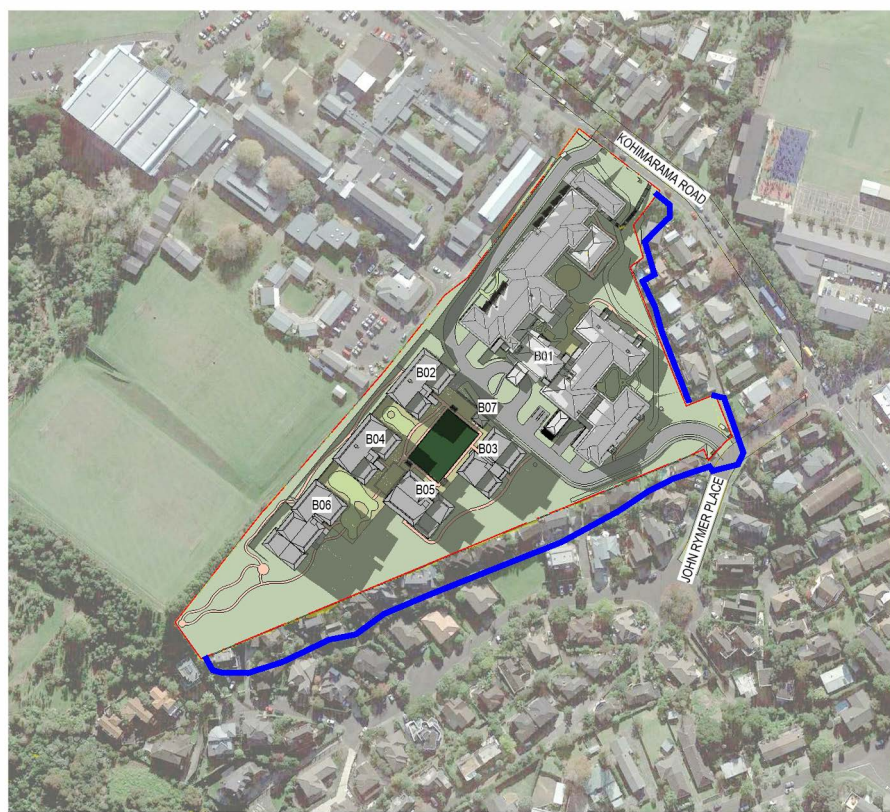
6 Shadow Study 23 September 2018 1200
A1 sheet scale = 1 : 2000



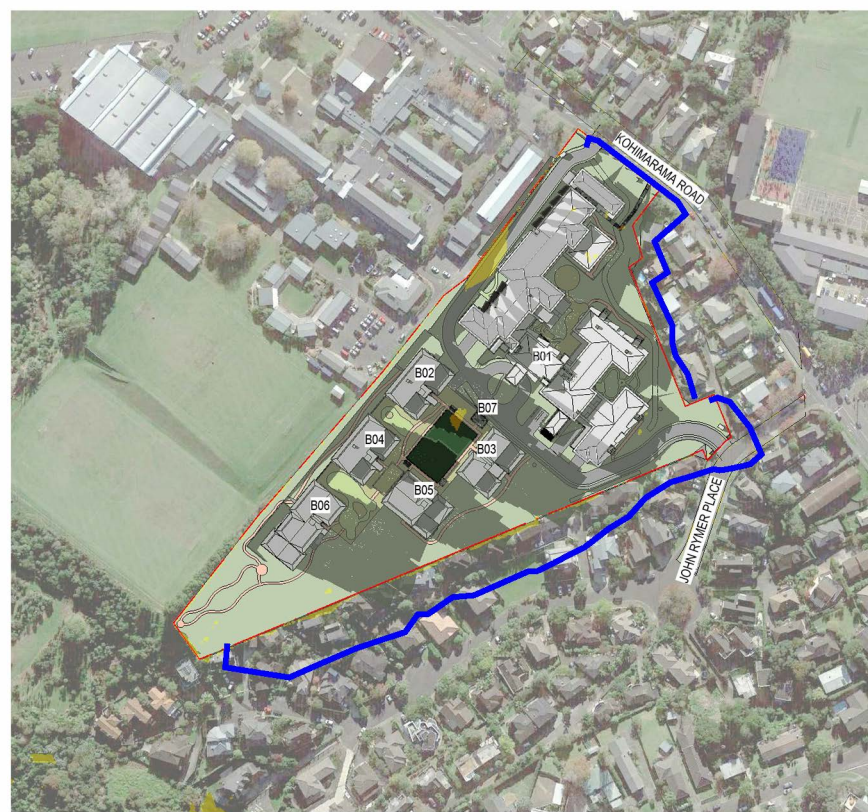
7 Shadow Study 23 September 2018 1300
A1 sheet scale = 1 : 2000



8 Shadow Study 23 September 2018 1400
A1 sheet scale = 1 : 2000



9 Shadow Study 23 September 2018 1500
A1 sheet scale = 1 : 2000



10 Shadow Study 23 September 2018 1600
A1 sheet scale = 1 : 2000

SUNRISE TIME: 6:09 AM
SUNSET TIME: 6:17 PM

LEGEND

- Proposed building shadow extent
- Height standard shadow extent
- Existing site shadow extent

FOR INFORMATION
NOT FOR CONSTRUCTION

No.	Revision	By	Chk	Apprs	Date
A	FOR ASSESSMENT	MJK	NZE	AOM	04.02.20



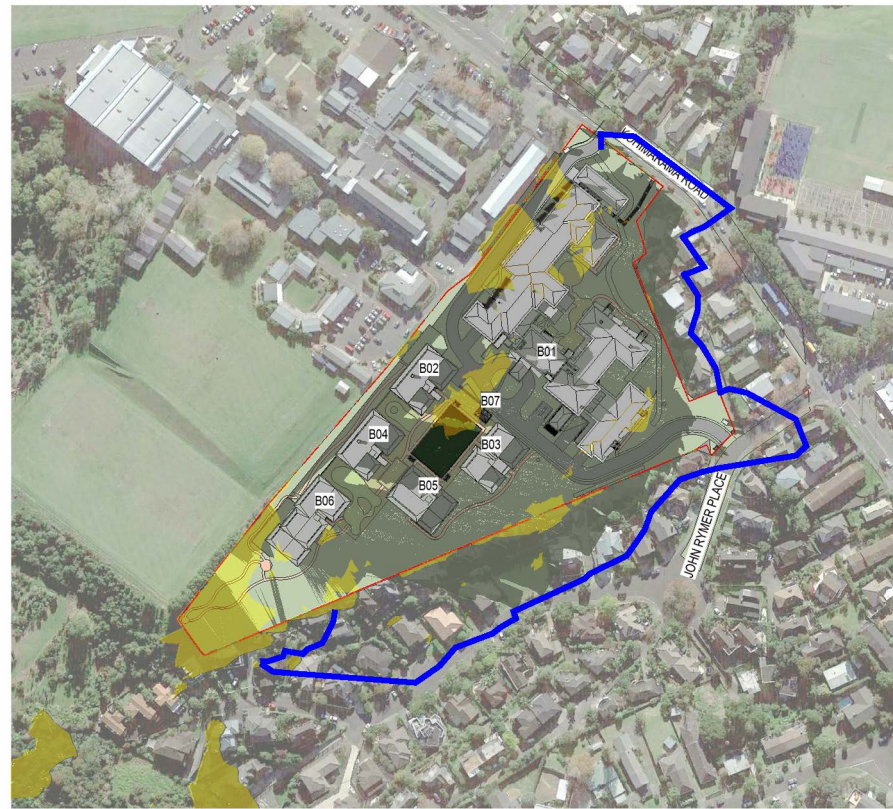
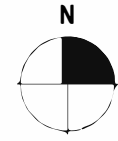
Original Scale (A1)	Design	AOM	13.09.19
As Indicated	Drawn	MJK	13.09.19
Revised Scale (A3)	Design Checker	LH	13.09.19
Half A1	Dwg Check	NZE	13.09.19



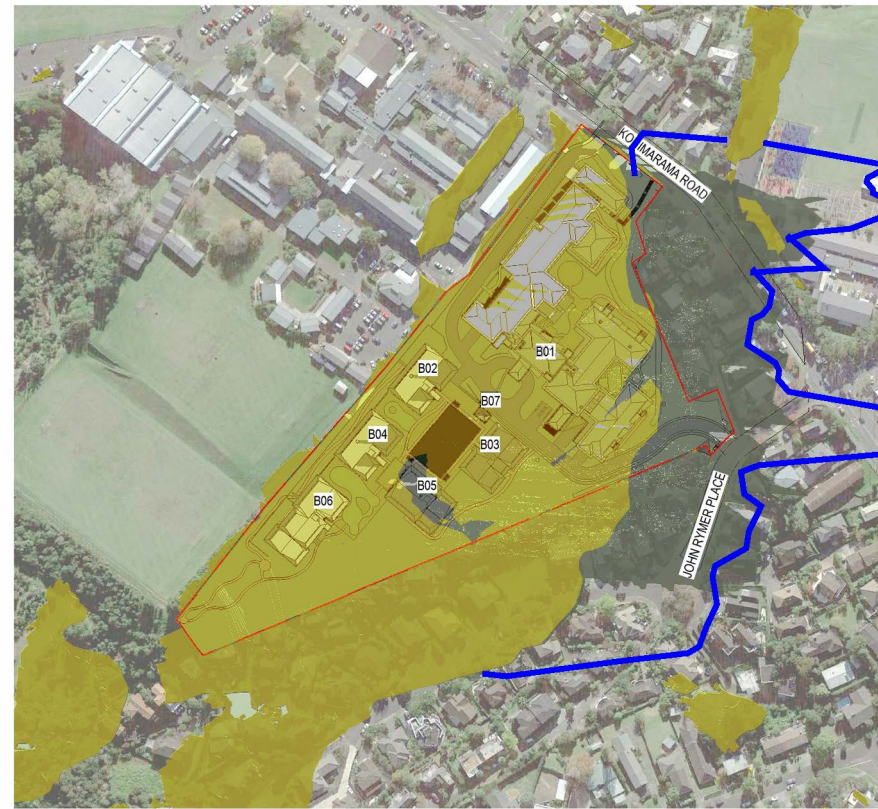
Project: Kohimarama Retirement Village
223 Kohimarama Road - 7 John Rymer Place

Title: Shadow Studies - September

Discipline	Architecture
Drawing No.	044-ASM-S01-A4-011
Rev	A



11 Shadow Study 23 September 2018 1700
A1 sheet scale = 1:2000



12 Shadow Study 23 September 2018 1745
A1 sheet scale = 1:2000

SUNRISE TIME: 6:09 AM
SUNSET TIME: 6:17 PM

LEGEND

- Proposed building shadow extent
- Height standard shadow extent
- Existing site shadow extent

No.	Revision	By	Chk	Appd	Date
A	FOR ASSESSMENT	MJK	NZE	AOM	04.02.20



Original Scale (A1)	Design	AOM	13.09.19
As indicated	Drawn	MJK	13.09.19
Reduced Scale (A3)	Day Verifier	LH	13.09.19
Half A1	Draw Check	NZE	13.09.19

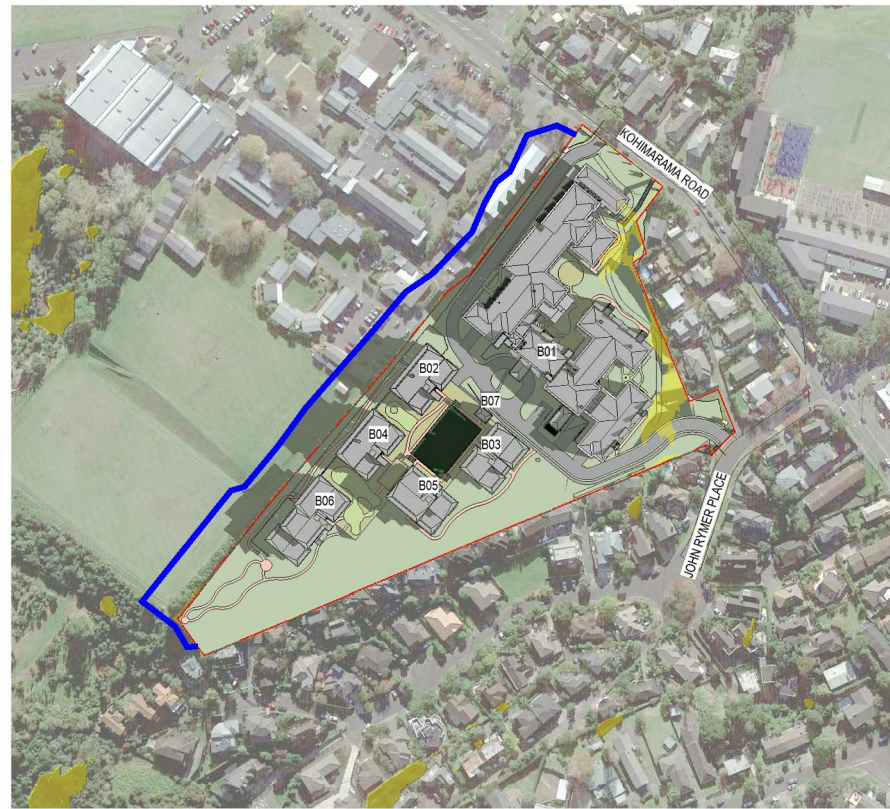
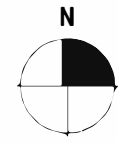


Client: **Kohimarama Retirement Village**
223 Kohimarama Road - 7 John Rymer Place

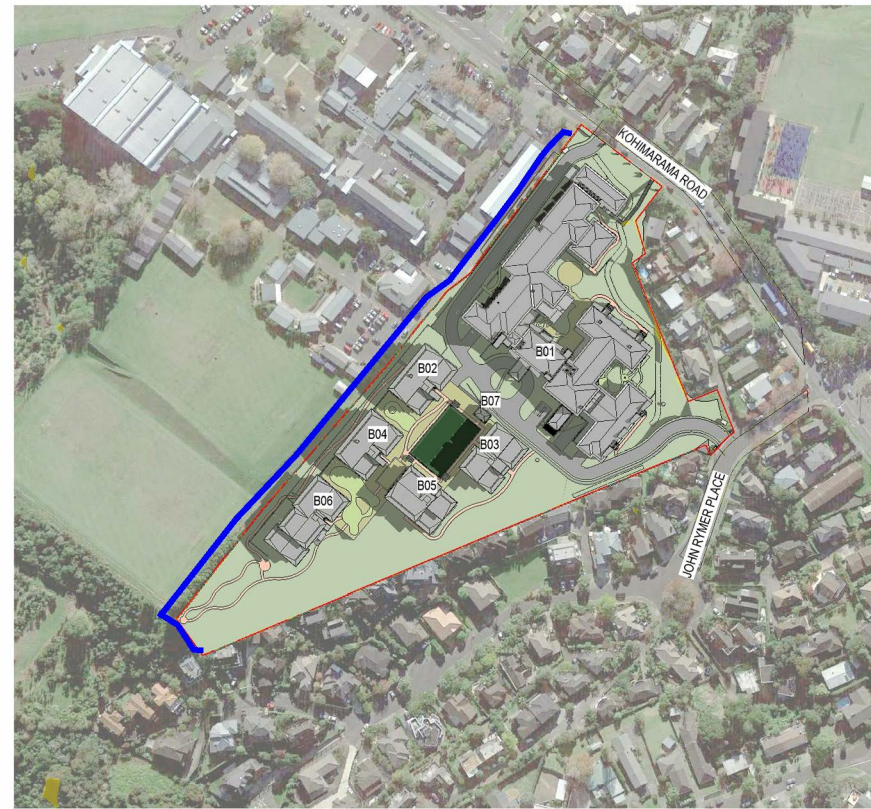
Title: **Shadow Studies - September**

FOR INFORMATION
NOT FOR CONSTRUCTION

Discipline	Architecture
Drawing No.	044-ASM-S01-A4-012
Rev	A



1 Shadow Study 22 December 2018 0700
A1 sheet scale = 1 : 2000



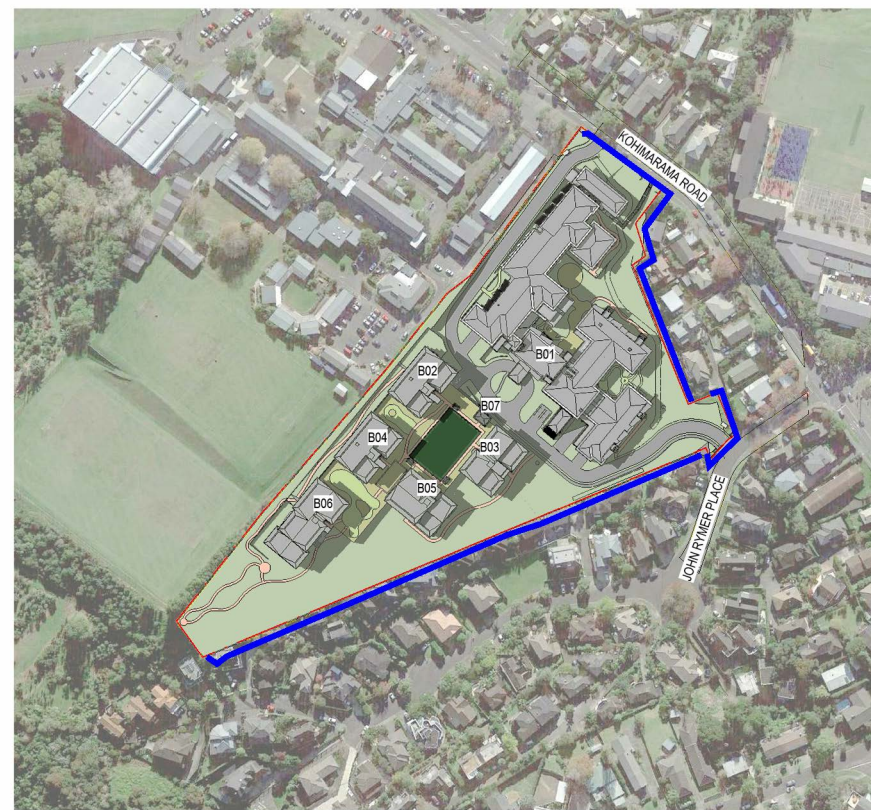
2 Shadow Study 22 December 2018 0800
A1 sheet scale = 1 : 2000



3 Shadow Study 22 December 2018 1000
A1 sheet scale = 1 : 2000



4 Shadow Study 22 December 2018 1200
A1 sheet scale = 1 : 2000



5 Shadow Study 22 December 2018 1500
A1 sheet scale = 1 : 2000

SUNRISE TIME: 5:58 AM
SUNSET TIME: 8:40 PM

LEGEND

- Proposed building shadow extent
- Height standard shadow extent
- Existing site shadow extent

FOR INFORMATION
NOT FOR CONSTRUCTION

No.	Revision	By	Chk	Apprs	Date
A	FOR ASSESSMENT	MJK	NZE	AOM	04.02.20



Original Scale (A1)	Design	AOM	13.09.19
As indicated	Drawn	MJK	13.09.19
Reduced	Day Verifier	LH	13.09.19
Scale (A3)	Draw Check	NZE	13.09.19
Half A1			



Client: **Kohimarama Retirement Village**
223 Kohimarama Road - 7 John Rymer Place

Title: **Shadow Studies - December**

Discipline	Architecture
Drawing No.	044-ASM-S01-A4-013
Rev	A