

**MANUKAU**  
**CONSULTANTS**  
 CONSULTANTS  
 L.L.B.L.L.

Consulting Civil & Structural Engineers, Geotechnical Ltd. Project Management, Contract Documentation & Supervision, Surveying.

Telephone (09) 262 8999  
 Fax (09) 262 8131

TITLE

**NORANA ROAD  
 WATER SAMPLING LOCATIONS**

REV CPOX

REV

	SIGNED	DATE
DRAWN	D. Londer	07/11
CHECKED	A. Robinson	07/11
P.L. APPROVED		
D.		

X

6083 m<sup>2</sup>

DP 55287

Lot 118

60R

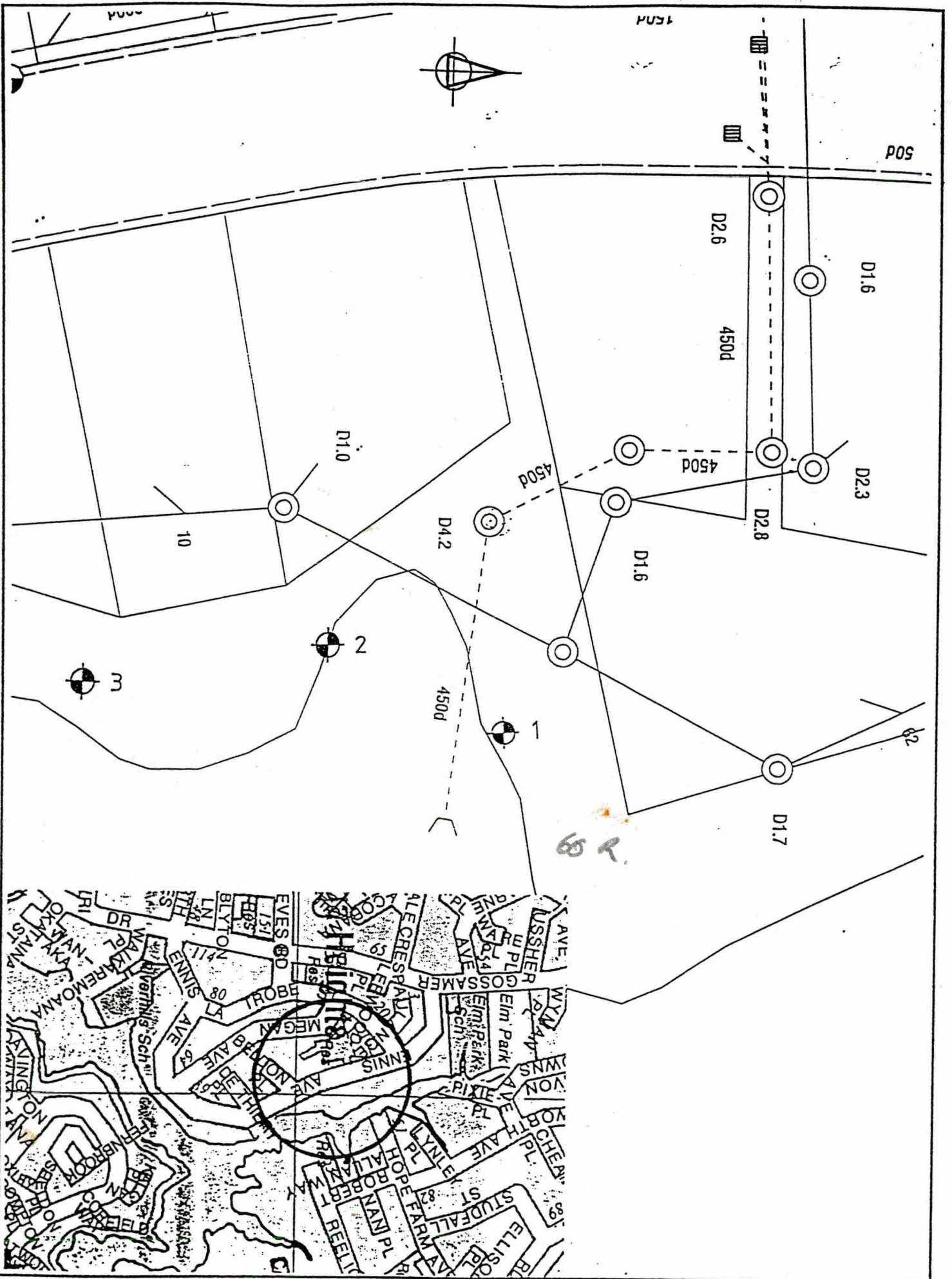
61k

9k

~~11.5, 26.27~~

234, 246, 36c, 37a

TP



**MANUKAU CONSULTANTS LIMITED**  
 Consulting Civil & Structural Engineers  
 Geotechnical Ltd. Project Management, Contract Documentation & Supervision, Surveying.  
 Telephone (06) 262 8011  
 Fax (06) 262 8131

TITLE  
**ENNIS AVE WATER SAMPLING LOCATIONS**  
 REV. CHR.

	SIGNED	DATE
DRAWN	D. Lander	02/98
CHECKED	A. Robinson	01/98
ALL APPROVED		
PLAN NO. 20		

REV.

Blk.  
of

sk.  
~~44, 56, 57,~~  
~~68, 80~~

TP  
5a, 5b.

PT Allot 68

SD 251 29

x

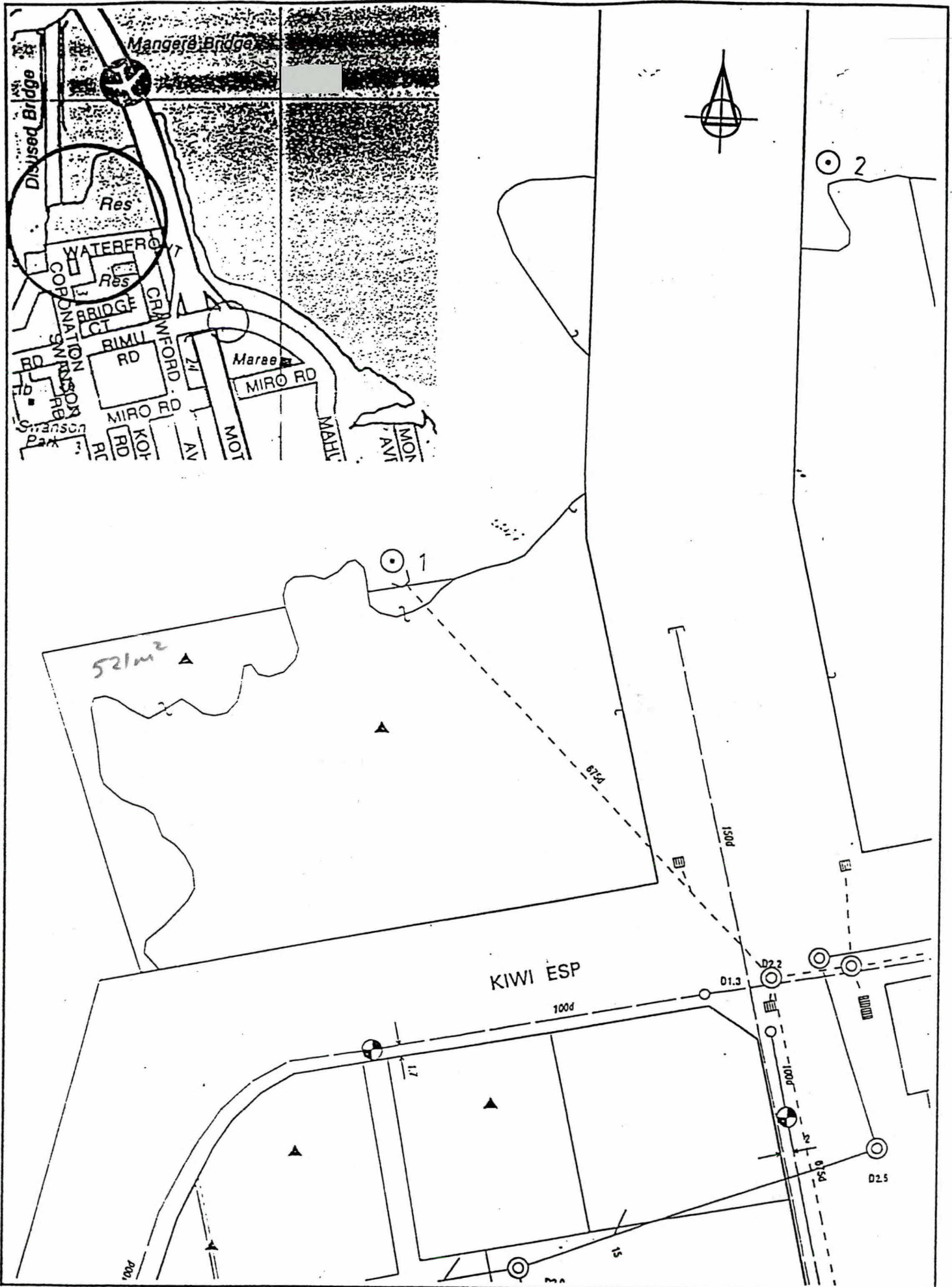
Village of Mongre

PT

SD 42353

521m<sup>2</sup>

Δ ✓

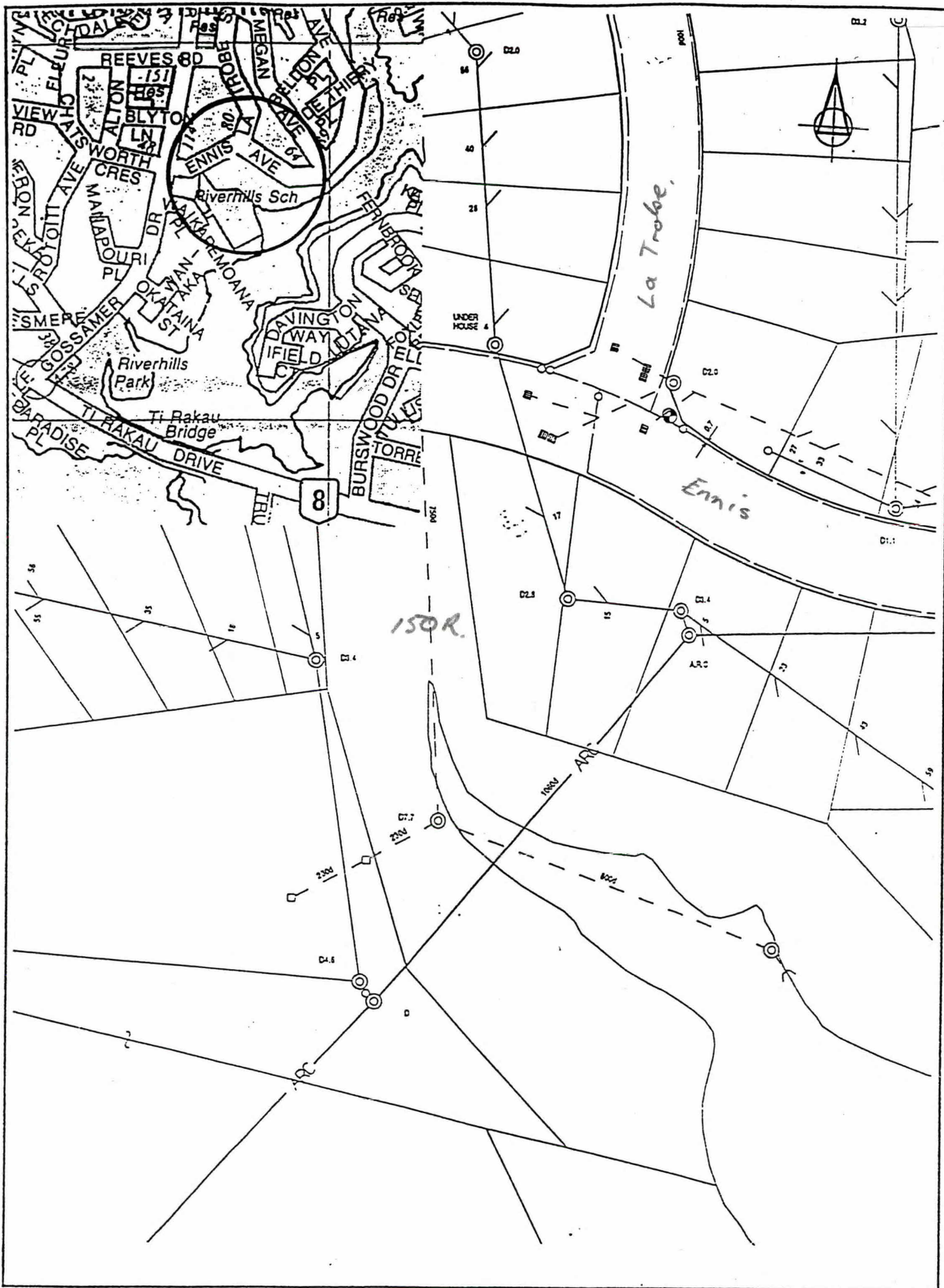


**MANOKAU**  
**CONSULTANTS**  
 Consulting Civil & Structural Engineers  
 Geotechnical Lab.  
 Project Management  
 Contract Administration & Supervision  
 Surveying  
 Telephone (09) 282 8999  
 Fax (09) 282 5137

TITLE  
**KIWI ESPLANADE  
 WATER SAMPLING LOCATIONS**

REV. REV. CHK

	SIGNED	DATE
DRAWN	D. Lander	02/98
CHECKED	A. Robinson	07/98
P.L.C. APPROVED		
<b>PLAN NO. 21</b>		



**MANUKAU CONSULTANTS LIMITED**  
 Consulting Civil & Structural Engineers,  
 Commercial Ltd. Project Management, Contract Documentation & Supervision, Surveying.  
 Telephone (06) 262 8999  
 Fax (06) 262 5121

TITLE  
**RIVERHILLS SCHOOL  
 WATER SAMPLING LOCATIONS**  
 REV. CHK.

SCALE:		DATE:
DRAWN	G. Lander	02/98
CHECKED	A. Robinson	02/98
M.C. APPROVED		
PLAN NO. 22		

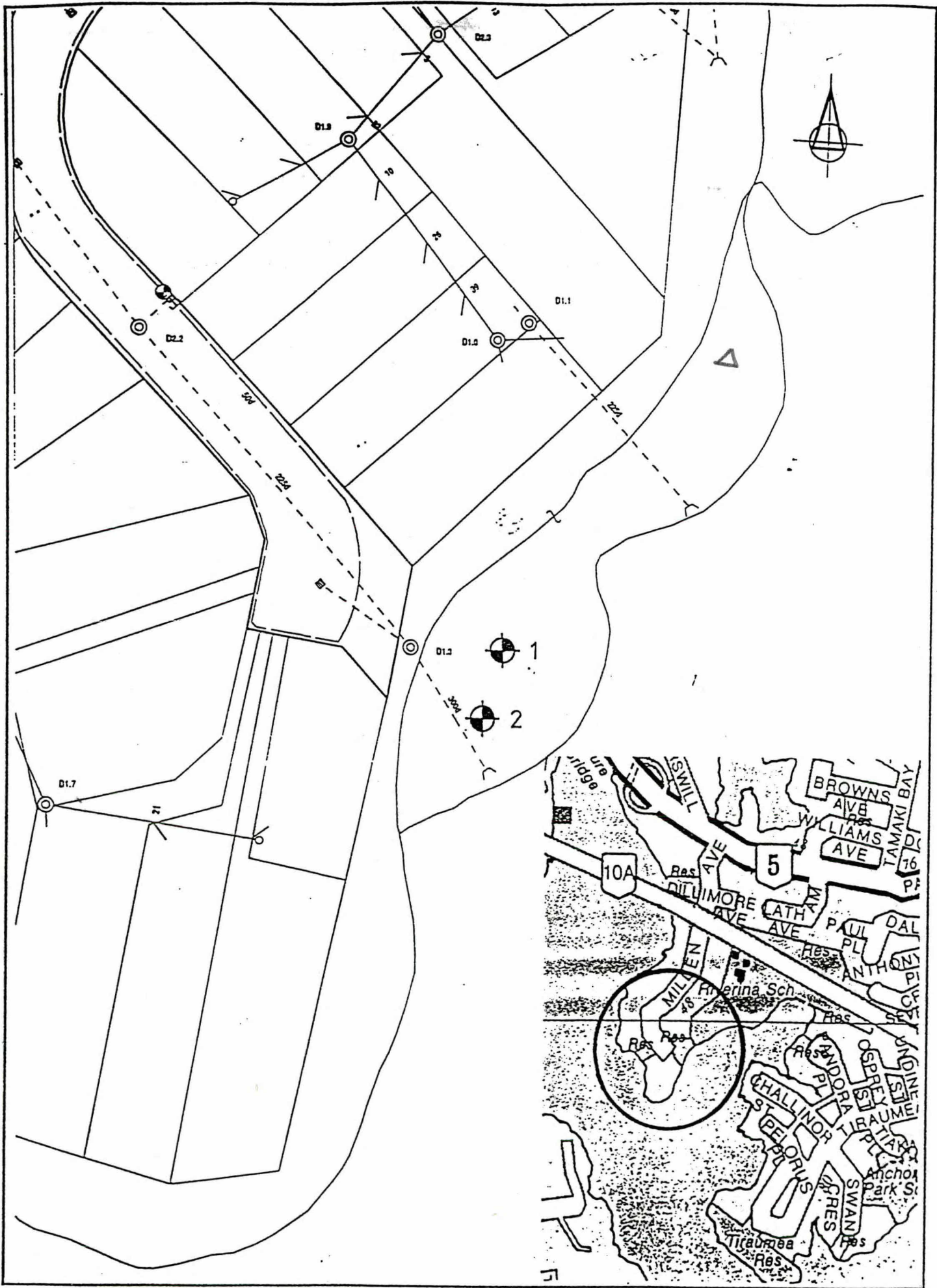
REV.

B/K. 92. 7P  
03 ~~24~~ 75 23c 24a

SO 494 92

2760 m<sup>2</sup>

Δ ✓



**MARUKAU**  
**CONSULTANTS**  
 Consulting Civil & Structural Engineers, Geotechnical Lab, Project Management, Contract Documentation & Supervision, Surveying.  
 Telephone (06) 367 8891  
 Fax (06) 262 8131

TITLE  
**MILLEN AVENUE**  
**WATER SAMPLING LOCATIONS**

REV. CHK.

NO.	DATE	BY	DESCRIPTION
1	07/11	D. Lender	DRAWN
2	07/11	A. Robinson	CHECKED
M.E. APPROVED			
PLAN NO. 22			



Blk.      Sh.      TP  
~~03~~      ~~86~~      23C      249  
07      ~~03~~

PT Lot 1

DP 5 ? 777

5.9273ha.

Δ ✓



**MANUKAU**  
**IM**  
 CONSULTANTS  
 Consulting Civil & Structural Engineers, Environmental Ltd.  
 Project Management, Concept Development & Supervision Services.  
 Telephone (011) 242 8911

TITLE  
**TI RAKAU PARK**  
**WATER SAMPLING LOCATIONS**  
 REV CHX

SCALE:		DATE
DRAWN	D. Lander	02/98
CHECKED	A. Robinson	02/98
P.L.C. APPROVED		

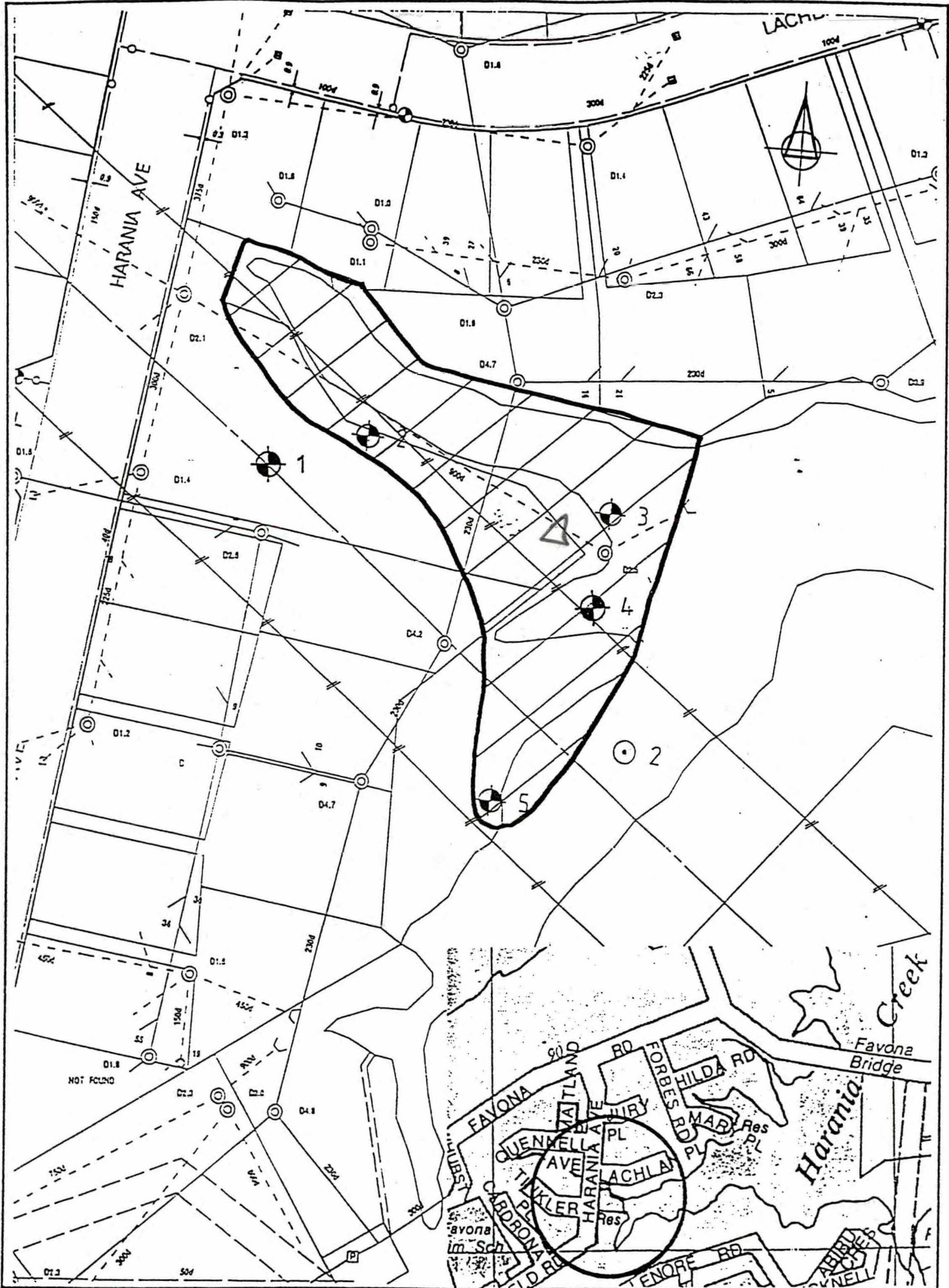
B/K.  
03

Sh.  
~~10, 11, 22, 23~~

TP  
10d, 11b.

Lot 61  
BP 61809  
2914 m<sup>2</sup>

Δ ✓



**MANUKAU CONSULTANTS**  
 Consulting Civil & Structural Engineers,  
 Geotechnical Ltd.,  
 Project Management,  
 Contract Documentation & Supervision,  
 Surveying.  
 Telephone (09) 282 8999

TITLE  
**HARANIA AVENUE  
 WATER SAMPLING LOCATIONS**

REV CHG

	BY	DATE
DRAWN	D. Lender	02/98
CHECKED	A. Robinson	02/98
H.C. APPROVED		

Blk.

R.

06

72

36b, 36d, 46c

Lot 19

DP 48346

1252 m<sup>2</sup>

X

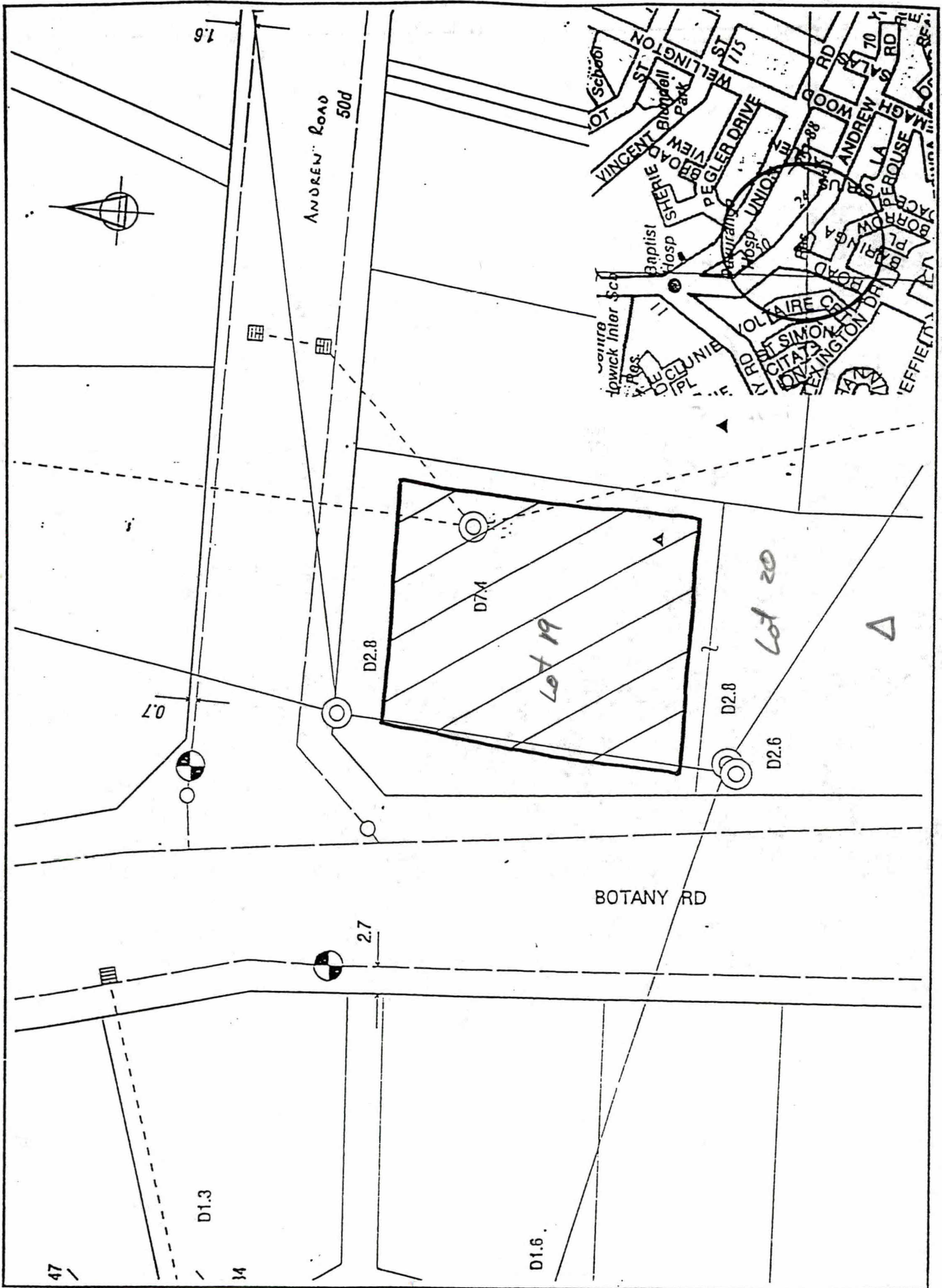
Lot 20

DP 48346

1189 m<sup>2</sup>

Δ

✓



**MANUKAU CONSULTANTS**  
 Consulting Civil & Structural Engineers, Environmental Ltd., Project Management, Contract Documentation & Supervision, Surveying.  
 Telephone (09) 262 0991 Fax (09) 262 4111

TITLE  
**BOTANY ROAD WATER SAMPLING LOCATIONS**

REV CHX

	SCALE	DATE
DRAWN	D. Lender	02/98
CHECKED	A. Robinson	02/98
PLS. APPROVED		
DATE		

Blk.

Sh.

TP

01

~~92, 94, 95~~

10c, 11a

not defined.

Lot 3

Δ ✓

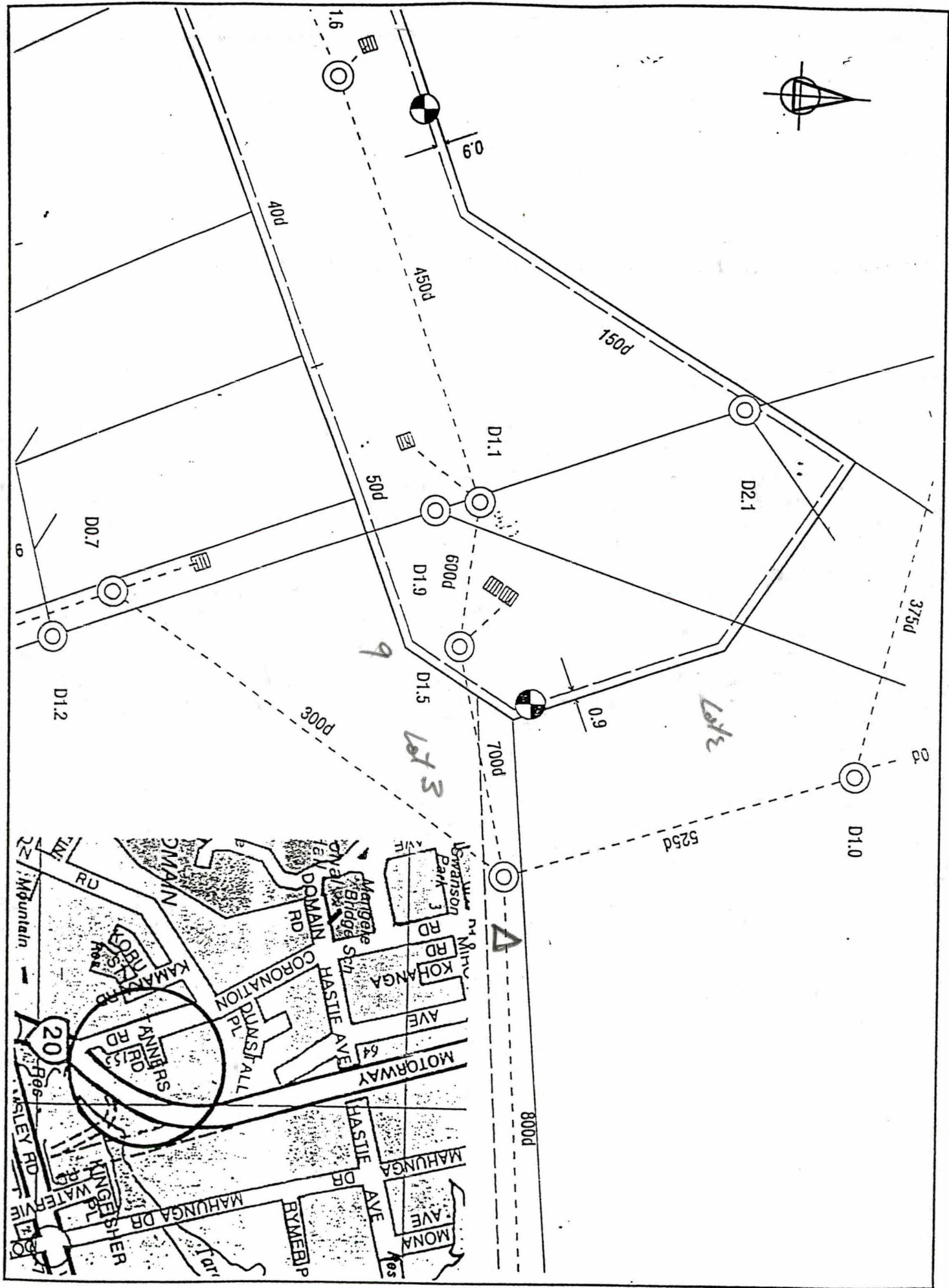
DP 114450

Lot 2

DP 114450

X

4.3939 ha.



**MANUKAU CONSULTANTS**  
 Consulting Civil & Structural Engineers  
 Geotechnical Ltd.  
 Project Management  
 Contract Administration  
 & Supervision  
 Surveys.  
 Telephone (09) 252 0999  
 Fax (09) 252 3131

TITLE  
**TANNERS ROAD  
 WATER SAMPLING LOCATIONS**

REV CNOX

SCALE		DATE
DRAWN	D. Lender	02/91
CHECKED	A. Rubrian	02/91
P.L.C. APPROVED		



B/K. Sh.  
01 V 01,02,04  
~~05~~

TD  
55, 57  
,

II I

End Rd. - Road Reserve

528 R

Allot 114

SO 45515 Parish of Pakwanga.

1.6946 ha.

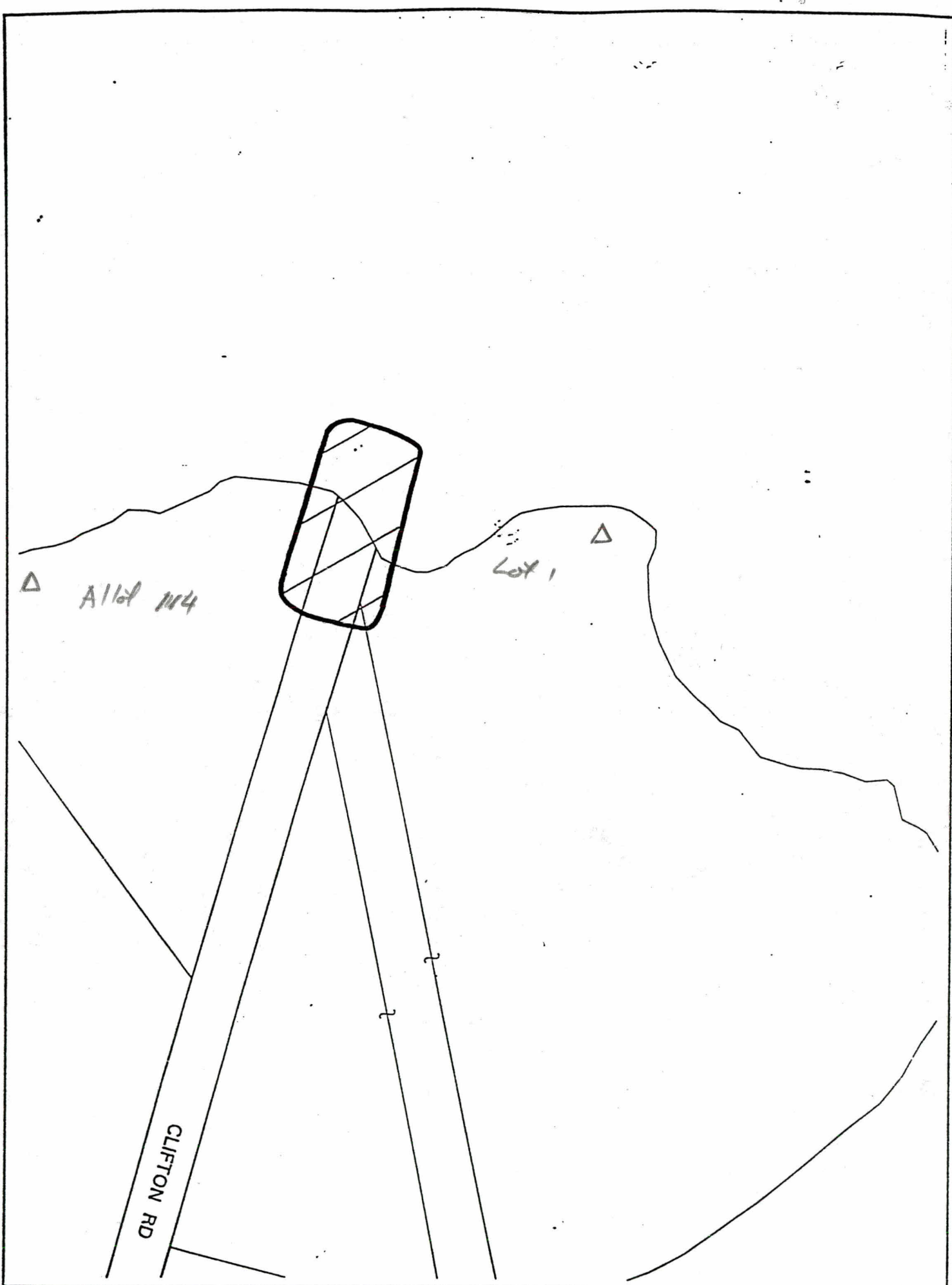
Δ ✓

Lot 1

DP 16612

Δ ✓

4.5932 ha.



**MANUKAU**  
**CONSULTANTS**  
 Consulting Civil & Structural  
 Engineers,  
 Geotechnical Lab,  
 Project Management,  
 Contract Documentation  
 & Supervision,  
 Surveying.  
 Telephone (09) 292 8993

TITLE  
**CLIFTON ROAD**  
**WATER SAMPLING LOCATIONS**

REV CHK

	SIGNED	DATE
DRAWN	D. Lander	02/10
CHECKED	A. Robinson	02/10
M.C. APPROVED		

Blk.

sh.

TP

03

84

166 26a

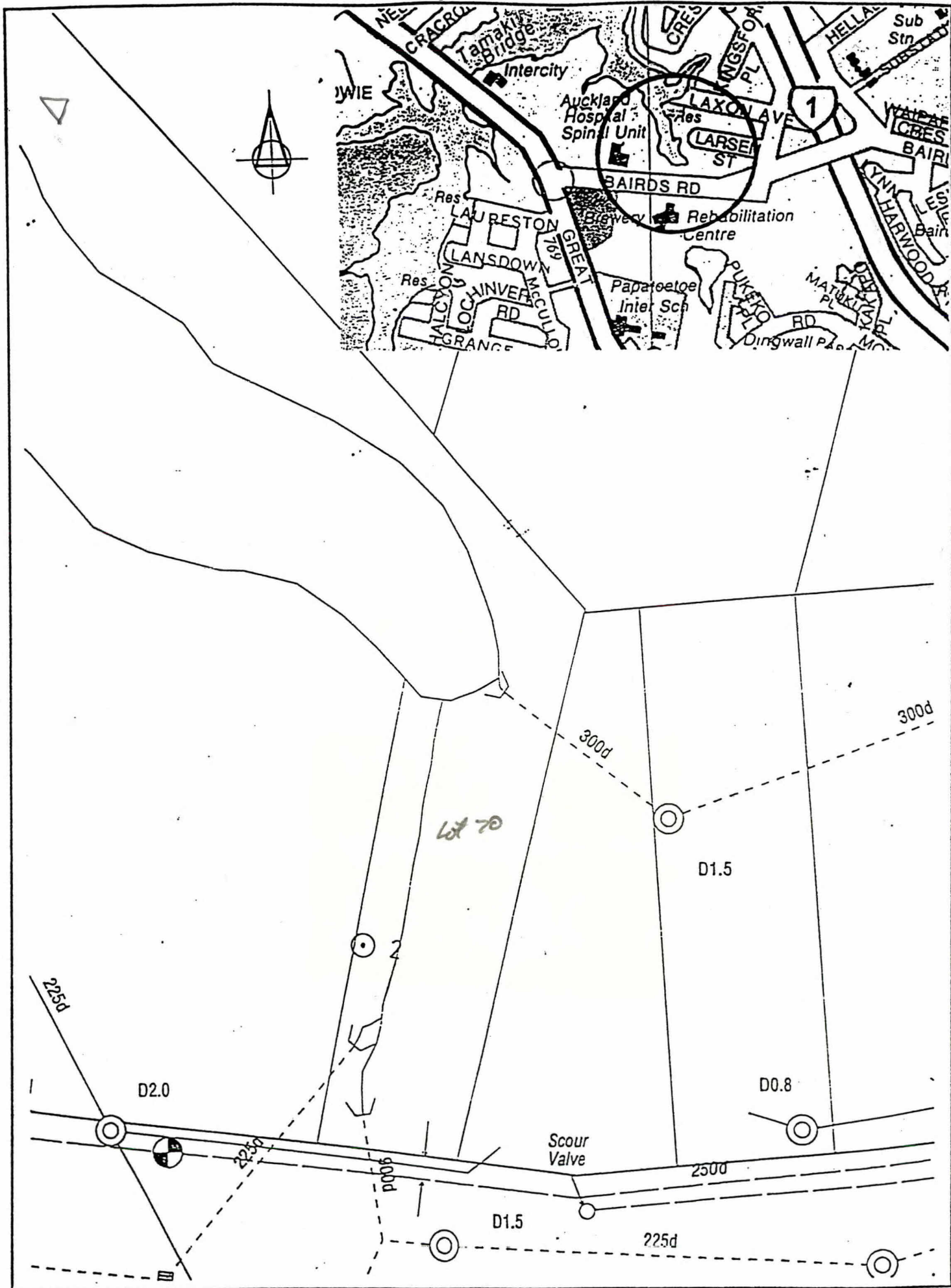
28 R

lot 70

DP 43950

9384 m<sup>2</sup>

Δ ✓



**MANUKAU CONSULTANTS**  
 Consulting Civil & Structural Engineers, Geotechnical Ltd, Project Management, Contract Documentation & Supervision, Surveying.  
 Telephone (06) 262 8888  
 Fax (06) 262 8131

TITLE  
**BAIRDS ROAD WATER SAMPLING LOCATIONS**

REV ENR

SIGNED		DATE
DRAWN	D. Lanier	02/98
CHECKED	A. Robinson	02/98
M.C. APPROVED		
PLAN NO 29		

B/k.  
03

Sh.  
85

TP  
23C

Lot 84

DP 39000

1.1458 ha.

Δ ✓

Leigh

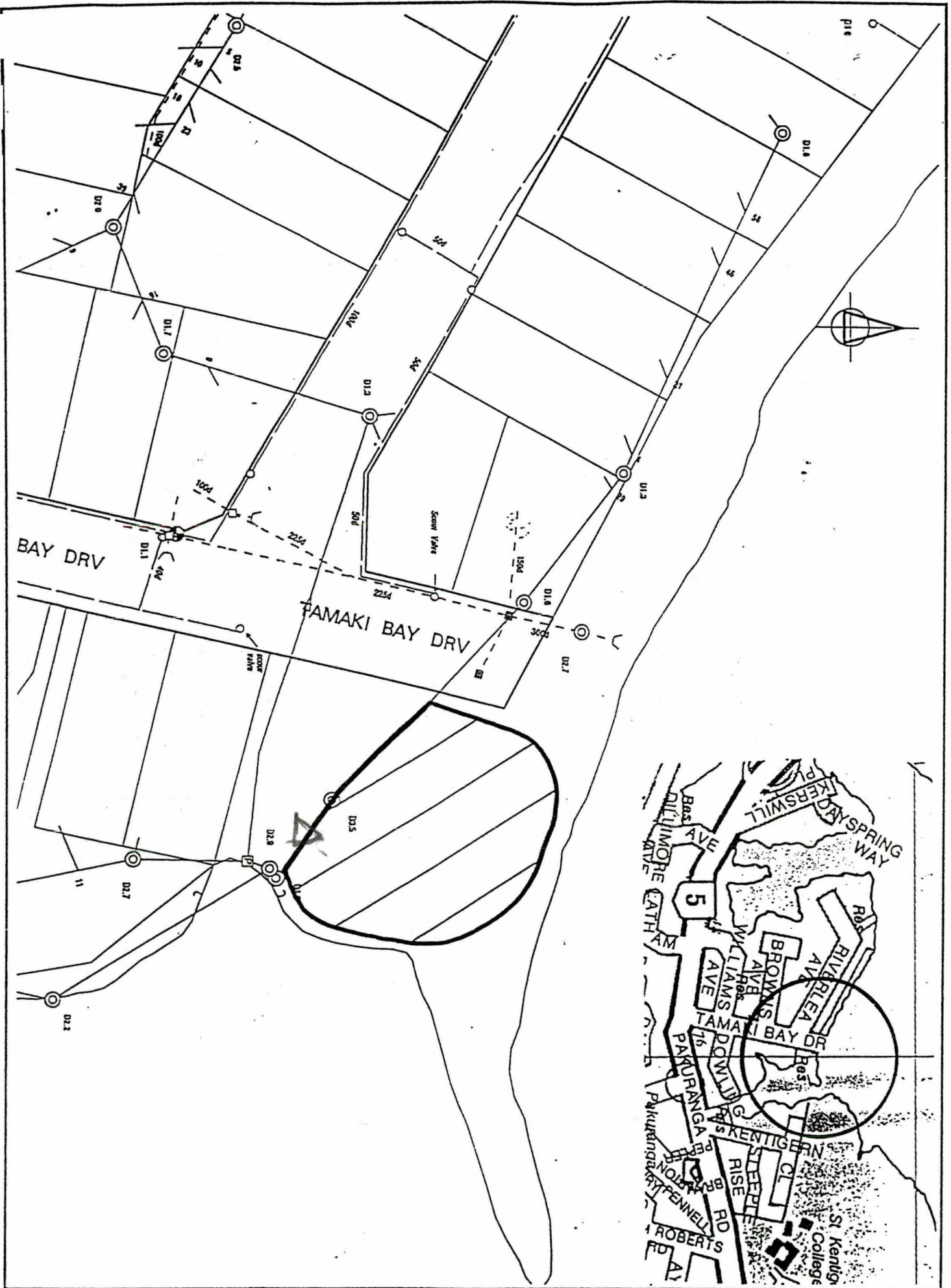
3 copies of

Te Puaa Corporate

Contract for signing.

Thanks

Stuart.



**MANUKAU**  
**ENGINEERS**  
 Consulting Civil & Structural  
 Engineers  
 Geotechnical Lab,  
 Project Management,  
 Contract Documentation  
 & Supervision,  
 Surveying.  
 Telephone (09) 252 0000

TITLE  
**RIVERLEA ROAD**  
**WATER SAMPLING LOCATIONS**

REV. CHK. \_\_\_\_\_

	SIGNED	DATE
DRAWN	D. Lander	07/78
CHECKED	A. Robinson	07/78
P.L. APPROVED		

B/K.  
03

sh.  
22

10d

145 R

On

Lot 9

DP 49029

961m<sup>2</sup> ?

Δ ✓



ABA WATER SUPPLY PIPE 5 IS POSITIONED FROM INFO. SUPPLIED BY AWA AND IS 7 POSITION CHECKED IN THE

TITLE  
**HARANIA INLET  
 WATER SAMPLING LOCATIONS**

	SCALE	DATE
DRAWN	D. Lender	02/98
CHECKED	A. Robinson	02/98
M.C. APPROVED		
REV.		

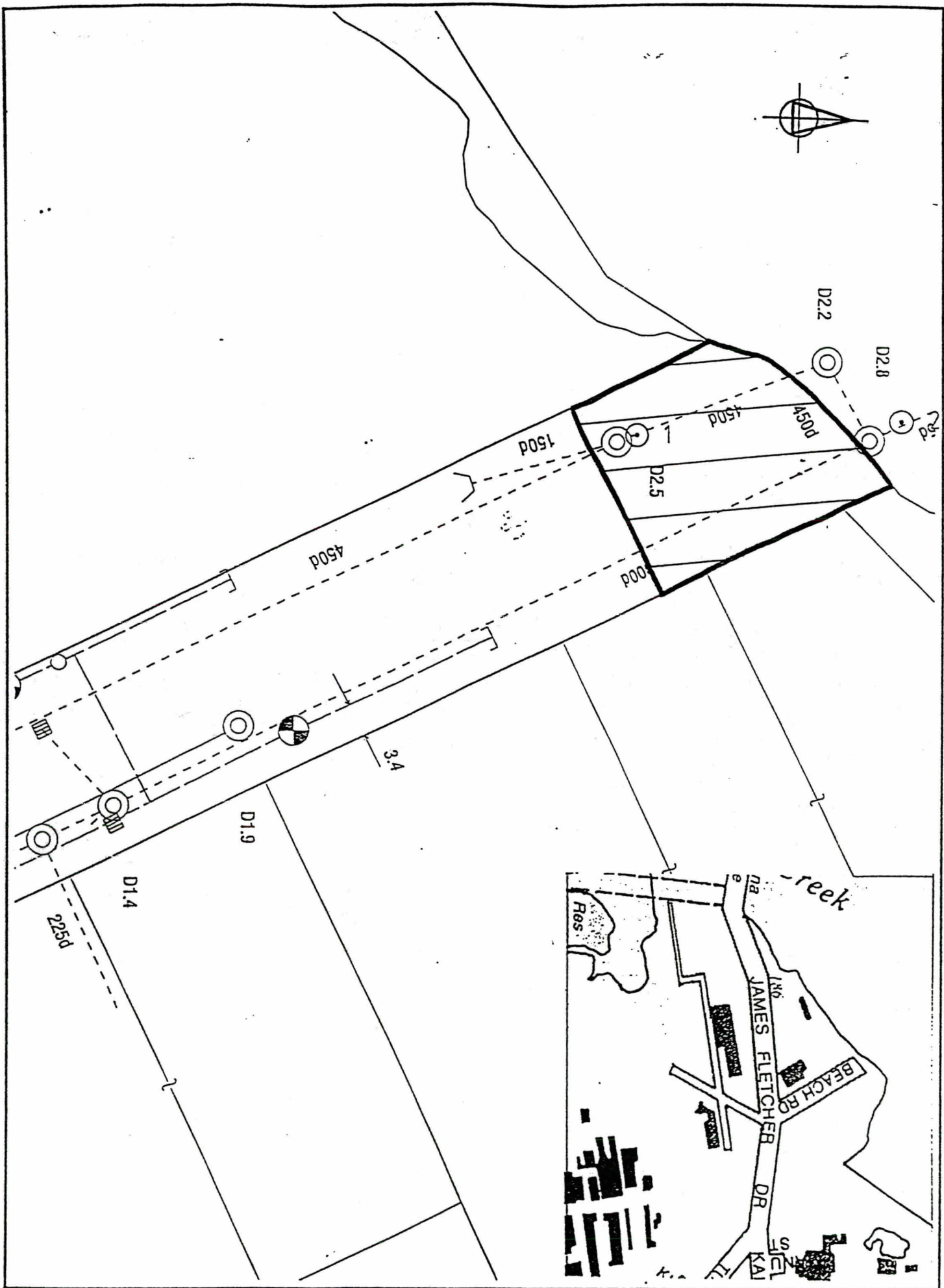
**MANUKAU**  
  
 CONSULTANTS LIMITED

Consulting Civil & Structural Engineers  
 Geotechnical Lab.  
 Project Management  
 Contract Documentation & Supervision  
 Surveying

Telephone (09) 262 8999  
 Fax (09) 262 8533

REV. CHG.





MANUKAU  
CONSULTANTS  
Consulting Civil & Structural  
Engineers,  
Geotechnical Ltd.  
Project Management,  
Contract Administration  
& Supervision,  
Surveying.  
Telephone (09) 292 8999

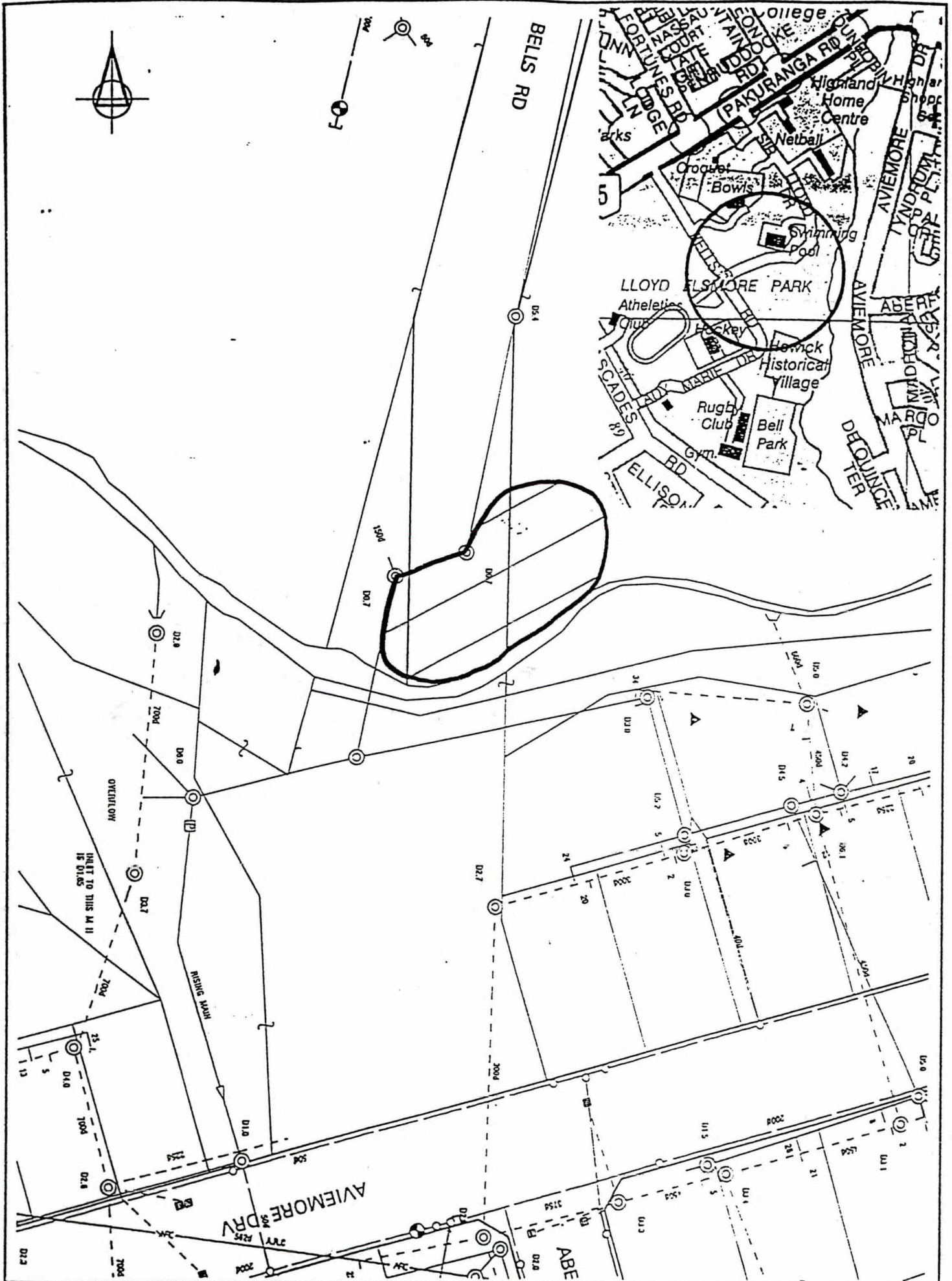
TITLE

BEACH ROAD  
WATER SAMPLING LOCATIONS

REV CMM

REV

SCALE		DATE
DRAWN	D. Lender	02/98
CHECKED	A. Robinson	02/98
N.L. APPROVED		



**MANUKAU CONSULTANTS**  
 Consulting Civil & Structural Engineers,  
 Geotechnical Lab,  
 Project Management,  
 Contract Documentation & Supervision,  
 Surveying.  
 Telephone (06) 242 8999  
 Fax (06) 242 8111

TITLE  
**BELLS ROAD  
 WATER SAMPLING LOCATIONS**

REV CHG

	SCALE	DATE
DRAWN	D Lander	02/91
CHECKED	A Robinson	02/91
M: APPROVED		

B/k.

sh.

7P

07

~~13, 14, 15, 16~~

23d, 24b 24d

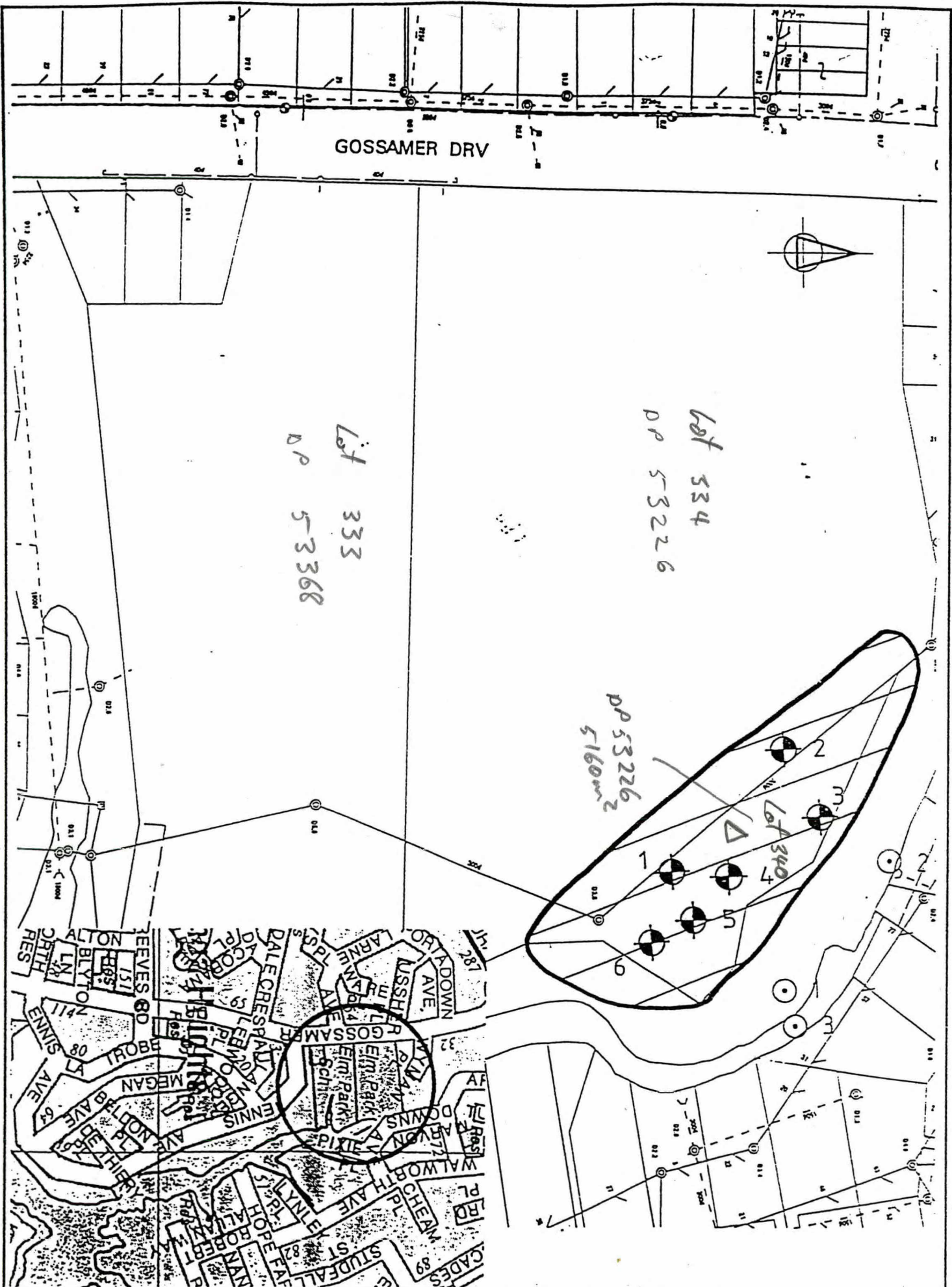
25

Lot 340

OP 53 226

5160 m<sup>2</sup>

Δ ✓



**MANUKAU**  
  
 Consulting Civil & Structural Engineers  
 Project Management, Contract Documentation & Supervision, Surveying  
 Telephone (06) 232 8099

TITLE  
**ELM PARK**  
**WATER SAMPLING LOCATIONS**

	SCALE	DATE
DRAWN	D. Lunder	02/11
CHECKED	A. Robinson	02/12
M.C. APPROVED		

914.  
08  
914.  
~~42~~, 43  
41a  
79

Road Reserve

X

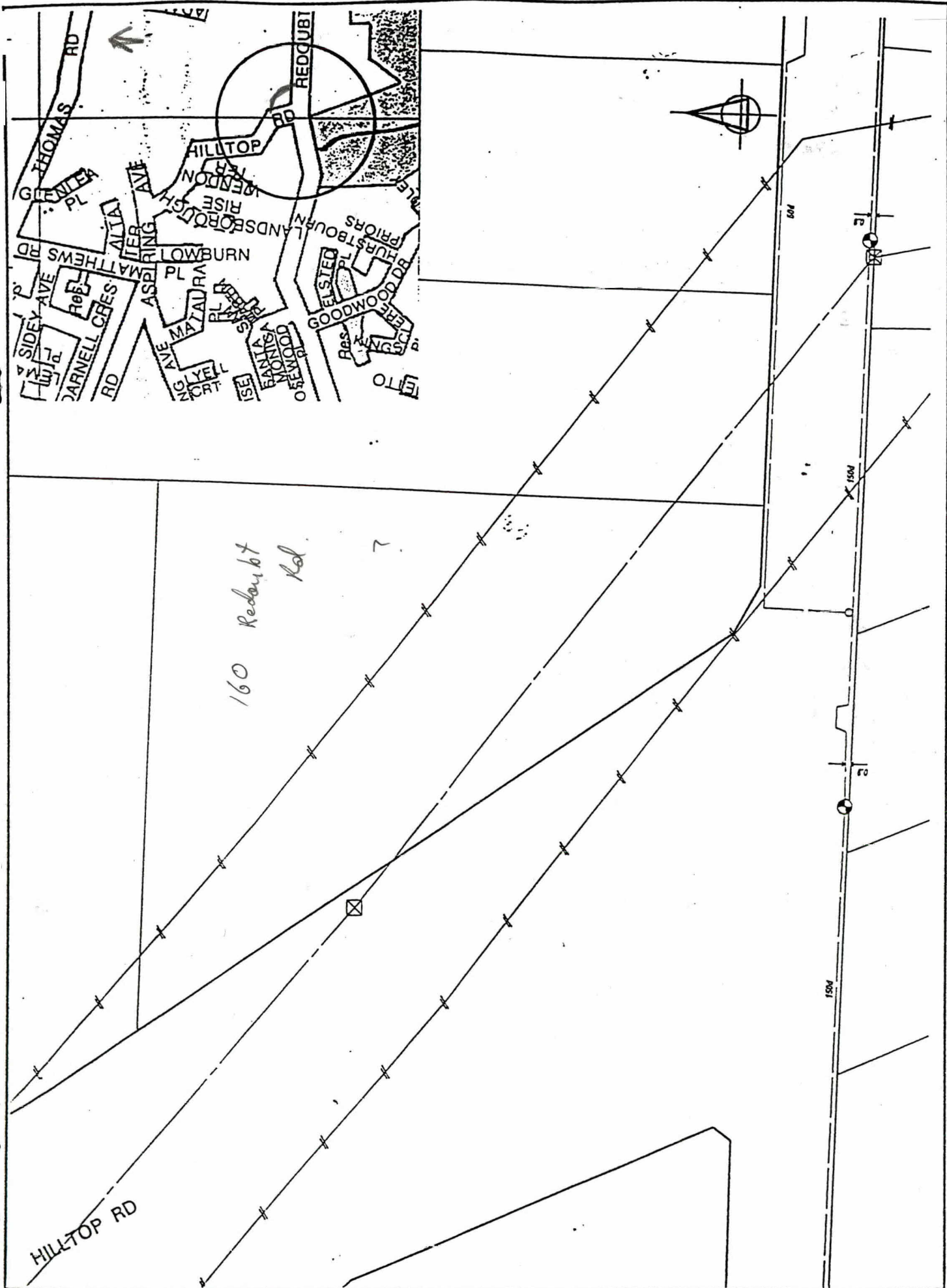
Hydropon ?

Lot 2

DP 44071

8094 m<sup>2</sup>

X



160 Redcubit Rd  
7

**MANUKAU**  
  
 CONSULTANTS  
 Consulting Civil & Structural  
 Engineers  
 Geotechnical Lab.  
 Project Management  
 Contract Documentation  
 & Supervision  
 Surveying  
 Telephone (06) 242 8999

TITLE  
**HILLTOP ROAD  
 WATER SAMPLING LOCATIONS**  
 DEV. FILE

	SIGNED	DATE
DRAWN	D. Lander	02/71
CHECKED	A. Robinson	02/71
M.L. APPROVED		

B/K.  
01

R.  
44, 56, 57,  
~~68, 80~~

TP  
59, 58

70R

Lot 3 DP 77585

Δ √

2. 1112 ha

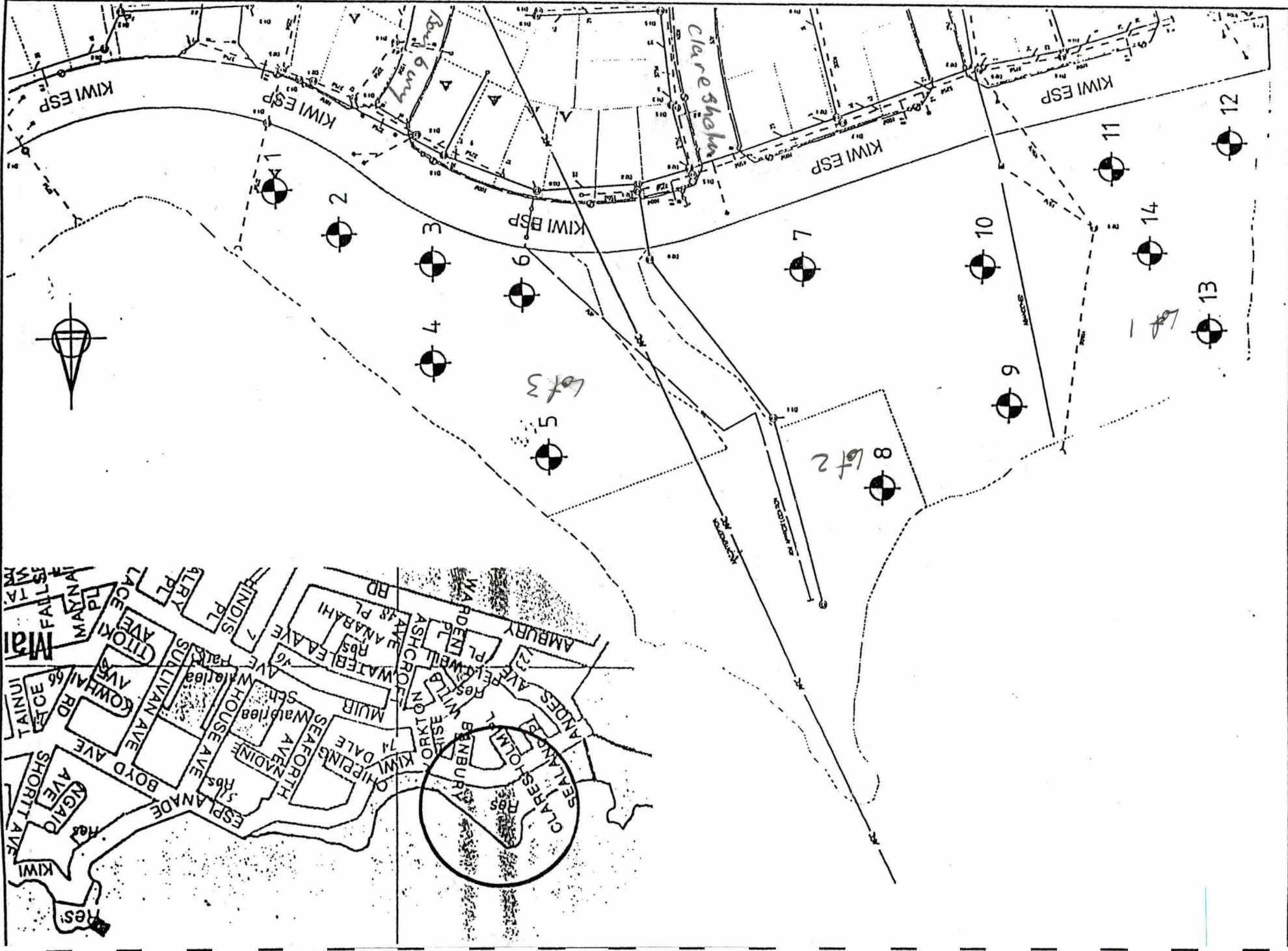
Lot 2 DP 77585

Δ √

1. 2552 ha.

Lot 1 DP 77585

20514 ha. Δ √



SCALE	DATE
DRAWN	CHECKED
PLC APPROVED	
D. Linnert	A. Robinson
07/11	07/11

MANUKAU YACHT CLUB  
WATER SAMPLING LOCATIONS

**MANUKAU**

Consulting Civil & Structural Engineers  
Project Management  
Contract Administration & Surveying



? Blk Sh.  
4 33 49a  
7 89

828

Allot 306

SO 38747

Parish of Pakaranga

435 m<sup>2</sup>

Δ ✓ ?

or is on road reserve?

38

Omaha Pk.

04 62 176.

PT Lot 2

DP 34852

Δ ✓

39.

Allenby Rd.

04 89,90,

27c

Allot 377

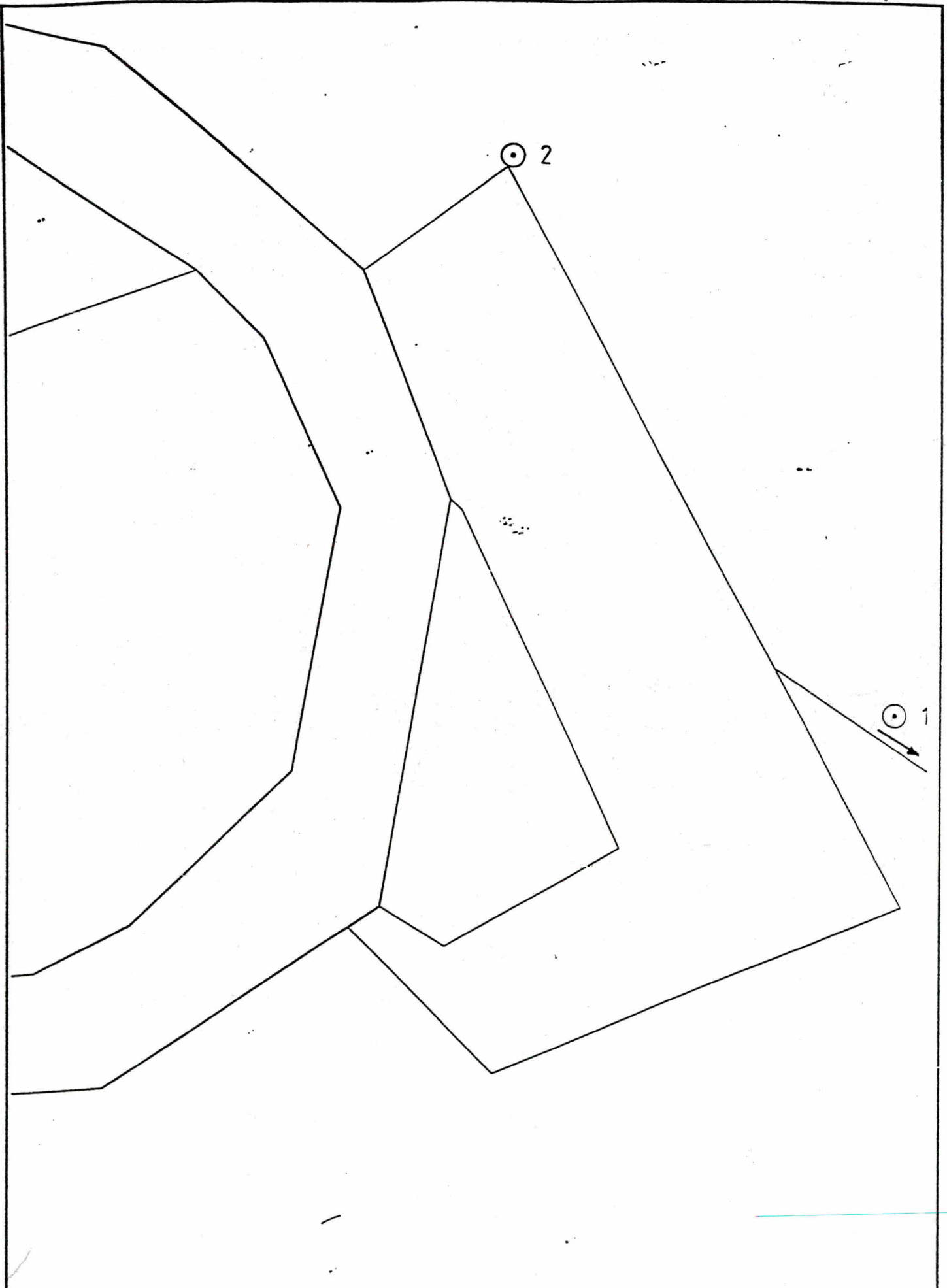
SO 46043

Parish of Manurewa

1.3130 ha.

Δ ✓

(66)



**MANUKAU**  
**CONSULTANTS**  
 LIMITED

Consulting Civil & Structural  
 Engineers,  
 Geotechnical Lab,  
 Project Management,  
 Contract Administration  
 & Supervision,  
 Surveying.

Telephone (08) 262 8999  
 Fax (08) 262 8131

TITLE

**MOUNGAMOUNGAROA BRIDGE  
 WATER SAMPLING LOCATIONS**

REV. CHK

REV.

	SIGNED	DATE
DRAWN	D. Lander	02/78
CHECKED	A. Robinson	02/78
M.C. APPROVED		
PLAN NO. 38		