

Figure 1: Wintertime average SO₂ concentrations (2015 Meteorological year)

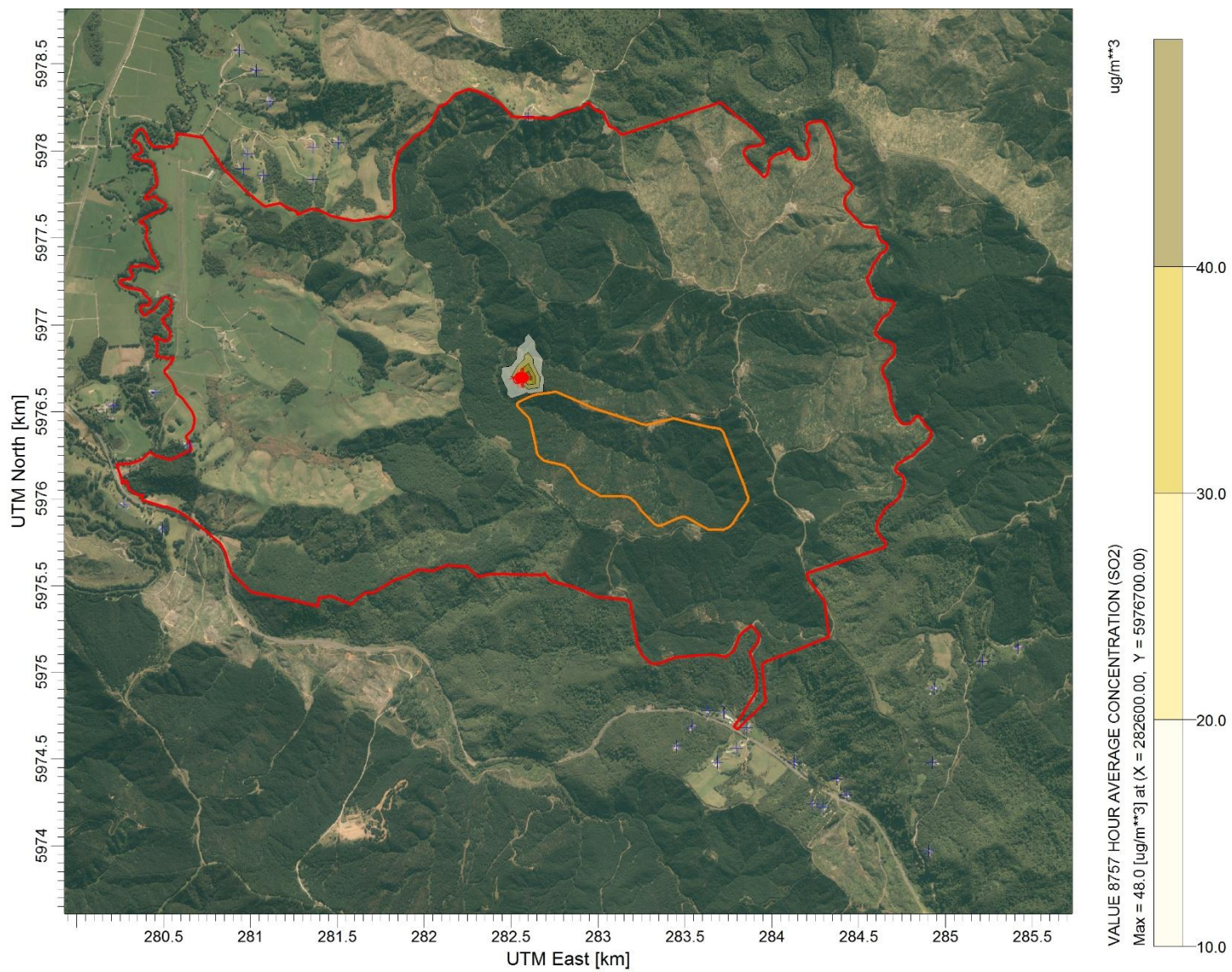


Figure 2: Annual average SO₂ concentrations (2015 Meteorological year)

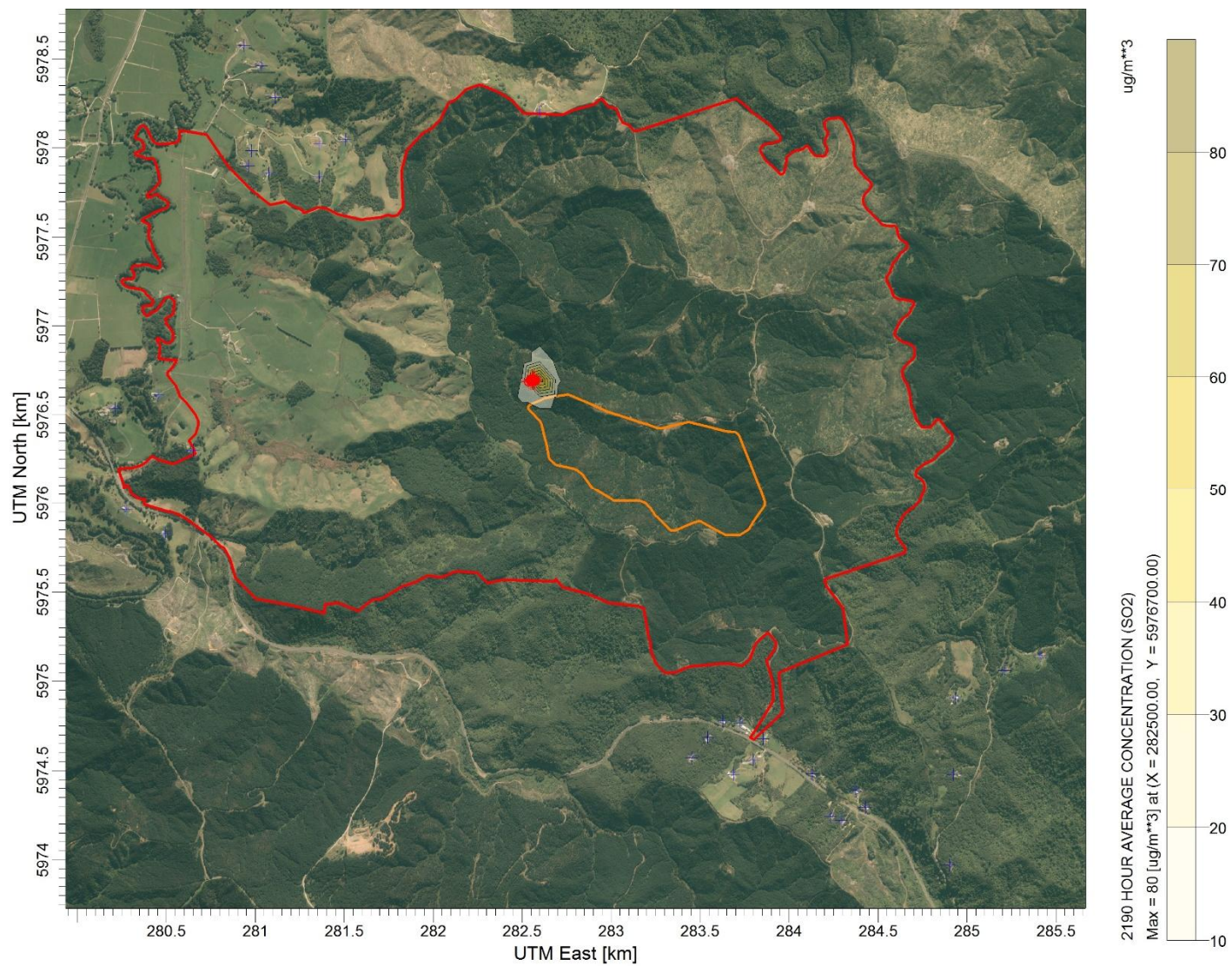


Figure 3: Wintertime average SO₂ concentrations (2017 Meteorological year)

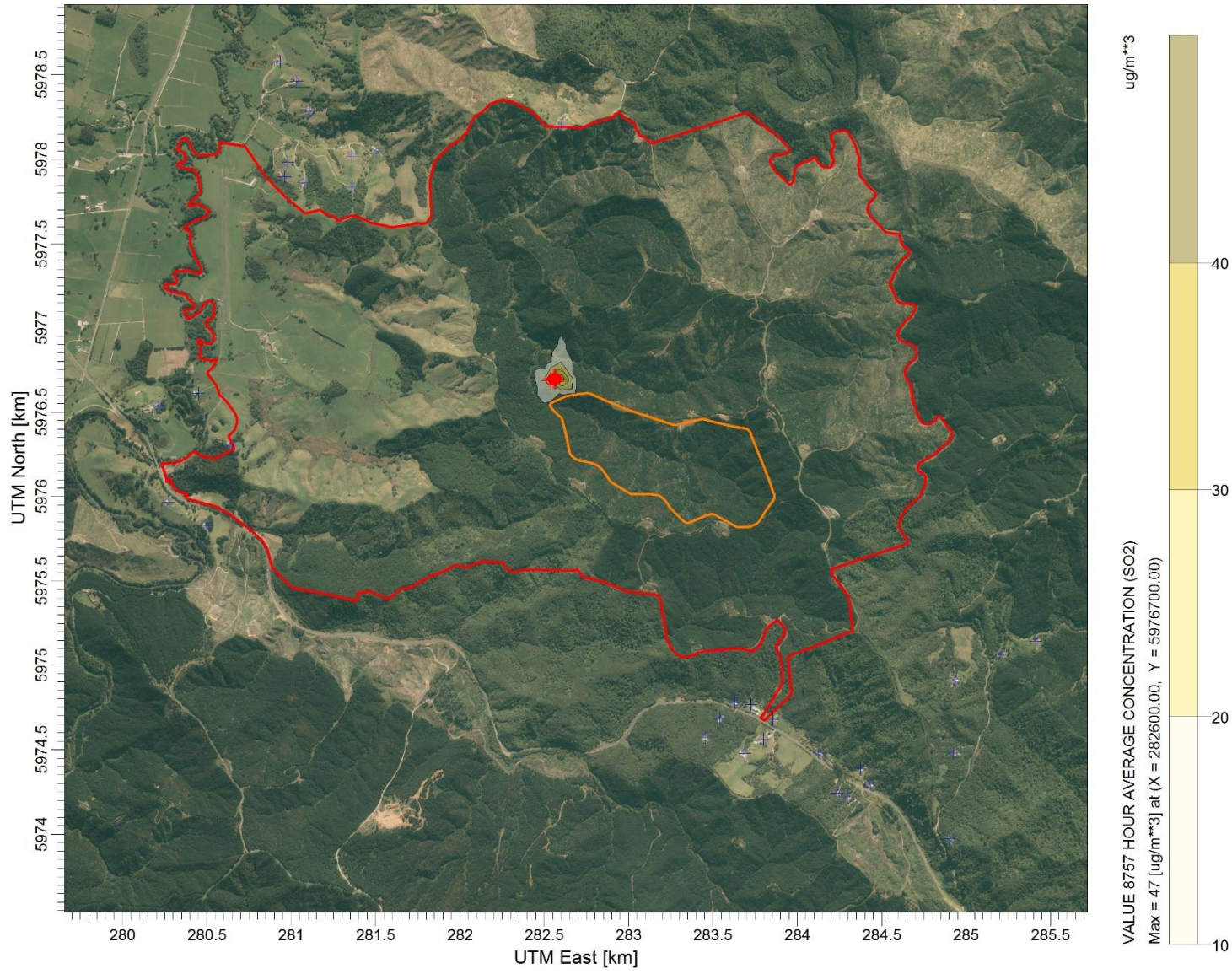


Figure 4: Annual average SO₂ concentrations (2017 Meteorological year)