

MANUKAU
CONSULTANTS
 CONSULTANTS
 L.L.B.L.L.

Consulting Civil & Structural Engineers, Geotechnical Ltd. Project Management, Contract Documentation & Supervision, Surveying.

Telephone (09) 262 8999
 Fax (09) 262 8131

TITLE

**NORANA ROAD
 WATER SAMPLING LOCATIONS**

REV CPOX

REV

| | SIGNED | DATE |
|---------------|-------------|-------|
| DRAWN | D. Londer | 07/11 |
| CHECKED | A. Robinson | 07/11 |
| P.L. APPROVED | | |
| D. | | |

X

6083 m²

DP 55287

Lot 118

60R

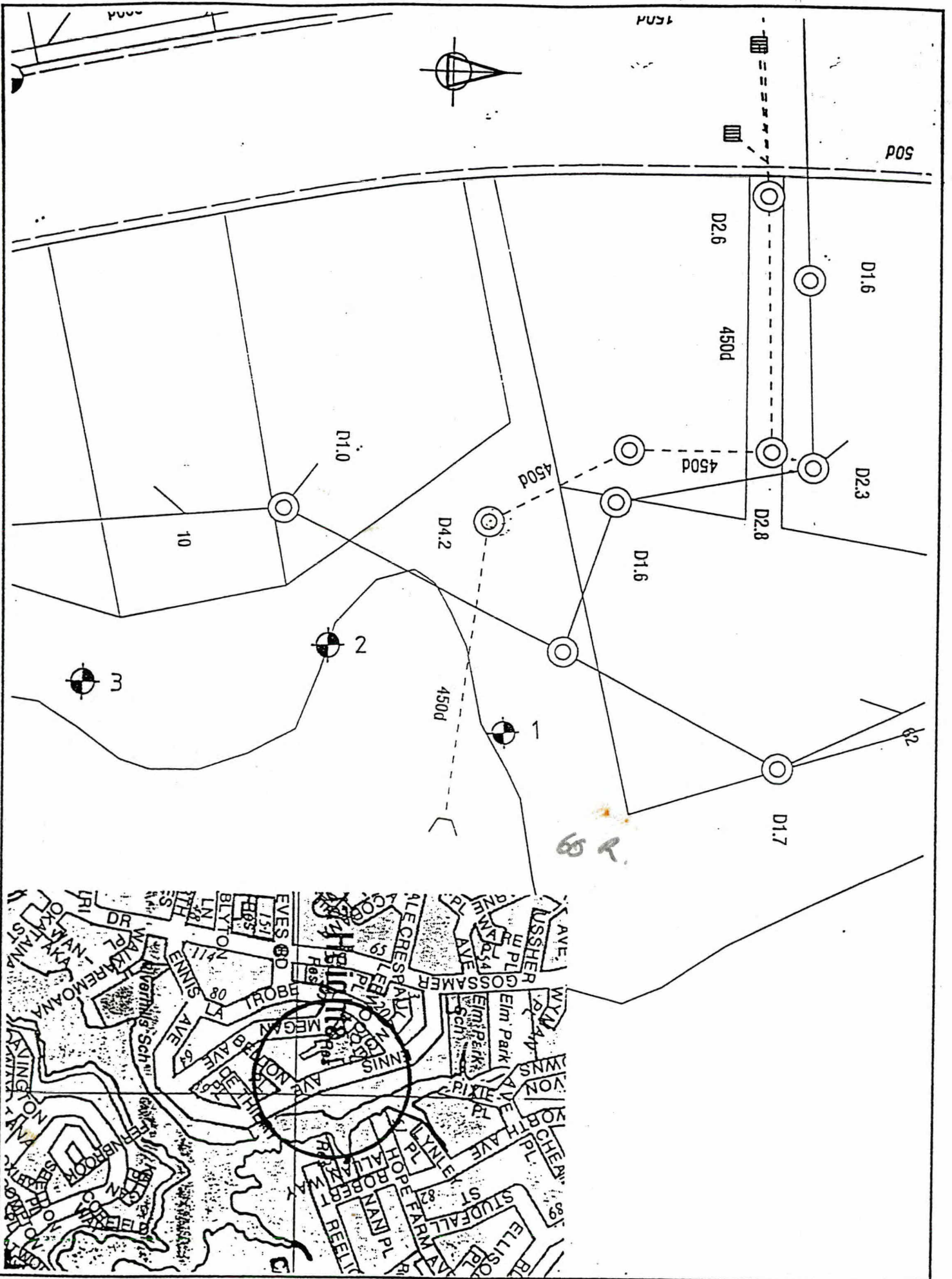
61k

9k

~~11.5, 26.27~~

234, 246, 36c, 37a

TP



MANUKAU CONSULTANTS LIMITED
 Consulting Civil & Structural Engineers
 Geotechnical Ltd. Project Management, Contract Documentation & Supervision, Surveying.
 Telephone (06) 262 8011
 Fax (06) 262 8131

TITLE
ENNIS AVE WATER SAMPLING LOCATIONS

REV. CHR.

| | SIGNED | DATE |
|--------------|-------------|-------|
| DRAWN | D. Lander | 02/98 |
| CHECKED | A. Robinson | 01/98 |
| ALL APPROVED | | |
| PLAN NO. 20 | | |

REV.

Blk.
of

sk.
~~44, 56, 57,~~
~~68, 80~~

TP
5a, 5b.

PT Allot 68

SD 251 29

x

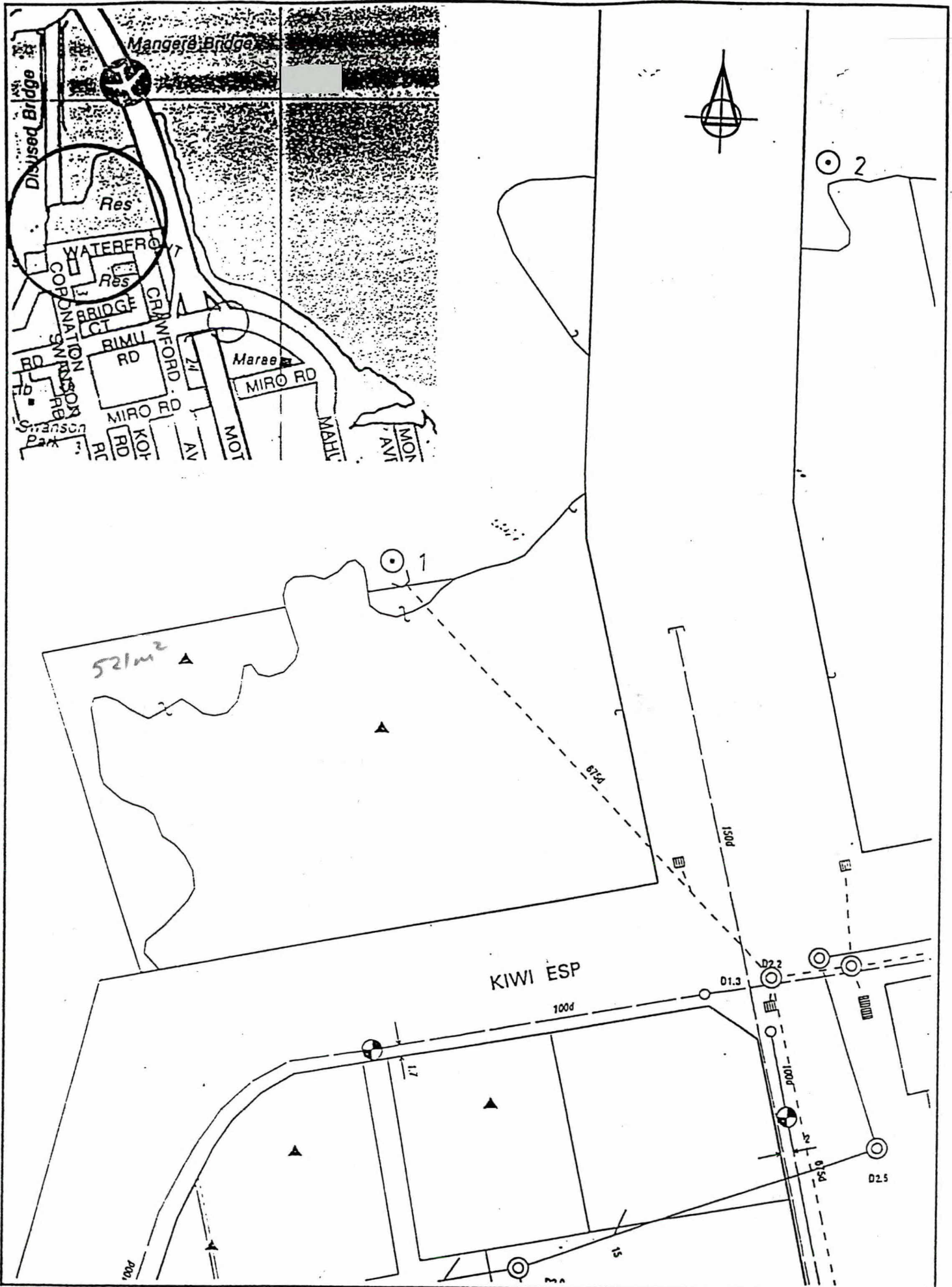
Village of Mungre

PT

SD 42353

521m²

Δ ✓



MANOKAU
M
 CONSULTANTS
 Limited

Consulting Civil & Structural
 Engineers
 Geotechnical Lab.
 Project Management,
 Contract Administration
 & Supervision,
 Surveying.

Telephone (09) 282 8999
 Fax (09) 282 5137

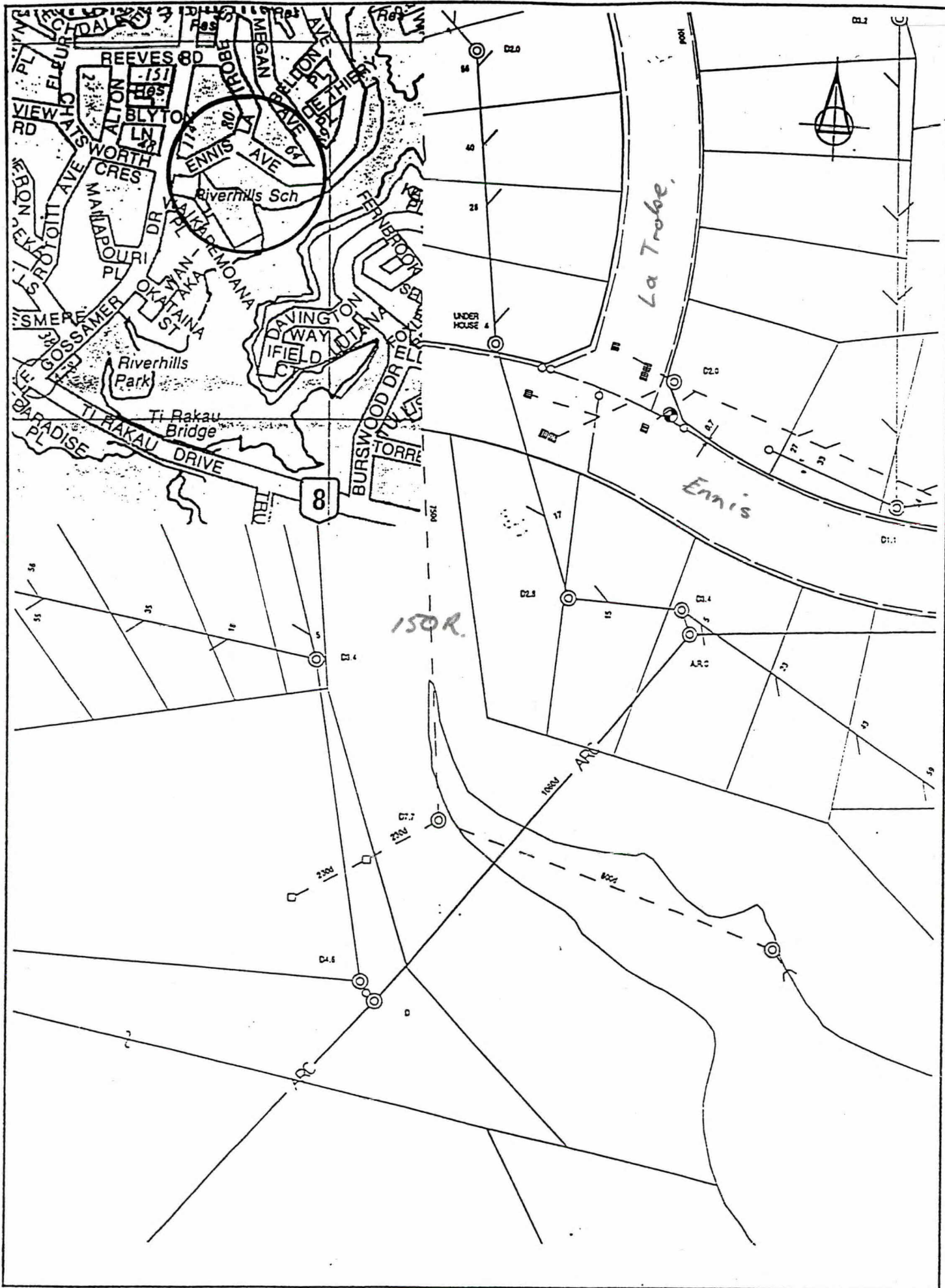
TITLE

**KIWI ESPLANADE
 WATER SAMPLING LOCATIONS**

REV. CHK

REV.

| | SIGNED | DATE |
|-----------------|-------------|-------|
| DRAWN | D. Lander | 02/98 |
| CHECKED | A. Robinson | 07/98 |
| P.L.C. APPROVED | | |
| PLAN NO. 21 | | |



MANUKAU CONSULTANTS LIMITED
 Consulting Civil & Structural Engineers,
 Commercial Ltd. Project Management, Contract Documentation & Supervision, Surveying.
 Telephone (06) 262 8999
 Fax (06) 262 5121

TITLE
**RIVERHILLS SCHOOL
 WATER SAMPLING LOCATIONS**
 REV. CHK.

| SCALE | | DATE |
|---------------|-------------|-------|
| DRAWN | G. Lander | 02/98 |
| CHECKED | A. Robinson | 02/98 |
| M.C. APPROVED | | |
| PLAN NO. 22 | | |

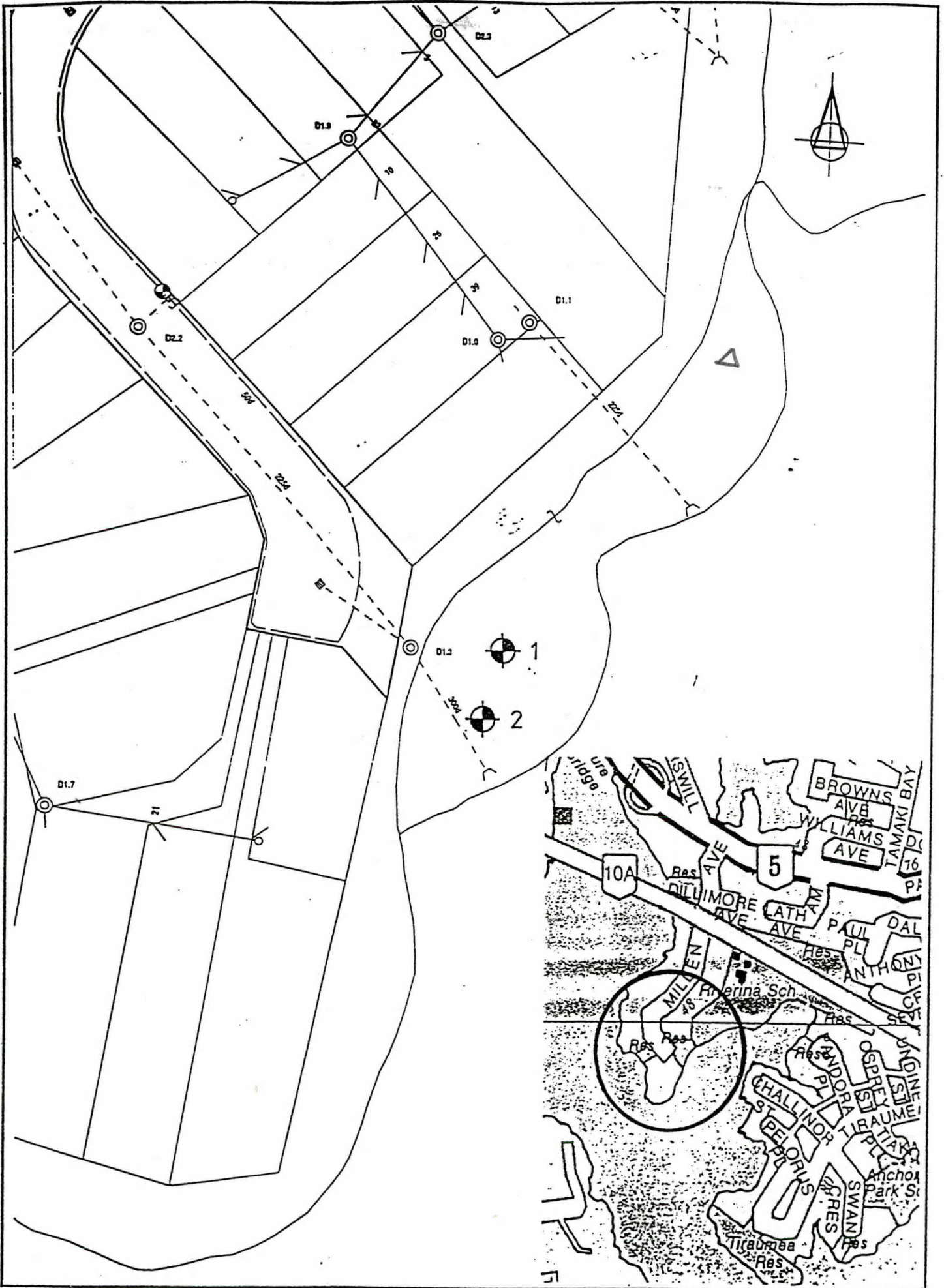
REV.

B/K. 9h. 7P
03 24, 75 23c 24a

SO 494 92

2760 m²

Δ ✓



MANUKAU
CONSULTANTS
 CONSULTANTS
 CONSULTANTS

Consulting Civil & Structural
 Engineers
 Geotechnical Lab.
 Project Management
 Control Documentation
 & Supervision
 Surveying.

Telephone (06) 262 8091
 Fax (06) 262 8131

TITLE

**MILLEN AVENUE
 WATER SAMPLING LOCATIONS**

REV. CHK.

| NO. | DATE | BY | DESCRIPTION |
|---------------|-------|-------------|-------------|
| 1 | 07/11 | D. Lender | DRAWN |
| 2 | 07/11 | A. Robinson | CHECKED |
| M.C. APPROVED | | | |
| PLAN NO. 22 | | | |

Blk. Sh. TP
~~03~~ ~~86~~ 23C 249
07 ~~03~~

PT Lot 1

DP 5 ? 777

5.9273 ha.

Δ ✓



MANUKAU
IM
 CONSULTANTS
 Consulting Civil & Structural
 Engineers
 Environmental Ltd.
 Project Management
 Contract Documentation
 & Supervision
 Surveying
 Telephone (041) 242 8941

TITLE
TI RAKAU PARK
WATER SAMPLING LOCATIONS
 REV CHX

| SCALE: | | DATE |
|-----------------|-------------|-------|
| DRAWN | D. Lander | 02/98 |
| CHECKED | A. Robinson | 02/98 |
| P.L.C. APPROVED | | |

B/K.
03

Sh.
~~10, 11, 22, 23~~

TP
10d, 11b.

Lot 61
BP 61809
2914 m²

Δ ✓

Blk.

R.

06

72

36b, 36d, 46c

Lot 19

DP 48346

1252 m²

X

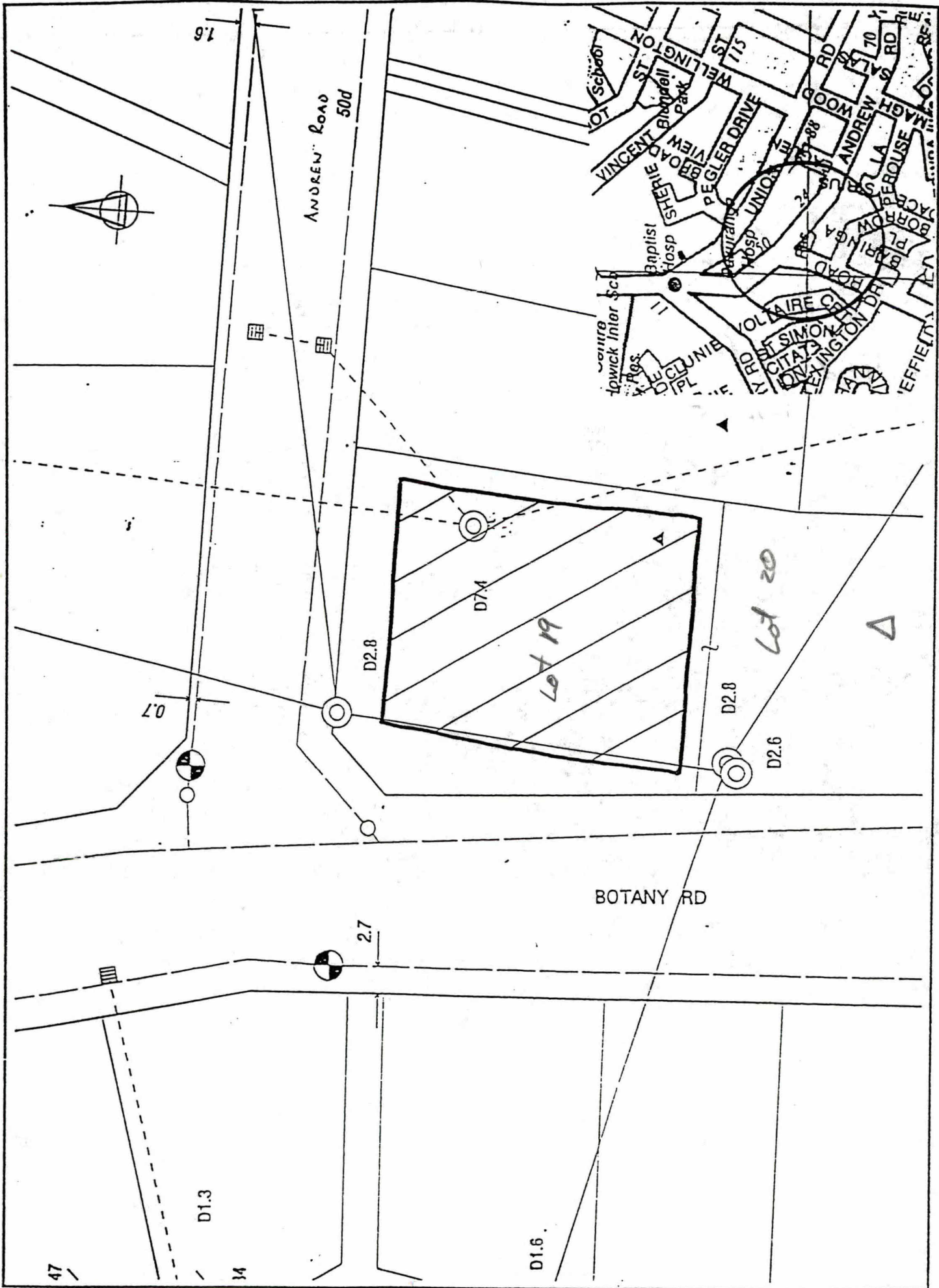
Lot 20

DP 48346

1189 m²

Δ

✓



MANUKAU CONSULTANTS
 Consulting Civil & Structural Engineers, Environmental Ltd., Project Management, Contract Documentation & Supervision, Surveying.
 Telephone (09) 262 0991 Fax (09) 262 4111

TITLE: **BOTANY ROAD WATER SAMPLING LOCATIONS**

REV CHX

| | SCALE: | DATE: |
|---------------|-------------|-------|
| DRAWN | D. Lender | 02/98 |
| CHECKED | A. Robinson | 02/98 |
| PLS. APPROVED | | |
| DATE | | |

Blk.

Sh.

TP

01

~~92, 94, 95~~

10c, 11a

not defined.

Lot 3

Δ ✓

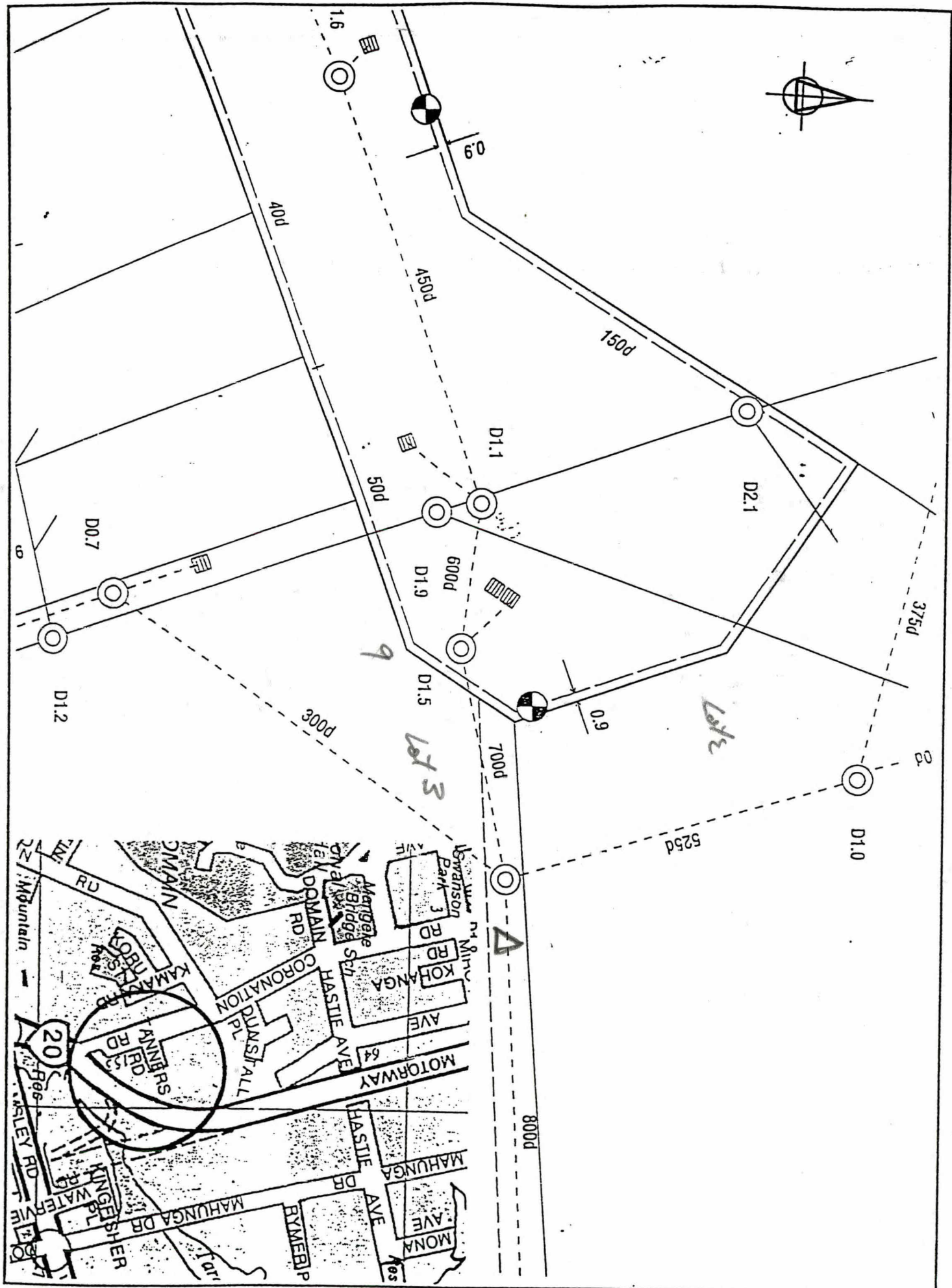
DP 114450

Lot 2

DP 114450

X

4.3939 ha.



MANUKAU CONSULTANTS
 Consulting Civil & Structural Engineers
 Geotechnical Ltd.
 Project Management
 Contract Administration
 & Supervision
 Surveys.
 Telephone (09) 252 0999
 Fax (09) 252 3131

TITLE
**TANNERS ROAD
 WATER SAMPLING LOCATIONS**
 REV CNOX

| SCALE | | DATE |
|-----------------|------------|-------|
| DRAWN | D. Lender | 02/99 |
| CHECKED | A. Rubrian | 02/99 |
| P.L.C. APPROVED | | |

B/K. Sh.
01 V 01,02,04
~~05~~

TD
55, 57
,

II I

End Rd. - Road Reserve

528 R

Allot 114

SO 45515 Parish of Pakwanga.

1.6946 ha.

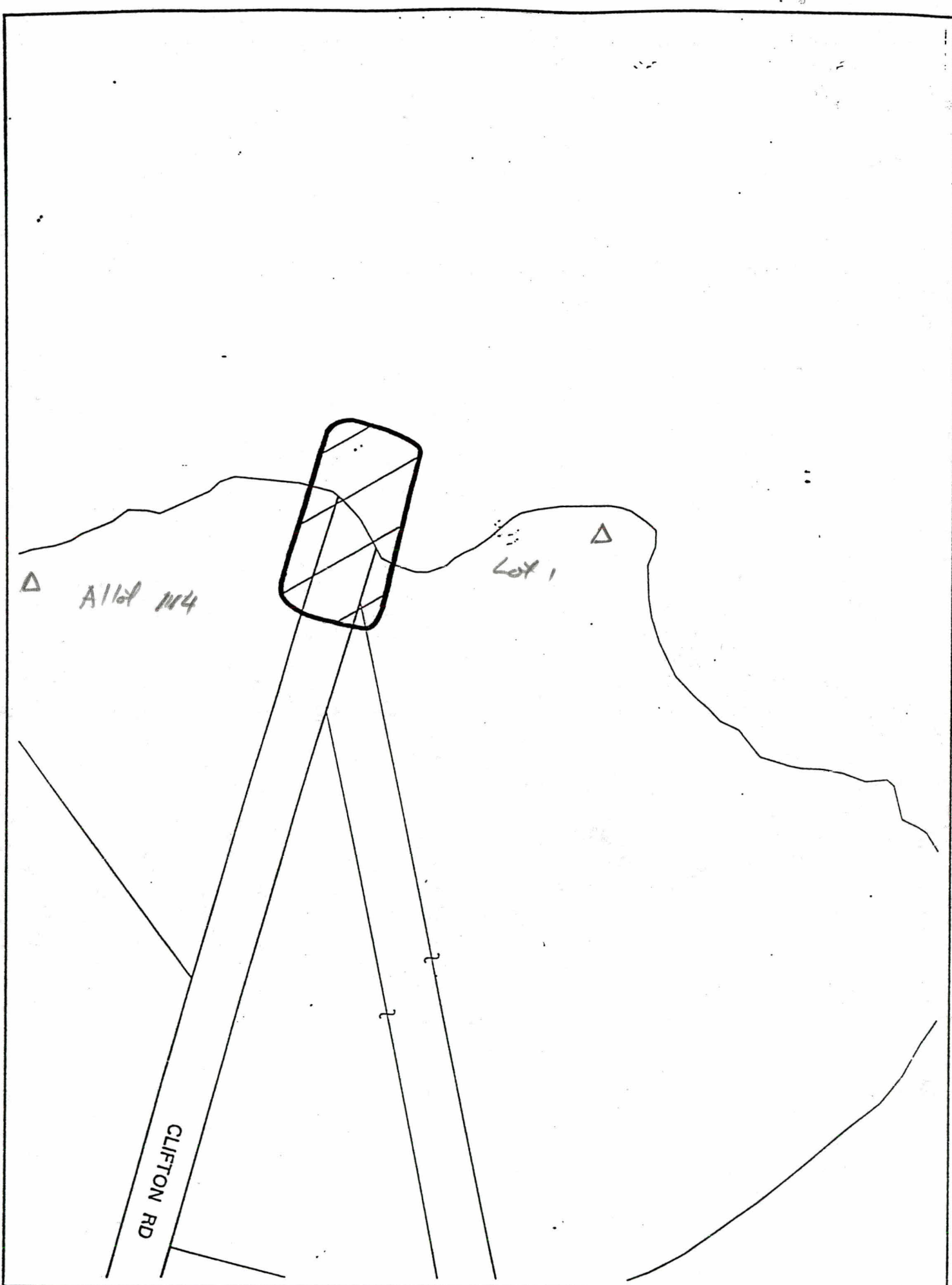
Δ ✓

Lot 1

DP 16612

Δ ✓

4.5932 ha.



MANUKAU
CONSULTANTS
Consulting Civil & Structural
Engineers,
Geotechnical Lab,
Project Management,
Contract Documentation
& Supervision,
Surveying.
Telephone (09) 292 8993

TITLE
**CLIFTON ROAD
WATER SAMPLING LOCATIONS**

REV CHK

| | SIGNED | DATE |
|---------------|-------------|-------|
| DRAWN | D. Lander | 02/10 |
| CHECKED | A. Robinson | 02/10 |
| P.L. APPROVED | | |

Blk.

sh.

TP

03

84

166 26a

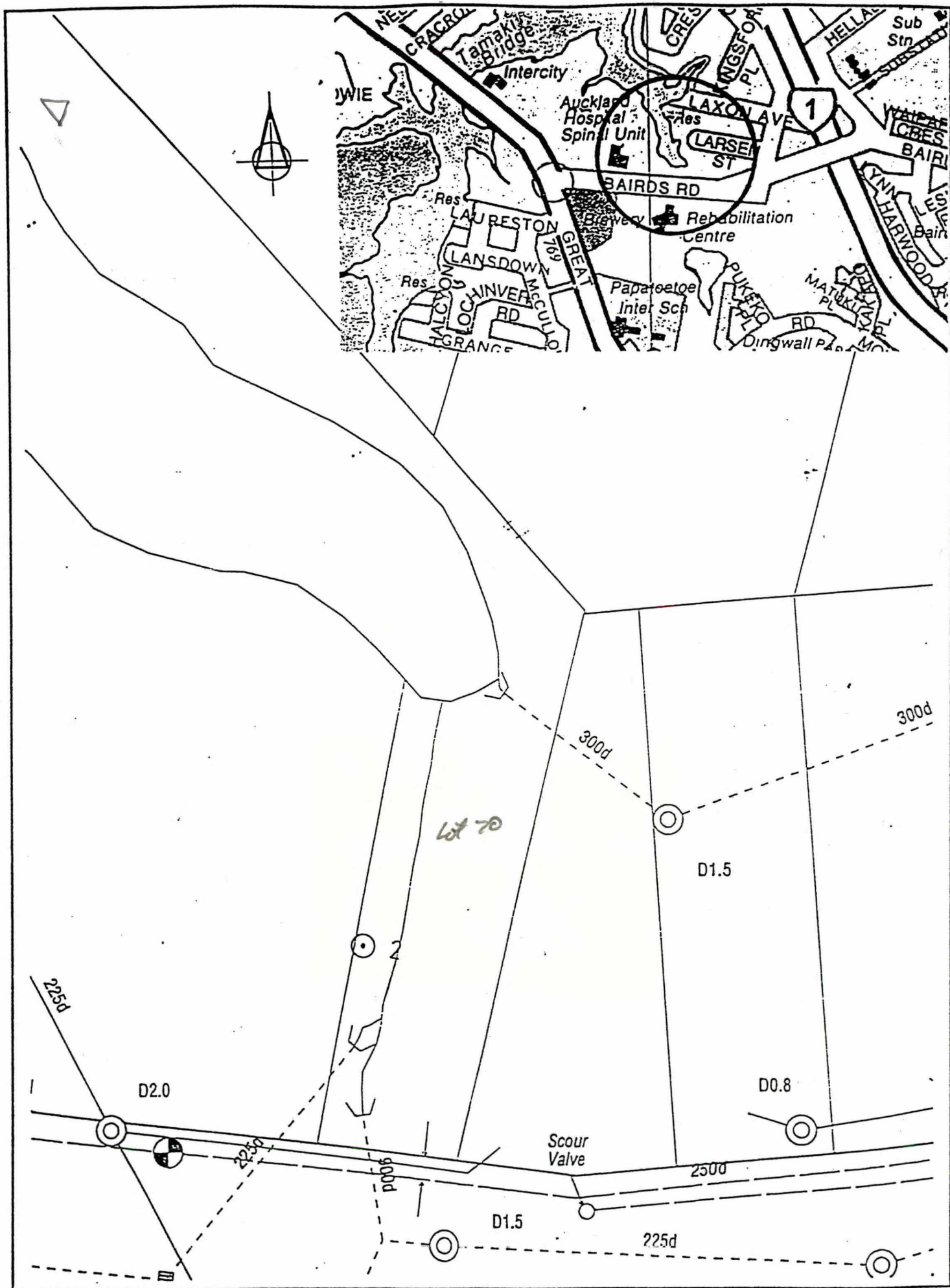
28 R

lot 70

DP 43950

9384 m²

Δ ✓



Lot 70

D1.5

D2.0

D0.8

Scour Valve

D1.5

225d

2500

300d

300d

225d

225d

300d

MANUKAU CONSULTANTS
 Consulting Civil & Structural Engineers, Geotechnical Ltd, Project Management, Contract Documentation & Supervision, Surveying.
 Telephone (06) 242 0400
 Fax (06) 242 8131

TITLE
BAIRDS ROAD WATER SAMPLING LOCATIONS

REV ENR

| SIGNED | | DATE |
|---------------|-------------|-------|
| DRAWN | D. Lander | 02/98 |
| CHECKED | A. Robinson | 02/98 |
| M.C. APPROVED | | |
| PLAN NO 29 | | |

B/k.
03

Sh.
85

TP
23C

Lot 84

DP 39000

1.1458 ha.

Δ ✓

Leigh

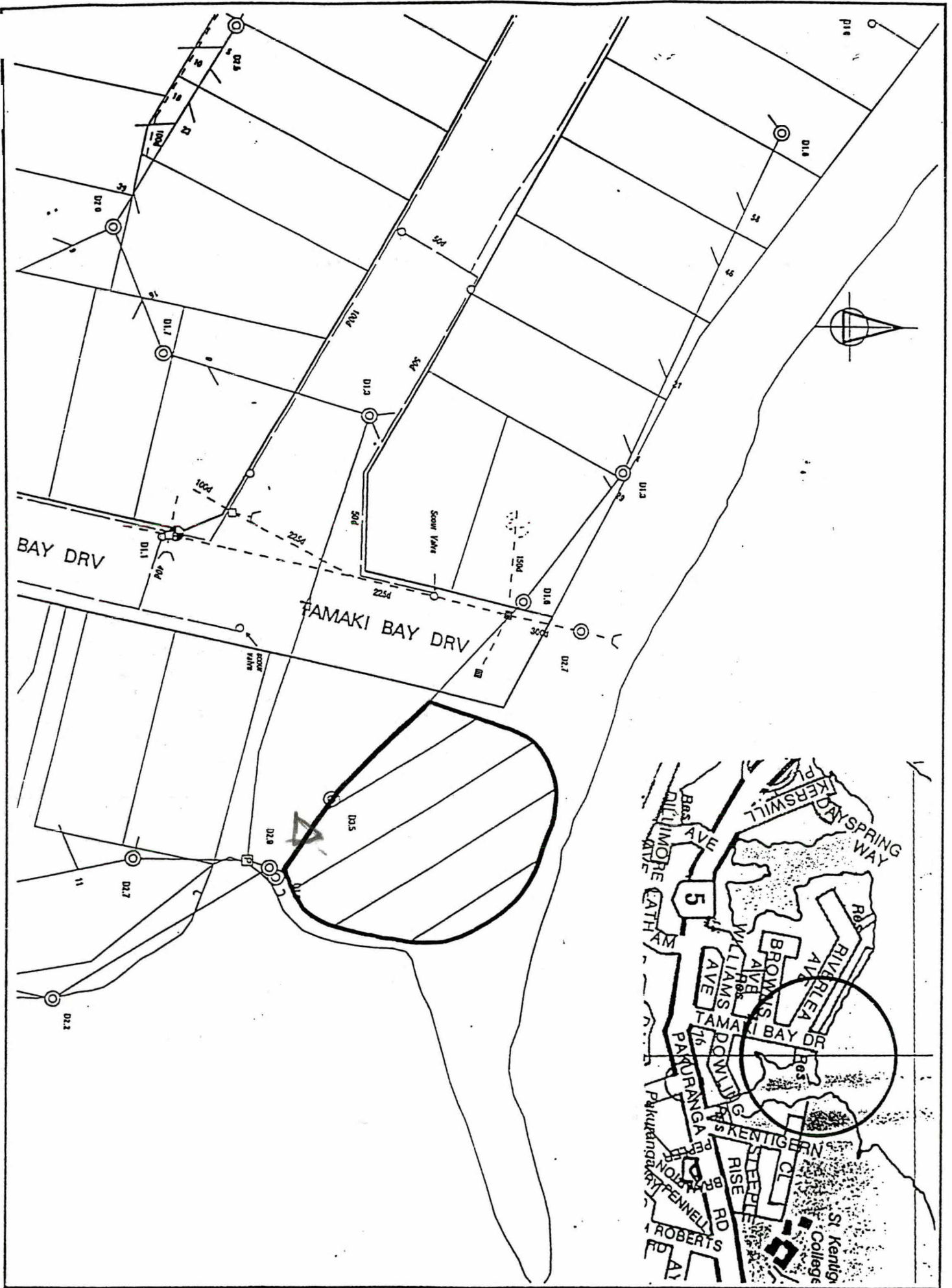
3 copies of


Te Pua Carpark

Contract for signing.

Thanks

Stuart.



MANOKAU

 CONSULTANTS
 Consulting Civil & Structural
 Engineers
 Geotechnical Lab,
 Project Management,
 Contract Documentation
 & Supervision,
 Surveying.
 Telephone (09) 252 0000

TITLE
**RIVERLEA ROAD
 WATER SAMPLING LOCATIONS**
 REV. CHK.

| SIGNED | | DATE |
|---------------|-------------|-------|
| DRAWN | D. Lander | 07/78 |
| CHECKED | A. Robinson | 07/78 |
| N.L. APPROVED | | |

B/K.
03

sh.
22

10d

145 R

On

Lot 9

DP 49029

961m² ?

Δ ✓



TITLE
**HARANIA INLET
 WATER SAMPLING LOCATIONS**

MANUKAU

 CONSULTANTS
 LIMITED

Consulting Civil & Structural
 Engineers
 Geotechnical Lab.
 Project Management
 Contract Documentation
 & Supervision
 Surveying

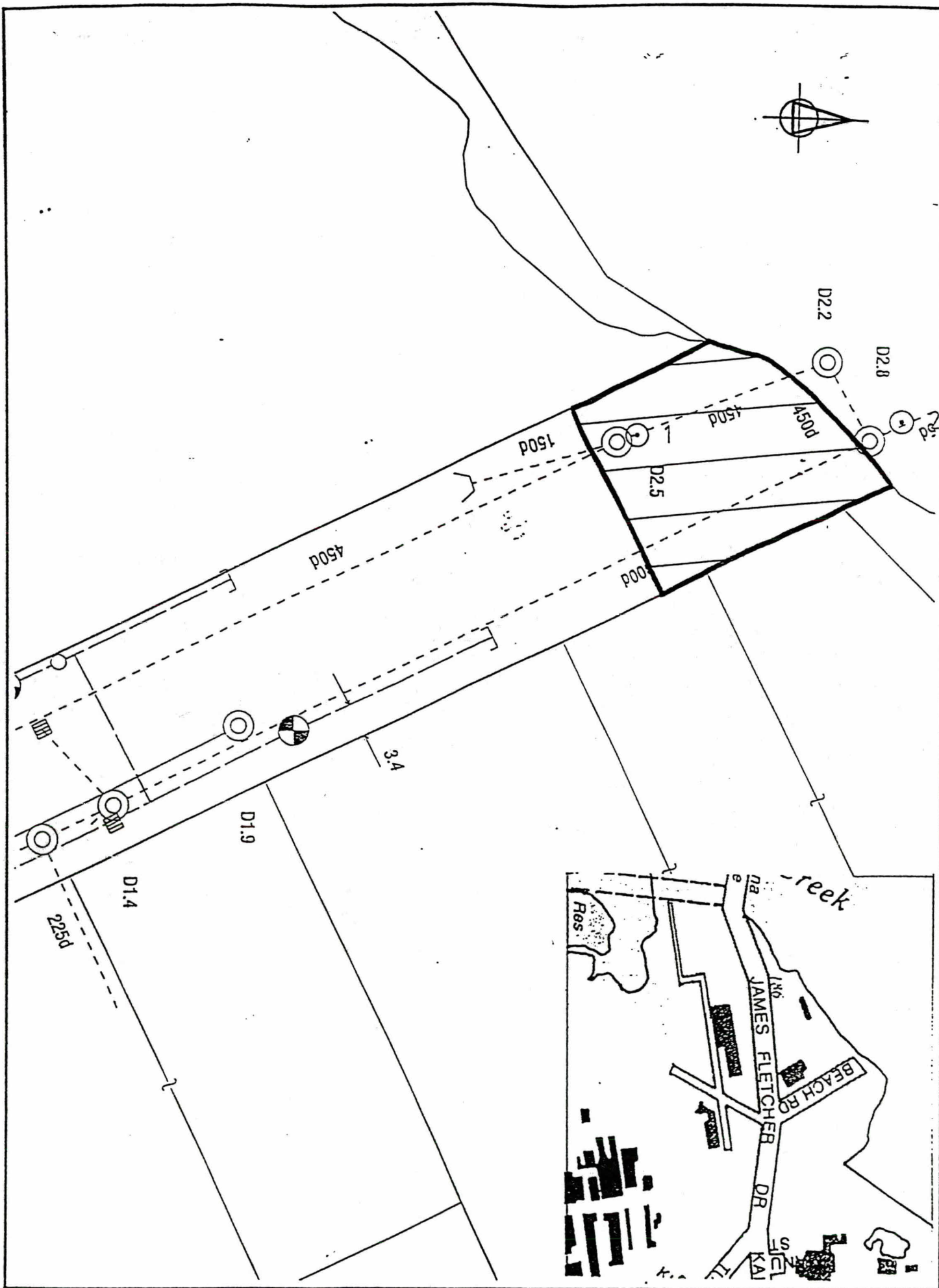
Telephone (09) 232 0999
 Fax (09) 232 8533

REV. CTR.

| REV. | DATE | DESCRIPTION |
|------|------|-------------|
| | | |

| REV. | DATE | DESCRIPTION |
|------|------|-------------|
| | | |

| NO. | DATE | BY | DESCRIPTION |
|---------------|-------|-------------|-------------|
| DRAWN | 02/98 | D. Lender | |
| CHECKED | 02/98 | A. Robinson | |
| M.C. APPROVED | | | |

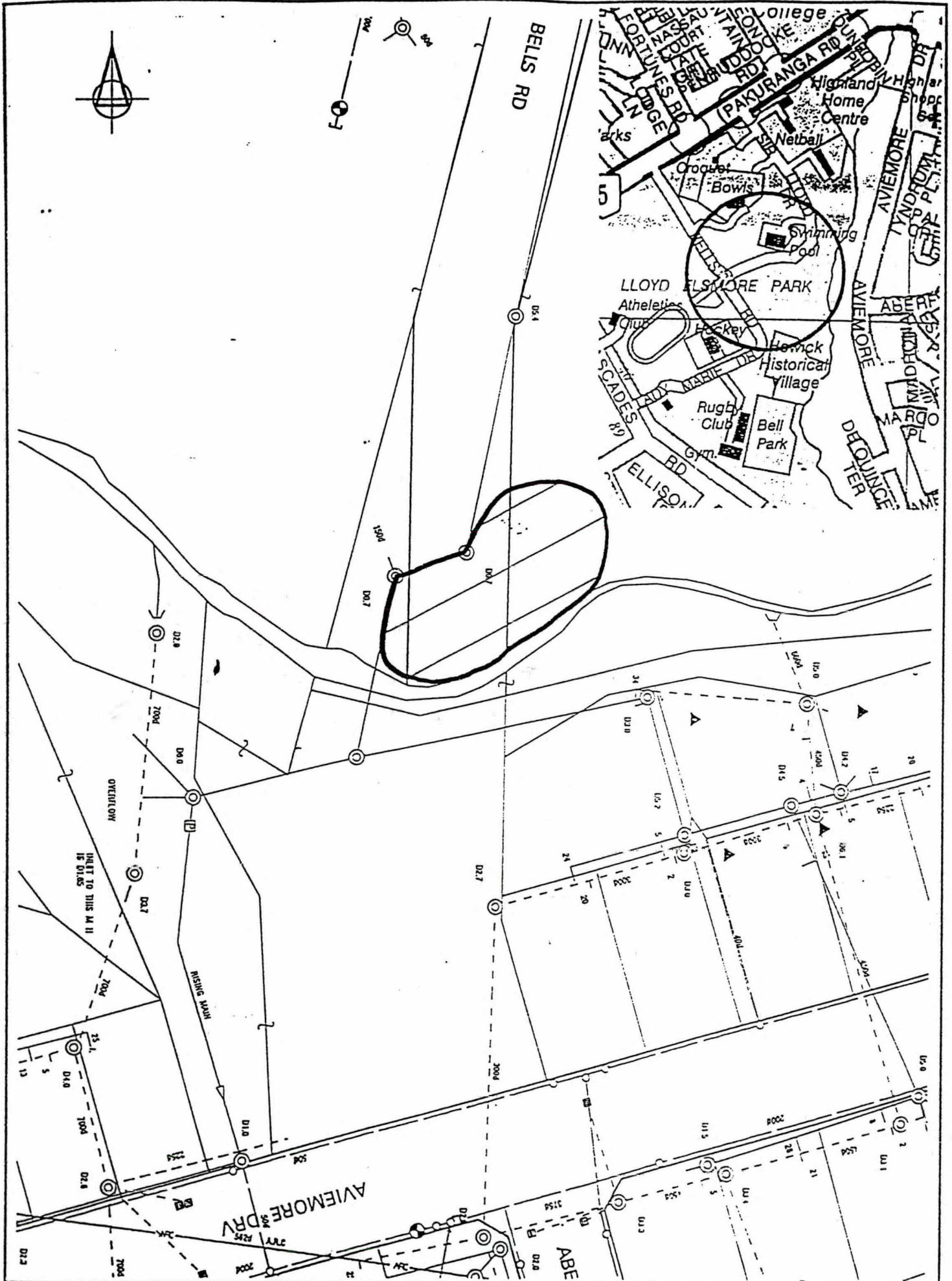


MANUKAU CONSULTANTS
 Consulting Civil & Structural Engineers,
 Geotechnical Ltd.,
 Project Management,
 Contract Administration
 & Supervision,
 Surveying.
 Telephone (06) 262 8999

TITLE
**BEACH ROAD
 WATER SAMPLING LOCATIONS**

REV CMM

| SCALE | | DATE |
|---------------|-------------|-------|
| DRAWN | D. Loner | 02/98 |
| CHECKED | A. Robinson | 02/98 |
| N.L. APPROVED | | |



MANUKAU CONSULTANTS
 Consulting Civil & Structural Engineers,
 Geotechnical Lab,
 Project Management,
 Contract Documentation & Supervision,
 Surveying.
 Telephone (06) 242 8999
 Fax (06) 242 8111

TITLE
**BELLS ROAD
 WATER SAMPLING LOCATIONS**

REV CHG

| | SCALE | DATE |
|-------------|------------|-------|
| DRAWN | D Lander | 02/91 |
| CHECKED | A Robinson | 02/91 |
| M: APPROVED | | |

B/k.

sh.

7P

07

~~13, 14, 15, 16~~

23d, 24b 24d

25

Lot 340

OP 53 226

5160 m²

Δ ✓

914.
08
914.
~~42~~, 43
41a
79

Road Reserve

X

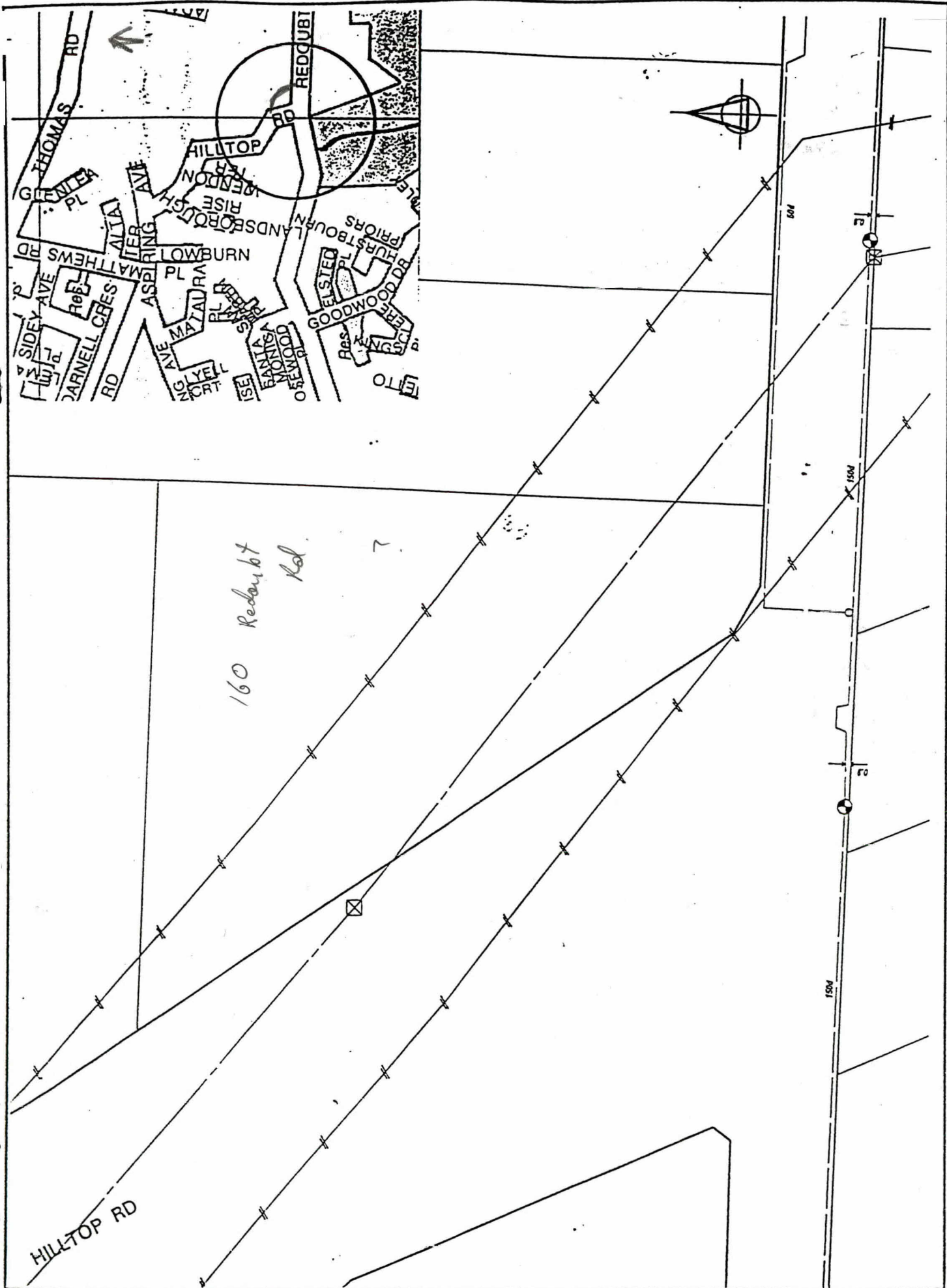
Hydropon ?

Lot 2

DP 44071

8094 m²

X



MANUKAU
CONSULTANTS
 Consulting Civil & Structural
 Engineers
 Geotechnical Lab.
 Project Management
 Contract Documentation
 & Supervision
 Surveying
 Telephone (06) 242 8999

TITLE
HILLTOP ROAD
WATER SAMPLING LOCATIONS

| | SIGNED | DATE |
|---------------|-------------|-------|
| DRAWN | D. Lander | 02/71 |
| CHECKED | A. Robinson | 02/71 |
| M.L. APPROVED | | |

B/K.
01

R.
44, 56, 57,
~~68, 80~~

TP
59, 58

70R

Lot 3 DP 77585

Δ √

2. 1112 ha

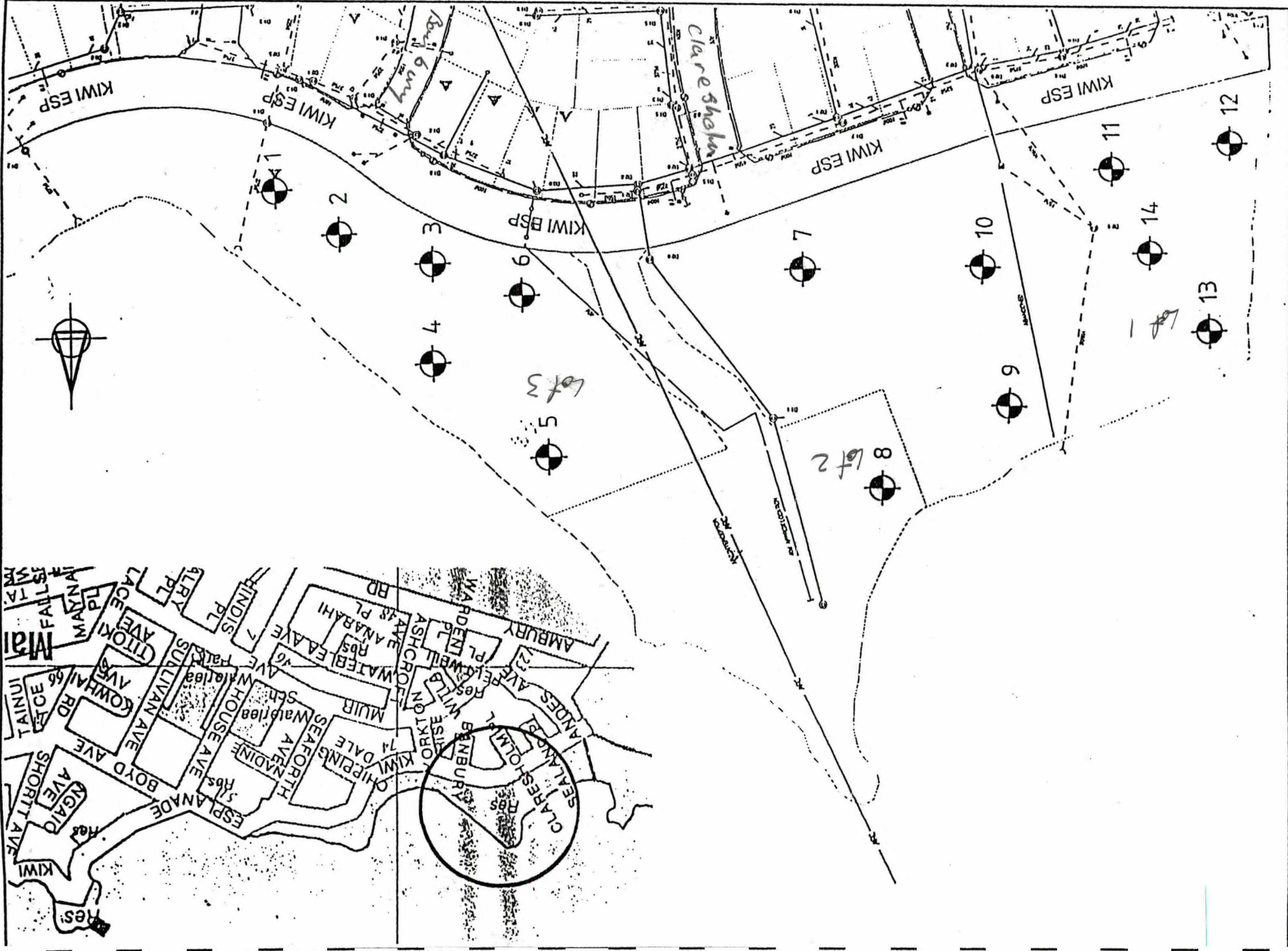
Lot 2 DP 77585

Δ √

1. 2552 ha.

Lot 1 DP 77585

20514 ha. Δ √



| | |
|--------------|-------------|
| SCALE | DATE |
| DRAWN | CHECKED |
| PLC APPROVED | |
| D. Linnert | A. Robinson |
| 07/11 | 07/11 |

TITLE:
MANUKAU YACHT CLUB
WATER SAMPLING LOCATIONS

MANUKAU

 Consulting Civil & Structural Engineers Ltd.
 Project Management
 Contract Administration & Surveying
 Telephone: (09) 252 2822

? Blk Sh.
4 33 49a
7 89

828

Allot 306

SO 38747

Parish of Pakaranga

435 m²

Δ ✓ ?

or is on road reserve?

38

Omaha Pk.

04 62 176.

PT Lot 2

DP 34852

Δ ✓

39.

Allenby Rd.

04 89,90,

27c

Allot 377

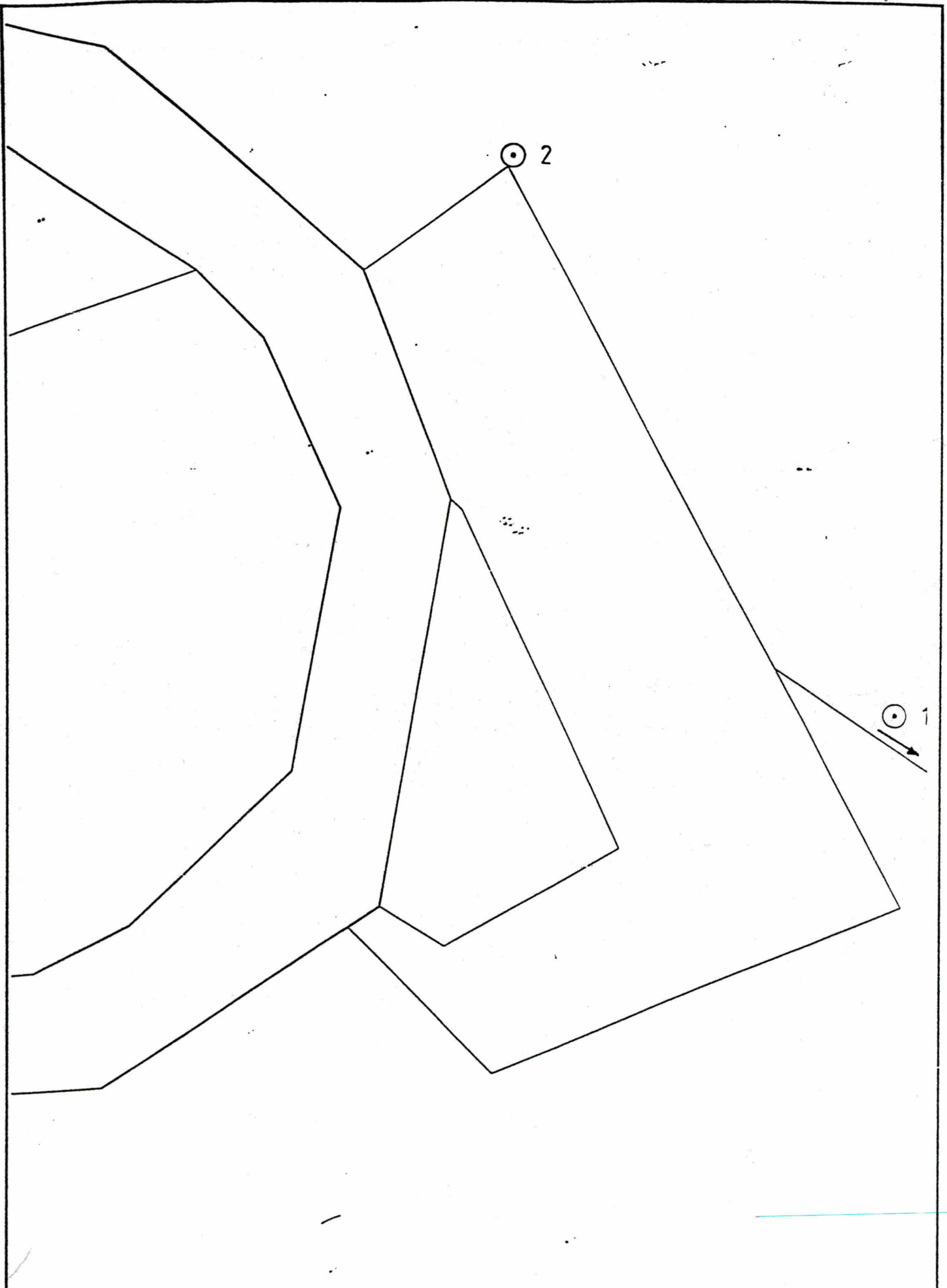
SO 46043

Parish of Manurewa

1.3130 ha.

Δ ✓

(66)



MANUKAU
CONSULTANTS
 LIMITED

Consulting Civil & Structural
 Engineers,
 Geotechnical Lab,
 Project Management,
 Contract Administration
 & Supervision,
 Surveying.

Telephone (08) 262 8999
 Fax (08) 262 8131

TITLE

**MOUNGAMOUNGAROA BRIDGE
 WATER SAMPLING LOCATIONS**

REV. CHK

REV.

| | SIGNED | DATE |
|---------------|-------------|-------|
| DRAWN | D. Lander | 02/78 |
| CHECKED | A. Robinson | 02/78 |
| M.C. APPROVED | | |
| PLAN NO. 38 | | |