

Aerial images may not accurately reflect the actual vegetation cover. Vegetation is plotted as accurately as possible. Unless otherwise stated, project specific vegetation only has been plotted and captured.

Vegetation alteration/removal may be subject to resource consent requirements/conditions. It shall be the client's responsibility to determine whether or not this is the case.

Works within the root zone of trees should be supervised by an appointed works arborist.

Legend

Trees

- Remove
- Retain

Groups

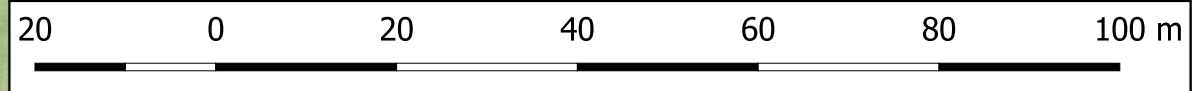
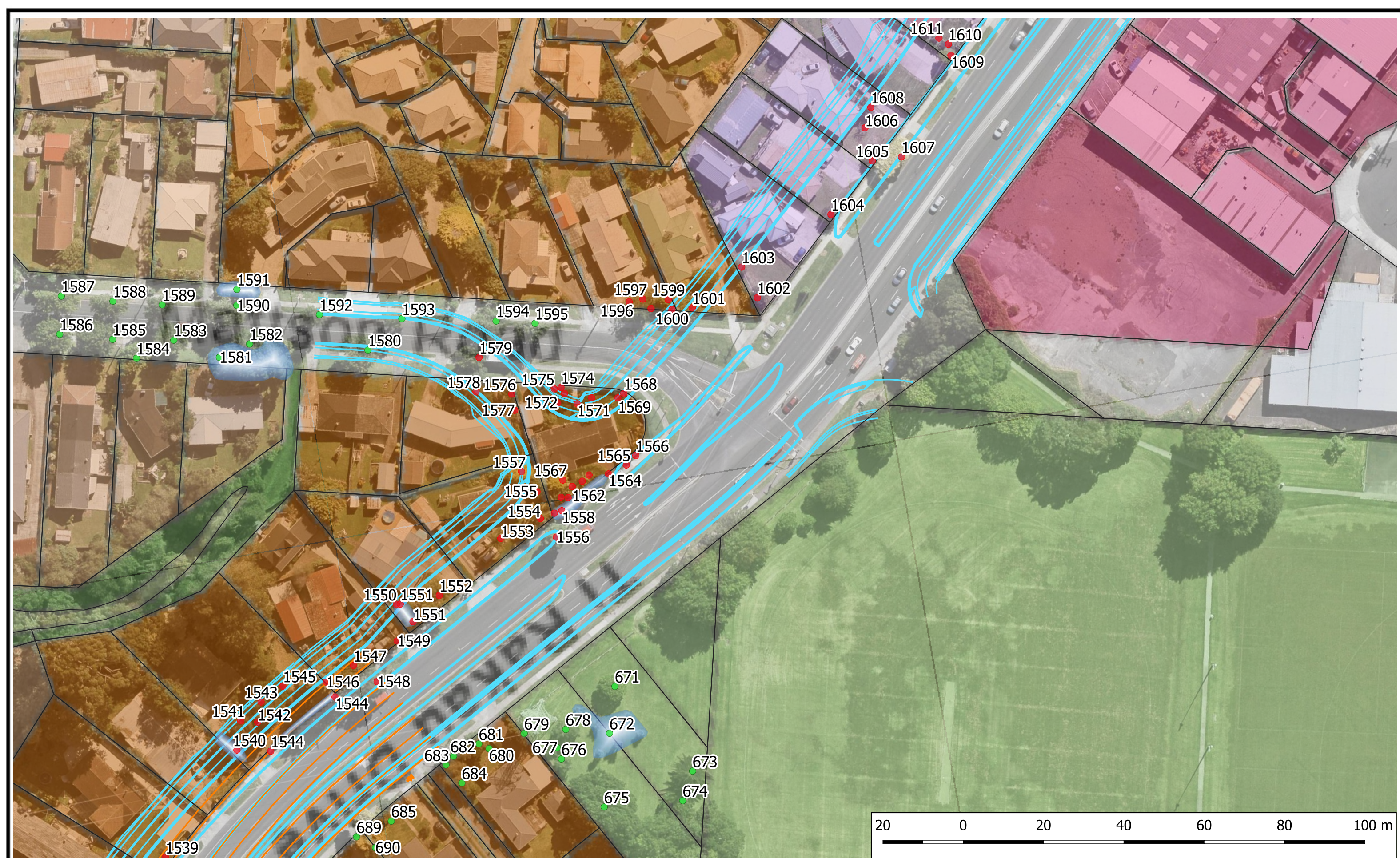
- EB3 Road Design
- EB3 Linemarking



EASTERN BUSWAY 3R

TREE LOCATION PLAN

Requested by		Date
Surveyed by	PVL & LGS	JUL18
Plotted by	LGS	AUG18
Checked by	PVL	AUG18
Drawing number	LGS_36078_12	Rev
		C



Aerial images may not accurately reflect the actual vegetation cover. Vegetation is plotted as accurately as possible. Unless otherwise stated, project specific vegetation only has been plotted and captured.

Vegetation alteration/removal may be subject to resource consent requirements/conditions. It shall be the client's responsibility to determine whether or not this is the case.

Works within the root zone of trees should be supervised by an appointed works arborist.

Legend

Trees

- Remove
- Retain

Groups

- EB3 Road Design
- EB3 Linemarking



EASTERN BUSWAY 3R

TREE LOCATION PLAN

Requested by		Date	
Surveyed by	PVL & LGS		JUL18
Plotted by	LGS		AUG18
Checked by	PVL		AUG18
Drawing number	LGS_36078_13	Rev	C