

SGA Takaanini Level Crossings (TLC).

**Appendix A - Site Context Photos (attachments to the
Supplementary Landscape Assessment).
Te Tupu Ngātahi Supporting Growth Alliance.**

October 2023

Contents.

Viewpoint Location Plan.	3
Viewpoint 01. NoR 1 Spartan Road (A):	4
Viewpoint 02. NoR 1 Spartan Road (B):	6
Viewpoint 03. NoR 1 Manuia Road (A):	8
Viewpoint 04. NoR 1 Manuia Road (B):	10
Viewpoint 05. NoR 1 Manuroa Road (A):	12
Viewpoint 06. NoR 1 Manuroa Road (B):	14
Viewpoint 07. NoR 1 Taka Street (A):	16
Viewpoint 08. NoR 1 Taka Street (B):	18
Viewpoint 09. NoR 2 Walters Road (A):	20
Viewpoint 10. NoR 2 Walters Road (B):	22
Methodology.	25

Document record				
Issue	Revision	Author	QA	Date
Draft	A	MJ	MJ	05.10.23
Final (RC)	B	MJ	SB	09.10.23



Viewpoint Location Plan.

Copyright © Isthmus Group Ltd.
 Job: 4874 Date: 9 October 2023
 Client: Te Tupu Ngātahi Supporting Growth Alliance.
 Aerial Photo Source: Te Tupu Ngātahi ArcGIS Online.
 Issued For: Resource Consent


 Proposed designation boundary.

Dw Nb: Scale: Not to Scale.

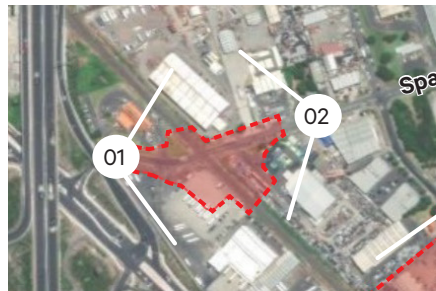
The thin red dashed lines on this location plan (outside those of the five designations) indicate designations not associated with this TLC Project.



Viewpoint 01. NoR 1 Spartan Road (A):

NoR 1 Spartan Road (A): Looking east toward the existing rail crossing along Spartan Road from outside 1 Spartan Road, Takanini.





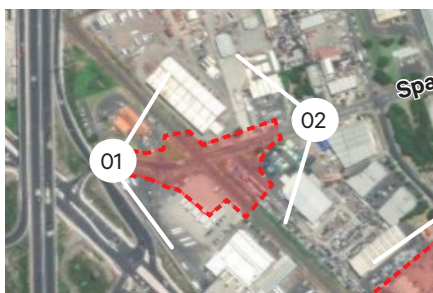
Original Photo MJ | 50mm | DSLR Canon D810 | 12:11hrs 03 October 2023 | 1769988E 5899403N NZTM | Elevation approximately 10m
Reading distance for correct scale: 400mm
Field of View Approximately 110° horizontal (across 2 x A3 pages) & 34° vertical



Viewpoint 02. NoR 1 Spartan Road (B):

NoR 1 Spartan Road (B): Looking west toward the existing level crossing along Spartan Road from outside 29 Spartan Road, Takanini.





Original Photo MJ | 50mm | DSLR Canon D810 | 10:59hrs 03 October 2023 | 1770228E 5899448N NZTM | Elevation approximately 10m
Reading distance for correct scale: 400mm
Field of View Approximately 110° horizontal (across 2 x A3 pages) & 34° vertical



Viewpoint 03. NoR 1 Manuia Road (A):

NoR 1 Manuia Road (A): Looking northeast from the intersection with Challen Close towards Manuia Road, Takanini and existing industrial and commercial development which fronts Great South Road.





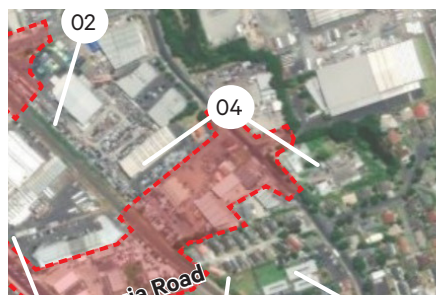
Original Photo MJ | 50mm | DSLR Canon D810 | 12:04hrs 03 October 2023 | 1770199E 5899058N NZTM | Elevation approximately 15m
Reading distance for correct scale: 400mm
Field of View Approximately 110° horizontal (across 2 x A3 pages) & 34° vertical



Viewpoint 04. NoR 1 Manuia Road (B):

NoR 1 Manuia Road (B): Looking south from outside 38 Oakleigh Avenue, Takanini toward existing industrial properties and the location of the proposed designation.





Original Photo MJ | 50mm | DSLR Canon D810 | 11:05hrs 03 October 2023 | 1770410E 5899334N NZTM | Elevation approximately 12m

Reading distance for correct scale: 400mm

Field of View Approximately 110° horizontal (across 2 x A3 pages) & 34° vertical