



Nor 1 ASH
Legend

- Protected Premises and Facilities
- NZS 6806 Assessment Area





Dycant Ln

Waitakere Rd

Pomona Rd

Waitakere Rd

Manham Rd

4

710

191

682

723

194

670

212

2 646

214

646

218

8 6

637

679

9

609


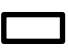
Nor 1 ASH
Legend

- Protected Premises and Facilities
- NZS 6806 Assessment Area







Nor 1 ASH
 Legend

-  Protected Premises and Facilities
-  NZS 6806 Assessment Area



Nor 1 ASH
Legend

-  Protected Premises and Facilities
-  NZS 6806 Assessment Area



284

210

208

196

198

218

222

2-6

13

3

1

179

177

171

175

173

17

15

11

9

5

181

175

171

173

2

4

19

6

15

15

172

Twin Coast Hwy

Twin Coast Hwy

SH 16

16

Brigham Creek

Ngongeretapa Stream

Twin Coast Hwy

Twin Coast Hwy

Brigham Creek Rd

Brigham Creek Rd

Brigham Creek

Fred Taylor Dr

Northwestern Mtwy

23



Nor 1 ASH
Legend

- Protected Premises and Facilities
- NZS 6806 Assessment Area

Meters
0 55 110 220

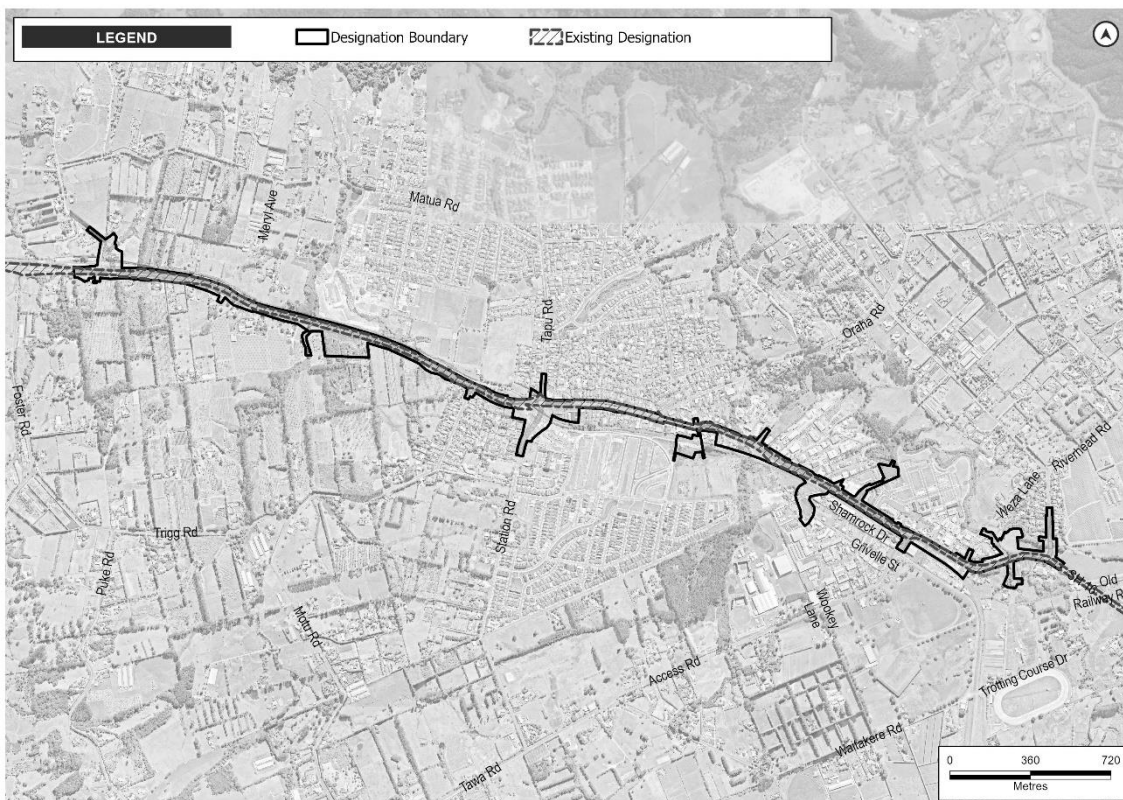
Schedule 1: General Accordance Plans and Information

Project Description

The proposed work is the construction, operation, and maintenance of an upgrade to a state highway in Kumeu-Huapai, from the Matua Road intersection to the intersection with Riverhead Road, including active transport facilities and associated infrastructure. The proposed work is shown in the following Concept Plan and includes:

- (a) An upgraded transport corridor and active transport facilities;
- (b) Associated works including intersections, bridges, embankments, retaining, culverts, stormwater management systems;
- (c) Changes to local roads, where the proposed work intersects with local roads; and
- (d) Construction activities, including vegetation removal, construction compounds, laydown areas, bridge works area, construction traffic management and the re-grade of driveways.


Concept Plan




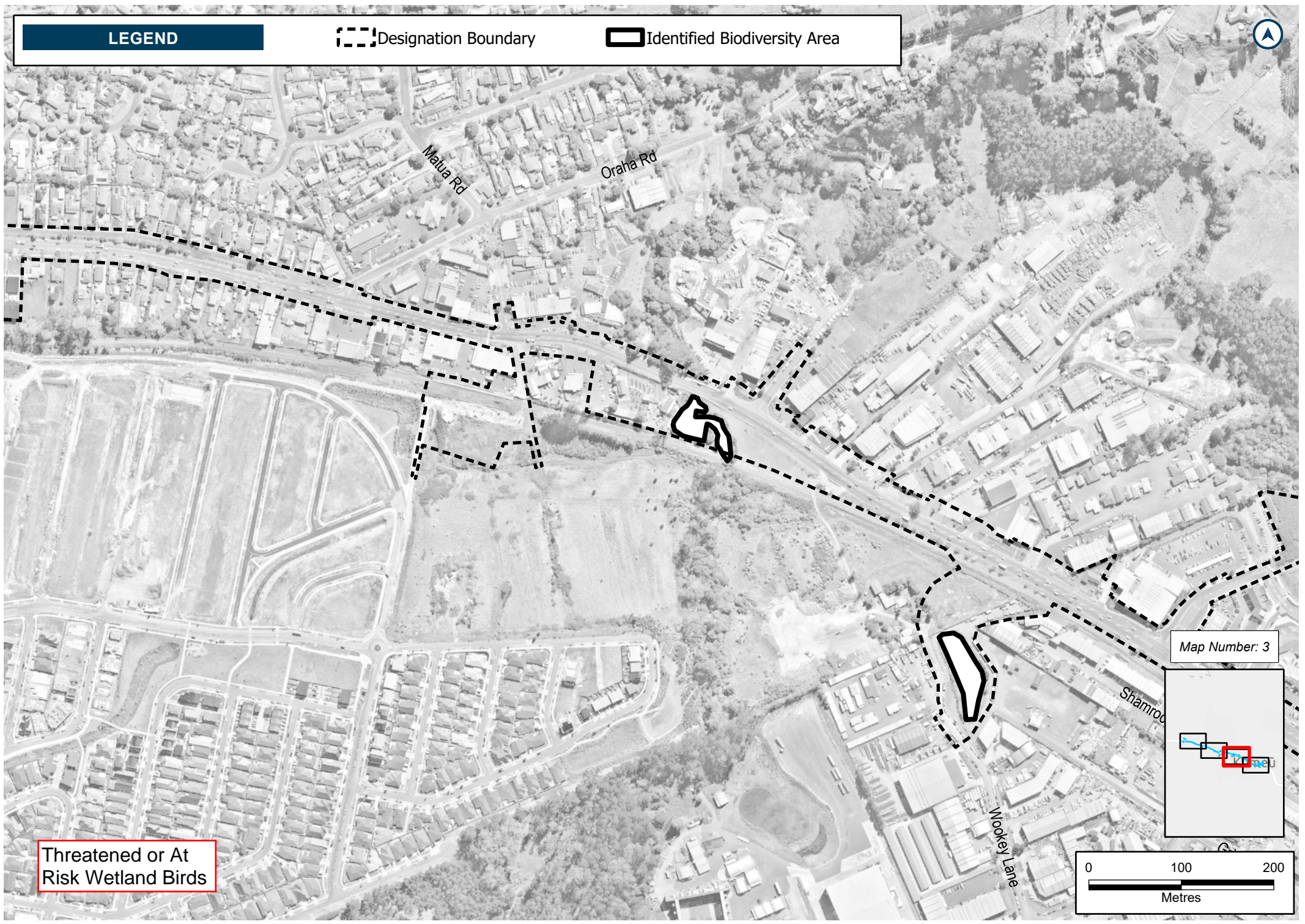
Schedule 2: Identified Biodiversity Areas



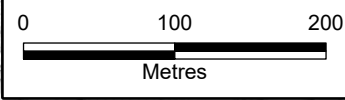
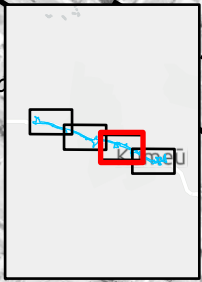
LEGEND

 Designation Boundary

 Identified Biodiversity Area




Map Number: 3




Threatened or At Risk Wetland Birds



LEGEND

 Designation Boundary

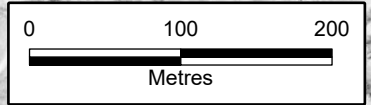
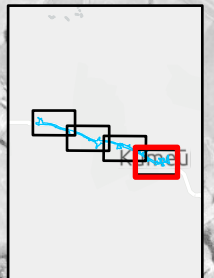
 Identified Biodiversity Area



Name of Map: SGA-EC-NW-035-Strategic-SH16-Bird-Mitigation
 Path: P:\381\3810534\T0102\ Data\1_Data Processing\50_P1us1689_NW_Ecology_Mitigation\SGA_NW_Ecology_Mitigation.aprx

Threatened or At Risk Wetland Birds


Map Number: 4

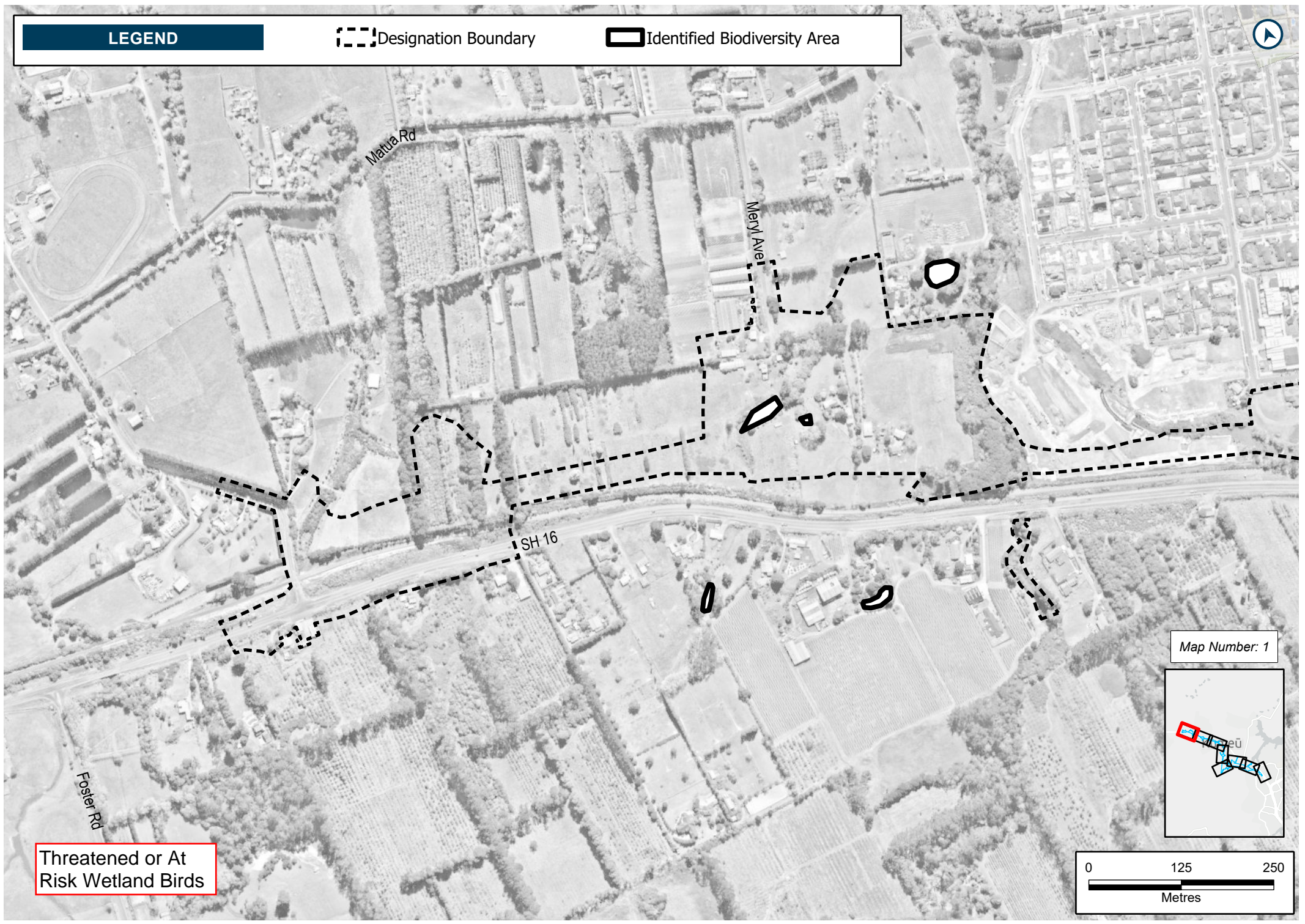


Schedule 2: Identified Biodiversity Areas

LEGEND

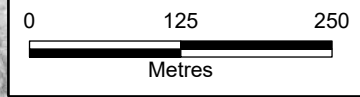
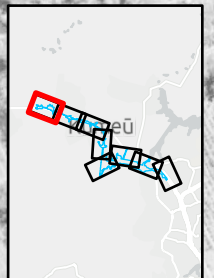
 Designation Boundary

 Identified Biodiversity Area



Threatened or At Risk Wetland Birds

Map Number: 1



Name of Map: SGA-EC-NW-034-Strategic-RTN-Bird-Mitigation
Path: P:\381\3810334\T0102 Data\1 Data Processing 550 P\us6689_NW_Ecology_Mitigation\SGA_NW_Ecology_Mitigation.aprx