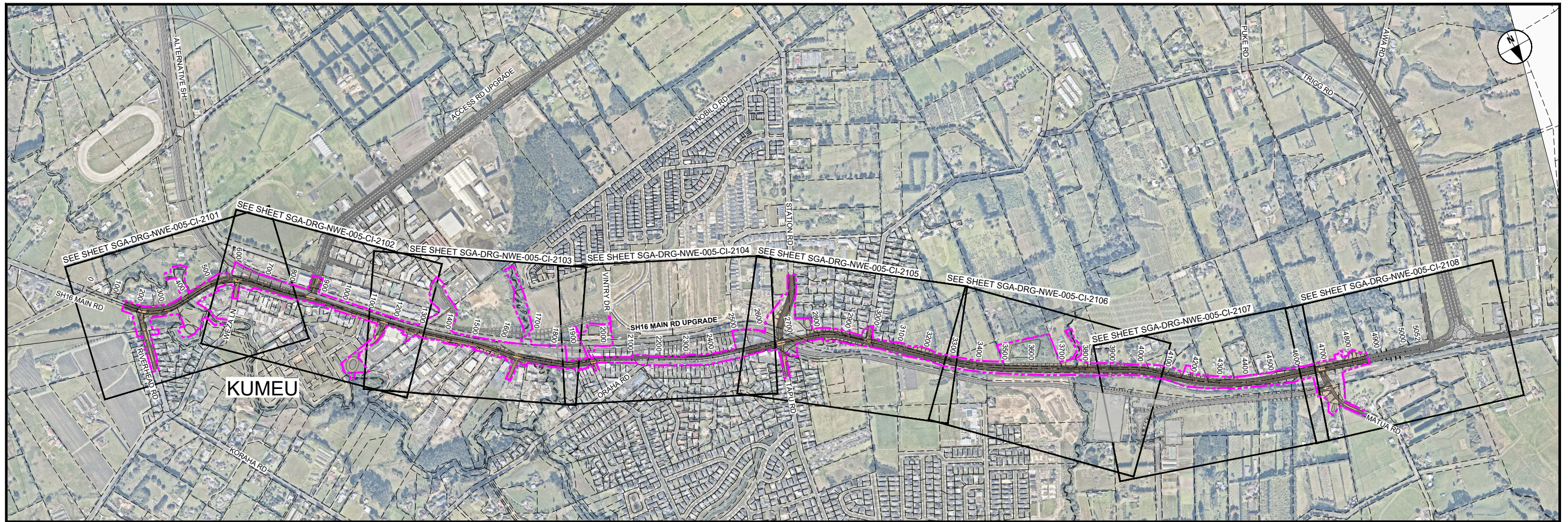


C:\working\paccom_4510_au\scen\delatorre\paccom_4510_199\SGA-DRG-NWE-005-GE-2000.dwg



NORTH WEST STRATEGIC - SH16 MAIN RD UPGRADE LOCATION PLAN
Scale: NTS

NORTH WEST STRATEGIC - SH16 MAIN RD UPGRADE		
DRAWING No.		REVISION
SGA-DRG-NWE-005-GE-2000	LOCATION PLAN, GENERAL NOTES, DRAWING LIST	B
SGA-DRG-NWE-005-CI-2101	GENERAL ARRANGEMENT PLAN - SHEET 1 OF 8	B
SGA-DRG-NWE-005-CI-2102	GENERAL ARRANGEMENT PLAN - SHEET 2 OF 8	B
SGA-DRG-NWE-005-CI-2103	GENERAL ARRANGEMENT PLAN - SHEET 3 OF 8	B
SGA-DRG-NWE-005-CI-2104	GENERAL ARRANGEMENT PLAN - SHEET 4 OF 8	B
SGA-DRG-NWE-005-CI-2105	GENERAL ARRANGEMENT PLAN - SHEET 5 OF 8	B
SGA-DRG-NWE-005-CI-2106	GENERAL ARRANGEMENT PLAN - SHEET 6 OF 8	B
SGA-DRG-NWE-005-CI-2107	GENERAL ARRANGEMENT PLAN - SHEET 7 OF 8	B
SGA-DRG-NWE-005-CI-2108	GENERAL ARRANGEMENT PLAN - SHEET 8 OF 8	B

GENERAL NOTES

GENERAL

- 1.1 THE GENERAL ARRANGEMENT (GA) PLANS PROVIDE PRELIMINARY / CONCEPT LEVEL DESIGN REQUIRED TO IDENTIFY THE DESIGNATION FOOTPRINT FOR THE CONSTRUCTION AND OPERATION OF THE PERMANENT WORKS.
- 1.2 THE GA PLANS INDICATE HOW EACH CORRIDOR TIES INTO THE EXISTING AND FUTURE TRANSPORT NETWORK.

STORMWATER

- 2.1 THE STORMWATER DESIGN IS INDICATIVE.
- 2.2 STORMWATER POND SIZES ARE INDICATIVE AND DESIGNED IN ACCORDANCE WITH AUCKLAND COUNCIL'S GUIDELINE DOCUMENT GD01: STORMWATER MANAGEMENT DEVICES GUIDE.

ORIGINAL SIZE A1
0 10 20 30 40 50 60 70 80 90 100mm



"AERIAL IMAGERY SUPPLIED BY NEARMAP AUSTRALIA PTY LTD"

NOT FOR CONSTRUCTION

REV	ISSUED FOR NOTICE OF REQUIREMENT LODGEMENT	DRAFT ISSUE FOR REVIEW	DESIGN REVIEW	APPROVED	DATE
B			JDT DEC 2022		
A			VDLT JULY 2021		
				B. BUSNARDO	07.12.2022



SUPPORTING GROWTH PROGRAMME
NORTH WEST STRATEGIC - SH16 MAIN ROAD UPGRADE (NoR S2)
Drawing Title: LOCATION PLAN, GENERAL NOTES & DRAWING LIST

Drawing Status:		Revision	
FOR LODGEMENT		B	
Drawing Date:	07.12.2022	Drawing No.:	SGA-DRG-NWE-005-GE-2000
A1 Scales:	1:7500	A3 Scales:	1:15000
Discipline: GENERAL			

C:\pwworking\arcam_data\autocad\data\arcam.com\20207183\SGA_DRG-NWE-005-CI-2100_COMBINED.dwg

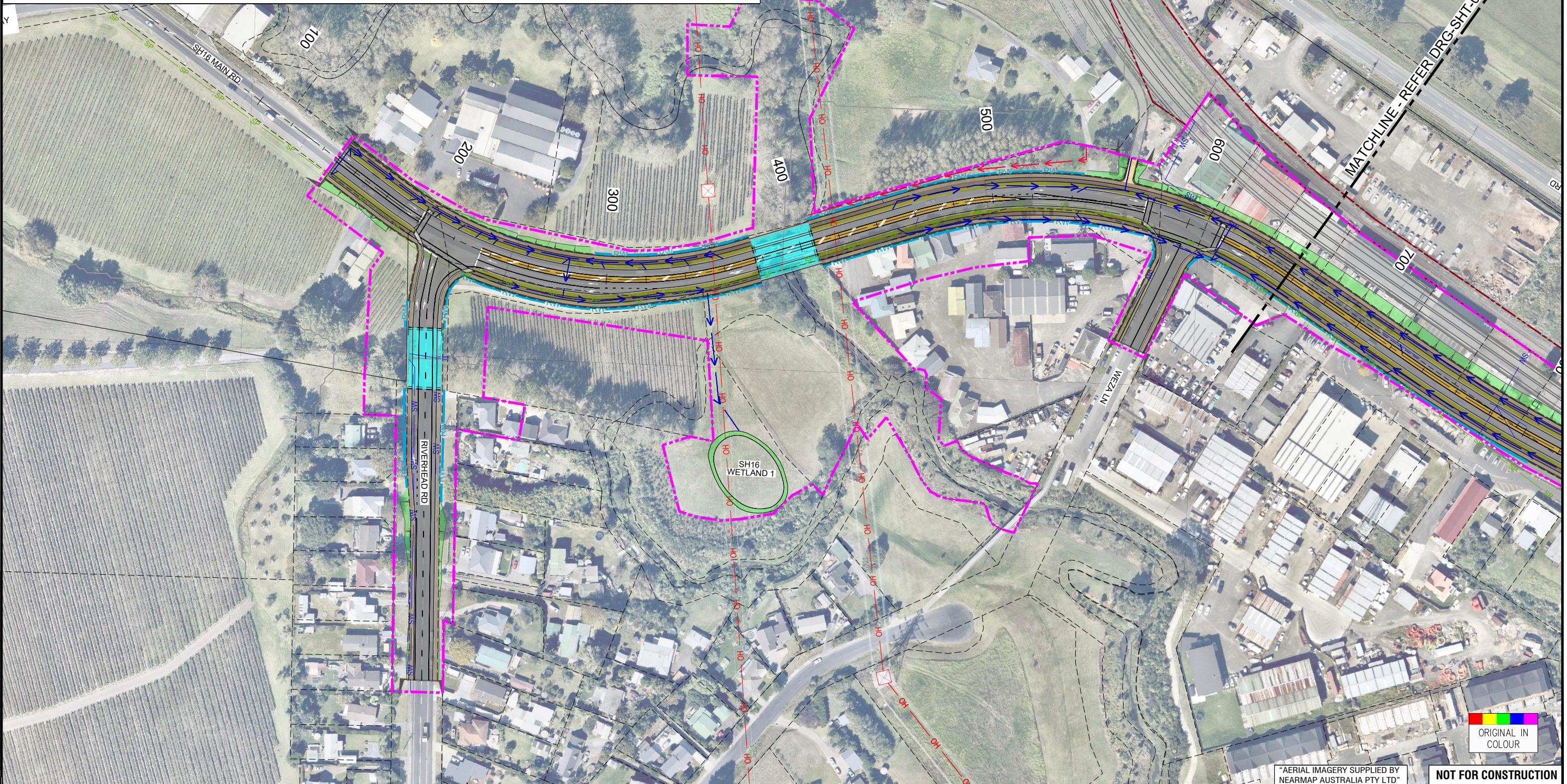
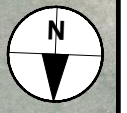
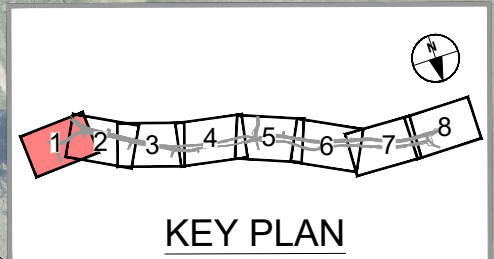
LEGEND GENERAL

- CONTROL LINE AND CHAINAGE
- EXISTING PROPERTY BOUNDARY
- EXISTING KIWIRAIL DESIGNATION
- PROPOSED DESIGNATION BOUNDARY
- PROPOSED ROAD CORRIDOR
- PROPOSED FOOTPATH
- PROPOSED CYCLEWAY
- PROPOSED BERM
- PROPOSED FLUSH MEDIAN, RAISED MEDIAN OR TRAFFIC ISLAND
- FILL BATTER
- CUT BATTER
- PROPOSED CROSSING OVER STREAM OR ROAD
- PROPOSED SWALE
- PROPOSED ACTIVE MODE CORRIDOR
- PROPOSED RETAINING WALL

LEGEND STORMWATER

- PROPOSED WETLAND
- PROPOSED CULVERT (SUBJECT TO RESOURCE CONSENT)
- PROPOSED SW PIPE
- PROPOSED SW CHANNEL
- PROPOSED SWALE
- PROPOSED DIVERSION DRAIN
- PROPOSED OVERLAND FLOW PATH
- EXISTING CULVERT
- EXISTING OVERLAND FLOW PATH
- GAS (MAIN)
- STORMWATER (MAIN)
- WATERCARE (MAIN)
- WASTE WATER (MAIN)
- TRANSPOWER OVERHEAD LINES
- TRANSPOWER PYLON
- SPARK INTERNATIONAL CABLE

LEGEND EXISTING UTILITIES



ORIGINAL SIZE A1
100mm
90
80
70
60
50
40
30
20
10
0

ORIGINAL IN COLOUR

"AERIAL IMAGERY SUPPLIED BY NEARMAP AUSTRALIA PTY LTD"

NOT FOR CONSTRUCTION

REV	DATE	APPROVED	BY	DATE
A	DEC 2022	B. BUSNARDO		07.12.2022
B	JULY 2021			
DESIGN REVIEW		R. KUBALA		16.07.2021
DESIGN		R. BELTRAN		16.07.2021
DRAWING CHECK		J. DELA TORRE		16.07.2021
DRAWN		V. DELA TORRE		16.07.2021
SURVEYED		N/A		



SUPPORTING GROWTH PROGRAMME
NORTH WEST STRATEGIC - SH16 MAIN ROAD UPGRADE (NoR S2)
 Drawing Title: GENERAL ARRANGEMENT LAYOUT PLAN
 SHEET 1 OF 8

Drawing Date: 07.12.2022		FOR LODGEMENT	
A1 Scale: 1:1000	A3 Scale: 1:2000		
Discipline: CIVIL			
Drawing No: SGA-DRG-NWE-005-CI-2101		Revision: B	