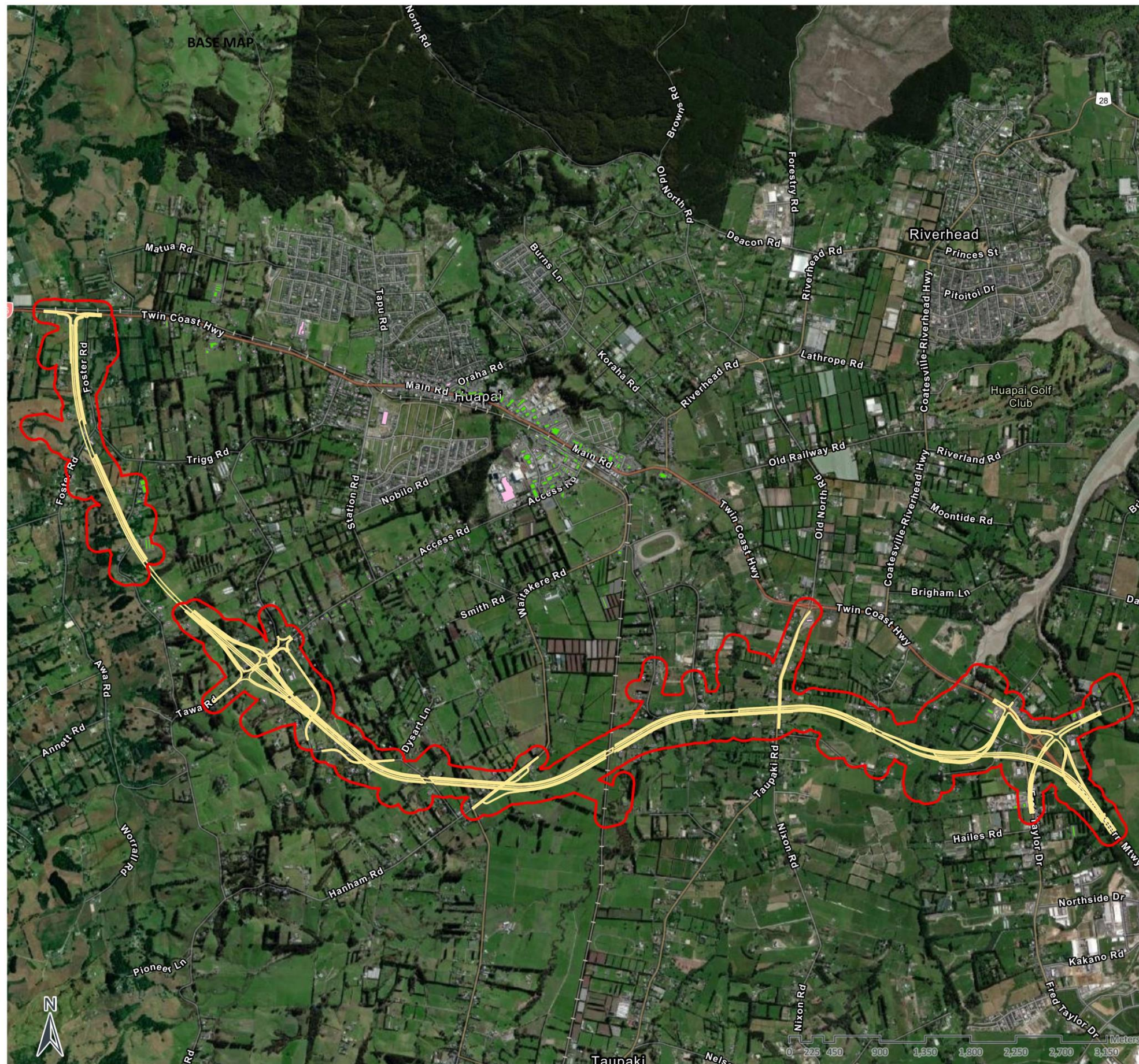


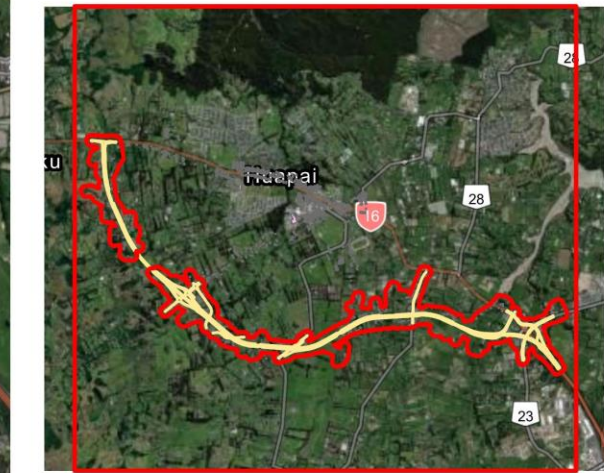
1 Setback Distances – Construction Noise

1.1 NoR S1



SUPPORTING GROWTH PROGRAMME NORTH WEST NOR S1 ASH CONSTRUCTION NOISE ENVELOPES

- Noise Envelopes
- Nor1 ASH
- Buildings**
- Non PPF
- PPF
- Building to be removed



Client: SGA
Authors: owen.ii
Date of Issue: 7/10/2022 4:58 pm

Drawing Details:
 Scale: 1:36,000
 Projection: WGS 1984 Web Mercator Auxiliary Sphere
 Map Rotation: 0°

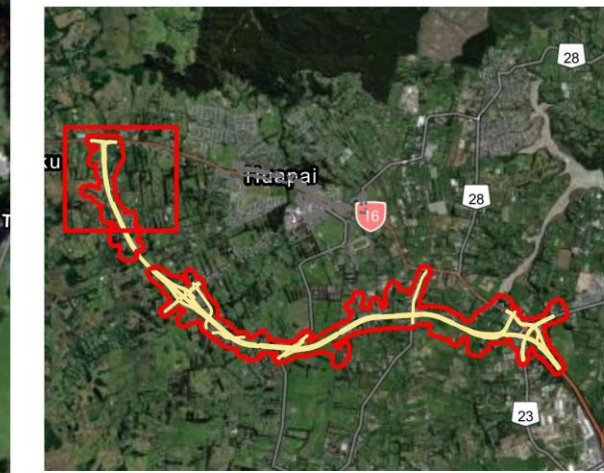
SoundPLAN Details:
 Calculation Method: CoRTN 1988
 Result File Name: RRKL3010.res

Map Notes / Comments:
 This map is for graphical purposes only. While every effort has been made to ensure that the data are accurate and reliable, Marshall Day Acoustics cannot assume liability for errors or omissions in the data graphically represented. The noise contours were obtained by interpolations of calculated grid points (spacing typically 5-25m), with varying interpolation accuracy. Precise noise levels at specific locations, can be made available at request if not included in the projects point receiver calculations.



**SUPPORTING GROWTH PROGRAMME
NORTH WEST NOR S1 ASH
CONSTRUCTION NOISE ENVELOPES**

- Noise Envelopes
- Nor1 ASH
- Buildings**
- Non PPF
- PPF
- Building to be removed



Client: SGA
Authors: owen.li
Date of Issue: 7/10/2022 4:58 pm

Drawing Details:
 Scale: 1:8,000
 Projection: WGS 1984 Web Mercator Auxiliary Sphere
 Map Rotation: 0°

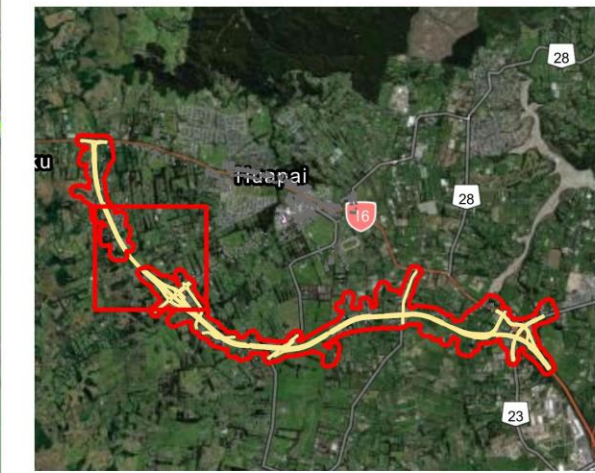
SoundPLAN Details:
 Calculation Method: CoRTN 1988
 Result File Name: RRKL3010.res

Map Notes / Comments:
 This map is for graphical purposes only. While every effort has been made to ensure that the data are accurate and reliable, Marshall Day Acoustics cannot assume liability for errors or omissions in the data graphically represented.
 The noise contours were obtained by interpolations of calculated grid points (spacing typically 5-25m), with varying interpolation accuracy. Precise noise levels at specific locations, can be made available at request if not included in the projects point receiver calculations.



**SUPPORTING GROWTH PROGRAMME
NORTH WEST NOR S1 ASH
CONSTRUCTION NOISE ENVELOPES**

- Noise Envelopes
- Nor1 ASH
- Buildings**
- Non PPF
- PPF
- Building to be removed



Client: SGA
Authors: owen.li
Date of Issue: 7/10/2022 4:58 pm

Drawing Details:
 Scale: 1:8,000
 Projection: WGS 1984 Web Mercator Auxiliary Sphere
 Map Rotation: 0°

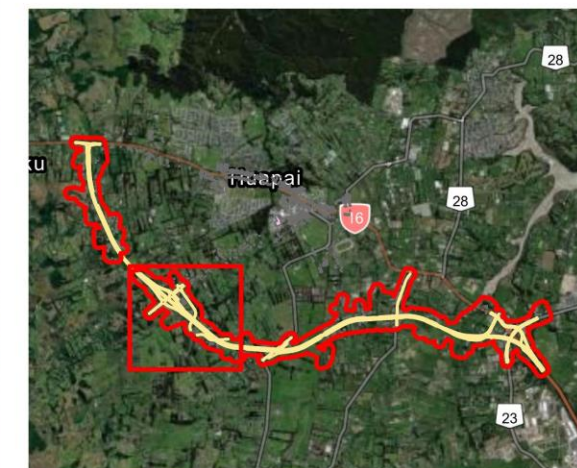
SoundPLAN Details:
 Calculation Method: CoRTN 1988
 Result File Name: RRKL3010.res

Map Notes / Comments:
 This map is for graphical purposes only. While every effort has been made to ensure that the data are accurate and reliable, Marshall Day Acoustics cannot assume liability for errors or omissions in the data graphically represented.
 The noise contours were obtained by interpolations of calculated grid points (spacing typically 5-25m), with varying interpolation accuracy. Precise noise levels at specific locations, can be made available at request if not included in the projects point receiver calculations.



**SUPPORTING GROWTH PROGRAMME
NORTH WEST NOR S1 ASH
CONSTRUCTION NOISE ENVELOPES**

- Noise Envelopes
- Nor1 ASH
- Buildings**
- Non PPF
- PPF
- Building to be removed



Client: SGA
Authors: owen.li
Date of Issue: 7/10/2022 4:58 pm

Drawing Details:
 Scale: 1:8,000
 Projection: WGS 1984 Web Mercator Auxiliary Sphere
 Map Rotation: 0°

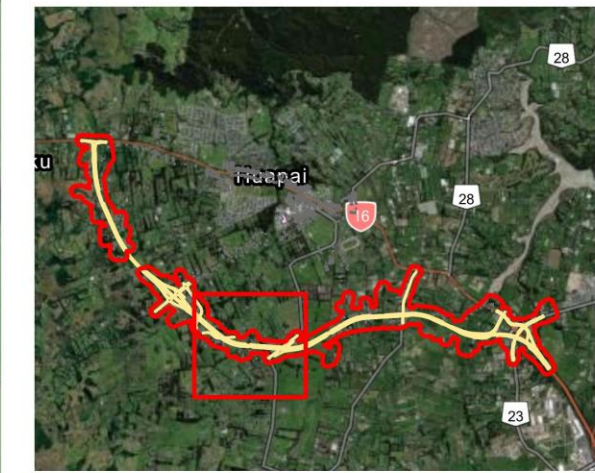
SoundPLAN Details:
 Calculation Method: CoRTN 1988
 Result File Name: RRKL3010.res

Map Notes / Comments:
 This map is for graphical purposes only. While every effort has been made to ensure that the data are accurate and reliable, Marshall Day Acoustics cannot assume liability for errors or omissions in the data graphically represented.
 The noise contours were obtained by interpolations of calculated grid points (spacing typically 5-25m), with varying interpolation accuracy. Precise noise levels at specific locations, can be made available at request if not included in the projects point receiver calculations.



**SUPPORTING GROWTH PROGRAMME
NORTH WEST NOR S1 ASH
CONSTRUCTION NOISE ENVELOPES**

- Noise Envelopes
- Nor1 ASH
- Buildings**
- Non PPF
- PPF
- Building to be removed



Client: SGA
Authors: owen.li
Date of Issue: 7/10/2022 4:58 pm

Drawing Details:
 Scale: 1:8,000
 Projection: WGS 1984 Web Mercator Auxiliary Sphere
 Map Rotation: 0°

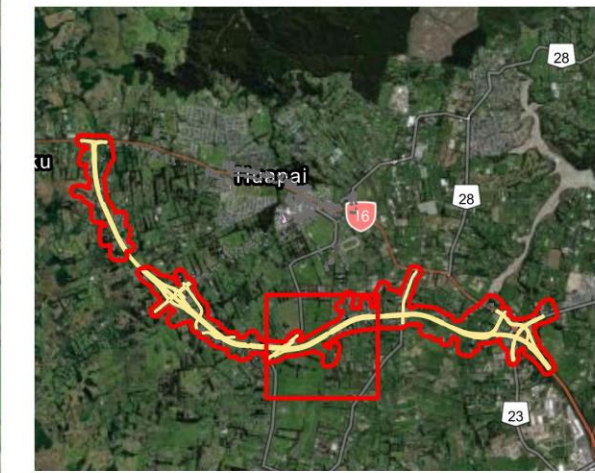
SoundPLAN Details:
 Calculation Method: CoRTN 1988
 Result File Name: RRL3010.res

Map Notes / Comments:
 This map is for graphical purposes only. While every effort has been made to ensure that the data are accurate and reliable, Marshall Day Acoustics cannot assume liability for errors or omissions in the data graphically represented.
 The noise contours were obtained by interpolations of calculated grid points (spacing typically 5-25m), with varying interpolation accuracy. Precise noise levels at specific locations, can be made available at request if not included in the projects point receiver calculations.



**SUPPORTING GROWTH PROGRAMME
NORTH WEST NOR S1 ASH
CONSTRUCTION NOISE ENVELOPES**

- Noise Envelopes
 - Nor1 ASH
- Buildings**
- Non PPF
 - PPF
 - Building to be removed



Client: SGA
Authors: owen.li
Date of Issue: 7/10/2022 4:58 pm

Drawing Details:
 Scale: 1:8,000
 Projection: WGS 1984 Web Mercator Auxiliary Sphere
 Map Rotation: 0°

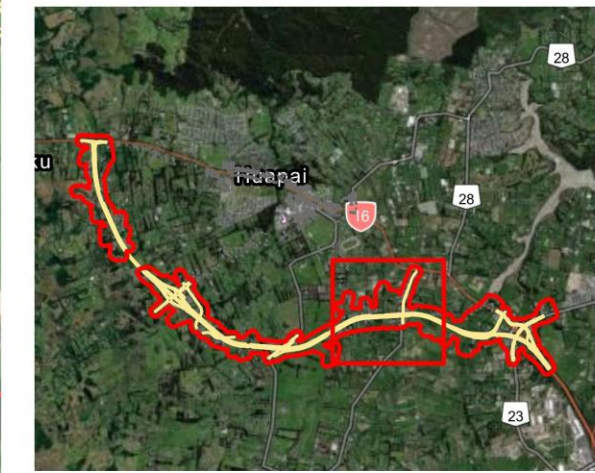
SoundPLAN Details:
 Calculation Method: CoRTN 1988
 Result File Name: RRKL3010.res

Map Notes / Comments:
 This map is for graphical purposes only. While every effort has been made to ensure that the data are accurate and reliable, Marshall Day Acoustics cannot assume liability for errors or omissions in the data graphically represented.
 The noise contours were obtained by interpolations of calculated grid points (spacing typically 5-25m), with varying interpolation accuracy. Precise noise levels at specific locations, can be made available at request if not included in the projects point receiver calculations.



**SUPPORTING GROWTH PROGRAMME
NORTH WEST NOR S1 ASH
CONSTRUCTION NOISE ENVELOPES**

- Noise Envelopes
- Nor1 ASH
- Buildings**
- Non PPF
- PPF
- Building to be removed



Client: SGA
Authors: owen.li
Date of Issue: 7/10/2022 4:58 pm

Drawing Details:
 Scale: 1:8,000
 Projection: WGS 1984 Web Mercator Auxiliary Sphere
 Map Rotation: 0°

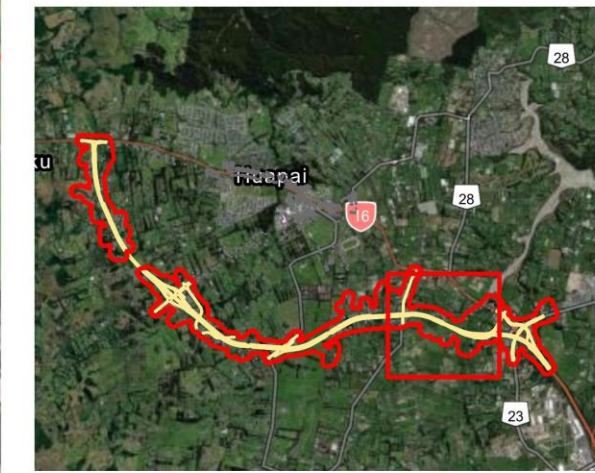
SoundPLAN Details:
 Calculation Method: CoRTN 1988
 Result File Name: RRKL3010.res

Map Notes / Comments:
 This map is for graphical purposes only. While every effort has been made to ensure that the data are accurate and reliable, Marshall Day Acoustics cannot assume liability for errors or omissions in the data graphically represented.
 The noise contours were obtained by interpolations of calculated grid points (spacing typically 5-25m), with varying interpolation accuracy. Precise noise levels at specific locations, can be made available at request if not included in the projects point receiver calculations.



**SUPPORTING GROWTH PROGRAMME
NORTH WEST NOR S1 ASH
CONSTRUCTION NOISE ENVELOPES**

- Noise Envelopes
- Nor1 ASH
- Buildings**
- Non PPF
- PPF
- Building to be removed



Client: SGA
Authors: owen.li
Date of Issue: 7/10/2022 4:58 pm

Drawing Details:
 Scale: 1:8,000
 Projection: WGS 1984 Web Mercator Auxiliary Sphere
 Map Rotation: 0°

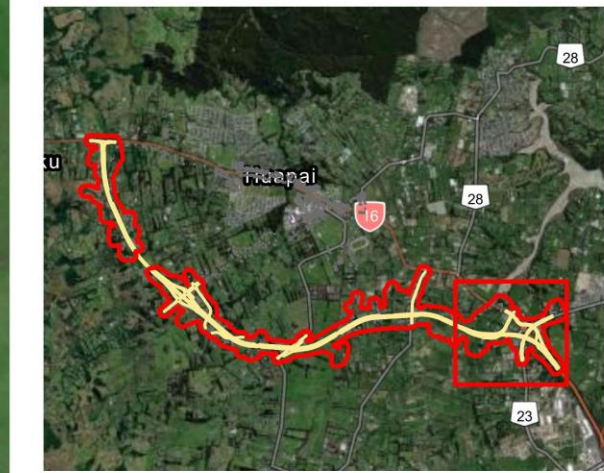
SoundPLAN Details:
 Calculation Method: CoRTN 1988
 Result File Name: RRKL3010.res

Map Notes / Comments:
 This map is for graphical purposes only. While every effort has been made to ensure that the data are accurate and reliable, Marshall Day Acoustics cannot assume liability for errors or omissions in the data graphically represented.
 The noise contours were obtained by interpolations of calculated grid points (spacing typically 5-25m), with varying interpolation accuracy. Precise noise levels at specific locations, can be made available at request if not included in the projects point receiver calculations.



**SUPPORTING GROWTH PROGRAMME
NORTH WEST NOR S1 ASH
CONSTRUCTION NOISE ENVELOPES**

- Noise Envelopes
 - Nor1 ASH
- Buildings**
- Non PPF
 - PPF
 - Building to be removed



Client: SGA
Authors: owen.li
Date of Issue: 7/10/2022 4:58 pm

Drawing Details:
 Scale: 1:8,000
 Projection: WGS 1984 Web Mercator Auxiliary Sphere
 Map Rotation: 0°

SoundPLAN Details:
 Calculation Method: CoRTN 1988
 Result File Name: RRKL3010.res

Map Notes / Comments:
 This map is for graphical purposes only. While every effort has been made to ensure that the data are accurate and reliable, Marshall Day Acoustics cannot assume liability for errors or omissions in the data graphically represented.
 The noise contours were obtained by interpolations of calculated grid points (spacing typically 5-25m), with varying interpolation accuracy. Precise noise levels at specific locations, can be made available at request if not included in the projects point receiver calculations.

1.2 NoR S2



**SUPPORTING GROWTH PROGRAMME
NORTH WEST NOR S2 SH16
CONSTRUCTION NOISE ENVELOPES**

- Noise Envelopes
- Nor2 SH16
- Buildings**
- Non PPF
- PPF
- Building to be removed



Client: SGA
Authors: owen.li
Date of Issue: 7/10/2022 4:58 pm

Drawing Details:
 Scale: 1:20,000
 Projection: WGS 1984 Web Mercator Auxiliary Sphere
 Map Rotation: 0°

SoundPLAN Details:
 Calculation Method: CoRTN 1988
 Result File Name: RRL3010.res

Map Notes / Comments:
 This map is for graphical purposes only. While every effort has been made to ensure that the data are accurate and reliable, Marshall Day Acoustics cannot assume liability for errors or omissions in the data graphically represented.
 The noise contours were obtained by interpolations of calculated grid points (spacing typically 5-25m), with varying interpolation accuracy. Precise noise levels at specific locations, can be made available at request if not included in the projects point receiver calculations.



**SUPPORTING GROWTH PROGRAMME
NORTH WEST NOR S2 SH16
CONSTRUCTION NOISE ENVELOPES**

- Noise Envelopes
- Nor2 SH16
- Buildings**
- Non PPF
- PPF
- Building to be removed



Client: SGA
Authors: owen.li
Date of Issue: 7/10/2022 4:58 pm

Drawing Details:
 Scale: 1:8,000
 Projection: WGS 1984 Web Mercator Auxiliary Sphere
 Map Rotation: 0°

SoundPLAN Details:
 Calculation Method: CoRTN 1988
 Result File Name: RRKL3010.res

Map Notes / Comments:
 This map is for graphical purposes only. While every effort has been made to ensure that the data are accurate and reliable, Marshall Day Acoustics cannot assume liability for errors or omissions in the data graphically represented.
 The noise contours were obtained by interpolations of calculated grid points (spacing typically 5-25m), with varying interpolation accuracy. Precise noise levels at specific locations, can be made available at request if not included in the projects point receiver calculations.



SUPPORTING GROWTH PROGRAMME NORTH WEST NOR S2 SH16 CONSTRUCTION NOISE ENVELOPES

- Noise Envelopes
- Nor2 SH16
- Buildings**
- Non PPF
- PPF
- Building to be removed



Client: SGA
Authors: owen.li
Date of Issue: 7/10/2022 4:58 pm

Drawing Details:
 Scale: 1:8,000
 Projection: WGS 1984 Web Mercator Auxiliary Sphere
 Map Rotation: 0°

SoundPLAN Details:
 Calculation Method: CoRTN 1988
 Result File Name: RRKL3010.res

Map Notes / Comments:
 This map is for graphical purposes only. While every effort has been made to ensure that the data are accurate and reliable, Marshall Day Acoustics cannot assume liability for errors or omissions in the data graphically represented.
 The noise contours were obtained by interpolations of calculated grid points (spacing typically 5-25m), with varying interpolation accuracy. Precise noise levels at specific locations, can be made available at request if not included in the projects point receiver calculations.



**SUPPORTING GROWTH PROGRAMME
NORTH WEST NOR S2 SH16
CONSTRUCTION NOISE ENVELOPES**

- Noise Envelopes
- Nor2 SH16
- Buildings**
- Non PPF
- PPF
- Building to be removed



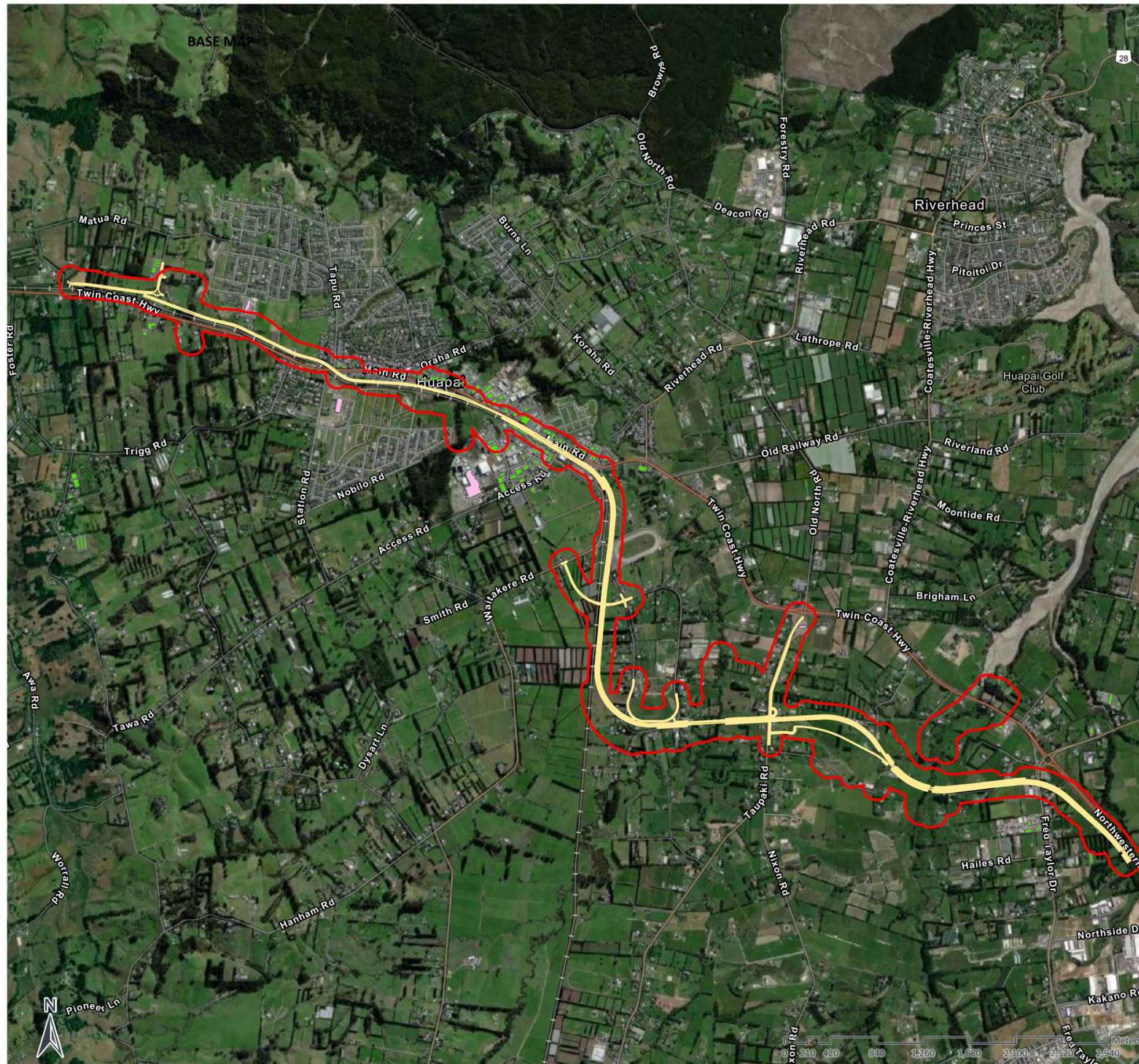
Client: SGA
Authors: owen.li
Date of Issue: 7/10/2022 4:58 pm

Drawing Details:
 Scale: 1:8,000
 Projection: WGS 1984 Web Mercator Auxiliary Sphere
 Map Rotation: 0°

SoundPLAN Details:
 Calculation Method: CoRTN 1988
 Result File Name: RRL3010.res

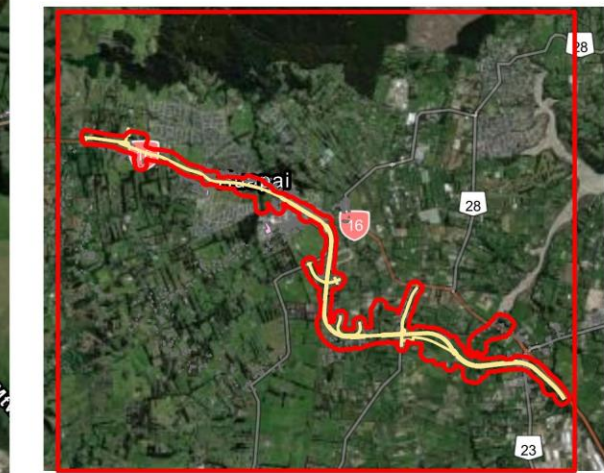
Map Notes / Comments:
 This map is for graphical purposes only. While every effort has been made to ensure that the data are accurate and reliable, Marshall Day Acoustics cannot assume liability for errors or omissions in the data graphically represented.
 The noise contours were obtained by interpolations of calculated grid points (spacing typically 5-25m), with varying interpolation accuracy. Precise noise levels at specific locations, can be made available at request if not included in the projects point receiver calculations.

1.3 NoR S3



SUPPORTING GROWTH PROGRAMME NORTH WEST NOR S3 RTC CONSTRUCTION NOISE ENVELOPES

- Noise Envelopes
- Nor3 RTC
- Buildings**
- Non PPF
- PPF
- Building to be removed



Client: SGA
Authors: owen.li
Date of Issue: 7/10/2022 4:58 pm

Drawing Details:
 Scale: 1:33,000
 Projection: WGS 1984 Web Mercator Auxiliary Sphere
 Map Rotation: 0°

SoundPLAN Details:
 Calculation Method: CoRTN 1988
 Result File Name: RRKL3010.res

Map Notes / Comments:
 This map is for graphical purposes only. While every effort has been made to ensure that the data are accurate and reliable, Marshall Day Acoustics cannot assume liability for errors or omissions in the data graphically represented.
 The noise contours were obtained by interpolations of calculated grid points (spacing typically 5-25m), with varying interpolation accuracy. Precise noise levels at specific locations, can be made available at request if not included in the projects point receiver calculations.



**SUPPORTING GROWTH PROGRAMME
NORTH WEST NOR S3 RTC
CONSTRUCTION NOISE ENVELOPES**

- Noise Envelopes
- Nor3 RTC
- Buildings**
- Non PPF
- PPF
- Building to be removed



Client: SGA
Authors: owen.li
Date of Issue: 7/10/2022 4:58 pm

Drawing Details:
 Scale: 1:8,000
 Projection: WGS 1984 Web Mercator Auxiliary Sphere
 Map Rotation: 0°

SoundPLAN Details:
 Calculation Method: CoRTN 1988
 Result File Name: RRKL3010.res

Map Notes / Comments:
 This map is for graphical purposes only. While every effort has been made to ensure that the data are accurate and reliable, Marshall Day Acoustics cannot assume liability for errors or omissions in the data graphically represented.
 The noise contours were obtained by interpolations of calculated grid points (spacing typically 5-25m), with varying interpolation accuracy. Precise noise levels at specific locations, can be made available at request if not included in the projects point receiver calculations.



SUPPORTING GROWTH PROGRAMME NORTH WEST NOR S3 RTC CONSTRUCTION NOISE ENVELOPES

- Noise Envelopes
 - Nor3 RTC
- Buildings**
- Non PPF
 - PPF
 - Building to be removed

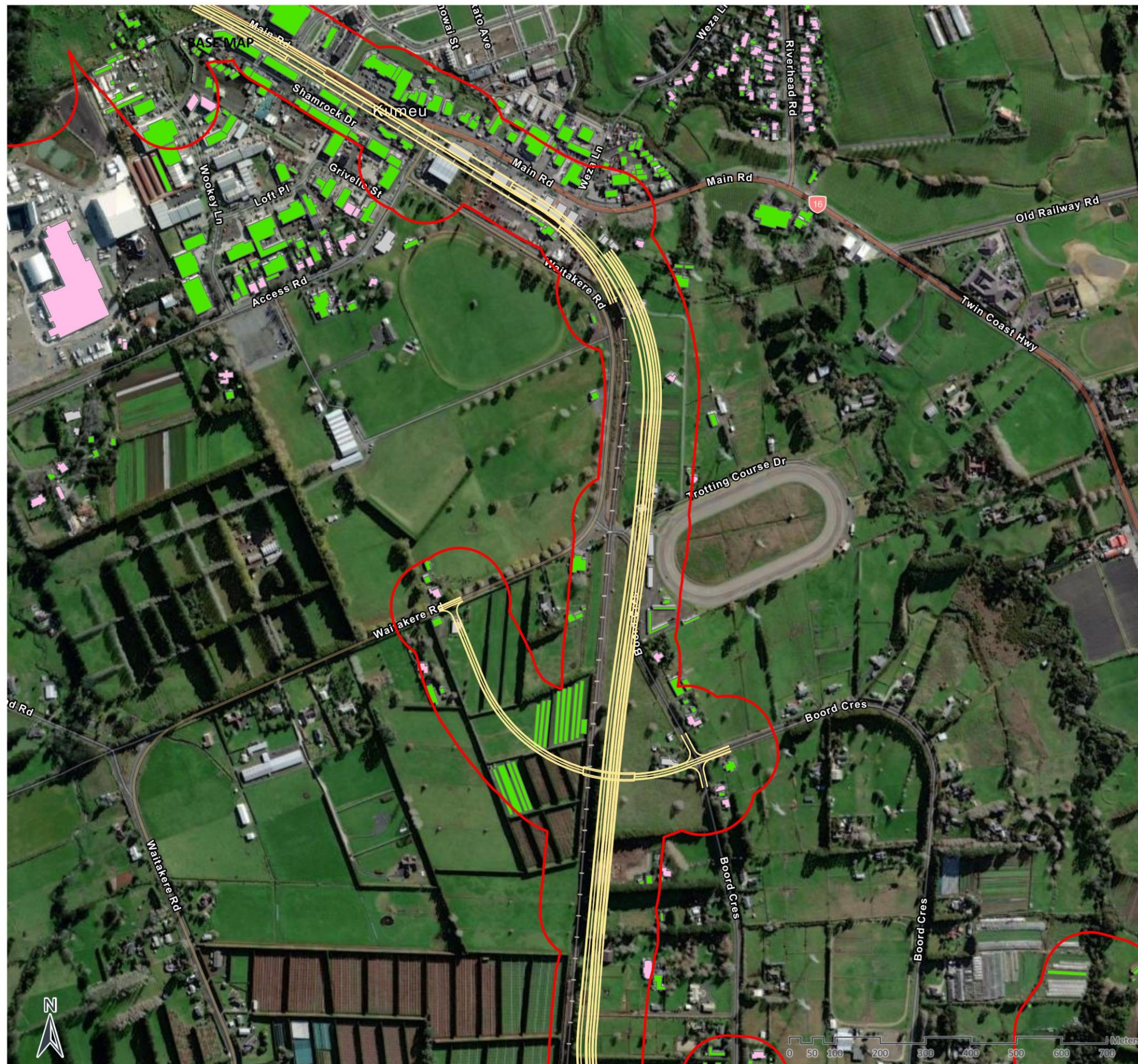


Client: SGA
Authors: owen.li
Date of Issue: 7/10/2022 4:58 pm

Drawing Details:
 Scale: 1:8,000
 Projection: WGS 1984 Web Mercator Auxiliary Sphere
 Map Rotation: 0°

SoundPLAN Details:
 Calculation Method: CoRTN 1988
 Result File Name: RRL3010.res

Map Notes / Comments:
 This map is for graphical purposes only. While every effort has been made to ensure that the data are accurate and reliable, Marshall Day Acoustics cannot assume liability for errors or omissions in the data graphically represented.
 The noise contours were obtained by interpolations of calculated grid points (spacing typically 5-25m), with varying interpolation accuracy. Precise noise levels at specific locations, can be made available at request if not included in the projects point receiver calculations.



**SUPPORTING GROWTH PROGRAMME
NORTH WEST NOR S3 RTC
CONSTRUCTION NOISE ENVELOPES**

- Noise Envelopes
- Nor3 RTC
- Buildings**
- Non PPF
- PPF
- Building to be removed

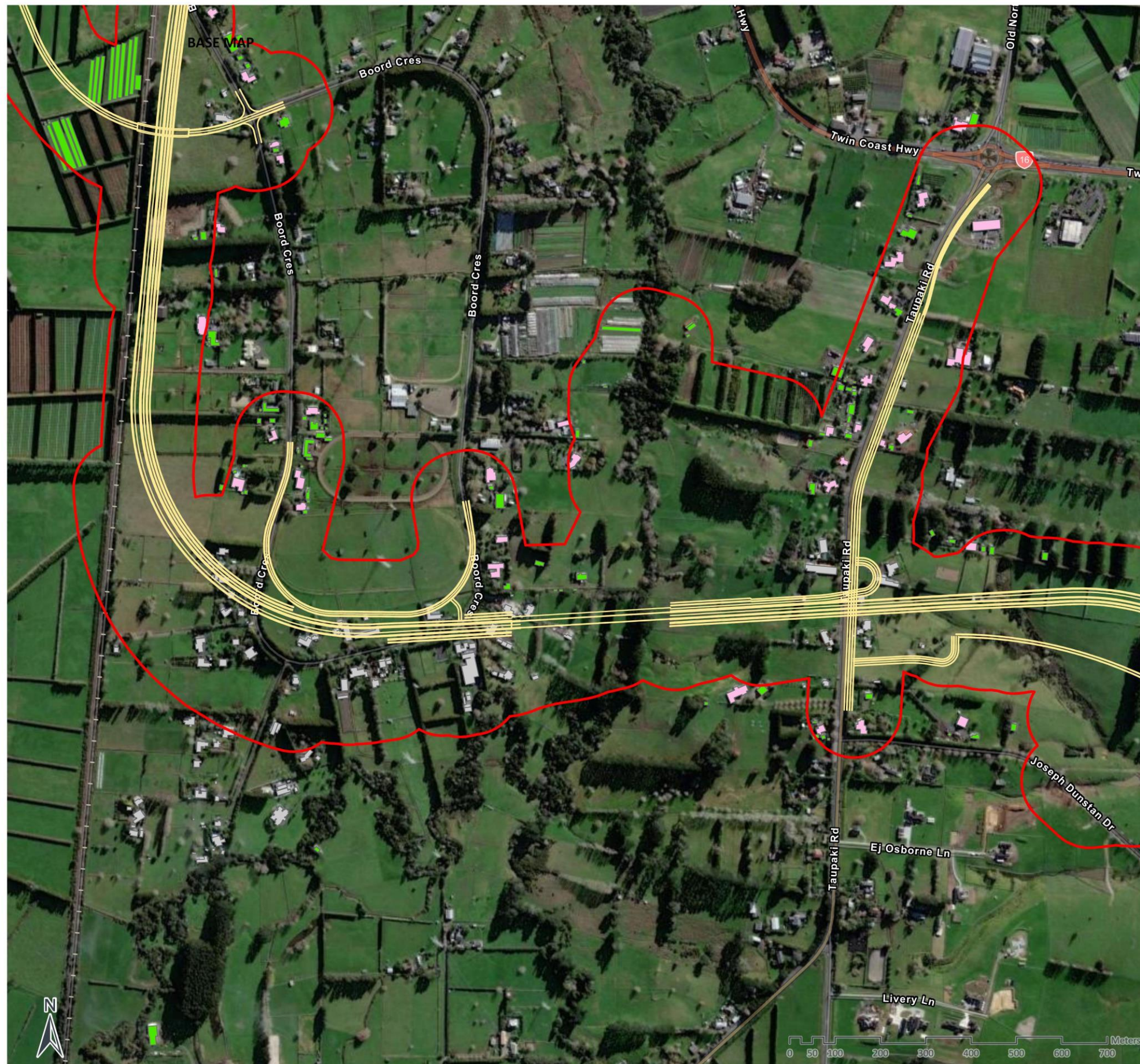


Client: SGA
Authors: owen.li
Date of Issue: 7/10/2022 4:58 pm

Drawing Details:
 Scale: 1:8,000
 Projection: WGS 1984 Web Mercator Auxiliary Sphere
 Map Rotation: 0°

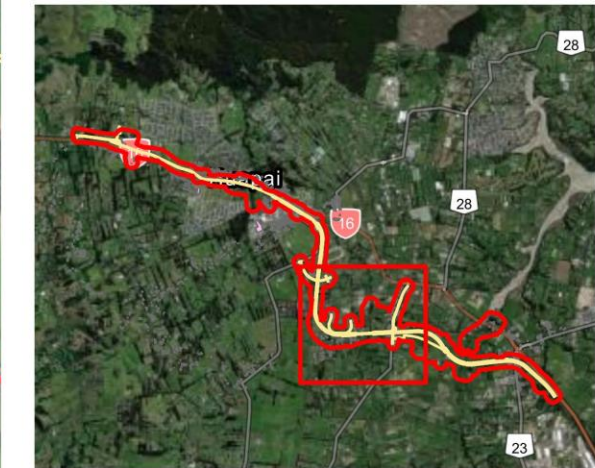
SoundPLAN Details:
 Calculation Method: CoRTN 1988
 Result File Name: RRKL3010.res

Map Notes / Comments:
 This map is for graphical purposes only. While every effort has been made to ensure that the data are accurate and reliable, Marshall Day Acoustics cannot assume liability for errors or omissions in the data graphically represented. The noise contours were obtained by interpolations of calculated grid points (spacing typically 5-25m), with varying interpolation accuracy. Precise noise levels at specific locations, can be made available at request if not included in the projects point receiver calculations.



SUPPORTING GROWTH PROGRAMME NORTH WEST NOR S3 RTC CONSTRUCTION NOISE ENVELOPES

- Noise Envelopes
- Nor3 RTC
- Buildings**
- Non PPF
- PPF
- Building to be removed



Client: SGA
Authors: owen.li
Date of Issue: 7/10/2022 4:58 pm

Drawing Details:
 Scale: 1:8,000
 Projection: WGS 1984 Web Mercator Auxiliary Sphere
 Map Rotation: 0°

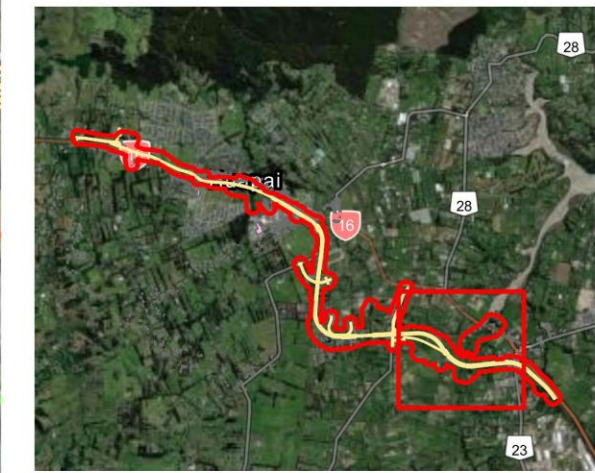
SoundPLAN Details:
 Calculation Method: CoRTN 1988
 Result File Name: RRL3010.res

Map Notes / Comments:
 This map is for graphical purposes only. While every effort has been made to ensure that the data are accurate and reliable, Marshall Day Acoustics cannot assume liability for errors or omissions in the data graphically represented.
 The noise contours were obtained by interpolations of calculated grid points (spacing typically 5-25m), with varying interpolation accuracy. Precise noise levels at specific locations, can be made available at request if not included in the projects point receiver calculations.



**SUPPORTING GROWTH PROGRAMME
NORTH WEST NOR S3 RTC
CONSTRUCTION NOISE ENVELOPES**

- Noise Envelopes
- Nor3 RTC
- Buildings**
- Non PPF
- PPF
- Building to be removed



Client: SGA
Authors: owen.li
Date of Issue: 7/10/2022 4:58 pm

Drawing Details:
 Scale: 1:8,000
 Projection: WGS 1984 Web Mercator Auxiliary Sphere
 Map Rotation: 0°

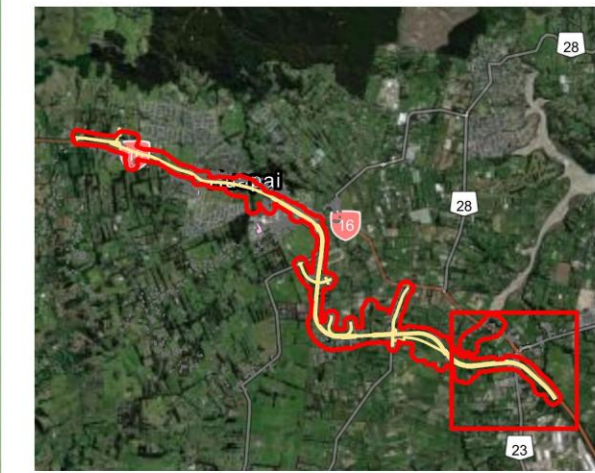
SoundPLAN Details:
 Calculation Method: CoRTN 1988
 Result File Name: RRKL3010.res

Map Notes / Comments:
 This map is for graphical purposes only. While every effort has been made to ensure that the data are accurate and reliable, Marshall Day Acoustics cannot assume liability for errors or omissions in the data graphically represented.
 The noise contours were obtained by interpolations of calculated grid points (spacing typically 5-25m), with varying interpolation accuracy. Precise noise levels at specific locations, can be made available at request if not included in the projects point receiver calculations.



**SUPPORTING GROWTH PROGRAMME
NORTH WEST NOR S3 RTC
CONSTRUCTION NOISE ENVELOPES**

- Noise Envelopes
- Nor3 RTC
- Buildings**
- Non PPF
- PPF
- Building to be removed



Client: SGA
Authors: owen.li
Date of Issue: 7/10/2022 4:58 pm

Drawing Details:
 Scale: 1:8,000
 Projection: WGS 1984 Web Mercator Auxiliary Sphere
 Map Rotation: 0°

SoundPLAN Details:
 Calculation Method: CoRTN 1988
 Result File Name: RRKL3010.res

Map Notes / Comments:
 This map is for graphical purposes only. While every effort has been made to ensure that the data are accurate and reliable, Marshall Day Acoustics cannot assume liability for errors or omissions in the data graphically represented.
 The noise contours were obtained by interpolations of calculated grid points (spacing typically 5-25m), with varying interpolation accuracy. Precise noise levels at specific locations, can be made available at request if not included in the projects point receiver calculations.

1.4 NoR S4



**SUPPORTING GROWTH PROGRAMME
NORTH WEST NOR S4 AR
CONSTRUCTION NOISE ENVELOPES**

- Noise Envelopes
- Nor4 AR
- Buildings**
- Non PPF
- PPF
- Building to be removed



Client: SGA
Authors: owen.li
Date of Issue: 7/10/2022 4:58 pm

Drawing Details:
 Scale: 1:13,000
 Projection: WGS 1984 Web Mercator Auxiliary Sphere
 Map Rotation: 0°

SoundPLAN Details:
 Calculation Method: CoRTN 1988
 Result File Name: RRL3010.res

Map Notes / Comments:
 This map is for graphical purposes only. While every effort has been made to ensure that the data are accurate and reliable, Marshall Day Acoustics cannot assume liability for errors or omissions in the data graphically represented. The noise contours were obtained by interpolations of calculated grid points (spacing typically 5-25m), with varying interpolation accuracy. Precise noise levels at specific locations, can be made available at request if not included in the projects point receiver calculations.



**SUPPORTING GROWTH PROGRAMME
NORTH WEST NOR S4 AR
CONSTRUCTION NOISE ENVELOPES**

- Noise Envelopes
- Nor4 AR
- Buildings**
- Non PPF
- PPF
- Building to be removed



Client: SGA
Authors: owen.li
Date of Issue: 7/10/2022 4:58 pm

Drawing Details:
 Scale: 1:8,000
 Projection: WGS 1984 Web Mercator Auxiliary Sphere
 Map Rotation: 0°

SoundPLAN Details:
 Calculation Method: CoRTN 1988
 Result File Name: RRL3010.res

Map Notes / Comments:
 This map is for graphical purposes only. While every effort has been made to ensure that the data are accurate and reliable, Marshall Day Acoustics cannot assume liability for errors or omissions in the data graphically represented.
 The noise contours were obtained by interpolations of calculated grid points (spacing typically 5-25m), with varying interpolation accuracy. Precise noise levels at specific locations, can be made available at request if not included in the projects point receiver calculations.



**SUPPORTING GROWTH PROGRAMME
NORTH WEST NOR S4 AR
CONSTRUCTION NOISE ENVELOPES**

- Noise Envelopes
- Nor4 AR
- Buildings**
- Non PPF
- PPF
- Building to be removed



Client: SGA
Authors: owen.li
Date of Issue: 7/10/2022 4:58 pm

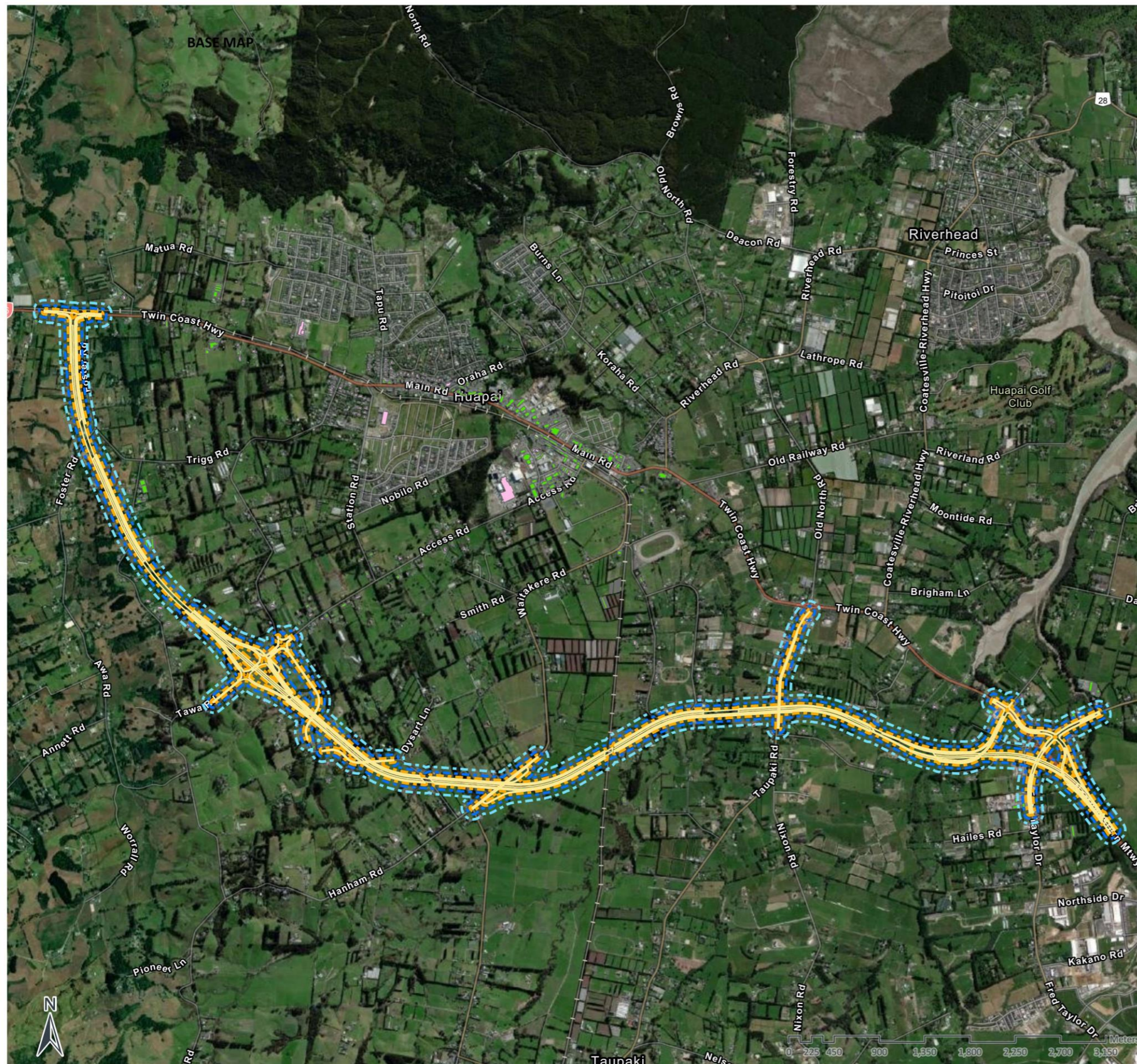
Drawing Details:
 Scale: 1:8,000
 Projection: WGS 1984 Web Mercator Auxiliary Sphere
 Map Rotation: 0°

SoundPLAN Details:
 Calculation Method: CoRTN 1988
 Result File Name: RRL3010.res

Map Notes / Comments:
 This map is for graphical purposes only. While every effort has been made to ensure that the data are accurate and reliable, Marshall Day Acoustics cannot assume liability for errors or omissions in the data graphically represented.
 The noise contours were obtained by interpolations of calculated grid points (spacing typically 5-25m), with varying interpolation accuracy. Precise noise levels at specific locations, can be made available at request if not included in the projects point receiver calculations.

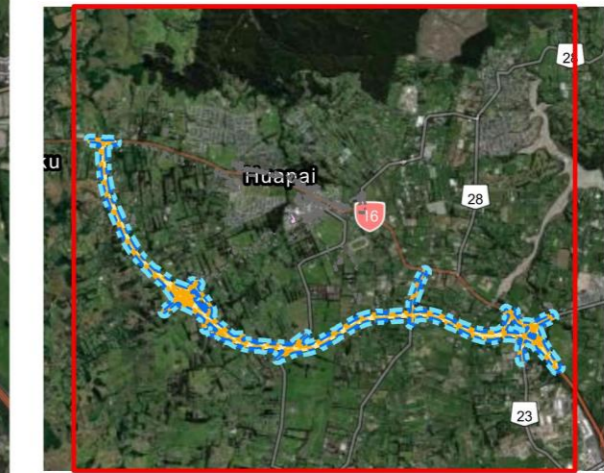
2 Construction Vibration Setbacks

2.1 NoR S1



SUPPORTING GROWTH PROGRAMME NORTH WEST NOR S1 ASH CONSTRUCTION VIBRATION ENVELOPES

- - - NorS1 ASH CatA PPF
 - NorS1 ASH CatA nonPPF
 - - - NorS1 ASH CatB PPF
 - Nor1 ASH
- Buildings**
- Non PPF
 - PPF
 - Building to be removed



Client: SGA
Authors: owen.li
Date of Issue: 10/10/2022 5:15 pm

Drawing Details:
 Scale: 1:36,000
 Projection: WGS 1984 Web Mercator Auxiliary Sphere
 Map Rotation: 0°

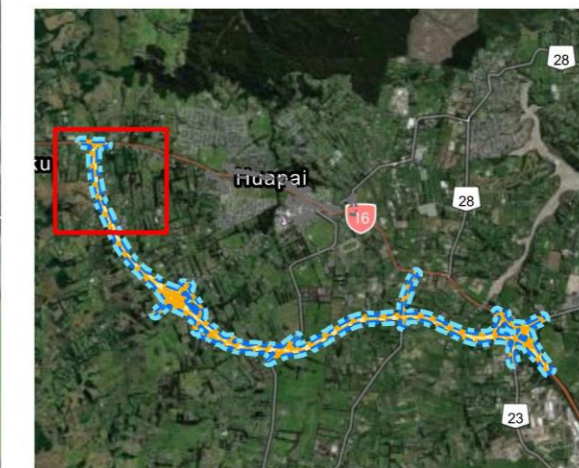
SoundPLAN Details:
 Calculation Method: CoRTN 1988
 Result File Name: RRKL3010.res

Map Notes / Comments:
 This map is for graphical purposes only. While every effort has been made to ensure that the data are accurate and reliable, Marshall Day Acoustics cannot assume liability for errors or omissions in the data graphically represented.
 The noise contours were obtained by interpolations of calculated grid points (spacing typically 5-25m), with varying interpolation accuracy. Precise noise levels at specific locations, can be made available at request if not included in the projects point receiver calculations.



**SUPPORTING GROWTH PROGRAMME
NORTH WEST NOR S1 ASH
CONSTRUCTION VIBRATION ENVELOPES**

- NorS1 ASH CatA PPF
 - NorS1 ASH CatA nonPPF
 - NorS1 ASH CatB PPF
 - NorS1 ASH
- Buildings**
- Non PPF
 - PPF
 - Building to be removed

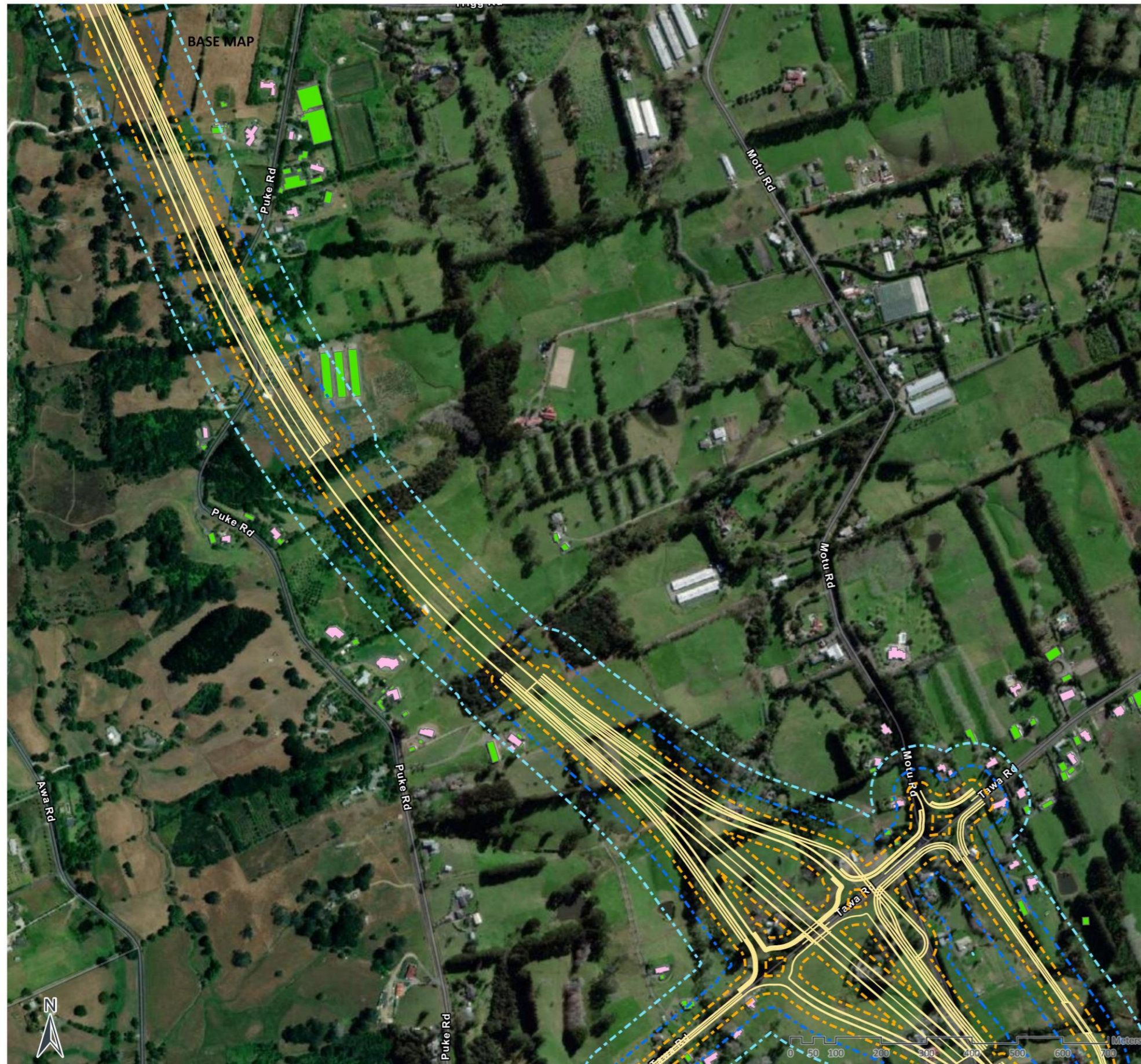


Client: SGA
Authors: owen.li
Date of Issue: 10/10/2022 5:15 pm

Drawing Details:
 Scale: 1:8,000
 Projection: WGS 1984 Web Mercator Auxiliary Sphere
 Map Rotation: 0°

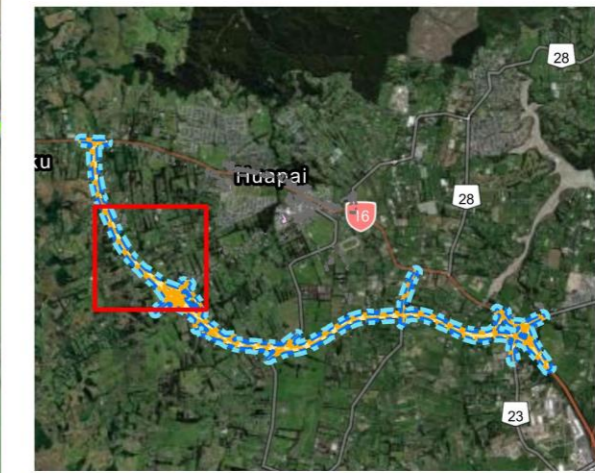
SoundPLAN Details:
 Calculation Method: CoRTN 1988
 Result File Name: RRKL3010.res

Map Notes / Comments:
 This map is for graphical purposes only. While every effort has been made to ensure that the data are accurate and reliable, Marshall Day Acoustics cannot assume liability for errors or omissions in the data graphically represented.
 The noise contours were obtained by interpolations of calculated grid points (spacing typically 5-25m), with varying interpolation accuracy. Precise noise levels at specific locations, can be made available at request if not included in the projects point receiver calculations.



SUPPORTING GROWTH PROGRAMME NORTH WEST NOR S1 ASH CONSTRUCTION VIBRATION ENVELOPES

- - - NorS1 ASH CatA PPF
 - NorS1 ASH CatA nonPPF
 - - - NorS1 ASH CatB PPF
 - Nor1 ASH
- Buildings**
- Non PPF
 - PPF
 - Building to be removed



Client: SGA
Authors: owen.li
Date of Issue: 10/10/2022 5:15 pm

Drawing Details:
 Scale: 1:8,000
 Projection: WGS 1984 Web Mercator Auxiliary Sphere
 Map Rotation: 0°

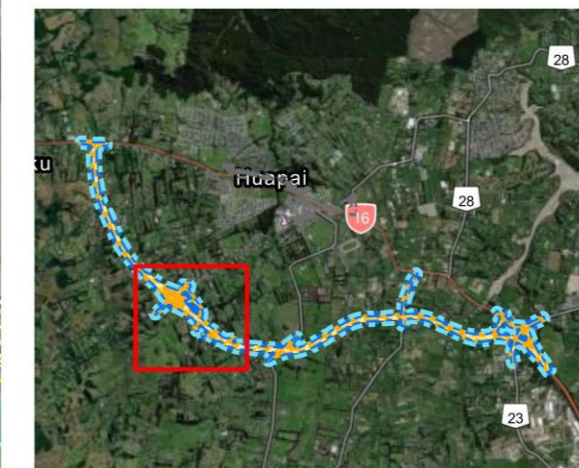
SoundPLAN Details:
 Calculation Method: CoRTN 1988
 Result File Name: RRKL3010.res

Map Notes / Comments:
 This map is for graphical purposes only. While every effort has been made to ensure that the data are accurate and reliable, Marshall Day Acoustics cannot assume liability for errors or omissions in the data graphically represented.
 The noise contours were obtained by interpolations of calculated grid points (spacing typically 5-25m), with varying interpolation accuracy. Precise noise levels at specific locations, can be made available at request if not included in the projects point receiver calculations.



**SUPPORTING GROWTH PROGRAMME
NORTH WEST NOR S1 ASH
CONSTRUCTION VIBRATION ENVELOPES**

- NorS1 ASH CatA PPF
 - NorS1 ASH CatA nonPPF
 - NorS1 ASH CatB PPF
 - NorS1 ASH
- Buildings**
- Non PPF
 - PPF
 - Building to be removed



Client: SGA
Authors: owen.li
Date of Issue: 10/10/2022 5:15 pm

Drawing Details:
 Scale: 1:8,000
 Projection: WGS 1984 Web Mercator Auxiliary Sphere
 Map Rotation: 0°

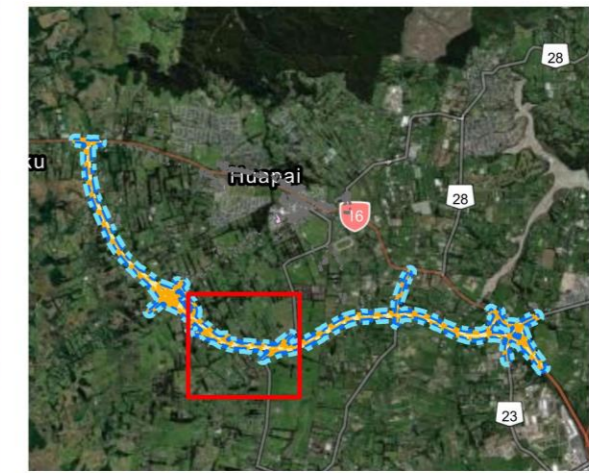
SoundPLAN Details:
 Calculation Method: CoRTN 1988
 Result File Name: RRL3010.res

Map Notes / Comments:
 This map is for graphical purposes only. While every effort has been made to ensure that the data are accurate and reliable, Marshall Day Acoustics cannot assume liability for errors or omissions in the data graphically represented.
 The noise contours were obtained by interpolations of calculated grid points (spacing typically 5-25m), with varying interpolation accuracy. Precise noise levels at specific locations, can be made available at request if not included in the projects point receiver calculations.



**SUPPORTING GROWTH PROGRAMME
NORTH WEST NOR S1 ASH
CONSTRUCTION VIBRATION ENVELOPES**

- NorS1 ASH CatA PPF
 - NorS1 ASH CatA nonPPF
 - NorS1 ASH CatB PPF
 - Nor1 ASH
- Buildings**
- Non PPF
 - PPF
 - Building to be removed



Client: SGA
Authors: owen.li
Date of Issue: 10/10/2022 5:15 pm

Drawing Details:
 Scale: 1:8,000
 Projection: WGS 1984 Web Mercator Auxiliary Sphere
 Map Rotation: 0°

SoundPLAN Details:
 Calculation Method: CoRTN 1988
 Result File Name: RRKL3010.res

Map Notes / Comments:
 This map is for graphical purposes only. While every effort has been made to ensure that the data are accurate and reliable, Marshall Day Acoustics cannot assume liability for errors or omissions in the data graphically represented.
 The noise contours were obtained by interpolations of calculated grid points (spacing typically 5-25m), with varying interpolation accuracy. Precise noise levels at specific locations, can be made available at request if not included in the projects point receiver calculations.