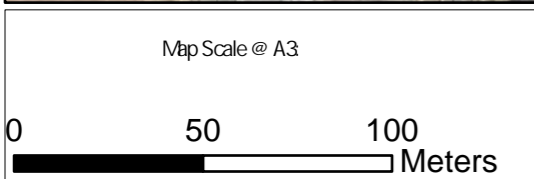
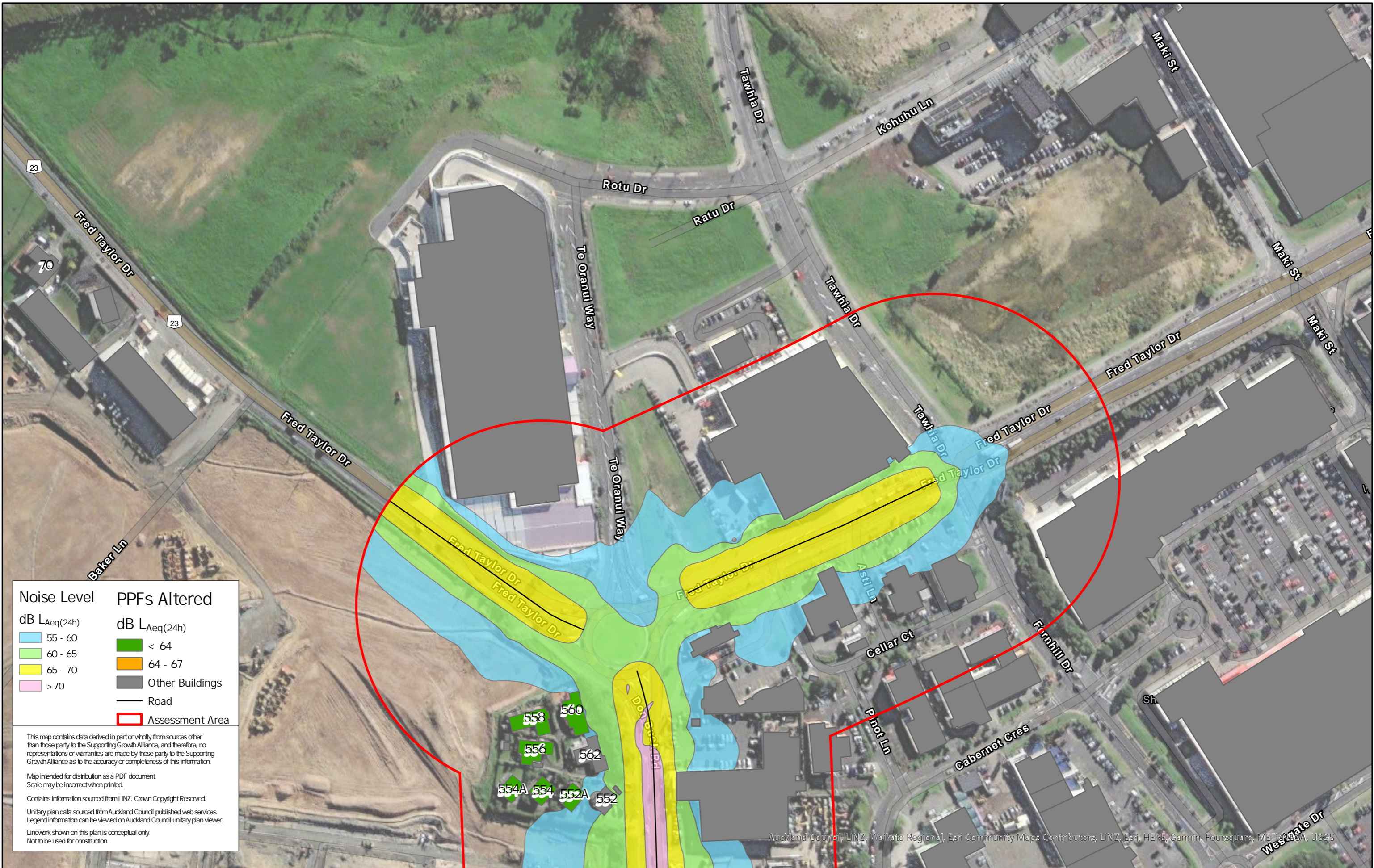


3 Appendix 3: Noise Contour Maps



Revision	Author	Verified	Approved	Date
1	DA	SJ	CD	22/11/22

Title:
 Supporting Growth
 NoR R1 - Existing Road Traffic Noise

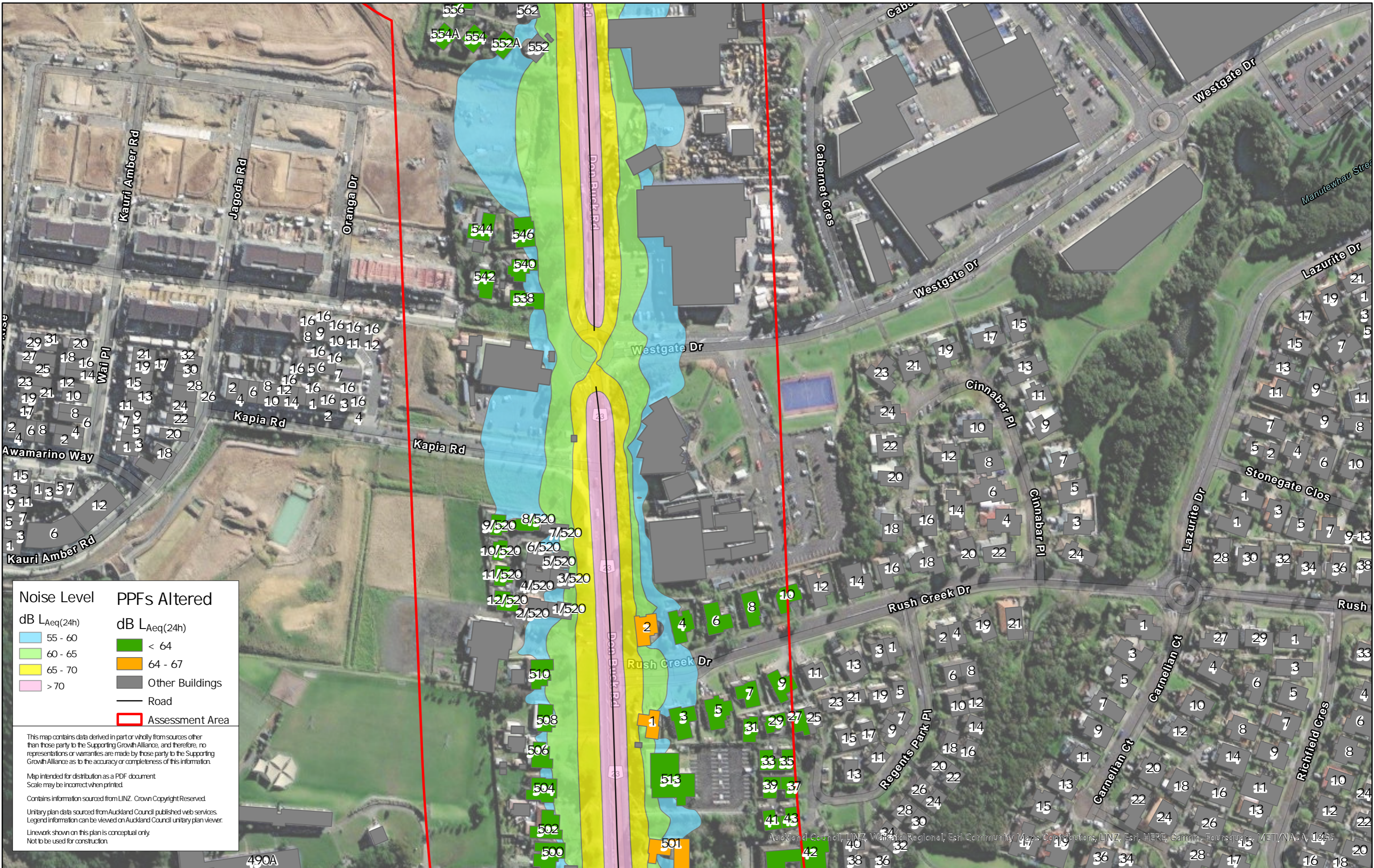
Client:
 Supporting Growth

Project:
 North West Package



Discipline:
 GIS

Drawing No:



Noise Level	PPFs Altered
55 - 60	< 64
60 - 65	64 - 67
65 - 70	Other Buildings
> 70	Road
	Assessment Area

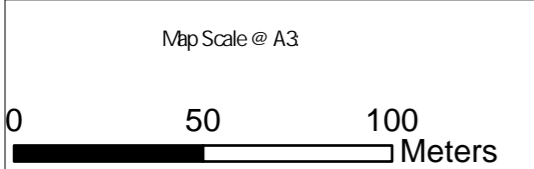
This map contains data derived in part or wholly from sources other than those party to the Supporting Growth Alliance, and therefore, no representations or warranties are made by those party to the Supporting Growth Alliance as to the accuracy or completeness of this information.

Map intended for distribution as a PDF document
Scale may be incorrect when printed.

Contains information sourced from LINZ. Crown Copyright Reserved.

Unitary plan data sourced from Auckland Council published web services. Legend information can be viewed on Auckland Council unitary plan viewer.

Linework shown on this plan is conceptual only.
Not to be used for construction.



Revision	Author	Verified	Approved	Date
1	DA	SJ	CD	22/11/22

Supporting Growth
NoR R1 - Existing Road Traffic Noise

Client: Supporting Growth
 Project: North West Package



Discipline: GIS
 Drawing No:



Noise Level	PPFs Altered
55 - 60	< 64
60 - 65	64 - 67
65 - 70	Other Buildings
> 70	Road
	Assessment Area

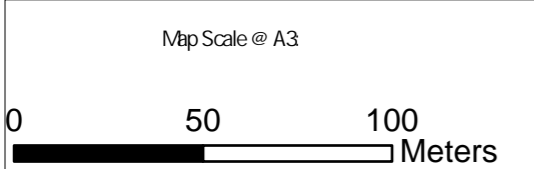
This map contains data derived in part or wholly from sources other than those party to the Supporting Growth Alliance, and therefore, no representations or warranties are made by those party to the Supporting Growth Alliance as to the accuracy or completeness of this information.

Map intended for distribution as a PDF document
Scale may be incorrect when printed.

Contains information sourced from LINZ. Crown Copyright Reserved.

Unitary plan data sourced from Auckland Council published web services. Legend information can be viewed on Auckland Council unitary plan viewer.

Linework shown on this plan is conceptual only.
Not to be used for construction.



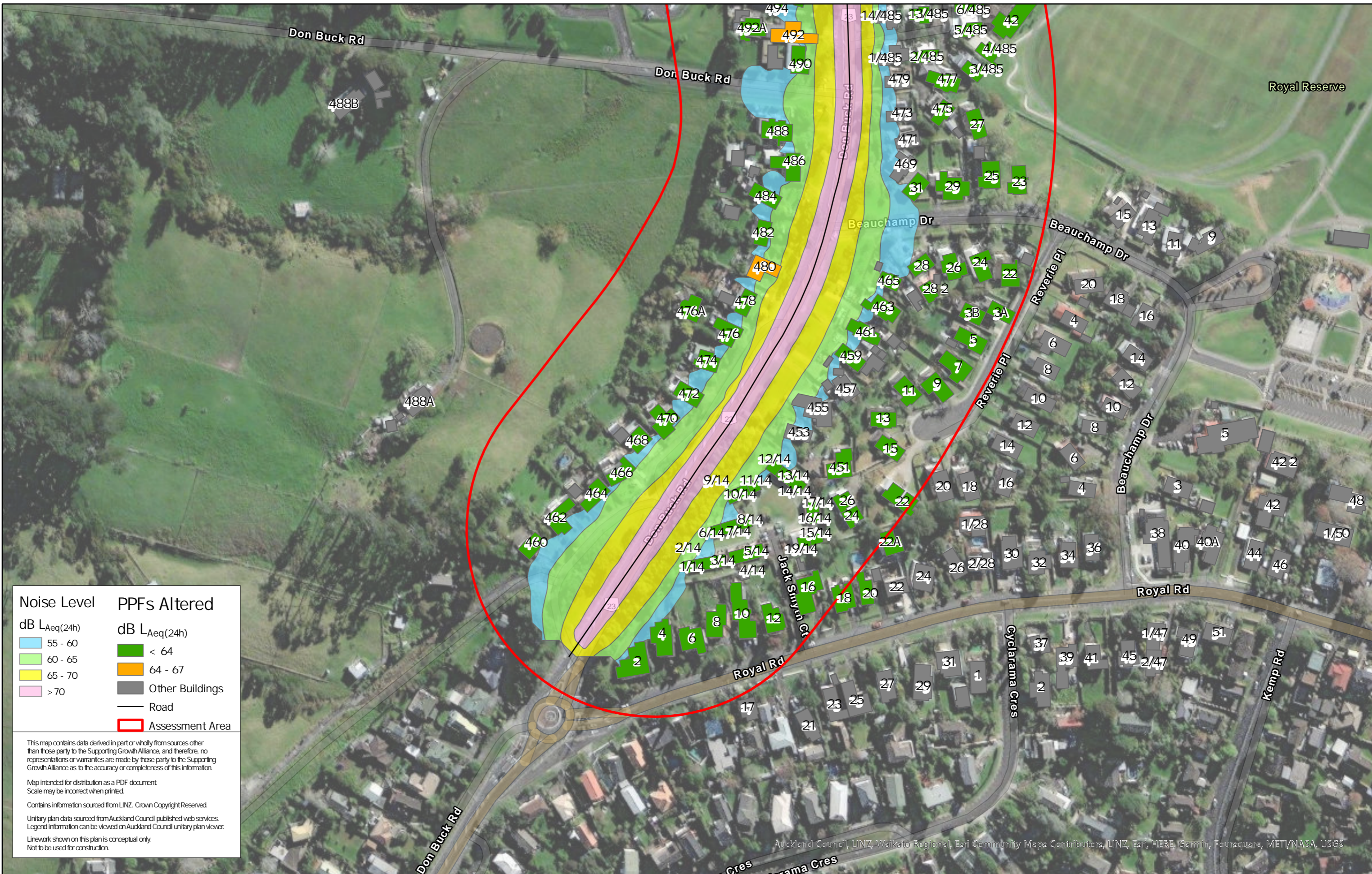
Revision	Author	Verified	Approved	Date	Title
1	DA	SJ	CD	22/11/22	

Supporting Growth
NoR R1 - Existing Road Traffic Noise

Client: Supporting Growth
Project: North West Package



Discipline: GIS
Drawing No:



Noise Level	PPFs Altered
dB $L_{Aeq}(24h)$	dB $L_{Aeq}(24h)$
55 - 60	< 64
60 - 65	64 - 67
65 - 70	Other Buildings
> 70	Road
	Assessment Area

This map contains data derived in part or wholly from sources other than those party to the Supporting Growth Alliance, and therefore, no representations or warranties are made by those party to the Supporting Growth Alliance as to the accuracy or completeness of this information.

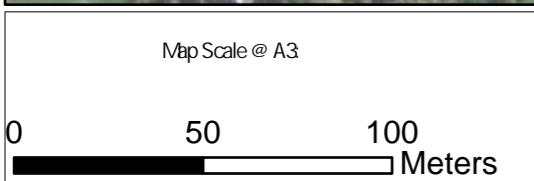
Map intended for distribution as a PDF document
Scale may be incorrect when printed.

Contains information sourced from LINZ. Crown Copyright Reserved.

Unitary plan data sourced from Auckland Council published web services. Legend information can be viewed on Auckland Council unitary plan viewer.

Linework shown on this plan is conceptual only.
Not to be used for construction.

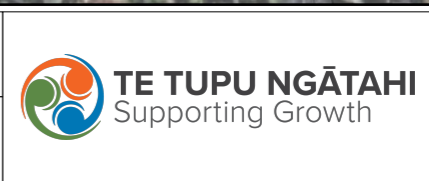
Auckland Council, LINZ, Waikato Regional, Esri Community Maps Contributors, LINZ, Esri, HERE, Garmin, Foursquare, METI/NASA, USGS



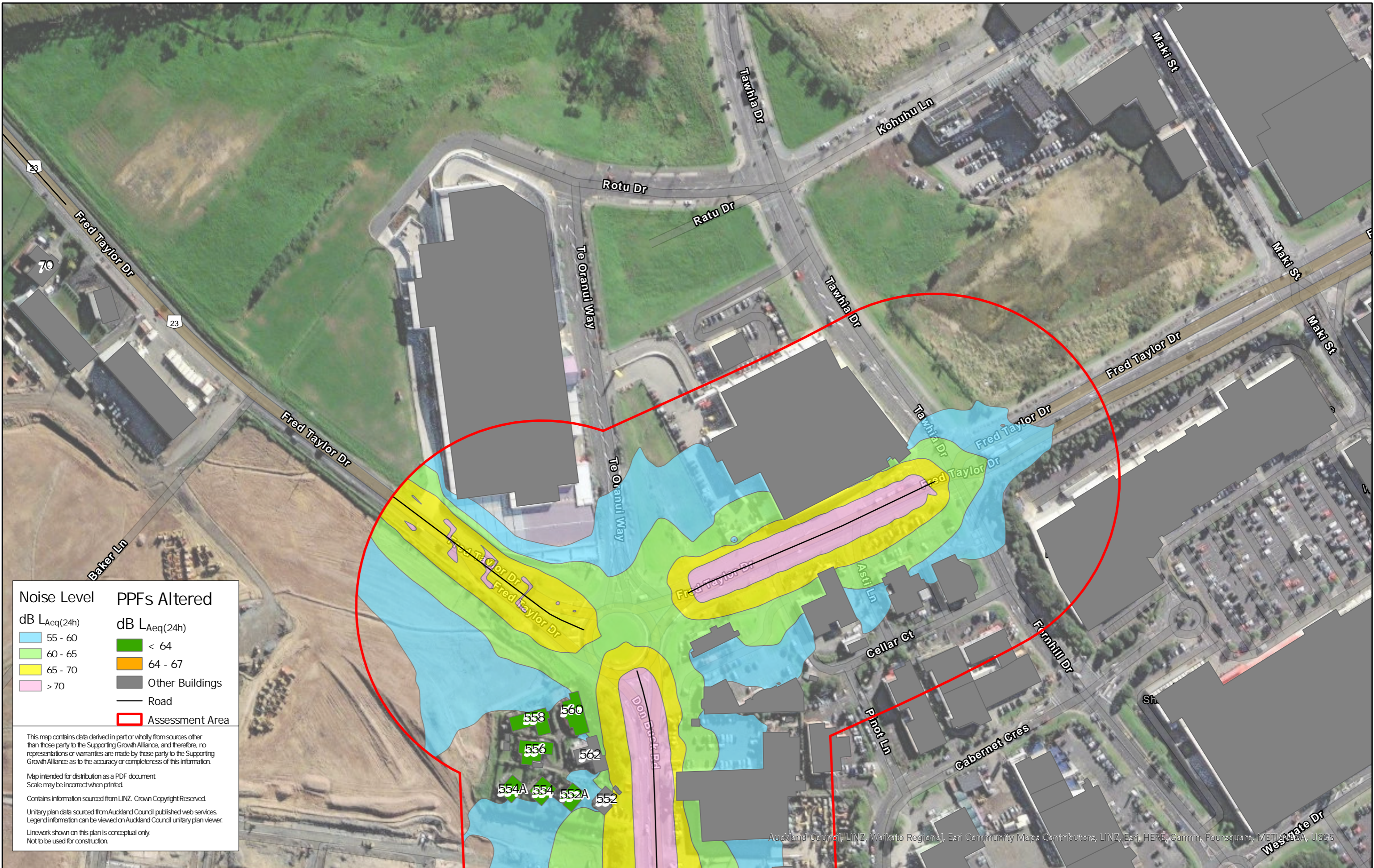
Revision	Author	Verified	Approved	Date
1	DA	SJ	CD	22/11/22

Title: Supporting Growth
NoR R1 - Existing Road Traffic Noise

Client: Supporting Growth
Project: North West Package



Discipline: GIS
Drawing No:



Noise Level	PPFs Altered
dB $L_{Aeq}(24h)$	dB $L_{Aeq}(24h)$
55 - 60	< 64
60 - 65	64 - 67
65 - 70	Other Buildings
> 70	Road
	Assessment Area

This map contains data derived in part or wholly from sources other than those party to the Supporting Growth Alliance, and therefore, no representations or warranties are made by those party to the Supporting Growth Alliance as to the accuracy or completeness of this information.

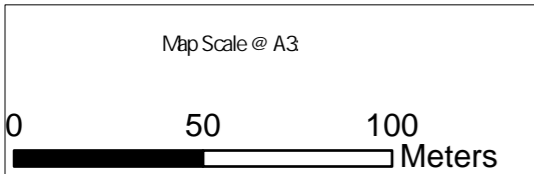
Map intended for distribution as a PDF document
Scale may be incorrect when printed.

Contains information sourced from LINZ. Crown Copyright Reserved.

Unitary plan data sourced from Auckland Council published web services.
Legend information can be viewed on Auckland Council unitary plan viewer.

Linework shown on this plan is conceptual only.
Not to be used for construction.

Auckland Council, LINZ, Waikato Regional, Esri Community Maps Contributors, LINZ, Esri, HERE, Garmin, Foursquare, METI/ANSA, USGS



Revision	Author	Verified	Approved	Date
1	DA	SJ	CD	22/11/22

Title: Supporting Growth
NoR R1 - Do Nothing Road Traffic Noise

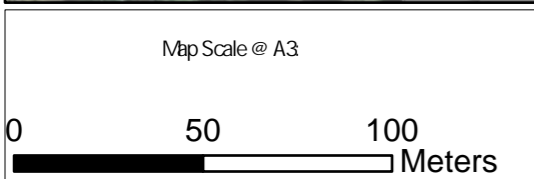
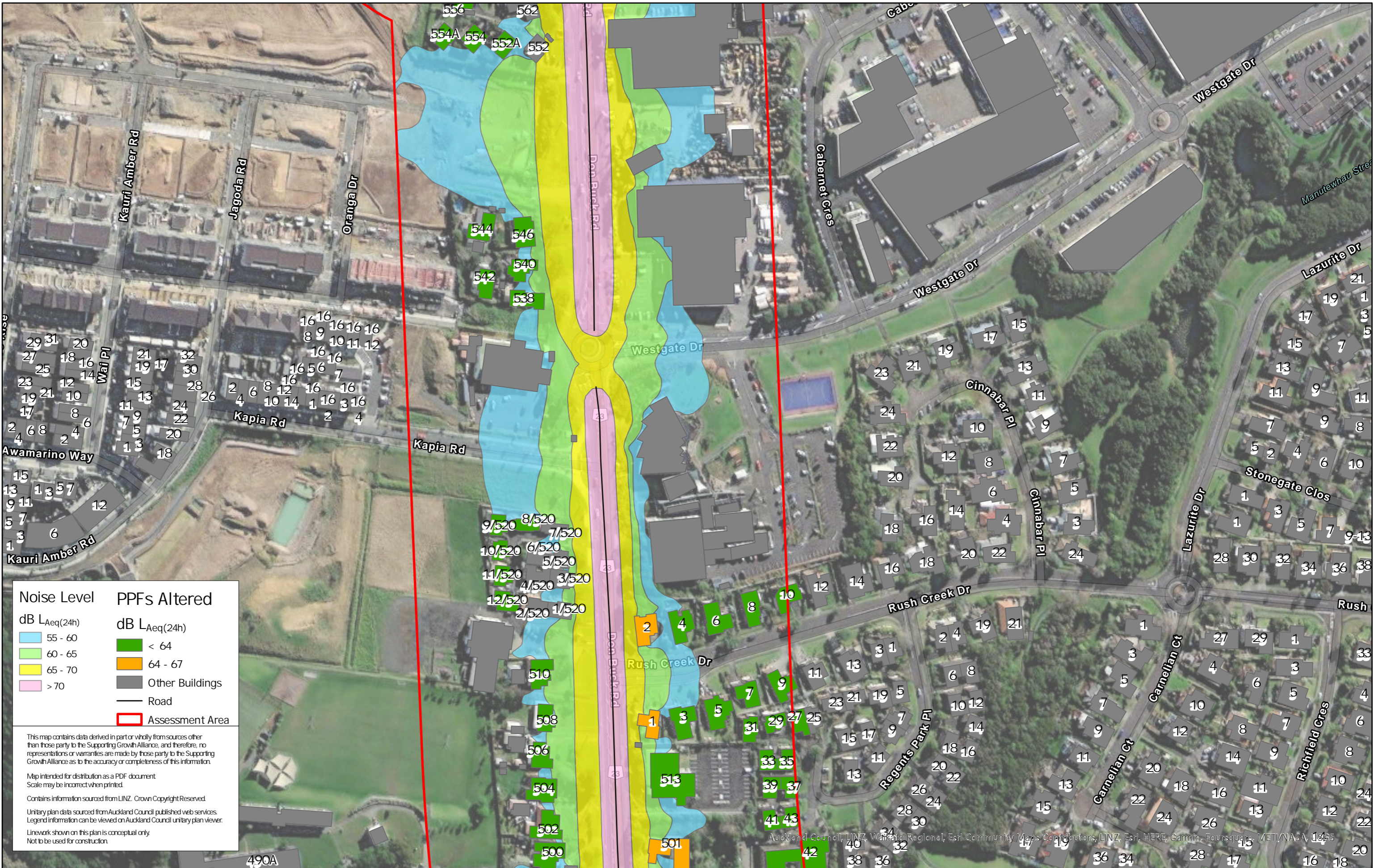
Client: Supporting Growth

Project: North West Package



Discipline: GIS

Drawing No:



Revision	Author	Verified	Approved	Date	Title
1	DA	SJ	CD	22/11/22	Supporting Growth NoR R1 - Do Nothing Road Traffic Noise

Client: Supporting Growth

Project: North West Package

Discipline: GIS

Drawing No:



Auckland Council, LINZ, Waikato Regional, Esri, Community Maps Contributors, LINZ, Esri, HERE, Garmin, Foursquare, METI/NASA, IGN



Noise Level	PPFs Altered
55 - 60	< 64
60 - 65	64 - 67
65 - 70	Other Buildings
> 70	Road
	Assessment Area

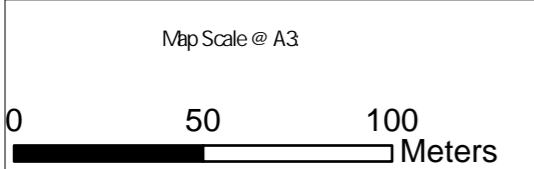
This map contains data derived in part or wholly from sources other than those party to the Supporting Growth Alliance, and therefore, no representations or warranties are made by those party to the Supporting Growth Alliance as to the accuracy or completeness of this information.

Map intended for distribution as a PDF document
Scale may be incorrect when printed.

Contains information sourced from LINZ. Crown Copyright Reserved.

Unitary plan data sourced from Auckland Council published web services. Legend information can be viewed on Auckland Council unitary plan viewer.

Linework shown on this plan is conceptual only.
Not to be used for construction.



Revision	Author	Verified	Approved	Date	Title
1	DA	SJ	CD	22/11/22	

Supporting Growth
NoR R1 - Do Nothing Road Traffic Noise

Client: Supporting Growth
Project: North West Package



Discipline: GIS
Drawing No:



Noise Level	PPFs Altered
dB LAeq(24h)	dB LAeq(24h)
55 - 60	< 64
60 - 65	64 - 67
65 - 70	Other Buildings
> 70	Road
	Assessment Area

This map contains data derived in part or wholly from sources other than those party to the Supporting Growth Alliance, and therefore, no representations or warranties are made by those party to the Supporting Growth Alliance as to the accuracy or completeness of this information.

Map intended for distribution as a PDF document
Scale may be incorrect when printed.

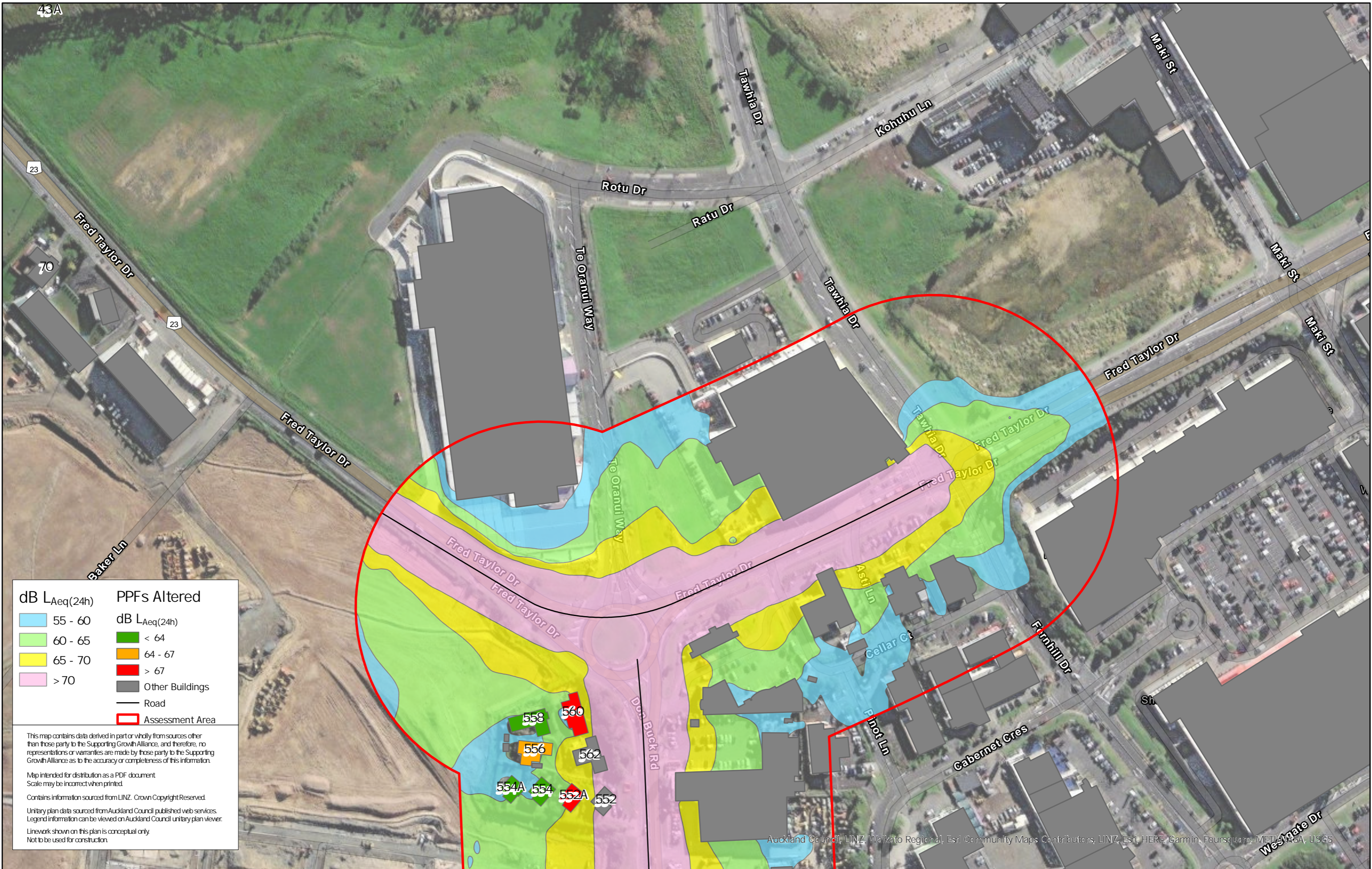
Contains information sourced from LINZ. Crown Copyright Reserved.

Unitary plan data sourced from Auckland Council published web services. Legend information can be viewed on Auckland Council unitary plan viewer.

Linework shown on this plan is conceptual only.
Not to be used for construction.

Auckland Council, LINZ, Waikato Regional, Esri Community Maps Contributors, LINZ, Esri, HERE, Garmin, Foursquare, METI/NASA, USGS

Map Scale @ A3 0 50 100 Meters	Revision	Author	Verified	Approved	Date	Title: Supporting Growth NoR R1 - Do Nothing Road Traffic Noise	Client	Supporting Growth		Discipline:	GIS
	1	DA	SJ	CD	22/11/22		Project	North West Package		Drawing No:	



dB LAeq(24h)		PPFs Altered	
55 - 60	55 - 60	< 64	< 64
60 - 65	60 - 65	64 - 67	64 - 67
65 - 70	65 - 70	> 67	> 67
> 70	> 70	Other Buildings	Other Buildings
		Road	Road
		Assessment Area	Assessment Area

This map contains data derived in part or wholly from sources other than those party to the Supporting Growth Alliance, and therefore, no representations or warranties are made by those party to the Supporting Growth Alliance as to the accuracy or completeness of this information.

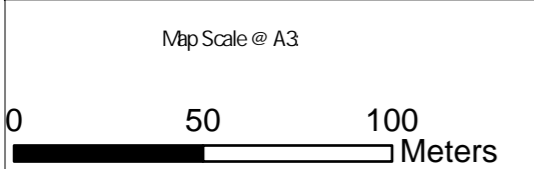
Map intended for distribution as a PDF document
Scale may be incorrect when printed.

Contains information sourced from LINZ. Crown Copyright Reserved.

Unitary plan data sourced from Auckland Council published web services.
Legend information can be viewed on Auckland Council unitary plan viewer.

Linework shown on this plan is conceptual only.
Not to be used for construction.

Auckland Council, LINZ, Waikato Regional, Esri Community Maps Contributors, LINZ, Esri, HERE, Garmin, Foursquare, METI, NASA, USGS



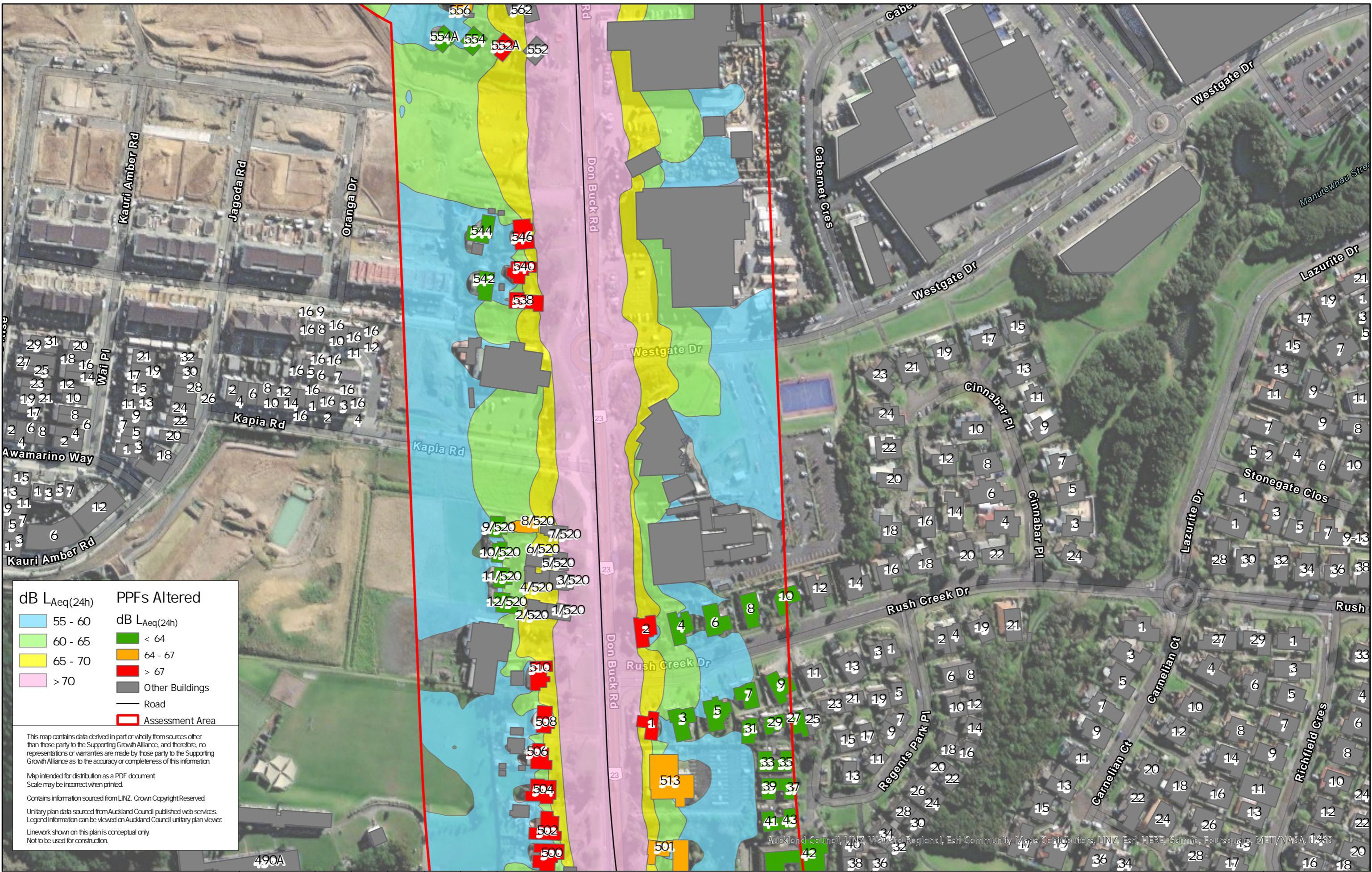
Revision	Author	Verified	Approved	Date	Title
1	DA	SJ	CD	22/11/22	

Supporting Growth
NoR R1 - Do Minimum Road Traffic Noise

Client: Supporting Growth
 Project: North West Package



Discipline: GIS
 Drawing No:



dB LAeq(24h)

- 55 - 60
- 60 - 65
- 65 - 70
- > 70

PPFs Altered

- < 64
- 64 - 67
- > 67
- Other Buildings
- Road
- Assessment Area

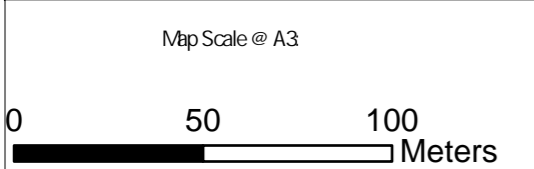
This map contains data derived in part or wholly from sources other than those party to the Supporting Growth Alliance, and therefore, no representations or warranties are made by those party to the Supporting Growth Alliance as to the accuracy or completeness of this information.

Map intended for distribution as a PDF document
Scale may be incorrect when printed.

Contains information sourced from LINZ. Crown Copyright Reserved.

Unitary plan data sourced from Auckland Council published web services.
Legend information can be viewed on Auckland Council unitary plan viewer.

Linework shown on this plan is conceptual only.
Not to be used for construction.



Revision	Author	Verified	Approved	Date	Title
1	DA	SJ	CD	22/11/22	

Supporting Growth
NoR R1 - Do Minimum Road Traffic Noise

Client: Supporting Growth

Project: North West Package



Discipline: GIS

Drawing No:



dB LAeq(24h)		PPFs Altered	
55 - 60	< 64	Other Buildings	Road
60 - 65	64 - 67	Assessment Area	
65 - 70	> 67		
> 70			

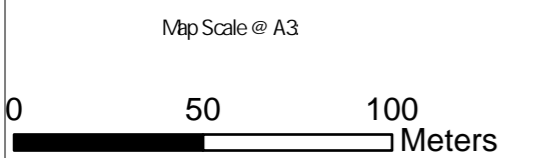
This map contains data derived in part or wholly from sources other than those party to the Supporting Growth Alliance, and therefore, no representations or warranties are made by those party to the Supporting Growth Alliance as to the accuracy or completeness of this information.

Map intended for distribution as a PDF document
Scale may be incorrect when printed.

Contains information sourced from LINZ. Crown Copyright Reserved.

Unitary plan data sourced from Auckland Council published web services. Legend information can be viewed on Auckland Council unitary plan viewer.

Linework shown on this plan is conceptual only.
Not to be used for construction.



Revision	Author	Verified	Approved	Date	Title
1	DA	SJ	CD	22/11/22	

Supporting Growth
NoR R1 - Do Minimum Road Traffic Noise

Client	Supporting Growth
Project	North West Package



Discipline:	GIS
Drawing No:	



dB LAeq(24h)		PPFs Altered	
[Light Blue]	55 - 60	[Green]	< 64
[Light Green]	60 - 65	[Orange]	64 - 67
[Yellow]	65 - 70	[Red]	> 67
[Pink]	> 70	[Grey]	Other Buildings
		[Black Line]	Road
		[Red Outline]	Assessment Area

This map contains data derived in part or wholly from sources other than those party to the Supporting Growth Alliance, and therefore, no representations or warranties are made by those party to the Supporting Growth Alliance as to the accuracy or completeness of this information.

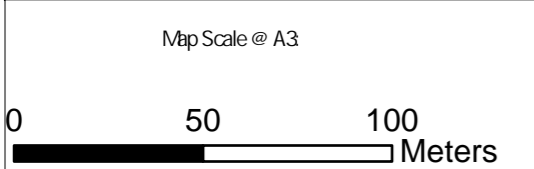
Map intended for distribution as a PDF document.
Scale may be incorrect when printed.

Contains information sourced from LINZ. Crown Copyright Reserved.

Unitary plan data sourced from Auckland Council published web services. Legend information can be viewed on Auckland Council unitary plan viewer.

Linework shown on this plan is conceptual only.
Not to be used for construction.

Auckland Council, LINZ, Waikato Regional, Esri Community Maps Contributors, LINZ, Esri, HERE, Garmin, Pousquare, METI/NASA, USGS



Revision	Author	Verified	Approved	Date
1	DA	SJ	CD	22/11/22

Title: **Supporting Growth**
NoR R1 - Do Minimum Road Traffic Noise

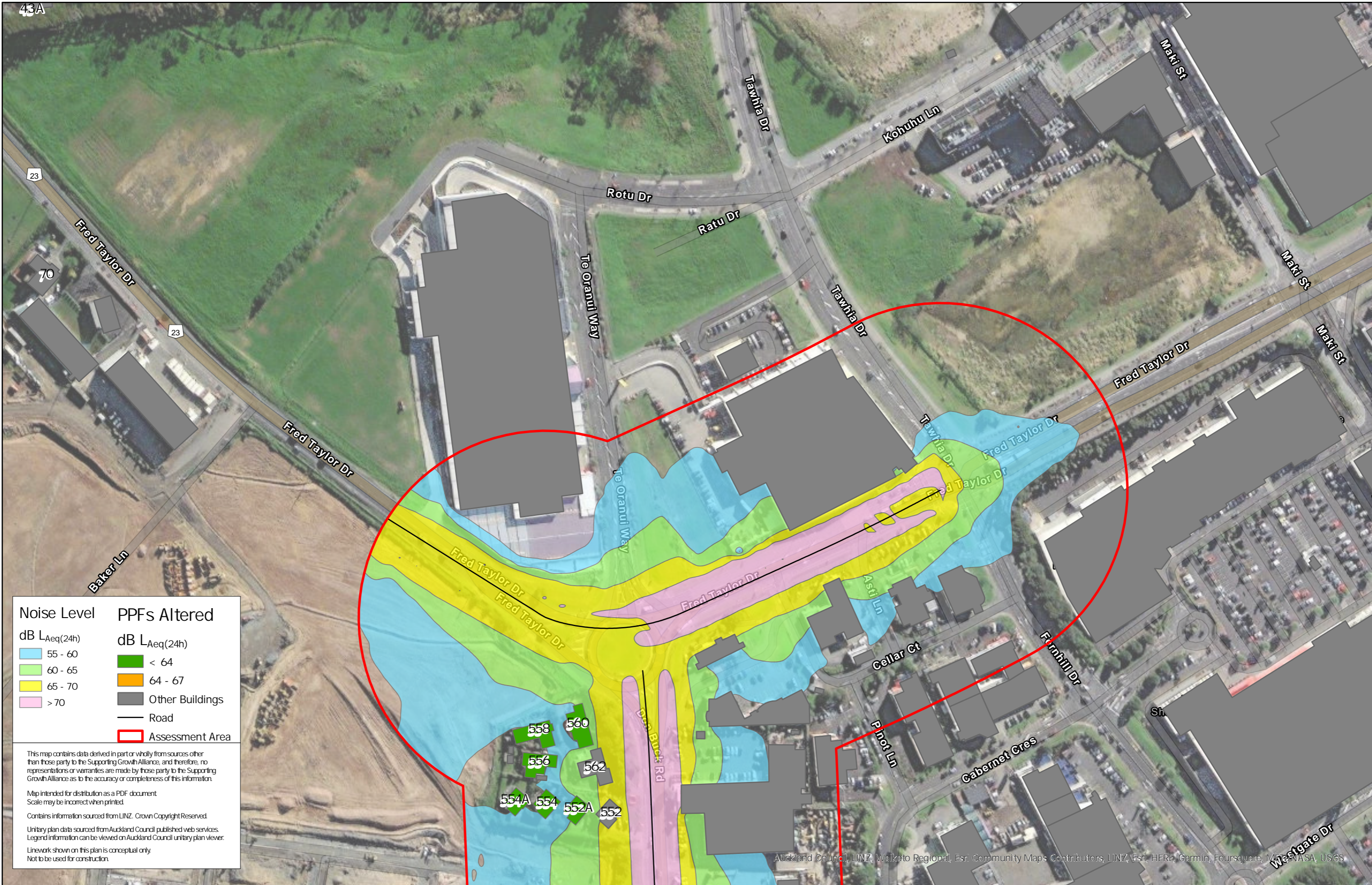
Client: Supporting Growth

Project: North West Package



Discipline: GIS

Drawing No:



Noise Level	PPFs Altered
dB $L_{Aeq}(24h)$	dB $L_{Aeq}(24h)$
55 - 60	< 64
60 - 65	64 - 67
65 - 70	Other Buildings
> 70	Road
	Assessment Area

This map contains data derived in part or wholly from sources other than those party to the Supporting Growth Alliance, and therefore, no representations or warranties are made by those party to the Supporting Growth Alliance as to the accuracy or completeness of this information.

Map intended for distribution as a PDF document
Scale may be incorrect when printed.

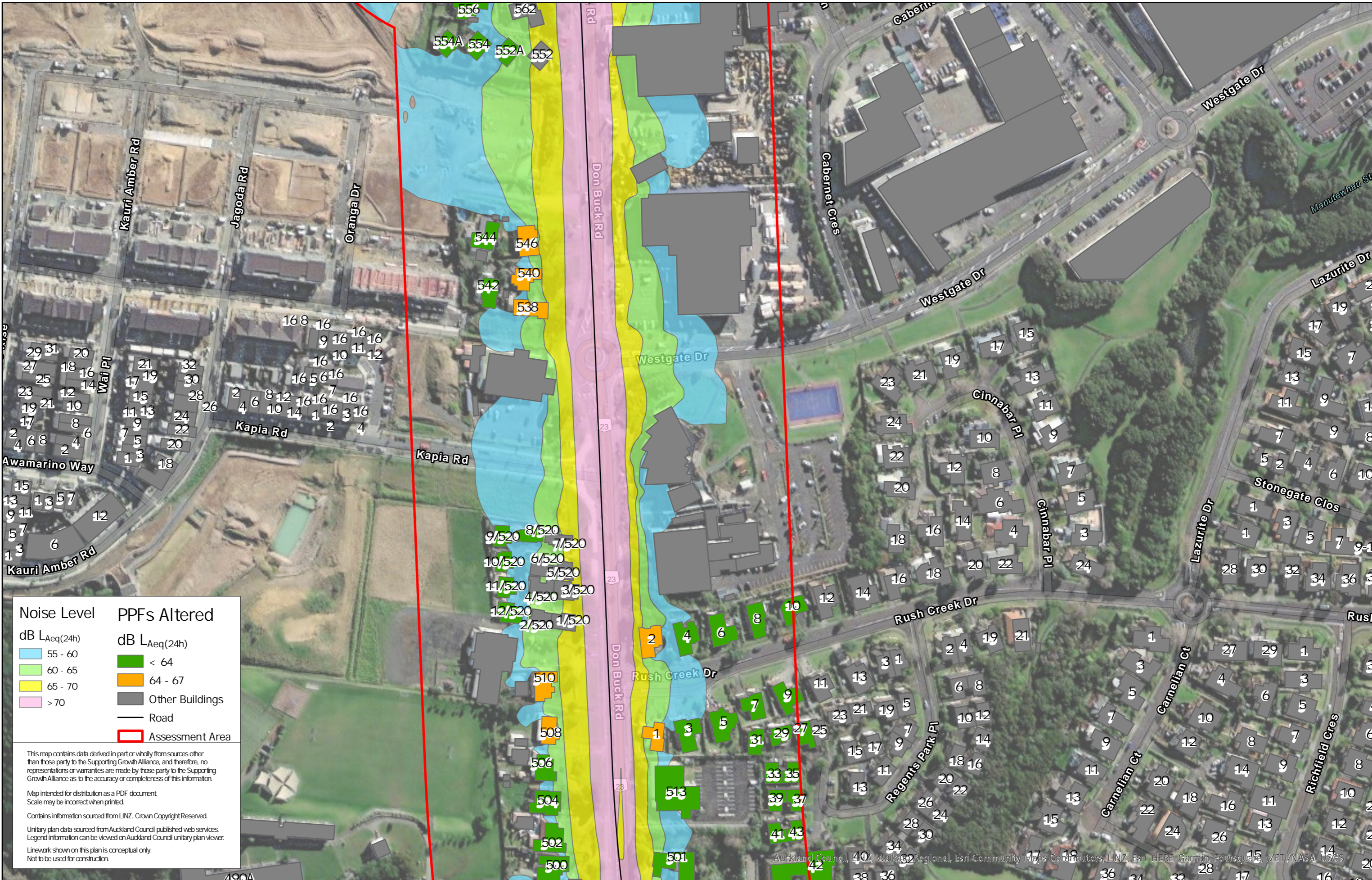
Contains information sourced from LINZ. Crown Copyright Reserved.

Unitary plan data sourced from Auckland Council published web services.
Legend information can be viewed on Auckland Council unitary plan viewer.

Linework shown on this plan is conceptual only.
Not to be used for construction.

Auckland Council, LINZ, Waikato Regional, Esri Community Maps Contributors, LINZ, Esri, HERE, Garmin, Foursquare, Mapbox, Mapbox Data, Mapbox, Microsoft, NASA, USGS

Map Scale @ A3 0 50 100 Meters	Revision	Author	Verified	Approved	Date	Title: Supporting Growth NoR R1 - Mitigation Option 1 Road Traffic Noise	Client	Supporting Growth		Discipline:	GIS
	1	DA	SJ	CD	22/11/22		Project	North West Package		Drawing No:	



Noise Level
dB LAeq(24h)

- 55 - 60
- 60 - 65
- 65 - 70
- > 70

PPFs Altered
dB LAeq(24h)

- < 64
- 64 - 67

Other Buildings
 Road
 Assessment Area

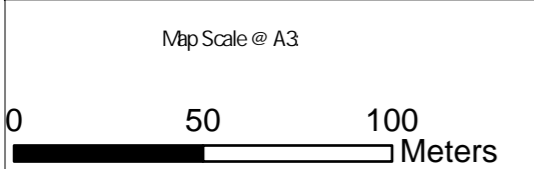
This map contains data derived in part or wholly from sources other than those party to the Supporting Growth Alliance, and therefore, no representations or warranties are made by those party to the Supporting Growth Alliance as to the accuracy or completeness of this information.

Map intended for distribution as a PDF document
Scale may be incorrect when printed.

Contains information sourced from LINZ. Crown Copyright Reserved.

Unitary plan data sourced from Auckland Council published web services. Legend information can be viewed on Auckland Council unitary plan viewer.

Linework shown on this plan is conceptual only.
Not to be used for construction.



Revision	Author	Verified	Approved	Date
1	DA	SJ	CD	22/11/22

Title:
Supporting Growth
NoR R1 - Mitigation Option 1 Road Traffic Noise

Client: Supporting Growth
Project: North West Package



Discipline: GIS
Drawing No:

Auckland Council, LINZ, Waikato Regional, Esri Community Maps Contributors, LINZ, Esri, HERE, Garmin, FourSquare, MET/NASA, USGS



Noise Level
dB LAeq(24h)

- 55 - 60
- 60 - 65
- 65 - 70
- > 70

PPFs Altered
dB LAeq(24h)

- < 64
- 64 - 67
- Other Buildings
- Road
- Assessment Area

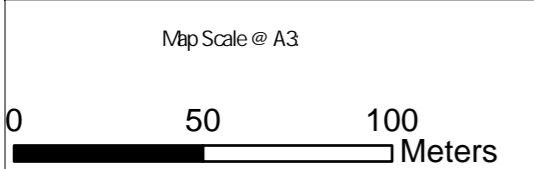
This map contains data derived in part or wholly from sources other than those party to the Supporting Growth Alliance, and therefore, no representations or warranties are made by those party to the Supporting Growth Alliance as to the accuracy or completeness of this information.

Map intended for distribution as a PDF document
Scale may be incorrect when printed.

Contains information sourced from LINZ. Crown Copyright Reserved.

Unitary plan data sourced from Auckland Council published web services. Legend information can be viewed on Auckland Council unitary plan viewer.

Linework shown on this plan is conceptual only.
Not to be used for construction.



Revision	Author	Verified	Approved	Date	Title
1	DA	SJ	CD	22/11/22	

Supporting Growth
NoR R1 - Mitigation Option 1 Road Traffic Noise

Client	Supporting Growth
Project	North West Package

Discipline:	GIS
Drawing No:	

Auckland Council, LINZ, Waikato Regional Council, Esri Community Maps Contributors, LINZ, Esri, HERE, Garmin, Foursquare, METI/NASA, USGS



Noise Level	PPFs Altered
dB $L_{Aeq}(24h)$	dB $L_{Aeq}(24h)$
55 - 60	< 64
60 - 65	64 - 67
65 - 70	Other Buildings
> 70	Road
	Assessment Area

This map contains data derived in part or wholly from sources other than those party to the Supporting Growth Alliance, and therefore, no representations or warranties are made by those party to the Supporting Growth Alliance as to the accuracy or completeness of this information.

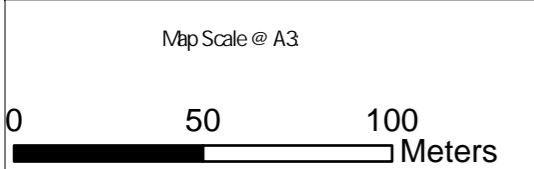
Map intended for distribution as a PDF document
Scale may be incorrect when printed.

Contains information sourced from LINZ. Crown Copyright Reserved.

Unitary plan data sourced from Auckland Council published web services. Legend information can be viewed on Auckland Council unitary plan viewer.

Linework shown on this plan is conceptual only.
Not to be used for construction.

Auckland Council, LINZ, Waikato Regional, Esri, Community Maps Contributors, LINZ, Esri, HERE, Garmin, Foursquare, METI/NASA, USGS



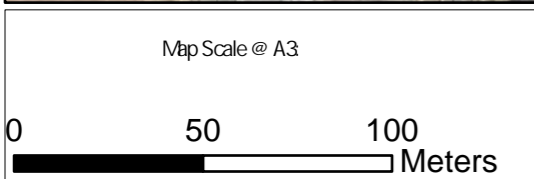
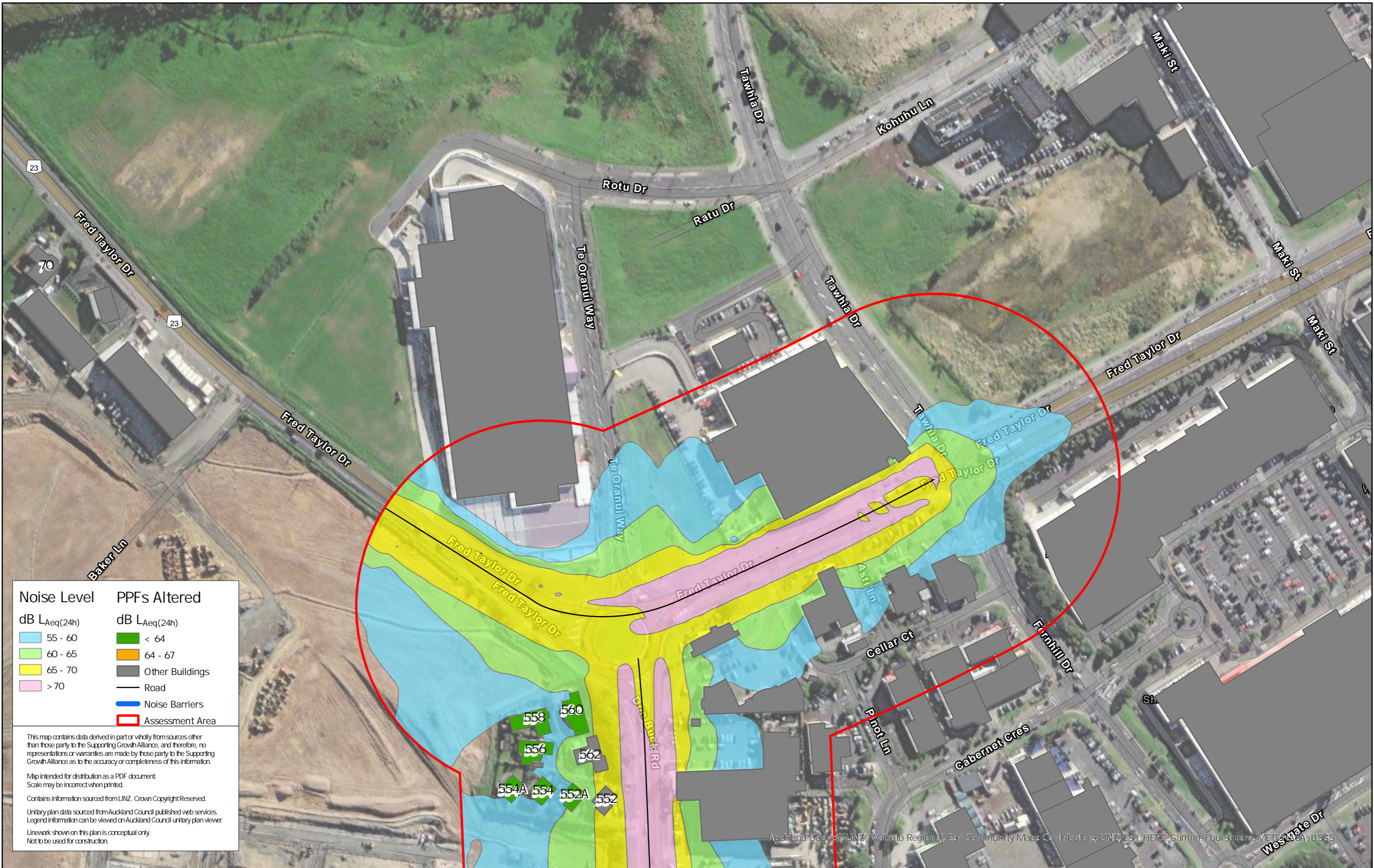
Revision	Author	Verified	Approved	Date
1	DA	SJ	CD	22/11/22

Title: Supporting Growth
NoR R1 - Mitigation Option 1 Road Traffic Noise

Client: Supporting Growth
Project: North West Package



Discipline: GIS
Drawing No:



Revision	Author	Verified	Approved	Date
1	DA	SJ	CD	22/11/22

Title: Supporting Growth
NoR R1 - Mitigation Option 2 Road Traffic Noise

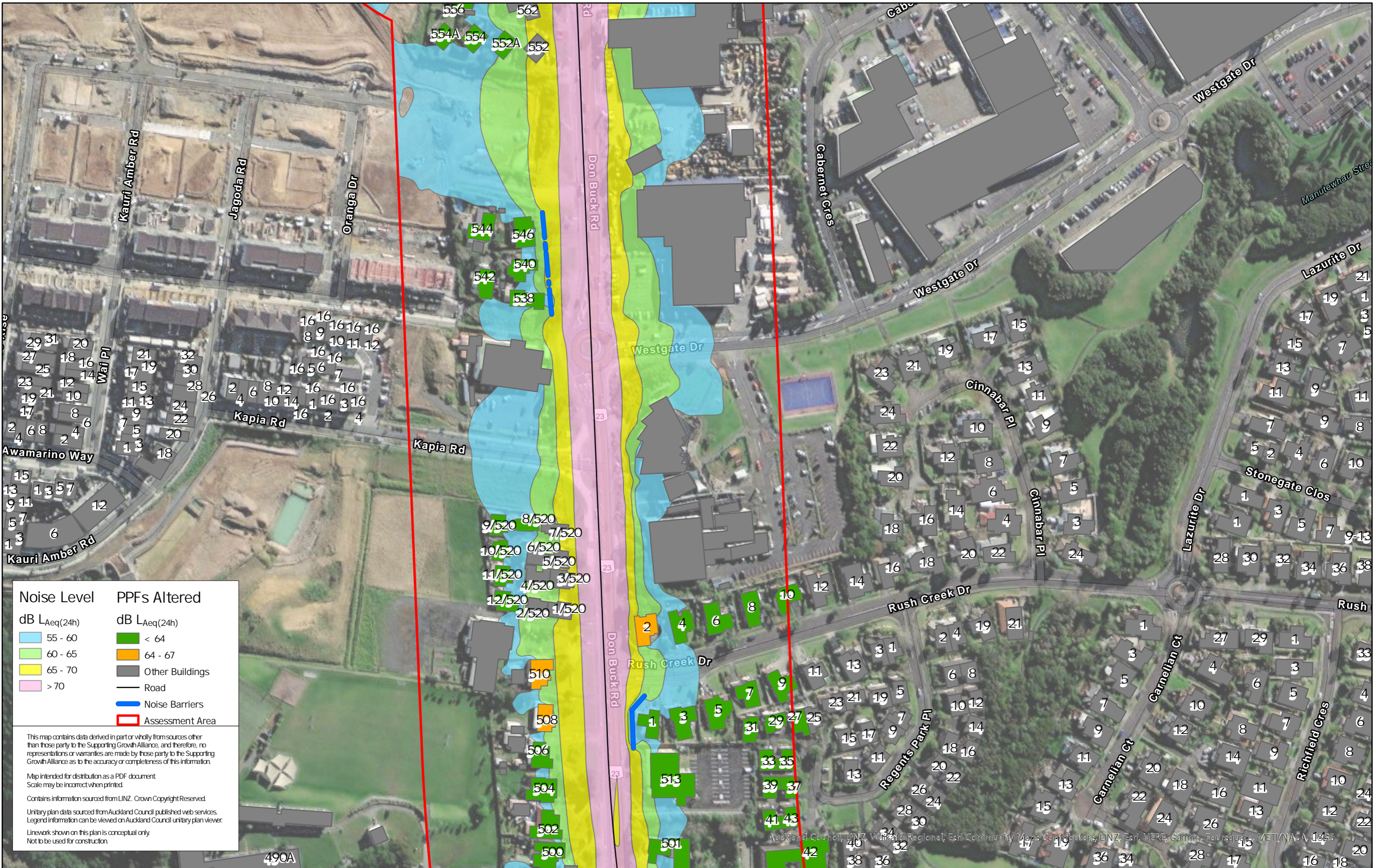
Client: Supporting Growth

Project: North West Package



Discipline: GIS

Drawing No:



Noise Level	PPFs Altered
55 - 60	< 64
60 - 65	64 - 67
65 - 70	Other Buildings
> 70	Road
	Noise Barriers
	Assessment Area

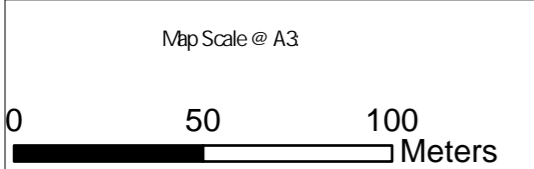
This map contains data derived in part or wholly from sources other than those party to the Supporting Growth Alliance, and therefore, no representations or warranties are made by those party to the Supporting Growth Alliance as to the accuracy or completeness of this information.

Map intended for distribution as a PDF document
Scale may be incorrect when printed.

Contains information sourced from LINZ. Crown Copyright Reserved.

Unitary plan data sourced from Auckland Council published web services. Legend information can be viewed on Auckland Council unitary plan viewer.

Linework shown on this plan is conceptual only.
Not to be used for construction.



Revision	Author	Verified	Approved	Date
1	DA	SJ	CD	22/11/22

Supporting Growth
NoR R1 - Mitigation Option 2 Road Traffic Noise

Client: Supporting Growth
 Project: North West Package



Discipline: GIS
 Drawing No:



Noise Level	PPFs Altered
55 - 60	< 64
60 - 65	64 - 67
65 - 70	Other Buildings
> 70	Road
	Noise Barriers
	Assessment Area

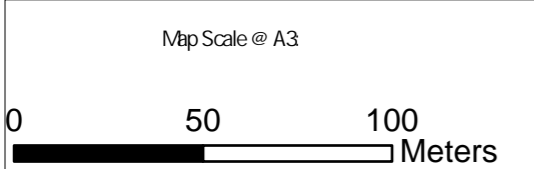
This map contains data derived in part or wholly from sources other than those party to the Supporting Growth Alliance, and therefore, no representations or warranties are made by those party to the Supporting Growth Alliance as to the accuracy or completeness of this information.

Map intended for distribution as a PDF document
Scale may be incorrect when printed.

Contains information sourced from LINZ. Crown Copyright Reserved.

Unitary plan data sourced from Auckland Council published web services. Legend information can be viewed on Auckland Council unitary plan viewer.

Linework shown on this plan is conceptual only.
Not to be used for construction.



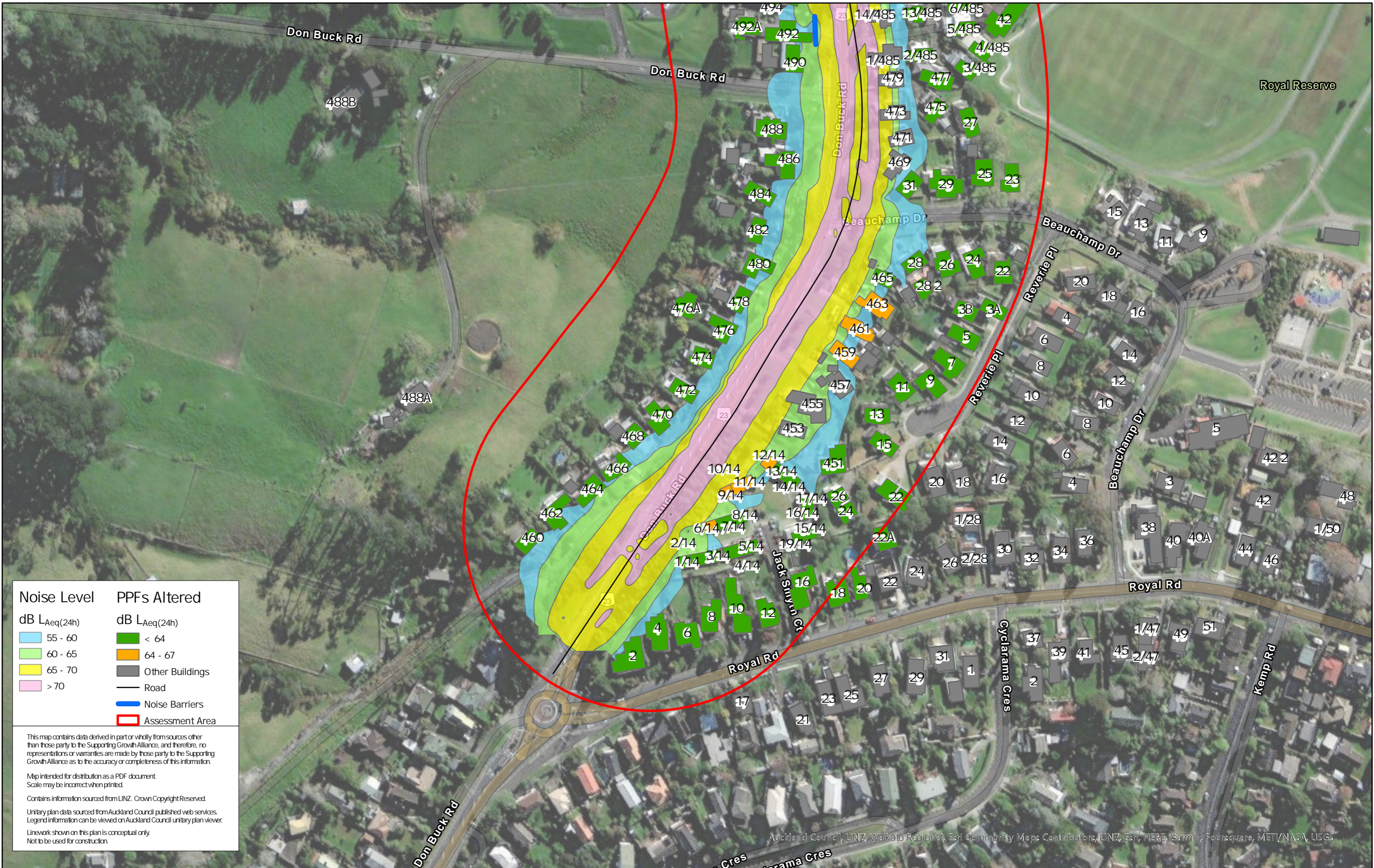
Revision	Author	Verified	Approved	Date	Title
1	DA	SJ	CD	22/11/22	

Supporting Growth
NoR R1 - Mitigation Option 2 Road Traffic Noise

Client	Supporting Growth
Project	North West Package



Discipline:	GIS
Drawing No:	



Noise Level	PPFs Altered
dB L _{Aeq} (24h)	dB L _{Aeq} (24h)
55 - 60	< 64
60 - 65	64 - 67
65 - 70	Other Buildings
> 70	Road
	Noise Barriers
	Assessment Area

This map contains data derived in part or wholly from sources other than those party to the Supporting Growth Alliance, and therefore, no representations or warranties are made by those party to the Supporting Growth Alliance as to the accuracy or completeness of this information.

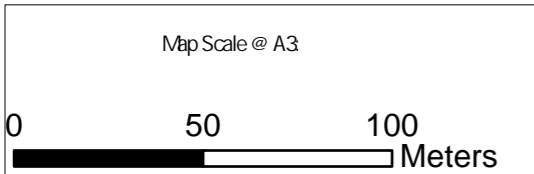
Map intended for distribution as a PDF document
Scale may be incorrect when printed.

Contains information sourced from LINZ. Crown Copyright Reserved.

Unitary plan data sourced from Auckland Council published web services. Legend information can be viewed on Auckland Council unitary plan viewer.

Linework shown on this plan is conceptual only.
Not to be used for construction.

Auckland Council, LINZ, Waikato Regional, Esri Community Maps Contributors, LINZ, Esri, HERE, Garmin, Foursquare, METI/NASA, USGS



Revision	Author	Verified	Approved	Date
1	DA	SJ	CD	22/11/22

Title: Supporting Growth
NoR R1 - Mitigation Option 2 Road Traffic Noise

Client: Supporting Growth
Project: North West Package



Discipline: GIS
Drawing No:



Noise Level	PPFs Altered
dB $L_{Aeq}(24h)$	dB $L_{Aeq}(24h)$
55 - 60	< 64
60 - 65	64 - 67
65 - 70	Other Buildings
> 70	Road
	Assessment Area

This map contains data derived in part or wholly from sources other than those party to the Supporting Growth Alliance, and therefore, no representations or warranties are made by those party to the Supporting Growth Alliance as to the accuracy or completeness of this information.

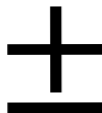
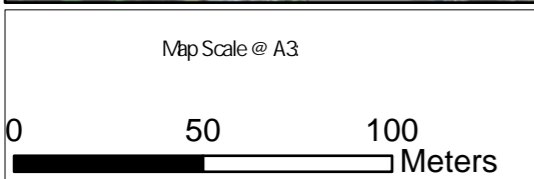
Map intended for distribution as a PDF document
Scale may be incorrect when printed.

Contains information sourced from LINZ. Crown Copyright Reserved.

Unitary plan data sourced from Auckland Council published web services.
Legend information can be viewed on Auckland Council unitary plan viewer.

Linework shown on this plan is conceptual only.
Not to be used for construction.

Auckland Council, LINZ, Esri Community Maps Contributors, LINZ, Esri, HERE, Garmin, Foursquare, METI/NASA, USGS



Revision	Author	Verified	Approved	Date
1	DA	SJ	CD	22/11/22

Title: **Supporting Growth**
NoR R2 - Existing Road Traffic Noise

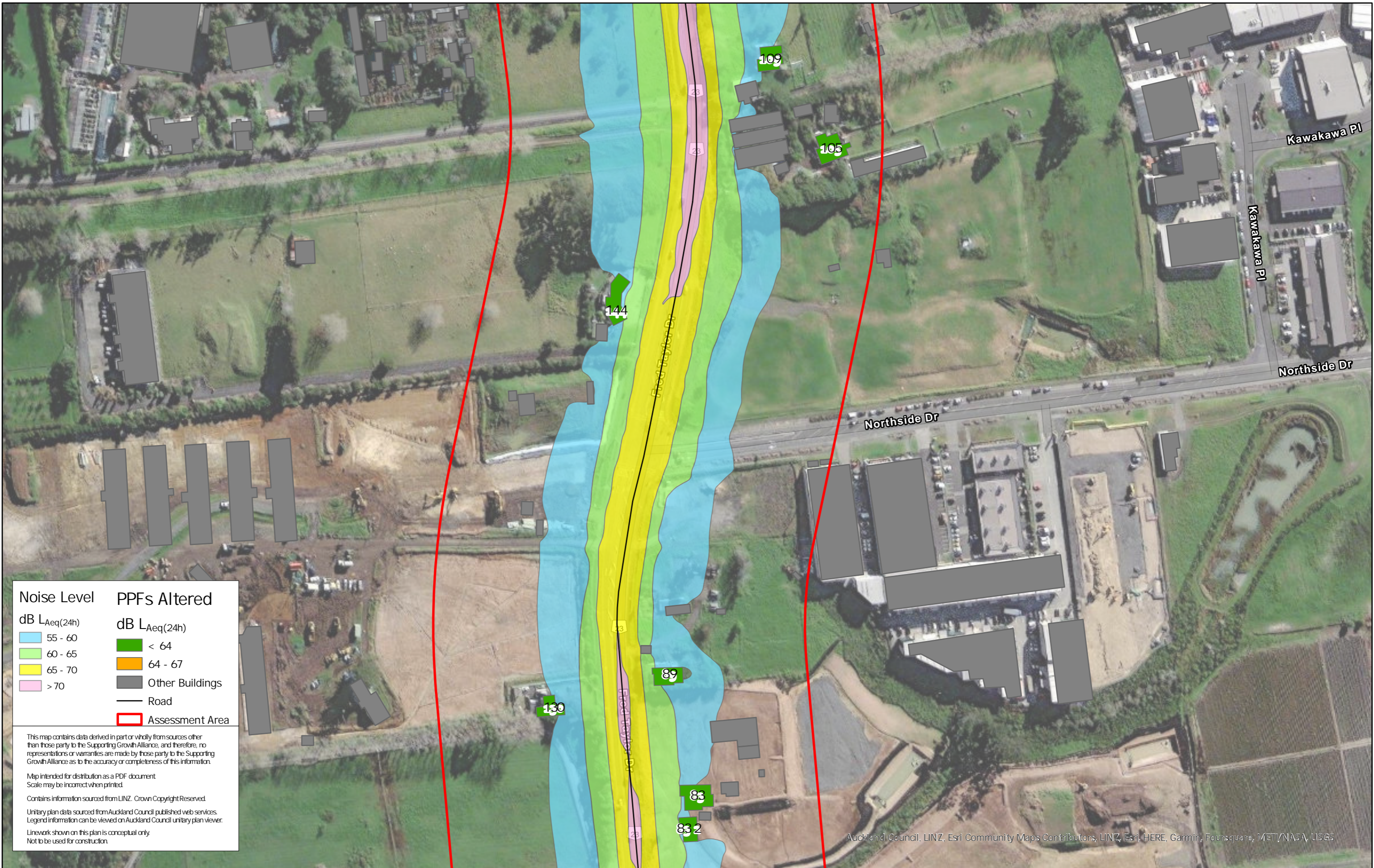
Client: Supporting Growth

Project: North West Package



Discipline: GIS

Drawing No:



Noise Level	PPFs Altered
dB $L_{Aeq}(24h)$	dB $L_{Aeq}(24h)$
55 - 60	< 64
60 - 65	64 - 67
65 - 70	Other Buildings
> 70	Road
	Assessment Area

This map contains data derived in part or wholly from sources other than those party to the Supporting Growth Alliance, and therefore, no representations or warranties are made by those party to the Supporting Growth Alliance as to the accuracy or completeness of this information.

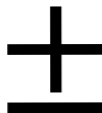
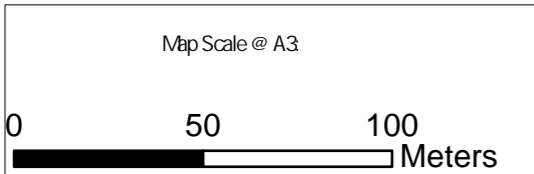
Map intended for distribution as a PDF document
Scale may be incorrect when printed.

Contains information sourced from LINZ. Crown Copyright Reserved.

Unitary plan data sourced from Auckland Council published web services.
Legend information can be viewed on Auckland Council unitary plan viewer.

Linework shown on this plan is conceptual only.
Not to be used for construction.

Auckland Council, LINZ, Esri Community Maps Contributors, LINZ, Esri, HERE, Garmin, Foursquare, METI/NASA, USGS



Revision	Author	Verified	Approved	Date
1	DA	SJ	CD	22/11/22

Title: Supporting Growth
NoR R2 - Existing Road Traffic Noise

Client: Supporting Growth
Project: North West Package



Discipline: GIS
Drawing No:



Noise Level
dB $L_{Aeq(24h)}$

- 55 - 60
- 60 - 65
- 65 - 70
- > 70

PPFs Altered
dB $L_{Aeq(24h)}$

- < 64
- 64 - 67
- Other Buildings
- Road
- Assessment Area

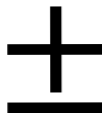
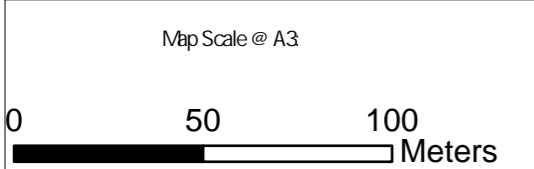
This map contains data derived in part or wholly from sources other than those party to the Supporting Growth Alliance, and therefore, no representations or warranties are made by those party to the Supporting Growth Alliance as to the accuracy or completeness of this information.

Map intended for distribution as a PDF document
Scale may be incorrect when printed.

Contains information sourced from LINZ. Crown Copyright Reserved.

Unitary plan data sourced from Auckland Council published web services.
Legend information can be viewed on Auckland Council unitary plan viewer.

Linework shown on this plan is conceptual only.
Not to be used for construction.



Revision	Author	Verified	Approved	Date
1	DA	SJ	CD	22/11/22

Title: **Supporting Growth
NoR R2 - Existing Road Traffic Noise**

Client: Supporting Growth

Project: North West Package



Discipline: GIS

Drawing No:



Noise Level	PPFs Altered
55 - 60	< 64
60 - 65	64 - 67
65 - 70	Other Buildings
> 70	Road
	Assessment Area

This map contains data derived in part or wholly from sources other than those party to the Supporting Growth Alliance, and therefore, no representations or warranties are made by those party to the Supporting Growth Alliance as to the accuracy or completeness of this information.

Map intended for distribution as a PDF document
Scale may be incorrect when printed.

Contains information sourced from LINZ. Crown Copyright Reserved.

Unitary plan data sourced from Auckland Council published web services.
Legend information can be viewed on Auckland Council unitary plan viewer.

Linework shown on this plan is conceptual only.
Not to be used for construction.

Auckland Council, LINZ, Waikato Regional, Esri Community Maps Contributors, LINZ, Esri, HERE, Garmin, Foursquare, METI/NASA, USGS

Map Scale @ A3 0 50 100 Meters	+	Revision	Author	Verified	Approved	Date	Title: Supporting Growth NoR R2 - Existing Road Traffic Noise	Client	Supporting Growth		Discipline:	GIS
		1	DA	SJ	CD	22/11/22		Project	North West Package		Drawing No:	



Noise Level	PPFs Altered
55 - 60	< 64
60 - 65	64 - 67
65 - 70	Other Buildings
> 70	Road
	Assessment Area

This map contains data derived in part or wholly from sources other than those party to the Supporting Growth Alliance, and therefore, no representations or warranties are made by those party to the Supporting Growth Alliance as to the accuracy or completeness of this information.

Map intended for distribution as a PDF document
Scale may be incorrect when printed.

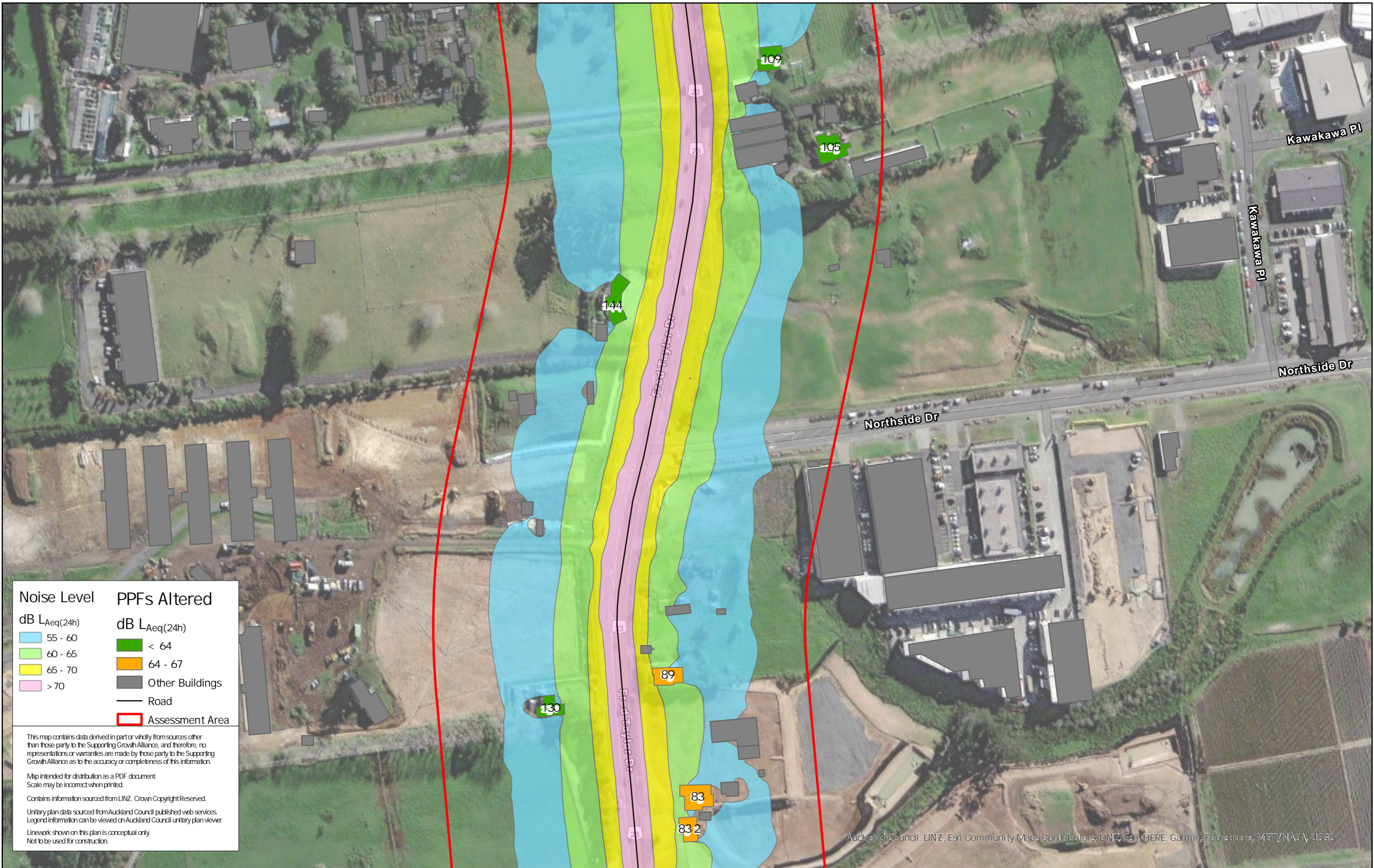
Contains information sourced from LINZ. Crown Copyright Reserved.

Unitary plan data sourced from Auckland Council published web services.
Legend information can be viewed on Auckland Council unitary plan viewer.

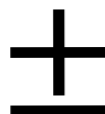
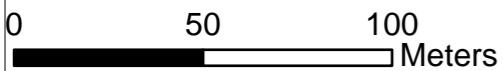
Linework shown on this plan is conceptual only.
Not to be used for construction.

Auckland Council, LINZ, Esri Community Maps Contributors, LINZ, Esri, HERE, Garmin, Foursquare, METI/NASA, USGS

Map Scale @ A3 0 50 100 Meters		Revision	Author	Verified	Approved	Date	Title: Supporting Growth NoR R2 - Do Nothing Road Traffic Noise	Client	Supporting Growth		Discipline:	GIS
		1	DA	SJ	CD	22/11/22		Project	North West Package		Drawing No:	



Map Scale @ A3



Revision	Author	Verified	Approved	Date
1	DA	SJ	CD	22/11/22

Title: **Supporting Growth
 NoR R2 - Do Nothing Road Traffic Noise**

Client: Supporting Growth
 Project: North West Package



Discipline: GIS
 Drawing No:



Noise Level	PPFs Altered
55 - 60	< 64
60 - 65	64 - 67
65 - 70	Other Buildings
> 70	Road
	Assessment Area

This map contains data derived in part or wholly from sources other than those party to the Supporting Growth Alliance, and therefore, no representations or warranties are made by those party to the Supporting Growth Alliance as to the accuracy or completeness of this information.

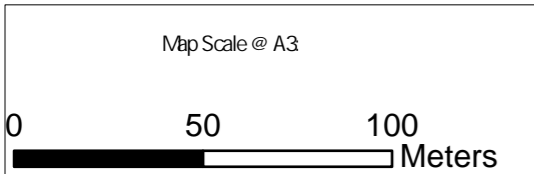
Map intended for distribution as a PDF document
Scale may be incorrect when printed.

Contains information sourced from LINZ. Crown Copyright Reserved.

Unitary plan data sourced from Auckland Council published web services.
Legend information can be viewed on Auckland Council unitary plan viewer.

Linework shown on this plan is conceptual only.
Not to be used for construction.

Auckland Council, LINZ, Esri Community Maps Contributors, LINZ, Esri, HERE, Garmin, Foursquare, METI/NASA, USGS



Revision	Author	Verified	Approved	Date
1	DA	SJ	CD	22/11/22

Title: Supporting Growth
NoR R2 - Do Nothing Road Traffic Noise

Client: Supporting Growth
Project: North West Package



Discipline: GIS
Drawing No:



Noise Level	PPFs Altered
dB $L_{Aeq}(24h)$	dB $L_{Aeq}(24h)$
55 - 60	< 64
60 - 65	64 - 67
65 - 70	Other Buildings
> 70	Road
	Assessment Area

This map contains data derived in part or wholly from sources other than those party to the Supporting Growth Alliance, and therefore, no representations or warranties are made by those party to the Supporting Growth Alliance as to the accuracy or completeness of this information.

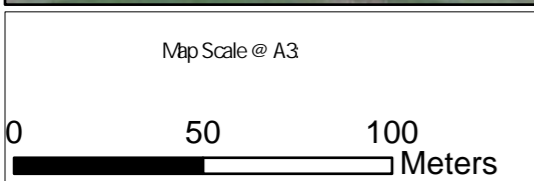
Map intended for distribution as a PDF document
Scale may be incorrect when printed.

Contains information sourced from LINZ. Crown Copyright Reserved.

Unitary plan data sourced from Auckland Council published web services.
Legend information can be viewed on Auckland Council unitary plan viewer.

Linework shown on this plan is conceptual only.
Not to be used for construction.

Auckland Council, LINZ, Waikato Regional, Esri Community Maps Contributors, LINZ, Esri, HERE, Garmin, Foursquare, METI/NASA, USGS



Revision	Author	Verified	Approved	Date
1	DA	SJ	CD	22/11/22

Title: Supporting Growth
NoR R2 - Do Nothing Road Traffic Noise

Client: Supporting Growth
Project: North West Package



Discipline: GIS
Drawing No: