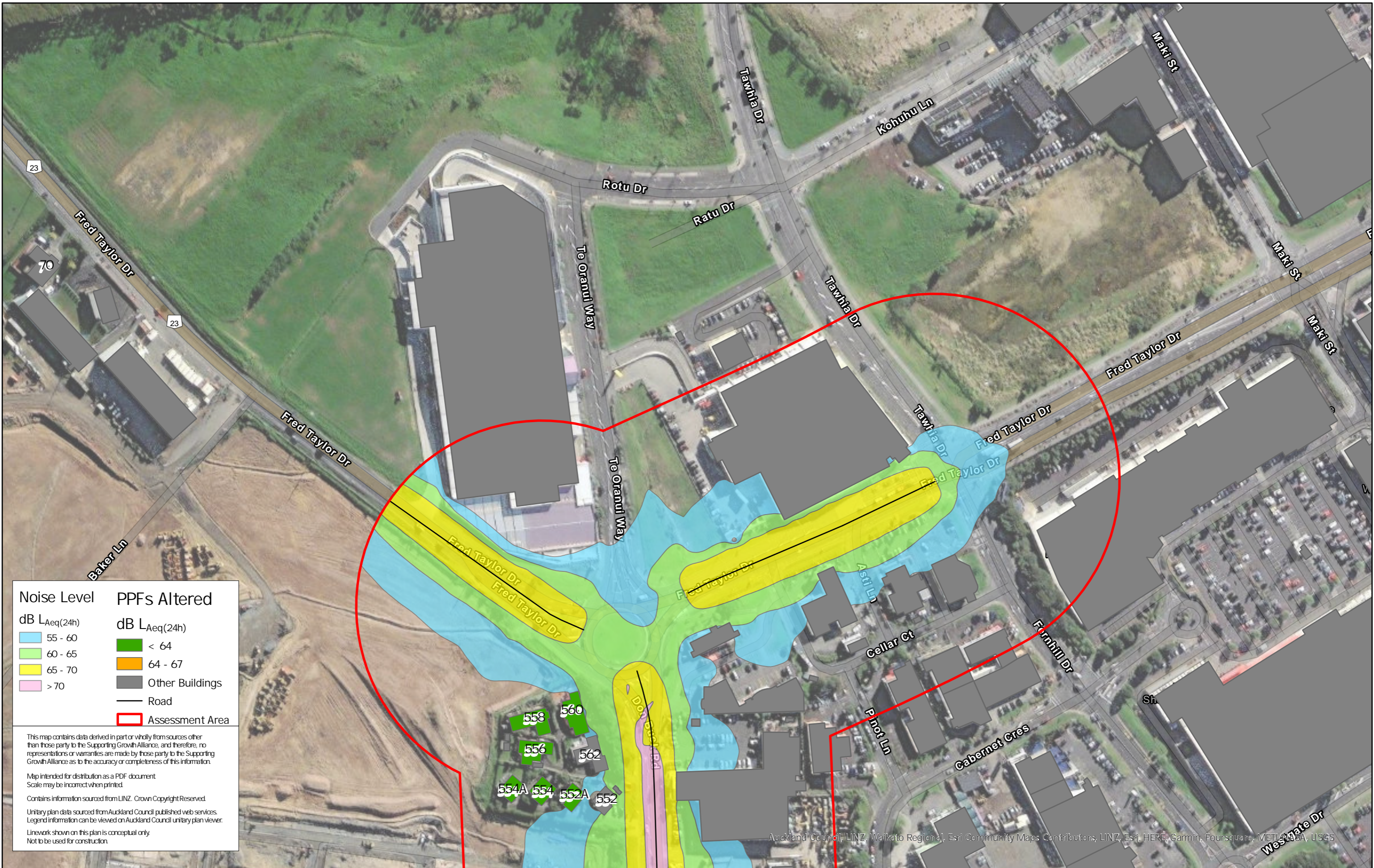


### 3 Appendix 3: Noise Contour Maps





Noise Level	PPFs Altered
dB $L_{Aeq}(24h)$	dB $L_{Aeq}(24h)$
55 - 60	< 64
60 - 65	64 - 67
65 - 70	Other Buildings
> 70	Road
	Assessment Area

This map contains data derived in part or wholly from sources other than those party to the Supporting Growth Alliance, and therefore, no representations or warranties are made by those party to the Supporting Growth Alliance as to the accuracy or completeness of this information.

Map intended for distribution as a PDF document  
Scale may be incorrect when printed.

Contains information sourced from LINZ. Crown Copyright Reserved.

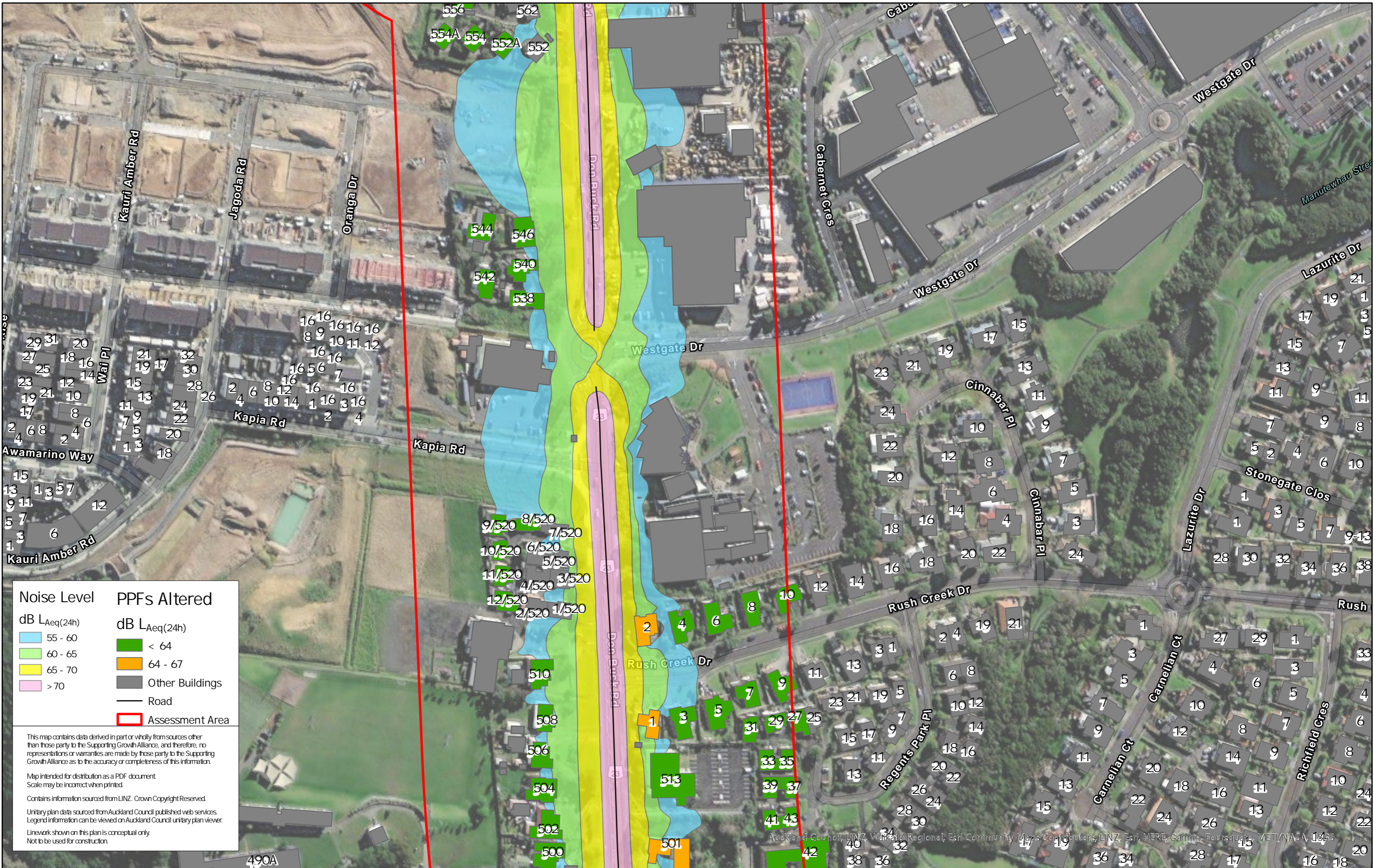
Unitary plan data sourced from Auckland Council published web services. Legend information can be viewed on Auckland Council unitary plan viewer.

Linework shown on this plan is conceptual only.  
Not to be used for construction.

Auckland Council, LINZ, Waikato Regional, Esri Community Maps Contributors, LINZ, Esri, HERE, Garmin, Foursquare, METI/ANSA, USGS

Map Scale @ A3 0 50 100 Meters	<table border="1"> <thead> <tr> <th>Revision</th> <th>Author</th> <th>Verified</th> <th>Approved</th> <th>Date</th> </tr> </thead> <tbody> <tr> <td>1</td> <td>DA</td> <td>SJ</td> <td>CD</td> <td>22/11/22</td> </tr> </tbody> </table>	Revision	Author	Verified	Approved	Date	1	DA	SJ	CD	22/11/22	<b>Title:</b> Supporting Growth NoR R1 - Existing Road Traffic Noise	<b>Client:</b> Supporting Growth		<b>Discipline:</b> GIS
		Revision	Author	Verified	Approved	Date									
1	DA	SJ	CD	22/11/22											
<b>Project:</b> North West Package	<b>Drawing No:</b>														





Noise Level	PPFs Altered
55 - 60	< 64
60 - 65	64 - 67
65 - 70	Other Buildings
> 70	Road
	Assessment Area

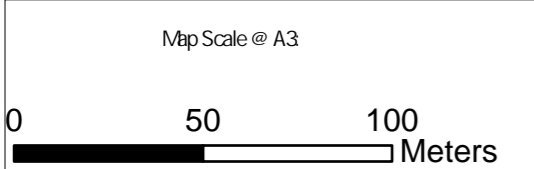
This map contains data derived in part or wholly from sources other than those party to the Supporting Growth Alliance, and therefore, no representations or warranties are made by those party to the Supporting Growth Alliance as to the accuracy or completeness of this information.

Map intended for distribution as a PDF document  
Scale may be incorrect when printed.

Contains information sourced from LINZ. Crown Copyright Reserved.

Unitary plan data sourced from Auckland Council published web services. Legend information can be viewed on Auckland Council unitary plan viewer.

Linework shown on this plan is conceptual only.  
Not to be used for construction.



Revision	Author	Verified	Approved	Date
1	DA	SJ	CD	22/11/22

**Supporting Growth**  
**NoR R1 - Existing Road Traffic Noise**

Client: Supporting Growth  
 Project: North West Package



Discipline: GIS  
 Drawing No:





Noise Level	PPFs Altered
55 - 60	< 64
60 - 65	64 - 67
65 - 70	Other Buildings
> 70	Road
	Assessment Area

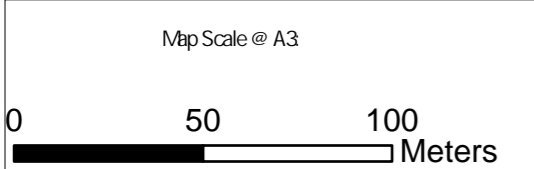
This map contains data derived in part or wholly from sources other than those party to the Supporting Growth Alliance, and therefore, no representations or warranties are made by those party to the Supporting Growth Alliance as to the accuracy or completeness of this information.

Map intended for distribution as a PDF document  
Scale may be incorrect when printed.

Contains information sourced from LINZ. Crown Copyright Reserved.

Unitary plan data sourced from Auckland Council published web services. Legend information can be viewed on Auckland Council unitary plan viewer.

Linework shown on this plan is conceptual only.  
Not to be used for construction.



Revision	Author	Verified	Approved	Date	Title
1	DA	SJ	CD	22/11/22	

Supporting Growth  
NoR R1 - Existing Road Traffic Noise

Client: Supporting Growth  
Project: North West Package



Discipline: GIS  
Drawing No:





Noise Level	PPFs Altered
dB $L_{Aeq}(24h)$	dB $L_{Aeq}(24h)$
55 - 60	< 64
60 - 65	64 - 67
65 - 70	Other Buildings
> 70	Road
	Assessment Area

This map contains data derived in part or wholly from sources other than those party to the Supporting Growth Alliance, and therefore, no representations or warranties are made by those party to the Supporting Growth Alliance as to the accuracy or completeness of this information.

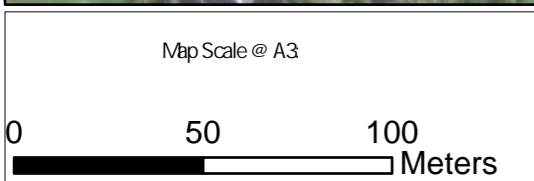
Map intended for distribution as a PDF document  
Scale may be incorrect when printed.

Contains information sourced from LINZ. Crown Copyright Reserved.

Unitary plan data sourced from Auckland Council published web services. Legend information can be viewed on Auckland Council unitary plan viewer.

Linework shown on this plan is conceptual only.  
Not to be used for construction.

Auckland Council, LINZ, Waikato Regional, Esri Community Maps Contributors, LINZ, Esri, HERE, Garmin, Foursquare, METI/NASA, USGS



Revision	Author	Verified	Approved	Date
1	DA	SJ	CD	22/11/22

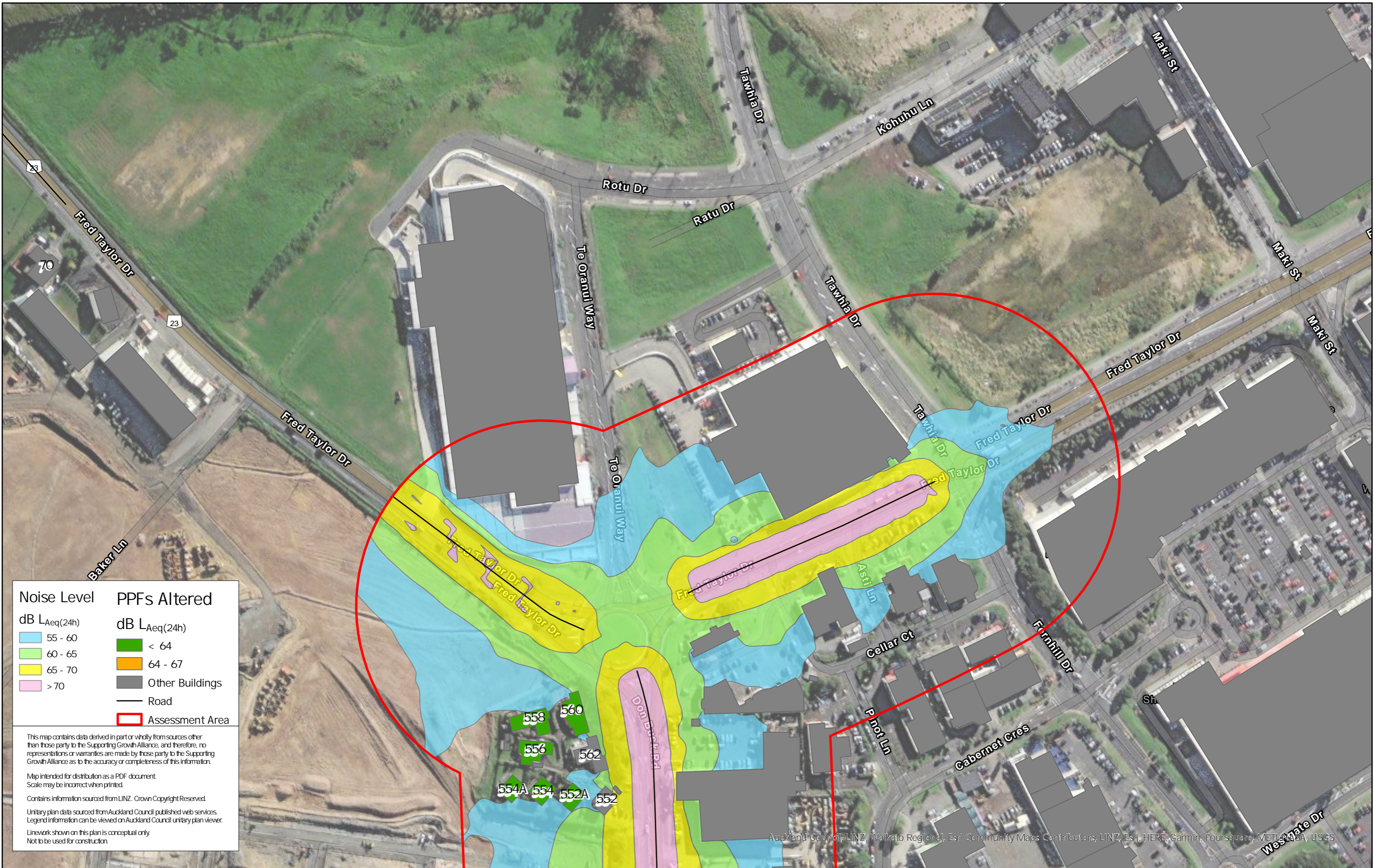
Title: Supporting Growth  
NoR R1 - Existing Road Traffic Noise

Client: Supporting Growth  
Project: North West Package



Discipline: GIS  
Drawing No:





Noise Level	PPFs Altered
dB $L_{Aeq}(24h)$	dB $L_{Aeq}(24h)$
55 - 60	< 64
60 - 65	64 - 67
65 - 70	Other Buildings
> 70	Road
	Assessment Area

This map contains data derived in part or wholly from sources other than those party to the Supporting Growth Alliance, and therefore, no representations or warranties are made by those party to the Supporting Growth Alliance as to the accuracy or completeness of this information.

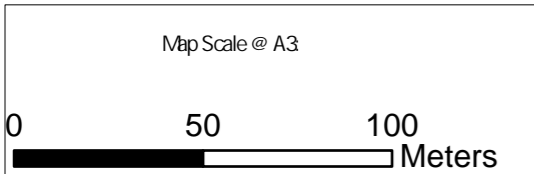
Map intended for distribution as a PDF document  
Scale may be incorrect when printed.

Contains information sourced from LINZ. Crown Copyright Reserved.

Unitary plan data sourced from Auckland Council published web services. Legend information can be viewed on Auckland Council unitary plan viewer.

Linework shown on this plan is conceptual only.  
Not to be used for construction.

Auckland Council, LINZ, Waikato Regional, Esri Community Maps Contributors, LINZ, Esri, HERE, Garmin, Foursquare, METI/ANSA, USGS



Revision	Author	Verified	Approved	Date
1	DA	SJ	CD	22/11/22

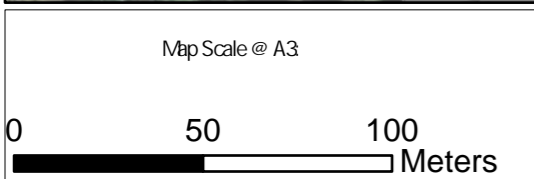
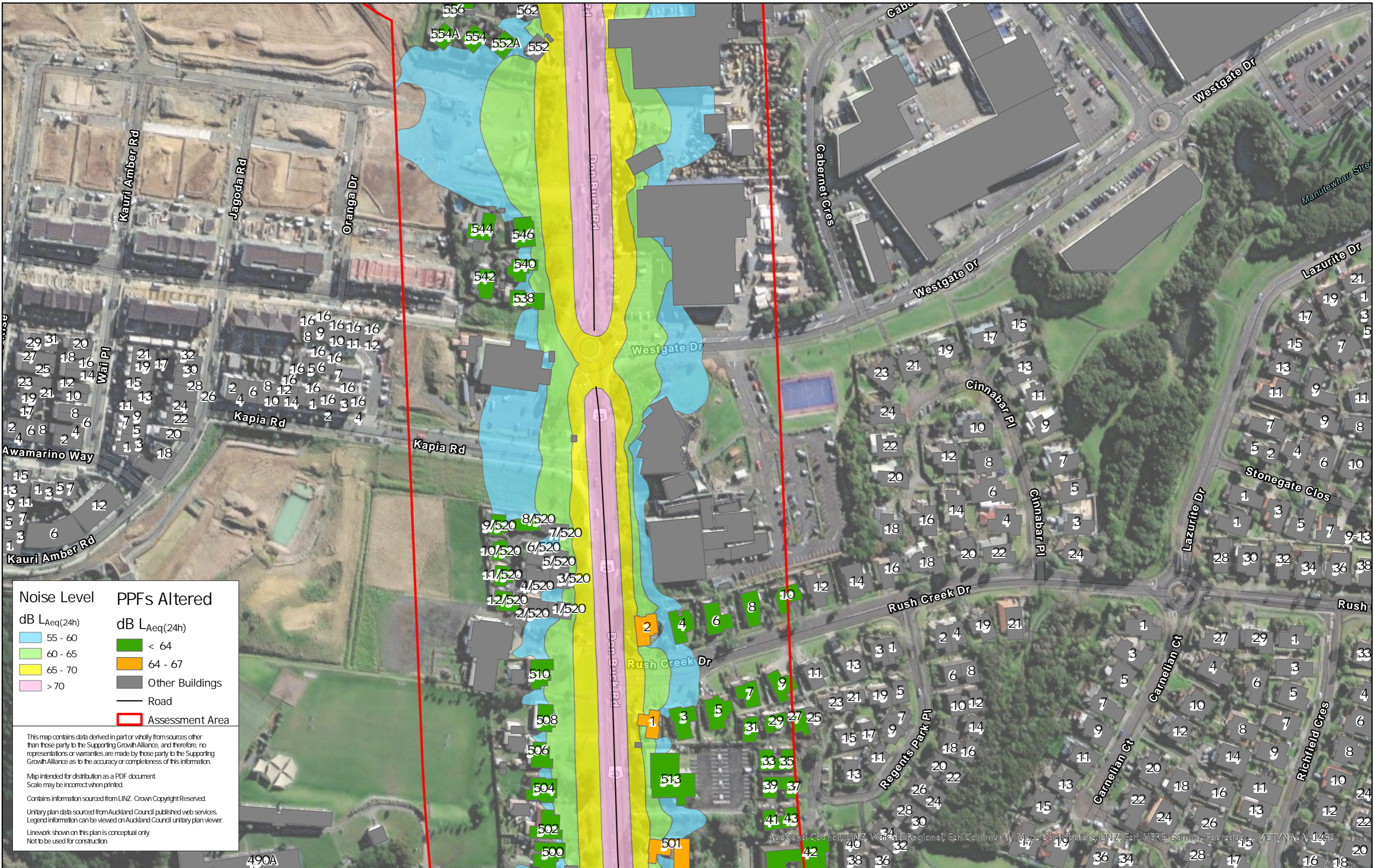
Title: Supporting Growth  
NoR R1 - Do Nothing Road Traffic Noise

Client: Supporting Growth  
Project: North West Package



Discipline: GIS  
Drawing No:





Revision	Author	Verified	Approved	Date	Title
1	DA	SJ	CD	22/11/22	Supporting Growth NoR R1 - Do Nothing Road Traffic Noise

Client: Supporting Growth

Project: North West Package

Discipline: GIS

Drawing No:



Auckland Council, LINZ, Waikato Regional, Esri, Community Maps Contributors, LINZ, Esri, HERE, Garmin, Foursquare, METI/NASA, IGN





**Noise Level**  
dB LAeq(24h)

- 55 - 60
- 60 - 65
- 65 - 70
- > 70

**PPFs Altered**  
dB LAeq(24h)

- < 64
- 64 - 67
- Other Buildings
- Road
- Assessment Area

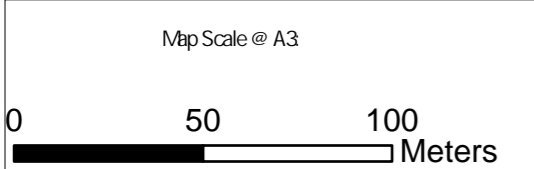
This map contains data derived in part or wholly from sources other than those party to the Supporting Growth Alliance, and therefore, no representations or warranties are made by those party to the Supporting Growth Alliance as to the accuracy or completeness of this information.

Map intended for distribution as a PDF document  
Scale may be incorrect when printed.

Contains information sourced from LINZ. Crown Copyright Reserved.

Unitary plan data sourced from Auckland Council published web services. Legend information can be viewed on Auckland Council unitary plan viewer.

Linework shown on this plan is conceptual only.  
Not to be used for construction.



Revision	Author	Verified	Approved	Date	Title
1	DA	SJ	CD	22/11/22	

**Supporting Growth**  
**NoR R1 - Do Nothing Road Traffic Noise**

Client: Supporting Growth

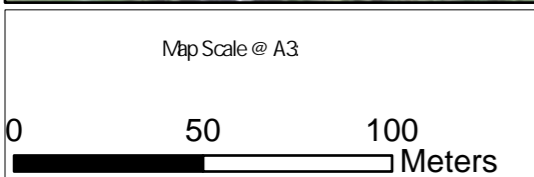
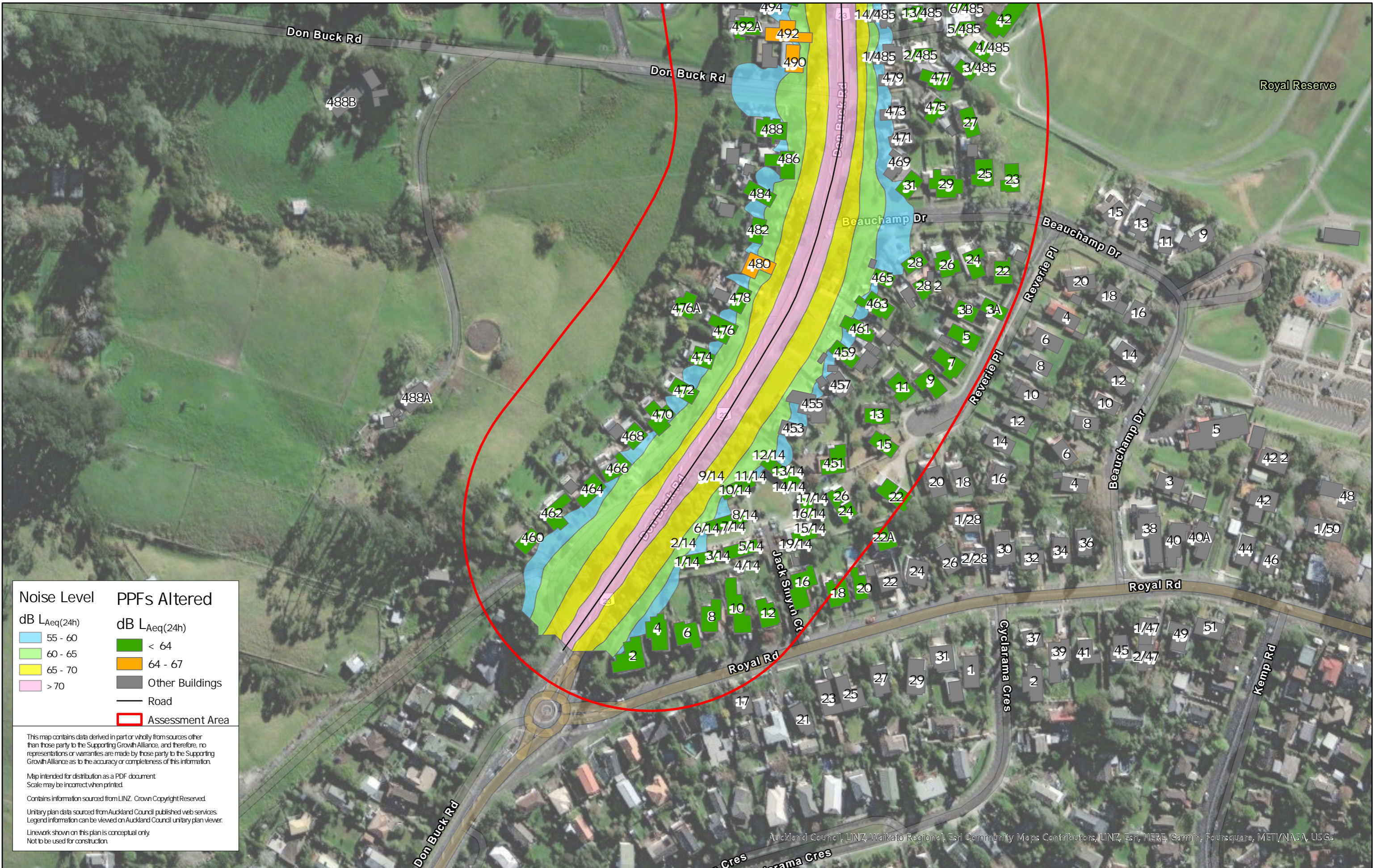
Project: North West Package



Discipline: GIS

Drawing No:





Revision	Author	Verified	Approved	Date	Title
1	DA	SJ	CD	22/11/22	Supporting Growth NoR R1 - Do Nothing Road Traffic Noise

Client: Supporting Growth

Project: North West Package

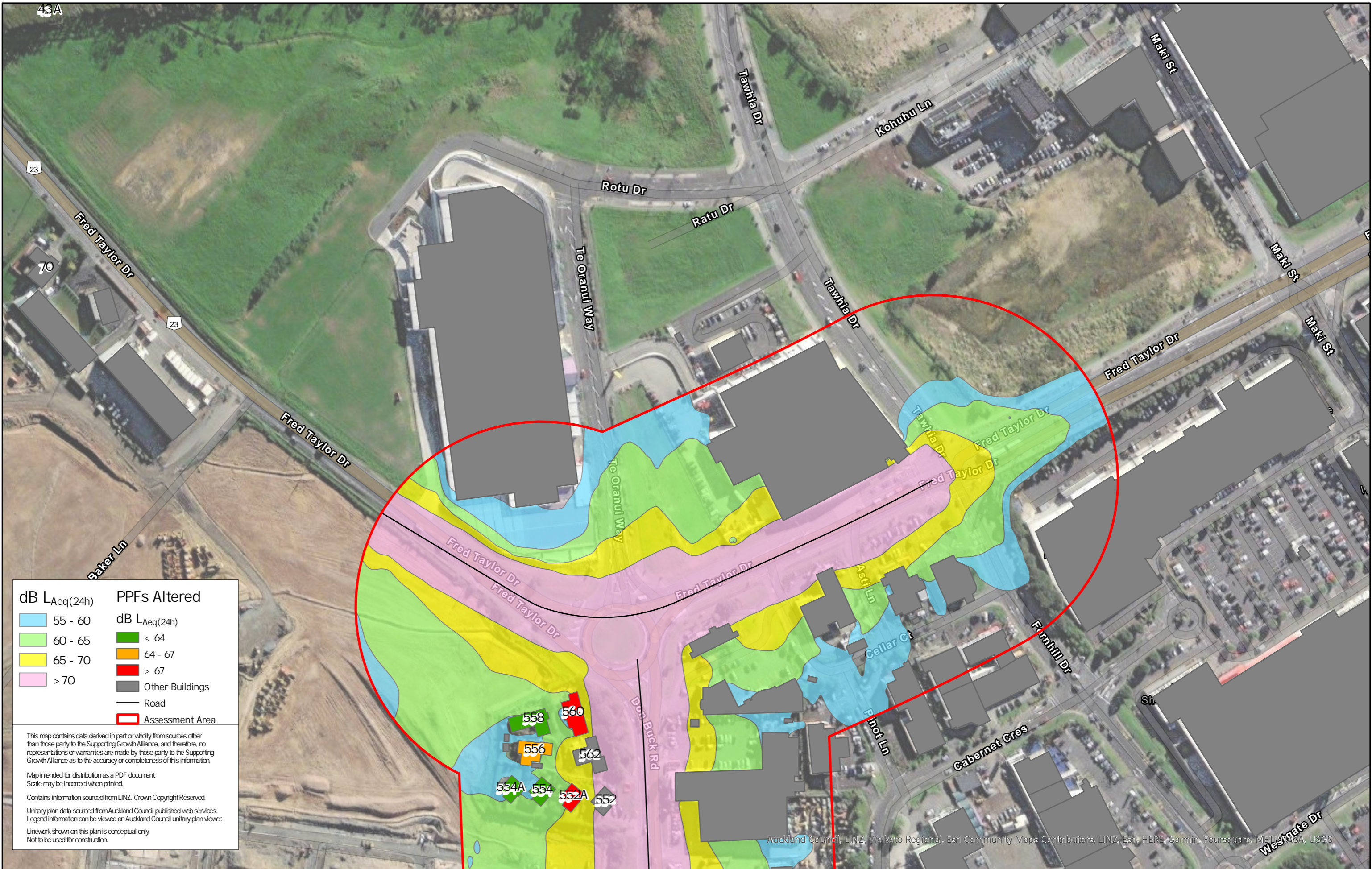
Discipline: GIS

Drawing No:



Auckland Council, LINZ, Waikato Regional, Esri Community Maps Contributors, LINZ, Esri, HERE, Garmin, Foursquare, METI/NASA, USGS





dB LAeq(24h)		PPFs Altered	
Light Blue	55 - 60	Green	< 64
Light Green	60 - 65	Orange	64 - 67
Yellow	65 - 70	Red	> 67
Pink	> 70	Grey	Other Buildings
Black line	Road	Red outline	Assessment Area

This map contains data derived in part or wholly from sources other than those party to the Supporting Growth Alliance, and therefore, no representations or warranties are made by those party to the Supporting Growth Alliance as to the accuracy or completeness of this information.

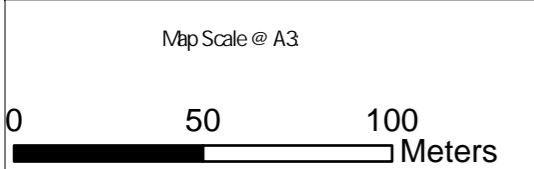
Map intended for distribution as a PDF document  
Scale may be incorrect when printed.

Contains information sourced from LINZ. Crown Copyright Reserved.

Unitary plan data sourced from Auckland Council published web services.  
Legend information can be viewed on Auckland Council unitary plan viewer.

Linework shown on this plan is conceptual only.  
Not to be used for construction.

Auckland Council, LINZ, Waikato Regional, Esri Community Maps Contributors, LINZ, Esri, HERE, Garmin, Foursquare, METI, NASA, USGS



Revision	Author	Verified	Approved	Date	Title
1	DA	SJ	CD	22/11/22	

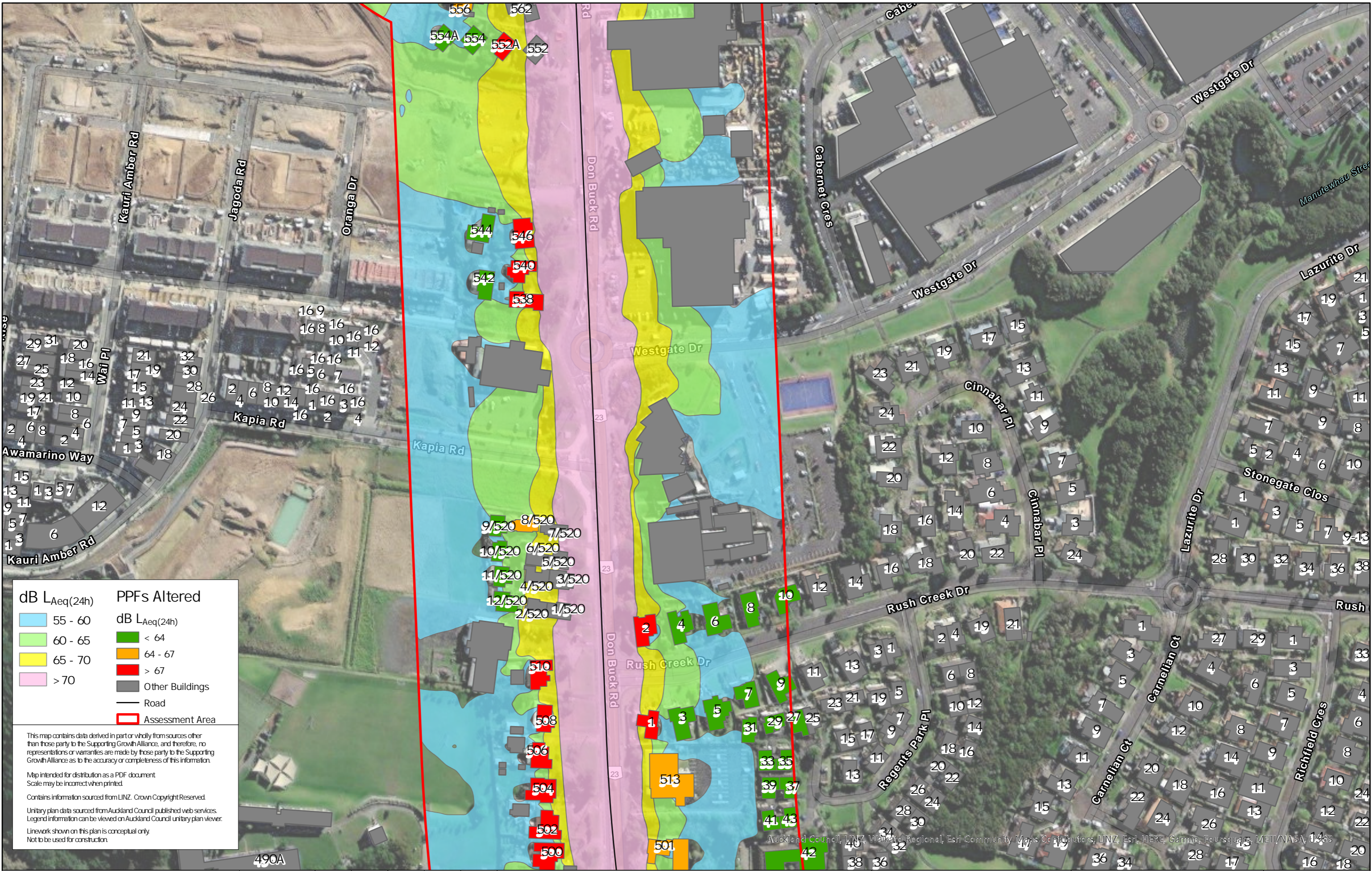
**Supporting Growth**  
NoR R1 - Do Minimum Road Traffic Noise

Client: Supporting Growth  
Project: North West Package



Discipline: GIS  
Drawing No:





**dB LAeq(24h)**

- 55 - 60
- 60 - 65
- 65 - 70
- > 70

**PPFs Altered**

- < 64
- 64 - 67
- > 67
- Other Buildings
- Road
- Assessment Area

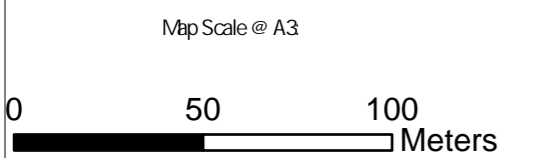
This map contains data derived in part or wholly from sources other than those party to the Supporting Growth Alliance, and therefore, no representations or warranties are made by those party to the Supporting Growth Alliance as to the accuracy or completeness of this information.

Map intended for distribution as a PDF document  
Scale may be incorrect when printed.

Contains information sourced from LINZ. Crown Copyright Reserved.

Unitary plan data sourced from Auckland Council published web services.  
Legend information can be viewed on Auckland Council unitary plan viewer.

Linework shown on this plan is conceptual only.  
Not to be used for construction.



Revision	Author	Verified	Approved	Date	Title
1	DA	SJ	CD	22/11/22	

**Supporting Growth**  
**NoR R1 - Do Minimum Road Traffic Noise**

Client	Supporting Growth
Project	North West Package



Discipline:	GIS
Drawing No:	





dB LAeq(24h)		PPFs Altered	
Light Blue	55 - 60	Green	< 64
Light Green	60 - 65	Orange	64 - 67
Yellow	65 - 70	Red	> 67
Pink	> 70	Grey	Other Buildings
		Black Line	Road
		Red Outline	Assessment Area

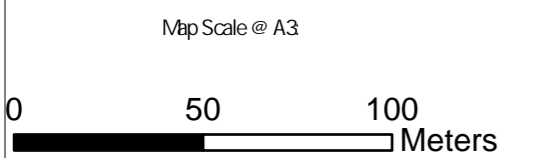
This map contains data derived in part or wholly from sources other than those party to the Supporting Growth Alliance, and therefore, no representations or warranties are made by those party to the Supporting Growth Alliance as to the accuracy or completeness of this information.

Map intended for distribution as a PDF document  
Scale may be incorrect when printed.

Contains information sourced from LINZ. Crown Copyright Reserved.

Unitary plan data sourced from Auckland Council published web services. Legend information can be viewed on Auckland Council unitary plan viewer.

Linework shown on this plan is conceptual only.  
Not to be used for construction.



Revision	Author	Verified	Approved	Date	Title
1	DA	SJ	CD	22/11/22	

Supporting Growth  
NoR R1 - Do Minimum Road Traffic Noise

Client	Supporting Growth
Project	North West Package



Discipline:	GIS
Drawing No:	





dB LAeq(24h)		PPFs Altered	
<span style="background-color: #ADD8E6; border: 1px solid black; display: inline-block; width: 15px; height: 10px;"></span> 55 - 60	<span style="background-color: #90EE90; border: 1px solid black; display: inline-block; width: 15px; height: 10px;"></span> < 64	<span style="background-color: #FFD700; border: 1px solid black; display: inline-block; width: 15px; height: 10px;"></span> 64 - 67	<span style="background-color: #808080; border: 1px solid black; display: inline-block; width: 15px; height: 10px;"></span> Other Buildings
<span style="background-color: #90EE90; border: 1px solid black; display: inline-block; width: 15px; height: 10px;"></span> 60 - 65	<span style="background-color: #FF8C00; border: 1px solid black; display: inline-block; width: 15px; height: 10px;"></span> 64 - 67	<span style="background-color: #FF0000; border: 1px solid black; display: inline-block; width: 15px; height: 10px;"></span> > 67	<span style="border-bottom: 1px solid black; width: 15px; display: inline-block;"></span> Road
<span style="background-color: #FFFF00; border: 1px solid black; display: inline-block; width: 15px; height: 10px;"></span> 65 - 70	<span style="background-color: #FF0000; border: 1px solid black; display: inline-block; width: 15px; height: 10px;"></span> > 67		<span style="border: 2px solid red; width: 15px; height: 10px; display: inline-block;"></span> Assessment Area
<span style="background-color: #FFB6C1; border: 1px solid black; display: inline-block; width: 15px; height: 10px;"></span> > 70			

This map contains data derived in part or wholly from sources other than those party to the Supporting Growth Alliance, and therefore, no representations or warranties are made by those party to the Supporting Growth Alliance as to the accuracy or completeness of this information.

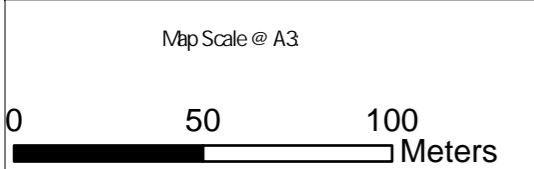
Map intended for distribution as a PDF document  
Scale may be incorrect when printed.

Contains information sourced from LINZ. Crown Copyright Reserved.

Unitary plan data sourced from Auckland Council published web services. Legend information can be viewed on Auckland Council unitary plan viewer.

Linework shown on this plan is conceptual only.  
Not to be used for construction.

Auckland Council, LINZ, Waikato Regional, Esri Community Maps Contributors, LINZ, Esri, HERE, Garmin, Pousquare, METI/NASA, USGS



Revision	Author	Verified	Approved	Date
1	DA	SJ	CD	22/11/22

Title: Supporting Growth  
NoR R1 - Do Minimum Road Traffic Noise

Client: Supporting Growth  
Project: North West Package

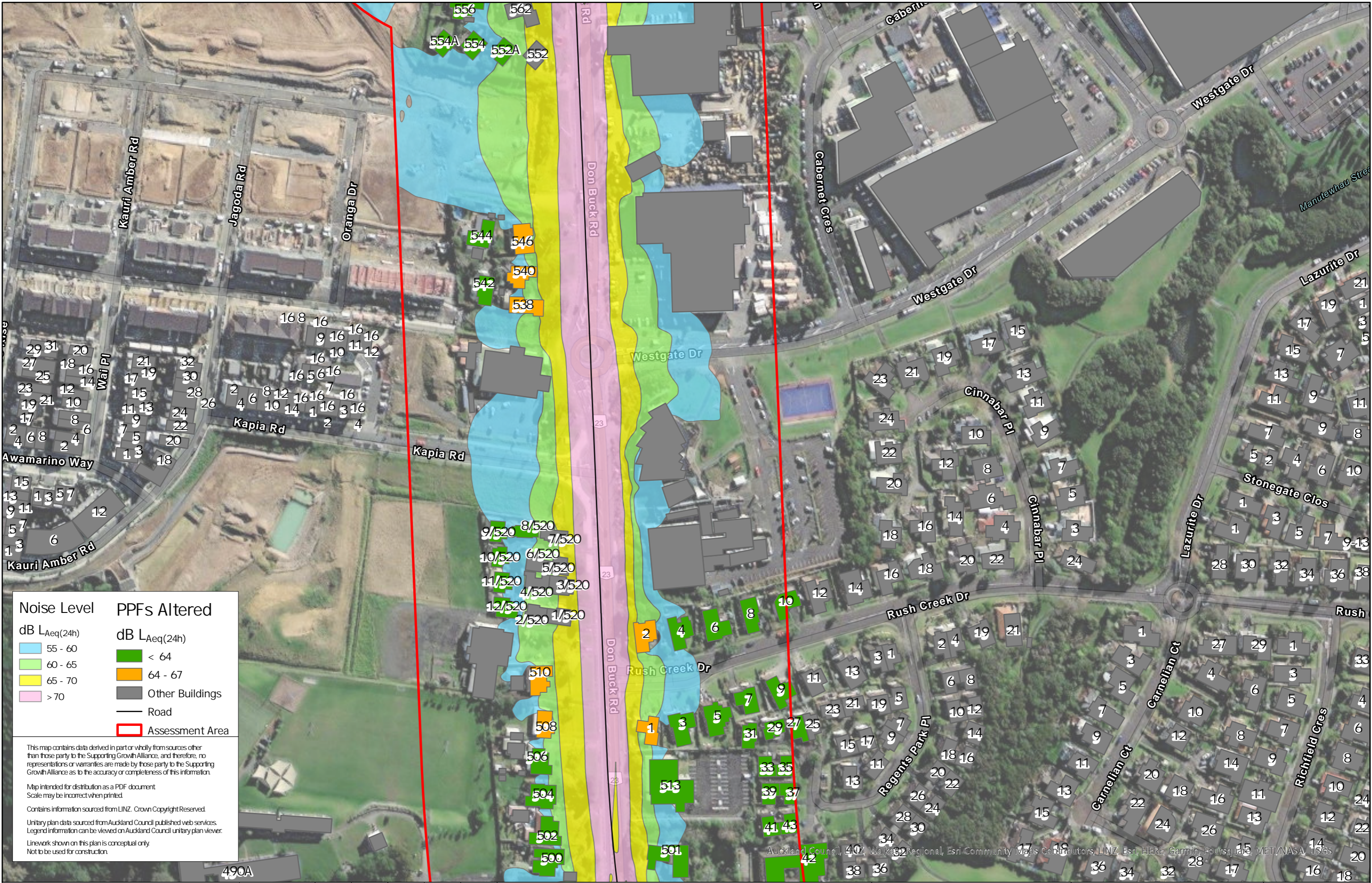


Discipline: GIS  
Drawing No:









**Noise Level**  
dB LAeq(24h)

- 55 - 60
- 60 - 65
- 65 - 70
- > 70

**PPFs Altered**  
dB LAeq(24h)

- < 64
- 64 - 67

Other Buildings  
 Road  
 Assessment Area

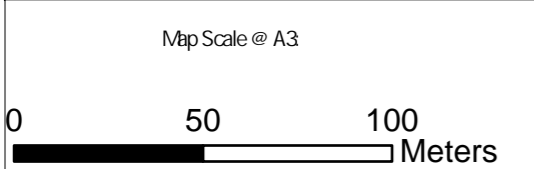
This map contains data derived in part or wholly from sources other than those party to the Supporting Growth Alliance, and therefore, no representations or warranties are made by those party to the Supporting Growth Alliance as to the accuracy or completeness of this information.

Map intended for distribution as a PDF document  
Scale may be incorrect when printed.

Contains information sourced from LINZ. Crown Copyright Reserved.

Unitary plan data sourced from Auckland Council published web services. Legend information can be viewed on Auckland Council unitary plan viewer.

Linework shown on this plan is conceptual only.  
Not to be used for construction.



Revision	Author	Verified	Approved	Date
1	DA	SJ	CD	22/11/22

**Title:**  
Supporting Growth  
NoR R1 - Mitigation Option 1 Road Traffic Noise

**Client:** Supporting Growth  
**Project:** North West Package



**Discipline:** GIS  
**Drawing No:**

Auckland Council, LINZ, Waikato Regional, Esri Community Maps Contributors, LINZ, Esri, HERE, Garmin, Foursquare, MET, NASA, USGS





Noise Level	PPFs Altered
55 - 60	< 64
60 - 65	64 - 67
65 - 70	Other Buildings
> 70	Road
	Assessment Area

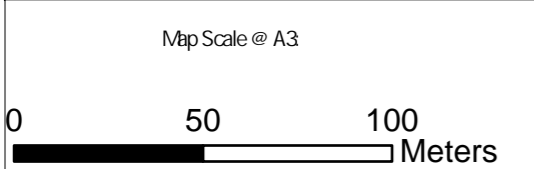
This map contains data derived in part or wholly from sources other than those party to the Supporting Growth Alliance, and therefore, no representations or warranties are made by those party to the Supporting Growth Alliance as to the accuracy or completeness of this information.

Map intended for distribution as a PDF document  
Scale may be incorrect when printed.

Contains information sourced from LINZ. Crown Copyright Reserved.

Unitary plan data sourced from Auckland Council published web services. Legend information can be viewed on Auckland Council unitary plan viewer.

Linework shown on this plan is conceptual only.  
Not to be used for construction.



Revision	Author	Verified	Approved	Date	Title
1	DA	SJ	CD	22/11/22	

**Supporting Growth**  
NoR R1 - Mitigation Option 1 Road Traffic Noise

Client: Supporting Growth  
Project: North West Package



Discipline: GIS  
Drawing No:

Auckland Council, LINZ, Waikato Regional Council, Esri Community Maps Contributors, LINZ, Esri, HERE, Garmin, Foursquare, METI/NASA, USGS





Noise Level	PPFs Altered
dB $L_{Aeq}(24h)$	dB $L_{Aeq}(24h)$
55 - 60	< 64
60 - 65	64 - 67
65 - 70	Other Buildings
> 70	Road
	Assessment Area

This map contains data derived in part or wholly from sources other than those party to the Supporting Growth Alliance, and therefore, no representations or warranties are made by those party to the Supporting Growth Alliance as to the accuracy or completeness of this information.

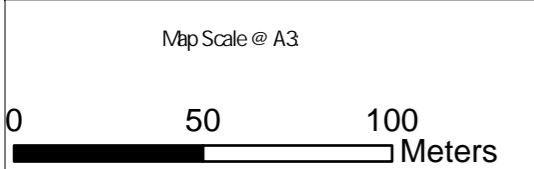
Map intended for distribution as a PDF document  
Scale may be incorrect when printed.

Contains information sourced from LINZ. Crown Copyright Reserved.

Unitary plan data sourced from Auckland Council published web services. Legend information can be viewed on Auckland Council unitary plan viewer.

Linework shown on this plan is conceptual only.  
Not to be used for construction.

Auckland Council, LINZ, Waikato Regional, Esri, Community Maps Contributors, LINZ, Esri, HERE, Garmin, Foursquare, METI/NASA, USGS



Revision	Author	Verified	Approved	Date
1	DA	SJ	CD	22/11/22

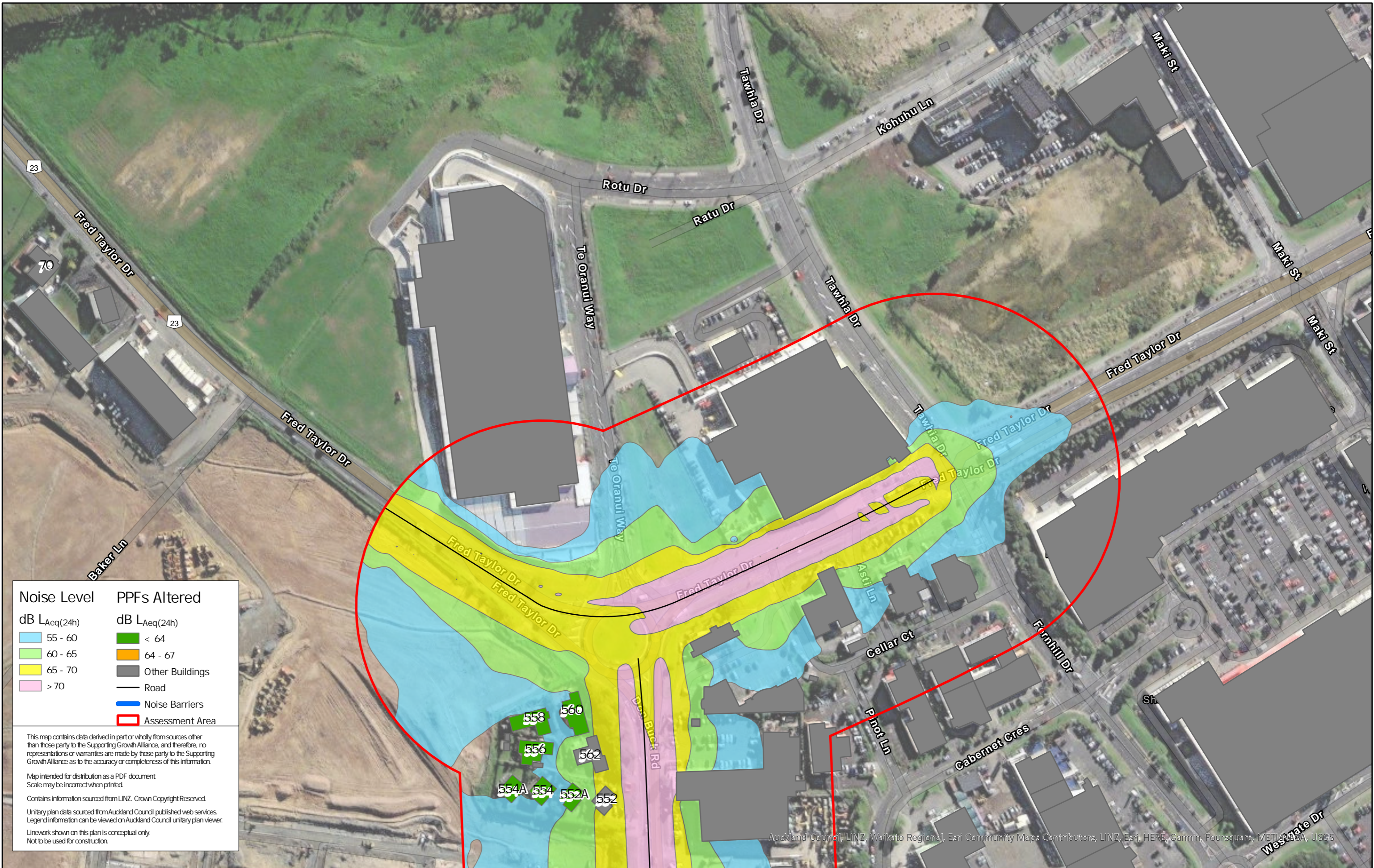
**Title:** Supporting Growth  
NoR R1 - Mitigation Option 1 Road Traffic Noise

**Client:** Supporting Growth  
**Project:** North West Package



**Discipline:** GIS  
**Drawing No:**





Noise Level	PPFs Altered
55 - 60	< 64
60 - 65	64 - 67
65 - 70	Other Buildings
> 70	Road
	Noise Barriers
	Assessment Area

This map contains data derived in part or wholly from sources other than those party to the Supporting Growth Alliance, and therefore, no representations or warranties are made by those party to the Supporting Growth Alliance as to the accuracy or completeness of this information.

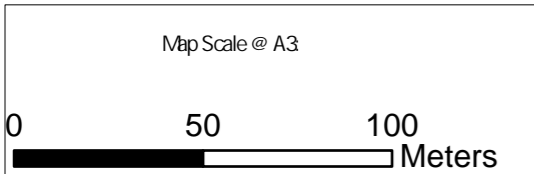
Map intended for distribution as a PDF document  
Scale may be incorrect when printed.

Contains information sourced from LINZ. Crown Copyright Reserved.

Unitary plan data sourced from Auckland Council published web services. Legend information can be viewed on Auckland Council unitary plan viewer.

Linework shown on this plan is conceptual only.  
Not to be used for construction.

Auckland Council, LINZ, Waikato Regional, Esri Community Maps Contributors, LINZ, Esri, HERE, Garmin, Foursquare, METI/USA, USGS



Revision	Author	Verified	Approved	Date
1	DA	SJ	CD	22/11/22

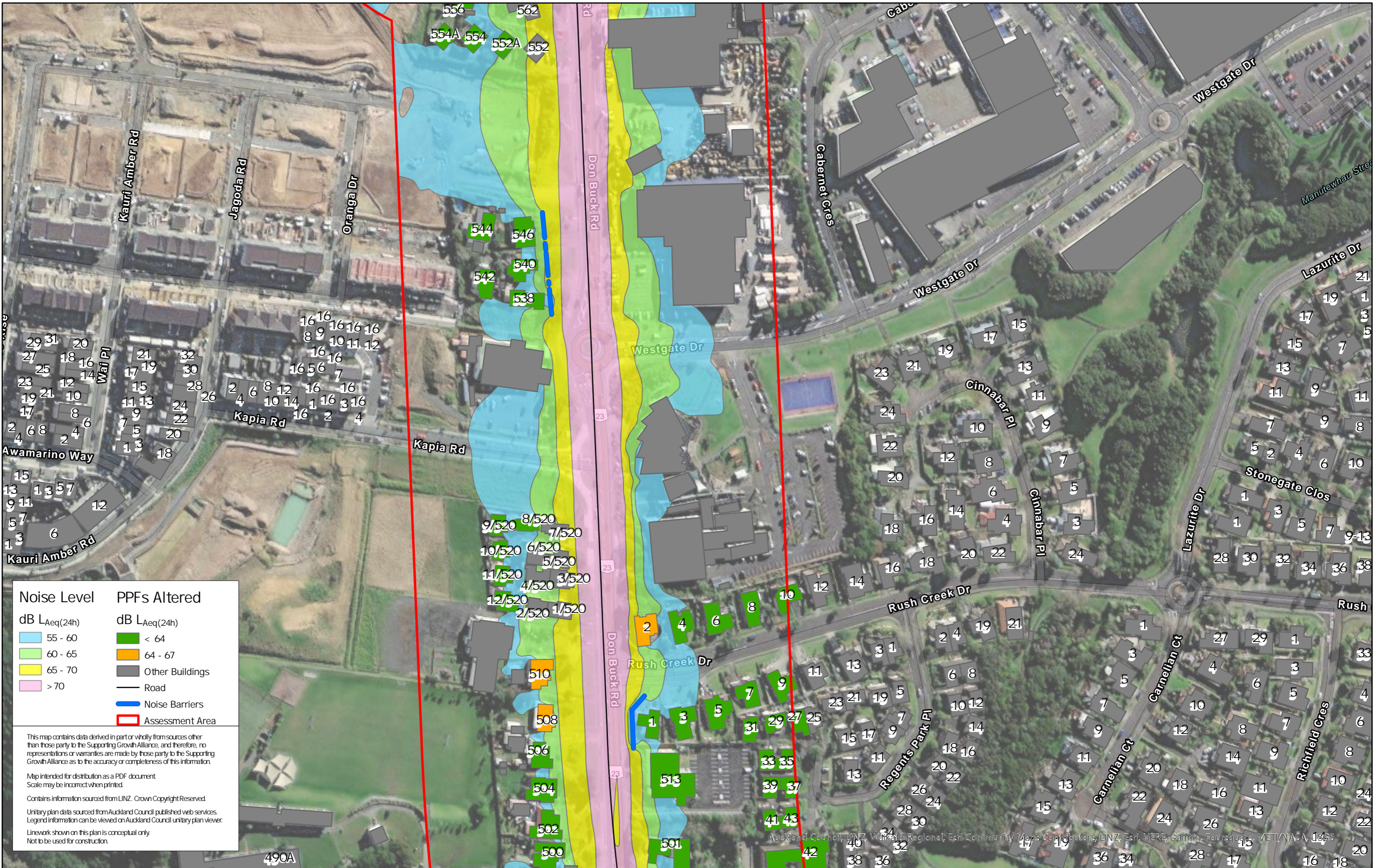
**Supporting Growth**  
**NoR R1 - Mitigation Option 2 Road Traffic Noise**

Client: Supporting Growth  
 Project: North West Package



Discipline: GIS  
 Drawing No:





Noise Level	PPFs Altered
55 - 60	< 64
60 - 65	64 - 67
65 - 70	Other Buildings
> 70	Road
	Noise Barriers
	Assessment Area

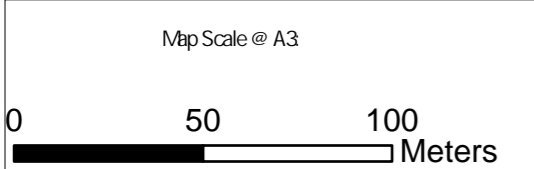
This map contains data derived in part or wholly from sources other than those party to the Supporting Growth Alliance, and therefore, no representations or warranties are made by those party to the Supporting Growth Alliance as to the accuracy or completeness of this information.

Map intended for distribution as a PDF document  
Scale may be incorrect when printed.

Contains information sourced from LINZ. Crown Copyright Reserved.

Unitary plan data sourced from Auckland Council published web services. Legend information can be viewed on Auckland Council unitary plan viewer.

Linework shown on this plan is conceptual only.  
Not to be used for construction.



Revision	Author	Verified	Approved	Date
1	DA	SJ	CD	22/11/22

Title: Supporting Growth  
NoR R1 - Mitigation Option 2 Road Traffic Noise

Client: Supporting Growth  
Project: North West Package



Discipline: GIS  
Drawing No:





Noise Level	PPFs Altered
55 - 60	< 64
60 - 65	64 - 67
65 - 70	Other Buildings
> 70	Road
	Noise Barriers
	Assessment Area

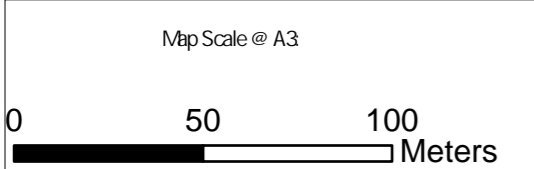
This map contains data derived in part or wholly from sources other than those party to the Supporting Growth Alliance, and therefore, no representations or warranties are made by those party to the Supporting Growth Alliance as to the accuracy or completeness of this information.

Map intended for distribution as a PDF document  
Scale may be incorrect when printed.

Contains information sourced from LINZ. Crown Copyright Reserved.

Unitary plan data sourced from Auckland Council published web services. Legend information can be viewed on Auckland Council unitary plan viewer.

Linework shown on this plan is conceptual only.  
Not to be used for construction.



Revision	Author	Verified	Approved	Date	Title
1	DA	SJ	CD	22/11/22	

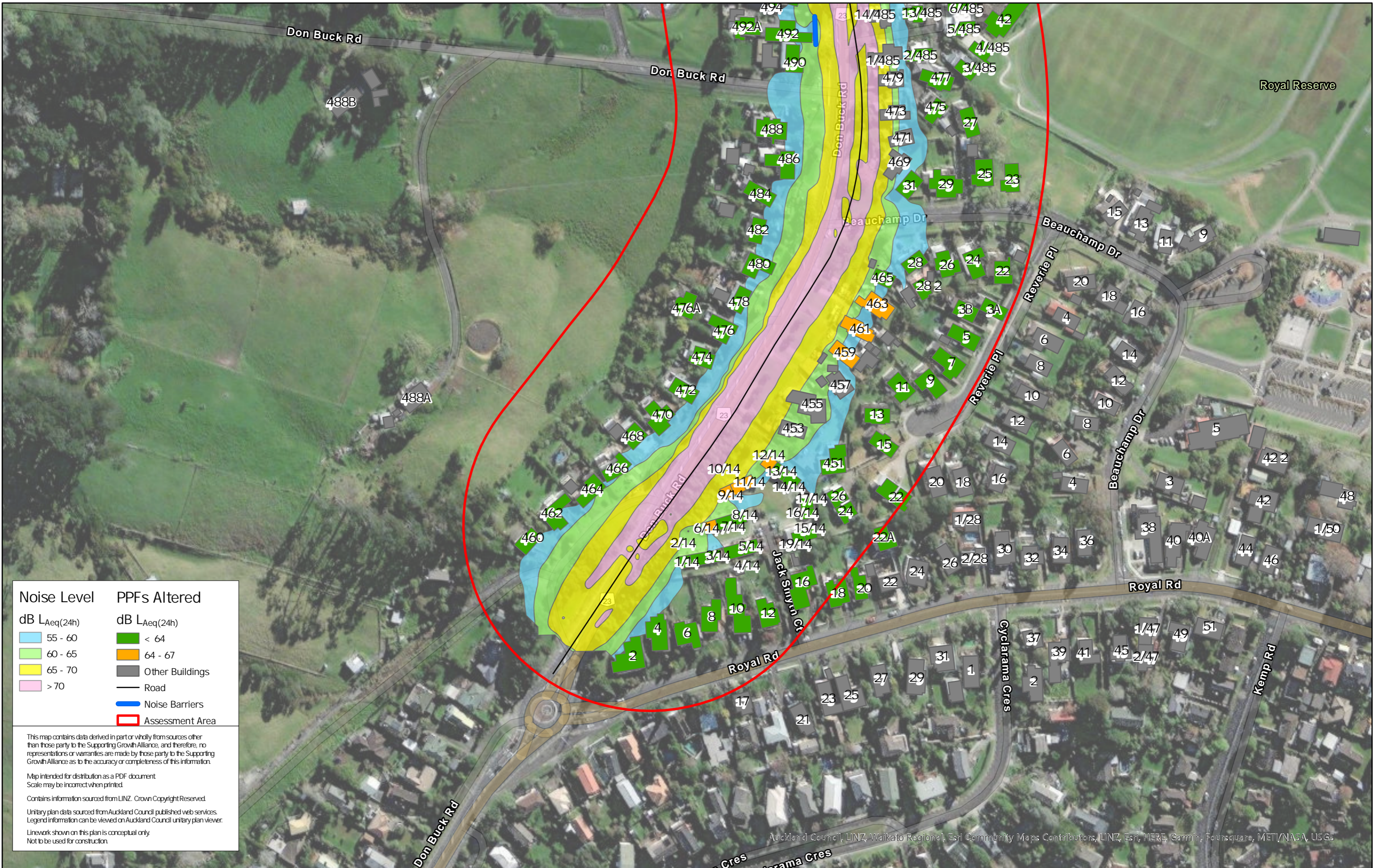
Supporting Growth  
NoR R1 - Mitigation Option 2 Road Traffic Noise

Client	Supporting Growth
Project	North West Package



Discipline:	GIS
Drawing No:	





Noise Level	PPFs Altered
dB $L_{Aeq}(24h)$	dB $L_{Aeq}(24h)$
55 - 60	< 64
60 - 65	64 - 67
65 - 70	Other Buildings
> 70	Road
	Noise Barriers
	Assessment Area

This map contains data derived in part or wholly from sources other than those party to the Supporting Growth Alliance, and therefore, no representations or warranties are made by those party to the Supporting Growth Alliance as to the accuracy or completeness of this information.

Map intended for distribution as a PDF document  
Scale may be incorrect when printed.

Contains information sourced from LINZ. Crown Copyright Reserved.

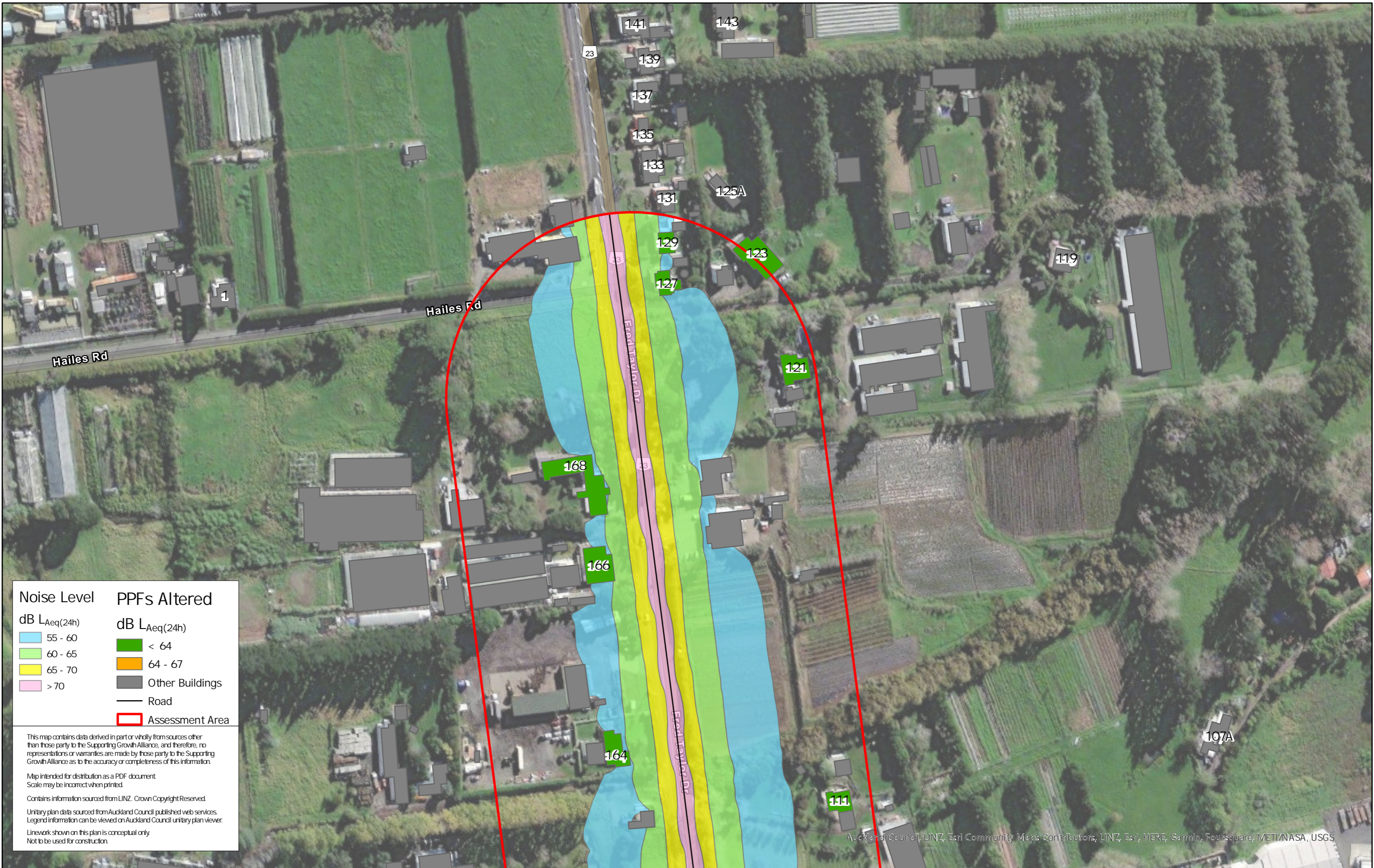
Unitary plan data sourced from Auckland Council published web services. Legend information can be viewed on Auckland Council unitary plan viewer.

Linework shown on this plan is conceptual only.  
Not to be used for construction.

Auckland Council, LINZ, Waikato Regional, Esri Community Maps Contributors, LINZ, Esri, HERE, Garmin, Foursquare, METI/NASA, USGS

Map Scale @ A3 0 50 100 Meters	Revision	Author	Verified	Approved	Date	Title: <b>Supporting Growth NoR R1 - Mitigation Option 2 Road Traffic Noise</b>	Client	Supporting Growth		Discipline:	GIS
	1	DA	SJ	CD	22/11/22		Project	North West Package		Drawing No:	





Noise Level	PPFs Altered
dB $L_{Aeq}(24h)$	dB $L_{Aeq}(24h)$
55 - 60	< 64
60 - 65	64 - 67
65 - 70	Other Buildings
> 70	Road
	Assessment Area

This map contains data derived in part or wholly from sources other than those party to the Supporting Growth Alliance, and therefore, no representations or warranties are made by those party to the Supporting Growth Alliance as to the accuracy or completeness of this information.

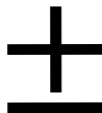
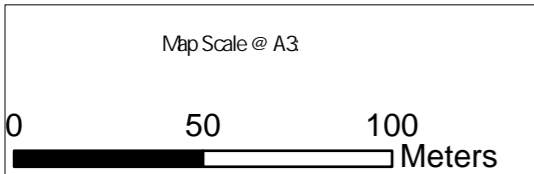
Map intended for distribution as a PDF document  
Scale may be incorrect when printed.

Contains information sourced from LINZ. Crown Copyright Reserved.

Unitary plan data sourced from Auckland Council published web services.  
Legend information can be viewed on Auckland Council unitary plan viewer.

Linework shown on this plan is conceptual only.  
Not to be used for construction.

Auckland Council, LINZ, Esri Community Maps Contributors, LINZ, Esri, HERE, Garmin, Foursquare, METI/NASA, USGS



Revision	Author	Verified	Approved	Date
1	DA	SJ	CD	22/11/22

Title: **Supporting Growth**  
**NoR R2 - Existing Road Traffic Noise**

Client: Supporting Growth

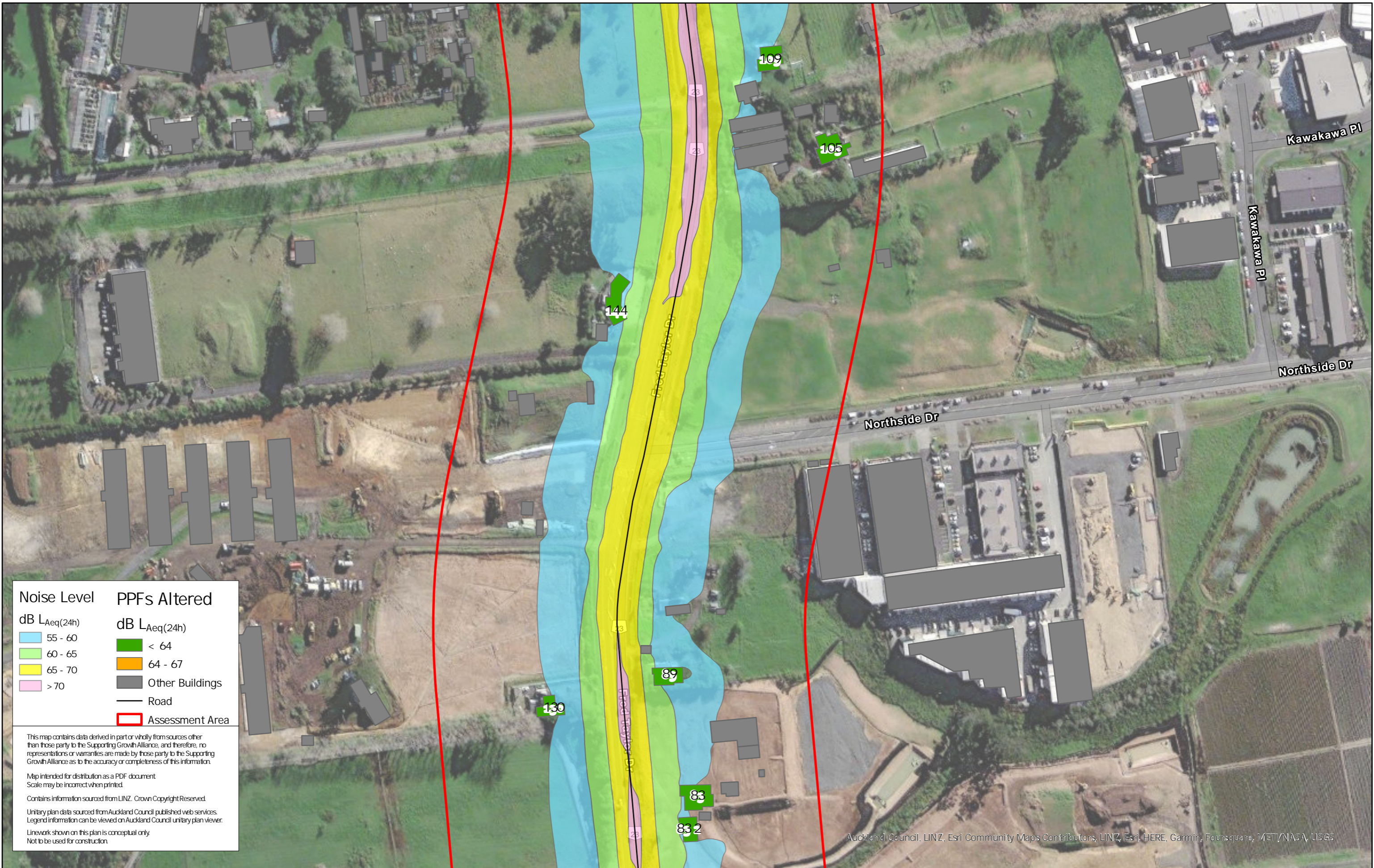
Project: North West Package



Discipline: GIS

Drawing No:





Noise Level	PPFs Altered
dB $L_{Aeq}(24h)$	dB $L_{Aeq}(24h)$
55 - 60	< 64
60 - 65	64 - 67
65 - 70	Other Buildings
> 70	Road
	Assessment Area

This map contains data derived in part or wholly from sources other than those party to the Supporting Growth Alliance, and therefore, no representations or warranties are made by those party to the Supporting Growth Alliance as to the accuracy or completeness of this information.

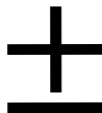
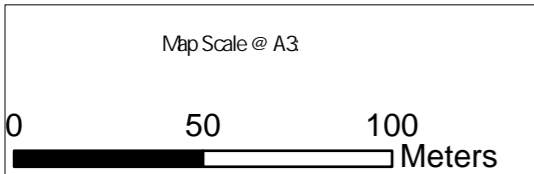
Map intended for distribution as a PDF document  
Scale may be incorrect when printed.

Contains information sourced from LINZ. Crown Copyright Reserved.

Unitary plan data sourced from Auckland Council published web services.  
Legend information can be viewed on Auckland Council unitary plan viewer.

Linework shown on this plan is conceptual only.  
Not to be used for construction.

Auckland Council, LINZ, Esri Community Maps Contributors, LINZ, Esri, HERE, Garmin, Foursquare, METI/NASA, USGS



Revision	Author	Verified	Approved	Date
1	DA	SJ	CD	22/11/22

Title: **Supporting Growth**  
**NoR R2 - Existing Road Traffic Noise**

Client: Supporting Growth

Project: North West Package



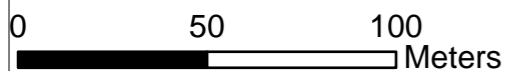
Discipline: GIS

Drawing No:





Map Scale @ A3



Revision	Author	Verified	Approved	Date
1	DA	SJ	CD	22/11/22

Title: **Supporting Growth  
NoR R2 - Existing Road Traffic Noise**

Client: Supporting Growth

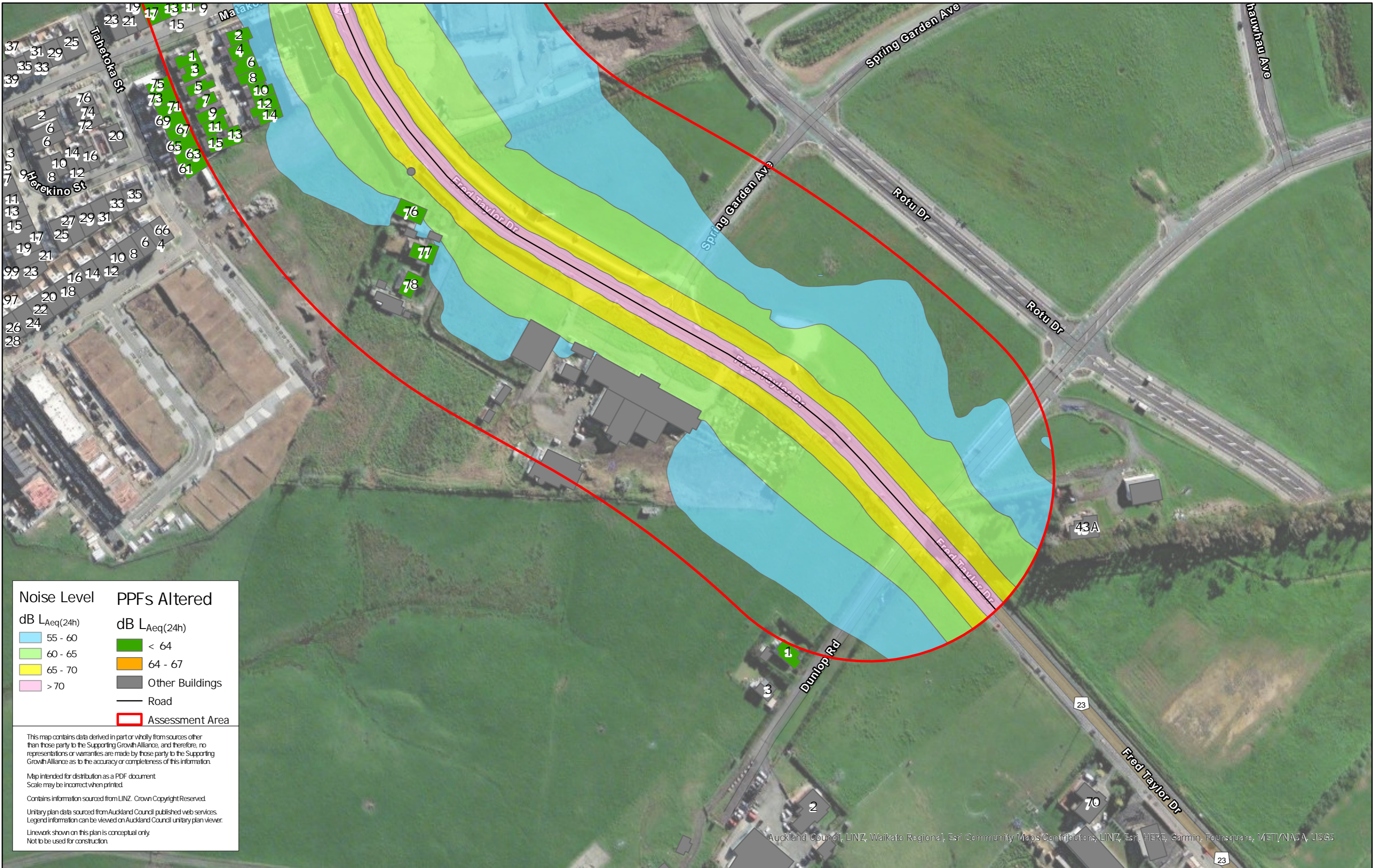
Project: North West Package



Discipline: GIS

Drawing No:





Noise Level	PPFs Altered
55 - 60	< 64
60 - 65	64 - 67
65 - 70	Other Buildings
> 70	Road
	Assessment Area

This map contains data derived in part or wholly from sources other than those party to the Supporting Growth Alliance, and therefore, no representations or warranties are made by those party to the Supporting Growth Alliance as to the accuracy or completeness of this information.

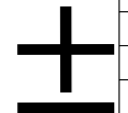
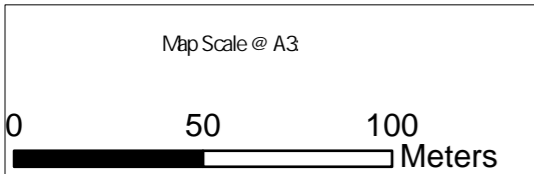
Map intended for distribution as a PDF document  
Scale may be incorrect when printed.

Contains information sourced from LINZ. Crown Copyright Reserved.

Unitary plan data sourced from Auckland Council published web services.  
Legend information can be viewed on Auckland Council unitary plan viewer.

Linework shown on this plan is conceptual only.  
Not to be used for construction.

Auckland Council, LINZ, Waikato Regional, Esri Community Maps Contributors, LINZ, Esri, HERE, Garmin, Foursquare, METI/NASA, USGS



Revision	Author	Verified	Approved	Date
1	DA	SJ	CD	22/11/22

Title: Supporting Growth  
NoR R2 - Existing Road Traffic Noise

Client: Supporting Growth  
Project: North West Package



Discipline: GIS  
Drawing No:





Noise Level	PPFs Altered
55 - 60	< 64
60 - 65	64 - 67
65 - 70	Other Buildings
> 70	Road
	Assessment Area

This map contains data derived in part or wholly from sources other than those party to the Supporting Growth Alliance, and therefore, no representations or warranties are made by those party to the Supporting Growth Alliance as to the accuracy or completeness of this information.

Map intended for distribution as a PDF document  
Scale may be incorrect when printed.

Contains information sourced from LINZ. Crown Copyright Reserved.

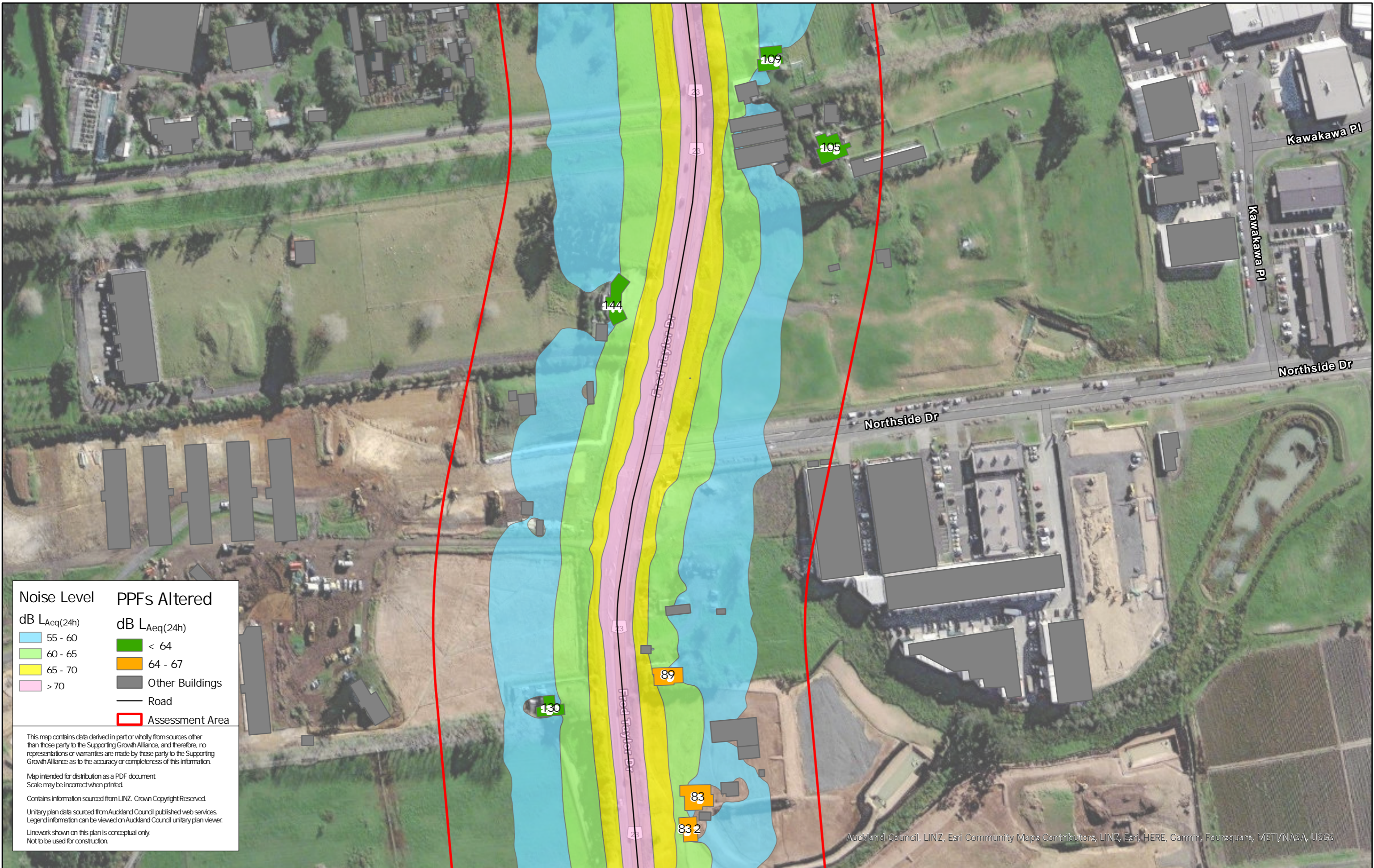
Unitary plan data sourced from Auckland Council published web services.  
Legend information can be viewed on Auckland Council unitary plan viewer.

Linework shown on this plan is conceptual only.  
Not to be used for construction.

Auckland Council, LINZ, Esri Community Maps Contributors, LINZ, Esri, HERE, Garmin, Foursquare, METI/NASA, USGS

Map Scale @ A3 0 50 100 Meters		Revision	Author	Verified	Approved	Date	Title: <b>Supporting Growth NoR R2 - Do Nothing Road Traffic Noise</b>	Client	Supporting Growth		Discipline:	GIS
		1	DA	SJ	CD	22/11/22		Project	North West Package		Drawing No:	





Noise Level	PPFs Altered
55 - 60	< 64
60 - 65	64 - 67
65 - 70	Other Buildings
> 70	Road
	Assessment Area

This map contains data derived in part or wholly from sources other than those party to the Supporting Growth Alliance, and therefore, no representations or warranties are made by those party to the Supporting Growth Alliance as to the accuracy or completeness of this information.

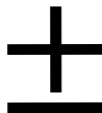
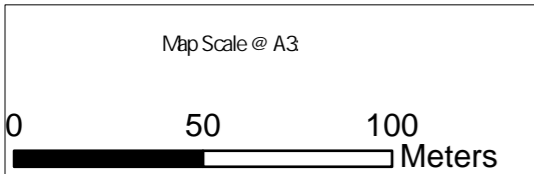
Map intended for distribution as a PDF document  
Scale may be incorrect when printed.

Contains information sourced from LINZ. Crown Copyright Reserved.

Unitary plan data sourced from Auckland Council published web services.  
Legend information can be viewed on Auckland Council unitary plan viewer.

Linework shown on this plan is conceptual only.  
Not to be used for construction.

Auckland Council, LINZ, Esri Community Maps Contributors, LINZ, Esri, HERE, Garmin, Foursquare, METI/NASA, USGS



Revision	Author	Verified	Approved	Date
1	DA	SJ	CD	22/11/22

Title: **Supporting Growth**  
**NoR R2 - Do Nothing Road Traffic Noise**

Client: Supporting Growth

Project: North West Package



Discipline: GIS

Drawing No:





Noise Level	PPFs Altered
55 - 60	< 64
60 - 65	64 - 67
65 - 70	Other Buildings
> 70	Road
	Assessment Area

This map contains data derived in part or wholly from sources other than those party to the Supporting Growth Alliance, and therefore, no representations or warranties are made by those party to the Supporting Growth Alliance as to the accuracy or completeness of this information.

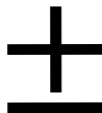
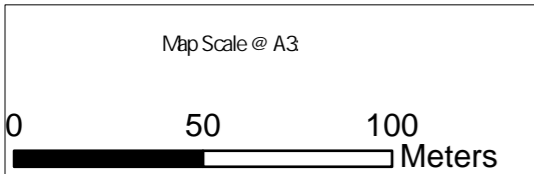
Map intended for distribution as a PDF document  
Scale may be incorrect when printed.

Contains information sourced from LINZ. Crown Copyright Reserved.

Unitary plan data sourced from Auckland Council published web services.  
Legend information can be viewed on Auckland Council unitary plan viewer.

Linework shown on this plan is conceptual only.  
Not to be used for construction.

Auckland Council, LINZ, Esri Community Maps Contributors, LINZ, Esri, HERE, Garmin, Foursquare, METI/NASA, USGS



Revision	Author	Verified	Approved	Date
1	DA	SJ	CD	22/11/22

Title: Supporting Growth  
NoR R2 - Do Nothing Road Traffic Noise

Client: Supporting Growth  
Project: North West Package



Discipline: GIS  
Drawing No:





Noise Level	PPFs Altered
dB $L_{Aeq}(24h)$	dB $L_{Aeq}(24h)$
55 - 60	< 64
60 - 65	64 - 67
65 - 70	Other Buildings
> 70	Road
	Assessment Area

This map contains data derived in part or wholly from sources other than those party to the Supporting Growth Alliance, and therefore, no representations or warranties are made by those party to the Supporting Growth Alliance as to the accuracy or completeness of this information.

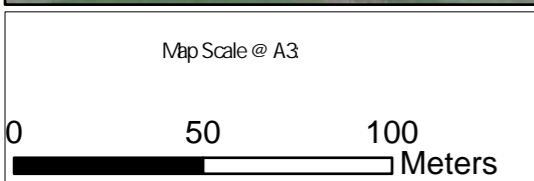
Map intended for distribution as a PDF document  
Scale may be incorrect when printed.

Contains information sourced from LINZ. Crown Copyright Reserved.

Unitary plan data sourced from Auckland Council published web services.  
Legend information can be viewed on Auckland Council unitary plan viewer.

Linework shown on this plan is conceptual only.  
Not to be used for construction.

Auckland Council, LINZ, Waikato Regional, Esri Community Maps Contributors, LINZ, Esri, HERE, Garmin, Foursquare, METI/NASA, USGS



Revision	Author	Verified	Approved	Date
1	DA	SJ	CD	22/11/22

Title: Supporting Growth  
NoR R2 - Do Nothing Road Traffic Noise

Client: Supporting Growth  
Project: North West Package



Discipline: GIS  
Drawing No: