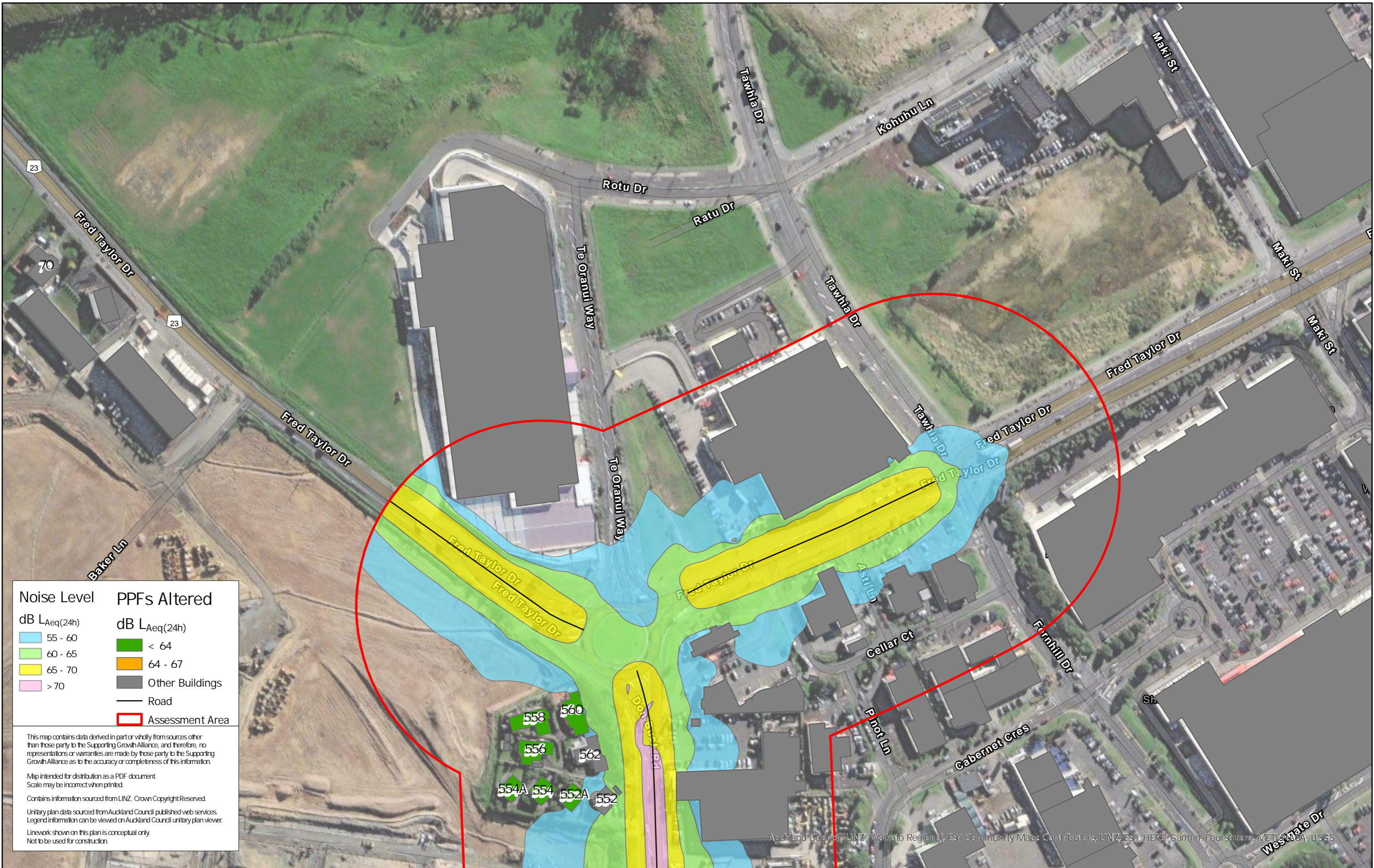


3 Appendix 3: Noise Contour Maps



| Noise Level | PPFs Altered |
|-------------------|-------------------|
| dB $L_{Aeq}(24h)$ | dB $L_{Aeq}(24h)$ |
| 55 - 60 | < 64 |
| 60 - 65 | 64 - 67 |
| 65 - 70 | Other Buildings |
| > 70 | Road |
| | Assessment Area |

This map contains data derived in part or wholly from sources other than those party to the Supporting Growth Alliance, and therefore, no representations or warranties are made by those party to the Supporting Growth Alliance as to the accuracy or completeness of this information.

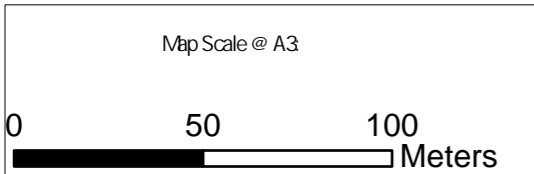
Map intended for distribution as a PDF document
Scale may be incorrect when printed.

Contains information sourced from LINZ. Crown Copyright Reserved.

Unitary plan data sourced from Auckland Council published web services. Legend information can be viewed on Auckland Council unitary plan viewer.

Linework shown on this plan is conceptual only.
Not to be used for construction.

Auckland Council, LINZ, Waikato Regional, Esri Community Maps Contributors, LINZ, Esri, HERE, Garmin, Foursquare, METI/ANSA, USGS



| Revision | Author | Verified | Approved | Date |
|----------|--------|----------|----------|----------|
| 1 | DA | SJ | CD | 22/11/22 |

Title: Supporting Growth
NoR R1 - Existing Road Traffic Noise

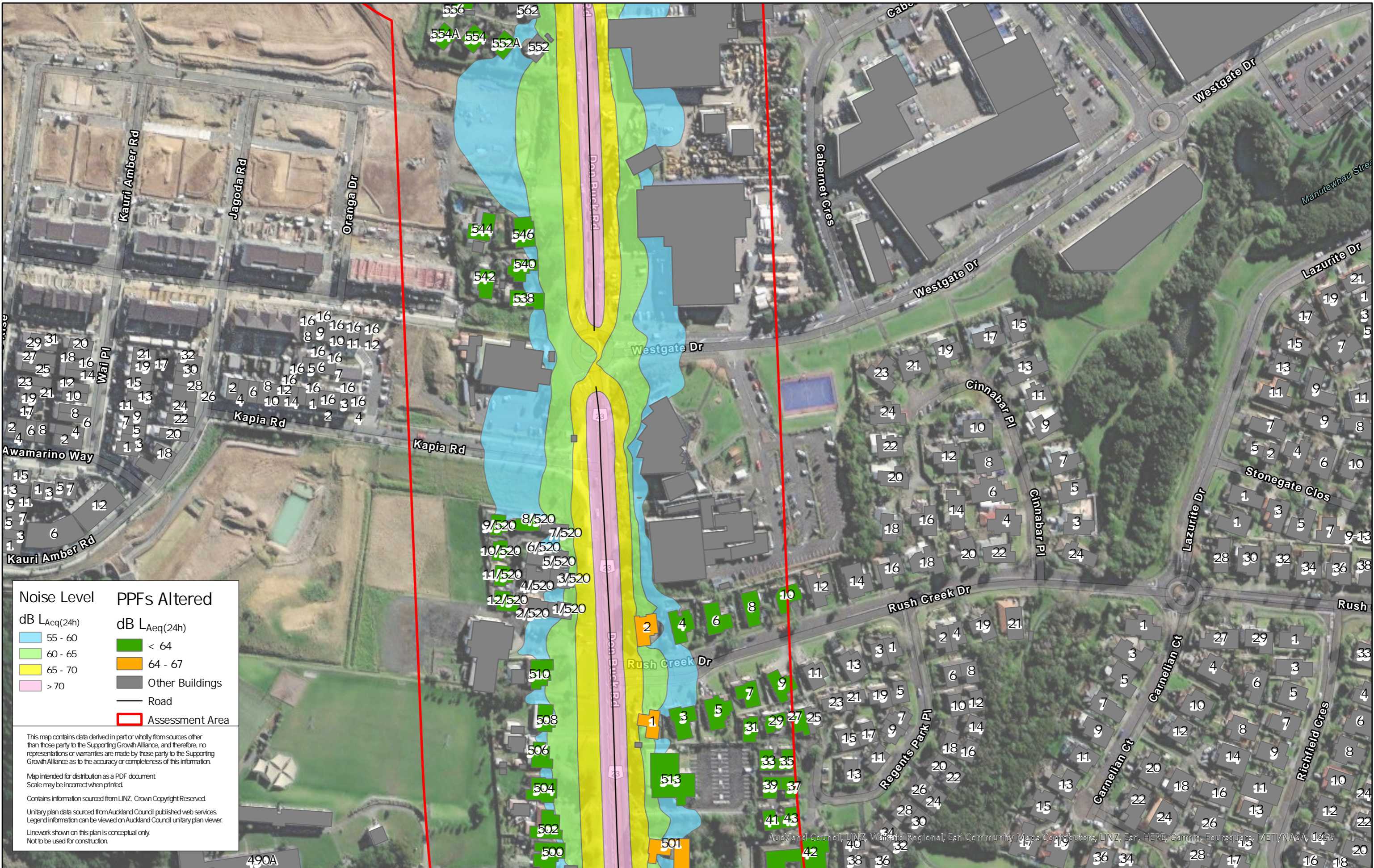
Client: Supporting Growth

Project: North West Package



Discipline: GIS

Drawing No:



| Noise Level | PPFs Altered |
|-------------|-----------------|
| 55 - 60 | < 64 |
| 60 - 65 | 64 - 67 |
| 65 - 70 | Other Buildings |
| > 70 | Road |
| | Assessment Area |

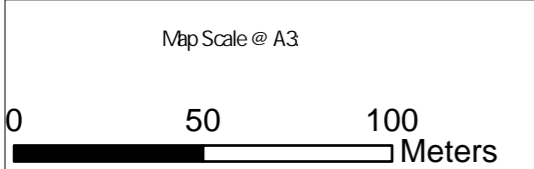
This map contains data derived in part or wholly from sources other than those party to the Supporting Growth Alliance, and therefore, no representations or warranties are made by those party to the Supporting Growth Alliance as to the accuracy or completeness of this information.

Map intended for distribution as a PDF document
Scale may be incorrect when printed.

Contains information sourced from LINZ. Crown Copyright Reserved.

Unitary plan data sourced from Auckland Council published web services. Legend information can be viewed on Auckland Council unitary plan viewer.

Linework shown on this plan is conceptual only.
Not to be used for construction.



| Revision | Author | Verified | Approved | Date |
|----------|--------|----------|----------|----------|
| 1 | DA | SJ | CD | 22/11/22 |

Title: Supporting Growth
NoR R1 - Existing Road Traffic Noise

Client: Supporting Growth
Project: North West Package



Discipline: GIS
Drawing No:



| Noise Level | PPFs Altered |
|-------------|-----------------|
| 55 - 60 | < 64 |
| 60 - 65 | 64 - 67 |
| 65 - 70 | Other Buildings |
| > 70 | Road |
| | Assessment Area |

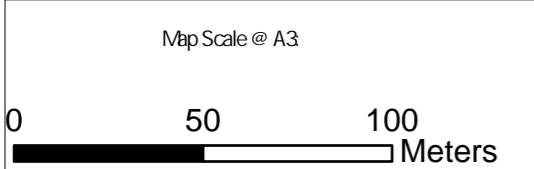
This map contains data derived in part or wholly from sources other than those party to the Supporting Growth Alliance, and therefore, no representations or warranties are made by those party to the Supporting Growth Alliance as to the accuracy or completeness of this information.

Map intended for distribution as a PDF document
Scale may be incorrect when printed.

Contains information sourced from LINZ. Crown Copyright Reserved.

Unitary plan data sourced from Auckland Council published web services. Legend information can be viewed on Auckland Council unitary plan viewer.

Linework shown on this plan is conceptual only.
Not to be used for construction.



| Revision | Author | Verified | Approved | Date | Title |
|----------|--------|----------|----------|----------|-------|
| 1 | DA | SJ | CD | 22/11/22 | |

Supporting Growth
NoR R1 - Existing Road Traffic Noise

Client: Supporting Growth
Project: North West Package



Discipline: GIS
Drawing No:



| Noise Level | PPFs Altered |
|-------------------|-------------------|
| dB $L_{Aeq}(24h)$ | dB $L_{Aeq}(24h)$ |
| 55 - 60 | < 64 |
| 60 - 65 | 64 - 67 |
| 65 - 70 | Other Buildings |
| > 70 | Road |
| | Assessment Area |

This map contains data derived in part or wholly from sources other than those party to the Supporting Growth Alliance, and therefore, no representations or warranties are made by those party to the Supporting Growth Alliance as to the accuracy or completeness of this information.

Map intended for distribution as a PDF document
Scale may be incorrect when printed.

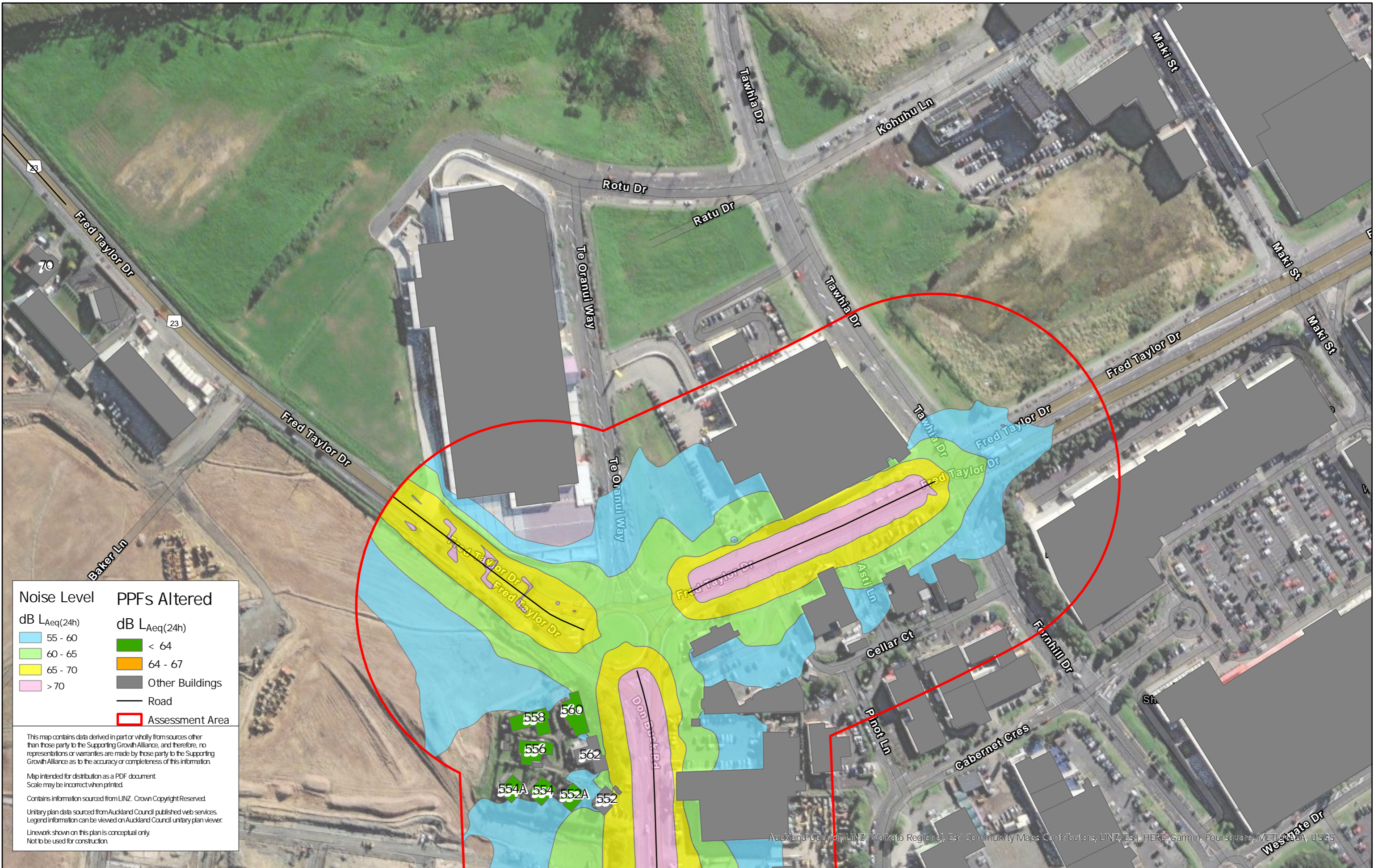
Contains information sourced from LINZ. Crown Copyright Reserved.

Unitary plan data sourced from Auckland Council published web services. Legend information can be viewed on Auckland Council unitary plan viewer.

Linework shown on this plan is conceptual only.
Not to be used for construction.

Auckland Council, LINZ, Waikato Regional, Esri Community Maps Contributors, LINZ, Esri, HERE, Garmin, Foursquare, METI/NASA, USGS

| | | | | | | | | | | | |
|-----------------------------------|----------|--------|----------|----------|----------|---|---------|--------------------|--|-------------|-----|
| Map Scale @ A3 0 50 100 Meters | Revision | Author | Verified | Approved | Date | Title: Supporting Growth NoR R1 - Existing Road Traffic Noise | Client | Supporting Growth | | Discipline: | GIS |
| | 1 | DA | SJ | CD | 22/11/22 | | Project | North West Package | | Drawing No: | |



| Noise Level | PPFs Altered |
|-------------|---|
| 55 - 60 | $L_{Aeq(24h)}$ <math>< 64</math> |
| 60 - 65 | 64 - 67 |
| 65 - 70 | Other Buildings |
| > 70 | Road |
| | Assessment Area |

This map contains data derived in part or wholly from sources other than those party to the Supporting Growth Alliance, and therefore, no representations or warranties are made by those party to the Supporting Growth Alliance as to the accuracy or completeness of this information.

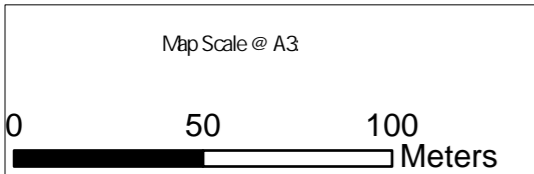
Map intended for distribution as a PDF document
Scale may be incorrect when printed.

Contains information sourced from LINZ. Crown Copyright Reserved.

Unitary plan data sourced from Auckland Council published web services. Legend information can be viewed on Auckland Council unitary plan viewer.

Linework shown on this plan is conceptual only.
Not to be used for construction.

Auckland Council, LINZ, Waikato Regional, Esri Community Maps Contributors, LINZ, Esri, HERE, Garmin, Foursquare, METI/ANSA, USGS



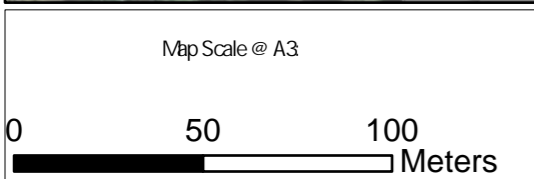
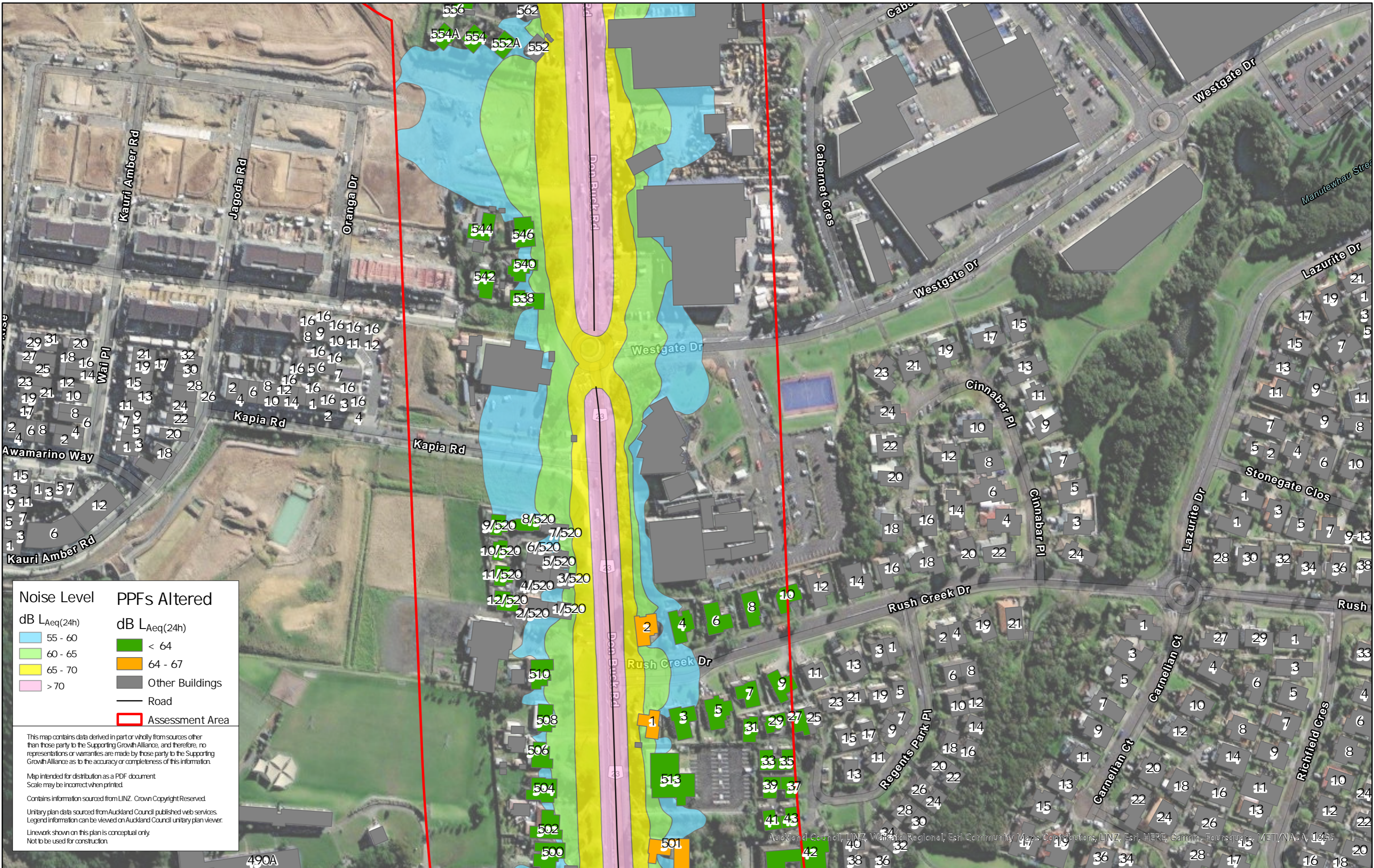
| Revision | Author | Verified | Approved | Date |
|----------|--------|----------|----------|----------|
| 1 | DA | SJ | CD | 22/11/22 |

Title: Supporting Growth
NoR R1 - Do Nothing Road Traffic Noise

Client: Supporting Growth
Project: North West Package



Discipline: GIS
Drawing No:



| Revision | Author | Verified | Approved | Date | Title |
|----------|--------|----------|----------|----------|---|
| 1 | DA | SJ | CD | 22/11/22 | Supporting Growth NoR R1 - Do Nothing Road Traffic Noise |

Client: Supporting Growth

Project: North West Package

Discipline: GIS

Drawing No:



Auckland Council, LINZ, Waikato Regional, Esri, Community Maps Contributors, LINZ, Esri, HERE, Garmin, Foursquare, METI/NASA, IGN



| Noise Level | PPFs Altered |
|-------------|-----------------|
| 55 - 60 | < 64 |
| 60 - 65 | 64 - 67 |
| 65 - 70 | Other Buildings |
| > 70 | Road |
| | Assessment Area |

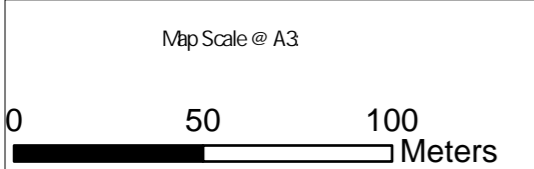
This map contains data derived in part or wholly from sources other than those party to the Supporting Growth Alliance, and therefore, no representations or warranties are made by those party to the Supporting Growth Alliance as to the accuracy or completeness of this information.

Map intended for distribution as a PDF document
Scale may be incorrect when printed.

Contains information sourced from LINZ. Crown Copyright Reserved.

Unitary plan data sourced from Auckland Council published web services. Legend information can be viewed on Auckland Council unitary plan viewer.

Linework shown on this plan is conceptual only.
Not to be used for construction.



| Revision | Author | Verified | Approved | Date | Title |
|----------|--------|----------|----------|----------|-------|
| 1 | DA | SJ | CD | 22/11/22 | |

Supporting Growth
NoR R1 - Do Nothing Road Traffic Noise

| | |
|---------|--------------------|
| Client | Supporting Growth |
| Project | North West Package |



| | |
|-------------|-----|
| Discipline: | GIS |
| Drawing No: | |



| Noise Level | PPFs Altered |
|--------------|-----------------|
| dB LAeq(24h) | dB LAeq(24h) |
| 55 - 60 | < 64 |
| 60 - 65 | 64 - 67 |
| 65 - 70 | Other Buildings |
| > 70 | Road |
| | Assessment Area |

This map contains data derived in part or wholly from sources other than those party to the Supporting Growth Alliance, and therefore, no representations or warranties are made by those party to the Supporting Growth Alliance as to the accuracy or completeness of this information.

Map intended for distribution as a PDF document
Scale may be incorrect when printed.

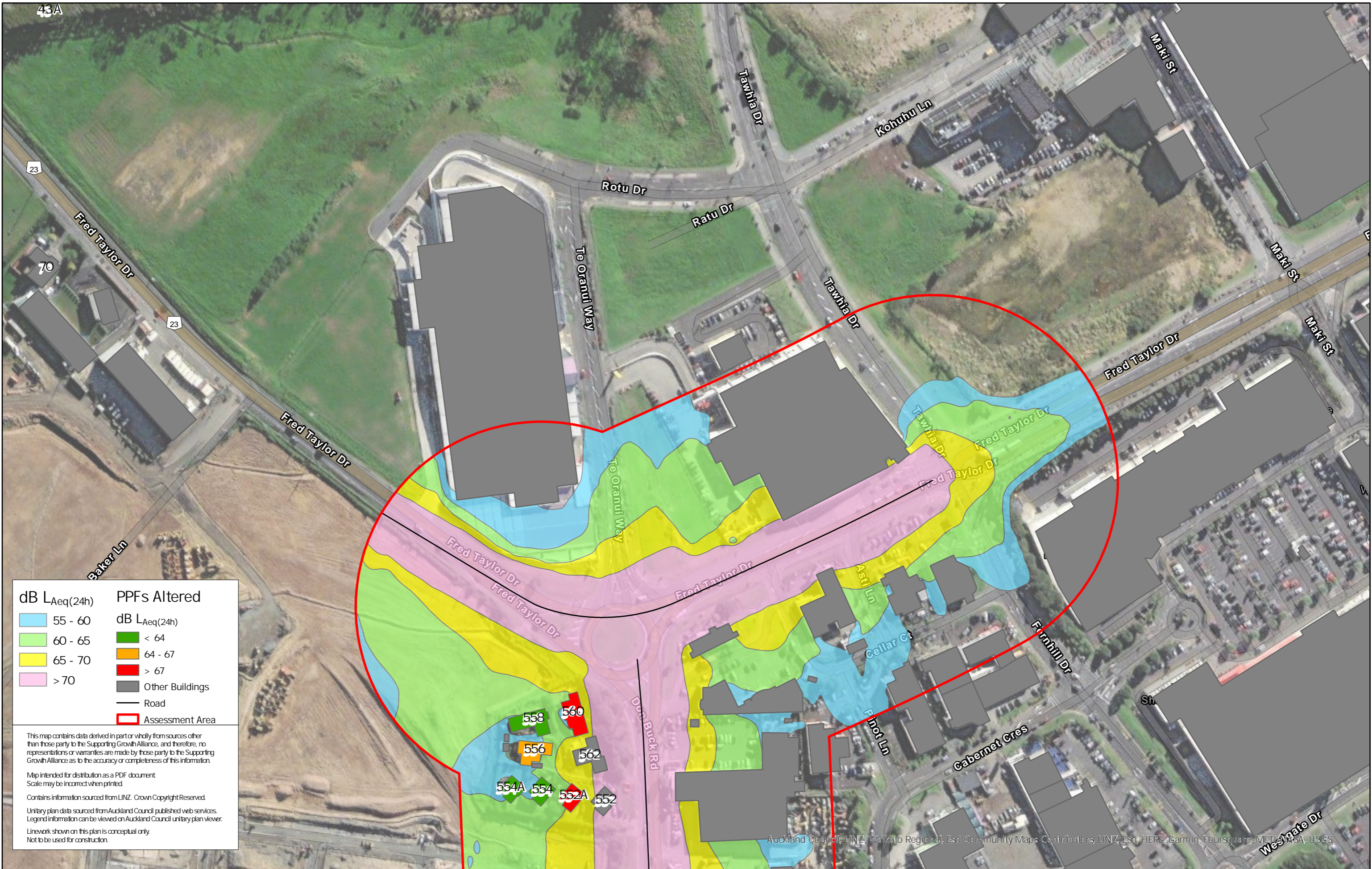
Contains information sourced from LINZ. Crown Copyright Reserved.

Unitary plan data sourced from Auckland Council published web services. Legend information can be viewed on Auckland Council unitary plan viewer.

Linework shown on this plan is conceptual only.
Not to be used for construction.

Auckland Council, LINZ, Waikato Regional, Esri Community Maps Contributors, LINZ, Esri, HERE, Garmin, Foursquare, METI/NASA, USGS

| | | | | | | | | | | | |
|-----------------------------------|----------|--------|----------|----------|----------|---|---------|--------------------|--|-------------|-----|
| Map Scale @ A3 0 50 100 Meters | Revision | Author | Verified | Approved | Date | Title: Supporting Growth NoR R1 - Do Nothing Road Traffic Noise | Client | Supporting Growth | | Discipline: | GIS |
| | 1 | DA | SJ | CD | 22/11/22 | | Project | North West Package | | Drawing No: | |



| dB LAeq(24h) | | PPFs Altered | |
|--------------|---------|--------------|-----------------|
| Light Blue | 55 - 60 | Green | < 64 |
| Green | 60 - 65 | Orange | 64 - 67 |
| Yellow | 65 - 70 | Red | > 67 |
| Pink | > 70 | Grey | Other Buildings |
| Black line | Road | Red outline | Assessment Area |

This map contains data derived in part or wholly from sources other than those party to the Supporting Growth Alliance, and therefore, no representations or warranties are made by those party to the Supporting Growth Alliance as to the accuracy or completeness of this information.

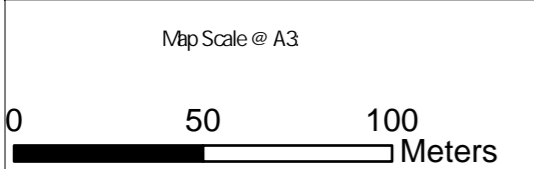
Map intended for distribution as a PDF document
Scale may be incorrect when printed.

Contains information sourced from LINZ. Crown Copyright Reserved.

Unitary plan data sourced from Auckland Council published web services.
Legend information can be viewed on Auckland Council unitary plan viewer.

Linework shown on this plan is conceptual only.
Not to be used for construction.

Auckland Council, LINZ, Waikato Regional, Esri Community Maps Contributors, LINZ, Esri, HERE, Garmin, Foursquare, METI, NASA, USGS



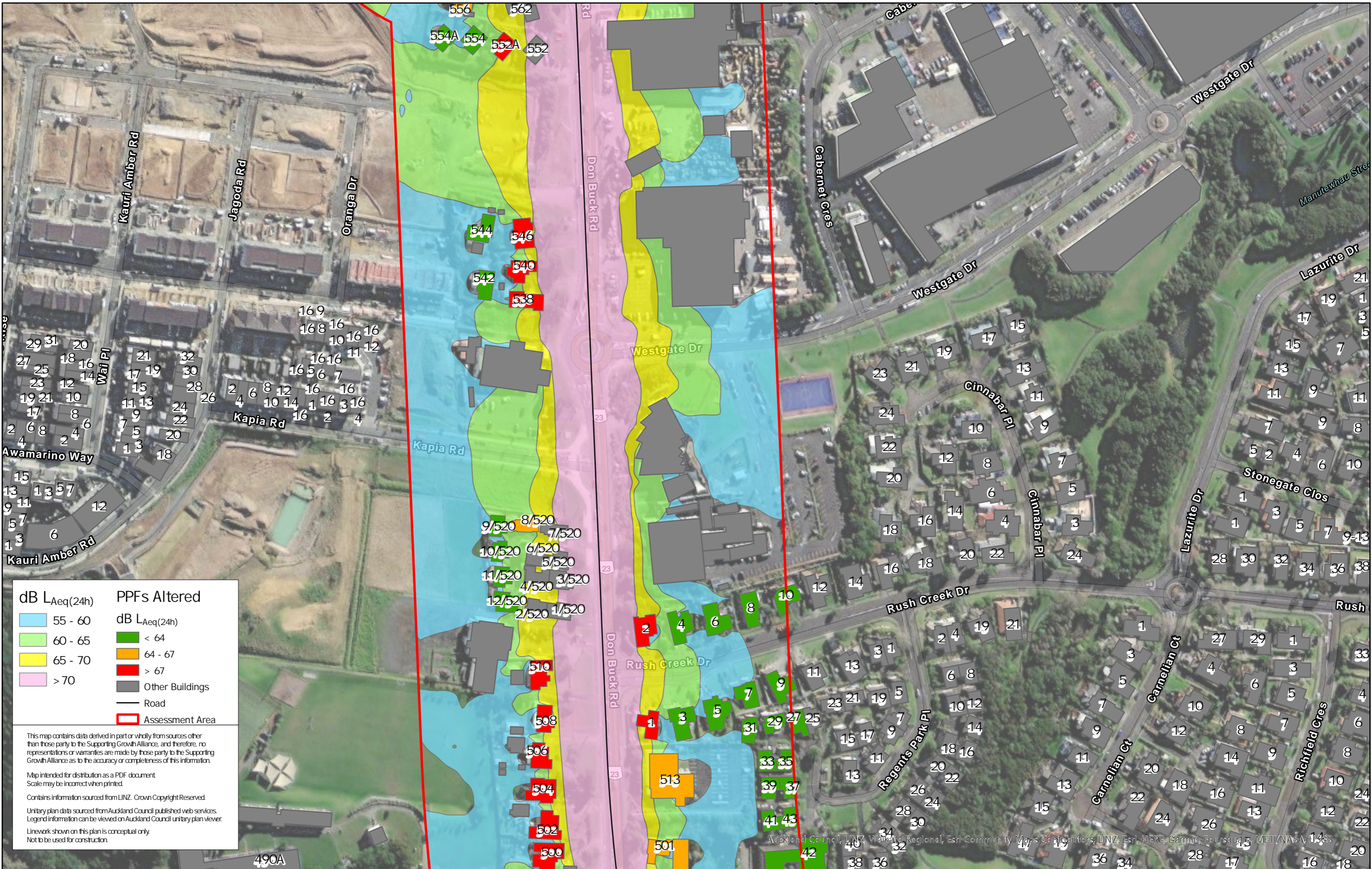
| Revision | Author | Verified | Approved | Date | Title |
|----------|--------|----------|----------|----------|-------|
| 1 | DA | SJ | CD | 22/11/22 | |

Supporting Growth
NoR R1 - Do Minimum Road Traffic Noise

Client: Supporting Growth
 Project: North West Package



Discipline: GIS
 Drawing No:



dB LAeq(24h)

- 55 - 60
- 60 - 65
- 65 - 70
- > 70

PPFs Altered

- < 64
- 64 - 67
- > 67
- Other Buildings
- Road
- Assessment Area

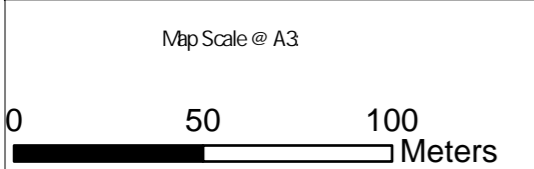
This map contains data derived in part or wholly from sources other than those party to the Supporting Growth Alliance, and therefore, no representations or warranties are made by those party to the Supporting Growth Alliance as to the accuracy or completeness of this information.

Map intended for distribution as a PDF document
Scale may be incorrect when printed.

Contains information sourced from LINZ. Crown Copyright Reserved.

Unitary plan data sourced from Auckland Council published web services.
Legend information can be viewed on Auckland Council unitary plan viewer.

Linework shown on this plan is conceptual only.
Not to be used for construction.



| Revision | Author | Verified | Approved | Date | Title |
|----------|--------|----------|----------|----------|-------|
| 1 | DA | SJ | CD | 22/11/22 | |

Supporting Growth
NoR R1 - Do Minimum Road Traffic Noise

Client: Supporting Growth

Project: North West Package



Discipline: GIS

Drawing No:



| dB LAeq(24h) | | PPFs Altered | |
|---|---|--|---|
| 55 - 60 | 60 - 65 | < 64 | 64 - 67 |
| 65 - 70 | > 70 | > 67 | Other Buildings |
| | | Road | Assessment Area |

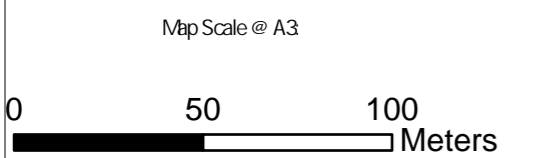
This map contains data derived in part or wholly from sources other than those party to the Supporting Growth Alliance, and therefore, no representations or warranties are made by those party to the Supporting Growth Alliance as to the accuracy or completeness of this information.

Map intended for distribution as a PDF document
Scale may be incorrect when printed.

Contains information sourced from LINZ. Crown Copyright Reserved.

Unitary plan data sourced from Auckland Council published web services. Legend information can be viewed on Auckland Council unitary plan viewer.

Linework shown on this plan is conceptual only.
Not to be used for construction.



| Revision | Author | Verified | Approved | Date | Title |
|----------|--------|----------|----------|----------|-------|
| 1 | DA | SJ | CD | 22/11/22 | |

Supporting Growth
NoR R1 - Do Minimum Road Traffic Noise

| | |
|---------|--------------------|
| Client | Supporting Growth |
| Project | North West Package |



| | |
|-------------|-----|
| Discipline: | GIS |
| Drawing No: | |



| dB LAeq(24h) | | PPFs Altered | |
|---|---|---|---|
| 55 - 60 | < 64 | 64 - 67 | Other Buildings |
| 60 - 65 | 64 - 67 | > 67 | Road |
| 65 - 70 | > 67 | | Assessment Area |
| > 70 | | | |

This map contains data derived in part or wholly from sources other than those party to the Supporting Growth Alliance, and therefore, no representations or warranties are made by those party to the Supporting Growth Alliance as to the accuracy or completeness of this information.

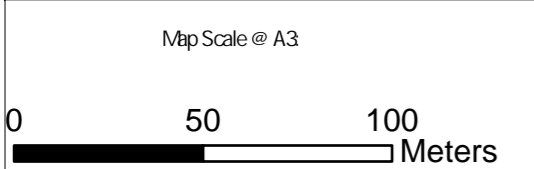
Map intended for distribution as a PDF document.
Scale may be incorrect when printed.

Contains information sourced from LINZ. Crown Copyright Reserved.

Unitary plan data sourced from Auckland Council published web services. Legend information can be viewed on Auckland Council unitary plan viewer.

Linework shown on this plan is conceptual only.
Not to be used for construction.

Auckland Council, LINZ, Waikato Regional, Esri Community Maps Contributors, LINZ, Esri, HERE, Garmin, Pousquare, METI/NASA, USGS



| Revision | Author | Verified | Approved | Date |
|----------|--------|----------|----------|----------|
| 1 | DA | SJ | CD | 22/11/22 |

Title: Supporting Growth
NoR R1 - Do Minimum Road Traffic Noise

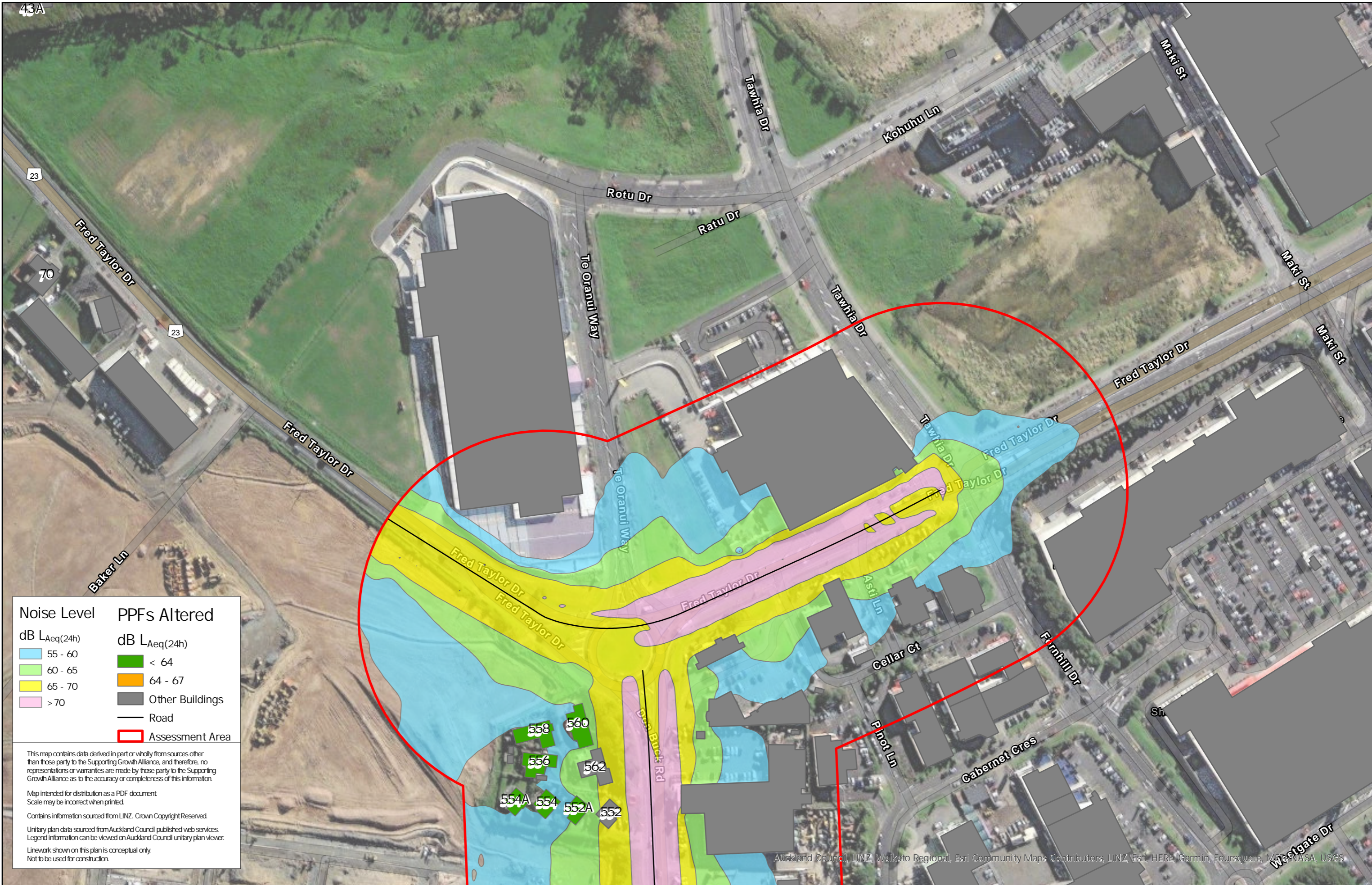
Client: Supporting Growth

Project: North West Package



Discipline: GIS

Drawing No:



| Noise Level | PPFs Altered |
|-------------|-----------------|
| 55 - 60 | < 64 |
| 60 - 65 | 64 - 67 |
| 65 - 70 | Other Buildings |
| > 70 | Road |
| | Assessment Area |

This map contains data derived in part or wholly from sources other than those party to the Supporting Growth Alliance, and therefore, no representations or warranties are made by those party to the Supporting Growth Alliance as to the accuracy or completeness of this information.

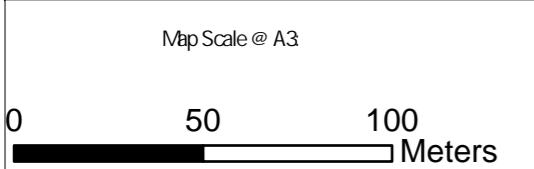
Map intended for distribution as a PDF document
Scale may be incorrect when printed.

Contains information sourced from LINZ. Crown Copyright Reserved.

Unitary plan data sourced from Auckland Council published web services.
Legend information can be viewed on Auckland Council unitary plan viewer.

Linework shown on this plan is conceptual only.
Not to be used for construction.

Auckland Council, LINZ, Waikato Regional, Esri Community Maps Contributors, LINZ, Esri, HERE, Garmin, Foursquare, Mapbox, Mapbox Data, Mapbox, OpenStreetMap contributors, Swatch, USDA, USGS



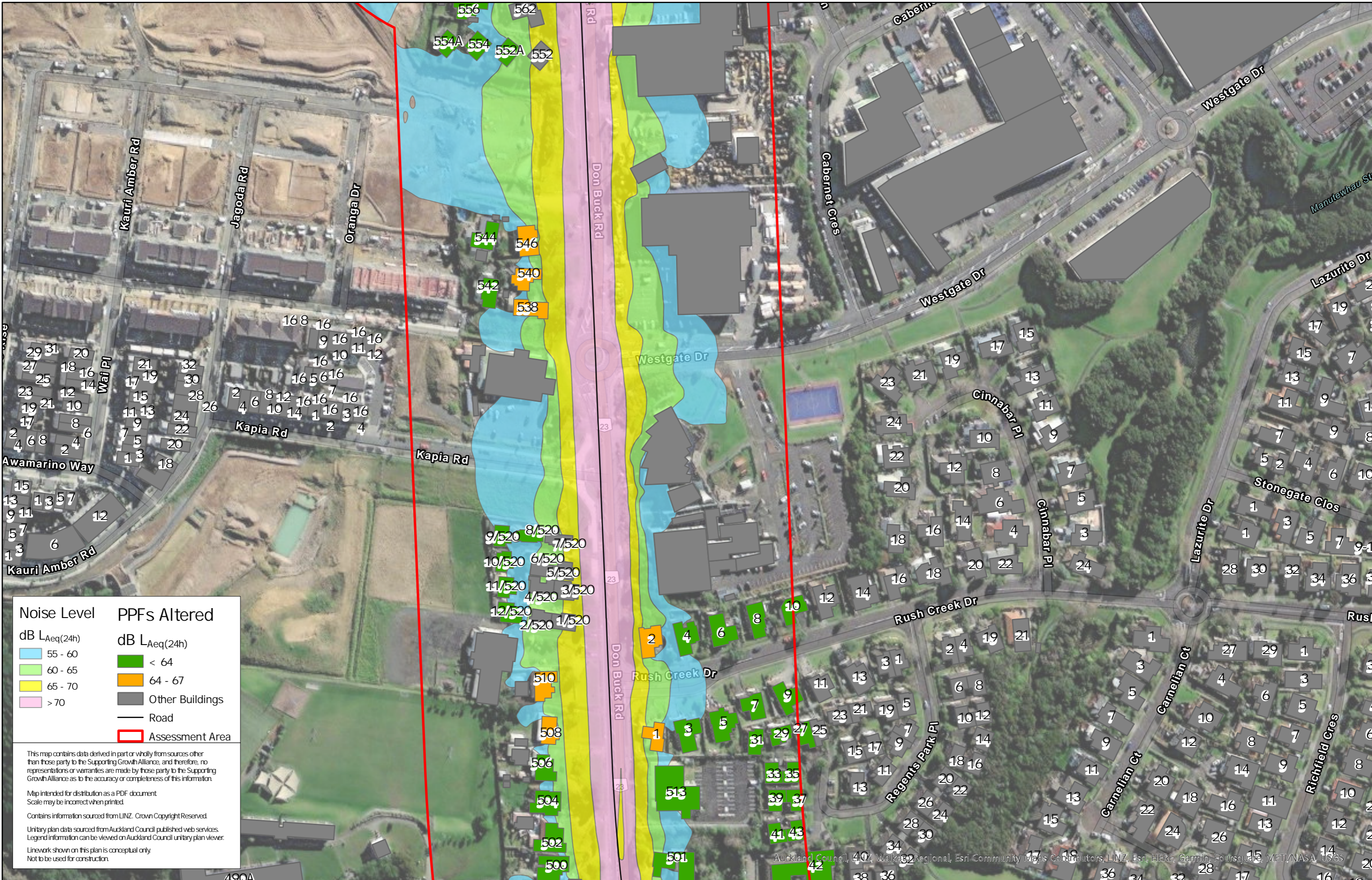
| Revision | Author | Verified | Approved | Date |
|----------|--------|----------|----------|----------|
| 1 | DA | SJ | CD | 22/11/22 |

Title: Supporting Growth
NoR R1 - Mitigation Option 1 Road Traffic Noise

Client: Supporting Growth
Project: North West Package



Discipline: GIS
Drawing No:



Noise Level
dB L_{Aeq}(24h)

- 55 - 60
- 60 - 65
- 65 - 70
- > 70

PPFs Altered
dB L_{Aeq}(24h)

- < 64
- 64 - 67

■ Other Buildings
— Road
 Assessment Area

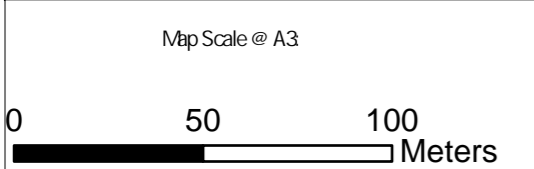
This map contains data derived in part or wholly from sources other than those party to the Supporting Growth Alliance, and therefore, no representations or warranties are made by those party to the Supporting Growth Alliance as to the accuracy or completeness of this information.

Map intended for distribution as a PDF document
Scale may be incorrect when printed.

Contains information sourced from LINZ. Crown Copyright Reserved.

Unitary plan data sourced from Auckland Council published web services.
Legend information can be viewed on Auckland Council unitary plan viewer.

Linework shown on this plan is conceptual only.
Not to be used for construction.



| Revision | Author | Verified | Approved | Date |
|----------|--------|----------|----------|----------|
| 1 | DA | SJ | CD | 22/11/22 |

Title:
Supporting Growth
NoR R1 - Mitigation Option 1 Road Traffic Noise

Client: Supporting Growth
Project: North West Package



Discipline: GIS
Drawing No:

Auckland Council, LINZ, Waikato Regional, Esri Community Maps Contributors, LINZ, Esri, HERE, Garmin, Foursquare, MET, NASA, USGS



Noise Level
dB LAeq(24h)

- 55 - 60
- 60 - 65
- 65 - 70
- > 70

PPFs Altered
dB LAeq(24h)

- < 64
- 64 - 67

■ Other Buildings
— Road
 Assessment Area

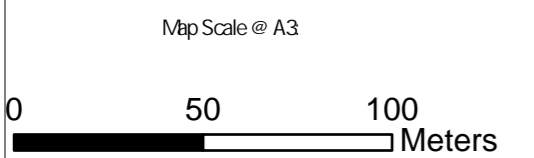
This map contains data derived in part or wholly from sources other than those party to the Supporting Growth Alliance, and therefore, no representations or warranties are made by those party to the Supporting Growth Alliance as to the accuracy or completeness of this information.

Map intended for distribution as a PDF document
Scale may be incorrect when printed.

Contains information sourced from LINZ. Crown Copyright Reserved.

Unitary plan data sourced from Auckland Council published web services. Legend information can be viewed on Auckland Council unitary plan viewer.

Linework shown on this plan is conceptual only.
Not to be used for construction.



| Revision | Author | Verified | Approved | Date | Title |
|----------|--------|----------|----------|----------|-------|
| 1 | DA | SJ | CD | 22/11/22 | |

Supporting Growth
NoR R1 - Mitigation Option 1 Road Traffic Noise

| | |
|---------|--------------------|
| Client | Supporting Growth |
| Project | North West Package |



| | |
|-------------|-----|
| Discipline: | GIS |
| Drawing No: | |

Auckland Council, LINZ, Waikato Regional Council, Esri Community Maps Contributors, LINZ, Esri, HERE, Garmin, Foursquare, METI/NASA, USGS



| Noise Level | PPFs Altered |
|-------------------|-------------------|
| dB $L_{Aeq}(24h)$ | dB $L_{Aeq}(24h)$ |
| 55 - 60 | < 64 |
| 60 - 65 | 64 - 67 |
| 65 - 70 | Other Buildings |
| > 70 | Road |
| | Assessment Area |

This map contains data derived in part or wholly from sources other than those party to the Supporting Growth Alliance, and therefore, no representations or warranties are made by those party to the Supporting Growth Alliance as to the accuracy or completeness of this information.

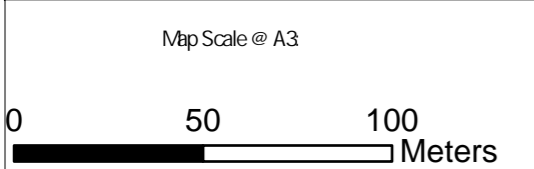
Map intended for distribution as a PDF document
Scale may be incorrect when printed.

Contains information sourced from LINZ. Crown Copyright Reserved.

Unitary plan data sourced from Auckland Council published web services. Legend information can be viewed on Auckland Council unitary plan viewer.

Linework shown on this plan is conceptual only.
Not to be used for construction.

Auckland Council, LINZ, Waikato Regional, Esri, Community Maps Contributors, LINZ, Esri, HERE, Garmin, Foursquare, METI/NASA, USGS



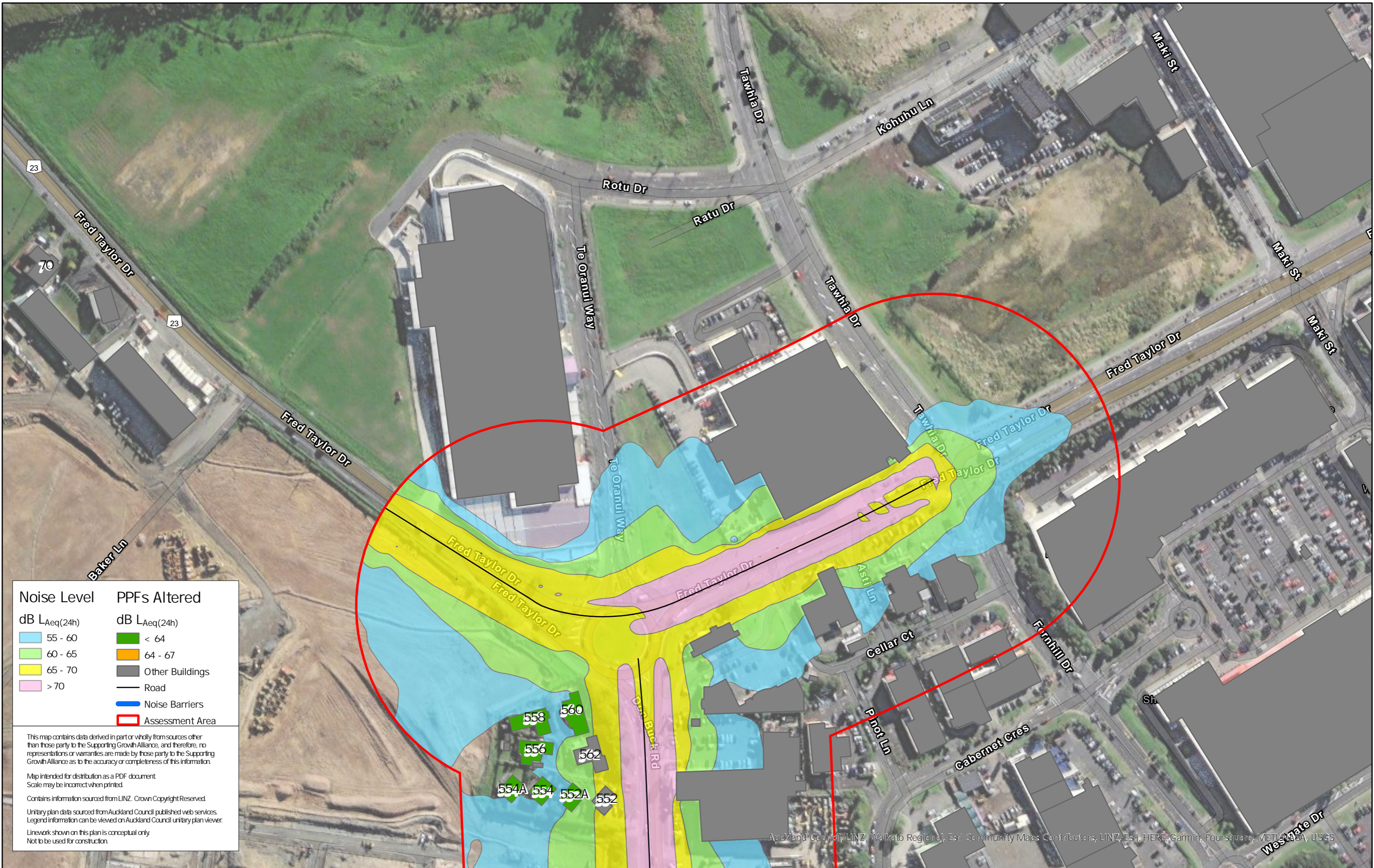
| Revision | Author | Verified | Approved | Date |
|----------|--------|----------|----------|----------|
| 1 | DA | SJ | CD | 22/11/22 |

Title: Supporting Growth
NoR R1 - Mitigation Option 1 Road Traffic Noise

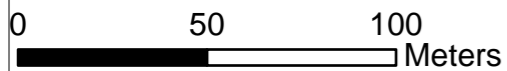
Client: Supporting Growth
Project: North West Package



Discipline: GIS
Drawing No:



Map Scale @ A3



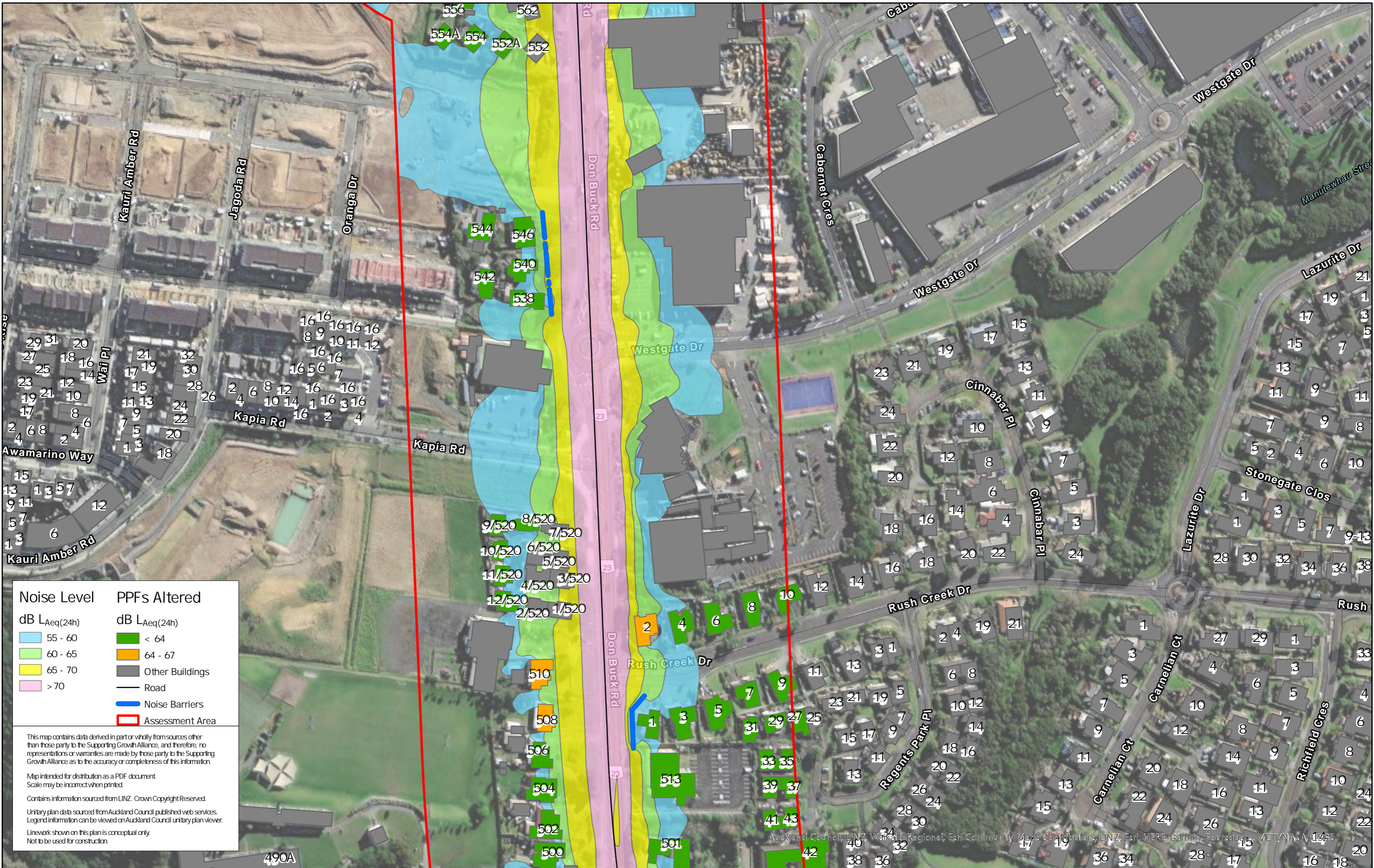
| Revision | Author | Verified | Approved | Date |
|----------|--------|----------|----------|----------|
| 1 | DA | SJ | CD | 22/11/22 |

Title: Supporting Growth
NoR R1 - Mitigation Option 2 Road Traffic Noise

Client: Supporting Growth
Project: North West Package



Discipline: GIS
Drawing No:



| Noise Level | PPFs Altered |
|-------------|-----------------|
| 55 - 60 | < 64 |
| 60 - 65 | 64 - 67 |
| 65 - 70 | Other Buildings |
| > 70 | Road |
| | Noise Barriers |
| | Assessment Area |

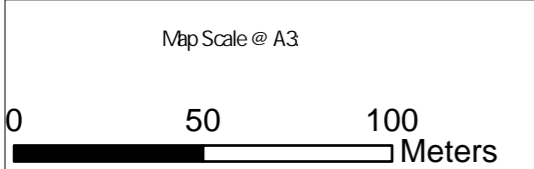
This map contains data derived in part or wholly from sources other than those party to the Supporting Growth Alliance, and therefore, no representations or warranties are made by those party to the Supporting Growth Alliance as to the accuracy or completeness of this information.

Map intended for distribution as a PDF document
Scale may be incorrect when printed.

Contains information sourced from LINZ. Crown Copyright Reserved.

Unitary plan data sourced from Auckland Council published web services. Legend information can be viewed on Auckland Council unitary plan viewer.

Linework shown on this plan is conceptual only.
Not to be used for construction.



| Revision | Author | Verified | Approved | Date |
|----------|--------|----------|----------|----------|
| 1 | DA | SJ | CD | 22/11/22 |

Supporting Growth
NoR R1 - Mitigation Option 2 Road Traffic Noise

Client: Supporting Growth
 Project: North West Package



Discipline: GIS
 Drawing No:



| Noise Level | PPFs Altered |
|-------------|-----------------|
| 55 - 60 | < 64 |
| 60 - 65 | 64 - 67 |
| 65 - 70 | Other Buildings |
| > 70 | Road |
| | Noise Barriers |
| | Assessment Area |

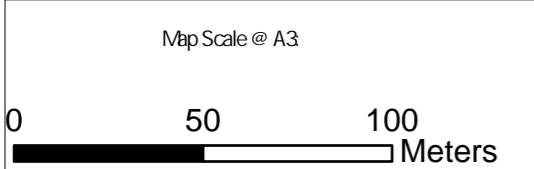
This map contains data derived in part or wholly from sources other than those party to the Supporting Growth Alliance, and therefore, no representations or warranties are made by those party to the Supporting Growth Alliance as to the accuracy or completeness of this information.

Map intended for distribution as a PDF document
Scale may be incorrect when printed.

Contains information sourced from LINZ. Crown Copyright Reserved.

Unitary plan data sourced from Auckland Council published web services. Legend information can be viewed on Auckland Council unitary plan viewer.

Linework shown on this plan is conceptual only.
Not to be used for construction.



| Revision | Author | Verified | Approved | Date | Title |
|----------|--------|----------|----------|----------|-------|
| 1 | DA | SJ | CD | 22/11/22 | |

Supporting Growth
NoR R1 - Mitigation Option 2 Road Traffic Noise

| | |
|---------|--------------------|
| Client | Supporting Growth |
| Project | North West Package |



| | |
|-------------|-----|
| Discipline: | GIS |
| Drawing No: | |



| Noise Level | PPFs Altered |
|-------------|-----------------|
| 55 - 60 | < 64 |
| 60 - 65 | 64 - 67 |
| 65 - 70 | Other Buildings |
| > 70 | Road |
| | Noise Barriers |
| | Assessment Area |

This map contains data derived in part or wholly from sources other than those party to the Supporting Growth Alliance, and therefore, no representations or warranties are made by those party to the Supporting Growth Alliance as to the accuracy or completeness of this information.

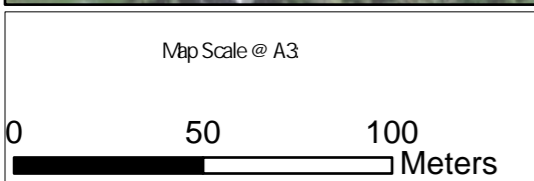
Map intended for distribution as a PDF document
Scale may be incorrect when printed.

Contains information sourced from LINZ. Crown Copyright Reserved.

Unitary plan data sourced from Auckland Council published web services. Legend information can be viewed on Auckland Council unitary plan viewer.

Linework shown on this plan is conceptual only.
Not to be used for construction.

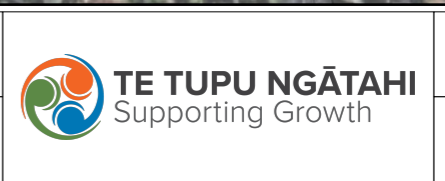
Auckland Council, LINZ, Waikato Regional, Esri Community Maps Contributors, LINZ, Esri, HERE, Garmin, Foursquare, METI/NASA, USGS



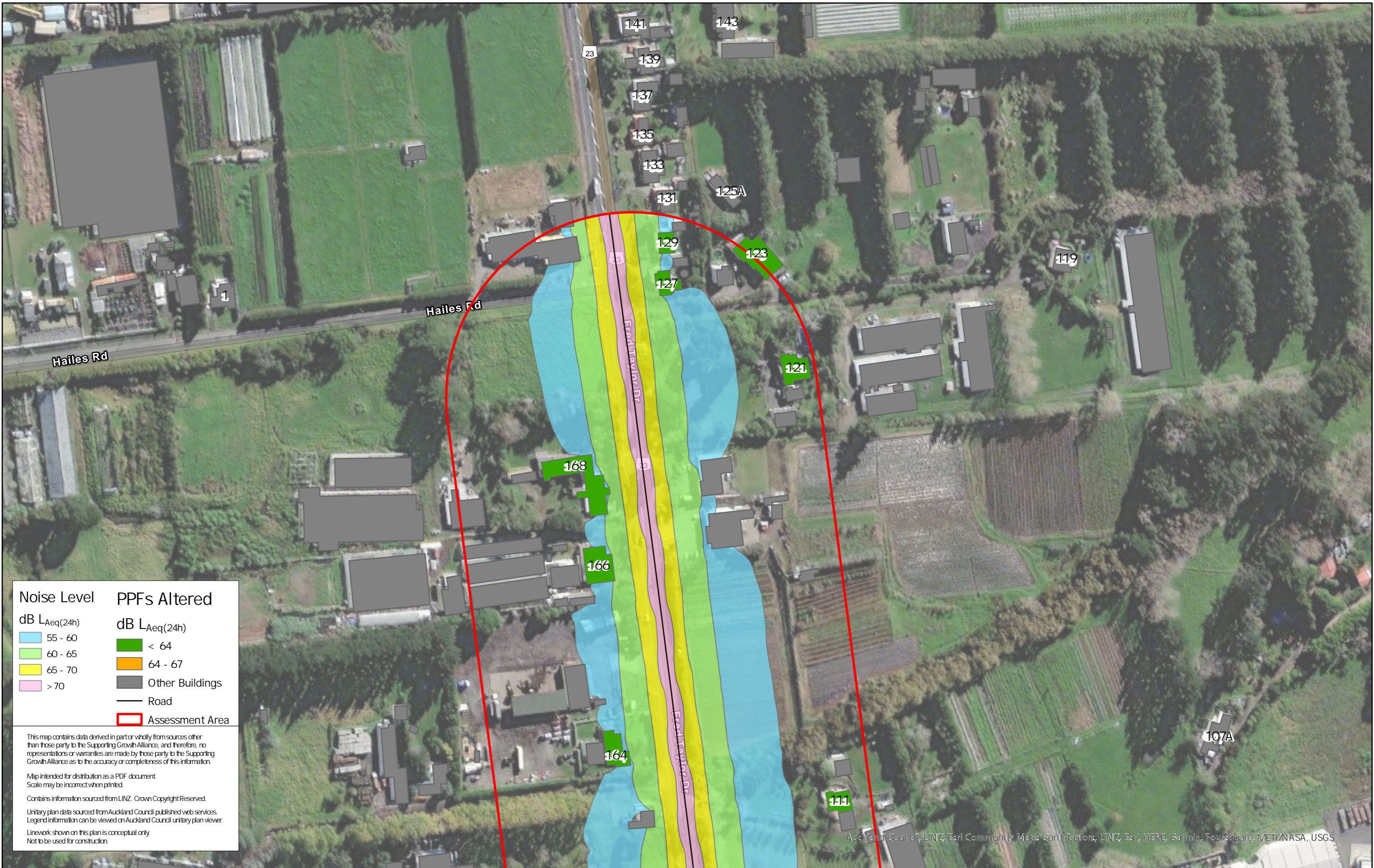
| Revision | Author | Verified | Approved | Date |
|----------|--------|----------|----------|----------|
| 1 | DA | SJ | CD | 22/11/22 |

Title: Supporting Growth
NoR R1 - Mitigation Option 2 Road Traffic Noise

Client: Supporting Growth
Project: North West Package



Discipline: GIS
Drawing No:



| Noise Level | PPFs Altered |
|-------------------|-------------------|
| dB $L_{Aeq}(24h)$ | dB $L_{Aeq}(24h)$ |
| 55 - 60 | < 64 |
| 60 - 65 | 64 - 67 |
| 65 - 70 | Other Buildings |
| > 70 | Road |
| | Assessment Area |

This map contains data derived in part or wholly from sources other than those party to the Supporting Growth Alliance, and therefore, no representations or warranties are made by those party to the Supporting Growth Alliance as to the accuracy or completeness of this information.

Map intended for distribution as a PDF document
Scale may be incorrect when printed.

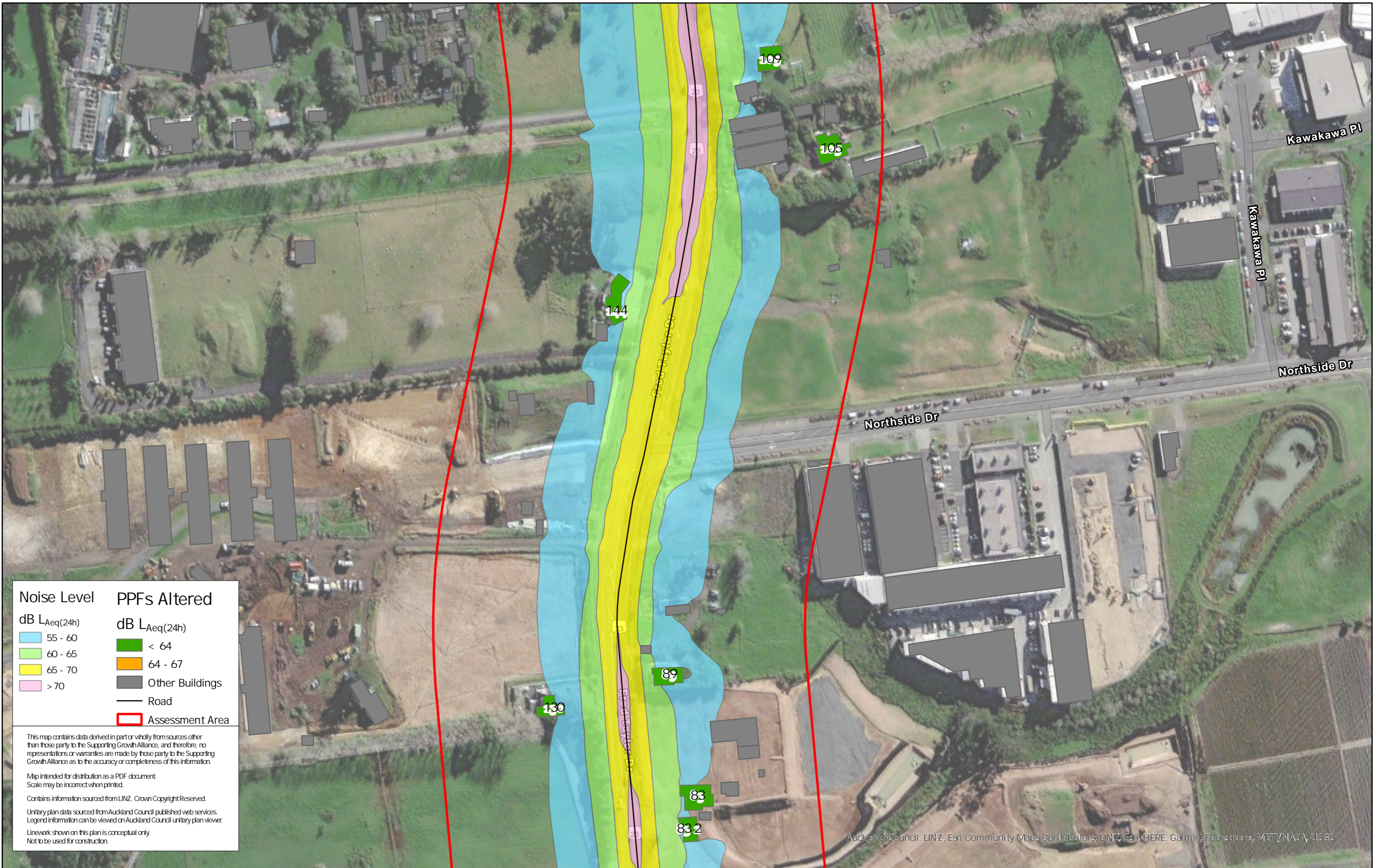
Contains information sourced from LINZ. Crown Copyright Reserved.

Unitary plan data sourced from Auckland Council published web services.
Legend information can be viewed on Auckland Council unitary plan viewer.

Linework shown on this plan is conceptual only.
Not to be used for construction.

Auckland Council, LINZ, Esri Community Maps Contributors, LINZ, Esri, HERE, Garmin, Foursquare, METI/NASA, USGS

| | | | | | | | | | | | | |
|-----------------------------------|--|----------|--------|----------|----------|----------|---|---------|--------------------|--|-------------|-----|
| Map Scale @ A3 0 50 100 Meters | | Revision | Author | Verified | Approved | Date | Title: Supporting Growth NoR R2 - Existing Road Traffic Noise | Client | Supporting Growth | | Discipline: | GIS |
| | | 1 | DA | SJ | CD | 22/11/22 | | Project | North West Package | | Drawing No: | |



| Noise Level | PPFs Altered |
|-------------------|-------------------|
| dB $L_{Aeq}(24h)$ | dB $L_{Aeq}(24h)$ |
| 55 - 60 | < 64 |
| 60 - 65 | 64 - 67 |
| 65 - 70 | Other Buildings |
| > 70 | Road |
| | Assessment Area |

This map contains data derived in part or wholly from sources other than those party to the Supporting Growth Alliance, and therefore, no representations or warranties are made by those party to the Supporting Growth Alliance as to the accuracy or completeness of this information.

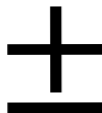
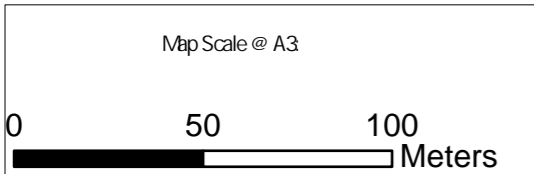
Map intended for distribution as a PDF document
Scale may be incorrect when printed.

Contains information sourced from LINZ. Crown Copyright Reserved.

Unitary plan data sourced from Auckland Council published web services.
Legend information can be viewed on Auckland Council unitary plan viewer.

Linework shown on this plan is conceptual only.
Not to be used for construction.

Auckland Council, LINZ, Esri Community Maps Contributors, LINZ, Esri, HERE, Garmin, Foursquare, METI/NASA, USGS



| Revision | Author | Verified | Approved | Date |
|----------|--------|----------|----------|----------|
| 1 | DA | SJ | CD | 22/11/22 |

Title: **Supporting Growth
NoR R2 - Existing Road Traffic Noise**

Client: Supporting Growth

Project: North West Package



Discipline: GIS

Drawing No:



| Noise Level | PPFs Altered |
|-------------|-----------------|
| 55 - 60 | < 64 |
| 60 - 65 | 64 - 67 |
| 65 - 70 | Other Buildings |
| > 70 | Road |
| | Assessment Area |

This map contains data derived in part or wholly from sources other than those party to the Supporting Growth Alliance, and therefore, no representations or warranties are made by those party to the Supporting Growth Alliance as to the accuracy or completeness of this information.

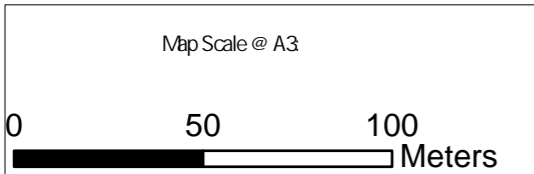
Map intended for distribution as a PDF document
Scale may be incorrect when printed.

Contains information sourced from LINZ. Crown Copyright Reserved.

Unitary plan data sourced from Auckland Council published web services.
Legend information can be viewed on Auckland Council unitary plan viewer.

Linework shown on this plan is conceptual only.
Not to be used for construction.

Auckland Council, LINZ, Esri Community Maps Contributors, LINZ, Esri, HERE, Garmin, Foursquare, METI/NASA, USGS



| Revision | Author | Verified | Approved | Date |
|----------|--------|----------|----------|----------|
| 1 | DA | SJ | CD | 22/11/22 |

Title: **Supporting Growth**
NoR R2 - Existing Road Traffic Noise

Client: Supporting Growth

Project: North West Package



Discipline: GIS

Drawing No:



Noise Level

dB LAeq(24h)

- 55 - 60
- 60 - 65
- 65 - 70
- > 70

PPFs Altered

dB LAeq(24h)

- < 64
- 64 - 67
- Other Buildings
- Road
- Assessment Area

This map contains data derived in part or wholly from sources other than those party to the Supporting Growth Alliance, and therefore, no representations or warranties are made by those party to the Supporting Growth Alliance as to the accuracy or completeness of this information.

Map intended for distribution as a PDF document
Scale may be incorrect when printed.

Contains information sourced from LINZ. Crown Copyright Reserved.

Unitary plan data sourced from Auckland Council published web services.
Legend information can be viewed on Auckland Council unitary plan viewer.

Linework shown on this plan is conceptual only.
Not to be used for construction.

Auckland Council, LINZ, Waikato Regional, Esri Community Maps Contributors, LINZ, Esri, HERE, Garmin, Foursquare, METI/NASA, USGS

| | | | | | | | | | | | | |
|----------------|--|----------|--------|----------|----------|----------|---|---------|--------------------|---|-------------|-----|
| Map Scale @ A3 | | Revision | Author | Verified | Approved | Date | Supporting Growth NoR R2 - Existing Road Traffic Noise | Client | Supporting Growth | TE TUPU NGĀTAHI Supporting Growth | Discipline: | GIS |
| | | 1 | DA | SJ | CD | 22/11/22 | | Project | North West Package | | Drawing No: | |



| Noise Level | PPFs Altered |
|-------------|-----------------|
| 55 - 60 | < 64 |
| 60 - 65 | 64 - 67 |
| 65 - 70 | Other Buildings |
| > 70 | Road |
| | Assessment Area |

This map contains data derived in part or wholly from sources other than those party to the Supporting Growth Alliance, and therefore, no representations or warranties are made by those party to the Supporting Growth Alliance as to the accuracy or completeness of this information.

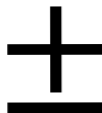
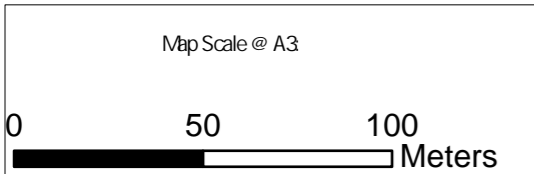
Map intended for distribution as a PDF document
Scale may be incorrect when printed.

Contains information sourced from LINZ. Crown Copyright Reserved.

Unitary plan data sourced from Auckland Council published web services.
Legend information can be viewed on Auckland Council unitary plan viewer.

Linework shown on this plan is conceptual only.
Not to be used for construction.

Auckland Council, LINZ, Esri Community Maps Contributors, LINZ, Esri, HERE, Garmin, Foursquare, METI/NASA, USGS



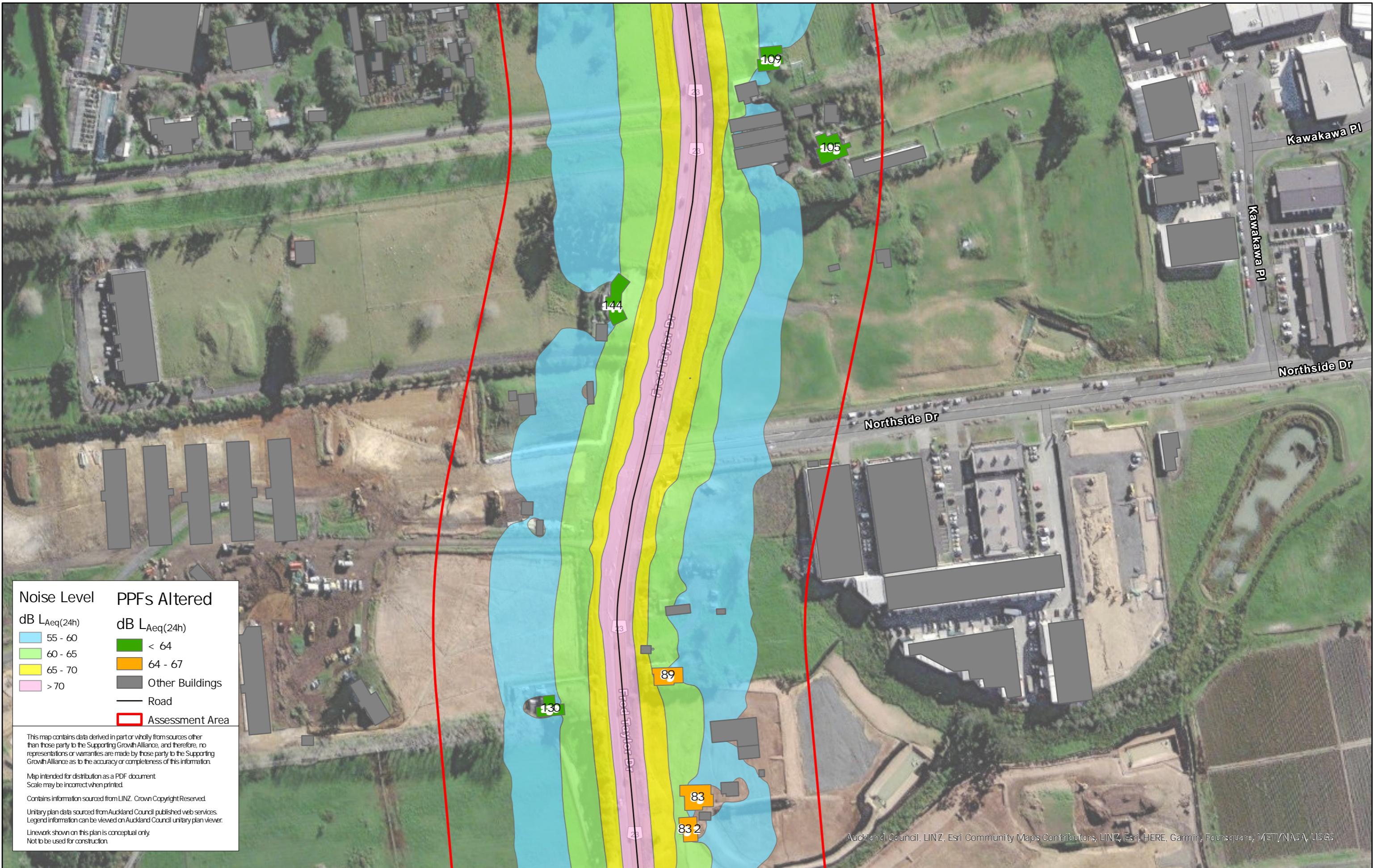
| Revision | Author | Verified | Approved | Date |
|----------|--------|----------|----------|----------|
| 1 | DA | SJ | CD | 22/11/22 |

Title: Supporting Growth
NoR R2 - Do Nothing Road Traffic Noise

Client: Supporting Growth
Project: North West Package



Discipline: GIS
Drawing No:



| Noise Level | PPFs Altered |
|-------------|-----------------|
| 55 - 60 | < 64 |
| 60 - 65 | 64 - 67 |
| 65 - 70 | Other Buildings |
| > 70 | Road |
| | Assessment Area |

This map contains data derived in part or wholly from sources other than those party to the Supporting Growth Alliance, and therefore, no representations or warranties are made by those party to the Supporting Growth Alliance as to the accuracy or completeness of this information.

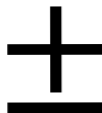
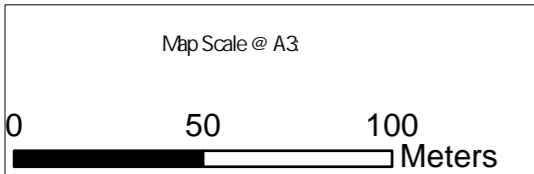
Map intended for distribution as a PDF document
Scale may be incorrect when printed.

Contains information sourced from LINZ. Crown Copyright Reserved.

Unitary plan data sourced from Auckland Council published web services.
Legend information can be viewed on Auckland Council unitary plan viewer.

Linework shown on this plan is conceptual only.
Not to be used for construction.

Auckland Council, LINZ, Esri Community Maps Contributors, LINZ, Esri, HERE, Garmin, Foursquare, METI/NASA, USGS



| Revision | Author | Verified | Approved | Date |
|----------|--------|----------|----------|----------|
| 1 | DA | SJ | CD | 22/11/22 |

Title: **Supporting Growth**
NoR R2 - Do Nothing Road Traffic Noise

Client: Supporting Growth

Project: North West Package



Discipline: GIS

Drawing No:



| Noise Level | PPFs Altered |
|-------------|-----------------|
| 55 - 60 | < 64 |
| 60 - 65 | 64 - 67 |
| 65 - 70 | Other Buildings |
| > 70 | Road |
| | Assessment Area |

This map contains data derived in part or wholly from sources other than those party to the Supporting Growth Alliance, and therefore, no representations or warranties are made by those party to the Supporting Growth Alliance as to the accuracy or completeness of this information.

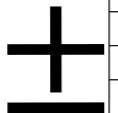
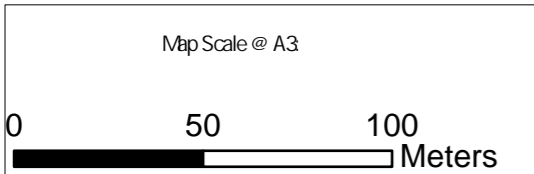
Map intended for distribution as a PDF document
Scale may be incorrect when printed.

Contains information sourced from LINZ. Crown Copyright Reserved.

Unitary plan data sourced from Auckland Council published web services.
Legend information can be viewed on Auckland Council unitary plan viewer.

Linework shown on this plan is conceptual only.
Not to be used for construction.

Auckland Council, LINZ, Esri Community Maps Contributors, LINZ, Esri, HERE, Garmin, Foursquare, METI/NASA, USGS



| Revision | Author | Verified | Approved | Date |
|----------|--------|----------|----------|----------|
| 1 | DA | SJ | CD | 22/11/22 |

Title: Supporting Growth
NoR R2 - Do Nothing Road Traffic Noise

Client: Supporting Growth
Project: North West Package



Discipline: GIS
Drawing No:



| Noise Level | PPFs Altered |
|-------------------|-------------------|
| dB $L_{Aeq(24h)}$ | dB $L_{Aeq(24h)}$ |
| 55 - 60 | < 64 |
| 60 - 65 | 64 - 67 |
| 65 - 70 | Other Buildings |
| > 70 | Road |
| | Assessment Area |

This map contains data derived in part or wholly from sources other than those party to the Supporting Growth Alliance, and therefore, no representations or warranties are made by those party to the Supporting Growth Alliance as to the accuracy or completeness of this information.

Map intended for distribution as a PDF document
Scale may be incorrect when printed.

Contains information sourced from LINZ. Crown Copyright Reserved.

Unitary plan data sourced from Auckland Council published web services.
Legend information can be viewed on Auckland Council unitary plan viewer.

Linework shown on this plan is conceptual only.
Not to be used for construction.

Auckland Council, LINZ, Waikato Regional, Esri Community Maps Contributors, LINZ, Esri, HERE, Garmin, Foursquare, METI/NASA, USGS

| | | | | | | | | | | | | |
|-----------------------------------|--|----------|--------|----------|----------|----------|---|---------|--------------------|--|-------------|-----|
| Map Scale @ A3 0 50 100 Meters | | Revision | Author | Verified | Approved | Date | Title: Supporting Growth NoR R2 - Do Nothing Road Traffic Noise | Client | Supporting Growth | | Discipline: | GIS |
| | | 1 | DA | SJ | CD | 22/11/22 | | Project | North West Package | | Drawing No: | |