

Noise Level	PPFs Altered
55 - 60	< 64
60 - 65	64 - 67
65 - 70	> 67
> 70	Other Buildings
	Road
	Assessment Area

This map contains data derived in part or wholly from sources other than those party to the Supporting Growth Alliance, and therefore, no representations or warranties are made by those party to the Supporting Growth Alliance as to the accuracy or completeness of this information.

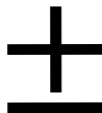
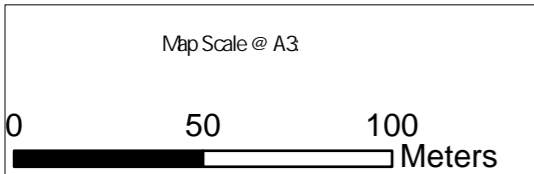
Map intended for distribution as a PDF document
Scale may be incorrect when printed.

Contains information sourced from LINZ. Crown Copyright Reserved.

Unitary plan data sourced from Auckland Council published web services.
Legend information can be viewed on Auckland Council unitary plan viewer.

Linework shown on this plan is conceptual only.
Not to be used for construction.

Auckland Council, LINZ, Esri Community Maps Contributors, LINZ, Esri, HERE, Garmin, Foursquare, METI/NASA, USGS



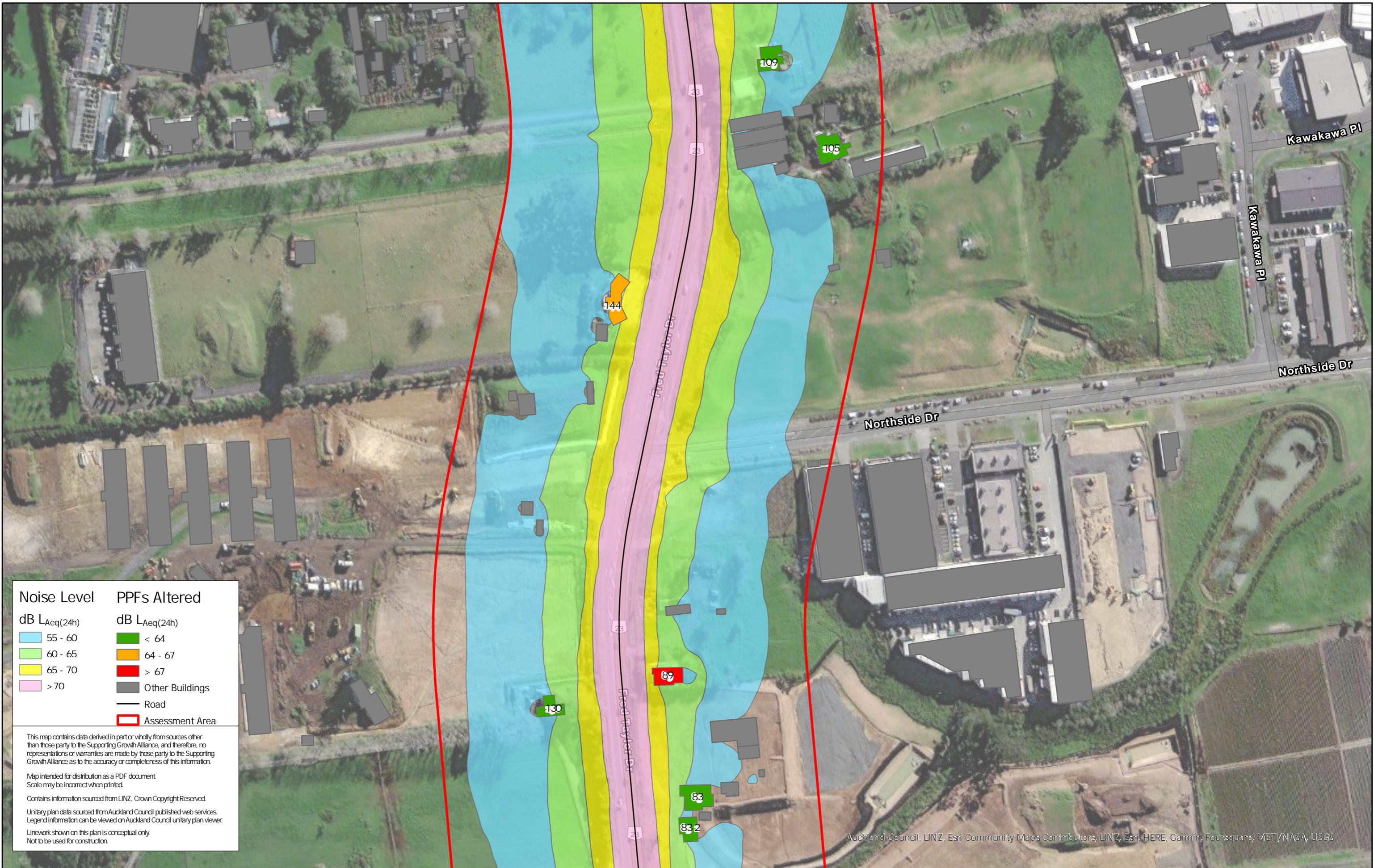
Revision	Author	Verified	Approved	Date
1	DA	SJ	CD	22/11/22

Title: Supporting Growth
NoR R2 - Do Minimum Road Traffic Noise

Client: Supporting Growth
Project: North West Package



Discipline: GIS
Drawing No:



Noise Level	PPFs Altered
dB LAeq(24h)	dB LAeq(24h)
55 - 60	< 64
60 - 65	64 - 67
65 - 70	> 67
> 70	Other Buildings
	Road
	Assessment Area

This map contains data derived in part or wholly from sources other than those party to the Supporting Growth Alliance, and therefore, no representations or warranties are made by those party to the Supporting Growth Alliance as to the accuracy or completeness of this information.

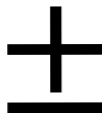
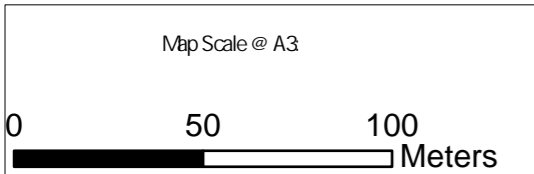
Map intended for distribution as a PDF document
Scale may be incorrect when printed.

Contains information sourced from LINZ. Crown Copyright Reserved.

Unitary plan data sourced from Auckland Council published web services. Legend information can be viewed on Auckland Council unitary plan viewer.

Linework shown on this plan is conceptual only.
Not to be used for construction.

Auckland Council, LINZ, Esri Community Maps Contributors, LINZ, Esri, HERE, Garmin, Foursquare, METI/NASA, USGS



Revision	Author	Verified	Approved	Date
1	DA	SJ	CD	22/11/22

Title: **Supporting Growth**
NoR R2 - Do Minimum Road Traffic Noise

Client: Supporting Growth

Project: North West Package



Discipline: GIS

Drawing No:



Noise Level	PPFs Altered
55 - 60	< 64
60 - 65	64 - 67
65 - 70	> 67
> 70	Other Buildings
	Road
	Assessment Area

This map contains data derived in part or wholly from sources other than those party to the Supporting Growth Alliance, and therefore, no representations or warranties are made by those party to the Supporting Growth Alliance as to the accuracy or completeness of this information.

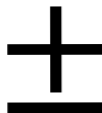
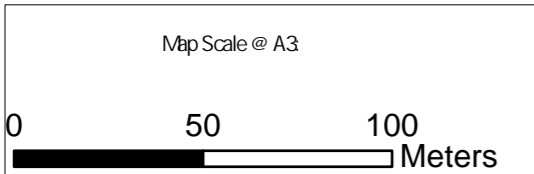
Map intended for distribution as a PDF document
Scale may be incorrect when printed.

Contains information sourced from LINZ. Crown Copyright Reserved.

Unitary plan data sourced from Auckland Council published web services.
Legend information can be viewed on Auckland Council unitary plan viewer.

Linework shown on this plan is conceptual only.
Not to be used for construction.

Auckland Council, LINZ, Esri Community Maps Contributors, LINZ, Esri, HERE, Garmin, Foursquare, METI/NASA, USGS



Revision	Author	Verified	Approved	Date
1	DA	SJ	CD	22/11/22

Title: Supporting Growth
NoR R2 - Do Minimum Road Traffic Noise

Client	Supporting Growth
Project	North West Package



Discipline:	GIS
Drawing No:	



Noise Level	PPFs Altered
dB LAeq(24h)	dB LAeq(24h)
55 - 60	< 64
60 - 65	64 - 67
65 - 70	> 67
> 70	Other Buildings
	Road
	Assessment Area

This map contains data derived in part or wholly from sources other than those party to the Supporting Growth Alliance, and therefore, no representations or warranties are made by those party to the Supporting Growth Alliance as to the accuracy or completeness of this information.

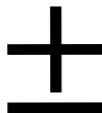
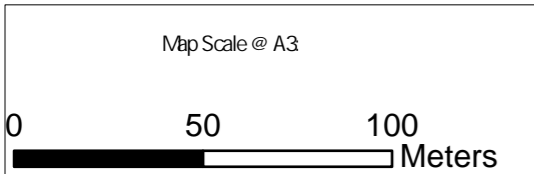
Map intended for distribution as a PDF document
Scale may be incorrect when printed.

Contains information sourced from LINZ. Crown Copyright Reserved.

Unitary plan data sourced from Auckland Council published web services.
Legend information can be viewed on Auckland Council unitary plan viewer.

Linework shown on this plan is conceptual only.
Not to be used for construction.

Auckland Council, LINZ, Waikato Regional, Esri Community Maps Contributors, LINZ, Esri, HERE, Garmin, Foursquare, METI/NASA, USGS



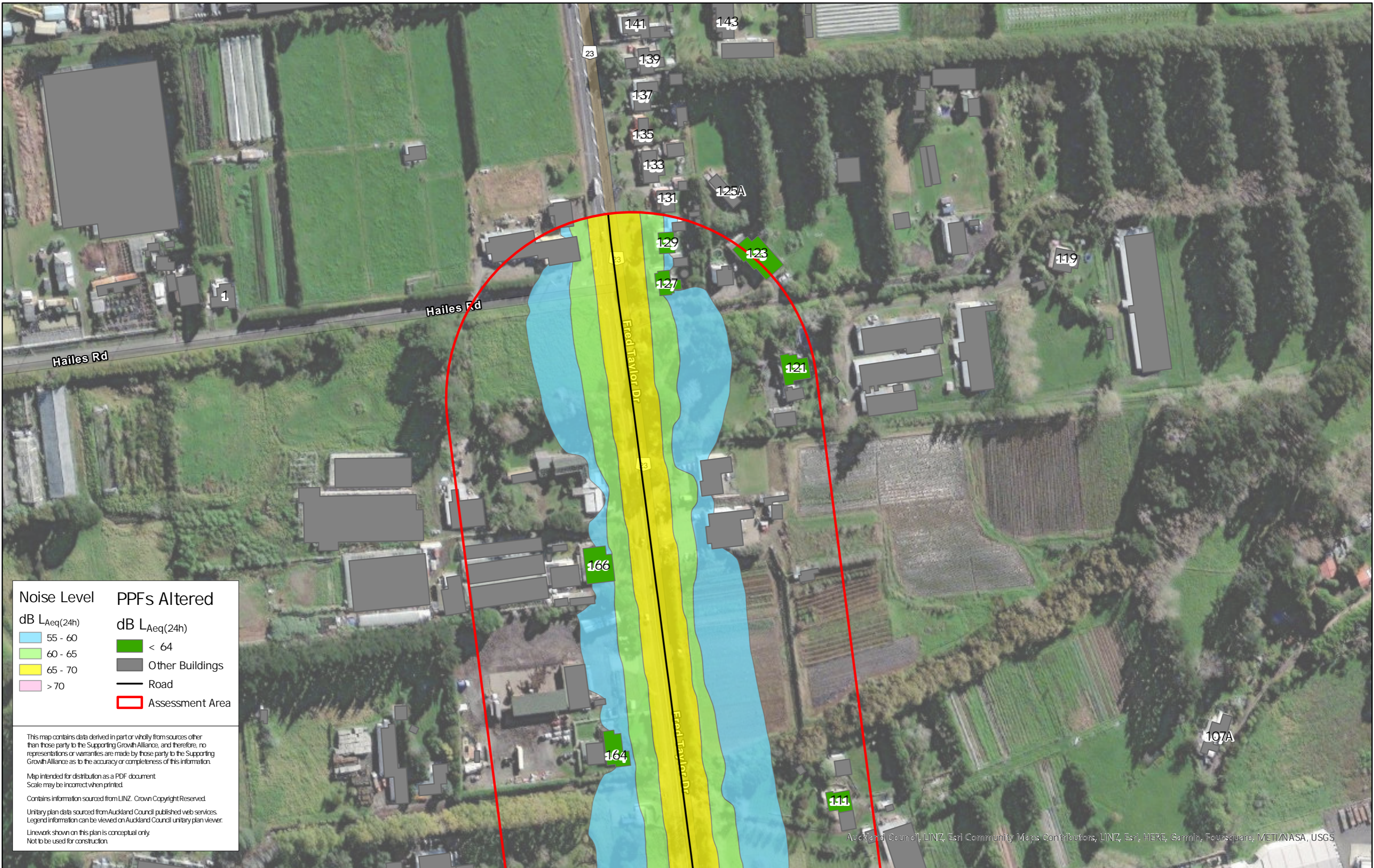
Revision	Author	Verified	Approved	Date
1	DA	SJ	CD	22/11/22

Title: Supporting Growth
NoR R2 - Do Minimum Road Traffic Noise

Client: Supporting Growth
Project: North West Package



Discipline: GIS
Drawing No:



Noise Level	PPFs Altered
dB $L_{Aeq}(24h)$	dB $L_{Aeq}(24h)$
55 - 60	< 64
60 - 65	Other Buildings
65 - 70	Road
> 70	Assessment Area

This map contains data derived in part or wholly from sources other than those party to the Supporting Growth Alliance, and therefore, no representations or warranties are made by those party to the Supporting Growth Alliance as to the accuracy or completeness of this information.

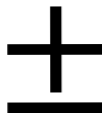
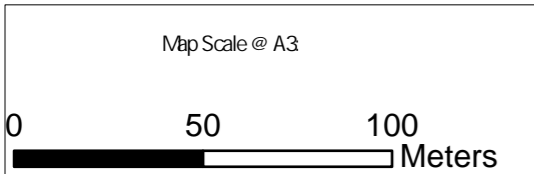
Map intended for distribution as a PDF document
Scale may be incorrect when printed.

Contains information sourced from LINZ. Crown Copyright Reserved.

Unitary plan data sourced from Auckland Council published web services.
Legend information can be viewed on Auckland Council unitary plan viewer.

Linework shown on this plan is conceptual only.
Not to be used for construction.

Auckland Council, LINZ, Esri Community Maps Contributors, LINZ, Esri, HERE, Garmin, Foursquare, METI/NASA, USGS



Revision	Author	Verified	Approved	Date
1	DA	SJ	CD	22/11/22

Title: **Supporting Growth**
NoR R2 - Mitigated Road Traffic Noise

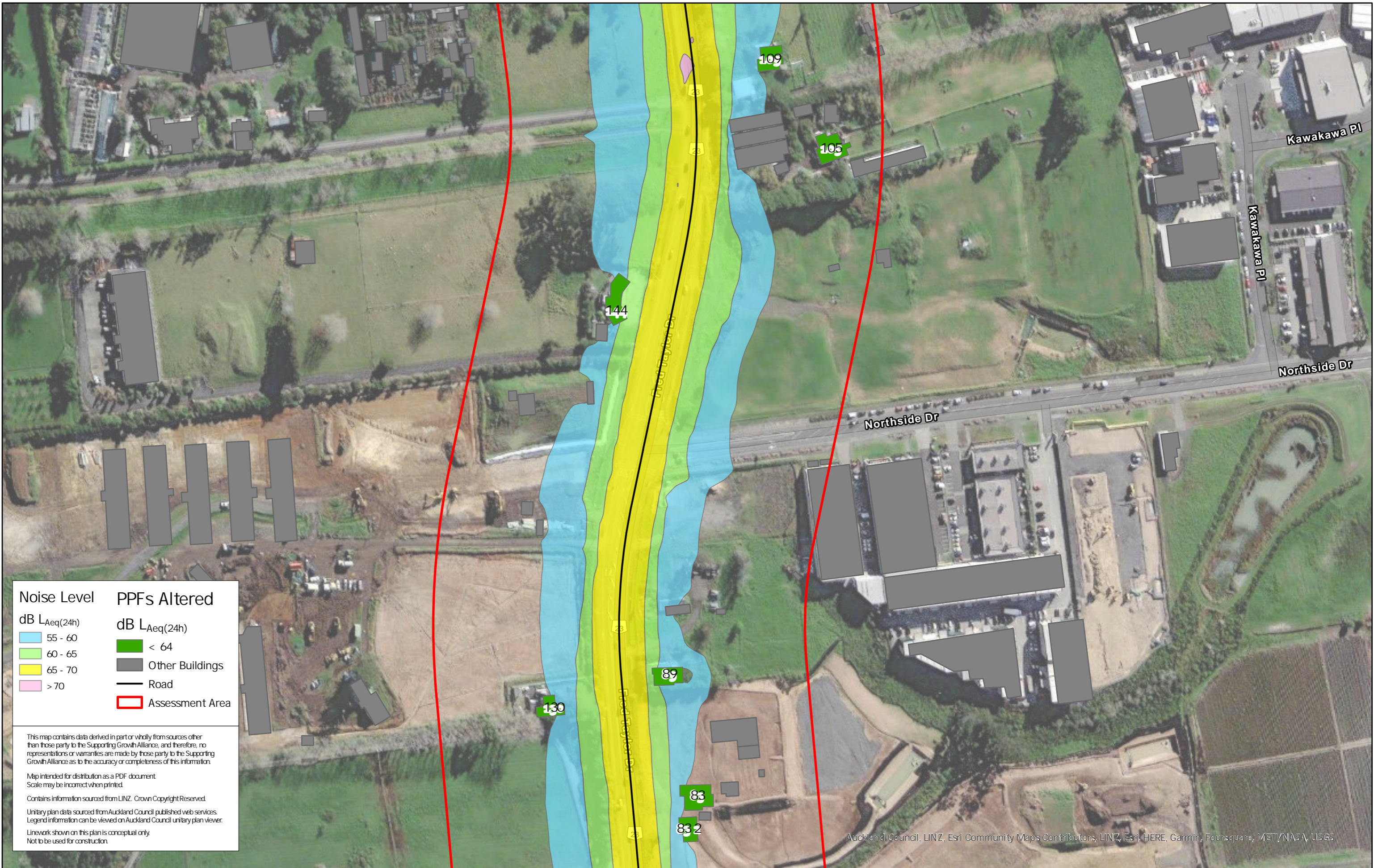
Client: Supporting Growth

Project: North West Package



Discipline: GIS

Drawing No:



Noise Level	PPFs Altered
dB $L_{Aeq}(24h)$	dB $L_{Aeq}(24h)$
55 - 60	< 64
60 - 65	Other Buildings
65 - 70	Road
> 70	Assessment Area

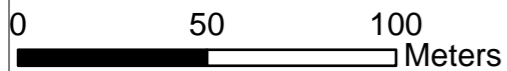
This map contains data derived in part or wholly from sources other than those party to the Supporting Growth Alliance, and therefore, no representations or warranties are made by those party to the Supporting Growth Alliance as to the accuracy or completeness of this information.

Map intended for distribution as a PDF document
Scale may be incorrect when printed.

Contains information sourced from LINZ. Crown Copyright Reserved.
Unitary plan data sourced from Auckland Council published web services.
Legend information can be viewed on Auckland Council unitary plan viewer.
Linework shown on this plan is conceptual only.
Not to be used for construction.

Auckland Council, LINZ, Esri Community Maps Contributors, LINZ, Esri, HERE, Garmin, Foursquare, METI/NASA, USGS

Map Scale @ A3



Revision	Author	Verified	Approved	Date
1	DA	SJ	CD	22/11/22

Title:

Supporting Growth NoR R2 - Mitigated Road Traffic Noise

Client

Supporting Growth

Project

North West Package



Discipline:

GIS

Drawing No:



Noise Level
 dB $L_{Aeq}(24h)$

- 55 - 60
- 60 - 65
- 65 - 70
- > 70

PPFs Altered
 dB $L_{Aeq}(24h)$

- < 64
- Other Buildings
- Road
- Assessment Area

This map contains data derived in part or wholly from sources other than those party to the Supporting Growth Alliance, and therefore, no representations or warranties are made by those party to the Supporting Growth Alliance as to the accuracy or completeness of this information.

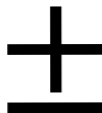
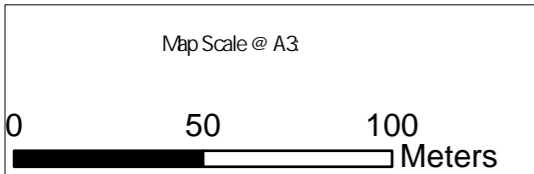
Map intended for distribution as a PDF document
 Scale may be incorrect when printed.

Contains information sourced from LINZ. Crown Copyright Reserved.

Unitary plan data sourced from Auckland Council published web services.
 Legend information can be viewed on Auckland Council unitary plan viewer.

Linework shown on this plan is conceptual only.
 Not to be used for construction.

Auckland Council, LINZ, Esri Community Maps Contributors, LINZ, Esri, HERE, Garmin, Foursquare, METI/NASA, USGS



Revision	Author	Verified	Approved	Date
1	DA	SJ	CD	22/11/22

Title:
 Supporting Growth
 NoR R2 - Mitigated Road Traffic Noise

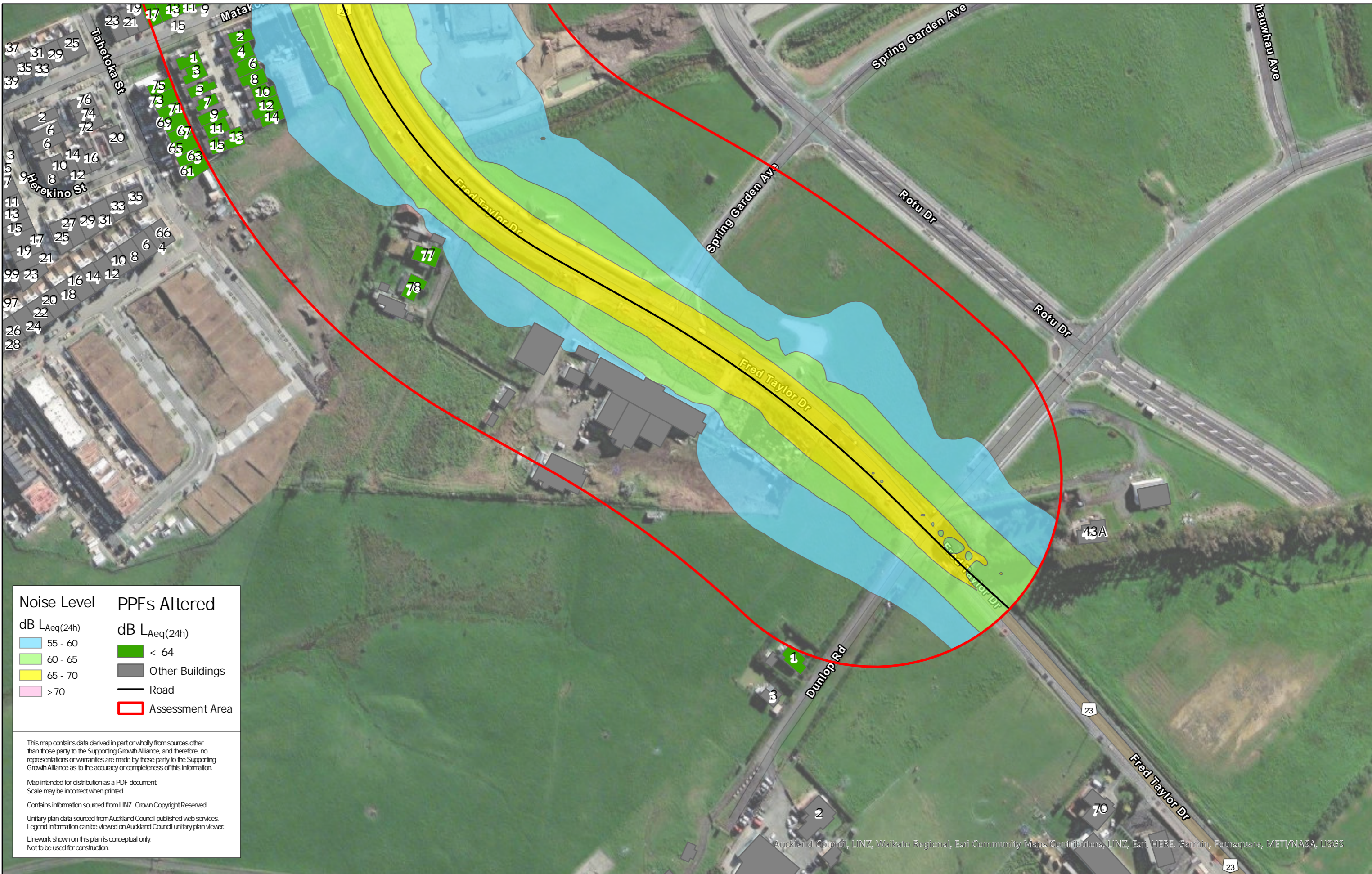
Client: Supporting Growth

Project: North West Package



Discipline: GIS

Drawing No:



Noise Level	PPFs Altered
dB $L_{Aeq}(24h)$	dB $L_{Aeq}(24h)$
55 - 60	< 64
60 - 65	Other Buildings
65 - 70	Road
> 70	Assessment Area

This map contains data derived in part or wholly from sources other than those party to the Supporting Growth Alliance, and therefore, no representations or warranties are made by those party to the Supporting Growth Alliance as to the accuracy or completeness of this information.

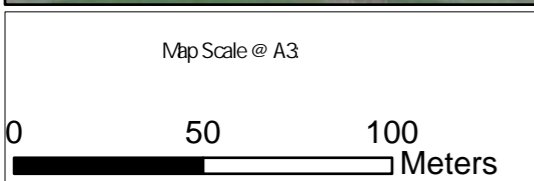
Map intended for distribution as a PDF document
Scale may be incorrect when printed.

Contains information sourced from LINZ. Crown Copyright Reserved.

Unitary plan data sourced from Auckland Council published web services.
Legend information can be viewed on Auckland Council unitary plan viewer.

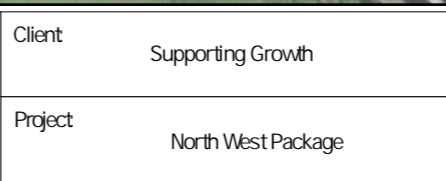
Linework shown on this plan is conceptual only.
Not to be used for construction.

Auckland Council, LINZ, Waikato Regional, Esri Community Maps Contributors, LINZ, Esri, HERE, Garmin, Foursquare, METI/NASA, USGS



Revision	Author	Verified	Approved	Date	Title:
1	DA	SJ	CD	22/11/22	Supporting Growth NoR R2 - Mitigated Road Traffic Noise

Client	Supporting Growth
Project	North West Package



Discipline:	GIS
Drawing No:	



Noise Level	PPFs Altered
55 - 60	< 64
60 - 65	64 - 67
65 - 70	Other Buildings
> 70	Road
	Assessment Area

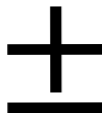
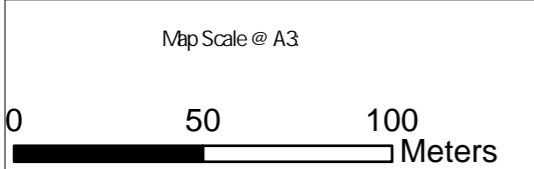
This map contains data derived in part or wholly from sources other than those party to the Supporting Growth Alliance, and therefore, no representations or warranties are made by those party to the Supporting Growth Alliance as to the accuracy or completeness of this information.

Map intended for distribution as a PDF document
Scale may be incorrect when printed.

Contains information sourced from LINZ. Crown Copyright Reserved.

Unitary plan data sourced from Auckland Council published web services.
Legend information can be viewed on Auckland Council unitary plan viewer.

Linework shown on this plan is conceptual only.
Not to be used for construction.



Revision	Author	Verified	Approved	Date
1	DA	SJ	CD	22/11/22

Title: **Supporting Growth**
NoR R3 - Existing Road Traffic Noise

Client: Supporting Growth

Project: North West Package



Discipline: GIS

Drawing No:



Noise Level	PPFs Altered
55 - 60	< 64
60 - 65	64 - 67
65 - 70	Other Buildings
> 70	Road
	Assessment Area

This map contains data derived in part or wholly from sources other than those party to the Supporting Growth Alliance, and therefore, no representations or warranties are made by those party to the Supporting Growth Alliance as to the accuracy or completeness of this information.

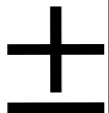
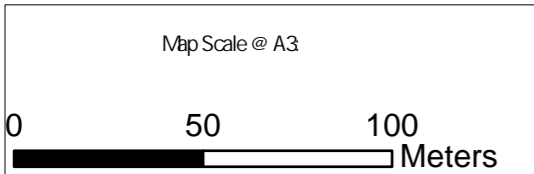
Map intended for distribution as a PDF document
Scale may be incorrect when printed.

Contains information sourced from LINZ. Crown Copyright Reserved.

Unitary plan data sourced from Auckland Council published web services.
Legend information can be viewed on Auckland Council unitary plan viewer.

Linework shown on this plan is conceptual only.
Not to be used for construction.

Auckland Council, LINZ, Esri Community Maps Contributors, LINZ, Esri, HERE, Garmin, Foursquare, METI/NASA, USGS



Revision	Author	Verified	Approved	Date
1	DA	SJ	CD	22/11/22

Title: **Supporting Growth**
NoR R3 - Existing Road Traffic Noise

Client: Supporting Growth

Project: North West Package



Discipline: GIS

Drawing No:



Noise Level	PPFs Altered
dB $L_{Aeq}(24h)$	dB $L_{Aeq}(24h)$
55 - 60	< 64
60 - 65	64 - 67
65 - 70	Other Buildings
> 70	Road
	Assessment Area

This map contains data derived in part or wholly from sources other than those party to the Supporting Growth Alliance, and therefore, no representations or warranties are made by those party to the Supporting Growth Alliance as to the accuracy or completeness of this information.

Map intended for distribution as a PDF document
Scale may be incorrect when printed.

Contains information sourced from LINZ. Crown Copyright Reserved.

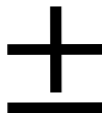
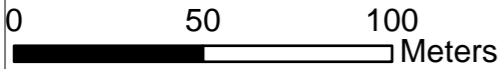
Unitary plan data sourced from Auckland Council published web services.
Legend information can be viewed on Auckland Council unitary plan viewer.

Linework shown on this plan is conceptual only.
Not to be used for construction.

Auckland Council, LINZ, Esri Community Maps Contributors, LINZ, Esri, HERE, Garmin, Foursquare, MET/NAASA, USGS

-161

Map Scale @ A3



Revision	Author	Verified	Approved	Date
1	DA	SJ	CD	22/11/22

Title:

Supporting Growth NoR R3 - Existing Road Traffic Noise

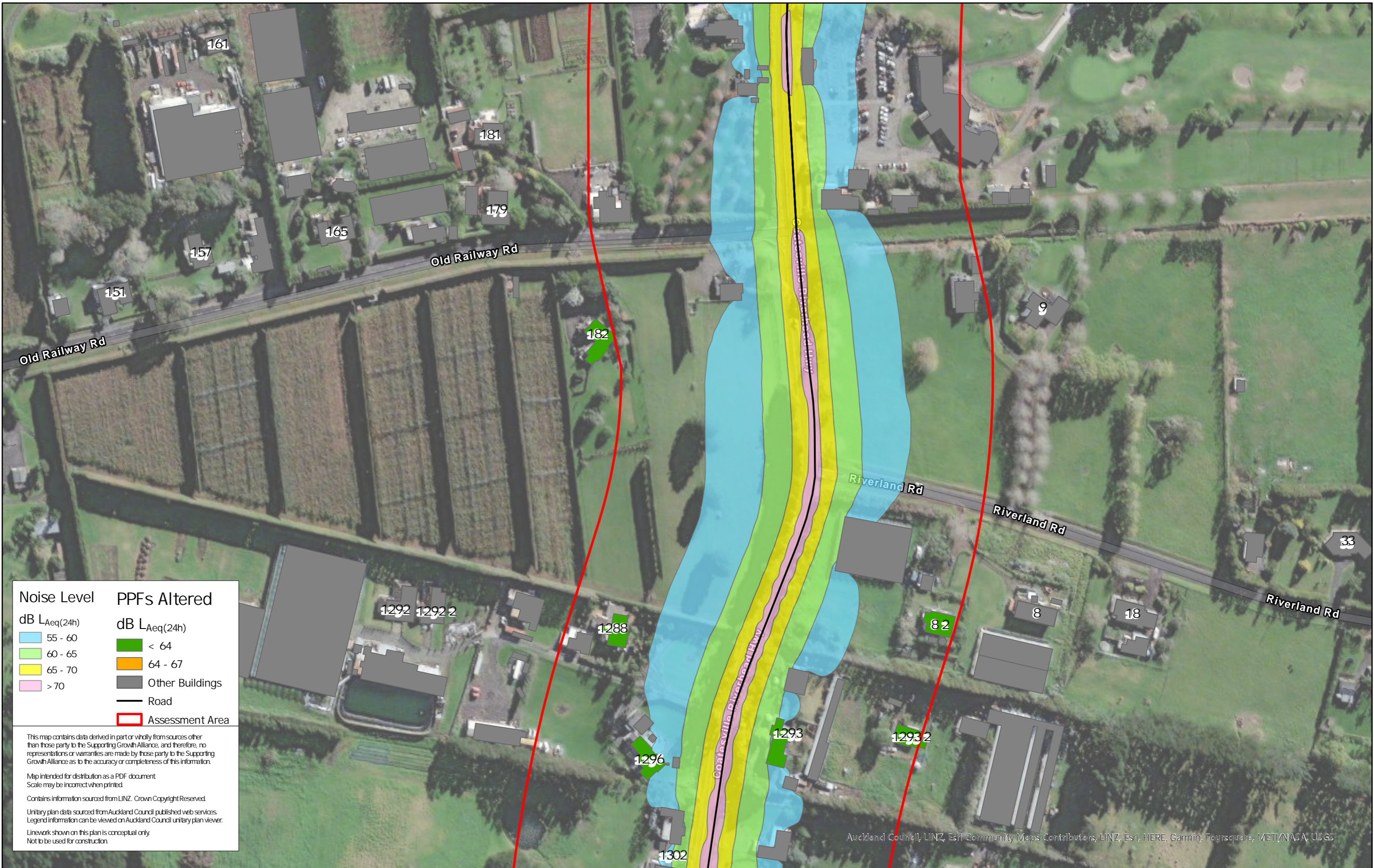
Client: Supporting Growth

Project: North West Package



Discipline: GIS

Drawing No:



Noise Level	PPFs Altered
dB $L_{Aeq(24h)}$	dB $L_{Aeq(24h)}$
55 - 60	< 64
60 - 65	64 - 67
65 - 70	Other Buildings
> 70	Road
	Assessment Area

This map contains data derived in part or wholly from sources other than those party to the Supporting Growth Alliance, and therefore, no representations or warranties are made by those party to the Supporting Growth Alliance as to the accuracy or completeness of this information.

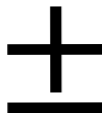
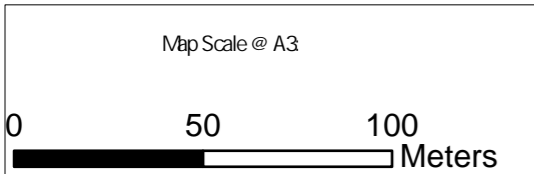
Map intended for distribution as a PDF document
Scale may be incorrect when printed.

Contains information sourced from LINZ. Crown Copyright Reserved.

Unitary plan data sourced from Auckland Council published web services.
Legend information can be viewed on Auckland Council unitary plan viewer.

Linework shown on this plan is conceptual only.
Not to be used for construction.

Auckland Council, LINZ, Esri Community Maps Contributors, LINZ, Esri, HERE, Garmin, Foursquare, METI/NASA, USGS



Revision	Author	Verified	Approved	Date
1	DA	SJ	CD	22/11/22

Title: **Supporting Growth**
NoR R3 - Existing Road Traffic Noise

Client: Supporting Growth

Project: North West Package



Discipline: GIS

Drawing No:



Noise Level	PPFs Altered
dB $L_{Aeq}(24h)$	dB $L_{Aeq}(24h)$
55 - 60	< 64
60 - 65	64 - 67
65 - 70	Other Buildings
> 70	Road
	Assessment Area

This map contains data derived in part or wholly from sources other than those party to the Supporting Growth Alliance, and therefore, no representations or warranties are made by those party to the Supporting Growth Alliance as to the accuracy or completeness of this information.

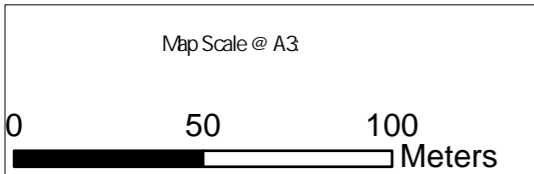
Map intended for distribution as a PDF document
Scale may be incorrect when printed.

Contains information sourced from LINZ. Crown Copyright Reserved.

Unitary plan data sourced from Auckland Council published web services.
Legend information can be viewed on Auckland Council unitary plan viewer.

Linework shown on this plan is conceptual only.
Not to be used for construction.

Auckland Council, LINZ, Esri Community Maps Contributors, LINZ, Esri, HERE, Garmin, Foursquare, METI/NASA, USGS



Revision	Author	Verified	Approved	Date	Title
1	DA	SJ	CD	22/11/22	

Supporting Growth
NoR R3 - Existing Road Traffic Noise

Client: Supporting Growth
Project: North West Package



Discipline: GIS
Drawing No:



Noise Level	PPFs Altered
dB $L_{Aeq}(24h)$	dB $L_{Aeq}(24h)$
55 - 60	< 64
60 - 65	64 - 67
65 - 70	Other Buildings
> 70	Road
	Assessment Area

This map contains data derived in part or wholly from sources other than those party to the Supporting Growth Alliance, and therefore, no representations or warranties are made by those party to the Supporting Growth Alliance as to the accuracy or completeness of this information.

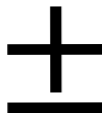
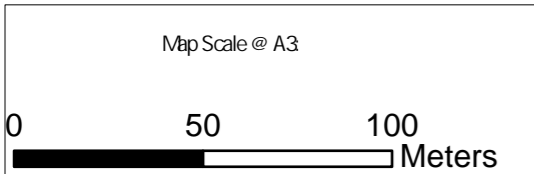
Map intended for distribution as a PDF document
Scale may be incorrect when printed.

Contains information sourced from LINZ. Crown Copyright Reserved.

Unitary plan data sourced from Auckland Council published web services.
Legend information can be viewed on Auckland Council unitary plan viewer.

Linework shown on this plan is conceptual only.
Not to be used for construction.

Auckland Council, LINZ, Esri, Community Maps Contributors, LINZ, Esri, HERE, Garmin, Foursquare, METI/NASA, USGS



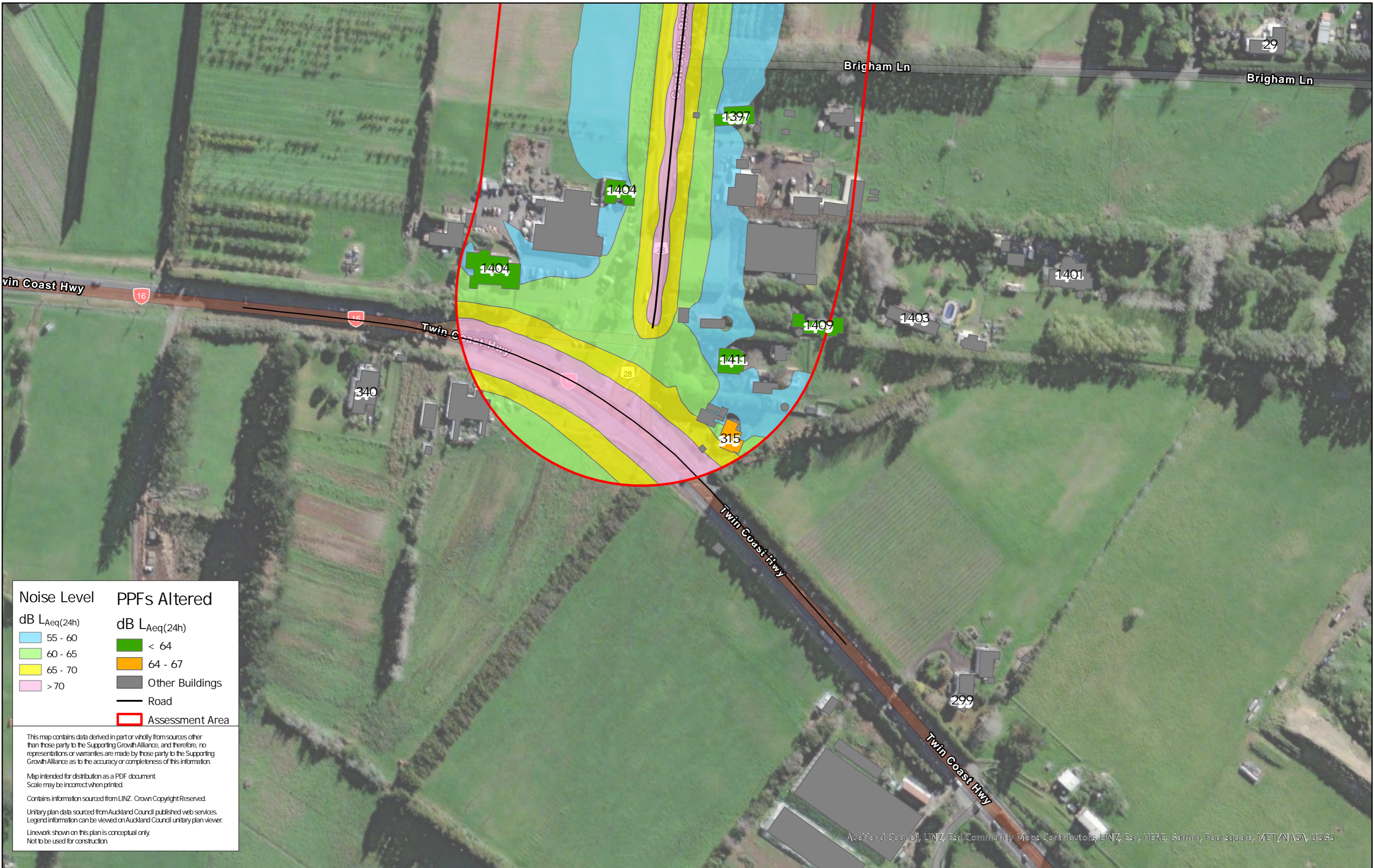
Revision	Author	Verified	Approved	Date
1	DA	SJ	CD	22/11/22

Title: Supporting Growth
NoR R3 - Existing Road Traffic Noise

Client: Supporting Growth
Project: North West Package



Discipline: GIS
Drawing No:



Noise Level	PPFs Altered
dB $L_{Aeq(24h)}$	dB $L_{Aeq(24h)}$
55 - 60	< 64
60 - 65	64 - 67
65 - 70	Other Buildings
> 70	Road
	Assessment Area

This map contains data derived in part or wholly from sources other than those party to the Supporting Growth Alliance, and therefore, no representations or warranties are made by those party to the Supporting Growth Alliance as to the accuracy or completeness of this information.

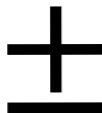
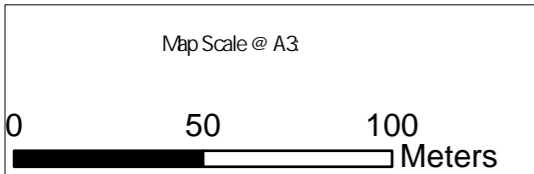
Map intended for distribution as a PDF document
Scale may be incorrect when printed.

Contains information sourced from LINZ. Crown Copyright Reserved.

Unitary plan data sourced from Auckland Council published web services.
Legend information can be viewed on Auckland Council unitary plan viewer.

Linework shown on this plan is conceptual only.
Not to be used for construction.

Auckland Council, LINZ, Esri Community Maps Contributors, LINZ, Esri, HERE, Garmin, Foursquare, METI/NASA, USGS



Revision	Author	Verified	Approved	Date
1	DA	SJ	CD	22/11/22

Title: Supporting Growth
NoR R3 - Existing Road Traffic Noise

Client: Supporting Growth
Project: North West Package



Discipline: GIS
Drawing No:



Noise Level	PPFs Altered
55 - 60	< 64
60 - 65	64 - 67
65 - 70	Other Buildings
> 70	Road
	Assessment Area

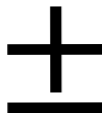
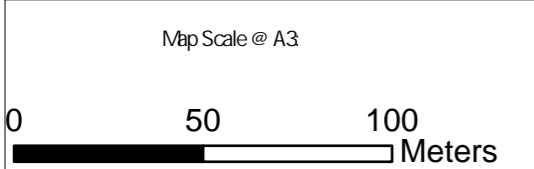
This map contains data derived in part or wholly from sources other than those party to the Supporting Growth Alliance, and therefore, no representations or warranties are made by those party to the Supporting Growth Alliance as to the accuracy or completeness of this information.

Map intended for distribution as a PDF document
Scale may be incorrect when printed.

Contains information sourced from LINZ. Crown Copyright Reserved.

Unitary plan data sourced from Auckland Council published web services. Legend information can be viewed on Auckland Council unitary plan viewer.

Linework shown on this plan is conceptual only.
Not to be used for construction.



Revision	Author	Verified	Approved	Date
1	DA	SJ	CD	22/11/22

Title: Supporting Growth
NoR R3 - Do Nothing Road Traffic Noise

Client: Supporting Growth

Project: North West Package



Discipline: GIS

Drawing No:



Noise Level

dB $L_{Aeq}(24h)$

- 55 - 60
- 60 - 65
- 65 - 70
- > 70

PPFs Altered

dB $L_{Aeq}(24h)$

- < 64
- 64 - 67

Other Buildings: ■

Road: —

Assessment Area:

This map contains data derived in part or wholly from sources other than those party to the Supporting Growth Alliance, and therefore, no representations or warranties are made by those party to the Supporting Growth Alliance as to the accuracy or completeness of this information.

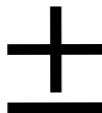
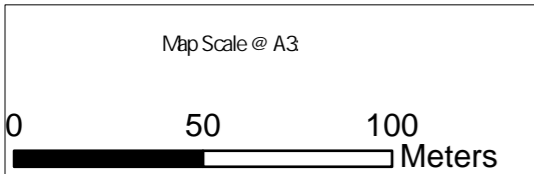
Map intended for distribution as a PDF document
Scale may be incorrect when printed.

Contains information sourced from LINZ. Crown Copyright Reserved.

Unitary plan data sourced from Auckland Council published web services.
Legend information can be viewed on Auckland Council unitary plan viewer.

Linework shown on this plan is conceptual only.
Not to be used for construction.

Auckland Council, LINZ, Esri Community Maps Contributors, LINZ, Esri, HERE, Garmin, Foursquare, METI/NASA, USGS



Revision	Author	Verified	Approved	Date
1	DA	SJ	CD	22/11/22

Title:

Supporting Growth
NoR R3 - Do Nothing Road Traffic Noise

Client: Supporting Growth

Project: North West Package



Discipline: GIS

Drawing No:



Noise Level	PPFs Altered
dB $L_{Aeq}(24h)$	dB $L_{Aeq}(24h)$
55 - 60	< 64
60 - 65	64 - 67
65 - 70	Other Buildings
> 70	Road
	Assessment Area

This map contains data derived in part or wholly from sources other than those party to the Supporting Growth Alliance, and therefore, no representations or warranties are made by those party to the Supporting Growth Alliance as to the accuracy or completeness of this information.

Map intended for distribution as a PDF document
Scale may be incorrect when printed.

Contains information sourced from LINZ. Crown Copyright Reserved.

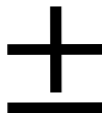
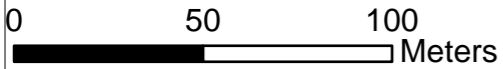
Unitary plan data sourced from Auckland Council published web services.
Legend information can be viewed on Auckland Council unitary plan viewer.

Linework shown on this plan is conceptual only.
Not to be used for construction.

Auckland Council, LINZ, Esri Community Maps Contributors, LINZ, Esri, HERE, Garmin, Foursquare, MET/NAASA, USGS

-161

Map Scale @ A3



Revision	Author	Verified	Approved	Date
1	DA	SJ	CD	22/11/22

Title:

Supporting Growth NoR R3 - Do Nothing Road Traffic Noise

Client

Supporting Growth

Project

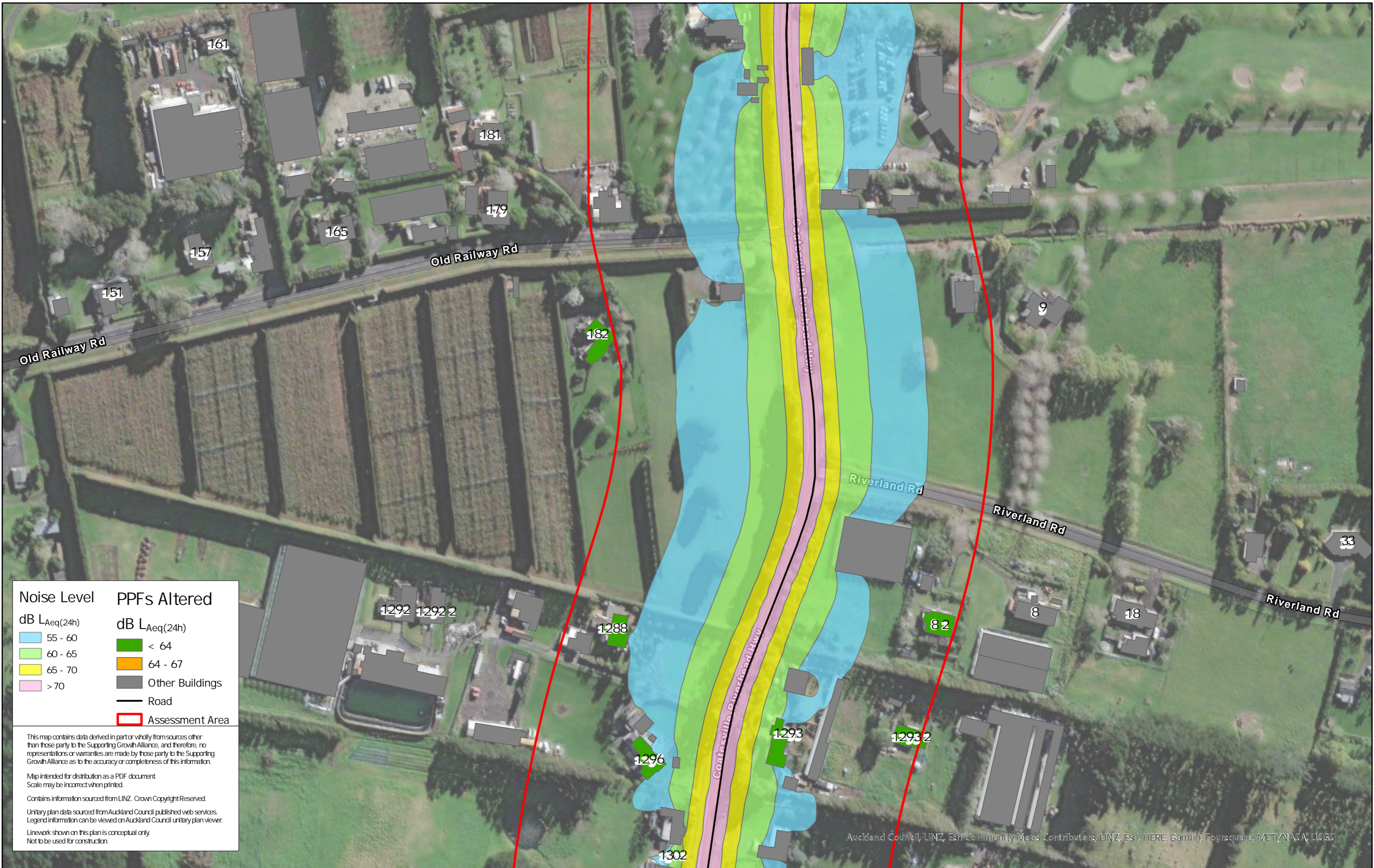
North West Package



Discipline:

GIS

Drawing No:



Noise Level	PPFs Altered
dB $L_{Aeq(24h)}$	dB $L_{Aeq(24h)}$
55 - 60	< 64
60 - 65	64 - 67
65 - 70	Other Buildings
> 70	Road
	Assessment Area

This map contains data derived in part or wholly from sources other than those party to the Supporting Growth Alliance, and therefore, no representations or warranties are made by those party to the Supporting Growth Alliance as to the accuracy or completeness of this information.

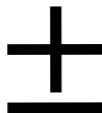
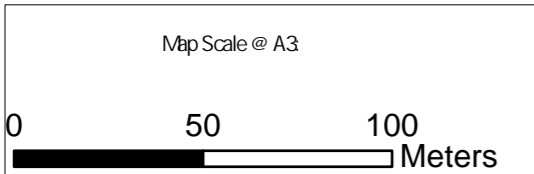
Map intended for distribution as a PDF document
Scale may be incorrect when printed.

Contains information sourced from LINZ. Crown Copyright Reserved.

Unitary plan data sourced from Auckland Council published web services.
Legend information can be viewed on Auckland Council unitary plan viewer.

Linework shown on this plan is conceptual only.
Not to be used for construction.

Auckland Council, LINZ, Esri Community Maps Contributors, LINZ, Esri, HERE, Garmin, Foursquare, METI/NASA, USGS



Revision	Author	Verified	Approved	Date
1	DA	SJ	CD	22/11/22

Title: **Supporting Growth**
NoR R3 - Do Nothing Road Traffic Noise

Client: Supporting Growth

Project: North West Package



Discipline: GIS

Drawing No:



Noise Level	PPFs Altered
dB $L_{Aeq}(24h)$	dB $L_{Aeq}(24h)$
55 - 60	< 64
60 - 65	64 - 67
65 - 70	Other Buildings
> 70	Road
	Assessment Area

This map contains data derived in part or wholly from sources other than those party to the Supporting Growth Alliance, and therefore, no representations or warranties are made by those party to the Supporting Growth Alliance as to the accuracy or completeness of this information.

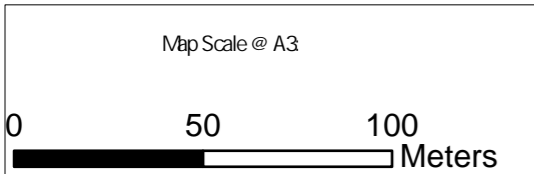
Map intended for distribution as a PDF document
Scale may be incorrect when printed.

Contains information sourced from LINZ. Crown Copyright Reserved.

Unitary plan data sourced from Auckland Council published web services.
Legend information can be viewed on Auckland Council unitary plan viewer.

Linework shown on this plan is conceptual only.
Not to be used for construction.

Auckland Council, LINZ, Esri Community Maps Contributors, LINZ, Esri, HERE, Garmin, Foursquare, METI/NASA, USGS



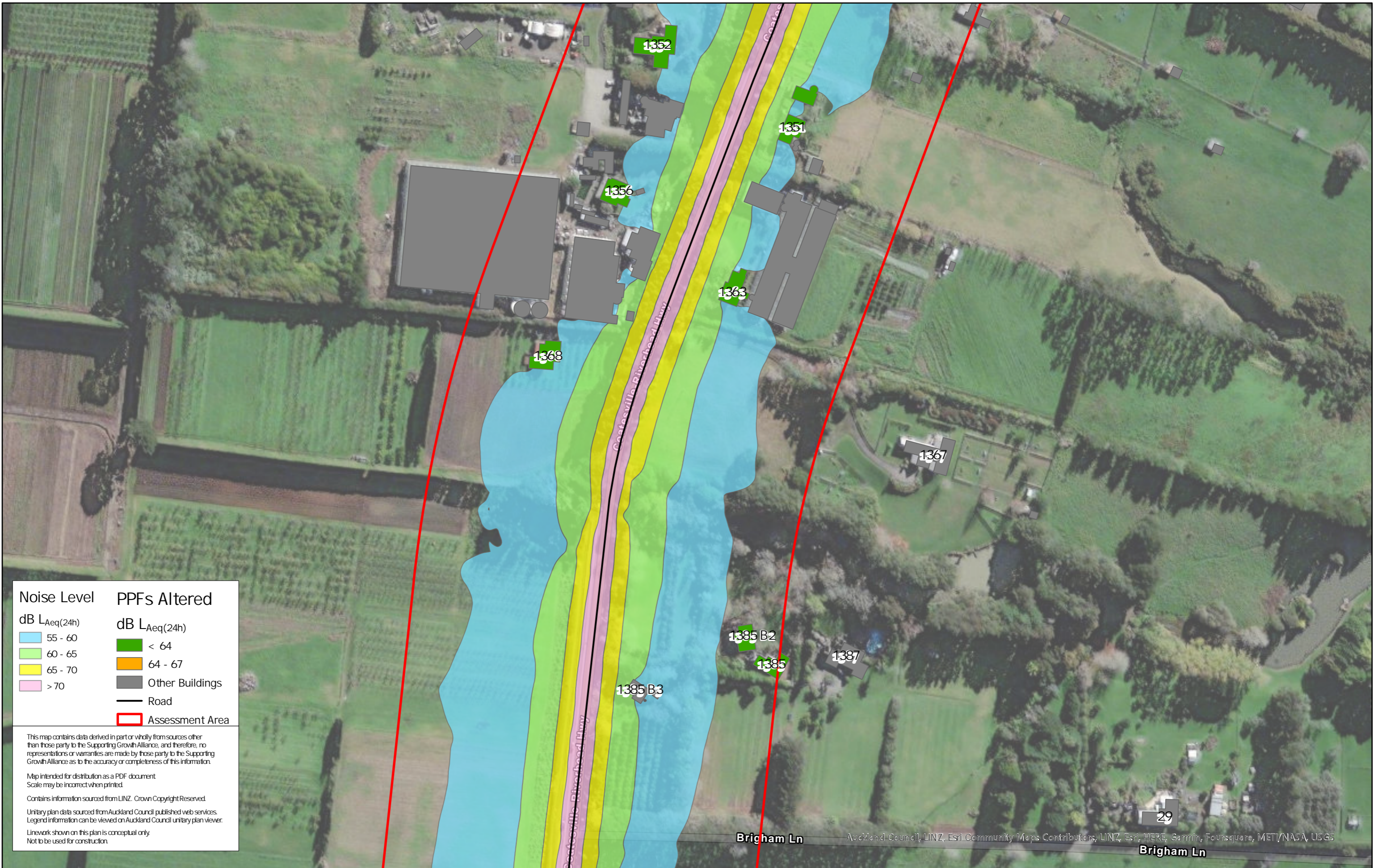
Revision	Author	Verified	Approved	Date	Title
1	DA	SJ	CD	22/11/22	

Supporting Growth
NoR R3 - Do Nothing Road Traffic Noise

Client: Supporting Growth
Project: North West Package



Discipline: GIS
Drawing No:



Noise Level	PPFs Altered
dB $L_{Aeq}(24h)$	dB $L_{Aeq}(24h)$
55 - 60	< 64
60 - 65	64 - 67
65 - 70	Other Buildings
> 70	Road
	Assessment Area

This map contains data derived in part or wholly from sources other than those party to the Supporting Growth Alliance, and therefore, no representations or warranties are made by those party to the Supporting Growth Alliance as to the accuracy or completeness of this information.

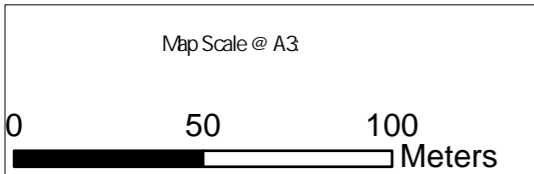
Map intended for distribution as a PDF document
Scale may be incorrect when printed.

Contains information sourced from LINZ. Crown Copyright Reserved.

Unitary plan data sourced from Auckland Council published web services.
Legend information can be viewed on Auckland Council unitary plan viewer.

Linework shown on this plan is conceptual only.
Not to be used for construction.

Auckland Council, LINZ, Esri, Community Maps Contributors, LINZ, Esri, HERE, Garmin, Foursquare, METI/NASA, USGS



Revision	Author	Verified	Approved	Date
1	DA	SJ	CD	22/11/22

Title: Supporting Growth
NoR R3 - Do Nothing Road Traffic Noise

Client: Supporting Growth
Project: North West Package



Discipline: GIS
Drawing No:



Noise Level	PPFs Altered
dB $L_{Aeq(24h)}$	dB $L_{Aeq(24h)}$
55 - 60	< 64
60 - 65	64 - 67
65 - 70	Other Buildings
> 70	Road
	Assessment Area

This map contains data derived in part or wholly from sources other than those party to the Supporting Growth Alliance, and therefore, no representations or warranties are made by those party to the Supporting Growth Alliance as to the accuracy or completeness of this information.

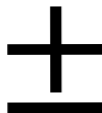
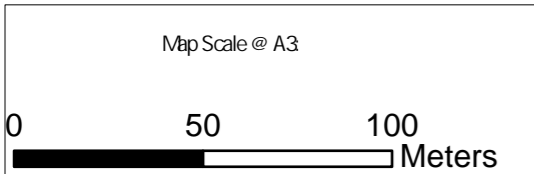
Map intended for distribution as a PDF document
Scale may be incorrect when printed.

Contains information sourced from LINZ. Crown Copyright Reserved.

Unitary plan data sourced from Auckland Council published web services.
Legend information can be viewed on Auckland Council unitary plan viewer.

Linework shown on this plan is conceptual only.
Not to be used for construction.

Auckland Council, LINZ, Esri Community Maps Contributors, LINZ, Esri, HERE, Garmin, Foursquare, METI/NASA, USGS



Revision	Author	Verified	Approved	Date
1	DA	SJ	CD	22/11/22

Title: Supporting Growth
NoR R3 - Do Nothing Road Traffic Noise

Client: Supporting Growth
Project: North West Package



Discipline: GIS
Drawing No:



Noise Level	PPFs Altered
55 - 60	< 64
60 - 65	64 - 67
65 - 70	> 67
> 70	Other Buildings
	Road
	Assessment Area

This map contains data derived in part or wholly from sources other than those party to the Supporting Growth Alliance, and therefore, no representations or warranties are made by those party to the Supporting Growth Alliance as to the accuracy or completeness of this information.

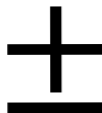
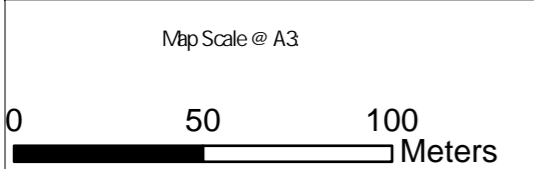
Map intended for distribution as a PDF document
Scale may be incorrect when printed.

Contains information sourced from LINZ. Crown Copyright Reserved.

Unitary plan data sourced from Auckland Council published web services. Legend information can be viewed on Auckland Council unitary plan viewer.

Linework shown on this plan is conceptual only.
Not to be used for construction.

Auckland Council, LINZ, Esri Community Maps Contributors, LINZ, Esri, HERE, Garmin, Foursquare, MITI, NASA, USGS



Revision	Author	Verified	Approved	Date
1	DK	SJ	CD	22/11/22

Title: **Supporting Growth**
NoR R3 - Do Minimum Road Traffic Noise

Client: Supporting Growth

Project: North West Package



Discipline: GIS

Drawing No:



Noise Level	PPFs Altered
55 - 60	< 64
60 - 65	64 - 67
65 - 70	> 67
> 70	Other Buildings
	Road
	Assessment Area

This map contains data derived in part or wholly from sources other than those party to the Supporting Growth Alliance, and therefore, no representations or warranties are made by those party to the Supporting Growth Alliance as to the accuracy or completeness of this information.

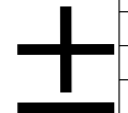
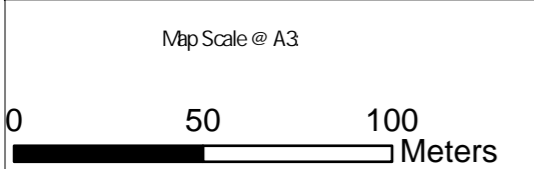
Map intended for distribution as a PDF document
Scale may be incorrect when printed.

Contains information sourced from LINZ. Crown Copyright Reserved.

Unitary plan data sourced from Auckland Council published web services. Legend information can be viewed on Auckland Council unitary plan viewer.

Linework shown on this plan is conceptual only.
Not to be used for construction.

Auckland Council, LINZ, Esri Community Maps Contributors, LINZ, Esri, HERE, Garmin, Foursquare, MET/NASA, USGS



Revision	Author	Verified	Approved	Date
1	DK	SJ	CD	22/11/22

Title: Supporting Growth
NoR R3 - Do Minimum Road Traffic Noise

Client: Supporting Growth
Project: North West Package



Discipline: GIS
Drawing No:



Noise Level	PPFs Altered
55 - 60	< 64
60 - 65	64 - 67
65 - 70	> 67
> 70	Other Buildings
	Road
	Assessment Area

This map contains data derived in part or wholly from sources other than those party to the Supporting Growth Alliance, and therefore, no representations or warranties are made by those party to the Supporting Growth Alliance as to the accuracy or completeness of this information.

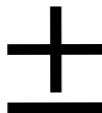
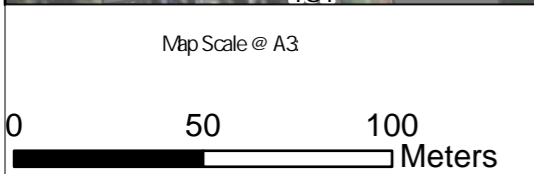
Map intended for distribution as a PDF document
Scale may be incorrect when printed.

Contains information sourced from LINZ. Crown Copyright Reserved.

Unitary plan data sourced from Auckland Council published web services.
Legend information can be viewed on Auckland Council unitary plan viewer.

Linework shown on this plan is conceptual only.
Not to be used for construction.

Auckland Council, LINZ, Esri Community Maps Contributors, LINZ, Esri, HERE, Garmin, Foursquare, MET/NASA, USGS



Revision	Author	Verified	Approved	Date
1	DK	SJ	CD	22/11/22

Title: **Supporting Growth
NoR R3 - Do Minimum Road Traffic Noise**

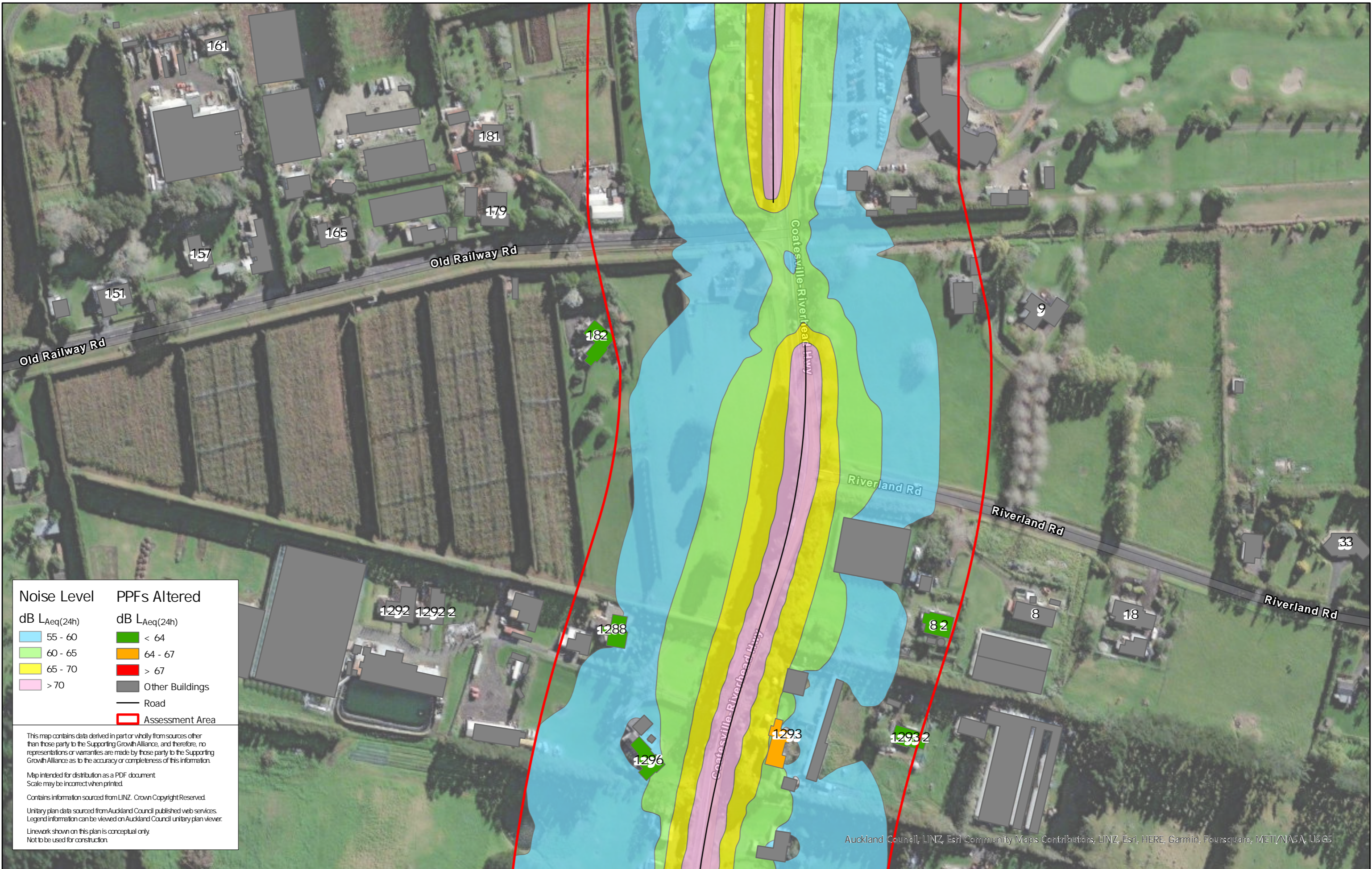
Client: Supporting Growth

Project: North West Package



Discipline: GIS

Drawing No:



Noise Level	PPFs Altered
dB $L_{Aeq}(24h)$	dB $L_{Aeq}(24h)$
55 - 60	< 64
60 - 65	64 - 67
65 - 70	> 67
> 70	Other Buildings
	Road
	Assessment Area

This map contains data derived in part or wholly from sources other than those party to the Supporting Growth Alliance, and therefore, no representations or warranties are made by those party to the Supporting Growth Alliance as to the accuracy or completeness of this information.

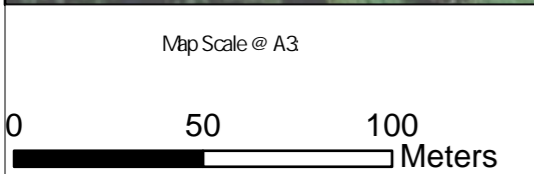
Map intended for distribution as a PDF document
Scale may be incorrect when printed.

Contains information sourced from LINZ. Crown Copyright Reserved.

Unitary plan data sourced from Auckland Council published web services.
Legend information can be viewed on Auckland Council unitary plan viewer.

Linework shown on this plan is conceptual only.
Not to be used for construction.

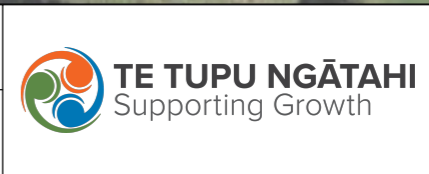
Auckland Council, LINZ, Esri Community Maps Contributors, LINZ, Esri, HERE, Garmin, Foursquare, METI/NASA, USGS



Revision	Author	Verified	Approved	Date	Title
1	DK	SJ	CD	22/11/22	

Supporting Growth
NoR R3 - Do Minimum Road Traffic Noise

Client	Supporting Growth
Project	North West Package



Discipline:	GIS
Drawing No:	



Noise Level	PPFs Altered
55 - 60	< 64
60 - 65	64 - 67
65 - 70	> 67
> 70	Other Buildings
	Road
	Assessment Area

This map contains data derived in part or wholly from sources other than those party to the Supporting Growth Alliance, and therefore, no representations or warranties are made by those party to the Supporting Growth Alliance as to the accuracy or completeness of this information.

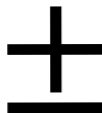
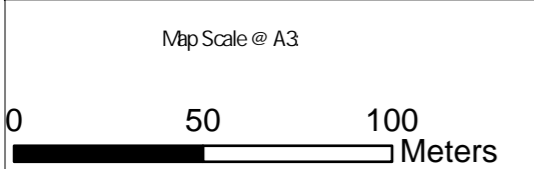
Map intended for distribution as a PDF document
Scale may be incorrect when printed.

Contains information sourced from LINZ. Crown Copyright Reserved.

Unitary plan data sourced from Auckland Council published web services. Legend information can be viewed on Auckland Council unitary plan viewer.

Linework shown on this plan is conceptual only.
Not to be used for construction.

Auckland Council, LINZ, Esri Community Maps Contributors, LINZ, Esri, HERE, Garmin, Foursquare, METI/NASA, USGS



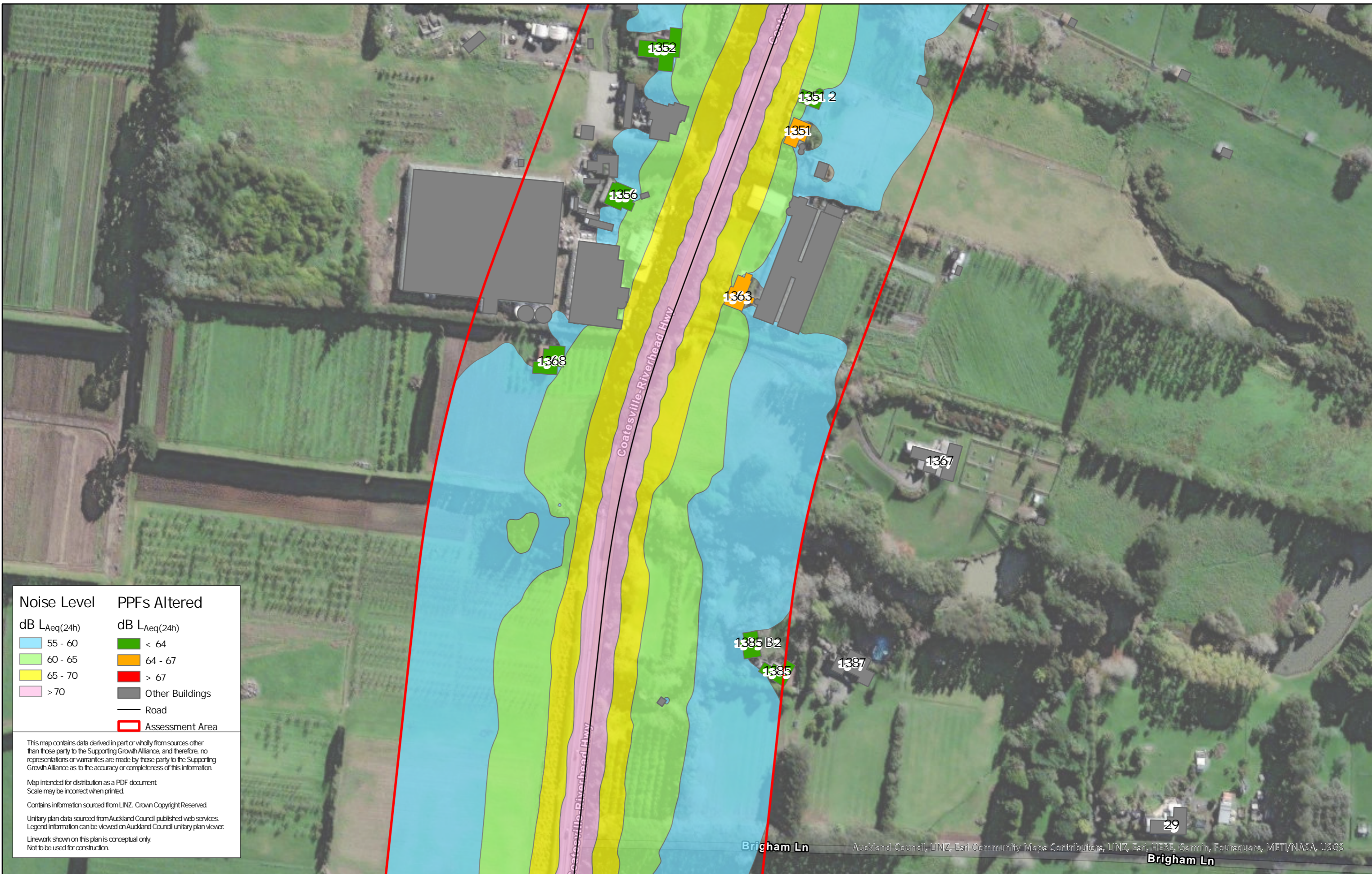
Revision	Author	Verified	Approved	Date	Title
1	DK	SJ	CD	22/11/22	

Supporting Growth
NoR R3 - Do Minimum Road Traffic Noise

Client	Supporting Growth
Project	North West Package



Discipline:	GIS
Drawing No:	



Noise Level	PPFs Altered
55 - 60	< 64
60 - 65	64 - 67
65 - 70	> 67
> 70	Other Buildings
	Road
	Assessment Area

This map contains data derived in part or wholly from sources other than those party to the Supporting Growth Alliance, and therefore, no representations or warranties are made by those party to the Supporting Growth Alliance as to the accuracy or completeness of this information.

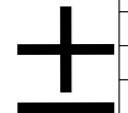
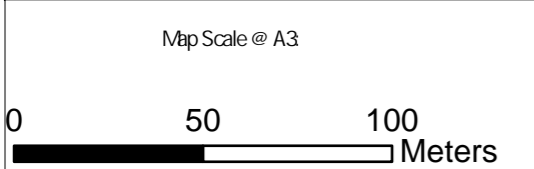
Map intended for distribution as a PDF document
Scale may be incorrect when printed.

Contains information sourced from LINZ. Crown Copyright Reserved.

Unitary plan data sourced from Auckland Council published web services.
Legend information can be viewed on Auckland Council unitary plan viewer.

Linework shown on this plan is conceptual only.
Not to be used for construction.

Auckland Council, LINZ, Esri, Community Maps Contributors, LINZ, Esri, HERE, Garmin, Pousquare, METI/NASA, USGS



Revision	Author	Verified	Approved	Date
1	DK	SJ	CD	22/11/22

Title: **Supporting Growth**
NoR R3 - Do Minimum Road Traffic Noise

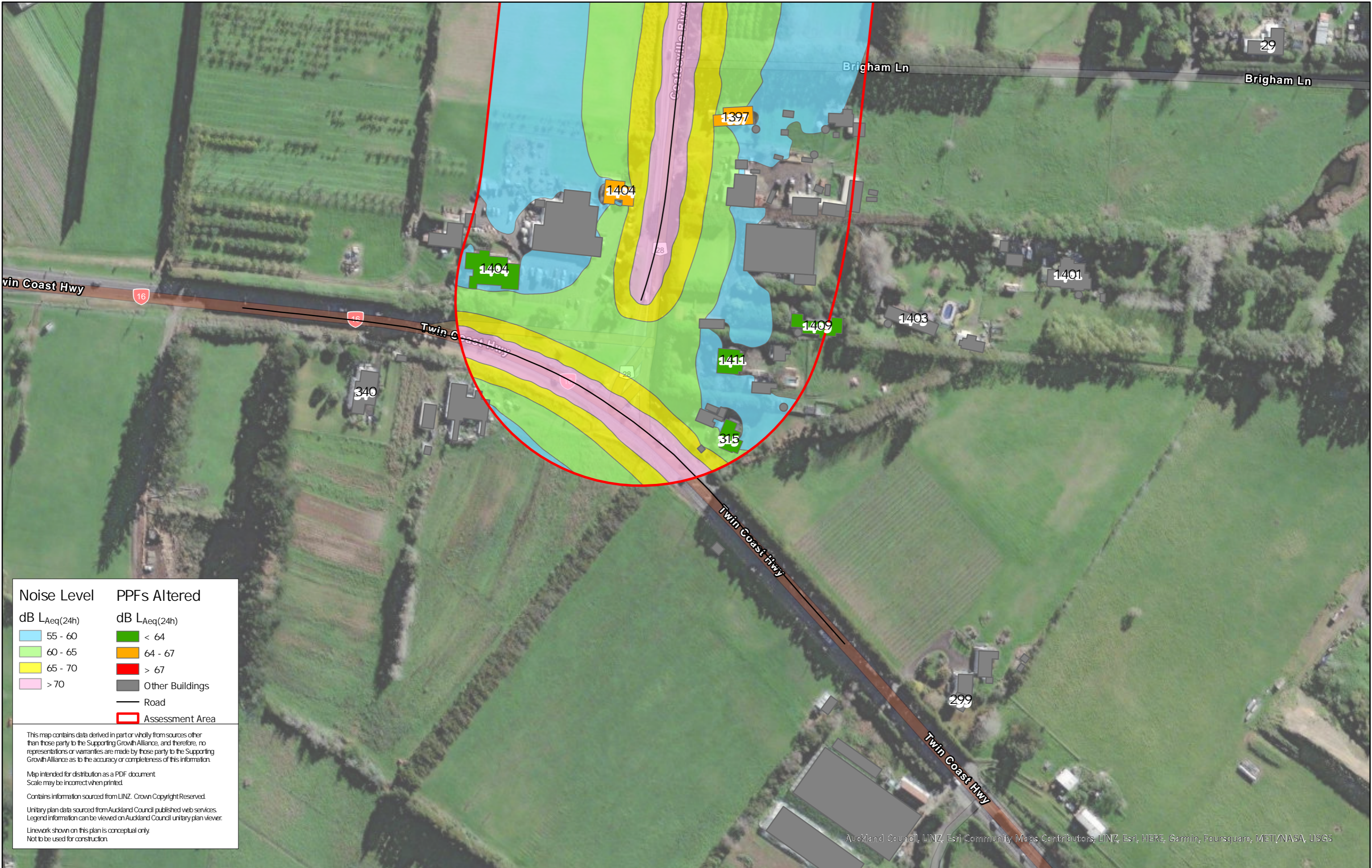
Client: Supporting Growth

Project: North West Package



Discipline: GIS

Drawing No:



Noise Level	PPFs Altered
55 - 60	< 64
60 - 65	64 - 67
65 - 70	> 67
> 70	Other Buildings
	Road
	Assessment Area

This map contains data derived in part or wholly from sources other than those party to the Supporting Growth Alliance, and therefore, no representations or warranties are made by those party to the Supporting Growth Alliance as to the accuracy or completeness of this information.

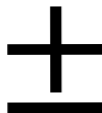
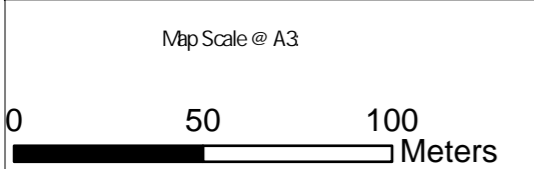
Map intended for distribution as a PDF document
Scale may be incorrect when printed.

Contains information sourced from LINZ. Crown Copyright Reserved.

Unitary plan data sourced from Auckland Council published web services.
Legend information can be viewed on Auckland Council unitary plan viewer.

Linework shown on this plan is conceptual only.
Not to be used for construction.

Auckland Council, LINZ, Esri Community Maps Contributors, LINZ, Esri, HERE, Garmin, Foursquare, METI/NASA, USGS



Revision	Author	Verified	Approved	Date	Title
1	DK	SJ	CD	22/11/22	

Supporting Growth
NoR R3 - Do Minimum Road Traffic Noise

Client: Supporting Growth
Project: North West Package



Discipline: GIS
Drawing No:



Noise_Level	PPFs Altered
55 - 60	64 dB < LAeq(24h)
60 - 65	Other Buildings
65 - 70	Road
> 70	Assessment Area

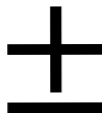
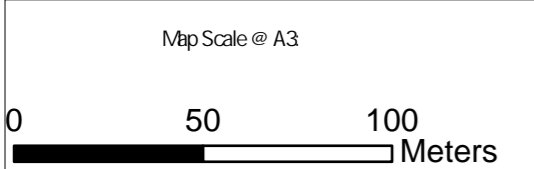
This map contains data derived in part or wholly from sources other than those party to the Supporting Growth Alliance, and therefore, no representations or warranties are made by those party to the Supporting Growth Alliance as to the accuracy or completeness of this information.

Map intended for distribution as a PDF document
Scale may be incorrect when printed.

Contains information sourced from LINZ. Crown Copyright Reserved.

Unitary plan data sourced from Auckland Council published web services. Legend information can be viewed on Auckland Council unitary plan viewer.

Linework shown on this plan is conceptual only.
Not to be used for construction.



Revision	Author	Verified	Approved	Date
1	DA	SJ	CD	22/11/22

Title: **Supporting Growth**
NoR R3 - Mitigated Road Traffic Noise

Client: Supporting Growth

Project: North West Package



Discipline: GIS

Drawing No:



Noise_Level	PPFs Altered
dB LAeq(24h)	dB LAeq(24h)
55 - 60	64 dB < LAeq(24h)
60 - 65	Other Buildings
65 - 70	Road
> 70	Assessment Area

This map contains data derived in part or wholly from sources other than those party to the Supporting Growth Alliance, and therefore, no representations or warranties are made by those party to the Supporting Growth Alliance as to the accuracy or completeness of this information.

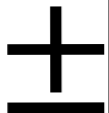
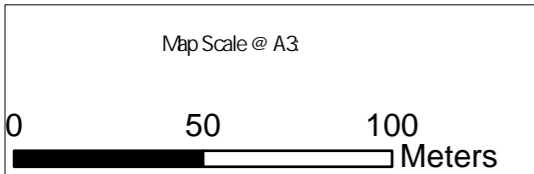
Map intended for distribution as a PDF document
Scale may be incorrect when printed.

Contains information sourced from LINZ. Crown Copyright Reserved.

Unitary plan data sourced from Auckland Council published web services.
Legend information can be viewed on Auckland Council unitary plan viewer.

Linework shown on this plan is conceptual only.
Not to be used for construction.

Auckland Council, LINZ, Esri Community Maps Contributors, LINZ, Esri, HERE, Garmin, Foursquare, METI/NASA, USGS



Revision	Author	Verified	Approved	Date
1	DA	SJ	CD	22/11/22

Title: **Supporting Growth**
NoR R3 - Mitigated Road Traffic Noise

Client: Supporting Growth

Project: North West Package



Discipline: GIS

Drawing No:



Noise_Level	PPFs Altered
dB $L_{Aeq}(24h)$	dB $L_{Aeq}(24h)$
55 - 60	64 dB < $L_{Aeq}(24h)$
60 - 65	Other Buildings
65 - 70	Road
> 70	Assessment Area

This map contains data derived in part or wholly from sources other than those party to the Supporting Growth Alliance, and therefore, no representations or warranties are made by those party to the Supporting Growth Alliance as to the accuracy or completeness of this information.

Map intended for distribution as a PDF document
Scale may be incorrect when printed.

Contains information sourced from LINZ. Crown Copyright Reserved.

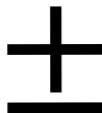
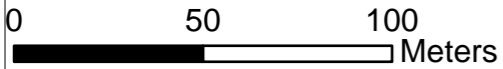
Unitary plan data sourced from Auckland Council published web services.
Legend information can be viewed on Auckland Council unitary plan viewer.

Linework shown on this plan is conceptual only.
Not to be used for construction.

Auckland Council, LINZ, Esri Community Maps Contributors, LINZ, Esri, HERE, Garmin, Foursquare, MET/NAASA, USGS

-161

Map Scale @ A3



Revision	Author	Verified	Approved	Date
1	DA	SJ	CD	22/11/22

Title:

Supporting Growth NoR R3 - Mitigated Road Traffic Noise

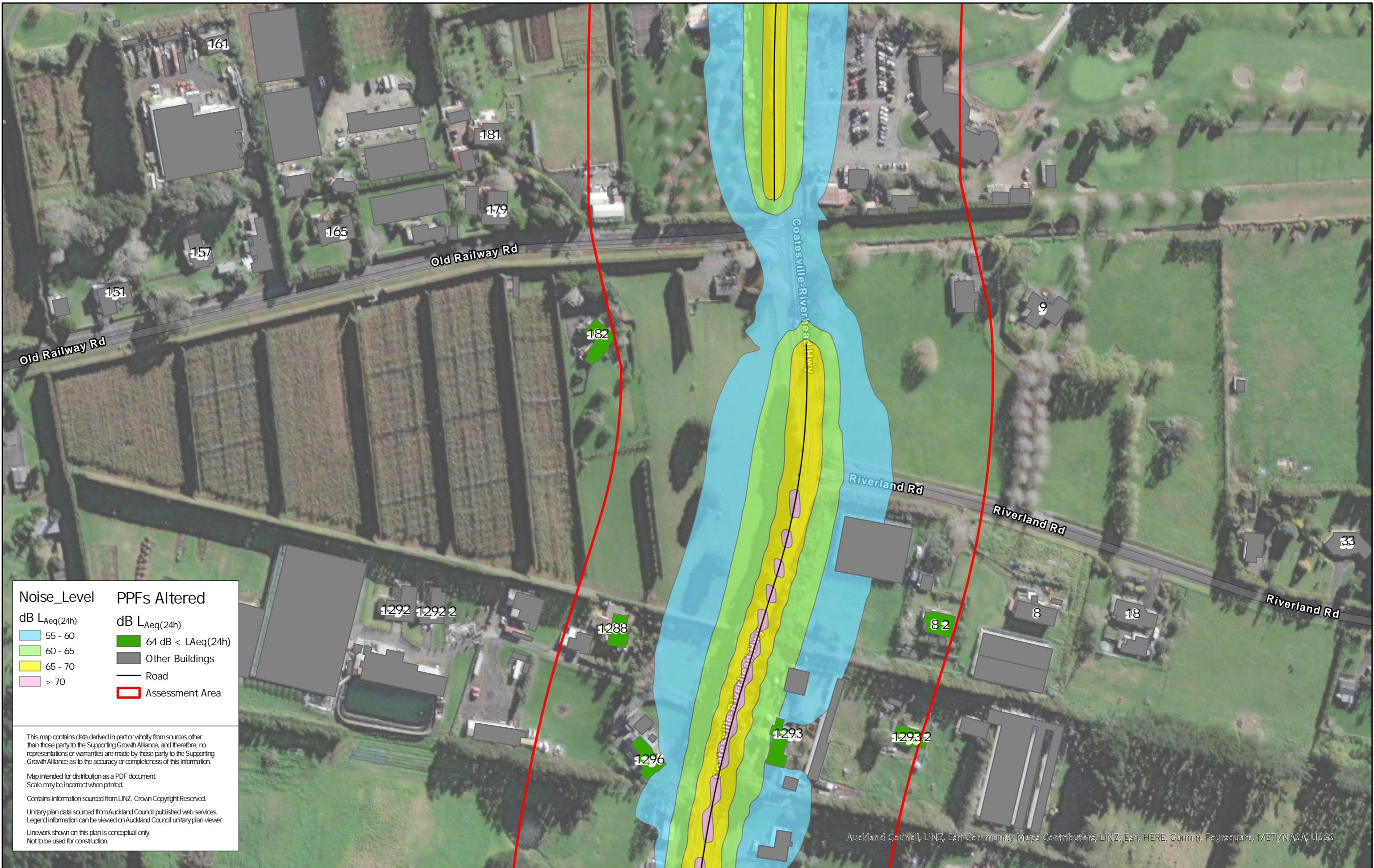
Client: Supporting Growth

Project: North West Package



Discipline: GIS

Drawing No:



Noise_Level	PPFs Altered
55 - 60	64 dB < LAeq(24h)
60 - 65	Other Buildings
65 - 70	Road
> 70	Assessment Area

This map contains data derived in part or wholly from sources other than those party to the Supporting Growth Alliance, and therefore, no representations or warranties are made by those party to the Supporting Growth Alliance as to the accuracy or completeness of this information.

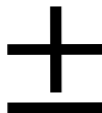
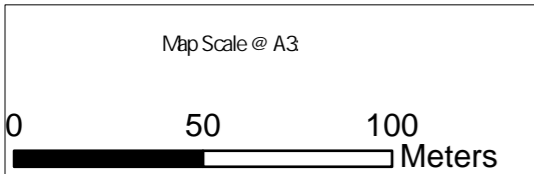
Map intended for distribution as a PDF document
Scale may be incorrect when printed.

Contains information sourced from LINZ. Crown Copyright Reserved.

Unitary plan data sourced from Auckland Council published web services.
Legend information can be viewed on Auckland Council unitary plan viewer.

Linework shown on this plan is conceptual only.
Not to be used for construction.

Auckland Council, LINZ, Esri Community Maps Contributors, LINZ, Esri, HERE, Garmin, Foursquare, METI/NASA, USGS



Revision	Author	Verified	Approved	Date
1	DA	SJ	CD	22/11/22

Title: **Supporting Growth**
NoR R3 - Mitigated Road Traffic Noise

Client: Supporting Growth

Project: North West Package



Discipline: GIS

Drawing No:



Noise_Level	PPFs Altered
dB L _{Aeq} (24h)	dB L _{Aeq} (24h)
55 - 60	64 dB < L _{Aeq} (24h)
60 - 65	Other Buildings
65 - 70	Road
> 70	Assessment Area

This map contains data derived in part or wholly from sources other than those party to the Supporting Growth Alliance, and therefore, no representations or warranties are made by those party to the Supporting Growth Alliance as to the accuracy or completeness of this information.

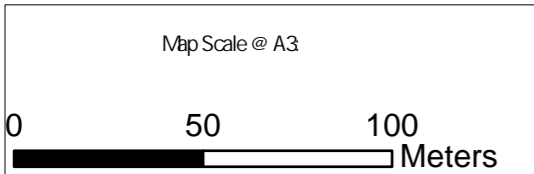
Map intended for distribution as a PDF document
Scale may be incorrect when printed.

Contains information sourced from LINZ. Crown Copyright Reserved.

Unitary plan data sourced from Auckland Council published web services.
Legend information can be viewed on Auckland Council unitary plan viewer.

Linework shown on this plan is conceptual only.
Not to be used for construction.

Auckland Council, LINZ, Esri Community Maps Contributors, LINZ, Esri, HERE, Garmin, Foursquare, METI/NASA, USGS



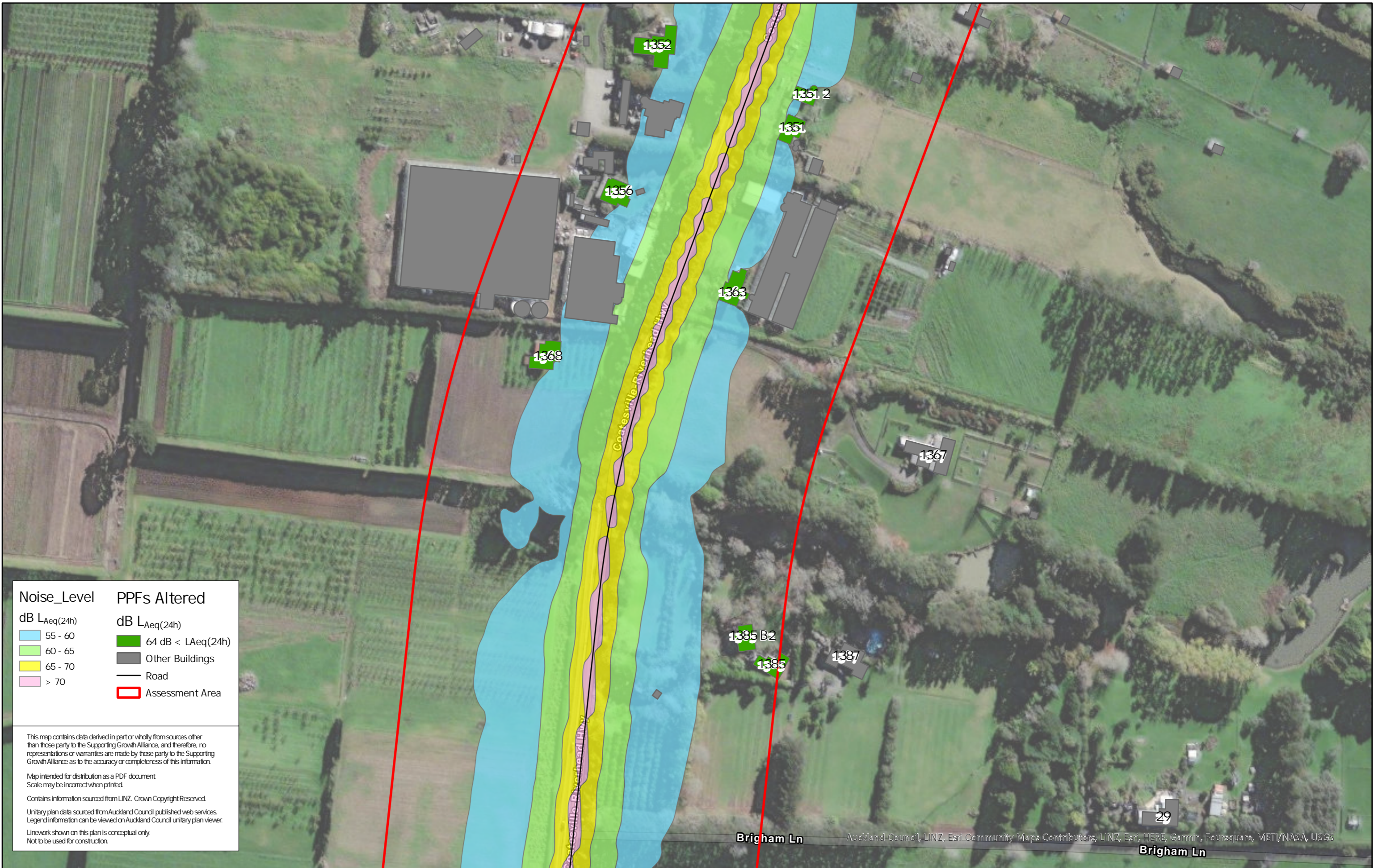
Revision	Author	Verified	Approved	Date	Title
1	DA	SJ	CD	22/11/22	

Supporting Growth
NoR R3 - Mitigated Road Traffic Noise

Client	Supporting Growth
Project	North West Package



Discipline:	GIS
Drawing No:	



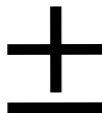
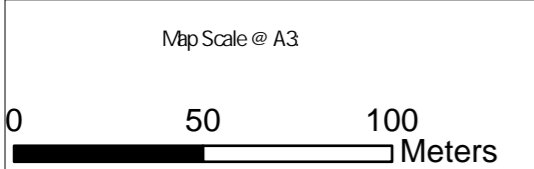
Noise_Level	PPFs Altered
55 - 60	64 dB < LAeq(24h)
60 - 65	Other Buildings
65 - 70	Road
> 70	Assessment Area

This map contains data derived in part or wholly from sources other than those party to the Supporting Growth Alliance, and therefore, no representations or warranties are made by those party to the Supporting Growth Alliance as to the accuracy or completeness of this information.

Map intended for distribution as a PDF document
Scale may be incorrect when printed.

Contains information sourced from LINZ. Crown Copyright Reserved.
Unitary plan data sourced from Auckland Council published web services. Legend information can be viewed on Auckland Council unitary plan viewer.
Linework shown on this plan is conceptual only.
Not to be used for construction.

Auckland Council, LINZ, Esri, Community Maps Contributors, LINZ, Esri, HERE, Garmin, Foursquare, METI/NASA, USGS



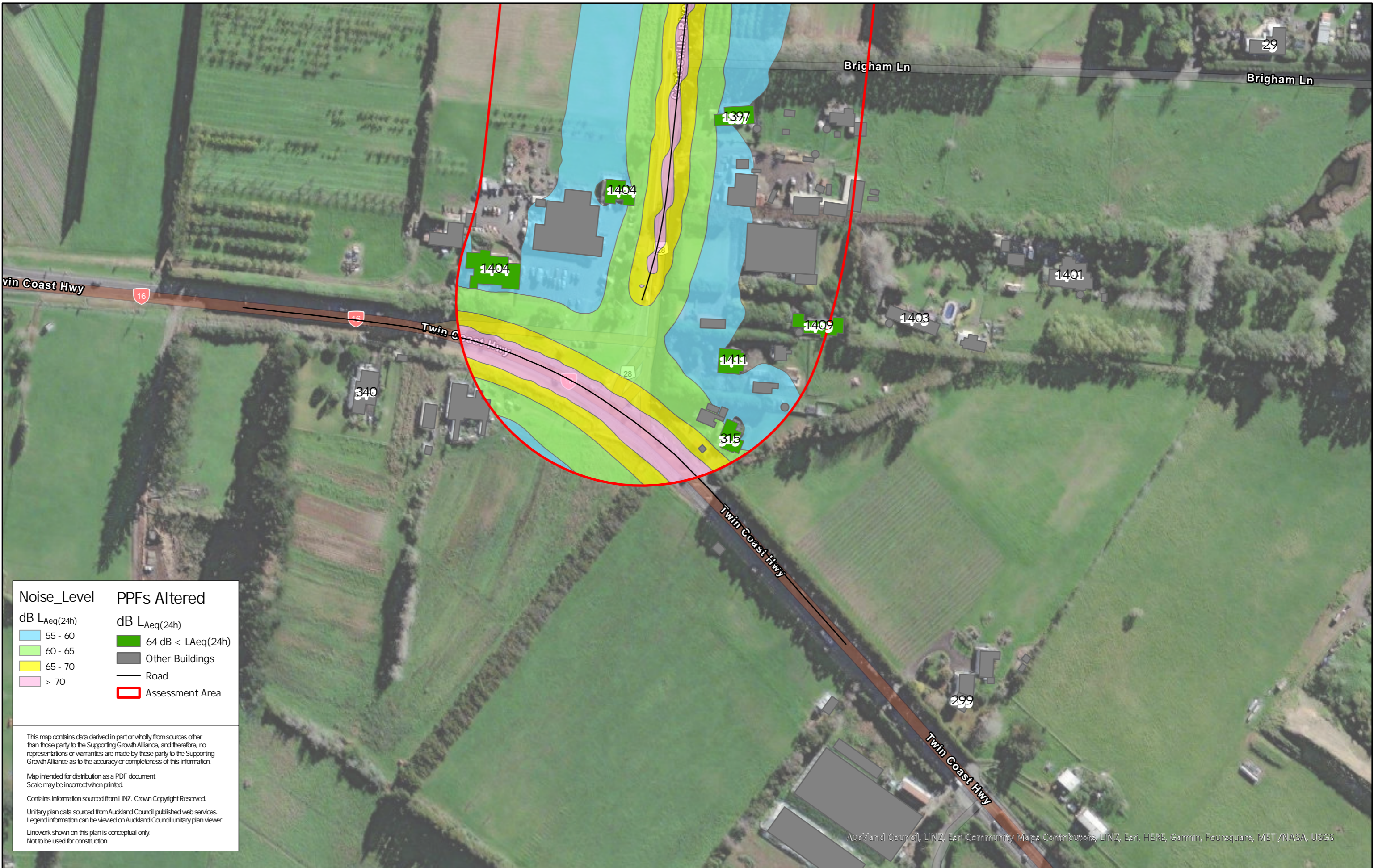
Revision	Author	Verified	Approved	Date
1	DA	SJ	CD	22/11/22

Title: **Supporting Growth
NoR R3 - Mitigated Road Traffic Noise**

Client: Supporting Growth
Project: North West Package



Discipline: GIS
Drawing No:



Noise_Level	PPFs Altered
55 - 60	64 dB < LAeq(24h)
60 - 65	Other Buildings
65 - 70	Road
> 70	Assessment Area

This map contains data derived in part or wholly from sources other than those party to the Supporting Growth Alliance, and therefore, no representations or warranties are made by those party to the Supporting Growth Alliance as to the accuracy or completeness of this information.

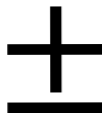
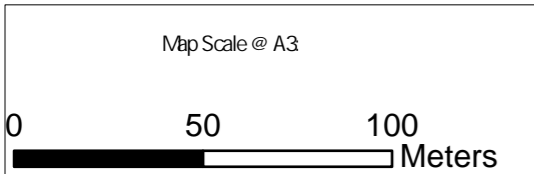
Map intended for distribution as a PDF document
Scale may be incorrect when printed.

Contains information sourced from LINZ. Crown Copyright Reserved.

Unitary plan data sourced from Auckland Council published web services.
Legend information can be viewed on Auckland Council unitary plan viewer.

Linework shown on this plan is conceptual only.
Not to be used for construction.

Auckland Council, LINZ, Esri Community Maps Contributors, LINZ, Esri, HERE, Garmin, Foursquare, METI/NASA, USGS



Revision	Author	Verified	Approved	Date	Title
1	DA	SJ	CD	22/11/22	

Supporting Growth
NoR R3 - Mitigated Road Traffic Noise

Client: Supporting Growth
Project: North West Package



Discipline: GIS
Drawing No: