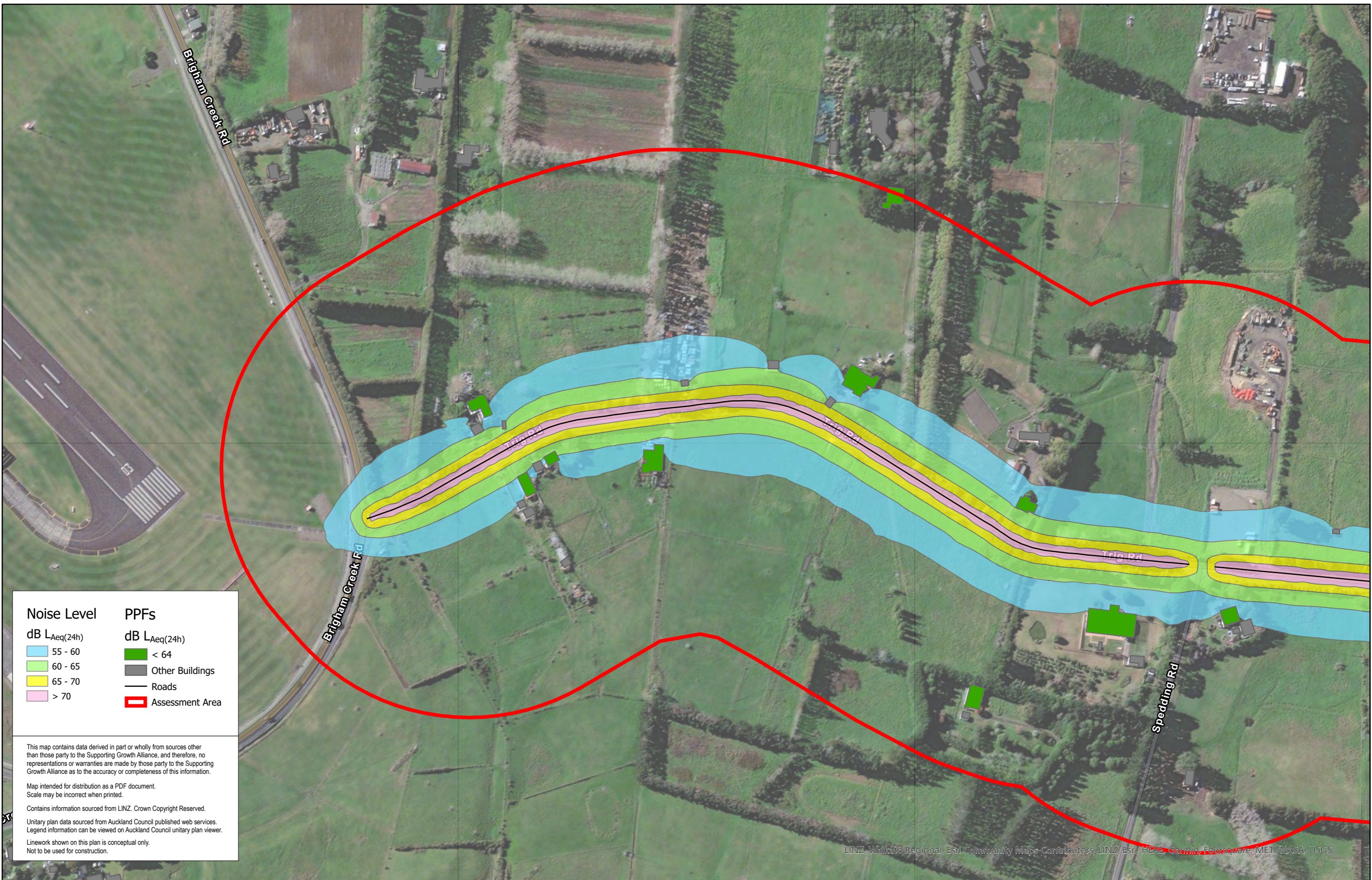


3 Appendix 3: Noise Contour Maps



| Noise Level | PPFs |
|---------------------------|---------------------------|
| dB L _{Aeq} (24h) | dB L _{Aeq} (24h) |
| 55 - 60 | < 64 |
| 60 - 65 | Other Buildings |
| 65 - 70 | Roads |
| > 70 | Assessment Area |

This map contains data derived in part or wholly from sources other than those party to the Supporting Growth Alliance, and therefore, no representations or warranties are made by those party to the Supporting Growth Alliance as to the accuracy or completeness of this information.

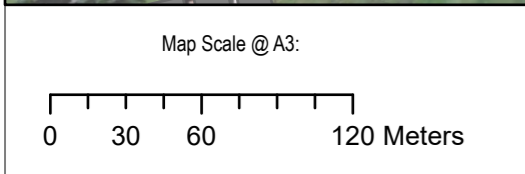
Map intended for distribution as a PDF document.
Scale may be incorrect when printed.

Contains information sourced from LINZ. Crown Copyright Reserved.

Unitary plan data sourced from Auckland Council published web services.
Legend information can be viewed on Auckland Council unitary plan viewer.

Linework shown on this plan is conceptual only.
Not to be used for construction.

LINZ, Waikato Regional, Esri Community Maps Contributors, LINZ, Esri, HERE, Garmin, FourSquare, METI/NASA, USGS

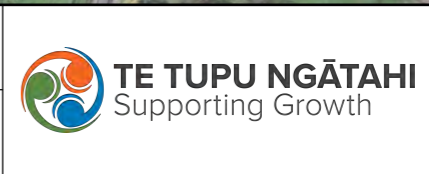


| Revision | Author | Verified | Approved | Date | Title: |
|----------|--------|----------|----------|----------|--|
| 1 | DA | SJ | CD | 23/11/22 | Supporting Growth NoR W1 - Existing Road Traffic Noise |
| | | | | | |

Supporting Growth
NoR W1 - Existing Road Traffic Noise

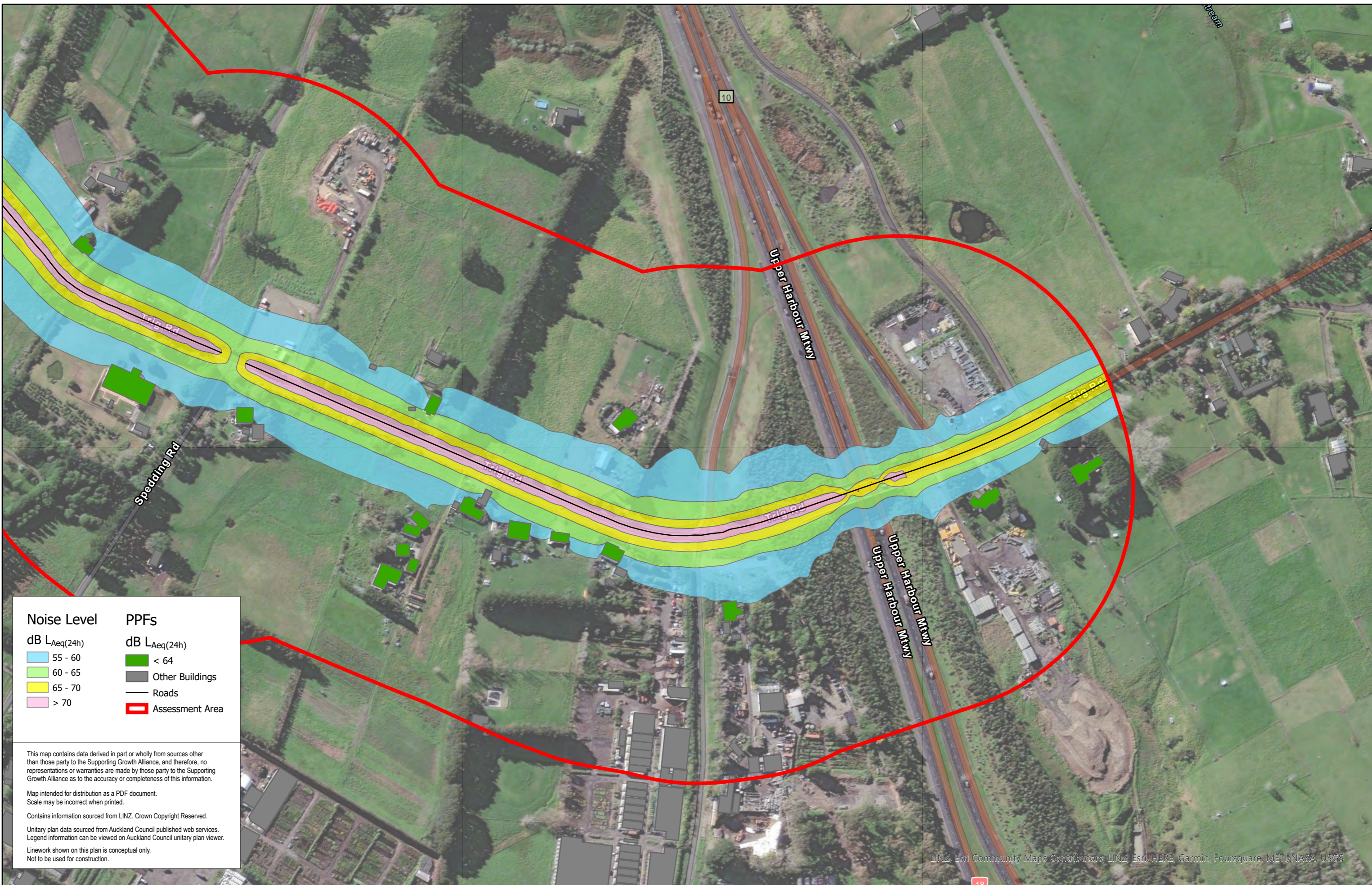
Client: **Supporting Growth**

Project: **North West Package**



Discipline: **GIS**

Drawing No: **SGA-NOR-W1-000**



| Noise Level | PPFs |
|-------------------|-------------------|
| dB $L_{Aeq}(24h)$ | dB $L_{Aeq}(24h)$ |
| 55 - 60 | < 64 |
| 60 - 65 | Other Buildings |
| 65 - 70 | Roads |
| > 70 | Assessment Area |

This map contains data derived in part or wholly from sources other than those party to the Supporting Growth Alliance, and therefore, no representations or warranties are made by those party to the Supporting Growth Alliance as to the accuracy or completeness of this information.

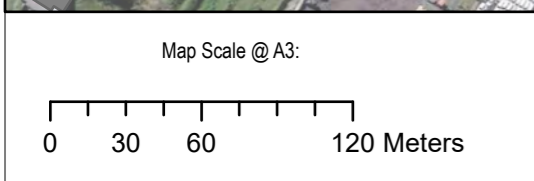
Map intended for distribution as a PDF document.
Scale may be incorrect when printed.

Contains information sourced from LINZ. Crown Copyright Reserved.

Unitary plan data sourced from Auckland Council published web services. Legend information can be viewed on Auckland Council unitary plan viewer.

Linework shown on this plan is conceptual only.
Not to be used for construction.

LINZ, Esri, Community Maps Contributors, LINZ, Esri, HERE, Garmin, Foursquare, METI/NASA, USGS



| Revision | Author | Verified | Approved | Date | Title: |
|----------|--------|----------|----------|----------|--|
| 1 | DA | SJ | CD | 23/11/22 | Supporting Growth NoR W1 - Existing Road Traffic Noise |
| | | | | | |

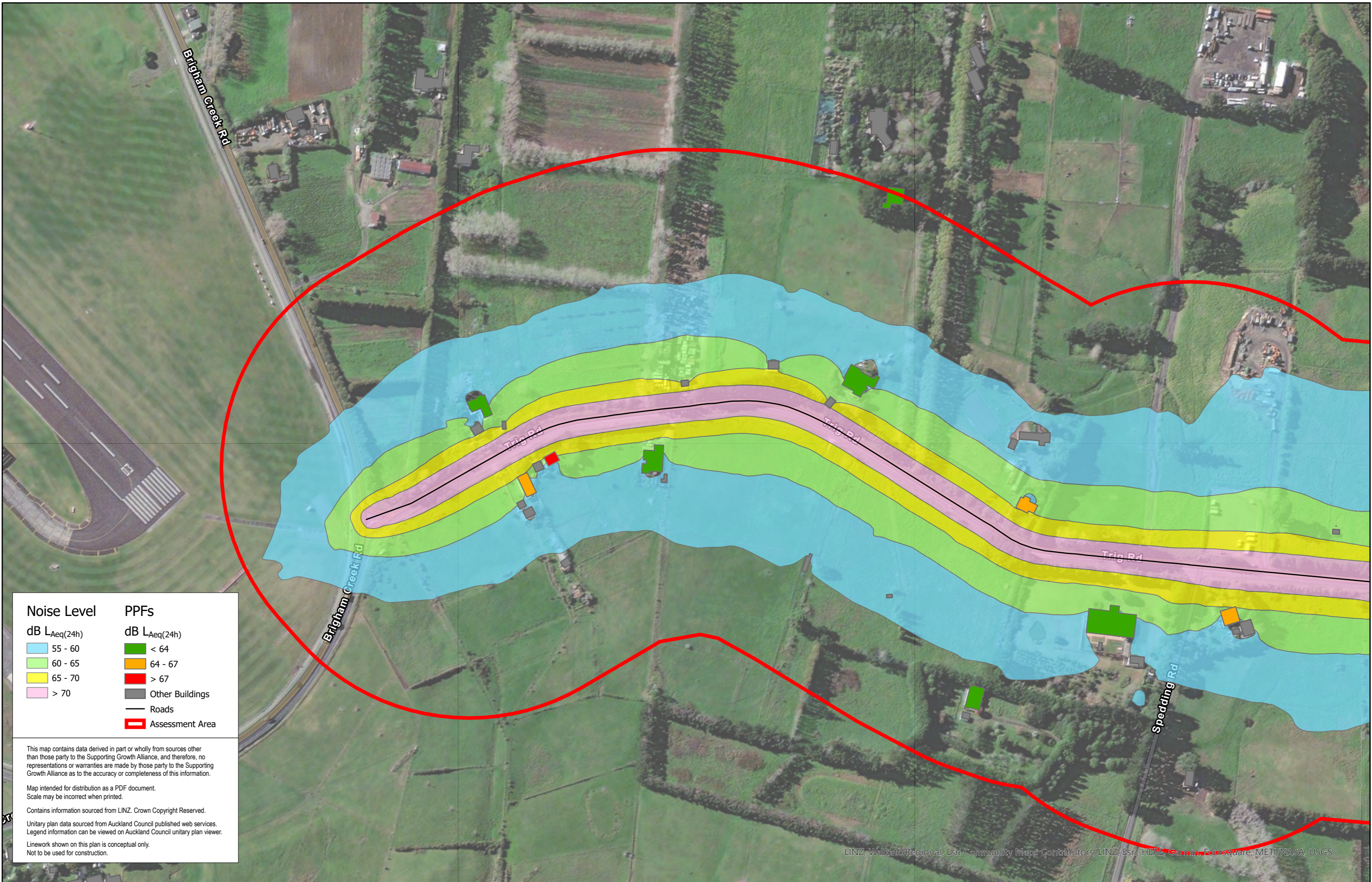
Client: Supporting Growth

Project: North West Package

Discipline: GIS

Drawing No: SGA-NOR-W1-000





| Noise Level | PPFs |
|---|---|
| dB LAeq(24h) | dB LAeq(24h) |
| 55 - 60 | < 64 |
| 60 - 65 | 64 - 67 |
| 65 - 70 | > 67 |
| > 70 | Other Buildings |
| | Roads |
| | Assessment Area |

This map contains data derived in part or wholly from sources other than those party to the Supporting Growth Alliance, and therefore, no representations or warranties are made by those party to the Supporting Growth Alliance as to the accuracy or completeness of this information.

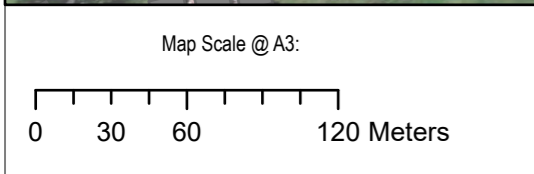
Map intended for distribution as a PDF document.
Scale may be incorrect when printed.

Contains information sourced from LINZ. Crown Copyright Reserved.

Unitary plan data sourced from Auckland Council published web services.
Legend information can be viewed on Auckland Council unitary plan viewer.

Linework shown on this plan is conceptual only.
Not to be used for construction.

LINZ, Waikato Regional, Esri Community Maps Contributors, LINZ, Esri, HERE, Garmin, DeLorme, Mapbox, Microsoft, Swatch, Sourcefire, Unacademy, USGS

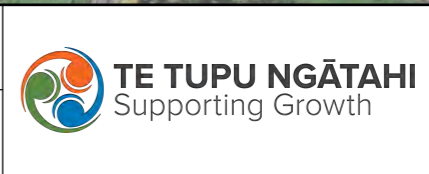


| Revision | Author | Verified | Approved | Date | Title: |
|----------|--------|----------|----------|----------|--|
| 1 | DA | SJ | CD | 23/11/22 | Supporting Growth NoR W1 - Do Nothing Road Traffic Noise |
| | | | | | |

Supporting Growth
NoR W1 - Do Nothing Road Traffic Noise

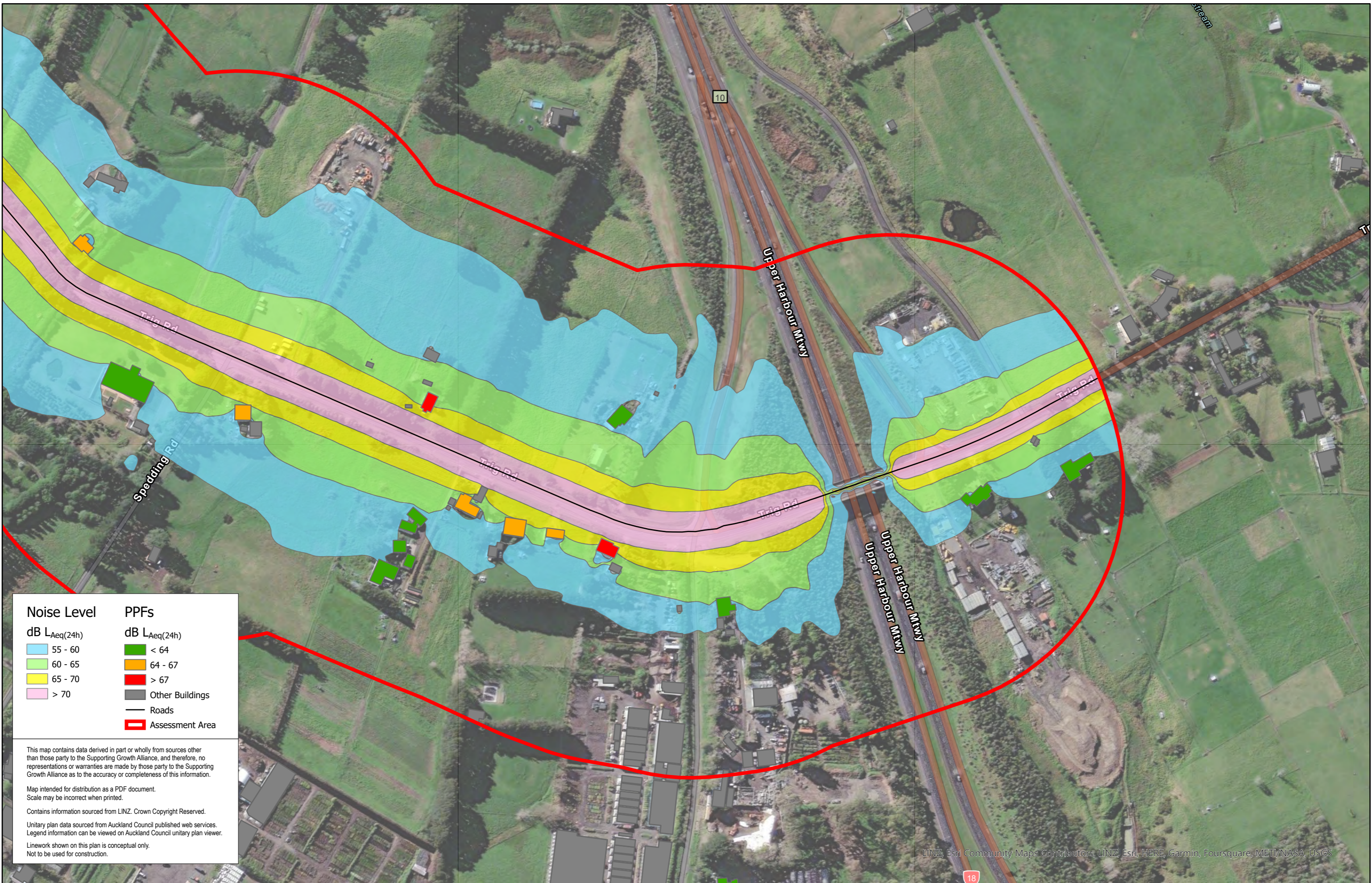
Client: **Supporting Growth**

Project: **North West Package**



Discipline: **GIS**

Drawing No: **SGA-NOR-W1-000**



| Noise Level | PPFs |
|-------------------|-------------------|
| dB $L_{Aeq}(24h)$ | dB $L_{Aeq}(24h)$ |
| 55 - 60 | < 64 |
| 60 - 65 | 64 - 67 |
| 65 - 70 | > 67 |
| > 70 | Other Buildings |
| | Roads |
| | Assessment Area |

This map contains data derived in part or wholly from sources other than those party to the Supporting Growth Alliance, and therefore, no representations or warranties are made by those party to the Supporting Growth Alliance as to the accuracy or completeness of this information.

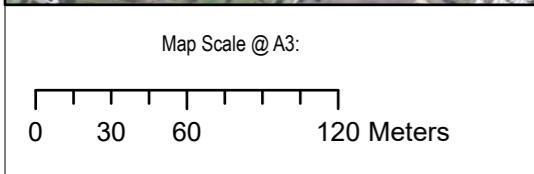
Map intended for distribution as a PDF document.
Scale may be incorrect when printed.

Contains information sourced from LINZ. Crown Copyright Reserved.

Unitary plan data sourced from Auckland Council published web services.
Legend information can be viewed on Auckland Council unitary plan viewer.

Linework shown on this plan is conceptual only.
Not to be used for construction.

LINZ, Esri, Community Maps Contributors, LINZ, Esri, HERE, Garmin, Foursquare, METI/NASA, USGS



| Revision | Author | Verified | Approved | Date | Title: |
|----------|--------|----------|----------|----------|--|
| 1 | DA | SJ | CD | 23/11/22 | Supporting Growth NoR W1 - Do Nothing Road Traffic Noise |
| | | | | | |

Supporting Growth
NoR W1 - Do Nothing Road Traffic Noise

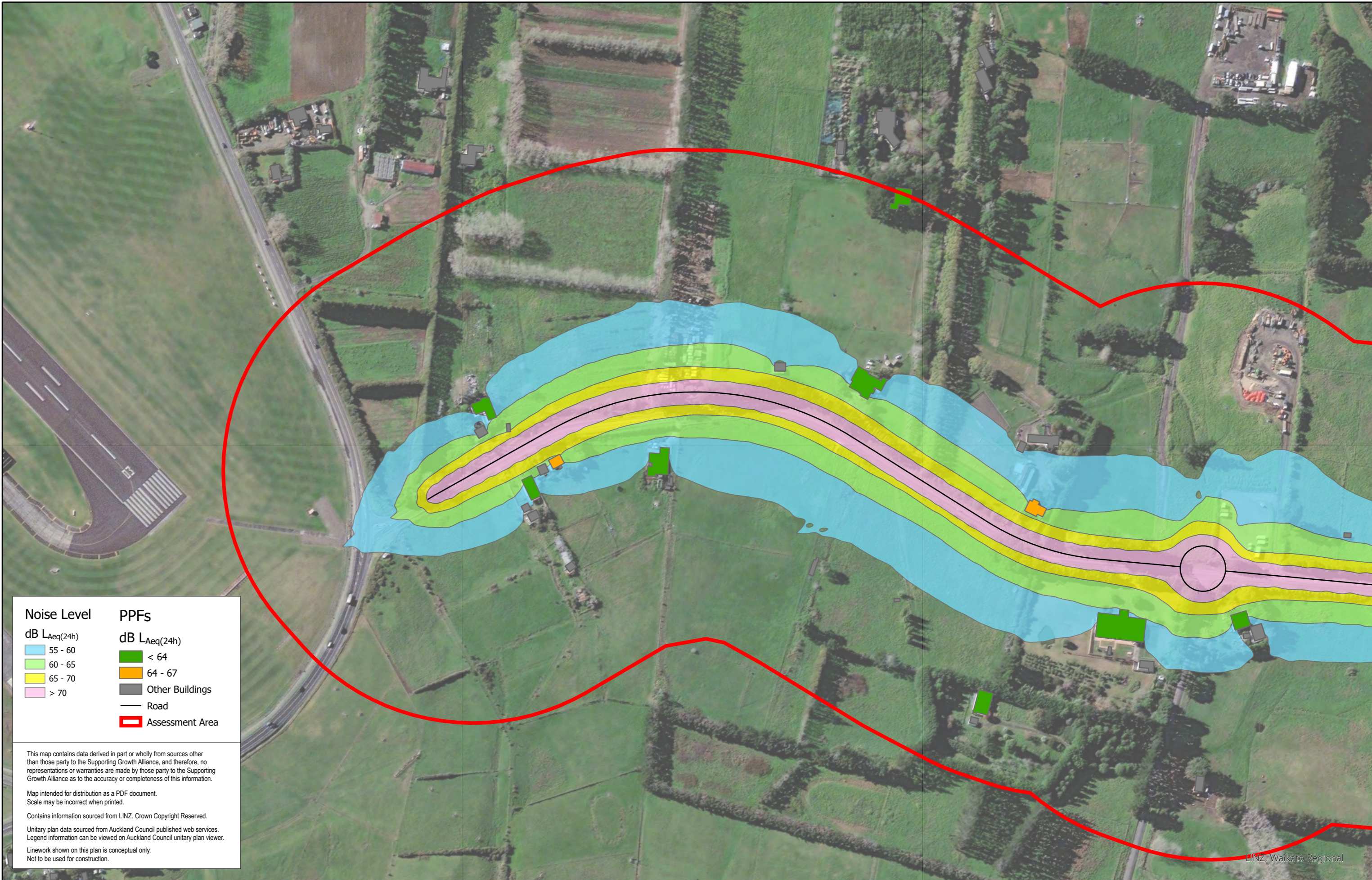
Client: Supporting Growth

Project: North West Package



Discipline: GIS

Drawing No: SGA-NOR-W1-000



Noise Level
dB LAeq(24h)

- 55 - 60
- 60 - 65
- 65 - 70
- > 70

PPFs
dB LAeq(24h)

- < 64
- 64 - 67
- Other Buildings
- Road
- Assessment Area

This map contains data derived in part or wholly from sources other than those party to the Supporting Growth Alliance, and therefore, no representations or warranties are made by those party to the Supporting Growth Alliance as to the accuracy or completeness of this information.

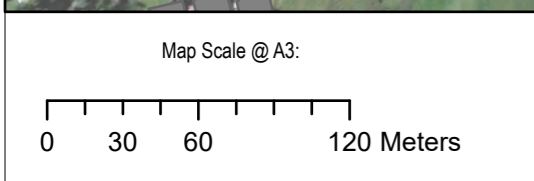
Map intended for distribution as a PDF document.
Scale may be incorrect when printed.

Contains information sourced from LINZ. Crown Copyright Reserved.

Unitary plan data sourced from Auckland Council published web services.
Legend information can be viewed on Auckland Council unitary plan viewer.

Linework shown on this plan is conceptual only.
Not to be used for construction.

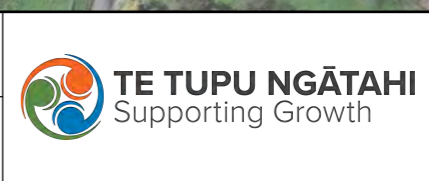
LINZ, Waikato Regional



| Revision | Author | Verified | Approved | Date |
|----------|--------|----------|----------|----------|
| 1 | DA | SJ | CD | 23/11/22 |

Supporting Growth
NoR W1 - Do Minimum Road Traffic Noise

Client: Supporting Growth
Project: North West Package



Discipline: GIS
Drawing No: SGA-NOR-W1-000



| Noise Level | | PPFs | |
|--|---------|--|-----------------|
| dB $L_{Aeq}(24h)$ | | dB $L_{Aeq}(24h)$ | |
| | 55 - 60 | | < 64 |
| | 60 - 65 | | 64 - 67 |
| | 65 - 70 | | Other Buildings |
| | > 70 | | Road |
| | | | Assessment Area |

This map contains data derived in part or wholly from sources other than those party to the Supporting Growth Alliance, and therefore, no representations or warranties are made by those party to the Supporting Growth Alliance as to the accuracy or completeness of this information.

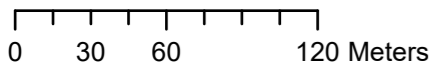
Map intended for distribution as a PDF document.
Scale may be incorrect when printed.

Contains information sourced from LINZ. Crown Copyright Reserved.

Unitary plan data sourced from Auckland Council published web services.
Legend information can be viewed on Auckland Council unitary plan viewer.

Linework shown on this plan is conceptual only.
Not to be used for construction.

Map Scale @ A3:



| Revision | Author | Verified | Approved | Date | Title: |
|----------|--------|----------|----------|----------|--|
| 1 | DA | SJ | CD | 23/11/22 | Supporting Growth NoR W1 - Do Minimum Road Traffic Noise |
| | | | | | |

| | |
|----------|--------------------|
| Client: | Supporting Growth |
| Project: | North West Package |



| | |
|-------------|----------------|
| Discipline: | GIS |
| Drawing No: | SGA-NOR-W1-000 |



| PPFs New | | PPFs Altered | |
|-------------------|-------------------|-------------------|-------------------|
| dB $L_{Aeq(24h)}$ | dB $L_{Aeq(24h)}$ | dB $L_{Aeq(24h)}$ | dB $L_{Aeq(24h)}$ |
| | | | |
| < 57 | < 64 | 64 - 67 | > 67 |
| Noise Level | | | |
| dB $L_{Aeq(24h)}$ | | | |
| | | | Other Buildings |
| 55 - 60 | | | Assessment Area |
| | | | Road |
| 60 - 65 | | | |
| | | | |
| 65 - 70 | | | |
| | | | |
| > 70 | | | |

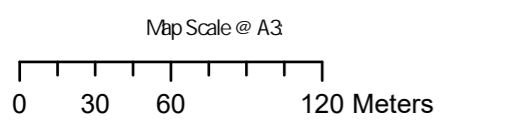
This map contains data derived in part or wholly from sources other than those party to the Supporting Growth Alliance, and therefore, no representations or warranties are made by those party to the Supporting Growth Alliance as to the accuracy or completeness of this information.

Map intended for distribution as a PDF document
Scale may be incorrect when printed.

Contains information sourced from LINZ. Crown Copyright Reserved.

Unitary plan data sourced from Auckland Council published web services.
Legend information can be viewed on Auckland Council unitary plan viewer.

Linework shown on this plan is conceptual only.
Not to be used for construction.



| Revision | Author | Verified | Approved | Date | Title |
|----------|--------|----------|----------|------------|-------|
| 1 | Author | DRAFT | DRAFT | dd/mm/yyyy | |

Supporting Growth
NoR W2 - Existing Road Traffic Noise

| | |
|---------|--------------------|
| Client | Supporting Growth |
| Project | North West Package |



| | |
|-------------|----------------|
| Discipline: | GIS |
| Drawing No: | SGA-NOR-W1-000 |

Auckland Council, LINZ, Waikato Regional, Esri, Community Maps Contributors, LINZ, Esri, HERE, Garmin, Foursquare, METI/NASA, USGS



| PPFs New | | PPFs Altered | |
|--------------------|--------------|--------------|-----------------|
| dB LAeq(24h) | dB LAeq(24h) | dB LAeq(24h) | dB LAeq(24h) |
| | < 57 | | < 64 |
| Noise Level | | | Other Buildings |
| dB LAeq(24h) | | | Assessment Area |
| | 55 - 60 | | Road |
| | 60 - 65 | | |
| | 65 - 70 | | |
| | > 70 | | |

This map contains data derived in part or wholly from sources other than those party to the Supporting Growth Alliance, and therefore, no representations or warranties are made by those party to the Supporting Growth Alliance as to the accuracy or completeness of this information.

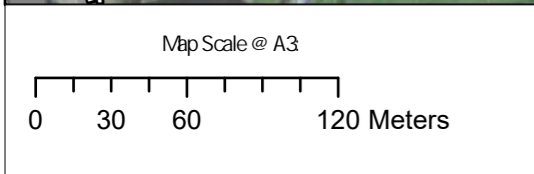
Map intended for distribution as a PDF document
Scale may be incorrect when printed.

Contains information sourced from LINZ. Crown Copyright Reserved.

Unitary plan data sourced from Auckland Council published web services.
Legend information can be viewed on Auckland Council unitary plan viewer.

Linework shown on this plan is conceptual only.
Not to be used for construction.

Auckland Council, LINZ, Waikato Regional, Esri Community Maps Contributors, LINZ, Esri, HERE, Garmin, Foursquare, METI/NASA, USGS



| Revision | Author | Verified | Approved | Date | Title: |
|----------|--------|----------|----------|------------|--------|
| 1 | Author | DRAFT | DRAFT | dd/mm/yyyy | |

Supporting Growth
NoR W2 - Existing Road Traffic Noise

Client: Supporting Growth
Project: North West Package



Discipline: GIS
Drawing No: SGA-NOR-W1-000



| PPFs New | | PPFs Altered | |
|---|---------|---|------|
| dB $L_{Aeq}(24h)$ | | dB $L_{Aeq}(24h)$ | |
| | < 57 | | < 64 |
| Noise Level | | Other Buildings | |
| dB $L_{Aeq}(24h)$ | | | |
| | 55 - 60 | Assessment Area | |
| | 60 - 65 | Road | |
| | 65 - 70 | | |
| | > 70 | | |

This map contains data derived in part or wholly from sources other than those party to the Supporting Growth Alliance, and therefore, no representations or warranties are made by those party to the Supporting Growth Alliance as to the accuracy or completeness of this information.

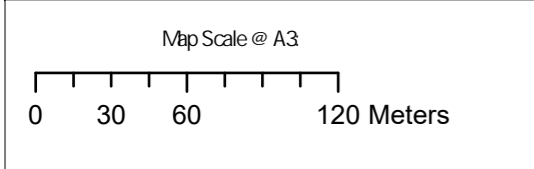
Map intended for distribution as a PDF document
Scale may be incorrect when printed.

Contains information sourced from LINZ. Crown Copyright Reserved.

Unitary plan data sourced from Auckland Council published web services.
Legend information can be viewed on Auckland Council unitary plan viewer.

Linework shown on this plan is conceptual only.
Not to be used for construction.

Auckland Council, LINZ, Waikato Regional, Esri Community Maps Contributors, LINZ, Esri, HERE, Garmin, Foursquare, METI/NASA, USGS



| Revision | Author | Verified | Approved | Date | Title |
|----------|--------|----------|----------|------------|-------|
| 1 | Author | DRAFT | DRAFT | dd/mm/yyyy | |

Supporting Growth
NoR W2 - Existing Road Traffic Noise

| | |
|---------|--------------------|
| Client | Supporting Growth |
| Project | North West Package |



| | |
|-------------|----------------|
| Discipline: | GIS |
| Drawing No: | SGA-NOR-W1-000 |



| PPFs New | PPFs Altered |
|---|---|
| dB $L_{Aeq(24h)}$ | dB $L_{Aeq(24h)}$ |
| ■ < 57 | ■ < 64 |
| Noise Level | ■ 64 - 67 |
| dB $L_{Aeq(24h)}$ | ■ Other Buildings |
| ■ 55 - 60 | — Assessment Area |
| ■ 60 - 65 | — Road |
| ■ 65 - 70 | |
| ■ > 70 | |

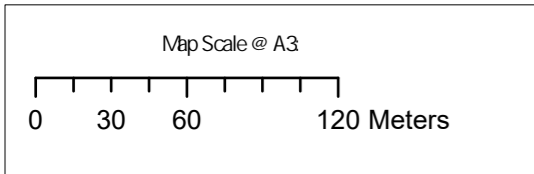
This map contains data derived in part or wholly from sources other than those party to the Supporting Growth Alliance, and therefore, no representations or warranties are made by those party to the Supporting Growth Alliance as to the accuracy or completeness of this information.

Map intended for distribution as a PDF document
Scale may be incorrect when printed.

Contains information sourced from LINZ. Crown Copyright Reserved.

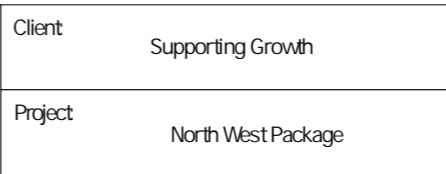
Unitary plan data sourced from Auckland Council published web services.
Legend information can be viewed on Auckland Council unitary plan viewer.

Linework shown on this plan is conceptual only.
Not to be used for construction.



| Revision | Author | Verified | Approved | Date | Title: |
|----------|--------|----------|----------|------------|---|
| 1 | Author | DRAFT | DRAFT | dd/mm/yyyy | Supporting Growth NoR W2 - Do Nothing Road Traffic Noise |

| | |
|---------|--------------------|
| Client | Supporting Growth |
| Project | North West Package |



| | |
|-------------|----------------|
| Discipline: | GIS |
| Drawing No: | SGA-NOR-W1-000 |



| PPFs New | PPFs Altered |
|---|---|
| dB $L_{Aeq(24h)}$ | dB $L_{Aeq(24h)}$ |
| < 57 | < 64 |
| Noise Level | Other Buildings |
| dB $L_{Aeq(24h)}$ | Assessment Area |
| 55 - 60 | Road |
| 60 - 65 | |
| 65 - 70 | |
| > 70 | |

This map contains data derived in part or wholly from sources other than those party to the Supporting Growth Alliance, and therefore, no representations or warranties are made by those party to the Supporting Growth Alliance as to the accuracy or completeness of this information.

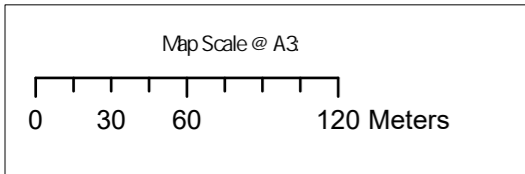
Map intended for distribution as a PDF document
Scale may be incorrect when printed.

Contains information sourced from LINZ. Crown Copyright Reserved.

Unitary plan data sourced from Auckland Council published web services.
Legend information can be viewed on Auckland Council unitary plan viewer.

Linework shown on this plan is conceptual only.
Not to be used for construction.

Auckland Council, LINZ, Waikato Regional, Esri Community Maps Contributors, LINZ, Esri, HERE, Garmin, Foursquare, METI/NASA, USGS



| Revision | Author | Verified | Approved | Date |
|----------|--------|----------|----------|------------|
| 1 | Author | DRAFT | DRAFT | dd/mm/yyyy |

Title: **Supporting Growth**
NoR W2 - Do Nothing Road Traffic Noise

Client: Supporting Growth

Project: North West Package



Discipline: GIS

Drawing No: SGA-NOR-W1-000



PPFs New
dB L_{Aeq(24h)}
 < 57
Noise Level
dB L_{Aeq(24h)}
 55 - 60
 60 - 65
 65 - 70
 > 70

PPFs Altered
dB L_{Aeq(24h)}
 < 64
 Other Buildings
 Assessment Area
 Road

This map contains data derived in part or wholly from sources other than those party to the Supporting Growth Alliance, and therefore, no representations or warranties are made by those party to the Supporting Growth Alliance as to the accuracy or completeness of this information.

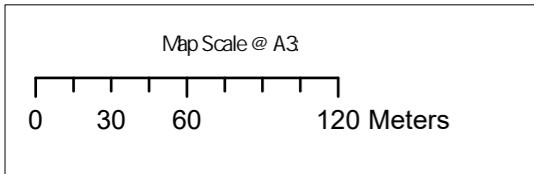
Map intended for distribution as a PDF document
Scale may be incorrect when printed.

Contains information sourced from LINZ. Crown Copyright Reserved.

Unitary plan data sourced from Auckland Council published web services.
Legend information can be viewed on Auckland Council unitary plan viewer.

Linework shown on this plan is conceptual only.
Not to be used for construction.

Auckland Council, LINZ, Waikato Regional, Esri Community Maps Contributors, LINZ, Esri, HERE, Garmin, Foursquare, METI/NASA, USGS



| Revision | Author | Verified | Approved | Date |
|----------|--------|----------|----------|------------|
| 1 | Author | DRAFT | DRAFT | dd/mm/yyyy |

Title:
 Supporting Growth
 NoR W2 - Do Nothing Road Traffic Noise

Client: Supporting Growth
Project: North West Package



Discipline: GIS
Drawing No: SGA-NOR-W1-000