

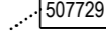

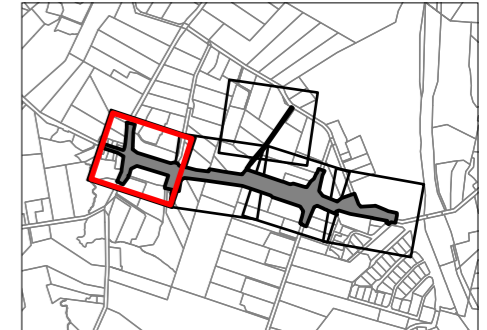


Designation Plan

Land to be Designated New connection between Dairy Flat Highway and Wilks Road

- Legend**
-  Proposed Designation
 -  Parcel Boundary
 -  Property ID
 -  Existing Designation

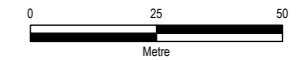


This map contains data derived in part or wholly from sources other than those party to the Supporting Growth Alliance, and therefore, no representations or warranties are made by those party to the Supporting Growth Alliance as to the accuracy or completeness of this information.

Map intended for distribution as a PDF document.
Scale may be incorrect when printed.

Contains information sourced from LINZ. Crown Copyright Reserved.

Map Scale @ A3: 1:1,500



Revision	Author	Verified	Approved	Date
1	BAP	RR9	KB	20/07/2023



Client: **Auckland Transport / Waka Kotahi**

Discipline: **GIS**

Project: **North Projects**

Drawing No: **SGA-PA-N-001**
Sheet No : 1 of 5

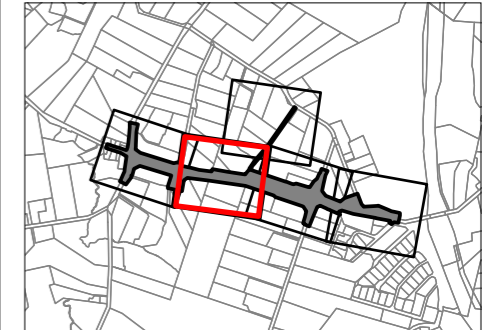


Designation Plan

Land to be Designated New connection between Dairy Flat Highway and Wilks Road

Legend

- Proposed Designation
- Parcel Boundary
- Property ID
- Existing Designation

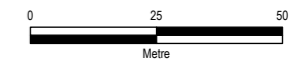


This map contains data derived in part or wholly from sources other than those party to the Supporting Growth Alliance, and therefore, no representations or warranties are made by those party to the Supporting Growth Alliance as to the accuracy or completeness of this information.

Map intended for distribution as a PDF document.
Scale may be incorrect when printed.

Contains information sourced from LINZ. Crown Copyright Reserved.

Map Scale @ A3: 1:1,500



Revision	Author	Verified	Approved	Date
1	BAP	RR9	KB	20/07/2023

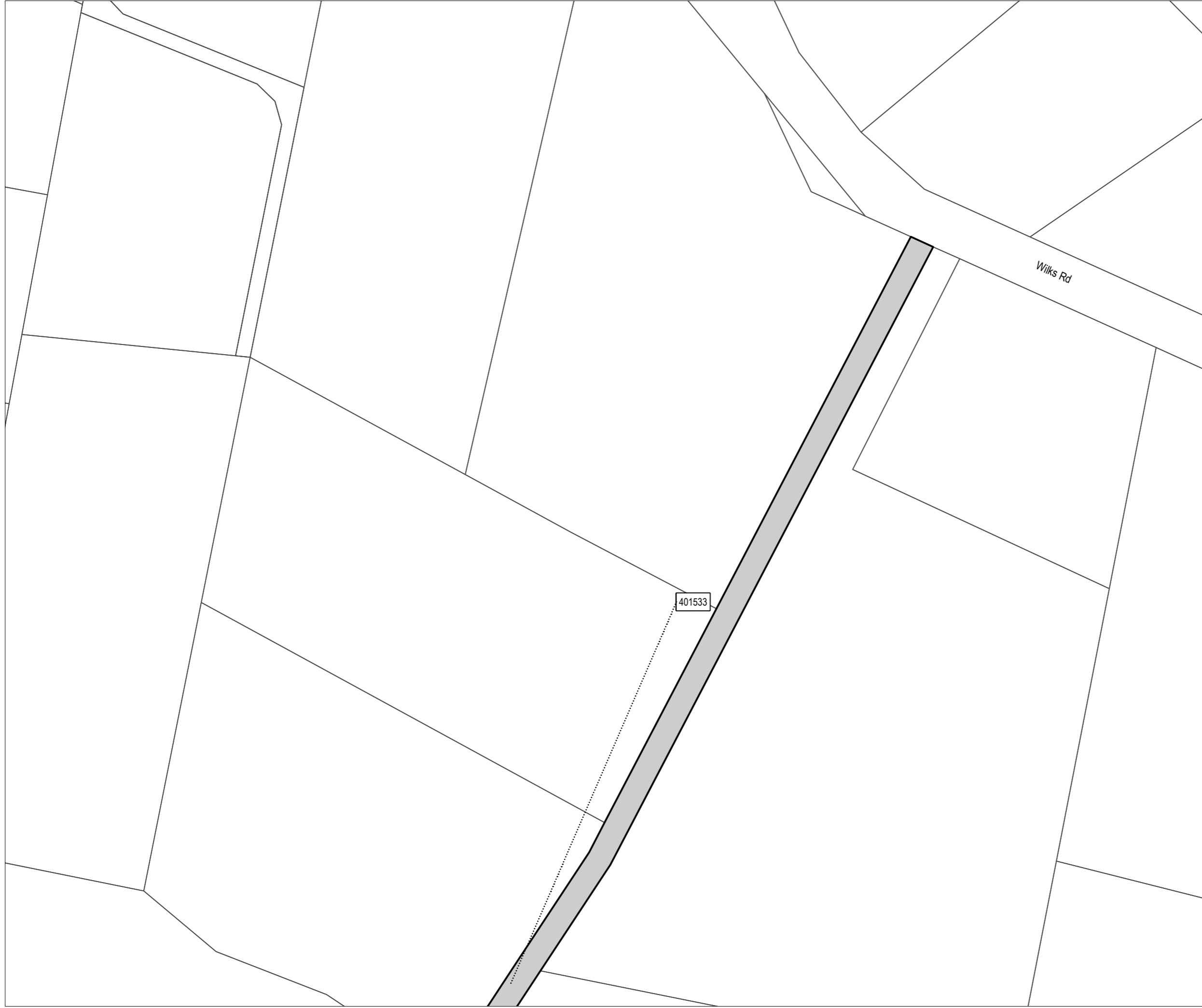


Client:
Auckland Transport / Waka Kotahi



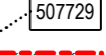

Discipline:
GIS

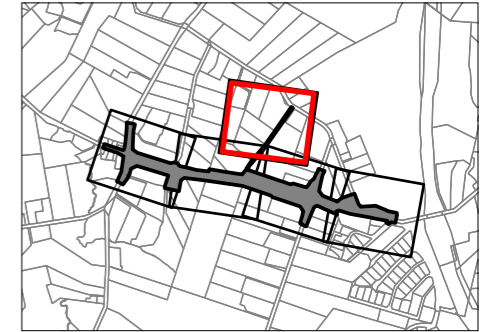
Project:
North Projects

Drawing No:
SGA-PA-N-001
Sheet No : 2 of 5



Designation Plan
 Land to be Designated
 New connection between Dairy
 Flat Highway and Wilks Road

- Legend**
-  Proposed Designation
 -  Parcel Boundary
 -  507729 Property ID
 -  Existing Designation

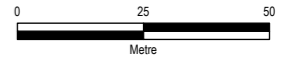


This map contains data derived in part or wholly from sources other than those party to the Supporting Growth Alliance, and therefore, no representations or warranties are made by those party to the Supporting Growth Alliance as to the accuracy or completeness of this information.

Map intended for distribution as a PDF document.
 Scale may be incorrect when printed.

Contains information sourced from LINZ. Crown Copyright Reserved.

Map Scale @ A3: 1:1,500



Revision	Author	Verified	Approved	Date
1	BAP	RR9	KB	20/07/2023



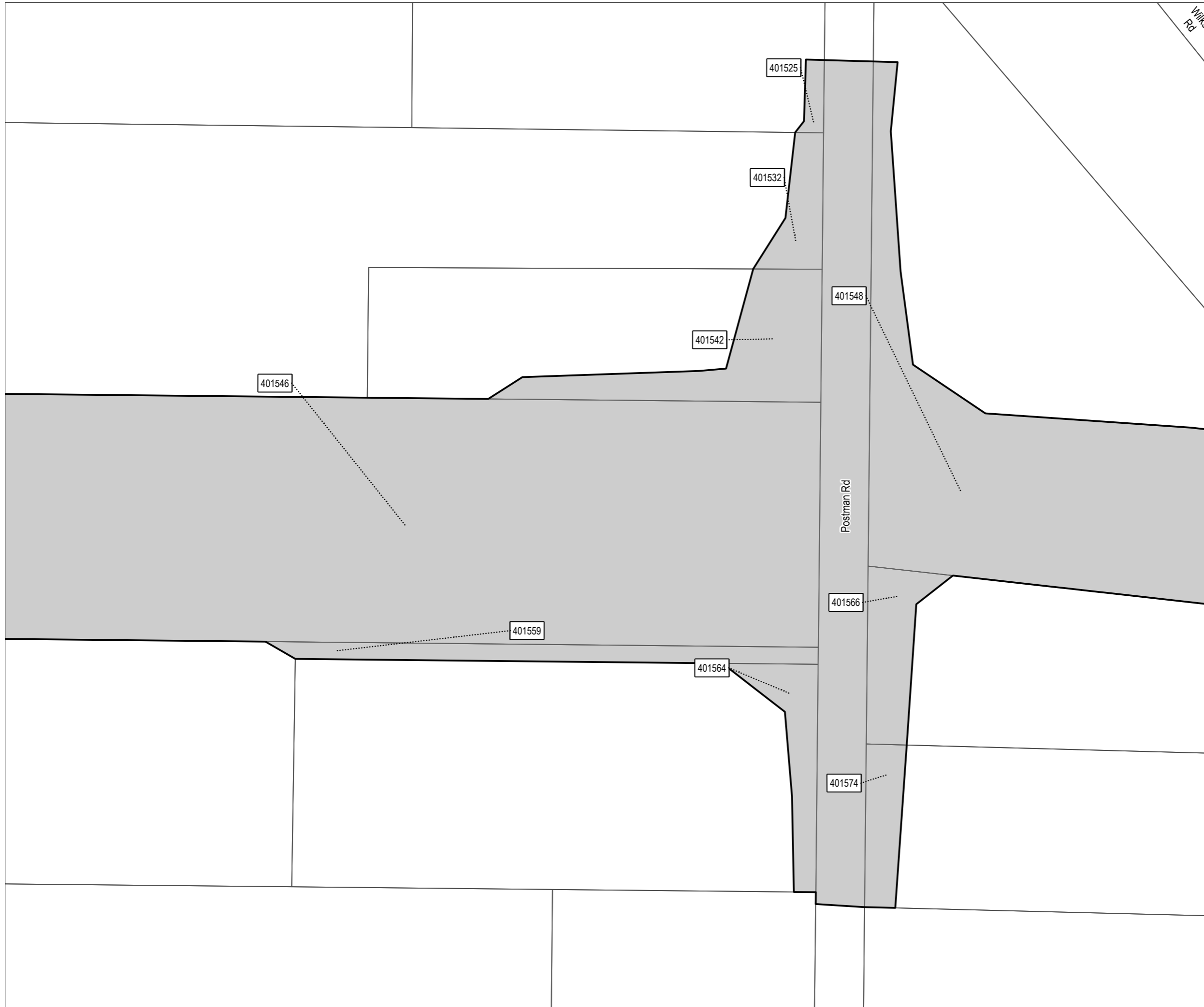
Client:
Auckland Transport / Waka Kotahi

Discipline:
GIS

Project:
North Projects

Drawing No:
SGA-PA-N-001
 Sheet No : 3 of 5

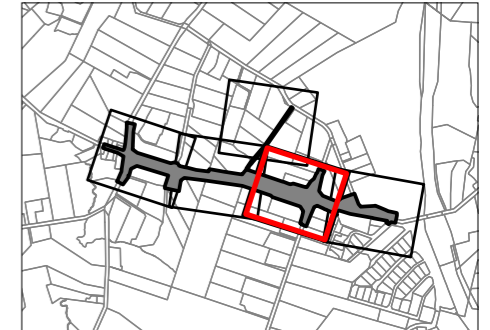




Designation Plan

Land to be Designated
New connection between Dairy
Flat Highway and Wilks Road

- Legend**
- Proposed Designation
 - Parcel Boundary
 - Property ID
 - Existing Designation

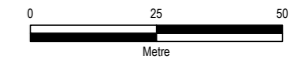


This map contains data derived in part or wholly from sources other than those party to the Supporting Growth Alliance, and therefore, no representations or warranties are made by those party to the Supporting Growth Alliance as to the accuracy or completeness of this information.

Map intended for distribution as a PDF document.
Scale may be incorrect when printed.

Contains information sourced from LINZ. Crown Copyright Reserved.

Map Scale @ A3: 1:1,500



Revision	Author	Verified	Approved	Date
1	BAP	RR9	KB	20/07/2023

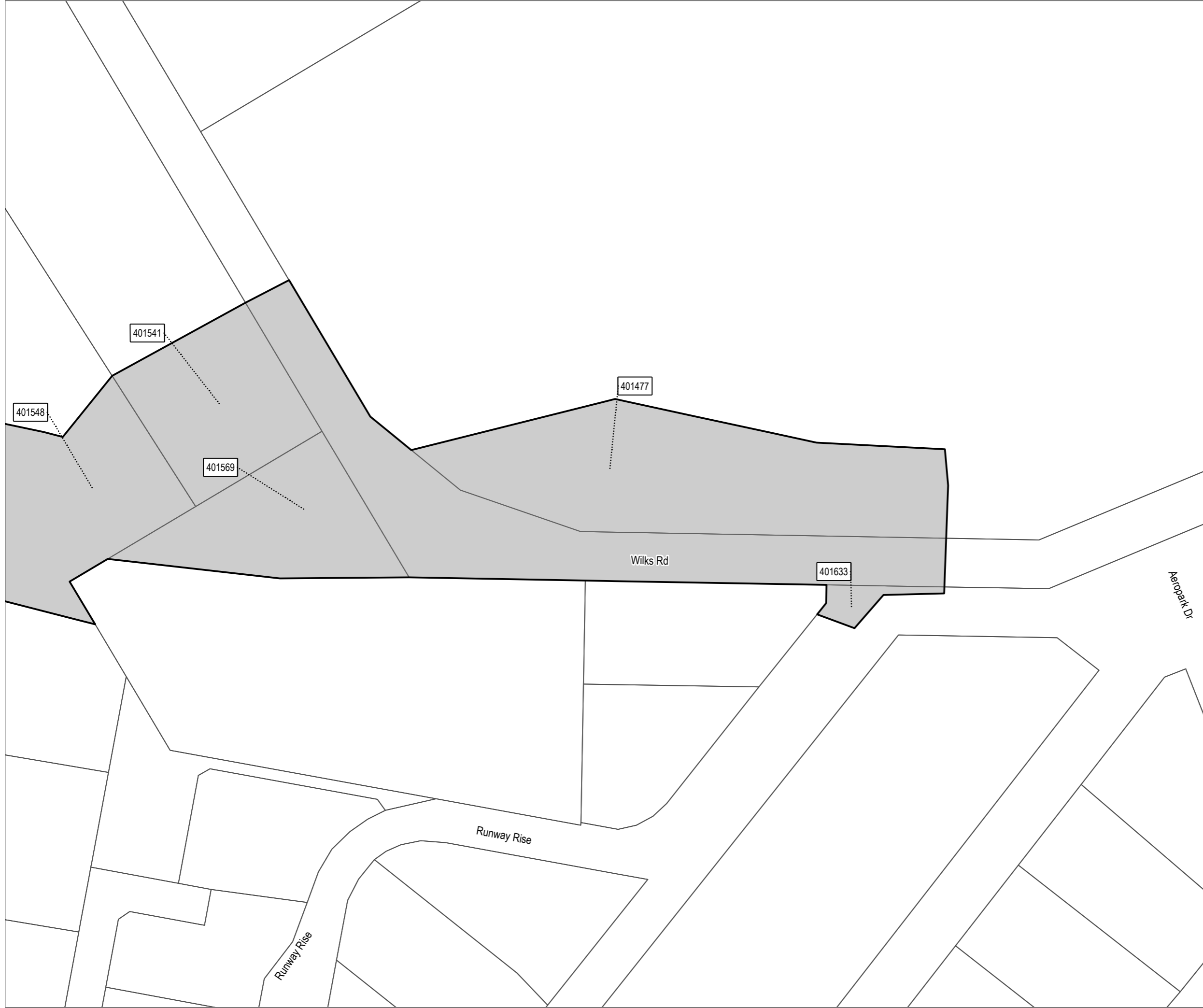


Client: **Auckland Transport / Waka Kotahi**

Discipline: **GIS**

Project: **North Projects**



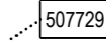
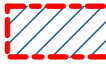
Drawing No: **SGA-PA-N-001**
Sheet No : 4 of 5

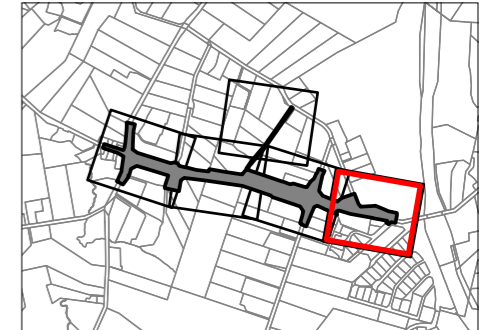


Designation Plan

Land to be Designated
New connection between Dairy
Flat Highway and Wilks Road

Legend

-  Proposed Designation
-  Parcel Boundary
-  Property ID
-  Existing Designation

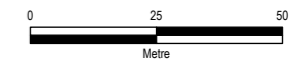


This map contains data derived in part or wholly from sources other than those party to the Supporting Growth Alliance, and therefore, no representations or warranties are made by those party to the Supporting Growth Alliance as to the accuracy or completeness of this information.

Map intended for distribution as a PDF document.
Scale may be incorrect when printed.

Contains information sourced from LINZ. Crown Copyright Reserved.

Map Scale @ A3: 1:1,500



Revision	Author	Verified	Approved	Date
1	BAP	RR9	KB	20/07/2023



Client: **Auckland Transport / Waka Kotahi**

Discipline: **GIS**

Project: **North Projects**

Drawing No: **SGA-PA-N-001**
Sheet No : 5 of 5



New Zealand Government