

Takaanini Level Crossings
Landscape, Natural Character and Visual Assessment

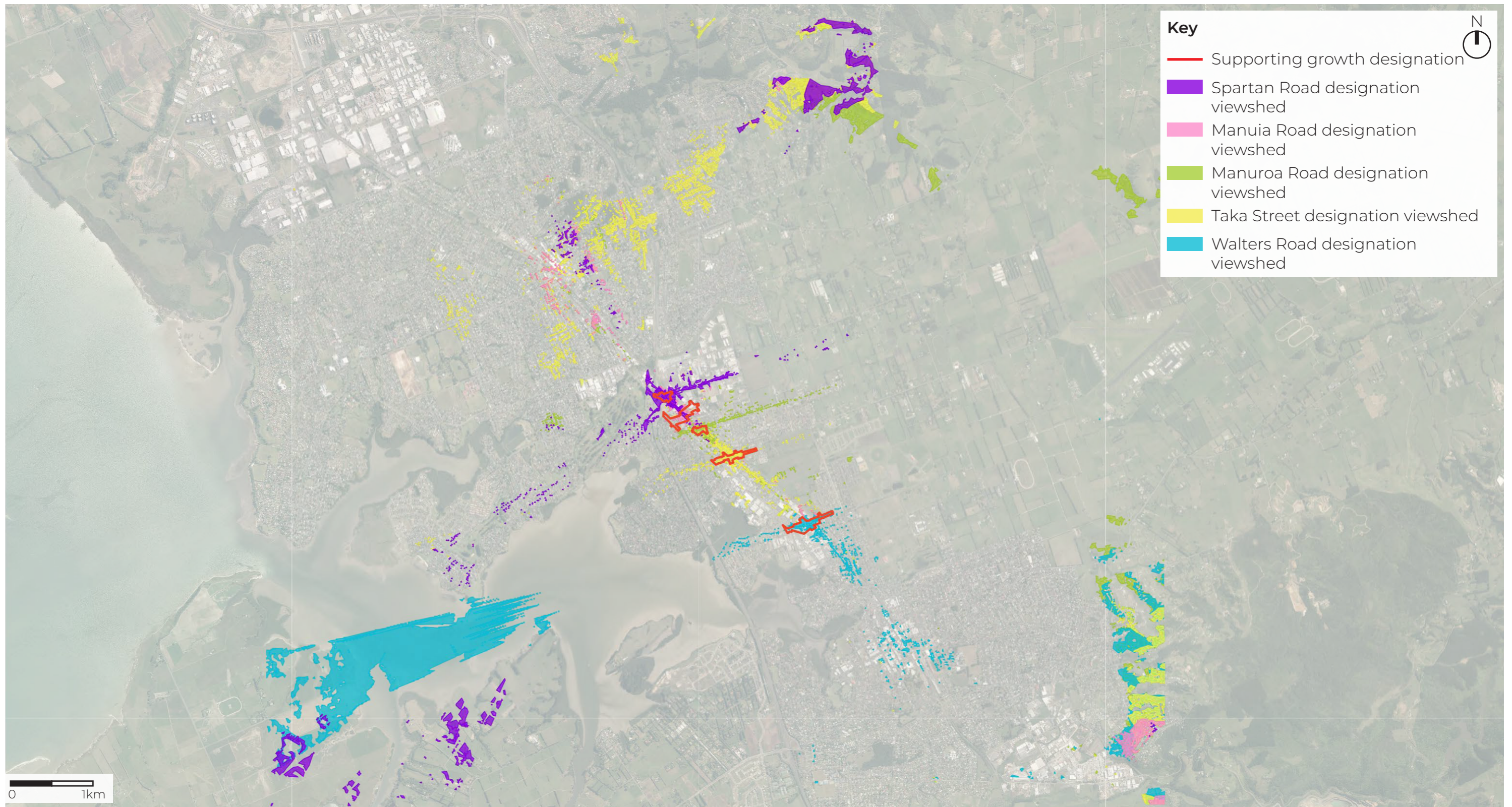
Appendix A:

Supplementary Maps and Viewpoint Photos

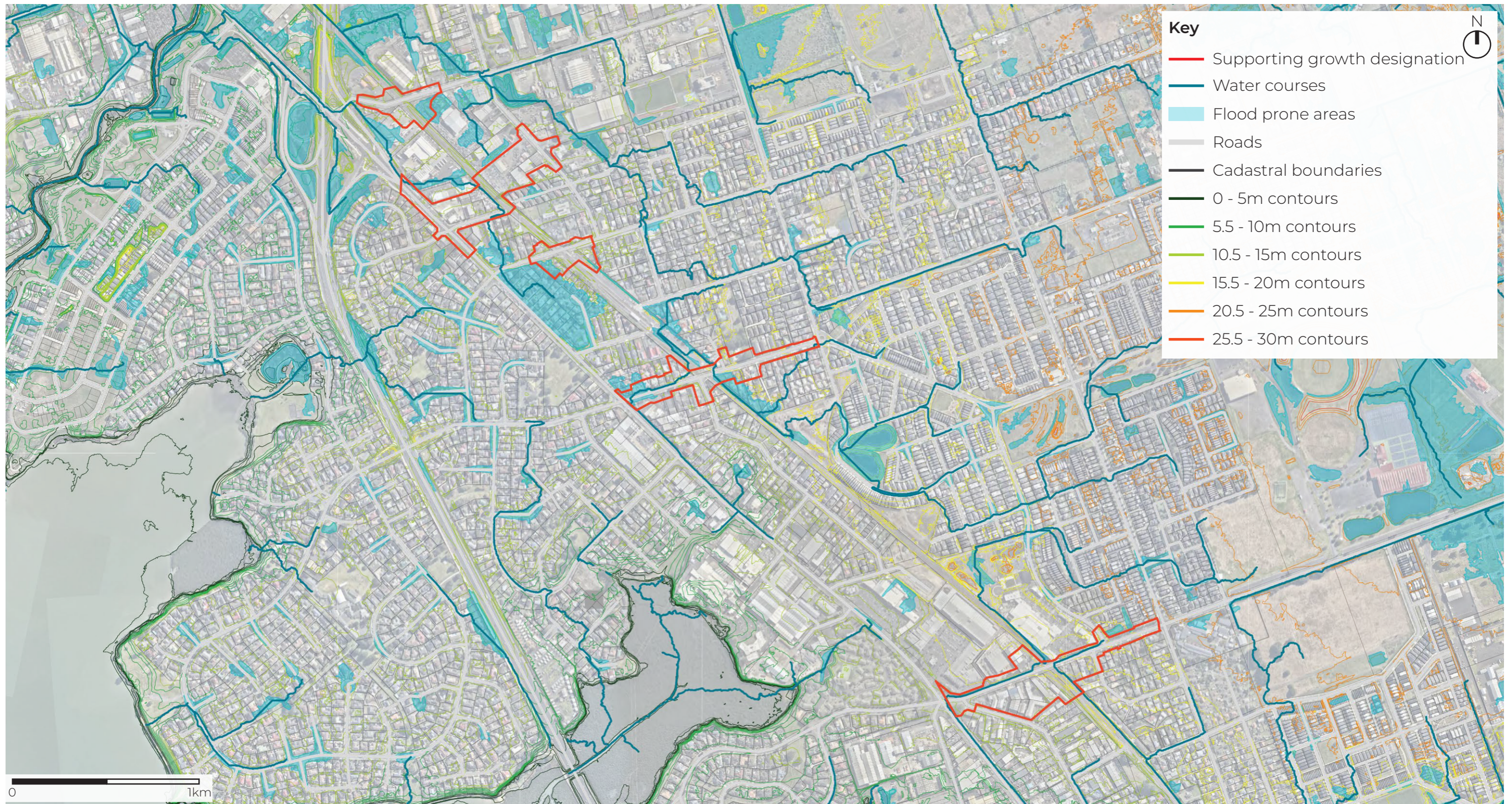
2 June 2023
Final
Rev 3



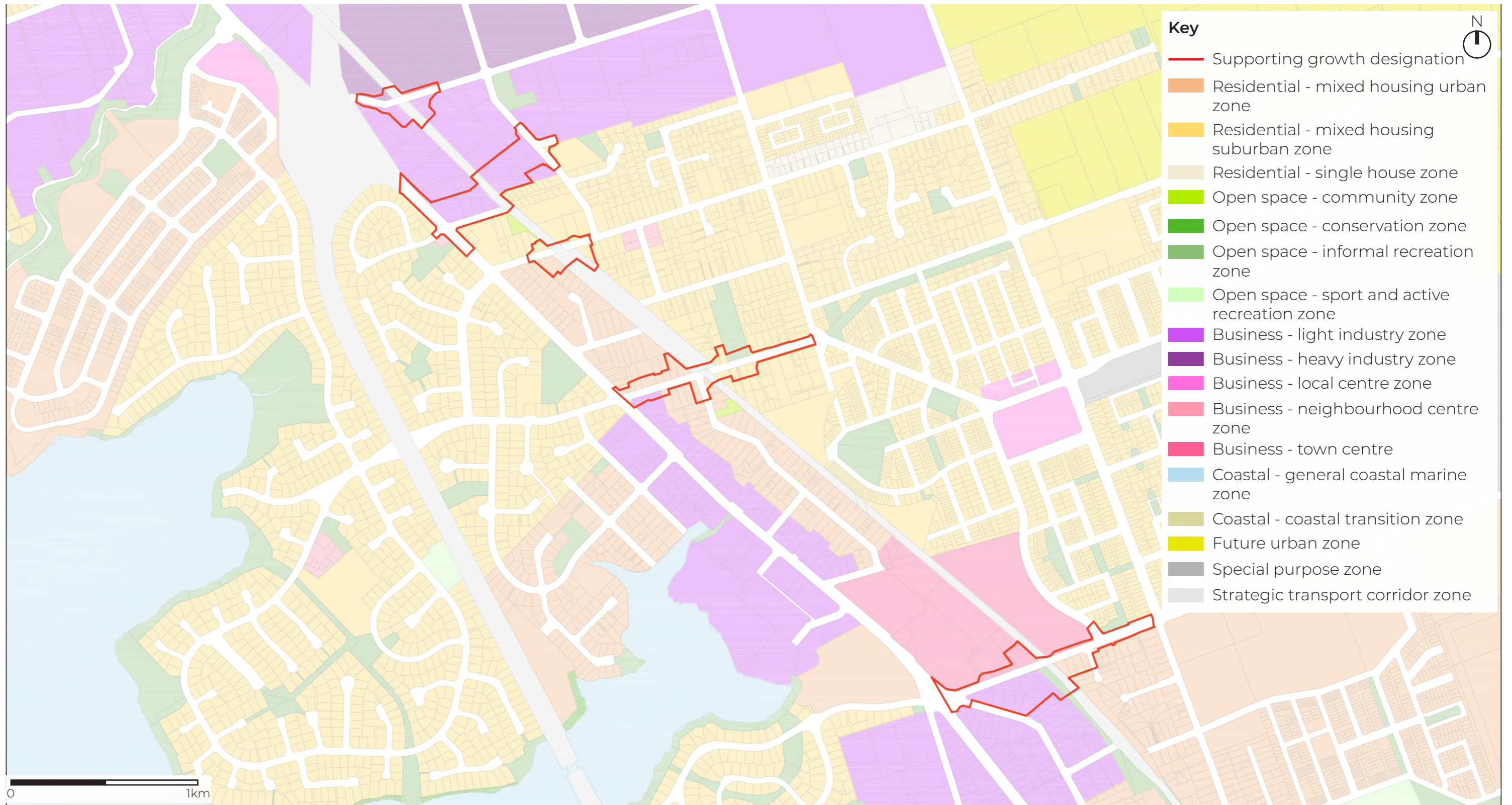
Map 01: Topographical Map - Wider Landscape Context



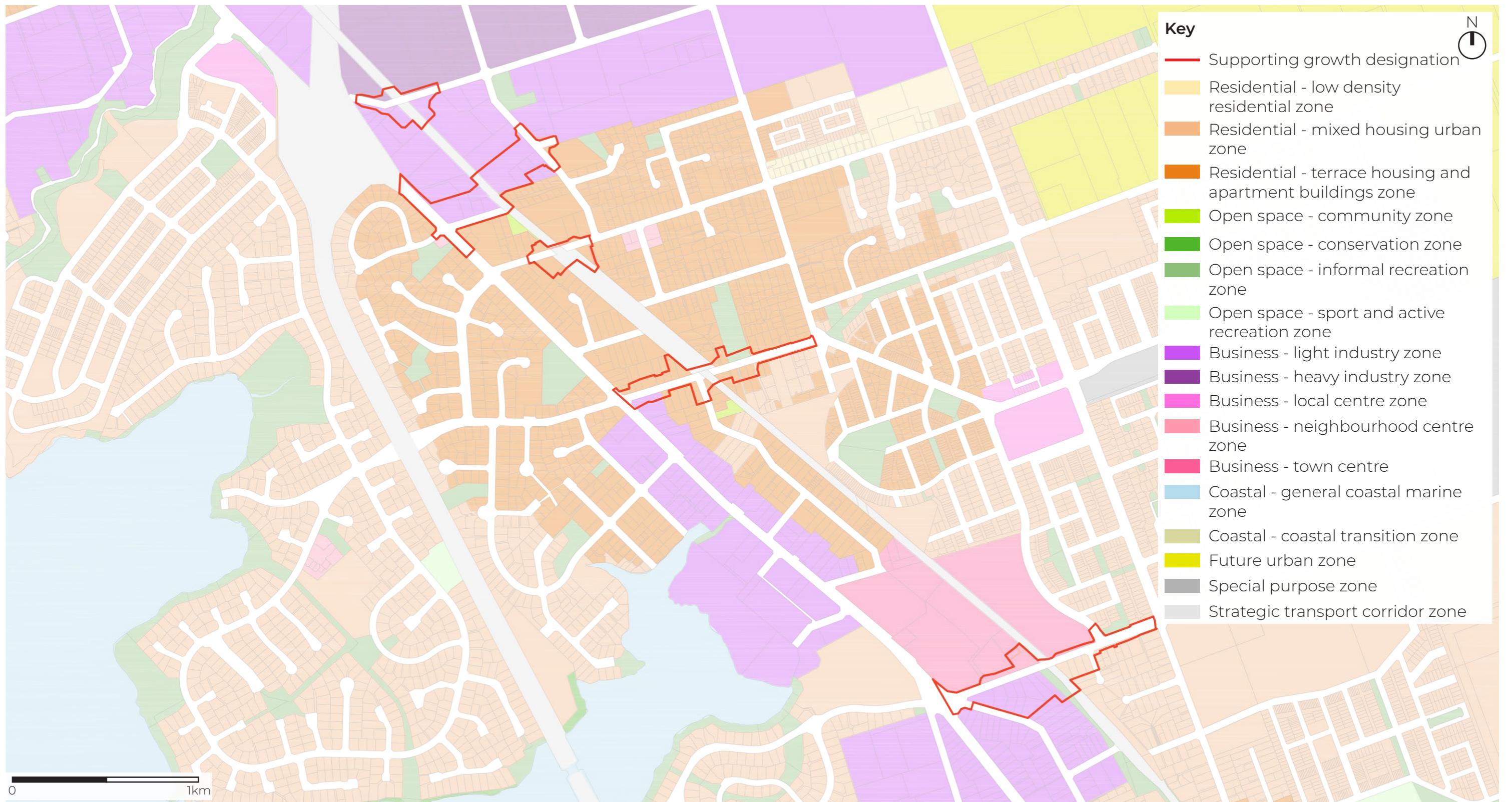
Map 02: Viewshed Map - Wider Landscape Context



Map 03: Topographical Map - Close Landscape Context



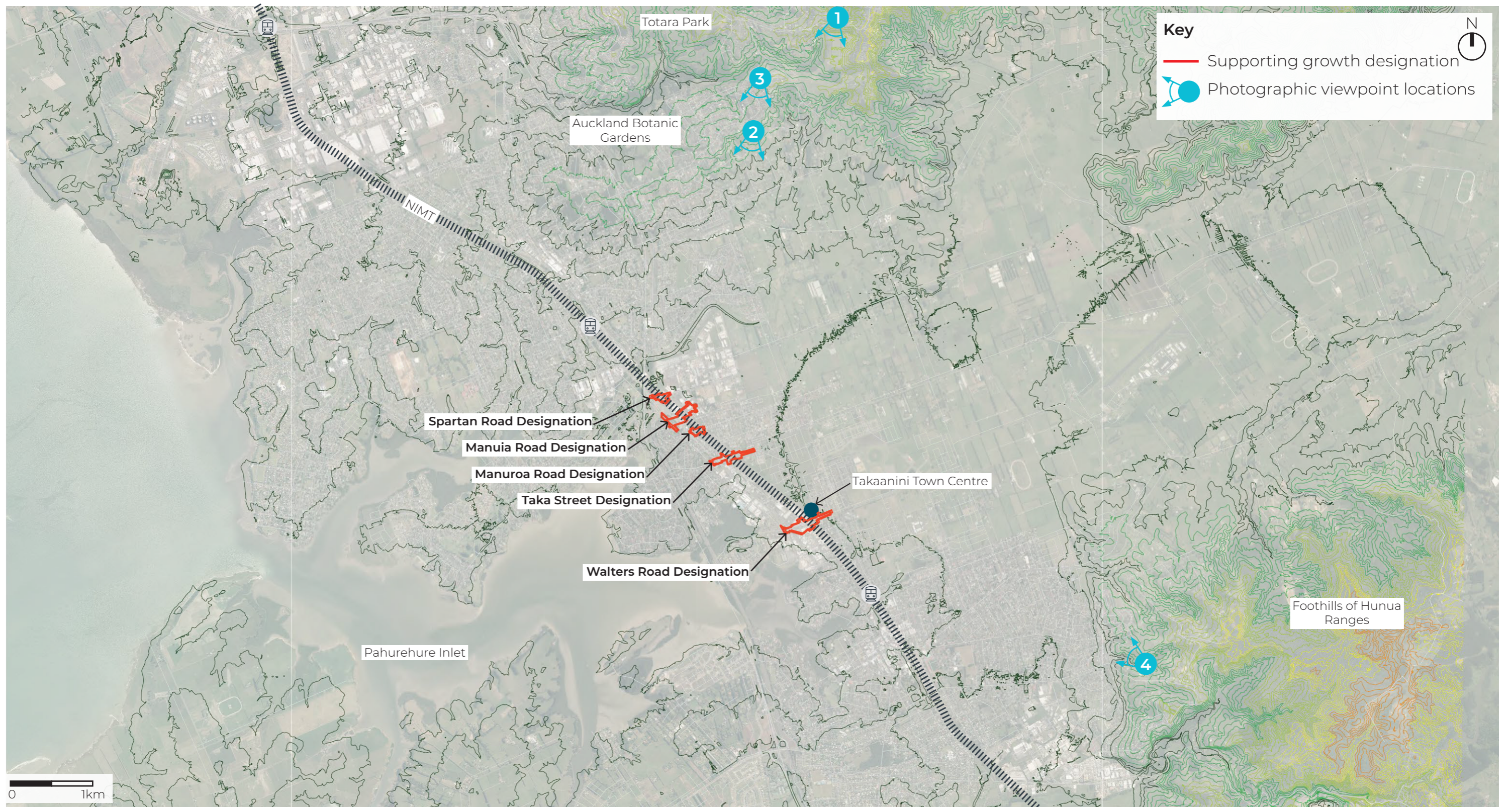
Map 04: Current Planning Zones - Close Landscape Context



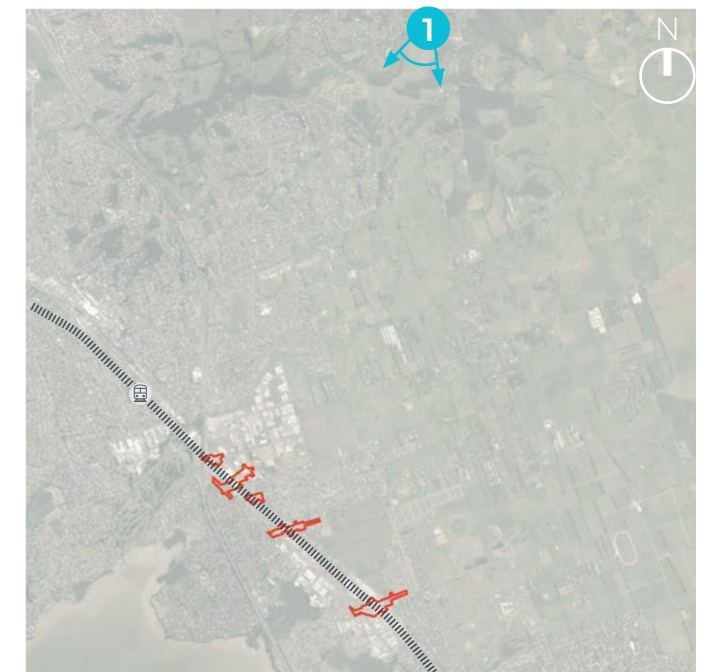
Map 05: Future Planning Zones - Plan Change 78 - Close Landscape Context



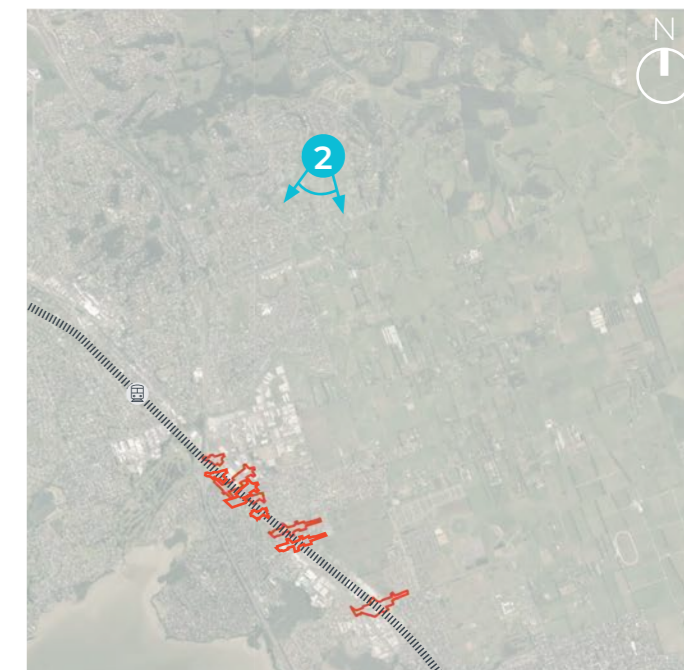
Map 06: Viewshed Map - Close Landscape Context



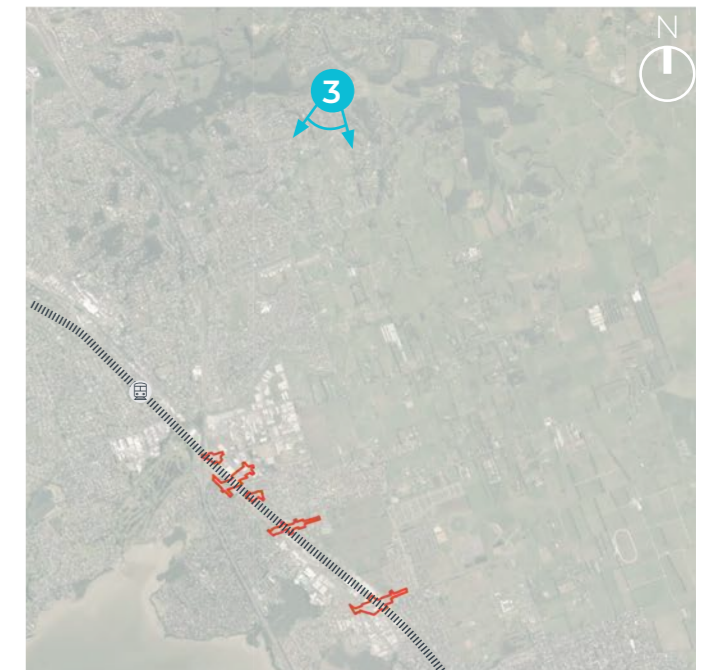
Map 07: Viewpoint Reference Plan - Wider Landscape Context



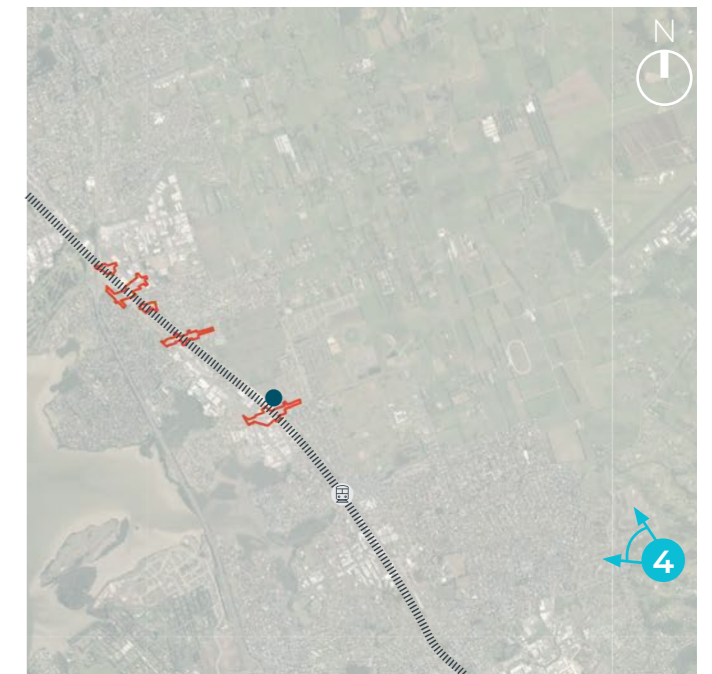
VP 1: View from Redoubt Road looking southwest towards Takaanini Town Centre, approximately 5.3km from Takaanini Town Centre



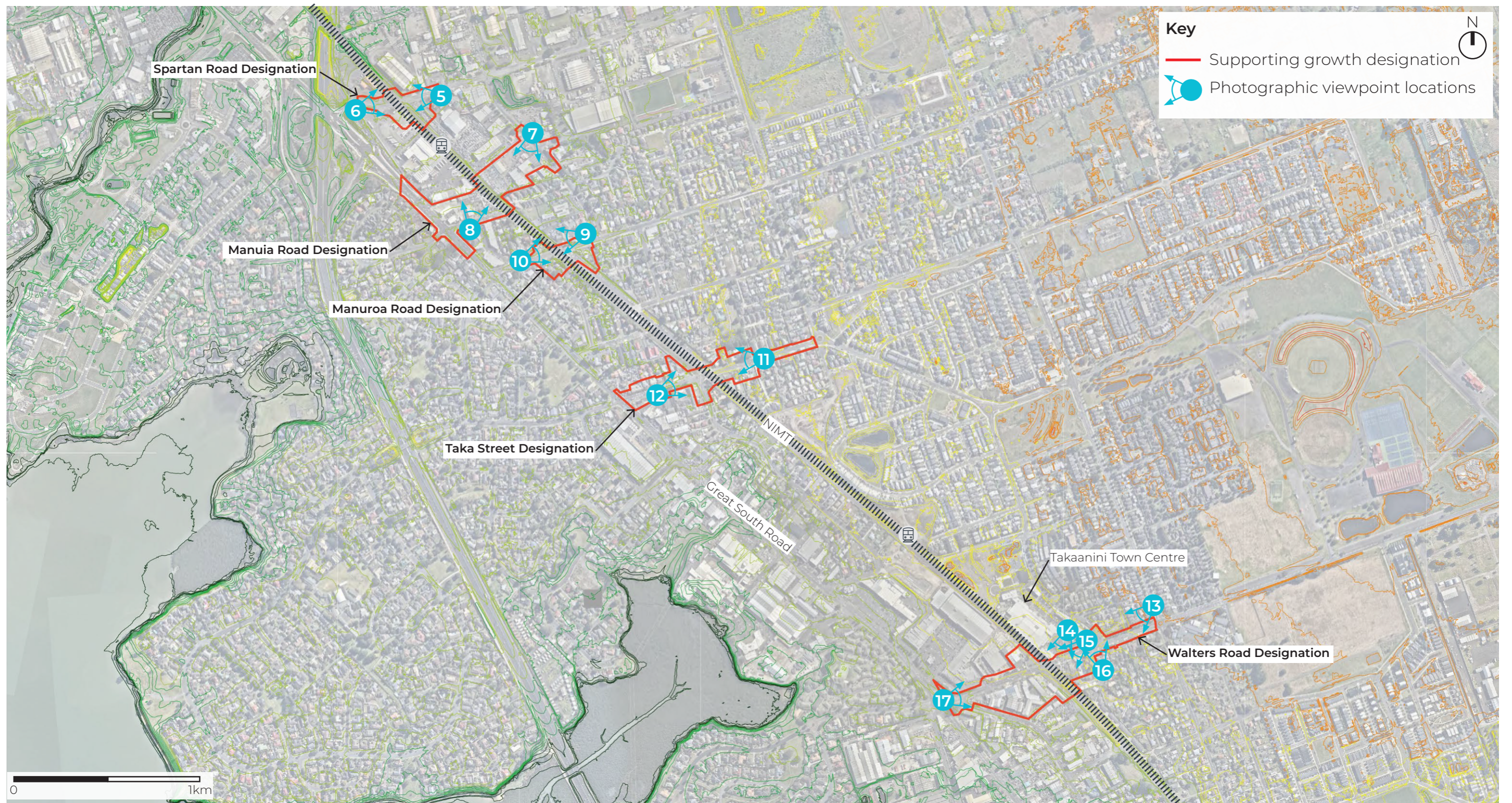
VP 2: View from Polo Prince Drive looking southwest towards Takaanini Town Centre, approximately 3.8km from Takaanini Town Centre



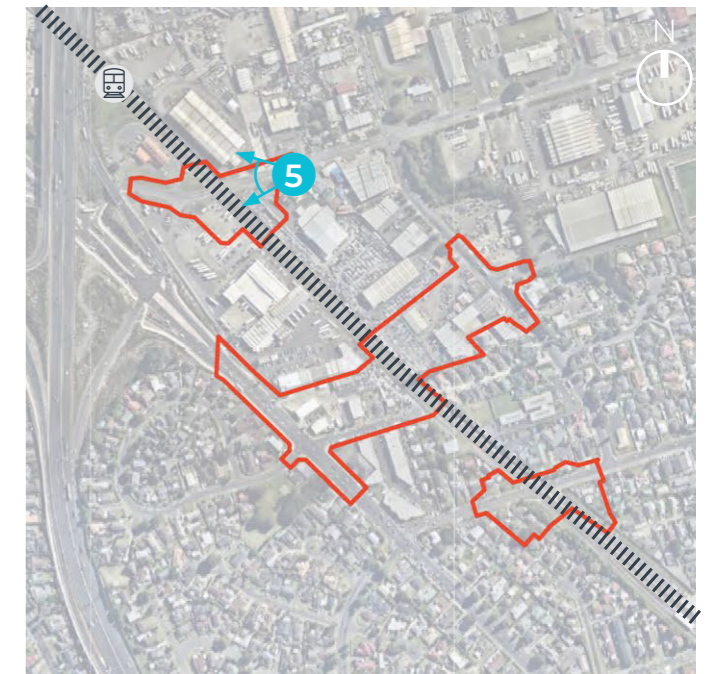
VP 3: View from Jabal Crescent looking southwest towards Takaanini Town Centre, approximately 4.5km from Takaanini Town Centre



VP 4: View from Settlement Road looking northwest towards Takaanini Town Centre, approximately 5.5km from Takaanini Town Centre



Map 08: Viewpoint Reference Plan - Close Landscape Context



VP 5: View from Spartan Road looking west towards the NIMT

Project Name: Te Tupu Ngātahi Supporting Growth | Takaanini Level Crossing | Landscape, Natural Character and Visual Effects Assessment

Date: 2 June 2023

Status: Final

Revision: 3.0

Prepared By: Maddie Palmer

Reviewed By: Catherine Hamilton

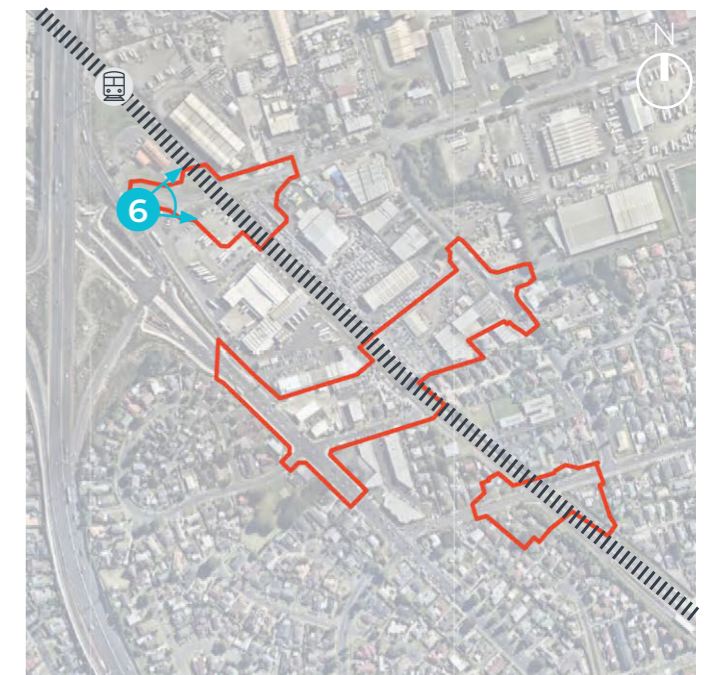
Figure: LA013

Photo Location: -37.0358995, 174.9135175

Photo taken using a Canon EOS 5D Camera with 50mm lens at 5.30pm on 22/11/2022



Prepared by WSP NZ for Te Tupu Ngātahi Supporting Growth Alliance



VP 6: View from Spartan Road looking east towards the NIMT

Project Name: Te Tupu Ngātahi Supporting Growth | Takaanini Level Crossing | Landscape, Natural Character and Visual Effects Assessment

Date: 2 June 2023

Status: Final

Revision: 3.0

Prepared By: Maddie Palmer

Reviewed By: Catherine Hamilton

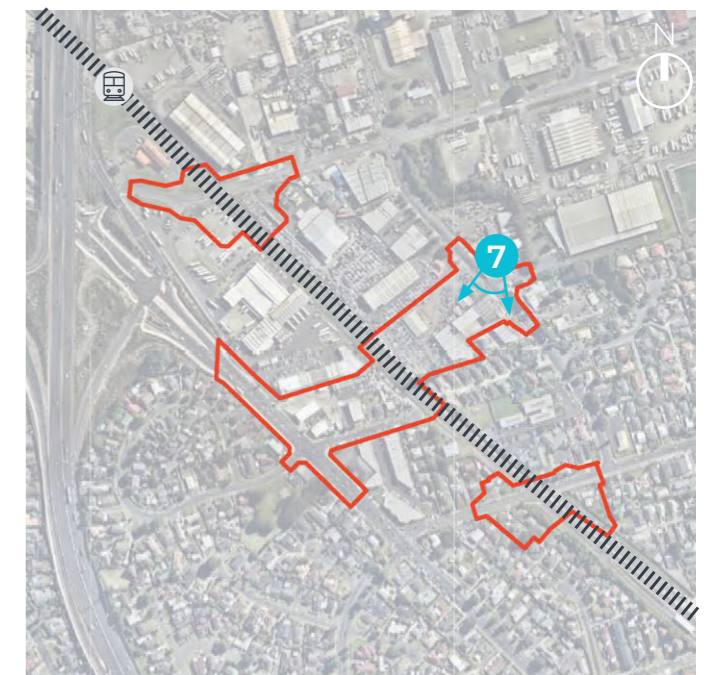
Figure: LA014

Photo Location: -37.0362193, 174.9112376

Photo taken using a Canon EOS 5D Camera with 50mm lens at 5.45pm on 22/11/2022



Prepared by WSP NZ for Te Tupu Ngātahi Supporting Growth Alliance



VP 7: View from the corner of Oakleigh Ave and Hitchcock Road looking southwest towards the proposed designation for Manuia Road



VP 8: View from Manuia Road looking northeast towards the proposed designation for Manuia Road

Project Name: Te Tupu Ngātahi Supporting Growth | Takaanini Level Crossing | Landscape, Natural Character and Visual Effects Assessment

Date: 2 June 2023

Status: Final

Revision: 3.0

Prepared By: Maddie Palmer

Reviewed By: Catherine Hamilton

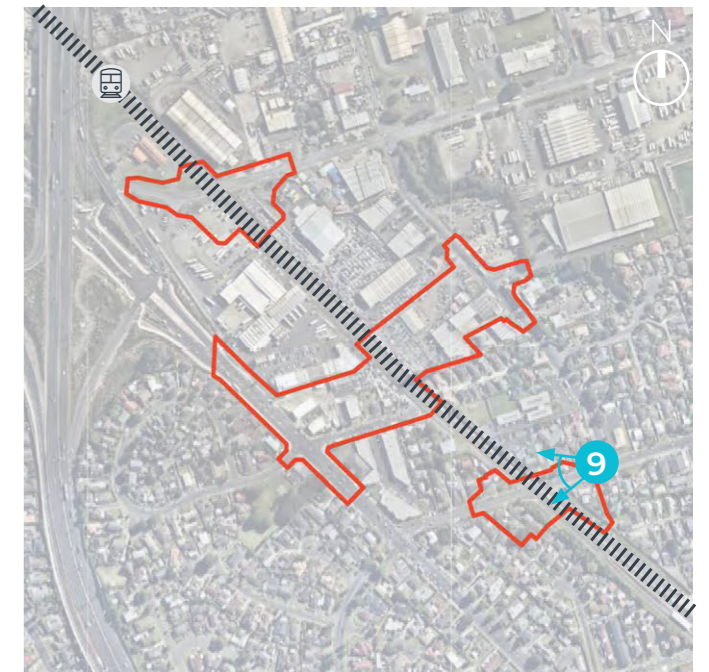
Figure: LA016

Photo Location: -37.0390427, 174.9148007

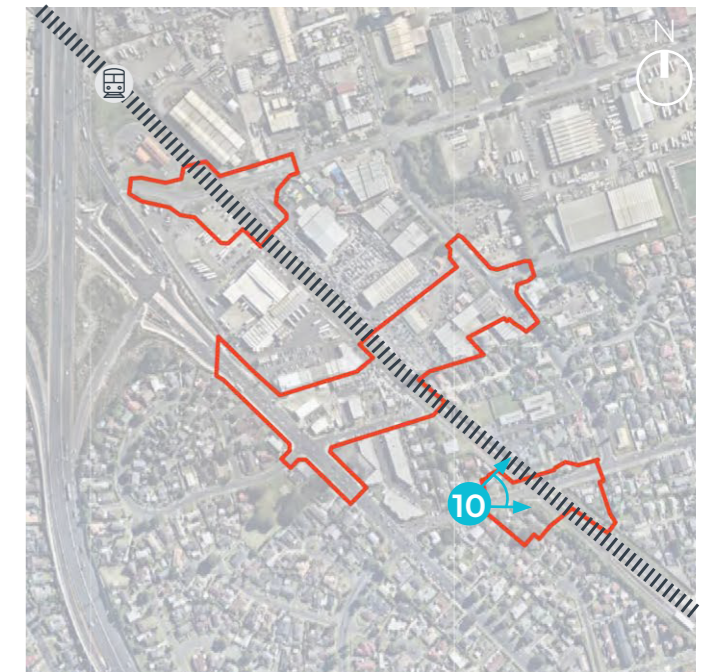
Photos taken using a Canon EOS 5D Camera with 50mm lens at 6pm on 22/11/2022. Two photos have been stitched together using Adobe Photoshop PhotoMerge.



Prepared by WSP NZ for Te Tupu Ngātahi Supporting Growth Alliance



VP 9: View from the corner of Oakleigh Ave and Manuroa Road looking west towards the NIMT



VP 10: View from Manuroa Road looking east towards the NIMT

Project Name: Te Tupu Ngātahi Supporting Growth | Takaanini Level Crossing | Landscape, Natural Character and Visual Effects Assessment

Date: 2 June 2023

Status: Final

Revision: 3.0

Prepared By: Maddie Palmer

Reviewed By: Catherine Hamilton

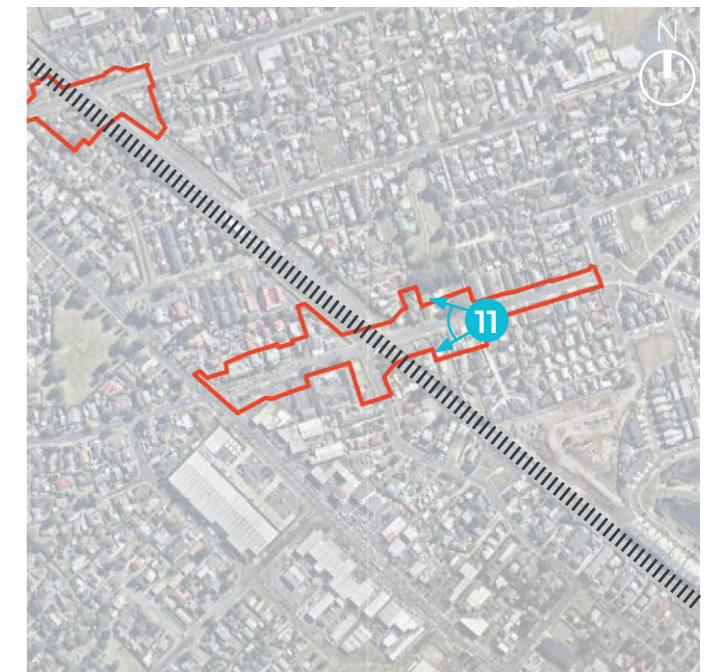
Figure: LA018

Photo Location: -37.0397612, 174.9163804

Photo taken using a Canon EOS 5D Camera with 50mm lens at 4.45pm on 22/11/2022



Prepared by WSP NZ for Te
Tupu Ngātahi Supporting
Growth Alliance



VP 11: View from Taka Street looking west towards the NIMT

Project Name: Te Tupu Ngātahi Supporting Growth | Takaanini Level Crossing | Landscape, Natural Character and Visual Effects Assessment

Date: 2 June 2023

Status: Final

Revision: 3.0

Prepared By: Maddie Palmer

Reviewed By: Catherine Hamilton

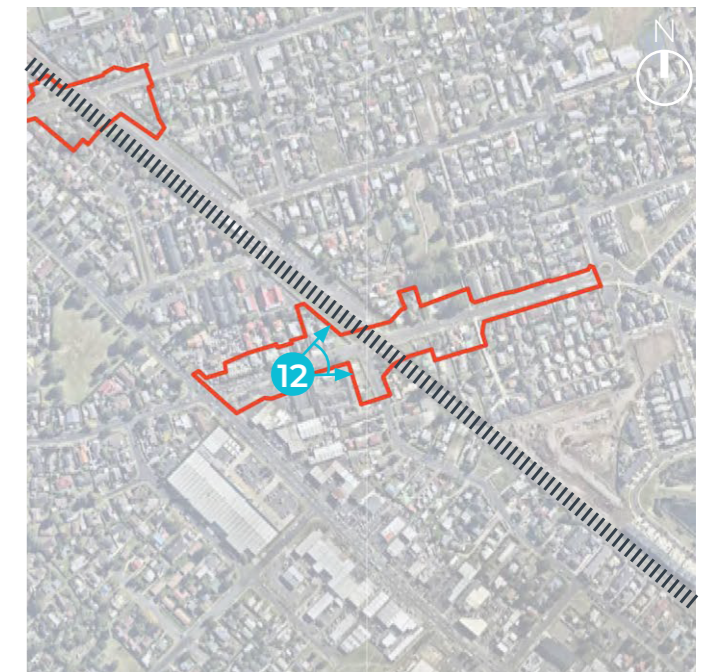
Figure: LA019

Photo Location: -37.0420601, 174.9233274

Photo taken using a Canon EOS 5D Camera with 50mm lens at 4pm on 22/11/2022



Prepared by WSP NZ for Te
Tupu Ngātahi Supporting
Growth Alliance



VP 12: View from Taka Street looking east towards the NIMT

Project Name: Te Tupu Ngātahi Supporting Growth | Takaanini Level Crossing | Landscape, Natural Character and Visual Effects Assessment

Date: 2 June 2023

Status: Final

Revision: 3.0

Prepared By: Maddie Palmer

Reviewed By: Catherine Hamilton

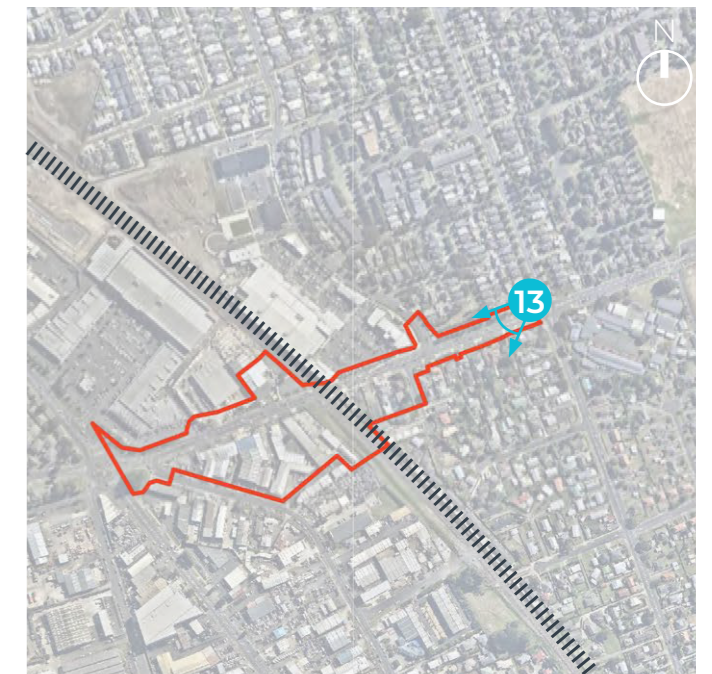
Figure: LA020

Photo Location: -37.0428369, 174.9206830

Photo taken using a Canon EOS 5D Camera with 50mm lens at 4.30pm on 22/11/2022



Prepared by WSP NZ for Te Tupu Ngātahi Supporting Growth Alliance



VP 13: View from the corner of Walters Road and Porchester Road looking west towards the NIMT

Project Name: Te Tupu Ngātahi Supporting Growth | Takaanini Level Crossing | Landscape, Natural Character and Visual Effects Assessment

Date: 2 June 2023

Status: Final

Revision: 3.0

Prepared By: Maddie Palmer

Reviewed By: Catherine Hamilton

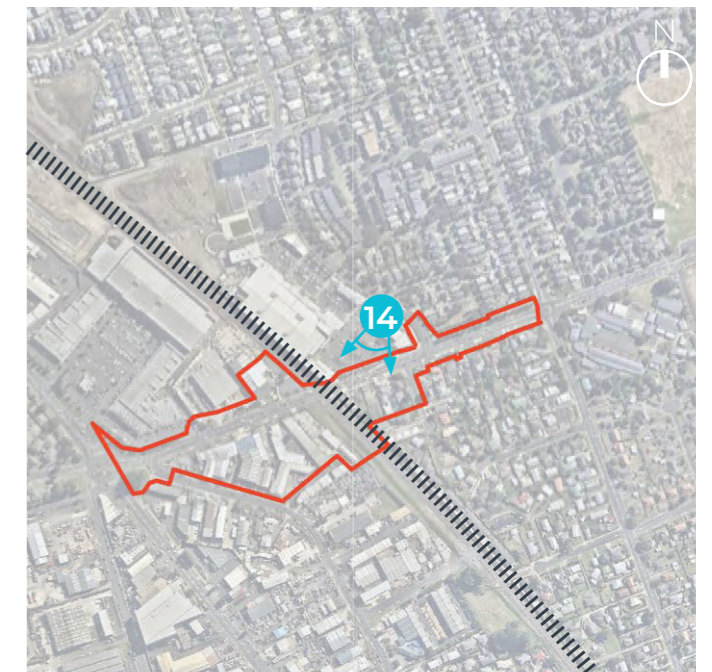
Figure: LA021

Photo Location: -37.0482013, 174.9351190

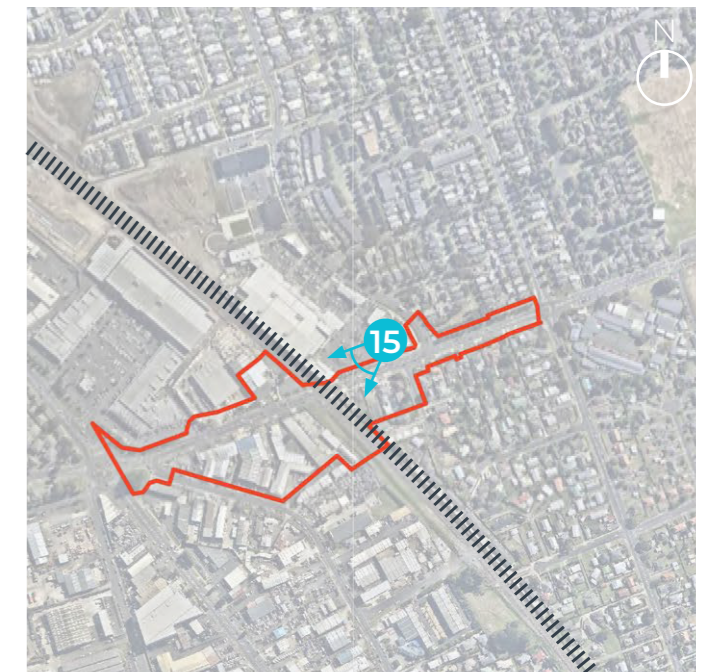
Photo taken using a Canon EOS 5D Camera with 50mm lens at 2.50pm on 22/11/2022



Prepared by WSP NZ for Te Tupu Ngātahi Supporting Growth Alliance



VP 14: View from the upper floor of Takaanini Village Limited, Takaanini Town Centre, 30 Walters Road, looking south west towards the NIMT



VP 15: View from the northern footpath on Walters Road looking west towards the NIMT

Project Name: Te Tupu Ngātahi Supporting Growth | Takaanini Level Crossing | Landscape, Natural Character and Visual Effects Assessment

Date: 2 June 2023

Status: Final

Revision: 3.0

Prepared By: Maddie Palmer

Reviewed By: Catherine Hamilton

Figure: LA023

Photo Location: -37.0487640, 174.9330718

Photo taken using a Canon EOS 5D Camera with 50mm lens at 2.45pm on 22/11/2022



Prepared by WSP NZ for Te Tupu Ngātahi Supporting Growth Alliance



VP 16: View from Braeburn Place looking north towards the Takaanini Town Centre

Project Name: Te Tupu Ngātahi Supporting Growth | Takaanini Level Crossing | Landscape, Natural Character and Visual Effects Assessment

Date: 2 June 2023

Status: Final

Revision: 3.0

Prepared By: Maddie Palmer

Reviewed By: Catherine Hamilton

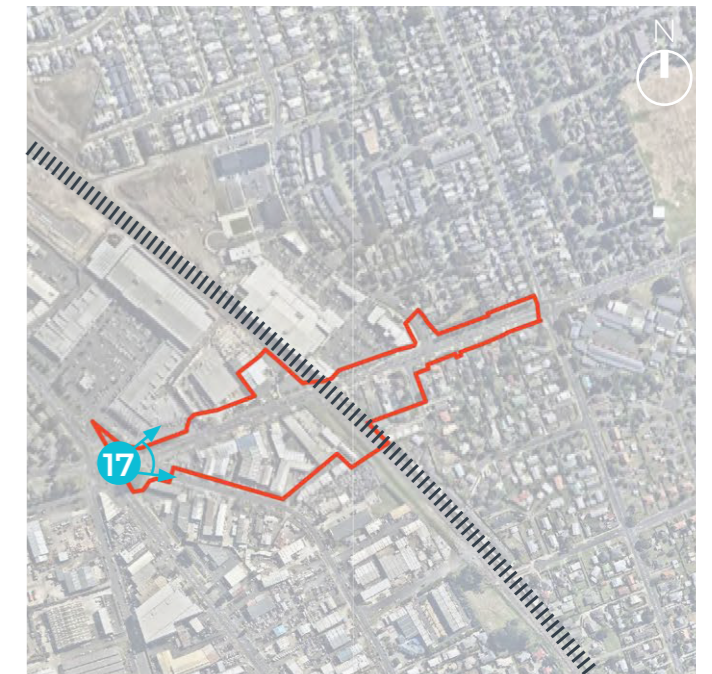
Figure: LA024

Photo Location: -37.0489243, 174.9333109

Photo taken using a Canon EOS 5D Camera with 50mm lens at 3.10pm on 22/11/2022.

wsp

Prepared by WSP NZ for Te
Tupu Ngātahi Supporting
Growth Alliance



VP 17: View from the junction of Great South Road and Walters Road looking east towards the NIMT