

Watercare Services Limited

Private Bag 94010
Auckland 2241

www.watercare.co.nz

Customer service line

Mon to Fri 7.30 to 6pm
09 442 2222

info@water.co.nz



Fault line

24 hours
09 442 2222

Free text 3130

faults@water.co.nz

1 November 2021

Jignesh Patel
Maven Associates
5 Owens Road, Epsom
1023

Dear Jignesh

Re: Water and Wastewater Capacity Check to allow for residential development at 41-43 Brigham Creek Road, Whenuapai
Watercare application number CON 97416

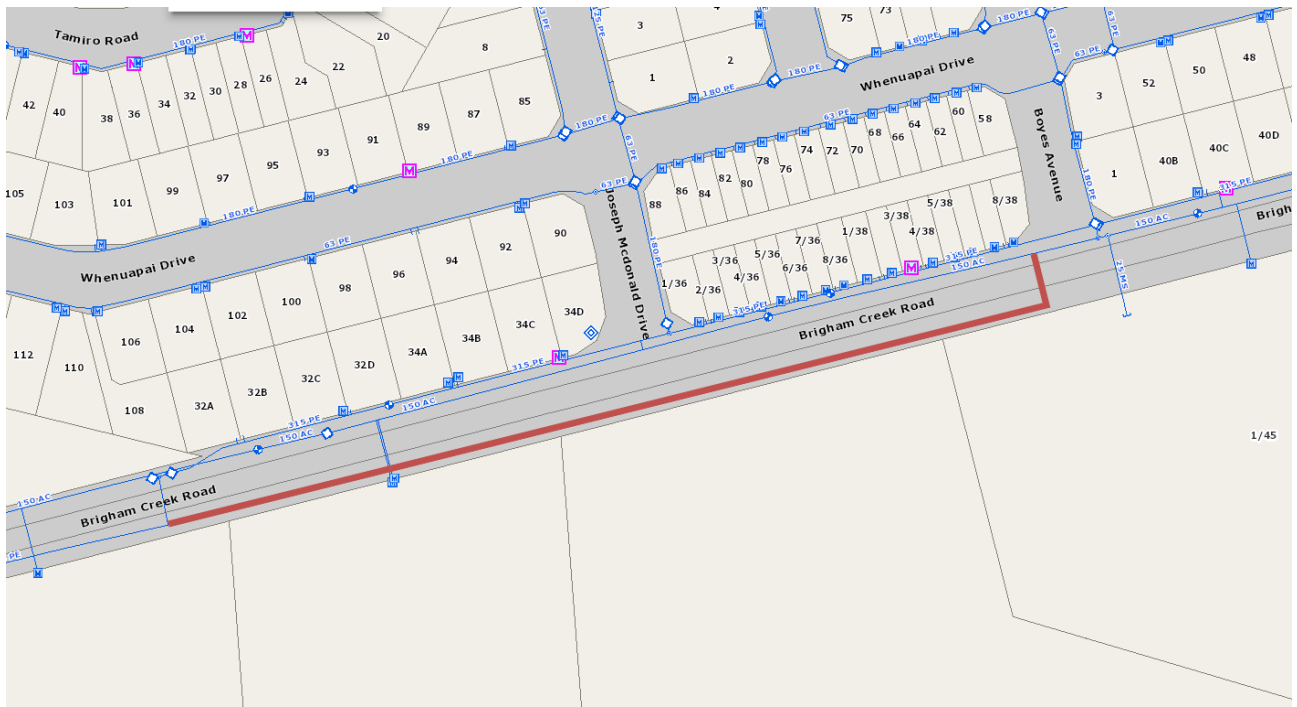
We have completed an assessment of the water and wastewater capacity for the proposed development as stated in the above application, at 41-43 Brigham Creek Road, Whenuapai.

For the wastewater servicing as previously stated in the email from Ilze Gotelli:

- There are currently no wastewater services available for this site.
- The site will in the future be serviced by the future Brigham Creek pumping station, currently scheduled for completion in 2024. With the current Covid 19 restrictions this may be extended.
- A public pumping station will need to be constructed to convey the combined flows from the entire catchment that could reasonably gravitate to this pumping station, to the future Brigham Creek pumping station. From initial investigations this is likely to include all of 41-43 Brigham Creek Road, all of 45 Brigham Creek Road and approximately 1.6ha of the north-western corner of 131-137 Brigham Creek Road.
- A plan showing the entire catchment area of the proposed public pumping station should be included as part of a resource consent application.

For the water supply servicing:

- The design should include the extension of the 315 PE watermain along the entire development frontage on Brigham Creek Road (as per CoP) with connections as shown in the sketch below.
- With the assumption of a connection from Brigham Creek Road watermains only in the early stages the design needs to ensure resilience considerations and sizing for firefighting requirements.
- With the development also fronting Mamari Road, future watermains will need to be installed along the frontage for future network extensions (sizing of the watermain would be 200mm ID) as per long term strategy allowing later commissioning.



Please note that the timing of development is critical, and we will need to assess future upgrade requirements in more detail when you apply for resource consent. You will need to include the following information in the infrastructure report when you lodge your resource consent application:

- A completed water and wastewater planning assessment form (available on the Watercare website)
- A plan showing the proposed location and size of the water and wastewater connections
- Design flows in accordance with the Watercare Code of Practice for Development. For the public wastewater pumping station to be constructed as part of this development, the calculations shall consider the entire wastewater catchment that may drain to this pumping station.
- Contributing catchment analysis showing calculations
- Hydrant flow test results

If applicable the following requirements may also need to be included in the infrastructure report:

- Confirmation of development scale and any changes
- Acknowledgement of additional development in the contributing catchment which may affect water and wastewater network capacity
- Acknowledgement of any catchment network changes as a result of upgrades or any additional information that was not taken into consideration as part of this assessment
- Watercare would like to accept gravity option only no private pumps will be accepted. There is no cost sharing option available

Please note, as part of the water reticulation design, the infrastructure report should consider boost pumping to upper levels of buildings of more than two storeys. Once consented, it is the responsibility of the building owner to conduct a periodic review of sprinkler design flow and pressure against available pressure and flow from the Watercare network.

Yours faithfully,



Lars Fog
Development Engineer,
Watercare Services Limited