



- | Noise Level | PPFs Altered |
|---|---|
| dB L _{Aeq} (24h) | dB L _{Aeq} (24h) |
| 55 - 60 | < 64 |
| 60 - 65 | Other Buildings |
| 65 - 70 | Roads |
| > 70 | Assessment Area |

This map contains data derived in part or wholly from sources other than those party to the Supporting Growth Alliance, and therefore, no representations or warranties are made by those party to the Supporting Growth Alliance as to the accuracy or completeness of this information.

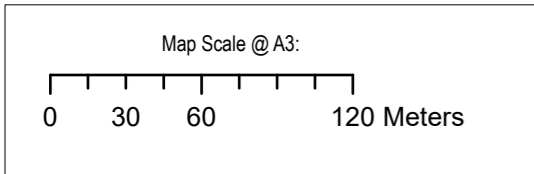
Map intended for distribution as a PDF document.
Scale may be incorrect when printed.

Contains information sourced from LINZ. Crown Copyright Reserved.

Unitary plan data sourced from Auckland Council published web services.
Legend information can be viewed on Auckland Council unitary plan viewer.

Linework shown on this plan is conceptual only.
Not to be used for construction.

LINZ, Esri Community Maps Contributors, LINZ, Esri, HERE, Garmin, Foursquare, METI/NASA, USGS



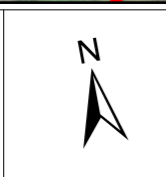
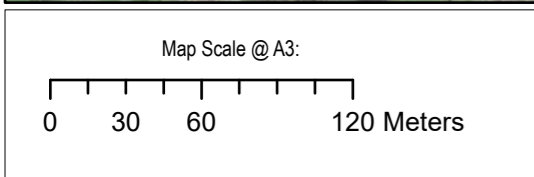
Revision	Author	Verified	Approved	Date
1	DA	SJ	CD	23/11/22

Supporting Growth
NoR W4 - Mitigated Road Traffic Noise 2

Client: Supporting Growth
Project: North West Package



Discipline: GIS
Drawing No: SGA-NOR-W1-000



Revision	Author	Verified	Approved	Date
1	DA	SJ	CD	23/11/22

Supporting Growth
 NoR W4 - Mitigated Road Traffic Noise 2

Client: Supporting Growth
 Project: North West Package



Discipline: GIS
 Drawing No: SGA-NOR-W1-000



Noise Level	PPFs Altered
dB $L_{Aeq}(24h)$	dB $L_{Aeq}(24h)$
55 - 60	< 64
60 - 65	Other Buildings
65 - 70	Roads
> 70	Assessment Area

This map contains data derived in part or wholly from sources other than those party to the Supporting Growth Alliance, and therefore, no representations or warranties are made by those party to the Supporting Growth Alliance as to the accuracy or completeness of this information.

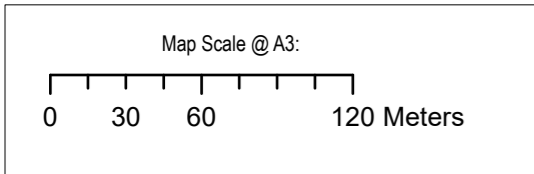
Map intended for distribution as a PDF document.
Scale may be incorrect when printed.

Contains information sourced from LINZ. Crown Copyright Reserved.

Unitary plan data sourced from Auckland Council published web services.
Legend information can be viewed on Auckland Council unitary plan viewer.

Linework shown on this plan is conceptual only.
Not to be used for construction.

LINZ, Esri Community Maps Contributors, LINZ, Esri, HERE, Garmin, Foursquare, METI/NASA, USGS



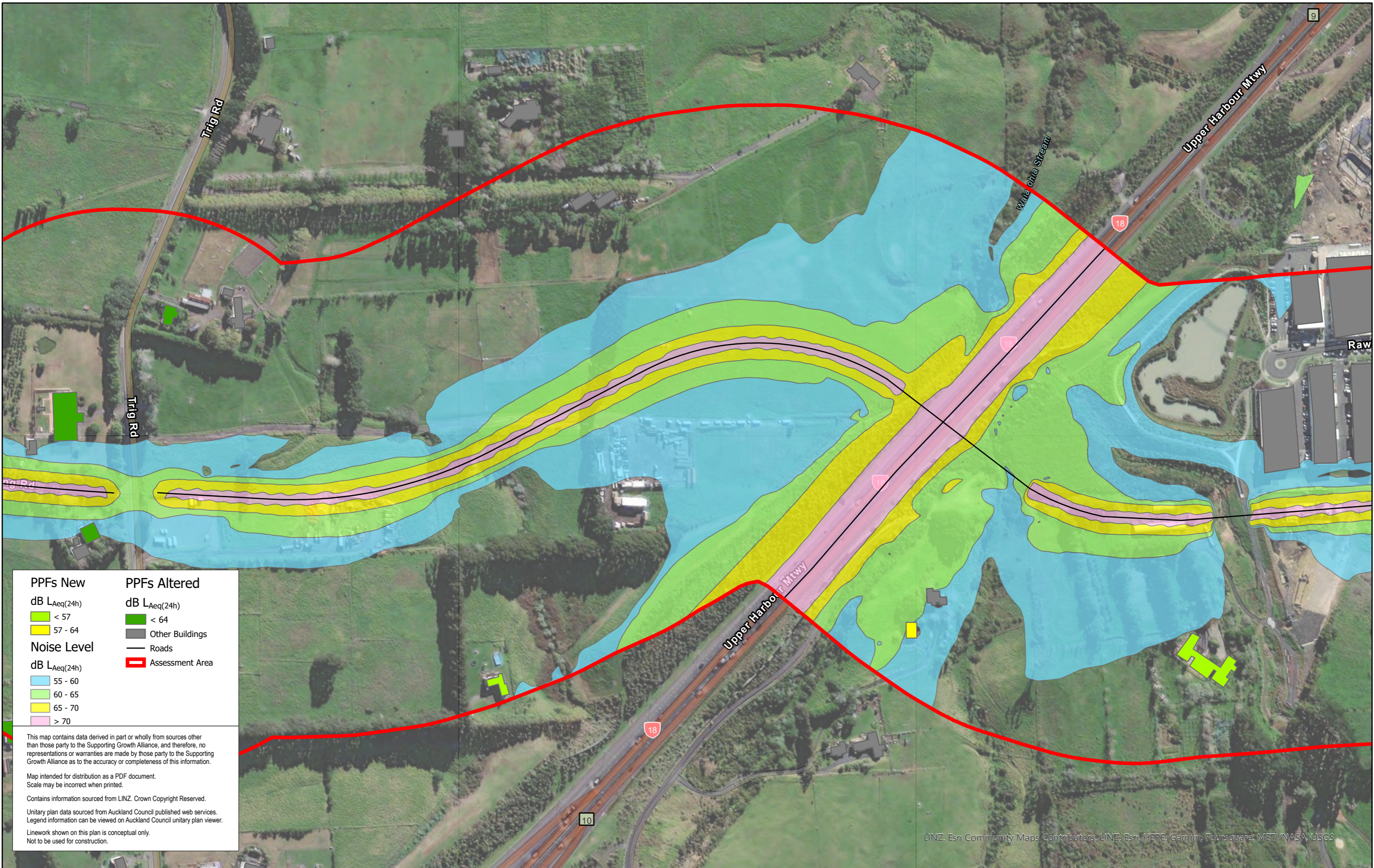
Revision	Author	Verified	Approved	Date
1	DA	SJ	CD	23/11/22

Supporting Growth
NoR W4 - Mitigated Road Traffic Noise 2

Client: Supporting Growth
Project: North West Package



Discipline: GIS
Drawing No: SGA-NOR-W1-000



PPFs New		PPFs Altered	
dB $L_{Aeq}(24h)$		dB $L_{Aeq}(24h)$	
	< 57		< 64
	57 - 64		Other Buildings
Noise Level		— Roads	
dB $L_{Aeq}(24h)$		Assessment Area	
	55 - 60		
	60 - 65		
	65 - 70		
	> 70		

This map contains data derived in part or wholly from sources other than those party to the Supporting Growth Alliance, and therefore, no representations or warranties are made by those party to the Supporting Growth Alliance as to the accuracy or completeness of this information.

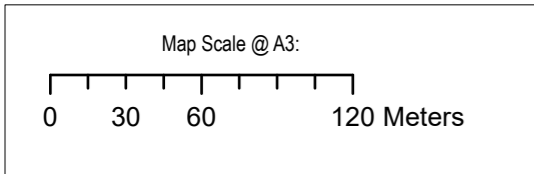
Map intended for distribution as a PDF document.
Scale may be incorrect when printed.

Contains information sourced from LINZ. Crown Copyright Reserved.

Unitary plan data sourced from Auckland Council published web services.
Legend information can be viewed on Auckland Council unitary plan viewer.

Linework shown on this plan is conceptual only.
Not to be used for construction.

LINZ, Esri Community Maps Contributors, LINZ, Esri, HERE, Garmin, Foursquare, METI/NASA, USGS



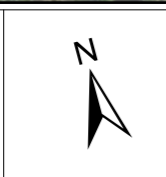
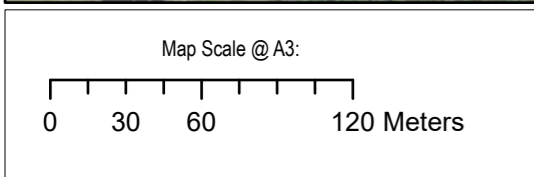
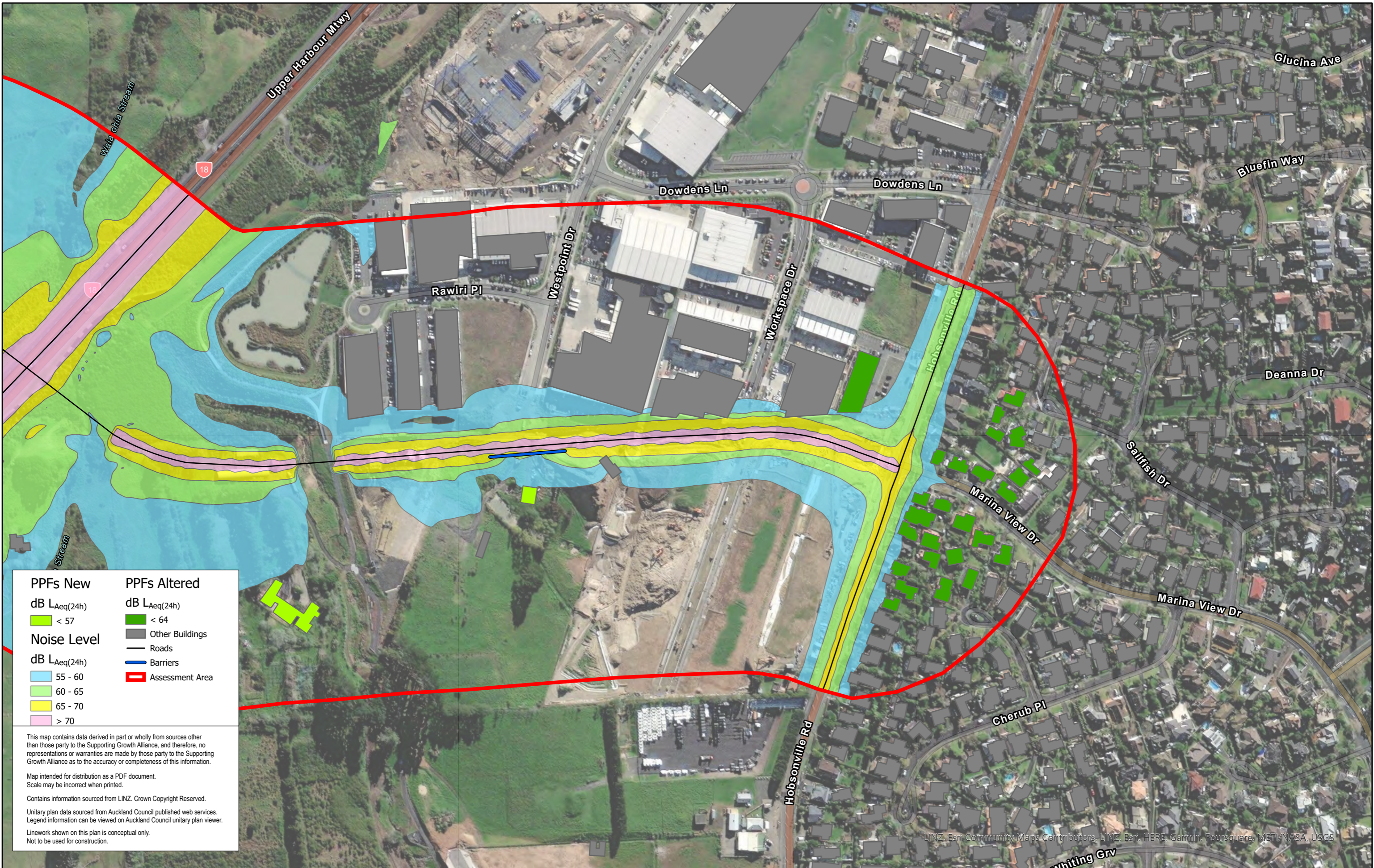
Revision	Author	Verified	Approved	Date
1	DA	SJ	CD	23/11/22

Supporting Growth
NoR W4 - Mitigated Road Traffic Noise 2

Client: Supporting Growth
Project: North West Package



Discipline: GIS
Drawing No: SGA-NOR-W1-000



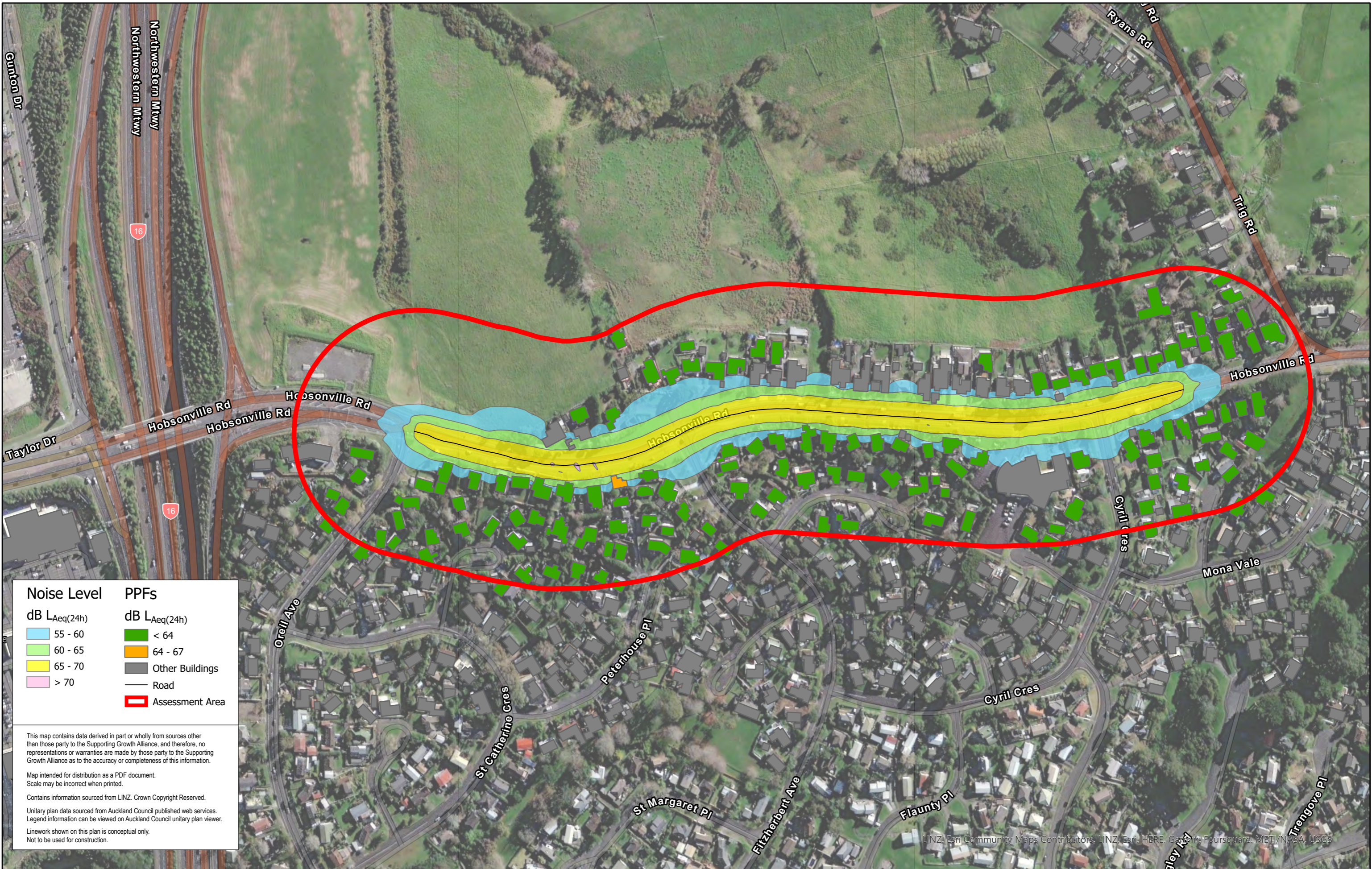
Revision	Author	Verified	Approved	Date
1	DA	SJ	CD	23/11/22

Supporting Growth
 NoR W4 - Mitigated Road Traffic Noise 2

Client: Supporting Growth
 Project: North West Package



Discipline: GIS
 Drawing No: SGA-NOR-W1-000



Noise Level		PPFs	
dB L _{Aeq} (24h)		dB L _{Aeq} (24h)	
■	55 - 60	■	< 64
■	60 - 65	■	64 - 67
■	65 - 70	■	Other Buildings
■	> 70	—	Road
			Assessment Area

This map contains data derived in part or wholly from sources other than those party to the Supporting Growth Alliance, and therefore, no representations or warranties are made by those party to the Supporting Growth Alliance as to the accuracy or completeness of this information.

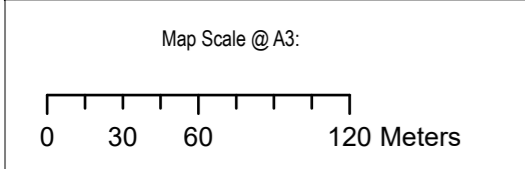
Map intended for distribution as a PDF document.
Scale may be incorrect when printed.

Contains information sourced from LINZ. Crown Copyright Reserved.

Unitary plan data sourced from Auckland Council published web services.
Legend information can be viewed on Auckland Council unitary plan viewer.

Linework shown on this plan is conceptual only.
Not to be used for construction.

LINZ, Esri Community Maps Contributors, LINZ, Esri, HBRE, Garmin, Foursquare, METI/NASA, USGS



Revision	Author	Verified	Approved	Date	Title:
1	DA	SJ	CD	23/11/22	

Supporting Growth
NoR W5 - Existing Road Traffic Noise

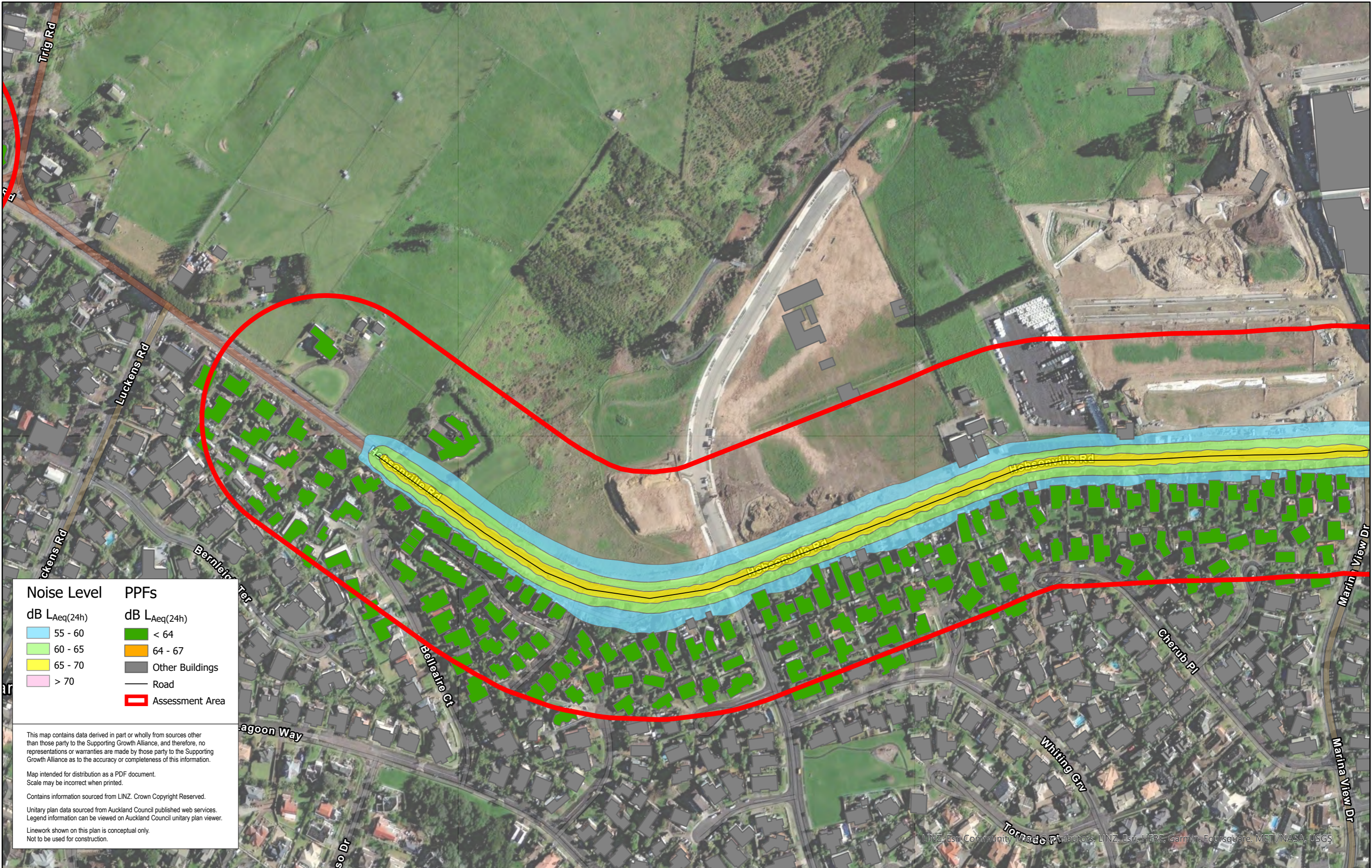
Client: Supporting Growth

Project: North West Package



Discipline: GIS

Drawing No: SGA-NOR-W1-000



Noise Level	PPFs
dB L _{Aeq} (24h)	dB L _{Aeq} (24h)
55 - 60	< 64
60 - 65	64 - 67
65 - 70	Other Buildings
> 70	Road
	Assessment Area

This map contains data derived in part or wholly from sources other than those party to the Supporting Growth Alliance, and therefore, no representations or warranties are made by those party to the Supporting Growth Alliance as to the accuracy or completeness of this information.

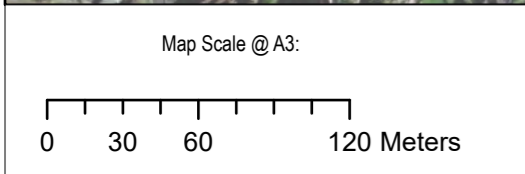
Map intended for distribution as a PDF document.
Scale may be incorrect when printed.

Contains information sourced from LINZ. Crown Copyright Reserved.

Unitary plan data sourced from Auckland Council published web services.
Legend information can be viewed on Auckland Council unitary plan viewer.

Linework shown on this plan is conceptual only.
Not to be used for construction.

LINZ, Esri, Community Map Contributors, LINZ, Esri, HERE, Garmin, Foursquare, METI/NASA, USGS



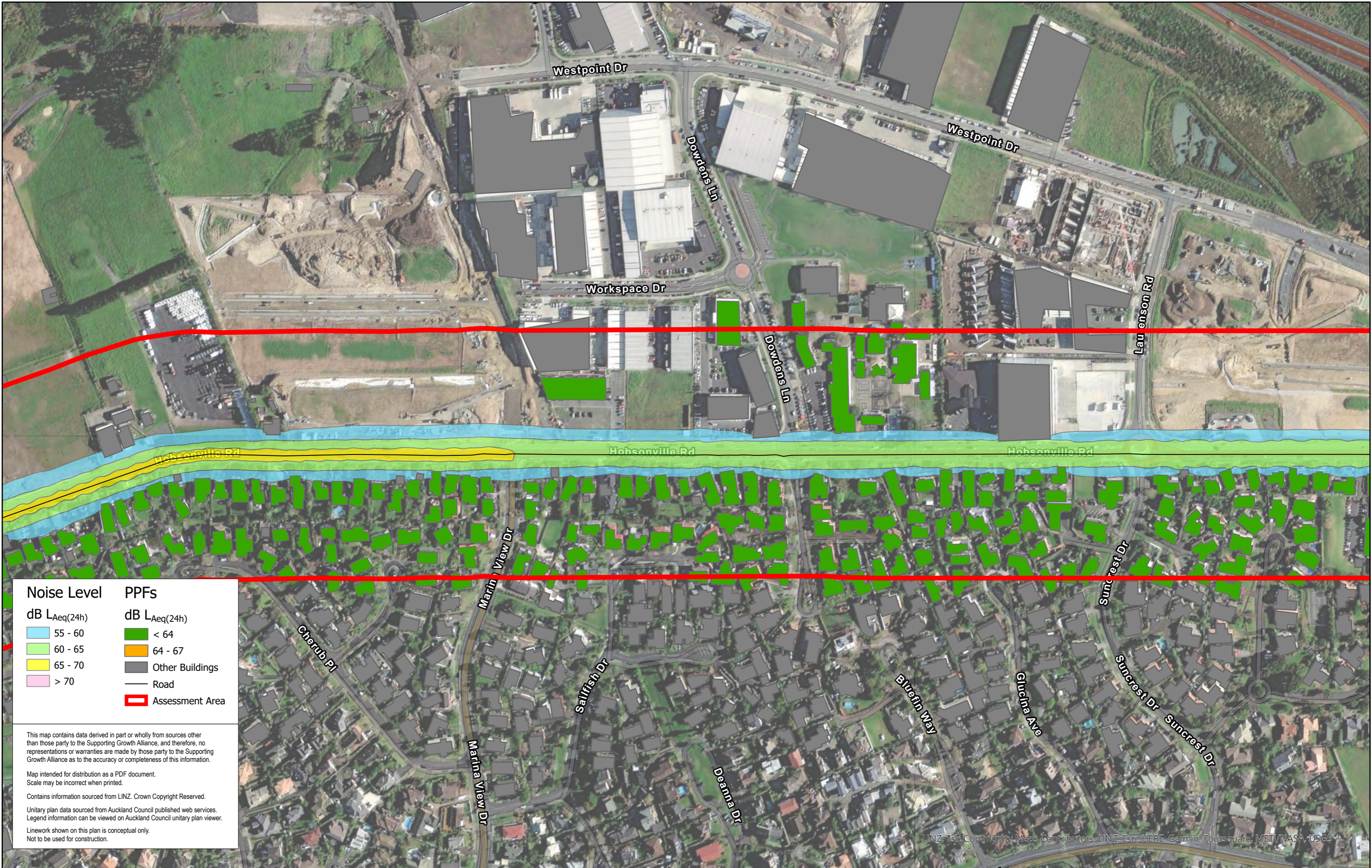
Revision	Author	Verified	Approved	Date	Title:
1	DA	SJ	CD	23/11/22	

Supporting Growth
NoR W5 - Existing Road Traffic Noise

Client: Supporting Growth
Project: North West Package



Discipline: GIS
Drawing No: SGA-NOR-W1-000



Noise Level	PPFs
dB L _{Aeq} (24h)	dB L _{Aeq} (24h)
55 - 60	< 64
60 - 65	64 - 67
65 - 70	Other Buildings
> 70	Road
	Assessment Area

This map contains data derived in part or wholly from sources other than those party to the Supporting Growth Alliance, and therefore, no representations or warranties are made by those party to the Supporting Growth Alliance as to the accuracy or completeness of this information.

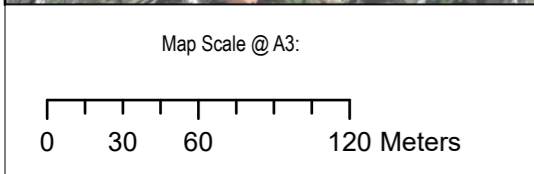
Map intended for distribution as a PDF document.
Scale may be incorrect when printed.

Contains information sourced from LINZ. Crown Copyright Reserved.

Unitary plan data sourced from Auckland Council published web services.
Legend information can be viewed on Auckland Council unitary plan viewer.

Linework shown on this plan is conceptual only.
Not to be used for construction.

LINZ, Esri, Community Maps Contributors, LINZ, Esri, HERE, Garmin, Foursquare, MET/NASA, USGS



Revision	Author	Verified	Approved	Date
1	DA	SJ	CD	23/11/22

Supporting Growth
NoR W5 - Existing Road Traffic Noise

Client: Supporting Growth
Project: North West Package



Discipline: GIS
Drawing No: SGA-NOR-W1-000



Noise Level		PPFs	
dB L _{Aeq} (24h)		dB L _{Aeq} (24h)	
Light Blue	55 - 60	Green	< 64
Light Green	60 - 65	Orange	64 - 67
Yellow	65 - 70	Grey	Other Buildings
Pink	> 70	Black line	Road
		Red outline	Assessment Area

This map contains data derived in part or wholly from sources other than those party to the Supporting Growth Alliance, and therefore, no representations or warranties are made by those party to the Supporting Growth Alliance as to the accuracy or completeness of this information.

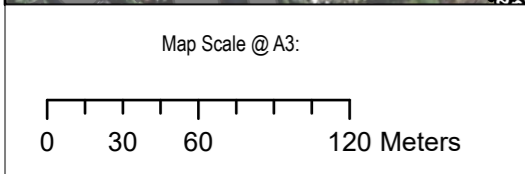
Map intended for distribution as a PDF document.
Scale may be incorrect when printed.

Contains information sourced from LINZ. Crown Copyright Reserved.

Unitary plan data sourced from Auckland Council published web services.
Legend information can be viewed on Auckland Council unitary plan viewer.

Linework shown on this plan is conceptual only.
Not to be used for construction.

LINZ, Esri, Community Maps Contributors, LINZ, Esri, HERE, Garmin, Foursquare, METI/NASA, USGS



Revision	Author	Verified	Approved	Date	Title:
1	DA	SJ	CD	23/11/22	

Supporting Growth
NoR W5 - Existing Road Traffic Noise

Client: Supporting Growth
Project: North West Package



Discipline: GIS
Drawing No: SGA-NOR-W1-000



Noise Level	PPFs
dB L _{Aeq} (24h)	dB L _{Aeq} (24h)
55 - 60	< 64
60 - 65	64 - 67
65 - 70	Other Buildings
> 70	Road
	Assessment Area

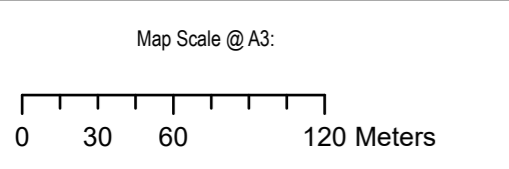
This map contains data derived in part or wholly from sources other than those party to the Supporting Growth Alliance, and therefore, no representations or warranties are made by those party to the Supporting Growth Alliance as to the accuracy or completeness of this information.

Map intended for distribution as a PDF document.
Scale may be incorrect when printed.

Contains information sourced from LINZ. Crown Copyright Reserved.

Unitary plan data sourced from Auckland Council published web services.
Legend information can be viewed on Auckland Council unitary plan viewer.

Linework shown on this plan is conceptual only.
Not to be used for construction.



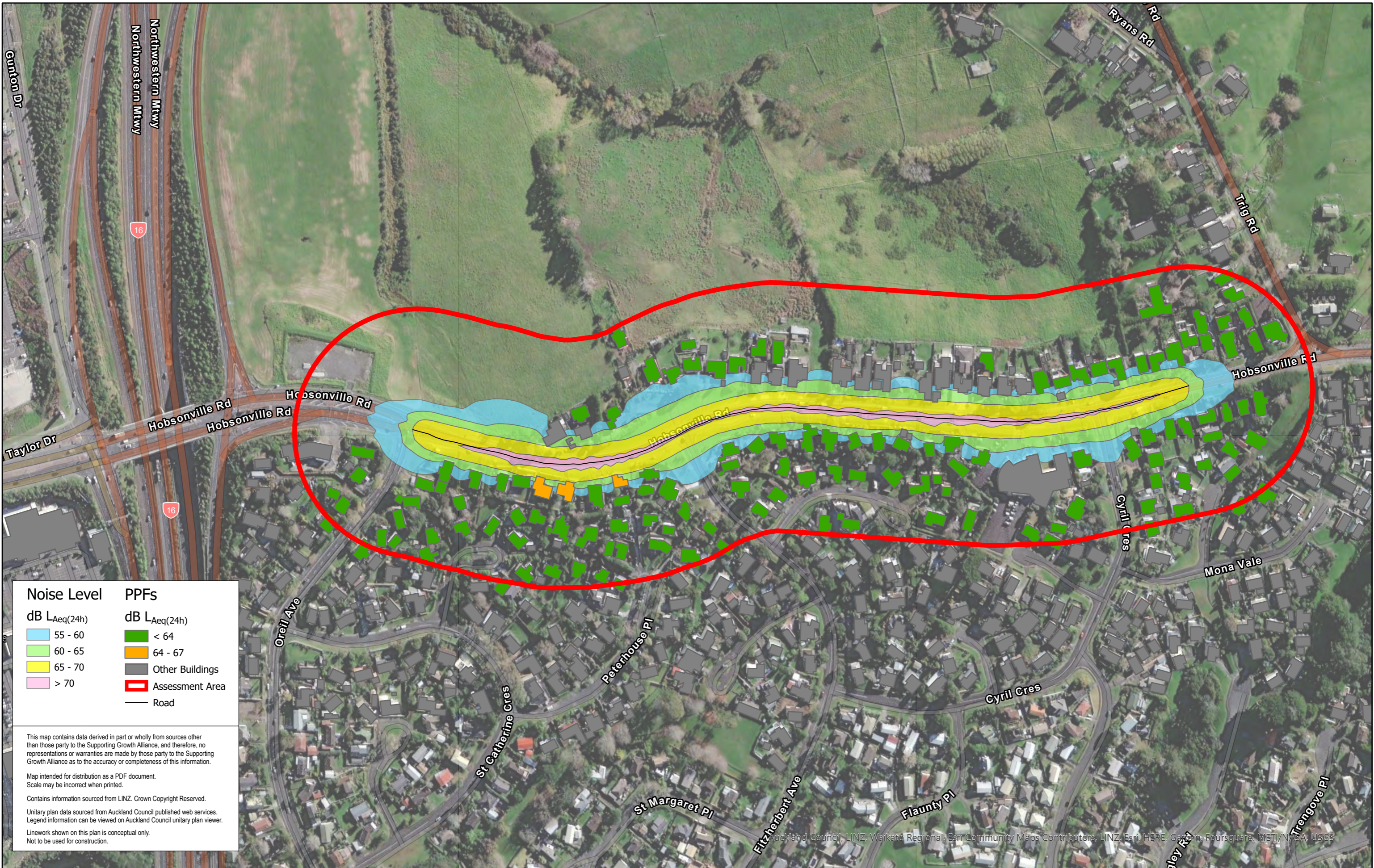
Revision	Author	Verified	Approved	Date
1	DA	SJ	CD	23/11/22

Supporting Growth
NoR W5 - Existing Road Traffic Noise

Client: Supporting Growth
Project: North West Package



Discipline: GIS
Drawing No: SGA-NOR-W1-000



Noise Level		PPFs	
dB L _{Aeq} (24h)		dB L _{Aeq} (24h)	
	55 - 60		< 64
	60 - 65		64 - 67
	65 - 70		Other Buildings
	> 70		Assessment Area
			Road

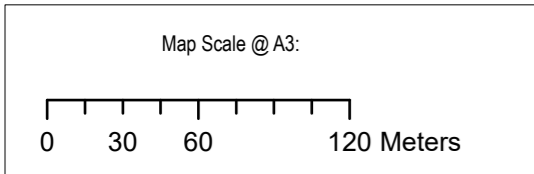
This map contains data derived in part or wholly from sources other than those party to the Supporting Growth Alliance, and therefore, no representations or warranties are made by those party to the Supporting Growth Alliance as to the accuracy or completeness of this information.

Map intended for distribution as a PDF document.
Scale may be incorrect when printed.

Contains information sourced from LINZ. Crown Copyright Reserved.

Unitary plan data sourced from Auckland Council published web services.
Legend information can be viewed on Auckland Council unitary plan viewer.

Linework shown on this plan is conceptual only.
Not to be used for construction.



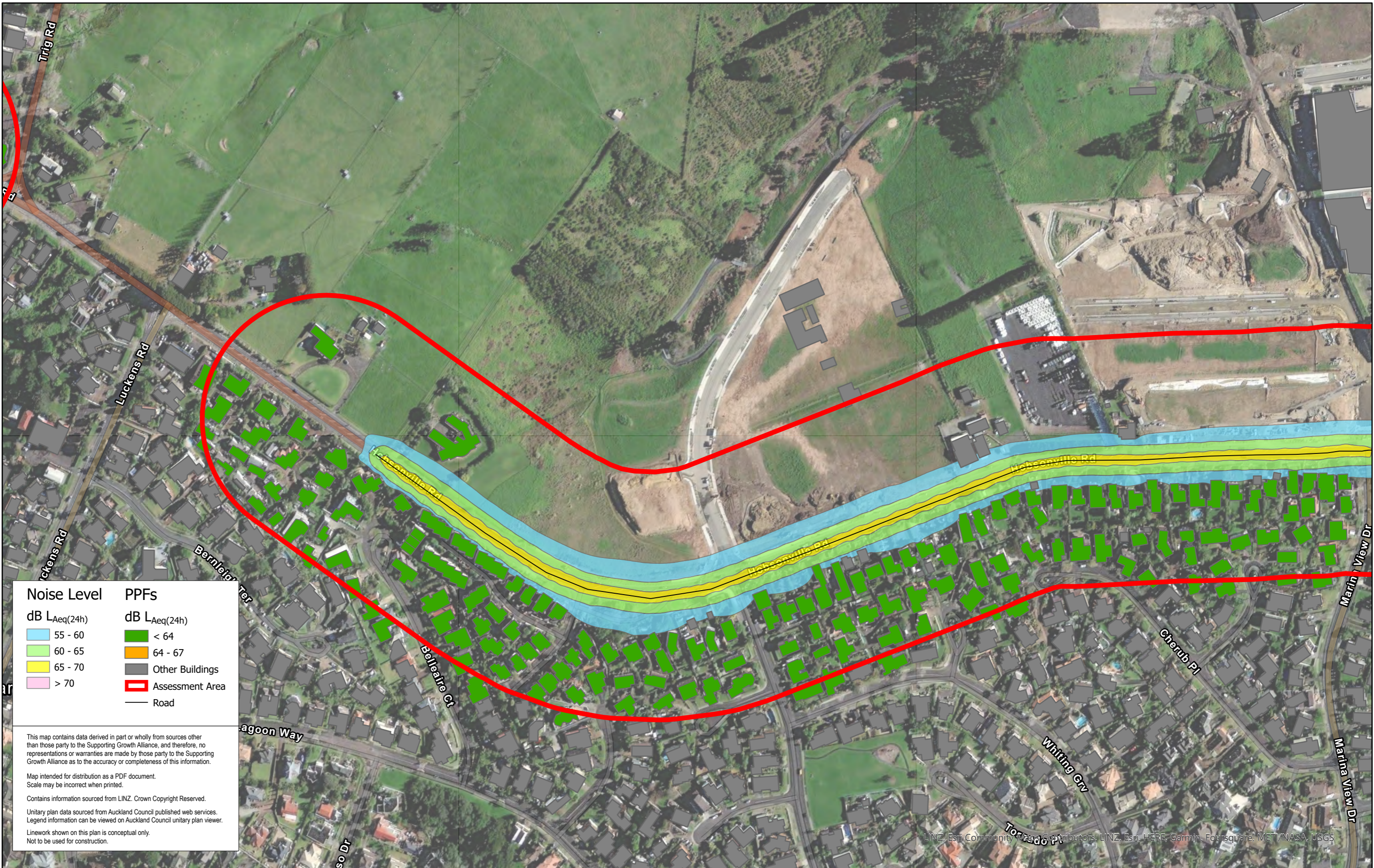
Revision	Author	Verified	Approved	Date
1	Author	DRAFT	DRAFT	dd/mm/yyyy

Supporting Growth
NoR W5 - Do Nothing Road Traffic Noise

Client: Supporting Growth
Project: North West Package



Discipline: GIS
Drawing No: SGA-NOR-W1-000



Noise Level	PPFs
dB L _{Aeq} (24h)	dB L _{Aeq} (24h)
55 - 60	< 64
60 - 65	64 - 67
65 - 70	Other Buildings
> 70	Assessment Area
	Road

This map contains data derived in part or wholly from sources other than those party to the Supporting Growth Alliance, and therefore, no representations or warranties are made by those party to the Supporting Growth Alliance as to the accuracy or completeness of this information.

Map intended for distribution as a PDF document.
Scale may be incorrect when printed.

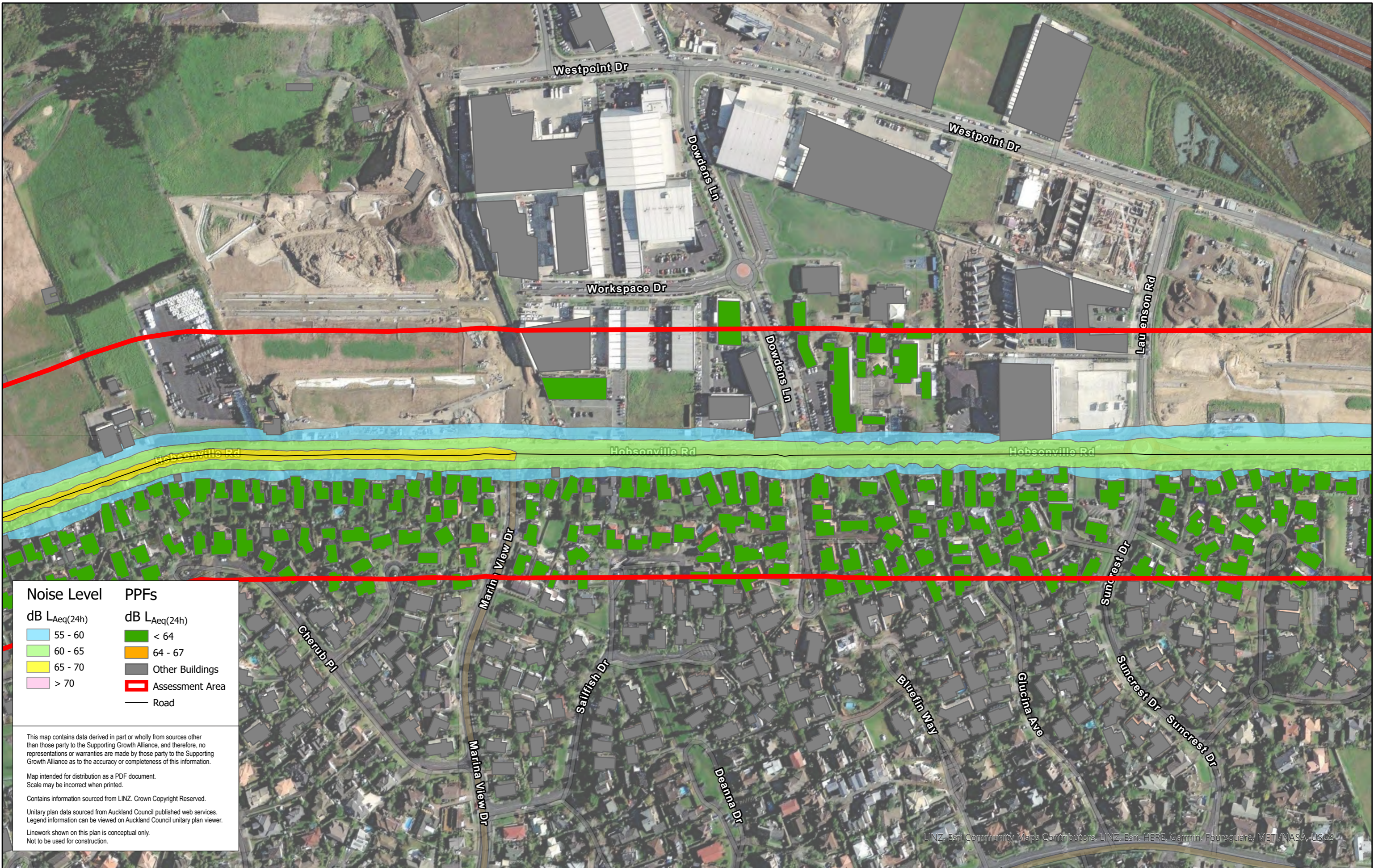
Contains information sourced from LINZ. Crown Copyright Reserved.

Unitary plan data sourced from Auckland Council published web services.
Legend information can be viewed on Auckland Council unitary plan viewer.

Linework shown on this plan is conceptual only.
Not to be used for construction.

LINZ, Esri, Community Map Contributors, LINZ, Esri, HERE, Garmin, Foursquare, MET, NASA, USGS

Map Scale @ A3: 		<table border="1"> <thead> <tr> <th>Revision</th> <th>Author</th> <th>Verified</th> <th>Approved</th> <th>Date</th> </tr> </thead> <tbody> <tr> <td>1</td> <td>Author</td> <td>DRAFT</td> <td>DRAFT</td> <td>dd/mm/yyyy</td> </tr> </tbody> </table>	Revision	Author	Verified	Approved	Date	1	Author	DRAFT	DRAFT	dd/mm/yyyy	Supporting Growth NoR W5 - Do Nothing Road Traffic Noise	Client: Supporting Growth Project: North West Package		Discipline: GIS Drawing No: SGA-NOR-W1-000
		Revision	Author	Verified	Approved	Date										
1	Author	DRAFT	DRAFT	dd/mm/yyyy												



Noise Level	PPFs
dB L _{Aeq} (24h)	dB L _{Aeq} (24h)
55 - 60	< 64
60 - 65	64 - 67
65 - 70	Other Buildings
> 70	Assessment Area
	Road

This map contains data derived in part or wholly from sources other than those party to the Supporting Growth Alliance, and therefore, no representations or warranties are made by those party to the Supporting Growth Alliance as to the accuracy or completeness of this information.

Map intended for distribution as a PDF document.
Scale may be incorrect when printed.

Contains information sourced from LINZ. Crown Copyright Reserved.

Unitary plan data sourced from Auckland Council published web services.
Legend information can be viewed on Auckland Council unitary plan viewer.

Linework shown on this plan is conceptual only.
Not to be used for construction.

LINZ, Esri Community Maps Contributors, LINZ, Esri, HERE, Garmin, Foursquare, METI/NASA, USGS

Map Scale @ A3: 		<table border="1"> <thead> <tr> <th>Revision</th> <th>Author</th> <th>Verified</th> <th>Approved</th> <th>Date</th> </tr> </thead> <tbody> <tr> <td>1</td> <td>Author</td> <td>DRAFT</td> <td>DRAFT</td> <td>dd/mm/yyyy</td> </tr> </tbody> </table>	Revision	Author	Verified	Approved	Date	1	Author	DRAFT	DRAFT	dd/mm/yyyy	Supporting Growth NoR W5 - Do Nothing Road Traffic Noise	Client: Supporting Growth Project: North West Package		Discipline: GIS Drawing No: SGA-NOR-W1-000
		Revision	Author	Verified	Approved	Date										
1	Author	DRAFT	DRAFT	dd/mm/yyyy												



Noise Level	PPFs
dB L _{Aeq} (24h)	dB L _{Aeq} (24h)
55 - 60	< 64
60 - 65	64 - 67
65 - 70	Other Buildings
> 70	Assessment Area
	Road

This map contains data derived in part or wholly from sources other than those party to the Supporting Growth Alliance, and therefore, no representations or warranties are made by those party to the Supporting Growth Alliance as to the accuracy or completeness of this information.

Map intended for distribution as a PDF document.
Scale may be incorrect when printed.

Contains information sourced from LINZ. Crown Copyright Reserved.

Unitary plan data sourced from Auckland Council published web services.
Legend information can be viewed on Auckland Council unitary plan viewer.

Linework shown on this plan is conceptual only.
Not to be used for construction.

LINZ, Esri Community Maps Contributors, LINZ, Esri, HERE, Garmin, FourSquare, METI/NASA, USGS

Map Scale @ A3: 		<table border="1"> <thead> <tr> <th>Revision</th> <th>Author</th> <th>Verified</th> <th>Approved</th> <th>Date</th> <th>Title:</th> </tr> </thead> <tbody> <tr> <td>1</td> <td>Author</td> <td>DRAFT</td> <td>DRAFT</td> <td>dd/mm/yyyy</td> <td rowspan="2"> Supporting Growth NoR W5 - Do Nothing Road Traffic Noise </td> </tr> <tr> <td></td> <td></td> <td></td> <td></td> <td></td> </tr> </tbody> </table>	Revision	Author	Verified	Approved	Date	Title:	1	Author	DRAFT	DRAFT	dd/mm/yyyy	Supporting Growth NoR W5 - Do Nothing Road Traffic Noise						Client: Supporting Growth		Discipline: GIS
		Revision	Author	Verified	Approved	Date	Title:															
1	Author	DRAFT	DRAFT	dd/mm/yyyy	Supporting Growth NoR W5 - Do Nothing Road Traffic Noise																	
		Project: North West Package	Drawing No: SGA-NOR-W1-000																			



Noise Level	PPFs
dB LAeq(24h)	dB LAeq(24h)
55 - 60	< 64
60 - 65	64 - 67
65 - 70	Other Buildings
> 70	Assessment Area
	Road

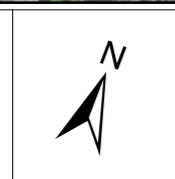
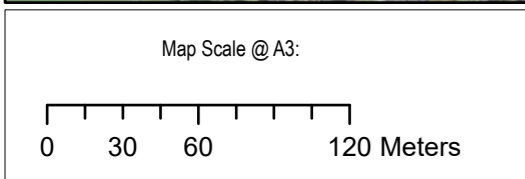
This map contains data derived in part or wholly from sources other than those party to the Supporting Growth Alliance, and therefore, no representations or warranties are made by those party to the Supporting Growth Alliance as to the accuracy or completeness of this information.

Map intended for distribution as a PDF document.
Scale may be incorrect when printed.

Contains information sourced from LINZ. Crown Copyright Reserved.

Unitary plan data sourced from Auckland Council published web services.
Legend information can be viewed on Auckland Council unitary plan viewer.

Linework shown on this plan is conceptual only.
Not to be used for construction.



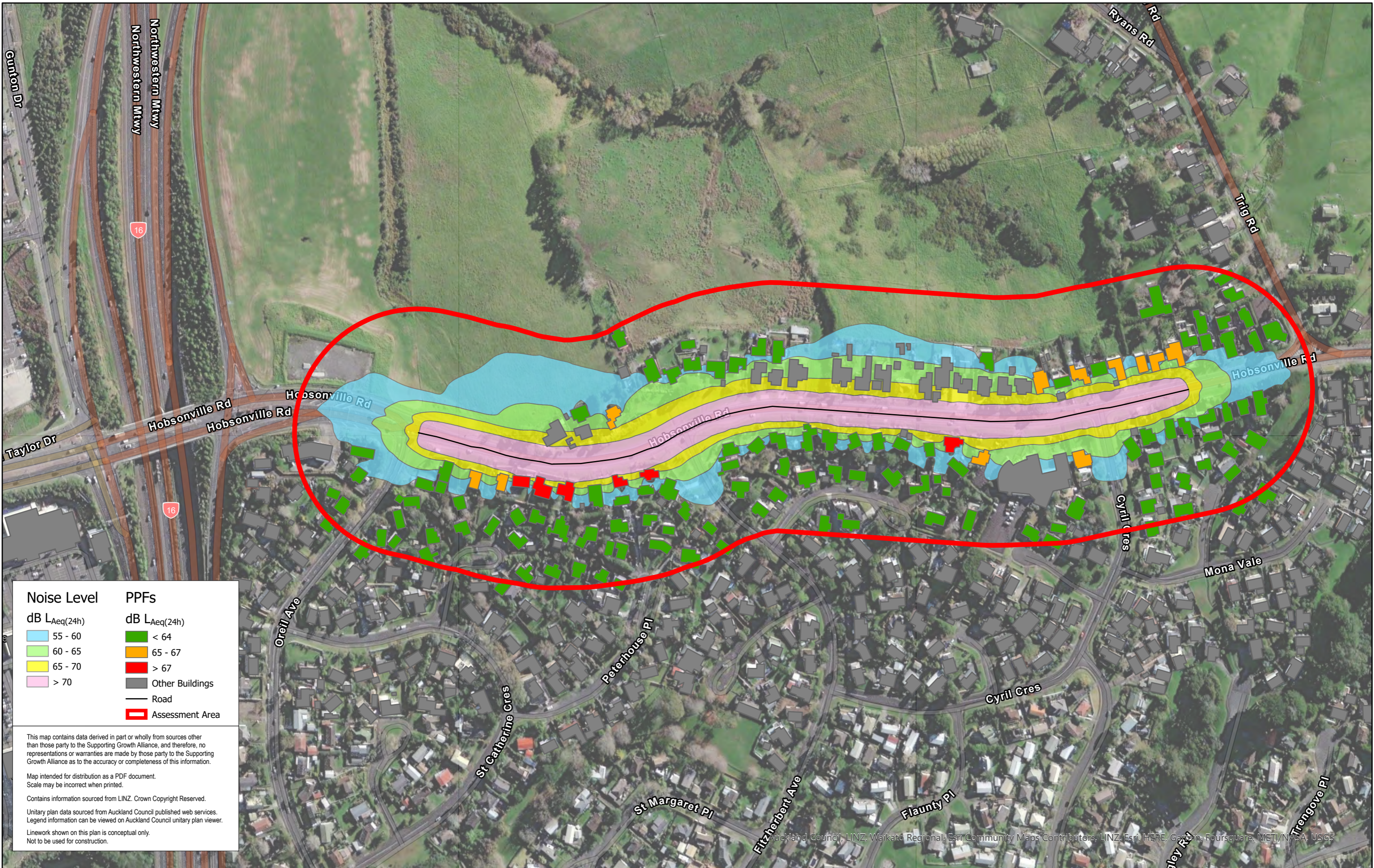
Revision	Author	Verified	Approved	Date
1	Author	DRAFT	DRAFT	dd/mm/yyyy

Supporting Growth
NoR W5 - Do Nothing Road Traffic Noise

Client: Supporting Growth
Project: North West Package



Discipline: GIS
Drawing No: SGA-NOR-W1-000



Noise Level	PPFs
dB L _{Aeq} (24h)	dB L _{Aeq} (24h)
55 - 60	< 64
60 - 65	65 - 67
65 - 70	> 67
> 70	Other Buildings
	Road
	Assessment Area

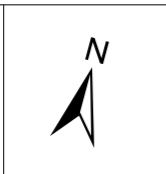
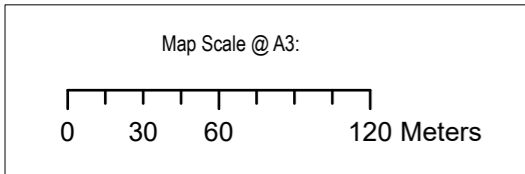
This map contains data derived in part or wholly from sources other than those party to the Supporting Growth Alliance, and therefore, no representations or warranties are made by those party to the Supporting Growth Alliance as to the accuracy or completeness of this information.

Map intended for distribution as a PDF document.
Scale may be incorrect when printed.

Contains information sourced from LINZ. Crown Copyright Reserved.

Unitary plan data sourced from Auckland Council published web services.
Legend information can be viewed on Auckland Council unitary plan viewer.

Linework shown on this plan is conceptual only.
Not to be used for construction.



Revision	Author	Verified	Approved	Date	Title:
1	DA	SJ	CD	23/11/22	Supporting Growth NoR W5 - Do Minimum Road Traffic Noise

Supporting Growth
NoR W5 - Do Minimum Road Traffic Noise

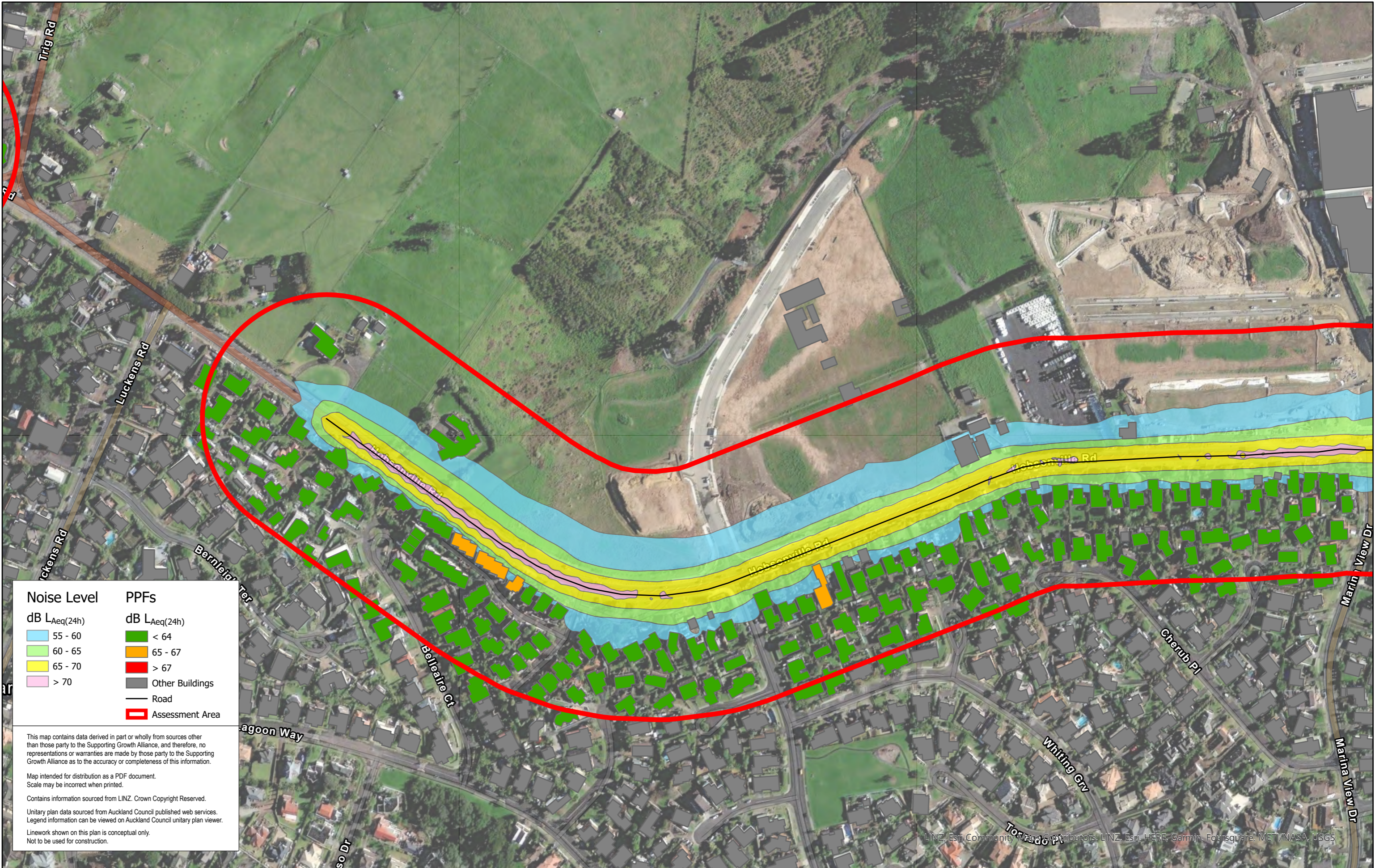
Client: Supporting Growth

Project: North West Package



Discipline: GIS

Drawing No: SGA-NOR-W1-000



Noise Level	PPFs
dB L _{Aeq} (24h)	dB L _{Aeq} (24h)
55 - 60	< 64
60 - 65	65 - 67
65 - 70	> 67
> 70	Other Buildings
	Road
	Assessment Area

This map contains data derived in part or wholly from sources other than those party to the Supporting Growth Alliance, and therefore, no representations or warranties are made by those party to the Supporting Growth Alliance as to the accuracy or completeness of this information.

Map intended for distribution as a PDF document.
Scale may be incorrect when printed.

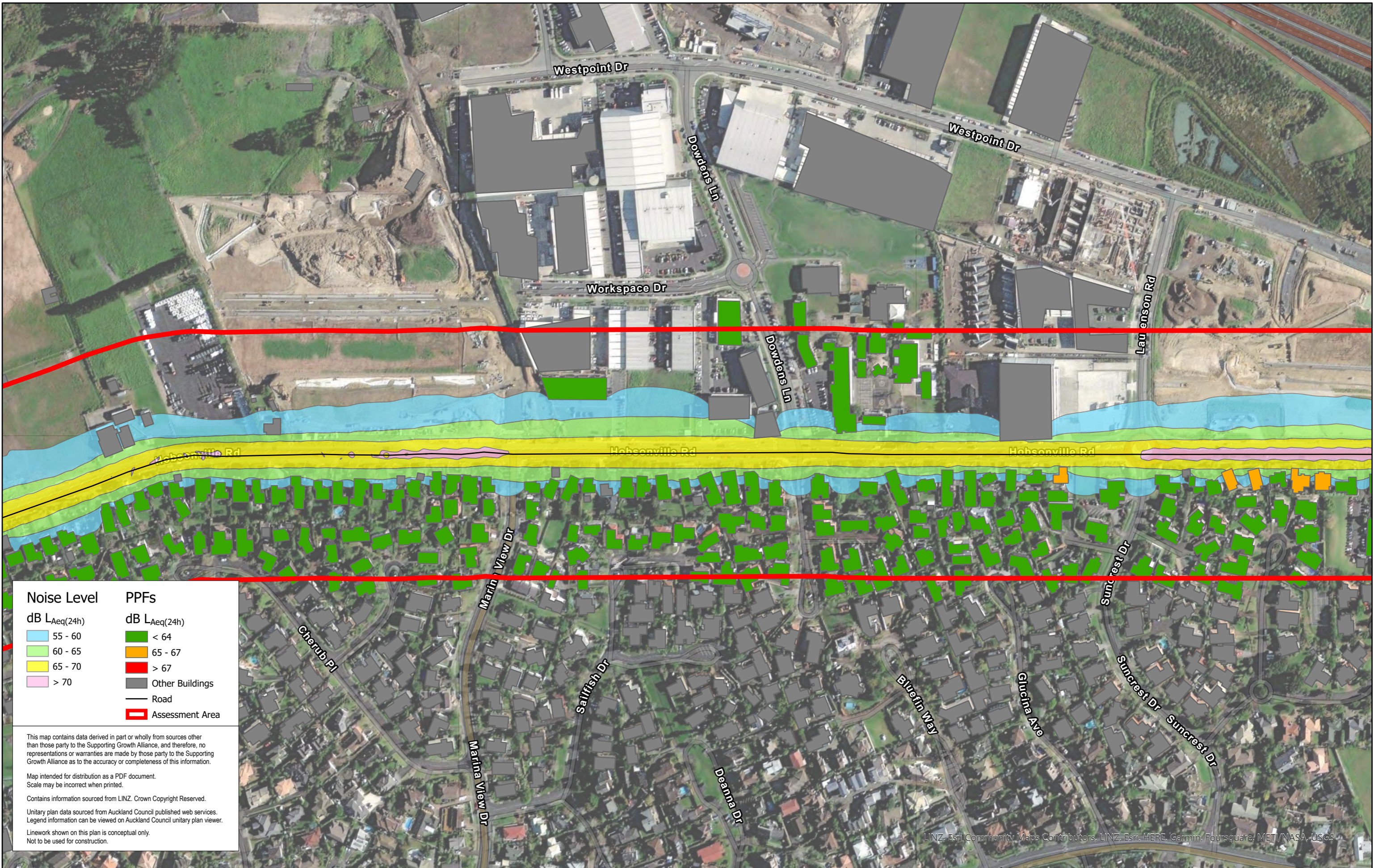
Contains information sourced from LINZ. Crown Copyright Reserved.

Unitary plan data sourced from Auckland Council published web services.
Legend information can be viewed on Auckland Council unitary plan viewer.

Linework shown on this plan is conceptual only.
Not to be used for construction.

LINZ, Esri, Community Maps Contributors, LINZ, Esri, HERE, Garmin, Foursquare, MET, NASA, USGS

Map Scale @ A3: 0 30 60 120 Meters		Revision	Author	Verified	Approved	Date	Title: Supporting Growth NoR W5 - Do Minimum Road Traffic Noise	Client: Supporting Growth		Discipline: GIS
		1	DA	SJ	CD	23/11/22		Project: North West Package		Drawing No: SGA-NOR-W1-000



Noise Level	PPFs
dB $L_{Aeq}(24h)$	dB $L_{Aeq}(24h)$
55 - 60	< 64
60 - 65	65 - 67
65 - 70	> 67
> 70	Other Buildings
	Road
	Assessment Area

This map contains data derived in part or wholly from sources other than those party to the Supporting Growth Alliance, and therefore, no representations or warranties are made by those party to the Supporting Growth Alliance as to the accuracy or completeness of this information.

Map intended for distribution as a PDF document.
Scale may be incorrect when printed.

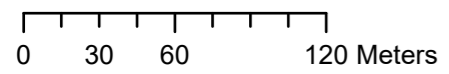
Contains information sourced from LINZ. Crown Copyright Reserved.

Unitary plan data sourced from Auckland Council published web services.
Legend information can be viewed on Auckland Council unitary plan viewer.

Linework shown on this plan is conceptual only.
Not to be used for construction.

LINZ, Esri Community Maps Contributors, LINZ, Esri, HERE, Garmin, Foursquare, METI/NASA, USGS

Map Scale @ A3:



Revision	Author	Verified	Approved	Date
1	DA	SJ	CD	23/11/22

Supporting Growth
NoR W5 - Do Minimum Road Traffic Noise

Client: Supporting Growth
Project: North West Package



Discipline: GIS
Drawing No: SGA-NOR-W1-000



Noise Level	PPFs
dB $L_{Aeq}(24h)$	dB $L_{Aeq}(24h)$
55 - 60	< 64
60 - 65	65 - 67
65 - 70	> 67
> 70	Other Buildings
	Road
	Assessment Area

This map contains data derived in part or wholly from sources other than those party to the Supporting Growth Alliance, and therefore, no representations or warranties are made by those party to the Supporting Growth Alliance as to the accuracy or completeness of this information.

Map intended for distribution as a PDF document.
Scale may be incorrect when printed.

Contains information sourced from LINZ. Crown Copyright Reserved.

Unitary plan data sourced from Auckland Council published web services.
Legend information can be viewed on Auckland Council unitary plan viewer.

Linework shown on this plan is conceptual only.
Not to be used for construction.

LINZ, Esri Community Maps Contributors, LINZ, Esri, HERE, Garmin, FourSquare, METI/NASA, USGS

Map Scale @ A3: 		<table border="1"> <thead> <tr> <th>Revision</th> <th>Author</th> <th>Verified</th> <th>Approved</th> <th>Date</th> <th>Title:</th> </tr> </thead> <tbody> <tr> <td>1</td> <td>DA</td> <td>SJ</td> <td>CD</td> <td>23/11/22</td> <td rowspan="2"> Supporting Growth NoR W5 - Do Minimum Road Traffic Noise </td> </tr> <tr> <td></td> <td></td> <td></td> <td></td> <td></td> </tr> </tbody> </table>	Revision	Author	Verified	Approved	Date	Title:	1	DA	SJ	CD	23/11/22	Supporting Growth NoR W5 - Do Minimum Road Traffic Noise						Client: Supporting Growth		Discipline: GIS
		Revision	Author	Verified	Approved	Date	Title:															
1	DA	SJ	CD	23/11/22	Supporting Growth NoR W5 - Do Minimum Road Traffic Noise																	
		Project: North West Package	Drawing No: SGA-NOR-W1-000																			



Noise Level	PPFs
dB L _{Aeq} (24h)	dB L _{Aeq} (24h)
55 - 60	< 64
60 - 65	65 - 67
65 - 70	> 67
> 70	Other Buildings
	Road
	Assessment Area

This map contains data derived in part or wholly from sources other than those party to the Supporting Growth Alliance, and therefore, no representations or warranties are made by those party to the Supporting Growth Alliance as to the accuracy or completeness of this information.

Map intended for distribution as a PDF document.
Scale may be incorrect when printed.

Contains information sourced from LINZ. Crown Copyright Reserved.

Unitary plan data sourced from Auckland Council published web services.
Legend information can be viewed on Auckland Council unitary plan viewer.

Linework shown on this plan is conceptual only.
Not to be used for construction.

LINZ, Esri Community Maps Contributors, LINZ, Esri, HERE, Garmin, Foursquare, MITI/NASA, USGS

Map Scale @ A3: 		<table border="1"> <thead> <tr> <th>Revision</th> <th>Author</th> <th>Verified</th> <th>Approved</th> <th>Date</th> </tr> </thead> <tbody> <tr> <td>1</td> <td>DA</td> <td>SJ</td> <td>CD</td> <td>23/11/22</td> </tr> </tbody> </table>	Revision	Author	Verified	Approved	Date	1	DA	SJ	CD	23/11/22	Supporting Growth NoR W5 - Do Minimum Road Traffic Noise	Client: Supporting Growth Project: North West Package		Discipline: GIS Drawing No: SGA-NOR-W1-000
		Revision	Author	Verified	Approved	Date										
1	DA	SJ	CD	23/11/22												



Noise Level		PPFs	
dB L _{Aeq} (24h)		dB L _{Aeq} (24h)	
	55 - 60		< 64
	60 - 65		64 - 67
	65 - 70		Other Buildings
	> 70		Road
			Assessment Area

This map contains data derived in part or wholly from sources other than those party to the Supporting Growth Alliance, and therefore, no representations or warranties are made by those party to the Supporting Growth Alliance as to the accuracy or completeness of this information.

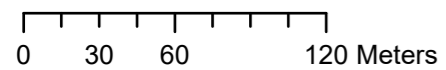
Map intended for distribution as a PDF document.
Scale may be incorrect when printed.

Contains information sourced from LINZ. Crown Copyright Reserved.

Unitary plan data sourced from Auckland Council published web services.
Legend information can be viewed on Auckland Council unitary plan viewer.

Linework shown on this plan is conceptual only.
Not to be used for construction.

Map Scale @ A3:



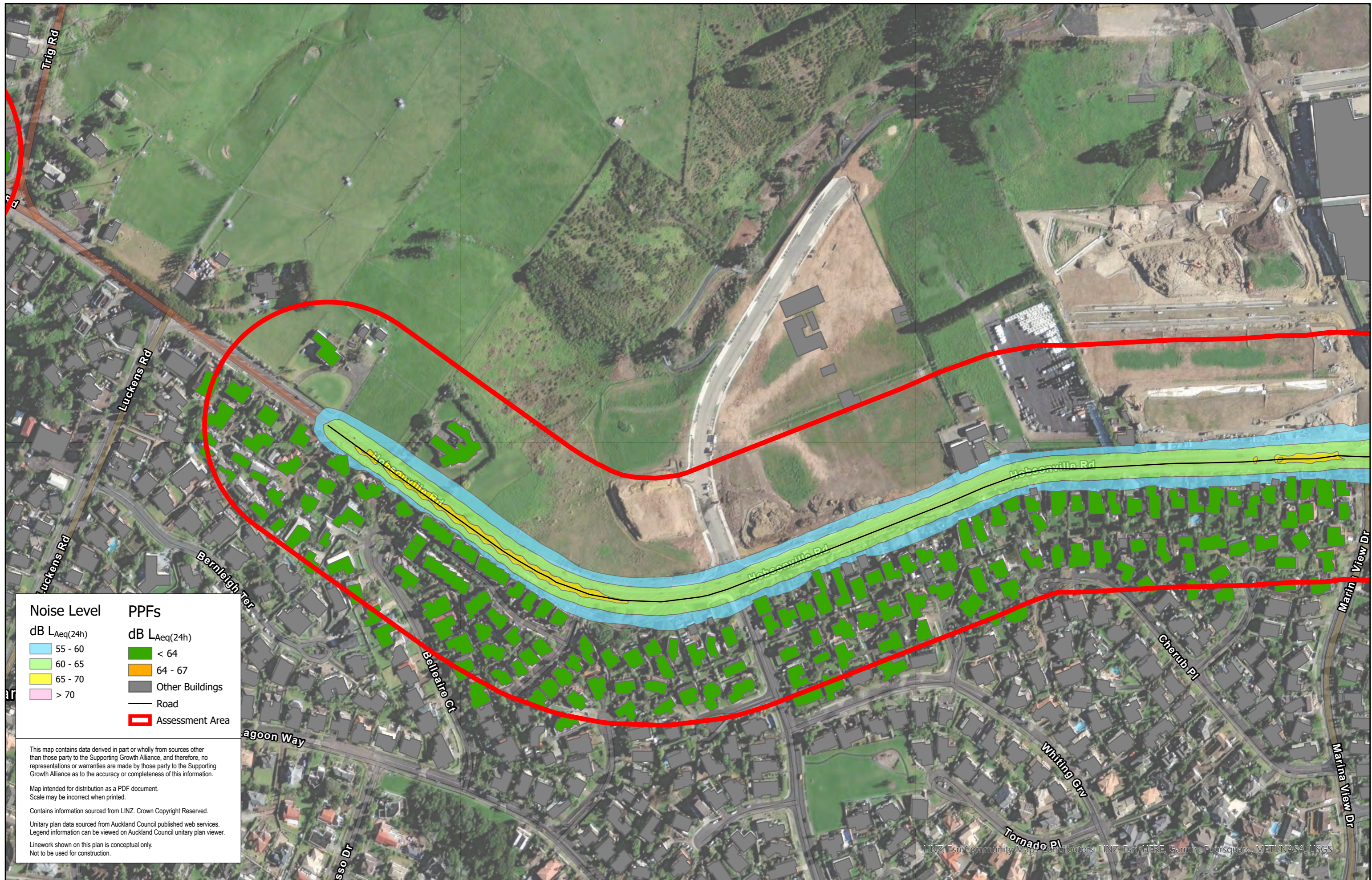
Revision	Author	Verified	Approved	Date
1	Author	DRAFT	DRAFT	dd/mm/yyyy

Title: **Supporting Growth**
NoR W5 - Mitigated Road Traffic Noise

Client: Supporting Growth
Project: North West Package



Discipline: GIS
Drawing No: SGA-NOR-W1-000



Noise Level		PPFs	
dB L _{Aeq} (24h)		dB L _{Aeq} (24h)	
■	55 - 60	■	< 64
■	60 - 65	■	64 - 67
■	65 - 70	■	Other Buildings
■	> 70	—	Road
		□	Assessment Area

This map contains data derived in part or wholly from sources other than those party to the Supporting Growth Alliance, and therefore, no representations or warranties are made by those party to the Supporting Growth Alliance as to the accuracy or completeness of this information.

Map intended for distribution as a PDF document.
Scale may be incorrect when printed.

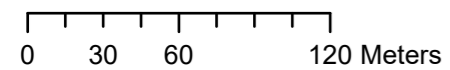
Contains information sourced from LINZ. Crown Copyright Reserved.

Unitary plan data sourced from Auckland Council published web services.
Legend information can be viewed on Auckland Council unitary plan viewer.

Linework shown on this plan is conceptual only.
Not to be used for construction.

LINZ, Esri, Community Maps Contributors, LINZ, Esri, HERE, Garmin, Foursquare, METI/NASA, USGS

Map Scale @ A3:



Revision	Author	Verified	Approved	Date
1	Author	DRAFT	DRAFT	dd/mm/yyyy

Title:

Supporting Growth

NoR W5 - Mitigated Road Traffic Noise

Client:

Supporting Growth

Project:

North West Package



Discipline:

GIS

Drawing No:

SGA-NOR-W1-000



Noise Level		PPFs	
dB LAeq(24h)		dB LAeq(24h)	
	55 - 60		< 64
	60 - 65		64 - 67
	65 - 70		Other Buildings
	> 70		Road
			Assessment Area

This map contains data derived in part or wholly from sources other than those party to the Supporting Growth Alliance, and therefore, no representations or warranties are made by those party to the Supporting Growth Alliance as to the accuracy or completeness of this information.

Map intended for distribution as a PDF document.
Scale may be incorrect when printed.

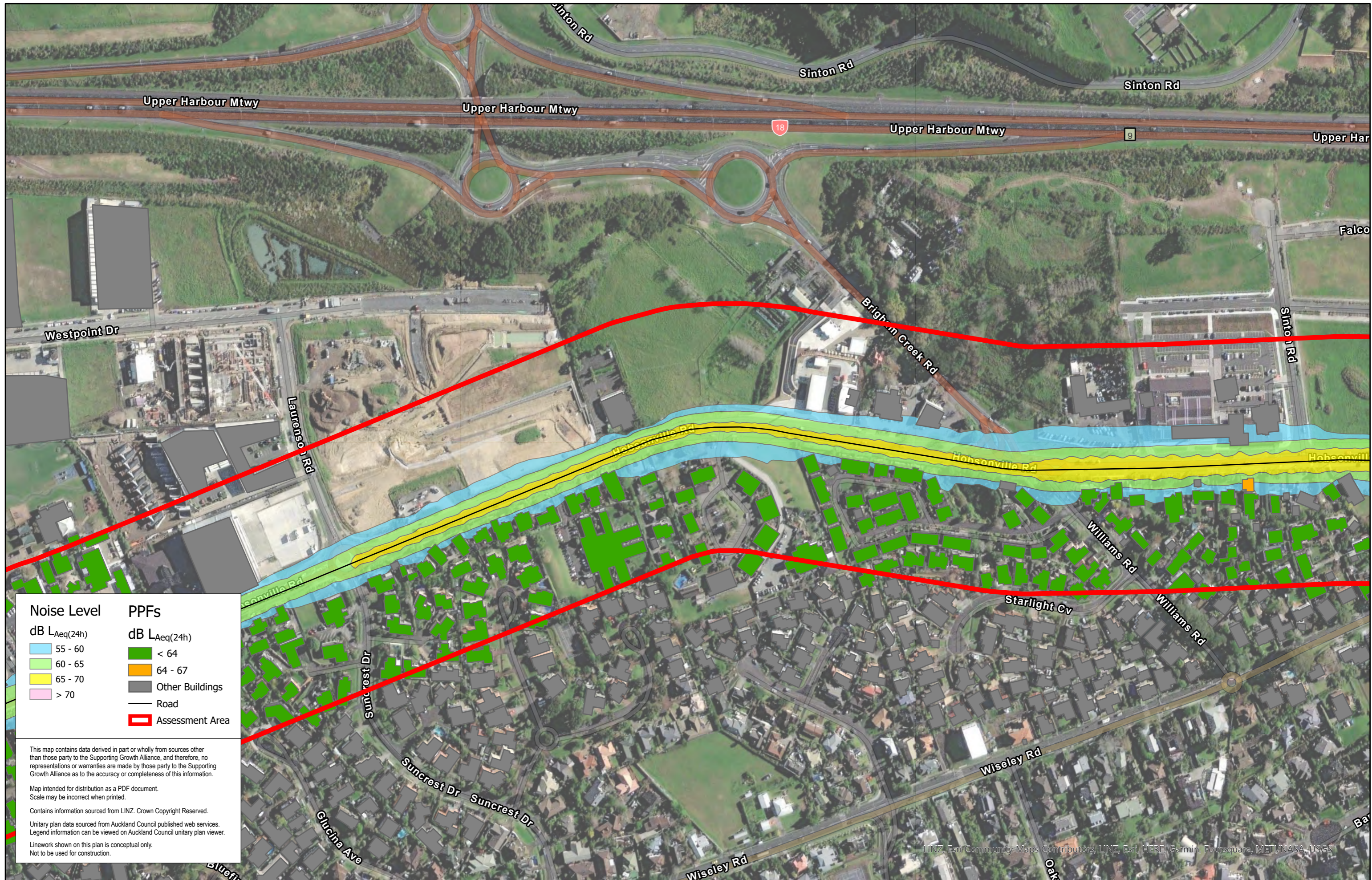
Contains information sourced from LINZ. Crown Copyright Reserved.

Unitary plan data sourced from Auckland Council published web services.
Legend information can be viewed on Auckland Council unitary plan viewer.

Linework shown on this plan is conceptual only.
Not to be used for construction.

LINZ, Waikato Regional, Esri Community Maps Contributors, LINZ, Esri, HERE, Garmin, Foursquare, METI/NASA, USGS

<p>Map Scale @ A3:</p>		<table border="1" style="width: 100%; border-collapse: collapse;"> <thead> <tr> <th style="font-size: 8px;">Revision</th> <th style="font-size: 8px;">Author</th> <th style="font-size: 8px;">Verified</th> <th style="font-size: 8px;">Approved</th> <th style="font-size: 8px;">Date</th> </tr> </thead> <tbody> <tr> <td style="text-align: center;">1</td> <td style="text-align: center;">Author</td> <td style="text-align: center;">DRAFT</td> <td style="text-align: center;">DRAFT</td> <td style="text-align: center;">dd/mm/yyyy</td> </tr> </tbody> </table>	Revision	Author	Verified	Approved	Date	1	Author	DRAFT	DRAFT	dd/mm/yyyy	<p>Supporting Growth</p> <p>NoR W5 - Mitigated Road Traffic Noise</p>	<p>Client: Supporting Growth</p> <p>Project: North West Package</p>		<p>Discipline: GIS</p> <p>Drawing No: SGA-NOR-W1-000</p>
Revision	Author	Verified	Approved	Date												
1	Author	DRAFT	DRAFT	dd/mm/yyyy												



Noise Level		PPFs	
dB L _{Aeq} (24h)		dB L _{Aeq} (24h)	
■	55 - 60	■	< 64
■	60 - 65	■	64 - 67
■	65 - 70	■	Other Buildings
■	> 70	—	Road
			Assessment Area

This map contains data derived in part or wholly from sources other than those party to the Supporting Growth Alliance, and therefore, no representations or warranties are made by those party to the Supporting Growth Alliance as to the accuracy or completeness of this information.

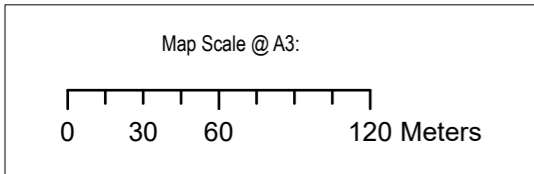
Map intended for distribution as a PDF document.
Scale may be incorrect when printed.

Contains information sourced from LINZ. Crown Copyright Reserved.

Unitary plan data sourced from Auckland Council published web services.
Legend information can be viewed on Auckland Council unitary plan viewer.

Linework shown on this plan is conceptual only.
Not to be used for construction.

LINZ, Esri Community Maps Contributors, LINZ, Esri, HERE, Garmin, Foursquare, METI/NASA, USGS



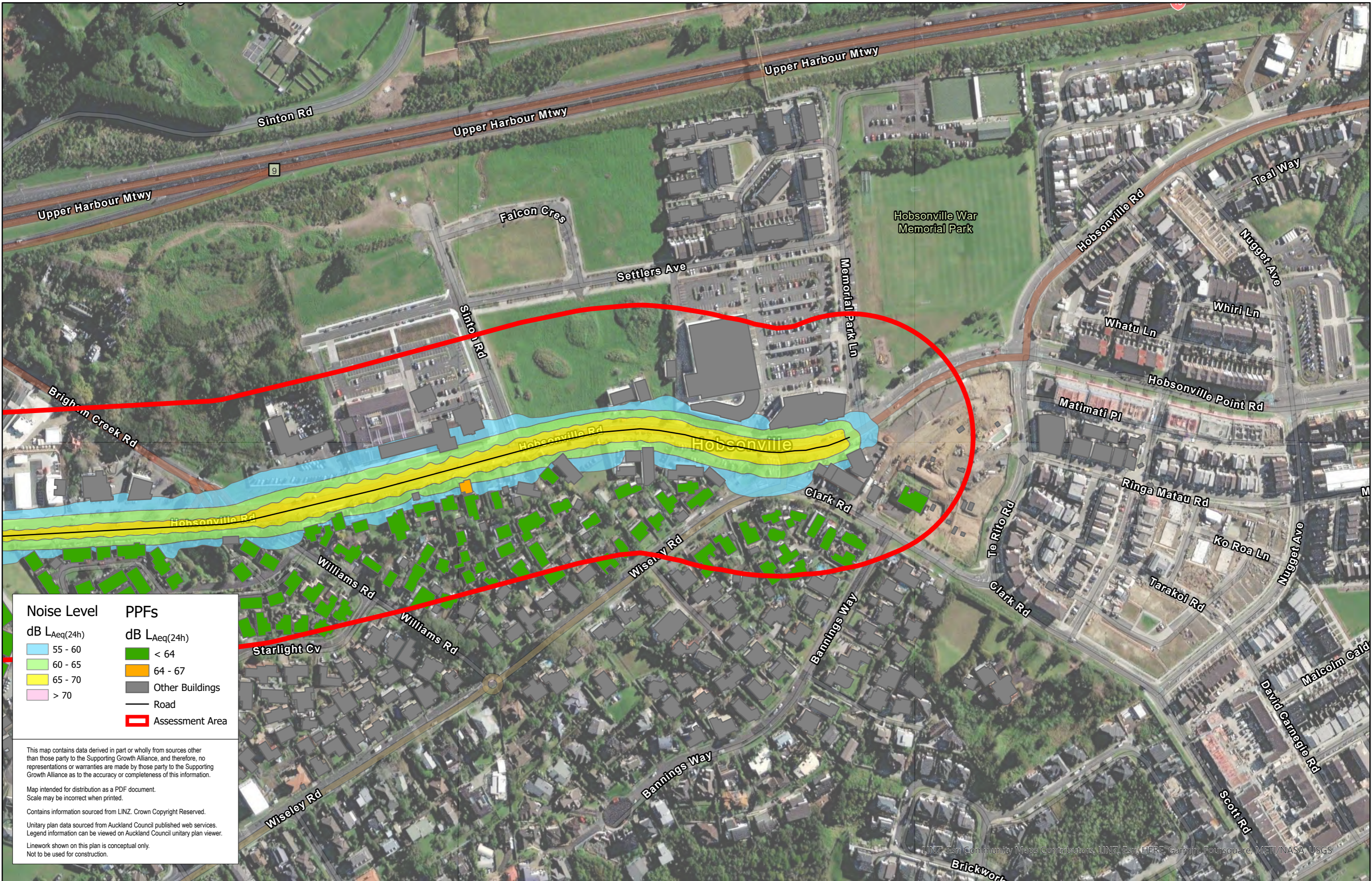
Revision	Author	Verified	Approved	Date
1	Author	DRAFT	DRAFT	dd/mm/yyyy

Supporting Growth
NoR W5 - Mitigated Road Traffic Noise

Client: Supporting Growth
Project: North West Package



Discipline: GIS
Drawing No: SGA-NOR-W1-000



Noise Level	PPFs
dB $L_{Aeq}(24h)$	dB $L_{Aeq}(24h)$
55 - 60	< 64
60 - 65	64 - 67
65 - 70	Other Buildings
> 70	Road
	Assessment Area

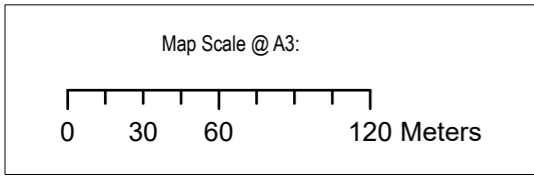
This map contains data derived in part or wholly from sources other than those party to the Supporting Growth Alliance, and therefore, no representations or warranties are made by those party to the Supporting Growth Alliance as to the accuracy or completeness of this information.

Map intended for distribution as a PDF document.
Scale may be incorrect when printed.

Contains information sourced from LINZ. Crown Copyright Reserved.

Unitary plan data sourced from Auckland Council published web services.
Legend information can be viewed on Auckland Council unitary plan viewer.

Linework shown on this plan is conceptual only.
Not to be used for construction.



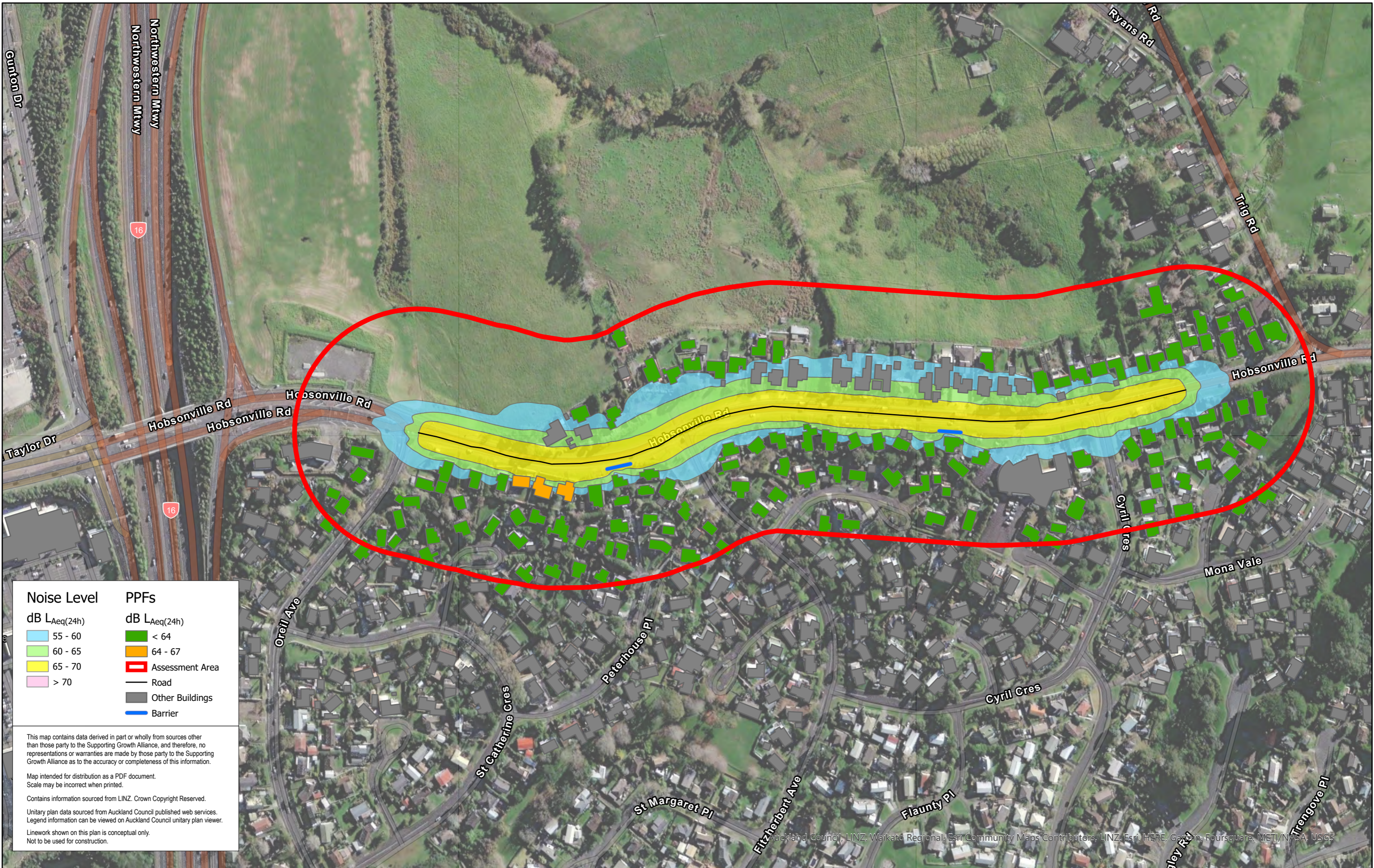
Revision	Author	Verified	Approved	Date
1	Author	DRAFT	DRAFT	dd/mm/yyyy

Supporting Growth
NoR W5 - Mitigated Road Traffic Noise

Client: Supporting Growth
Project: North West Package



Discipline: GIS
Drawing No: SGA-NOR-W1-000



Noise Level		PPFs	
dB L _{Aeq} (24h)		dB L _{Aeq} (24h)	
	55 - 60		< 64
	60 - 65		64 - 67
	65 - 70		Assessment Area
	> 70		Road
			Other Buildings
			Barrier

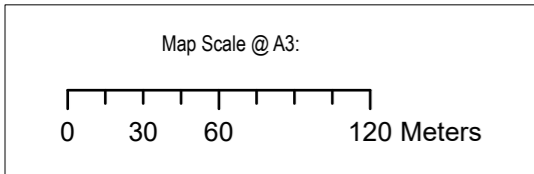
This map contains data derived in part or wholly from sources other than those party to the Supporting Growth Alliance, and therefore, no representations or warranties are made by those party to the Supporting Growth Alliance as to the accuracy or completeness of this information.

Map intended for distribution as a PDF document.
Scale may be incorrect when printed.

Contains information sourced from LINZ. Crown Copyright Reserved.

Unitary plan data sourced from Auckland Council published web services.
Legend information can be viewed on Auckland Council unitary plan viewer.

Linework shown on this plan is conceptual only.
Not to be used for construction.



Revision	Author	Verified	Approved	Date	Title:
1	DA	SJ	CD	23/11/22	Supporting Growth NoR W5 - Mitigated Road Traffic Noise 2

Supporting Growth
NoR W5 - Mitigated Road Traffic Noise 2

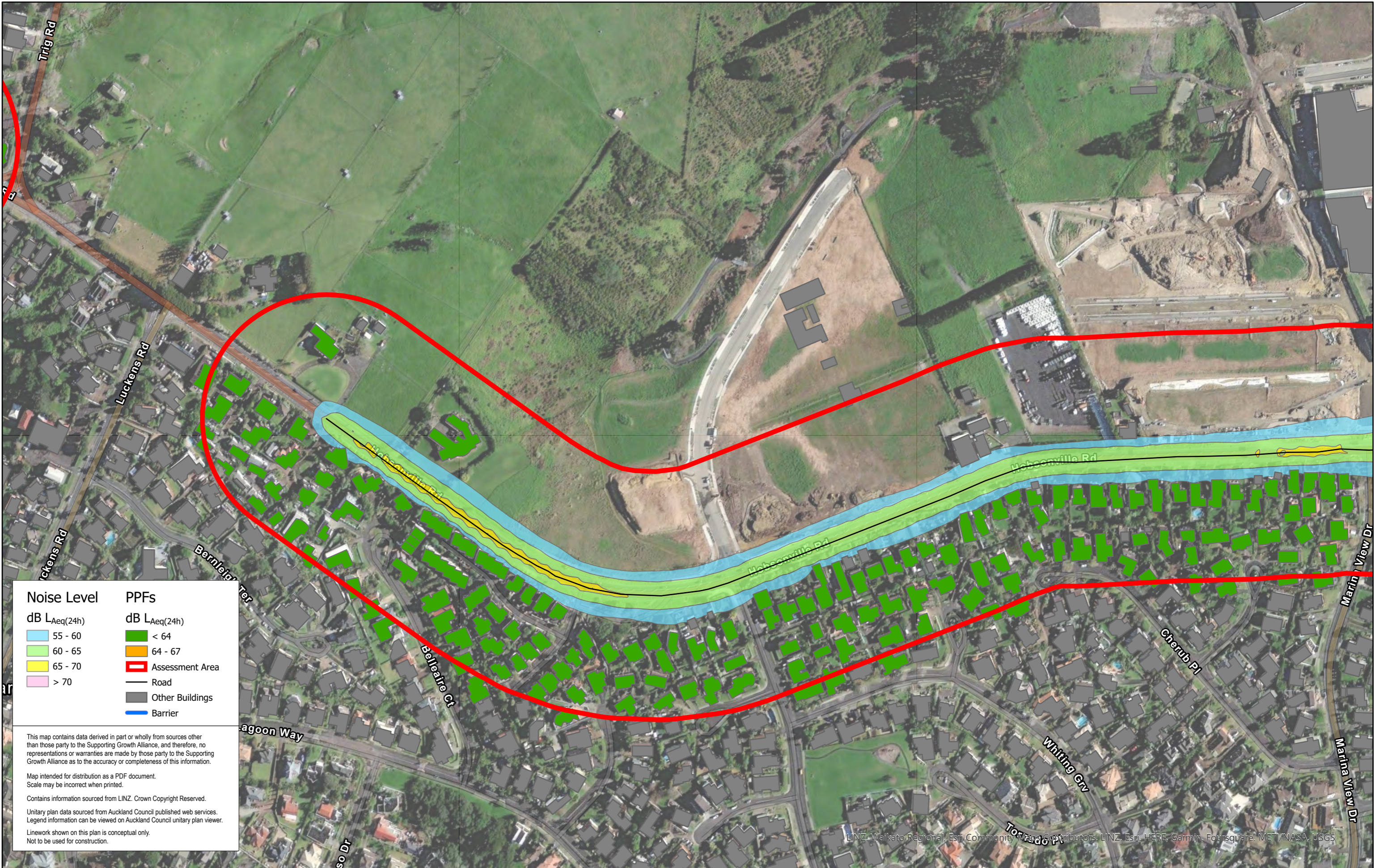
Client: Supporting Growth

Project: North West Package



Discipline: GIS

Drawing No: SGA-NOR-W1-000



Noise Level	PPFs
dB L _{Aeq} (24h)	dB L _{Aeq} (24h)
55 - 60	< 64
60 - 65	64 - 67
65 - 70	Assessment Area
> 70	Road
	Other Buildings
	Barrier

This map contains data derived in part or wholly from sources other than those party to the Supporting Growth Alliance, and therefore, no representations or warranties are made by those party to the Supporting Growth Alliance as to the accuracy or completeness of this information.

Map intended for distribution as a PDF document.
Scale may be incorrect when printed.

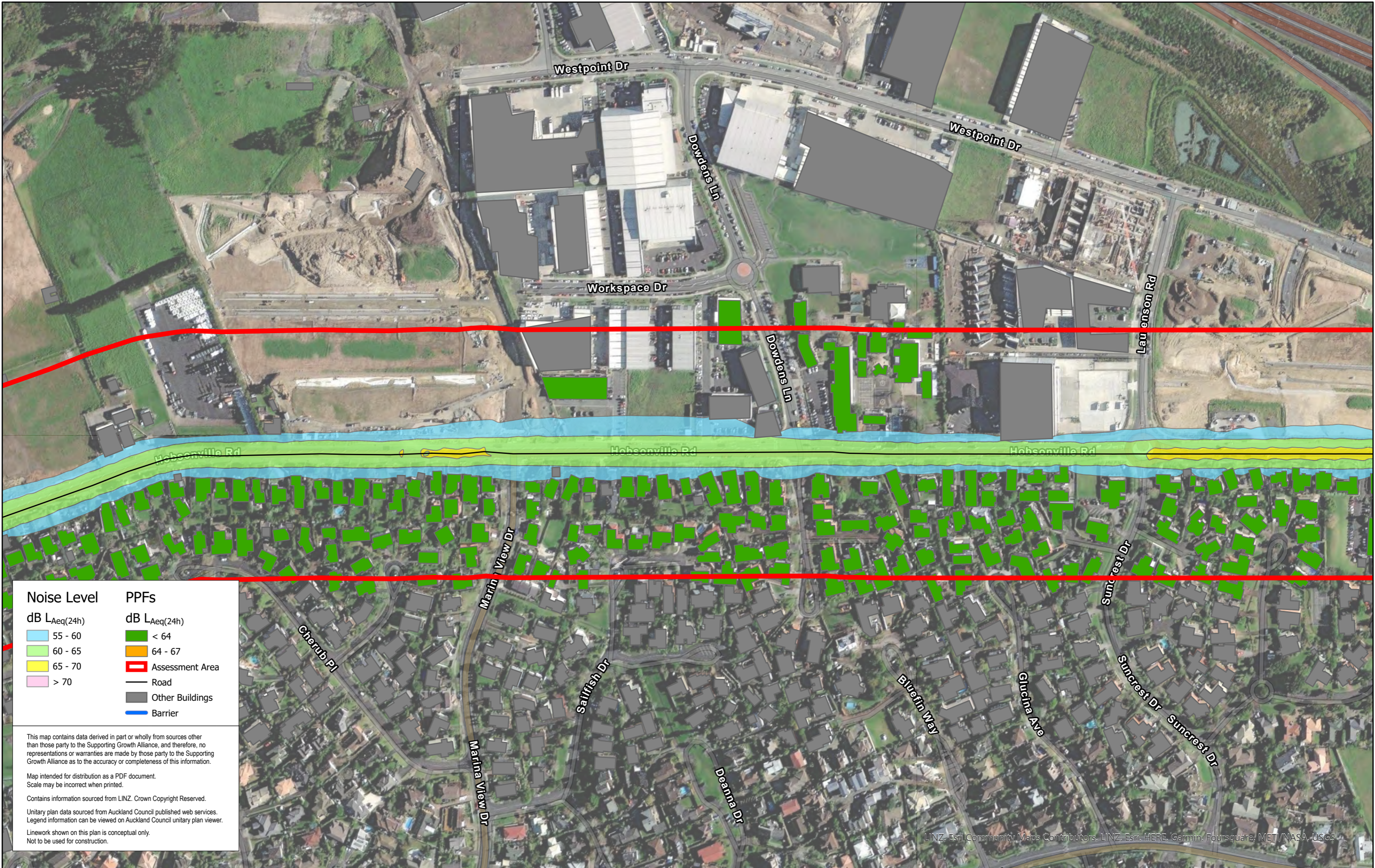
Contains information sourced from LINZ. Crown Copyright Reserved.

Unitary plan data sourced from Auckland Council published web services.
Legend information can be viewed on Auckland Council unitary plan viewer.

Linework shown on this plan is conceptual only.
Not to be used for construction.

LINZ, Waikato Regional, Esri, Community Maps Contributors, LINZ, Esri, HERE, Garmin, Foursquare, MET, NASA, USGS

Map Scale @ A3: 		<table border="1"> <thead> <tr> <th>Revision</th> <th>Author</th> <th>Verified</th> <th>Approved</th> <th>Date</th> </tr> </thead> <tbody> <tr> <td>1</td> <td>DA</td> <td>SJ</td> <td>CD</td> <td>23/11/22</td> </tr> </tbody> </table>	Revision	Author	Verified	Approved	Date	1	DA	SJ	CD	23/11/22	Supporting Growth NoR W5 - Mitigated Road Traffic Noise 2	Client: Supporting Growth		Discipline: GIS
		Revision	Author	Verified	Approved	Date										
1	DA	SJ	CD	23/11/22												
Project: North West Package	Drawing No: SGA-NOR-W1-000															



Noise Level	PPFs
dB $L_{Aeq}(24h)$	dB $L_{Aeq}(24h)$
55 - 60	< 64
60 - 65	64 - 67
65 - 70	Assessment Area
> 70	Road
	Other Buildings
	Barrier

This map contains data derived in part or wholly from sources other than those party to the Supporting Growth Alliance, and therefore, no representations or warranties are made by those party to the Supporting Growth Alliance as to the accuracy or completeness of this information.

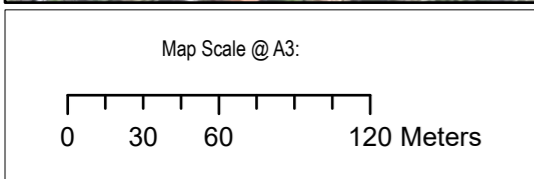
Map intended for distribution as a PDF document.
Scale may be incorrect when printed.

Contains information sourced from LINZ. Crown Copyright Reserved.

Unitary plan data sourced from Auckland Council published web services.
Legend information can be viewed on Auckland Council unitary plan viewer.

Linework shown on this plan is conceptual only.
Not to be used for construction.

LINZ, Esri Community Maps Contributors, LINZ, Esri, HERE, Garmin, Foursquare, METI/NASA, USGS



Revision	Author	Verified	Approved	Date	Title:
1	DA	SJ	CD	23/11/22	Supporting Growth NoR W5 - Mitigated Road Traffic Noise 2

Supporting Growth
NoR W5 - Mitigated Road Traffic Noise 2

Client: Supporting Growth

Project: North West Package

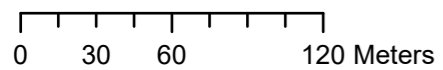


Discipline: GIS

Drawing No: SGA-NOR-W1-000



Map Scale @ A3:



Revision	Author	Verified	Approved	Date	Title:
1	DA	SJ	CD	23/11/22	

Supporting Growth
NoR W5 - Mitigated Road Traffic Noise 2

Client: Supporting Growth

Project: North West Package



Discipline: GIS

Drawing No: SGA-NOR-W1-000



Noise Level	PPFs
dB L _{Aeq} (24h)	dB L _{Aeq} (24h)
55 - 60	< 64
60 - 65	64 - 67
65 - 70	Assessment Area
> 70	Road
	Other Buildings
	Barrier

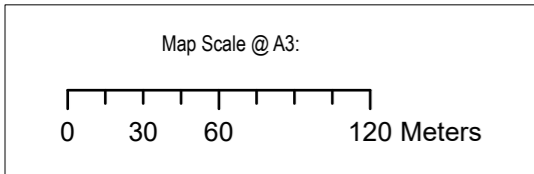
This map contains data derived in part or wholly from sources other than those party to the Supporting Growth Alliance, and therefore, no representations or warranties are made by those party to the Supporting Growth Alliance as to the accuracy or completeness of this information.

Map intended for distribution as a PDF document.
Scale may be incorrect when printed.

Contains information sourced from LINZ. Crown Copyright Reserved.

Unitary plan data sourced from Auckland Council published web services.
Legend information can be viewed on Auckland Council unitary plan viewer.

Linework shown on this plan is conceptual only.
Not to be used for construction.



Revision	Author	Verified	Approved	Date	Title:
1	DA	SJ	CD	23/11/22	Supporting Growth NoR W5 - Mitigated Road Traffic Noise 2

Supporting Growth
NoR W5 - Mitigated Road Traffic Noise 2

Client: Supporting Growth

Project: North West Package



Discipline: GIS

Drawing No: SGA-NOR-W1-000

LINZ, Esri Community Maps Contributors, LINZ, Esri, HERE, Garmin, Foursquare, MITI/NASA, USGS