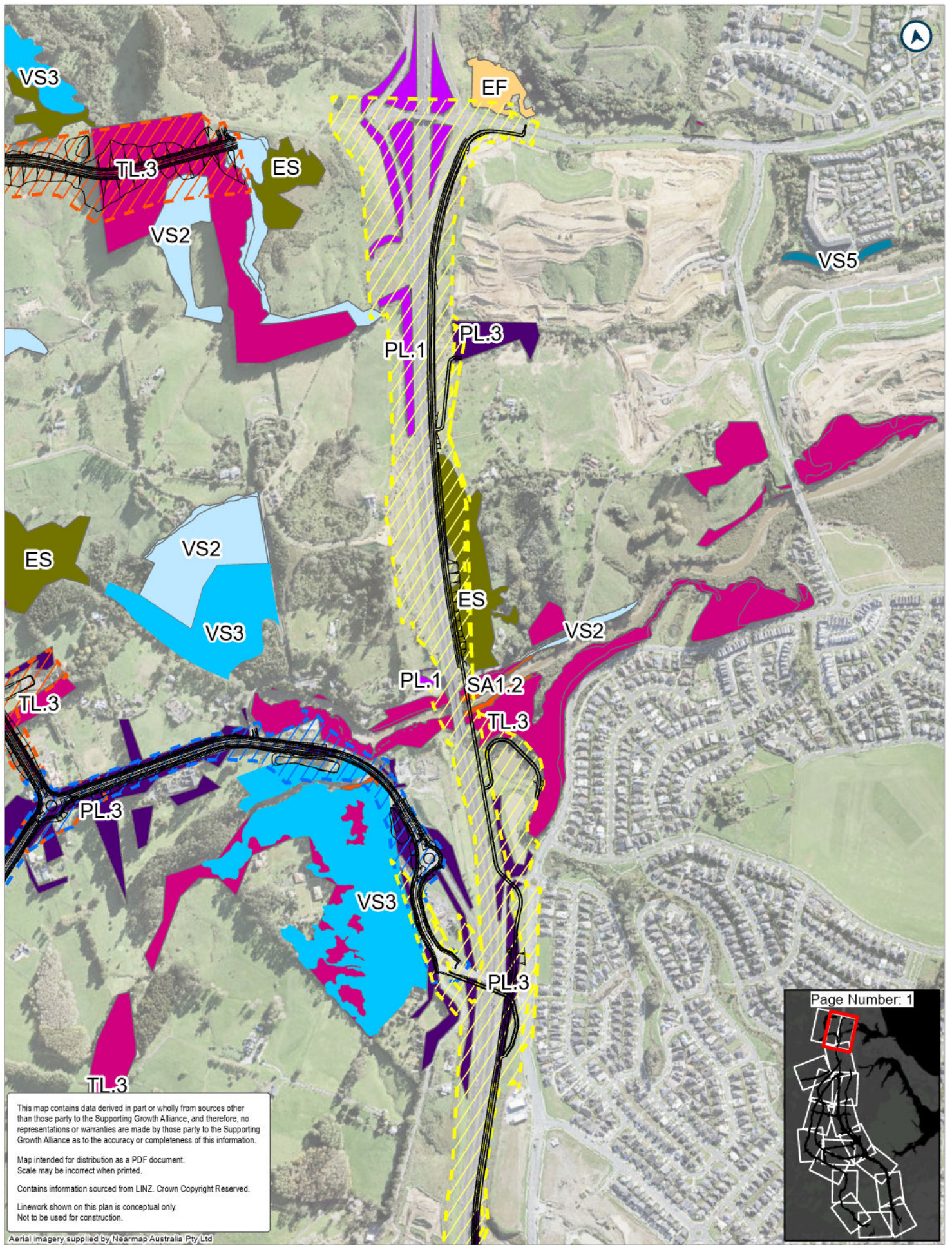


4 Appendix 4 – Ecological Habitat Maps



This map contains data derived in part or wholly from sources other than those party to the Supporting Growth Alliance, and therefore, no representations or warranties are made by those party to the Supporting Growth Alliance as to the accuracy or completeness of this information.

Map intended for distribution as a PDF document.
Scale may be incorrect when printed.

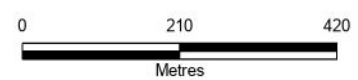
Contains information sourced from LINZ. Crown Copyright Reserved.

Linework shown on this plan is conceptual only.
Not to be used for construction.



LEGEND

- Route Options
- NOR 10
- SEA
- ES - Exotic scrub
- PL.3 - Planted native and/or amenity plantings
- SA1.2 - Mangrove forest and scrub
- VS2 - Kānuka scrub/forest
- VS5 - Broadleaved species scrub/forest
- NOR 4
- EF - Exotic forest
- TL.3 - Exotic treeland
- VS3 - Mānuka, kānuka scrub
- PL.1 - Planted native forest (<20 yrs)





This map contains data derived in part or wholly from sources other than those party to the Supporting Growth Alliance, and therefore, no representations or warranties are made by those party to the Supporting Growth Alliance as to the accuracy or completeness of this information.

Map intended for distribution as a PDF document.
Scale may be incorrect when printed.

Contains information sourced from LINZ. Crown Copyright Reserved.

Linework shown on this plan is conceptual only.
Not to be used for construction.

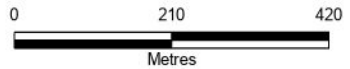
Aerial imagery supplied by Nearmap Australia Pty Ltd

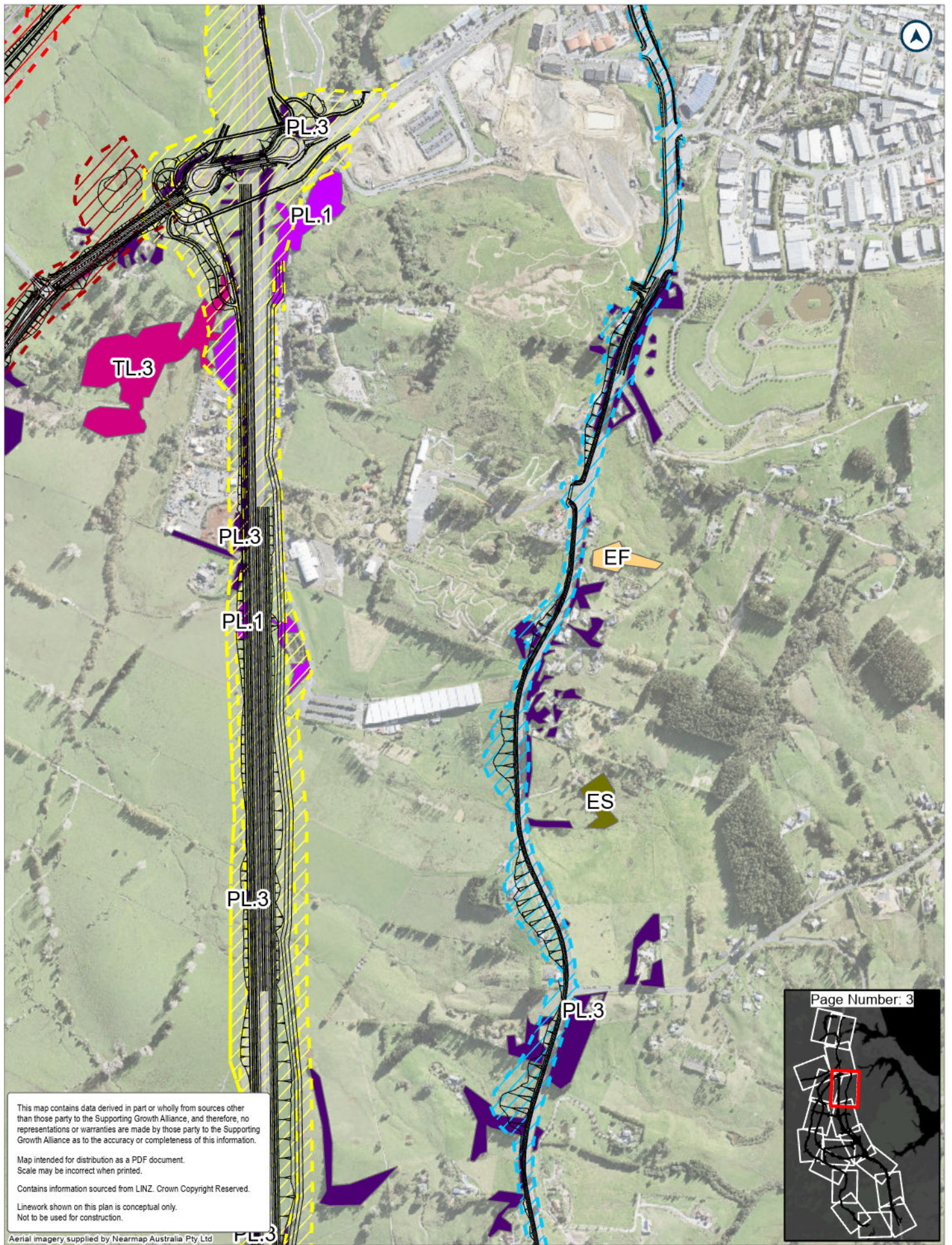


Page Number: 2

LEGEND

- | | | | | | | |
|-----------------|--------|--------------------|--|--|------------------------|--|
| — Route Options | NOR 4 | SEA | PL.1 - Planted native forest (<20 yrs) | PL.3 - Planted native and/or amenity plantings | MF4 - Kahikatea forest | WF11 - Kauri, podocarp, broadleaved forest |
| NOR 1 | NOR 7 | EF - Exotic forest | TL.3 - Exotic treeland | WF9 - Taraire, tawa, podocarp forest | | |
| NOR 2 | NOR 8 | | | | | |
| NOR 3 | NOR 10 | | | | | |





This map contains data derived in part or wholly from sources other than those party to the Supporting Growth Alliance, and therefore, no representations or warranties are made by those party to the Supporting Growth Alliance as to the accuracy or completeness of this information.

Map intended for distribution as a PDF document.
Scale may be incorrect when printed.

Contains information sourced from LINZ. Crown Copyright Reserved.

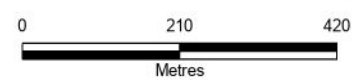
Linework shown on this plan is conceptual only.
Not to be used for construction.

Aerial imagery supplied by Nearmap Australia Pty Ltd



LEGEND

- | | | | | | |
|-----------------|--------|--------------------|--|--|------------------------|
| — Route Options | NOR 4 | EF - Exotic forest | PL.1 - Planted native forest (<20 yrs) | PL.3 - Planted native and/or amenity plantings | TL.3 - Exotic treeland |
| NOR 1 | NOR 8 | ES - Exotic scrub | | | |
| NOR 3 | NOR 13 | | | | |





This map contains data derived in part or wholly from sources other than those party to the Supporting Growth Alliance, and therefore, no representations or warranties are made by those party to the Supporting Growth Alliance as to the accuracy or completeness of this information.

Map intended for distribution as a PDF document.
Scale may be incorrect when printed.

Contains information sourced from LINZ. Crown Copyright Reserved.

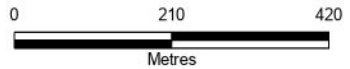
Linework shown on this plan is conceptual only.
Not to be used for construction.

Aerial imagery supplied by Nearmap Australia Pty Ltd.



LEGEND

- Route Options
- NOR 5
- EG - Exotic grass
- PL.3 - Planted native and/or amenity plantings
- NOR 1
- NOR 11
- ES - Exotic scrub
- TL.3 - Exotic treeland
- NOR 4
- NOR 13





This map contains data derived in part or wholly from sources other than those party to the Supporting Growth Alliance, and therefore, no representations or warranties are made by those party to the Supporting Growth Alliance as to the accuracy or completeness of this information.

Map intended for distribution as a PDF document.
Scale may be incorrect when printed.

Contains information sourced from LINZ. Crown Copyright Reserved.

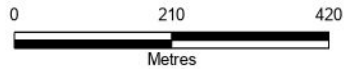
Linework shown on this plan is conceptual only.
Not to be used for construction.

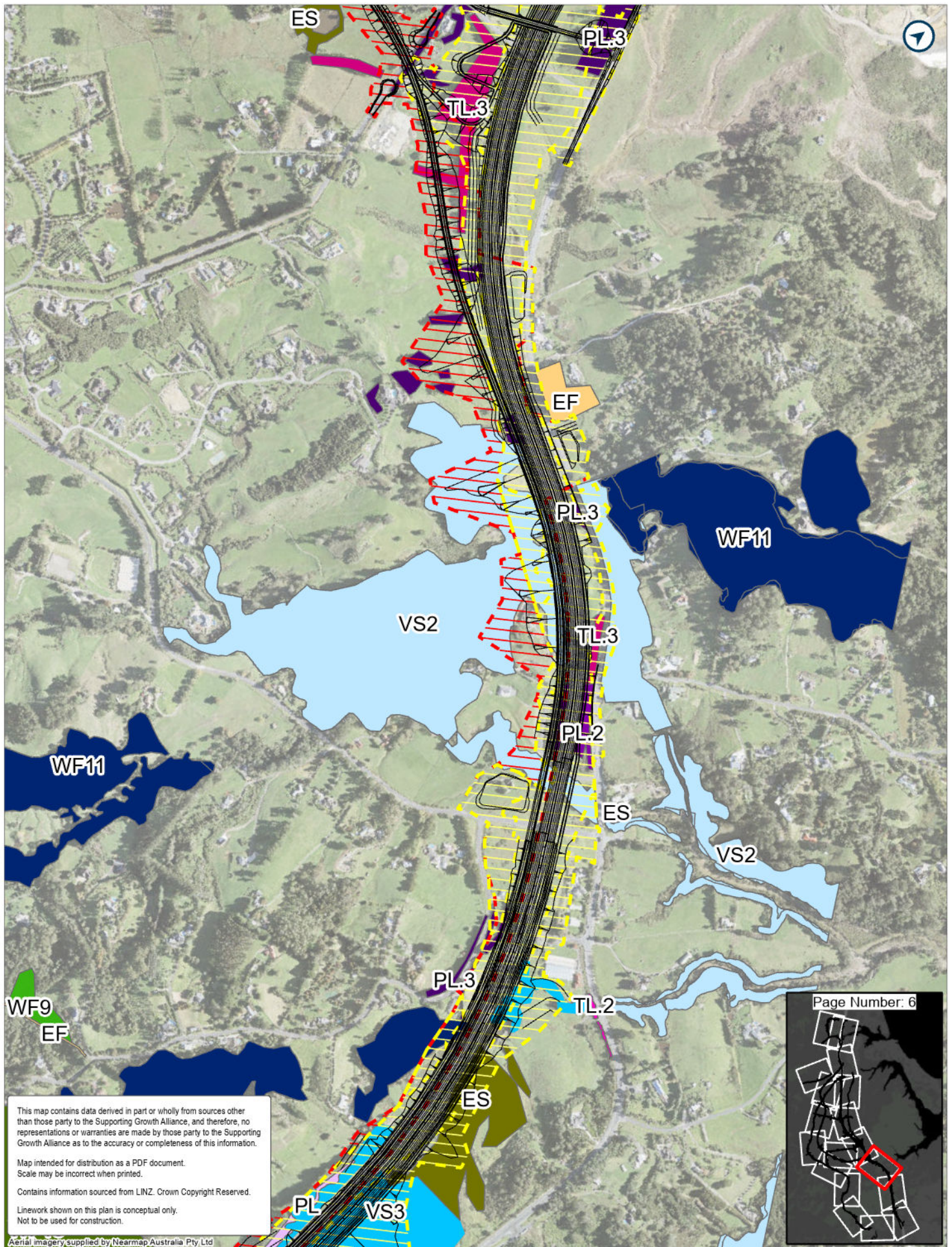


Page Number: 5

LEGEND

- Route Options
- NOR 5
- EF - Exotic forest
- PL.3 - Planted native and/or amenity plantings
- NOR 1
- NOR 12
- EG - Exotic grass
- TL.3 - Exotic treeland
- NOR 4
- NOR 13
- ES - Exotic scrub





This map contains data derived in part or wholly from sources other than those party to the Supporting Growth Alliance, and therefore, no representations or warranties are made by those party to the Supporting Growth Alliance as to the accuracy or completeness of this information.

Map intended for distribution as a PDF document.
Scale may be incorrect when printed.

Contains information sourced from LINZ. Crown Copyright Reserved.

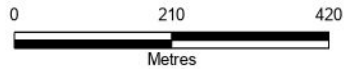
Linework shown on this plan is conceptual only.
Not to be used for construction.

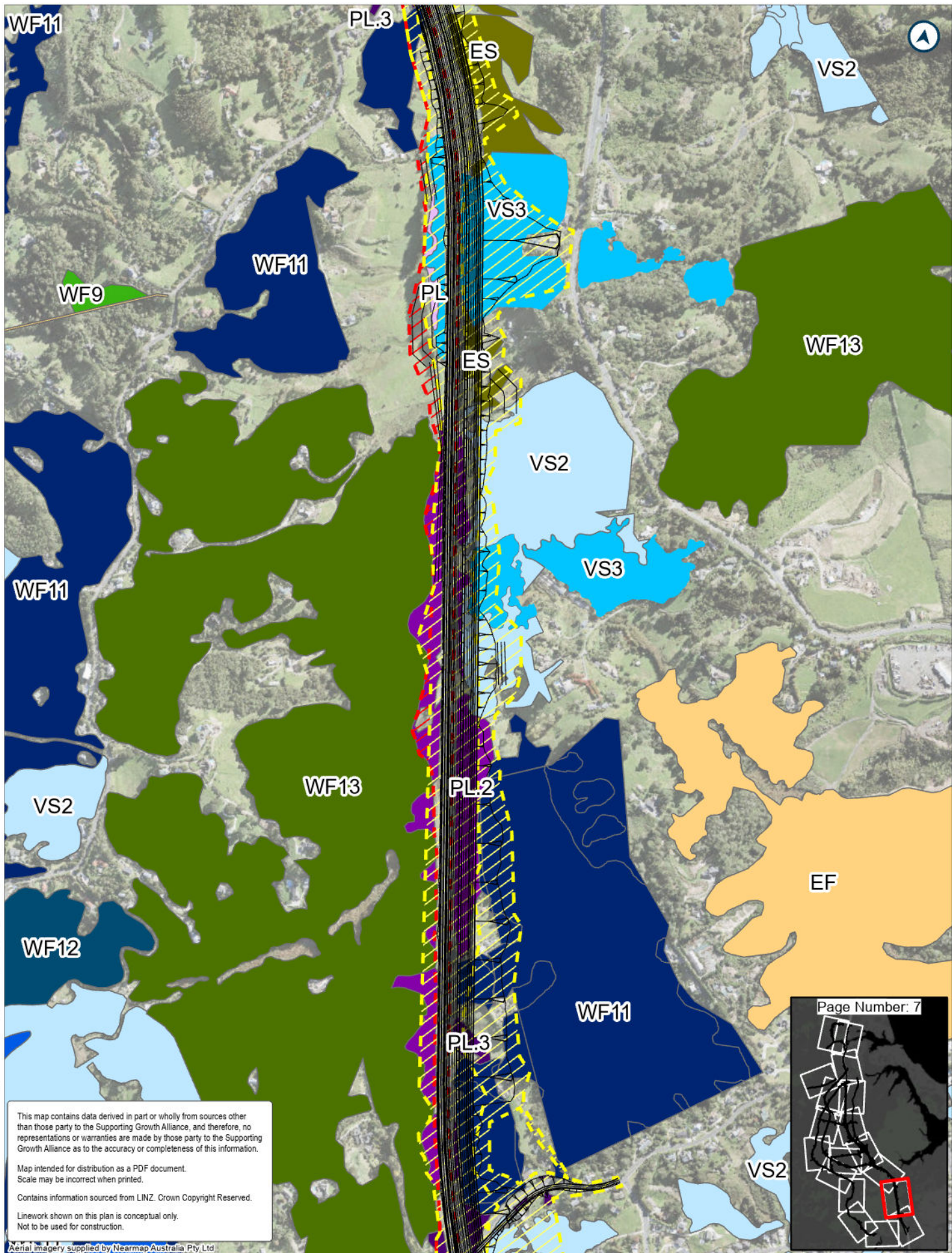
Aerial imagery supplied by Nearmap Australia Pty Ltd



LEGEND

- | | | | | | | | |
|-----------------|-------------------------|--|--|---------------------------|----------------------------|--|---|
| — Route Options | EF - Exotic forest | PL.2 - Planted native forest (>20 yrs) | PL.3 - Planted native and/or amenity plantings | TL.3 - Exotic treeland | VS3 - Mānuka, kānuka scrub | WF11 - Kauri, podocarp, broadleaved forest | WF13 - Tawa, kohekohe, rewarewa, hinau, podocarp forest |
| NOR 1 | ES - Exotic scrub | | TL.2 - Treeland (native/exotic mix) | VS2 - Kānuka scrub/forest | | | |
| NOR 4 | PL - Planted vegetation | | | | | | |
| SEA | | | | | | | |
| | | | | | | | |
| | | | | | | | |





This map contains data derived in part or wholly from sources other than those party to the Supporting Growth Alliance, and therefore, no representations or warranties are made by those party to the Supporting Growth Alliance as to the accuracy or completeness of this information.

Map intended for distribution as a PDF document.
Scale may be incorrect when printed.

Contains information sourced from LINZ. Crown Copyright Reserved.

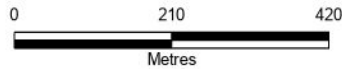
Linework shown on this plan is conceptual only.
Not to be used for construction.

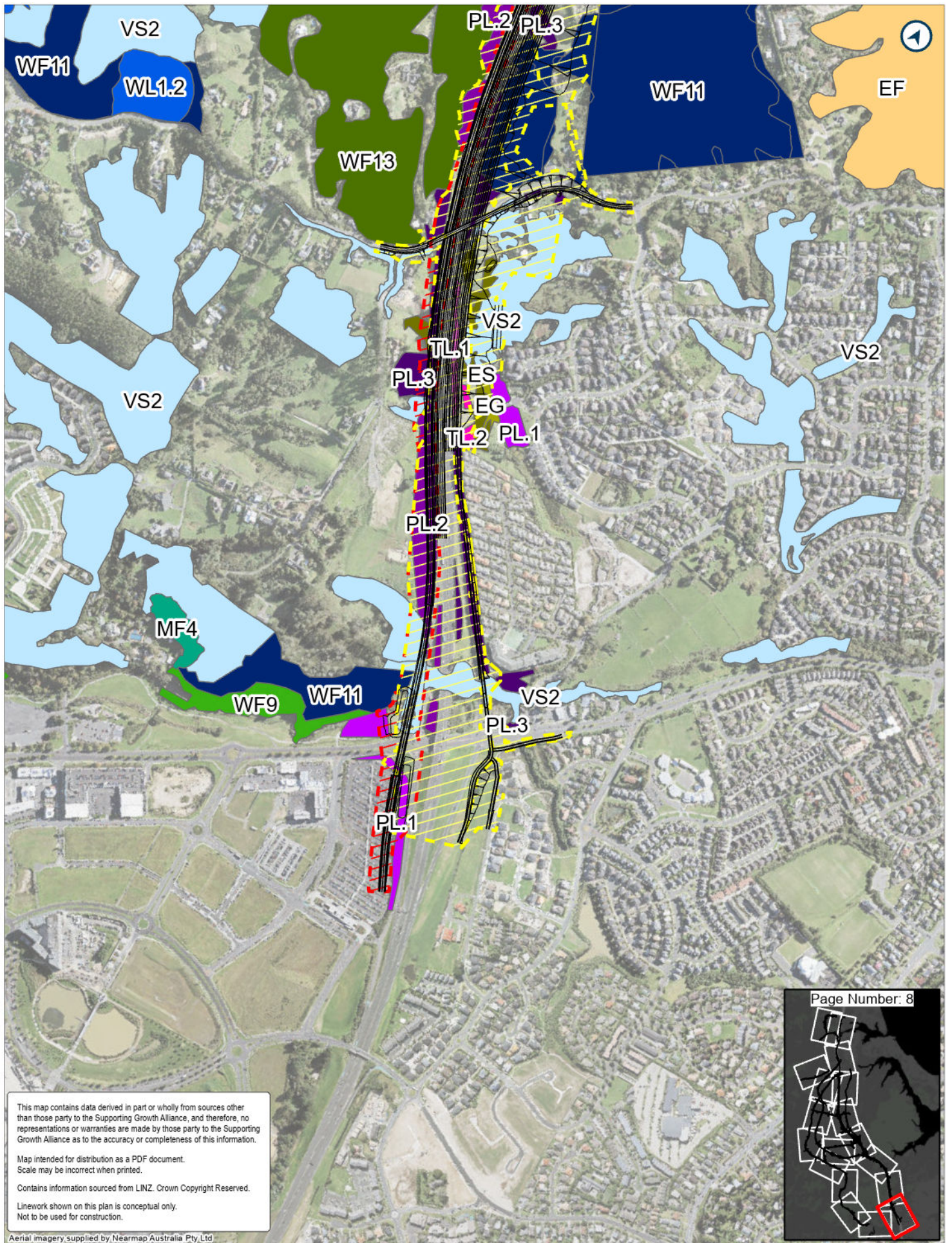
Aerial imagery supplied by Nearnmap Australia Pty Ltd



LEGEND

- Route Options
- NOR 1
- NOR 4
- SEA
- EF - Exotic forest
- ES - Exotic scrub
- PL - Planted vegetation
- PL.2 - Planted native forest (>20 yrs)
- PL.3 - Planted native and/or amenity plantings
- VS3 - Mānuka, kānuka scrub
- VS2 - Kānuka scrub/forest
- WF11 - Kauri, podocarp, broadleaved forest
- WF12 - Kauri, podocarp, broadleaved, beech forest
- WF13 - Tawa, kohekohe, rewarewa, hīnau, podocarp forest
- WF9 - Tarairē, tawa, podocarp forest
- WF12.2 - Mānuka, gumland grass tree-Machaerina scrub/sedgeland





This map contains data derived in part or wholly from sources other than those party to the Supporting Growth Alliance, and therefore, no representations or warranties are made by those party to the Supporting Growth Alliance as to the accuracy or completeness of this information.

Map intended for distribution as a PDF document.
Scale may be incorrect when printed.

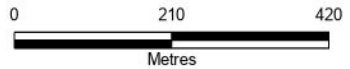
Contains information sourced from LINZ. Crown Copyright Reserved.

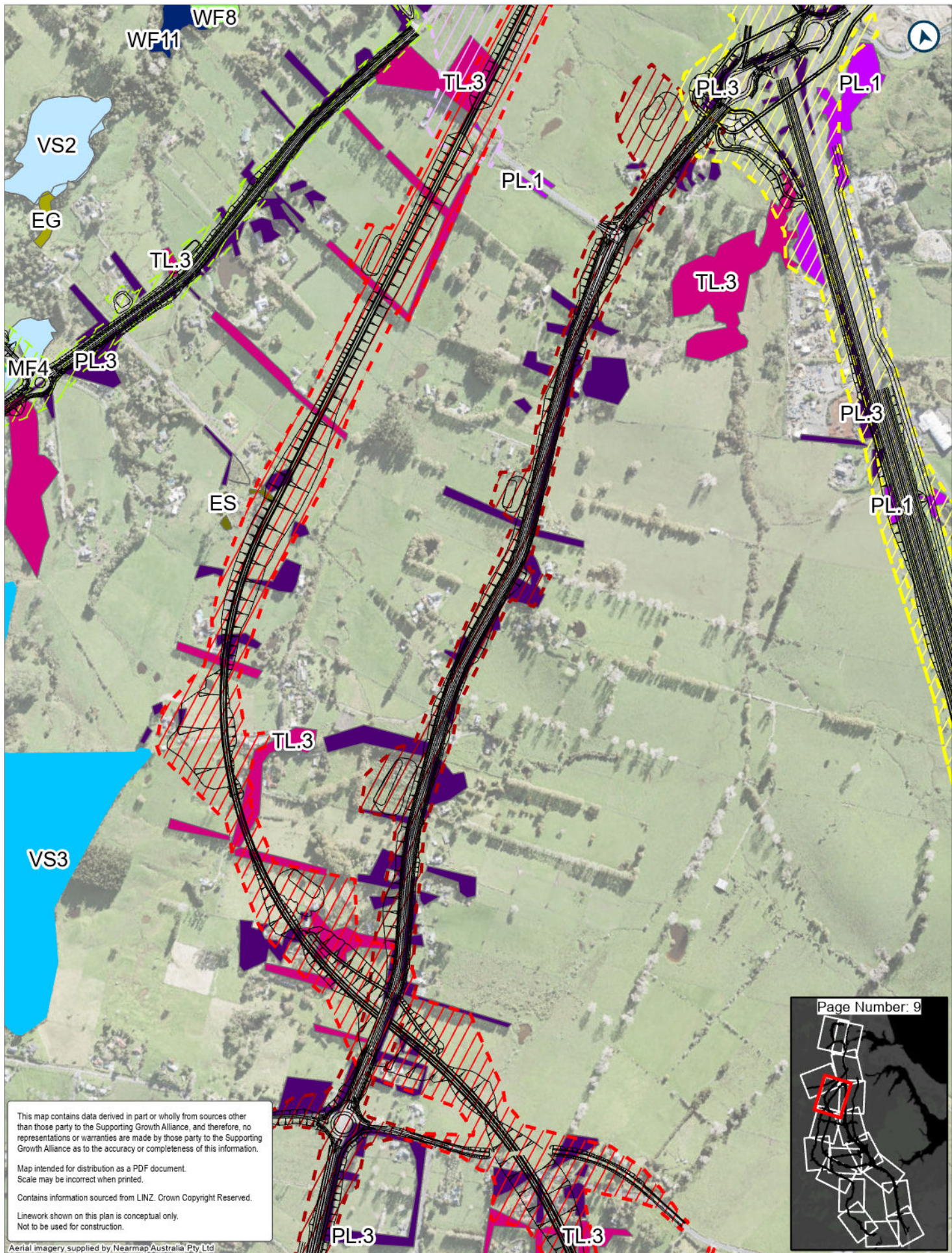
Linework shown on this plan is conceptual only.
Not to be used for construction.



LEGEND

- Route Options
- NOR 1
- NOR 4
- SEA
- EF - Exotic forest
- EG - Exotic grass
- ES - Exotic scrub
- PL.1 - Planted native forest (<20 yrs)
- PL.2 - Planted native forest (>20 yrs)
- PL.3 - Planted native and/or amenity plantings
- TL.1 - Native treeland
- TL.2 - Treeland (native/exotic mix)
- VS2 - Kānuka scrub/forest
- MF4 - Kahikatea forest
- WF9 - Taraire, tawa, podocarp forest
- WF11 - Kauri, broadleaved forest
- WF13 - Tawa, kohekohe, rewarewa, hīnau, podocarp forest
- WL1.2 - Mānuka, gumland grass tree-Machaerina scrub/sedgeland





This map contains data derived in part or wholly from sources other than those party to the Supporting Growth Alliance, and therefore, no representations or warranties are made by those party to the Supporting Growth Alliance as to the accuracy or completeness of this information.

Map intended for distribution as a PDF document.
Scale may be incorrect when printed.

Contains information sourced from LINZ. Crown Copyright Reserved.

Linework shown on this plan is conceptual only.
Not to be used for construction.

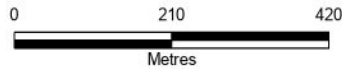
Aerial imagery supplied by Nearmap Australia Pty Ltd

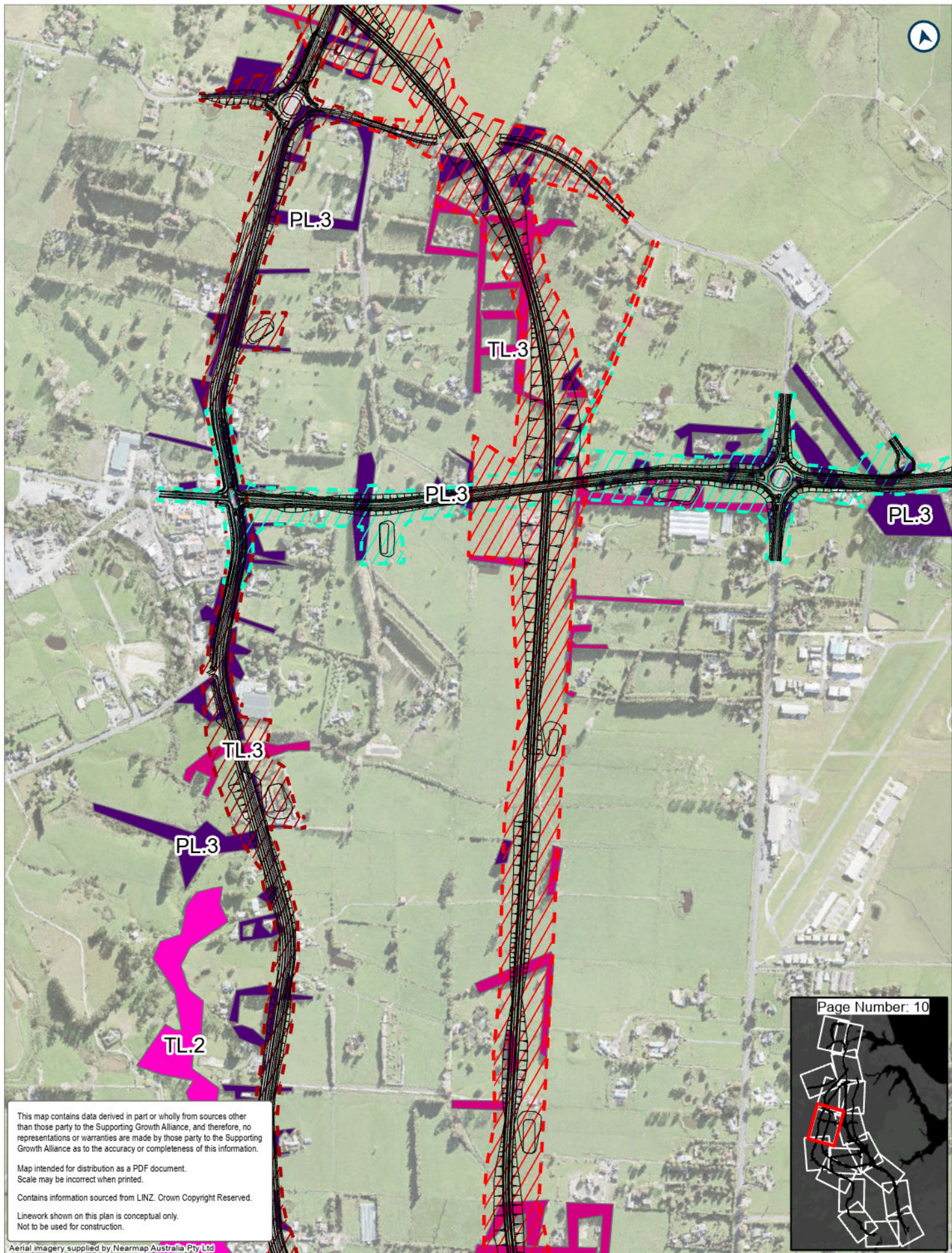


Page Number: 9

LEGEND

- | | | | | | | | |
|-----------------|--------|-------------------|--|--|----------------------------|---------------------------------|--|
| — Route Options | NOR 7 | EG - Exotic grass | PL.1 - Planted native forest (<20 yrs) | PL.3 - Planted native and/or amenity plantings | VS2 - Kānuka scrub/forest | MF4 - Kahikatea forest | WF11 - Kauri, podocarp, broadleaved forest |
| NOR 1 | NOR 8 | ES - Exotic scrub | | | VS3 - Mānuka, kānuka scrub | WF8 - Kahikatea, pukatea forest | |
| NOR 3 | NOR 11 | | | | | | |
| NOR 4 | SEA | | | | | | |
| | | | | | | | |





This map contains data derived in part or wholly from sources other than those party to the Supporting Growth Alliance, and therefore, no representations or warranties are made by those party to the Supporting Growth Alliance as to the accuracy or completeness of this information.

Map intended for distribution as a PDF document.
Scale may be incorrect when printed.

Contains information sourced from LINZ. Crown Copyright Reserved.

Linework shown on this plan is conceptual only.
Not to be used for construction.

Aerial Imagery supplied by Nearmap Australia Pty Ltd



LEGEND

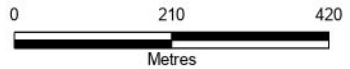
— Route Options
 NOR 1

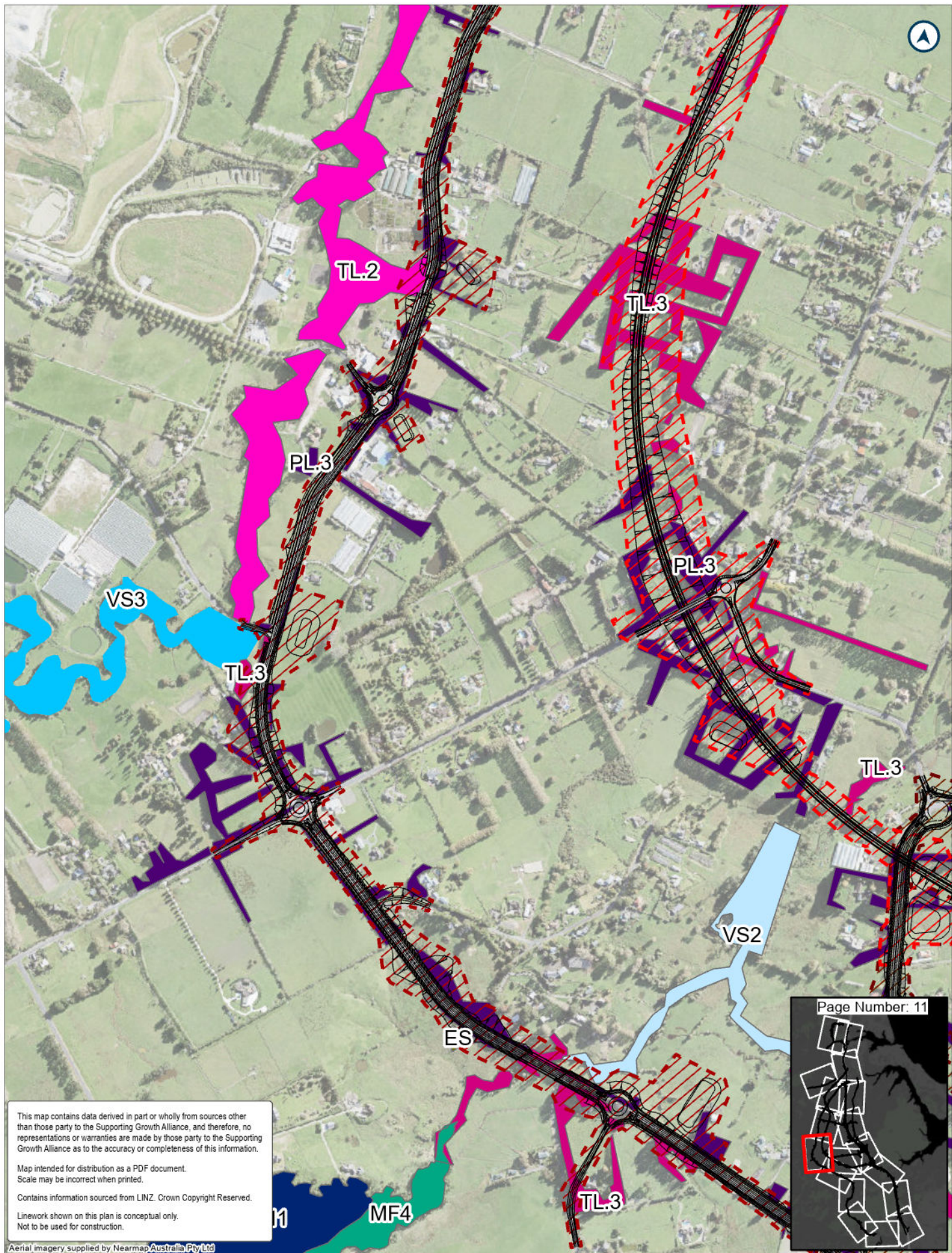
NOR 8
 NOR 11

PL.3 - Planted native and/or amenity plantings

TL.2 - Treeland (native/exotic mix)

TL.3 - Exotic treeland





This map contains data derived in part or wholly from sources other than those party to the Supporting Growth Alliance, and therefore, no representations or warranties are made by those party to the Supporting Growth Alliance as to the accuracy or completeness of this information.

Map intended for distribution as a PDF document.
Scale may be incorrect when printed.

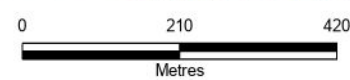
Contains information sourced from LINZ. Crown Copyright Reserved.

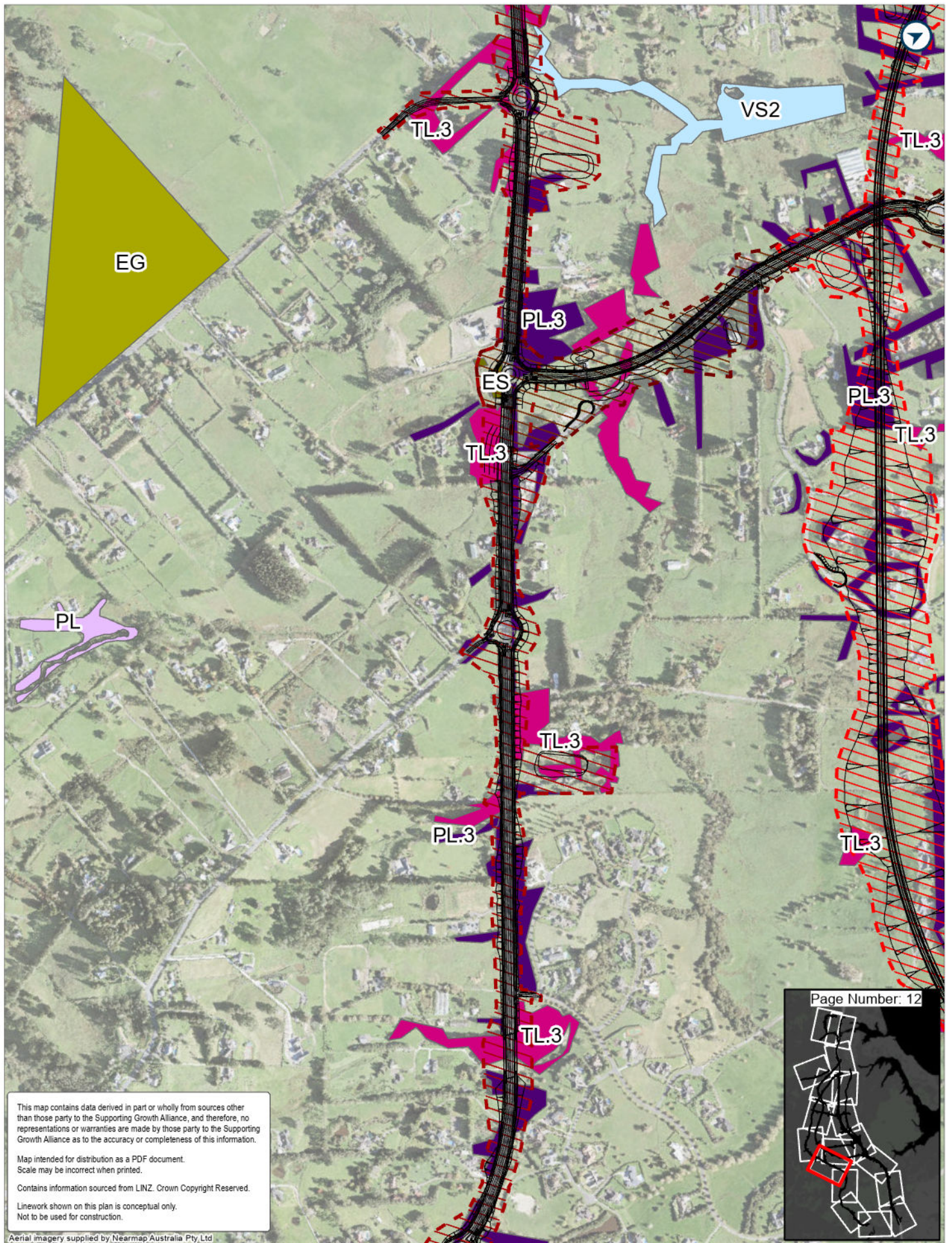
Linework shown on this plan is conceptual only.
Not to be used for construction.



LEGEND

- Route Options
- NOR 1
- NOR 8
- NOR 12
- SEA
- ES - Exotic scrub
- PL.3 - Planted native and/or amenity plantings
- TL.2 - Treeland (native/exotic mix)
- TL.3 - Exotic treeland
- VS2 - Kānuka scrub/forest
- VS3 - Mānuka, kānuka scrub
- MF4 - Kahikatea forest
- WF11 - Kauri, podocarp, broadleaved forest





This map contains data derived in part or wholly from sources other than those party to the Supporting Growth Alliance, and therefore, no representations or warranties are made by those party to the Supporting Growth Alliance as to the accuracy or completeness of this information.

Map intended for distribution as a PDF document.
Scale may be incorrect when printed.

Contains information sourced from LINZ. Crown Copyright Reserved.

Linework shown on this plan is conceptual only.
Not to be used for construction.

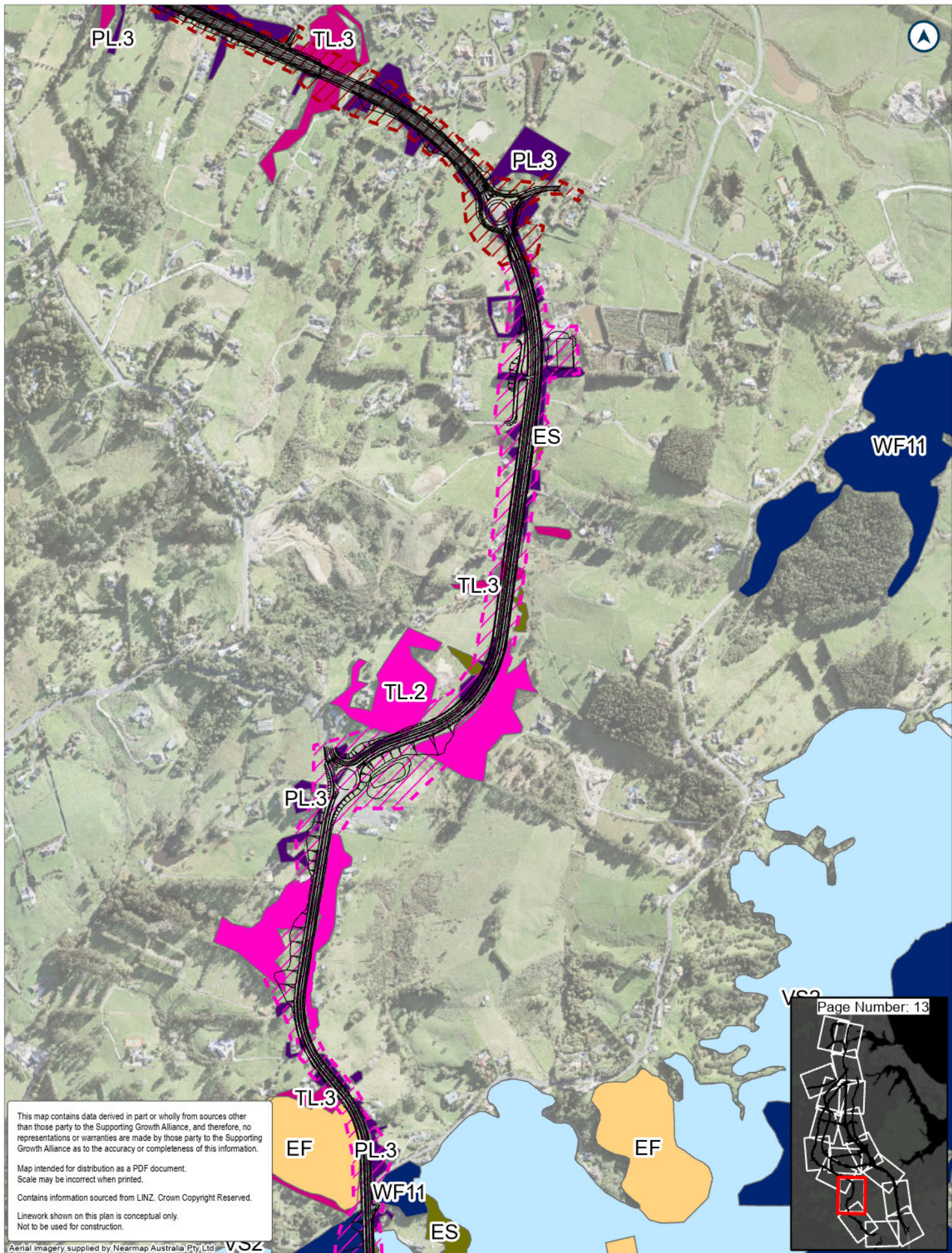
Aerial imagery supplied by Nearmap Australia Pty Ltd



LEGEND

- Route Options
- NOR 1
- NOR 8
- NOR 12
- SEA
- EG - Exotic grass
- ES - Exotic scrub
- PL - Planted vegetation
- PL.3 - Planted native and/or amenity plantings
- TL.3 - Exotic treeland
- VS2 - Kānuka scrub/forest





This map contains data derived in part or wholly from sources other than those party to the Supporting Growth Alliance, and therefore, no representations or warranties are made by those party to the Supporting Growth Alliance as to the accuracy or completeness of this information.

Map intended for distribution as a PDF document.
Scale may be incorrect when printed.

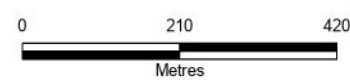
Contains information sourced from LINZ. Crown Copyright Reserved.

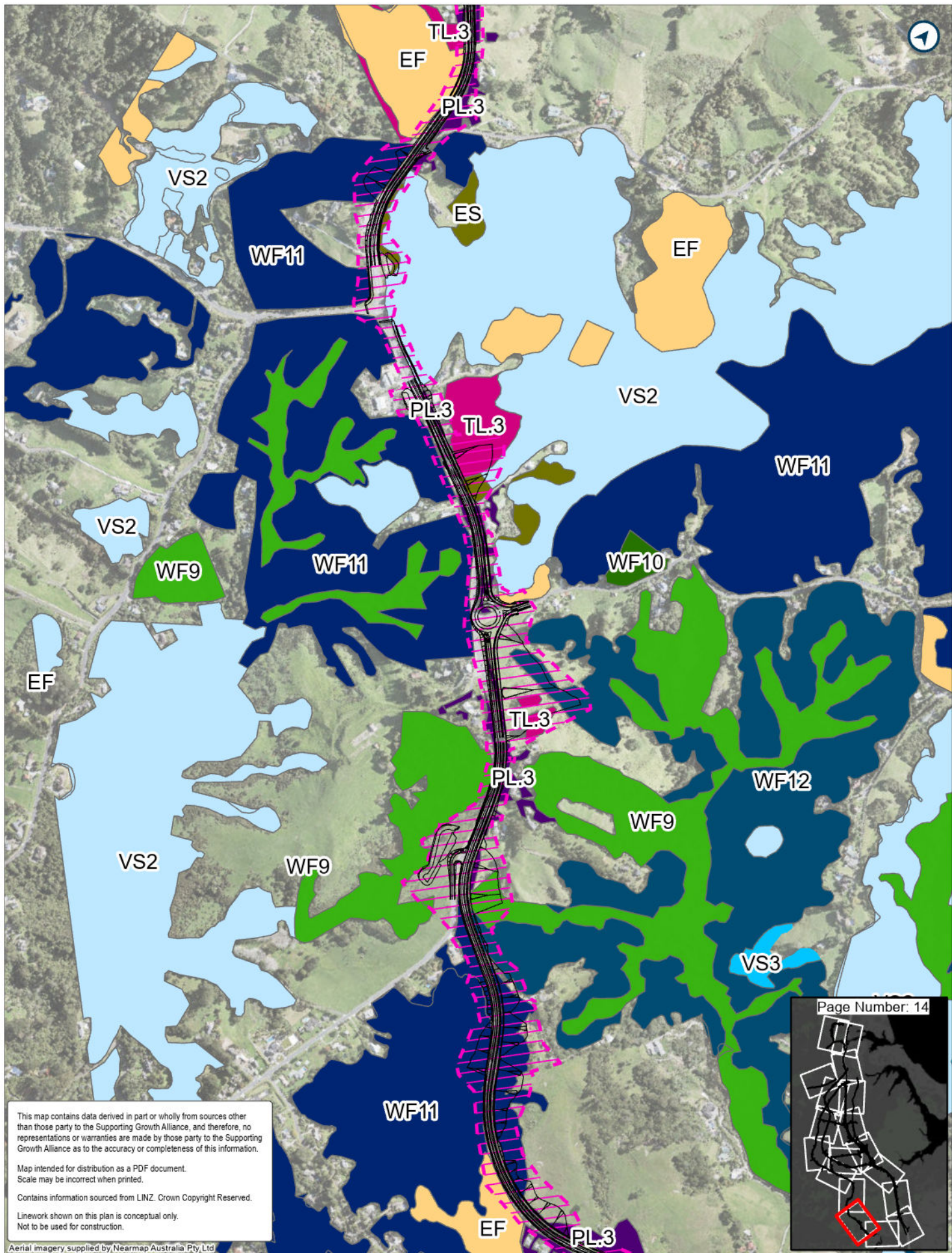
Linework shown on this plan is conceptual only.
Not to be used for construction.



LEGEND

- Route Options
- NOR 8
- NOR 9
- SEA
- EF - Exotic forest
- ES - Exotic scrub
- PL.3 - Planted native and/or amenity plantings
- TL.2 - Treeland (native/exotic mix)
- TL.3 - Exotic treeland
- VS2 - Kānuka scrub/forest
- WF11 - Kauri, podocarp, broadleaved forest





This map contains data derived in part or wholly from sources other than those party to the Supporting Growth Alliance, and therefore, no representations or warranties are made by those party to the Supporting Growth Alliance as to the accuracy or completeness of this information.

Map intended for distribution as a PDF document.
Scale may be incorrect when printed.

Contains information sourced from LINZ. Crown Copyright Reserved.

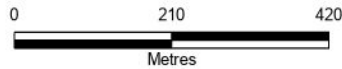
Linework shown on this plan is conceptual only.
Not to be used for construction.

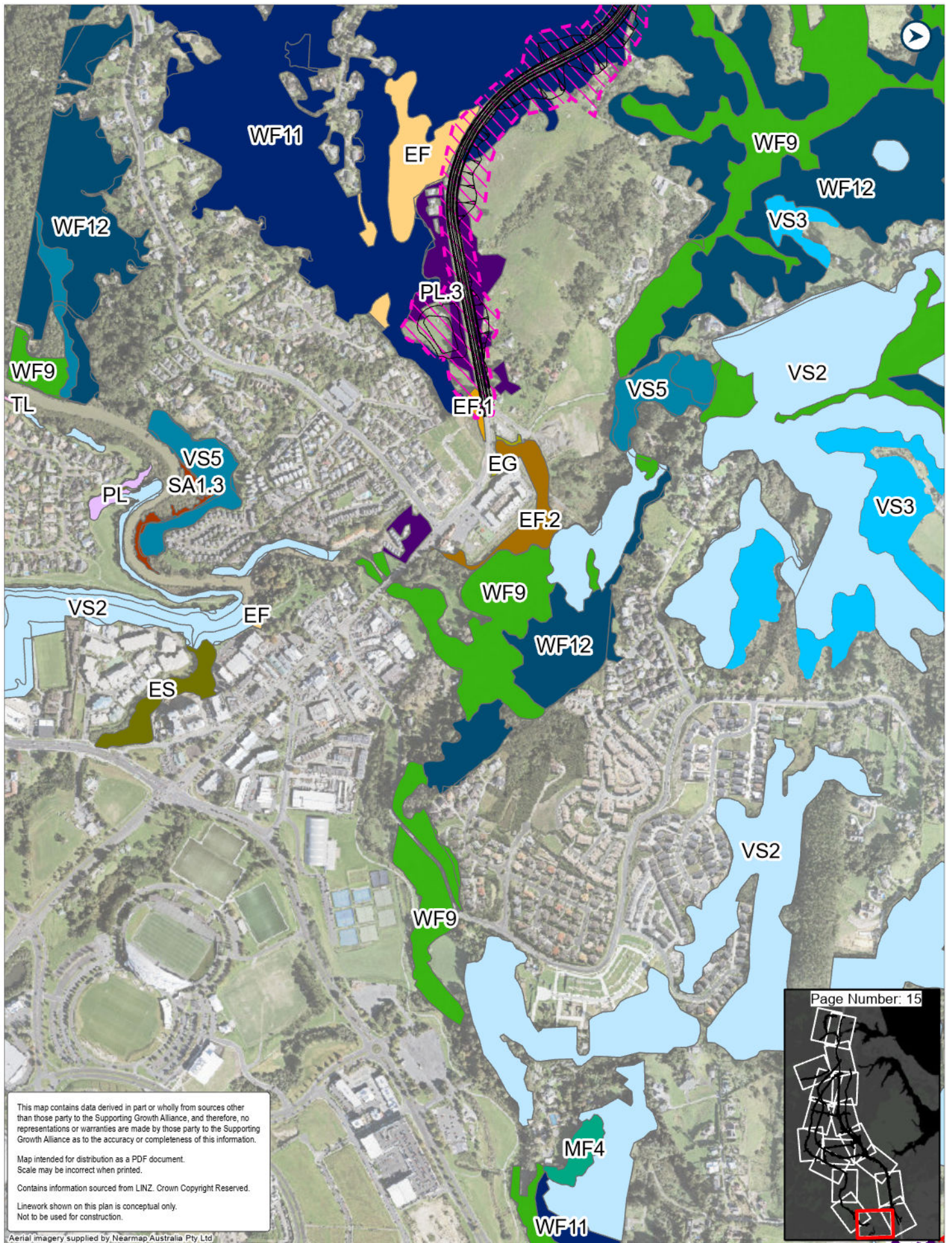


Page Number: 14

LEGEND

- Route Options
- NOR 9
- SEA
- EF - Exotic forest
- ES - Exotic scrub
- PL.3 - Planted
- native and/or amenity plantings
- TL.3 - Exotic treeland
- VS2 - Kānuka scrub/forest
- VS3 - Mānuka, kānuka scrub
- VS5 - Broadleaved species scrub/forest
- WF9 - Taraira, tawa, podocarp forest
- WF10 - Kauri forest
- WF11 - Kauri, podocarp, broadleaved forest
- WF12 - Kauri, podocarp, broadleaved, beech forest





This map contains data derived in part or wholly from sources other than those party to the Supporting Growth Alliance, and therefore, no representations or warranties are made by those party to the Supporting Growth Alliance as to the accuracy or completeness of this information.

Map intended for distribution as a PDF document.
Scale may be incorrect when printed.

Contains information sourced from LINZ. Crown Copyright Reserved.

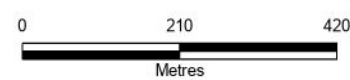
Linework shown on this plan is conceptual only.
Not to be used for construction.

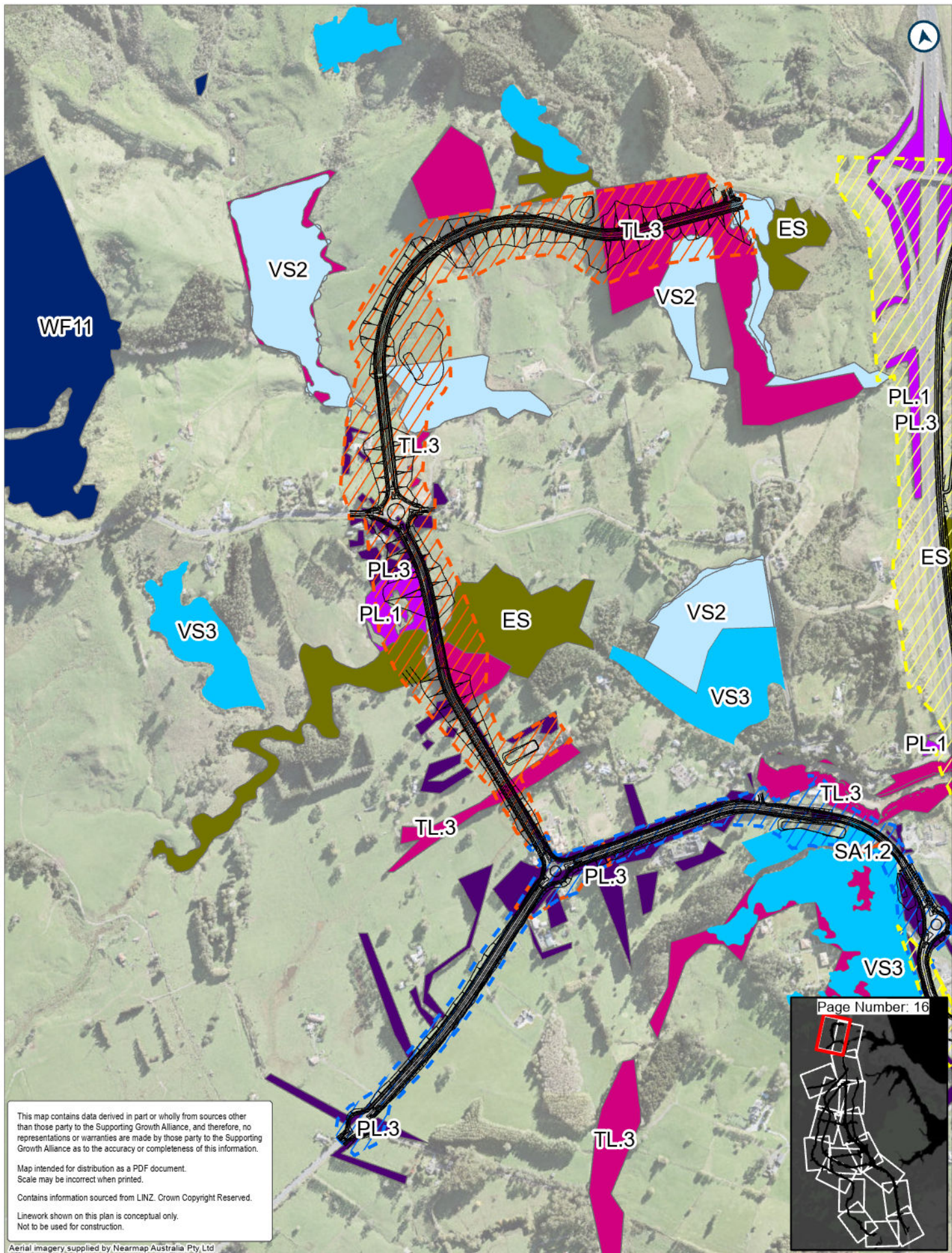
Aerial imagery supplied by Nearmap Australia Pty Ltd



LEGEND

- | | | | |
|--|--|---|--|
| <ul style="list-style-type: none"> — Route Options NOR 1 NOR 9 SEA | <ul style="list-style-type: none"> EF - Exotic forest EF.1 - Exotic forest (>50% native understorey) EF.2 - Exotic forest (<50% native understorey) EG - Exotic grass ES - Exotic scrub | <ul style="list-style-type: none"> PL - Planted vegetation PL.3 - Planted native and/or amenity plantings SA1.3 TL - Treeland | <ul style="list-style-type: none"> VS2 - Kānuka scrub/forest VS3 - Mānuka, kānuka scrub VS5 - Broadleaved species scrub/forest MF4 - Kahikatea forest WF9 - Taraire, tawa, podocarp forest WF11 - Kauri, podocarp, broadleaved forest WF12 - Kauri, podocarp, broadleaved, beech forest |
|--|--|---|--|





This map contains data derived in part or wholly from sources other than those party to the Supporting Growth Alliance, and therefore, no representations or warranties are made by those party to the Supporting Growth Alliance as to the accuracy or completeness of this information.

Map intended for distribution as a PDF document.
Scale may be incorrect when printed.

Contains information sourced from LINZ. Crown Copyright Reserved.

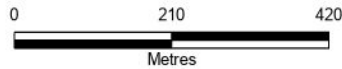
Linework shown on this plan is conceptual only.
Not to be used for construction.

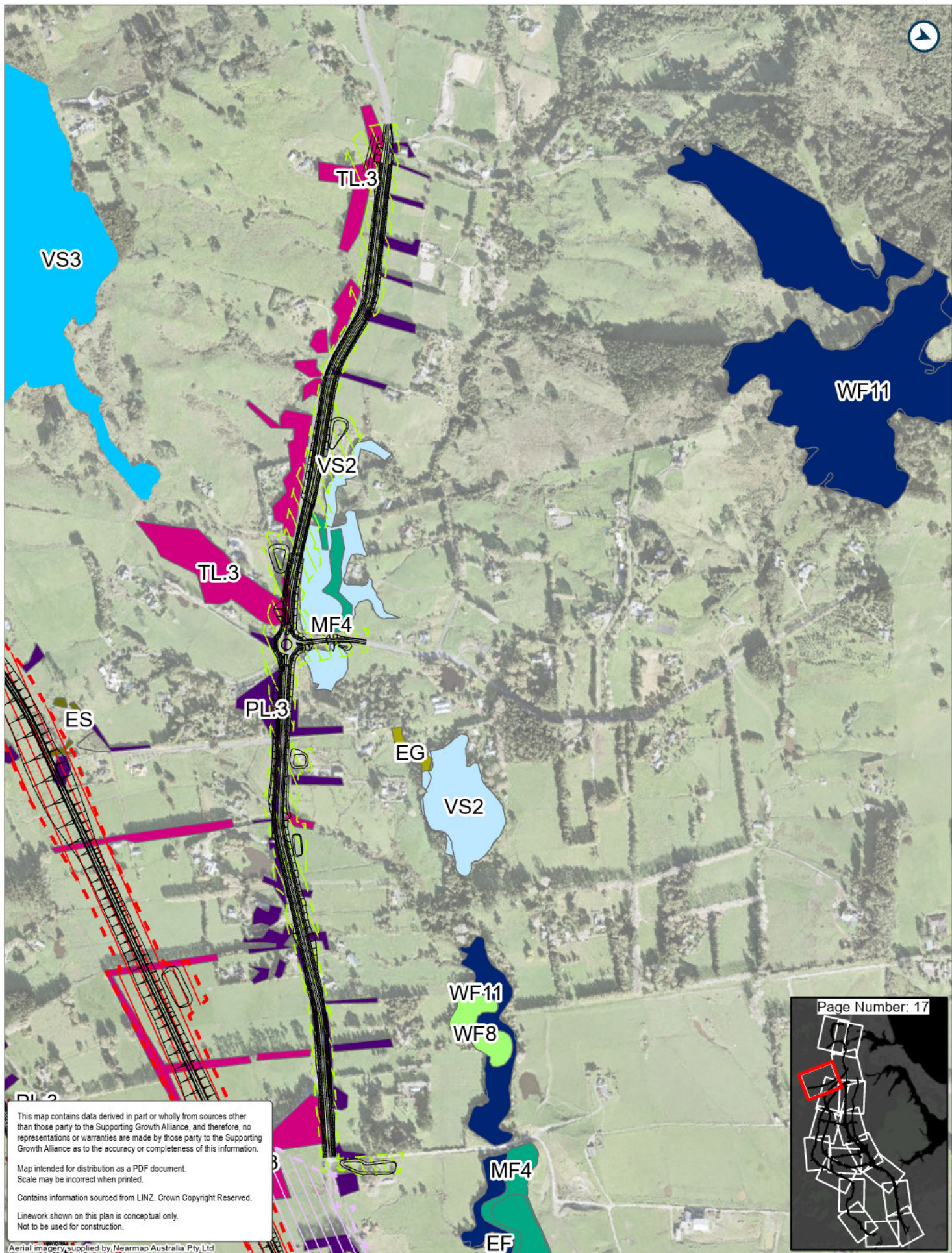
Aerial imagery supplied by Nearmap Australia Pty Ltd



LEGEND

- Route Options
- NOR 4
- NOR 6
- NOR 10
- SEA
- ES - Exotic scrub
- PL.1 - Planted native forest (<20 yrs)
- PL.3 - Planted native and/or amenity plantings
- SA1.2 - Mangrove forest and scrub
- TL.3 - Exotic treeland
- VS2 - Kānuka scrub/forest
- VS3 - Mānuka, kānuka scrub
- WF11 - Kauri, podocarp, broadleaved forest





Path: P:\381034\10234\10102_Dat11_Data_Processing_530_Plus\900_Ecology_North_Sandy\SGA_Ecology_Terrrestrial_Vegetation_Supply_20230421.aprx

This map contains data derived in part or wholly from sources other than those party to the Supporting Growth Alliance, and therefore, no representations or warranties are made by those party to the Supporting Growth Alliance as to the accuracy or completeness of this information.

Map intended for distribution as a PDF document.
Scale may be incorrect when printed.

Contains information sourced from LINZ. Crown Copyright Reserved.

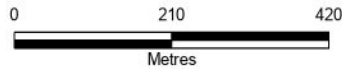
Linework shown on this plan is conceptual only.
Not to be used for construction.

Aerial imagery supplied by Nearmap Australia Pty Ltd



LEGEND

- Route Options
- NOR 8
- ES - Exotic scrub
- PL.3 - Planted native and/or amenity plantings
- TL.3 - Exotic treeland
- VS3 - Mānuka, kānuka scrub
- WF8 - Kahikatea, pukatea forest
- WF11 - Kauri, podocarp, broadleaved forest
- NOR 1
- SEA
- PL.1 - Planted
- VS2 - Kānuka scrub/forest
- MF4 - Kahikatea forest
- NOR 3
- EF - Exotic forest
- EG - Exotic grass
- native forest (<20 yrs)





This map contains data derived in part or wholly from sources other than those party to the Supporting Growth Alliance, and therefore, no representations or warranties are made by those party to the Supporting Growth Alliance as to the accuracy or completeness of this information.

Map intended for distribution as a PDF document.
Scale may be incorrect when printed.

Contains information sourced from LINZ. Crown Copyright Reserved.

Linework shown on this plan is conceptual only.
Not to be used for construction.

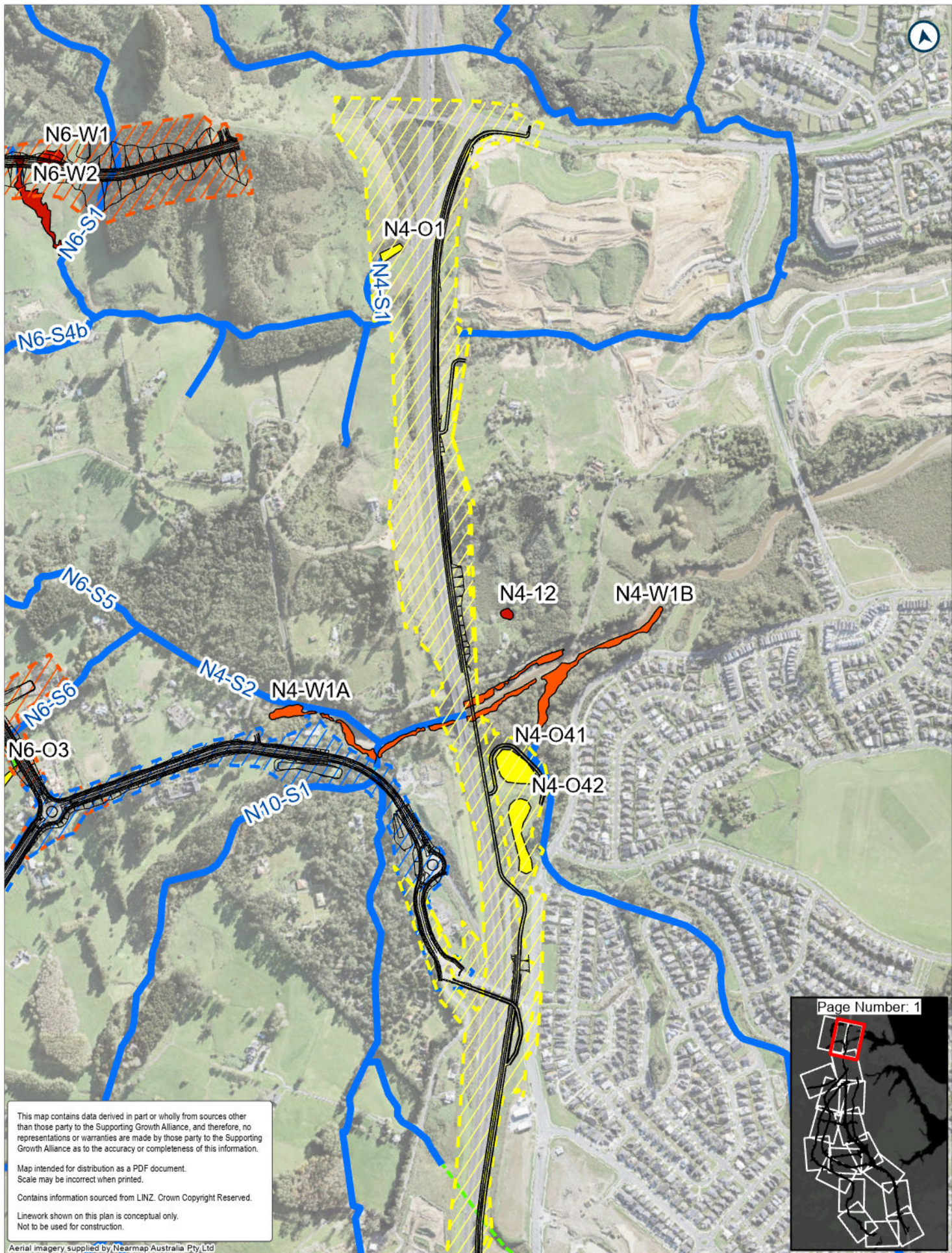
Aerial imagery supplied by Nearmap Australia Pty Ltd



LEGEND

- Route Options
- NOR 1
- ES - Exotic scrub
- TL.3 - Exotic treeland
- NOR 2
- PL.3 - Planted
- native and/or amenity plantings
- NOR 4
- EF - Exotic forest
- VS2 - Kānuka scrub/forest





This map contains data derived in part or wholly from sources other than those party to the Supporting Growth Alliance, and therefore, no representations or warranties are made by those party to the Supporting Growth Alliance as to the accuracy or completeness of this information.

Map intended for distribution as a PDF document.
Scale may be incorrect when printed.

Contains information sourced from LINZ. Crown Copyright Reserved.

Linework shown on this plan is conceptual only.
Not to be used for construction.

Aerial imagery supplied by Nearmap Australia Pty Ltd



Page Number: 1

LEGEND

- Route Options
- NOR 10
- SA1.2 - Mangrove forest and scrub
- Artificial/Piped/Culvert
- Permanent
- NOR 4
- OW - Open water
- Artificial swale/drainage ditch
- Bridge
- Intermittent
- NOR 6
- EW - Exotic Wetland

