

This map contains data derived in part or wholly from sources other than those party to the Supporting Growth Alliance, and therefore, no representations or warranties are made by those party to the Supporting Growth Alliance as to the accuracy or completeness of this information.

Map intended for distribution as a PDF document.
Scale may be incorrect when printed.

Contains information sourced from LINZ. Crown Copyright Reserved.

Linework shown on this plan is conceptual only.
Not to be used for construction.

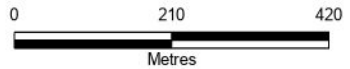
Aerial imagery supplied by Nearmap Australia Pty Ltd

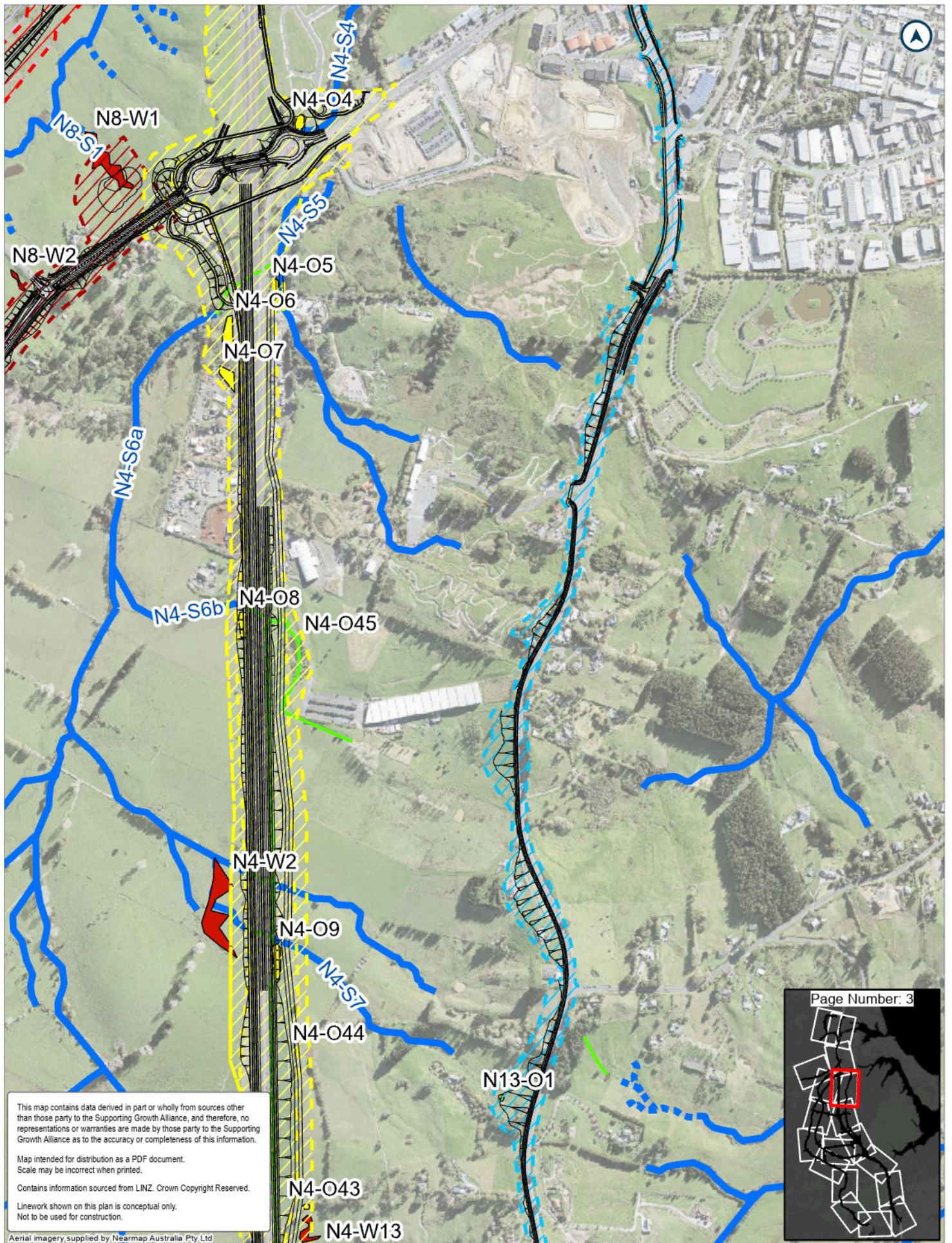


Page Number: 2

LEGEND

- Route Options
- NOR 3
- NOR 8
- EW - Exotic Wetland
- Artificial/Piped/Culvert
- Permanent
- NOR 1
- NOR 4
- NOR 13
- Artificial swale/drainage ditch
- Intermittent
- NOR 2
- NOR 7
- OW - Open water





This map contains data derived in part or wholly from sources other than those party to the Supporting Growth Alliance, and therefore, no representations or warranties are made by those party to the Supporting Growth Alliance as to the accuracy or completeness of this information.

Map intended for distribution as a PDF document.
Scale may be incorrect when printed.

Contains information sourced from LINZ. Crown Copyright Reserved.

Linework shown on this plan is conceptual only.
Not to be used for construction.

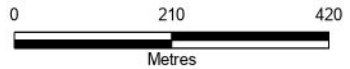
Aerial imagery supplied by Nearmap Australia Pty Ltd

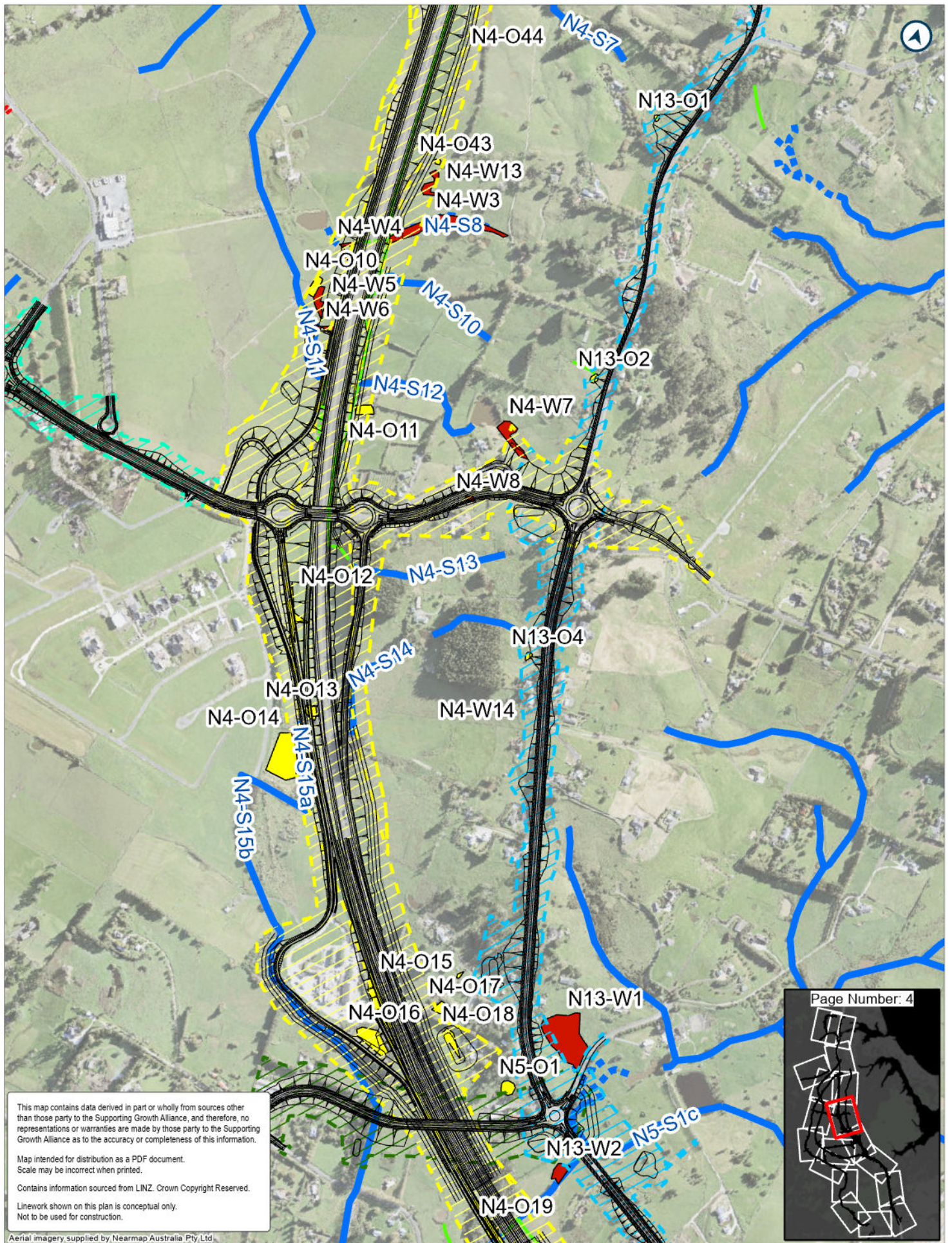


Page Number: 3

LEGEND

- Route Options
- NOR 4
- OW - Open water
- Artificial swale/drainage ditch
- NOR 1
- NOR 8
- EW - Exotic Wetland
- Artificial/Piped/Culvert
- NOR 3
- NOR 13
- Intermittent
- Permanent





This map contains data derived in part or wholly from sources other than those party to the Supporting Growth Alliance, and therefore, no representations or warranties are made by those party to the Supporting Growth Alliance as to the accuracy or completeness of this information.

Map intended for distribution as a PDF document.
Scale may be incorrect when printed.

Contains information sourced from LINZ. Crown Copyright Reserved.

Linework shown on this plan is conceptual only.
Not to be used for construction.

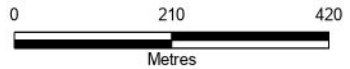
Aerial imagery supplied by Nearmap Australia Pty Ltd.

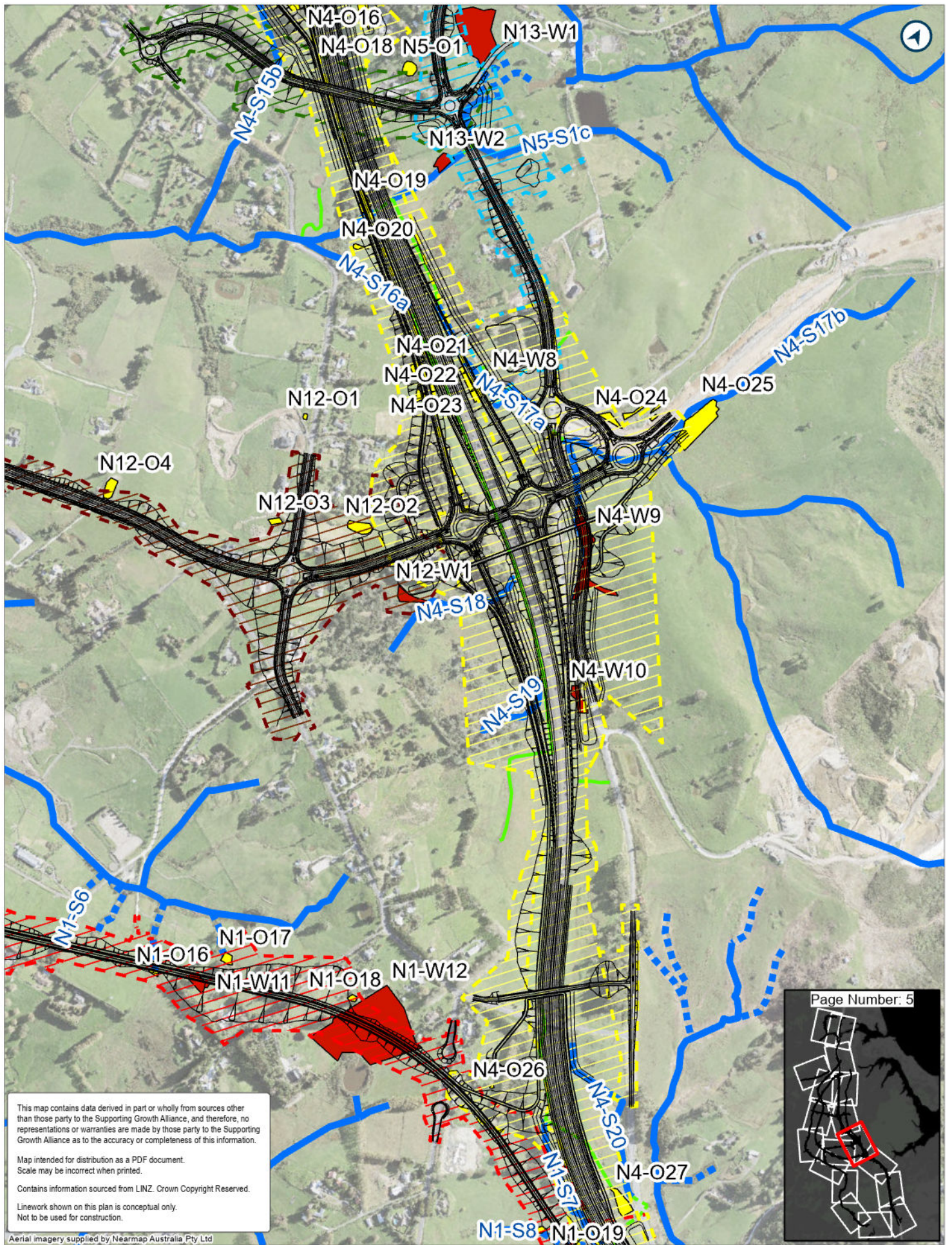


Page Number: 4

LEGEND

- | | | | | | |
|-----------------|--------|------------------------|-------------------------------------|------------------------------|-----------|
| — Route Options | NOR 5 | OW - Open water | Artificial swale/ drainage ditch | Artificial/Piped/ Culvert | Permanent |
| NOR 1 | NOR 11 | EW - Exotic Wetland | | Intermittent | |
| NOR 4 | NOR 13 | | | | |





This map contains data derived in part or wholly from sources other than those party to the Supporting Growth Alliance, and therefore, no representations or warranties are made by those party to the Supporting Growth Alliance as to the accuracy or completeness of this information.

Map intended for distribution as a PDF document.
Scale may be incorrect when printed.

Contains information sourced from LINZ. Crown Copyright Reserved.

Linework shown on this plan is conceptual only.
Not to be used for construction.

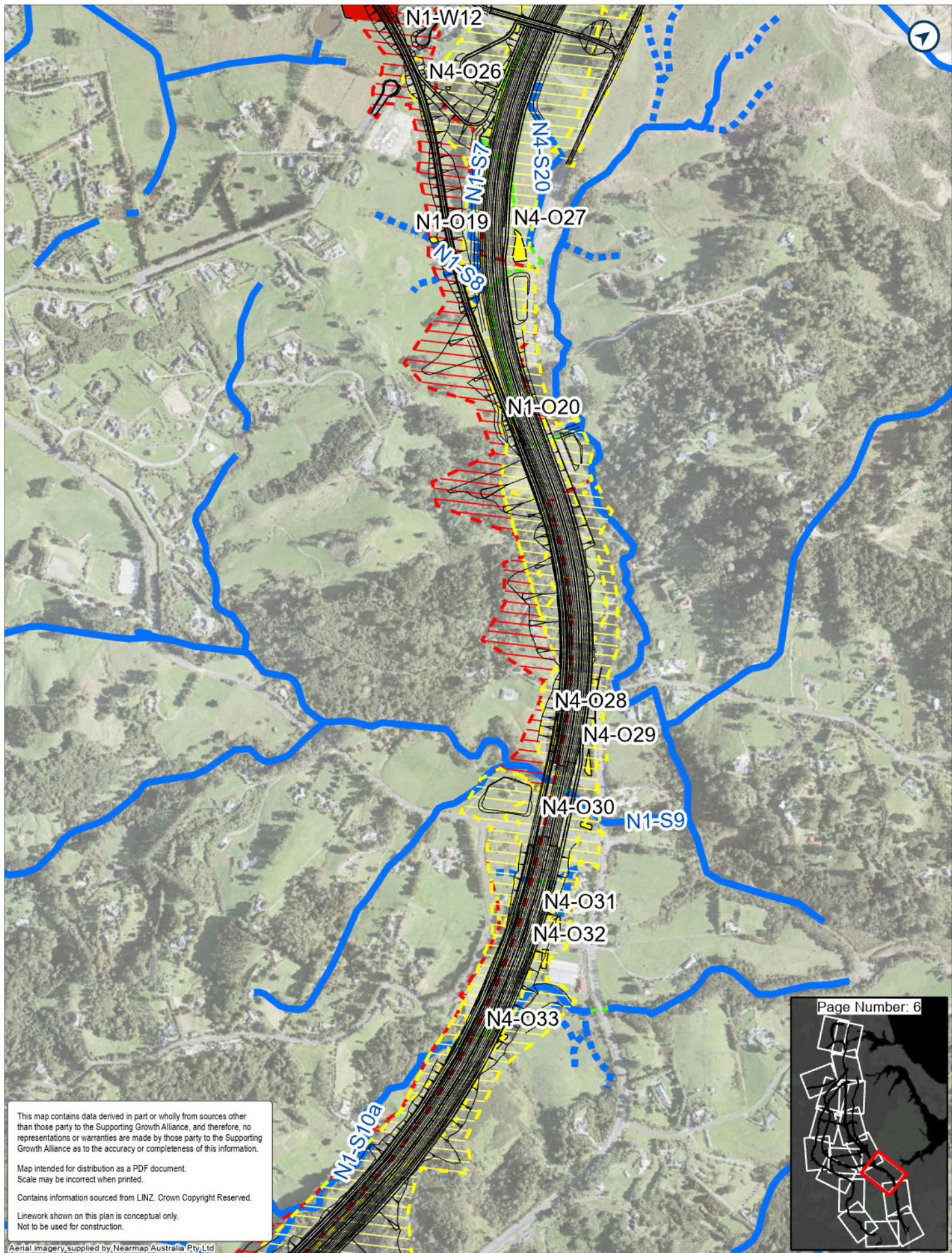
Aerial imagery supplied by Nearmap Australia Pty Ltd



LEGEND

- Route Options
- NOR 5
- OW - Open water
- Artificial swale/drainage ditch
- Artificial/Piped/Culvert
- NOR 1
- NOR 12
- EW - Exotic Wetland
- Intermittent
- Permanent
- NOR 4
- NOR 13





This map contains data derived in part or wholly from sources other than those party to the Supporting Growth Alliance, and therefore, no representations or warranties are made by those party to the Supporting Growth Alliance as to the accuracy or completeness of this information.

Map intended for distribution as a PDF document.
Scale may be incorrect when printed.

Contains information sourced from LINZ. Crown Copyright Reserved.

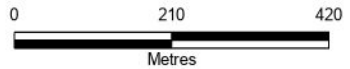
Linework shown on this plan is conceptual only.
Not to be used for construction.

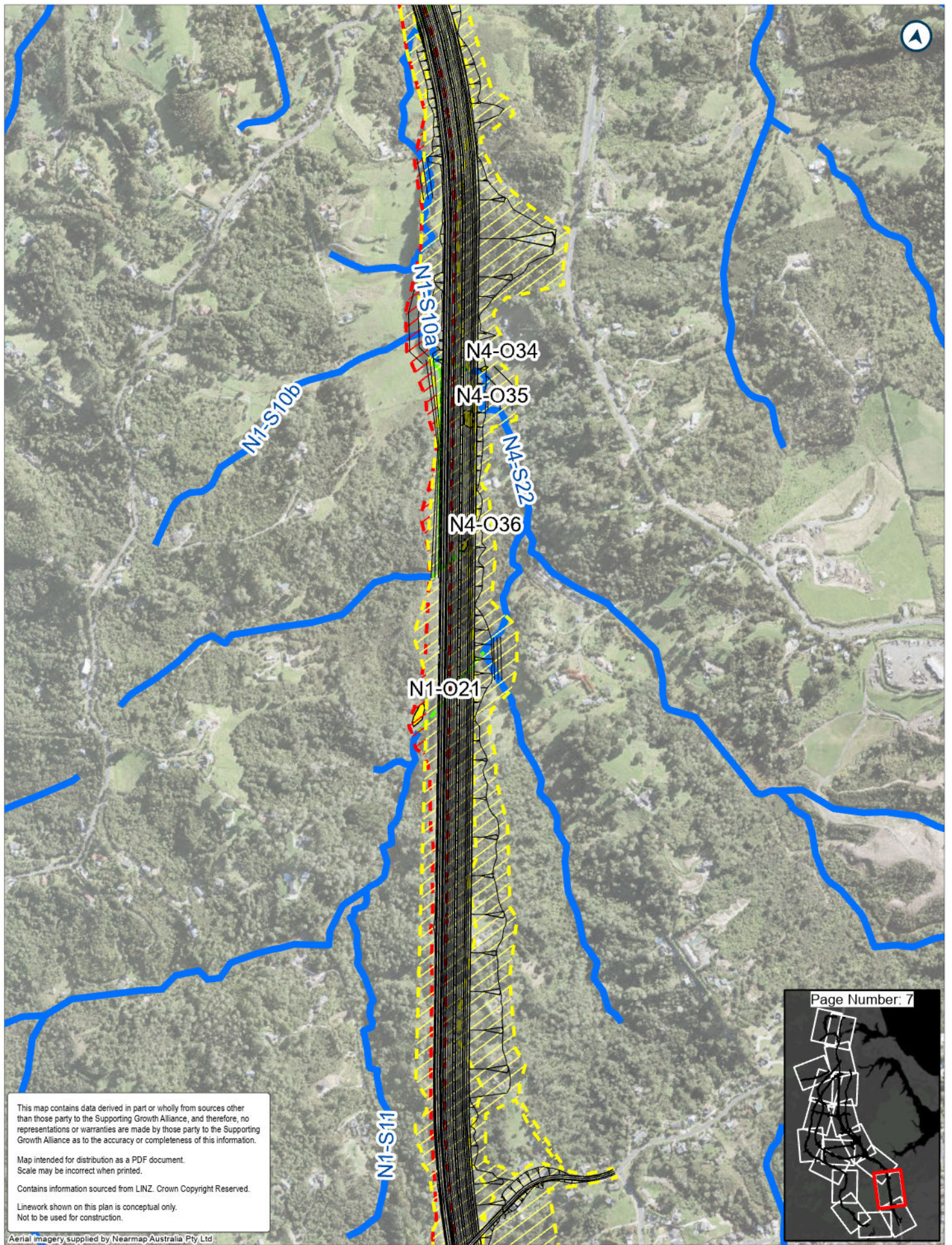
Aerial Imagery supplied by Nearmap Australia Pty Ltd



LEGEND

- Route Options
- NOR 1
- NOR 4
- OW - Open water
- EW - Exotic Wetland
- Artificial swale/ drainage ditch
- Artificial/Piped/ Culvert
- Bridge
- Intermittent
- Permanent





This map contains data derived in part or wholly from sources other than those party to the Supporting Growth Alliance, and therefore, no representations or warranties are made by those party to the Supporting Growth Alliance as to the accuracy or completeness of this information.

Map intended for distribution as a PDF document.
Scale may be incorrect when printed.

Contains information sourced from LINZ. Crown Copyright Reserved.

Linework shown on this plan is conceptual only.
Not to be used for construction.

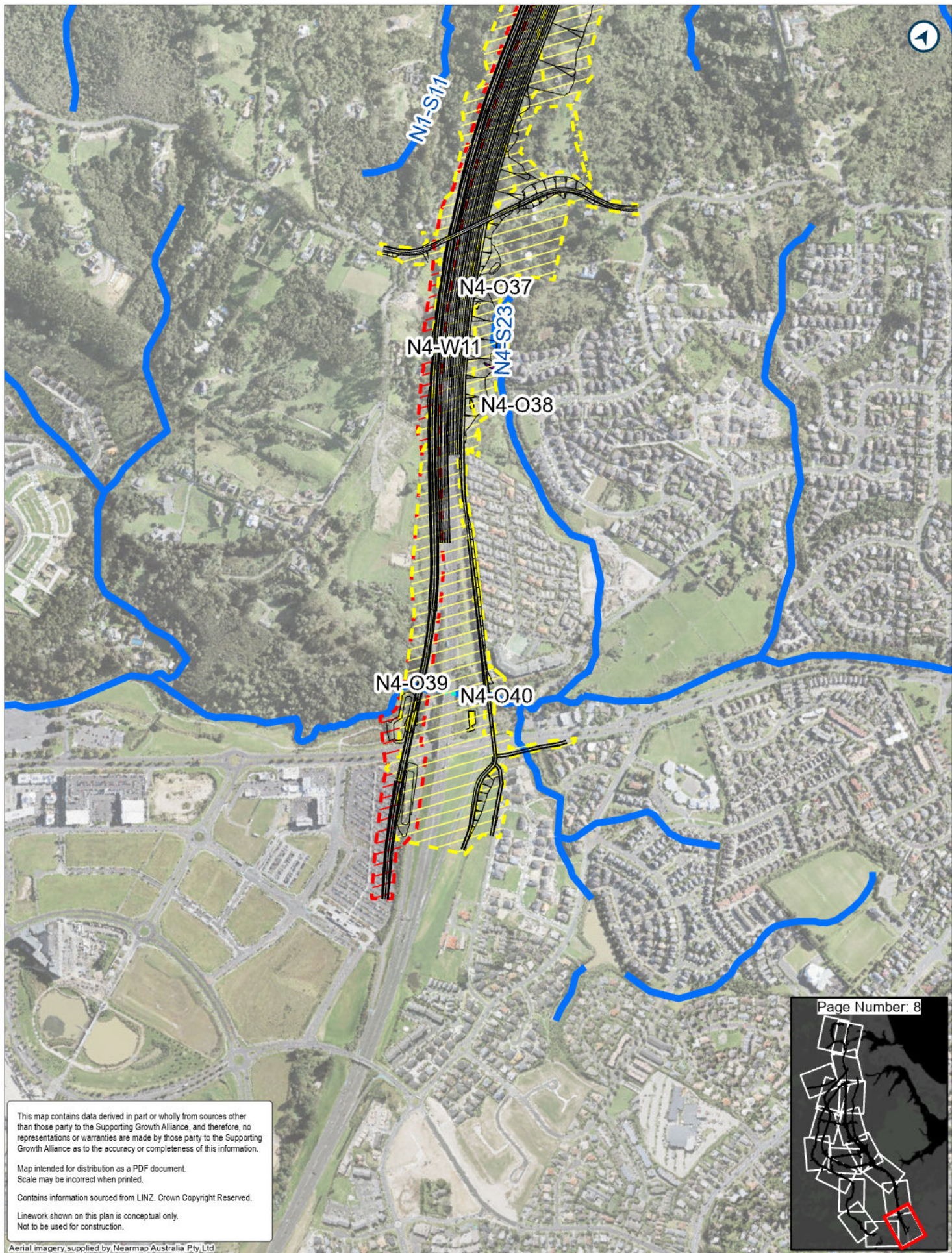
Aerial Imagery supplied by Nearmap Australia Pty Ltd



LEGEND

- Route Options
- NOR 1
- NOR 4
- OW - Open water
- Artificial swale/ drainage ditch
- Artificial/Piped/ Culvert
- Permanent





This map contains data derived in part or wholly from sources other than those party to the Supporting Growth Alliance, and therefore, no representations or warranties are made by those party to the Supporting Growth Alliance as to the accuracy or completeness of this information.

Map intended for distribution as a PDF document.
Scale may be incorrect when printed.

Contains information sourced from LINZ. Crown Copyright Reserved.

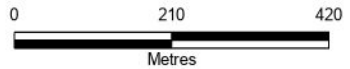
Linework shown on this plan is conceptual only.
Not to be used for construction.

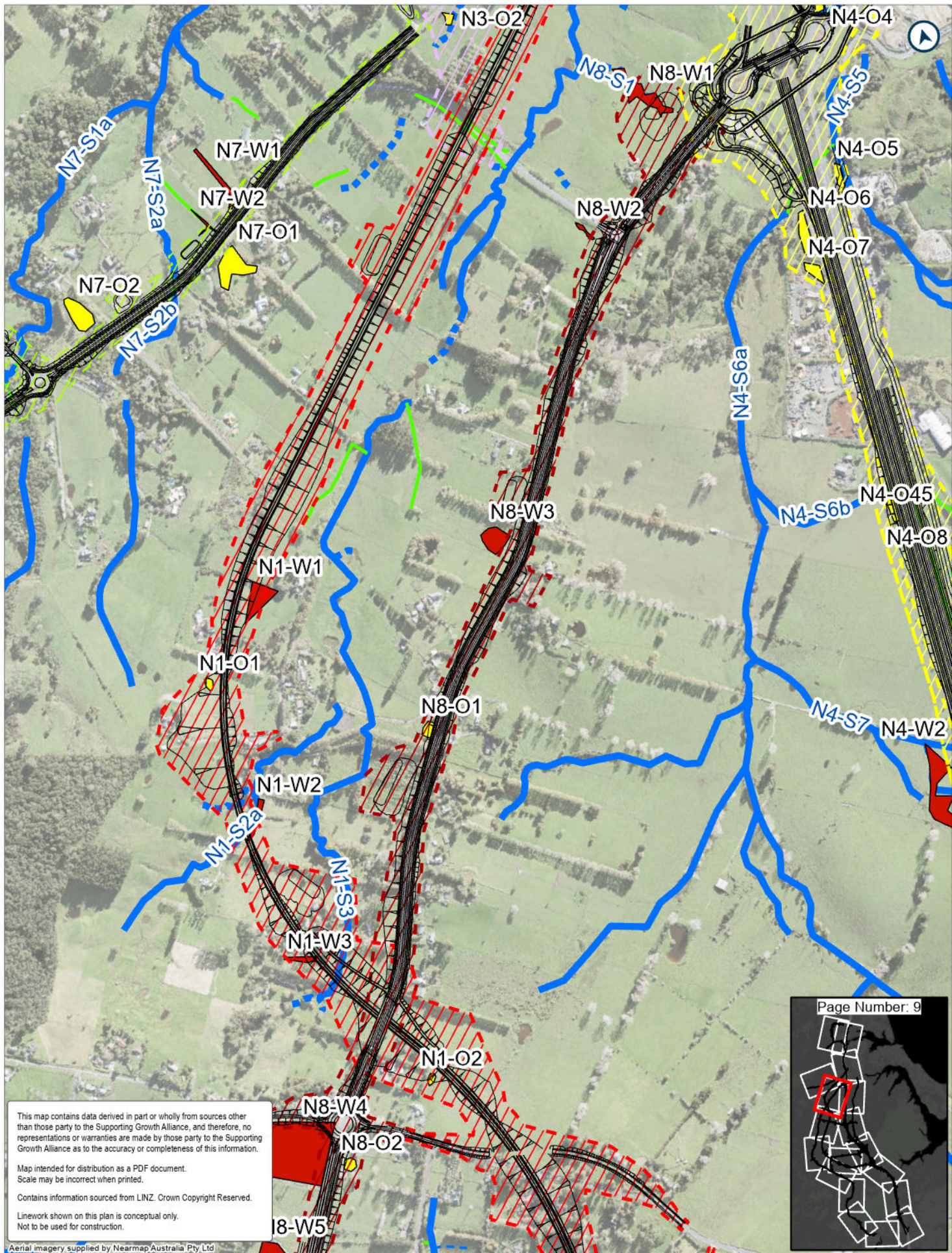
Aerial imagery supplied by Nearmap Australia Pty Ltd



LEGEND

- Route Options
- NOR 1
- NOR 4
- OW - Open water
- EW - Exotic Wetland, WL14 - Herbfield
- Bridge
- Permanent





This map contains data derived in part or wholly from sources other than those party to the Supporting Growth Alliance, and therefore, no representations or warranties are made by those party to the Supporting Growth Alliance as to the accuracy or completeness of this information.

Map intended for distribution as a PDF document.
Scale may be incorrect when printed.

Contains information sourced from LINZ. Crown Copyright Reserved.

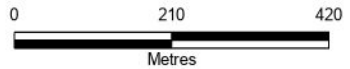
Linework shown on this plan is conceptual only.
Not to be used for construction.

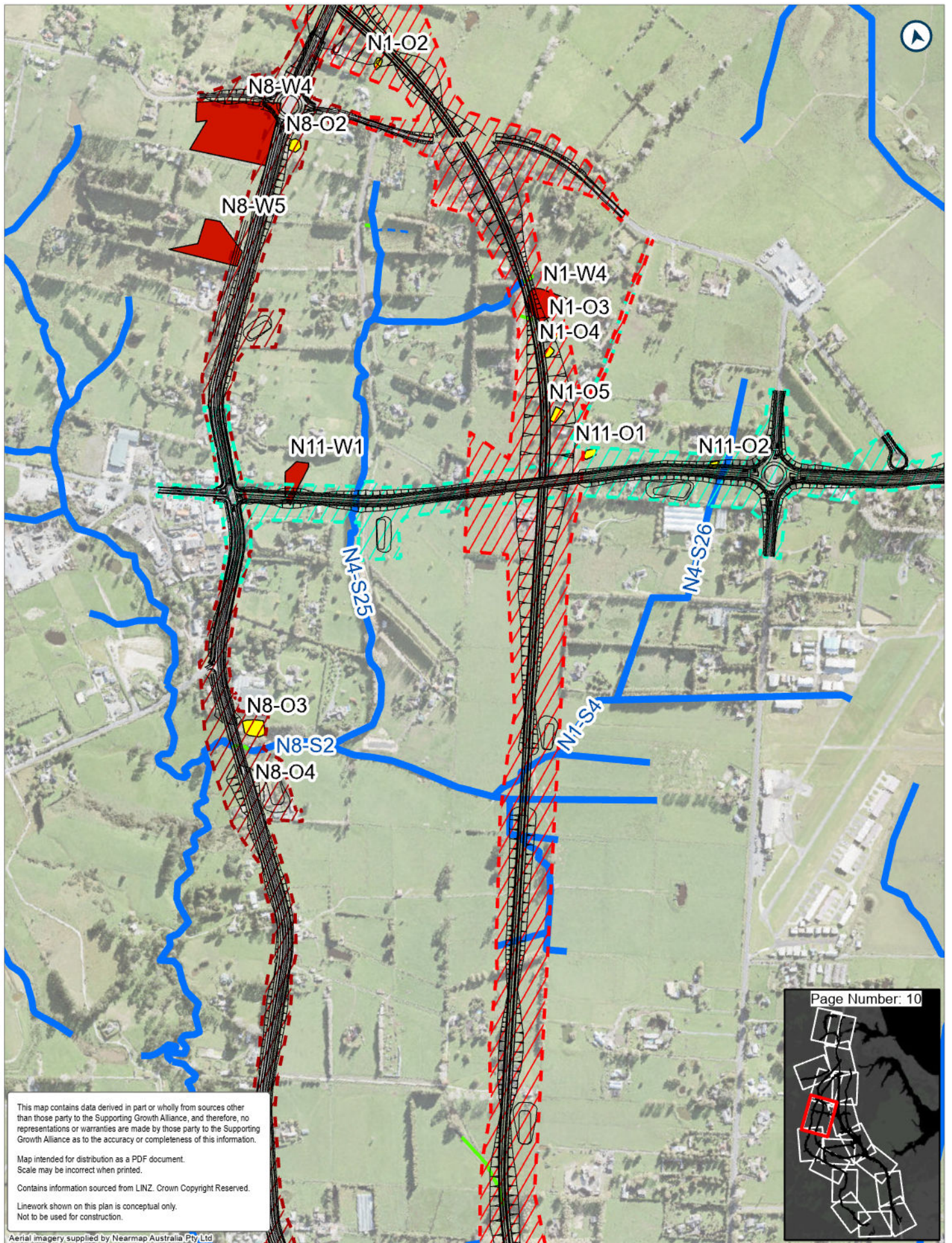
Aerial imagery supplied by Nearmap Australia Pty Ltd



LEGEND

- Route Options
- NOR 4
- NOR 11
- EW - Exotic Wetland
- Artificial/Piped/Culvert
- NOR 1
- NOR 7
- OW - Open water
- Artificial swale/drainage ditch
- Intermittent
- NOR 3
- NOR 8
- Permanent
- Ephemeral





This map contains data derived in part or wholly from sources other than those party to the Supporting Growth Alliance, and therefore, no representations or warranties are made by those party to the Supporting Growth Alliance as to the accuracy or completeness of this information.

Map intended for distribution as a PDF document.
Scale may be incorrect when printed.

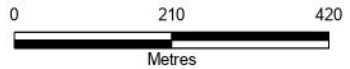
Contains information sourced from LINZ. Crown Copyright Reserved.

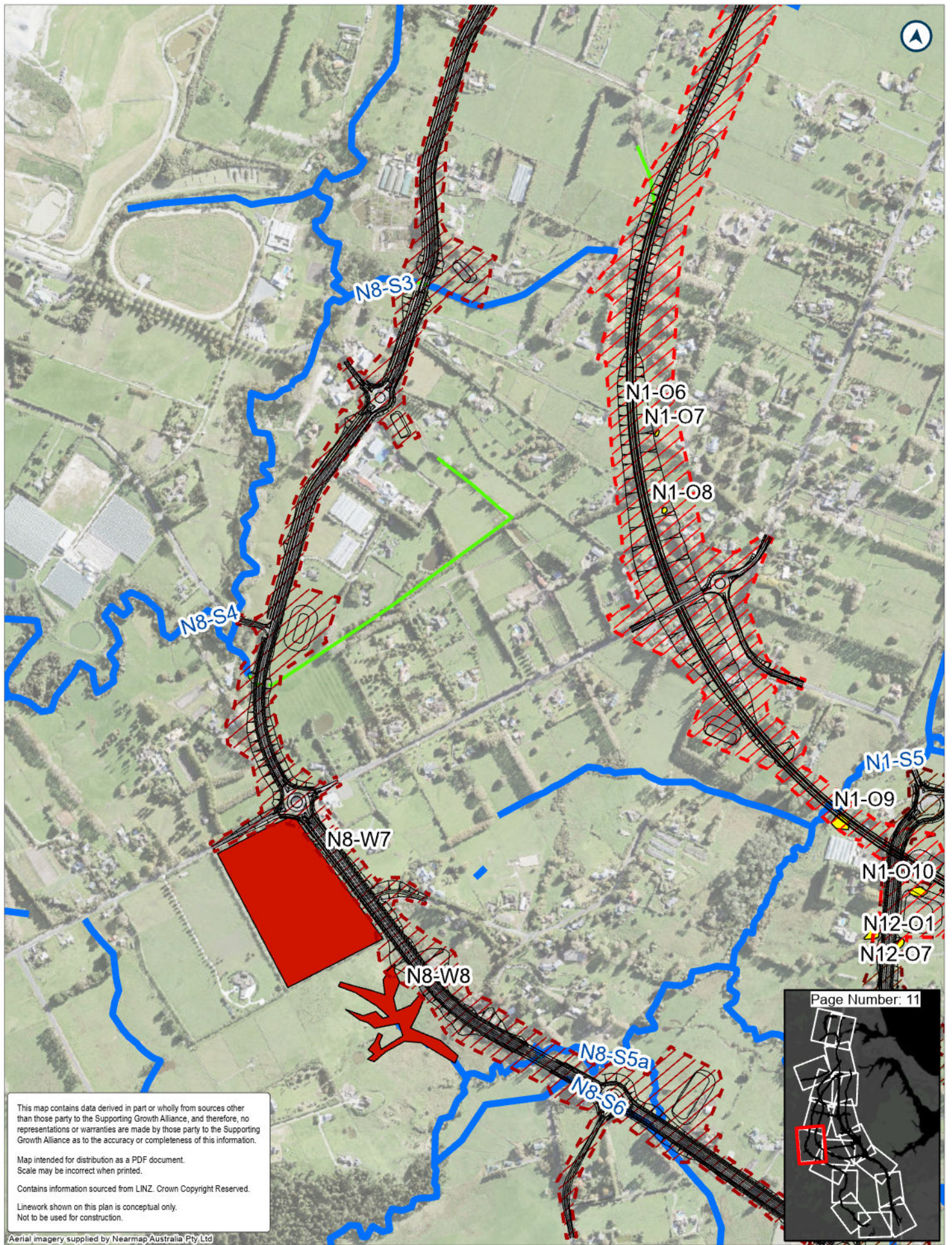
Linework shown on this plan is conceptual only.
Not to be used for construction.



LEGEND

- Route Options
- ▨ NOR 1
- ▨ NOR 8
- ▨ NOR 11
- OW - Open water
- EW - Exotic Wetland
- Artificial swale/drainage ditch
- Artificial/Piped/Culvert
- - - Ephemeral
- Permanent





This map contains data derived in part or wholly from sources other than those party to the Supporting Growth Alliance, and therefore, no representations or warranties are made by those party to the Supporting Growth Alliance as to the accuracy or completeness of this information.

Map intended for distribution as a PDF document.
Scale may be incorrect when printed.

Contains information sourced from LINZ. Crown Copyright Reserved.

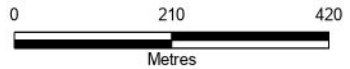
Linework shown on this plan is conceptual only.
Not to be used for construction.

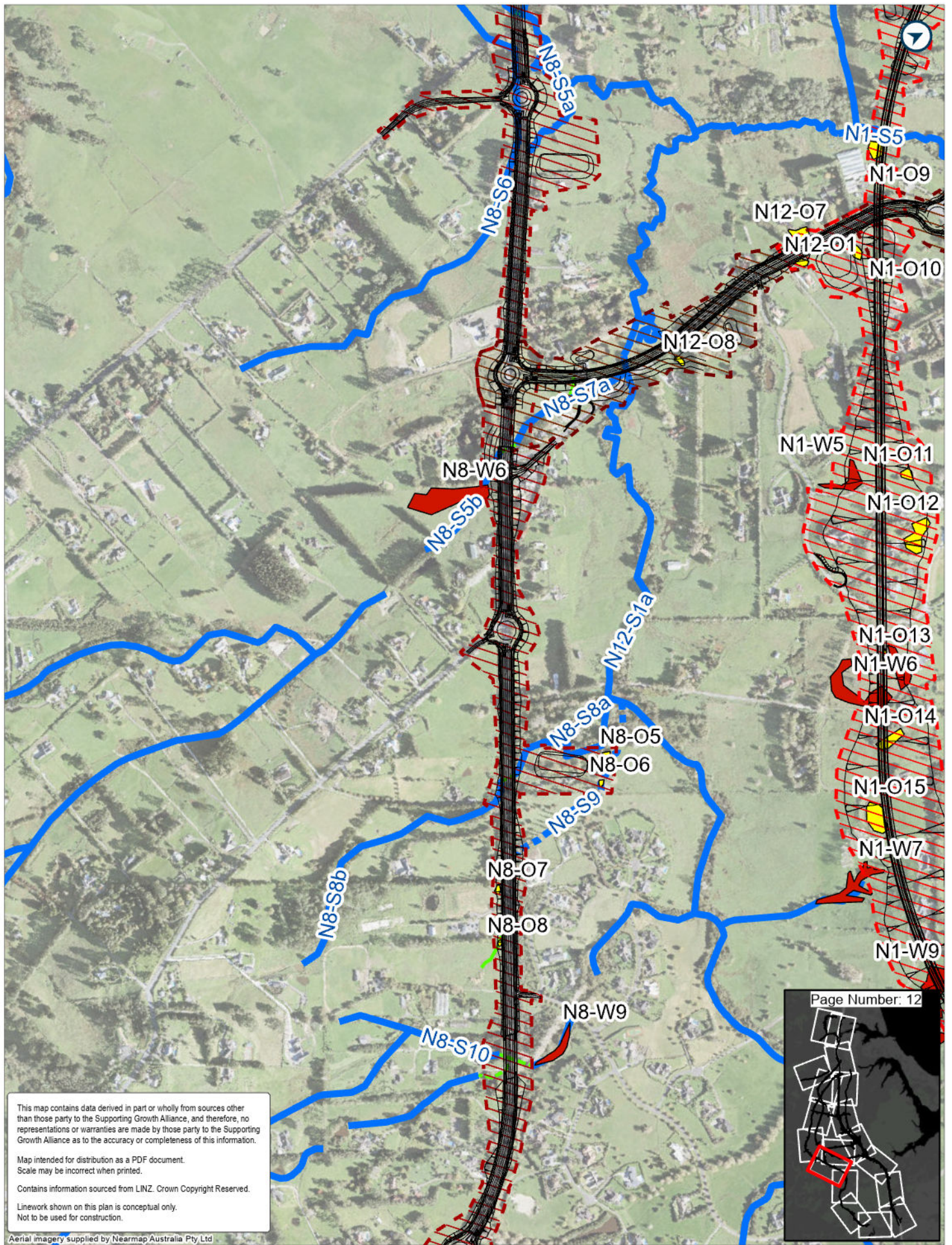
Aerial imagery supplied by Nearmap Australia Pty Ltd



LEGEND

- Route Options
- NOR 12
- EW - Exotic Wetland
- Artificial/Piped/Culvert
- Intermittent
- NOR 8
- OW - Open water
- Bridge
- Permanent





This map contains data derived in part or wholly from sources other than those party to the Supporting Growth Alliance, and therefore, no representations or warranties are made by those party to the Supporting Growth Alliance as to the accuracy or completeness of this information.

Map intended for distribution as a PDF document.
Scale may be incorrect when printed.

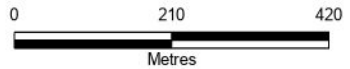
Contains information sourced from LINZ. Crown Copyright Reserved.

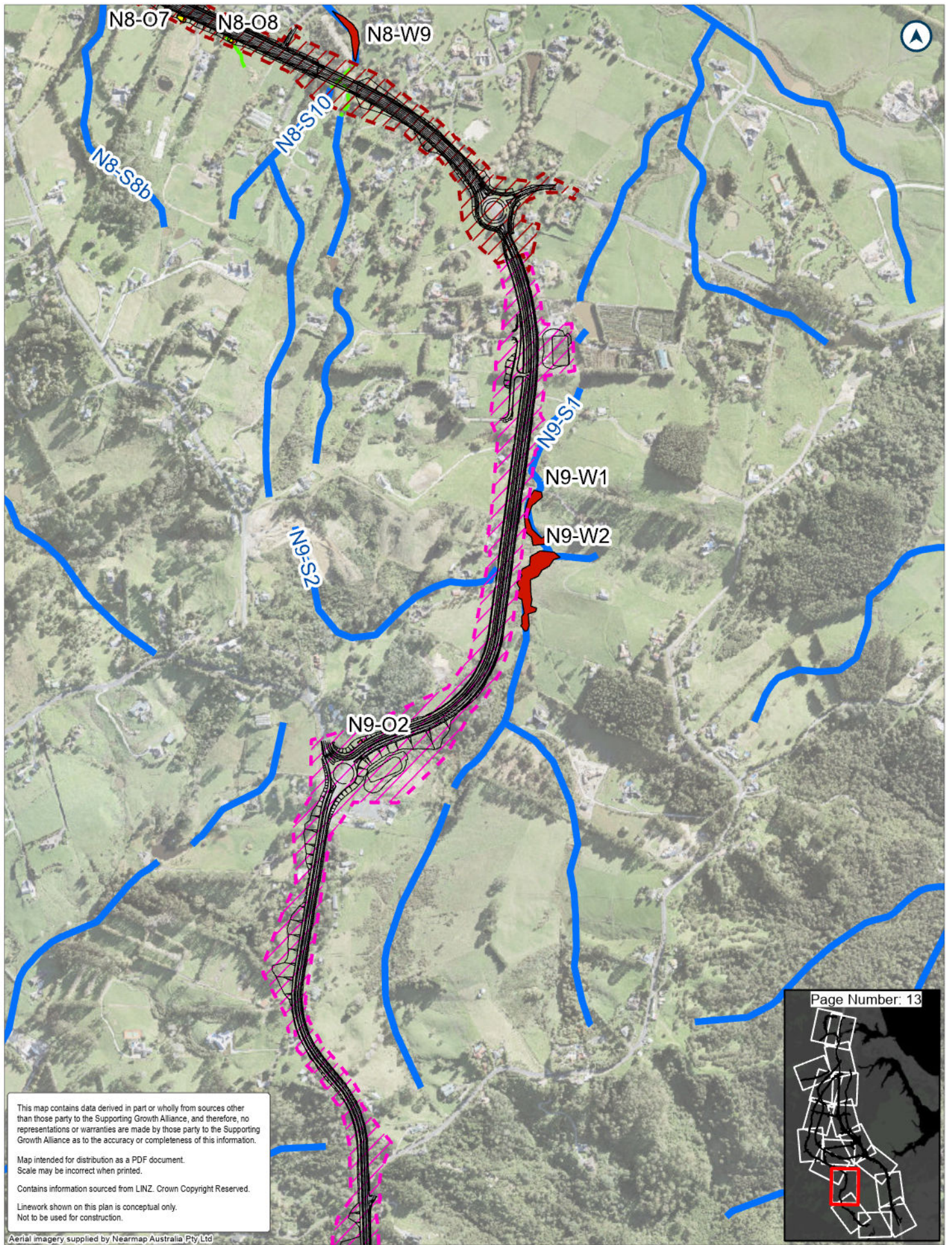
Linework shown on this plan is conceptual only.
Not to be used for construction.



LEGEND

- | | | | | |
|---------------|-----------------|---------------------------------|--------------------------|--------------|
| Route Options | NOR 12 | EW - Exotic Wetland | Artificial/Piped/Culvert | Intermittent |
| NOR 1 | OW - Open water | Artificial swale/drainage ditch | Bridge | Permanent |
| NOR 8 | | | | |





This map contains data derived in part or wholly from sources other than those party to the Supporting Growth Alliance, and therefore, no representations or warranties are made by those party to the Supporting Growth Alliance as to the accuracy or completeness of this information.

Map intended for distribution as a PDF document.
Scale may be incorrect when printed.

Contains information sourced from LINZ. Crown Copyright Reserved.

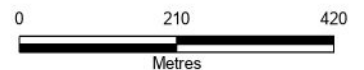
Linework shown on this plan is conceptual only.
Not to be used for construction.

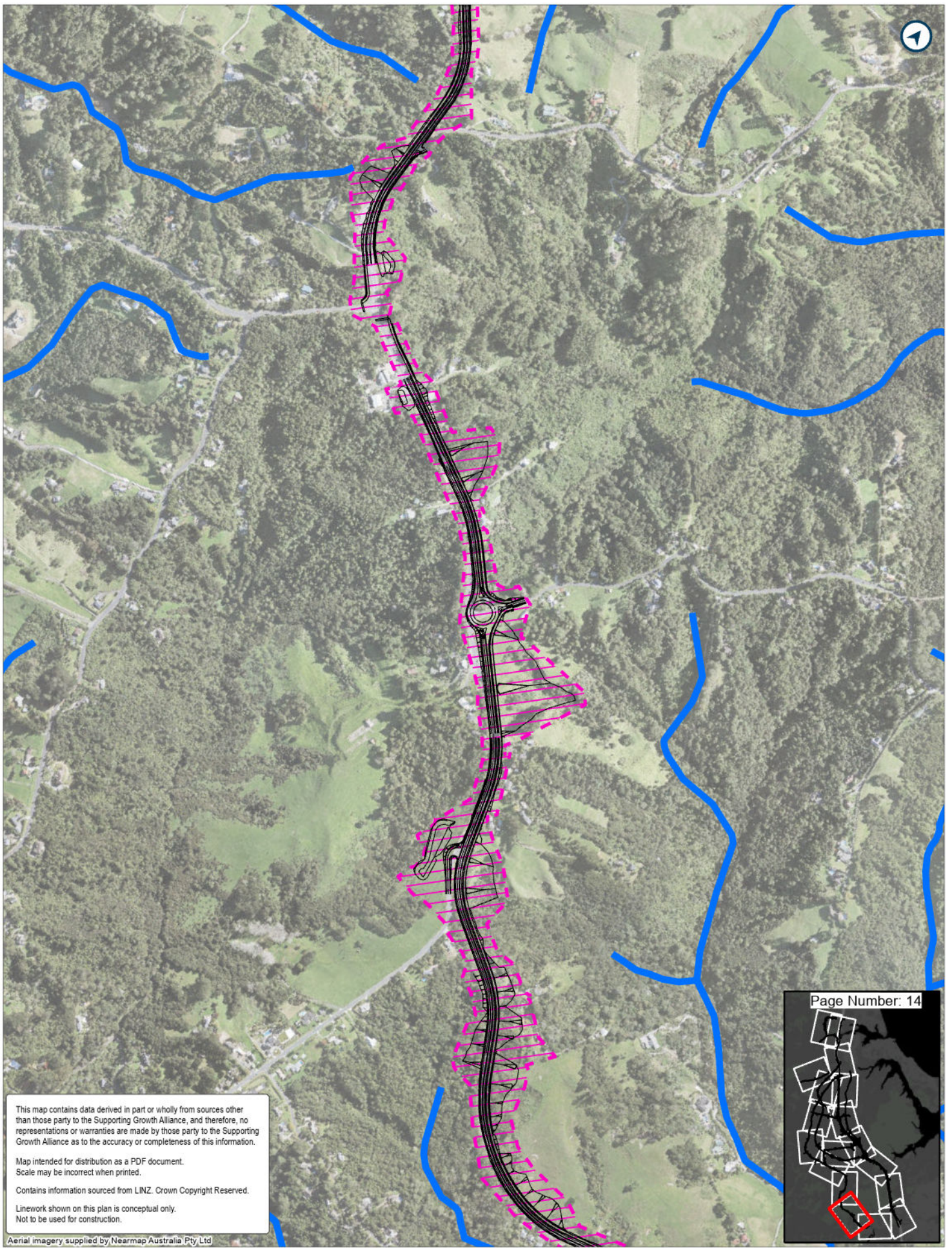
Aerial Imagery supplied by Nearmap Australia Pty Ltd



LEGEND

- Route Options
- NOR 9
- EW - Exotic Wetland
- Artificial swale/ drainage ditch
- OW - Open water
- Artificial/Piped/ Culvert
- NOR 8
- Permanent





This map contains data derived in part or wholly from sources other than those party to the Supporting Growth Alliance, and therefore, no representations or warranties are made by those party to the Supporting Growth Alliance as to the accuracy or completeness of this information.

Map intended for distribution as a PDF document.
Scale may be incorrect when printed.

Contains information sourced from LINZ. Crown Copyright Reserved.

Linework shown on this plan is conceptual only.
Not to be used for construction.

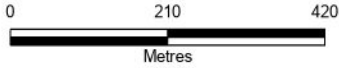
Aerial imagery supplied by Nearmap Australia Pty Ltd

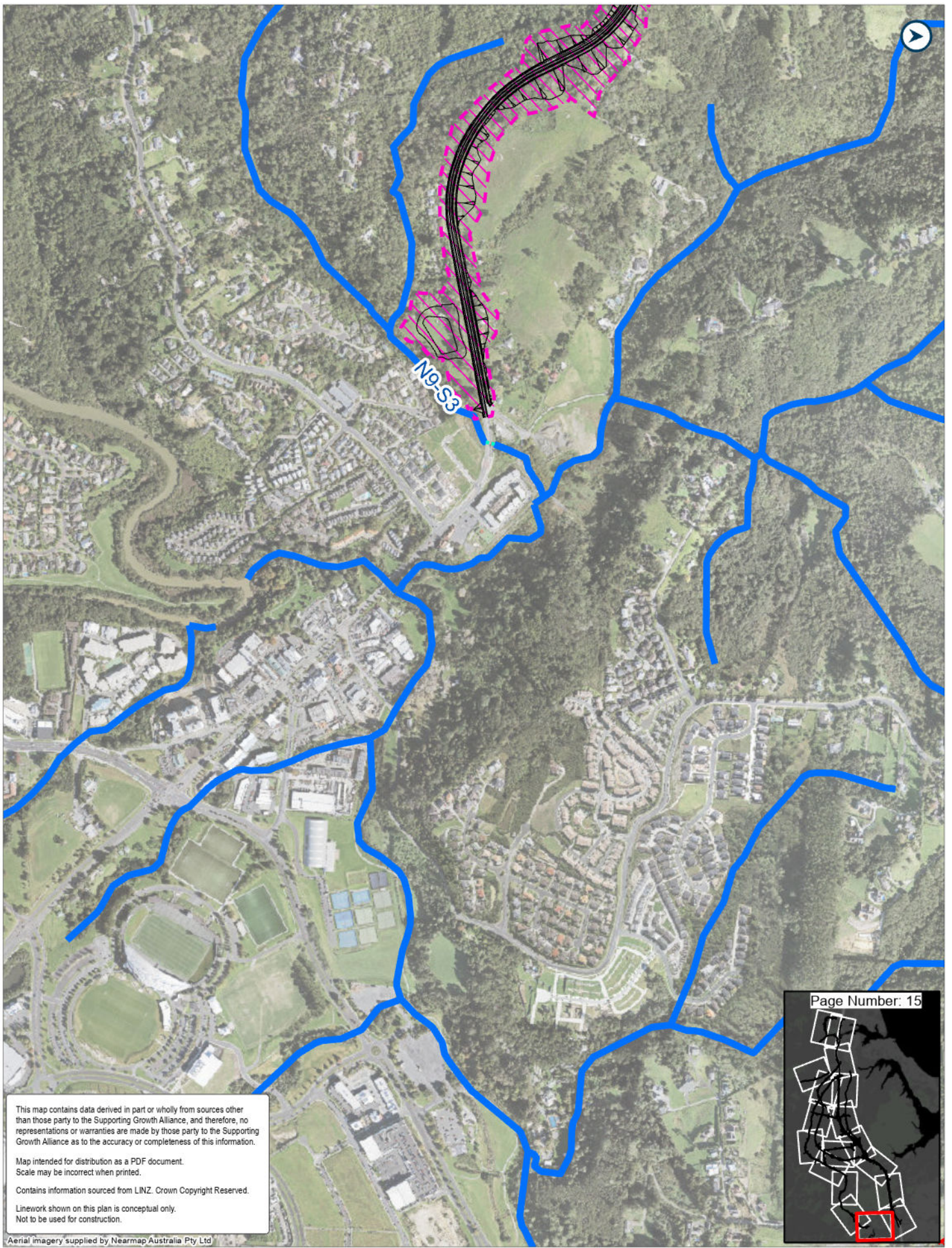


Page Number: 14

LEGEND

- Route Options
- █ Permanent
- ███ NOR 9





This map contains data derived in part or wholly from sources other than those party to the Supporting Growth Alliance, and therefore, no representations or warranties are made by those party to the Supporting Growth Alliance as to the accuracy or completeness of this information.

Map intended for distribution as a PDF document.
Scale may be incorrect when printed.


Contains information sourced from LINZ. Crown Copyright Reserved.

Linework shown on this plan is conceptual only.
Not to be used for construction.

Aerial imagery supplied by Nearmap Australia Pty Ltd



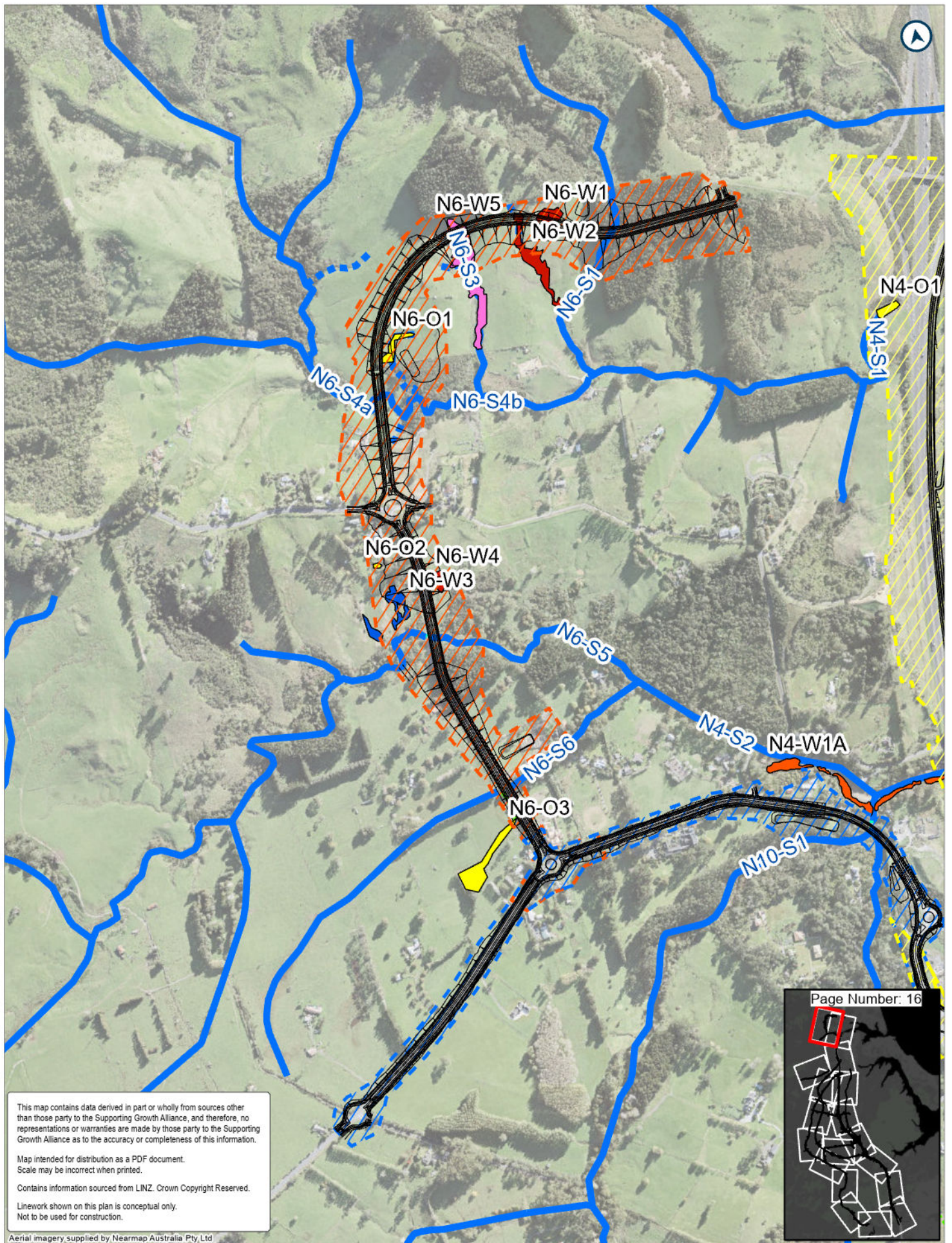
LEGEND

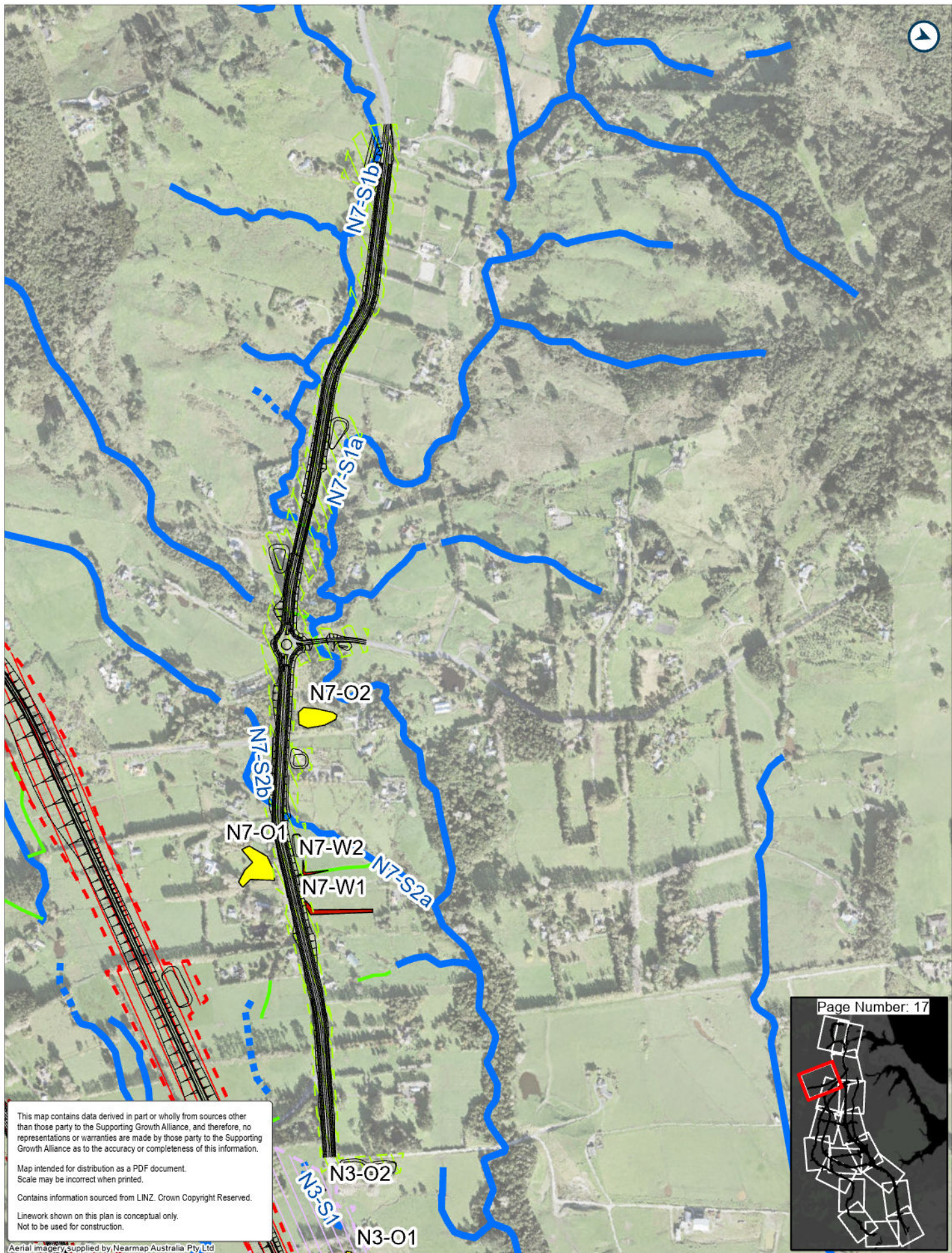
— Route Options
 NOR 1

 NOR 9
 Bridge

 Permanent







Path: P:\381081\0234\T0102_Dat011_Data Processing_530 Plus\600_Ecology\North_Sandy\SGA_Ecology_Template_Supply_20230421.aprx

This map contains data derived in part or wholly from sources other than those party to the Supporting Growth Alliance, and therefore, no representations or warranties are made by those party to the Supporting Growth Alliance as to the accuracy or completeness of this information.

Map intended for distribution as a PDF document.
Scale may be incorrect when printed.

Contains information sourced from LINZ. Crown Copyright Reserved.

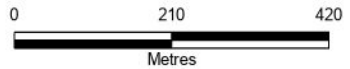
Linework shown on this plan is conceptual only.
Not to be used for construction.

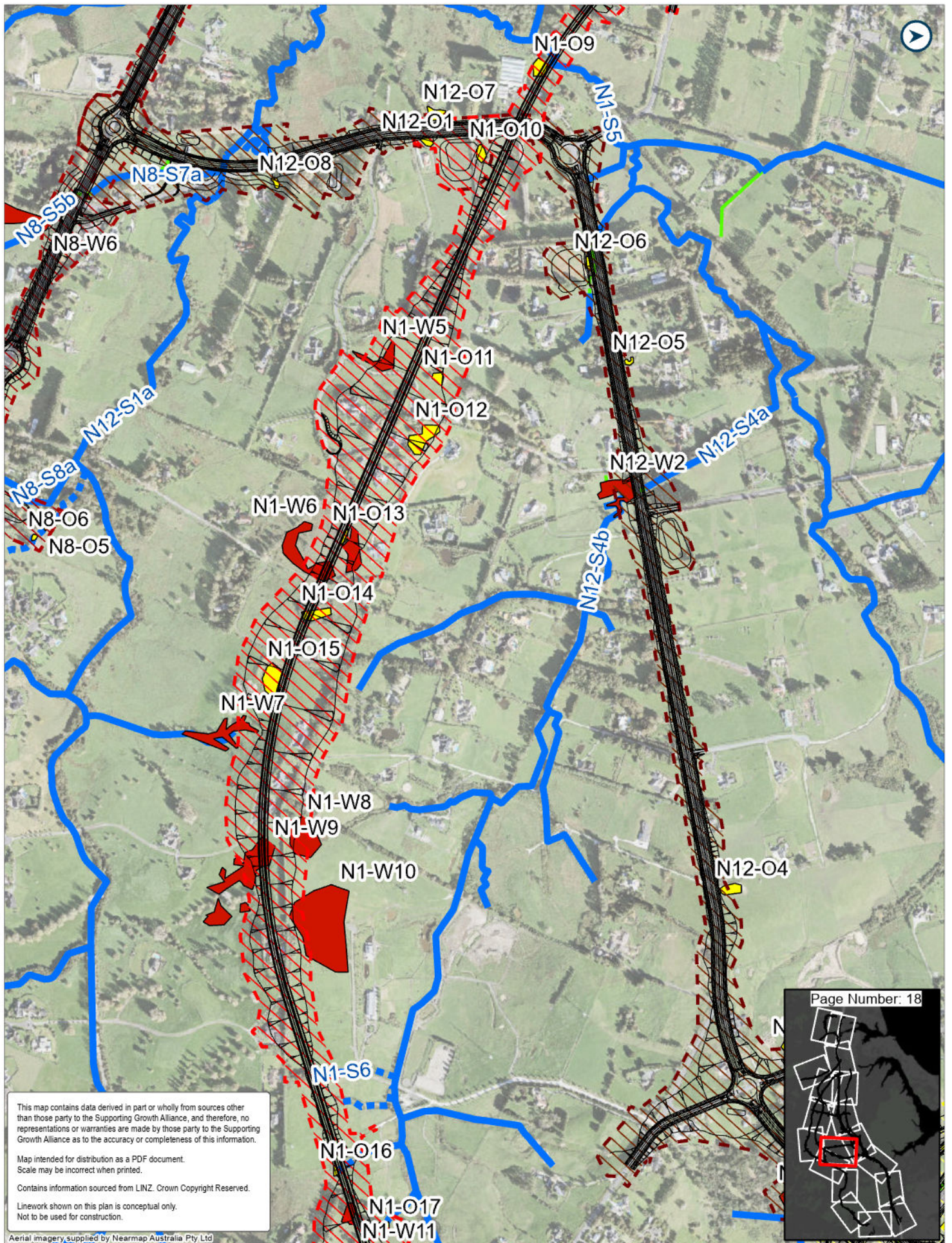


Page Number: 17

LEGEND

- Route Options
- NOR 1
- NOR 3
- NOR 7
- NOR 8
- OW - Open water
- EW - Exotic Wetland
- Artificial swale/drainage ditch
- Artificial/Piped/Culvert
- Intermittent
- Permanent





This map contains data derived in part or wholly from sources other than those party to the Supporting Growth Alliance, and therefore, no representations or warranties are made by those party to the Supporting Growth Alliance as to the accuracy or completeness of this information.

Map intended for distribution as a PDF document.
Scale may be incorrect when printed.

Contains information sourced from LINZ. Crown Copyright Reserved.

Linework shown on this plan is conceptual only.
Not to be used for construction.

Aerial imagery supplied by Nearmap Australia Pty Ltd



LEGEND

- Route Options
- ▨ NOR 1
- ▨ NOR 4
- ▨ NOR 8
- ▨ NOR 12
- ▨ OW - Open water
- EW - Exotic Wetland
- Artificial swale/drainage ditch
- Artificial/Piped/Culvert
- Intermittent
- Permanent

