

COPYRIGHT©
 THIS DRAWING AND PARTS THEREOF ARE COPYRIGHT TO LANDS AND SURVEY (AUCKLAND) LIMITED, AND SHALL NOT BE USED, REUSED, COPIED, REPRODUCED OR OTHERWISE UTILISED WITHOUT THE WRITTEN PERMISSION OF LANDS AND SURVEY (AUCKLAND) LIMITED OR ITS ASSOCIATED COMPANIES.

- NOTES:**
- COORDINATES ARE IN TERMS OF MOUNT EDEN CIRCUIT, GEODETIC 2000.
 ORIGIN: CE43 AE2M
 mN 788335.92
 mE 425775.36
 - LEVELS ARE IN TERMS OF AUCKLAND VERTICAL DATUM 1946.
 ORIGIN OF LEVELS:
 CE43 (GEOCODE AE2M)
 RL: 17.27m
 - CONTOUR INTERVAL
 - MAJOR 1.00m
 - MINOR 0.50m
 - FOR RESOURCE CONSENT PURPOSES ONLY.
 - AREAS AND MEASUREMENTS ARE SUBJECT TO SURVEY.

- LEGEND:**
- WW PRIMARY DISPOSAL AREA
 - WW RESERVE DISPOSAL AREA
 - BUILDING PLATFORM
 - EASEMENT
 - 12.0m SETBACK
 - OVERLAND FLOW PATH
 - GIS FLOOD PLAIN
 - 4.4m FLOOD LEVEL

CAD AND PRODUCTION BY:

Auckland | Whangarei | Christchurch | Wanaka
 Ph 0800 SURVEY
 www.landsandsurvey.co.nz

DRAWING TITLE:
PROPOSED SUBDIVISION OF LOT 1 DP 146882 SCHEME PLAN - SHEET 1/3

CLIENT NAME:
STRATFORD PROPERTIES LIMITED

CLIENT DETAILS:
 276&278 CLEVEDON-KAWAKAWA ROAD
 CLEVEDON

RESOURCE CONSENT

REV.	DESCRIPTION	BY	DATE
A	ORIGINAL ISSUE	RC	15/05/19
B	BDYS ADJUSTED AND NEW AREAS	RW	29/05/19
C	BDYS ADJUSTED AND NEW AREAS	RW	04/06/19
D	PRIMARY DISPOSAL AMENDED	RW	02/10/19
E	LOT 2 AREAS AMENDED	RW	09/10/19
SURVEYED		PG	19/12/18
DESIGNED			
DRAWN		RW	15/05/19
APPROVED		PL	15/05/19

SCALE (A3) 1:5000
 0 50 100 150 200 250m

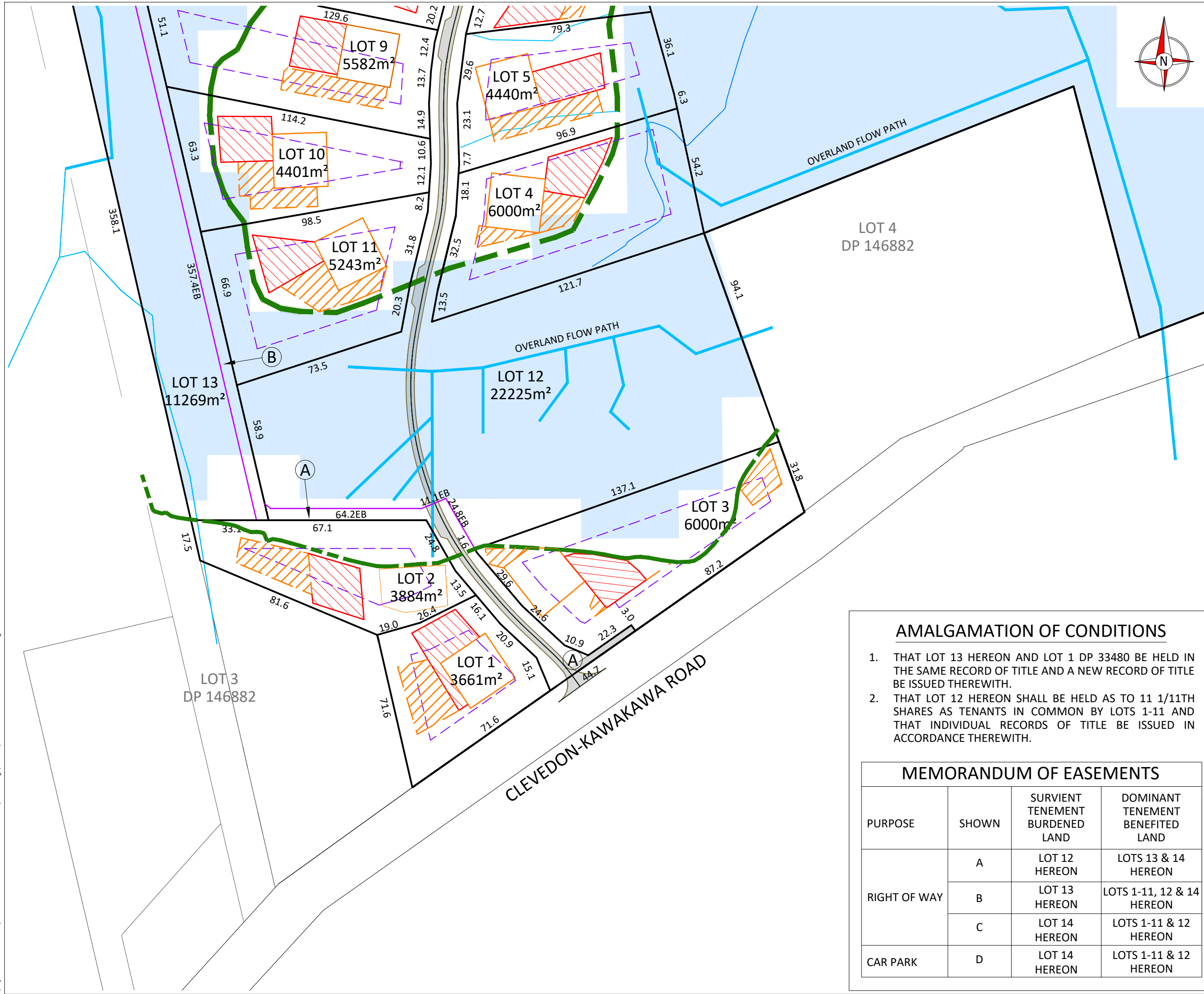
DRAWING REFERENCE
 117536-150 **REV E**

AMALGAMATION OF CONDITIONS

- THAT LOT 13 HEREON AND LOT 1 DP 33480 BE HELD IN THE SAME RECORD OF TITLE AND A NEW RECORD OF TITLE BE ISSUED THEREWITH.
- THAT LOT 12 HEREON SHALL BE HELD AS TO 11 1/11TH SHARES AS TENANTS IN COMMON BY LOTS 1-11 AND THAT INDIVIDUAL RECORDS OF TITLE BE ISSUED IN ACCORDANCE THEREWITH.

MEMORANDUM OF EASEMENTS

PURPOSE	SHOWN	SURVIENT TENEMENT BURDENED LAND	DOMINANT TENEMENT BENEFITED LAND
RIGHT OF WAY	A	LOT 12 HEREON	LOTS 13 & 14 HEREON
	B	LOT 13 HEREON	LOTS 1-11, 12 & 14 HEREON
	C	LOT 14 HEREON	LOTS 1-11 & 12 HEREON
CAR PARK	D	LOT 14 HEREON	LOTS 1-11 & 12 HEREON



COPYRIGHT©
 THIS DRAWING AND PARTS THEREOF ARE COPYRIGHT TO LANDS AND SURVEY (AUCKLAND) LIMITED, AND SHALL NOT BE USED, REUSED, COPIED, REPRODUCED OR OTHERWISE UTILISED WITHOUT THE WRITTEN PERMISSION OF LANDS AND SURVEY (AUCKLAND) LIMITED OR ITS ASSOCIATED COMPANIES.

- NOTES:**
- COORDINATES ARE IN TERMS OF MOUNT EDEN CIRCUIT, GEODETIC 2000.
 ORIGIN: CE43 AE2M
 mN 788335.92
 mE 425775.36
 - LEVELS ARE IN TERMS OF AUCKLAND VERTICAL DATUM 1946.
 ORIGIN OF LEVELS:
 CE43 (GEOCODE AE2M)
 RL: 17.27m
 - CONTOUR INTERVAL
 - MAJOR 1.00m
 - MINOR 0.50m
 - FOR RESOURCE CONSENT PURPOSES ONLY.
 - AREAS AND MEASUREMENTS ARE SUBJECT TO SURVEY.

- LEGEND:**
- WW PRIMARY DISPOSAL AREA (Red hatched)
 - WW RESERVE DISPOSAL AREA (Orange hatched)
 - BUILDING PLATFORM (Orange outline)
 - EASEMENT (Purple line)
 - 12.0m SETBACK (Dashed purple line)
 - OVERLAND FLOW PATH (Blue line)
 - GIS FLOOD PLAIN (Light blue area)
 - 4.4m FLOOD LEVEL (Green dashed line)

CAD AND PRODUCTION BY:

Auckland | Whangarei | Christchurch | Wanaka
 Ph 0800 SURVEY
 www.landsandsurvey.co.nz

DRAWING TITLE:
 PROPOSED SUBDIVISION OF
 LOT 1 DP 146882
 SCHEME PLAN - SHEET 2/3

CLIENT NAME:
 STRATFORD PROPERTIES
 LIMITED

CLIENT DETAILS:
 276&278 CLEVEDON-KAWAKAWA ROAD
 CLEVEDON

RESOURCE CONSENT

REV	DESCRIPTION	BY	DATE
A	ORIGINAL ISSUE	RC	15.05.19
B	BDrys ADJUSTED AND NEW AREAS	RW	29/05/19
C	BDRY AND AREAS AMENDED	RW	04/06/19
D	PRIMARY DISPOSAL AMENDED	RW	02/10/19
E	LOT 2 AREA AMENDED	RW	09/10/19
SURVEYED		PG	19/12/18
DESIGNED			
DRAWN		RW	15/05/19
APPROVED		TG	15/05/19

SCALE (A3) 1:1500
 SCALE BAR
 0 15 30 45 60 75m

DRAWING REFERENCE
 117536-151
REV
 E

AMALGAMATION OF CONDITIONS

- THAT LOT 13 HEREON AND LOT 1 DP 33480 BE HELD IN THE SAME RECORD OF TITLE AND A NEW RECORD OF TITLE BE ISSUED THEREWITH.
- THAT LOT 12 HEREON SHALL BE HELD AS TO 11 1/11TH SHARES AS TENANTS IN COMMON BY LOTS 1-11 AND THAT INDIVIDUAL RECORDS OF TITLE BE ISSUED IN ACCORDANCE THEREWITH.

MEMORANDUM OF EASEMENTS

PURPOSE	SHOWN	SURVIENT TENEMENT BURDENED LAND	DOMINANT TENEMENT BENEFITED LAND
RIGHT OF WAY	A	LOT 12 HEREON	LOTS 13 & 14 HEREON
	B	LOT 13 HEREON	LOTS 1-11, 12 & 14 HEREON
	C	LOT 14 HEREON	LOTS 1-11 & 12 HEREON
CAR PARK	D	LOT 14 HEREON	LOTS 1-11 & 12 HEREON



COPYRIGHT©

THIS DRAWING AND PARTS THEREOF ARE COPYRIGHT TO LANDS AND SURVEY (AUCKLAND) LIMITED, AND SHALL NOT BE USED, REUSED, COPIED, REPRODUCED OR OTHERWISE UTILISED WITHOUT THE WRITTEN PERMISSION OF LANDS AND SURVEY (AUCKLAND) LIMITED OR ITS ASSOCIATED COMPANIES.

NOTES:

1. COORDINATES ARE IN TERMS OF MOUNT EDEN CIRCUIT, GEODETIC 2000.
ORIGIN: CE43 AE2M
mN 788335.92
mE 425775.36
2. LEVELS ARE IN TERMS OF AUCKLAND VERTICAL DATUM 1946.
ORIGIN OF LEVELS:
CE43 (GEOCODE AE2M)
RL: 17.27m
3. CONTOUR INTERVAL
- MAJOR 1.00m
- MINOR 0.50m
4. FOR RESOURCE CONSENT PURPOSES ONLY.
5. AREAS AND MEASUREMENTS ARE SUBJECT TO SURVEY.

LEGEND:

- WW PRIMARY DISPOSAL AREA
- WW RESERVE DISPOSAL AREA
- BUILDING PLATFORM
- EASEMENT
- 12.0m SETBACK
- OVERLAND FLOW PATH
- GIS FLOOD PLAIN
- 4.4m FLOOD LEVEL

CAD AND PRODUCTION BY:

LANDS & SURVEY
SURVEYING | PLANNING | ENGINEERING
Auckland | Whangarei | Christchurch | Wanaka
Ph 0800 SURVEY
www.landsandsurvey.co.nz

DRAWING TITLE:

**PROPOSED SUBDIVISION OF
LOT 1 DP 146882
SCHEME PLAN - SHEET 3/3**

CLIENT NAME:

**STRATFORD PROPERTIES
LIMITED**

CLIENT DETAILS:

**276&278 CLEVEDON-KAWAKAWA ROAD
CLEVEDON**

RESOURCE CONSENT

REV.	DESCRIPTION	BY	DATE
A	ORIGINAL ISSUE	RC	15/05/19
B	BDYRS ADJUSTED AND NEW AREAS	RW	29/05/19
C	BDRY AND AREAS ADJUSTED	RW	04/06/19
D	PRIMARY DISPOSAL AMENDED	RW	02/10/19
E	LOT 2 AREAS AMENDED	RW	09/10/19
SURVEYED		PG	19/12/18
DESIGNED			
DRAWN		RW	15/05/19
APPROVED		PL	15/05/19

SCALE (A3) 1:1500
0 15 30 45 60 75m

DRAWING REFERENCE 117536-152 REV E

T:\Projects\117500 - 117599\117536 - 272 and 278 Clevedon-Kawakawa Rd\3.0 Drawings\3.1 CAD\117536-152-SCHEME PLAN - REV E.dwg

