

Proposed Auckland Regional Landfill, Wayby Valley

Executive Summary

This document is intended to provide a brief summary of the proposed Auckland Regional Landfill Resource Consent application and Private Plan Change 42.

The proposal is summarised below, however for full details of the Resource Consent application and Private Plan Change 42 please refer to the Auckland Council website:

- For the **Resource Consent** application please visit our website: <http://www.aucklandcouncil.govt.nz/notifiedresourceconsent>
- For the **Private Plan Change** please visit our website: <http://www.aucklandcouncil.govt.nz/planchanges>

Information about the proposal is also available on Waste Management New Zealand Ltd's ('WMNZ') website: <https://www.wastemanagement.co.nz/my-region/auckland/auckland-regional-landfill>

Location:

1232 State Highway 1, Wayby Valley, between Wellsford and Warkworth, adjoining Dome Valley. Refer to Figure 1.

Figure 1: Location plan



Description:

WMNZ is seeking to obtain Resource Consents (including land use consents, discharge and water permits) for the construction and operation of a new regional landfill facility within the Wayby Valley area (refer to Figure 2 below). The application is classified overall as a non-complying activity under the Auckland Unitary Plan (Operative in Part) (**'the Unitary Plan'**).

The landfill will be a Class 1 landfill, being one that accepts municipal solid waste, which includes residential and commercial waste, construction and demolition waste, some industrial wastes (that meet strict acceptance criteria) and contaminated soils. The landfill would not accept loads of hazardous waste.

In a separate process, WMNZ are also seeking a Private Plan Change to include a new precinct within the Unitary Plan (refer to Figure 3 below) that would specifically recognise the Auckland Regional Landfill and introduce new provisions specific to that precinct.

While both the Resource Consent application and Private Plan Change 42 deal with the same overall matter, being a regional landfill on the subject property, they are quite different and separate legal processes. The Resource Consent process assesses a specific and detailed proposal for a landfill. If granted the landfill could then begin to be established on the site.

In contrast, the Private Plan Change is a higher-level process that sets up a framework in the Unitary Plan to identify on the planning maps the site for a potential landfill. If approved, the Private Plan Change would not directly enable a landfill to be established (a further resource consent would be required as the proposed precinct is currently worded). The Private Plan Change would set up the plan provisions that a future new or altered landfill Resource Consent application would be assessed against.

It is important to note that the Resource Consent application currently being processed will be assessed against the current Unitary Plan provisions rather than those in Private Plan Change 42. The Private Plan Change provisions have no legal effect until they are made operative.

The Resource Consent application and Private Plan Change 42 are two separate legal processes. Therefore, if you wish to submit on both processes you must lodge **two separate submissions**.

Figure 2: Proposed Regional Landfill – Resource Consent application

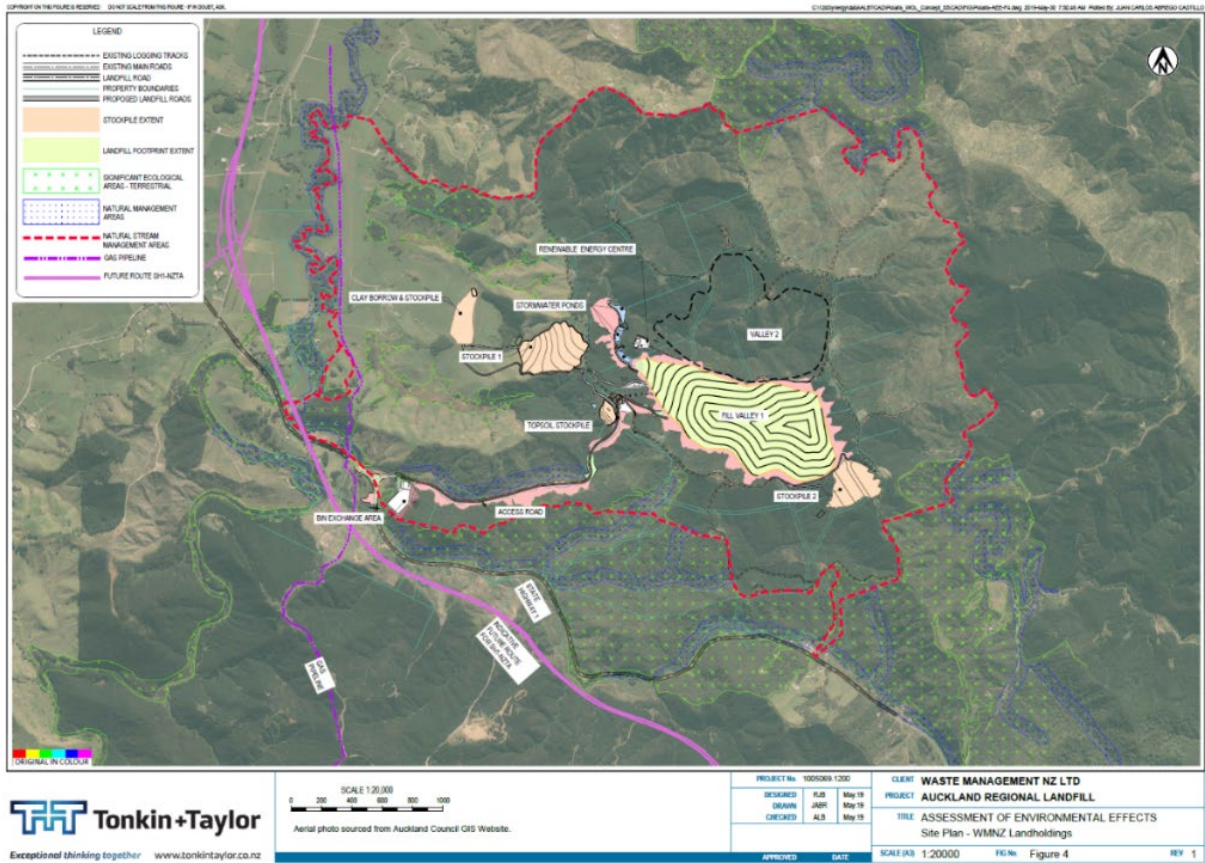


Figure 3: Proposed Regional Landfill Precinct – Private Plan Change

