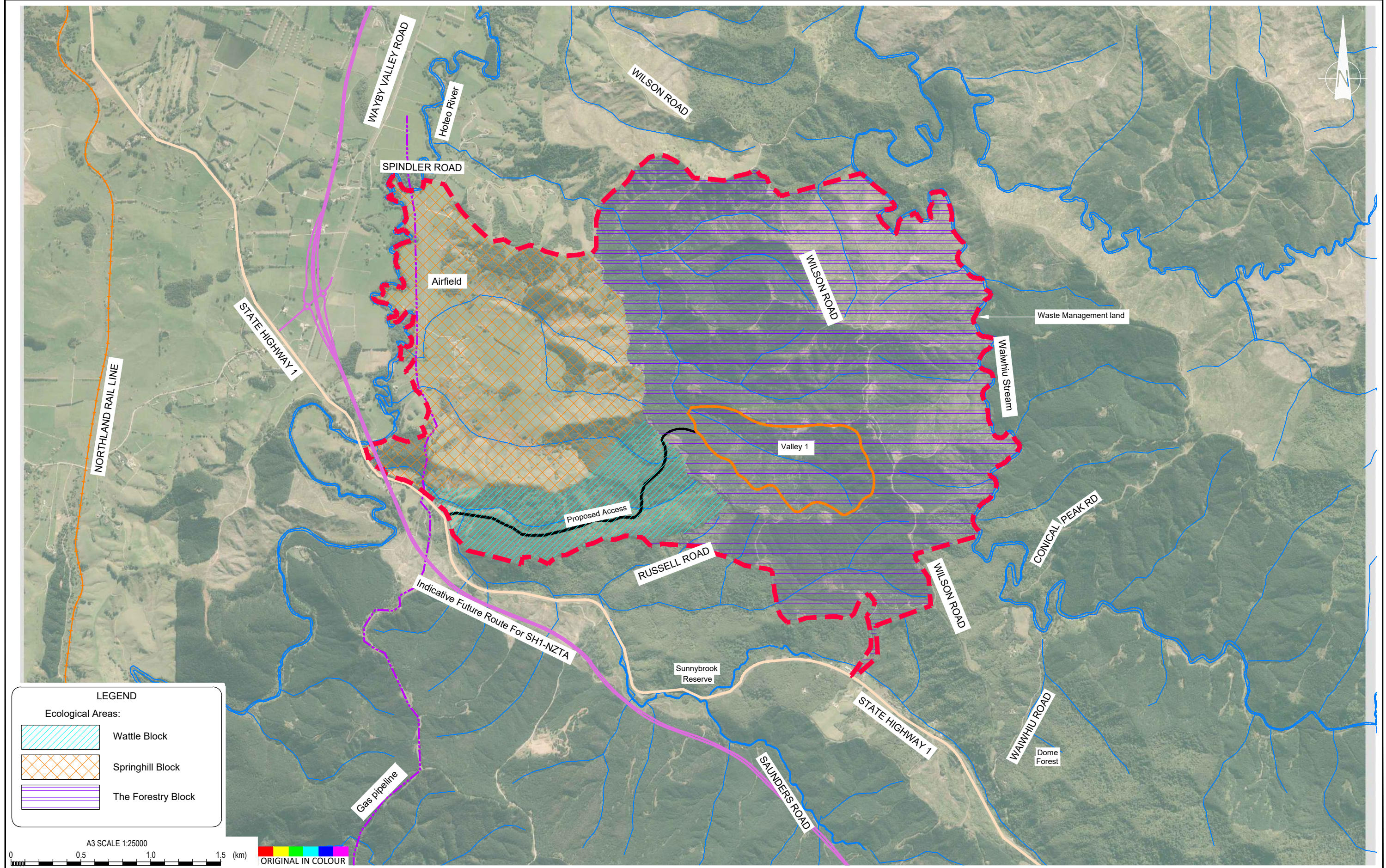


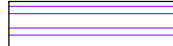


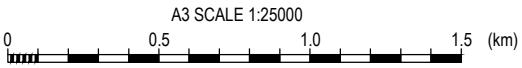
Appendix A: Figures



LEGEND

Ecological Areas:

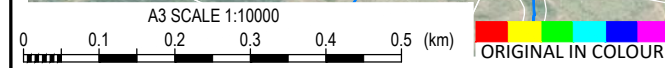
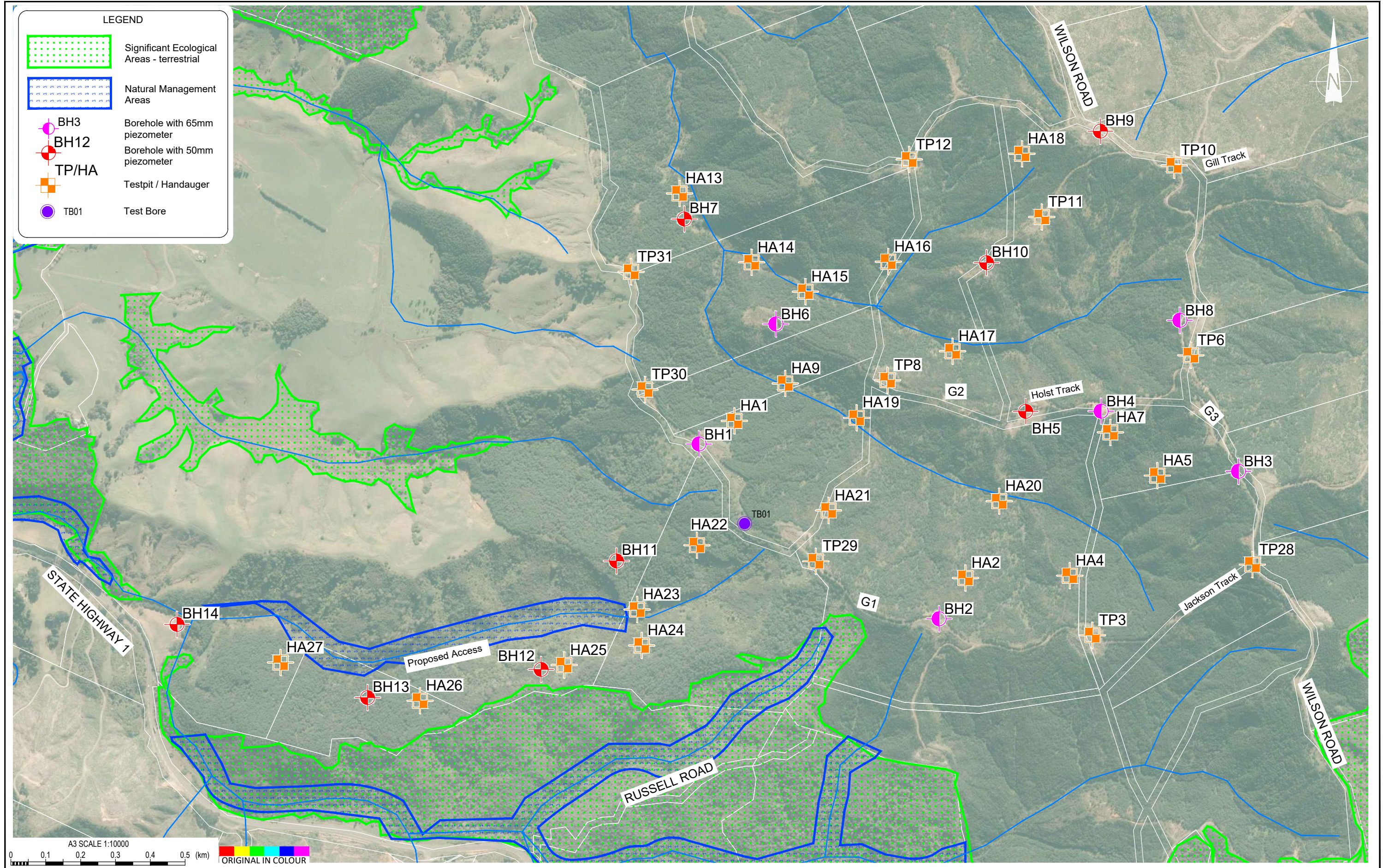
-  Wattle Block
-  Springhill Block
-  The Forestry Block



Aerial photo sourced from Auckland Council GIS Website.
 Property boundaries sourced from Land Information New Zealand data as at 16-Feb-2017 (Crown Copyright Reserved).

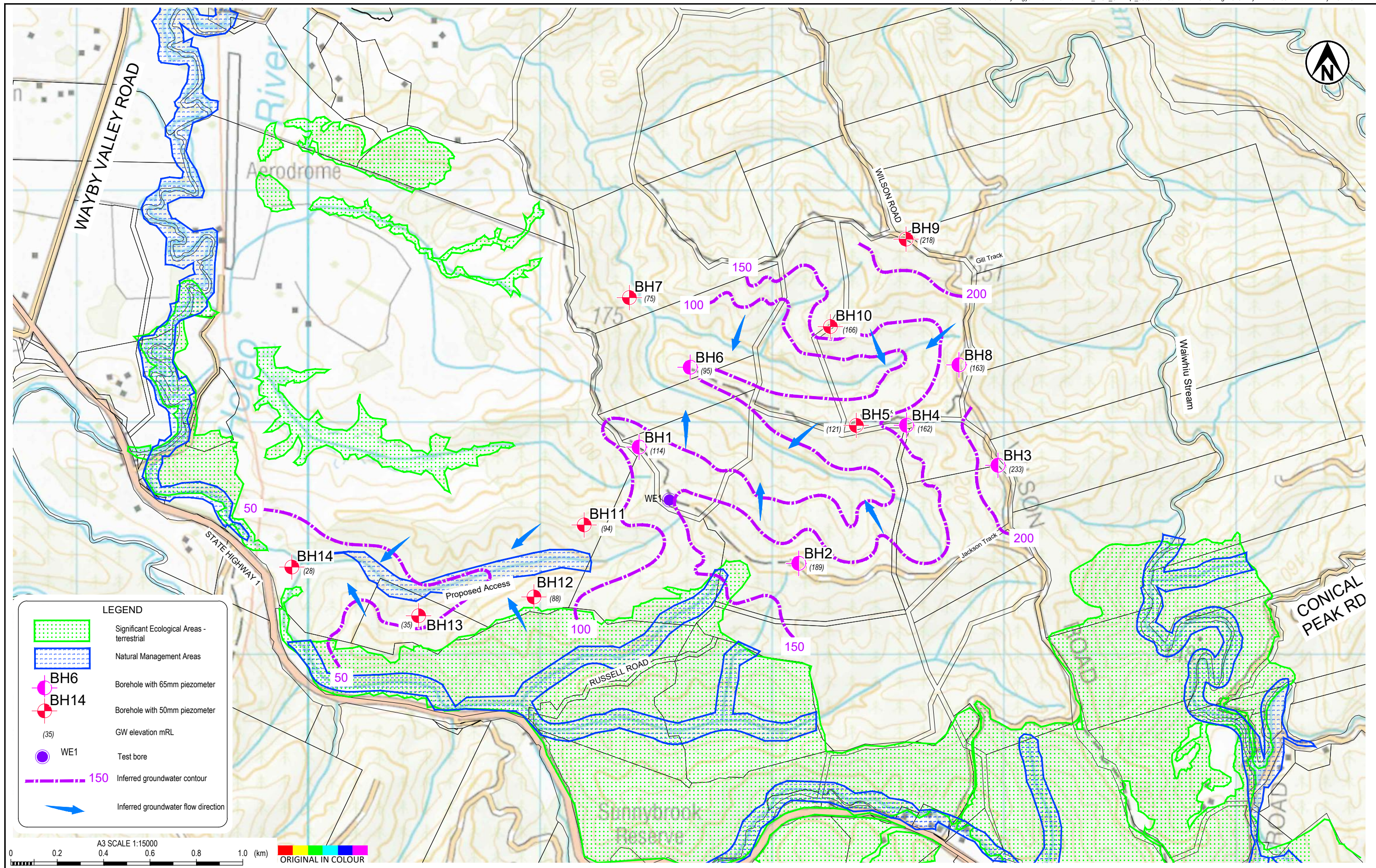
PROJECT No. 1005069.113		
DESIGNED	WC	Sep.18
DRAWN	TORY	Sep.18
CHECKED		
APPROVED		DATE

CLIENT	WASTE MANAGEMENT NZ LTD
PROJECT	AUCKLAND REGIONAL LANDFILL
TITLE	HYDROGEOLOGICAL ASSESSMENT SITE AREAS
SCALE (A3)	1:25,000
FIG No.	HG-F1
REV	1



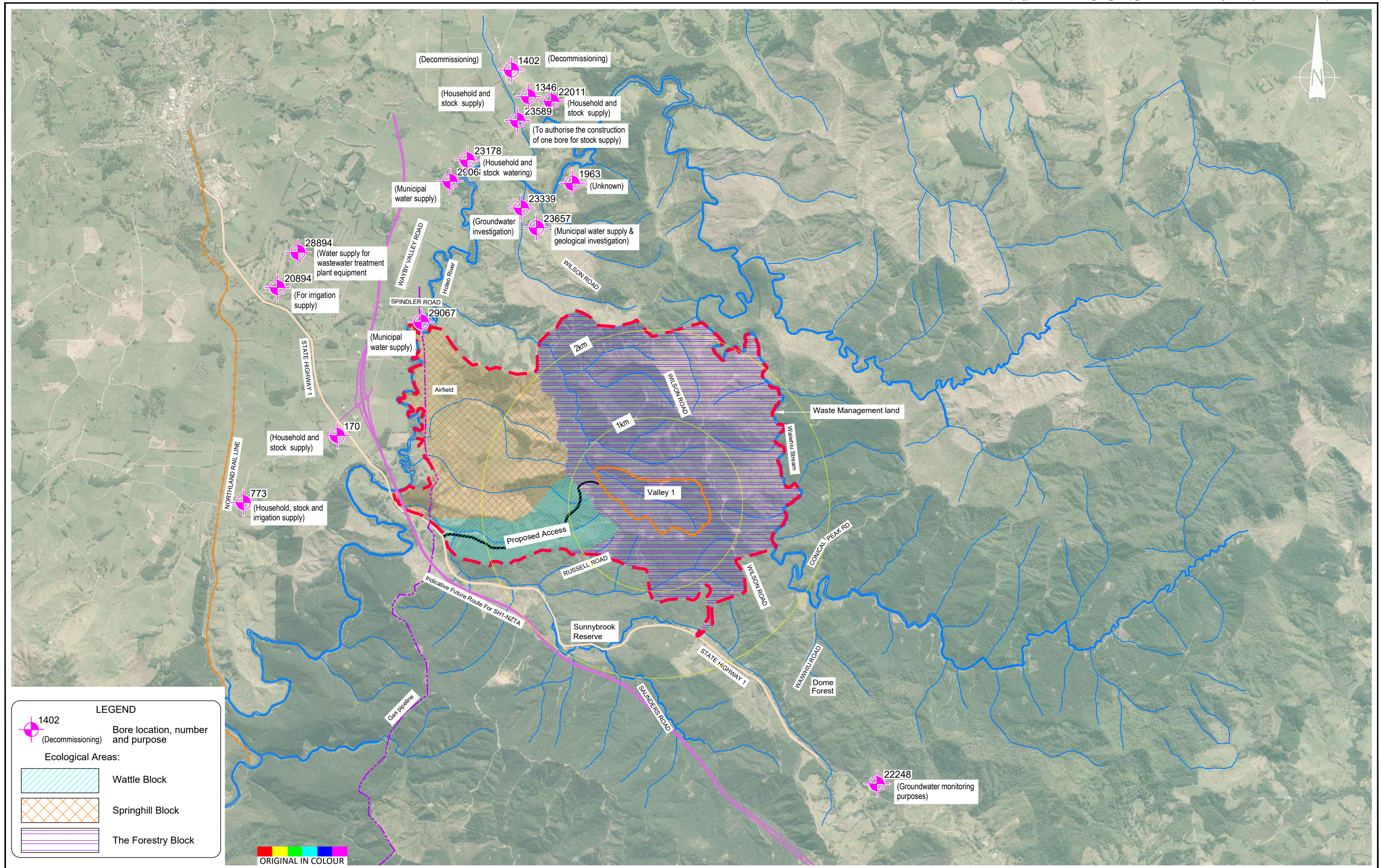
Aerial photo sourced from Auckland Council GIS Website.
 Property boundaries sourced from Land Information New Zealand data as at 16-Feb-2017
 (Crown Copyright Reserved).

PROJECT No. 1005069.113			CLIENT WASTE MANAGEMENT NZ LTD
DESIGNED	TC	Sep.18	PROJECT AUCKLAND REGIONAL LANDFILL
DRAWN	TORY	Sep.18	TITLE HYDROGEOLOGICAL ASSESSMENT SITE INVESTIGATION LOCATIONS
CHECKED			SCALE (A3) 1:10,000
APPROVED		DATE	FIG No. HG-F2
			REV 1



Topomap sourced from Land Information New Zealand data (Crown Copyright Reserved)
 Property boundaries sourced from Land Information New Zealand data as at 16-Feb-2017
 (Crown Copyright Reserved).

PROJECT No. 1005069.1130			CLIENT	WASTE MANAGEMENT NZ LTD
DESIGNED	LP	Apr.19	PROJECT	AUCKLAND REGIONAL LANDFILL
DRAWN	RBS	Apr.19	TITLE	HYDROGEOLOGICAL ASSESSMENT GROUNDWATER FLOW CONTOURS AND DIRECTION
CHECKED			SCALE (A3)	1:15,000
APPROVED		DATE	FIG No.	HG-F3
				REV 1



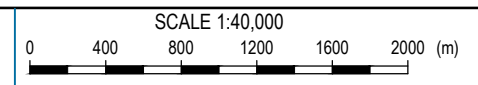
LEGEND

1402 (Decommissioning) Bore location, number and purpose

Ecological Areas:

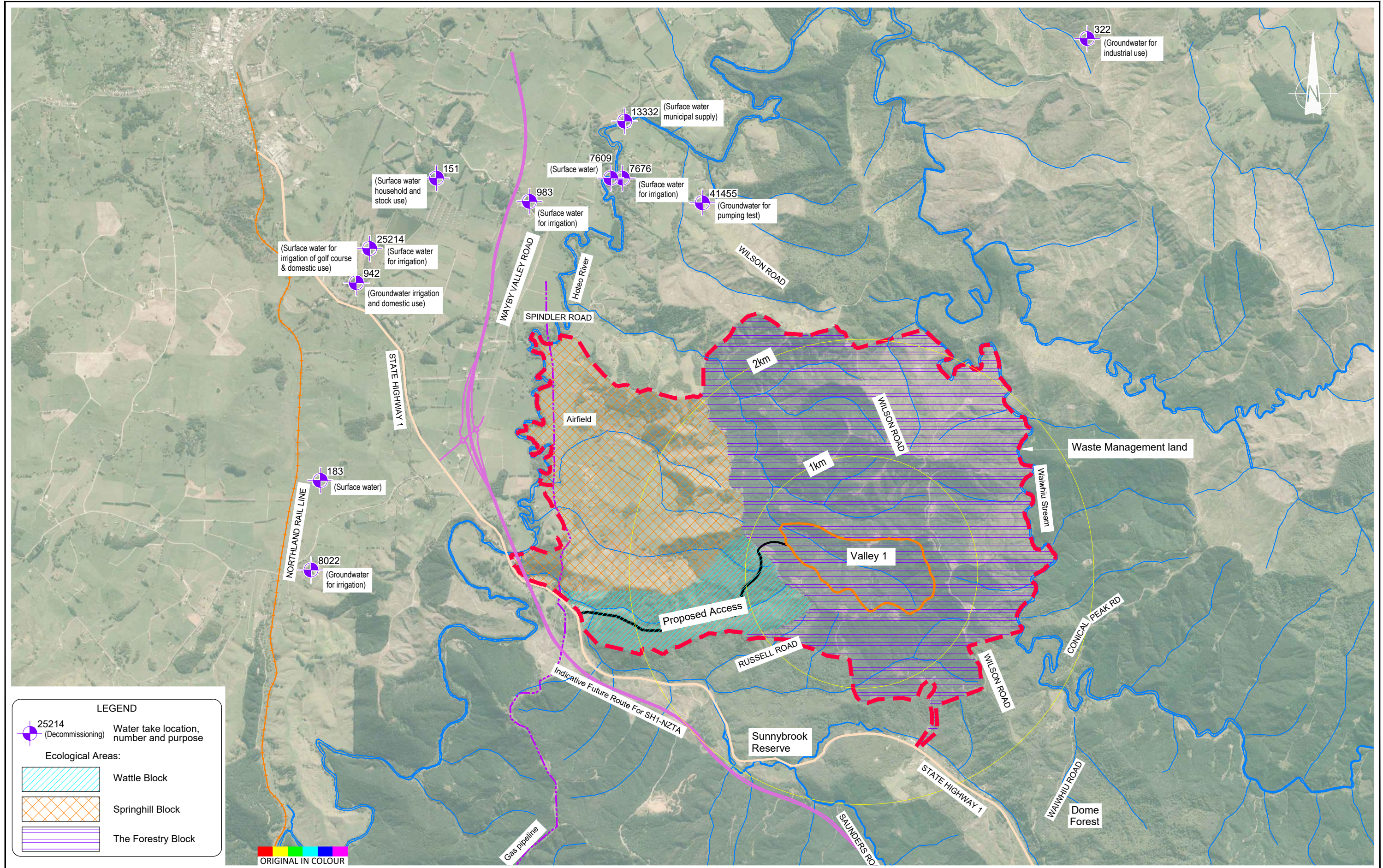
- Wattle Block
- Springhill Block
- The Forestry Block

ORIGINAL IN COLOUR



Aerial photo sourced from Auckland Council GIS Website.
 Property boundaries sourced from Land Information New Zealand data as at 16-Feb-2017 (Crown Copyright Reserved).

PROJECT No. 1005069.1130			CLIENT WASTE MANAGEMENT NZ LTD
DESIGNED LP	LP	Mar.19	PROJECT AUCKLAND REGIONAL LANDFILL
DRAWN RBS	RBS	Mar.19	TITLE HYDROGEOLOGICAL ASSESSMENT SURROUNDING BORE LOCATIONS
CHECKED			SCALE (A3) 1:40,000
APPROVED DATE			FIG No. HG-F4
			REV 1



LEGEND

25214 (Decommissioning) Water take location, number and purpose

Ecological Areas:

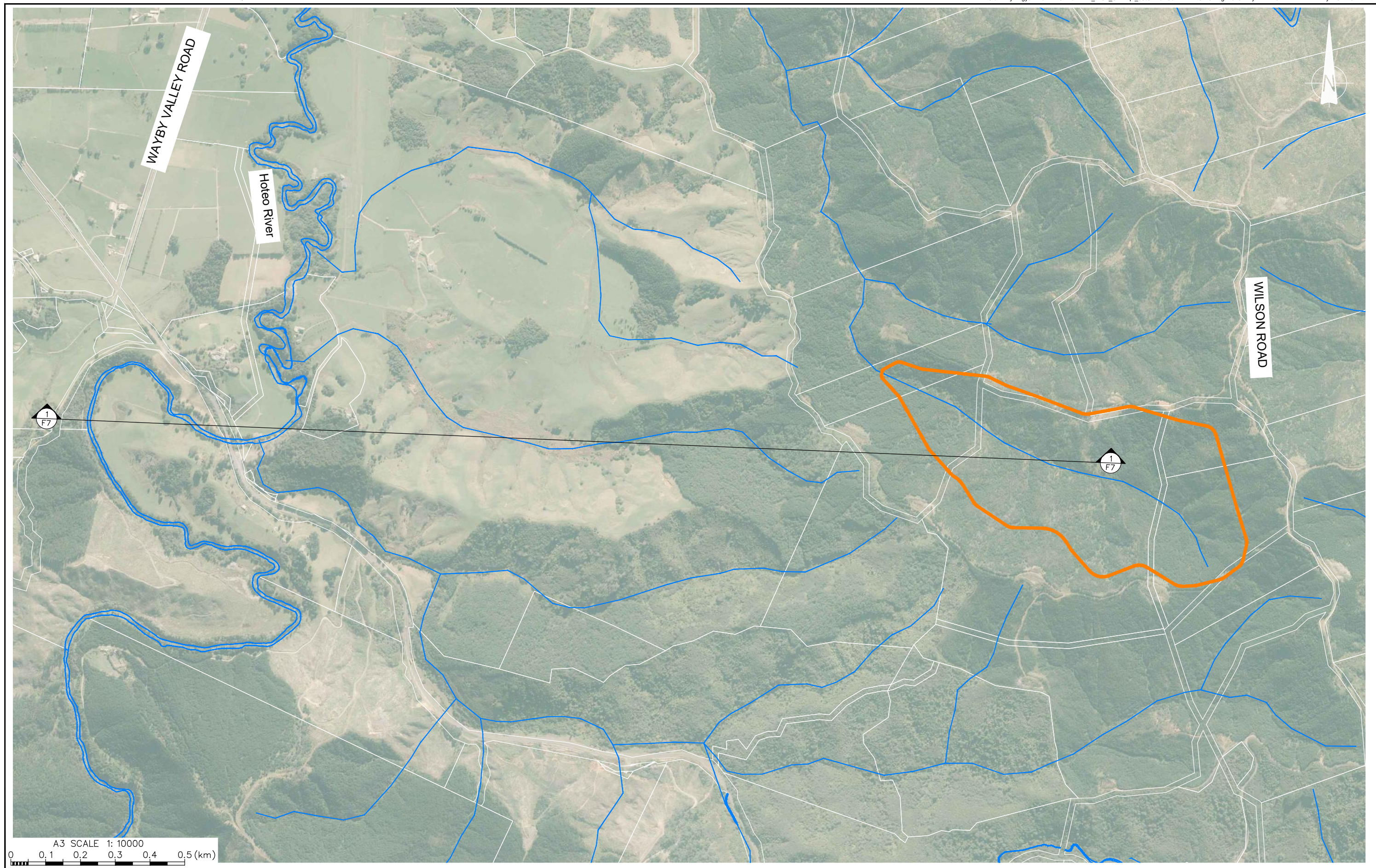
- Wattle Block
- Springhill Block
- The Forestry Block

ORIGINAL IN COLOUR



Aerial photo sourced from Auckland Council GIS Website.
 Property boundaries sourced from Land Information New Zealand data as at 16-Feb-2017 (Crown Copyright Reserved).

PROJECT No. 1005069.1130			CLIENT	WASTE MANAGEMENT NZ LTD	
DESIGNED	LP	Mar.19	PROJECT	AUCKLAND REGIONAL LANDFILL	
DRAWN	RBS	Mar.19	TITLE	HYDROGEOLOGICAL ASSESSMENT	
CHECKED				SURROUNDING GROUNDWATER & SURFACE WATER CONSENTS	
APPROVED _____ DATE _____			SCALE (A3)	1:30,000	FIG No. HG-F5
					REV 1



A3 SCALE 1: 10000
 0 0.1 0.2 0.3 0.4 0.5 (km)

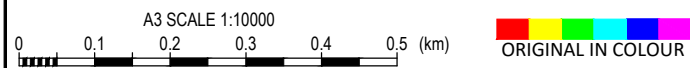
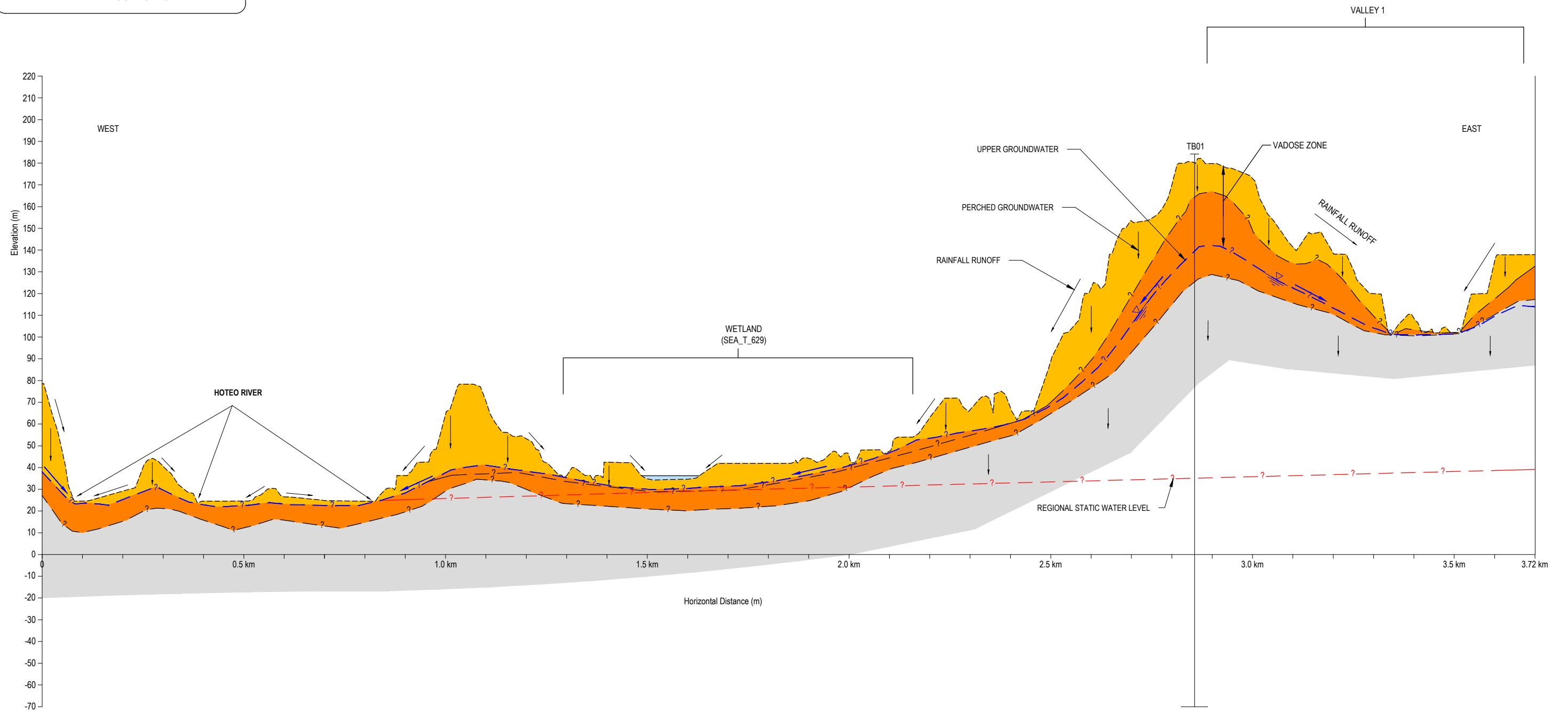
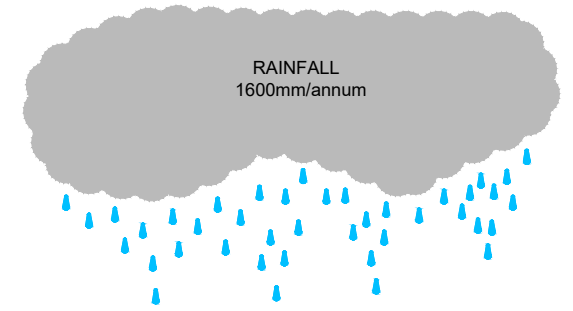
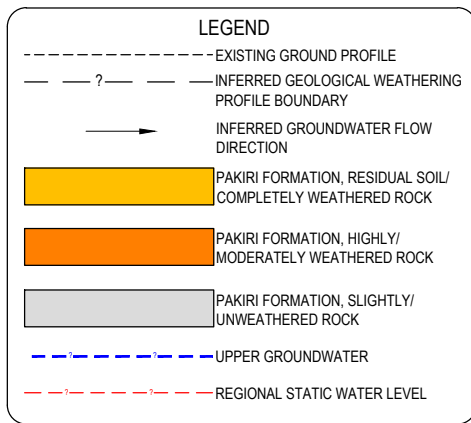


Exceptional thinking together www.tonkintaylor.co.nz

Aerial photo sourced from Auckland Council GIS Website.
 Property boundaries sourced from Land Information New Zealand data as at 16-Feb-2017
 (Crown Copyright Reserved).

PROJECT No. 1005069		
DESIGNED	LP	Sept.18
DRAWN	RBS	Sept.18
CHECKED		
APPROVED		DATE

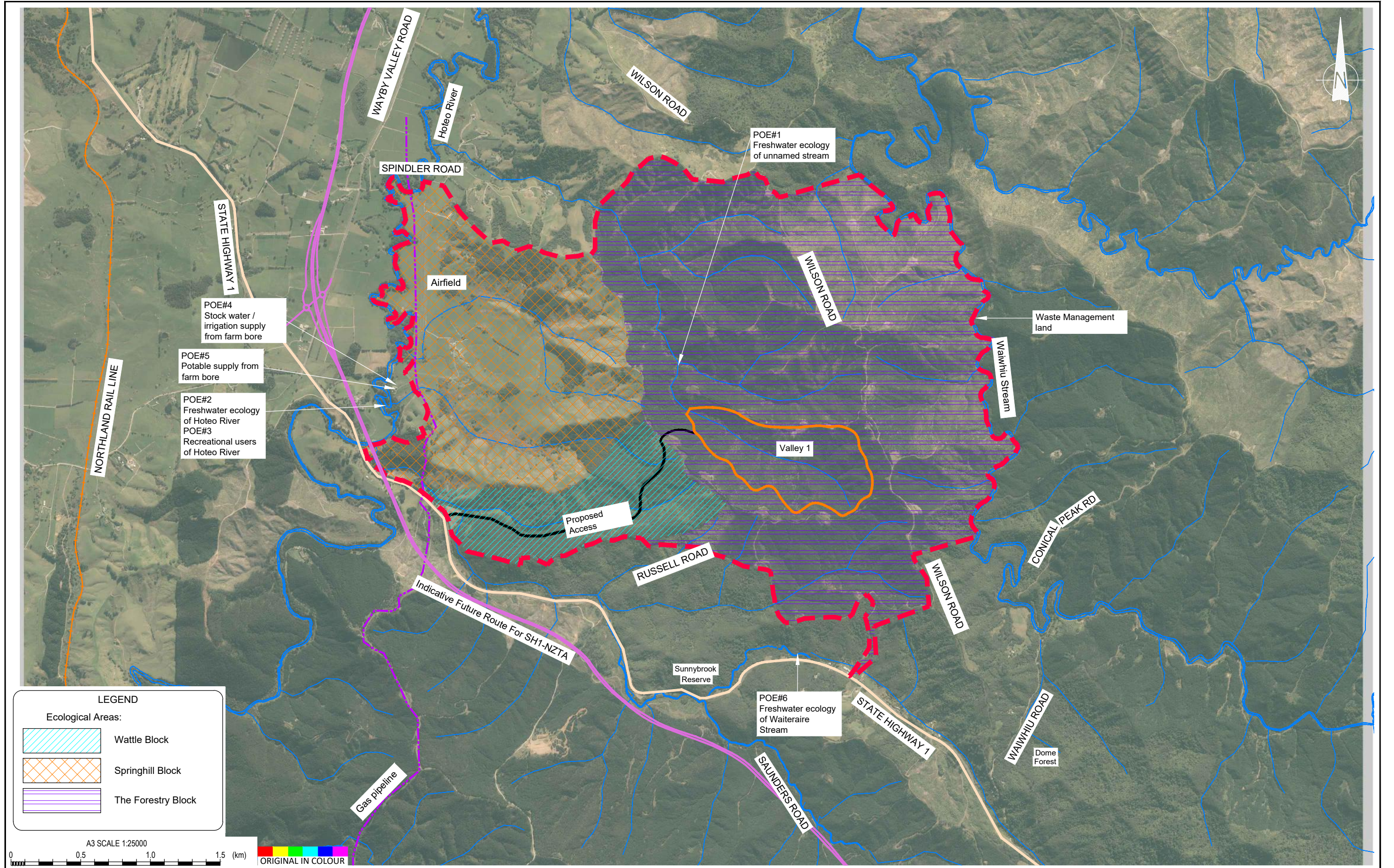
CLIENT	WASTE MANAGEMENT NZ LTD
PROJECT	AUCKLAND REGIONAL LANDFILL
TITLE	HYDROGEOLOGICAL ASSESSMENT SECTION LOCATION PLAN
SCALE (A3)	1:10,000
FIG No.	HG-F6
REV	1



- NOTES:**
1. Sketch not drawn to scale.
 2. Groundwater levels and geological profiles have been inferred.
 3. Recharge to groundwater is estimated to be 10% of rainfall (subject to further review of rainfall and groundwater levels).
 4. Groundwater levels and geological profiles have been inferred.
 5. Annual volumetric rainfall is approximately 1.6Mm³ for the valley 1 catchment.
 6. Recharge of groundwater in the upper Pakiri formation is estimated to be 10% of rainfall.
 7. Estimated groundwater recharge in valley1 catchment of 160,000^{m³}/yr.
 8. Perched groundwater within residual soil at the interface with highly/moderately weathered rock.

PROJECT No. 1005069		
DESIGNED	LP	Sept.18
DRAWN	TORY	Sept.18
CHECKED		
APPROVED		DATE

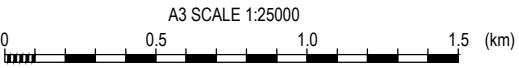
CLIENT	WASTE MANAGEMENT NZ LTD
PROJECT	AUCKLAND REGIONAL LANDFILL
TITLE	HYDROGEOLOGICAL ASSESSMENT CROSS SECTION
SCALE (A3)	1:10000 H
FIG No.	HG-F7
REV	1



LEGEND

Ecological Areas:

- Wattle Block
- Springhill Block
- The Forestry Block



Aerial photo sourced from Auckland Council GIS Website.
 Property boundaries sourced from Land Information New Zealand data as at 16-Feb-2017 (Crown Copyright Reserved).

PROJECT No. 1005069.1130		
DESIGNED	LP	Mar.19
DRAWN	RBS	Mar.19
CHECKED		
APPROVED		DATE

CLIENT	WASTE MANAGEMENT NZ LTD
PROJECT	AUCKLAND REGIONAL LANDFILL
TITLE	HYDROGEOLOGICAL ASSESSMENT POINT OF EXPOSURE LOCATIONS
SCALE (A3)	1:25,000
FIG No.	HG-F8
REV	1