

Te Tahua Pūtea Tau 2021-2031

Te Tahua Pūtea Whakarauora

The 10-year Budget 2021-2031

Long-term Plan

Our Recovery Budget

Te Poari ā-Rohe o Papakura

Papakura Local Board



Volume

3

Extract

**Local Board Information
and Agreements**



Mihi

**Noho mai rā Tāmaki Makaurau,
moana waipiata,
maunga kākārīki.**

**Mai i ngā wai kaukau o ngā tūpuna,
ki ngā puke kawē i ngā reo o te tini,
i puta ai te kī mōu.**

**Tū ana he maunga,
takoto ana he raorao,
heke ana he awaawa.**

**Ko ō wahapū te ataahua,
ō tāhuna te mahora,**

te taiao e whītiki nei i a koe he taonga tuku iho.

**Tiakina kia meinga tonu ai koe
ko ‘te tāone taioreore nui o te ao,
manakohia e te iwi pūmanawa’.**

**Tāmaki Mākaurau tirohia te pae tawhiti
he whakairinga tūmanako
mō ngā uri whakaheke ō āpōpō,
te toka herenga mō te hunga ka takahi ake
mā ō tomokanga,
te piriti e whakawhiti ai
tō iwi ki ngā huarahi o te ora.**

**Tāmaki Mākaurau e toro whakamua,
hīkina te mānuka.**

**Tērā te rangi me te whenua te tūtaki.
Maranga me te rā, he mahi māu me tīmata,
ka nunumi ana ki te pō,
whakatārewahia ō moemoeā ki ngā whetū.**

**Ko te oranga mutunga mōu
kei tua i te taumata moana.**

Tūwherahia ō ringa, kūmea mai ki tō uma.

**Tāmaki Makaurau
he tāone ūmanga kurupounamu koe;
tukua tō rongō kia rere i te ao.**

**Tāmaki Makaurau
who bestrides shimmering seas,
and verdant mountains.**

**From the bathing waters of our forebears,
and hills that echo with voices
that acclaim.**

**Your mountains stand lofty,
your valleys spread from them
and your streams run freely.**

**Your harbours are majestic,
your beaches widespread,
the environment that surrounds you is a legacy.
Take care of it so that you will always be known
as ‘the world-class city
where talent wants to be’.**

**Tāmaki Makaurau looking to the future,
repository of our hopes
for generations to come,
anchor stone for those who venture
through your gateway,
and the bridge that connects
your citizens to life.**

**Tāmaki Makaurau moving on,
accepting all challenges.**

**Where even heaven and earth might meet.
Rise with the sun as there is work to be done
and when evening comes,
allow your dreams to glide among the stars.**

**Perpetual health and growth
is beyond the horizon of cresting waves.**

Open your arms and pull them to your embrace.

**Tāmaki Makaurau, you are a city
where valued business and enterprise thrives;
let your good name traverse the world.**

How this 10-year Budget 2021-2031 is arranged

This document is an excerpt of Volume 3 of the Auckland Council 10-year Budget 2021-2031.

The complete annual budget has three separate volumes. To find out information on a particular area of the council’s work or services, you will need to look in the appropriate volume.

Public consultation ran during February and March 2021. This involved around 61 feedback events across the Auckland region. Both written and digital feedback were also encouraged and approximately 20,000 pieces of feedback were received. For a summary of the key decisions please visit aucklandcouncil.co.nz.

This plan was then adopted by the Governing Body on 29 June 2021.

Finding your way around the volumes:

Volume 1 **Volume 1: An overview of our 10-year Budget**

Section 1: An introduction to our 10-year Budget including a brief overview of the plans, strategies and budget that form the rest of this document.

Section 2: Our prospective financial statements for 2021-2031 and other key financial information.

Section 3: Report from the Auditor General.

Section 4: Supplementary Information including contacting the council, its structure and people. Glossary of terms and key word index.



Volume 2 **Volume 2: Our detailed budgets, strategies and policies**

Section 1: Our key strategies.

Section 2: Our Activities – summary information on the services Auckland Council delivers, performance measures and budget.

Section 3: Our key policies.

Section 4: Summary of the Tūpuna Maunga Authority Operational Plan 2021-2031.

Section 5: Our Council-controlled organisations.

Section 6: Supplementary information – Glossary of terms and Key word index.



Volume 3 **Volume 3: Local Board information and agreements**

Section 1: An overview of local boards, and their expenditure for 2021-2031.

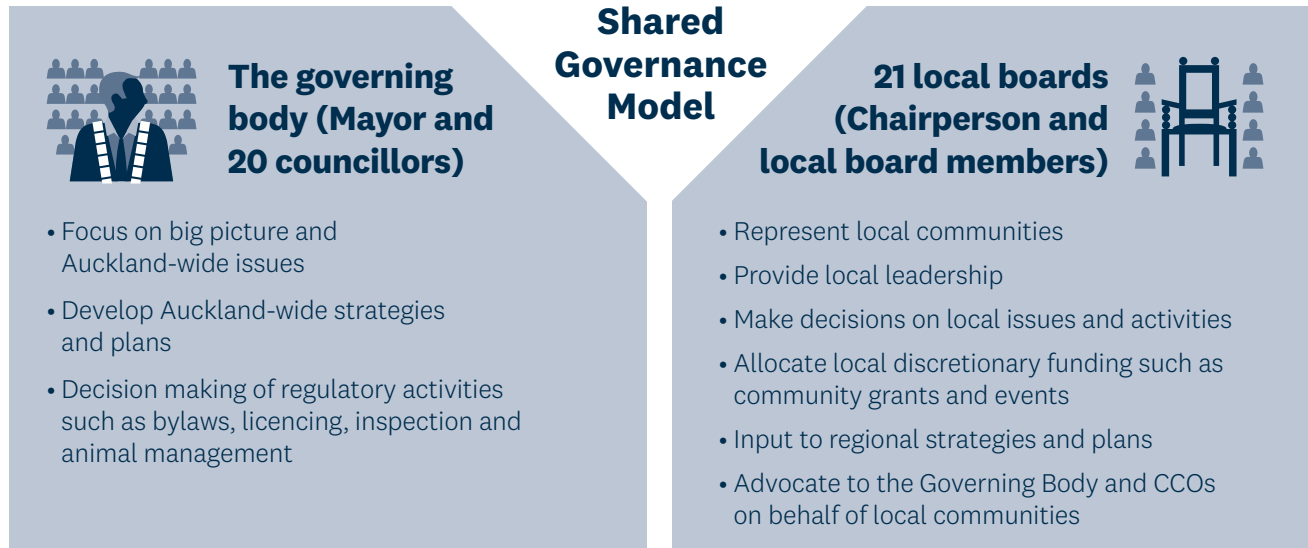
Section 2: Specific information for each of the 21 local boards, including the local board agreements.

Section 3: Supplementary information – Glossary of terms and Key word index.



Section One: Local board overview

1.1 Local board overview



Introduction

Auckland Council has a unique model of local government in New Zealand, comprising the Governing Body (made up of the mayor and 20 ward councillors) and 21 local boards. The Governing Body focuses on Auckland-wide issues while local boards are responsible for decision making on local issues, activities and services and providing input into regional strategies, policies and plans. Together, this is a shared governance model where decisions can be made both regionally and locally.

Local board decision-making comes from three sources:

1. **Legislation** – local boards are responsible for activities such as community engagement, preparing local board plans, agreeing and monitoring local board agreements and communicating local views to the Governing Body on regional strategies, policies, plans and bylaws.
2. **Allocation of decision-making for non-regulatory activities** – the Governing Body has allocated decision-making responsibility for certain non-regulatory activities to local boards. Local boards make decisions on, and have oversight of, a broad range of local activities such as local parks, libraries, events, recreational facilities and community activities. Please see Volume 2, Section 3.5 for the allocation of decision-making responsibilities for non-regulatory activities.
3. **Delegation of decision-making responsibilities** – the Governing Body may delegate responsibility for some regulatory activities to local boards and Auckland Transport may delegate some decision-making responsibilities to local boards. Please see Volume 2, Section 3.5 for the list of delegated responsibilities to local boards.

1.2 Developing local priorities

Local board plans are strategic documents that set the direction for local boards and also inform the 10-year budget (long-term plan). Reflecting community priorities and preferences, the plans are developed every three years to guide local board activity, funding and investment decisions. They also influence local board input into regional strategies and plans and provide a basis for developing local board agreements.

Every year, a local board agreement is developed between the Governing Body and each local board. It agrees the delivery and funding of local activities and intended levels of service for that area, for the year. The agreement takes into account local board plan priorities but must also reflect Governing Body decisions such as Auckland-wide priorities, budget constraints and trade-offs across all council activities.

Each local board also agrees annual work programmes in line with their local board agreement. These are operational and capital work programmes for activities in which they have decision-making responsibilities. They contain specific initiatives and projects in greater detail than appears in a local board agreement. Local board work programmes play a critical role in delivering on the needs of communities and are informed by local board plans.

Local board agreements for 2021/2022 have been agreed between each local board and the Governing Body and are set out in Section 2.

Diagram 1: The relationship between Auckland Council plans and agreements.



Local activities

Local boards have decision making responsibility for a range of activities, as set out in the following list.

- Local Community Services
- Local Planning and Development
- Local Environmental Management
- Local Governance.

Local board agreements outline for each activity area the key initiatives and funding for the 2021/2022 financial year.

1.3 Funding

Auckland Council has a shared governance model for making decisions on local activities. Under the Local Board Funding Policy, funding is allocated to local boards to deliver local services, through the following methods:

1. **Asset based services** – the Governing Body allocates funds to deliver local activities based on decisions about region-wide service levels. This includes allocation of funds for local asset based services, such as building a new swimming pool or library.
2. **Locally driven initiatives** – an allocation is based on a formula applied to each local board, with the exception of Aotea / Great Barrier and Waiheke Local Boards who agree funding requirements with the Governing Body on an annual basis.
3. **Governance services** – an allocation is based on the number of elected members and associated administrative costs for each local board.

The total planned expenditure for local activities across all 21 local boards over the 2021-2031 financial years are shown in following table below. The budgets for each local board are listed within the individual local board agreements in this volume.

Expenditure for all local board areas for 2021-2031 by local board

GROSS CAPITAL EXPENDITURE Financial year ending 30 June	Long-term Plan										
	2020/2021	2021/2022	2022/2023	2023/2024	2024/2025	2025/2026	2026/2027	2027/2028	2028/2029	2029/2030	2030/2031
Albert-Eden	2,113	4,844	4,187	4,195	6,959	6,063	3,531	3,577	2,447	2,544	2,643
Aotea / Great Barrier	351	254	632	216	777	745	857	861	666	674	682
Devonport-Takapuna	4,923	5,650	4,731	4,873	5,087	6,709	6,442	6,489	6,315	6,426	6,541
Franklin	5,782	8,617	9,875	10,014	4,987	4,107	4,493	4,569	3,727	3,872	4,021
Henderson-Massey	7,303	13,335	11,294	14,094	8,516	5,478	5,969	6,049	10,009	15,296	5,358
Hibiscus and Bays	4,565	7,670	12,723	10,734	7,449	8,628	8,549	8,618	7,959	8,125	8,297
Howick	1,529	5,616	5,691	5,866	22,777	23,654	29,800	39,940	5,178	7,106	5,395
Kaipātiki	6,557	9,662	7,359	9,962	15,083	11,404	16,638	10,648	10,318	10,578	10,845
Māngere-Ōtāhuhu	2,864	5,329	4,618	5,602	6,802	8,768	5,872	5,922	4,899	5,012	5,127
Manurewa	1,710	4,716	2,093	9,497	3,774	4,633	5,371	5,414	4,057	4,178	4,246
Maungakiekie-Tāmaki	2,764	6,738	6,615	6,564	5,148	6,661	5,814	5,867	4,734	4,846	4,962
Ōrākei	2,116	5,177	6,479	3,860	9,080	6,860	6,555	6,601	5,747	5,851	5,959
Ōtara-Papatoetoe	7,818	5,999	6,304	7,165	6,408	7,654	7,402	7,461	6,611	6,754	6,902
Papakura	3,870	5,503	3,658	5,586	4,406	2,438	2,812	2,848	2,461	2,532	2,606
Puketāpapa	2,407	1,101	1,635	2,605	2,252	1,934	2,607	2,633	2,073	2,125	2,178
Rodney	4,346	9,437	11,659	10,155	8,946	10,720	9,525	9,613	9,524	9,720	9,923
Upper Harbour	1,179	10,683	6,044	2,953	3,536	1,478	2,013	2,051	1,313	2,043	1,452
Waiheke	1,142	2,350	2,696	2,826	2,330	2,664	2,803	2,829	2,447	2,505	2,566
Waitākere Ranges	1,112	2,905	2,961	2,114	3,899	2,833	2,822	2,842	2,535	3,235	2,631
Waitematā	5,990	12,289	6,366	6,052	5,362	6,600	6,550	6,615	6,029	6,283	6,301
Whau	2,747	10,326	19,314	18,576	3,905	5,685	24,316	17,469	28,415	37,449	9,848
	73,188	138,201	136,934	143,509	137,483	135,716	160,741	158,916	127,464	147,154	108,483

Expenditure for all local board areas for 2021-2031 by local board

GROSS OPERATING \$000 Financial year ending 30 June	Annual Plan Long-term Plan										
	2020/2021	2021/2022	2022/2023	2023/2024	2024/2025	2025/2026	2026/2027	2027/2028	2028/2029	2029/2030	2030/2031
Albert-Eden	22,479	17,394	17,782	18,110	18,503	18,996	19,462	19,965	20,578	21,129	21,665
Aotea / Great Barrier	3,479	2,832	2,912	2,954	3,014	3,107	3,174	3,246	3,350	3,422	3,499
Devonport-Takapuna	16,723	15,640	15,959	16,238	16,532	16,928	17,344	17,773	18,258	18,700	19,176
Franklin	15,159	15,667	16,091	16,449	16,851	17,373	17,901	18,460	19,101	19,684	20,299
Henderson-Massey	28,359	29,524	30,258	30,912	31,632	32,501	33,407	34,355	35,469	36,557	37,708
Hibiscus and Bays	20,718	20,600	21,090	21,531	21,928	22,568	23,223	23,918	24,711	25,462	26,251
Howick	27,465	28,801	29,046	29,643	30,237	31,026	31,938	32,882	33,957	34,859	35,936
Kaipātiki	19,201	19,237	19,742	20,169	20,657	21,302	22,001	22,740	23,567	24,355	25,198
Māngere-Ōtāhuhu	19,291	17,305	17,665	17,988	18,357	18,804	19,276	19,771	20,330	20,901	21,504
Manurewa	16,246	15,910	16,257	16,974	17,331	17,771	18,232	18,715	19,307	19,866	20,457
Maungakiekie-Tāmaki	14,840	15,157	15,548	15,895	16,281	16,765	17,255	17,769	18,392	18,970	19,563
Ōrākei	13,452	14,092	14,462	14,777	15,129	15,576	16,031	16,511	17,068	17,597	18,156
Ōtara-Papatoetoe	18,739	19,130	19,539	19,899	20,320	20,848	21,398	21,966	22,682	23,367	24,093
Papakura	11,949	11,759	11,997	12,213	12,455	12,773	13,074	13,392	13,821	14,202	14,630
Puketāpapa	10,796	10,289	10,544	10,752	10,980	11,281	11,556	11,847	12,212	12,540	12,884
Rodney	19,042	17,681	18,163	18,602	19,079	19,718	20,367	21,065	21,849	22,584	23,339
Upper Harbour	13,594	13,583	13,881	14,189	14,518	14,925	15,317	15,725	16,170	16,580	17,012
Waiheke	7,294	7,662	7,846	8,007	8,187	8,419	8,645	8,883	9,158	9,407	9,670
Waitākere Ranges	9,485	9,497	9,822	9,893	10,087	10,350	10,591	10,945	11,290	11,600	11,927
Waitematā	29,157	29,155	29,826	30,482	31,171	31,978	32,800	33,672	34,697	35,699	36,752
Whau	15,084	15,310	15,749	16,197	16,904	17,602	18,388	19,231	20,113	20,973	21,873
	352,552	346,225	354,179	361,874	370,153	380,611	391,380	402,831	416,080	428,454	441,592

Budgets include inflation, interest and depreciation, and exclude corporate overheads.

Te Poari ā-Rohe
o Papakura

2.14 Papakura Local Board



2.14 Papakura Local Board

He kōrero mai i te Heamana

Message from the Chair

It is my pleasure to present the key priorities and advocacy areas included in our Papakura Local Board Agreement 2021/2022.

The local board will continue to progress Papakura's future as a vibrant metropolitan centre, as identified in the Unitary Plan, and the Papakura Local Board Metropolitan Centre Plan through the Commercial Project Group. The local board is investing in the Takanini Business Association to position it to establish its own Business Improvement District.

Your feedback highlighted the importance of the environment. The local board will continue to work closely with neighbouring local boards to deliver the Papakura Stream restoration and Manukau Harbour Forum projects.

You have told us that you support the local board continuing to provide free community events. For example, StreetFest, Carols in the Park, Movies in the Park, and a variety concert.

Consultation on the local board agreement told us that there is continued concern about the demand for parking at the Papakura train station. We will continue to advocate for a transport hub at the Papakura Train station which we envisage including park 'n' ride, bus metro and other transport solutions to ease pressure on on-street parking.

The local board will continue to advocate for East-West links, both roads and shared pedestrian/cycle pathways, from State Highway 1 to Mill Road and including neighbourhood loops.

Thank you for your continued support, we look forward to working with you throughout the year on our key priorities.



Brent Catchpole

Chair, Papakura Local Board

Te Rohe ā-Poari o Papakura

Papakura Local Board area





Papakura has a population of

57,636

26.8%

Identify as Māori. 11 mana whenua iwi/hapū have an interest in Papakura.

49.1%

European

23.4%

Asian

16.9%

Pacific Island

A relatively young population with **23.6%** of the population under 15 years old.

The median age is **32 years**



Papakura had a total of

17,094

occupied private dwellings. This represents much faster growth compared to that of wider Auckland (5.7 per cent increase).

We are home to



1 community hub and library



1 recreation centre



9 community halls



Data sources: Statistics New Zealand Population Estimates (2013) and Population Projections (2013-base), Auckland Plan 2050: Development Strategy - Monitoring Report 2019.

Local Board Plan outcomes

The Papakura Local Board Plan 2020 sets out the aspirations the local board has for the area. The outcomes in the Papakura Local Board Plan are:

Whakaotinga tahi: He ohaoha ā-rohe ngangahau, taurikura hoki

Outcome 1: A vibrant and prosperous local economy

Our part of the world thrives, with successful local businesses creating jobs for local people. Our commercial centres are great places to work, shop, relax and enjoy the company of family and friends.

Whakaotinga rua: He hapori e whakahaumakotia ana e tōna kanorau, e rongo ana ngā tāngata i te honohono, he oi, he hauora te āhuetanga o te noho

Outcome 2: A community enriched by its diversity, where people feel connected and lead active, healthy lives

We have great parks and places to play and do the things we enjoy. We come together at lively events and activities that include people socially and draw on the strengths of our different cultures.

Whakaotinga toru: He wāhi pai te honohono, he ngāwari te neke haere

Outcome 3: A well-connected area where it's easy to move around

Our roads are free from congestion, public transport is convenient and reliable, walkways and cycleways are linked together and safe.

Whakaotinga whā: He taiao, he tukunga iho e kaingākauria ana

Outcome 4: A treasured environment and heritage

We value our natural environment and heritage, protecting and nourishing them for future generations.

Whakaotinga rima: He rangapū ki te Māori e hanga ana i te Papakura i reira te tuakiri, te ahurea me ngā tūmanako Māori e kauawhitia ana

Outcome 5: A partnership with Māori that creates a Papakura where Māori identity, culture and aspirations are embraced

We recognise the importance of partnering with Māori to create enduring relationships, a thriving Māori identity, and outcomes that benefit Māori and all Papakura residents.

The local board agreement outlined in this document reflects how we plan to support these outcomes through agreed activities in the 2021/2022 financial year. In addition, each local board carries out responsibilities delegated by the Governing Body in accordance with the delegated power, and with the general priorities and preferences in the local board plan.

Working with Māori

Delivering on Auckland Council's commitment to Māori at a local level is a priority for local boards. The council is committed to meeting its responsibilities under Te Tiriti o Waitangi / the Treaty of Waitangi and its broader statutory obligations to Māori.

To meet this commitment the Papakura Local Board Plan 2020 recognises the importance of partnering with Māori to create enduring relationships, a thriving Māori identity, and outcomes that benefit Māori and all Papakura residents. The board has the following objectives:

- build strong governance-level partnerships between Papakura Local Board and mana whenua
- celebrate Papakura's Māori identity and culture
- support Māori aspirations for kaitiakitanga over our natural environment for the benefit of current and future generations
- support Māori to deliver community and economic benefits to the people of Papakura.

Papakura Local Board Agreement 2021/2022

Priorities by activity area

Auckland Council's 2021/2022 funding priorities for local activities which contribute to key community outcomes in the Papakura Local Board area are set out below under each local activity.

Local Community Services

Local community services is a broad activity area, which includes:

- supporting local arts, culture, events and sport and recreation
- providing grants and partnering with local organisations to deliver community services
- maintaining facilities, including local parks, libraries and halls.

Our annual budget to deliver these activities includes operating costs of \$10.4 million and capital investment of \$5.5 million.

The key initiatives we have planned for 2021/2022 include:

- continuing to support community-led initiatives at Smiths Ave Reserve through the funding of coordinators and activations
- community activations and placemaking across the board area
- community arts programme, including a matariki event
- Te Koiwi Park service assessment, which identifies the user needs for the reserve
- supporting Māori led aspirations.

The local community services and key initiatives outlined above contribute towards achieving the following outcomes in the Papakura Local Board Plan:

- Outcome 2: A community enriched by its diversity, where people feel connected and lead active, healthy lives
- Outcome 5: A partnership with Māori that creates a Papakura where Māori identity, culture and aspirations are embraced.

Levels of Service

We measure our performance against the following measures for each local priority. The level of service statement is in blue below.

Performance measure	Actual 2019/2020	Annual Plan Target 2020/2021	Long-term Plan Target 2021/2022
Provide safe, reliable, and accessible social infrastructure for Aucklanders that contributes to placemaking and thriving communities			
Percentage of Aucklanders that feel their local town centre is safe - day time	63%	61%	65%
Percentage of Aucklanders that feel their local town centre is safe - night time	25%	32%	28%
Utilising the Empowered Communities Approach, we support Aucklanders to create thriving, connected and inclusive communities			
The percentage of Empowered Communities activities that are community led	70%	45%	70%
The percentage of Empowered Communities activities that build capacity and capability to assist local communities to achieve their goals	94%	40%	70%
We provide safe and accessible parks, reserves, beaches, recreation programmes, opportunities and facilitates to get Aucklanders more active, more often¹			
The percentage of park visitors who are satisfied with the overall quality of sportsfields	68%	82%	75%

Performance measure	Actual 2019/2020	Annual Plan Target 2020/2021	Long-term Plan Target 2021/2022
The customers' Net Promoter Score for Pools and Leisure Centres	36	7	15
The percentage of users who are satisfied with the overall quality of local parks	76%	51%	60%
The percentage of residents who visited a local park in the last 12 months	75%	85%	85%
We showcase Auckland's Māori identity and vibrant Māori culture			
The percentage of local programmes, grants and activities that respond to Māori aspirations	45%	22%	45%
We fund, enable, and deliver services, programmes, and facilities (art facilities, community centres, hire venues, and libraries) that enhance identity, connect people, and support Aucklanders to participate in community and civic life¹			
The number of internet sessions at libraries (unique sessions over public computing or public WIFI networks) ³	93,961	120,000	163,100
The percentage of local community services, programmes and facilities that are community led	New measure	New measure	Set Baseline ²
The percentage of arts, and culture programmes, grants and activities that are community led	68%	75%	70%
The percentage of art facilities, community centres and hire venues network that is community led	18%	27%	27%
The number of participants for local community services, programmes, and facilities	New measure	New measure	Set Baseline ²
The number of attendees at council-led community events	1,500	1,400	1,500
The number of participants in activities at art facilities, community centres and hire venues ³	413,194	197,000	200,000
The number of visits to library facilities ³	164,696	230,000	255,000
The percentage of customers satisfied with quality of local community services, programmes, and facilities	New measure	New measure	Set Baseline ²
The percentage of attendees satisfied with a nominated local community event	72%	75%	75%
Percentage of customers satisfied with the quality of library service delivery	97%	85%	85%

¹ Some level of service statements have been combined to reflect the council's move toward new and integrated ways of delivering services. All levels of service and performance measures from previous years are included. There is no intended change to the level of service provided to the community.

² Baselines and targets for these performance measures will be developed during the next few years.

³ The increase in targets reflect an increase in the intended level of service due to the opening of the new Takaanini Community Hub and Library.

Local Planning and Development

This group of activities covers improvements to town centres, the local street environment as well as local environment and heritage protection. These activities also include working with business and community associations to improve local economic development and employment initiatives.

Our annual operating budget to deliver these activities is \$317,000.

The key initiatives we have planned for 2021/2022 include:

- work with the Papakura Commercial Project Group to plan and support continued development of the town centre and the wider commercial areas

- Heritage Interpretation Project – developing a trail of sites of significance in Māori and European history
- support Takanini Business Association, including the establishment of a new Business Improvement District (BID) programme for the area
- funding external partners to deliver free community events including StreetFest, Carols in the Park, Santa Parade and a summer variety concert.

The local planning and development activity, including the key initiatives outlined above contribute towards achieving the following outcomes in the Papakura Local Board Plan:

- Outcome 1: A vibrant and prosperous local economy
- Outcome 2: A community enriched by its diversity, where people feel connected and lead active, healthy lives
- Outcome 4: A treasured environment and heritage.

Levels of Service

We measure our performance against the following measures for each local priority. The level of service statement is in blue below.

Performance measure	Actual 2019/20	Annual Plan Target 2020/21	Long-term Plan Target 2021/22
We help attract investment, businesses and a skilled workforce to Auckland			
The percentage of Business Associations meeting their Business Improvement District (BID) Partnership Programme obligations	100%	100%	100%

Local Environmental Management

Local boards work in partnership with local communities and iwi to deliver projects and programmes to improve local environments. Our focus is on indigenous biodiversity, healthy waterways and sustainable living.

These activities include stream restoration, waste minimisation programmes, supporting environmental volunteers and partnering with schools to provide a range of environmental initiatives.

Our annual operating budget to deliver these activities is \$96,000.

The key initiatives we have planned for 2021/2022 include:

- working with neighbouring local boards on Papakura Stream restoration
- Te Koiwi Pond restoration
- implementation of the Urban Ngahere Action Plan
- working with other southern local boards to continue to support the Manukau Harbour Forum
- Papakura waste management and minimisation workshops
- ecological and environmental programme, involving annual pest plant and animal control, local park and beach clean ups, community environmental education and events.

The local environmental management activity and key initiatives outlined above contribute towards achieving the following outcome in the Papakura Local Board Plan:

- Outcome 4: A treasured environment and heritage.

Levels of Service

We measure our performance against the following measures for each local priority. The level of service statement is in blue below.

Performance measure	Actual 2019/20	Annual Plan Target 2020/21	Long-term Plan Target 2021/22
We work with Aucklanders to manage the natural environment and enable low carbon lifestyles to build resilience to the effects of climate change¹			
The percentage of local low carbon or sustainability projects that have successfully contributed towards local board plan outcomes ²	N/A	New measure	70%
The percentage of local water quality or natural environment improvement projects that have successfully contributed towards local board plan outcomes ²	N/A	New measure	80%
The percentage of local waste minimisation projects that have successfully contributed towards local board plan outcomes ²	N/A	New measure	70%

¹ The level of service statement has been amended to include the growing focus on addressing climate change. There is no intended change to the level of service provided to the community.

² New local environmental services performance measures have been introduced to track the delivery performance of local projects that contribute towards specific environmental outcomes in the local board plans.

Local Governance

Activities in this group support our 21 local boards to engage with and represent their communities and make decisions on local activities. This support includes providing strategic advice, leadership of the preparation of local board plans, support in developing local board agreements, community engagement including relationships with mana whenua and Māori communities, and democracy and administrative support.

The measures for this group of activities are covered under the Regional Governance group of activities in the Long-term Plan 2021-2031 which determine participation with Auckland Council decision-making in general. This includes local decision-making. There are no changes to the measures or targets for 2021/2022.

Our annual operating budget to deliver these activities is \$970,000.

Funding Impact Statement

This prospective funding impact statement has been prepared to meet the requirements of Section 21(5) of the Local Government (Auckland Council) Act 2009. It covers the year from 1 July 2021 to 30 June 2022 and outlines the council's sources of funding for local activities in this local board area and our plan to apply them.

\$000 Financial year ending 30 June	Annual Plan 2020/21	Long-term Plan 2021/22
Sources of operating funding:		
General rates, UAGCs, rates penalties	12,609	13,024
Targeted rates	247	250
Subsidies and grants for operating purposes	8	16
Fees and charges	266	382
Local authorities fuel tax, fines, infringement fees and other receipts	89	122
Total operating funding	13,219	13,794
Applications of operating funding:		
Payment to staff and suppliers	11,066	11,261
Finance costs	857	472
Internal charges and overheads applied	1,279	2,036
Other operating funding applications	0	0
Total applications of operating funding	13,202	13,769
Surplus (deficit) of operating funding	17	25
Sources of capital funding:		
Subsidies and grants for capital expenditure	0	0
Development and financial contributions	0	0
Increase (decrease) in debt	3,853	5,478
Gross proceeds from sale of assets	0	0
Lump sum contributions	0	0
Other dedicated capital funding	0	0
Total sources of capital funding	3,853	5,478
Application of capital funding:		
Capital expenditure:		
- to meet additional demand	169	2,125
- to improve the level of service	2,546	747
- to replace existing assets	1,156	2,630
Increase (decrease) in reserves	0	0
Increase (decrease) in investments	0	0
Total applications of capital funding	3,870	5,503
Surplus (deficit) of capital funding	(17)	(25)
Funding balance	0	0

Appendix A: Advocacy initiatives

A key role of the local board is to advocate for initiatives that the local board may not have decision-making responsibilities or funding for in this 10-year Budget but recognise the value it will add to the local community.

Key advocacy areas for this local board include:

Initiative	Description	Advocating to
Eke Panuku support to progress Papakura as a metropolitan centre	Seek Eke Panuku support to progress Papakura as a future vibrant metropolitan centre (as identified in the Auckland Unitary Plan). This will ensure Papakura continues to develop over time into a larger commercial and retail centre on a key transport hub to support residential growth in surrounding areas.	Governing Body Eke Panuku Development Auckland
Papakura train station as a key transport hub	Request funding to develop Papakura train station into a key transport hub with additional park-and-ride capacity, an expanded bus interchange and other actions such as an on-demand bus service, to manage car park demand at the Papakura train station.	Governing Body Auckland Transport Waka Kotahi/NZ Transport Agency (NZTA)
Request the reinstatement of the Local Board Transport Capital Fund	Request the reinstatement of the Local Board Transport Capital Fund to the pre-COVID-19 level of \$21 million annually and for the \$38 million previously allocated through the Local Board Transport Capital Fund to local boards, which was lost through the Emergency Budget 2020/2021, to be restored to allow the local board to continue the development of the shared walking and cycling pathways from Elliot St to Pescara Point and the Hunua Trail.	Governing Body Auckland Transport
Reserves keeping pace with development	Request funding for Papakura parks and reserves to keep pace with the significant development occurring around Papakura, e.g.: <ul style="list-style-type: none"> • Hingaia Reserve development stage 2 (playground) • Prince Edward Park softball pitch upgrade. 	Governing Body
South-east Auckland public transport service	The Papakura Local Board supports the Franklin Local Board advocacy for funding for Auckland Transport to provide a public transport service that links south-east Auckland communities to transport nodes at Papakura train station, Pine Harbour and Botany to allow for environmentally sustainable transport choices and access to council services and facilities.	Governing Body Auckland Transport
East-West links from SH1 to Mill Road	Request funding for Auckland Transport to progress east/west links (both road and shared pathways) in Papakura, connecting State Highway 1 and Mill Road, including neighbourhood loops.	Governing Body Auckland Transport Waka Kotahi/NZ Transport Agency (NZTA)
Replace the current on road Great South Road cycleway with an off-road cycleway	Request Auckland Transport replace the current on road Great South Road cycleway with an off-road cycleway and utilise the current cycleway area for a T2/bus lane.	Auckland Transport
Southern community recycling centre/resource recovery park	Request funding to create a community recycling centre, resource recovery park (eco-park) and e-waste facility to effectively service Papakura residents.	Governing Body
Manukau Harbour water quality	Request funding from the Water Quality Targeted Rate to: <ul style="list-style-type: none"> • deliver gross pollutant traps to reduce pollution flowing into the Manukau Harbour • further investment in the Papakura area and associated southern catchments to allow for growth. 	Governing Body

Initiative	Description	Advocating to
Pest Control	The Papakura Local Board supports the Manurewa Local Board advocacy for funding from the Natural Environment Targeted Rate for pest control and would like to see this applied to all boards.	Governing Body
Urban Ngahere Strategy in the south	Request the Governing Body include funding to support the roll out of the Urban Ngahere Strategy in the south.	Governing Body
Cumulative effects of housing intensification	The Papakura Local Board supports the Franklin Local Board advocacy for council to fund a response to manage the cumulative effects of housing intensification, including ad hoc Kāinga Ora projects, where single family dwellings are replaced by higher density housing with no corresponding social infrastructure investment.	Governing Body
Rehabilitation and maintenance of local roads supporting growth	The Papakura Local Board supports the Franklin Local Board advocacy for Auckland Transport funding to be increased for the FY2021-2024 for renewal, rehabilitation and maintenance, prioritising rehabilitation of roads that support the development of Auckland ie: roads and bridges supporting quarrying activity such as Papakura-Clevedon Road, Alfriston-Brookby Road, Whitford-Maraetai Road, Hunua Road, Settlement Road to Beach Road and on to Hingaia Road and Elliott Street.	Governing Body Auckland Transport
Response to climate change	The Papakura Local Board supports the Howick Local Board advocacy for increased regional funding to address the impact of climate change, sea level rise, and weather-related events on the coastline.	Governing Body
Upgrading rural roads to urban standards	The Papakura Local Board supports the Howick Local Board advocacy for funding to upgrade rural roads to urban standards, including widening narrow bridges, in response to growth of our urban areas e.g.: Alfriston Road.	Governing Body Auckland Transport
Review of Unitary Plan road width provisions	Request an addition to the planning work programme to undertake a review of the Unitary Plan rules in terms of addressing narrow roads, on-site parking and visitor parking in new developments, and the issue of tree protection given the significant number of trees being lost to development.	Governing Body

Appendix B: How to contact your Local Board

Local boards have been established to enable local representation and decision-making on behalf of local communities. You are encouraged to contact your elected members to have your say on matters that are important to your community.



Brent Catchpole – Chairperson

021 390 430

brent.catchpole@aucklandcouncil.govt.nz



George Hawkins

021 197 7553

george.hawkins1@aucklandcouncil.govt.nz



Jan Robinson – Deputy Chairperson, JP

021 193 6303

jan.robinson@aucklandcouncil.govt.nz



Keven Mealamu

09 301 0101

keven.mealamu@aucklandcouncil.govt.nz



Felicity Auva'a

021 526 941

felicity.auvaa@aucklandcouncil.govt.nz



Sue Smurthwaite

021 194 0401

sue.smurthwaite@aucklandcouncil.govt.nz

The board can be contacted at the address below:

Papakura Local Board office

35 Coles Crescent

Papakura 2110

For general enquiries, assistance and information, phone 09 301 0101 any time or visit aucklandcouncil.govt.nz

Local board meetings, agendas and minutes are available on the Auckland Council website: aucklandcouncil.govt.nz > About council > Meetings and agendas



Auckland Council disclaims any liability whatsoever in connection with any action taken in reliance of this document for any error, deficiency, flaw or omission contained in it.

Te tahua pūtea tau 2021-2031. Te tahua pūtea whakarauora. The 10-year budget 2021-2031. Long-term plan. Our recovery budget. Volume 3: Local board information and agreements