

Albert-Eden Urban Ngahere

Action Plan 2021



**Albert-Eden
Local Board**

Auckland Council





Contents

- 2 Introduction
- 10 The Whats, The Whys & The Whens
- 12 Tree Planting Principles
- 16 Partners
- 18 Goals
- 20 Objectives
- 24 Action Plans
- 30 References
- 32 Appendices

Introduction



Image 1: View of a streetscape in a residential area

The Albert-Eden Urban Ngahere Action Plan is a positive step towards seeking to recognise and replenish Tāmaki Makaurau’s urban ngahere. It is the result of determined advocacy of the Albert-Eden Local Board, community groups and stakeholders.

We are proud to produce a localised urban ngahere action plan which is intended to deliver on Auckland Council’s *Urban Ngahere (Forest) Strategy*¹. We are also committed to enhancing the urban ngahere and biodiversity within our local board area.

We have developed the Albert-Eden Local Board Ngahere Action Plan to connect our parks and open spaces. We will also continue to explore planting opportunities through these corridors to increase biodiversity and will seek to encourage important community initiatives; such as native urban ngahere regeneration, pollinator paths and the planting of fruiting species.

The Albert-Eden Local Board supported the development of a canopy analysis report to address the pressures on the urban ngahere and loss of tree cover, and to meet the targets set in *Auckland’s Urban Ngahere Strategy*¹.

This strategy has a stated target to increase Tāmaki Makaurau’s tree canopy cover from a regional estimate of 18 per cent (as assessed in 2013) to 30 per cent by 2050. The strategy also states an aim of having at least 15 per cent tree canopy cover in every local board area within this timeframe. Given the above, it is clear that a coordinated approach to achieving the targets for both local board areas and region-wide is necessary.

With the extent of the urban ngahere in the Albert-Eden Local Board area having now been assessed, we understand the need for a large number of planting projects to be committed to in the short and medium term. This will ensure that a flourishing urban ngahere can continue to develop into the future. Extensive national and international urban ngahere studies are in agreement about the benefits that the “lungs of a city” can bring to its inhabitants.

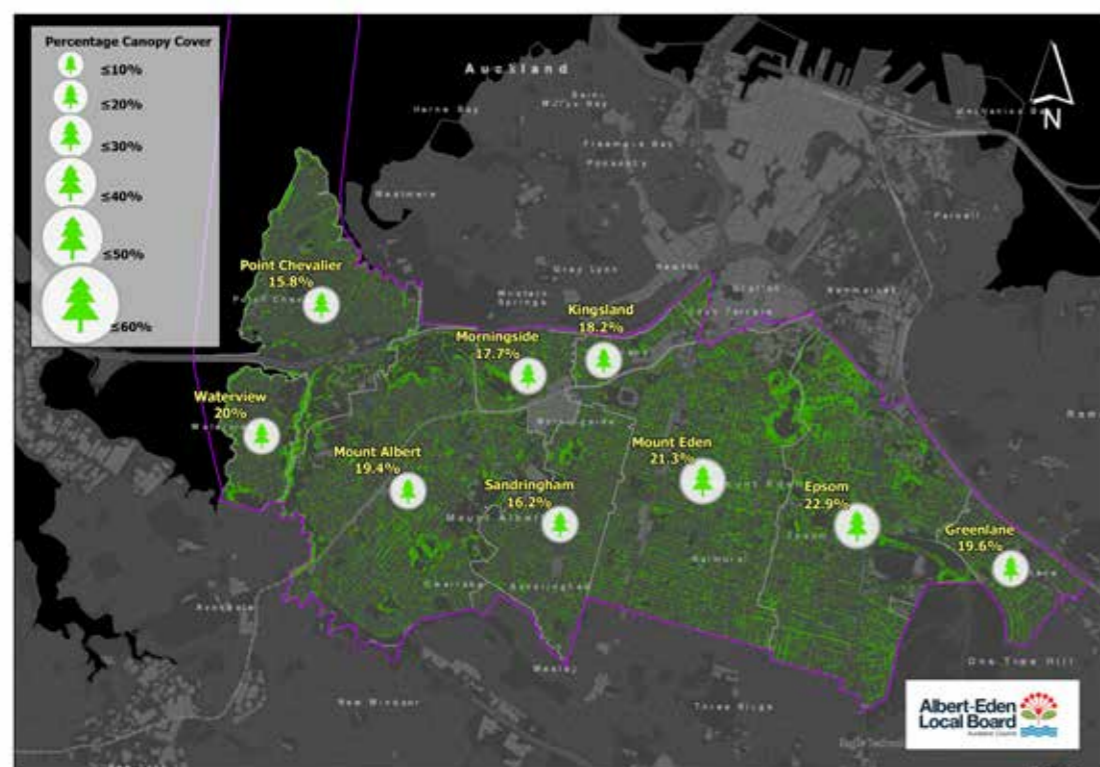
There are numerous benefits associated with having, developing and maintaining a flourishing urban ngahere.

The *Auckland's Urban Forest Canopy Cover: State and Change (2013 – 2016/2018)* report states that the Albert-Eden Local Board area has 22 per cent canopy cover²; 7 per cent above the desired minimum local board target detailed in *Auckland's Urban Ngahere (Forest) Strategy*¹ – please refer to the Albert-Eden Local Board LiDAR urban tree map below.

With a significant percentage of the local board area's 'suburban' urban ngahere assessed as growing on private land (which is subject to little, if any, tree protection legislation, by-laws or policies), it is reasonable to assume that, since the data was last captured and with no coordinated tree planting plan in place, urban ngahere canopy coverage within the local board area will have declined.

There are many different influences that can impact on our local natural environment and commitment to a well-considered tree planting action plan is required. For the betterment of our collective urban ngahere, the local board is pleased to make such a commitment.

A coordinated action plan, along with an effective long-term maintenance regime and well considered tree protection legislation, by-laws or policies will go a long way towards protecting, enhancing and maintaining a vibrant and essential urban ngahere within the local board area.



Map 1: Local Board urban tree map - canopy cover by percentage based on 2013 LiDAR



Ngā painga o te ngahere ā-tāone o Tāmaki Makaurau

Benefits of Auckland's urban ngahere





Urban Ngahere Strategy

Objectives



Knowing

Tāmaki Makaurau needs to know the status of its urban ngahere, the extent, number, and distribution of trees as well as their size, health and condition. Understanding the social, environmental, economic, and cultural value of Tāmaki Makaurau's ngahere and quantifying the benefits it provides will support better informed, strategic decision making about its management and growth.



Growing

Tāmaki Makaurau needs to grow its urban ngahere to increase and amplify the benefits trees provide and to address the inequity of where the ngahere is distributed across the region. By expanding and enriching its urban ngahere, Tāmaki Makaurau will maximise the social, environmental, economic and cultural benefits that trees, shrubs and other vegetation bring to an urban environment.



Protecting

Protecting existing urban ngahere is crucial to safeguarding the added values and benefits larger mature trees provide. Caring for saplings is critical for ensuring older trees are replenished before the end of their life, ensures our urban ngahere grows over time and publicly-funded planting is successful.

Mechanisms



Engage

Engage with partners and stakeholders – with mana whenua, residents, private landowners, community organisations, network utility operators and the private sector to ensure the urban ngahere is well managed, its benefits are well recognised and that growing and protecting the urban ngahere on public and private land is widely supported.



Manage

Manage the city's urban ngahere on public land through coordinated planning, strategic planting and smart, innovative urban design while facilitating best practice standards for work on and around trees through vegetation maintenance contracts.

The Whats, The Whys & The Whens

What is an urban ngahere action plan?

Why is an urban ngahere action plan needed?

When does an urban ngahere action plan get implemented?

This section provides details and answers to the 'whats', the 'whys' and the 'whens' of an effective urban ngahere action plan.

The What

This urban ngahere action plan:

- Is a road map that spells out what steps are required in order to achieve the stated goals of the Albert-Eden Local Board as they relate to the urban ngahere within the local board area boundaries.
- Details objectives and actions that support the local board's urban ngahere protection, development and maintenance goals.

The Why

This urban ngahere action plan:

- Is needed as currently there is no coherent tree planting plan to support the promotion, protection and enhancement of the urban ngahere within the boundaries of the local board area.
- Is required as a recent high level assessment has identified tree canopy cover loss throughout the local board area.
- Is necessary as a high level assessment of the current tree stock within the local board boundaries revealed vulnerabilities in the age spread, condition, species range and longevity of the existing tree canopy cover.

The When

This urban ngahere action plan:

- Outlines the requirements necessary to undertake to develop a ten year tree planting plan.
- Provides timeframes per key actions that support the goals and objectives of the Albert-Eden Urban Ngahere Action Plan.

Tree Planting Principles



With the western aspect of the Albert-Eden Local Board area being constrained by coastline, the presence of the motorway, the presence of the train line running through the local board area and along the eastern boundary and the suburbs containing intensive residential lots; a range of planting principles are required in order to establish new plantings that contribute long term to the board's overall urban ngahere canopy cover.

Examples of relevant tree planting principles are: planting the right tree in the right place; having a preference for native species; ensuring urban ngahere diversity; creating ecological corridors and connections; and seeking to manage the whole lifecycle of urban trees.

Tree planting principles are to be developed in a manner that address a range of issues (some being specific to the Albert-Eden Local Board area) such as:

- Salt tolerance
- Soil type
- Structural form
- Plant large where we can
- Heritage context
- Climate change species susceptibility/effects resilience
- Availability of space above and below ground
- Shading
- Leaf drop
- Future sight and view lines
- Visual amenity
- Infrastructure conflict
- Private property planting opportunities/assistance
- Pest and disease resistance
- Maintenance requirements
- Increasing biodiversity
- Bird and wildlife corridor creation/enhancement/linkages
- Have a well-proportioned mix of saplings, semi mature and mature trees across the area
- A species composition of 85 per cent native species and 15 per cent exotic species. The exotic species breakdown is as follows; 2.5 per cent fruit-producing species, 2.5 per cent species with functional uses (i.e. carbon

sequesters, ecosystem services) and 10 per cent exotic species with cultural significance.

When selecting species of trees, the tree planting principles are to be supported by the Auckland Council *Indigenous Terrestrial and Wetland Ecosystems of Auckland* (published 2017) report³. This document identifies species that are part of the various terrestrial and wetland ecosystems (and their variants) that have been located through Tāmaki Makaurau boundaries.

It is important to consider the extension, and/or creation of pollinator paths to help create corridors for birds, and insects to move along. Selecting tree varieties that provide flower sources for birds and insects are important to help build pathways for movement and to build the extent of habitat to support increased biodiversity at a local street and park scale.

Consideration is to be given to large trees that provide a diverse food source and habitat for native birds, as well as the maintenance of tall tree stumps that could provide nesting opportunities for birds.

Where appropriate, adopting the strategic principle of 'native first' when seeking to plant with appropriate species in ecologically relevant locations will assist in the enhancement of biological diversity, as well as aiding in ecological restoration.



Map 2: SEA and urban forest cover (based on 2013 LiDAR)

The effectiveness of individual species to remove carbon dioxide from the atmosphere and store it as carbon as part of their overall biomass over their lifetime is considered to be an important tree planting principle.

Planting platforms and opportunities can be found in the body of this report, for example:

- High level 'Suburb By Suburb Planting Opportunities'
- Survey Map; SEA and urban ngahere cover (based on the 2013 LiDAR)

When it comes to identifying planting locations and options, there are a wide range of opportunities to consider:

- Auckland Council sports fields, parks and reserves (i.e. Waterview Reserve; a large area that is sparse of trees)
- Auckland Transport land (i.e. grass berms, footpath tree pits, kerb build-outs, car parking spaces, new street gardens)
- Public cemeteries (note that some countries are now using trees as 'headstones')
- Government land (i.e. schools, hospitals, fallow sites)
- NZTA land
- Large planters along cycle lanes
- Future open space programmes and projects

- Community Facilities renewal program (during assessment of seating areas, playgrounds and rest areas) annually records the opportunity to plant new trees as part of the renewal upgrade to existing assets

- Green walls (i.e. amenity plantings that can be installed in planters/on fencing/on wires attached to sides of public/commercial buildings)

- Privately owned land (as planting in public spaces alone will not be able to achieve the desired canopy cover change)

Where possible, consideration of planting large grade specimens helps ensure we get 'larger trees faster' so as to give rise to the urban ngahere benefits sooner.

Planting with a variety of species is particularly important when addressing resilience issues such as pest and disease, and climate change species vulnerabilities. A small species range could get decimated by a pest and/or disease infestation (i.e. Dutch Elm Disease and Kauri Dieback), just as a cooler, dryer climate-loving species may suffer in the predicted warmer and more moist seasons that Tāmaki Makaurau is likely to face in the future.

We will work with the community, Auckland Council, Ministry for Primary Industries and iwi to isolate incidents, prevent further spread

of pest trees, educate and plant a diversity of tree species that are resilient to current disease to ensure the survival of our urban ngahere.

We will work with Auckland Council to petition central Government to implement changes to the current legislation. The board supports the reinstatement of some form of general tree protection across its local area to preserve and protect larger and more mature trees.

Of equal importance is ensuring that we address 'Seed to Succession' issues, with a focus on 'end of useful life' timing (as Kew Gardens in the UK found out in the 1987 storm, when they lost a large number of over-mature specimens and did not have sufficient middle age trees to carry them through), as well as providing bird and wildlife corridor creation and enhancement, along with linking Significant Ecological Areas (SEAs).

A combination of the above will ensure that, by introducing and maintaining a wide range of tree species, sizes and ages, a future healthy, vibrant and benefit-producing urban ngahere will be present for many years to come.

As stated in *Auckland's Urban Ngahere (Forest) Strategy*¹ – 'Together, growing Tāmaki Makaurau's urban ngahere for a flourishing future.'

Partners

The results of this urban ngahere action plan will benefit not only the residents of the Albert-Eden Local Board area but also Tāmaki Makaurau's community as a whole. Given this fact and the very relatable nature of planting a tree, creation of a viable and sustainable network of partners who can provide support in a myriad of ways is important; so much so that it is listed as one of the goals of this plan.

Examples of those entities who could partner in the deliverables of this plan are:

- Department of Conservation
- Tūpuna Maunga Authority (TMA)
- EnviroSchools
- Cornwall Park Trust
- Friend of Maungawhau
- Mt Eden Village Centre
- Raise Up
- Epsom Community Centre
- Friends of Oakley Creek
- St Lukes Environmental Protection Society
- Other community volunteer groups
- Local school/community groups to operate eco-sourced nurseries
- Local churches
- Private land owners (possible for Auckland Council to fund the planting of trees on private properties)
- Commercial land owners (possible to install climbing green walls on/up sides of privately-owned buildings where trees can't be established)
- Auckland Council's Community Facilities department (by engaging with and supporting the renewals programme, create new planting locations by undertaking the removal of noxious trees/plants)
- Auckland Transport (engage with the maintenance programme i.e. retire hard stands to create new planting spaces)
- Healthy Waters (engage with the revegetation program, assist in the creation of educational rain gardens)
- Network Utility Operators (engage regarding planting location restrictions around network assets, support Vector's Overhead Improvement Program)
- Work with Panuku and Auckland Unlimited to develop and incorporate new planting opportunities within their new development and facility maintenance projects
- National environmental entities (Forest and Bird, Project Crimson, Trees That Count)
- Nursery Association (gain support by way of quality production donation/ price reduction)
- Government departments (opportunity to plant large trees for shading benefits in schools and hospitals, support from Department of Corrections to grow seedlings)
- Kainga Ora (engage with a focus to mitigate the effects of vegetation losses as a results of their developments, etc.)
- NZTA (discuss species used in motorway plantings and their future long term protection and explore planting opportunities on surplus land)



Goals

Knowing, Growing, Protecting.

The goals of the Albert-Eden Local Board in relation to the assessment, protection, management and development of the urban ngahere within the local board area are as follows:

- To create sustainable urban ngahere within the local board area that meets the needs of our community and surroundings
- To achieve 5 per cent increase of tree canopy cover within the local board area boundaries by 2030
- To achieve 30 per cent tree canopy cover within the local board area boundaries by 2050
- To further enhance and amplify efforts to establish corridors of vegetation to link small and large open space areas
- To increase public awareness around the need to promote, protect and enhance the urban ngahere, including mangroves along the coastal fringes, within the local board area
- To create a network of partners to support the development and maintenance of the urban ngahere within the local board area



Objectives

Knowing, Growing, Protecting.

In order to achieve the Albert-Eden Local Board's goals in relation to the assessment, protection, management and development of the urban ngahere within the local board area, the following objectives are required to be undertaken:

- Research and compile a list of planting opportunities within the road reserve, parks and reserves, and commercial environments within the Albert-Eden Local Board area
- Develop a suitable species list of small, medium and large trees to be used in the identified list of planting opportunities
- Develop an urban ngahere tree planting promotional program that engages stakeholders and partners
- Review and set up an accurate tracking system of Auckland Council's tree planting and maintenance practices
- Auckland Council Call Centre can be contacted on 09 301 0101 or via the council website www.aucklandcouncil.govt.nz. They can log maintenance requests to attend to newly planted trees, to review a site for a replacement tree planting, and to request that a new tree is planted
- Develop a 10 Year Tree Planting Plan (supported by a suitable funding framework)
- Engage with tree nursery suppliers and develop a nursery 'Growing Plan' that will service the 10 Year Tree Planting Plan
- Provide a report to the local board that outlines the financial requirements to support the funding commitments of the 10 Year Tree Planting Plan
- Continue discussions with Auckland Council regarding current levels of tree protection rules and their effectiveness as they relate to the protection and enhancement of the urban ngahere
- Council's Governing Body has commenced discussions with Central Government to highlight the need for change to the Resource Management Act to enable new or better rules to protect large trees of importance in Tāmaki Makaurau
- Work with Auckland Council and the Albert-Eden Local Board to collaboratively explore the development of an advisory service for tree care to help provide advice to customers on tree care and maintenance. Promote the value of professional tree care and work with national organisation to develop advisory service



By implementing these objectives, and in line with the stated goals, this urban ngahere action plan intends to ensure that:

- We engage with all stakeholders, partners, schools & local community groups so as to seek support regarding the planting & maintenance of future urban forest plantings
- The right trees will be planted in the right places
- The tree supply and planting works will be cost effective
- We arrange annual tree planting events
- We explore the options for setting up a tree fund to help with maintenance of large notable trees in the local board area



Action Plans



Introduction

Tree planting 'Action Plans' will be developed to deliver on the planting aspirations of the Albert-Eden Local Board. This will involve site-specific assessments and consultation about planting opportunities that exist within the board's boundaries. New tree planting will assist with the local board's efforts on adaptation and mitigation measures to help respond to climate change by positively leveraging efforts to "become a low carbon community" and implement the Action Plan.

To undertake the required activities that support the delivery of the Action Plans, the following matters will be considered and implemented:

Action

- Undertake a detailed assessment of planting opportunities within the road reserves, parks and reserves, and commercial environments to continue the greening of the Albert-Eden Local Board area
- In accordance with the principles outlined in *Auckland's Urban Ngahere (Forest) Strategy*¹, research and compile a 'suitable species list' and 'tree planting principles' that will apply to all identified planting opportunities
- Develop a detailed 'Planting Opportunities List' that will help to deliver the goal of providing 30 per cent of tree canopy cover within the Albert-Eden Local Board area by 2050
- Develop a 1 - 3, a 4 - 6 and a 7 - 10 Year Funding Framework to deliver on the 'Planting Opportunities List'
- Record metrics that reflect estimated tree canopy cover percentage increase across the local board area post completion of all identified planting opportunities, as well as the estimated growth of existing trees up to 2050

Education

- Research, engage and enrol tree nursery suppliers regarding tree stock production standards, current stock availability and species selection for future plantings
- Undertake an assessment regarding the necessity for effective tree protection to support the long term protection, management and development of the urban ngahere
- Develop a promotional program that engages with identified stakeholders, partners and the wider public

Planting

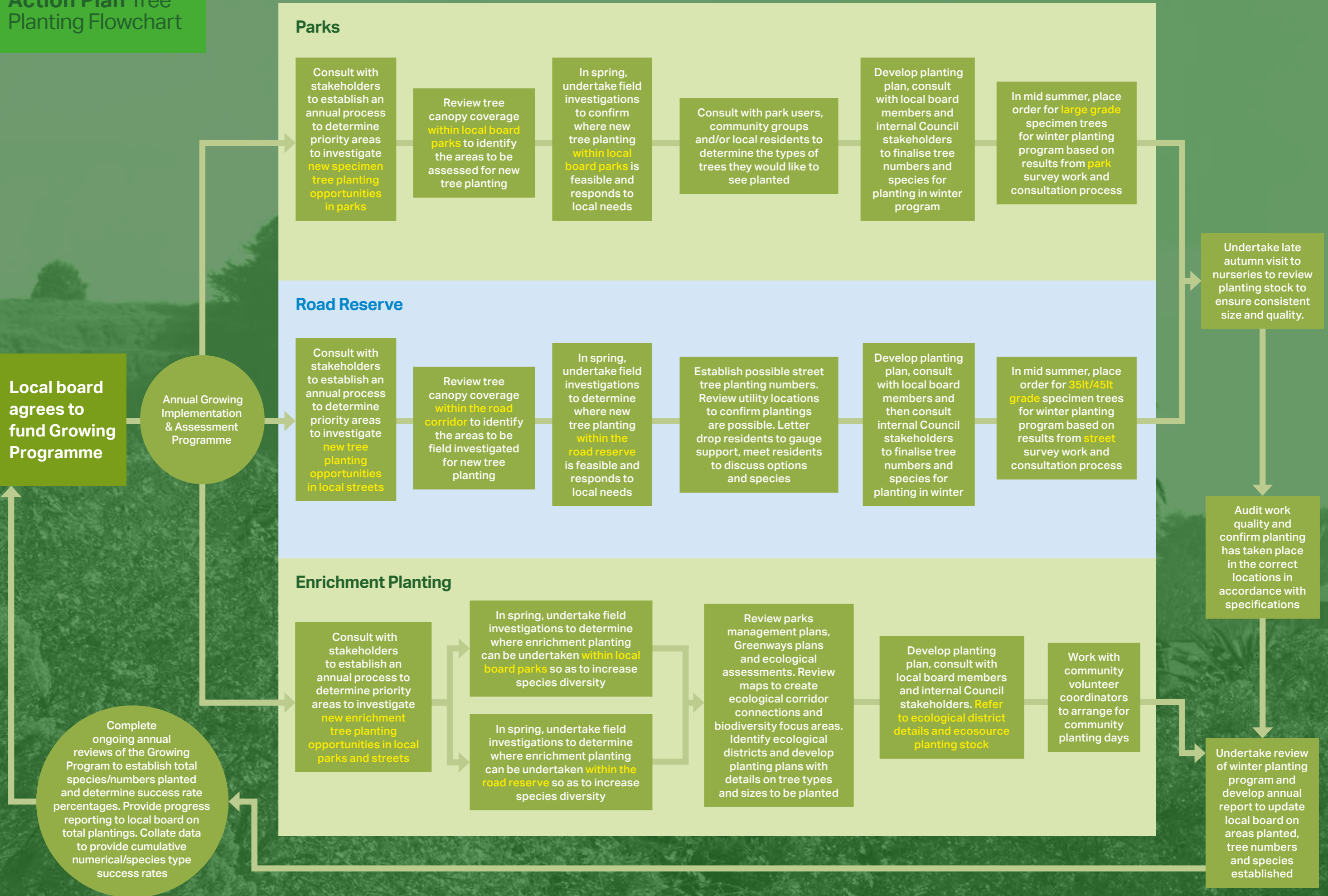
- Compile indicative tree supply and planting pricing (that includes 3 years post-planting maintenance, metrics assessments and reporting) to deliver on the 'Planting Opportunities List'
- Investigate the opportunity to establish an annual resident programme to enable new trees to be planted and maintained by residents in a 'Nominate a Tree' scheme
- Consider planting opportunities that include tree species that provide flowers, nectar and fruit to help support biodiversity
- Discuss and confirm best practice tree planting and ongoing maintenance methods with Auckland Council's Community Facilities department

Community Support

- Confirm with the Albert-Eden Local Board a funding commitment for the 10 Year Tree Planting Plan and the 10 Year Funding Framework
- Immediately post adoption of the Action Plan, implement Year 1 of the 10 Year Tree Planting Plan
- Encourage and support volunteers in the community to be enabled to support the growth of the urban ngahere, working with contractors and local volunteer groups to deliver outcomes, e.g. through community grants
- Investigate opportunity to establish an annual resident scheme which would allow residents to nominate heritage and notable trees in the local board area
- Investigate opportunity to establish a contestable fund that would support private property owners to maintain large heritage and notable trees in their private property, enhancing bio- diversity in the local board area
- Investigate opportunities to establish an initiative that would provide the local board with a platform to acknowledge individuals for their contributions to making reserves and private properties pest plant free



Action Plan Tree Planting Flowchart



References

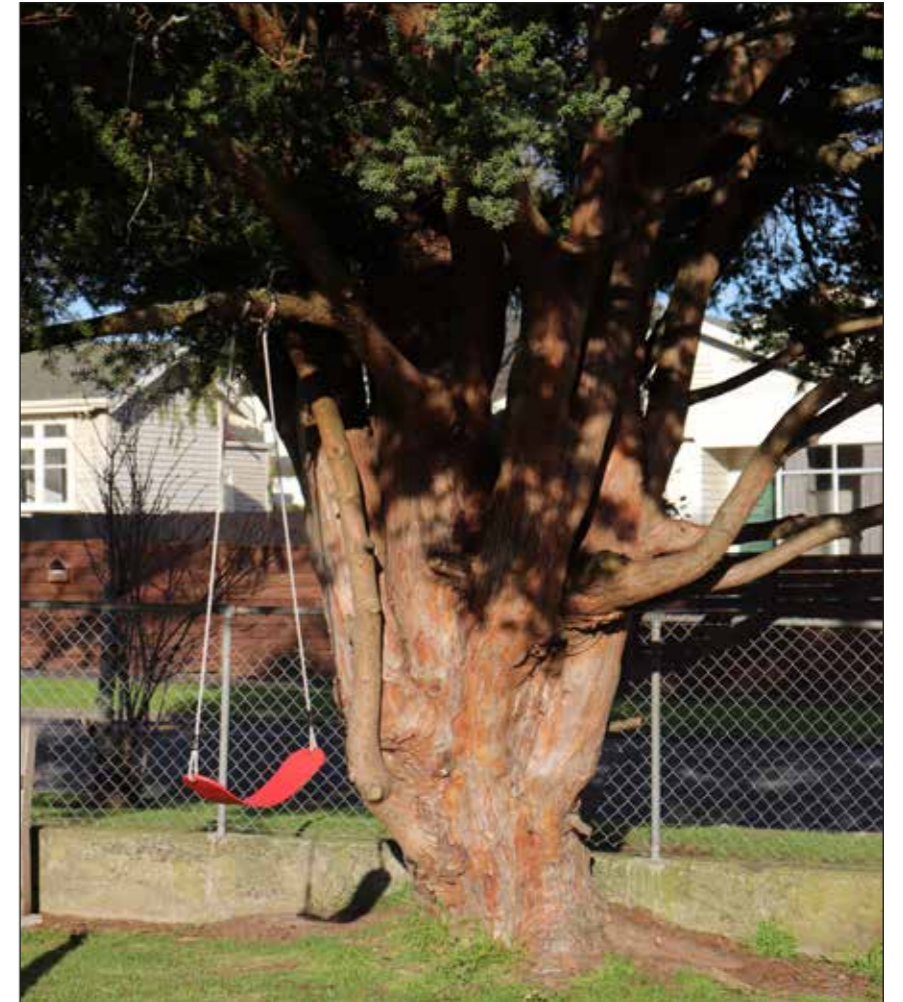


Image 2: A children's swing on a tree

1. Auckland Council Research and Evaluation Unit. (2019, March). *Auckland's Urban Ngahere (Forest) Strategy*. <https://www.aucklandcouncil.govt.nz/plans-projects-policies-reports-bylaws/our-plans-strategies/topic-based-plansstrategies/environmental-plans-strategies/documents/urban-ngahere-forest-strategy.pdf>
2. Golubiewski, N., Lawrence, G., Zhao, J., & Bishop, C. (2020). *Auckland's Urban Forest Canopy Cover: State and Change (2013-2016/2018)*. <https://www.knowledgeauckland.org.nz/publications/auckland-s-urban-forest-canopy-cover-state-and-change-2013-20162018/>
3. Singers, N. J., Osborne, B., Lovegrove, T., Jamieson, A., Boow, J., Sawyer, J. W. D., & Webb, C. (2017). *Indigenous terrestrial and wetland ecosystems of Auckland*. Auckland Council, Te Kaunihera o Tāmaki Makaurau.

Auckland Council. (2017). *Albert-Eden Local Board Plan 2017*. <https://www.aucklandcouncil.govt.nz/about-auckland-council/how-auckland-council-works/local-boards/all-local-boards/Documents/albert-eden-local-board-plan-2017.pdf>

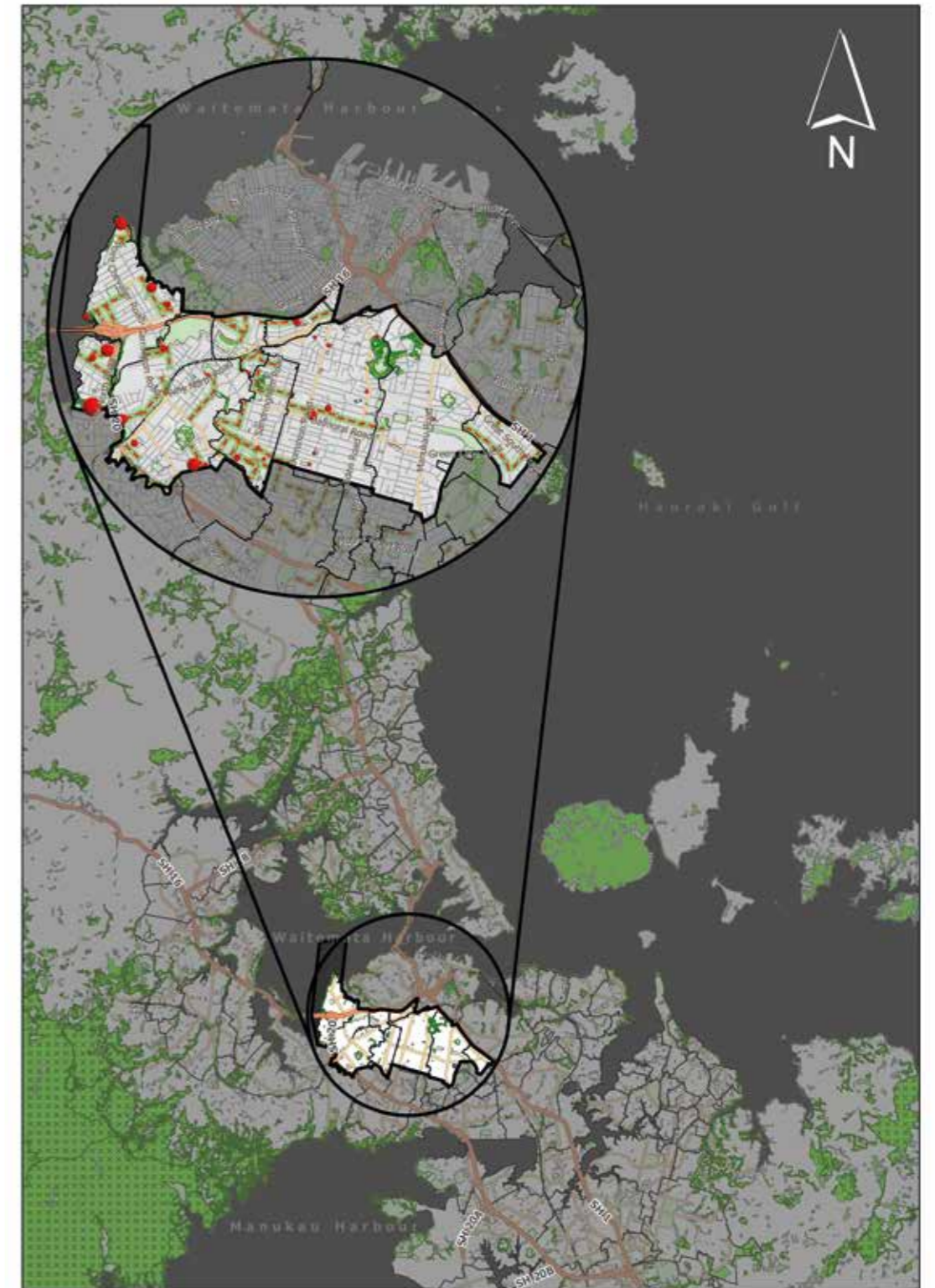
Auckland Council. (2019). *Local Development Initiative - Ngahere Work Programme. Year 1: Knowing Phase. Urban Ngahere (Forest) Analysis Report September 2019*.

Wilcox, M. D. (2012). *Auckland's Remarkable Urban Forest*. Auckland Botanical Society.

Appendices



Potential Tree Planting Opportunities



Map 3: Albert-Eden Local Board area

Surveying and Data Collection

As outlined in the Action Plan Tree Planting Flowchart, further detailed site investigations are required to be undertaken so as to confirm suitability of potential planting locations. These site investigations involve a variety of issues i.e. consultation with all relevant stakeholders, presence of underground services, visual amenity issues, plant species selection, future growth, form and site suitability.

As part of the development of the Action Plan's structure of how to investigate potential tree planting opportunities, in the initial trial phase relating to site investigations, it was decided to prioritise ground-truthing surveys (information provided by direct observation) via a clear purpose to better utilise the available time and resources. A spreadsheet of Council parks and reserves which contained variable site characteristics (including land use and tree cover) was provided to assist in developing a list of sites in which to undertake the initial investigations. As specified in the Local Board Plan, parks and reserves were prioritised for potential tree planting investigations and were selected using the following criteria;

1. Is there a playground within the park or reserve?
2. Is the park or reserve's overall tree cover less than 10 per cent?
3. Is there shade from existing trees casting over the playground?

Presence of playgrounds was selected as the main priority target in the initial survey, as increased planting and tree cover in these areas would likely provide measurable social and environmental benefits to local communities enabling connections to nature. As the first priority, parks and reserves were assessed on the basis of the presence of a playground; these locations were then filtered further by percentage of tree cover, with parks and reserves containing 0-15 per cent canopy cover selected next. A desktop review using aerial imagery, site observations and comments detailed in current, relevant Council data was further assessed to determine whether trees within the selected parks and reserves shaded playgrounds, with a corresponding list of these sites then compiled for each local board.

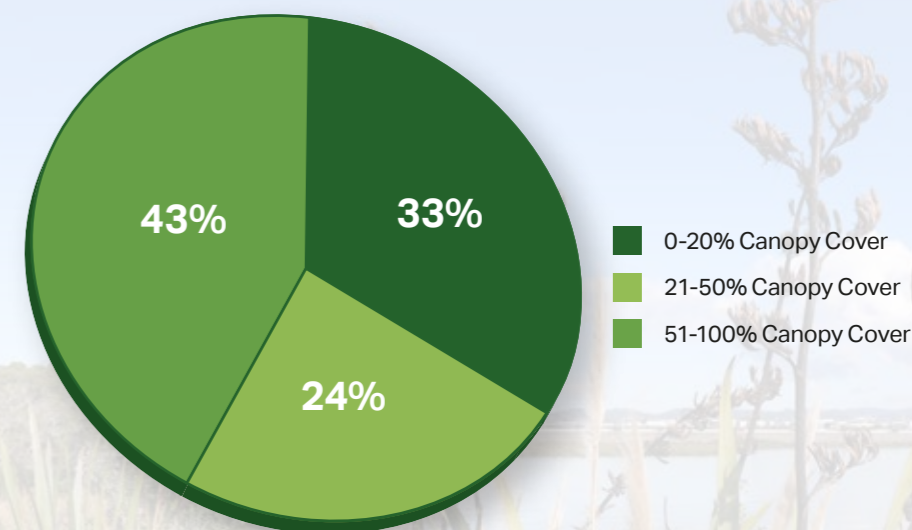
Ground-truthing was used to determine the extent of tree cover and whether new plantings had been provided that were not visible on aerial imagery. Surveys were expanded once on site to determine if more trees could be planted within the parks and reserves outside of the immediate vicinity of the playground footprint to include open areas, park edges, etc. Site observations during ground-truthing identified the need for more trees, especially on hot sunny days when park users' crowded within the shaded areas provided by tree canopy cover. Further reviews, investigations and ground-truthing would be required

to identify additional parks and reserves that have no playgrounds and low canopy cover.

Road reserve selection and street tree planting followed a separate assessment. The street tree ground-truthing followed the parks and reserves site surveys; streets were selected based on connectivity to parks and reserves previously identified, as well as connectivity to ecological areas such as coastal environments and stands of native vegetation or SEAs. A further desktop assessment based on 2013 LiDAR data for canopy cover identified streets where canopy cover was low and streets where berm planting was feasible from an aerial imagery perspective. Connectivity was the priority for streets; ground-truthing was used to identify streets where canopy cover was low to non-existent and therefore required berm planting, and, when canopy cover was present, whether infill planting was possible.

Canopy Cover of all Parks with Playgrounds

Graph 1: Percentage canopy cover of Albert-Eden playgrounds



Albert-Eden Planting Opportunities

Graph 2: Albert-Eden planting opportunities for playgrounds, parks and road reserves



a) On-Site Data Capture Survey Form

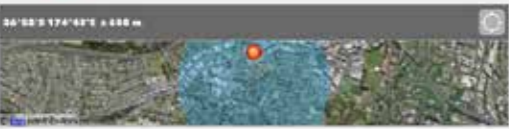
My Survey

Survey Staff: _____

Date: Wednesday, 19 August 2020 11:30 AM

Local Board:

- Henderson Massey
- Hibiscus & Bays
- Kaipatiki
- Upper Harbour
- Mangere-Otahuhu
- Meungakeikei-Tamaki
- Howick
- Otara-Papatoetoe
- Albert-Eden
- Orakei
- Puketapapa

Location *


Site

Planting Location:

- Street Tree
- Park Tree

Street Name: _____

Street Number: _____

Planting Priority:

- 1 = High priority (no trees)
- 2 = Medium priority (additional plantings)
- 3 = Low priority (infill plantings)

Street Characteristics:

- Berm
- Footpath
- Planter
- Traffic Island
- Bus Stop
- Near Intersection

Infrastructure:

- Overhead Lines
- Power Pole
- Hydrant
- Water Meter
- Valve
- Telecom
- Plinth
- Gas
- Catch Pit
- Manhole
- Lighting
- Signage
- Vehicle Crossing
- Other

Comments: _____

My Survey

Site

Planting Location:

- Street Tree
- Park Tree

Park Name: _____

Planting Priority:

- 1 = High priority (no trees/playground, no trees)
- 2 = Medium priority (additional plantings)
- 3 = Low priority (infill plantings)

Park Characteristics:

- SEA
- Native Plantings
- Specimen Trees
- Gardens

Comments: _____

Infrastructure:

- Manhole
- Lighting
- Signage
- Seating
- Playground
- Other

Comments: _____

Site Characteristics:

- Flat
- Bank
- Slope
- Ridge
- Gully
- Swale
- Stream
- Wetland
- Insufficient Root Volume
- Grade Change (+)
- Grade Change (-)
- Moisture Retentive
- Moisture Deficit
- Permeable
- Impermeable
- Irrigation
- Compacted
- Clay

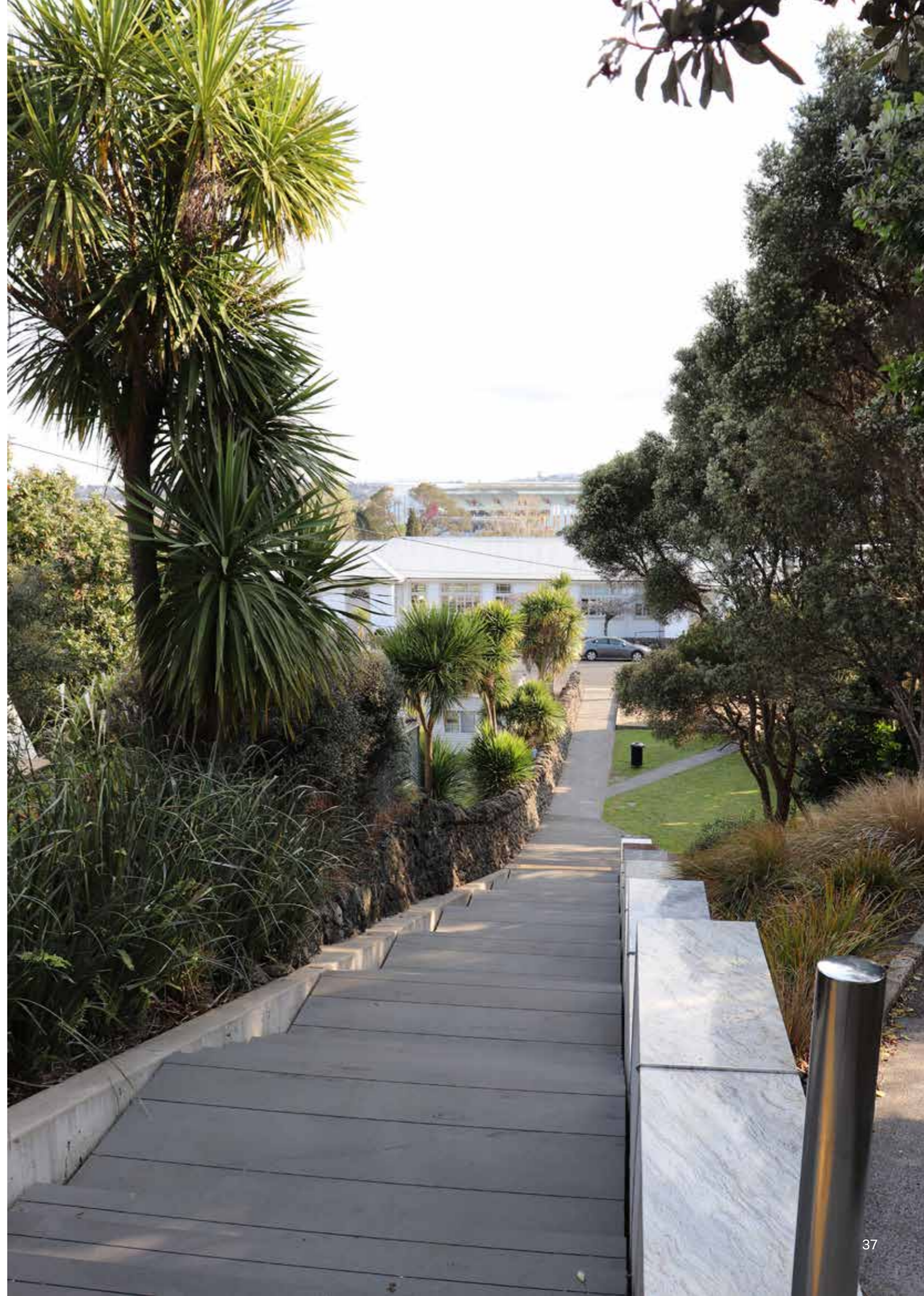
Comments: _____

Possible Species (Botanical name): _____

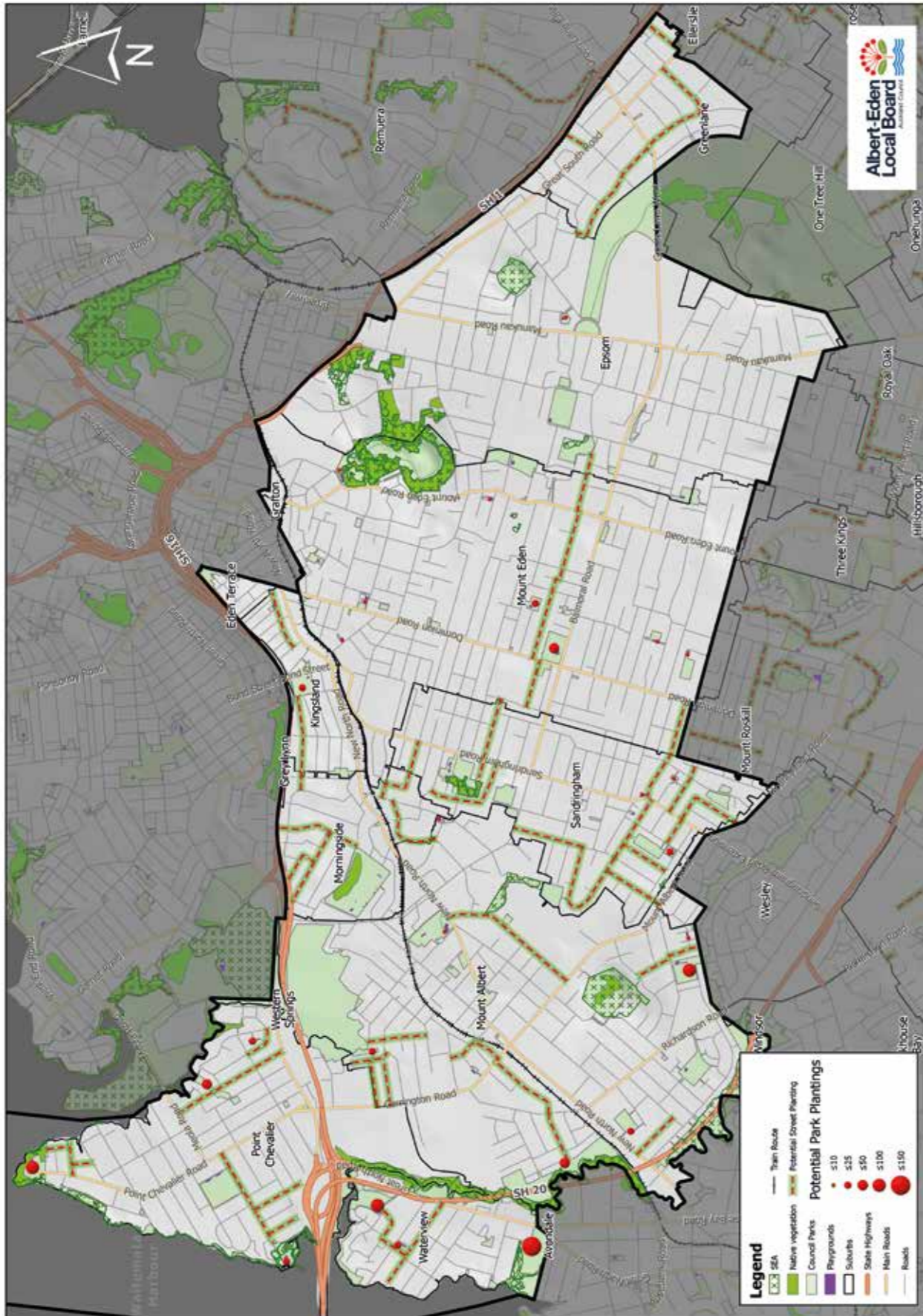
Number of Trees * _____

Comments: _____

Site Photo: _____

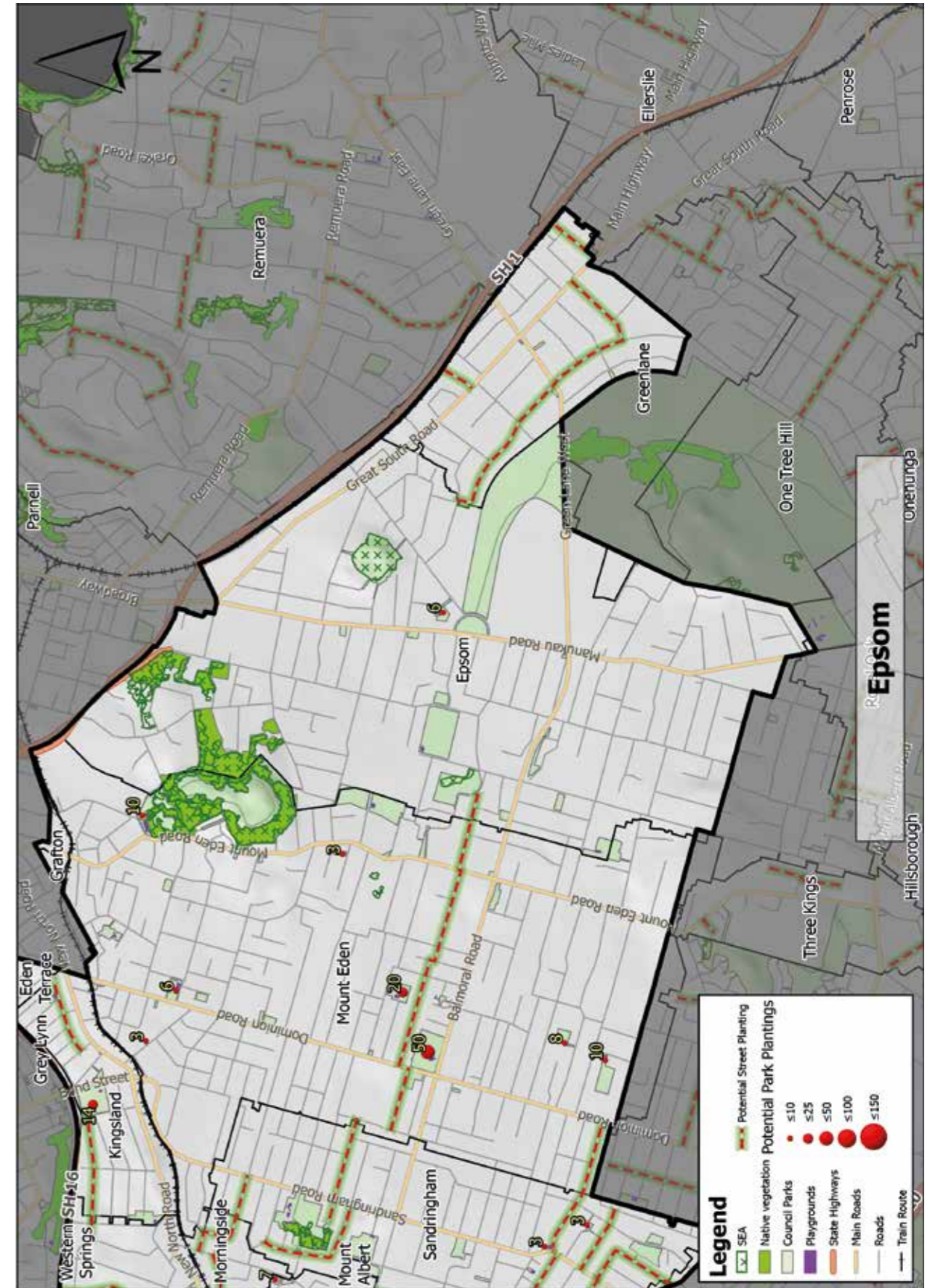


b) Albert-Eden Tree Planting Opportunities Map

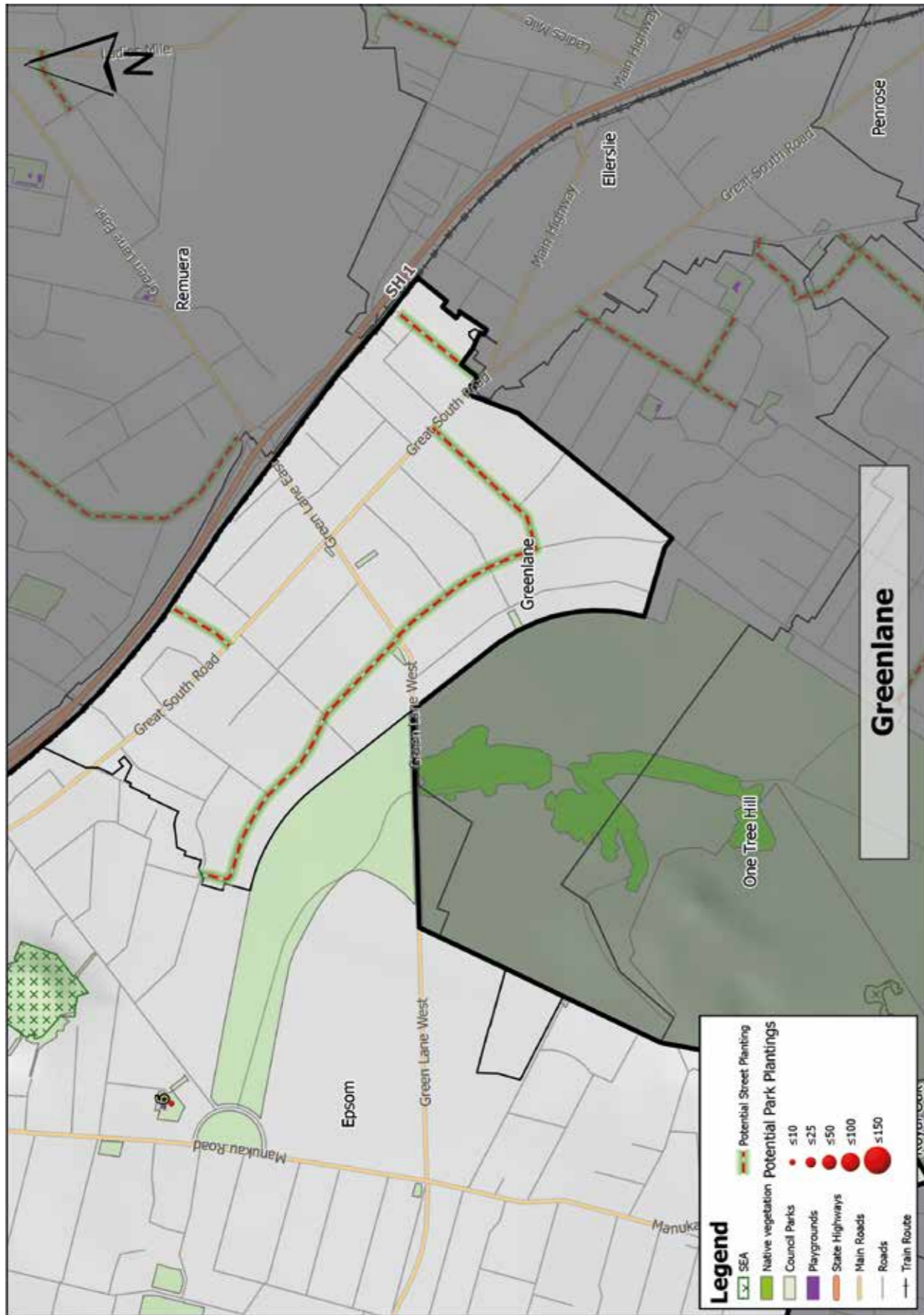


Map 4: Planting opportunity locations for the Albert-Eden Local Board area

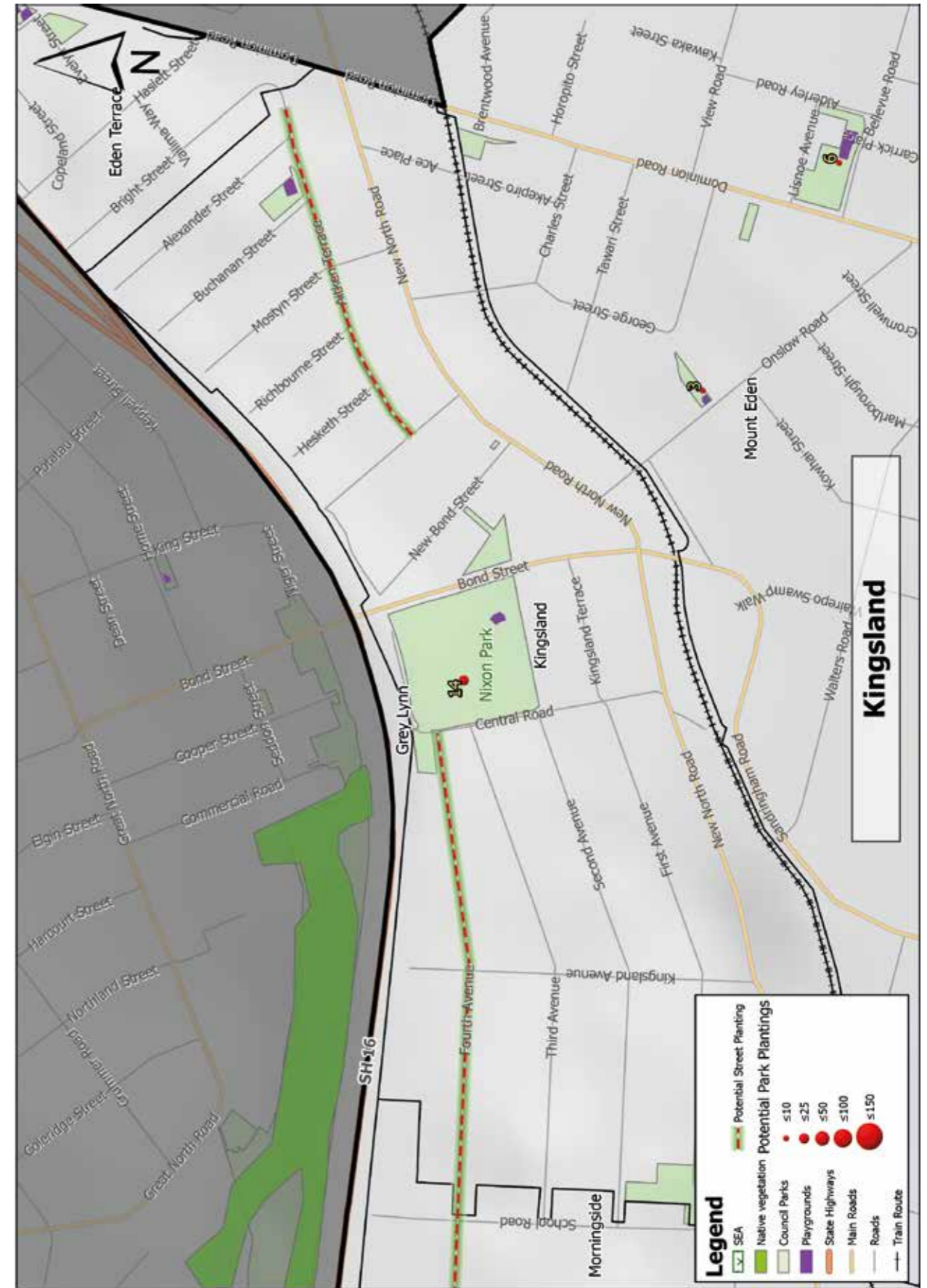
c) Suburb by Suburb Tree Planting Opportunities



c) Suburb by Suburb
Tree Planting Opportunities (continued)



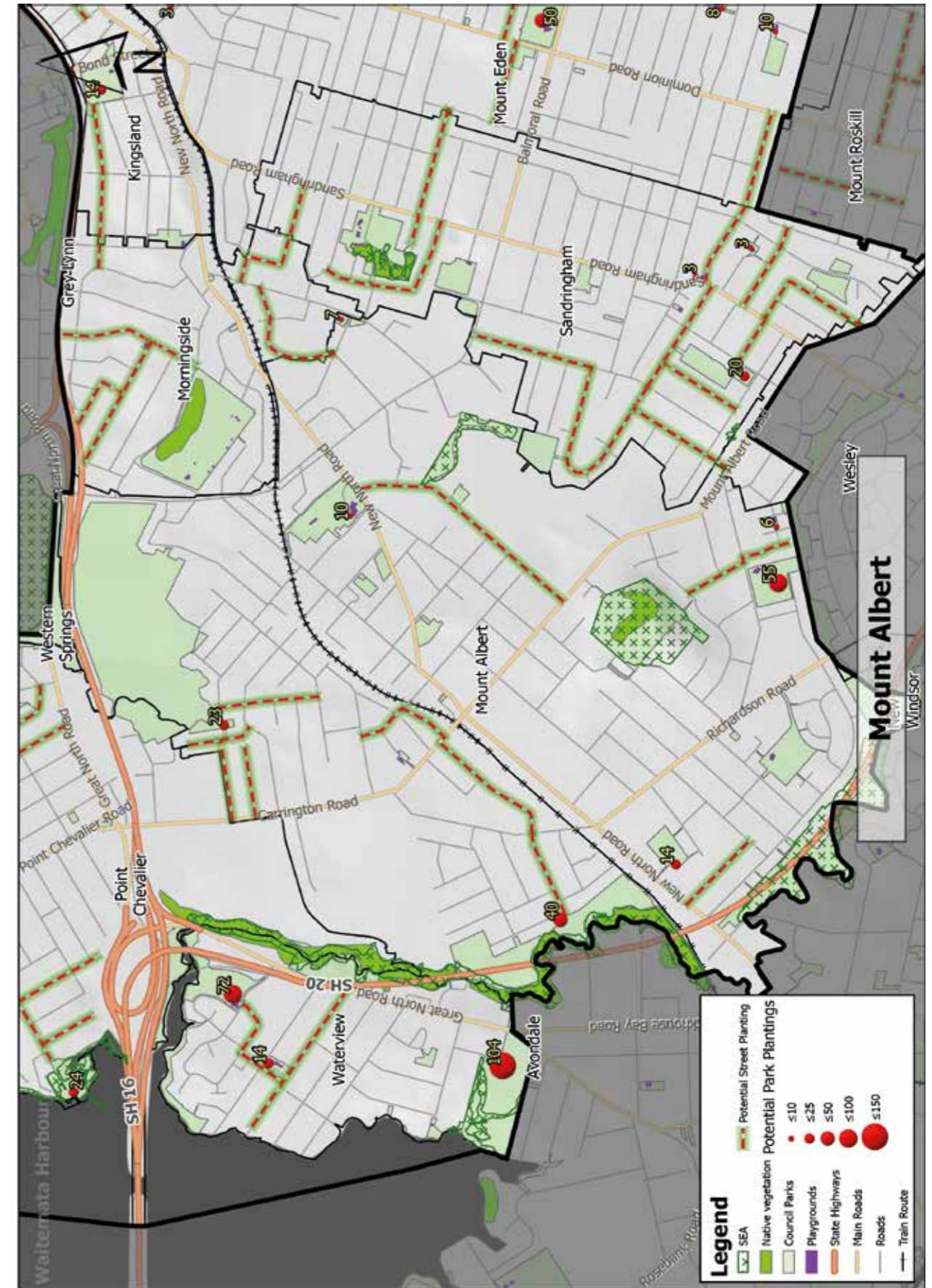
c) Suburb by Suburb
Tree Planting Opportunities (continued)



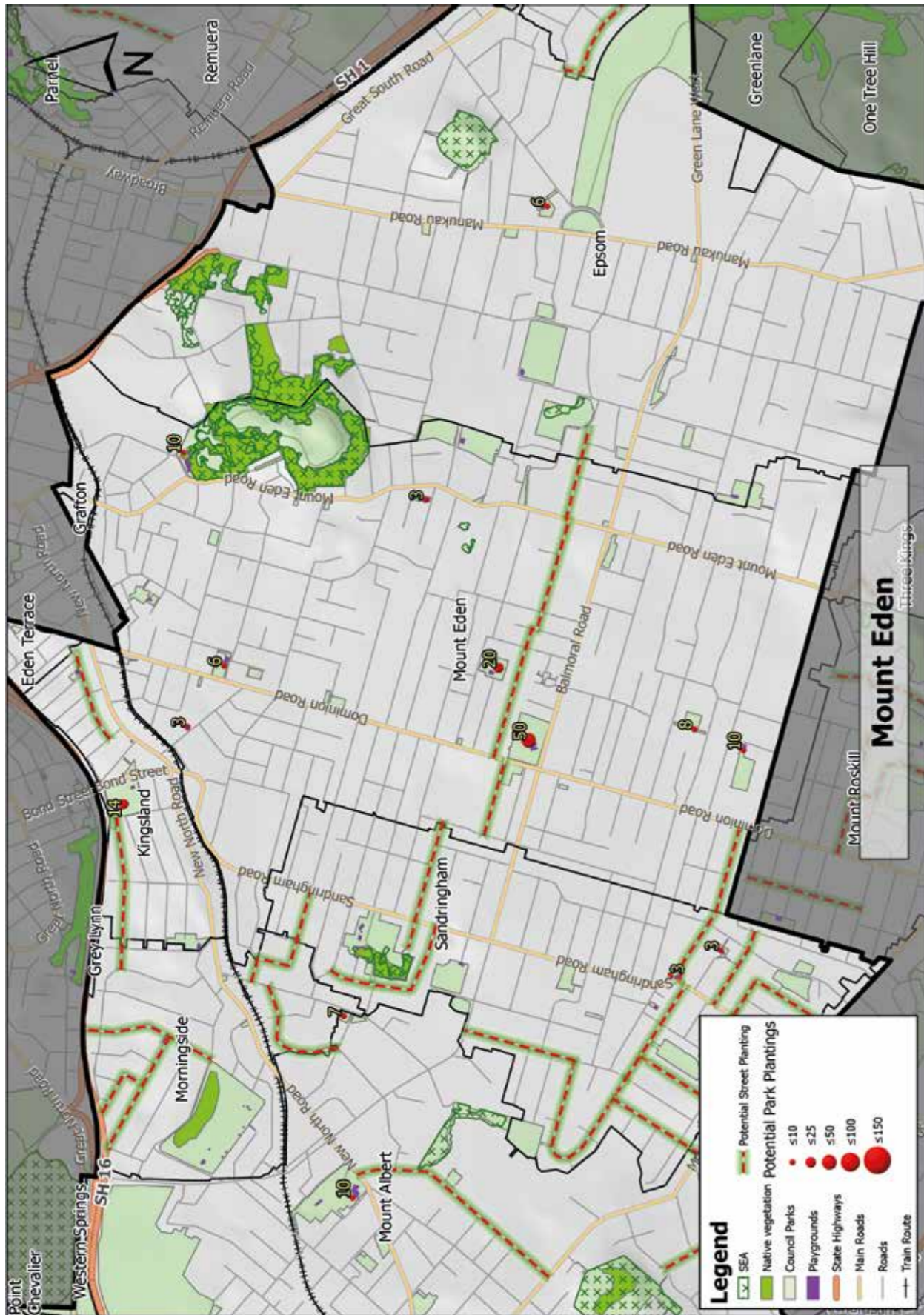
c) Suburb by Suburb
Tree Planting Opportunities (continued)



c) Suburb by Suburb
Tree Planting Opportunities (continued)



c) Suburb by Suburb
Tree Planting Opportunities (continued)



c) Suburb by Suburb
Tree Planting Opportunities (continued)



c) Suburb by Suburb
Tree Planting Opportunities (continued)



c) Suburb by Suburb
Tree Planting Opportunities (continued)



c) Suburb by Suburb
Tree Planting Opportunities (continued)



d) Albert-Eden Park and Street Tree Planting Opportunities

The following tables detail the total number of planting opportunities within parks with playgrounds, along with possible planting sites within the road reserve.

In respect to recommended species to be planted within parks with playgrounds, this determination will occur when site-specific assessments are being undertaken. The tree species detailed in the 'Streets' table are a recommendation based on surrounding existing plantings.

Parks/Playgrounds Planting Opportunities

Name	Plantings Around Playgrounds	Plantings Throughout Park
Aitken Reserve	0	0
Anderson Park	4	10
Bellevue Reserve	0	6
Braemar Reserve	0	0
Centennial Park	8	0
Coyle Park	0	62
Delphine Park	6	0
Eric Armshaw Park	14	10
Essex Reserve	0	3
Griffin Reserve	2	4
Harbutt Reserve	0	40
Harwood Reserve	3	0
Heron Park	4	100
Kuaka Reserve	4	10
Moa Reserve	3	25
Monkey Hill	3	0
Mt Albert War Memorial Reserve	3	7
Nixon Park	8	6
Owairaka Park	0	55
Pollard Park	2	8
Potters Park	10	40
Premier Reserve	0	19
Rawaplindi Reserve	7	16
Sainsbury Reserve North & South	0	7
Sandringham Reserve	1	2
Taumata Reserve	0	20
Taylors Park	6	14
Virginia Reserve	0	12
Waterview Reserve	18	54

d) Albert-Eden Park and Street Tree Planting Opportunities (continued)

Streets/Road Reserve Planting Opportunities

Name	Tree Species	Potential Planting Opportunities
Aitken Terrace	<i>Hymenosporum flavum</i>	7
Alberton Avenue	<i>Pittosporum eugenioides</i>	24
Alford Street	<i>Alectryon excelsus</i>	7
Aroha Avenue	<i>Griselinia littoralis</i>	11
Bangor Street	<i>Sophora chathamica</i>	6
Bannerman Road	<i>Sophora chathamica</i>	24
Begbie Place	<i>Melia azedarach</i>	6
Berridge Avenue	<i>Pittosporum crassifolium</i>	6
Brixton Road	<i>Prunus sp.</i>	9
Bungalow Avenue	<i>Michelia doltsopa</i>	1
Cambourne Road	<i>Metrosideros excelsa "Mistral"</i>	7
Cardigan Street	<i>Alectryon excelsus</i>	6
Daventry Street	<i>Hymenosporum flavum</i>	5
Derwent Street	<i>Meryta sinclairii</i>	7
Dexter Avenue	<i>Prunus sp.</i>	4
Ennismore Road	<i>Alectryon excelsus</i>	7
Ethel Street	<i>Prunus sp.</i>	10
Euston Road	<i>Pittosporum eugenioides</i>	12
Fourth Avenue	<i>Sophora microphylla</i>	31
Fowlds Avenue	<i>Alectryon excelsus</i>	11
Harbutt Avenue	<i>Metrosideros excelsa "Mistral"</i>	4
Haverstock Road	<i>Melia azedarach</i>	12
Hazelmere Road	<i>Metrosideros excelsa "Mistral"</i>	2
Huntingtree Avenue	<i>Podocarpus totara</i>	6
Johnstone Street	<i>Dodonea viscosa</i>	7
Kingsview Road	<i>Prunus sp.</i>	4
Lambeth Road	<i>Alectryon excelsus</i>	16
Lloyd Avenue	<i>Prunus sp.</i>	5
Lorraine Avenue	<i>Magnolia sp.</i>	7
Marne Road	<i>Sophora chathamica</i>	4
Maryland Street	<i>Pittosporum crassifolium</i>	7
McDonald Street	<i>Sophora chathamica</i>	6
Moa Road	<i>Griselinia lucida</i>	23
Mountain View Road	<i>Prunus sp.</i>	17
Parkdale Road	<i>Alectryon excelsus</i>	7

d) Albert-Eden Park and Street Tree Planting Opportunities (continued)

Streets/Road Reserve Planting Opportunities *continued*

Name	Tree Species	Potential Planting Opportunities
Parry Street	<i>Alectryon excelsus</i>	5
Pencarrow Avenue	<i>Sophora chathamica</i>	10
Prospero Terrace	<i>Prunus</i> sp.	4
Rama Road	<i>Alectryon excelsus</i>	7
Rawalpindi Street	<i>Melia azedarach</i>	8
Riro Street	<i>Melia azedarach</i>	7
Saxon Street	<i>Alectryon excelsus</i>	6
Segar Avenue	<i>Vitex lucens</i>	12
Tasman Avenue	<i>Vitex lucens</i>	10
Taylor's Road	<i>Sophora chathamica</i>	12
Vancouver Avenue	<i>Prunus</i> sp.	5
Vinter Terrace	<i>Alectryon excelsus</i>	2
Walker Road	<i>Leptospermum 'Coppersheen'</i>	7
Watea Road	<i>Alectryon excelsus</i>	10
Willcott Street	<i>Michelia doltsopa</i>	14

e) Planting Examples

Tree Pit Planting



Park Planting

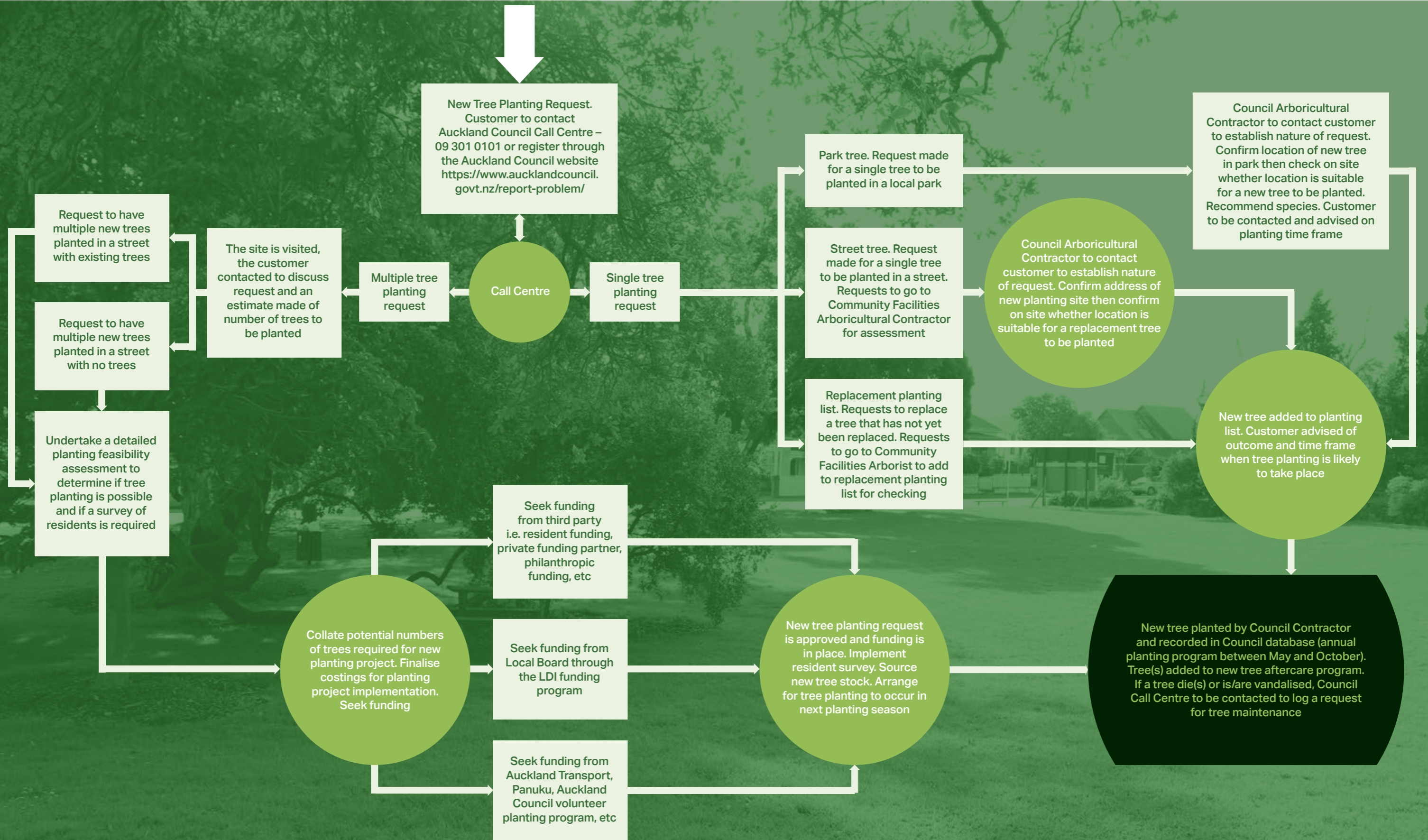


Berm Planting

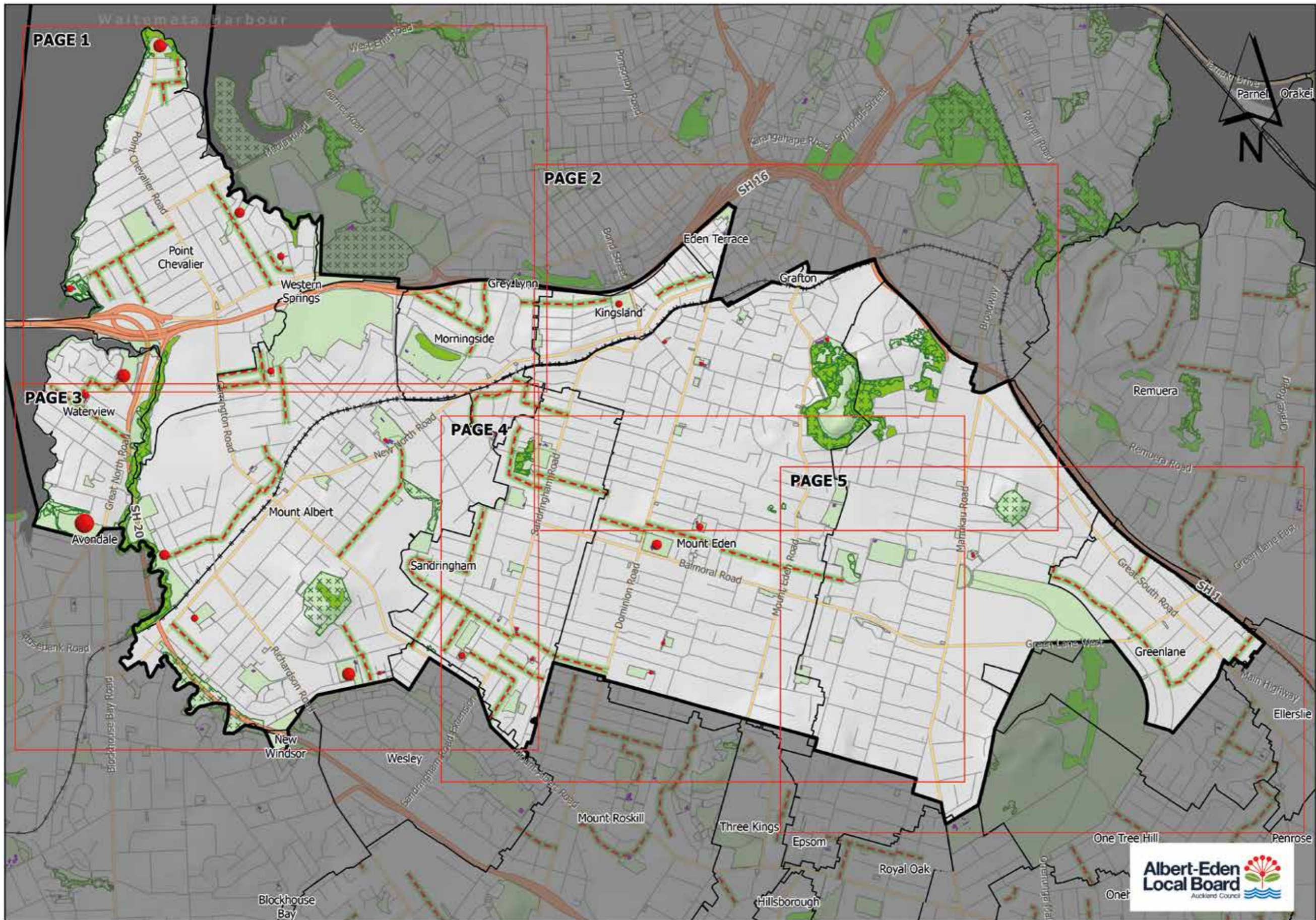


Image 3: Point Chevalier Beach

f) Auckland Council Tree Planting Request Process



g) Local Board Overview Map



h) Suggestions For Public Planting Sites

Please detail planting opportunities within parks and on streets under the following maps. Refer to appendices C for larger maps of individual areas. Once completed, please forward your suggestions to www.aucklandcouncil.govt.nz/report-problem.



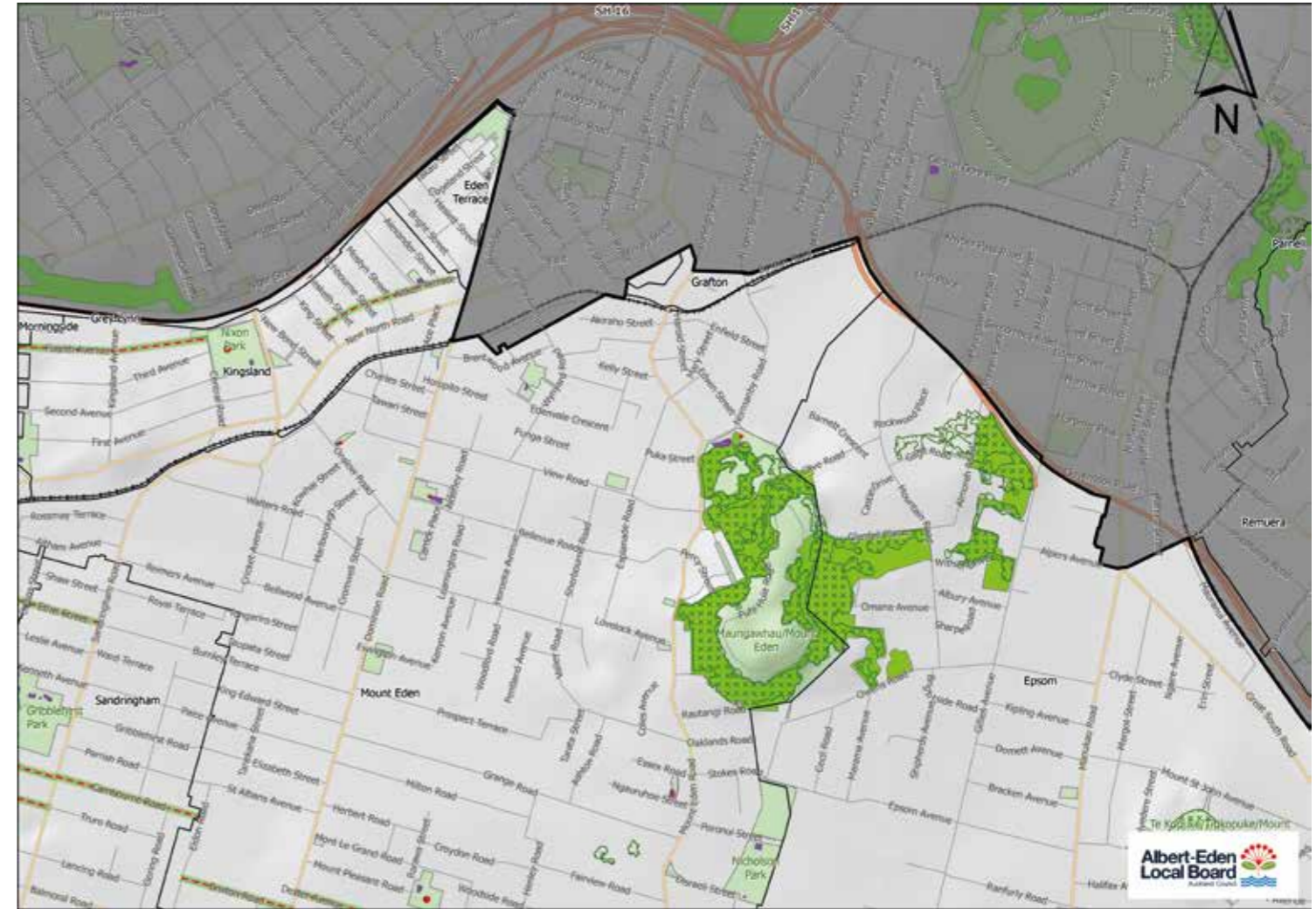
1

2

3

4

5



1

2

3

4

5

h) Suggestions For Public Planting Sites



1

2

3

4

5



1

2

3

4

5

h) Suggestions For Public Planting Sites



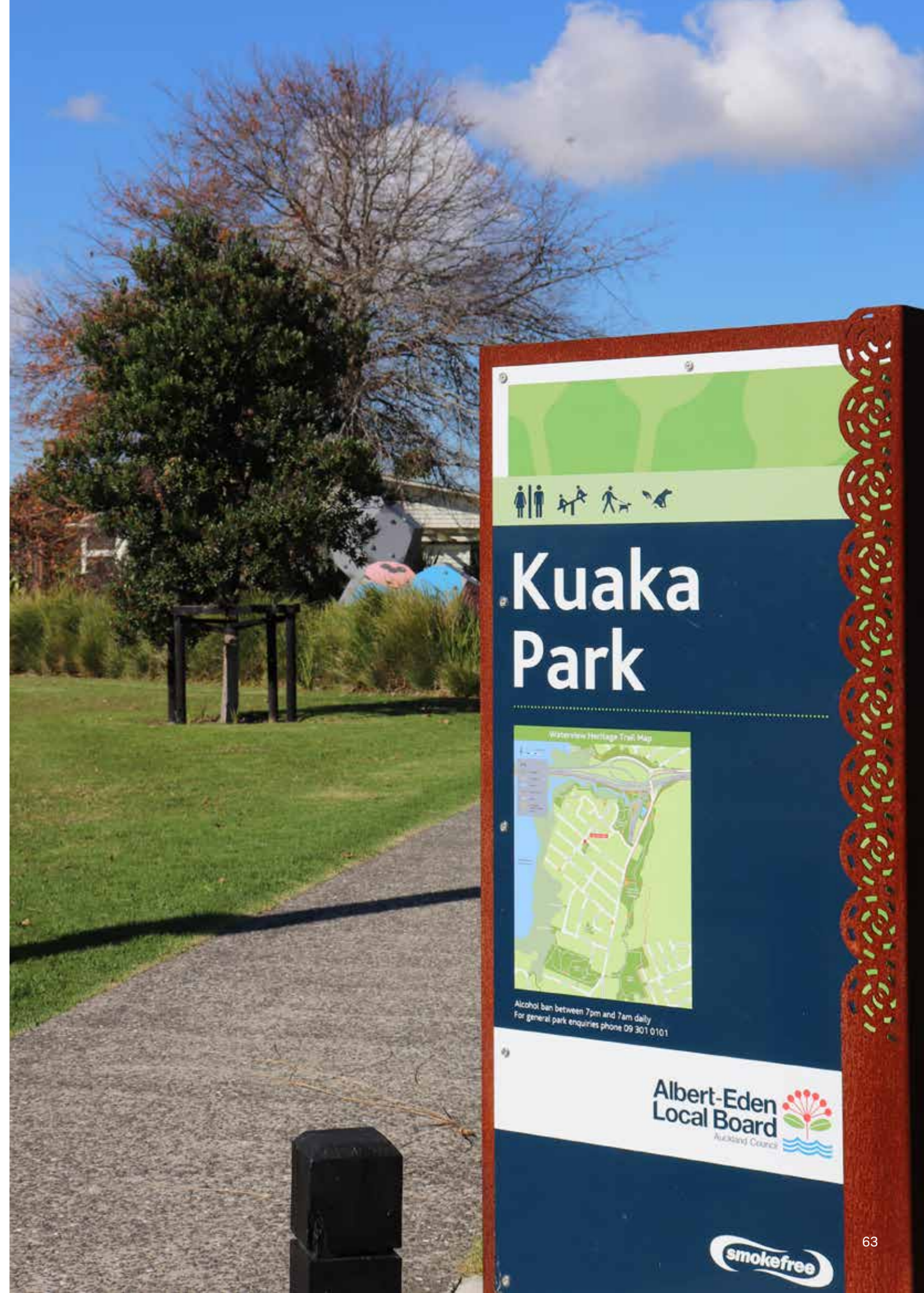
1

2

3

4

5



Printed on paper made
from 100% recycled
post-consumer waste.

