

Hibiscus and Bays Local Board Workshop Programme

Date of Workshop: Tuesday 12 September 2023
Time: 10:30am – 1:30pm
Venue: Local board office – 2 Glen Road, Browns Bay
Apologies:

Item	Time	Workshop Item	Presenter	Governance role	Proposed Outcome(s)
		Welcome and apologies	Gary Brown - Chairperson		
1.	10:30am	<p>Mairangi Bay Future Management Proposals</p> <p>Attachment:</p> <ul style="list-style-type: none"> • Presentation: Mairangi Bay Beach Reserves Future Management Proposals 	<p>Matt Woodside Parks and Places Specialist</p> <p>Tommo Cooper-Cuthbert Service and Asset Planner</p>	Local initiatives and specific decisions	Discuss the pedestrianisation of part of Montrose Terrace and seek local board support to progress this proposal.
2.	11:00am	<p>Activation of parks, places and open spaces in 2022/2023 (SharePoint ID#1012) and draft 2023/2024 programme</p> <p>Attachments:</p> <ul style="list-style-type: none"> • Memo: Hibiscus and Bays Activations Summary 2022/2023 • Hibiscus and Bays activations delivered 2022/2023 • Hibiscus and Bays draft activations programme 2023/2024 • Presentation: Hibiscus and Bays Activations 2022/2023 	<p>Sanjeev Karan Activation Team Manager</p> <p>Geraldine Wilson Activation Advisor</p>	Keeping informed	Receive a summary of activations for 2022/2023 and provide feedback for the 2023/2024 draft programme.
	11:30am	BREAK			

3.	12:00pm	I&ES work programme: flooding actions (response) Attachment: <ul style="list-style-type: none"> • Presentation: Taiāotea, Mairangi Bay and Red Beach catchments 	Nicolas Vigar Head of Planning Brandii Stephano Relationship Advisor	Keeping informed	Provide a response to actions raised in local board business meetings in 2023.
4.	12:45pm	Healthy Waters introduction Attachment: <ul style="list-style-type: none"> • Presentation: Restoring waterways 	Rita Kpodonu Senior Healthy Waters Specialist Anna Halliwell Healthy Waters Specialist Brandii Stephano Relationship Advisor	Keeping informed	Re-introduce the local board to the Healthy Waters department.
5.	1:00pm	Storm Recovery work programme proposal (NON-PUBLIC)	Brandii Stephano Relationship Advisor		
	1:30pm	Workshop concludes			

Role of workshop:

- (a) Workshops do not have decision-making authority.
- (b) Workshops are used to canvass issues, prepare local board members for upcoming decisions and to enable discussion between elected members and staff.
- (c) Workshops are not open to the public as decisions will be made at a formal, public local board business meeting.
- (d) Members are respectfully reminded of their Code of Conduct obligations with respect to conflicts of interest and confidentiality.
- (e) Workshops for groups of local boards can be held giving local boards the chance to work together on common interests or topics.

Mairangi Bay Beach Reserves Future Management Proposals



Purpose of today's workshop

1. Revisit the proposal for closing off Montrose Terrace through the reserve, as set out in the 2015 Mairangi Bay Reserves Management Plan
2. Discuss a current opportunity to progress this proposal in combination with Watercare, Auckland Transport and Auckland Council Parks and Community Facilities
3. Seek direction from the local board on whether staff should pursue this opportunity at this time

Context

1. Existing reserve layout
2. 2015 Mairangi Bay Reserves Management Plan concept plan
3. Coastal inundation and anticipated areas of susceptible erosion
4. Items in and out of scope of Management Plan review
5. Current Watercare project and pedestrianisation opportunity
6. Table of Pros and Cons around current opportunity
7. Discussion and feedback

Existing site

Source: Auckland Council GIS 2022



Section of Montrose Terrace we are proposing for closure

Reserve area occupied by Watercare

2015 RMP concept plan



LEGEND

- 01 Existing walkway (segment of Te Araroa walkway)
- 02 Beach access
- 03 Carpark - time restricted
- 04 Carpark
- 05 Buffer planting
- 06 Low speed road to connect existing roads
- 07 Road bridges around existing pohutukawa
- 08 Proposed lease area for surf lifesaving club - storage facility
- 09 Scheduled notable trees
- 10 Beach promenade
- 11 Public plaza over underground storage area (underground storage area proposed lease area for surf lifesaving club)
- 12 Proposed lease area for surf lifesaving club - new building footprint and lease area to include kiosk, public toilet and changing facilities
- 13 Existing bridge upgraded
- 14 Existing walkway - Forde Way (segment of Te Araroa walkway)

- Existing vegetation
 - AH - Araucaria heterophylla - Norfolk Island Pine
 - ME - Metrosideros excelsa - Pohutukawa
 - PC - Phoenix canariensis - Canary Island Date Palm

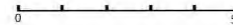
- Existing vegetation - proposed for removal

- New trees
- Vehicle barriers
- Existing sea wall
- Retaining wall
- Boat ramp
- Proposed lease area for surf lifesaving club

- Area being investigated for Watercare infrastructure (including underground assets)

- Building footprint waste water pumping station

CARPARK PROVISION	Existing	Proposed Option A
Carpark Spaces within extent of reserve	35	44



Mairangi Bay beach reserves concept plan

Areas susceptible to coastal erosion



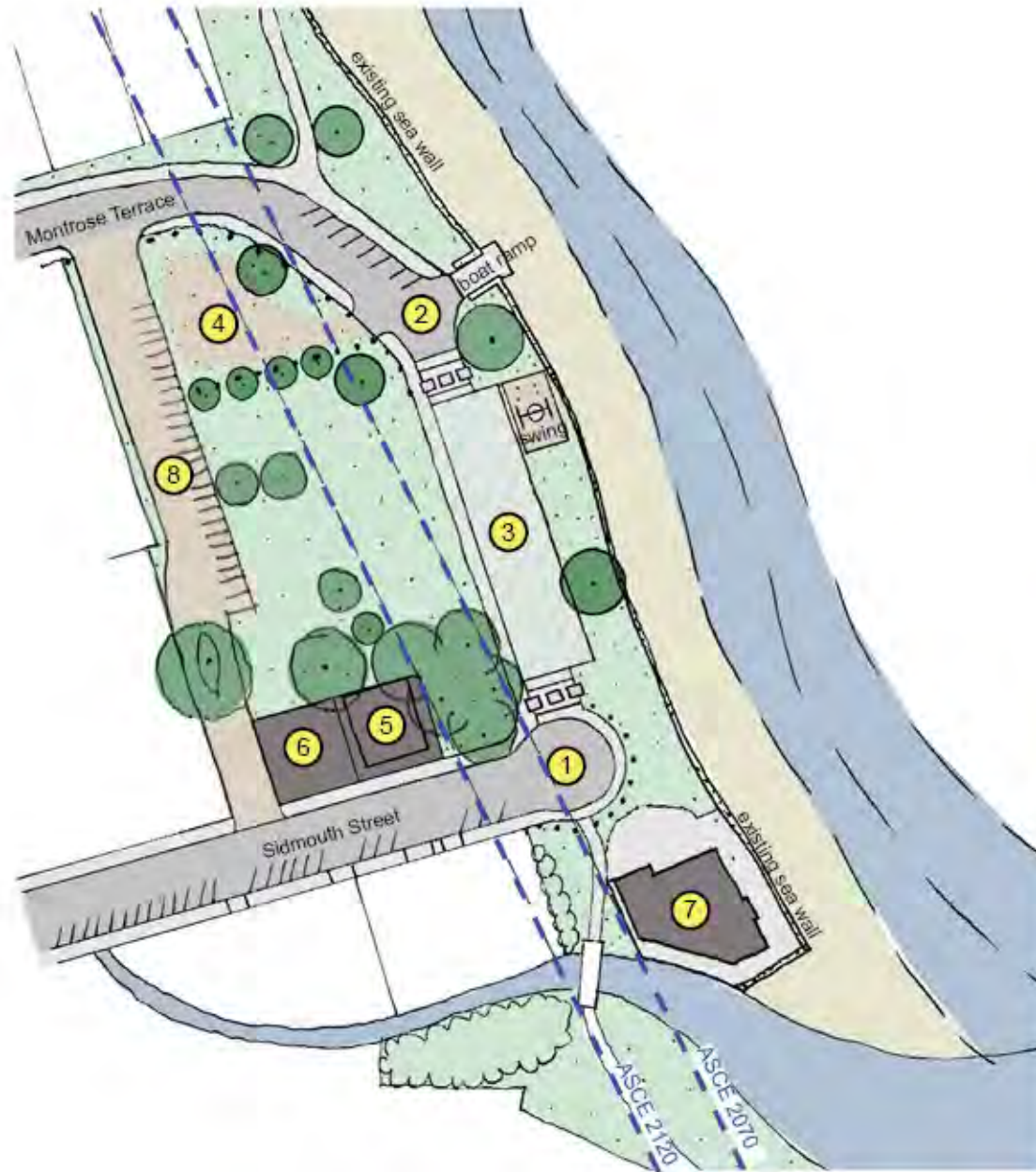
2015 Mairangi Bay Reserves Management Plan concept, overlaid with erosion susceptibility layers for the next 50 and 100 years

Source: Tonkin and Taylor Shoreline Management Options Report 2022

Scope of the current RMP plan variation

In scope	Out of Scope
The location of the surf club building	Future layout of Montrose Terrace (decision made under Mairangi Bay Reserves Management Plan 2015)
Surf club storage (on reserve currently)	Watercare buildings and infrastructure
The location of coastal structures such as sea walls	
Car parking	
Parks assets and play facilities	
Beach access	

Current pedestrianisation opportunity



STAGE 1 PROPOSALS

This plan is a discussion document which communicates how the first stage of spatial changes identified in the Mairangi Bay Reserve Management Plan (2015) could be progressed.

Key considerations include:

- ① Close the end of Sidmouth Street and convert it to a cul-de-sac configuration
Watercare, AT, AC & Hibiscus and Bays Local Board input required
- ② Close off Montrose Terrace near the existing boat launching ramp
AT, AC & Hibiscus and Bays Local Board input required
- ③ Existing car parking on Montrose Terrace to become public open space. Could be retained as hardstanding in the short term for placemaking activities, street activations and temporary play experiences. Re-work to a park like landscape when funding becomes available.
AC, AT & Hibiscus and Bays Local Board input required
- ④ Existing overspill car parking on lawn and gravel surface. Retain in current format for weekend and event parking
AC & Hibiscus and Bays Local Board input required
- ⑤ New Watercare building on southern side of reserve
Watercare - AC agreement in place in relation to current works
- ⑥ Temporary storage area for surf club containers to be located at the rear of the reserve
Mairangi Bay Surf Club, Watercare, AC agreement in progress
- ⑦ Existing Surf Club building
New location will be consulted on during the Reserve Management Plan
- ⑧ Proposed road connecting Sidmouth Street with Montrose Terrace at the rear
AT, AC & Hibiscus and Bays Local Board input required

ASCE 2070 Area susceptible to coastal erosion 2070

ASCE 2120 Area susceptible to coastal erosion 2120

Pros and cons of the proposal

PROs	CONs
Net increase in public open space at Mairangi Bay Beach Reserve	Increased demand on temporary overspill car parking area at northern end of reserve
Proposal will create a seamless interface between the reserve land and the beach environment	No through traffic in short to medium term
Opportunity to realise a key part of the 2015 RMP at a shared cost with CCOs	Park presentation may be non-optimal in the short term until road area is reinstated with lawn and soft landscaping
Alignment with coastal engineering advice on the set back of coastal asset - 'managed retreat' strategy	
In the short term will provide additional space for community and play activations, surf club activities etc.	
Continuity and improvement of current reserve use – no decrease in recreational outcomes. Boat ramp and beach access points remain usable	

Discussion and local board member feedback



Memorandum

12 September 2023

To: Hibiscus and Bays Local Board

Subject: Activation of parks, places and open spaces in 2022/2023 (SharePoint ID#1012) and draft 2023/2024 programme

From: Sunny Karan, Activation Manager, Active Communities

[REDACTED]

[REDACTED]

[REDACTED]

Purpose

1. To provide a summary of the Activation of parks, places and open spaces programme delivered in 2022/2023 (SharePoint ID#1012).
2. To seek feedback on the draft Activation of parks, places and open spaces programme in 2023/2024.

Summary

3. In 2022/2023, the Hibiscus and Bays Local Board allocated \$45,000 LDI OPEX to enable and coordinate a range of 'free to attend' activities and events that support the local community to be physically active, either through the Out and About programme or other locally focused community or partner organisations and initiatives.
4. Fifty-eight activations were delivered across 14 locations with 2018 attendees.
5. Despite numerous postponements and cancellations due to adverse weather events, the programme was fully delivered.
6. Participant feedback was collected via a survey which was conducted across a range of activations and locations.
7. Ninety-eight per cent of surveyed participants were either satisfied or very satisfied and 59 per cent were first time attendees.
8. Hibiscus and Bays Local Board was one of 15 local boards that provided an Activation programme across Tāmaki Makaurau during 2022/2023.
9. Overall, 936 activations were attended by 28,977 participants in 174 locations across Tāmaki Makaurau.
10. The local board is allocating \$40,000 for the 2023/2024 Activation programme.
11. A draft programme has been prepared for 2023/2024 for local board feedback in **Attachment B**.

Context

12. The 2022/2023 work programme included \$45,000 LDI OPEX for delivery of the activation of parks, places and open spaces (SharePoint ID #1012)

13. **Attachment A** outlines the activations delivered for Hibiscus and Bays Local Board in 2022/2023.
14. As a result of severe weather events experienced during the year some activations were rescheduled or occasionally cancelled. Affected activations were able to be delivered later in the year.
15. The allocated budget was spent, and the activation programme was fully delivered with 58 activations across 14 locations with a total of 2018 attendees.
16. Activations were delivered by a range of delivery partners.
17. The activation of parks, places and open spaces programme delivers on the following local board plan outcomes.
 - Outcome one: A connected community.
 - Outcome four: Open spaces to enjoy.
18. The programme also delivers on activity benefits from the local board’s work programme to support the following outcomes.
 - More Aucklanders living healthy, active lives through play, active recreation and sport.
 - More Aucklanders connecting to nature.
 - More Aucklanders connecting to our unique Māori identity.

Discussion

Activations in the 2023/2024 Hibiscus and Bays Local Board work programme

19. With a reduced budget of \$40,000 for 2023/2024, staff are seeking direction from the local board on what their expected outcomes are from Activations programme so we can refine the programme accordingly.
20. A draft suite of activation themes is outlined in **Attachment B**. This attachment outlines all the activations of parks, places and open spaces in the current programme. Once staff have received feedback on the options below a draft programme will be developed and presented at a later workshop for discussion.

Option A	Higher attendance numbers - more generic activations and less specialised.
Option B –	More specialised activations/targeted communities with less generic activations– attendance may not be as high
Option C (Status quo)	Combination of both Options A and B – Attendance numbers will be approximately the same as previous years.

21. **Option A : More generic activations and less specialised - higher attendance numbers**
 The Activation team has worked with various delivery partners over several years to bring the community a variety of activations. Therefore, we know that generic activations such as Pop-Up Obstacle Course, Hungerball and Pop Up Play Stations and Kiwi Bubble Soccer, group fitness have higher attendance numbers.

22. **Option B: More specialised activations/targeted communities with less generic activations – attendance may not be as high**

Specialised activations that require registration or numbers to be capped for a better experience are lower in attendance but provide experiences for the community to participate in activities they wouldn't otherwise do. These include activations such as nature play, girls skate classes and Ako Hoe Waka, kayaking and stand up paddleboarding.

23. **Option C (Status quo): Combination of both Options A and B** – Attendance numbers will be approximately the same as previous years.

24. Staff recommend the board support Option C.

25. Staff recommend that the specialised activations mentioned below are retained for the reasons outlined. These activations can be delivered in all options. The number of these activations can be reviewed if supported by the local board and can be complemented by some generic activations.

Activations that celebrate Māori cultural identity

26. The delivery of Māori outcomes is a priority for Auckland Council. Local board funded work programmes which include the Activations programme present an opportunity to bring this priority to life.

27. Staff have actively sought to engage delivery partners who can support Māori outcomes. For the last financial year this included the delivery of Ako Hoe Waka, and Ako Kēmu Māori as well as other activations that incorporate specific elements of mātauranga (knowledge) Māori in their delivery.

28. These activations provide tangible and accessible opportunities for whānau and community to engage with te reo, tikanga, and mātauranga Māori in our local parks, spaces and places.

29. Staff are proposing to continue to engage delivery partners who can support the ongoing delivery of Māori outcomes and welcome any feedback from the local board at the workshop when the draft programmes is presented.

Activations that remove barriers for women and girls

30. Research shows that women and girls are typically less active than their male counterparts but want to participate more. The Activation team has sought to address this by finding new delivery partners who can deliver female friendly activations.

31. For the last financial year this included the delivery of skateboarding, gymnastics and BMX activations led by female instructors in a female-only environment to encourage participation.

32. It is recommended that some activations specific for women and young girls are once again supported.

Marketing and Promotion

33. Participant survey data indicates that online advertising such as Facebook and Eventbrite continue to be the main source of where attendees see activations advertised. Recent changes to Facebook and Instagram's algorithm prioritises dynamic videos and reels over static images. In 2023/2034, delivery partners will be required to take short action videos of each activation. These will be used as a marketing and promotional tool to help increase and maintain programme engagement and attendance numbers.

34. Schools can be approached asking for support in marketing and promoting local board activations. Some schools did support the programmes in 2021/2022, however at the time they were prioritising communication with parents about COVID.

35. Printed material such as flyers and posters are not ideal as they become outdated as soon as there are changes to the programme. With two seasons of COVID related interruptions and severe weather events this summer, staff do not recommend printing flyers in 2023/2024.
36. This year, staff posted individual local board schedules on the Auckland Leisure Network website. (<https://aucklandleisure.co.nz/out-about-auckland/>) including the full schedule for the April school holidays. The community can download these for their own local board, and they are updated regularly to account for any cancelled activations that are then rescheduled. As Active Communities operate the Auckland Leisure website, any changes and updates can be made more efficiently than using other platforms, such as Our Auckland.

Activation programme analysis - Participant Survey Data 2022/2023.

37. Figures one to six provide details about some of the key data the activation team have collected from attendees.

Figure 1: Reasons for people attending activations

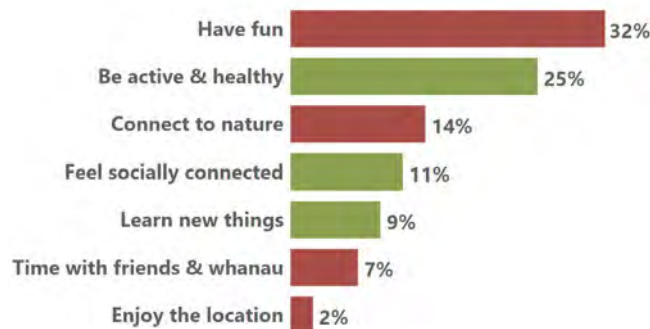


Figure 2: Percentage of people who were first time attendees vs have attended before

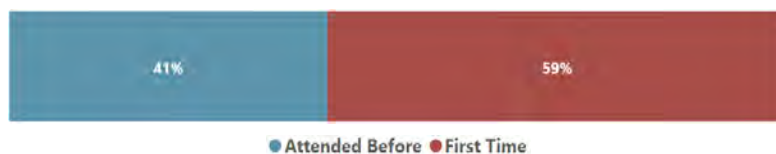


Figure 3: Who attendees attended with

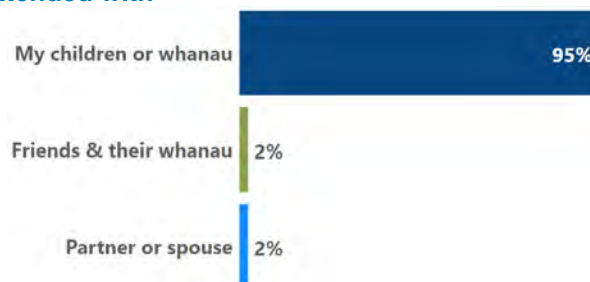


Figure 4: How did attendees hear about the activation

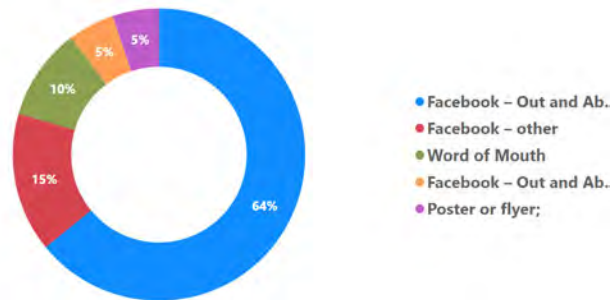


Figure 5: Ethnicity of attendees

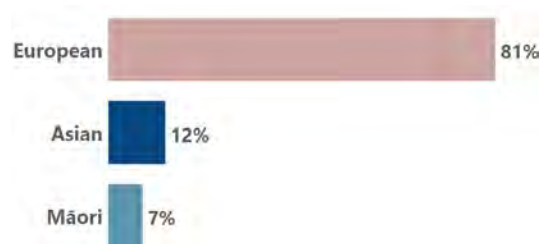


Figure 6: Attendee satisfaction with the activation



38. Overall, the successful delivery of the local board’s activation programme was well received by the community.
39. Ninety-eight per cent of surveyed participants being either satisfied or very satisfied with the programme exceeded the Activation team’s goal of 85 per cent.

Next steps

40. The local board to provide direction on which option they support, which will indicate to staff which activations to include in the draft programme.
41. Staff would like to know the local board’s intended option at this workshop or via email from local board advisors by the end of September 2023 so planning can commence for 2023/2024.
42. Staff will prepare the draft programme to present at a workshop in October 2023. Any feedback received will help to finalise the programme.
43. A finalised activation schedule will be provided to the local board in via a memo before delivery commences.
44. Delivery will commence in late 2023 and activations will take place until March/April 2024.
45. Regular updates will be provided to the board throughout the year, with an annual summary provided in Q1 2024.

Attachments

Attachment A: Activations delivered in 2022/2023

Attachment B: Draft programme 2023/2024

Attachment C: Activations slideshow for 2022/2023

Attachment A – Hibiscus and Bays Local Board Activations delivered 2022/2023

Date	Activation	Location	Time	Delivered By
Thursday, 6 October 2022	Flying Fun in the Park_Kite Day	Stanmore Bay Park	10:00 - 12:00	CLM
Monday, 24 October 2022	Hungerball	Browns Bay	10:00 - 14:00	Hungerball New Zealand
Saturday, 12 November 2022	Hungerball	Western Reserve	10:00 - 14:00	Hungerball New Zealand
Saturday, 26 November 2022	Wild Families Nature Network	Centennial Park	09:00 - 13:00	Craft Lab
Saturday, 26 November 2022	Wild Streets Festival of Play	Stanmore Bay Park	10:00 - 14:00	Open Fort
Friday, 2 December 2022	Hungerball	Orewa Beach	15:00 - 19:00	Hungerball New Zealand
Saturday, 3 December 2022	Yoga (Browns Bay)	Browns Bay	09:00 - 10:00	Selina Gilbert
Saturday, 3 December 2022	Yoga (Stanmore Bay)	Stanmore Bay Beach	09:00 - 10:00	Daphne Luke
Wednesday, 14 December 2022	Yoga (Mairangi Bay)	Mairangi Bay Reserve	18:00 - 19:00	Laura Mckenzie
Sunday, 18 December 2022	Wild Families Nature Network	Centennial Park	09:00 - 13:00	Craft Lab
Wednesday, 21 December 2022	Yoga (Mairangi Bay)	Mairangi Bay Reserve	18:00 - 19:00	Laura Mckenzie
Friday, 23 December 2022	Junk Play	Stanmore Bay Park	10:00 - 14:00	Conscious Kids
Saturday, 24 December 2022	Yoga (Stanmore Bay)	Stanmore Bay Beach	09:00 - 10:00	Daphne Luke
Wednesday, 28 December 2022	Yoga (Mairangi Bay)	Mairangi Bay Reserve	18:00 - 19:00	Laura Mckenzie
Wednesday, 4 January 2023	Yoga (Mairangi Bay)	Mairangi Bay Reserve	18:00 - 19:00	Laura Mckenzie
Wednesday, 11 January 2023	Girls Skate NZ Skateboard Clinic	Orewa Skatepark	10:00 - 12:00	Girls Skate NZ
Wednesday, 11 January 2023	Yoga (Mairangi Bay)	Mairangi Bay Reserve	18:00 - 19:00	Laura Mckenzie
Thursday, 12 January 2023	Tane's Tamariki	Stanmore Bay Park	09:30 - 11:30	Barefooted NZ
Saturday, 14 January 2023	Giant Stand Up Paddling Boarding	Orewa Beach	09:00 - 15:00	Sir Peter Blake Marine Ed & Rec Centre
Saturday, 14 January 2023	Kayaking	Orewa Beach	09:00 - 15:00	Sir Peter Blake Marine Ed & Rec Centre
Saturday, 14 January 2023	Yoga (Browns Bay)	Browns Bay	09:00 - 10:00	Selina Gilbert
Wednesday, 18 January 2023	Girls Skate NZ Skateboard Clinic	Stanmore Bay Skatepark	10:00 - 12:00	Girls Skate NZ
Wednesday, 18 January 2023	Tane's Tamariki	Stanmore Bay Park	09:30 - 11:30	Barefooted NZ
Wednesday, 18 January 2023	Yoga (Mairangi Bay)	Mairangi Bay Reserve	18:00 - 19:00	Laura Mckenzie
Saturday, 21 January 2023	Giant Stand Up Paddling Boarding	Browns Bay	09:00 - 15:00	Sir Peter Blake Marine Ed & Rec Centre
Saturday, 21 January 2023	Yoga (Browns Bay)	Browns Bay	09:00 - 10:00	Selina Gilbert
Saturday, 21 January 2023	Yoga (Stanmore Bay)	Stanmore Bay Beach	09:00 - 10:00	Daphne Luke
Saturday, 21 January 2023	Kayaking	Browns Bay	09:00 - 15:00	Sir Peter Blake Marine Ed & Rec Centre
Sunday, 22 January 2023	Circus in the Park	Orewa Beach	10:00 - 12:00	Circability

Attachment A – Hibiscus and Bays Local Board Activations delivered 2022/2023

Sunday, 22 January 2023	Circus in the Park	Stanmore Bay Park	14:00 - 16:00	Circability
Tuesday, 24 January 2023	Gymnastics in the Park	Stanmore Bay Park	10:00 - 12:00	North Harbour Gymnastics
Tuesday, 24 January 2023	Gymnastics in the Park	Orewa Beach	14:30 - 16:30	North Harbour Gymnastics
Wednesday, 25 January 2023	Yoga (Mairangi Bay)	Mairangi Bay Reserve	18:00 - 19:00	Laura Mckenzie
Wednesday, 25 January 2023	Browns Bay Wheels activation	Browns Bay	09:00 - 14:00	Wheels & Wellbeing
Wednesday, 1 February 2023	Yoga (Mairangi Bay)	Mairangi Bay Reserve	18:00 - 19:00	Laura Mckenzie
Saturday, 11 February 2023	Pop Up Play	Stanmore Bay Park	10:00 - 13:00	Pop up Play
Saturday, 11 February 2023	Yoga (Browns Bay)	Browns Bay	09:00 - 10:00	Selina Gilbert
Wednesday, 22 February 2023	Yoga (Mairangi Bay)	Mairangi Bay Reserve	18:00 - 19:00	Laura Mckenzie
Sunday, 26 February 2023	Junk Play	Mairangi Bay Reserve	09:00 - 13:00	Conscious Kids
Wednesday, 1 March 2023	Yoga (Mairangi Bay)	Mairangi Bay Reserve	18:00 - 19:00	Laura Mckenzie
Saturday, 4 March 2023	Yoga (Browns Bay)	Browns Bay	09:00 - 10:00	Selina Gilbert
Saturday, 4 March 2023	Yoga (Stanmore Bay)	Stanmore Bay Beach	09:00 - 10:00	Daphne Luke
Sunday, 5 March 2023	Giant Stand Up Paddling Boarding	Long Bay Regional Park	09:00 - 15:00	Sir Peter Blake Marine Ed & Rec Centre
Sunday, 5 March 2023	Kayaking	Long Bay Regional Park	09:00 - 15:00	Sir Peter Blake Marine Ed & Rec Centre
Wednesday, 8 March 2023	Yoga (Mairangi Bay)	Mairangi Bay Reserve	18:00 - 19:00	Laura Mckenzie
Saturday, 11 March 2023	Yoga (Stanmore Bay)	Stanmore Bay Beach	09:00 - 10:00	Daphne Luke
Sunday, 12 March 2023	Wild Streets Festival of Play	Orewa Beach	10:00 - 14:00	Open Fort
Wednesday, 15 March 2023	Tamariki Play	Browns Bay Beach Reserve	15:00 - 17:00	CLM
Saturday, 25 March 2023	Yoga (Browns Bay)	Browns Bay	09:00 - 10:00	Selina Gilbert
Saturday, 25 March 2023	Yoga (Stanmore Bay)	Stanmore Bay Beach	09:00 - 10:00	Daphne Luke
Monday, 27 March 2023	Hungerball	Browns Bay Beach Reserve	15:00 - 19:00	Hungerball New Zealand
Sunday, 2 April 2023	Wellness Riders Skateboard Clinic	Stanmore Bay Park	14:00 - 15:30	Wellness Riders
Saturday, 8 April 2023	Ako Hoe Waka	Stanmore Bay Beach	10:00 - 14:00	Mātātoa Time 2 Train
Tuesday, 11 April 2023	Junk Play	Orewa Beach	09:00 - 13:00	Conscious Kids
Sunday, 16 April 2023	Wellness Riders Skateboard Clinic	Stanmore Bay Park	14:00 - 15:30	Wellness Riders
Tuesday, 18 April 2023	Flying Fun in the Park_Kite Day	Ridge Park	10:00 - 12:00	CLM
Thursday, 20 April 2023	Pop Up Obstacle Course	Western Reserve	10:00 - 13:00	CLM
Saturday, 3 June 2023	Browns Bay Wheels activation	Browns Bay	09:00 - 15:00	Wheels & Wellbeing

Hibiscus and Bays Local Board – Attachment B - Proposed Draft Activations Programme for 2023/2024

Activation Theme	Activation name	Description	Location	Delivered By
Nature Play (Specialised Activation)	Wild Families	Develop new skills to connect your family with nature and foster a sense of kaitiakitanga.	Centennial Park, Stanmore Bay Park (Any park reserve with bush/trees/harakeke)	Craft Lab NZ
	Tāne's Tamariki	Tāne's Tamariki aims to enhance your local community's engagement with their local park-through play, exploration, and education. Attendees will learn about native flora and fauna, how to care for their natural surroundings, develop a sense of kaitiakitanga, and discover the beautiful park on their doorsteps - building your community's capability and capacity to utilise and engage with their local park.		Barefooted NZ
	Wild In Weather	Wild in Weather is a stand-alone programme that has been designed to adapt to whatever Tawharimatea may give us on the day. Ua (rain), hukātara (hail) or paki (sunny), lets get outside and see what amazing adventures we can have in te huarere (the weather). In Tāmaki Makaurau we need to enjoy and make the most of all types- as te huarere changes so does the opportunities for exploring. Like the saying goes, 'there is no such thing as bad weather just bad clothing,' and now it's time to meet the weather head on, to immerse our tamariki and get wild in weather.		Barefooted NZ
Te Ao Māori (Specialised Activation)	Ako Kēmu Māori (Games)	The Team from Mātātoa - Time 2 Train engage all ages when activating tākarō Māori (Māori Play). participants will be lead you through a number of kēmu (games) where they will learn		Mātātoa Time 2 Train.

Hibiscus and Bays Local Board – Attachment B - Proposed Draft Activations Programme for 2023/2024

Activation Theme	Activation name	Description	Location	Delivered By
		some basic reo (Māori language) and whakapapa (genealogy) and tikanga (customs), all delivered in Te Taiao (nature).		
Marine Based (Specialised Activation)	Ako Hoe Waka	Learn some basic reo, tikanga and paddling drills before hitting the moana on waka and working as a team.	Stanmore Bay Orewa Beach	Mātātoa Time to Train
	Kayaking	Community Kayaking	Long Bay Regional Park	Sir Peter Blake Marine Education Trust
	Kayaking, Stand-up paddle boarding, waka and sea education	Explore and learn about the coast and marine life	Shakespeare Regional Park Waiake Bay	Sir Peter Blake Marine Education Trust
Community Group Fitness (Generic Activations)	Yoga Stanmore Bay	Beach Yoga	Stanmore Bay	Daphne Luke
	Yoga Browns Bay	Beach Yoga	Browns Bay Beach	Selina Gilbert
	Yoga Mairangi Bay	Beach Yoga	Mairangi Bay	Laura McKenzie
Loose Parts/Messy Play (Specialised Activation)	Junk Play	Utilising a wide range of 'large loose parts' otherwise destined for landfill, we will design and construct our own play spaces, limited only by our imaginations.	Browns Bay	Conscious Kids Ltd
	Giant Mud Pie Kitchen/Clay in the Park	Create with clay and playdough using natural resources. Twigs for legs on your creature, leaves for candles on your cake, natural prints with leaves. *COLLECTED RAINWATER IS USED FOR THIS ACTIVATION*	Manly Park Orewa Beach Ridge Park Sherwood Reserve Stanmore Bay Park	Creative Kids Collective

Hibiscus and Bays Local Board – Attachment B - Proposed Draft Activations Programme for 2023/2024

Activation Theme	Activation name	Description	Location	Delivered By
	Cardboard Pop-up Playground	The kids are taking the lead as they discover and create, build, or deconstruct and watch their creations take shape using the resources any way they like. We will bring large cardboard boxes, cable reels, fabric, small loose parts, everyday household recycling and large junk items; all getting a new lease of life as the kids experience first-hand at rethinking rubbish.	Te Ara Tahuna Estuary Cycleway and Walkway Mairangi Bay Beach Stanmore Bay Beach Mairangi Bay Reserve Waiake Bay	Creative Kids Collective
Free Play (Generic Activations)	Pop up Play Stations	Find your passion for PLAY and have a go at multisports, dodgeball, tag and many more PLAY Stations for you to explore.	Orewa Skatepark	Pop Up Play
Free Play (Generic Activations)	Circus in the Park	Join the amazing Circus In The Parks team to play and learn circus skills like juggling, hula hoop, acrobatics, ribbons, and spinning plates. There will be something for everybody, all ages, all abilities!		Circability
	Wild Streets Festival of Play	Outdoor play, modified games, and problem solving/puzzles for all ages.		Open Fort NZ
	Hungerball	Hungerball can be played across multiple sports with battles of singles, doubles and triples played within a unique six-sided inflatable court. Hungerball games adaptations were developed for engaging groups of varying sizes and configurations, small or large, young, or mature, skilled, or unskilled.		Hungerball NZ
Girls Only/Female Friendly. (Specialised Activation)	Wellness Riders Skate Clinic – Learn to ride, balance with a female wellness element to session.	During this introductory session for mums and daughters you will learn the basics of skateboarding i.e., how to push, skate and cruise along on your board, alongside some new friends. You will also discuss the physical and mental wellness benefits of skateboarding.	Red Beach Beginners Path	Wellness Riders

Hibiscus and Bays Local Board – Attachment B - Proposed Draft Activations Programme for 2023/2024

Activation Theme	Activation name	Description	Location	Delivered By
	Girls Skate NZ - Skateboarding session at Skate Park	Learn to drop, ollie, develop confidence on skate parks/bowls.	Orewa Skatepark Stanmore Bay	Girls Skate NZ
	Gymnastics in the Park	Have a go and develop confidence using gymnastics equipment		Gym Kids
Mixed Skate/Bike Class (Boys and Girls) (Specialised Activation)	Young Guns Skate Class	For first time skaters and experienced skaters aged 5 and up. Classes are complemented by kids sized ramps and obstacles that are ideal for learning to skate on. Students will learn the correct techniques required for standing, pushing, turning and manoeuvring a skateboard. From there students learn the basic first tricks and begin to learn how to use a skatepark with proper etiquette ad safety,		Young Guns Skate School
	Wheels Activation	Wheels and wellbeing crew coach riders. - Live Demonstrations throughout the Activation. - Fundamentals of Bike Safety and Riding - Bike Checks, Brakes, Chain, Tyres for pre-existing bikes with public - Life Lessons with Riding, Skills and a Growth Mindset	Browns Bay	Wheels and Wellness
Silent Disco (Specialised Activation)	Silent Disco	Gear up with a pair of headphones and follow an interactive story. Get ready to play themed games, dance to a themed playlist and more importantly spot and play with one of the adventure characters. During the play session you will get immersed into the world of story that would unfold in front of your eyes. Different themes include, Christmas Special, Amazon Jungle, Minecraft Edition, Sea Odyssey plus more!	Browns Bay Manly Park Orewa Beach	Papaya Stories

Hibiscus and Bays Local Board – Attachment B - Proposed Draft Activations Programme for 2023/2024

Activation Theme	Activation name	Description	Location	Delivered By
(Generic Activations)	On Ya Wheels Treasure Hunt	Bring your scooter, bike, tricycle, pram, roller blade, wheelchair or unicycle and give our On Ya Wheels Treasure Hunt a go as a family. Follow the treasure map along the pathways, complete challenges and collect your treasure at the end.	Ridge Park Sherwood Reserve Stanmore Bay Park Te Ara Tahuna Estuary Cycleway and Walkway Mairangi Bay Beach	Community Leisure Management (CLM)
	Flying Fun in the Park	Make your own kite to fly and take home.	Stanmore Bay Beach	Community Leisure Management (CLM)
	Wacky Wheels	Try out a whole range of different 2, 3, and 4 wheels great for all ages and abilities, or bring your own and join in the fun! Mini courses, head along the pathways and enjoy all the Wacky Wheels on offer	Mairangi Bay Reserve Waiake Bay Orewa Skatepark	Community Leisure Management (CLM)
	Pop Up Obstacle Course	Are you the next Ninja Warrior? Jump, balance, crawl and throw your way through the Out and About obstacle course!! Perfect for young and old our course is the perfect way to burn off some energy these school holidays! One timeslot dedicated only for under 5's.		Community Leisure Management (CLM)
	Bubble Soccer	Soccer and modified games while wearing a giant zorb-like bubble		Kiwi Bubble Soccer



HIBISCUS AND BAYS LOCAL BOARD ACTIVATIONS 2022/2023

SANJEEV KARAN

ACTIVATION TEAM MANAGER



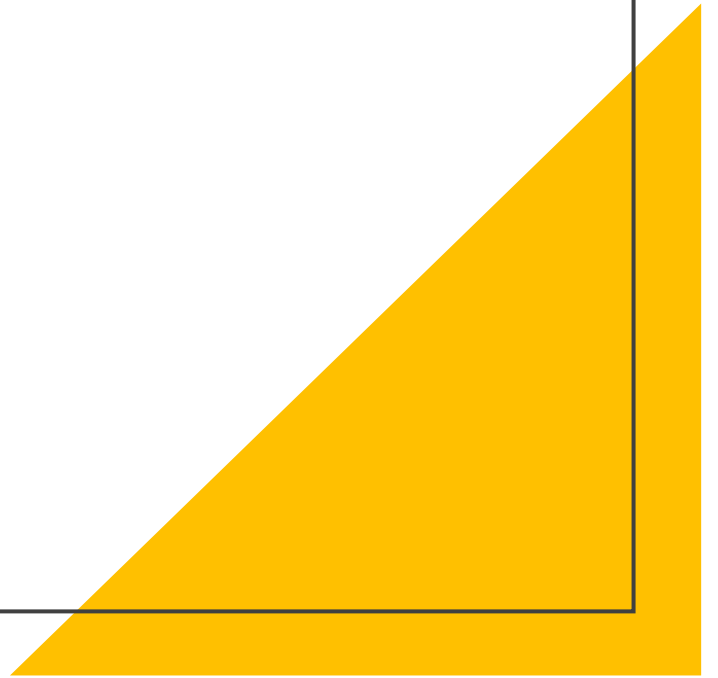






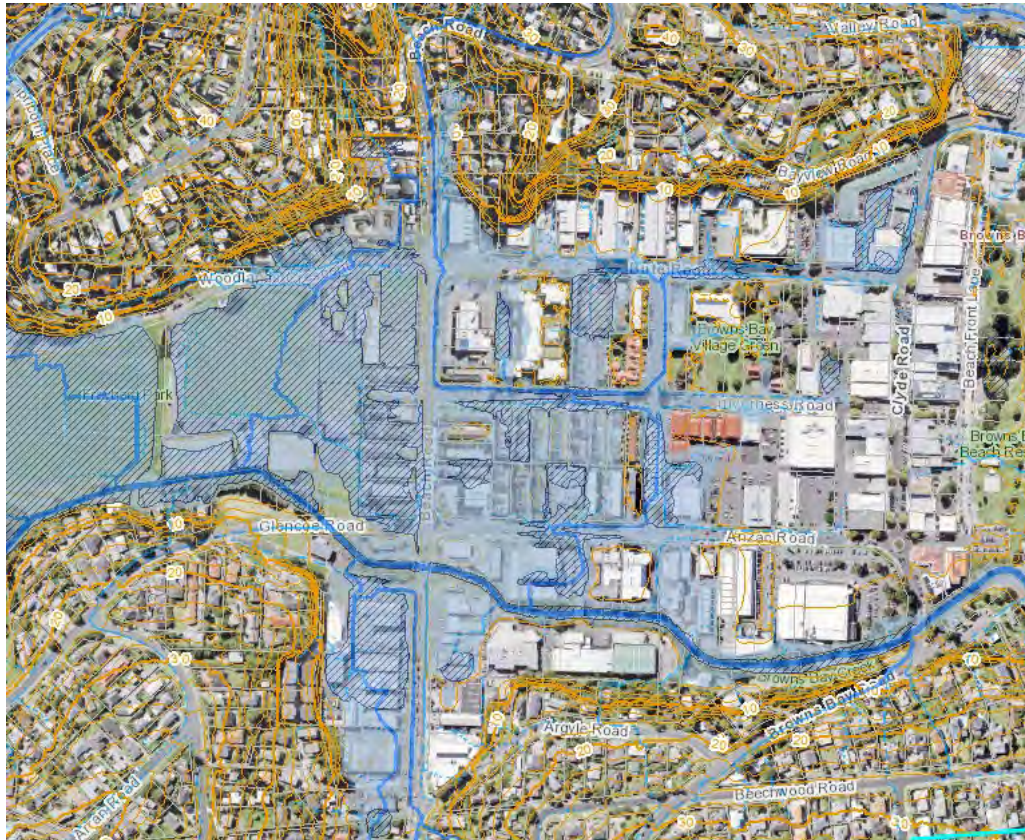
HBLB: Workshop Presentation

- Taiaotea Catchment (Browns Bay)
- Mairangi Bay Catchment
- Red Beach Catchment



The Taiāotea Catchment

Browns Bay Town Centre



Flood Hazards in the Taiaotea Catchment

Upper and mid catchment

- Steep terrain
- Flood hazards typically from overland flows when primary (pipe) system are overwhelmed
- Some flood prone areas where there are sole reliance on pipes to drain the area

Mitigation Options

- Awareness and better management of overland flow paths especially through private properties
- Awareness and flood resilience within flood prone areas
- Development controls along overland flow paths, flood plains if flows exceed $2\text{m}^3/\text{s}$ and flood prone areas
- Daylighting where space could be made available

***Note:** flood detention to attenuate peak flows is not feasible in these two segments of the catchment due to the absence of large, flat open spaces*

Lower catchment

- Flat, low ground levels (4m to 2m RL within town centre)
- Flood plain covers most of the town centre
- Pipe and stream outfalls to beach area subject to tidal tailwater and sand build up.
- Several flood prone areas with sole reliance on pipes with flat gradient and backwater effects from high tides
- Coastal inundation risk from storm tides + sea level rise affects large part of the town centre

Coastal Inundation ARI



Flood Mitigation Options Assessed

- **Option-1:** Raising bund level in Freyberg Park to 6m RL (1m higher), outlet reduced to 4m x 1.2m
- **Option 1B:** Raising bund level in Freyberg Park to 7m RL (2m higher), outlet reduced to 4m x 0.7m
- **Option-2:** Widening of Taiatea Stream Section to 2-3m from downstream of Beach Road Bridge to the beach
- **Option-3:** Raising bund level in the Lower Freyberg Park to 5.5m RL
- **Option-4:** Construct additional dam downstream of existing Sherwood Detention Pond with crest level
- **Option-5:** Widening of Taiatea Stream Section to 20m from downstream of Beach Road Bridge
- **Option-5A:** As in Option 5 but widen to 6m
- **Option-6:** 1200mm diameter pipe along the Beach Road from Woodlands Crescent to the stream.
- **Option-6A:** as in Option 6 but with 3m wide x 1.5m high rectangular conduit
- **Option-7:** 1200mm diameter pipe along the Glen Road from Bute Road to the stream.
- **Option-7A:** As in Option 7 but with 3m wide x 1.5m high rectangular conduit
- **Option-8:** 1800mm diameter pipe from 724 Beach Road to the stream.



Option-1

Option-3

Option-4

Option-6

Option-7

Option-2

Option-5

Option-8

VICORN PL

WOODLANDS CR

BUTE RD

BAYVIEW RD EAST

INVERNESS RD

GLENCOE RD

CLYDE RD

BEACH FRONT LANE

WILK LANE

ANZAC RD

BEACH RD EAST, COAST BAYS

ARGYLE RD

BROWNS BAY RD

RD

BEECHWOOD RD

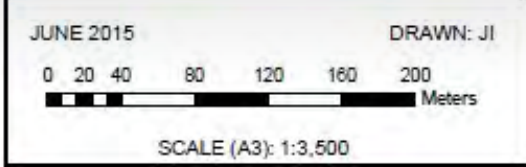
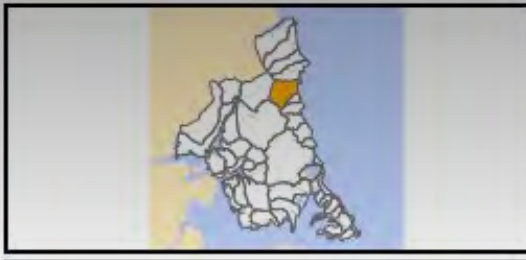
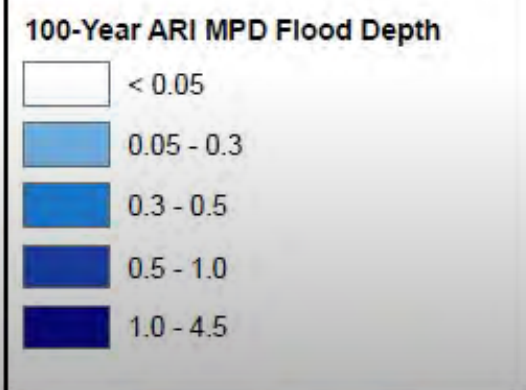
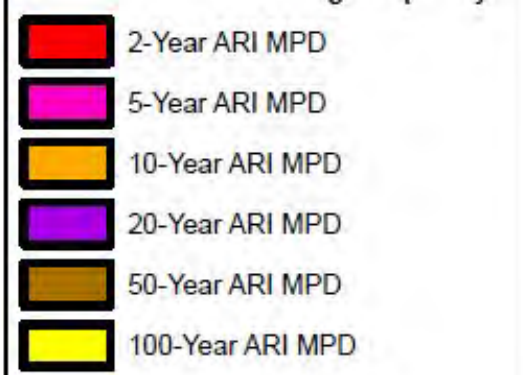
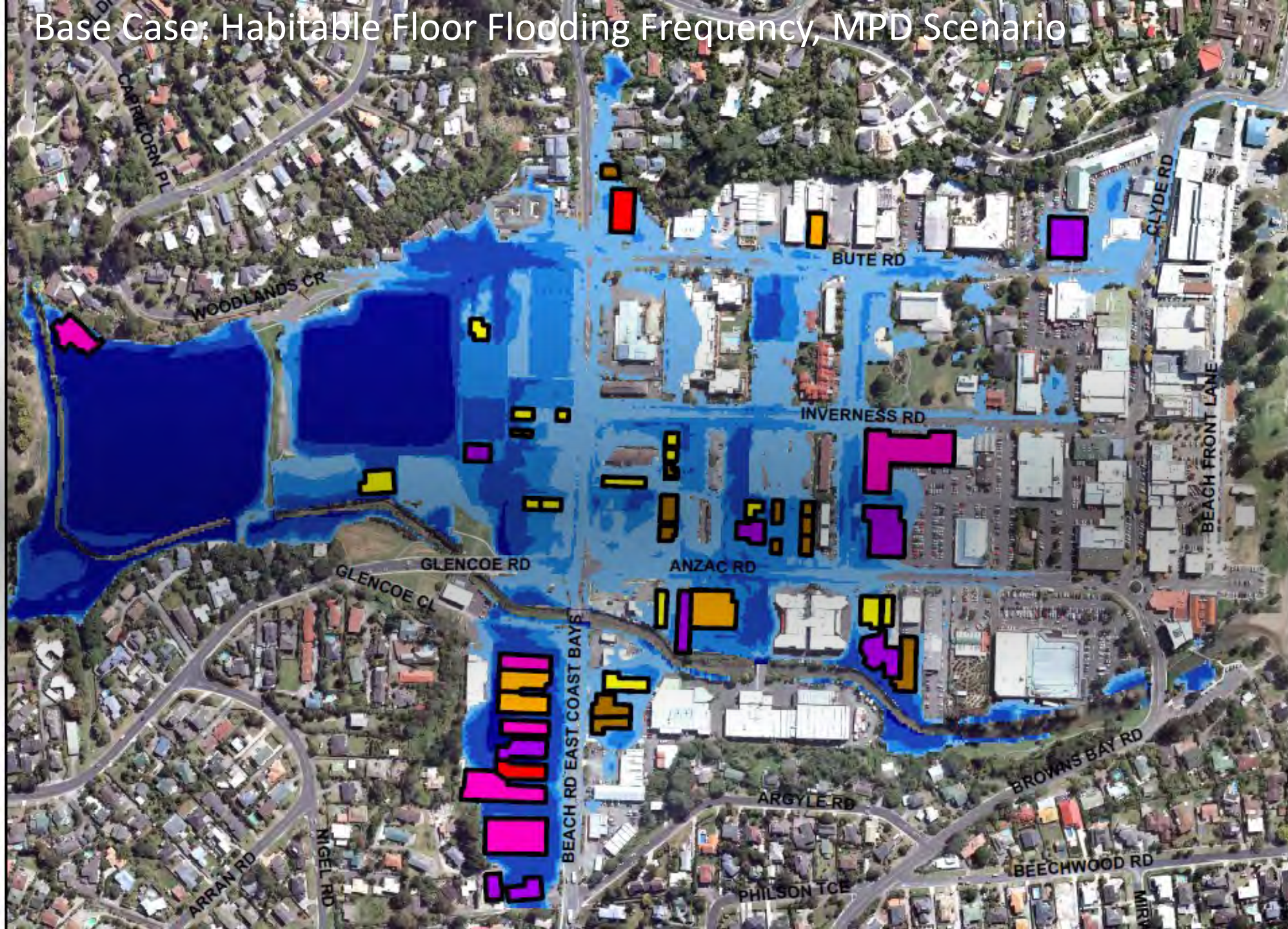
Comparison of Various Flood Mitigation Options

Options	Number of Habitable Floor Flooding	
	100-Year ARI (MPD Land Use/Future Rainfall)	10-Year ARI (MPD Land Use/Future Rainfall)
Base Case	77	13
Option-1A	51	-
Option-1B	39	13
Option-3	51	-
Option-4	41	-
Option-5	44	-
Option-5A	49	13
Option-6	76	-
Option-6A	60	-
Option-7	76	-
Option-7A	72	-
Option-8	75	10
Option-1B+3	39	-
Option-1B+5A	33	13
Option-1B+5A+8	31	10

Note:

- *Model runs for the 10-year ARI scenario were carried out for selected options.*
- *“-” denotes model run was not carried out*

Base Case: Habitable Floor Flooding Frequency, MPD Scenario



Option 1B + 5A: Habitable Floor Flooding Frequency, MPD Scenario



- 2-Year ARI MPD
- 5-Year ARI MPD
- 10-Year ARI MPD
- 20-Year ARI MPD
- 50-Year ARI MPD
- 100-Year ARI MPD
- >100-Year ARI MPD

100-Year ARI MPD Flood Depth

- < 0.05
- 0.05 - 0.3
- 0.3 - 0.5
- 0.5 - 1.0
- 1.0 - 4.8



JUNE 2015 DRAWN: JI

0 20 40 80 120 160 200 Meters

SCALE (A3): 1:3,500

Analysis of Modelling Results

- Best results is Option 1B +5A+8 with reduced flood frequencies
- Significant flood risks remains for all options assessed as shown in the comparison table and maps above
- Raising existing Freiburg Park bund by 2m would lead to much higher flood levels upstream, unacceptable upstream effects
- Modelling carried out based on low tide level of 0.5m
- Further modelling required based on current specification of using the Mean High Water Spring (MHWS) for the Existing Scenario and MHWS + 1m sea level rise for the future scenario.
- Options considered will be even far less effective if coincidence of the storm events with high tides is considered along with sea level rise
- Coastal inundation from storm tides not mitigated in any of the options considered

Overland flow flooding at Sandiacre Way / Stapleford Crescent

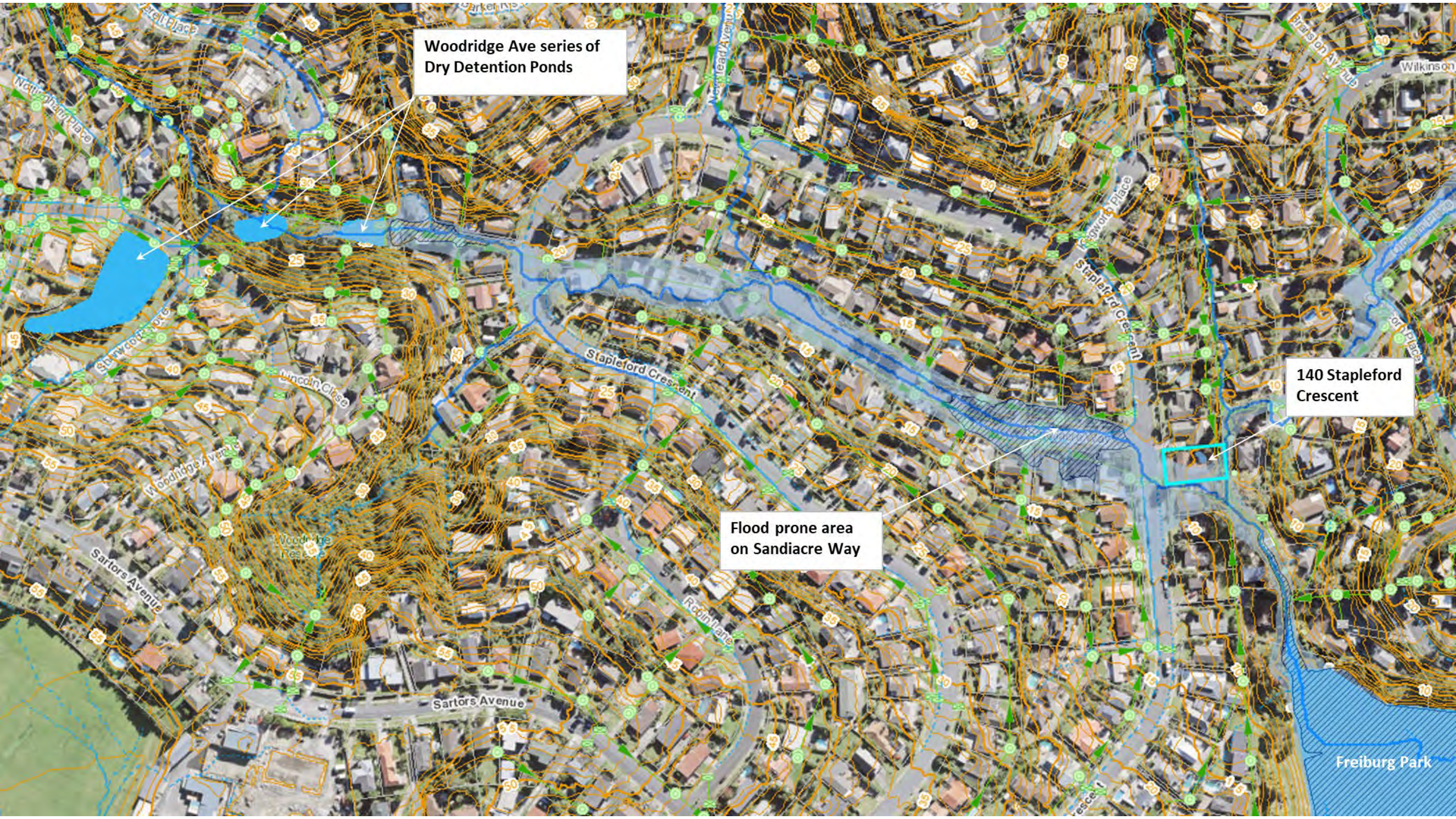
- In the 27 Jan event, the primary pipe system was overwhelmed with severe overland flows flooding along Sandiacre Way
- Flood prone area on Sandiacre Way formed by the higher road levels of Stapleford Crescent compared to Sandiacre Way
- Overland flows converging at the flood prone area spills across 140 and 142 Stapleford Crescent into the watercourse
- Assuming pipe system are blocked, the overland flow through #140 and #142 is about 18m³/s for the 100-year ARI event, future scenario



Woodridge Ave series of Dry Detention Ponds

140 Stapleford Crescent

Flood prone area on Sandiacre Way

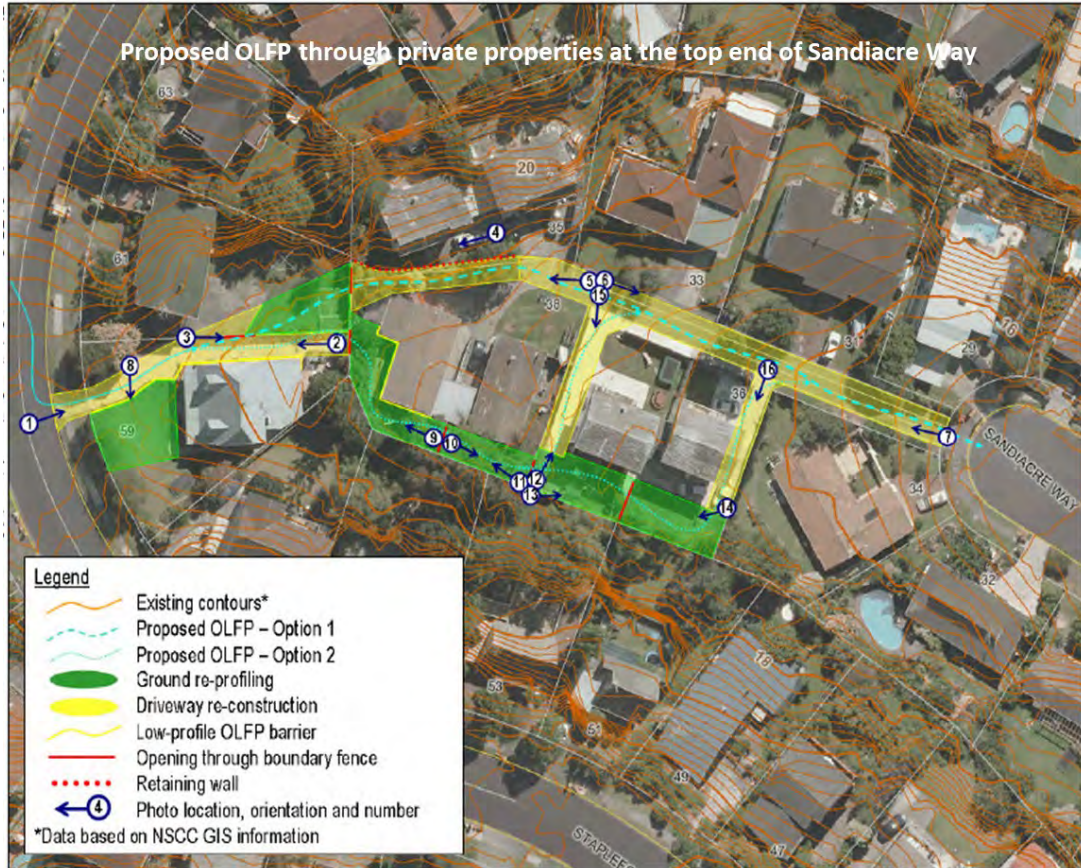


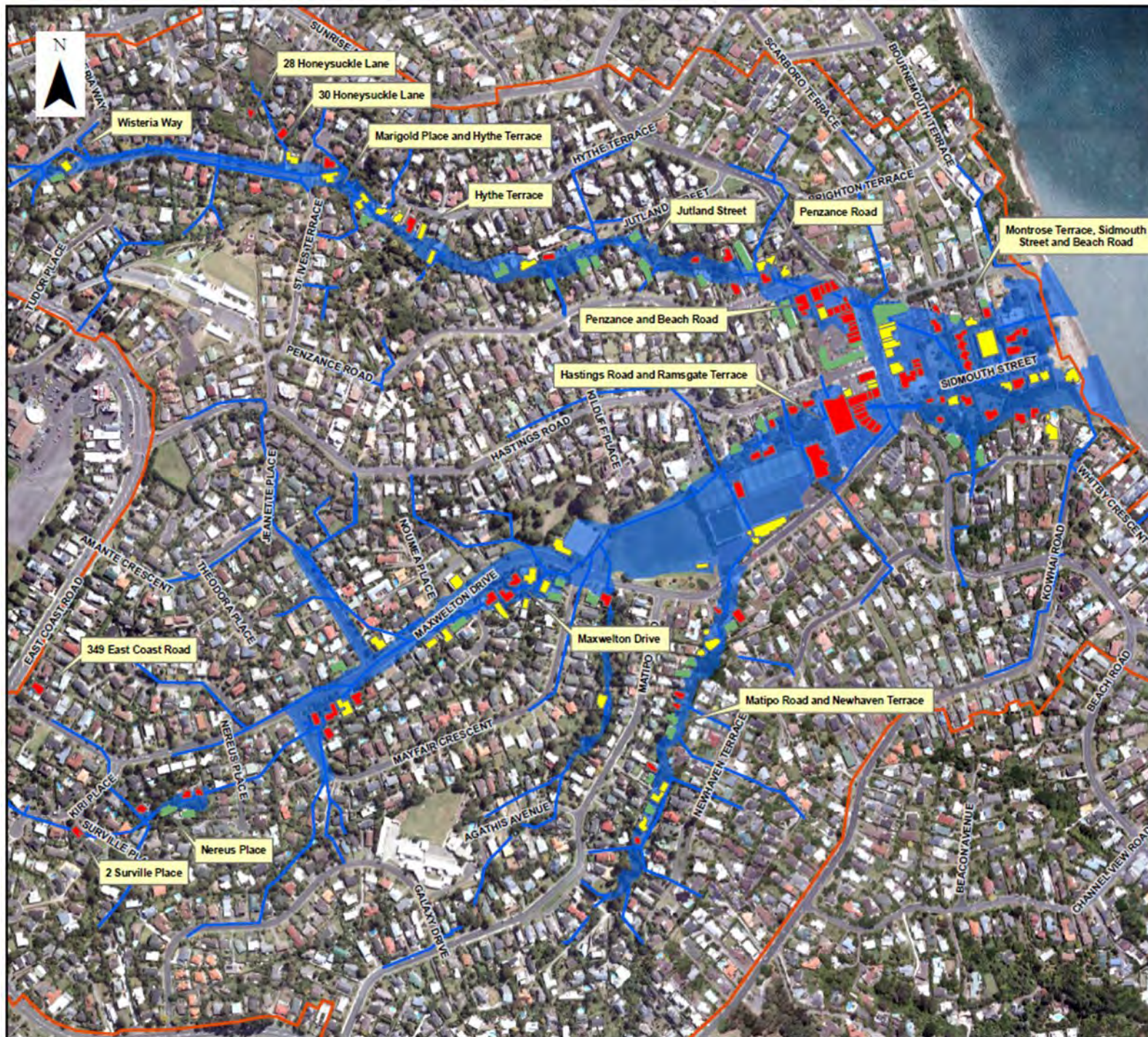
Past Planning of Flooding Mitigation Works

- Works carried NSCC in 2003 following complaints of flooding from 140 Stapleford Crescent
- Works completed were catchpits upgrade and overland flow path improvement through # 140
- Further flood mitigation assessment were carried in 2010
- Project was considered low priority at that time due to the following consenting and construction risks:
 - Need to construct large overland flow paths through private properties at both ends of Sandiacre Way
 - Difficulties in lowering the Sandiacre Way / Stapleford Crescent junction to release flows within flood prone area
 - Raising flood levels downstream by releasing flows ponding along Sandiacre Way

Review of Project Plan:

- Review the project extending proposed works downstream along the watercourse behind 140 Stapleford crescent and at Freiburg Park to mitigate effects of increased flows.
- Easements through private properties or considered purchasing property to construct overland flow path
- Re-assess project viability and priority through the business case process





LEGEND

BUILDINGS WITH HABITABLE FLOOR

- BELOW 500MM OF 100YR FLOOD LEVEL
- WITHIN 500MM OF 100YR FLOOD LEVEL
- ABOVE 500MM OF 100YR FLOOD LEVEL
- CATCHMENT BOUNDARY
- MODELLED SW PIPES
- 100 YEAR ARI MPD FLOODPLAIN



DECEMBER 2011
FINAL

DRAWN: JPI
CHECKED: HR

0 30 60 120 180 240 300 Meters

SCALE (A3): 1:5,000

Auckland Council
Te Kaunihera o Tāmaki Makaurau

AUCKLAND COUNCIL
MAIRANGI BAY CATCHMENT

Figure 1: Plan of Sites with Flooding Issues

Flooding issues in Mairangi Bay are similar in characteristics to those in the Taiāotea Catchment

- Upper catchment are typically overland flow flooding
- Lower catchment is flat with low ground levels especially within the town centre with levels from 5m to 3m near the stream
- Almost the entire town centre is within the flood plain
- Almost the entire town centre is affected by coastal inundation and sea level rise



Flood Mitigation Options Assessed Around the Town Centre

- Stream widening
- Additional Hastings Road culvert
- Additional Penzance Road Culvert
- Mairangi Bay Park – increasing flood detention
- Penzance to Montrose Road culvert
- Overland flow path improvement between 2 Penzance Road and 408 Beach Road

The effectiveness and difficulties confronting these options are similar to those proposed for the Browns Bay Town centre



Legend

- BUILDING WITH HABITABLE FLOOR (base case)
- BELOW 500MM OF 100YR FLOOD LEVEL
- WITHIN 500MM OF 100YR FLOOD LEVEL
- ABOVE 500MM OF 100YR FLOOD LEVEL
- Open Channel
- Modelled Stormwater Pipes
- Hastings Road culvert (additional)

MAIRANGI BAY OPTIONS MODELLING

Hastings Road culvert (additional)



Auckland Council
Te Kaitiaki o ōhauki Makaurau

Figure 9: Modelled Hastings Road culvert (additional)



Legend

- BUILDING WITH HABITABLE FLOOR (base case)
- BELOW 500MM OF 100YR FLOOD LEVEL
- WITHIN 500MM OF 100YR FLOOD LEVEL
- ABOVE 500MM OF 100YR FLOOD LEVEL
- Open Channel
- Modelled Stormwater Pipes
- Penzance Road culvert (additional)

MAIRANGI BAY OPTIONS MODELLING

Penzance Road culvert (additional)



Auckland Council
 Te Kaitiaki o Tāmaki Makaurau

Figure 13: Modelled Penzance Road culvert (additional)



Legend

- BUILDING WITH HABITABLE FLOOR (base case)
- BELOW 500MM OF 100YR FLOOD LEVEL
- WITHIN 500MM OF 100YR FLOOD LEVEL
- ABOVE 500MM OF 100YR FLOOD LEVEL
- Open Channel
- Modelled Stormwater Pipes
- Mairangi Bay Park bund

MAIRANGI BAY OPTIONS MODELLING

Mairangi Bay Park bund



Auckland Council
 Te Kaitiaki o Iwhiri Mākauau

Figure 15: Modelled Mairangi Bay Park bund



Legend

- Penzance/Montrose culvert
- Open Channel
- Modelled Stormwater Pipes
- BUILDING WITH HABITABLE FLOOR (base case)**
- BELOW 500MM OF 100YR FLOOD LEVEL
- WITHIN 500MM OF 100YR FLOOD LEVEL
- ABOVE 500MM OF 100YR FLOOD LEVEL

MAIRANGI BAY OPTIONS MODELLING
Penzance Road to Montrose Terrace culvert



Auckland Council
Te Kaitiaki o Tāmaki Makaurau

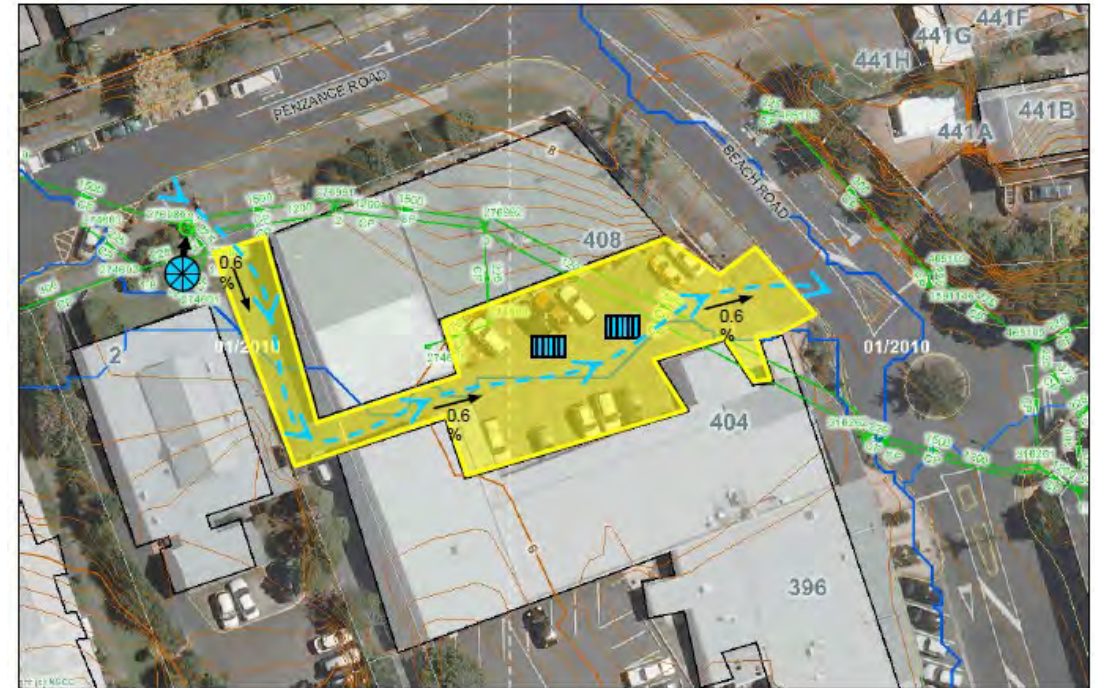
Figure 16: Modelled Penzance Road to Montrose Terrace culvert

Figure 2: Proposed Formal OLFP





Proposed overland flow Path through 2 Penzance Road and 408 Beach Road

Further assessments on the overland flow path option shows that it is not feasible

- *Difficulties in re-contouring back lane and car park and at the same time retain the same level of accessibility to shops*
- *Difficulties in re-directing flows into the car park without abrupt and significant changes to the levels of the back lane*
- *Consenting issues – multiple shop owners and operators*
- *Commercial properties – lower priority*



Legend:

-  - Re-profile vehicle accessway and carpark beyond to achieve a constant 0.6% gradient to Beach Road
-  - Existing and proposed alignment of overland flows
-  - Upgrade existing 225mmØ outlet pipe from scruffy dome to a 600mmØ pipe
-  - Re-set existing catchpit levels to conform with new pavement levels

Flooding at 2 Penzance Road and 408 Beach Road in July 2012



Red Beach Catchment



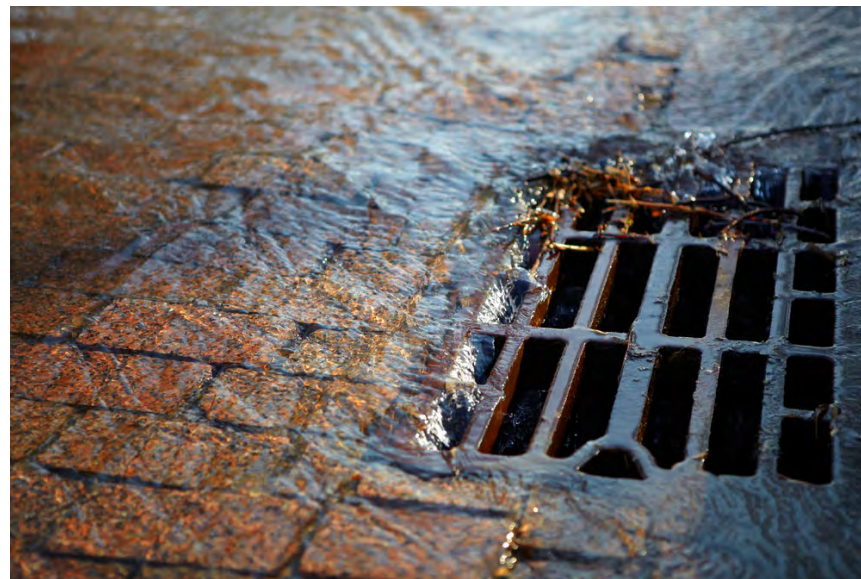
Restoring Waterways

Presentation for Hibiscus and Bays Local Board

August 2023

Anna Halliwell and Rita Kpodonu – Healthy Waters Specialist

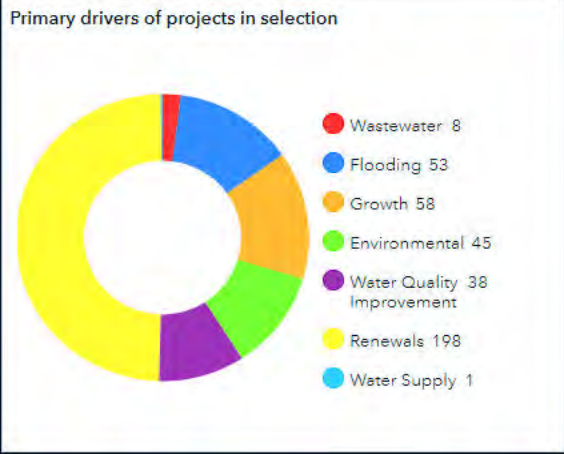
Healthy Waters vs Watercare





Auckland Council Water Improvement Projects

Water Quality Targeted Rate funding: Filter by primary drivers:

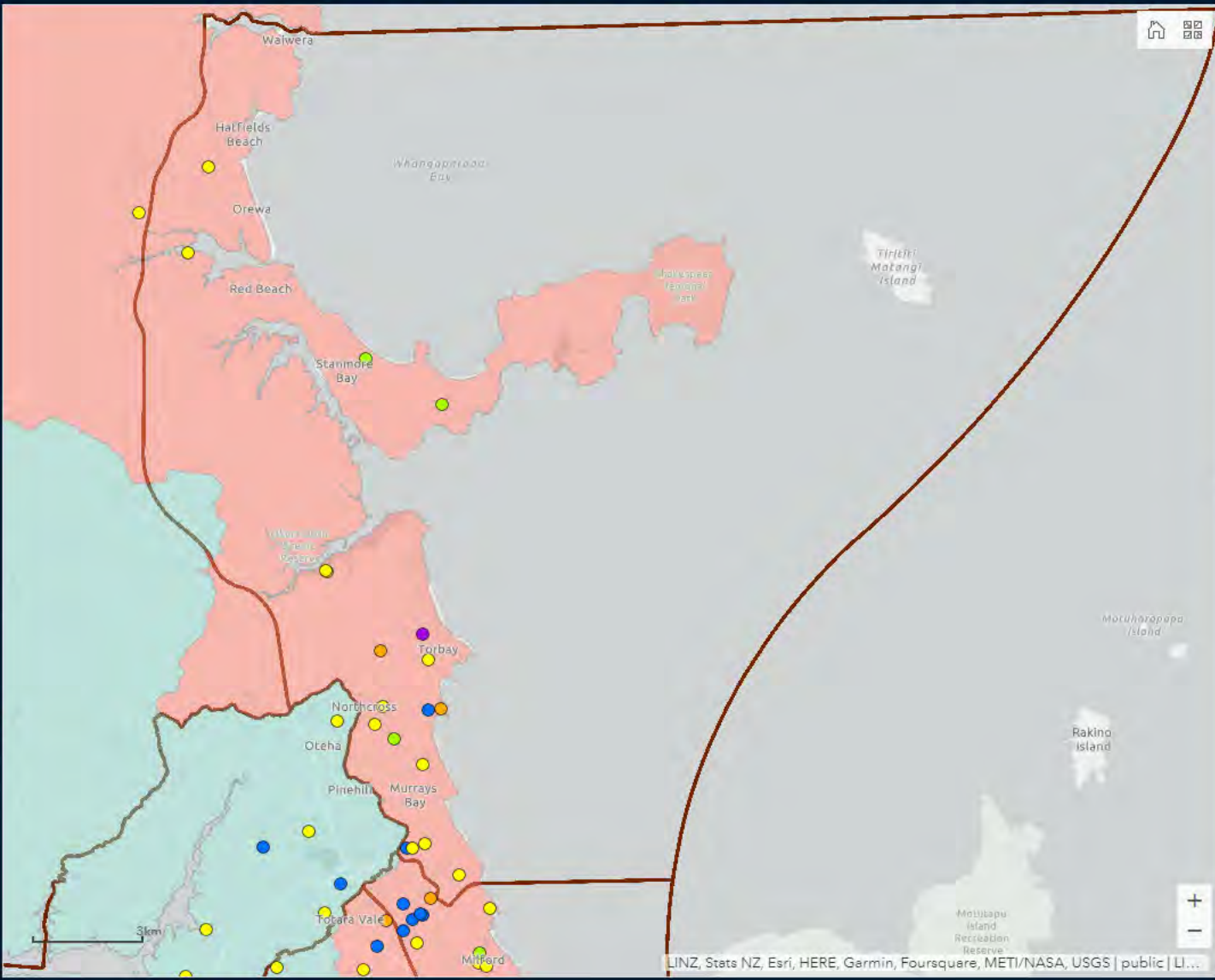


- Click on a project to zoom to its location and display information about it. Click again to unselect.
- Faulder Avenue and Fife Street Stormwater upgrade [1344]
 - Asbury Cres, Avenue of Remembrance & Pupuke GC (Outfalls Pkg1) [2450] [2511] [2576]
 - Stanley Bay Reserve SW Outlet Renewal [2448]
 - Sunnyview Road, Greenhithe Pipe and Outfall Renewal [2410]

Other Council projects:
 Safe Networks: [click here](#)
 Watercare: [click here](#)

Information on Water Quality Targeted Rate:
[click here](#)

Disclaimer:
 Locations are only indicative and not precise. Projects that are not location specific, are not physical works, or too large to be shown as a single point (e.g. stream restoration covering multiple Local Board areas) are not displayed.



- Click to filter projects by watershed.
- Hibiscus Coast
 - Islands
 - Kaipara
 - Mahurangi
 - Manukau Harbour
 - North East
 - Tamaki
 - Waitemata
- Last update: a minute ago

- Click to filter projects by geographic Local Board area.
- Ōtara-Papatoetoe
 - Manurewa
 - Puketāpapa
 - Whau
 - Rodney
 - Ōrākei
 - Maungakiekie-Tāmaki
 - Aotearoa / Great Barrier
- Last update: a minute ago

Ecobank: D'Oyly Reserve

This project naturalised approximately 667 metres of piped stream and added wetland environments which increased the ecological functionality of the surrounding area.



Ecobank: Sherwood Pond Renewal

Daylighting of 90m concrete stormwater pipe.
Creation of a cascade from the pond down to the stream bed

- Approximately 4 riffle-pool sequences
- Creating a stream channel at minimum 1.5 times the width as that below the confluence of the two tributaries
- A sinuous stream morphology created as far as practicable
- The use of large woody debris should be promoted within the stream channel, as opposed to rocky substrate



Ecobank: Edith Hopper Reserve

Edith Hopper Reserve is part of the urbanized Big Manly catchment, Whagaparaoa. There are three watercourses that form the stream network in the reserve that convey flows along the Hibiscus Coast. The stream has been concrete lined along two thirds of the 520m length of the water with little to no riparian planting.

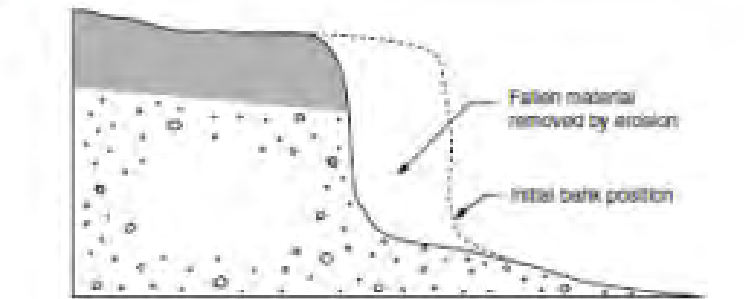
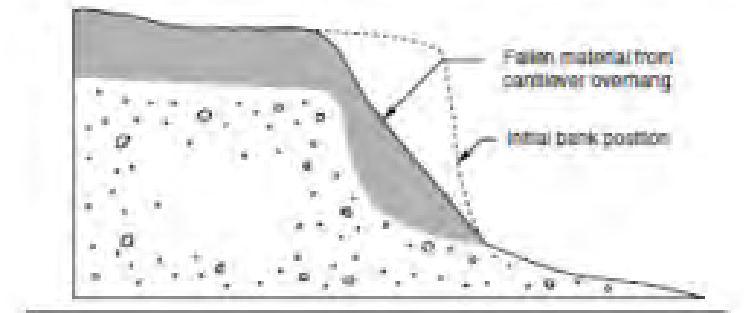
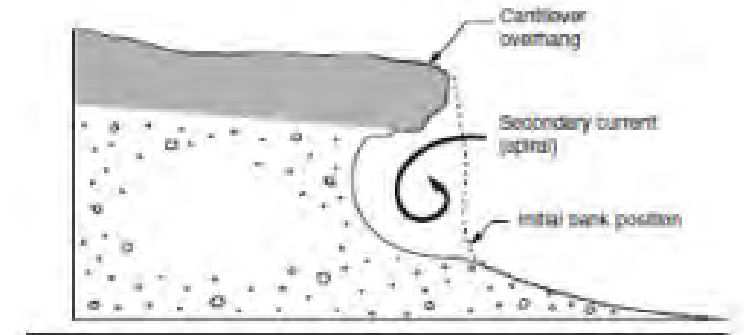
The key focuses for this project will be the removal of the concrete channel, riparian planting along both sides of the bank as well as the creation of a wetland along the main stem adjacent to the tennis courts. Approximately 30,000 plants will go in.

Planned for completion in 2027



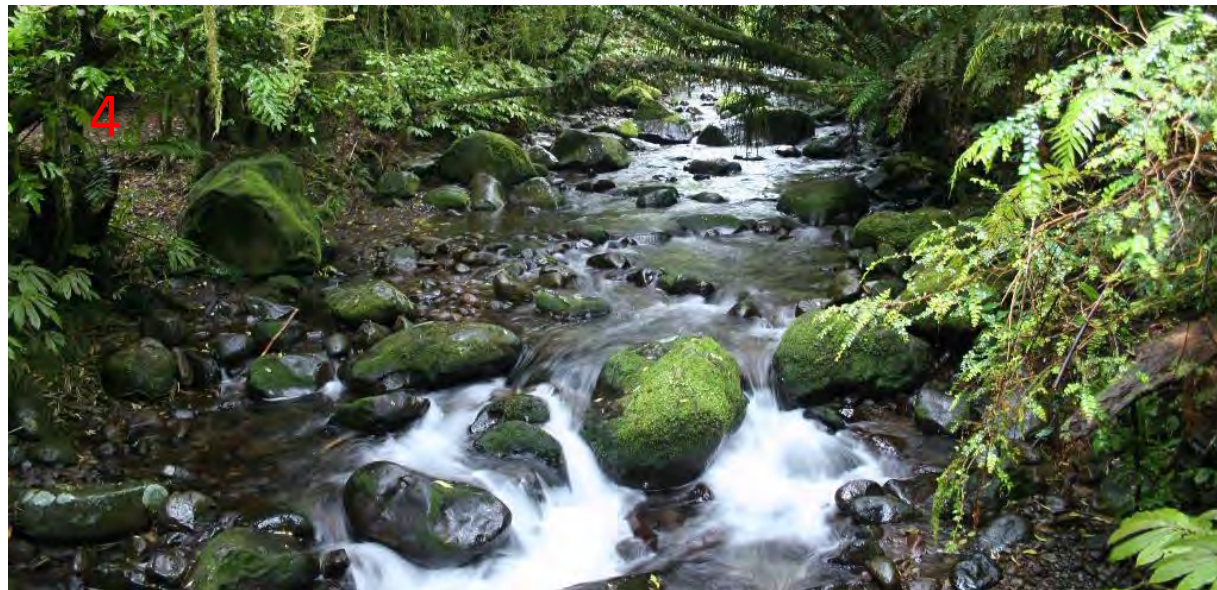
Awaruku Stream Remediation

Stream bank erosion was accelerated along a short section of lower Awaruku Stream where it borders the recently constructed stormwater treatment wetland. The preferred solution for erosion control involves a combination of bank toe and low bank armoring, along with the use of low drop structures within the stream bed.



Bank Failure by Toe Scour
(Johnson & Stypula 1993)





Key drivers for ecosystem health

Vegetation cover
and plentiful
habitat

Decreased
temperature

Nutrient level low

Low risk of
sedimentation

No rubbish

Low numbers of
invasive species

Clear fish passage

Low levels of
heavy metals and
harmful chemicals

Maintained onsite
wastewater
treatment systems

Visible streams
and no
channelisation

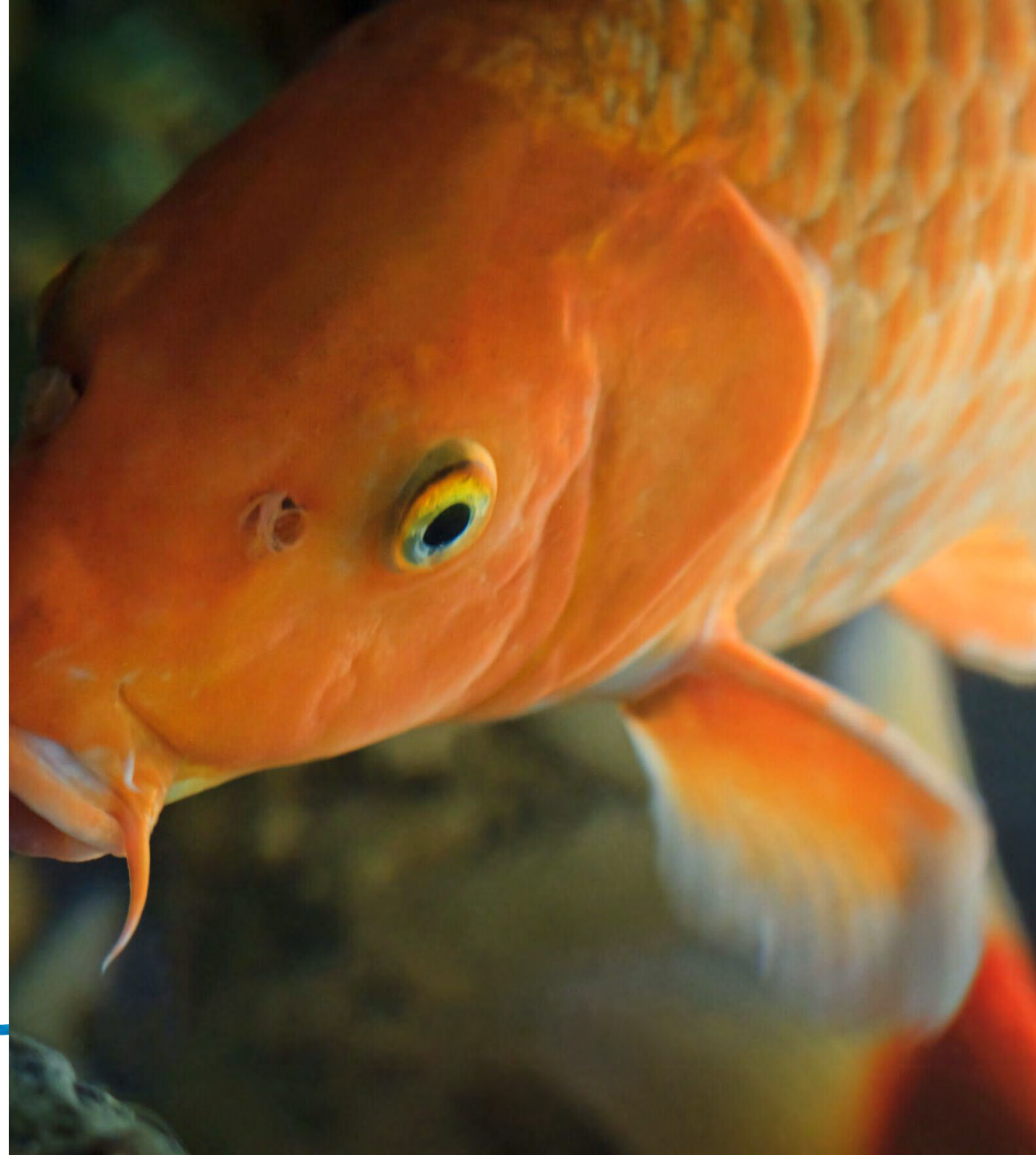
Vegetation cover and plentiful habitat

- Riparian edges created
- Ideally 5m or more



Decreased temperature

- Large, shade producing trees
- Consider plants that will cover the stream over time
- Pest fish like warmer water, natives like cooler water



Low risk of sedimentation

- Sediment is soil entering the water
- Changes flow and speed of water
- Can impact temperature
- Decreases habitat and biodiversity
- Scouring and undercutting pose a safety risk



No rubbish

- Can increase flood risk
- Can release chemicals
- Reduces biodiversity
- Consider rubbish removal walks every 6 months
- Call the Pollution Hotline for immediate or serious rubbish incidents



Low numbers of invasive species

- Pest control on land is essential
- Pest animals eat inanga eggs
- Rats known to eat kākahi



Council responsibilities

- Low levels of heavy metals and harmful chemicals
- Maintained onsite wastewater treatment systems
- Visible streams and no channelisation
- Nutrient level low
- Clear fish passage