

Hibiscus and Bays Local Board Workshop Record

Workshop record of the Hibiscus and Bays Local Board held on Thursday 24 February 2022, commencing at 10:00am.

PRESENT

Chairperson: Gary Brown
Members: Victoria Short
 Andy Dunn
 Janet Fitzgerald
 Julia Parfitt
 Alexis Poppelbaum
 Gary Holmes

Apologies: Leanne Willis

Also in attendance: Lesley Jenkins (Local Area Manager), Matthew Kerr (Senior Local Board Advisor), Robyn Joynes (Democracy Advisor)

Workshop Item	Governance role	Summary of Discussions
<u>Chairperson's welcome and apologies</u>		The chairperson opened the workshop.
<u>Administrative Matters</u>	Local initiatives and specific decisions	The senior local board advisor discussed administrative matters and sought feedback from local board members.
<u>Community Facilities update</u>	Keeping informed	Kris Bird, Melissa Johnston and Sandra May were in attendance to provide their monthly report and update the local board on the Manly Bollards public consultation.
<u>Sediment related water quality testing programme update</u>	Keeping informed	Maddison Jones and Hannah Brightley were in attendance to provide an update on the sediment related water quality testing programme.
<u>Te ao Maori and community led conservation programme update</u>	Keeping informed	Hannah Brightley, Ellice Protheroe, Sinead Brimacombe and Marilyn Kelly were in attendance to provide an update on the Te Ao Māori and community led conservation programme.

The workshop concluded at 1.03pm.

HIBISCUS & BAYS

Local Board Report – December 2021 / January 2022

MAKING
GREAT PLACES
AUCKLANDERS LOVE
COMMUNITY FACILITIES



New bollards installed at Hatfields Beach Reserve

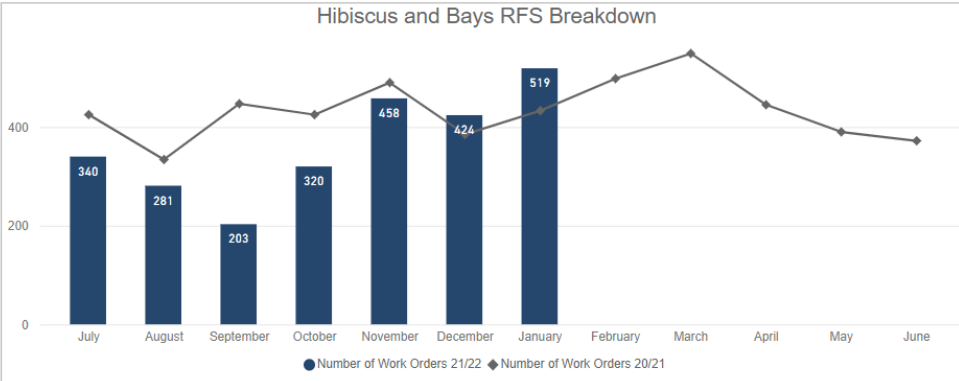
PERFORMANCE REPORTING

audit results and Request for Service

Request for Service Received

A total of 2545 raised for FY21/22 YTD.

Hibiscus and Bays RFS Breakdown



*Only includes RFS that have resulted in a Work Order for action.

Breakdown of Top 5 Request for Service for January

Service Name	# Received
Tree Maintenance - General	81
Plumbing Maintenance Service	63
Structure Maintenance and Repairs	56
Loose Litter Collection	39
Carpentry Maintenance Service	32

Breakdown of Top 5 Request for Service FY21/22 YTD

Service Name	# Received
Tree Maintenance - General	526
Structure Maintenance and Repairs	245
Plumbing Maintenance Service	228
Electrical Maintenance Service	172
Loose Litter Collection	146

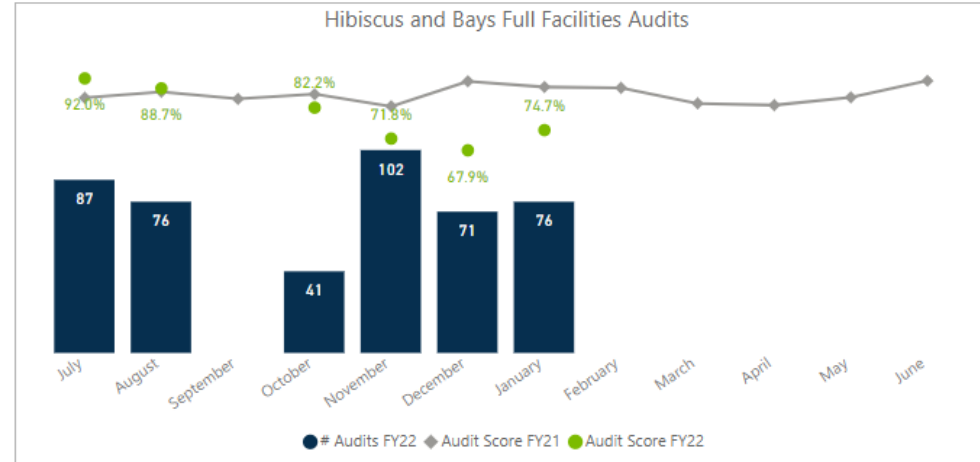
COMMENTARY

Requests for service received for December and January were typical for this time of year. The contractors did a good job of staying on top of loose litter over the summer period in parks and reserves, including regional parks, with several new initiatives implemented.

The contractor also responded well to additional cleaning and litter collections required as a result of illegal camping in beach reserves.

Audit Results

Hibiscus and Bays Full Facilities Audits



The highlights and lowlights of audits undertaken FY21/22 YTD are:

HIGHLIGHTS – YTD
Streetscapes – Clean
Building Cleaning
Response Work Orders

LOWLIGHTS – YTD
Tracks
Building Maintenance
Toilets
Hard Surfaces and Paths

COMMENTARY

Auditing scores were down for December and January.

Passive mowing is still of concern and additional open space and streetscape auditing is being undertaken to monitor the situation. Improvement plans are being prepared and implemented by the contractor to respond to the low audit scores.

MAINTENANCE DELIVERY UPDATE

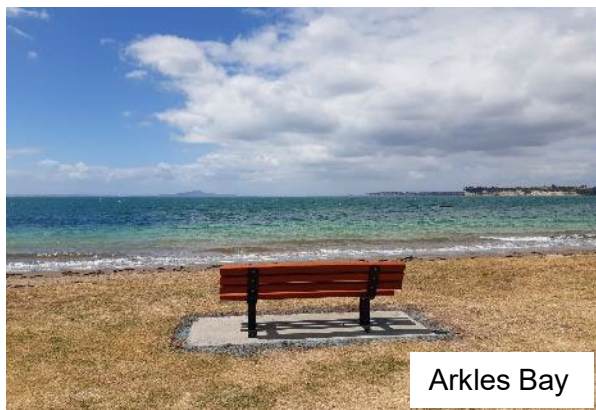
corrective, preventive, risk-based and condition-based maintenance

New Seats installed

The Whangaparaoa Rotary Club approached the team to supply a new bench seat in the Hibiscus and Bays area. Instead of the Rotary Club purchasing a new seat, three older seats that required refurbishing were used. The Rotary Club engaged the Men's Shed to do this work.

Through the Hibiscus and Bays furniture renewal project in the work programme we installed new concrete pads in Arkles Bay and Tindalls Bay and were able to utilise the existing pad at Gulf Harbour.

The overall result is three refurbished seats in great locations.



MAINTENANCE DELIVERY UPDATE

corrective, preventive, risk-based and condition-based maintenance



Langton Road Toilets



Through Ventia we organised for Jonathan Grange, the original artist, to return to the Langton Road toilet block to repaint the damaged murals that were originally painted in 2006.

It has freshened up the toilet block nicely.



MAINTENANCE DELIVERY UPDATE

corrective, preventive, risk-based and condition-based maintenance

Illegal camping

- One of the biggest issues experienced over the summer holidays was illegal camping in the east coast bays beach reserves.
- 216 complaints relating to freedom camping were received across the Auckland Region between 23 December 2021 and 10 January 2022.
- Browns Bay and Manly Beach were the most impacted areas in Hibiscus and Bays.
- The compliance team proactively visited Browns Bay and Manly Beach over the Anniversary and Waitangi long weekends. However, the issues experienced over the Christmas holidays were not as evident.
- A team of three enforcement officers attended between 5pm and 9pm on Friday and Saturday evenings to advise anyone who looked like staying for the night that this was in breach of the Auckland Council bylaws.
- Community Facilities have installed a number of additional no camping signs, as well as repairing damaged bollards and chains in a number of reserves.



New sign at Manly



Illegal camping at Manly Beach



MAINTENANCE DELIVERY UPDATE

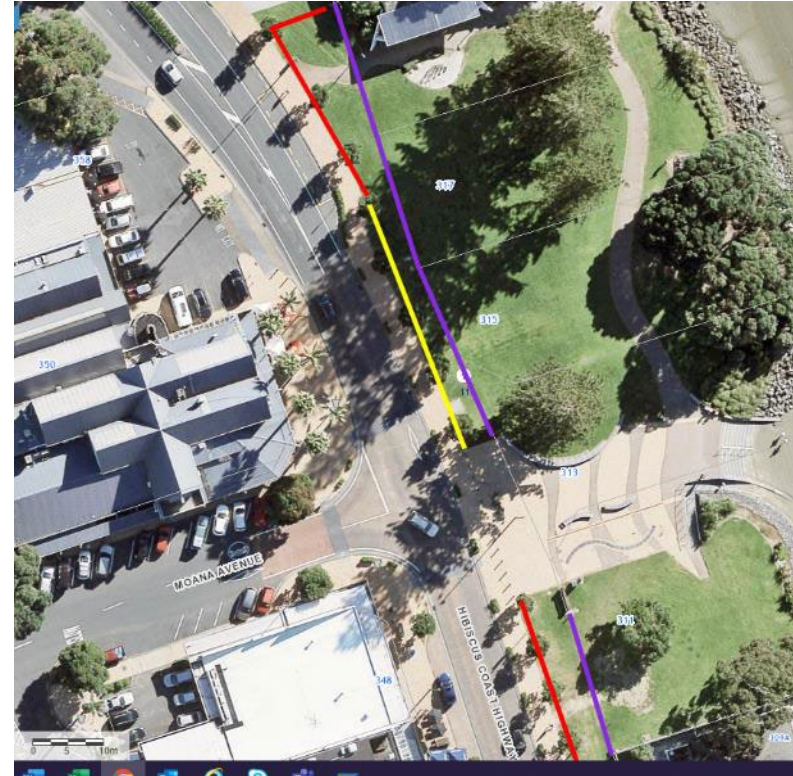
corrective, preventive, risk-based and condition-based maintenance

Moana Reserve Bollards

- Cars parking on Moana Reserve is becoming more and more of a problem. Over the most recent summer it became quite dangerous and some of the park assets were damaged.
- Methods of restricting access to the reserve have been investigated but there are underground services to contend with (in the location of the yellow line) and property boundary issues to work through (the reserve boundary is the purple line).

There are three possible options:

1. Install bollards on reserve boundary line (purple) this would still allow a small amount of parking, possibly between trees, which we do not really want and the alignment does not match the path edge. Interestingly the 2003 aerial photo below shows a line of bollards in this location, prior to the boulevard upgrade.
2. Continue with the original plan to install bollards along the yellow and red lines. Hydro excavation would be required, as well as a permit from Watercare, to work in proximity of the pipes (delineated by yellow line). This would be the most expensive option but would be the best outcome for the reserve.
3. Install bollards as originally planned along red lines and utilise rocks placed on the surface in yellow area. Rocks would be roughly same cost as bollards, but are not quite as aesthetically pleasing.



2003 Aerial photo



MAINTENANCE DELIVERY UPDATE

corrective, preventive, risk-based and condition-based maintenance

Geese in Aaron Point

- Complaints have been received regarding large flocks of geese in Aaron Point.
- Staff are in the process of getting quotes from Wildlands Consultants to capture and rehome the geese.



MAINTENANCE DELIVERY UPDATE

corrective, preventive, risk-based and condition-based maintenance

Vandalism



Unfortunately, the toilet block on the Te Ara Tahuna Walkway at the Estuary Arts Centre has been vandalized on two separate occasions recently.

Toilet vandalism is becoming more common, and when existing toilet blocks are renewed they need to be made as vandal resistant as possible to minimize potential damage.



The rubbish bin on the Okura Bush walkway was also damaged with the solar panel that operates the compactor on this big belly bin ripped off. A job has been raised to repair the damage.





PROJECT DELIVERY UPDATE

assets being built, renewed or maintained

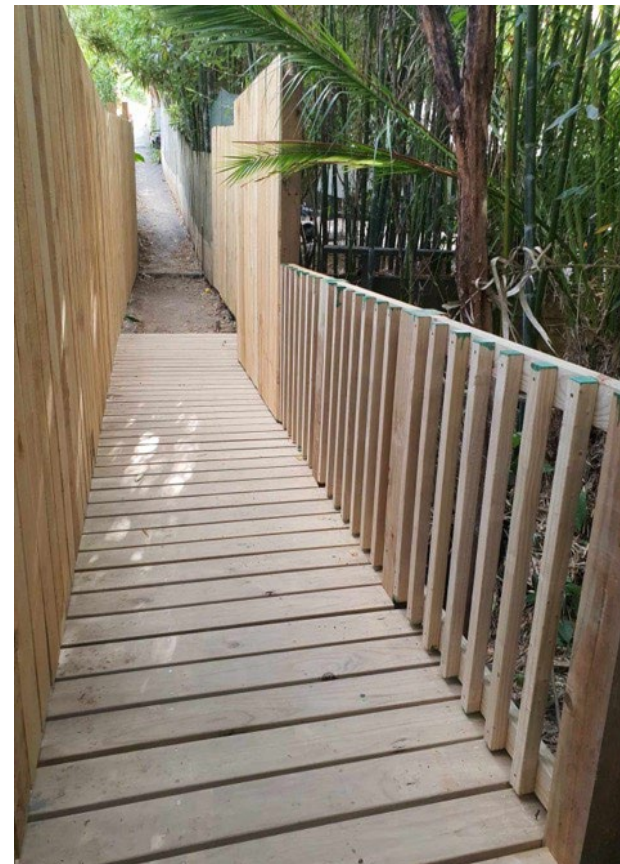
Māori Hut accessway to the Te Ara Tahuna Walkway

The renewal of the existing pathway, bridge and fence is progressing well. The project will be completed in February 2022.

Original bridge prior to the renewal



Final product





PROJECT DELIVERY UPDATE

assets being built, renewed or maintained

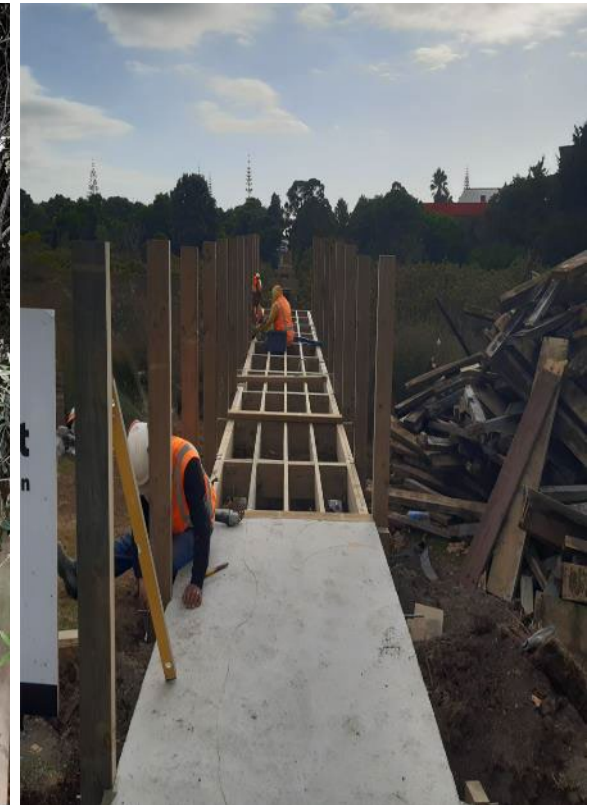
Centreway Bridge - Orewa

- The renewal of the Centreway Bridge is progressing
- Completion date is March 2022.

Original bridge prior to the renewal



New bridge under construction



PROJECT DELIVERY UPDATE

assets being built, renewed or maintained

East Coast Bays Leisure Centre – Notification of Works Commencing

Works to commence from 14 February 2022 and to be completed by mid –April 2022

Scope of Work

- Replacement of the 50 year old electrical switch board, including the provision of power cabling for the entire building
- Changes to the main entrance lobby including receptionist counter
- Renovation of the kitchen including a new layout plan for the staff room
- Interior painting, main hall timber floor polishing and carpeting
- Replacement of hot water cylinders
- Installation of newly designed IT services
- Upgrade of the existing fire system with a new alarm





PROJECT DELIVERY UPDATE

assets being built, renewed or maintained

Waiake Beach – Seawall and access structures renewal – Notification of Works Commencing

Works to commence from 08 February 2022 and to be completed by mid-May 2022

Scope of Work

- Revetment works, including groyne
- Shotcrete on existing seawalls
- Installation of new stairs to beach

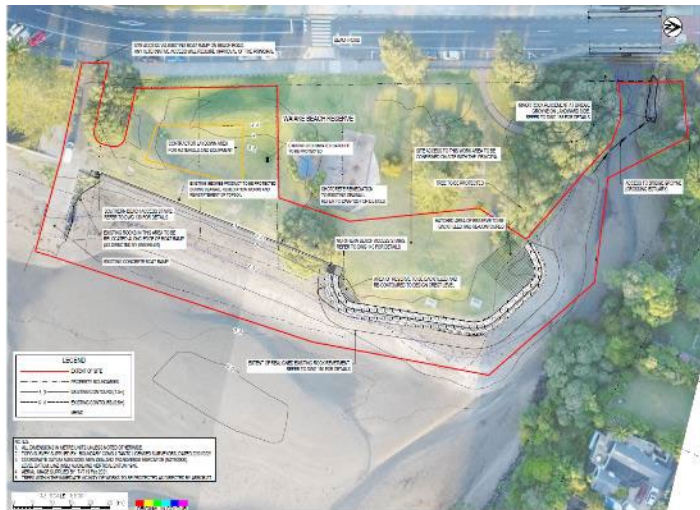


IMAGE SHOWING AREA OF GROUPE WORKS
SCALE N.T.S



PROJECT DELIVERY UPDATE

assets being built, renewed or maintained

Silverdale War Memorial Park minor asset renewal – Notification of Works Commencing

Works to commence from 26 January 2022 and to be completed by March 2022

Scope of Work

Minor asset renewal, including:

- Bollard replacement (depicted in yellow)
- Footpath replacement (depicted in red/ blue / green)
- New installation of bollards near Men's Shed (no shown on picture)

The approximate areas of work are outlined in the below image.



PROJECT DELIVERY UPDATE

assets being built, renewed or maintained

Hibiscus and Bays – Playground Renewals – Everard Reserve

Works to commence from 10 January 2022 and to be completed by end of March 2022

Scope of Work

The new playground includes:

- Flying fox
- Stand-up see-saw
- Little Eagles Nest Prairie – climbing structure with a slide
- Mega swing plus basket swing
- Kiwi curve spinner
- Double spin bar fitness station
- Nature play elements, and
- Picnic furniture and shelter.



PROJECT DELIVERY UPDATE

assets being built, renewed or maintained

Hatfields Beach – Bollard Installation

- Works to install new bollards along Hatfields Beach Reserve were completed in January 2022.
- Signage informing people of 'no overnight camping' was also installed as part of the bollard installation.



PROJECT DELIVERY UPDATE

assets being built, renewed or maintained

Hibiscus and Bays – Park Building Renewal – Silverdale Village / Agency Lane

The refurbishment of the public toilet at Silverdale Village was completed in January 2022.

- Temporary toilet facilities (for construction period)
- Demolition of exterior/ interior/ roof and disposal
- Full roof replacement
- Shelter roof and screening replacement and exterior seating
- Painting of the interior and exterior walls
- Full interior refurbishment
- Refinished flooring (Epoxy)
- New partitions and block walls
- Door replacements
- Seats
- Plumbing and sanitary ware
- Electrical works
- New service room configuration
- External paving and drainage
- Signage
- Planting/garden mulch (planting to be completed outside summer months)





PROJECT DELIVERY UPDATE

assets being built, renewed or maintained

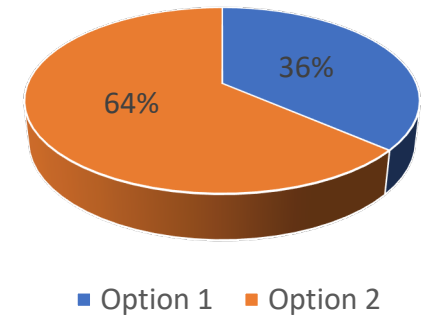
Woodridge Reserve - Playground Renewal

The public consultation – ‘Have Your Say’ campaign that took place between 20 September 2021 and 15 October 2021, resulted in the community choosing option 2 of the available concept design options. The equipment has been ordered and preparation is underway to implement the playground renewal before June 2022.

Concept Design Option 2



Woodridge Playground



ARBORICULTURE UPDATE

the cultivation of trees and shrubs

Arboriculture Maintenance

Treescape have been undertaking pruning works at Tawhana Crescent, off Whangaparaoa Road, Red Beach.

The large mature Pine tree (*Pinus sp.*) has had a crown lift over the road, as well as a weight reduction and deadwood removal, as part of proactive tree management.

The Eucalyptus and Pohutukawa (*Metrosideros sp.*) trees have all been pruned over the road as well, to gain the necessary clearances required.

Treescape also undertook the removal of three dead and heavily declined Macrocarpas (*Cupressus sp.*) trees on the boundary with the Pupuke Golf Course and East Coast Road, Campbells Bay.

The trees have most likely succumbed to Cypress Canker (*Seiridium spp.*) /Cypress Dieback. This can cause the trees to die over a long period of time.

It also appears the other Cypress trees along the boundary have also developed the dieback, these will need monitoring and work actioned accordingly.

Tawhana Crescent Pine before and after pruning.



Eucalyptus and Pohutukawa before and after pruning.





ECOLOGICAL UPDATE

Equitable access to high quality natural environments

MAKING
GREAT PLACES
AUCKLANDERS LOVE
COMMUNITY FACILITIES

Rabbit control and collaboration with the Leasing Team

Third quarter rabbit control at Centennial Park (adjacent to Pupuke Golf Course) and Sunnynook Bush (where rabbits were reportedly establishing a new population around two years ago when numbers in the area were very high) was undertaken. The removal of inter-regional boundary restrictions allowed control specialists to travel to Auckland.

Rabbit numbers appear lower than this time last year.

Golf courses provide ideal rabbit habitat. Rabbit numbers are a problem in several parks in the vicinity of a golf course.

Control of rabbits is required as a condition of the current Pupuke Golf Course lease, but there is a lack of clarity around the standard of control required.

Pupuke Golf Course has previously requested ratepayer-funded rabbit control, but is currently co-funding joint control on Centennial Bush and the golf course. Pupuke Golf Course has also requested ratepayer-funded arboriculture work on the golf course.

As the Pupuke Golf Course lease is up for renewal, operational staff have discussed lease conditions related to arboriculture and ecological matters with the Leasing Team.

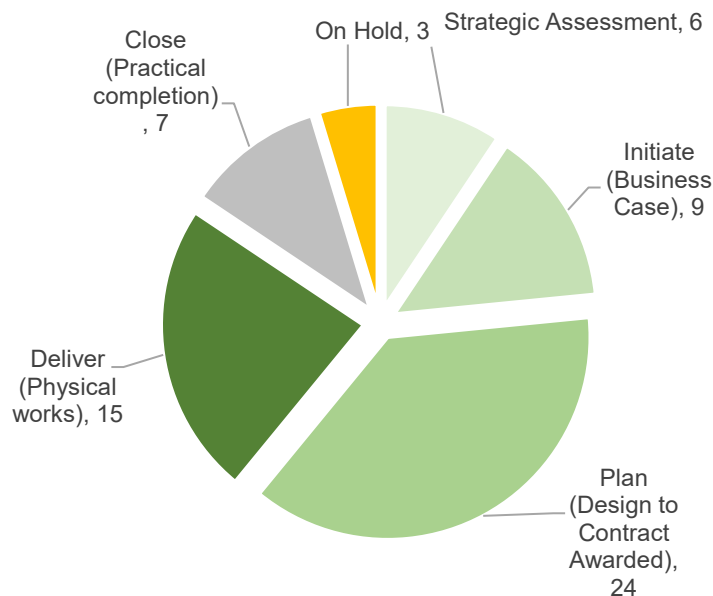


NOTIFICATIONS PROJECT DELIVERY STATUS

Project Delivery

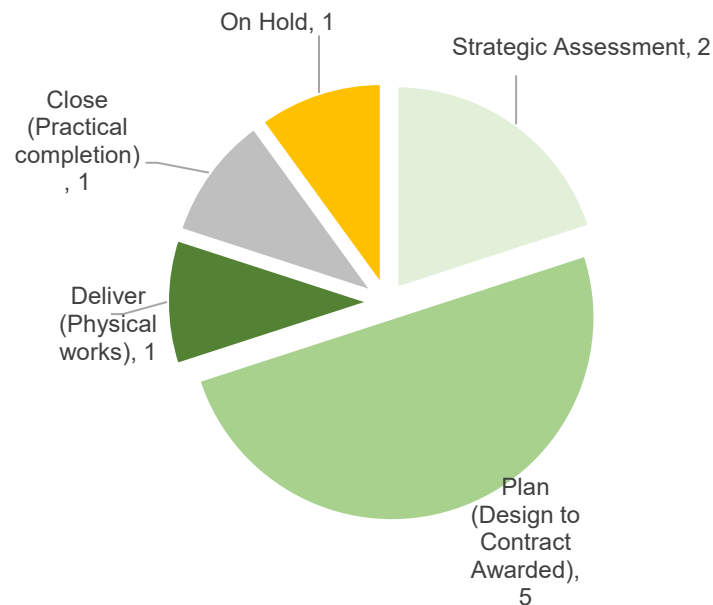
Hibiscus and Bays Local Board - Project Status

Total Number of Projects - 63



Hibiscus and Bays Local Board - Project Status

Total Number of LDI Projects - 10



Notifications - Next Month

Projects commencing construction in February 2022:

- East Coast Bays Leisure Centre
- Waiake Beach sea wall renewal
- Silverdale War Memorial Park minor asset renewal

Projects commencing construction in March 2022:

- Browns Bay Reserve Playground renewal
- Silverdale War Memorial Park Playground renewal

Projects completed in February 2022:

- Māori Hut Walkway (Te Ara Tahuna) renewal completed



PROJECT DELIVERY

status and summary updates

				Initiate	Preliminary design	Detailed Design	Tender Process	Construction	Defects	
				2021/2022 - Current year						
Activity Name	RAG	Local Board Commentary	Timeline	Q1	Q2	Q3	Q4			
(OLI) Kohu Street to Marine View, Orewa Beach - renew northern seawall	Amber - At Risk	Current status: A scope of work document has been finalised to appoint a coastal engineer and designer to complete the detailed design. Next steps: Procurement of these services will be progressed in February 2022.	Baseline	[Gantt chart showing project progress from Q1 to Q4]						
			Forecast/Actual							
12 Hibiscus Coast Highway, Silverdale - renew facility	Amber - At Risk	Current status: Project deferred to financial year 2023 as a Strategic Assessment will need to be prepared by the Parks, Sport and Recreation Team. Next steps: Await direction from the above assessment.	Baseline	[Gantt chart showing project progress from Q1 to Q4]						
			Forecast/Actual							
86 Harvest Ave, Orewa - develop new neighbourhood park	Green - On Track	Current status: Site investigation works and a site survey were delayed due to COVID-19 restrictions and protocols in late 2021. Next steps: A survey of the site will be undertaken in February/March 2022.	Baseline	[Gantt chart showing project progress from Q1 to Q4]						
			Forecast/Actual							
Alice Eaves Scenic Reserve - renew pedestrian bridge over Nukumea Stream	Green - On Track	Project completed in November 2021.	Baseline	[Gantt chart showing project progress from Q1 to Q4]						
			Forecast/Actual							
Ashley Reserve - renew goal posts	Green - On Track	Current status: Procurement of new goals. Next steps: Delivery of goals to Ashley Reserve in early 2022.	Baseline	[Gantt chart showing project progress from Q1 to Q4]						
			Forecast/Actual							
Browns Bay Beach Reserve - replace Beach Front Lane boardwalk	Amber - At Risk	Current status: Construction works commenced in May 2021. Section 1 and parts of Section 2 have been reopened to the public. Next steps: Works are on hold until remaining materials arrive in New Zealand. Estimated completion of the final 60 metres of boardwalk is in early 2022.	Baseline	[Gantt chart showing project progress from Q1 to Q4]						
			Forecast/Actual							
Browns Bay Reserve - renew play space	Green - On Track	Current status: Stage 1 of works have commenced with the renewal of the clutter bridge. Next steps: Procurement of playground undersurface and civil works. Main playground to be completed in Stage 2 - starting March 2022.	Baseline	[Gantt chart showing project progress from Q1 to Q4]						
			Forecast/Actual							
Bushglen Reserve - implement concept plan	Green - On Track	Current status: Preparing resource consent amendment with input by arborists and ecologist. Next steps: Submit amended resource consent application and associated supporting documentation.	Baseline	[Gantt chart showing project progress from Q1 to Q4]						
			Forecast/Actual							
Centennial Park, Campbells Bay - renew road	Green - On Track	Current Status: Site investigation and concept design report complete. Next steps: Detail design and tender package for procurement of contractor.	Baseline	[Gantt chart showing project progress from Q1 to Q4]						
			Forecast/Actual							
Centreway Reserve - renew bridge	Green - On Track	Current status: Construction work is underway. Next steps: Complete the project on time.	Baseline	[Gantt chart showing project progress from Q1 to Q4]						
			Forecast/Actual							



PROJECT DELIVERY

status and summary updates

Activity Name	RAG	Local Board Commentary	Timeline	2021/2022 - Current year					
				Initiate	Preliminary design	Detailed Design	Tender Process	Construction	Defects
				Q1	Q2	Q3	Q4		
Churchill Reserve - renew walkways and gardens	Green - On Track	Current status: Review reserve management plans. Investigation and development of scope for professional services. Next step: Site surveys and further site investigations prior to developing initial scope of works.	Baseline Forecast/Actual						
D'Oyly/Stanmore Bay Weir Reserve - renew play space	Green - On Track	Current status: Site visit complete. Have Your Say campaign complete. Analysing feedback from community consultation. Next step: Development of draft concept design.	Baseline Forecast/Actual						
East Coast Bays Community Centre building - refurbish facility	Amber - At Risk	Current status: On 5 July 2021 the Service and Asset Planning Team presented the preliminary findings of their needs assessment for this building to the Hibiscus and Bays Local Board at a workshop. Next steps: The Service and Asset Planning Team will present the local board with a more detailed assessment of their findings and options in March 2022. This assessment, local board input and consultation with the building's stakeholders will help to inform the scope of works that will be require within this project.	Baseline Forecast/Actual						
East Coast Bays Leisure Centre - reconfigure front of house & renew bathroom flooring	Green - On Track	Current status: Pre-construction meeting completed Next steps: Commence construction work	Baseline Forecast/Actual						
East Coast Bays Leisure Centre - renew stadium floor	Green - On Track	Current status: Construction documents are being prepared. Next steps: Approve all construction document and commence the construction work.	Baseline Forecast/Actual						
East Coast Bays Library - comprehensive renewal	Green - On Track	Project complete in July 2021.	Baseline Forecast/Actual						
Estuary Arts Centre - remediate section of roof	Green - On Track	Current Status: Design work for the revised scope is underway. Next Steps: Secure sufficient budget to cover the revised scope.	Baseline Forecast/Actual						
Fitzwilliam Drive Reserve - renew walkways and stairs	Green - On Track	Current Status: Initial site visit completed. Procurement of technical design services complete. Next step: Site investigation continues. Begin design phase.	Baseline Forecast/Actual						
Freyberg Park - demolish and rebuild main park building	Green - On Track	Current status: Physical work contract has been awarded. Next steps: Commence construction work upon receipt of relevant construction documentation.	Baseline Forecast/Actual						



PROJECT DELIVERY

status and summary updates

Activity Name	RAG	Local Board Commentary	Timeline	2021/2022 - Current year			
				Q1	Q2	Q3	Q4
Freyberg Park - renew car park and retaining wall	Green - On Track	Current Status: Physical work contract for the retaining wall has been awarded and the carpark design is underway. Next Steps: Commence the construction work for retaining wall.	Baseline				
			Forecast/Actual				
Freyberg Park - renew sports field # 3	Green - On Track	Current Status: Added soil testing scope for the field number 4 to the original scope. Next Steps: Commence investigation and design work for fields number 3 and 4.	Baseline				
			Forecast/Actual				
Freyberg Park - replace pedestrian bridge and boardwalk	Green - On Track	Project complete in November 2021	Baseline				
			Forecast/Actual				
Freyberg Park and Sherwood Reserve - renew bridges and pathways	Green - On Track	Current status: Developing plan of renewal of various footpaths in both reserves. Complete technical specifications and working schedule. Scope minor renewal works on three bridges. Next step: Prepare building consent for minor bridge works and handrail replacements.	Baseline				
			Forecast/Actual				
Gulf Harbour Marina Hammerhead Reserve - renew carparks lights	Green - On Track	Project completed October 2021. Completed works consisted of car park light replacement.	Baseline				
			Forecast/Actual				
Hatfields Beach Reserve - install bollards	Green - On Track	Current Status: Closed landfill approval for installation of bollards is being processed. Next steps: Installation of bollards will be scheduled as soon as closed landfill approval has been received.	Baseline				
			Forecast/Actual				
Hibiscus & Bays - renew carparks 2020/2021+	Green - On Track	Current status: Stanmore Bay Park - Boating Club and Leisure Centre works completed. Next steps: Car park renewal at Mairangi Bay Arts Centre scheduled for December 2021. Browns Bay Village car park renewal scheduled for January/February 2022.	Baseline				
			Forecast/Actual				
Hibiscus and Bays - actions from signage audit	Amber - At Risk	Current status: The signage for the 22 reserves are being manufactured. Next steps: The installation of signs is planned to commence in early 2022.	Baseline				
			Forecast/Actual				
Hibiscus and Bays - construct pump track	Green - On Track	Current status: This project was approved as part of the FY2021/2022 Work Programme on 17 June 2021. Pump track layout and locations were presented to the local board in a workshop on 25 November for feedback. Next steps: \$5,000 LDI CAPEX funding from the 31020 Orewa Community Centre - review carpark options project to be reallocated to this project. Pump track to be ordered from the contractors and site locations confirmed by the local board in December 2021.	Baseline				
			Forecast/Actual				
Hibiscus and Bays - deliver Centre Plan improvements	Amber - At Risk	Current status: This project is on hold until future years.	Baseline				
			Forecast/Actual				



PROJECT DELIVERY

status and summary updates

			Initiate	Preliminary design	Detailed Design	Tender Process	Construction	Defects
Activity Name	RAG	Local Board Commentary	Timeline	2021/2022 - Current year				
				Q1	Q2	Q3	Q4	
Hibiscus and Bays - develop dog park	Green - On Track	Current status: Staff attended a local board workshop on 28 October 2021 to present the development plan for a dog park at Western Reserve, Orewa. Site investigations for a suitable site in the East Coast Bays subdivision will continue in Q3 and presented at a future workshop. Next steps: Funding allocation for the new Western Reserve Dog Park is to be proposed for future years in the next work programme.	Baseline	[Gantt chart showing project completion in Q3 2022]				
			Forecast/Actual					
Hibiscus and Bays - Ngahere urban forest strategy - implement Planting Plan	Green - On Track	Current status: Community Services presented the Ngahere Strategy planting plans for several locations in the Hibiscus and Bays Local Board area at a workshop in March 2021. Next steps: The plants will be ordered in advance and the first year of planting will take place over late autumn into winter 2022.	Baseline	[Gantt chart showing project completion in Q4 2022]				
			Forecast/Actual					
Hibiscus and Bays - playground improvements	Green - On Track	Current status: all playground improvement sites completed. Completion of Mariner Rise equipment installation in October 2021. Project complete.	Baseline	[Gantt chart showing project completion in Q4 2021]				
			Forecast/Actual					
Hibiscus and Bays - renew park buildings 2018/2019+	Green - On Track	Current status: Practical completion and handover of completed works of public toilets at Dacre Historic Cottage and Kinloch Reserve, Brown Bay Beach North and South, and Red Beach. Construction underway at Silverdale Village toilet. Next steps: Works continue at Silverdale Village toilet with completion due by end of December 2021.	Baseline	[Gantt chart showing project completion in Q4 2021]				
			Forecast/Actual					
Hibiscus and Bays - renew park buildings 2021/2022+	Green - On Track	Current status: Finalising scope at Arundel Reserve, Cooper Lea Reserve, Mairangi Bay Park, Stanmore Bay Beach Reserve, Victor Eaves, and Silverdale War Memorial Park. Next step: Procurement of contractor.	Baseline	[Gantt chart showing project completion in Q4 2022]				
			Forecast/Actual					
Hibiscus and Bays - renew park furniture and fixtures 2021/22+	Green - On Track	Current status: Locations and asset renewal fully identified. Procurement of furniture and contractor. Next step: Installation of fixtures and furniture of individual sites programmed for January to May 2022.	Baseline	[Gantt chart showing project completion in Q4 2022]				
			Forecast/Actual					
Hibiscus and Bays - renew park play spaces	Green - On Track	Current status: Procurement of physical works contractor for Everard Reserve. Next steps: Delivery scheduled for early 2022.	Baseline	[Gantt chart showing project completion in Q4 2022]				
			Forecast/Actual					
Hibiscus and Bays - renew playground components and drainage 2021/2022+	Green - On Track	Current status: Site visit in Orewa and Mairangi Bay completed. Next steps: Identifying suitable play equipment replacement options for failed equipment. Develop scope for drainage works in early 2022.	Baseline	[Gantt chart showing project completion in Q4 2022]				
			Forecast/Actual					
Hibiscus and Bays - renew signage	Green - On Track	Current status: This project will commence in Q3 Next steps: Undertake site visits in Q3 and scope works for delivery in future years.	Baseline	[Gantt chart showing project completion in Q4 2022]				
			Forecast/Actual					



PROJECT DELIVERY

status and summary updates

Activity Name	RAG	Local Board Commentary	Timeline	2021/2022 - Current year			
				Q1	Q2	Q3	Q4
				Initiate	Preliminary design	Detailed Design	Tender Process
Hibiscus and Bays - renew walkways and paths 2021/2022+	Green - On Track	Current status: The scoping for the walkways renewal on Hibiscus Coast is underway. Winstones Cove, Torbay: Mana whenua site visit. Next step: Review scope for Hibiscus Coast renewals. Prepare documentation for resource consent application for Winstones Cove.	Baseline Forecast/Actual				
Hibiscus and Bays - settlement stories signage	Green - On Track	Current status: This project will commence in Q3 Next steps: Continue identification of key content to consider for signage and prepare signage options (size / location). Options will be presented to the local board at a future workshop for further direction and comment.	Baseline Forecast/Actual				
Hibiscus Coast Community House - renew roof and spouting	Green - On Track	Current Status: Detail design drawings in process. Next step: Prepare building consent documentation.	Baseline Forecast/Actual				
Island View Drive - plant reserve vegetation	Green - On Track	Project will be scoped and work commenced in next planting season during financial year 2023.	Baseline Forecast/Actual				
Manly Beachfront (East) - install bollards along The Esplanade	Green - On Track	Current Status: Installation of bollards intended for October 2021 but was placed on hold on local request. Next steps: Community consultation until 10th December 2021.	Baseline Forecast/Actual				
Minor Capital works - Hibiscus and Bays	Green - On Track	Current status: Next steps:	Baseline Forecast/Actual				
Murrays Bay and Crow's Nest Rise Walkway - renew pathways	Green - On Track	Current Status: Initial site walkover completed. Next Step: Refine the project scope and prepare project brief for professional services.	Baseline Forecast/Actual				
Orewa Community Centre - renew roof	Green - On Track	Current Status: DSA underway by Seismic Team. Next Steps: Investigation and design phase to be started in financial year 2023.	Baseline Forecast/Actual				
Orewa Library - comprehensive renewal incl. roof	Amber - At Risk	Current status: Options for roof renewal were presented to the local board in FY2019/20 and feedback received was to investigate the long-term future of the building. The Service, Strategy and Integration Team and Eke Panuku presented optimization options to the local board in April 2021 but the local board did not wish to pursue those options further. Next steps: Investigate design and funding options that will resolve issues with the roof and also maximise the interior layout of the building's existing footprint.	Baseline Forecast/Actual				



PROJECT DELIVERY

status and summary updates

Activity Name	RAG	Local Board Commentary	Timeline	2021/2022 - Current year					
				Initiate	Preliminary design	Detailed Design	Tender Process	Construction	Defects
				Q1	Q2	Q3	Q4		
Outram Hall - refurbish building	Green - On Track	Current status: Scope of works being developed and prepared for pricing. Next step: Procurement of works and schedule programme in consultation with the lease holder.	Baseline						
			Forecast/Actual						
Pacific Parade Steps - install western staircase	Green - On Track	Current Status: Work at the bottom landing is underway Next Step: Arrange final payments upon completion of the bottom landing.	Baseline						
			Forecast/Actual						
Rock Isle Beach Reserve - rebuild toilet block	Green - On Track	Project completed in October 2021.	Baseline						
			Forecast/Actual						
Shadon/Springtime Reserve - renew playspace	Green - On Track	Current status: This project will commence in Q3. Next steps: Undertake site visits in Q3 and scope works for delivery in financial year 2022/2023.	Baseline						
			Forecast/Actual						
Silverdale War Memorial Park - renew park assets	Green - On Track	Current status: Scope for works for stage 1 of the minor renewals are completed. Works include: new bollard installation around Men's shed, bollard renewal around car park and paths renewals. Next step: Liaison with onsite stakeholders to schedule works in early 2022.	Baseline						
			Forecast/Actual						
Silverdale War Memorial Park - renew playspace	Green - On Track	Current status: Finalise design. Next step: Procurement of play equipment.	Baseline						
			Forecast/Actual						
Silverdale War Memorial Park - renew sport field lighting on fields three and four	Green - On Track	Project completed in July 2021.	Baseline						
			Forecast/Actual						
St Annes Hall - refurbish building	Green - On Track	Current status: Interior works completed. Repaint of exterior of the building 75% complete. Next step: Building consent has been submitted for structural timber works required as significant amount of timber was found in need of replacement.	Baseline						
			Forecast/Actual						
Stanmore Bay Park - renew sports field #4 and Raiders Club sports field lights	Green - On Track	Current Status: Conditional assessment is in progress on the previous resource consent conditions. Next Steps: Refine the project scope based on the assessment of the previous consent.	Baseline						
			Forecast/Actual						
Stanmore Bay Pool & Leisure Centre - renew minor assets	Green - On Track	Current status: Relining of the splash pad has been completed. Next steps: Procurement of concreting and artificial grass installation in the surrounding garden area is underway.	Baseline						
			Forecast/Actual						



PROJECT DELIVERY

status and summary updates

Activity Name	RAG	Local Board Commentary	Timeline	2021/2022 - Current year			
				Q1	Q2	Q3	Q4
				Initiate	Preliminary design	Detailed Design	Tender Process
Te Ara Tahuna Cycleway - renew structures	Green - On Track	Current status: Construction work is underway. Next steps: Progress monitoring and complete the project on time.	Baseline	[Gantt chart showing construction from Q1 2022 to Q3 2022]			
Victor Eaves Park - renew premium cricket ground	Green - On Track	Current Status: Detailed design work is underway. Next Steps: Complete tender documentation.	Baseline	[Gantt chart showing design from Q2 2021 to Q3 2021]			
Waiake Beach Reserve – remediate access to boardwalk and refurbish storage shed	Green - On Track	Current status: Investigation for suitable location for new shed is underway. Next steps: Select the most suitable location and request quote from Contractor.	Baseline	[Gantt chart showing design from Q1 2021 to Q3 2021]			
Waiake Beach Reserve - renew seawall	Green - On Track	Current status: Construction work will commence in February 2022 due to the current COVID-19 lock down situation. Next steps: Arrange pre-construction meeting at the site in early February 2022.	Baseline	[Gantt chart showing construction from Q1 2022 to Q3 2022]			
Whangaparaoa Library - comprehensive renewal	Green - On Track	Current Status: Design work for the fresh air system is under way and awarded the contract for the Business Management System. Next Steps: Complete the design details with considering several options.	Baseline	[Gantt chart showing design from Q2 2021 to Q4 2021]			
Woodridge Reserve - renew play space	Green - On Track	Current status: Review result of consultation. Next steps: Procurement of play equipment.	Baseline	[Gantt chart showing design from Q1 2021 to Q3 2021]			

Memorandum

14/02/2022

To: Hibiscus and Bays Local Board

Subject: Manly Beachfront – Installation of bollards along The Esplanade – public consultation results

From: Sandra May, Programme Manager, Hibiscus and Bays Area Operations

Contact information: Sandra.may@aucklandcouncil.govt.nz

Purpose

1. To provide the local board with the results from the public consultation survey for Manly Beachfront – installation of bollards along The Esplanade.

Summary

2. A project to install bollards along The Esplanade at Manly Beachfront was approved by the local board as part of the 2021-2022 Community Facilities work programme (HB/2021/64).
3. The project proposed installing bollards along a 330m section of the reserve, to protect the reserve, trees and sand dunes from damage caused by vehicles.
4. In October 2021, works commenced and members of the public raised significant concerns about the project and restricting vehicle access to this area. Consequently, works were stopped.
5. To understand the overall impact on users, Auckland Council has undertaken public consultation. The consultation was conducted via the 'Have your Say' website between 22 November - 10 December 2021.
6. A 'Survey Responses Report' which has the full summary of the consultation material is attached to this memo. 176 responses were received.
7. A separate business report will be submitted to the local board if requested to formalise a decision on how to proceed with the project. Options for consideration are outlined in this memo.

Context

8. The project proposed installing round timber bollards along a section of The Esplanade at Big Manly Beach, between the Manly Sailing Club and Cross Street. Repairs to existing damaged bollards were also proposed between Cross Street and Beach Road.
9. Installing bollards is aiming to protect the reserve, trees and sand dunes from damage caused by vehicles parking in this area.
10. The installation of bollards will take away the majority of parking along this 330m section of the reserve and prevent vehicle movement on the dunes and around the trees.
11. The installation of bollards will not fully restrict parking along the Esplanade. There will be parking on the beach side of the road, in areas that will cause the least harm to the dunes and trees. The berms on the southern side of The Esplanade will remain as they are.
12. The eastern section, accessed from Beach Road will remain as is. There are currently no changes proposed and all parking areas will remain the same.

13. The full proposal for what was planned and the reason for installing the bollards is summarised in Attachment B - Consultation Proposal Big Manly Reserve.
14. In October 2021, bollards were scheduled to be installed and a traffic management plan for the duration of works was obtained. Due to concerns raised on site from members of the public when the digger arrived, the works were stopped.
15. The community started two separate petitions 'for' and 'against' the installation of the bollards. **'Save our Manly Beach Parking & Access'** and **'Stop Manly Beach from being a car park'**
16. To better understand the overall impact on the users and to gain greater insights into the views of the community, Auckland Council undertook consultation via the Have Your Say web page. The consultation was open from 22nd November to 10th December 2021.

Consultation Results

17. The consultation results have been summarised in a report and are attached as Attachment A – Final Report Manly Bollards HYS.
18. A total of 176 responses were received. 12 responses were received via email and 164 from the online survey.
19. Of the 176 people that provided feedback, 77 individuals downloaded/ viewed the proposal documentation to understand what was being proposed and why.
20. Of the responses received, 89.6% (155) lived within 5-10 minutes' drive of Big Manly Beach.
21. To the question, 'Do you support the installation of bollards along the beach front to protect the reserve, dunes, trees, and providing additional shaded grass area for picnicking, especially at high tide?' 43% of respondents were in support and 56% were opposed
22. To the question, 'The proposal to install bollards, will result in limited parking along an approximately 330 metre stretch on The Esplanade. There are no changes proposed to the eastern end of the reserve. Do you agree or disagree with the proposal?'. 41% of respondents agreed and 55% disagreed.
23. There were a large number of comments received providing further insight of the communities' views which have been included in the attachment.

Discussion

24. Community Facilities staff have outlined four possible options for local board consideration on how to proceed with this project.
25. The options are summarised in the table below:

	Option	Advantages	Disadvantages
A.	<p>Proceed with project as proposed:</p> <p>Installation of bollards between Cross Street and Manly Sailing Club.</p> <p>Repair existing damaged bollards and fence at the end of Cross Street. As pictured in Attachment C.</p>	<p>Immediate protection of tree roots and dunes as outlined in proposal document.</p> <p>Creating vehicle free areas for shaded picnic areas.</p> <p>Limiting opportunity to unnecessary vehicle movement and night-time nuisance.</p> <p>No changes to parking between Beach Road and Cross Street section.</p>	<p>Loss of car parking spaces on dunes/ grass areas under trees.</p> <p>Displacing car parking to surrounding berms and neighbourhood streets.</p>
B.	<p>Do not install bollards between Cross Street and Sailing Club.</p> <p>Repair existing damaged bollards and fence at the end of Cross Street. As pictured in Attachment C.</p>	<p>No changes to status quo</p>	<p>No changes to status quo</p>
C.	<p>Repair existing damaged bollards and fence at the end of Cross Street. As pictured in Attachment C.</p> <p>installation of 3 to 4 bollards around each tree trunk. As pictured in Attachment D.</p> <p>(Further specialist arborists input required – adding additional organic matter around trees and build up dunes)</p>	<p>Minimises the overall loss of parking</p> <p>Balance between protection of trees/ dunes and car park reduction</p>	<p>Doesn't achieve all objectives</p> <p>Only partial dune/ tree protection as vehicles can still drive on the dune and smaller tree roots</p>
D.	<p>Put project on hold and create a new project to undertake a service assessment that will identify development objectives and feasible long term management options for the Big Manly beachfront area.</p> <p>This work would need to be included at the appropriate time in a future work programme and would be delivered by the Parks and Places team. An LDI Opex allocation will be required to complete the service assessment.</p>	<p>No Changes to status quo.</p> <p>Takes a holistic view of the issues and challenges at Big Manly Beach and prepares a plan on how to address them.</p>	<p>No changes to status quo in the short term</p> <p>Delay in implementation of any protection measures.</p>

Next steps

26. Obtain subject matter experts input for preferred option
27. Prepare a business report for how to proceed following this workshop.

Attachments

- Attachment A: Final Report Manly Bollards HYS
- Attachment B: Consultation Proposal Big Manly Reserve
- Attachment C: Cross Street damaged bollards
- Attachment D: Tree protection examples

Project Report

22 November 2021 - 10 December 2021

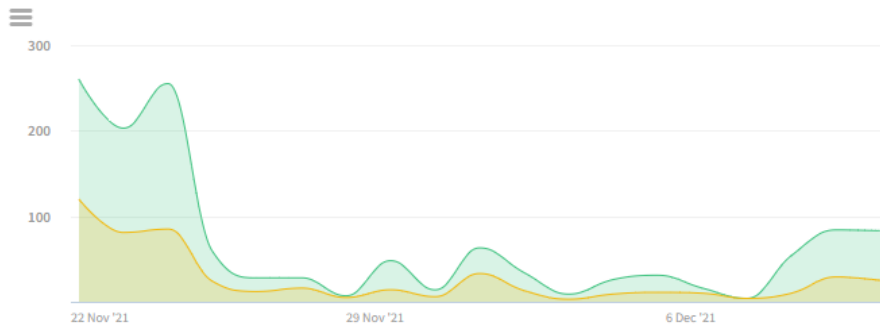
AK Have Your Say

Big Manly Beachfront, The Esplanade - Bollard Installation

Visitors Summary

AK Have Your Say from 22 Nov'21 to 10 Dec'21

DAILY MONTHLY



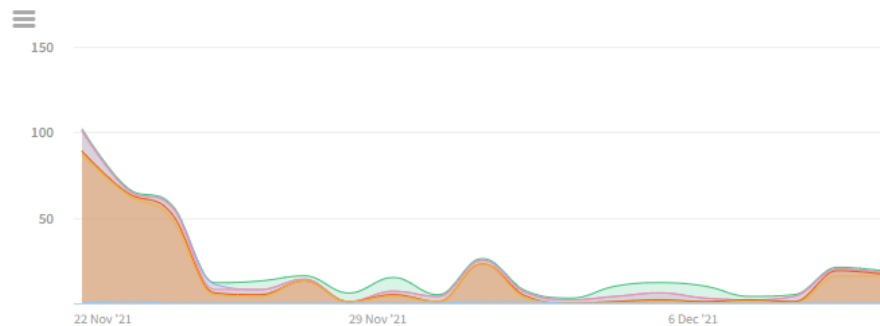
Highlights

TOTAL VISITS	MAX VISITORS PER DAY	NEW REGISTRATIONS
594	120	157
ENGAGED VISITORS	INFORMED VISITORS	AWARE VISITORS
165	304	548

Visits by Channel

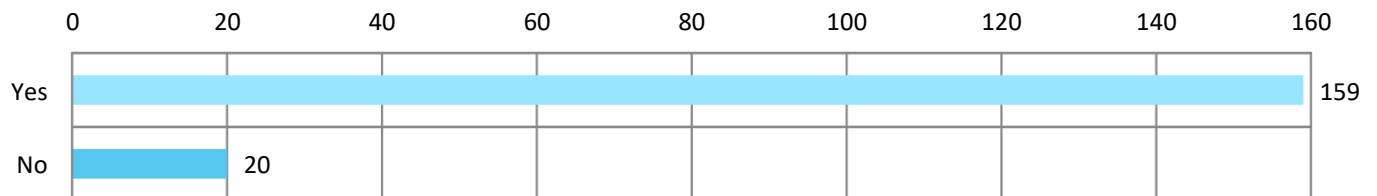
AK Have Your Say from 22 Nov'21 to 10 Dec'21

DAILY MONTHLY

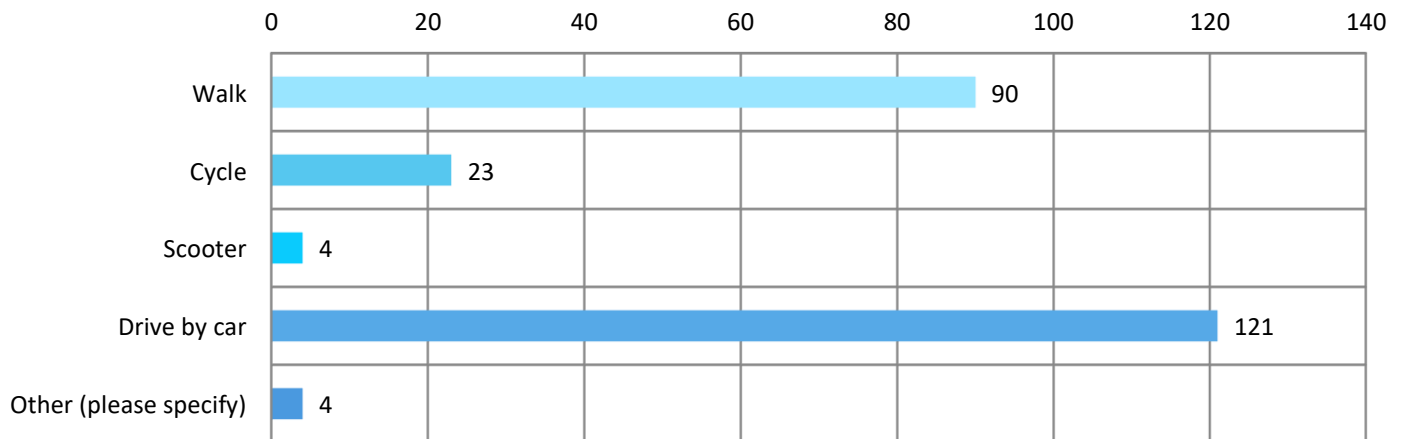


TRAFFIC CHANNEL	AWARE VISITS	INFORMED VISITS(%)	ENGAGED VISITS(%)
DIRECT	234	136 (58.1%)	95 (40.6%)
SOCIAL	286	137 (47.9%)	51 (17.8%)
EMAIL	3	2 (66.7%)	1 (33.3%)
SEARCH ENGINE	19	5 (26.3%)	3 (15.8%)
.GOV SITES	49	36 (73.5%)	14 (28.6%)
REFERRALS	3	2 (66.7%)	1 (33.3%)

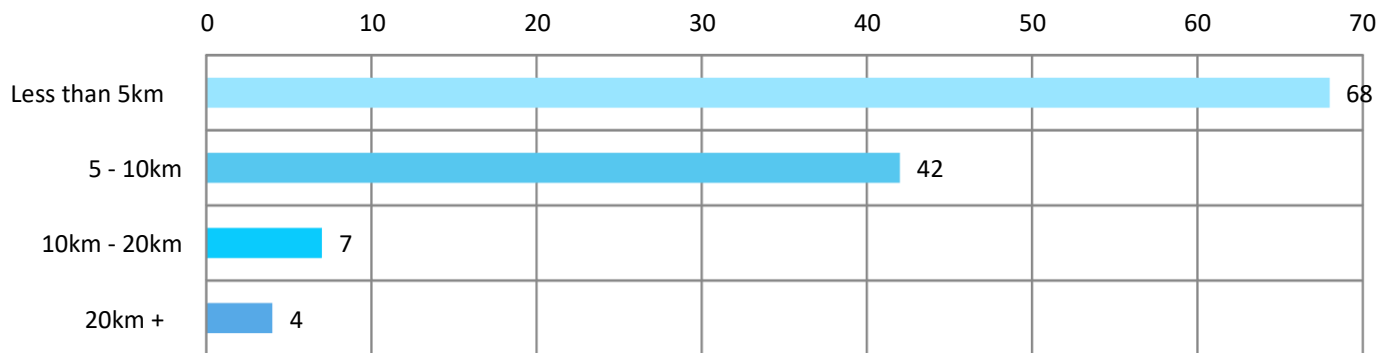
Do you live within a 5–10 minute drive of Big Manly Beach?



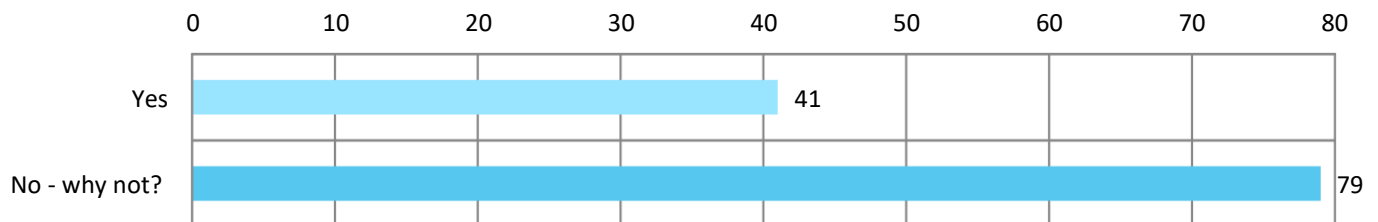
How do you usually travel to Big Manly Beach? (Select all that apply)



If you drive, how far do you drive to get to Big Manly Beach?



When you drive, are you ok to park within a 5 minute walk of the beach during peak times?



When you drive, are you ok to park within a 5 minute walk of the beach during peak times? (Other (please specify))

Need to carry water sports gear e.g. Paddle Boards or Kayaks

No because we have windsurfing equipment (as this beach is a renowned water sports beach) to carry and rig on the sand or grass.

Being main home beach for us, if we are coming here not for a walk but for a beaching with small kid implies we are taking bulky items with us and have this parking flexibility currently available is vital for us. 5min walk would be not convenient - it's local beach not a regional park after all.

I am 75yrs old and go windsurfing there. If I have to park in Laurence Street I will not be able to carry my gear to the grass beachfront to rig up.

Member of family with Back pain

limited parking in the area, especially during peak times eg (summer and weekends). the roads out there are not wide enough to handle parking on the roads, this is hazardous.

There isn't much parking other then on the beachfront without congesting the roads which would be a pain for everyone who live in this area

Because we have a boat

Why?? So not many beaches around the coast do we have to park then walk for 5min

It is difficult to carry all that is needed for a family day at the beach

Because I take my child and a boogy board and a blanket and a bucket full of beach things.

There will be limited safe parking.

The side roads will be blocked with cars on one side of the road will make the side roads of manly hard to drive through.

Young children and a disabled parent

I have 2 young children and a mountain on beach items to bring

I have young children and lots of beach equipment to carry, imagine trying to carry It all the way to the beach while trying to keep your children safe in a busy area.

Too much gear to carry

I have heart condition

Because there isn't enough parking at the end of the beach I go too. It's just off street parking.

Son with a disability

I have young children so being able to park next to the beach is very important! They come with a lot of beach stuff.

This area and the ability to park in the sun, hail and rain and see the beach is a huge local asset. The beach side below the current parking has not had bollards installed and would seem like a sensible preservation. Activity prior to removing public parking access.

There is insufficient parking on the neighbouring streets and it will be a longer walk than 5 minutes during peak times. I like to spend all day at the beach and take a considerable amount of gear with me - more than I would be able to carry in one trip.

I am a 3rd generation "hibiscus coast" local, with the 4th gen up and coming, my grandparents farmed in Arkles Bay, and my parents still live on Whangaparaoa Road, I remember when the road was gravel and the shops were on the other side of the road. I live in Stanmore Bay. We have been picnicing at Big Manly for over 70+ years and we love how we can drive up and sit next to the car and watch the beach go by, we have had many happy memories down at Big Manly and many mile stones. My parent are now in their late 70s would find parking "5 mins away" and walk too hard, and maybe not come and enjoy the beach that they have lived by all their lives next too. Also what "5 minute" walk are you talking about?? There is only a limited number of parks at the sailing club, and Larence St, Cross and Beach Street are all yellow lined / or no parking provided so where are you parking????? The best bit about living on the coast is the beaches do not take away any parking, as we are only growing in our population. The trees you are protecting, have been there 60+ years I know I have played in them. No one is saying don't, but protect them with fencings around them but let us still have parking its a must. I mix would best suit this situation.

Often sit in my car to appreciate the view, as have done for many years without seeing any beach dereriation

Kids and gear to deliver

Mobility issues - MS, CLL, MPN, arthritis

Difficulty walking far

I don't think it's fair to residents to take up all their off street parking

Personal and children attending

The best part about visiting manly is being able to have easy access, close to the beach and park up with my kids.

Because I usually have a windsurfing trailer with gear in that I need for water sports.

We have lived in the coast for years, we have never had to park and walk.... This sounds like the North shore over crowded over populated beaches... This does not fit in with the coasties culture.

Usually need to bring paddle boards or kayaks to beach

Because always have lots of equipment with us for the children.

I use the beach for wing foiling and have a lot of gear so walking 5 minutes would be difficult and having to leave gear unattended could result in it being stolen

I use recreational watercraft which I need to carry to the beach. Carrying a 30+ kg kayak any significant distance is not possible

There is not enough safe parking on the adjacent streets. I also have a baby and have to carry all things I need, to and from the car on my own. How do I set up a picnic area if I have to do multiple trips to the car 5 mins away on my own? I'd have to leave my belongings unattended (to walk back to collect things) where as if the car is only a few metres away from where I sit, no one will think about taking my things.

It makes sense to be beachfront so you have your picnic stuff and gear directly with you

Because often we stay for the day, therefore need things from the car.

Difficult to carry anything you'd need for a day outing. Also would need to take shoes or other things that you'd not have to take normally as you'd be close and on grass/sand.

Too much to carry to the beach

- More chance of my vehicle getting damaged.
- Contributing to dangerous amounts of traffic where children could run onto the road.
- more prone to thefts
- harder to carry gazebo food and other goods.
- more of a walk for my grandparents

No, being able to pull up directly up to the beach is where it's at, don't take this from us.

Because there isn't enough parking

Because it's more enjoyable especially on rainy/windy days to be able to stay and get the beer from your car. It's not ideal to carry food and stuff 5 mins to get to the beach not fair

The roads around the beach aren't really setup to be parking on, or walking once there are a lot more cars parking around them. Also with how popular that beach is it'll be a lot longer than 5 minutes for people who don't get the good spots.

I have 3 kids and it is very hard to carry all their stuff with me on a 5 minute walk all while trying to make sure they're not getting run over

On the Hibiscus Coast there are plenty of other beaches, therefore I would drive to another beach front parking spot, such as Arkles Bay

Elderly and can't walk that far.

I should not have to, if there are parks there I'd use them

I'll find another beach. Too over crowded

Because I like to park on the esplanade and watch the yachts with my 90 year old father .

Because when visiting a beach I like easy access to get my wind toys off my ute, throw the kids toys out of the car all with ease and not have to worry about carrying gear. That part of the beach is amazing and I wish all beaches were more like it.

I am elderly

I like to have my car close and sit in it and and think sometimes looking at beach

I have young children and really value being able to have the car close.

This question is a flawed one. It's not a simple yes or no nor about answering about oneself. I have an older arthritic dog and choose this beach for the access at the beachfront so we do not have to do an extra walk and in winter the car is close to get back to quickly in bad weather. Elderly and those with young kids also for the same reasons.

Because I have kids and prefer to be closer, it's a lot safer

Because there is no where to park..!!! We have been going to this beach for 30 yrs..p

cause i am old and also have young grandchildren i take to the beach

Because I will have driven there transporting watersports equipment for use on the beach or in the sea, to carry multiple loads from a carpark 5 minutes away is not feasible.

To much stuff to carry usually with kids running around driveways

I like to park by the beach we always have.

I have 4 young children, it is not easily do-able to safely take them along the roads, all required beach equipment and supplies/food in tow

Because if I wanted to park 5 minutes away, I would walk. The beauty and utility of parking on the berm is to sit in the car with takeways or to have a "tailgate picnic".

Have watersports gear, either windsurfer or paddle boards.

I go there to do water sports which require me to park next to the beach

I am a Windsurfer, having to rig and carry is not feasible. It's a social place where people gather play and exchange their knowledge. Often I have to change a sail or fin. Not being able to access it right by the beach is not feasible.

Because I carry windsurfing equipment

Traveling with a lot of sports equipment. This would mean multiple trips back and forth, leaving equipment unattended.

I'm a windsurfer. I park close to the beach so I can set my gear up. I've been doing this at Manly Beach for 20 years.

I have water sport equipment that requires assembly. That is not feasible to carry over distance.

We live on the Esplanade

Elderly

I like the parking that is currently provided at Big Manly Beach

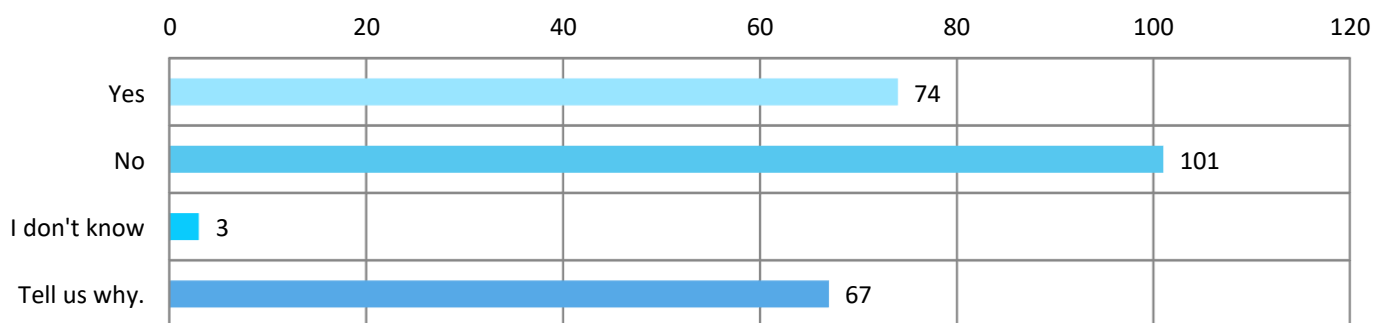
Not when there is plenty of parking on the beach front

Normally a quick visit to walk my dog

Because I have too many things to carry like standup paddle board, sporting gear, picnic gear, food, beach umbrella, beach mat etc

I like to windsurf there so need to park as close as possible to the beach to unload, rig up then pack up when finished

Do you support installing bollards along the beach front to protect the reserve, dunes, trees, and providing additional shaded grass areas for picnicking, especially at high tide?



**Do you support installing bollards along the beach front to protect the reserve, dunes, trees, and providing additional shaded grass areas for picnicking, especially at high tide?
(Other (please specify))**

I suspect this has more to do with complaints from the beach front property owners than the councils concern for the trees that has prompted the bollards to be installed.

Regardless, if the trees and the dunes are the genuine concern then I feel a more managed approach of roping off the affected areas to let them regenerate should be trailed first rather than a complete blank ban. Furthermore, there is not enough alternative parking available to simply close this area off. The available parking at the sailing club is often full due to sailing events which leaves very little alternative parking for the general public.

Finally, this beach is a very popular water sports beach, particularly with paddle boarders, kites, windsurfers and wing surfers. Being able to park and rig by the beach makes this beach a preferred location.

If people can't park on the beach, where will they go? The neighbouring streets are too narrow, there's no where to put in extra parking.

I understand the importance of protecting our public areas and the environment but as mentioned before there isn't many other spaces provided for parking, this has also been a tradition that has happened for generations

Because the stormwater outlets are doing far worse damage to the dunes than any car has ever! Cars parking there hasn't cause any damage whatsoever and I haven't seen a single study to support the proposal

Will cause limited parking and neighbouring roads will get packed

If maintenance was done in this area, it would negate the need for bollards. Eg the photo of the ute and trailer parked over the wooden bollard and fence. It and a number of other existing bollards in the area are breaking from rot and at times damage. If these were maintained it would reduce the problem. Eg poss some 40 bollards around Manly Park Reserve have significant rot and damage from weed eaters. Secondly the beach front of this area I have grown up with as a kid. So over the past 40 plus years. Not a lot of trees or sand dunes have disappeared un like the beach front of the Orewa reserve after a council engineer recommended removing the rock wall. Also families with picnic things and young children should not have to be crossing main roads, even with crossings this will always be a massive risk that know one should be taking with the lives of young children. As some home owners are already doing.. even though it is public space, they have installed railway sleepers, planted gradens etc and in Tindalls Beach (96 Tindalls Beach rd. New build) built a new concrete block wall across public land. Why after some 40 years (went to Wgp Primary school than Orewa College, now my kids are grown up) the only signifigant damage is home owners and council chopping trees down etc. Lastly that space belongs to the public and not beach front home owners wanting pretty views kept for them selves.

The proposed location of the bollards goes beyond protecting the trees and dunes. There is ample room to have bollards around the trees and then on the dune edge. This would strike a balance between protecting nature and allowing the public to continue as they have done for many years - i.e. park up for a day at the beach or eat dinner in their vehicle beachside.

Yes please. The protection of this precious toanga is so important. Please do everything you can to protect our beaches, native trees and wildlife.

I think some parking still needs to be provided, as in the proposal. I do worry how people will pass or turn around on this very narrow dead end road - that usually happens on this grass area. But I like the idea of the trees being protected and grass areas being available for picnickers.

It would be so disappointing to see this happen as Manly beach is a local beautiful place that people gather at all times on the year. The parking on the grass is essential for a lot of people like the elderly and young families. Putting up the bollards would cause chaos on the surrounding streets and would ruin the vibe of Big Manly beach which has been the same for so many years with so many generations experiencing the same beautiful place together

I agree that there is sand dune erosion on the Big Manly beachfront caused by motor vehicles driving to the seaward side of The Esplanade - and, yes, the tree roots are being exposed.

We have been parking on the grass at Manly beach for years. Its much safer for our family with young children. We always respect the residents and pick up after ourselves.

The back roads will become clogged and it will be much less convenient to visit Big Manly.

Huge local asset. No material degradation in recent years. Other mitigations could be put in place instead of bollards. Also the first attempt lacked thorough consultation which has infuriated local beach users.

i have been travelling to Manly Beach for 20 years and parking under the trees. Minimal damage, if any, is being caused by cars parking under the trees. No trees have died, the dunes - if you can call them that - have not collapsed, so how come it is suddenly a problem!! How do car tyres cause a problem for the tree roots - there is likely to be more damage caused by numerous deck chairs with people leaping in and out of them all day. Maybe we are going to be restricted on the style of deck chair we can use in case the chair legs dig into the ground and damage the roots of the trees! High tide is for a very short time - I have never seen any issue with a lack of space at high tide times. Some people chose to sit on the beach rather than on the grass area - there is always space for people - I have been doing this for 20 years, so have been able to observe any changes, including weekends when it is busier at the beach.

As above, " I am a 3rd generation "hibiscus coast" local, with the 4th gen up and coming, my grandparents farmed in Arkles Bay, and my parents still live on Whangaparaoa Road, I remember when the road was gravel and the shops were on the other side of the road. I live in Stanmore Bay. We have been picnicing at Big Manly for over 70+ years and we love how we can drive up and sit next to the car and watch the beach go by, we have had many happy memories down at Big Manly and many mile stones. My parent are now in their late 70s would find parking "5 mins away" and walk too hard, and maybe not come and enjoy the beach that they have lived by all their lives next too. Also what "5 minute" walk are you talking about?? There is only a limited number of parks at the sailing club, and Larence St, Cross and Beach Street are all yellow lined / or no parking provided so where are you parking????? The best bit about living on the coast is the beaches do not take away any parking, as we are only growing in our population. The trees you are protecting, have been there 60+ years I know I have played in them. No one is saying don't, but protect them with fencings around them but let us still have parking its a must. I mix would best suit this situation. "

I have lived and visited Manly for over 50 years. There is no erosion. How far back do your records show the beach dune measurements?

Idiots in 4x4's driving over the dunes, never used to be an issue till they got popular

It is lovely to just park
And enjoy the view. It seems that the houses on the beachfront will claim this space as their own.

I think bollards could potentially damage the tree roots - could quarry rocks be an option (similar to Te Arai.)

Because the erosion is minimal and had been for 50 years. Because I've seen in the UK when self vested parties such as the beach front landowners erode the rights of the public. The trees are extremely robust. They are not affected by cars or sand.

I think it's a fantastic idea! It should have been done years ago.

Not enough parking to enjoy the beach without it

Because there is no clear reason provided by the council or alternative parking arrangements made to access the beach. We have small children and there are inadequate parking facilities already to cater for younger families where children can walk a short distance to the beach.

The parking is limited on surrounding streets. This is an important parking area for the community especially people who have mobility issues or families bringing gear with them. Rich people who don't want their view spoiled should get over themselves and prioritise the needs of the community. This street has already had ridiculous money spent on judder bars, yellow lines and plastic bollards on the street. This is corrupt and can't be justified with references to erosion etc when it is very clear the real issue is that the homeowners want to keep the public out.

I've lived on the coast for 30+ years - all our beach fronts have been fine. Tindalls, matakatia if you want to preserve the bank - put up some rope on the dunes part. But it doesn't need to be where people have been parking for years.

I don't believe cars are damaging the dunes. If we want to provide more shaded picnic spaces during peak times then I'm very happy for there to be no parking at the beach between certain times - have the area patrolled for a while issue some fines and change behavior at peak times.

This does not damage the dunes which on the slope down to the beach. If you want to protect the dunes then I suggest putting bollards and rope around the dunes and not limit public access.

Makes more sense installing a small retaining wall on beach side of grass reserve which would not only stabilise the dune but still provide parking and access for people. Restricting parking will also create havoc in surrounding streets and pose more danger to pedestrians lugging their stuff to the beach.

I do not agree because A huge contributing factor to the dunes perishing and trees being damaged will be the 4 or 5 huge storm water drains finishing at the beach. After every storm or big downpour there are wash outs, human faeces and dangerous drop offs from the large amount of water flowing through.

I also do not support because this is going to create allot of cars parked on the road making it harder for our older citizens who enjoy parking at the beach, it's going to be more dangerous because of children being on the road and running out from cars, more cars will be damaged due to the small amount of road left in the middle plus people parking so close to each other.

Lastly my family, friends and I have been going down and parking on the grass for generations. Where we enjoy eating food together, socialising, watching the newer generations play and learn water sports or beach style sports/activities. It's a place where we go to relax after work, have a quick swim and sometimes because of how comforting the environment is down there we discuss our mental health. I have multiple times with friends that have contemplated serious harm to themselves and asked to meet down at cross roads for a talk. Multiple times have had deep conversations T the comfort of parking at our local beach.

Because digging holes through the tree roots won't be protecting the trees. It will be causing active harm, whereas driving cars over the ground causes no damage at all

More damage was done to the trees while the digger was there than over 30 years of cars parking there. Maybe put Holland's on edge of sandunes and leave the grass space for cars

We have already seen the small works to start the bollards has done more damage (in a couple days) than has been caused by people parking and sitting there over all these years. Generally it is enjoyed by locals of all ages who do well to look after it

Protect the trees, but don't prevent those with disabilities or limited mobility from being able to park on an elevated section of grass and enjoy an ocean view.

The council has given no significant evidence that beach front parking has had any impact on dunes, reserve, or trees. The way this question is asked morally tricks members of the community into believing being against this installation is damaging to the beautiful native wild life.

Following that, Big Manly beach front parking has been a tradition for friends and whanau to enjoy the local natural beauty of Aotearoa. I would like to bring up the Maori health model, Te Pae Mahutonga. Particularly Waiora (environment) and Toiora (Healthy life styles). Firstly Waiora the connection between people and the environment, though this instillation main focus is to protect the dunes, the placement of storm water drains (of which have tendency to mix with sewage and pollute the beach) is more likely to cause damage to these dunes rather than the harmless parking of vehicles on the grass. The addition of these bollards impacts the direct access to elderly and disabled from seeing takutai moana. Which is councils responsibility to ensure Maori and the wider community have access to the beach front. It's a beautiful beach and all measures should be in place to reverse it for future generations. However without significant investigations, scientific proof and studies (which inherently would cost tax payer money) the removal of parking on the grass will severely impact the connection between people and the beach.

Secondly, Toiora (healthy life styles), I could list hundreds of health benefits that come with the access of parking on the beach front. However its evident that easier access to the beach encourages physical exercise, improvements in mental health, as well as holding a cultural importance for people of many different back grounds, cultures and religions.

I believe an investigation of both the impact of cars parking on the dunes, the impact of storm water drains on the dunes, and the polluting of the beach due to the storm water drain have to be addressed before removing such a significant aspect of life here on the hibiscus coast.

Thank you.

I've swam at that beach for more than 30 years and used to walk there when living closer, now I can't walk very far as have a very bad hip and knee.

There's too many cars and not safe for children walking along the road, it's ruining the dunes and gets really busy there with teenagers and loud music

I live in Laurence St and walk the beach (and esplanade) frequently. I believe the current situation, with some minor improvements, works fine.

We need that parking in peak times. From summer days to stormy windy days where wind toys enthusiasts cover the dunes with all there gear. If you limit the parking you destroy the easy access the thousands of wind toy enthusiasts come to enjoy. Young families can park with ease, its the way the beach should be.

I agree with protecting the reserve but the damage is caused by a few hoons at night. The general public drive on it with respect.. Why not a chain across after 9pm?

There is plenty of room on the beach and around the trees for picnicking even when the cars are there. My family and I have been parking there and enjoying a day at the beach since before I could walk and I hope to do the same with my children. Having the car close is a HUGE deal for parents

Again another flawed question and not simply a yes/no. I am not against protecting the environment and it would be nice to have the grass area free of cars in some parts of it. The issue is this beach does not have adequate or suitable alternative parking or access for a small suburban beach. The streets are narrow with only one street at the Eastern end and tiny Cross St in the middle that are close without then having to try and park on the main Rd or way over by Manly Park. The parking along these narrow streets makes for congestion, inconvenience for residents who will have no access to street parking and cluttered with cars in front of their houses all day, and people having difficulty getting dogs, kids, elderly, beach gear, windsurfers, boaties etc out of vehicles on the roads and then trekking to the beach. When the boat club has things on, the parking around that area is already full.

I am concerned that there is a lack of concern by many of the public for the Hibiscus coast beaches and parks. It would appear that many see an expanse of grass or indeed as in the case of my local beach, Hatfields Bay, the beach itself, as suitable places to park vehicles. These recreational areas should be free of vehicles from both a safety and environmental point of view.

Because I believe the trees and dunes need protecting and give more places to picnic

The trees have doubled in size in the last ten years..the beach is fine.my kids get changed in car as no facilities close by n it shades our cars. This is just ridiculous!! We have picnics under the trees! Many locals gather for picnics etc to unite and catch up with each other..this is just snobs trying to keep it to themselves.. I over look this beach n enjoy the kite surfers, and everyone gathering.

We have lived in Manly since 1995 and the beachfront to be honest hasn't changed at all. I feel by placing bollards will mean our elderly population who travel to the beach by car because they are unable to walk far will no longer be able to, cars will park along the beach front beside the bollards and on opposite side causing terrible bottle necks as it won't be policed. Dangerous for small children as cars travelling on the road will have no vision of them due to the line of parked cars on either side. Yes, it will happen on the bollard side.

Despite your loaded and leading question the bollards and elimination of parking on the accessible grassy areas between the trees do not necessarily provide greater shaded areas for picnicking. Vehicles are usually parked in between the trees with people sitting on the grass to seaward of the vehicles, Vehicles are only parked on those parts of the grass that are accessible from the road, many areas, especially in those areas that you deem to be close to the tree roots and requiring protection are steep and inaccessible to vehicles as the trees have captured the moving sand over the years. There is no visible damage to dunes or erosion of the foreshore in this area of the beach, that is an utter fabrication intended to force an outcome desired by a small minority of "concerned locals". The photos provided of exposed roots are a very small portion of this beachfront area and could be managed by covering with more soil and material, the trees themselves are perfectly healthy. The east end of the beach cited as the ultimate condition of this proposed area is an entirely different scenario with no trees and a much lower lying area, money would be better spent building this up and seeding it.

Manly beach is a great spot for all water sports and installing bollards will restrict access to all windsurfers, kite-surfers, wings, dingy, etc. There is no practical way of parking and setting up sport gear if bollards are installed. Different access on the Esplanade are currently used for different sports and different levels.

We need to do everything we can to stop people parking wherever they want and damaging the dunes and the beautiful trees. And also it will reduce the anti-social behavior at night time along the beach.

I walk the Beach every day and the damage to the dunes is getting worse by the week, immediate action is needed

We have been visiting Manly for many years the trees and dunes are still the same nothing, no erosion or tree damage so why change. ??
It seems the council could spend our rates in a more valuable way.

Waste of tax payer's money which only benefits the wealthy beachfront properties. There is not enough parking as it is!

You are solving a problem that does not require resolution. Nothing has changed for the past two decades and therefore there is no sudden need for change now - I see no evidence of why sudden "protection" is required when considering this. (Yes, the population has increased, but the space is self-limiting in terms of utilisation anyway.)

Across the world our natural landscape is dying because of man. Look at how nature experienced a resurgence when the world went into lockdown. Manly beach is a beautiful and unique gift to us which we will also destroy or make barren by continuing to park cars on the grass close to the beach. There are myriad roads nearby where vehicles could be safely parked. Grass is for people to play on, picnic on, make tents on and enjoy. It is not for parking vehicles - most of which spew foul and toxic fumes into this pristine environment as well as destroying the grass and tree roots. It may have been ok 10 or so years ago, but as beautiful spaces like this begin to attract more people they should be preserved and protected from being destroyed by the increase in use. A natural space is beautiful and increases the health of the people, a natural space covered and scarred by vehicles only adds to ill-health and anxiety and conflict. It is wholly wrong to use this space as a car park, we need good governance and guidance to protect those seeking to connect with people, children and nature from those who simply want to drive their car as close as possible to their destination regardless of the harm this does to their health (walking a bit is good for you) and the health of the environment. If cars keep parking there the area will degrade to sand and dust and then fewer people will find it a relaxing and healing space. PLEASE, it's 2021, New Zealand is a green and forwards looking country, let's step up to the mark and be the custodians this majestic country needs. Many thanks and blessings to you :)

It would be great to see the grassed area being used by people to enjoy as opposed to a car park. When on the beach it looks pretty horrible just looking back at loads of cars. There is also a problem with dangerous driving coming away from the beach onto cross street where often people will drive fast in areas where children are walking. There seems to be a big problem with people driving 4wd cars over tree roots and I have even seen people drive down from the grass through the dune onto the beach. It would be great to see these areas protected as unfortunately people's behaviour is not being managed in this area and will lead to this area being spoilt for generations to come. All because people want to park right against the sand rather than walk less than 100 metres. The beach and forefront needs to be protected for the many rather than being spoilt by the few. There is plenty of parking in the surrounding area. People seem to want to drive to this beach because they can park on it, there are many other beaches available if they feel there is a lack of parking space in the future.

I can see this creating more of a issue if they are

installed. First of all we get speed bumps as apparatley we all speed. Now we can't park on beach as home owners don't want there views disturbed . Don't buy houses in this area if you are not willing to share. It is the only beach on the coast that you can park on. You are asking for more problems buy putting them in. Roads surrounding beach are going to get more clogged. The grass and trees are fine, best they have looked in years the damage that is happening is from storms which is nature

The dunes are not under threat. The purpose of the bollards is to improve the privacy of the residents on the beach front. This should be be indulged at the expense of other rate payers.

We feel its more important to have adequate parking on such a bbusy beach especially in summertime

with the current use there is still plenty of space for picnicking

I know it is important to provide parking especially for people with mobility issues. However the erosion is very apparent and only getting worse we need to preserve and conserve for future generations

Bollards need to be installed along the centre line of the berm, allowing people to picnic along berm frontage. stopping vehicles ripping up berm perhaps parallel parking for single vehicle next to road

Having been a resident of Manly Beach for 60 years I can tell that the few exposed roots of Pohutukawa trees will not affect there growth they are growing fine and the grass has been like that for 30 years

At the moment noone can sit on the grass as it is covered with cars

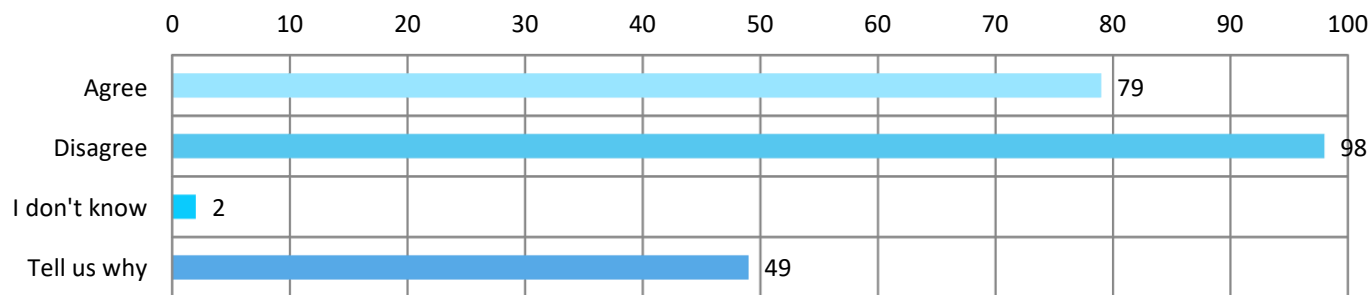
1. The Proposed alignment of the bollards should be reviewed, currently alot of the area that will be bollard off is not near trees and already has bollards to protect the reserve, dunes, ref Image E, Opposite 41,43,45 The Esplanade their is at least 7 metres distance between the trees and the dunes are already protected by recently installed bollards (not shown on the picture as the picture is out of date).
 2. The proposed parking bays should extend further to the beach to allow cars to park to drive into the spots and therefore make it easy to turn around, with the current proposed parking bays there is no area to turn around the only option is use residents driveways.
 3. There should be more parking bays to allow access to this popular part of the beach otherwise cross street will get too busy as there is no other parking to give access to the middle of the beach.
 4. Current beach access near the manly sailing club is dangerous as its very busy with cars and tractors using the boat ramp to launch their boats/jet skis, therefore families need a safe place to access the beach which is currently the Esplanade.
- Overall I support some bollard installation but not to the extent that its currently proposed we need car

spaces available for families and disabled on the beach side of the road to allow for safe access which we all expect.

Because the beach is only ever busy for 4-6 weeks of the year in the summer holidays and the rest of the time it is only busy on the weekends, and for the majority of the year the beach is quiet except as used by the locals. The trees are not damaged and provide fantastic shade. There hasn't been a problem before so why fix something that is not broken.

People will park on the berms immediately in front of their properties and that is likely to turn those areas into sand and shingle. This in turn will blow into the houses more so than it does now.

The proposal to install bollards will result in limited parking along an approximately 330 metre stretch on The Esplanade. There are currently no changes proposed to the eastern end of the reserve. Do you agree or disagree with this proposal?



The proposal to install bollards will result in limited parking along an approximately 330 metre stretch on The Esplanade. There are currently no changes proposed to the eastern end of the reserve. Do you agree or disagree with this proposal? (Other (please specify))

As above. There is not enough alternative parking available to simply close this area off. This will also likely force people to park on the grassed areas directly in front of the beach front properties and down the very limited areas on Cross St leading to further complaints.

This weekend 20/21 Nov there were more than 50 people out wind and wing surfing. Why do you want to stop this happening? Surely this is why people come to live on the peninsula.

Families have been parking there for years. All for protection but not with limited parking.

I do not believe that installing ballards would solve the proposed problem at all the houses who look out towards the beach would not want their view to be blocked by these bollards, also not a environmentally friendly option

Because the cars are not causing any damage. The stormwater outlets cause more damage than any car has.

As explained above. Why not use turf blocks, maintain existing bollards (not done at present) perhaps even temporarily fence off areas in winter to allow growth. The digger on site did more damage to roots of trees than some cars. Maintenance of this area will be much better in the long term. Could even plant some more trees.

As per previous question.

The proposed location of the bollards goes beyond protecting the trees and dunes. There is ample room to have bollards around the trees and then on the dune edge. This would strike a balance between protecting nature and allowing the public to continue as they have done for many years - i.e. park up for a day at the beach or eat dinner in their vehicle beachside.

I also suggest that the dune grass is 'over mowed' i.e., the grass should be mowed/trimmed to not less than 150mm high above the ground. We, in NZ, have a practice of mowing our lawns very short - that is NOT appropriate on the beachside dunes. Residents must not be allowed to 'correct perceived shortfalls' once the Council contractors have been assigned the revised standard. The house to the West of the Ladies Miles beach access does NOT mow past their boundary = great!

Use the Bern already there to create parking.

Because reduced parking just pushing parking back onto other streets and the likelihood is then this becomes the norm in other areas such as Arkles Bay which is already a mad house for parking for local residents and this is not a precedent I want to see perpetuated everywhere. Once it is a good idea at one beach then council we deem it the same for the others without consent.

If we can park at eastern end why can we not park down esplanade end. Can still use other mitigating measures to protect the dunes without removing parking and this local asset.

As above and I don't think it is anything to do with the dunes - I believe it is the local residents who have come up with this clever idea to stop cars and traffic in front of their homes.

As above, its the same issue, no matter what questions to put to it, " I am a 3rd generation "hibiscus coast" local, with the 4th gen up and coming, my grandparents farmed in Arkles Bay, and my parents still live on Whangaparaoa Road, I remember when the road was gravel and the shops were on the other side of the road. I live in Stanmore Bay. We have been picnicing at Big Manly for over 70+ years and we love how we can drive up and sit next to the car and watch the beach go by, we have had many happy memories down at Big Manly and many mile stones. My parent are now in their late 70s would find parking "5 mins away" and walk too hard, and maybe not come and enjoy the beach that they have lived by all their lives next too. Also what "5 minute" walk are you talking about?? There is only a limited number of parks at the sailing club, and Larence St, Cross and Beach Street are all yellow lined / or no parking provided so where are you parking????? The best bit about living on the coast is the beaches do not take away any parking, as we are only growing in our population. The trees you are protecting, have been there 60+ years I know I have played in them. No one is saying don't, but protect them with fencings around them but let us still have parking its a must. I mix would best suit this situation. "

Will make the surrounding impossible. Those roads are not designed to take the overflow of parking that will result

Do think there need to be disabled parking at the far end of the beach where there is already beach front parking

Parking should be accessible to everyone

I love the fact that Manly offers beachfront access to park, picnic, and to enjoy beautiful evenings and afternoons with my family and kids.

It's already gravel and sand, and serves as a warning for what the rest of Big Manly could turn into. Perhaps there could be handicap and priority parking for people with less mobility closer to the beach.

We pay taxes and need alternatives to negative impacts on those who pay the council's bills.

I agree with protecting the trees and dunes however having easy access to the beach is also important. Why can't parking be made available on the berms? This could be timed out say until 8pm in the summer to avoid antisocial behaviour with cars at night?

Because parking is limited already on surrounding streets which have judder bars and double yellow lines.

Installing bollards does absolutely nothing to save the trees or dunes, it only serves the 5- 10 homeowners living on the proposed location.

Bollards are going to cause traffic jams on road and half the roads around the beach have yellow lines or already have enough cars parked on them so would cause major traffic and upset family not able to enjoy the beach

If there are no changes to the eastern end then that contradicts the reason to 'protect' the dunes. Why protect those dunes but not the eastern end ones

I have lived in Whangaparaoa for over 30 years and the sand dunes have looked exactly the same since I was a kid. Vehicles aren't causing damage to the trees. Putting in those stupid bollards will be worse than driving cars on the grass around them.

There is no other place to park for people like me who have a lot of stuff to the beach and also older people who can't walk very far and that's their spot to go and relax and unwind

Protect the trees, but don't prevent those with disabilities or limited mobility from being able to park on an elevated section of grass and enjoy an ocean view. The proposal takes this away and doesn't appear to consider those with mobility constraints as far as I can tell. This is why I disagree with the proposal.

There is never enough parking there as it is now. Never seen any children on the grass, they are on the beach and in the water most of the time. It's usually older people sitting there in beach chairs which you can't carry that far when older. Never seen any issues with the trees etc either.

I disagree that vehicles are eroding the dunes. Some sections of tree root are uncovered, and have been for years with no apparent harm to the trees. This could be easily fixed by dumping some sand/soil on them and grading it smooth.

Manly has always been regarded as a safe family beach. Where else can you sit in your car and watch

your kids swim. At close to 80 years old, I think it is great to see families enjoy this wonderful safe beach. We should be encouraging its use

Same as above. People will then have to park in Lawrence street which will be a nightmare if it's full up with cars. That's a very busy street.

Again a terribly worded loaded question asking for comment on two separate areas . I don't believe cars have damaged the environment in the section bollards are proposed and don't agree due to the reduced vehicle access. I do support leaving Eastern end as is. I would support not having access at certain busier times and at night to prevent disorderly antisocial behaviours from certain groups, drinking etc. The issue is this beach does not have adequate or suitable alternative parking or access for a small suburban beach. The streets are narrow with only one street at the Eastern end and tiny Cross St in the middle that are close without then having to try and park on the main Rd or way over by Manly Park or other streets further back. The parking along these narrow streets makes for congestion, inconvenience for residents who will have no access to street parking and cluttered with cars in front of their houses all day, and people having difficulty getting dogs, kids, elderly, beach gear, watercraft etc out of vehicles on the roads and then trekking to the beach. When the sailing club has things on, the parking around that area is already full. Importantly the bollards would not be needed or wanted in off peak or winter periods especially for people accessing the beach that require to park up close such as for watersports - windsurfers, paddle boarders, kayaks etc, dog walking, elderly and those with small children (and dogs) etc. for which this beach is utilised a lot for. There needs to be a more effective solution that could be time/season relative or additional and adequate parking. The areas you are proposing to keep for parking are inadequate. They appear to not allow for angle parking/ front end to the beach, but parallel parking - that simply will not work there, especially at the end of Cross St where you have a sloping ground and all sorts of vehicles/tractors/trailers utilising that grass area. If bollards are to be installed then they MUST be placed as farther back towards the beach to allow for vehicles to drive straight up and the most room for parking for maximum car numbers.

My kids and all their friends gather together to catch up here..they have done it for 15yrs n still do..limited parking!!! 😊 what a joke..it will leave no parking n a private area for a certain select few who have moved into the beach frontage in the last 5 yrs n dont like anyone l front of their houses..!!!!

The reason people park in this area is to access this portion of the beach, kitesurfers, windsurfers, wing foilers have all been parking here and accessing this area for many years with little or no increase in damage or deterioration of the foreshore - in many areas the condition of localised exposed areas has improved over time with natural regeneration and vegetation/dune movement. If the real issue is people who have moved in to houses behind the esplanade that want the foreshore area to be their own private extension to their garden without vehicles parked and young people enjoying themselves then I would be saddened to see this supported by the council and may rates.

I like parking my car by the beach and picnicking in front of it.

Eastern side, Cross Street access and Western side of the Esplanade are all used by different watersports users. Restricting access and forcing everyone in the same spot will not only create parking congestion but also serious health and safety issues on the water where all users will be in the same area.

You only have to look at the photos, then look at the photos of the eastern end of the beach to tell you why the Bollards need to be installed asap

We should be able to park anywhere on a public beach. Limiting parking here would only clog up the streets with cars

No to the bollards!

Nature needs to be protected from humans. Otherwise humans will destroy it and when it is not desirable any longer will then move on to the next beautiful space to do the same. We need to be saved from ourselves. Humans cannot live happy peaceful lives while the destruction of pristine public spaces gifted to us by mother earth are laid to waste. It may be an unpopular decision for the adults and their utes, but walkers, runners, swimmers, cyclists, dog walkers of all ages - and most importantly - the children who will inherit this earth will be forever grateful to you for protecting this very small piece of earth. There is enough tarmac close by that stays unused for parked cars, but surely that is where cars should be parked if we want to leave a good legacy for the next generation.

Quite UNnecessary! Control for the sake of control. If the sand dunes, trees etc are the real reason for restrictions, then make parking spaces and repair the dunes from the beach side. Plant more trees and see what the locals say then!

There is plenty of parking in close vicinity to the beach. If cars end up parking on the road one Street back this will also have the benefit of slowing traffic. There have been a number of complaints to police from local residents about the dangerous driving along this road. If more cars park along here at busy times this will help slow the traffic, this would be seen as an extra benefit and possible make the road safer. Potentially it may also help make the area less attractive to the dangerous drivers who come to the area to drive on the beach.

We were told that bollards were going in at the end of the esplanade, outside our property, which is already a bottleneck in the summer with it being a dead end road with people trying to turn around or back out with boats - just a nightmare - no signage with dead end or no turn around

I believe that the current space retains the rights of New Zealanders to enjoy Manly's natural environment I don't believe there is significant damage being caused

I think the eastern end of the beach has already been degraded considerably What was a grass berm has turned quickly into a gravel pit - very unsightly it should be allowed to regenerate.

Correction there is no parking on eastern side from Cross Street side you can only 'walk it'. Beach Road side has limited parking

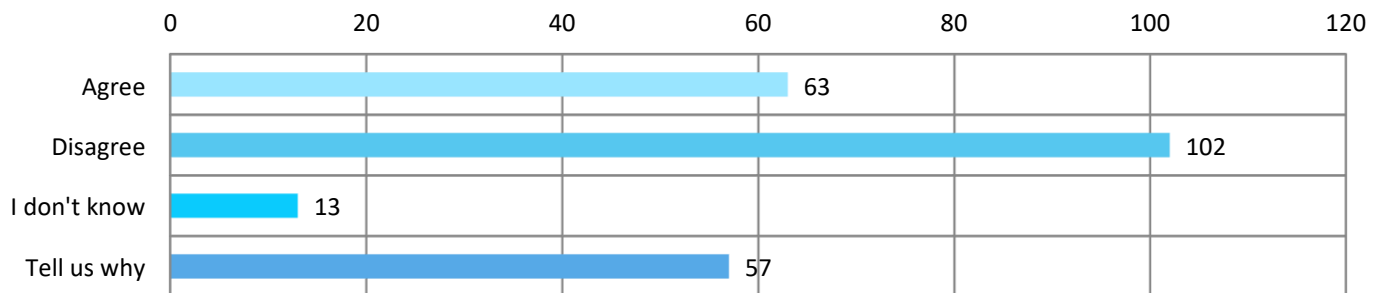
The car parks along the esplanade are essential for families. To remove them and force people to park in surrounding areas would be chaos for residents and visitors

Yes I agree to no change to the eastern of end of the reserve, however don`t agree with the amount of limitation on the 330 metre stretch as per previous comment

There are bollards along most of the rest of the beach. Around sailing club car parks full over weekend all seasons.

Because it is the favoured part of the beach - opposite the pontoon - and popular with families who need to keep an eye on their children. The cars are needed to carry many things that families need. Grandparents can sit in the shade and watch. There has always been enough room. If we loose this parking then I can no longer enjoy this beach. I will never be able to take my elderly parents for picnics. I will never be able to SUP again.

Currently, on busy summer days when The Esplanade car parking spaces are full and the sailing club car park is full, cars park on the surrounding streets including Laurence Street, Cross Street and Beach Road. They also park on the road within Manly Park.



Currently, on busy summer days when The Esplanade car parking spaces are full and the sailing club car park is full, cars park on the surrounding streets including Laurence Street, Cross Street and Beach Road. They also park on the road within Manly Park. Do you agree or disagree that these surrounding streets can accommodate the increased numbers of cars parking as a result of the installation of bollards on The Esplanade? (Other (please specify))

The surrounding roads become full during peak times as it currently stands. A lot of these roads/streets have limited parking at best due to being narrow or yellow lines. Restricting parking by the addition of bollards will put further pressure on these streets/roads and make difficult for families or anyone having to carry equipment or beach gear.

They are already busy and it will mean that Viator parking for residents become limited. Also lots of children are living on the surrounding streets so more prone to accidents

as mentioned before, roads too narrow, will cause strain for locals and be hazardous for drivers

These roads do not have the space to do this nor should they, would only become a problem for everyone living at the beach area

All those roads and carparks are full most of the time aswell as the dunes more roads would have to get used further away from the beach

"Currently, on busy summer days when The Esplanade car parking spaces are full and the sailing club car park is full, cars park on the surrounding streets including Laurence Street, Cross Street and Beach Road. They also park on the road within Manly Park" In your own words. Even less parking will not help. But since growing up as a kid and some 40 plus years on, this area has had little change to trees etc except for where there have been trees cut down with council approval. Just needs maintenance along the whole beach front and Manly Park reserve.

I agree but this isnt the key point as the surrounding areas are some distance and remove the experience of parking up beachside to enjoy a day or evening.

The roads near by will not be able to handle the cars being parked on them.

It is tricky to provide adequate car parking at our beautiful beaches where there has been so much growth and development in the local area in recent years. A dedicated carpark are would be handy. Especially if mobility impaired designated car parks are an issue.

Lawrence street and Manly Park Ave are on the bus routes - care needs to be taken to ensure buses can still pass. Perhaps parking on one side of the roads only?

There would be chaos on all the roads with parked cars.

Laurence street is busy as it is, if beach goers park there it's going to be chaos

Because as a resident it is often hard to get into your own property and you will push even more of them along the street. Laurence street is already not two way with cars parked on one side of the road let alone two.

As mentioned before having to transport everything to the beach can be really difficult for people. Also the streets are not designed to have traffic parked along them it will slow access both ways especially for buses and emergency vehicles, but I expect we will eventually only be allowed to park on one side of the street!! Also as mentioned before I don't believe it is for the sake of the trees and dunes it is for the local residents who don't want to look out on masses of cars parked in front of their properties. Why has it only become an issue now - cars have been parking there for years and years

As above: My parent are now in their late 70s would find parking "5 mins away" and walk too hard, and maybe not come and enjoy the beach that they have lived by all their lives next too. Also what "5 minute" walk are you talking about?? There is only a limited number of parks at the sailing club, and Larence St, Cross and Beach Street are all yellow lined / or no parking provided so where are you parking????? Are we all going to park up on these side roads all over peoples front verges?? I presume they will not like this and start putting rocks out to stop this.. The best bit about living on the coast is the beaches do not take away any parking, as we are only growing in our population.

Roads are not able to accommodate extra parking.

Parking in the park accross from the sailing club is not utalised and is never full over summer

Horrible for the locals to have all those cars parking in their streets

This will be a nightmare. This facility is one of the only places with grass and shade to park water front in Auckland.

I usually visit Big Manley beach during off-peak hours and parking is never crazy, so I can't comment. However, the visuals provided on the Bollards Proposal looks like plenty to parking space.

Too far if you have anything like paddle boards and kayaks

If you are not inb early by 8 -9am you have zero chance of getting a parking spot. If you do, the street is soo narrow it is turned into a singular lane.

Because somehow this street has had a ton of money already spent on judder bars (done twice), double yellow lines and plastic bollards. Whoever decides where the money gets spent should be questioned on the amount of money that has been spent on this one street.

There's not enough parking on. The adjacent streets

Because if they are already packed with the Esplanade being full, how will it accommodate for more?? Then more cars will come around the car park, and those wanting to go to the carpark will have to park further.

It will be harder for our senior citizens, disabled children and younger children to access the beach safely. These people deserve to enjoy the beach as much as a fit healthy person.

The Coast as a whole was never designed to have this many people in it, the infrastructure just isn't there and limiting parking spaces even more is not going to be a valid solution to the growing problem.

Every day of the week there barely enough space to park on the roads as it is. Doesn't help that's there speed bumps on the road now too so very little space for cars to park on roads. The sailing club Car park should be saved for bait trailers for the sailing club and fishermen launching their boats who can barely get parks as it is

If it is already filling up then imagine all those cars now on the streets that aren't made to hold all these cars.

There already packed on sunny day it's a joke. Just going cause more problems for residents in that area and accidents

This unneeded increase in street parking would increase the likely hood of car related accidents.

Local streets too restricted already by local parking, builders vehicles etc.
Need for further off road parking.

most of the surrounding streets, eg (beach rd, laurence st, cross st, etc) have no or limited footpaths. If you limit the parking on the esplanade you will increase foot traffic on these roads with increased danger to young kids

Yes they can but the streets are bad enough normally

On a busy day in summer when cars are parked on both sides of Laurence Street it effectively becomes one way

On a good day in summer there at least 100 vehicles jammed or parked on the esplanade Berm. Later in afternoons this becomes a watering hole for trades and 4 wheel drive brigade. Resulting in mayhem and anti social behaviour. We are esplanade residents since 1977.

That's not safe in my opinion. The amount of cars that will be forced to park on those busy roads will make driving though manly dangerous

I agree these streets will have the room for cars providing patrons can walk to the beach.

This is merely moving the situation and making access more restricted and less convenient for the ratepaying public at the benefit of the vocal few who bought on the landward side of the esplanade (not beach front) that now wish their property to be exclusive beachfront properties, access to the public land in front of their properties restricted and have time on their hands and political influence and connection to push such a proposal through the local board. This is not New Zealand.

It is already jamed with parked cars. Also the pedestrians access is poor to the beaches lacking footpaths and blind corners.

I live on a nearby street (The Circle - 5 min walk away), and I would be happy for people to park outside my house and walk to the beach if it meant that we could have a picnic under the trees. Also a few busy days with cars parked on the streets is worth it for people (not cars) to be able to enjoy the beachfront all year round.

Also manly park ave. it is difficult. But to save the dunes and trees we need to put this first otherwise we ruin the stability of the beach.

People can park around the Manly Park as well. There are plenty of space and it's short walk to the beach.

Visitors to the Beach should be encouraged to park around the road of the Manly Park not the streets there is plenty of parking there and its a short walk to the beach

No if these spaces are removed park I g will be even worse. Resulting in cross people at the beach and the roads being crowded with cars so bike riding is more dangerous for local kids

The existing residents will have visitors at the popular times. There is no need for bollards!

As mentioned in the previous answer this may have unintended benefits. There are also many other beaches in the area, many of the people coming to big Manly do so to park on the grass, this area should not be attracting people because of its natural carpark at the cost of this natural area to people actually wanting to enjoy the grassed areas and protect it for the enjoyment of future generations.

It is already very full on summer days

There is no way there is enough parking on back streets on a summers day it is total chaos at eastern end of esplanade and you want to block the grass area at the end of the road by 99 on a busy summers day the way cars park to get in and out of our drive

Roads such as Cross Street in particular will not accommodate the additional parking load. Berms will be damaged traffic will be congested and become dangerous for walkers and bike riders (Children) accessing the beach

There is a huge capacity at Manly Park and only a short walk to the beach

Population has increased dramatically on the coast in the last 10 years it is impossible to accommodate everyone that wants to park on the esplanade if bollards aren't installed there will be no berm to park any car. Cars will have to park in surrounding streets

Manly Park from Laurence Street side is bollarded off and chained for close parking to the beach entrance this area is occasionally used for sailing events only (not on)

They are not suitable for parking extra cars on. and often people visiting the beach need to carry umbrellas chairs windsurfers etc

Manly Park is already full during peak times, especially with boat trailers which usually fills at least one side of the park. Other times Manly park is already busy with group gatherings.

Manly Park will need to have proper parking put in on both sides as on a really busy day people try to park on both sides as it is and it becomes a very narrow lane which is dangerous to all the families who walk & ride through the park. Alternatively a footpath could be put in on one side in the park so that adults can walk and kids could ride safely away from the cars. A crossing for children would also be a huge improvement as cars still go too fast past the park even with the speed bumps in place. I believe when people become used to a crossing being there they will slow down.

The roads are too narrow and cannot accommodate additional cars

Is there anything else you would like us to consider regarding the installation of bollards along the Big Manly Beach reserve?

Convert the grassy area between the Esplanade and beach front house into angled car parks for summer peak time parking.

Just replenish the sand/earth around the trees and maybe fence off the tree root areas.

Make sure you do the surveys before commence work next time!!!!

If it was possible to block it off during certain times to ease the strain and give the environment time to repair, I think this would be a great compromise.

My suggesting would be to limit the times of the parking potentially making it a 9-5 parking area

Please fix the stormwater outlets as they are causing far more issues to the dunes than any car has. The surrounding area is not set up for cars parking on the roads.

With getting kids to take risks with crossing a busy street like Laurence Street. Our tamariki's lives are much more valuable than the water front home owners wanting their pretty sea views.

If the protection of tree roots is important you should first start with the parking area at Manly Sailing Club - this is far more of an issue than within The Esplanade.

There needs to be a car park, or extend the one that's there, so both the sailing club can use it and beachgoers

Create carparking in front of the beachfront residents houses to accommodate beachgoers parking

Be bold. Install the bollards. We all benefit in the long run.

Laurence Street is one of the feeder roads to the beach, and has bumper bars, yellow lines and limited access, during winter it can be hard to navigate this area, in high summer it would be dangerous. So many people access the beach with families and young children, having to walk for a distance isn't safe.

Not everybody lives close enough to walk to the beach. The elderly, pregnant women, those with children etc all need to park close to the beach. There is not enough parking surrounding the beach to accommodate everyone. Residents on surrounding streets will get upset at the increased numbers trying to squeeze in on street verges. Then more bollards will go up across the beach then another beach will have bollards. Soon all beaches will be off limits unless you live beach side. It's just too restrictive.

Just leave the beach as it is.

Refer mowing comment above => this should apply to the entire length of the Manly beachfront reserve.

I disagree with the bollards. If you decide to put the bollards, please put more parking for us to use. 4-5 parallel parks is just not enough.

If the road was widened and the berm used it would create parking

As a retiree I enjoy driving to my beach & just park on Esplanade & look at beach & chill out. I object to bollards making it impossible for me to enjoy my beach. Been a Rodney taxpayer for 40+ years

The grassed area that the bollards are to be placed in should be for people to picnic or enjoy the beachfront - the beachfront is NOT a carpark where cars damage the roots of the trees and is very close to where the dottrils nest. Please preserve the area. There is plenty of street parking including the car park at Edith Hopper Park - people are just lazy and don't want to walk. The case for cars NOT being able to park there totally outweighs any arguments for car parking to remain.

Protecting our coastal areas is more important than car parking.

Protecting the dunes and environment for future generations is a way more important task than allowing entitled people the ability to park super close. Given rising rates of obesity, I fully encourage able-bodied people to walk to the beach.

If the bollards are there it will jam up all surrounding streets.

I would suggest that more disabled parks be created close to the surf club so that those who are unable to easily get to the beach from further away might continue to do so. Safe Bike parking also needs to be installed to encourage more cycling.

I sympathise with the beach front residents about noise at night and would have no problems with some kind of chain to keep people out after a certain in the evening. But otherwise it just shouts of elitism that regular locals can't easily access the beach.

Yes - don't do it - the beach belongs to everyone in the area and access should be unrestricted.

People should be able to enjoy the reserve and swim without worrying about cars, particularly when small children are running about. Bollards are a much safer option. Parking in surrounding streets and walking or dropping off people and gear then parking further away is common across most north shore east coast bays beaches so why would Manley be any different

Visual pollution of the waterfront is massive with all the parked cars, and the detriment of the coastal environment and dunes is evident.

Bollards are a must from 28 year coastie.

I have visited the Esplanade for 60 plus years and have not seen beach damage from parking. The idea of placing billiards is ridiculous and will result in their unlawful removal.

Will limit access to a public area for no gain. Where is the case study to support this proposal?

Some more seating and picnic tables along the top grass area would make it an awesome place once cars stop taking up all the space for people to hang out

Little has changed along the waterfront in all my years around the coast. It is a lovely place to picnic and relax and at present is easily accessible. Leave it that way

We need to protect our beaches and trees. With the increase population there is a constant flow of cars over the grass.. Roots are constantly exposed and massive holes develop and cars getting stuck. Trees and grass should be there for people to sit under and enjoy not park their cars. Hopefully this will also put off thoses that speed across the grass and over the dunes ruining our beaches.

This is an absolutely stupid idea. Vehicles have been visiting and parking on berms in this area for many many years and the area hasn't changed except for extra planting to preserve the embankment. Prohibiting access is ridiculous 😞

The parking is already limited as it is with the beachfront parking, taking this away is going to make parking more difficult, and will lose the magical frontage that many is loved for - evening dinners on the beach, keeping it accessible for young family's and older generations to enjoy the beachfront access, view and Nz beauty of a true Nz beach

There needs to be parking for visitors, as well as residents. A parcel of land should be acquired so that a good-sized car park can be developed to take the large volume of vehicles. While public toilets at the northern end of the beach would be a benefit, it needs to be installed in time for the 2022/23 Summer (as there is not enough time this year).

Spend the money slowing boy racers on Ladies Mile before someone is killed. Install similar humps as on Laurence street.

I'm ok with having bollards as long as the roots of the pohutukawa trees are not damaged when they are installed.

The people in the area (95%) who live here do not want these bollards installed.... So how did this proposal get through?

Have provision be made for accessible parking i.e. wheelchair or old frail people getting priority that are not able to walk 5 minutes to the beach ? I further support the idea of reducing parking specifically to unruly visitors misbehaving at night. When parking is full a 5 minute walk with watersport gear eg paddleboard etc. might become a slog (note only). Although more expensive would a traffic impact study not be more appropriate than objective council observations especially if residents and other affected stakeholders will contest the proposal. Will reduced parking on the west not with no change on the east not force people to start parking on the southern berm of the eastern end ?

The trees don't have any damage after many years of people parking in these spots,

Do not install bollards

Consider if you wanted to use the beach, the facilities the council needs to provide to you.

Only what I've stated above re the berm parking option

Cars have been parking along this stretch for many years. The trees are not dying and the grass verge has not disappeared. So, why now?

My suspicion is of a disgruntled NIMBY living along the esplanade.

If bollards are to be installed on the beach side, then provide parking spaces on the ample verge in front of the properties opposite. If people are forced to park in the nearby streets, then before too long, complaints will lead to no parking being allowed in these streets and we'll be told to use public transport... Good luck with that!

This beach is part of the community and access should be kept for the community.

Preserving and looking after our coast is more important than being able to park.....

No thank you. Thank you for letting us have our say.

Cut every second tree down and create tarsealed spaces inbetween that could accommodate several cars. Also curb and channel the whole of the Esplanade to prevent cars parking on residents berms.

It's far more important to have tree shade for people not cars. There are still plenty of options on the Hibiscus Coast for people who wish to drive right to the beach. Please protect this precious area

I think this is a great idea. When I walk along the beach I do not want to see a row of cars. Also a lot of the people who park there tend to engage in un-social activities. I have personally seen the damage to the tree roots... this can only enhance the area!

We have been going to this spot for years, generations of our families and friends. This is a place where we can go and relax easily, take our older family members for dinner without any hassle of walking for to long. This will have a negative impact on society because it will raise the parked car traffic along all roads of big manly creating more chances of serious injuries, thefts, damaged cars and possibly death if a car hits a young child that runs from behind a car.

Quite frankly i find the idea of bollards being put in is a kick to the face.

Parking up on the esplanade for a quiet beer and fish and chips amongst friends is a tradition passed from generation to generation. Bollards are only helping the few residents that chose to live in this location, it's a disservice to the general population of the Whangaparaoa peninsula to deprive us of everyone's favourite place.

Don't do it

Maybe rope fence along edge of sand dunes to prevent cars driving on them but leave grass area open

Yes protect the trees, but don't prevent those with disabilities or limited mobility from being able to park on an elevated section of grass and enjoy an ocean view.

Also consider a seasonal approach. Perhaps restricting parking around the trees and dunes more heavily in summer for more picnicking space, but then opening up more space in the non summer months for people to be able to enjoy the outlook from the warmth and comfort of a vehicle on a cold winter day.

There needs to be a lot more parking available close by if this is going ahead. It's hoons driving there and ruining the grass at night, not "normal" visitors. Some other measures needs to be taken for that issue.

Additional parking in the area is needed for this proposal to work

Just leave it as it is

I fully endorse the proposal in every aspect and for the reasons given. Additionally to the anti social behaviours causing damage is large 4 wheel drive vehicles driving from the beach and up over the dunes. There is clear evidence of this at the date of this submission. I recommend large signs, big font and displaying No Parking on the Beach with reference Auckland Council or other Authority rules. One last piece of feedback is that bollards are oversized and deep enough to make them more difficult to remove or damage. Do the job once and do it well as opposed to the waste of time and money when Flexi Bollards were installed along Laurence Street Manly

Just don't do it. There's a couple rich people that live there that don't like all the cars and kids having fun, if ya don't like it then move out. Why take away what people have been doing for YEARS, just to accomodate some stuck up oldies.

A barrier to stop cars getting too close to the edge of the sandhills would be handy, also something to encourage all cars to park 'nose in' to the beach to maximize the parking. Cover up the exposed roots and make it easier for people to park accurately. More policing to stop people driving/parking on the beach would be welcome

Yes I have been going to Manly Beach since I was a child , as a teen-ager we went in our cars and as an adult I go in my car I can not see what all the fuss in about . The esplanade looks like it did 45 years ago

Elderly/handicapped people can enjoy the beach view from there car, tradesmen on there lunch breaks. Just leave it alone. The trees are fine pohutukawas live on the sides of cliff faces with half there roots exposed so the trees aren't a problem. If you have to protect the dunes do it from the seaward side but the cars aren't affecting the dunes they don't drive off the edges onto the sand. Well maybe the odd idiot does, but I've never seen it happen and I'm there every second day. In my opinion this is how id like to see all beaches, open with easy access, carparks destroy beaches. When the cars aren't there its beautiful green grass not ugly tarseal. **JUST LEAVE IT ALONE PLEASE.**

You must provide convenient parking for older people who love to swim for exercise and not expect them to street park and walk. The yacht reserve is overflowing in summer.

This on going problems with manly beach Berm date right back to 15th December 2010. Location Manly sailing club,Chris Burgess. Auckland council proposed, parking bays, restrictions on vehicle access To Berm because of anti social behaviour and vehicle and dangerous driving on the esplanade and over The Berm.fast forward nearly 12 years council still procrastinating how to solve this on going problem ! We residents have had enough of this vehicle caused Vandalismof the Berm. Answer(Bollards)

Just too many rules and regulations .Please can we not just have a normal life as we used to.Being able to drive down and park overlooking the beach is heaven,especially for older people and families.Just ban alcohol and the idiots that spoil it for others.

With the cars parking along the beach front there is increased rubbish left behind from people drinking alcohol and leaving their take way rubbish. It is very common to go for a walk on a Saturday or Sunday morning and find broken bottles, food scraps, empty beer bottles and cans strewn all over the sand dunes in the Summer months.

We definitely need this to happen. There is also the issue with 4 wheel drive vehicles being driven up and down the dunes and speeding along the esplanade and surrounding streets. Antisocial behaviour is also happening. Also the driving and parking on Manly Beach needs to stopped. More signage that is clear that this is illegal.

If this doesn't happen the damage that has occurred already will only get worse and won't be able to be fixed. During the week there is only a hand full of cars that park there so I disagree with people saying that they can't park anywhere else.

Do the bollards right so people can't remove them or damage them. Do the job once and do it properly

Don't do it!!!

For Gods sake leave the beach frontage as it is. There is nothing wrong with the current situation. More pressure will be put on the surrounding streets where there is limited parking for residents as it is. Sick of all the woke carry on at present in general which I guarantee has come about by a couple of precious beach front residents. How on earth was this ridiculous idea put forward! LEAVE OUR BEACH FRONTAGE ALONE!!!!!!!!!!

I would also point out that a Private driveway sign has been installed at the beach end of Cross Street at the entrance to the dedicated road which runs across the eastern end of the beach front which needs to be removed.

Installing bollards on the road / reserve end WILL result in more cars being parked on the beach which will be an increased safety risk. This already happens now and will only increase if you take parking away. I also have witnessed 4WD vehicles driving their vehicles onto the beach, up the dunes to park underneath those trees on the Esplanade. So putting bollards on the road side only will not prevent certain "locals" as I will guarantee they will drive over the dunes to park their cars there. I completely agree, the area underneath the trees should not be for parking, it should be for people to sit. Provide more parking in areas around it, such as around Manly Park.

Cars are damaging the tree roots, and therefore these trees have not grown as much as they should - they have been there a long time, but are not very big

I suggest perhaps look at slightly cutting into the manly park across the road (that is large and not being used for anything in particular) and creating additional car parks there for beach goers. It will free up street space and is a safer parking situation for parents with kids (which is the majority of beach attendees). Rather than have the streets blocked up with cars. Parking in a car park is safer than getting kids out on the street.

We all love our beach n these changes will take away our beautiful areas of being able to gather, enjoy swims, use our JETSKI, kite surf n set up boards not have to park miles away etc..use our vehicles to change..esp my grandchildren..n park in the shade too at times..as I said the trees have doubled in size n need trimming if anything..Dont wreck our beach for a few rich peoples needs please. !! This is a traditional gathering place for Coasties n if the people living there dont like it..maybe they shouldn't be on The Beach Front!!..my family live on Tindalls Bay Rd n have done for 33yrs.

The trees are fine, they been there over thirty years.

Instead of bollards could there be additional rubbish bins installed as there is one bin at Cross Street and nothing else until the Yacht Club car park. Bollards will not fix the youth enjoying themselves at Big Manly, the local community Police should monitor the frontage with their drive by's .

The case for requiring bollards is slim as there is no ongoing deterioration or erosion of the foreshore or sand dunes being caused by the vehicles (there are local areas of wear that can be managed in other ways).

Bollards will restrict access for those that have a need to park close to the beach (infirm or less able citizens) and for those that wish to access the beach with their watersports equipment for which Manly is well known.

If the concern is loud and drunken youths enjoying themselves on the foreshore and disturbing the locals who have bought property on the esplanade across from the grassy areas and foreshore where young people have been coming for years to hang out with their friends then the liquor ban will deal with drunkenness and those that move to an area where people gather and have fun should have considered that in their due diligence and not expect the rest of the ratepayers to step aside and allow them private use of this public treasure. Public money should not be used to install bollard or gates or barriers to restrict public access to public spaces for the benefit of the privileged few.

While we are at it can we revisit the layout and construction of the ridiculous speed bumps that no doubt these same people have influenced council to install along Laurence street - I am all for traffic calming measures by there are better ways and better speed bump designs than what we have after the first 3 attempts. Who is it that lives here that is pushing this stuff through council??

The trees have been there for 60 plus years their roots reach to the dunes. ALSO cars don't park on the dunes. People will park on the berm and annoy the residents living beach front.

Protect Trees, and screw non essential cars

I walk on this beach daily, there is not much shade on the beach and the shade that is there is currently taken up by cars. It would be a great improvement to be able to use the space under the trees for picnics.

I'm afraid there is reckless disregard for the dunes. Heavy trucks roar over these and dig tracks and ruts into the dunes destabilising them. Also why oh why do cars drive off the esplanade and along the dunes, using the dunes as a road. Sickening.

Installing bollards is clearly not the right option, fitting an individual protection perimeter around each tree would effectively protect them without too much restricting access to users.

As a local, I fully support the installation of the bollards to protect the reserve, sand dunes and trees caused by vehicles parking. There is a huge increase of the people coming to Big Manly to wind surf and do other recreational water activities over the past three years. I understand it will be a bit of inconvenient for them to park a little bit further away from the beach and need to carry their gears down to the beach. However, if we want to protect this beautiful beach for everyone and for the future generations, we need to stop the damaging now! It's such a shame that the bollards were not able to be installed in October !!! I think the condition of the dunes and the trees will worsen over this busy summer. Hope it's not too late for council to take action!!!! Also if possible, I think more rubbish bins are needed along the beach as more and more people come to the beach for picnic.

I have lived on the flat at Manly for over forty years and in that time the only improvements the Council have made is to upgrade the flat ground. Council needs to take action immediately regarding the installation of the Bollards.

In the Forty years of living at this beautiful beach I have never seen so many boats, trailers, jets skis, windsurfer's and I believe it is time the Council took responsibility before this Beach is destroyed. The Esplanade Rd is not designed for the traffic it is getting you cant even walk along the road safely any more, cars come along the Esplanade thinking it leads some where, there are no signs telling people that it is a dead end and there is No turning bay at the end, The Bollard should have been installed in October, shame on YOU the Council for listen to people who don't live within the immediate area.

Please reconsider this proposal there are soo many more worthwhile projects for the council to be addressing.

Can more parking be added at the manly park to manage the overflow

Young families, elderly and disabled are able to park by the sea and enjoy the beach here. It has a wonderful, beautiful outlook that should be available to all.

The installation of bollards is a good idea to protect the foreshore and roots of trees between Cross Street and the Manly Sailing Club. This area is clearly suffering damage to the ground and the tree roots while vehicles are driven in this location. Where possible however it is important to provide some parking rather than delete vehicle parking altogether.

I understand that the bollards are not going to be set in concrete to reduce the interference with tree roots. This would be a big mistake. If bollards are not made of a robust material and installed with a substantial concrete foundation they will be almost certainly destroyed or ripped out of the ground in no time at all. The soil is sandy and the four wheel drive vehicles which frequent the area can easily push them over without suffering damage to the vehicle.

Perhaps boating club could take less space. Driving to beach could be discouraged

Install them along more of the beachfront to keep more of our precious and fragile nature safe.

The arguments to destroy nature so you can park close to the beach is actually destroying the thing you are going there to see. It won't be long before the verdant grass verges where home to grass, flowers and wildlife is turned to dust. Then guess what, people won't want to park there anymore! Tree roots and grass help slow erosion too, I really feel even if there is an overwhelming majority to not install the bollards we need strong leadership to do the right thing and preserve our heritage for those not old enough to have a say. Many thanks and blessings to you :)

I fully support the protection of the dune and the Pohutukawa, and fully support wide public access to Manly beach, but for the reasons described below, I do not support the current proposal.

Insufficient information has been obtained and provided by Council for an informed evaluation of its proposal to install bollards on Manly beach. The community has not been given any information about alternatives to bollards ie. other ways of achieving dune protection, and other ways to do so and enhance public access, and not create adverse impacts elsewhere. The Council is proceeding in this consultation on the basis that bollards are the only way to protect the dunes at Manly beach and traffic impacts will be monitored to see if it works; and if not changes can be made. This appears to be a narrow and cost-cutting approach which in the long-run could prove to be wasteful of Council and community time and resources. Council is effectively imposing on the public and the local community an experiment that can be avoided. Council's approach to date is inappropriate at this time when restrictions have impacted many, and there is a greater need to build communities, not divide them - which is what the Council's actions have done. A reset is needed.

The plan inexplicably has no information on the needs of disabled, elderly, and young families who are dependent on vehicle access for easy and safe access and use of the reserve and beach. What analysis has the Council done relating to the needs of those members of the community and wider public?

As it stands, the bollard 'solution' to vehicle erosion of the dune, appears to simply push the erosion problem on to the other side of The Esplanade. So this proposal is not a solution, it is just moving the problem elsewhere. The inland side of The Esplanade is still part of the coastal dune system, and has the same grass cover as the sea-side dune. Increased vehicle erosion from parking here will turn this zone also to dust and create a wind-borne nuisance for the public using the beach, the residents in the area, and for cyclists, walkers, and runners who use The Esplanade. How will Council protect the grass cover and the tree roots on the inland side of The Esplanade, including the large Pohutukawa roots on the inland dune? With or without bollards, how will the Council prevent current and further erosion on the inland side of The Esplanade? These aspects need to be considered as part of the plan.

What thought has been given to the aesthetic impact on the dune from a long row of bollards 600mmH? When there are few cars, this area is currently still more natural than most beach fronts in built up areas. The row of bollards will totally change that - it will section off the dune and narrow the dune depth. The estimated 1mD strip outside the bollards, beside the road, will also turn to dust, which will again make the dune recreation area smaller. The Pohutukawa roots in this zone will be fully exposed and no doubt damaged. Has the Council evaluated the environmental impact of the bollards on the dune and trees? Has it looked at other design solutions? Have coastal landscape architects had input into the proposal? Have other more natural barriers eg. a coastal planting solution in areas needing protection, been considered?

Problems with traffic management and safety also arise from the proposed plan. For example, pushing more parking into surrounding beach-side streets where people also walk/cycle etc. creates new safety hazards. Cross Street has no footpaths, and people currently walk on the road or grass verge to the beach. Where will they walk when cars are reversing in and out, and parking on the grass berm there? On Laurence Street where on one side there is no grass berm between pedestrians and the road, the proposal's increased car-

parking will reduce the already limited protection for pedestrians on this busy road, and even more-so in summer time. Another example - there is no turning bay at the end of The Esplanade by the Sailing Club. What will happen when drivers looking for parks on busy days, find none, and need to turn around at the end? At that end, there is very limited space for turning. There will also be increased use of residents driveways to reverse and and out of, creating safety hazards especially for young children, and for kids on bikes. Without a turning circle, and restricted space due to the proposed bollards narrowing of the overall space for turning, it's likely this will cause traffic blocks on busy days, again impacting on safety of pedestrians, cyclists and runners using the The Esplanade. Already on busy days - with parking currently on both sides of The Esplanade - vehicles need to back down the road from the Sailing Club. Other turning issues are also likely to arise if cars are parked in the narrow parallel parks allocated between the bollards, when there are cars parked opposite on the inland side.

Add boats, tractors and trailers, kite-surfers, kayakers etc to this scenario, and the implications for safety and traffic hazards multiplies exponentially.

I urge Council to undertake a full evaluation of the environmental impacts of its proposal on the whole area impacted, undertake a proper coastal landscape protection and design plan, and a traffic and safety management evaluation, and then develop the solutions needed for community consultation. If this is not possible due to immediate risk of another summer of erosion of the sand-dune and damage to tree roots, then bollards or similar should be proposed to the community as a temporary one-summer solution - but with more parking spaces, and specific consideration provided for parking for disabled, elderly, and young families.

More comprehensive and creative solutions need to be generated by Council that meet the needs of protecting the whole dune environment and the needs of the public and the local community, and especially for those who are reliant on vehicle access to the beach due to disability, mobility or age, including young families.

The fundamental problem causing any erosion (if there is any) is the Council lawn mowing contractors mowing the grass too short. This is most prominent on the humps where the mowers cut the grass thatch down to sand. It is very embarrassing that Council Officers would get this far down the process without understanding the impact of their own maintenance regime.

Bollards or other obstructions are the wrong solution to a perceived problem that is really only minor. Other solutions would be more affective at achieving the stated goals.

I have been going to manly for 50 years and I have not witnessed any detectable deterioration of the foreshore that can be attributed to cars parking adjacent to the beach. It is frequented by water sports enthusiasts who bring windsurfers, kites etc and like to be able to park on the foreshore and use their equipment easily. I see no reason this has to change. To suggest there is damage is unscientific nonsense . Just look at some old photos and you will see nothing has changed in a long time

I would be interested as to how much sway people visiting from outside the area compared to people living in the vicinity of the beach will have in this process. Many of the people I know who are strongly against the bollards drive from other areas and have other beaches they live closer to that they could choose to visit. Big Manly attracts people because they want to be able to park their cars by the beach, this is at the cost of erosion and the ability of others to use this grassed area for recreation. Residents that I have spoken with are in favour of the bollards for the benefits it will bring to the area. As this is their closest beach it would be great if their opinions were taken into account as opposed to people choosing to visit from outside the area. Hopefully the consultation isn't simply a numbers game as I fear out of area visitors may outnumber and out shout the community voice. Thanks for the opportunity to voice these concerns. Hopefully the process results in a positive outcome for the community.

The trees seem absolutely fine and the people who use this stretch are mostly windsurfers ,sailers and kites who have become a community. Not being able to park would be a barrier to social interactions

Manly is a one of a kind special beach to me, mostly due to the wide variety of people who participate in wind sports there. This takes place for many factors however one of the more significant factors is the excellent parking options and rigging areas along the Beach frontage. If these areas are removed by the installation of bollards, I believe the usability of the beach will be significantly hindered. I just can't understand the purpose of spending rate payer money on something that reduces the functionality and usability of our big manly beach.

ka kite

To whom it may concern

We object to the installation of bollards along the Esplanade on Big Manly beach for the following reasons:

1. Families with children and beach paraphernalia will find it difficult to park elsewhere and transport their belongings to and from their car
2. The elderly who park along the beach will no longer be able to enjoy the view from their cars.
3. Windsurfers, kite surfers and kayakers will find it difficult to transport their equipment to the beach if they can't park near the beach

4. Alternative parking will need to be found. If you were to monitor the present parking situation at the weekends you will find that the parking near

Manly Sailing Club is always full as are the verges around Manly Park. It would be a retrograde step to take any of Manly Park for this purpose if

The Esplanade parking was unavailable.

The park is in high use in diverse ways; from picnickers, kite flyers, sports groups practising, dog walkers, school groups, families on bikes on

the relatively quiet road or playing on the grass areas.

We ask who instigated this proposal. Is it actually ecologically driven or at the request of a few residents who live in houses along the Esplanade?

If the latter is the case, then a small minority is driving something not wanted by the majority.

We have lived here for thirty-three years. Dangerous and ugly pines were cut down and over the years the pohutukawa trees have flourished providing welcome shade and beauty. They do not appear to be suffering from the summer parking. Pohutukawa manage to survive clinging to cliff faces, sending out roots from their trunks and branches. In fact, in some countries, such as South Africa, this tree is classed as an invasive species with its ability to survive and thrive.

If the Esplanade residents and ecologists are really concerned about root damage, then the council could repurpose the council owned berms outside the residents properties for diagonal parking. This would still allow parking on the Esplanade for all our reasons stated above and solve any perceived root damage problem. Our assumption is, that if the bollards are installed, then the public will start to use these berms for parking anyway.

Yours sincerely

Janet and Ivan Ramsey

This seems less of an environmental push but more of residents of The Esplanade not wanting cars parked outside their houses.

I see no issues in the way it already is on the beach. Leaving beach how it is gives people who are unable to walk to beach a chance enjoy the beach.

The trees are not been damaged they have been there for years are now at a great hight that you can enjoy the shade. The beach front should be for everyone to enjoy not just people that can afford the house's. If they don't like it then leave the area.

The damage that is occurring is natural decay(when a storm hits). I have lived in manly for over 50years and want to carry on going for picnics at beach with my family. I have elderly people and ones with babies don't take this away from us.

It is paramount to protect the current dunes and beachfront for peors pleasure and safety, and for the wildlife. I often visit Manly beach and have been doing so for 40 years. From time to time I visit until late in the evening. I have noticed week days the beach is visited and respected by school groups, family groups and older people who care for the area. It is often on Thurs + Fri after work and on weekends that groups in big cars, 4 WD vehicles, vans and Utes turn up + drive up on the grassed area, wrecking the grass and driving over the bumps + hillocks to try and get up higher. The turning of these tyres undermine the grass + sand. Likewise big family groups from all over Auckland region come to this beach to picnic and to cook, expecting this beach to have facilities like a regional park, which it doesn't. I think the bollards are a good idea and will provide a decent demarcation line to keep this beach unspoiled fir future generations. Kia kaha and thanks for seeking consultationfrom locals.

This is a terrible idea, at odds with NZ values. We should all have equal access to the beach.

Manly is a major destination for watersport activities, this plan aims to eliminate that.

There has to be a better alternative if you put bollards on the grass area we have trouble getting our boat in and out of our driveway now! If you block grassed area at the end of the road we will put a gate on our driveway and it will be a shambles people will not be able to turn around, we will not be able to take our boat in or out of our property which we assume we are entitled to onto a public road any time day or night. we would be happy to meet (saved as Manly one)

I genuinely believe that opposition will remove the bollards (some) in protest. It will become a mess with broken or damaged bollards along the beach. many of the young people who currently use the area peacefully have 4 wheel drives and nocturnal habits (saved as Manly two)

I recently wrote to the Council worrying about a public safety matter on Council land outside my property at The Esplanade and was asked by Council officers to express my concern as part of this process – please see point 4 below.

Submission

1) Strategic Thinking: Manly Beach is an outstanding Hibiscus Coast asset and I would encourage the Council to address the whole beach and the total beach environment¹ in a strategic way, rather than in a piecemeal way.

2) Dune Protection: Dune protection is critical and I support the Council's bollard proposals - it would be negligent to ignore the current damage and progressive decline.

3) Large Trees: Macrocarpa's and more recently Pohutakawa's have been a feature of Manly Beach for the past 100 years and should be carefully maintained and protected. They are integral to the character of the beachfront.

4) Public Safety: The safety concern I raised with the Council relates to the small grassed area in front of 95 and 97 The Esplanade (see pix).

a. I understand this land is unformed legal road, but it looks like a park and is extensively used by walkers, cyclists, families and picnickers. Small children have a lot of fun riding their bikes up and down the grassed dunes.

b. In mid-November I watched a little girl on a bike (maybe 4 years old?) nearly get run over by a car reversing on the grassed area. The driver finally braked, the little girl swerved in the nick of time and thankfully she wasn't hurt. But it was a close call.

1 Dune management, trees, parking, landscaping, amenities etc.

2

c. Because of the rolling dune formation it is difficult for cars to manoeuvre safely – one minute the driver is looking at the sky and next they are looking into a ravine. It is not a flat land with good visibility.

d. The combination of cars and people on this section of The Esplanade is incompatible and I think there is a good case for excluding cars. A child hurt or killed here would be a tragedy.

e. 95% of the time there is plenty of car parking on the formed road east of the grassed area and people know they shouldn't drive on the grassed dunes - but they do anyway, because they can.

f. My suggestion is that the Council considers:

- Installing bollards at the end of the parking area outside #97 to restrict cars and make it a safe place for walkers, cyclists, families and picnickers.

- Replacing the existing low railing fence in front

Unfortunately in the last few years we have an element of young hoons parking on the berm from late afternoon to late at night. They delight in spinning their wheels and causing willful damage to the Pohutukawa roots and churning up the grass and sand. They even drive their utes over the berm and onto the beach. If council do not come up with a constructive plan to remedy this problem we will not have a berm at all. I have been a resident of Manly Beach since 1977 and have witnessed the decimation of the Manly berm

Remove bollards from Manly Park. Definition of a park is a place to park vehicles. There is your answer. Being long time residents of the esplanade, Manly Beach we have witnessed the destruction of the berm first hand. Vehicle vandalism is destroying the berm, our property has a 18 metre frontage. we have up to 10 vehicles some 3 deep parked outside our property the damage caused there by vehicles is unsustainable for the grass berm it will not exist in a few years time

At peak times cars with boat trailers park in Laurence St, Cross St, and Beach Road making it extremely dangerous for pedestrians and children.

I believe if installed the bollards would be removed by concerned locals. This happened to the yellow plastic bollards installed in the centre of Laurence Street

No parking or driving on the beach signs should be placed at all access entry points along the beach. Once the Council has made its decision and begun work then members of the public should not be able to stop that work

We want parking access to the beach.
What's the point in our lovely Hibiscus Beaches if you can't get to them.
The same for Orewa Beach.
With the increased development parking is getting more difficult.

We live in Laurence Street and have been aware of the degradation of the dunes on the Esplanade for about the last two years or more.
This is largely due to the additional volume of cars but also the type of vehicles...now mainly 4 wheel drives that mount the dunes taking off grass.
The Council proposal was a crude way of fixing this problem. There was no thought or finesse in the design. There needs to be consideration given to each tree and its surrounds. Some need protection and others don't. The same applies to other areas. Don't just put bollards in everywhere.
There was no feed back about where the cars would park with reduced space. Many vehicles will then park in Laurence street and as there are few yellow lines the street will become quite congested.
Thanks

Redesign the Proposed parking bays to allow more Perpendicular parking. There is plenty of space for this while allowing the shaded areas under the trees to be used for picnics . There is also plenty of space Opposite 41,43,45 The Esplanade for at least another 10 cars to be parked Perpendicular without affecting trees, dunes or the reserve. Bollards have recently been installed (last 6 months) to protect the dunes and reserve in this area and trees are nearer to the beach.

Access for families and elderly in community should be given priority over landowners with houses onto reserve. Suggest low fences could act as seating around pohutukawa to protect roots if it is an issue.

Do not install them!!! Please leave this beach alone. It's so special.

The bollard installation is an aggressive move made by the council. There are countless other beaches along hibiscus coast where it's always been deemed ok to park on the grass verge; Eg Arkles Bay and Matakatia.
The introduction of billiards here in this one specific location feels more like the demands of someone "important" who lives at the location.
Given the budget already spent at Big Manly, on the small humps, poles and then big humps, I'm surprised there is any budget left to do this project. If there is money left for Bug Manly, it would be wiser to spend the money extending the current car park at the Sailing Club, rather than improve the extensive sea views of a small privileged minority.

We think it's a great idea to protect the dunes and trees and will be safer for children and nicer to picnic along there.

You need to consider protecting the berms immediately at the front of the properties there

This is a great initiative, the cars parked on the grass dunes are dangerous to beach users and erode the coast line

How can we improve the process of submitting feedback to Auckland Council?

Ask for feedback before making these kind of decisions

Make sure you do it before installing bollards .

Asking questions about travel distance is a bit strange. People all over the coast enjoy all our beaches and so they should. Along with a significant number from West, South Auck etc.

Open up feedback before works like this commenece next time - sad that it had to come to this via public outcry.

No advice from me, easy to access and use. Thanks for letting me have my say.

Not having to create a login would be great.

Just listen to residents concerns

In addition to the normal notifications, regularly place notices on the Hibiscus Coast facebook page for any meetings with the agenda - that way people can't say "they didn't now".

Listen and hear what people are saying - we give feedback but we have no idea whether it is taken into account

Stop asking for it...

Make easier to use and have more relevant questions

Don't ask irrelevant race based questions. How is my race relevant to my views on this or anything else?

Pretty quick and easy already

While filling out, at each question, the screen scrolls to the bottom of the page. On an android

No it's good

Na

By showing the results and the action taken - Auckland council is renowned for asking for feedback and then ignoring those who pay the bills.

This should be made more public to allow for representational feedback

if new proposals are put forth in certain areas - POST a sign where people can text their opinion in. You'll find texting is the quickest way to get a response. Long-winded applications that ask for Gender/nationality/birthdate etc.... shouldn't be included in it. It makes no difference

Don't really think my sexual identification is a critical requirement. The whole process would put off someone not digital-savvy.

- Morally persuading those taking the survey to answer a particular way
- Easier to understand statements

It's all good, thank you!

Ask less biased questions

Make it more known that we can have our say

Encourage more free discussion of ideas. I appreciate this makes it harder to categorize submissions but it draws out more information than 'ticking boxes'.

Do what you are doing

I think it's fine

Perhaps consider the needs of certain groups in a situation like this, i.e. elderly

Get the councillors to come down to The Esplanade Manly on say a Thursday late afternoon 5.30 to 6.00 pm and view the going's on, vehicles hooning along the berms and the esplanade 4 wheel drives parked 3 deep, every man plus his dog wants to park on Berm. The definition of a manly park is too provide Parking for vehicles in a park! We have no parking on beach side of Laurence street at sailing club entrance to manly beach. This area is completely bollarded off for the occasional use by sailing club. This is the best access for all those people who cannot or will not walk to Manly Beach.

Pp

ldkkk

The page keeps scrolling backwards when entering details.7

A survey with better worded non-loaded questions that will enable people to answer correctly and allow for a fair impartial non-biased response for questions that are not a yes/no answer. You appear to be trying to have people give a response so you get the result you are seeking to support your proposal.

By making the website more intuitive and user friendly

Listen to the people who live here..we have many many more people in the weekends so if we can still enjoy in the week ourselves please don't change it.

The question is will the council listen to the people ? Or will they carry on with their own agenda's , regardless. We Do Not Consent !

No Comment

I have photos of treads digging into dunes. I would like to upload photos.

Your questions are very limited.

The majority is the questions are written with an inherent bias toward installation of bollards. This does not appear to be constructed as a genuine consultation.

It is important that a consultation process is used. This needs to include asking questions from those people familiar with the area before finalising the installation.

Took a while to register

Questions were unnecessarily narrowed from the outset. Council needed to first invite people to answer what they support in terms of the desired outcomes, without assuming those outcomes are tied to the Councils' proposed solution.

The questions are biased toward the council plan. A more open and neutral approach would be expected next time. The un-notified approach taken originally was disgraceful. Jobs for the mates??

Registration is needlessly complex

The wording of the questions have a high level of Response Bias towards the submissions desired outcome.

Works have already been stopped once before the submission was created. Disgusting how this has happened. Get your shit together Auckland council heads should roll on this one.

Allow for pictures to be added as part of the feedback.

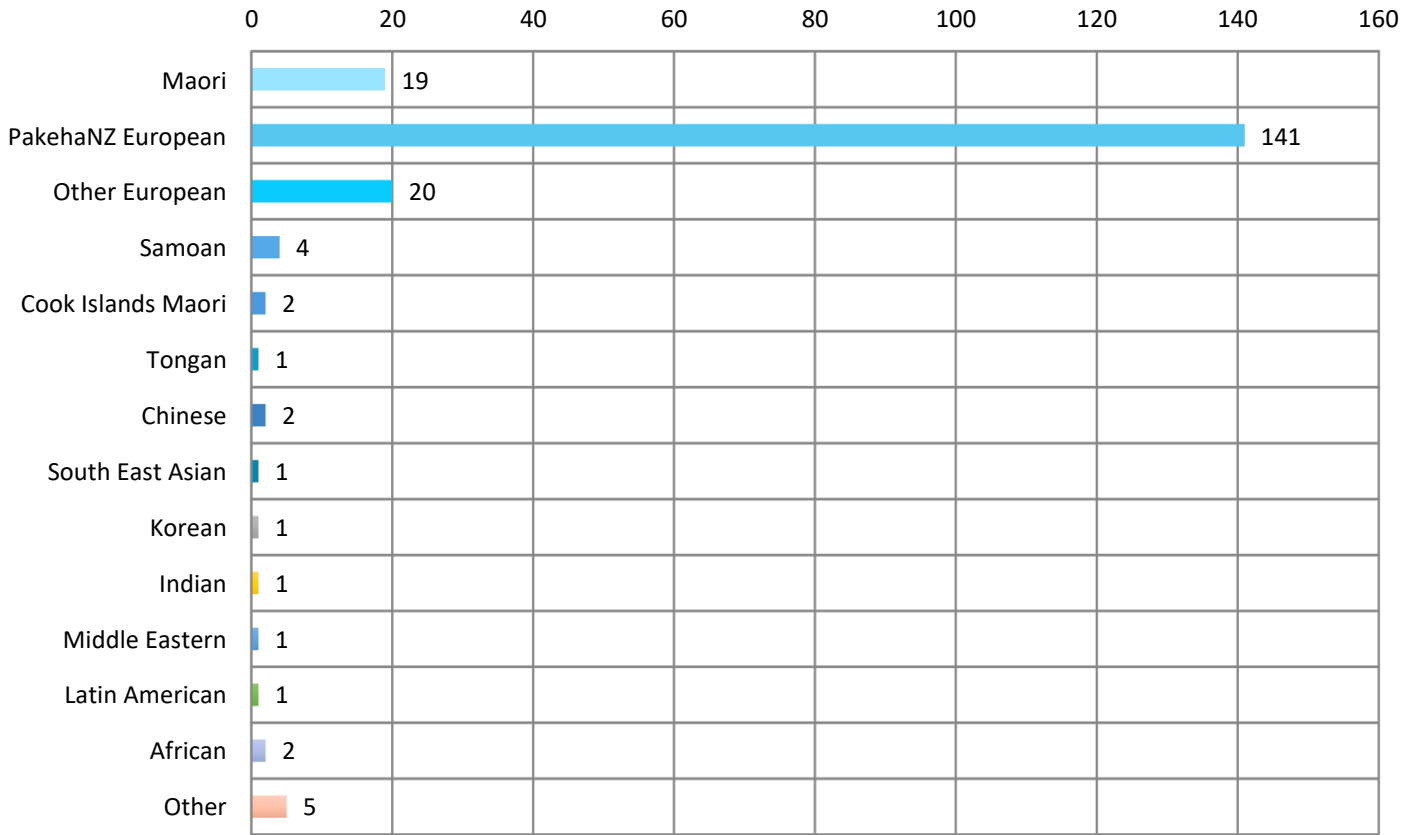
This survey was not widely promoted. I happened to see a sign that had been pulled down at Big Manly Beach. There was very little promotion locally. Surely it would have been useful to garner feedback by promoting this survey as much as possible?

Only saw this survey because another person reposted on Facebook, otherwise wouldn't have know any tbh t about it.

ask better questions

DEMOGRAPHIC ANALYSIS of Contributors - Based on Sign-up form responses

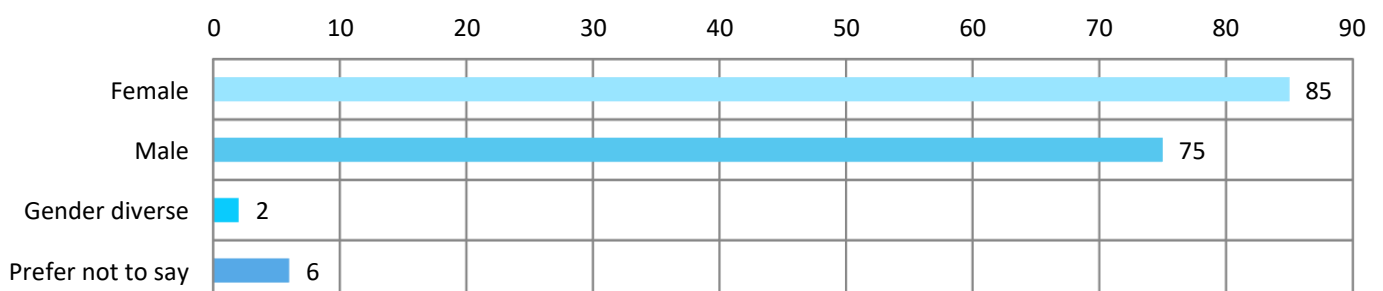
What ethnicities do you identify with



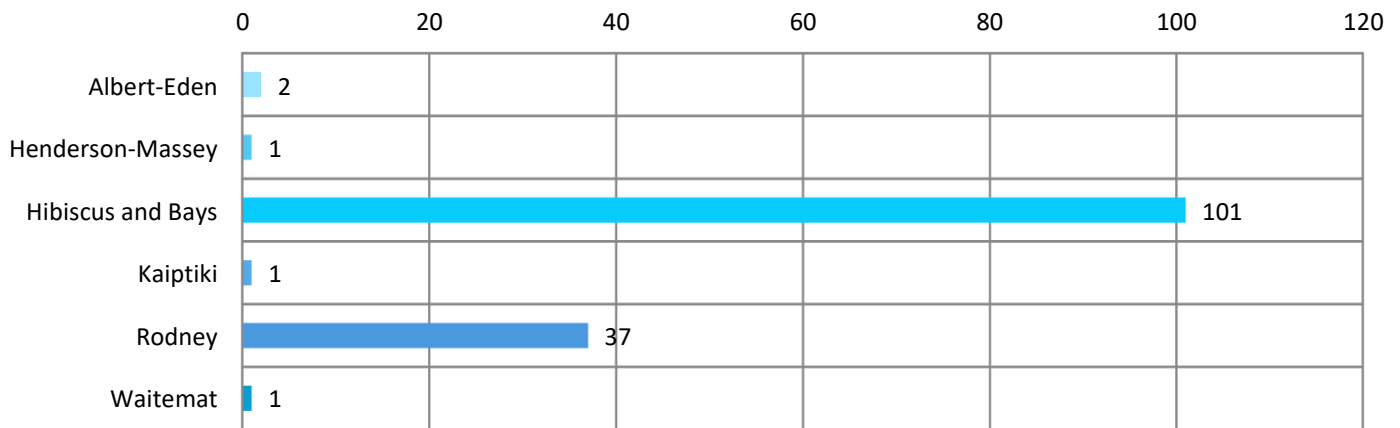
What age group do you belong to?

Under 15		35-44	29	65-74	19
15-24	15	45-54	9	75+	8
25-34	15	55-64	18		

What gender do you identify as



What local board area do you live in If you dont know your local b...



Email Submissions

SUBMISSION TO: AUCKLAND COUNCIL

FROM: BRIAN SHARPLIN

REGARDING: THE COUNCIL'S PROPOSAL TO INSTALL 300 BOLLARDS AT MANLY BEACH

DATE: 24 NOVEMBER 2021

INTRODUCTION

Manly Beach is one of the most important recreational areas in the Hibiscus Coast. It is one of the original foundations from which the district has grown. Hundreds (sometimes thousands) visit Manly Beach every day of the year.

But the Manly foreshore (and the carriageway and the grass between it and the houses) has not been maintained to anywhere near the standard it should have been in recent years.

The principal matters that require urgent attention are:

- The 'entry' roads from Cross Street and from Beach Road, to both the beach and some residents' houses, are a two metre strip of aged seal. Beach visitors' cars enter on them and then park on the grass. The extent to which the grass, what is left of the dune, (and potentially the pohutukawas) is being damaged by this practice is of concern. The situation has deteriorated in recent years – especially at the entry from Beach Road where there is now just a 105 metre by 5 metre strip of sand – below the level of the seal. We have watched it get progressively worse and fear the same thing is now starting to happen further along as well. We are not saying the parking area should be removed, but it needs to be properly formed and improved somehow and better maintained.
- The area around the end of Cross Street (that also has no kerbing and channel) is very untidy and on the eastern side at the entry to the grass is another place that is continuing to deteriorate.

Similarly the untidy state at the end of Ladies Mile.

- The area where cars park under the trees near the Yacht Club is deteriorating and becoming increasingly untidy – with some large muddy patches and water pooling after rain.
- 90% of the visitors to Manly don't walk on the grass. They walk on the beach. However there are no footpaths on the grass for them to walk on. In the area east of the Yacht Club they walk along the road seal. In the gap between, a dirt track has formed immediately adjacent to the front boundaries of Nos 93 – 97.

- The width of the grass from Beach Road to the Yacht Club varies quite a lot – with sand dunes of varying width and quality in front of it. From the Yacht Club to Moreton Drive there is virtually no grass – just sand dunes (again of varying width and quality). It seems these dunes aren't being maintained at all. They are (were) defined by a rope barrier. In some places the ropes are broken (or are not there at all – just the posts – see for instance at the end of Ladies Mile) and the sand has eroded so far behind them that the barrier posts now 'just stick out in the sand way out on the beach'. In some places (for example for 80 metres between the Ski Access Lanes) the dunes have completely gone. (Within the last few months, on the eastern side of the Yacht Club, some 'roping off' and planting has been done).
- There are no constructed steps from the grass down to the sand. In places (like outside No 41 where people have had to traditionally exit because of a stormwater drain) they have had difficulty struggling up (and in so doing further damaged the grass). Now, because of the recent roping, they can't get up at all and after heavy rain have to walk through the drain.
- Four stormwater drains (three very large ones – at the end of Beach Road, in front of the Yacht Club, and at the end of Ladies Mile) discharge onto the beach and when they are not discharging and damaging the beach are full of stagnant water for most of the year. The scouring that has occurred in the last few days at the Beach Road outlet is a good example of how serious this is.

THE LEGAL REQUIREMENTS

The Council is legally obliged to manage all of its reserves in a certain way.

Section 16 of the Reserves Act 1977 requires it to classify every reserve according to its principal or primary purpose.

Section 41 requires that a management plan be prepared for every reserve (or reserves) - other than for a local purpose reserve - and that **every management plan:**

'shall provide for and ensure the use, enjoyment, maintenance, protection, and preservation, as the case may require, and, to the extent that the administering body's resources permit, the development, as appropriate, of the reserve for the purposes for which it is classified.....'

Section 41 further provides:

*'The administering body shall in the exercise of its functions **comply with the management plan** for the reserve.....'*

THE COUNCIL'S APPROACH

The Council says however that, in relation to Manly, this obligation doesn't apply.

In its draft Management Plan for the other '200 plus' reserves in the Hibiscus Coast it says:

'Much of the dune system along the coastal frontage of the (Manly) park is located on unformed legal road and is out of scope of this plan.'

'While Auckland Council maintains this land, it is under the jurisdiction of Auckland Transport. The general policies and provisions of this plan will guide the local board's position and any future input into management or development of this area where it is sought.'

It doesn't make sense that there be a Management Plan for all the other reserves in the Hibiscus Coast (many of which are very small and of not much consequence) and (because of a technicality) not a management plan (either under the Reserves Act or otherwise) for one of the 'Coast's most prized recreation assets - Manly Beach.

THE CURRENT SITUATION

The Council recently decided to install 300 bollards to control beach parking and protect the grass and trees but this has met with such opposition that work has had to be stopped to enable its intentions to be reviewed.

If newspaper reports are correct, this decision was apparently made at staff level:

- as a routine work decision;
- after a proposal to use rocks or recycled posts had been rejected;

- without any expert reports;
- without a business case;
- without a plan to provide any alternative parking;
- without asking the Local Board for a formal direction;
- without seeking public input.

and after staff had told the Local Board members, at a workshop on 23rd September, to *'brace themselves'* for a public backlash about the loss of parking. (Reference Hibiscus Matters)

The unrest that there is now then was foreseen. But the Council needs to appreciate that, as evidenced by the two petitions that are currently circulating, it is very strong and it is not just because of the decision to install bollards. That is just the tip of the iceberg.

The real reason why people are so unhappy is because they have so many wider concerns about the whole beach, including the potential impact of whatever decisions are made regarding it on the surrounding roads - and because the Council does not have a plan (any plan), prepared through a public consultation process, relating to its future use and development - as it would legally be required to do, if all of the beach frontage land was a reserve. Reading the responses to the two petitions the local people are especially concerned about anything being done that will limit their ability to achieve easy vehicular access to the beach and to safely picnic or 'just sit and enjoy' the tranquillity and the view whenever they want.

Currently, decisions are being made in a fragmented way, without public consultation and apparently even when Board Members and staff know beforehand that there will be an adverse public reaction - or, worse, when action really is needed, not being made at all.

Also the local newspaper says the intention was to install bollards between the Manly Sailing Club and Cross Street. If that is correct it only addresses a part of the problem. The situation is probably worse between Cross Street and Beach Road – especially at the Beach Road end. **If only west of Cross Street is done more cars can be expected to go to the eastern end and make it even a bigger problem than it already is.**

SUBMISSION

I submit:

- (a) That it is critical that all of the public land adjacent to and around Manly Beach (including the public roads) be managed holistically.
- (b) That rather than publicly discuss the bollards' proposal in isolation (and notwithstanding that some of the land fronting the beach is a public road) the Council needs to urgently prepare a single long term plan for the whole area, including:
 - The formed road ('The Esplanade') along the beach,
 - All those pieces of land abutting the foreshore that are not formed road (e.g. between Nos 1-39 and 93-97)
 - The Manly Park Reserve- that includes:
 - all of the land at the entrance to the beach at the boat ramp;
 - the large area of flat open space on the other side of Laurence Street;
 - the Bowling and Tennis Club sites; (and)
 - the piece of land adjacent to the Bowling Club currently used for boat storage.
 - The Esplanade – Manly Beachfront (East) Reserve – being the grassed area fronting the beach between Brown Street and Beach Road;
 - The end of Brown Street where it abuts the beach;
 - The end of Beach Road where it abuts the beach;
 - The end of Cross Street where it abuts the beach;
 - The end of Ladies Mile where it abuts the beach;
 - The parking area at Moreton Drive; (and)
 - The traffic control/parking implications for all of the roads in the vicinity of the whole beach and of the park behind.

More often than not, whatever is done in any one of these areas will in some way impact one or more others.

- (c) That such a plan should be prepared in the same way as the Reserves Act requires if all of the land was a public reserve – that is to say:
- that it address all issues relating to future use, enjoyment, maintenance; protection, preservation and development of all of the above-listed pieces of public land;
 - that it is prepared through a public consultation process; (and)
 - that once adopted the Council ensures it is adhered to.

Manly Beach is an iconic part of the Whangaparaoa Peninsula and it is important everyone be given the opportunity to participate in an open process to decide how its values can best be protected and enhanced for the current and future generations. Matters addressed in the plan should include but not be limited to:

- Vehicular access and parking (including boat and trailer parking);
- Pedestrian access;
- Foreshore erosion control;
- Stormwater control;
- Playground facilities;
- Picnic tables and other seats;
- Barbecue facilities;
- Refuse facilities and litter control;
- Tree planting and beautification of the whole area generally;
- Boat access to the water;
- Ski Lanes
- Public conveniences;
- Leases and Licences (e.g. The Yacht, Bowling and Tennis Clubs);
- Use of the park area on the other side of Laurence Street;
- Signage;
- Lighting;
- Public Safety; (and)
- Any potential public wastewater issues that may affect the beach in future years (For example whether Watercare's decision to direct all wastewater from Millwater and Milldale to Army Bay is likely to require enlargement of the key wastewater pumping station at the end of Browns Road and the pipeline from it that runs along the beach towards Tindalls – and if so 'how' potential disruption, view, odour and noise issues can be avoided?).

An Advisory Committee of local residents should be appointed to work with the Council on preparation of the plan from the beginning **and** be involved in consideration of the submissions that are received during the public consultation process – not a plan just be prepared by (or commissioned by) the Council and the Council then seek submissions on that.

- (d) That jurisdiction for management of the legal road along the foreshore (known as 'The Esplanade') be reviewed to enable the whole area to be managed in future 'as one' - in a clearly prescribed manner designed to meet both beach and reserves' users', and local residents', needs.

Hi

We live in Laurence Street and have been aware of the degradation of the dunes on the Esplanade for about the last two years or more.

This is largely due to the additional volume of cars but also the type of vehicles...now mainly 4 wheel drives that mount the dunes taking off grass.

The Council proposal was a crude way of fixing this problem. There was no thought or finesse in the design. There needs to be consideration given to each tree and its surrounds. Some need protection and others don't. The same applies to other areas. Don't just put bollards in everywhere.

There was no feed back about where the cars would park with reduced space. Many vehicles will then park in Laurence street and as there are few yellow lines the street will become quite congested.

We want parking access to the beach.

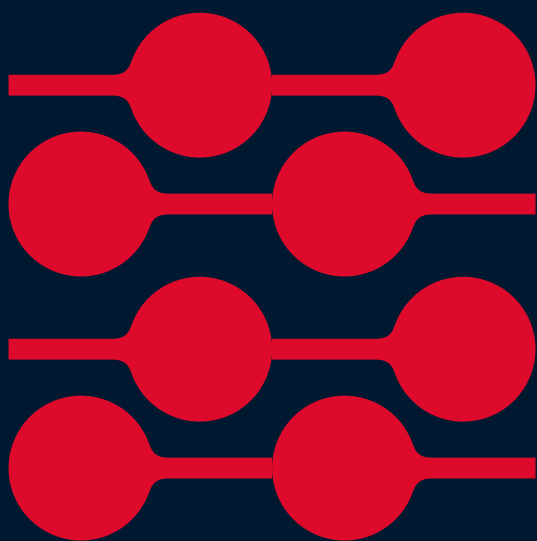
What's the point in our lovely Hibiscus Beaches if you can't get to them.

The same for Orewa Beach.

With the increased development parking is getting more difficult.

Regards

Consultation Proposal



Big Manly Beach Reserve, The Esplanade

Proposed Bollard Installation

Have Your Say – Public Consultation

November 2021



Big Manly Beach Reserve, The Esplanade

Background on Bollard Installation

1. Auckland Council is proposing to install timber bollards along sections of The Esplanade at Big Manly Beach to protect the reserve, trees and sand dunes from damage caused by vehicles parking here.
2. Visitors to the beach enjoy sitting and having picnics on the grass under the shade of the trees growing along The Esplanade.
3. If trucks and cars continue to park along these sections of The Esplanade, the area will turn to sand and gravel as has happened down the eastern end. However, installing the bollards will remove parking along 330m of the reserve.
4. Over recent years the concerns about anti-social behaviour especially at night-time has risen and an increased number of complaints have been received.
5. The bollards will not fully restrict parking along The Esplanade. There will still be parking on the beach side of the road, in areas that will cause the least harm to the dunes and trees. The berm on the southern side of The Esplanade will remain as is.
6. In October, bollards were about to be installed as part of the local board's work programme for 2021/2022. The community raised concerns with elected members and council staff who have postponed the installation so that people can give their feedback.
7. Council coastal and arborist specialists support the bollard proposal which aims to protect the Pohutukawa trees and the sand dunes from further damage. Here is what they had to say:
 - o *"The Pōhutukawa trees will positively benefit from having their root zones protected from vehicle movements and avoiding further damage to the tree roots. By making these improvements to the immediate environment of the trees, the health and longevity will be ensured for the continued public benefit"* – Auckland Council Urban Forest Specialist.
 - o *"The key coastal consideration is to minimise vehicle movements, which can destabilise the sand dunes or coastal fringe/edge inducing landward erosion and reduce dune vegetation cover leading to increasing windblown sand issues"* – Auckland Council Principal Coastal Specialist
8. Installing bollards will remove potential health and safety concerns with vehicles and pedestrians mixing on The Esplanade Reserve, in particular children weaving in between vehicles who are accessing the reserve for parking or reversing to leave it.
9. Installing bollards can prevent - the damage shown in images A-D. It will encourage recovery, provide shade, and safe picnic spaces for everyone in the community.

Image A



Image B



Image C



Image D



What is the plan?

10. Installing approximately 300 round bollards along The Esplanade.
11. Round timber bollards are driven into the ground (no concrete is involved). The methodology has been approved by arborists and will be completed under arborists supervision.
12. The bollards are approximately 1.2 – 1.5 metres apart and 60cm in height.
13. The bollards will be installed approximately 320 metres from Manly Sailing Club along The Esplanade towards Cross Street.
14. Two large ‘parking bays’ on the beach side of the road are proposed along this part of the Esplanade. Each bay will be able to accommodate between 3-5 cars. (Image E below)
15. The turning circle at the bottom of Cross Street will have no changes and will continue to allow for parking and access to the beach.
16. Parts of the eastern side of The Esplanade currently provide no access to vehicles. The plan is to replace broken half round bollards in this area.

- 17. The remaining stretch between Cross Street and Beach Road – The Esplanade (East) is to remain in its current condition. There are no changes proposed for this area.
- 18. The proposed alignment of bollards is outlined in Image E below. Blue lines are proposed ‘parking bays’, red lines show bollard alignment. Images F-H below also show what is proposed in the area.

Image E - Proposed alignment of bollards



Image F – Illustration showing one of the proposed parking bays



19. There are no changes proposed to eastern end of Manly beach. This is the area shown in Image G below.

Image G – No changes at the Beach Road end of The Esplanade



Image H – Parking remaining at Beach Road end of The Esplanade



Alternative car parking

20. Currently on busy summer days when The Esplanade car parking spaces are full, cars park on the surrounding streets including Laurence Street, Cross Street, Beach Road, Ladies Mile and Manly Park Avenue. They can also park on the road within Manly Park. As shown in Image I below.
21. We believe there is sufficient capacity on the existing roads and at Manly Park to accommodate the loss of car parking on sections of the Esplanade.
22. Council's proposal does not include the creation of any new car parking in the area.
23. Over the upcoming summer, Council staff will observe the volume of car parking on the surrounding streets on busy days to help provide advice back to the local board.
24. If bollards are installed after summer as per the timeline below, council staff will also monitor the effect the installation of the bollards has on car parking in the surrounding streets and if serious issues are being caused will review the car parking situation.

Image I – Existing on-street car parking (indicative) near Big Manly Beach that will continue to be available



What happens next?

- **November – December 2021**

Have Your Say – Public Consultation

Auckland Council are asking our community to have your say on how you want to see your reserve protected.

- **December 2021 – February 2022**

Auckland Council is planning to observe the activities over summer 2021/2022

- **January 2022**

Analyse consultation feedback from the community and finalise recommended plans

- **February 2022**

Present consultation results and recommended scope to Hibiscus and Bays Local Board

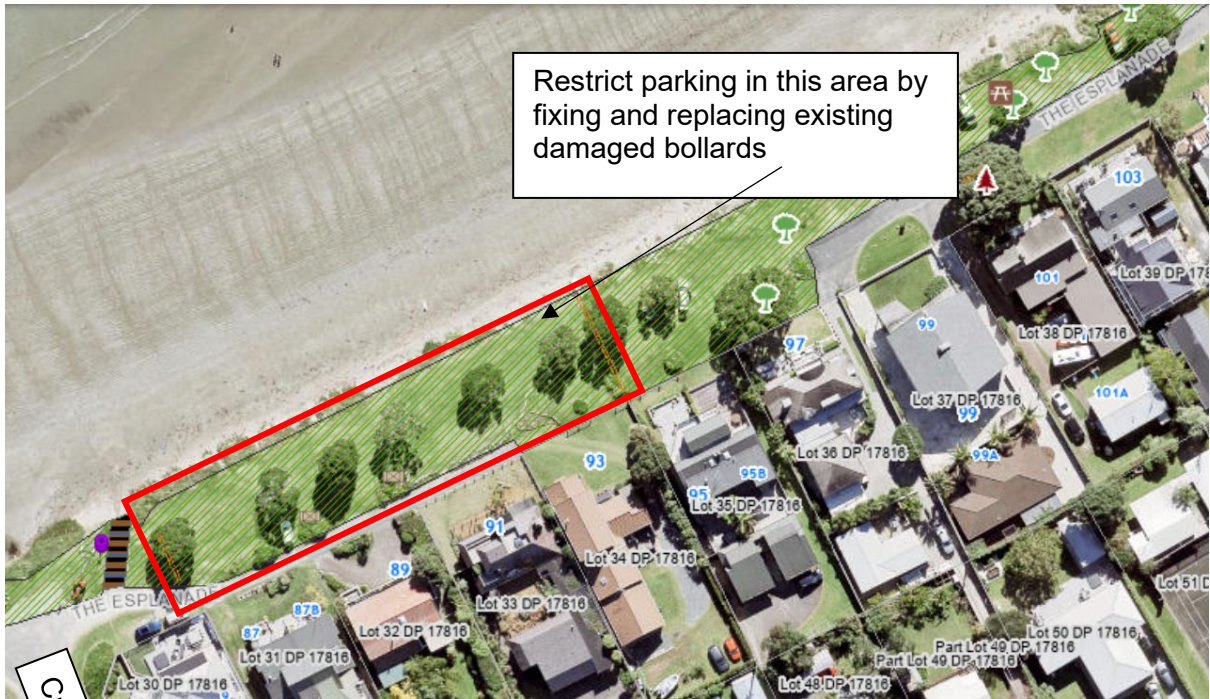
- **March 2022 – April 2022**

Complete installation of agreed scope

- **Summer 2022/2023**

Monitor car parking and effectiveness of installation of bollards

Attachment C: Cross Street Damaged bollards



Cross Street



Damaged bollards







Attachment D: Tree protection examples



Sediment related water quality programme

Maddison Jones – Senior Healthy Waters Specialist

Hannah Brightley – Relationship Advisor

February 2022



Background

Outcome 3 – a protected and enhanced environment

		2019/2020	2020/2021	2021/2022
822	Sediment related water quality testing	\$25,000	\$25,000	\$25,000



The Problem



- **Small sites are having an impact.**
- **Potential cumulative effects.**
- **Widespread problem across Tāmaki Makaurau.**



Original Scope



To gather information for at least 3 years around specific contaminants within the local area to understand the scale of the issue.



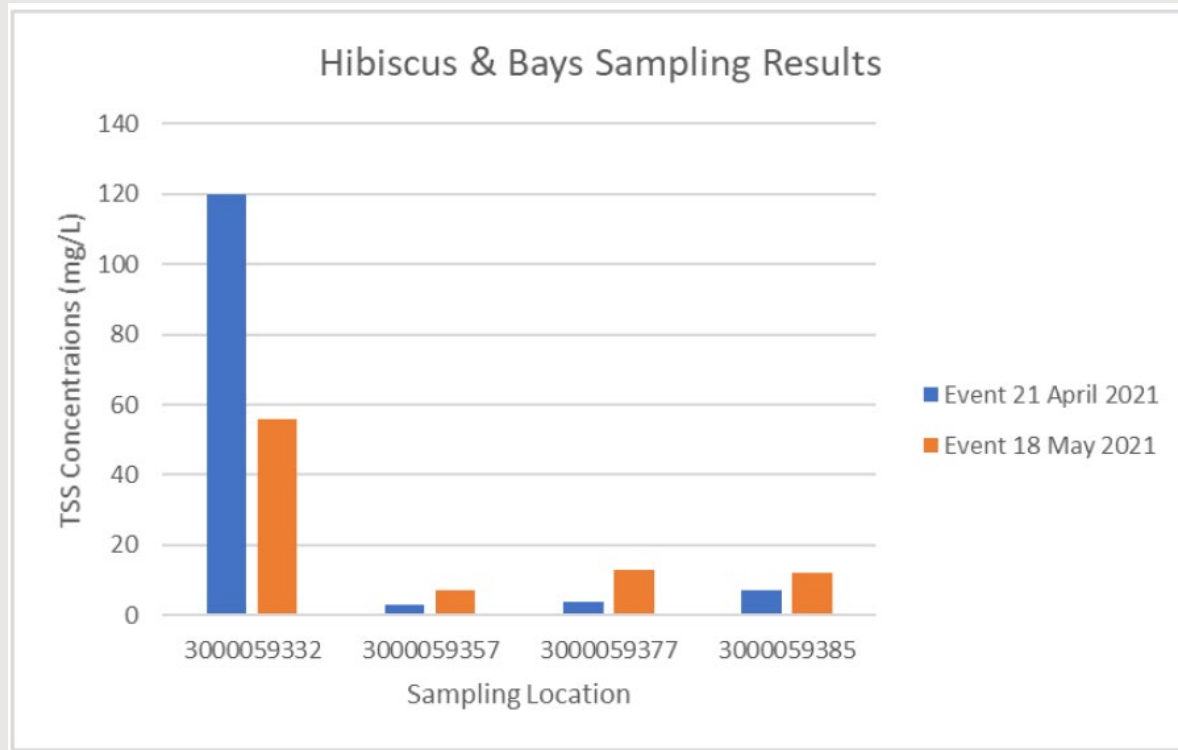
In the beginning - Symes Drive site



- All samples were tested for TSS (total suspended solids) - a proxy for how much sediment is in the water.
- No automated monitoring sites could be identified so manual sampling was agreed upon.



Symes Drive site (Until June 2021)



- **Only two samples with elevated sediment was able to be captured.**
- **This sampling showed high impact from sediment during high rainfall.**
- **This observation may have been inherently bias, due to the fact that only two samples were collected.**



Challenges with the 2019-2021 programme

COVID19 restrictions impacted sampling.

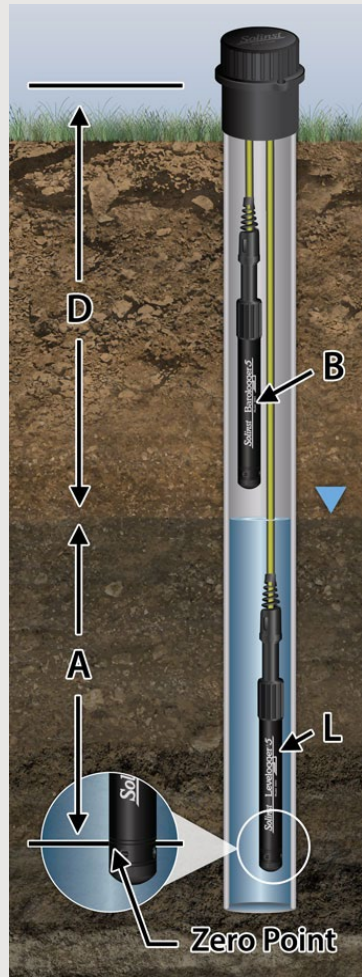
Automatic sampling technical/site difficulties.

Capturing the 'first flush' rainfall.

Meaningful data & time periods.



The current programme (2021/2022)

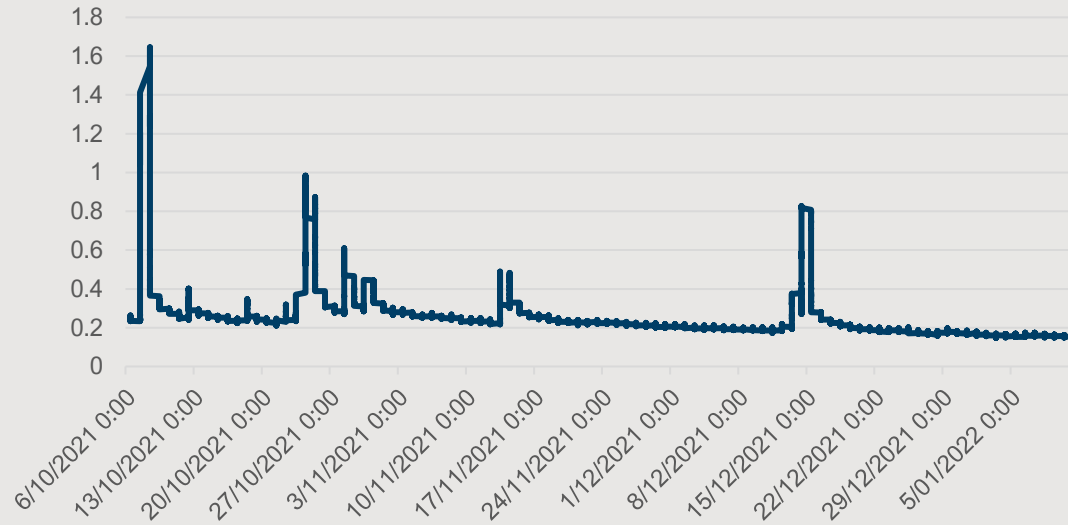


- Changed to a location suggested by the Active Compliance Team (Pacific Heights Road).
- Changed to continuous monitoring (via a sensor).
- Continued with data collection to understand impact of sediment from small earthworks site.
- Added a 'bonus' idea of using the information to inform the Active Compliance Team of issues.

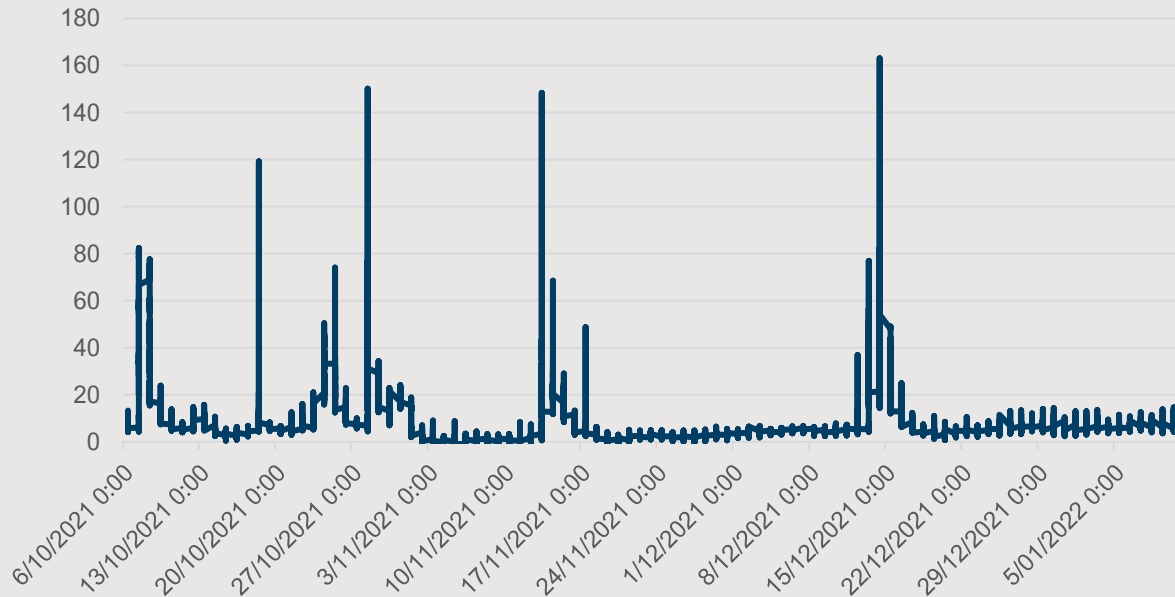


What have we seen so far?

Stream water level



Turbidity (a proxy for sediment)



- **large spikes in turbidity in accordance with large rainfall events.**
- **likely signalling significant sediment input from the catchment.**
- **some large spikes have been observed in lower rainfall levels.**



Active Compliance Team – follow up site visits

16 November 2021

Majority of the sites had controls in place however a few sites had poor controls and infringements and abatements notices were issued. After this site visit the data shows a far lower 'baseline' of sediment likely signalling ongoing compliance.

7 December 2021

(no major events just asked the Active Compliance Team to check as a small amount of rain had occurred).

No major concerns on site, small fixes were necessary.

25 January 2022

(recommended a follow up due to rain).

Controls were reflecting a high standard with certain companies setting very good examples. There was an odd rogue issue but overall it was of a high standard. The natural gully was well protected

More site visits have happened since this however the data is still to be analysed.



Summary Of This Project



Used continuous monitoring sensors to collect data to overcome challenges from previous years.



Collected data across two small sediment sites to better understand the impact of sediment from small sites.



Collaborated with the Active Compliance Team to conduct site inspections to relate and understand the peaks in the data.



Programme has provided evidence and contextualized the scale that small sites contribute to the sediment load within the catchment.



All recorded information will be shared across council to help inform other departments.



Next steps

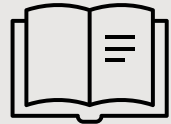
- **Data will continue to be collected and follow up site visits conducted until June 2022.**
- **A summary of results will be provided to the local board at the conclusion of the programme.**
- **The programme now has 3 years of data, staff recommend not continuing the sediment related water quality programme in 2022/2023.**



Regional next steps on small site sediment:



Site Safe project – education programme with builders about waste and sediment soon to begin



The strategic approach to sediment, designed to embed better approaches to sediment management across council. Update will be provided to Environment Change Committee in March 2022.



More compliance focused initiatives

***This list is not exclusive to everything conducted regionally in the sediment space, just workstreams of interest.**



Te Ao Māori and community led conservation programme update

Partnering with Ngā Maunga Whakahii o Kaipara
and Ngāti Manuhiri

Ellice Protheroe and Sinead Brimacombe – Conservation Advisors, Environmental Services
Hannah Brightley – Relationship Advisor

24 February 2022



Te Ao Māori and community led conservation (#507)

- support community-led conservation groups to learn about Te Ao Māori
- grow relationships with local iwi, through Te Ao Māori workshops

2021/2022	2022/2023	2023/2024
\$5,000	\$3,000	\$3,000
<ul style="list-style-type: none">• Delivery planning• Building iwi capacity & capability (if required)	<ul style="list-style-type: none">• Workshops developed and delivered	



Content

- Alignment to the Hibiscus and Bays Local Plan
- Programme background
- Interdepartmental collaboration
- Partnership benefits and progress
- Next phase of delivery
- Future funding proposal
- Questions



Alignment to the Hibiscus and Bays Local Plan

Outcome 1: A connected community

Objective

We have a strong relationship with Māori and embrace our Māori identity, heritage, and culture

Key initiatives

Strengthen relationships with local iwi to increase engagement and participation in local decision making

Increase the exposure of te Reo Māori in our local board area through naming and signage opportunities

Support mana whenua to tell stories of Māori cultural heritage and knowledge throughout our parks and open spaces network



Outcome 1: A connected community

Objective

Hibiscus and Bays communities are supported, connected and vibrant

Key initiatives

Ensure our diverse communities feel supported and have a sense of belonging through the delivery of activities, events and programmes

Acknowledge and support local community groups such as those working to enhance youth development, family support, multi-cultural experience and inclusion, older adult connection, and inter-generational participation

Engage and support groups to lead events and placemaking projects that enrich and enhance our communities

Support our young people to engage in communities and have access to a wide range of opportunities to help them thrive locally

Identify and promote community programmes, activities, and services that encourage connectedness, participation, well-being, learning, active leisure, and volunteer opportunities for older adults

Alignment to the Hibiscus and Bays Local Plan

Outcome 1: A connected community

Objective

We have a strong relationship with Māori and embrace our Māori identity, heritage, and culture

Key initiatives

Strengthen relationships with local iwi to increase engagement and participation in local decision making

Increase the exposure of te Reo Māori in our local board area through naming and signage opportunities

Support mana whenua to tell stories of Māori cultural heritage and knowledge throughout our parks and open spaces network

Outcome 1: A connected community

Objective

Hibiscus and Bays communities are supported, connected and vibrant

Key initiatives

Ensure our diverse communities feel supported and have a sense of belonging through the delivery of activities, events and programmes

Acknowledge and support local community groups such as those working to enhance youth development, family support, multi-cultural experience and inclusion, older adult connection, and inter-generational participation

Engage and support groups to lead events and placemaking projects that enrich and enhance our communities

Support our young people to engage in communities and have access to a wide range of opportunities to help them thrive locally

Identify and promote community programmes, activities, and services that encourage connectedness, participation, well-being, learning, active leisure, and volunteer opportunities for older adults



Alignment to the Hibiscus and Bays Local Plan

Outcome 3: A protected and enhanced environment

Objective

Continue to align and support community and volunteer groups, schools, and iwi to enhance and protect our natural environment

Key initiatives

Continue to support community restoration groups and sustainable education initiatives that protect and enhance our natural assets

Support environmental networks that create public awareness and collaboration to restore the natural environment and eradicate pest animals and plants in the Hibiscus and Bays area

Enable strong connections for our environmental groups to share their expertise and deliver initiatives that protect and enhance our natural environment

Partner with Māori to understand areas of environmental significance and create opportunities for collaboration between iwi and environmental groups on projects of mutual interest

Outcome 3: A protected and enhanced environment

Objective

Support communities to live more sustainably, and prepare for the impacts of climate change

Key initiatives

Support residents to live more sustainably through local community-led programmes

Continue to encourage and support businesses, schools, and events to develop sustainable practices

Advocate to the Governing Body to use the waste levy to improve sustainable waste management services for public spaces, residents, businesses, and events

Support the expansion of existing facilities and the development of recycling and organic waste centres for Hibiscus and Bays

Support the development of coastal management plans to assess the implications of climate change and how these might be managed



Alignment to the Hibiscus and Bays Local Plan

Outcome 3: A protected and enhanced environment

Objective

Continue to align and support community and volunteer groups, schools, and iwi to enhance and protect our natural environment

Key initiatives

Continue to support community restoration groups and sustainable education initiatives that protect and enhance our natural assets

Support environmental networks that create public awareness and collaboration to restore the natural environment and eradicate pest animals and plants in the Hibiscus and Bays area

Enable strong connections for our environmental groups to share their expertise and deliver initiatives that protect and enhance our natural environment

Partner with Māori to understand areas of environmental significance and create opportunities for collaboration between iwi and environmental groups on projects of mutual interest

Outcome 3: A protected and enhanced environment

Objective

Support communities to live more sustainably, and prepare for the impacts of climate change

Key initiatives

Support residents to live more sustainably through local community-led programmes

Continue to encourage and support businesses, schools, and events to develop sustainable practices

Advocate to the Governing Body to use the waste levy to improve sustainable waste management services for public spaces, residents, businesses, and events

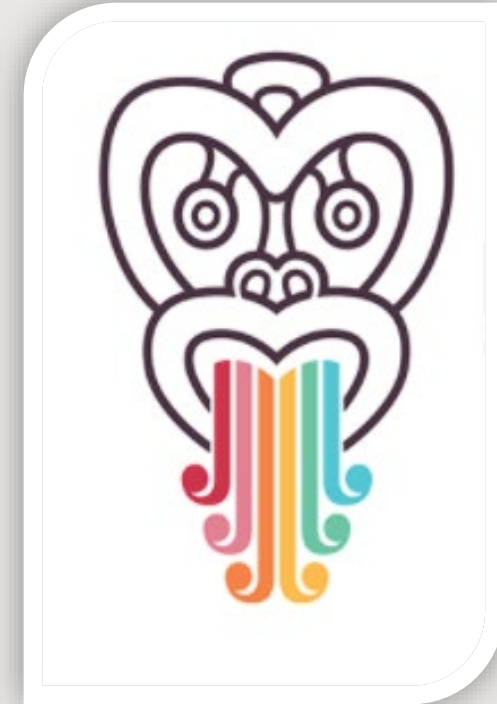
Support the expansion of existing facilities and the development of recycling and organic waste centres for Hibiscus and Bays

Support the development of coastal management plans to assess the implications of climate change and how these might be managed



Programme background

- Link with Hibiscus and Bays Local Board plan: “*Partner with Māori to understand areas of environmental significance and create opportunities for collaboration between iwi and environmental groups on projects of mutual interest*”
- Identified need/interest of community groups to connect with local iwi, gaining understanding of Mātauranga Māori, sites of significance and historical cultural land uses
- Early connection was made with Ngāti Manuhiri and Ngā Maunga Whakahii o Kaipara to see if this was of interest
- Connected Communities also connect community with mana whenua as well as other departments such as Healthy Waters.



Interdepartmental collaboration



- Connected Communities also connect community with mana whenua. Through working collaboratively with Connected Communities we can ensure that most community groups have the chance to learn more about Te Ao Māori.
- The Environmental Services Community Conservation and Engagement team are supporting this programme as it is an opportunity to connect community with their local mana whenua. This is something that our department has been looking at improving, so this project provides a great example of how this might work for the rest of the region.
- Working closely with Infrastructure and Environmental Services' Māori Outcomes and Engagement advisors throughout the process. They have connected us to the Healthy Waters team to join up engagement with iwi.



Leveraging additional budget in 2021/2022

	Hibiscus & Bay LB LDI Budget	CC&E Budget	Connected Communities Budget HB	Connected Communities Budget RD	Total
Total programme budget	\$5,000	\$10,000	\$5,000	\$20,000	\$50,000
Ngāti Manuhiri Allocation	\$2,500	\$5,000	\$ -	\$20,000	\$27,500
Ngā Maunga Whakahii o Kaipara Allocation	\$2,500	\$5,000	\$5,000	\$ -	\$12,500



Te Ao Māori Programme- Relationships

✓ The Relationship Continuum

Coexistence

know about each other but don't need to come together

Networking

informal discussion; information sharing; autonomy retained

Cooperation

acknowledge common interests ; come together on specific issues; some exchange of resources; no fixed long-term relationship; autonomy may be a little reduced

Collaboration

plan together; invested relationships; based on shared principles and negotiated and agreed actions; commitment to pool resources and practices on projects; autonomy on projects reduced

Partnership interdependence to achieve results; shared goals and co-created plans; shared principles; new processes and structures possible; commitment to mutual benefits, accountability and decision making; sustained relationships; autonomy on initiative reduced

Partnership with Ngā Maunga Whakahii o Kaipara

- Ngā Maunga Whakahii o Kaipara have been engaged on this programme and are enthusiastic about setting up a process to respond to the requests from community and to share their kaupapa with the wider community
- The cultural inductions would be led by the environmental lead staff and the kaitiaki rangers of Ngā Maunga Whakahii o Kaipara
- Ngā Maunga Whakahii o Kaipara will also create a decision document for community so community understands the process for engaging.



Partnership with Ngāti Manuhiri

- Good two way conversations with Ngāti Manuhiri, enquiring how Ngāti Manuhiri could benefit and how they would like to approach engagement with community.
- Positive conversations and feedback
- A co-delivery approach formed
- Ngāti Manuhiri found the Te Ao Māori programme a significant opportunity to enable section two of the Community Restoration guide: Mātauranga, wāhi tapu and tikanga, and engagement.
- Ngāti Manuhiri appreciate where we can look to provide capacity and enablement, and Ngāti Manuhiri lead the design of the approach for delivery and implement the programme.



Benefits and Progress of Te Ao Māori Programme

- Have appreciated seeing our collaborative approach with incorporating the Restoration Guide and working with Connected Communities and Healthy Waters.
- Many iwi have little cultural capacity. Cultural inductions are important to enable iwi to establish an approach and process for managing engagement.
- Cultural Inductions are an aspiration of the iwi. This programme has provided Ngā Maunga Whakahii o Kaipara an avenue for working with community groups and sharing Te Ao Māori knowledge.
- Ngāti Manuhiri see this as a good opportunity to help support the process of sharing knowledge and building engagement with community.
- Ngāti Manuhiri had particular interest in developing hapu management plan. Which is where they see how to enable section two of the Community Restoration guide: Mātauranga, wāhi tapu and tikanga, and engagement.



Next Steps:

**Work with both iwi
to develop content**



**Establish
dates/details first
Cultural Inductions**



**Establish a
funding
agreement with
Ngāti Manuhiri**



**Share with
community**



Proposal to increase LDI funding in 2022/2023 & 2023/2024

	2022-2023	2023-2034
Original in principle budget (approved in June 2021)	\$3,000	\$3,000
Proposed future budget <i>*will be brought to the board in 2022/2023 work programme discussions in March 2022</i>	\$5,000	\$5,000



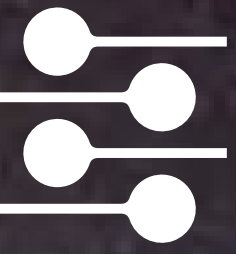
Proposal to increase LDI funding in 2022/2023 & 2023/2024

Additional \$2,000 in budget will allow for:

- at least 2-3 workshops to occur every year to support conservation community groups to attend and upskill in understanding Te Ao Māori
- groups to take appropriate steps for keeping their projects culturally safe for the area they are working in and form good relationships with iwi within the rohe area.



Questions



Ellice Protheroe and Sinead Brimacombe

