

Hibiscus and Bays Local Board Workshop Programme


Date of Workshop: Tuesday 9 April 2024
Time: 10:00am – 2:00pm
Venue: Local board office – 2 Glen Road, Browns Bay
Apologies:

| Item | Time | Workshop Item | Presenter | Governance role | Proposed Outcome(s) |
|------|---------|--|--|------------------|---|
| | | Welcome and apologies | Gary Brown Chairperson | | |
| 1. | 10:00am | Value For Money Pool and Leisure Network Recommendations (NON-PUBLIC) | Chantelle Subritzky Head of Value For Money Tim Jeffery Contractor Garth Dawson Principal Pools and Leisure Specialist Jessica Grant Data Analyst | | |
| 2. | 11:00am | Stillwater Community Association lease (NON-PUBLIC) | Chan Park Community Lease Specialist | | |
| 3. | 11:30am | Hibiscus and Bays Local Board Readiness and Response Plan Attachment <ul style="list-style-type: none"> Presentation: Hibiscus and Bays Local Board Emergency Readiness and Response Plan | Glenn Browne Senior Community Planning and Readiness Zoe Marr Community Planning and Readiness Manager | Keeping informed | Receive an introduction to Auckland Emergency Management and provide feedback on the Hibiscus and Bays Local Board Readiness and Response Plan. |

| | | | | | |
|----|---------|---|--|------------------|---|
| 4. | 12:00pm | <p>Parks and Community Facilities update</p> <p>Attachments</p> <ul style="list-style-type: none"> • Presentation: Edith Hopper – Playground Renewal • Presentation: Cranston Street Reserve – renew play space | <p>Sandra May Manager Area Operations</p> <p>Prakash Thakur Work Programme Lead</p> | Keeping informed | Receive an update on Parks and Community Facilities activities and provide feedback on playground renewals at Edith Hopper and Cranston Street Reserve playgrounds. |
| | 12:30pm | BREAK | | | |
| 5. | 1:00pm | <p>Infrastructure and Environmental Services update</p> <p>Attachments</p> <ul style="list-style-type: none"> • Presentation: Green Your Stream Hibiscus and Bays Storm Recovery and Resilience Project • Work Programme ID 4004 – Hibiscus and Bays Storm Recovery and Resilience | <p>Rita Kpodonu Senior Healthy Waters Specialist</p> <p>Mallika Krishnamurthy Relationship Coordinator</p> | Keeping informed | Receive an update on work programme ID4004 – Hibiscus and Bays Storm Recovery and Resilience. |
| 6. | 1:30pm | <p>2024/2025 Hibiscus and Bays Grants Programme Review</p> <p>Attachment</p> <ul style="list-style-type: none"> • Presentation: Hibiscus and Bays Local Board Grants Programme 2024/2025 | <p>Vincent Marshall Grants Advisor</p> | Keeping informed | Review and provide feedback on the Hibiscus and Bays Local Board Grants Programme for 2024/2025. |
| | 2:00pm | Workshop concludes | | | |

Role of workshop:

- (a) Workshops do not have decision-making authority.
- (b) Workshops are used to canvass issues, prepare local board members for upcoming decisions and to enable discussion between elected members and staff.
- (c) Workshops are not open to the public as decisions will be made at a formal, public local board business meeting.
- (d) Members are respectfully reminded of their Code of Conduct obligations with respect to conflicts of interest and confidentiality.
- (e) Workshops for groups of local boards can be held giving local boards the chance to work together on common interests or topics.



Hibiscus and Bays Local Board Emergency Readiness & Response Plan

Introduction

Glenn Browne

Senior Community & Planning Readiness Advisor

April 2024



**Auckland
Emergency
Management**
Tokonga Mate Ohotata o Tamaki Makaurau



Workshop purpose

1. To introduce Auckland Emergency Management:
 - a) revised organisational structure, and
 - b) planning and readiness priority work areas
2. To introduce the Local Board Emergency Readiness & Response Plan (ER&R Plan) concept including:
 - The ER&R Plan purpose
 - Key information and content, and
 - Proposed timeline for development of the Plan
3. To seek expressions of interest for a Local Board Emergency Readiness & Response Lead.
4. Other support provided by Auckland Emergency Management
5. Next steps



**Auckland
Emergency
Management**
Tokonga Mate Ohotata o Tāmaki Makaurau



- 
- 1. Auckland Emergency Management**
 - a) revised organisational structure, and**
 - b) planning and readiness priority work areas**



**Auckland
Emergency
Management**
Tokonga Mate Ohotata o Tamaki Makaurau



Background

- A number of reviews were conducted into the Auckland Anniversary floods and Cyclone Gabrielle response
- A key recommended change saw the shift from a **resilience** focussed approach to **planning and preparedness**
- **Aug–Oct 2023** - AEM structural change process
- **28 October 2023** - New organisational structure goes live
- **December 2023** - Community Planning & Readiness team established



**Auckland
Emergency
Management**
Tokonga Mate Ohotata o Tāmaki Makaurau



Auckland Emergency Management - Structure



Adam
Maggs

Acting General Manager



Steve
Jones

**Acting Head of
Capability and Strategy**



John
Cranfield

Head of Operations



John Cavanagh

**Head of Business and
Welfare**



Anna Wallace

Head of Planning

The team



Zoe Marr

Community Planning and Readiness Manager

Senior Community Planning and Readiness Advisors



Anita Fraser



Andrew Peteru



Leilani Maloto



Jessica Donaldson



Reg Phillips



Glenn Browne



Bex Ah Fook

Local Board areas

- Franklin
- Manurewa
- Papakura

- Howick
- Mangere-Otahuhu
- Otara-Papatoetoe

- Albert-Eden
- Maungakiekie-Tamaki
- Puketapapa

- Kaipataki
- Devonport-Takapuna
- Waiheke

- Aotea GB
- Orakei
- Waitemata

- Hibiscus & Bays
- Rodney
- Upper Harbour

- Henderson Massey
- Whau
- Waitakere Ranges

The Planning Unit - Key focus areas

Supporting planning and readiness activities specifically with:

Local boards and communities

Mana whenua, mātāwaka and marae

Disproportionately affected communities e.g.

Youth, Culturally and Linguistically Diverse,
Disability, Age Concern etc.

Business communities



**Auckland
Emergency
Management**
Tokonga Mate Ohotata o Tāmaki Makaurau



Community Planning & Readiness Team

- Key priorities and deliverables

- To ensure **local readiness supports local response** by:
 - Working with local boards to prepare, communicate and embed Local Board Readiness and Response Plans
 - Reviewing community preparedness survey results (twice yearly) to monitor progress
- To ensure that Auckland's diverse communities have increased levels of preparedness by:
 - Building relationships and capability
 - Encouraging and supporting communities to develop their own community resilience plans
 - Identifying those communities who have capacity and capability to assist in a community response

“Whatever the problem, community is the answer”

Meg Wheatley



**Auckland
Emergency
Management**
Tōkanga Mātō Ohōlata o Tāmaki Makaurau





Key focus to date

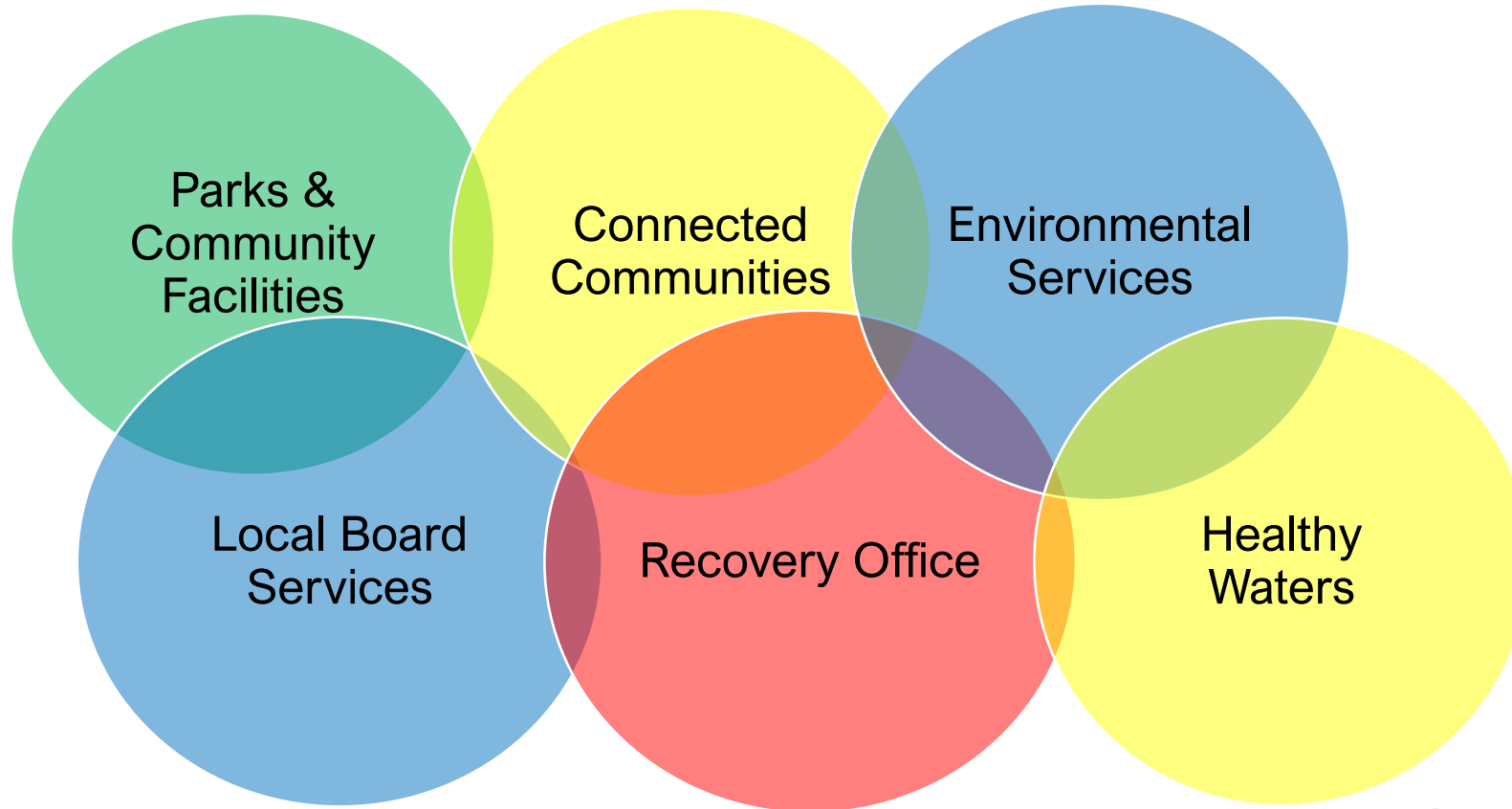
- Relationship development
- Attending Resilient Communities Group meetings: Browns Bay
Rothesay Bay Resilient Communities Group, Mid Bays Resilient
Communities Group, Whangaparāoa
- Supporting with the development of further CRG
- Creating community emergency readiness presentations



**Auckland
Emergency
Management**
Tokonga Mate Ohotata o Tamaki Makaurau



Collaborative partnerships



Civil Defence

Communities, organisations **and** government working together to get ready, and get through, an emergency. **We are all Civil Defence.**



**Auckland
Emergency
Management**
Tokonga Mate Ohotata o Tāmaki Makaurau





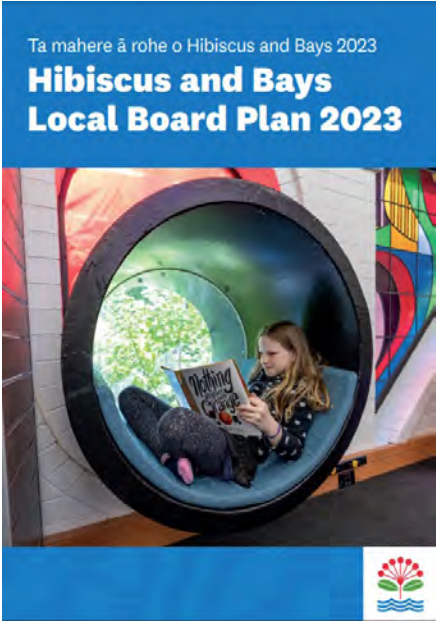
2. Local Board Emergency Readiness & Response Plans



**Auckland
Emergency
Management**
Tokonga Mate Ohotata o Tamaki Makaurau



Strategic context



Key initiative:

Support the development of community led resilience networks in our area, so our community and organisations will know who does what, where to get information and how to help, including in emergencies.

FY24 LB Work Programme

ID#3976 HBLB, Community and business emergency response plans and resilience programme

Group Plan Action 15

Work with local boards to prepare, communicate and test Local Board Readiness & Response Plans



**Auckland
Emergency
Management**
Tokonga Mate Ohotata o Tāmaki Makaurau



Local Board Readiness & Response Plans

- Purpose

A publicly available, community facing document that provides information on

- how people living and working in the local board rohe can prepare for emergencies.
- localised procedures and advice to prepare and respond to hazards faced by this specific local board area.
- what to do and where to go in an emergency response.



**Auckland
Emergency
Management**
Tokonga Mate Ohotata o Tāmaki Makaurau



Key information and content

- Specific hazards or areas of concern in local board area
- Information for households on how to prepare for an emergency
- Information about specific community and/or resilience groups, community resilience plans
- Relationships with Iwi
- Location of potential Civil Defence Centres in Local Board rohe and other potential assets for CDCs or shelters.
- Where to go for information including specific radio stations and other communication methods.
- The role of the local board in an emergency (Refer [Elected Members Emergency Management Guide](#)).



**Auckland
Emergency
Management**
Tokonga Mate Ohotata o Tāmaki Makaurau



Indicative timeline for Plan development

April

Workshop 1:
Introductory workshop with Local Board

Purpose:

- To agree approach.
- To nominate working group.

May

Workshop 2: 14 May

August Purpose:

- To workshop Local Board draft plan and receive feedback.
- To identify key community groups to test plan with.

August

Workshop 3: 20 August

Purpose:

- To agree final draft Local Board Plan.
- To agree communication plan.

October

Business meeting:

October

Purpose:

- To adopt plan.
- Commence community engagement as per Communication and Engagement Plan.

Drafting of Local Board Emergency Readiness & Response Plan

*Local Board Working Group (or representative(s)),
Senior AEM Advisor, Local Board Advisor(s)*



**Auckland
Emergency
Management**
Tokonga Mate Ohotata o Tāmaki Makaurau





3. Other support



**Auckland
Emergency
Management**
Tokonga Mate Ohotata o Tamaki Makaurau



How we're going to keep you informed

- A dedicated Auckland Emergency Management Senior Advisor:
 - *Look for me in your office!*
- Auckland Emergency Management e-newsletter **(Quarterly)**
- Appointment of a Local Board Emergency Readiness & Response Lead
- Establishment of a Local Board Emergency Readiness & Response Forum **(Quarterly)**
 - Purpose: To share updates related to emergency management and response, to share learnings and experiences across Local Boards areas, to build knowledge and confidence
 - Attendees: Emergency readiness and response lead representation from 21 Local Boards
 - Content: Presentations, Auckland Emergency Management and related updates, workshops
- Updates to the Local Board chairs forum + Local Board workshops **(As required)**
- Opportunities for capability building depending on need **(As required)**



**Auckland
Emergency
Management**
Tokonga Mate Ohotata o Tāmaki Makaurau



4. Next steps



**Auckland
Emergency
Management**
Tokonga Mate Ohotata o Tamaki Makaurau



Next steps

1. Agree proposed process and timeframe for ER&R Plan development
2. a) Nominate an Emergency Readiness & Response (ER&R) Lead
b) Formalise ER&R Lead through Business meeting report.
3. Nominated Lead(s), Local Board Advisor, Senior AEM Advisor, Community Braker and other (as required) engagement on first draft of the Local Board Emergency Readiness and Response Plan
4. Workshop 2: June (tbc)
 - Presentation of the first draft Plan
 - Discussion and feedback
 - Identification of key community groups with whom to test the draft Plan



**Auckland
Emergency
Management**
Tokonga Mate Ohotata o Tāmaki Makaurau



Patai?



**Auckland
Emergency
Management**
Tokonga Mate Ohotata o Tāmaki Makaurau





Edith Hopper – Playground Renewal

Hibiscus and Bays Local Board – 09/04/2024

Sandra May – Area Manager, Parks and Community Facilities



Purpose

- Present the Have Your Say (HYS) results.
- Present the proposed concept design.
- Receive feedback and support of the design.
- Outline next steps.

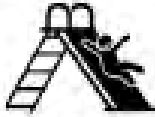
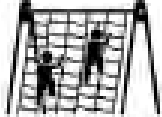
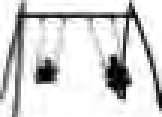



Edith Hopper Park – renew play space - current status



- A) Wood chip soft fall and edging.
- B) Basket swing and shade sail location.
- C) Swing set location.
- D) Module with sliding, hanging and climbing location.

CURRENT PLAY EXPERIENCES:

| | | | |
|---|---|---|---|
|  |  |  |  |
| Sliding | Climbing | Swinging | Hanging |



2

NEARBY PLAYGROUNDS

Edith Hopper Playground Renewal | March 2024

PLAYGROUNDS WITHIN 800m RADIUS OF EDITH HOPPER:



MANLY PLAYGROUND

Mixed Ages Play

- Module with slide
- Swing set with basket swing
- Climbing frames and bars
- Wobby bridge



WHANGAPARAOA SCHOOL

Mixed Ages Play

- Module with sliding
- Climbing, hanging, spinning, and rocking play
- Learn to ride trail
- Swing set with basket swing
- Nature play
- Parkour trail
- Rock climbing wall



Project background

- The renewal of a local neighborhood play space including equipment, drainage and edging.
- Parks and Community Facilities (P&CF) undertook condition grading audit of current assets identifying the need for renewal.
- Two other playgrounds local to Edith Hopper Park
 - Manly Park and Whangaparaoa School.
- Healthy Waters – a concept design has been developed for the adjacent stream. The proposed design does not interfere with any high-level design elements of the Healthy Waters project.



Strategic assessment and alignment

- Strategic assessment was undertaken by P&CF identifying the need for renewal and alignment with overall local board plan.
- The renewal of this play space will align with the Auckland Plan of encouraging a more active lifestyle for youth in the local community.
- The HB LB Plan was considered with regard to people (consultation), environment (waterways and nature play), and communities (accessibility and inclusion).





**Engagement
and
Consultation**

Community engagement/consultation approach included:

- Have Your Say
- Letter drop
- Posters on site (park)
- Key stakeholders' engagement



Engagement and Consultation

- Have Your Say: 29/09/23 - 19/10/23
- HYS online feedback: 79 respondents

Playground Renewal

AK
HAVE
YOUR
SAY

Edith Hopper Park



The Edith Hopper Park playground has come to the end of its life and it is time to renew the playground. We are looking for your feedback now!

Let us know what you would like to have included for whanau (families) and rangatahi (young people).

Have Your Say from 29th September to 26th October 2023

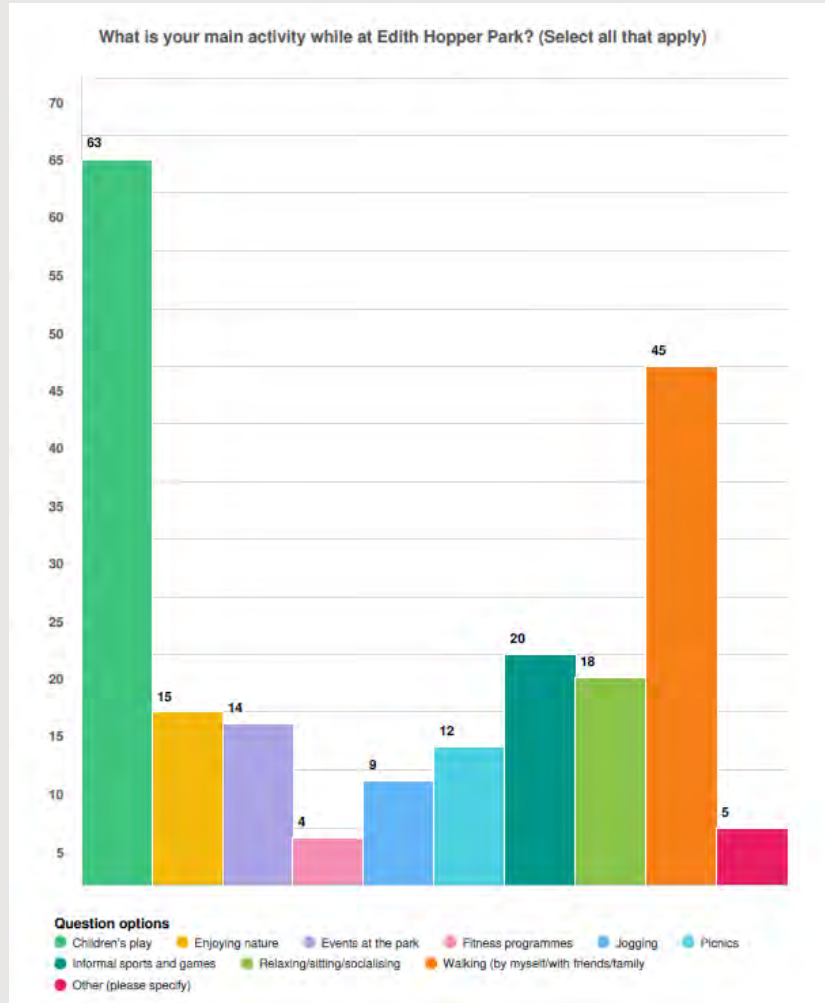
Give feedback online at [akhaveyoursay.nz](https://www.akhaveyoursay.nz) or email parksnorthfeedback@aucklandcouncil.govt.nz



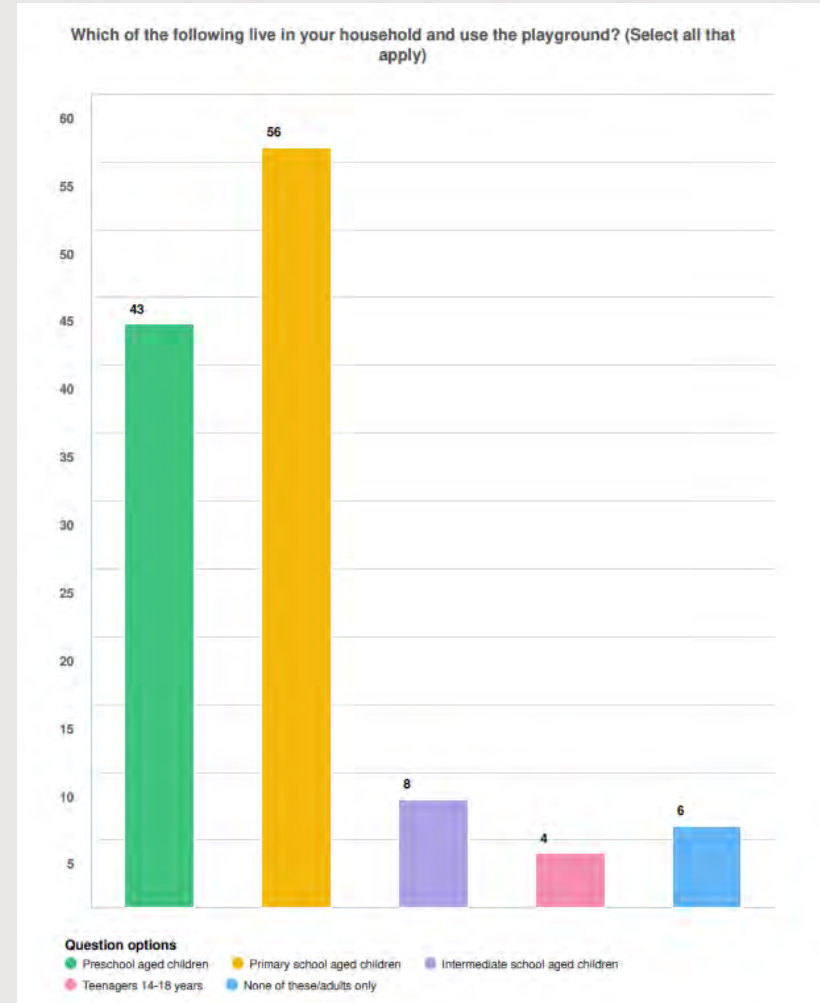
Engagement and Consultation - HYS results



Graph 1 – Main activity.



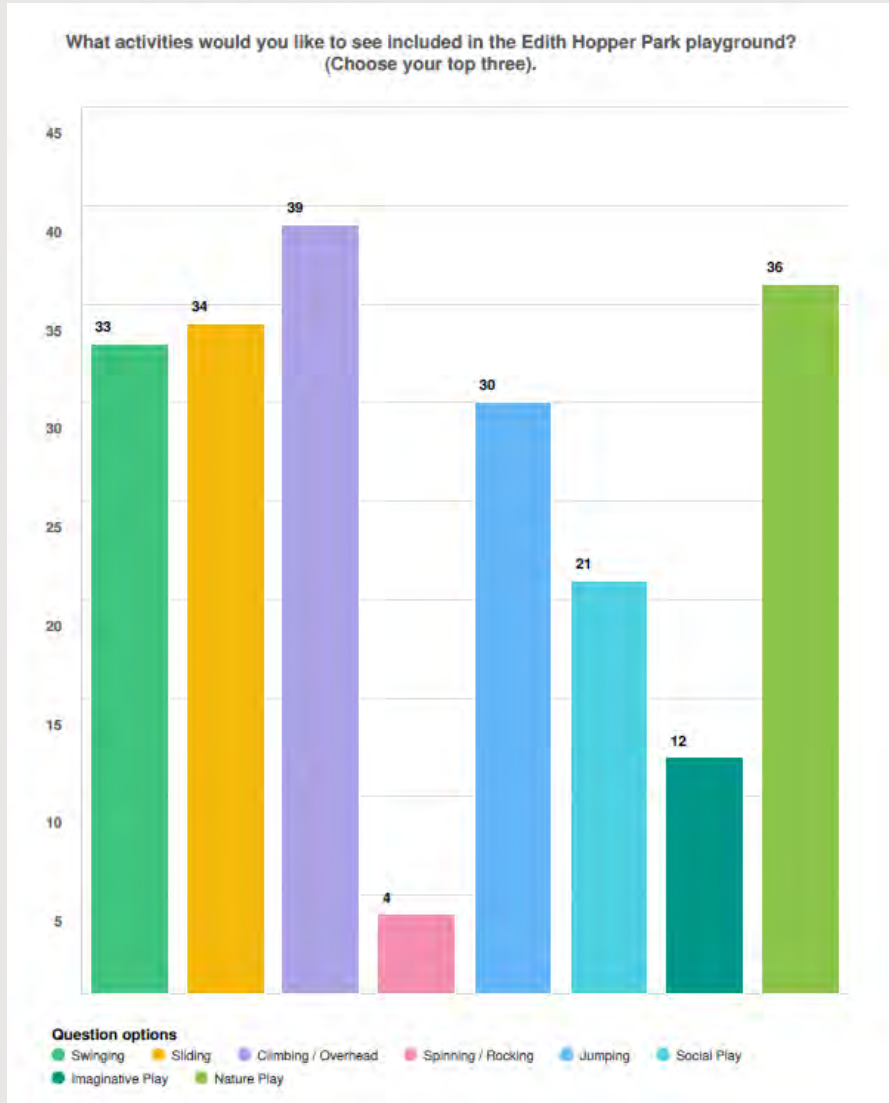
Graph 2 – Demographics.



Engagement and Consultation - HYS results



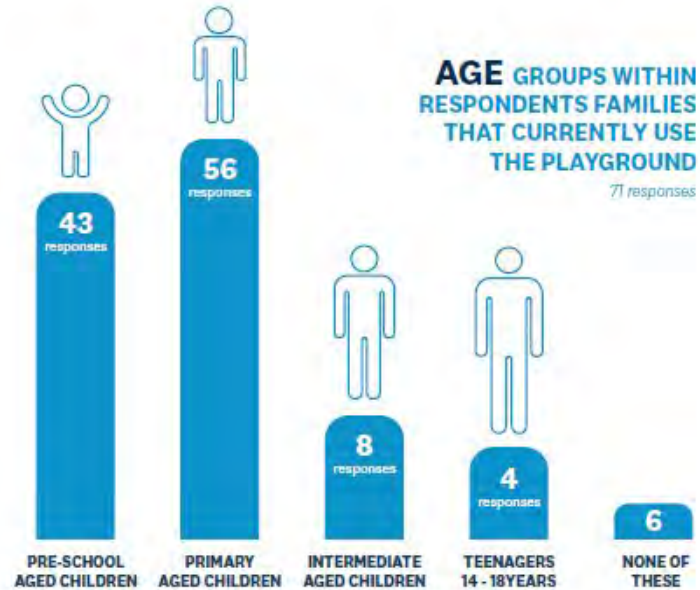
Graph 3 – Desired equipment.




Engagement and Consultation - Summary

The public survey was open for 5 weeks between 20th September 2023 and 30th October 2023. Approximately 71 people responded to the survey questions.

A summary is outlined below:



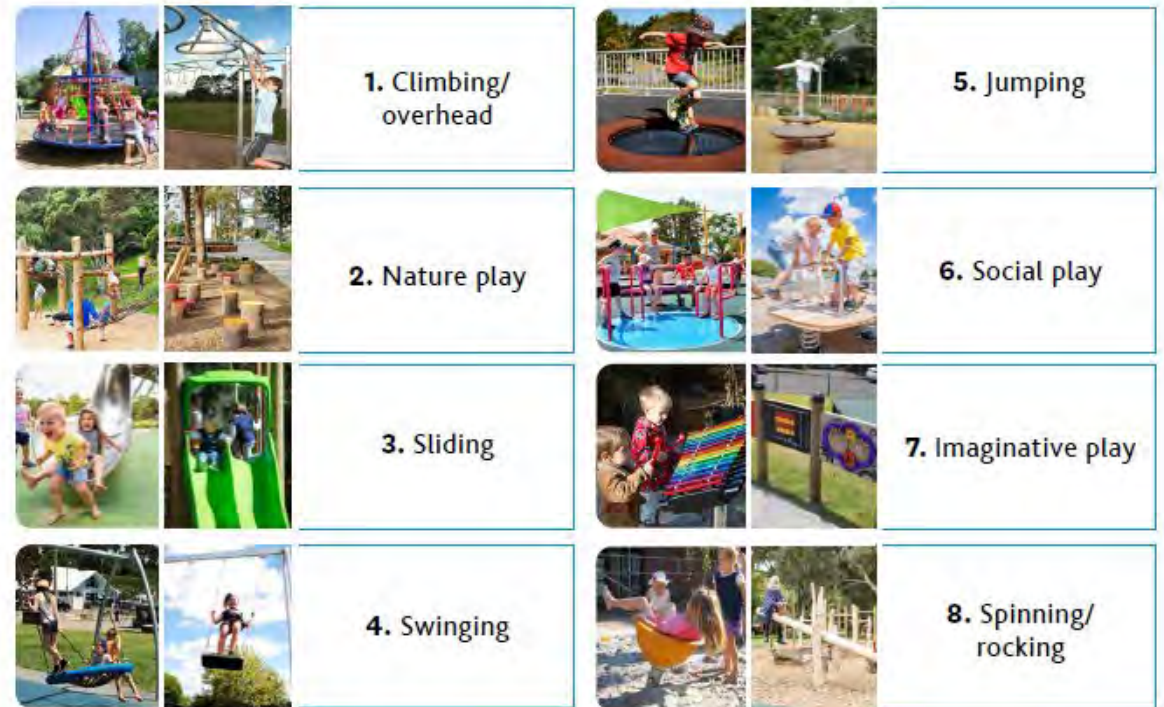
1.4% 
OF RESPONDENTS HAVE SOMEONE IN THEIR HOUSEHOLD WITH A **DISABILITY**
71 responses

PLAY EXPERIENCES

RESPONDENTS WOULD LIKE TO SEE INCLUDED IN THE NEW PLAYGROUND

(1 = MOST DESIRED, 8 = LEAST DESIRED):

70 responses





**Engagement
and
Consultation**

Stakeholder engagement and feedback

- **Whangaparaoa Primary School**
- P&CF Staff had an engagement session with students from the school
- The student's top activity choices were:
 - Jumping
 - Spinning
 - Spinning
 - Carousel
 - Slides

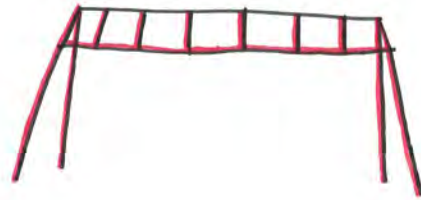
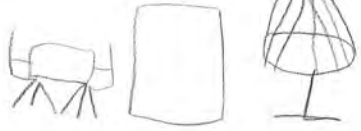
The proposed design takes into consideration the school playground elements and nearby parks.



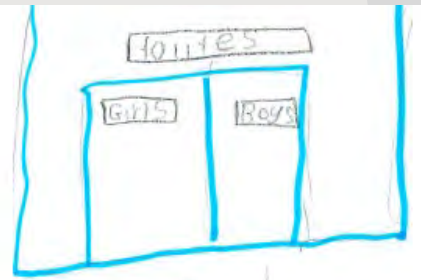
Ray

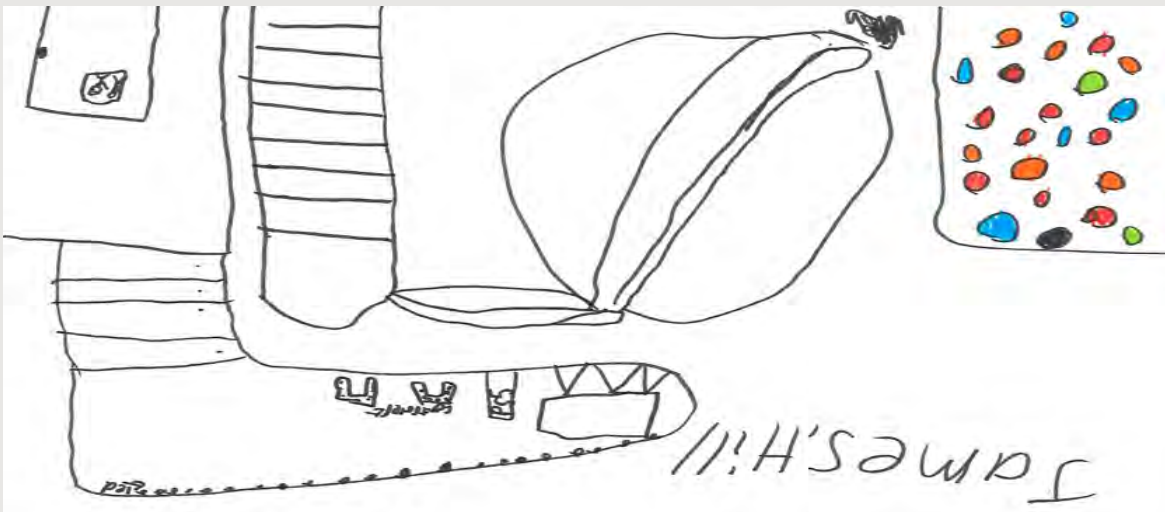


Katekyn

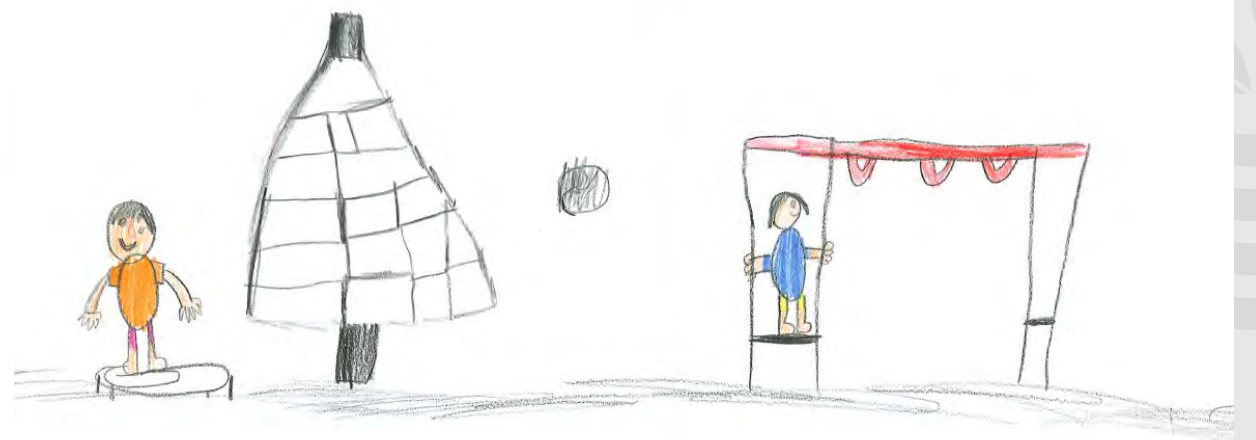


Sella of





JAMES.HILL



Whangaparaoa Primary student engagement participants showing their playground designs:

Local School Engagement



Intergenerational families live locally and consideration for how a variety of equipment could prove effective.





**Engagement
and
Consultation**

Other feedback:

- Intergenerational families live locally and consideration for how a variety of equipment could prove effective.
- Planting barriers to car parks
- Consideration of inclusive equipment



Proposed play equipment



CABIN TOWER WITH SMALL AND LARGE SLIDES



TIMBER SWINGS:
x1 belt, x1 baby



BASKET SWING
ACCESSIBLE
(existing)



TRAMPOLINES x2



BALANCE PODS



INCLUSIVE CAROUSEL ACCESSIBLE



CLIMBING / ROPE PLAY with timber posts

PROPOSED PLAY EXPERIENCES:



Swinging



Sliding



Climbing



Jumping



Balancing



Hanging



Spinning



Proposed concept design



N
SCALE 1:150
@ A3

LEGEND

- ① Proposed shade trees x2
- ② Proposed flush concrete edging
- ③ Woodchip safety surfacing
- ④ Wetpour safety surfacing - colours and patterns TBC
- ⑤ Timber swings with toddler and belt seat
- ⑥ 'Netscape' rope play climbing / overhead with timber posts
- ⑦ Cabin tower with spiral slide
- ⑧ Existing basket swing and shade sail retained as is
- ⑨ Accessible carousel
- ⑩ Trampoline
- ⑪ Stepping logs with coloured tops, creating loop trail between play items
- ⑫ Proposed buffer planting between play and carpark
- ⑬ Seat on concrete pad
- ⑭ Picnic on concrete pad



Approved funding allocation

Risk Adjusted Programme (RAP)

| Project ID | Activity Name | Financial Year 2023/24 | Financial Year 2024/25 | Total Funding |
|------------|--------------------------------------|------------------------|------------------------|---------------|
| #28182 | Edith Hopper Park – renew play space | \$129,058.46 | \$150,941.54 | \$280,000 |

The project and funding allocation has been approved in the current CAPEX work programme with resolution number FY24-HB/2023/100.

There are no further decision points anticipated. Staff are seeking feedback/ support of proposed concept design and proceed to next steps.



Next steps

**Procurement
of play
equipment**

April/ May 2024

**Finalise
detailed
design and
Tender
Package**

May 2024

**Procurement
of civil
contractor**

June/ July 2024

Construction

Commence October
2024



Any questions or feedback?

Thank you.





Cranston Street Reserve – renew play space

Hibiscus and Bays Local Board – 09/04/2024

Sandra May – Area Manager, Parks and Community Facilities



Purpose

- Present the Have Your Say (HYS) results.
- Proposed concept design.
- Seeking feedback and support of design.
- Outline next steps.



Cranston Street Reserve – renew play space – Current status



CURRENT PLAY EXPERIENCES:



Sliding



Rocking



Crawling

- A) Play module with slides, panels and tunnel.
- B) Raised timber edging.
- C) Springer recently installed.
- D) Extensive timber retaining side wall.

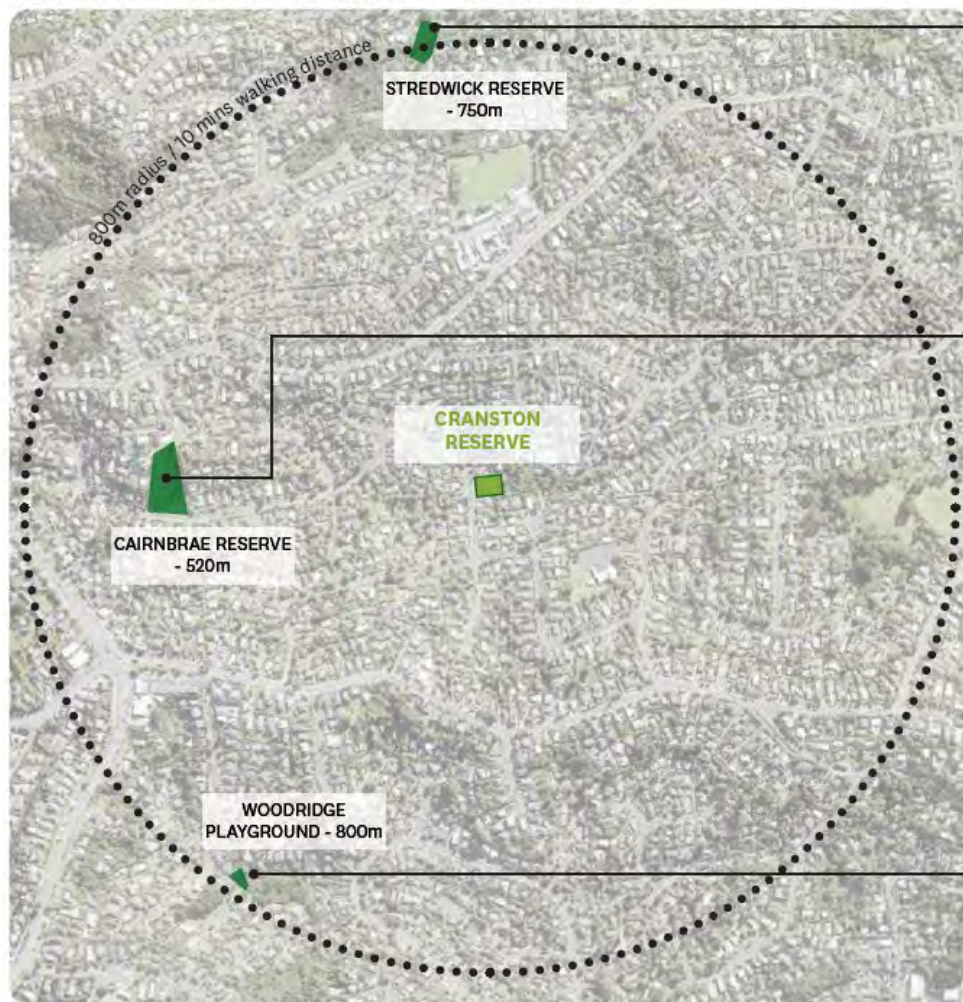


2

NEARBY PLAYGROUNDS

Cranston Reserve Playground Renewal | March 2024

PLAYGROUNDS WITHIN 800m RADIUS OF CRANSTON RESERVE:



STREDWICK PLAYGROUND

- Mixed Play
- Module with slide
 - Monkey bars



CAIRNBRAE RESERVE

- Mixed Play
- Module with slide and monkey bars
 - Swing set with basket
 - Springer
 - Junior slide



WOODRIDGE PLAYGROUND

- Mixed Play
- Swing set with basket
 - Climbing net
 - Nature play



Project background

- The renewal of a local neighborhood play space including equipment, drainage and edging.
- P&CF undertook condition grading audit of current assets identifying the need for renewal.
- 3 other playgrounds local to Cranston Street Reserve – Stredwick Reserve, Cairnbrae Reserve, and Woodridge Reserve.
- (Stredwick Reserve and Cairnbrae Reserve are part of the future CAPEX renewals programme.



Strategic assessment and alignment

- Strategic assessment was undertaken by P&CF to discover feasibility.
- The renewal of this play space has been identified as a specific area of opportunity to improve in the Strategic Parks Service Assessment for H and B.
- The HB LB Plan was considered with regard to people (consultation), environment (waterways and nature play), and communities (accessibility and inclusion).





**Engagement
and
Consultation**

Community engagement/consultation approach included:

- Have Your Say / Online consultation
- Letter drop
- Posters on site (park)



Engagement and Consultation

- Have Your Say: 27/09/23 - 30/10/23
- HYS online feedback: 28 people provided feedback.

Playground Renewal

AK
HAVE
YOUR
SAY

Cranston Reserve



The Cranston Reserve playground has come to the end of its life and it is time to renew the playground. We are looking for your feedback now!

Let us know what you would like to have included for whanau (families) and rangatahi (young people).

Have Your Say from 27th September to 20th October 2023

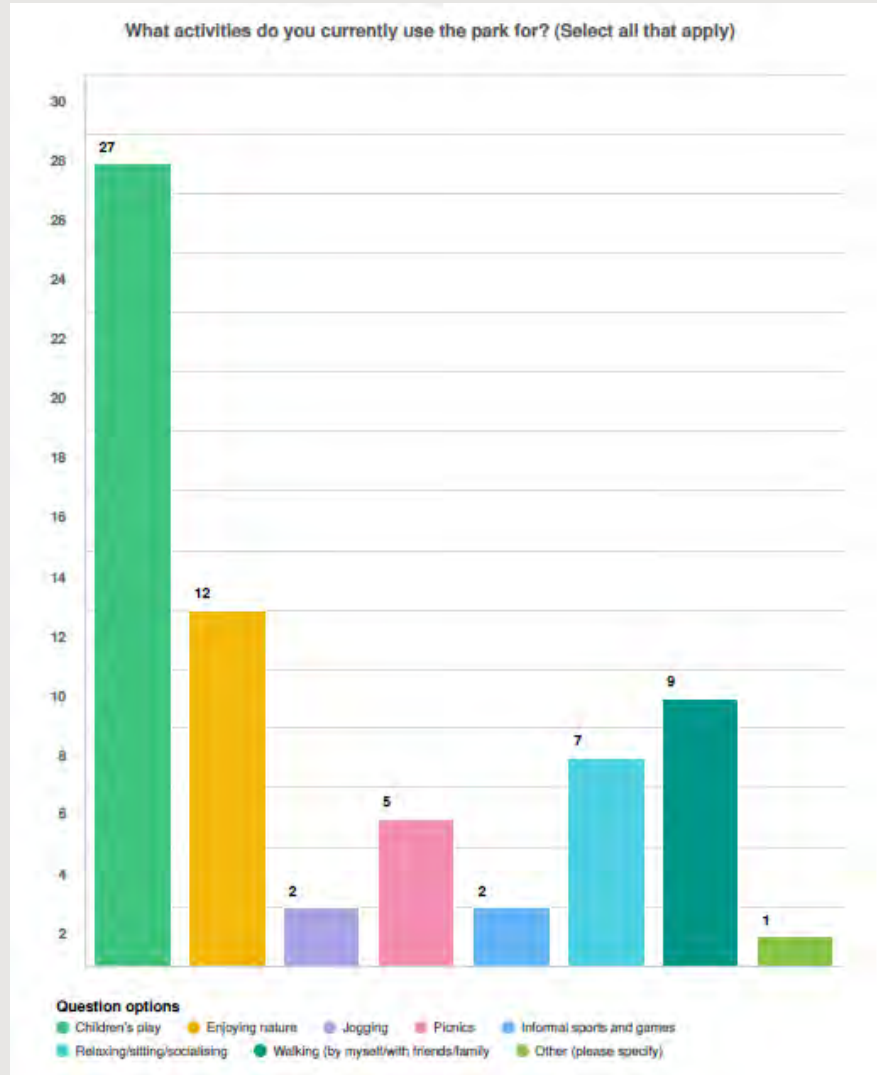
Give feedback online at [akhaveyoursay.nz](https://www.aucklandcouncil.govt.nz/akhaveyoursay) or email parksnorthfeedback@aucklandcouncil.govt.nz



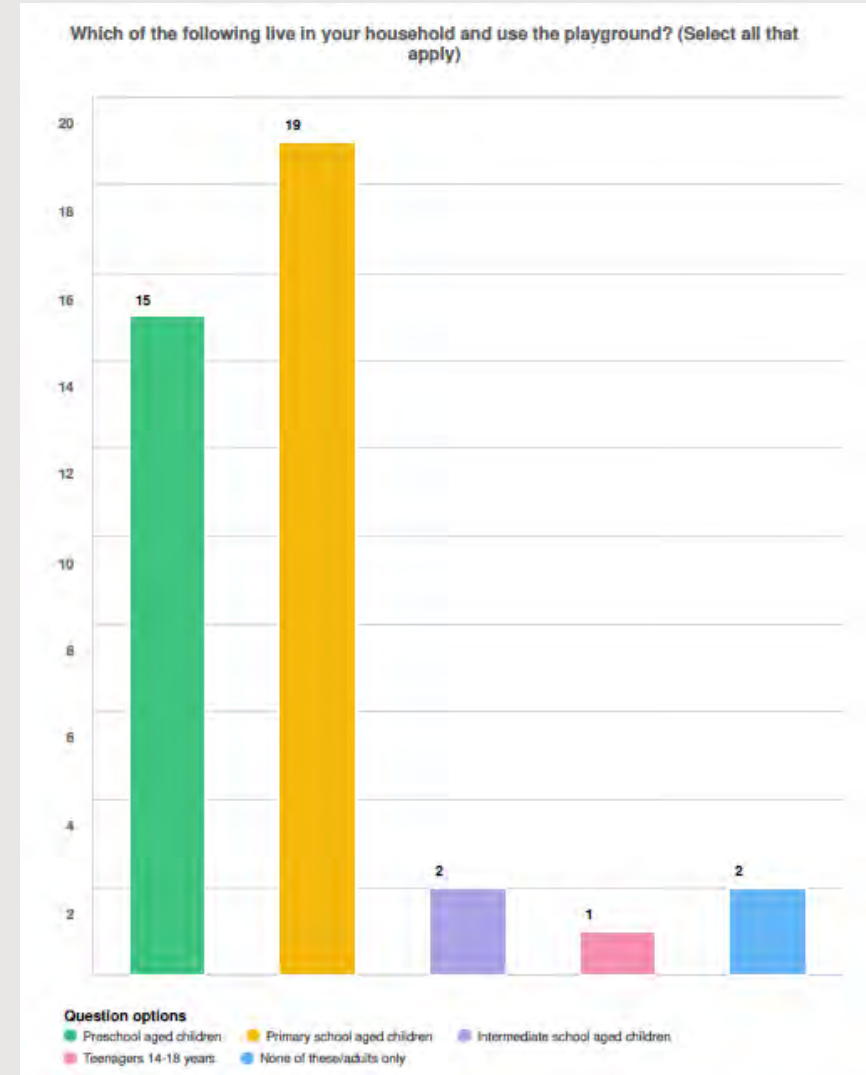
Engagement and Consultation - HYS results



Graph 1 – Main activity.



Graph 2 – Demographics.



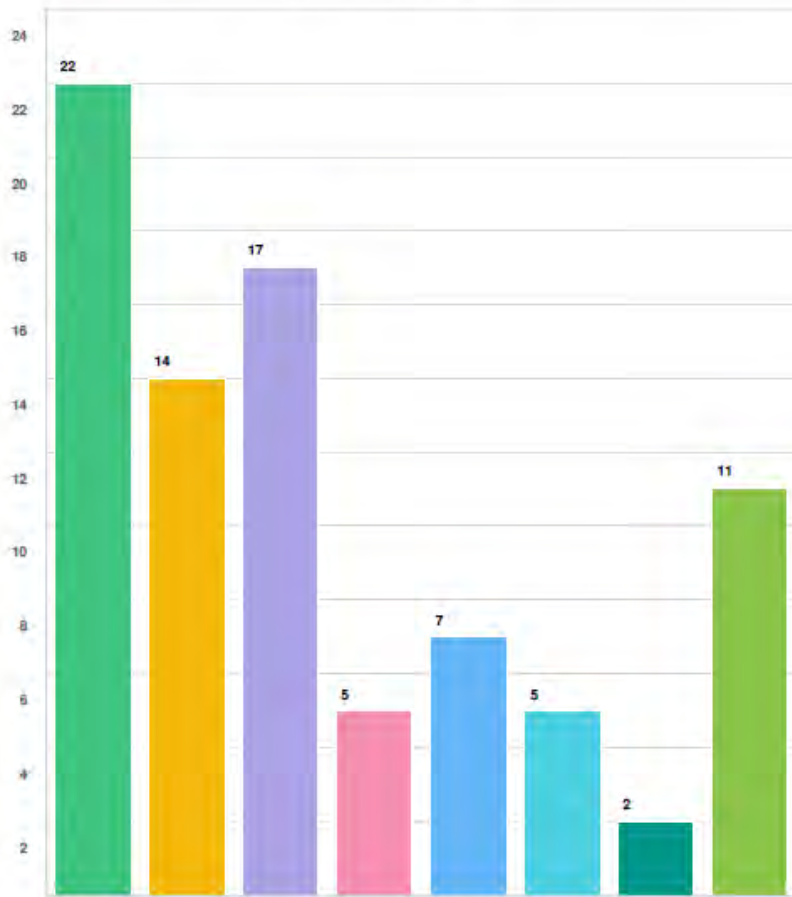
Engagement and Consultation - HYS results



Graph 3 – Desired equipment.



What activities would you like to see included in the Cranston Reserve playground?
(Choose your top three).



Question options

- Swinging
- Sliding
- Climbing / Overhead
- Spinning / Rocking
- Jumping
- Social Play
- Imaginative Play
- Nature Play

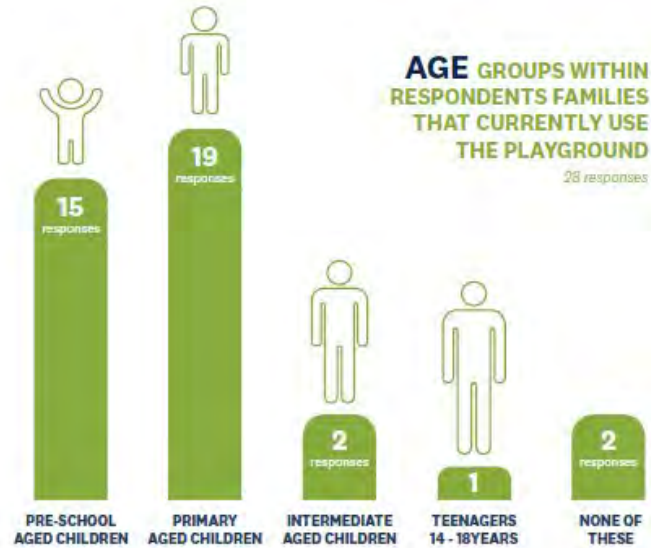


Engagement and Consultation - HYS Summary



The public survey was open for 5 weeks between 20th September 2023 and 30th October 2023. Approximately 28 people responded to the survey questions.

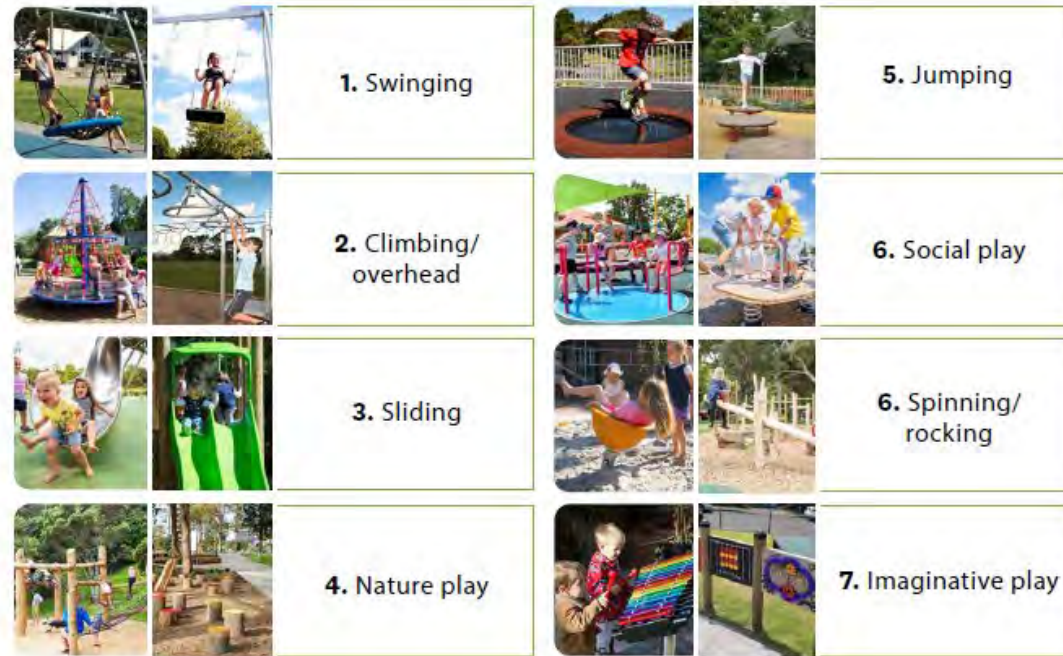
A summary is outlined below:



PLAY EXPERIENCES RESPONDENTS WOULD LIKE TO SEE INCLUDED IN THE NEW PLAYGROUND

(1 = MOST DESIRED, 8 = LEAST DESIRED):

26 responses





**Engagement
and
Consultation**

Other feedback:

- Hard surface access to the playground
- Bench seating
- Night lighting
 - Night lighting is not proposed as part of the renewal. Recreational use of the park and playground are daytime activities and night time activity in this space is not promoted.



Proposed play equipment



PLAYGROUND CENTRE - NATURE 902 MODULE



BASKET SWING

PROPOSED PLAY EXPERIENCES:



Swinging



Sliding



Climbing



Hanging



Balancing



Rocking



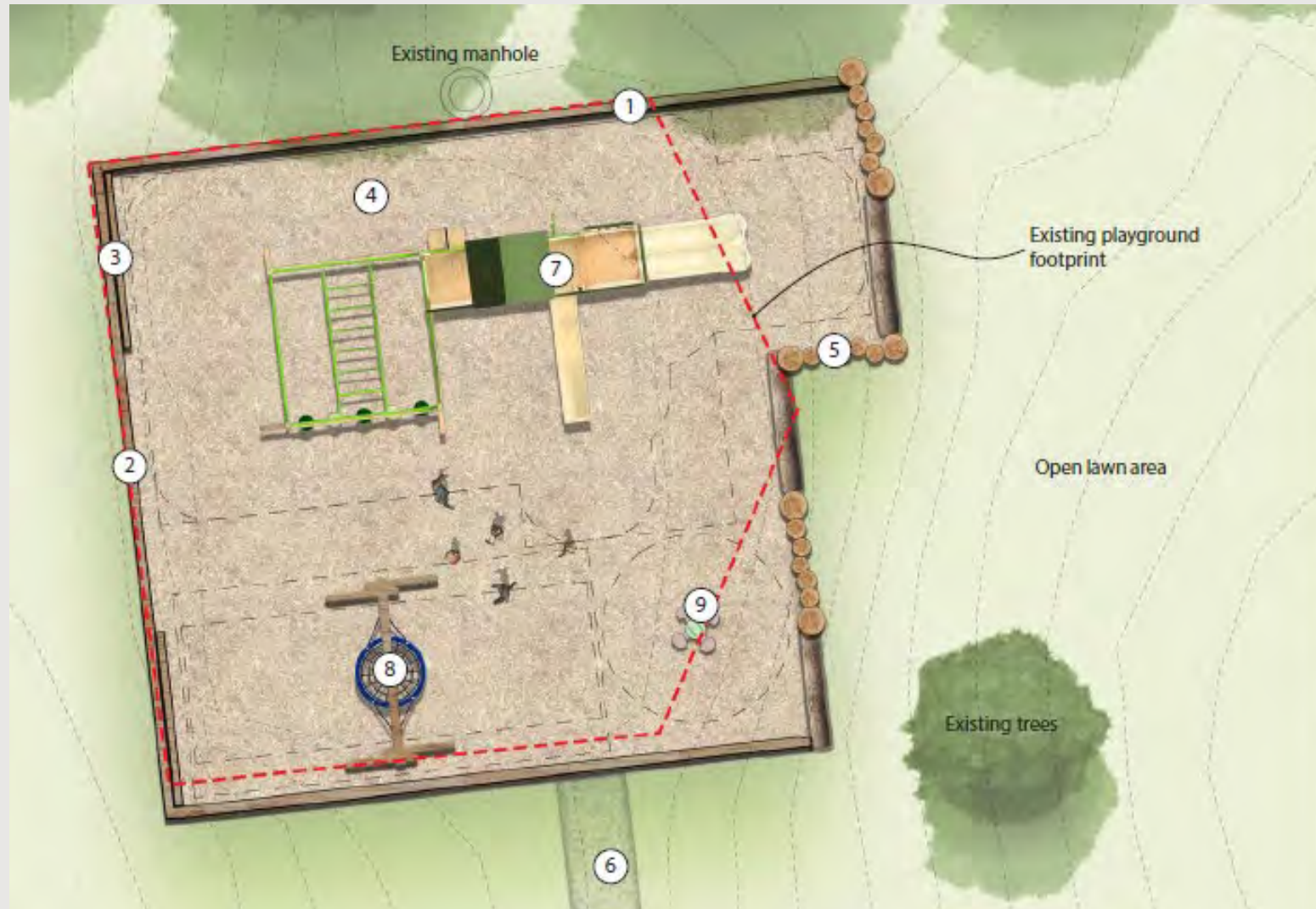
NATURE PLAY EDGING



SPRINGER (existing)



Proposed concept design



LEGEND

- ① Renewal of raised timber edging and improved drainage
- ② Renewal of timber retaining wall
- ③ Proposed seats built into wall
- ④ Woodchip safety surfacing
- ⑤ Nature play balance trail edging
- ⑥ Proposed gravel path, with small concrete ramp up into playground
- ⑦ 'Nature 902' play module with sliding, climbing, and hanging play
- ⑧ Basket swing
- ⑨ Relocation of the existing springer



Approved funding allocation

Risk Adjusted Programme (RAP)

| Project ID | Activity Name | Financial Year 2023/24 | Financial Year 2024/25 | Total Funding |
|------------|--|------------------------|------------------------|---------------|
| #18641 | Cranston Street Reserve – renew play space | \$13,000 | \$227,000 | \$240,000 |

The project and funding allocation has been approved in the current CAPEX work programme with resolution number FY24-HB/2023/100.

There are no further decision points anticipated. Staff is seeking feedback/ support of the proposed concept design and proceed to the next step.



Next steps

**Procurement
of play
equipment**

April/ May 2024

**Finalise detail
design &
tender package**

May 2024

**Procurement
of civil
contractor**

June/ July 2024

Construction

Commence October
2024



Any questions or feedback?

Thank you.





Restore Hibiscus & Bays

Ngahere Tupu Tonu • Thriving Nature

info@restorehb.org.nz

www.restorehb.org.nz

April 2024

Green Your Stream

Hibiscus and Bays Storm Recovery and Resilience Project

What we were asked to do:

Run a pilot programme with a storm resilience focus to engage with local residents (private landowners) to improve resilience to high rainfall events.

Two main focus areas:

Private stream owners

- Most impacted by high flow events both past and future.
- Naturally more inclined to look after the stream on their property.
- Large percentage of our LB streams are on private urban land.
- Poor urban planning leading to housing being built very close to streams

Orewa Marae

- The Marae is the natural kaitiaki of the Weiti River at this point.
- The Weiti is an area of focus for the LB with Weiti Wild Link.
- River is heavily silted from development and previous high flow events.
- Massive landuse changes in the area impacting the flow of the river
- Major stream blockage in front of the Marae – the Wakatu.

Green Your Stream

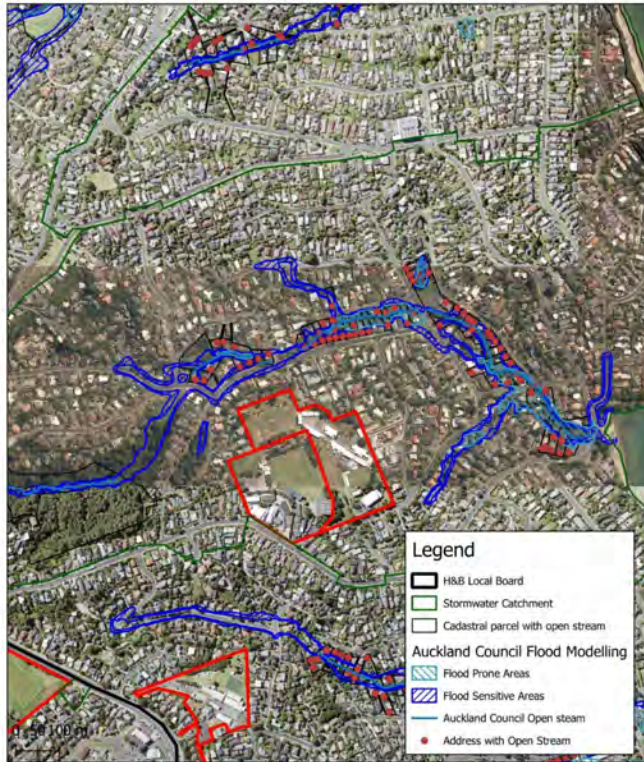
- Provide homeowners with knowledge and support to clear pest plants from the riparian area on their property and replant in appropriate native plants.
- Aligns with the Auckland Council initiative to build resilience for future flood events by finding natural solutions to make room for water and encouraging locals to be guardians of their streams.
- **RHB provides:**
 - A pest plant control plan, garden tools and herbicides, garden bags, planting plan and plants.
- **Homeowner provides:**
 - Manpower to clear, replant and maintain the riparian area on their site.

Green Your Stream aims:

- Bring those most impacted by extreme weather events together to undertake meaningful work that will benefit themselves and those downstream.
- Decreased sedimentation downstream (such as Taiāotea) and in the Hauraki Gulf receiving environment.
- Create a natural buffer to the sides of the stream.
- Slow the water passage through the catchment, decreasing pressure on hard bottlenecks in the stormwater system – i.e. piped stream sections and culverts.
- Increase water absorption by improving soil conditions and infiltration.

Green Your Stream – A targeted approach/How it was done;

- GIS used to isolate all H&B properties with an open stream on their property
- LINZ address data overlaid to find all addresses, then separated into catchments.
- Catchments targeted based on number of emergency call outs in the cyclone.
- Door knocked targeted sites to provide information and introduce the project.



GIS work in Murrays Bay to target privately owned stream sites (example)

Auckland Flooding: How hard was your suburb hit?

Zoom in and explore the map and see rainfall, river, FENZ, and property inspection data.



Help needed from Fire and Emergency in Torbay

- 13 calls were made to FENZ about flood-related incidents in Torbay.
- 1 of these calls resulted in FENZ rescue operations.

Auckland Flooding: How hard was your suburb hit?

Zoom in and explore the map and see rainfall, river, FENZ, and property inspection data.



Help needed from Fire and Emergency in Browns Bay

- 33 calls were made to FENZ about flood-related incidents in Browns Bay.
- 3 of these calls resulted in FENZ rescue operations.
- 1 additional calls required an urgent response from Fire and Emergency personal.

Example FENZ callout data by station during 2023 extreme weather events – all data available



Example site photos

April 2024



Example site photos

Green Your Stream cost allocation

- The community is overwhelmed with electronic information.
- A personal approach we felt would show the community that their council and local board cared about them, rather than just a targeted marketing campaign.
- This has high start up costs but hopefully a better long-term result with a larger area of stream restored.
- As seen with the Resilience Groups, it can take a while to begin.
- As properties come on board, costs will begin to be shift away from staff to site preparation and planting costs.
- Operational expenditure:
 - Herbicides
 - Gardening tools
 - Weed bags
 - PLANTS – largest cost, yet to kick in until planting season.

Results and public response

- **1500** locations identified (not all private land)
- Catchments targeted – Awaruku/Long Bay, Taiaotea and Murrays bay
- **200** sites visited to assess viability, offer advice on stream care and Green Your Stream services.
- Currently **63** landowners signed up to the project – While this does not guarantee they will proceed to the planting stage, they may still adopt some of the stream care guidelines shared with them.
- The project has sparked a very positive response from community – neighbours working together or at adjacent sites.
- Many calls from any communications left in letterboxes.
- Engagement stopped due to budget constraints.

Other benefits/outcomes:

- Collaborations with residents' associations and the Orewa Marae have raised awareness about stream restoration and community involvement in projects. The Marae is very keen to have the Wakatu removed from their river now and is applying for a local board grant to remove it.
- Sparking discussions among neighbours about the state of urban streams as part of the stormwater drainage network.
- Neighbourhood discussion about collaborating on property work and supporting those who are unable to do the work themselves indicate a strong potential for continued community support of each other (resilience).
- Long term increase in ecosystem health and biodiversity increases the resilience of the community to storm events.

Orewa Marae projects

- Weed clearance
- Riparian planting
- Need to remove the Wakatu before investing time and money in the riparian areas as this will be damaged in the removal. The Weiti is now so silted the boat will have to be removed from the shore as the stream is no longer navigable.
- The Wakatu blocks around a third of the river and which a significant part of the stormwater network at this point.
- RHB chose to try to crowdfund this project as a vector to draw local attention to the plight of the river.
- The Weiti could be a beautiful public amenity space....



The Awataha Stream, previously buried in a stormwater pipe, will be a key feature of the community.

Land use change in the Weiti catchment increasing sedimentation – approx. 16 years



2001



2017
(latest aerials)



**WEITI RIVER RESTORATION PROJECT -
HELP US REMOVE THE ABANDONED WAKATU**

The Weiti River is not just a body of water, it's an integral part of the Silverdale community.

The Wakatu, once a proud vessel, has been abandoned, left to decay, obstruct and leak harmful pollutants into the river. It also poses a serious threat, blocking the river's flow which puts the local communities at risk of flooding.

Help us remove this rusty vessel from the Weiti River and it turn preserve the natural beauty of the environment, protect the wildlife that call it home, and ensure a cleaner, healthier future for generations to come.

**WE NEED YOUR HELP TO RAISE \$10,000 FOR THIS
CRUCIAL ENVIRONMENTAL PROJECT**

DONATE NOW
[GIVEALITTLE.CO.NZ/CAUSE/
/WEITI-RIVER-
RESTORATION-PROJECT-
WAKATU](https://GIVEALITTLE.CO.NZ/CAUSE/WEITI-RIVER-RESTORATION-PROJECT-WAKATU)

Restore Hibiscus & Bays

Promotional work for the Weiti Restoration and Wakatu Removal



Restore Hibiscus & Bays

Ngahere Tupu Tonu • Thriving Nature

info@restorehb.org.nz

www.restorehb.org.nz

Work Programme ID 4004 – Hibiscus and Bays Storm Recovery and Resilience

| Work Programme Name | ID | Activity Name | Activity Description | Lead Dept/Unit or CCO | LB Plan Outcome | Budget Source | Year 1 | Activity Status | RAG Status | Q2 Commentary |
|--|------|---|--|-----------------------|---------------------------------|---------------|------------|-----------------|------------|--|
| Infrastructure and Environment of Services | 4004 | Hibiscus and Bays Storm Recovery and Resilience | <p>This project will fund Restore Hibiscus and Bays to undertake work to restore streams and overland flow paths in the area after the Anniversary Weekend floods in 2023 and to work collaboratively with private landowners.</p> <p>This will include removing debris from the streams, helping private landowners to understand their responsibilities to streams on their property - including removing items that may restrict overland flows.</p> <p>Restore Hibiscus and Bays will undertake riparian planting. Riparian planting reduces the impacts of floods by stabilizing riverbanks, absorbing floodwaters, filtering sediments and pollutants, retaining and slowly releasing floodwaters, providing habitat for wildlife, offering recreational benefits, and contributing to climate change mitigation. This practice is an important component of integrated flood management strategies and watershed protection efforts.</p> <p>The programme will aim to provide education to the community about tsunami risks and the potential drought.</p> | i&ES: Healthy Waters | 2020HB1 - A connected community | LDI: Opex | \$ 100,000 | In progress | Green | The scoping phase of the project has been completed, and after members' approval, a key addition was made targeting private owners. Meetings with the manager of Restore Hibiscus and Bays have occurred to discuss project implementation. Identified areas for the project include Awaruku, Deep Creek Stream, Vaughans Stream, Otanerau, Nukumea Stream, Whangaparaoa College Wetland, Campbells, Bay Stream, and Taiaotea Stream. Project activities encompass community stream walks, fostering resident discussions, community stream clean ups and planting, storm resilience education, and enhancing community spirit during and after storms. Wetlands (Mangrove Esplanade Reserve, Longmead Reserve, Awaruku Wetlands, Okoromal Clansman Reserve) are crucial targets to enhance catchment water management. Funds are allocated for Te Herenga Waka o Orewa Marae to support these events, ensuring a comprehensive approach to community engagement and storm impact reduction. |

Hibiscus and Bays Local Board Grants Programme 2024/2025

Vincent Marshall

Grants Advisor

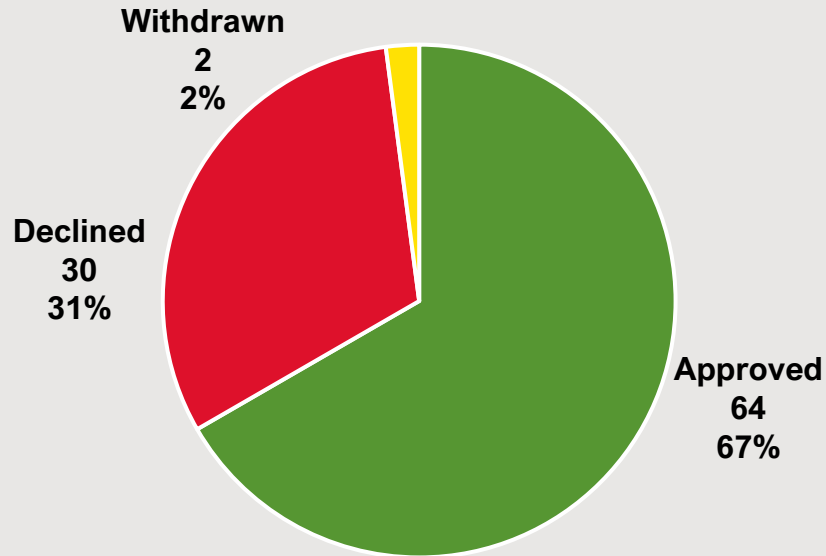


Snapshot of 2021/2022 and 2022/2023 Contestable Grants



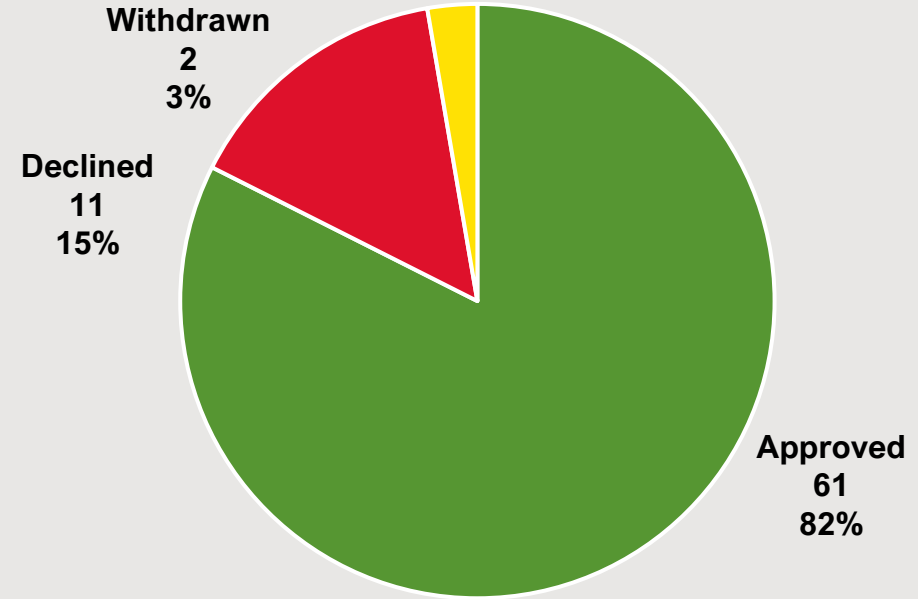
Grant application outcomes: 2021/22 vs 2022/23

2021/2022 application outcomes



■ Approved ■ Declined ■ Withdrawn

2022/2023 application outcomes

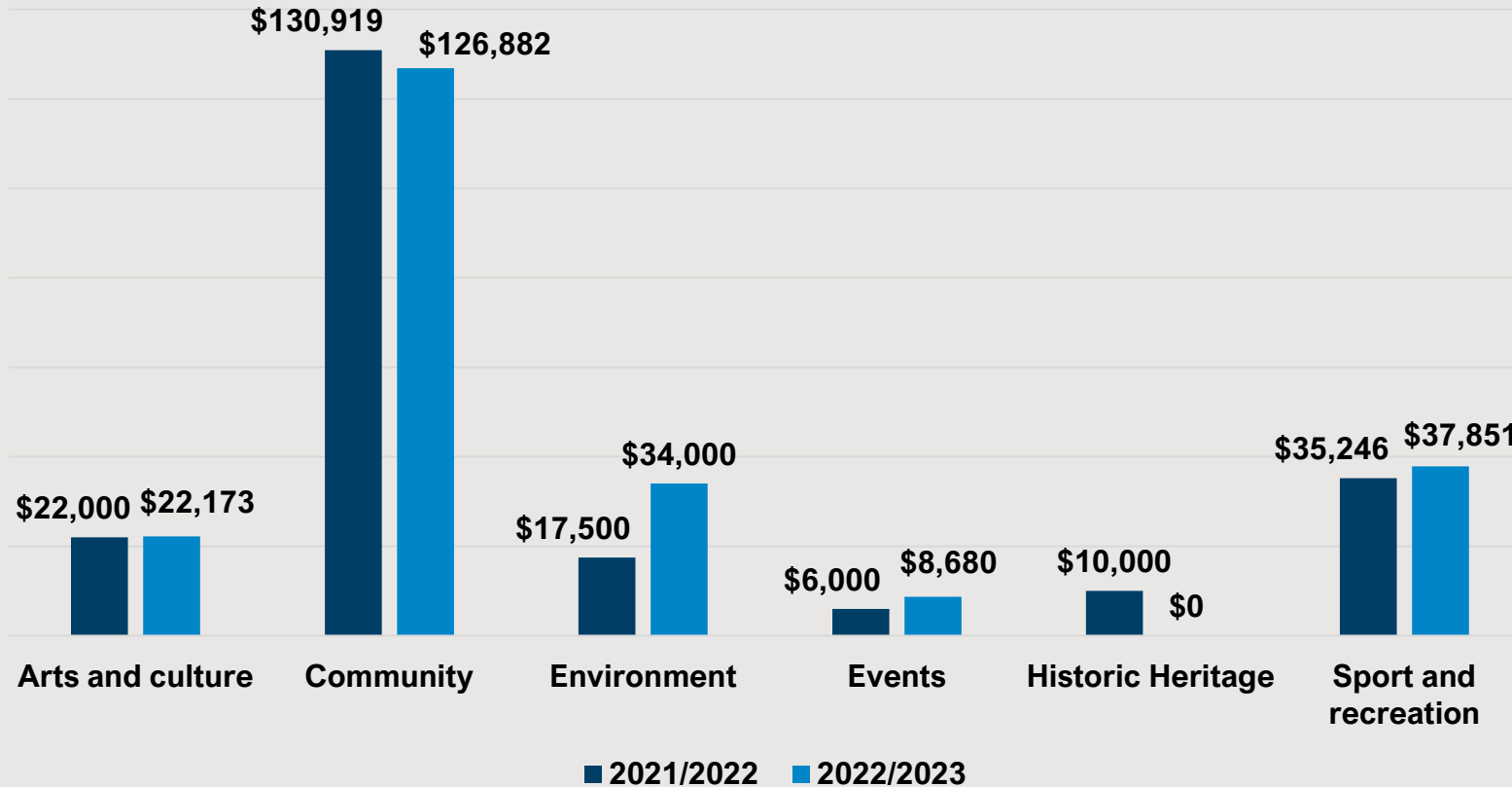


■ Approved ■ Declined ■ Withdrawn

- **96** applications in 21/22 vs **74** applications in 22/23
- **23%** decrease in application volume in 22/23 FY
- **15%** increase in approval rate in 22/23 FY



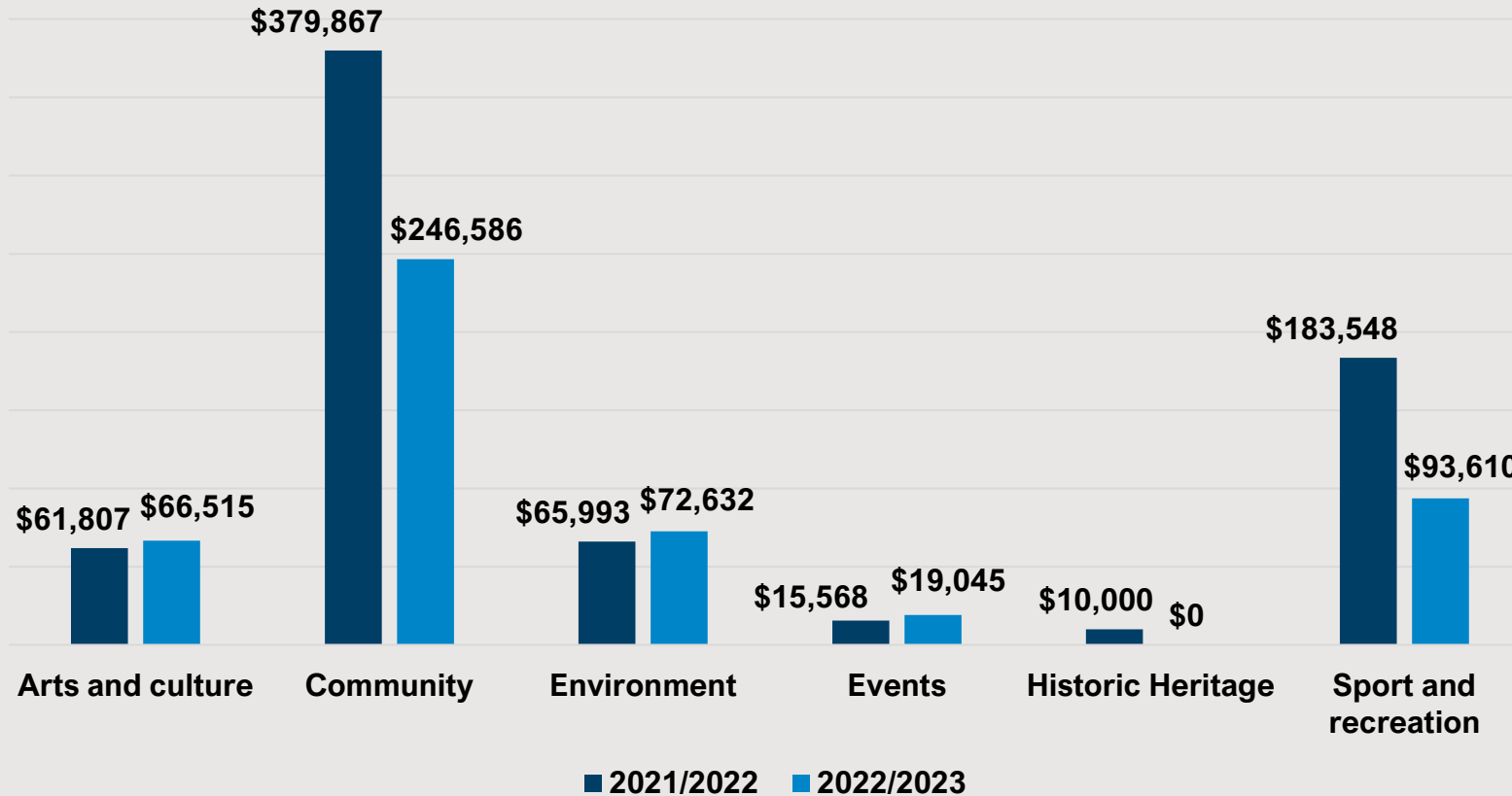
Grants spending by project focus FY 21/22 vs FY 22/23



- Total spending of \$229,586 in 22/23 FY, **4%** increase from \$221,666 in 21/22 FY
- No historic heritage applications made or approved in 22/23



Grants requests by project focus FY 21/22 vs FY 22/23



- Total request of \$498,388 in 22/23 FY, **30%** decrease from \$716,784 in 21/22 FY
- **35%** decrease in requests towards community projects in 22/23 FY
- **49%** decrease in sport and recreation projects in 22/23 FY



Examples of Hibiscus and Bays Local Board Grants FY2022/2023 (type of projects and excluding facilities grants)

| Application ID | Organisation | Project | Allocated |
|----------------|---|---|-------------|
| LG2306-233 | Hibiscus Coast Community Patrol Charitable Trust | Cameras for Orewa | \$10,000.00 |
| LG2306-119 | The Browns Bay Business Association Incorporated | Summer Spectacular | \$10,000.00 |
| LG2306-231 | Whangaparaoa Community Patrol | Cameras for Whangaparaoa Peninsula | \$10,000.00 |
| LG2306-131 | Sir Peter Blade Marine Education and Recreation Centre Board | Security system for MERC | \$9,889.39 |
| LG2306-115 | Friends of Okura Bush Incorporated Society | Weed Control at Okura Esplanade, Deborah Reserve and Okura Walkway | \$8,000.00 |
| LG2306-107 | The Scout Association of New Zealand | Outdoor and safety equipment | \$8,000.00 |
| LG2306-206 | Youth in Transition Charitable Trust | Supporting youth at high risk of suicide | \$8,000.00 |
| LG2306-238 | Mairangi Bay Playcentre | MBPC Nature Trail Revitalisation | \$6,000.00 |
| LG2306-117 | Mountains to Sea Conservation trust - Experiencing Marine Reserve | Summer Series | \$6,000.00 |
| LG2306-120 | Auckland King Tides Initiative | Auckland King Tides Initiative Community CoastSnap Beach Monitoring | \$5,000.00 |



Review and refine 2024/2025 Grants Programme

- Outcomes and priorities
- Exclusions and declined reasons
- Facilities Grant
- Rates Grant
- Multi-board Grants
- Proposed dates



Local board plan 2023 - Outcomes



OUR COMMUNITY VOICE IS HEARD, AND ALL FEEL WELCOMED. OUR RESILIENCE. NETWORKS ENABLE US TO BE PREPARED FOR EMERGENCIES, WHILE OUR YOUTH THRIVE.



NATIVE BIRDS, PLANTS AND ANIMALS THRIVE IN AN ENVIRONMENT WHERE PESTS ARE ELIMINATED. WE HAVE PLANNED AND DESIGNED OUR COASTLINES TO BE RESILIENT TO STORMS AND THE EFFECTS OF CLIMATE CHANGE, OUR WATERWAYS ARE CLEAN, AND WE MINIMISE WASTE AS WE MOVE TO A CIRCULAR ECONOMY.



IN A WORD, VIBRANT. OUR PAST IS REMEMBERED, AND OUR FACILITIES CATER FOR FUTURE NEEDS. OUR OPEN SPACES CAN BE USED BY ALL, AND WE HAVE AN ABUNDANCE OF RECREATION FACILITIES.



OUR TOWN CENTRES ARE LIVELY AND FULL OF INTEREST, WITH A NETWORK OF PATHS AND CYCLEWAYS THAT ARE AS EQUALLY CONNECTED AS OUR CURRENT ROADING NETWORK, ALL SERVING TO CREATE A SAFE, BUSY, AND PLEASANT NEIGHBOURHOODS



Local board priorities under each outcome

OUR PEOPLE // OUR COMMUNITY VOICE IS HEARD, AND ALL FEEL WELCOMED. OUR RESILIENCE NETWORKS ENABLE US TO BE PREPARED FOR EMERGENCIES, WHILE OUR YOUTH THRIVE.

- Objective: Hibiscus and Bays: a community of thousands that feels like a village, with strong connections and roots, but easy opportunities for participation

OUR ENVIRONMENT // NATIVE BIRDS, PLANTS AND ANIMALS THRIVE IN AN ENVIRONMENT WHERE PESTS ARE ELIMINATED. WE HAVE PLANNED AND DESIGNED OUR COASTLINES TO BE RESILIENT TO STORMS AND THE EFFECTS OF CLIMATE CHANGE, OUR WATERWAYS ARE CLEAN, AND WE MINIMISE WASTE AS WE MOVE TO A CIRCULAR ECONOMY

- Objective: Hibiscus and Bays: where native birds and plants flourish, and the water is pure and clean through education, advocacy and restoration work
- Objective: Supporting our communities by planning and engagement on how to mitigate and manage risks from climate change

OUR COMMUNITY // IN A WORD, VIBRANT. OUR PAST IS REMEMBERED, AND OUR FACILITIES CATER FOR FUTURE NEEDS. OUR OPEN SPACES CAN BE USED BY ALL, AND WE HAVE AN ABUNDANCE OF RECREATION FACILITIES

- Objective: Every corner of the hibiscus and bays has a past that we remember through the names given to places and the stories shared
- Objective: There is nowhere better than our local parks and reserves for a picnic, a sports game or meeting friends
- Objective: We have more opportunities for recreation in our community than ever before
- Objective: A vibrant and thriving community with places to celebrate, learn and enjoy culture and arts



Local board priorities under each outcome - continued

OUR PLACES AND OUR ECONOMY // OUR TOWN CENTRES ARE LIVELY AND FULL OF INTEREST, WITH A NETWORK OF PATHS AND CYCLEWAYS THAT ARE AS EQUALLY CONNECTED AS OUR CURRENT ROADING NETWORK, ALL SERVING TO CREATE A SAFE, BUSY, AND PLEASANT NEIGHBOURHOODS. HIBISCUS AND BAYS: A COMMUNITY OF THOUSANDS THAT FEELS LIKE A VILLAGE, WITH STRONG CONNECTIONS AND ROOTS, BUT EASY OPPORTUNITIES FOR PARTICIPATION

- Objective: Town centres feel like a friendly village but operate like a bustling metropolis
- Objective: Getting around without a car is attractive because of the seamless and safe network of paths and public transport
- Objective: People embrace and enjoy living, working, playing, and travelling locally



Important advice for applicants

The Hibiscus and Bays Local Board are seeking applications in the **2023/2024** financial year which show a clear commitment to one or more of the following objectives:

- Strengthens business resilience and economic benefits
- Produces local benefits, caters for local participation and increased visitors to the area
- Show collaboration, the pooling of resources and benefits to multiple community groups and audiences
- Encourages and fosters increased resilience, connectedness and wellbeing in our communities and environment.

In 2024/2025 the advice for applicants will be based on your Local Board Agreement priorities (draft below).

- support the development of community led resilience
- support and advocate for further protection of our sea, soil and fresh water from contamination and sedimentation
- Support activities that promote vibrancy, diversity and showcases creativity in our area, such as events, festivals, and other shared experiences in our public spaces for all
- continue to renew and enhance the paths network (greenways) to create a safer, off road, well connected networks for active modes of transport



Other important factors for a successful application

The Hibiscus and Bays Local Board will also take into account whether the applicant:

- has considered other sources of funding for their event/project/activity
- is making a contribution to the event/project/activity (financial, volunteer time etc.)
- has identified collaboration and working with other groups to deliver an event/project/activity and is seeking funding collaboratively
- is utilising and supporting volunteer groups through the delivery of an event/project/activity
- will get the community involved early on, by working collaboratively and creating opportunities to meet new people and share experiences



Exclusions – any changes?

The Hibiscus and Bays Local Board will not consider grants for financial assistance for:

- Applicants who have had one successful grant of any type of application within the current financial year from the Hibiscus and Bays Local Board unless there is mitigating circumstances (which need to be explained in the application)
- Administrative costs that are ongoing, such as salaries, debt servicing, legal expenses, medical expenses, or a commitment to ongoing funding or financial support
- Churches and Educational Institutions, except where these groups can demonstrate the wider community benefit
- Activities whose purpose serves to promote religious, political or contentious messages
- Activities that do not relate to one or more of the local board plan initiatives
- Activities or projects where the funding responsibility lies with another organisation or central government
- Prizes for sports and other events (except trophies)
- Commercial business enterprises and educational institutions in accordance with the Council's Community Grants Policy (Scope and Eligibility, Page 20)
- Applications to fund projects, programmes or facilities run by Auckland Council or its employees

See next page



Exclusions – any changes?

The Hibiscus and Bays Local Board will not consider grants for financial assistance for:

- Auckland Council CCO's or organisations who receive funding from the Auckland Regional Amenities Fund
- Applications for activities, events or projects outside of the local board area*
- Applications to subsidise rentals, reduce debt, or payment of rates unless it is a transitional Rate grant
- Applications for the purchase or subsidy of alcohol or costs associated with staging after-match functions
- Grants for the sole purpose of an individual
- Facilities grants where the project stage has already been funded



Decline Reasons

- **Does not align with local board priorities:** There is a low alignment with the local board's priorities and/or community outcome(s)
- **Grant round oversubscribed:** Limited funding
- **Central government funding role/ Other funding sources available**
- **Application insufficiently developed:** The project not fully defined or developed, applicant may be invited to submit an application to a future grant round
- **Limited community benefit(s):** Insufficient evidence of specific benefits to the community
- **Project outside of local board area:** Project not benefiting local board area
- **Not eligible:** Applicant or project not eligible under the terms of the Community Grants Policy 2014 or the local board grants programme



Facilities Grant – any changes?

The Facilities Grant provides funding to assist with the costs of planning or developing a facility with the Hibiscus and Bays Local Board area. This can include:

- Needs assessments
- Feasibility studies
- Investigation and design
- Small building works or minor capital work



Multi-board grants - overview

- Lower quality applications, resulting in **19.7%** approval rate vs **81%** for other grants
- Applicant spending in accountability reports is difficult to assess, with funding conditions, and each board having different exclusions
- Higher frequency of lower priority items and requests
- Unclear timelines for applicants
- Delays in paying applicants, as a decision is needed by every board applied to before funding is paid
- More room for error when gathering Multi-board data



Proposed grant round dates 2024/2025

| Local Grants | | | | |
|--------------------------|--------------|------------------|----------------------|--------------------------------|
| Grant round | Opens | Closes | Decision made | Projects to occur after |
| Round One | 29 July 2024 | 6 September 2024 | 22 October 2024 | 1 November 2024 |
| Round Two | 3 March 2025 | 11 April 2025 | 27 May 2025 | 1 June 2025 |
| Facilities Grants | | | | |
| Grant round | Opens | Closes | Decision made | Projects to occur after |
| Round One | 3 March 2025 | 11 April 2025 | 27 May 2025 | 1 June 2025 |



Thank You

