



Kaipātiki Project

share in nature's revival



Manaakitanga Kaipātiki

Presentation to Kaipātiki Local Board

He aronga poto i tā mātou mahere

Our plan at a glance

We will focus on five outcomes to guide our work and make Kaipātiki a better community for all. Our aspirations are outlined below.



Birkenhead Library.

Outcome 1: Te whai wāhitanga me te oranga | Belonging and wellbeing

Our people are involved in the community, socially connected to one another, and supported to be active, creative, resilient and healthy.



Beach Haven Ferry Terminal.

Outcome 4: Te Ikiiki me ngā tūhononga | Transport and connections

Our people have many transport options and can easily and safely move around and find their way.



Le Roys Bush Reserve, Birkenhead.

Outcome 2: Te taiao | Environment

Our natural environment is protected and restored for future generations to enjoy.



Aerial view up Birkdale Road, Birkdale.

Outcome 5: Te āheinga me te taurikura | Opportunity and prosperity

Our people can buy local, live local and work local.



Shepherds Park, Beach Haven.

Outcome 3: Ngā wāhi me ngā takiwā | Places and spaces

Our built environment is high quality, vibrant, well-maintained, reflects the culture and heritage of Kaipātiki, and meets our people's needs.





Manaakitanga Kaipātiki 2020/21: Growing cultural capability

Context

- KP relationships with mana whenua were ad hoc
- Past involvement had been at an individual tribe level on individual programme/ project level
- Key relationship was with Chair Charmaine Bailie
- Te Ara Awataha provided a greater knowledge of a collaborative approach
- KP wished to be proactive in working with mana whenua on a wider and ongoing basis eg involving mana whenua in programme design should they so wish
- KP also wanted to be clear about who to consult
- As a practical, grassroots organisation, we needed a practical, long-term solution that was fit-for-purpose, and was at the operational or kaitiaki level.
- There was a need to consider Te Tiriti o Waitangi and at a strategic level that fitted our role and purpose.
- There was a need to ensure staff were well informed and engaged, requiring some upskilling.





Expert advice



- With support of Strategic Broker, contracted advice of Tui Gilling – Matapapa Consulting
- Good fit, with an interest in sustainable living
- Huge experience working with iwi and in Te Ao Māori



Kaipātiki Project
share in nature's revival



Proposal

Context

- Meeting with KP Board to ensure whole of organisation buy-in
- Treaty of Waitangi training for Manager
- Mana whenua engagement advice delivered through coaching sessions
- Plan of external and internal actions to build, engage and maintain relationships with mana whenua
- Identify priorities for growing cultural intelligence in the organisation eg in events



Kaipātiki Project

share in nature's revival



Training & Coaching

Modules

1. Te Ao Māori, Tiriti o Waitangi, Mana whenua o Tāmaki Makaurau
2. Mana whenua engagement
3. Waitangi Tribunal interpretation of the Treaty principles



Kaipātiki Project

share in nature's revival



Māori Responsiveness Plan

The programme is grouped into the themes of:

- Cultural capability
- Māori values
- Iwi engagement and relationships
- Programmes
- Policy
- Events
- Partnerships
- KPIs



Kaipātiki Project

share in nature's revival



What has happened because of this project?

- Engagement with mana whenua:
 - Capability & confidence to engage further around Te Ara Awataha and help realise the potential of Take Mauri Take Hono
 - 17 Lauderdale nursery relocation & dawn blessing
 - Eskdale Reserve regeneration plan
 - Eskdale track opening
 - Kaipātiki and Ōruamo projects – Tītiwai (glow worms) and Kākahi (FW mussels)
 - Food resilience research and Mara kai
 - Started research around history of first settlement around our waterways as part of Streamcare, and co-design signage
- Engagement with mataawaka Māori
 - Food resilience research and Mara kai
 - Streamcare research and signage





Next steps

- Next stage of Te Reo & Tikanga Māori classes for staff, volunteers and partners eg PFK
- Treaty training across whole organisation
- Consider further work to ensure organisation welcoming place for Māori Board, staff, volunteers, visitors and partners – a place that creates space for Māori voices and leadership
- More intentional implementation eg reflecting Māori values in planning, programme design and communications
- Support KP Board and governance development
- Embed learnings in practice, policy and resource priorities
- Share learnings with partners

*NEWSFLASH: Newest staff member Waiata Rameka-Tupe
Kaiawhina o Rongo - Food Garden practitioner*



Kaipātiki Project
share in nature's revival



Kaipātiki Project

share in nature's revival



Thankyou Kaipātiki Local Board

For your support 2020/21

Look at what we're achieving together!

Para Kore Zero Waste Northcote update



Kaipātiki Project
share in nature's revival

**Kaipātiki
Local Board**

**Eke Panuku
Development
Auckland**

**Auckland
Council**
Te Kaunihera o Tamaki Makaurau



Kāinga Ora
Homes and Communities

Pare Kore Zero Waste Northcote

- 2018** Take Mauri Take Hono identifies Para kore as key health indicator for Northcote
- Jul 2019** Eke Panuku seed funding towards development of Action Plan
- Feb 2020** First hui with iwi and partners
- Jun 2020** Kaipātiki Local Board funding to support project
- Jul 2020** Follow up hui with iwi and partners – finalise Action Plan + priorities
- Dec 2020** Recruitment of Para Kore Zero Waste activator – Robyn Forryan

WMIF funding for food waste business support
- Mar 2021** Funding from Eke Panuku, Local Board and Waste Solutions
- April 2021** Kainga Ora support for community engagement through schools activation
- Jun 2021** Zero Waste Hub Northcote opens – 47 Pearn Place

Key contributors and project partners

- Mana Whenua Forum (via Eke Panuku)
- Kaipātiki Local Board
- Auckland Council — Waste Solutions, Eke Panuku, Connected Communities, Sustainable Schools, Parks and Community Services
- Community environmental action — Kaipātiki Project
- Community development - Kaipātiki Community Facilities Trust, St Luke's Methodist Church
- Homes - Kāinga Ora, Piritahi
- Māori engagement - Para Kore ki Tamaki
- Business engagement - Northcote Business Improvement District (BID)
- Schools - Ministry of Education, Onepoto Primary and Northcote Intermediate
- Subject matter experts - Envision / Zero Waste Network

Core Purpose for Action Plan

To create an action plan and manifesto
for a 'Para Kore Zero Waste Northcote'

In a way that supports relationships
and advocates to bring the plan to life
through action

So that as Northcote evolves, we all
have a role in creating and living in a
better future that is zero waste

He aronga poto i tā mātou mahere

Our plan at a glance

We will focus on five outcomes to guide our work and make Kaipātiki a better community for all. Our aspirations are outlined below.



Birkenhead Library.

Outcome 1: Te whai wāhitanga me te oranga | Belonging and wellbeing

Our people are involved in the community, socially connected to one another, and supported to be active, creative, resilient and healthy.



Beach Haven Ferry Terminal.

Outcome 4: Te Ikiiki me ngā tūhononga | Transport and connections

Our people have many transport options and can easily and safely move around and find their way.



Le Roys Bush Reserve, Birkenhead.

Outcome 2: Te taiao | Environment

Our natural environment is protected and restored for future generations to enjoy.



Aerial view up Birkdale Road, Birkdale.

Outcome 5: Te āheinga me te taurikura | Opportunity and prosperity

Our people can buy local, live local and work local.



Shepherds Park, Beach Haven.

Outcome 3: Ngā wāhi me ngā takiwā | Places and spaces

Our built environment is high quality, vibrant, well-maintained, reflects the culture and heritage of Kaipātiki, and meets our people's needs.



Funding breakdown 2020-21

- Eke Panuku \$20,000 + retail space
- KLB - Waste Solutions \$20,000
- WMIF 50% (first half funding year) \$10,000

Total \$50,000

Action Plan – 5 work streams (from co-design process)

1. Leadership, Advocacy and Empowerment
2. Activation and Communication
3. Food Systems
4. Development Planning
5. De/Construction

1. Leadership, Advocacy & Empowerment

Actions completed:

- Co-design of action plan
- Town centre space secured for hub
- AUT students – “Waste Free Wednesdays”
- Zero waste community activator role
- Robyn Forryan appointed
- PHD student joined team to support behaviour change outcomes, monitoring & evaluation - interviews to come



Next steps:

- Increase community engagement in household and business waste minimisation
- Waste champions network
- Engagement & naming the Hub – support Take Mauri Take Hono framework, reflect aspirations, engage young people

Zero Waste Hub Northcote



Zero Waste Hub

How it's going...

- 100% donated props
- Hub open Wednesday - Saturday 10am - 2pm
- 208 visitors to the Hub who have discussed Zero Waste
- Community drop-ins, workshops and hui venue
- Baseline household waste survey started
- 11 volunteers signed up to help out at the Hub + 4 awaiting training
- Recycling programme at library during school holidays - 18 children and 6 adults
- 5 workshops - 22 attendees - composting, bokashi, upcycled fashion, waste reduction
- Drop-off recycling collection of small items not in kerbside collection eg batteries
- Curtain drop-off for altering + free curtains to people with gold card or community card
- Potential to act as North regional hub partner instead of south pickup



2 Activation and Communication

Actions completed:

- Graphic identity for zero waste work
- Developing waste minimisation resources, signage and imagery for public places
- Telling local stories of change in accessible publications and locations eg Everyday Northcote and libraries
- Working with Para Kore ki Tamaki on outreach to Mataawaka Māori, Kura kaupapa re Te Ao Māori messaging/ engagement
- Developing information in Te reo, Chinese, Tongan and more with support of volunteers
- Bin-free parks trial – Richardson, Greenslade and Jessie Tonar



Next steps:

- Engage schools in Bin-free parks
- Pilot a Harvest Festival/ Matariki Festival to celebrate and promote zero waste
- Initiate fun and friendly Para Kore Zero Waste neighbourhood activations
- Provide waste minimisation advice to new residents and businesses
- Repair Café before Xmas (Covid permitting)

ZERO WASTE HUB NORTHCOTE

A zero waste world is one where resources are valued and nothing is wasted. The goal of zero waste is to minimise and ultimately eliminate waste.

Auckland Council has a goal for the city to be zero waste by 2040. Changing the way we do things in our communities is a key part of this.

Northcote has the potential to lead the way and inspire others to reduce waste going to landfill.

As Northcote develops, we all have a role in creating and living in a better future that protects Papatūānuku.

Be involved and get in touch!

-  **47 Pearn Place, Northcote**
-  **facebook.com/groups/zerowastehubnorthcote**
-  **zerowaste@kaipatiki.org.nz**

Info & flyers

WHAT'S HAPPENING

- Kaipātiki Project has appointed Robyn Forryan as our Northcote Zero Waste Activator.
- Zero Waste Hub, featuring beautiful mural, opened at 47 Pearn Place close to the library.
- Regular workshops, events and opportunities to learn more about zero waste.

HOW WE CAN HELP YOU

- Show you how to recycle, compost, repair and offer other easy zero waste tips.
- Answer your zero waste questions or find someone who can help.

WHAT CAN YOU DO

- Visit Zero Waste Hub or volunteer to help out.
- Attend workshops and events. Sign up to find out what is happening.
- Recycle correctly.
- Compost your food scraps.
- Fix the broken and share the unwanted.
- Buy secondhand.

Be involved and get in touch!

-  **47 Pearn Place, Northcote**
-  **facebook.com/groups/zerowastehubnorthcote**
-  **zerowaste@kaipatiki.org.nz**



Bin-Free Parks

To restore mauri of local parks, a bin-free trial is taking place in Jessie Tonar Scout Reserve and Richardson Park. This is to encourage everyone to take their rubbish with them, reduce waste that goes to landfill and increase awareness of waste we produce and how to reduce / recycle / upcycle.



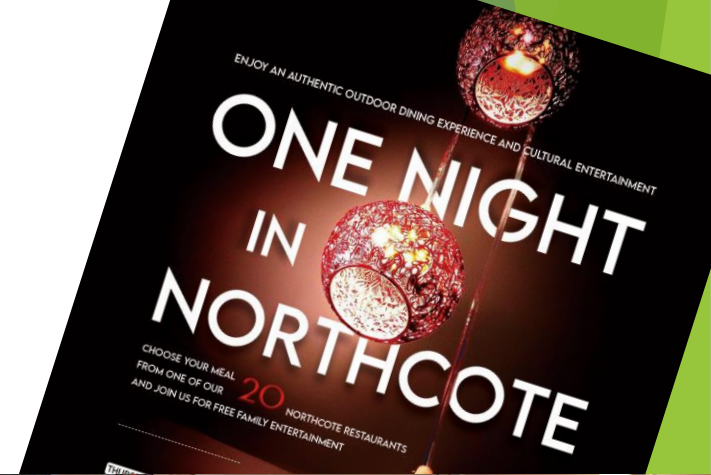
3 Food Systems

Actions completed:

- Increase support for gardening and composting skills within local community via workshops – on-going
- Community garden initiated with Northcote Intermediate
- Supporting Northcote BID on ways to use town centre transformation opportunity to establish Northcote as a 'food destination' with a focus on zero waste
- First event 'One Night in Northcote' (see pic) with Para kore ki Tamaki, Compost Collective, Chinese Conservation Education Trust & Pacific Vision Aotearoa

Next steps

- Support Council's kerbside food scraps collection- in partnership with KCFT and Kainga Ora tenants
- Support wider 'close the loop' food scraps with Northcote Intermediate Compost Hub
- Promote Sharewaste app for local connections



4. Development Planning

Actions Completed:

- Working with Eke Panuku development team over past 2 years to identify opportunities to address waste systems through development planning
- Identified opportunities to promote innovative approach to developers

Next Steps:

- Introduce provisions into development agreements - waste to be considered at all stages of new building design, construction and use

27 SEPTEMBER 2021

Global spotlight on Northcote Town Centre regeneration

NORTHCOTE



5 De/Construction

Actions Completed:

- Zero waste hub exploring potential to make salvaged materials available to community through 'banks', notice board 'matching' or event days - curtains, carpets, furniture, wood, doors and windows.
- Initial online workshop 28 September - Mana whenua, Kāinga Ora, Eke Panuku, Waste Solutions, Healthy Waters, Kaipātiki Project – 30 participants

Next Steps:

- Detailed workshop session - presentations from each partner to understand roles & responsibilities, lessons learnt for how best to ensure para kore policy & practice within developments eg low-hanging fruit, initial focus, barriers, costs and training needs
- Explore potential for relocation
- Explore concrete-asphalt recovery and use of recycled aggregate
- Plan for soft stripping of reusable and valuable material from selected sites
- Support establishment of construction waste management plans within partner developments, including diversion targets to meet Homestar requirements

Funding breakdown 2021-22

- Eke Panuku \$20,000 + retail space
- KLB IES \$20,000
- Waste Solutions Community Wastewise \$30,000
- WMIF 50% (second half funding year) \$10,000

Total \$80,000

* Newsflash – Inorganics Warehouse contract



Pātai? Questions?

How do you think the Para kore Zero waste Northcote project can better support and engage stakeholders and community to better realise the board's aspirations?



Kaipātiki Project
share in nature's revival

Ngā mihi nui ki a koutou

Thank you



Kaipātiki Project

share in nature's revival



Streamcare Kaipātiki

Presentation to Kaipātiki Local Board



Streamcare Kaipātiki overview

- Started 2017 by Kaipātiki Project & EIA to address gaps in freshwater engagement schools programme
- Focus now: Citizen science freshwater monitoring - engaging community & schools with their local waterways to grow kaitiakitanga/ stewardship
- Data recorded in Citizen Science Database and NZ Freshwater Fish Database.
- Programme helps us understand and take action to protect and enhance nature with a freshwater focus, track at-risk species, and identify pests
- Control site Oruamo upstream - Eskdale Reserve
- Best quality environment possible in an urban environment – aspirational goal for others
- Working in collaboration supports each organisation to bring learnings and strengths from elsewhere to grow quality and participation
- KP focus on experiential education, Mātauranga Māori, Kakahī/ freshwater mussels and Titiwai/ glow worms
- PFK focus on pest animal and plant management around reserves and halos



Kaipātiki Project
share in nature's revival



KLB state of the environment

- Separate rigorous analysis of 10 waterways by EIA
- Oversight by Healthy Waters, funded by local board
- Detailed presentation this afternoon
- Together, they provide an overall stream health state of the environment monitoring programme, with support for community kaitiakitanga



Kaipātiki Project

share in nature's revival

He aronga poto i tā mātou mahere

Our plan at a glance

We will focus on five outcomes to guide our work and make Kaipātiki a better community for all. Our aspirations are outlined below.



Birkenhead Library.

Outcome 1: Te whai wāhitanga me te oranga | Belonging and wellbeing

Our people are involved in the community, socially connected to one another, and supported to be active, creative, resilient and healthy.



Beach Haven Ferry Terminal.

Outcome 4: Te Ikiiki me ngā tūhononga | Transport and connections

Our people have many transport options and can easily and safely move around and find their way.



Le Roys Bush Reserve, Birkenhead.

Outcome 2: Te taiao | Environment

Our natural environment is protected and restored for future generations to enjoy.



Aerial view up Birkdale Road, Birkdale.

Outcome 5: Te āheinga me te taurikura | Opportunity and prosperity

Our people can buy local, live local and work local.



Shepherds Park, Beach Haven.

Outcome 3: Ngā wāhi me ngā takiwā | Places and spaces

Our built environment is high quality, vibrant, well-maintained, reflects the culture and heritage of Kaipātiki, and meets our people's needs.





Streamcare Kaipātiki stats

Activity/Data	2021	2020
Schools participating	6	4
School monitoring/workshops	15	15
Number of school participants	244	121
Community groups participating	3	0
Community monitoring sessions	5	0
Stream sites monitored	13	7
Community Freshwater workshops	2	0

Note: supported by Kaipātiki Local Board \$10,000 and Auckland Council Community Coordination and Facilitation Grant \$39,000

Te Taiao - Our natural environment is protected and restored for future generations to enjoy



Kaipātiki Project
share in nature's revival



Increased capacity

In the past year we have strategically increased collaboration & capacity and realised opportunities for on the ground delivery towards improvement of ecological health and increasing the quality & quantity of citizen monitoring.

We enabled school monitoring at more sites and increased number of students, with volunteer/parent support. We have WaiCare kits accessible for school and community groups.



Te Whai Wāhitanga me te Oranga - Our people are involved in the community, connected to one another, and supported to be active, creative, resilient and healthy.



Kaipātiki Project
share in nature's revival



Community engagement

In October 2020, Brett Stansfield- EIA Freshwater Ecologist delivered two Community Freshwater Monitoring workshops, to 20 people. Now, three community groups are monitoring Upper Duck Creek and Wai Manawa-Le Roys Bush.



Kaipātiki Project
share in nature's revival



Drome View

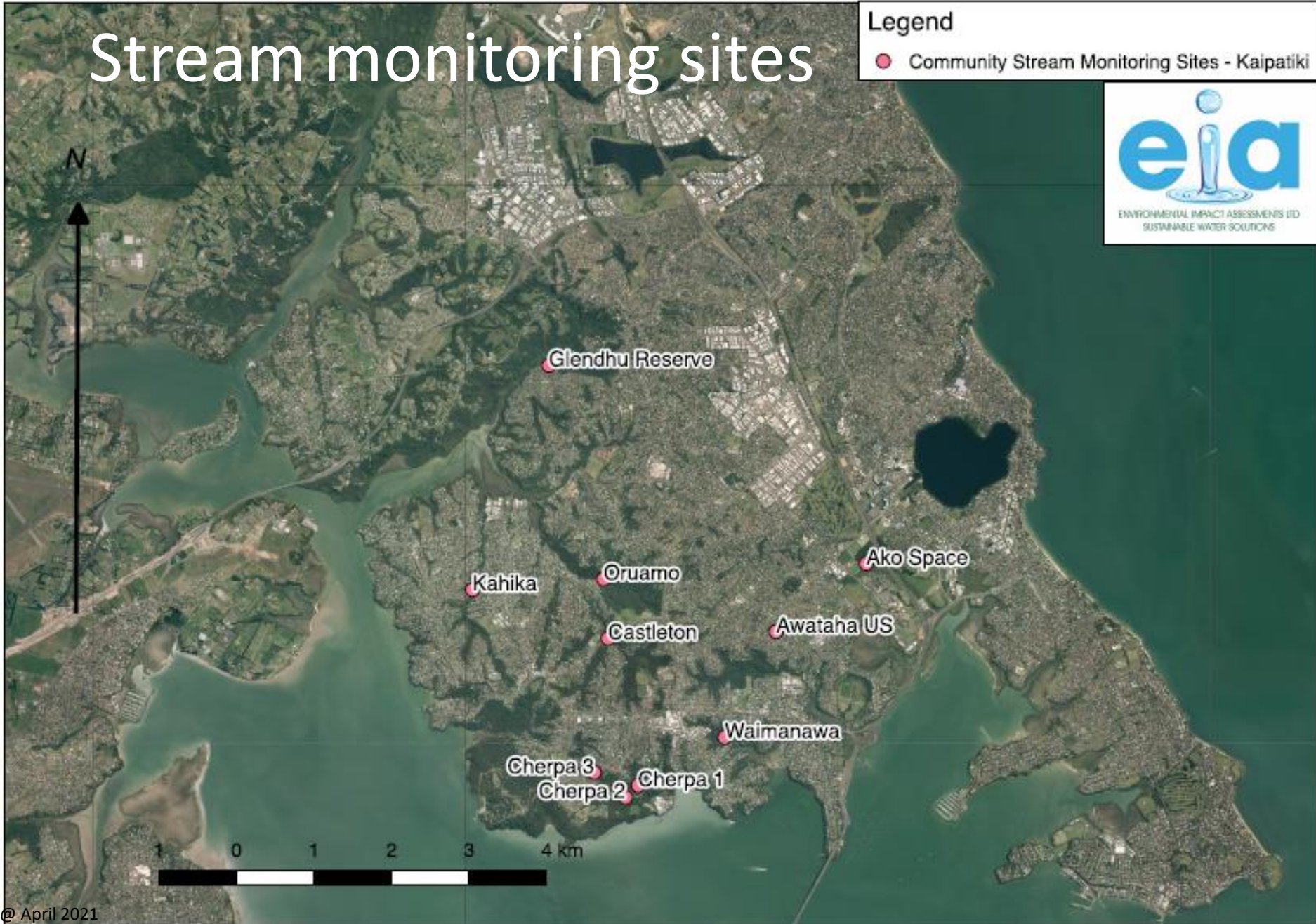
- Engaged long-running community restoration at Drome View PI
- Local residents have undertaken incredible work in past 5 years to restore stream that flows past their properties.
- The next step is to start a water testing regime using the community test kits available.



Stream monitoring sites

Legend

- Community Stream Monitoring Sites - Kaipatiki





So much more...



The programme incorporates so much more than freshwater monitoring alone.

EIA includes native fish, specific conductivity, turbidity and flow.

Students enthralled when electric fish traps mean they can observe fish up close

Rare species - Red Fin Bullies, Crans Bullies, large Banded Kōkopu

Other observations include large Kōura, Tuna (eels) and Kākahi



Kaipātiki Project

share in nature's revival



Embracing Te Ao Māori

Kaipātiki Project Freshwater Activator incorporates karakia timatanga, Te Reo Māori names of plants, birds and fish, Matauranga Māori including rongoā, whakatauki, stories and atua, and closes with Karakia whakamutunga.

We are working to research the history of Kaipātiki waterways from first settlement, and co-design signage to highlight activity at each site.



Wai Māori- Fresh water

Oranga Wai, Oranga Tāngata
Healthy Water, Healthy People

Te Whai Wāhitanga me te Oranga - Our people are involved in the community, connected to one another, and supported to be active, creative, resilient and healthy.



Kaipātiki Project
share in nature's revival



Innovation: Dr Dan Hikuroa takes eDNA session

At Glendhu Reserve, 26 students from Bayview Primary, parents, teachers and community members accompanied Dr Dan to learn about eDNA testing - an innovative technique that samples stream water to identify what is in the stream.

This innovation enables students to investigate stream life without setting fish traps. The benefit here is that trap-shy and hard-to-find species species eg young galaxiids and invertebrates, FW mussels and pest species can be identified by their DNA to inform future action.



Te Taiao - Our natural environment is protected and restored for future generations to enjoy



Kaipātiki Project
share in nature's revival



Dr Dan Hikuroa: e-DNA cont.

Began by considering ‘turangawaewae’ – a place to stand - and embracing the way everything needs a turangawaewae.

Learned how eDNA tests revolutionising our ability for kaitiakitanga in streams

Students launched newly created eco-sourced, native seed balls.

Currently funded through EPA as a prototype to build engagement with iwi and Māori communities, we will help provide feedback on value of e-DNA and explore potential collaboration for further application.



Te Whai Wāhitanga me te Oranga - Our people are involved in the community, connected to one another, and supported to be active, creative, resilient and healthy.



Kaipātiki Project
share in nature's revival



Kaipātiki Project

share in nature's revival



Thankyou Kaipātiki Local Board

For your support 2020/21

Look at what we're achieving together!



catalyse

Totaravale Placemaking
March-August 2021

www.catalyse.co.nz

Totaravale Placemaking

- Built on work done in 2019 and 2020 that created small public art works and this little library
- Led to the completion of a community herb garden alongside the little library with 8 locals and Bunnings:
<https://www.facebook.com/totaravaleplaycentre>
- And a pātaka kai, built by 4 locals with support from Rotaract and Bunnings, installed outside Target Road primary school on 15 August:
<https://www.facebook.com/Totara-Vale-Fruit-and-Vege-swap-cart-Pataka-Kai-Target-Road-School-103257545404634>



ale
centre



D A BOOK
A BOOK
A STAKE
IT HERE

WANTED



Process

- Worked with local energy associated with Play Centre and Rotaract
- Facilitated an ideation and co-design workshop
- Provided mentoring, training and momentum to locals
 - Individuals and Rotaract as an organisation
- Engaged Bunnings Glenfield and introduced locals to hold these relationships
- Provided planning, administration, communications and management services to each project as well as organising materials

Outcomes

- Increased inspiration, creativity and open dialogue around community development and placemaking in Totaravale
- More local connection and collaboration:
 - Strong relationships to better understand local needs and aspirations
 - 6 people keen to kaitiaki the pātaka kai and generate more local placemaking
 - Rotaract committed to supporting these local placemaking activities
 - Council relationships developing to enable future installations in Rewi Alley Reserve
- Residents saying the Play Centre entry area is now “a community focal point”

Future

- Residents are very appreciative and engaged with the little library and garden especially
- Rotaract and Bunnings are keen to support local efforts
- The pātaka kai was installed days before lockdown and has been empty since so may require some energy to activate
- The local group has grown slowly and has a lot of energy
- Future plans focus on beautifying the entry to Play Centre
- Overall, capacity for placemaking is limited and has benefitted from creative and project management support.
- Further support alongside locals would help sustain and grow placemaking in Totaravale

Thank you

www.catalyse.co.nz

denise@catalyse.co.nz



www.placemaking.nz

[https://www.facebook.com/
groups/placemakingnz](https://www.facebook.com/groups/placemakingnz)

Getting on Board

*Kaipātiki Governance Training
Programme, 2021*

LEAD

CENTRE FOR
NOT FOR PROFIT
GOVERNANCE & LEADERSHIP




What we did

- 3 face to face and 8 online training workshops - Kaipātiki groups only.
- Opportunity to participate in 12 LEAD public online courses at no cost
- 126 enrolments were received for the exclusive Kaipātiki programme
65 attendances
- Five organisations have engaged in the one- on-one coaching
- 19 board members registered for the complementary LEAD virtual workshops

“The materials and presentations are delivered in a clear, concise and easily understandable format.”

Who participated

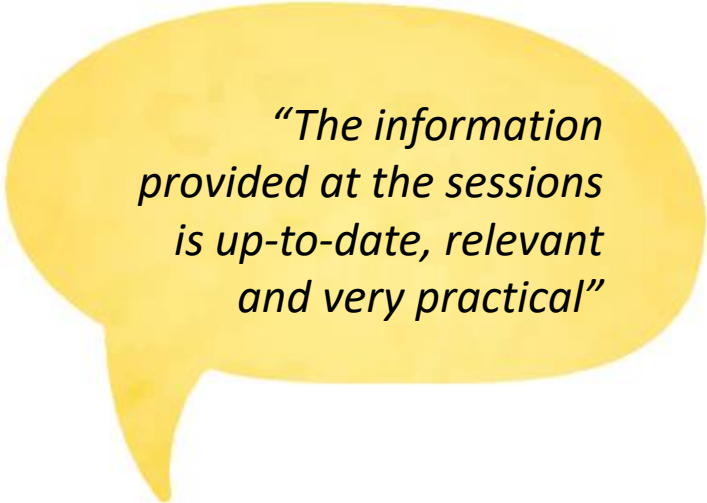
- Uruamo Maranga Ake Marae Trust
- Pestfree Kaipātiki
- North Art
- Bayview Community Centre
- Birkenhead Residents Association
- Birkdale Beach Haven Community Project
- Kaipātiki Community Facilities Trust
- Highbury House
- Hearts and Minds
- Northcote Tigers Rugby League Club
- Grief Centre
- Kaipātiki Youth Development Trust
- Youthline
- North Shore Resource Centre
- Glenfield Community Centre
- Conscious Kids
- Harbour Sport



"I also really enjoyed connecting with other attendees and learning from them"

What we covered

- Issues for Chairs
- Governance 101 for new Board members
- How Boards add Value
- Partnering with Tangata Whenua
- Strategic Leadership
- Effective Decision making
- Building the Dream Team
- Increasing diversity
- Stewardship of the Resources
- Managing risk/legal issues
- Appraising the work of the Manager
- The leadership equation
- Getting the balance right: governance vs management
- Stakeholder engagement



“The information provided at the sessions is up-to-date, relevant and very practical”

How we made a difference: Evaluation Results

1

Many participants in the evaluation report sharing their learnings with the rest of their boards

2

All participants report improvements in how they participate in governance


3

All participants report their boards improved their governance practice

"I appreciated discussions with the facilitators and other participants, sharing concerns and community issues"

Contributions to personal governance effectiveness. . .

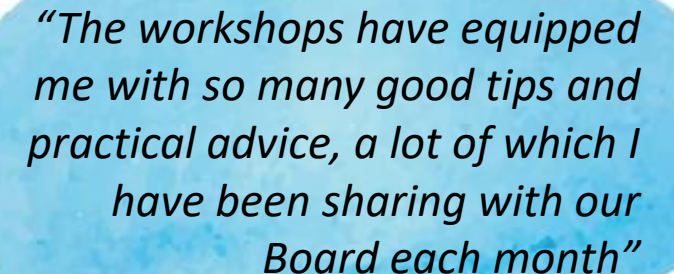
- Increased confidence and knowledge
- Understanding of Te Tiriti and how can we improve engagement
- Increased critical thinking skills
- Greater insight
- Better understanding of roles and responsibilities



“Gave me more confidence to give suggestions and ask more questions during our meetings”

Contributions to board effectiveness. . .


- Connections with other organisations and sharing of information and learnings
- Upskilled members of our organisation that were new to governance.
- Better meeting process
- Focus more on what matters
- Policy development
- Rewriting of organisation key documents
- Focus more on governance role
- Better understanding of risks and legal obligations
- Better understanding of partnering with Māori



“The workshops have equipped me with so many good tips and practical advice, a lot of which I have been sharing with our Board each month”

We followed up with those who registered but didn't show up . . .


- I was finishing up in the Chairperson role so I realised the information may not be too relevant.
- I'm working on a start up business so any spare time I have when I'm not working my day job
- Sounds like these courses are fantastic and are such a great resource for the community.....just not for me at the current moment.
- My job changed and I could no longer consider taking on this role.
- Please be rest assured that my lack of attendance had nothing to do with the effectiveness of your workshop.



"I would definitely recommend your workshop to others"

Suggestions made for improvement . . .

- More face to face
- More interactive activities
- Online event or diary reminders
- Maybe 15 mins longer for each session
- More sessions on working with newcomers in the community and how to engage with Maori and Pasifika communities more effectively.



*“Good mixture of
face to face and
online”*

Thank you so much to Kaipatiki Local Board for sponsoring the Governance Training - I have thoroughly enjoyed and learned a lot from every session!

Evaluation Participant

Infrastructure and Environmental Services October 2021

Hannah Brightley – Relationship Advisor

Anna Halliwell – Healthy Waters Specialist

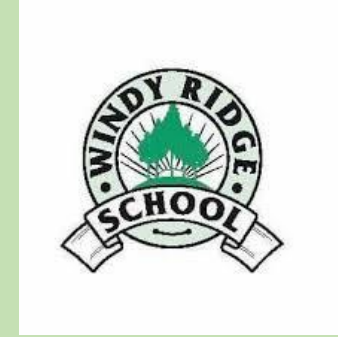
Brett Stansfield – Director of Environmental Impact Assessments Ltd

Background

Outcome 2: Environment

Our natural environment is protected and restored for future generations

		2019/2020	2020/2021	2021/2022	2022/2023	2023/2024
1180	Kaipātiki water quality monitoring and implementation programme	\$30,000	\$43,000	\$46,000 (+\$2,000 carry forward from 2020/2021)	\$43,000	\$43,000



Kaipātiki Local Board Water Quality Network

Results Summary August 2019 – May 2021



The Programme

- 10 stream sites
- 9 catchments
- Water quality – 20 analytes measured
- Aquatic invertebrates and fish – 2020/2021 year
- Additional community monitoring 6 agencies
- Funded by Kaipātiki Local Board

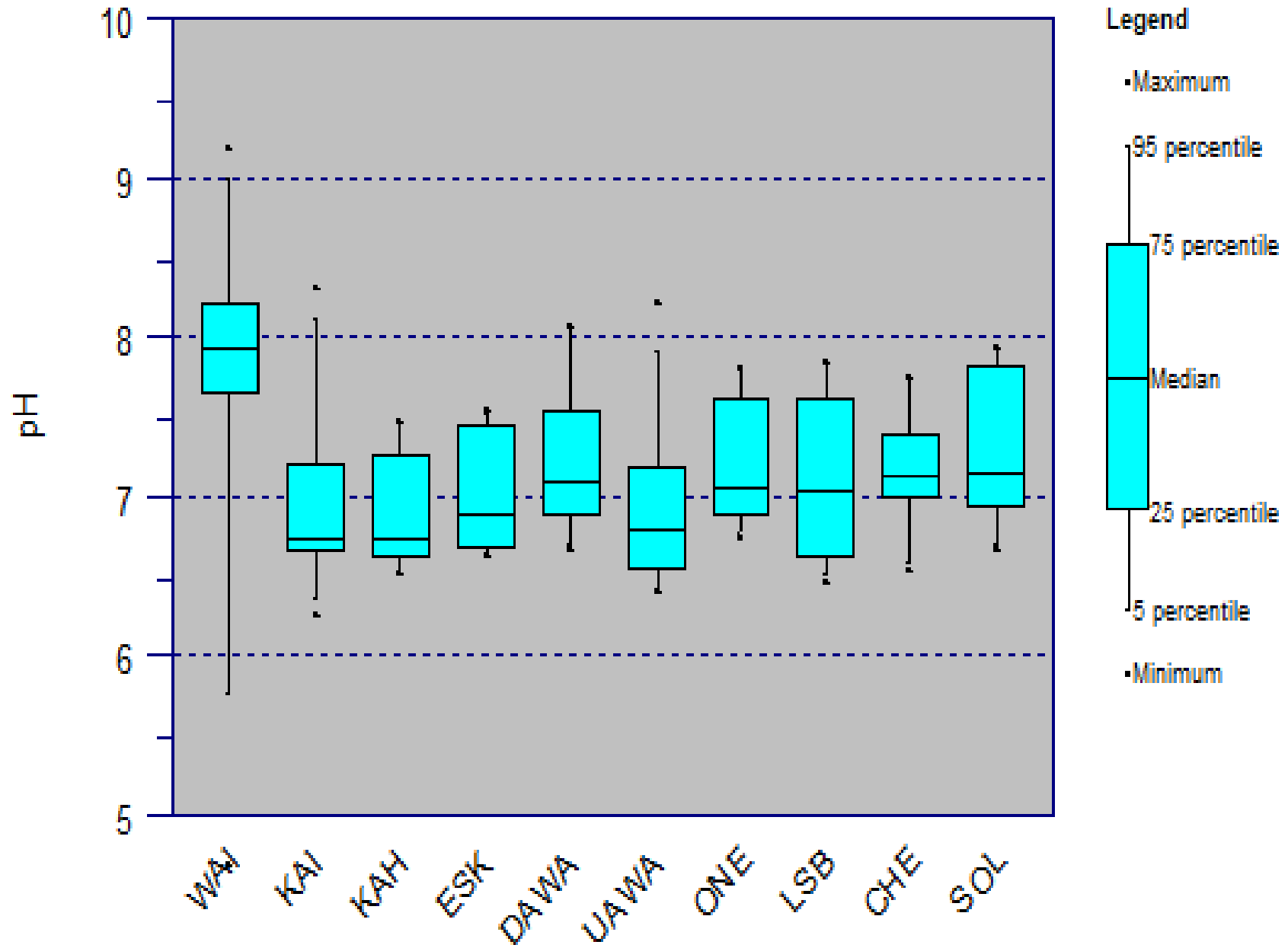


- WAI – Wairau Creek
- ESK – Eskdale Stream
- Castleton – Castleton Creek
- LSB – Little Shoal Bay
- KAH – Kahika Creek
- Glendhu Reserve – Bayview Stream
- KAI – Kaipātiki Stream
- Ako space – Smiths Bush
- SOL – Soldiers Bay Stream
- CHE – Chelsea Stream
- ONE – Onepoto Stream
- UAWA – Upstream Awataha
- DAWA – Downstream Awataha

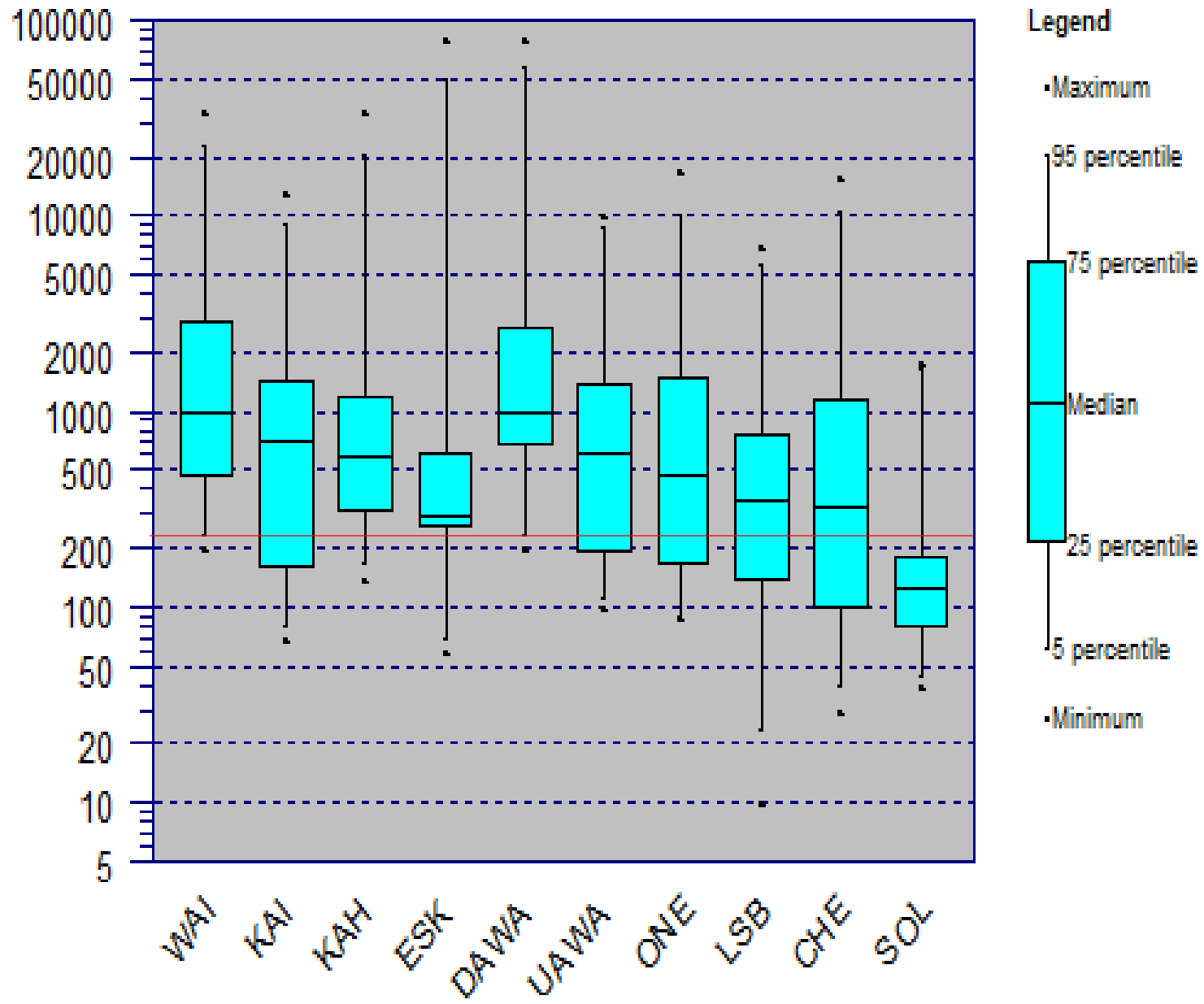


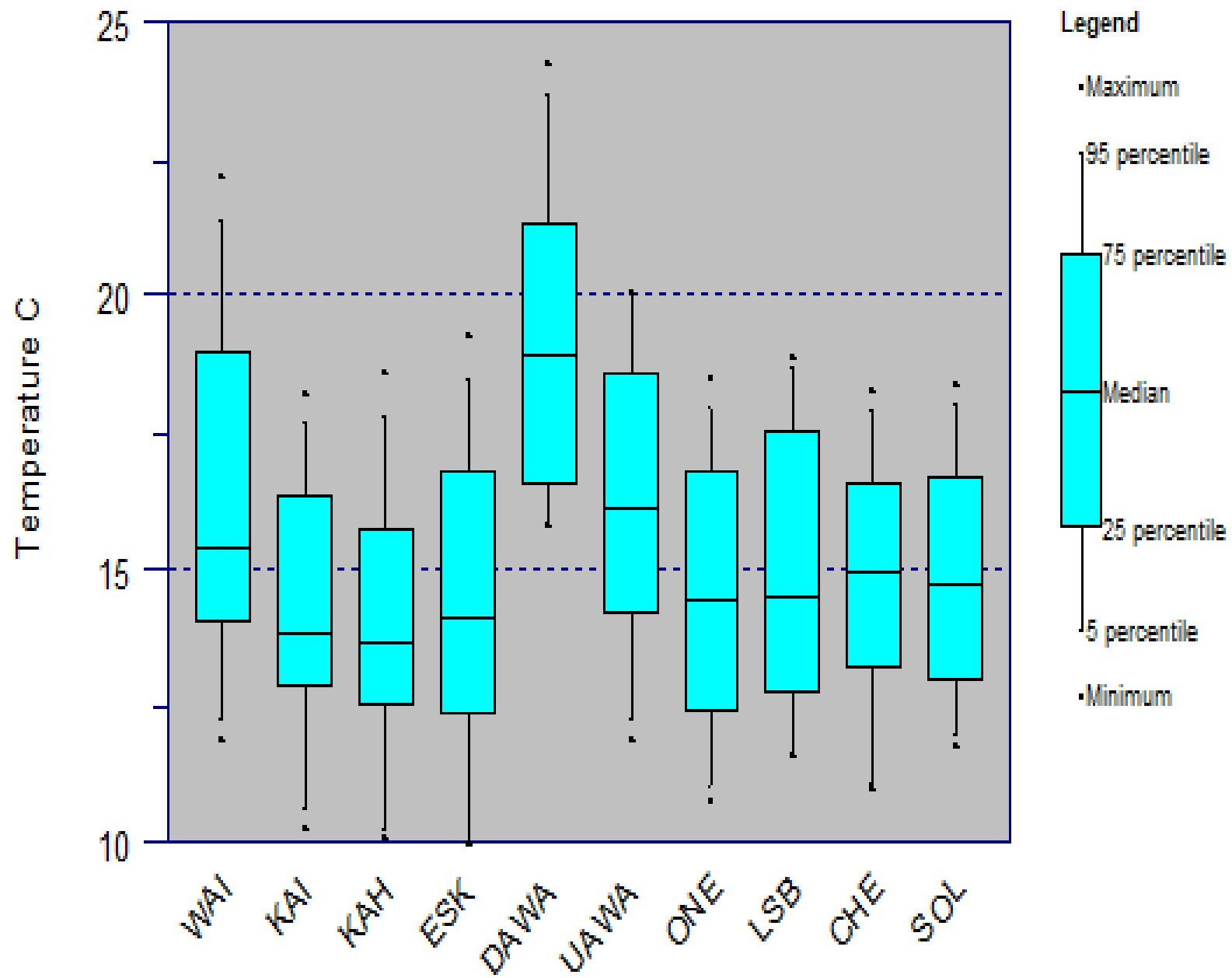
NATIONAL POLICY STATEMENT FOR FRESHWATER MANAGEMENT

- Contains enforceable water quality and ecology standards
- Degraded sites below bottom line must be improved
- Sites above bottom line must be maintained
- Does not contain metal concentration standards
- Using ANZECC 2000 for metals until ANZECC 2021 becomes finalised.

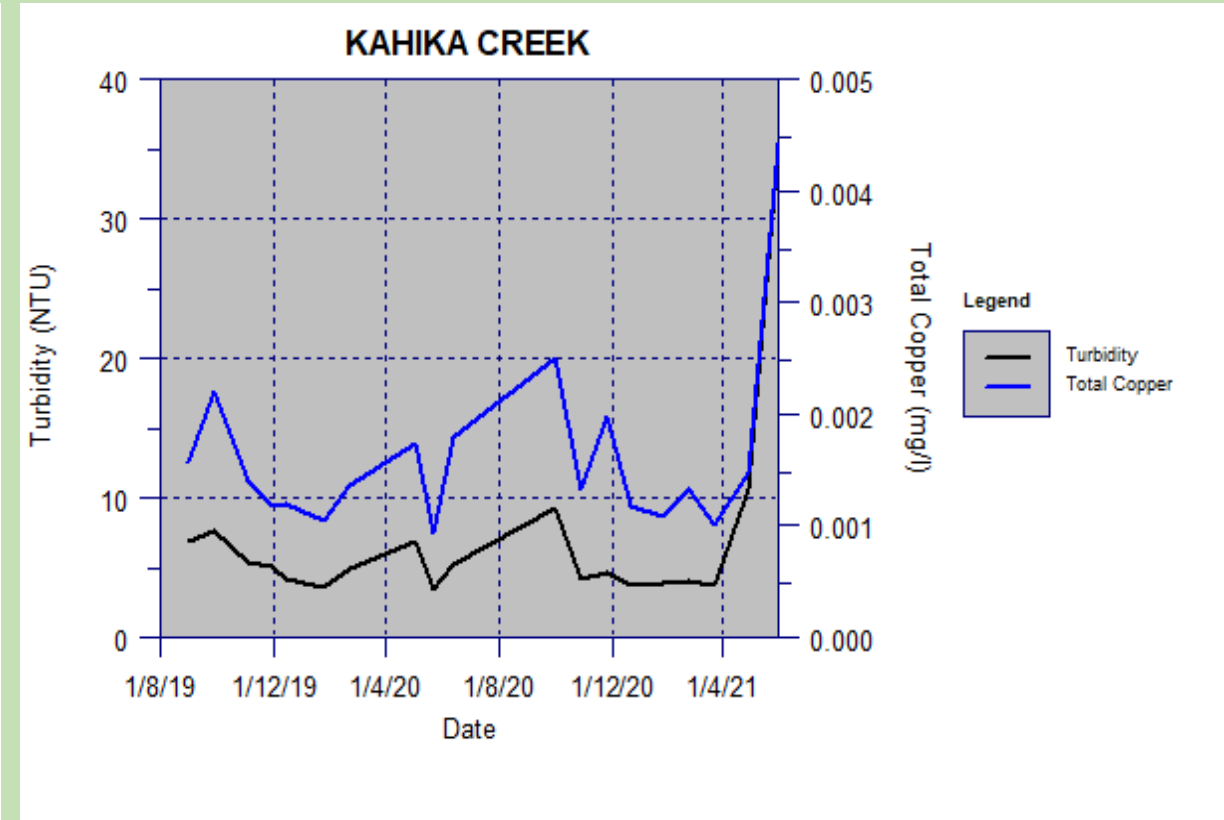
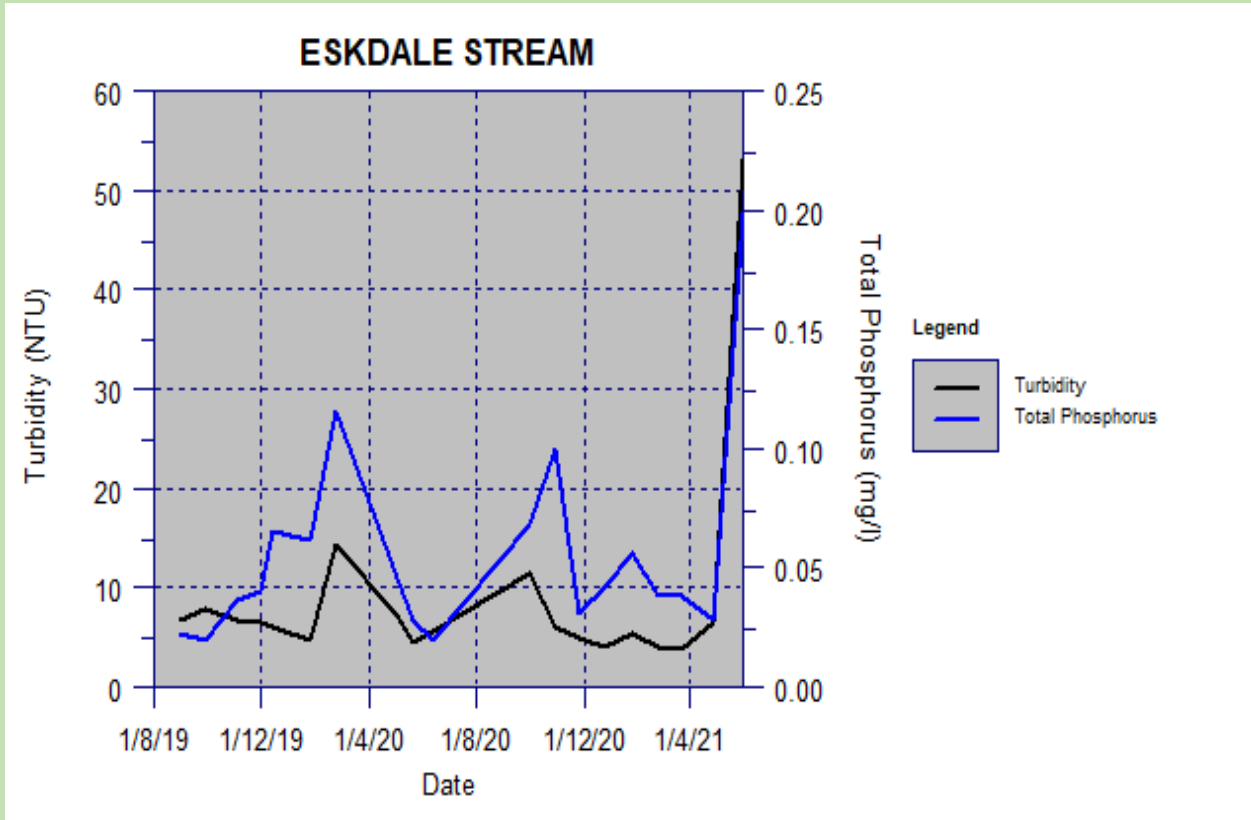


Escherichia coli



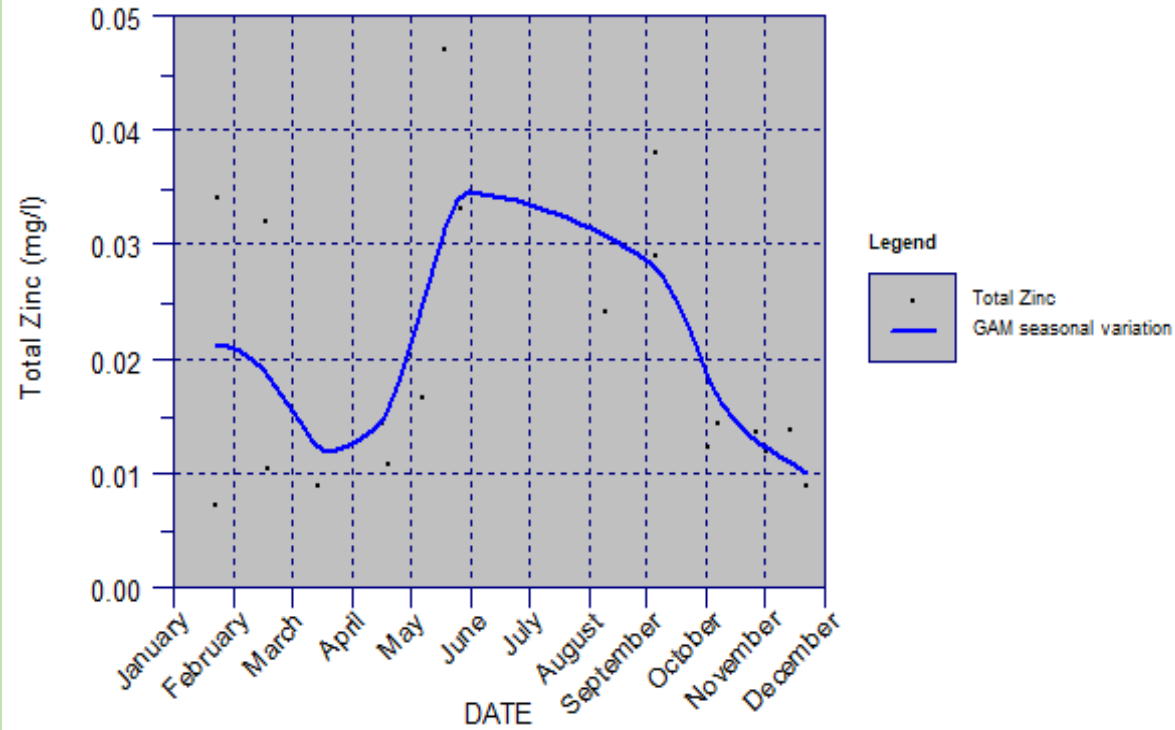


Flow Dependent Analytes

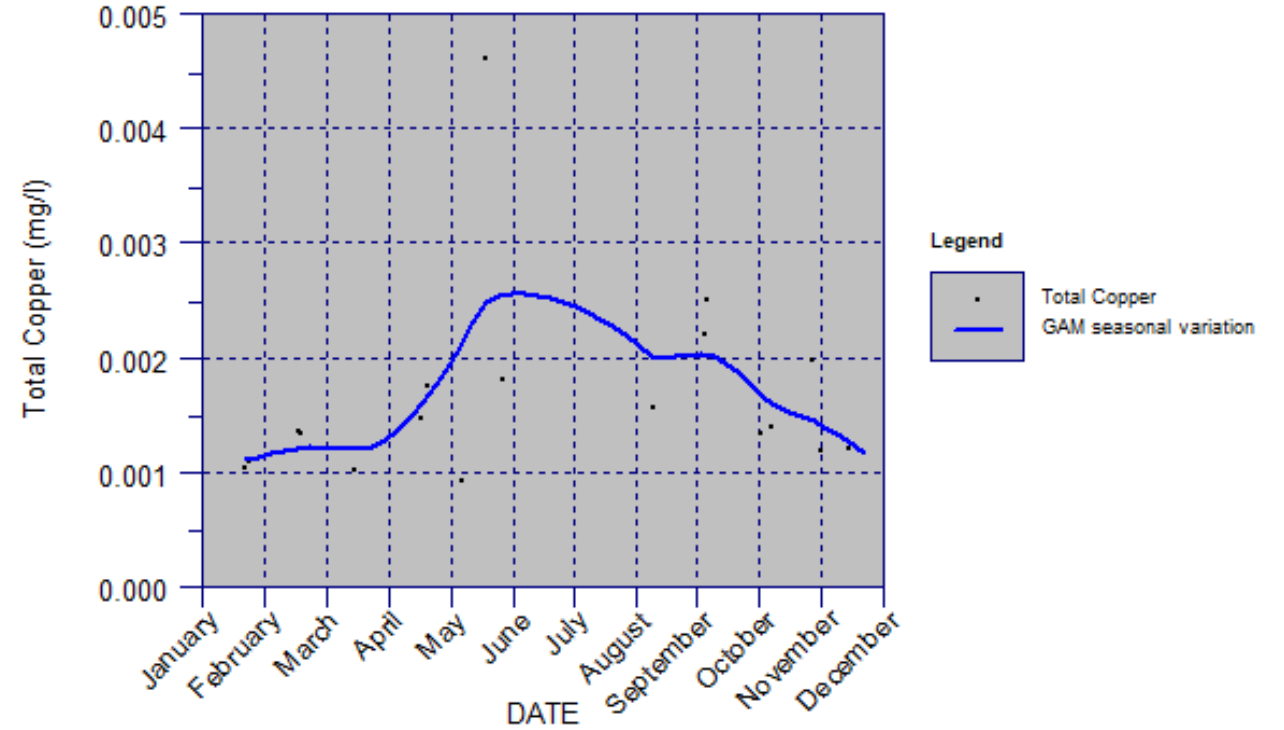


Seasonally Dependent Analytes

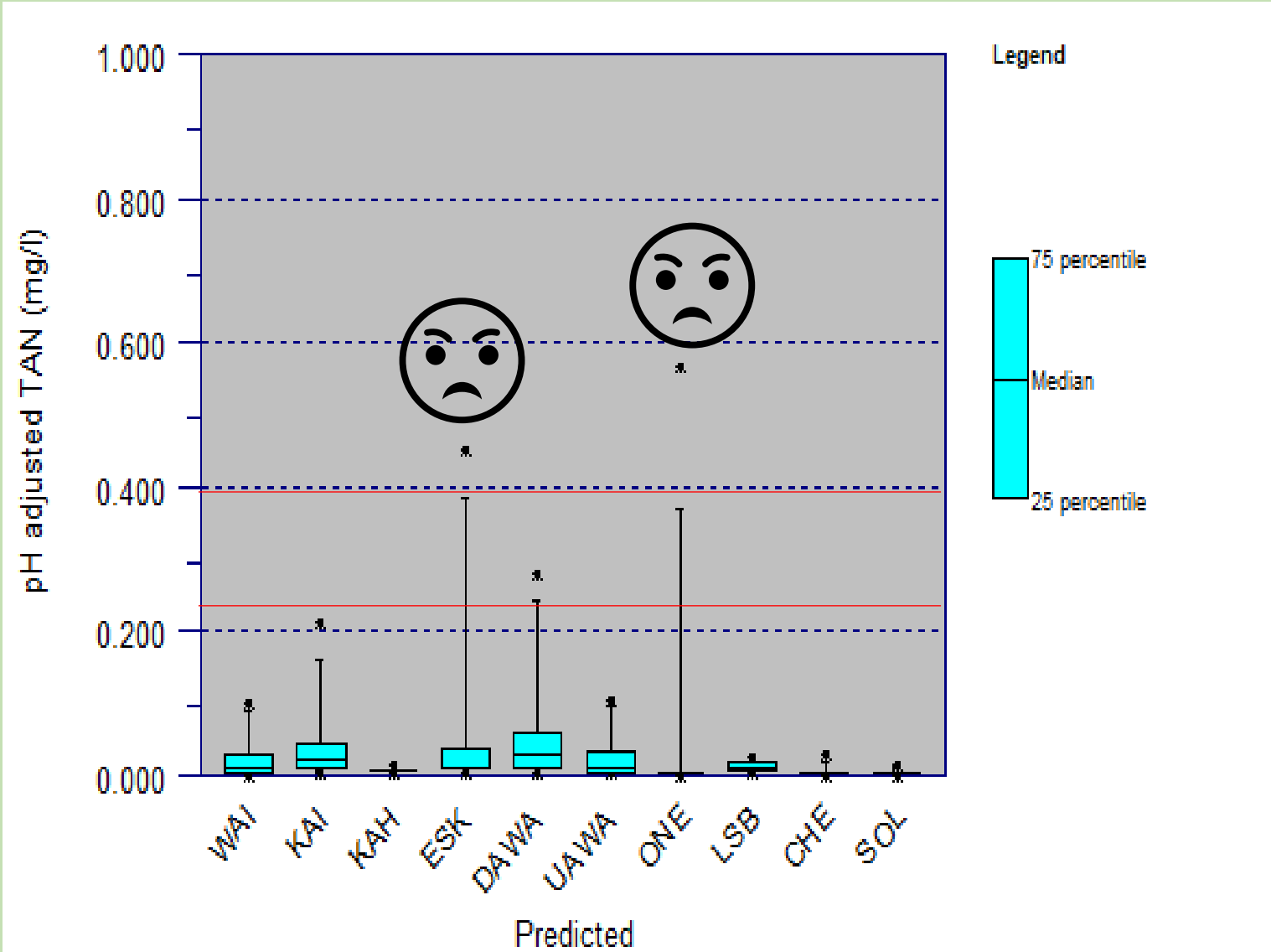
ESKDALE STREAM



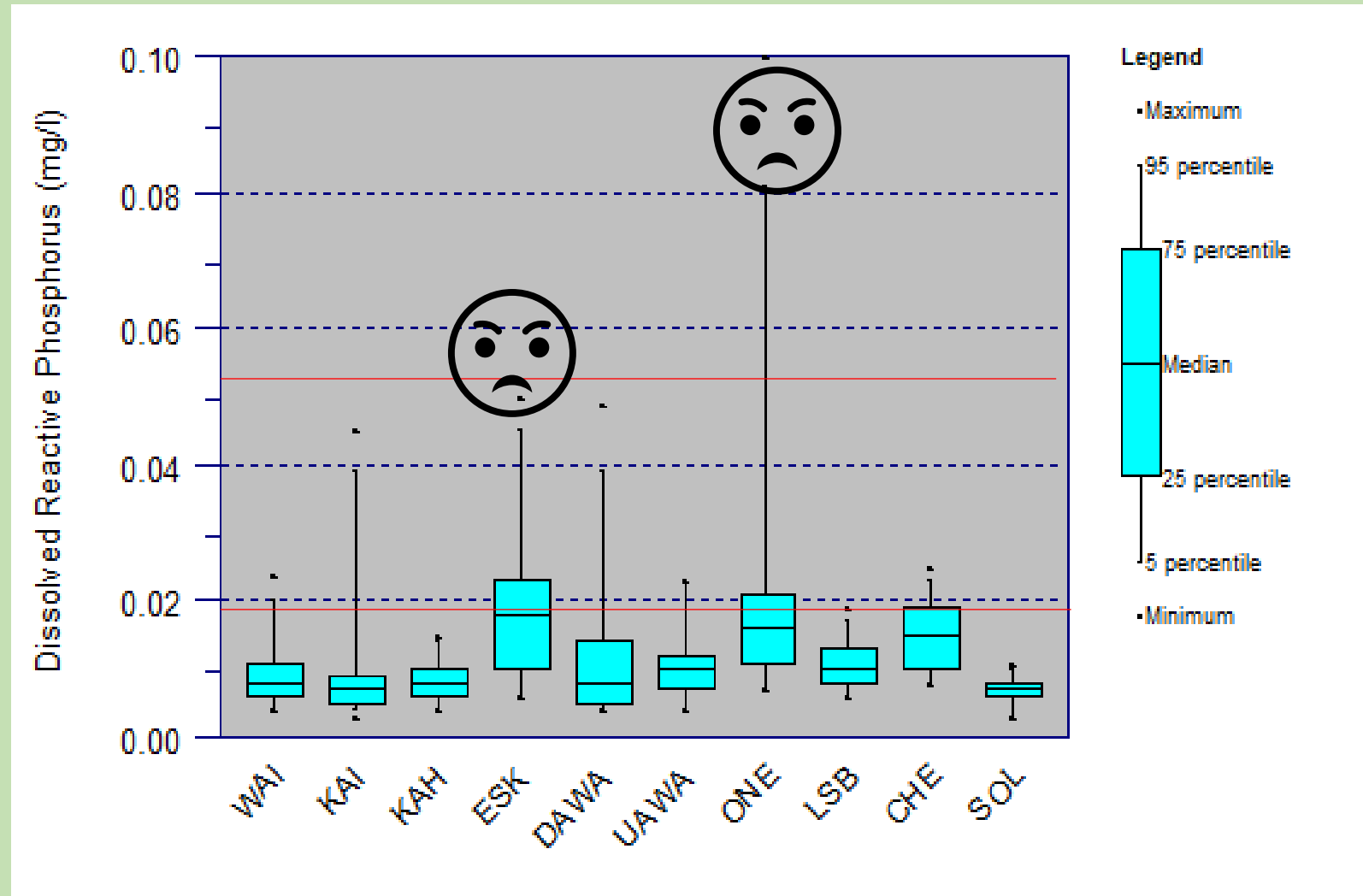
KAIHIKA CREEK



Toxicants



Dissolved Nutrients



Kaipātiki Community Stream Care



Our Fish



Lonfin Eel



Common Bully



Shortfin Eel



Redfin Bully



Banded kokopu

More Fish!



Īnanga

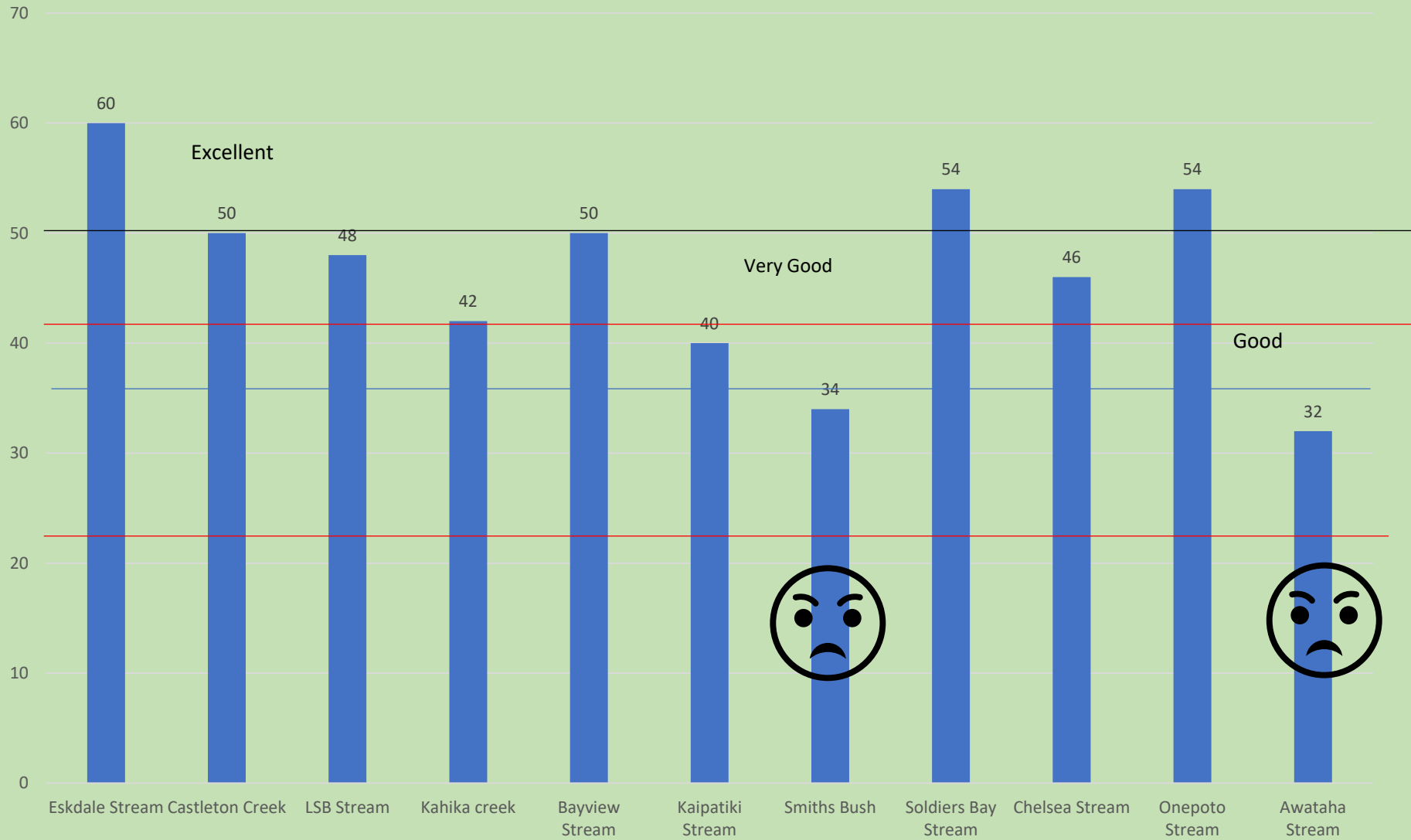


Giant Kokopu



Common Smelt

Fish IBI



Recommendations

- Repeat a further year water quality monitoring at the 10 sites
- Repeat ecology monitoring at sites
- Continue with community monitoring
- Sanitary surveys of some catchments are warranted (Wairau, Kaipatiki, Kahika, Esk, Awataha, Onepoto, Chelsea)
- Sites below bottom line = Castleton Creek, Bayview Stream, Chelsea Stream, Awataha stream Leroy's Bush Stream – ecology,
- Sites below bottom line = Eskdale, Onepoto water quality
- Once off water quality grab sample from degraded sites not previously sampled for water chemistry (Castleton Creek, Bayview Stream)

Our Hui

- Was scheduled for September, new timing TBC
- Verran Primary School
- Hear our tamariki present
- Learn more about our awa
- Set aspirational community goals for our awa



Ngā Hapori Momoho

Draft Thriving Communities Strategy 2022 – 2032

Local Board Workshops: October 2021

Purpose and contents

Purpose: to present the draft Ngā Hapori Momoho | Thriving Communities Strategy for discussion and feedback

We will cover:

- Project introduction and background
- Challenges and opportunities we are responding to in the strategy
- Ngā Hapori Momoho overview
- Next steps
- Questions and comments

Strategy Purpose

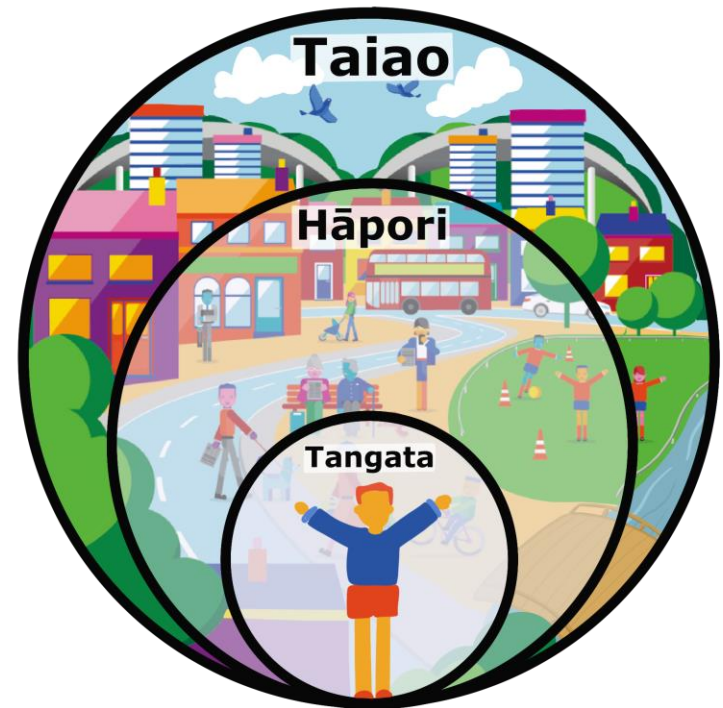
Ngā Hapori Momoho | Thriving Communities

is Auckland Council's core strategy for community and social development.

'All Aucklanders will be part of and contribute to society, access opportunities and have the chance to develop their full potential.'

*- Auckland Plan, Belonging and Participation,
Te whai pānga me te whai wāhi atu*

Te Tiriti o Waitangi provides the bicultural foundation for our understanding of a thriving, multicultural Tāmaki Makaurau.



What the strategy needs to respond to

Since Ngā Hapori Momoho was adopted in 2014:



Auckland Council declares climate emergency



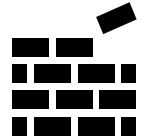
COVID-19 pandemic



Terrorist attacks in Aotearoa



Acknowledgement of the need for indigenous solutions



Local government reforms

The key challenges Tāmaki Makaurau's communities will face over the next 10 years:

01

Many Aucklanders may not be able to fulfil their potential due to increasing inequity & socio-economic disparity

02

Rapid growth & social change could impact on Aucklanders sense of belonging & reduce social cohesion.

03

Existing poverty and inequity could get worse as a result of our changing climate

Strategic framework overview

Ngā Hapori Momoho | Thriving Communities

A response to the Auckland Plan 2050

All Aucklanders will be part of and contribute to society, access opportunities, and have the chance to develop to their full potential.

Outcomes | What we are trying to achieve

Manaakitanga |
Quality of life

Whanaungatanga |
Community connection

Kotahitanga |
Collective action

Kaitiakitanga |
Sustainable futures

Objectives | We will achieve the outcomes by prioritising six key focus areas

Support economic empowerment to enable social transformation

Prioritise and amplify Māori leadership and Māori-led solutions

Reduce inequities and barriers to participation

Support and prioritise whānau + community self-reliance + sustainability

Support community to take action on our changing climate

Grow inter-cultural connection and social cohesion

Where we will focus our effort + investment

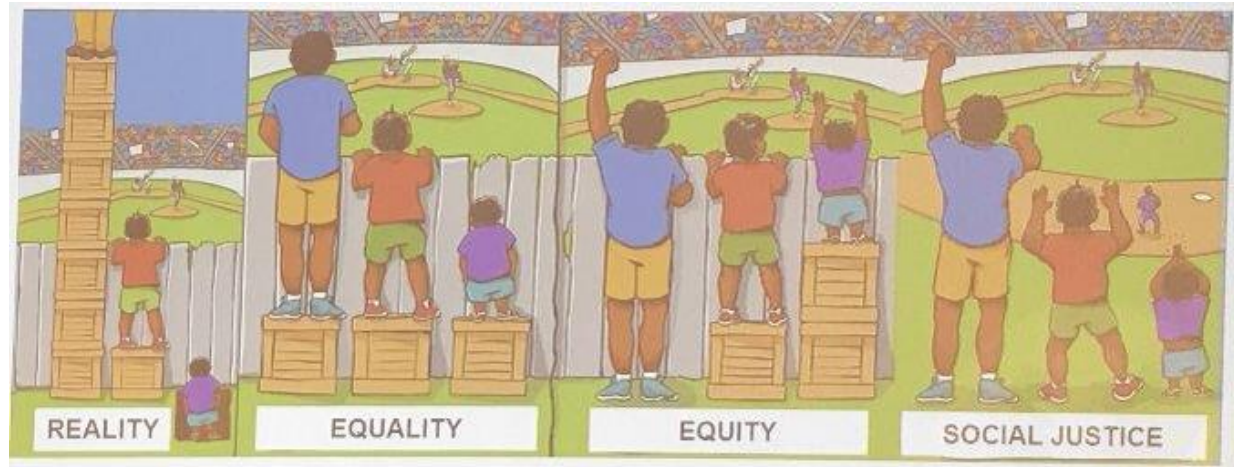
Achieving Thriving Communities outcomes will require us to focus our effort and investment on **those experiencing the greatest inequity**.

• Māori

- Other populations **impacted by structural racism and/or discrimination** including:
 - Pasifika communities
 - Refugees
 - LGBTQ+ communities
 - Disability communities
 - Those experiencing mental health challenges and stigma
 - Those in material hardship

Other priority populations may include:

- Those living in isolated communities
- Tāmariki & rangatahi
- Older people
- New migrants



Objectives: what we need to focus on



Support economic empowerment to enable social transformation



Grow inter-cultural connection and social cohesion



Support and prioritise whānau + community self-reliance + sustainability



Reduce inequities and barriers to participation

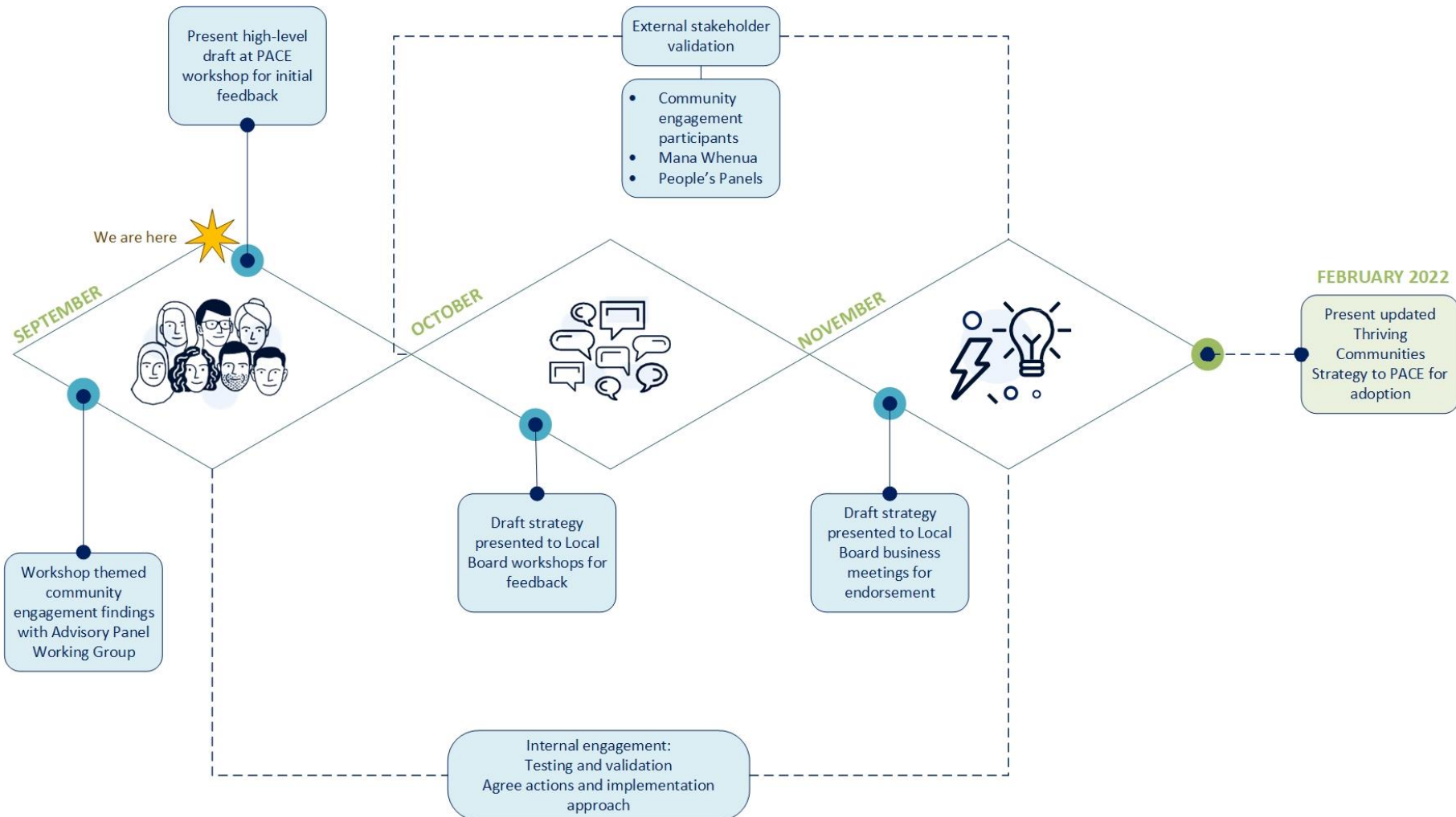


Prioritise and amplify Māori leadership and Māori-led solutions



Support community to take action on our changing climate

Next steps



He Pātai? Contact us

If you have any further feedback, questions or comments, please don't hesitate to contact us by emailing:

thrivingcommunities@aucklandcouncil.govt.nz

Linda Greenalgh

Community and Social Policy + Connected Communities

Linda.Greenalgh@aucklandcouncil.govt.nz

Mackenzie Blucher

Community and Social Policy

Mackenzie.Blucher@aucklandcouncil.govt.nz

Dave Jaggs

Community and Social Policy

Dave.Jaggs@aucklandcouncil.govt.nz