

Le Roys Bush project update

- signage

- tracks

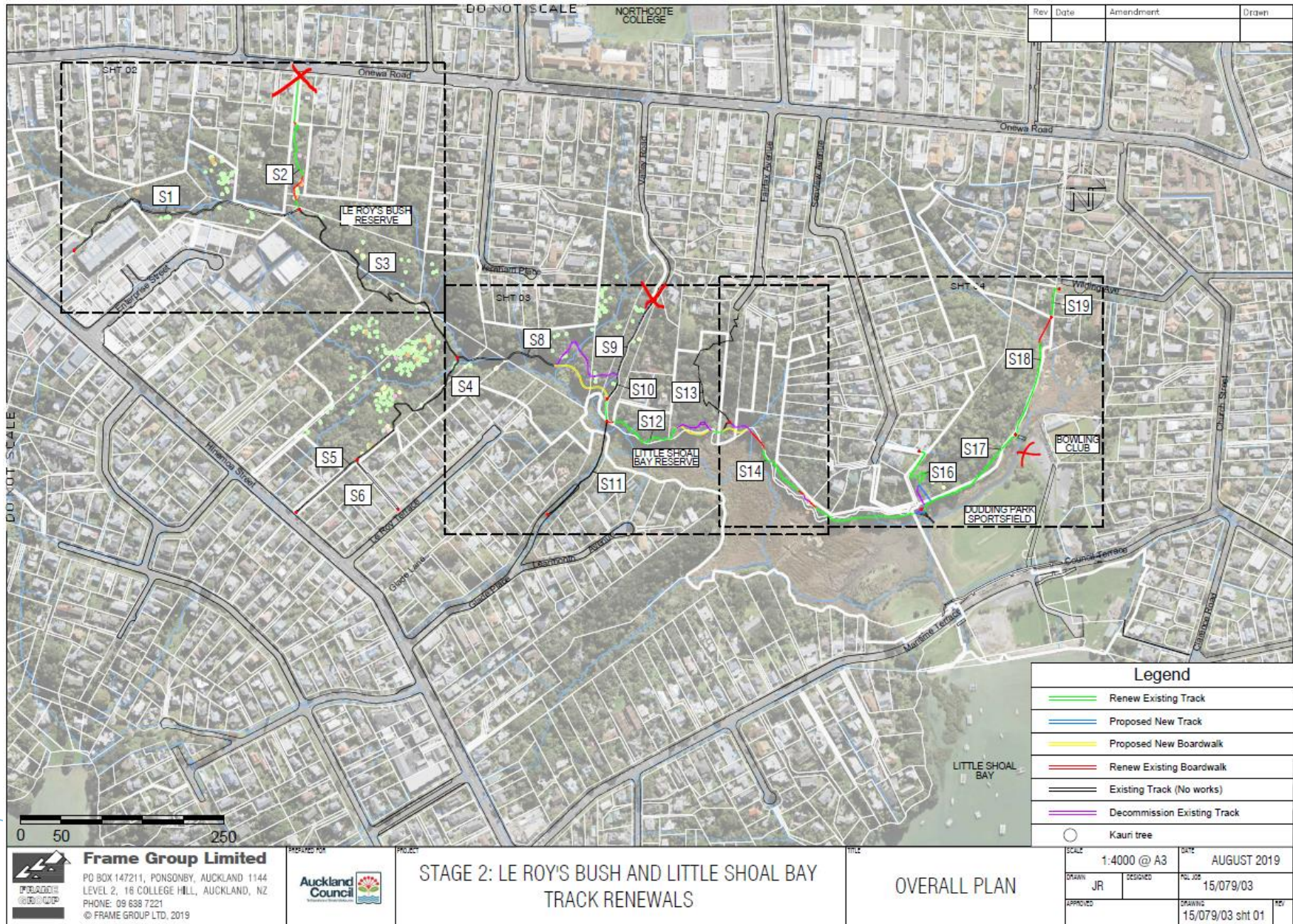
Eskdale Reserve signage update

Workshop 1 June 2021

Julie Crabb – Principal Open Space

Guest: Keith Salmon, Friends of Le Roys/Little Shoal Bay Bush

Le Roys Bush Reserve Plan



Rev	Date	Amendment	Drawn

Legend	
	Renew Existing Track
	Proposed New Track
	Proposed New Boardwalk
	Renew Existing Boardwalk
	Existing Track (No works)
	Decommission Existing Track
	Kauri tree

Frame Group Limited
 PO BOX 147211, PONSONBY, AUCKLAND 1144
 LEVEL 2, 16 COLLEGE HILL, AUCKLAND, NZ
 PHONE: 09 638 7221
 © FRAME GROUP LTD, 2019

Auckland Council

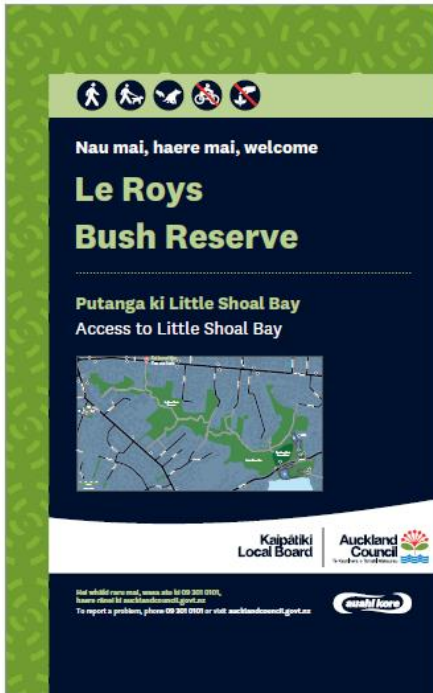
STAGE 2: LE ROY'S BUSH AND LITTLE SHOAL BAY
 TRACK RENEWALS

OVERALL PLAN

SCALE	1:4000 @ A3	DATE	AUGUST 2019
DRAWN	JR	DESIGNED	COL JOS 15/079/03
APPROVED		DRAWING	15/079/03 sht 01

X = location for small plinth signs

Signage types

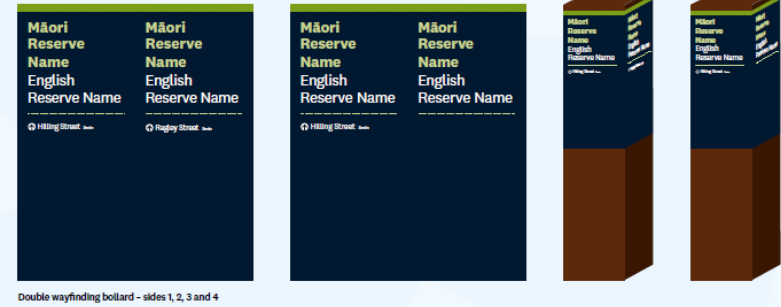


1. Small Plinth - Onewa Rd Entrance (S2), 1070mm x 1700mm_x1



4. Pole Sign - Wilding Ave Entrance (S19), 643mm x 900mm_x1

Pole sign for entrance at S14/17, S16, S19



Double wayfinding bollard - sides 1, 2, 3 and 4

Alternative option to Pole sign: Bollards

Small plinth for main entrances at S2, S9, S17/18

Signage content

Naming

- Direction required on naming all entrances “Le Roys Bush Reserve”
 - Volunteer group has requested this as it should help to elevate confusion with the general public as they usually determine “Little Shoal Bay” to be across the road, near the water
 - Māori name for Le Roy’s Bush – adopting ‘Wai Manawa’

Symbols on signs

- Entrance signs are to welcome people and highlight access to parks. The symbols should focus on the positives, however they can also include important rules, e.g. “no bike” (if that was the agreed rule)



Rules for Le Roys

- Information on ecological, bikes, dogs and kauri die back etc should be on separate signs
- Dogs – bylaw is for ‘on lead’ area
- Bikes – direction required if Le Roys should be “no bikes/e-bikes/scooters” or “bikes”
 - Note: Valley Road to Glade Place is well used by school groups, so bike access for these tracks should be considered
- Kauri Dieback messages can be included on the hygiene stations to declutter entrances
- Information signs should be displayed separately to the entrance signs and can be positioned where people will pause to read them, e.g.



Signage content continued....

Accessibility

- Accessible access can be promoted via the council website and charity organisations etc
 - A new timber platform below the steps, to provide a safe turn around area for wheelchairs, and a sense of destination, is planned for Stage 3
 - The entrance from the Little Shoal Bay carpark to the bridge (next to the bowling club) will be improved by creating a concrete path connection and replacing the chain with a bollard in the next month



- Once all this work is completed, we can look at adding additional information signs and/or symbols to the entrances (we can't do this before we complete the works though)

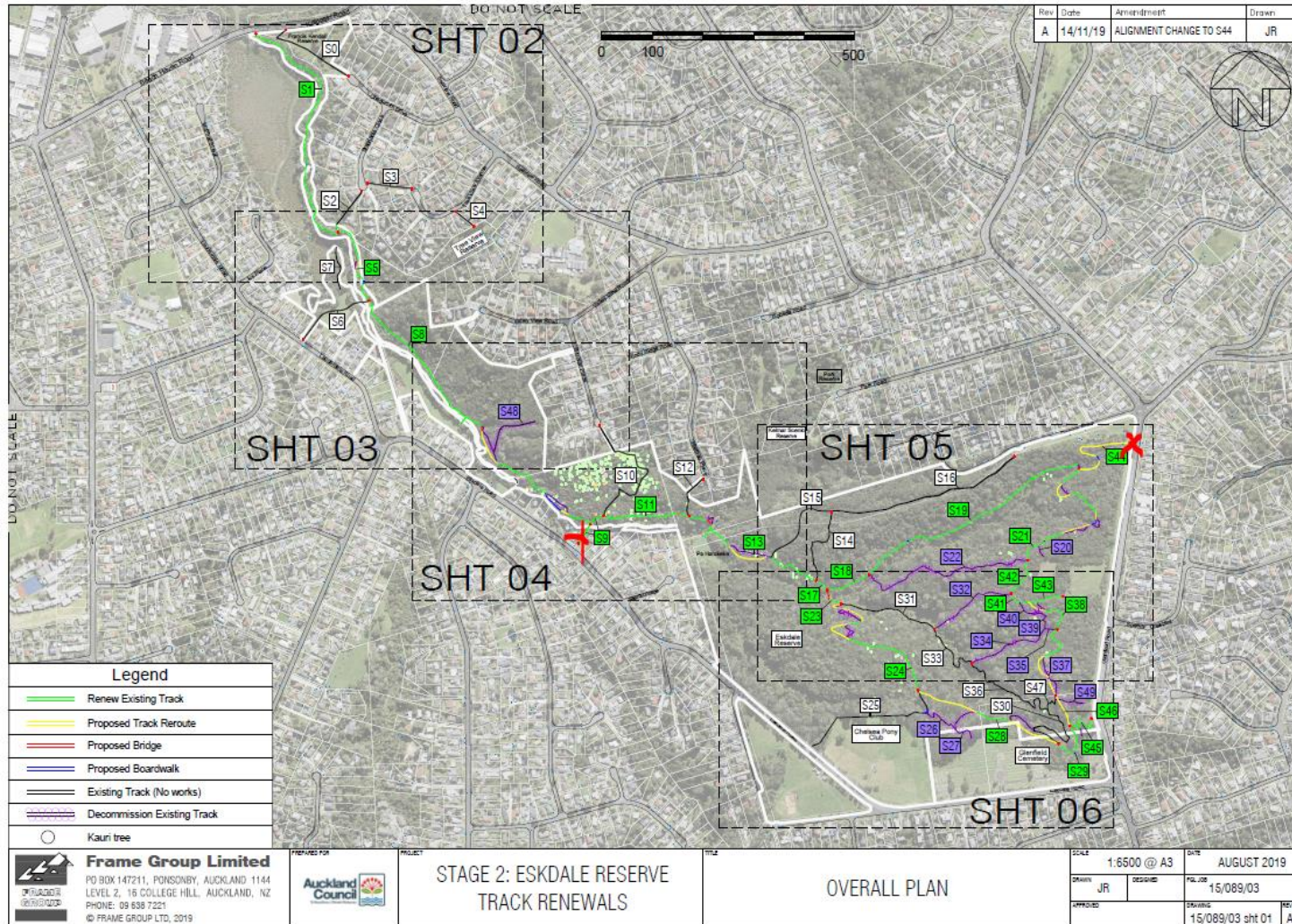
Volunteer recognition

- Branding has advised we can't add the ecological and Le Roys volunteer group info or logo to the entrance signs, but can cover this in separate interpretive or information signs
 - We need to consider how we present information – if it's online then who will manage this info/site?

Le Roys Tracks update

- Stage 2 was completed, and tracks reopened for public use February 2021
 - There is 12 months defects period on the works
- Stage 3: Design and consents are planned for FY22, with physical works planned for FY23
 - Stage 3 includes the remaining feeders and sidetracks not already renewed i.e S4, S9, S11, S13

Eskdale Reserve signage update



- Bylaw is for “dog off lead”, however due to the risk to kauri we’re proposing to include the symbols for “dog on lead”
- Bollard Wayfinding signs will be installed at each intersection
- Bike hygiene stations will be installed at S9 and S44
- - these entrances will have the small plinth with map. Remaining entrances will be Pole signs or bollards

Monarch Park Nature Trails Project

2 June 2021

Catherine Bannister – Project Manager (for Community Facilities)

Purpose

- Present the **developed concept design** for Monarch Park (Hillcrest) nature trails redevelopment project.
- **Take feedback** from Local Board members on the proposed design.

Project background

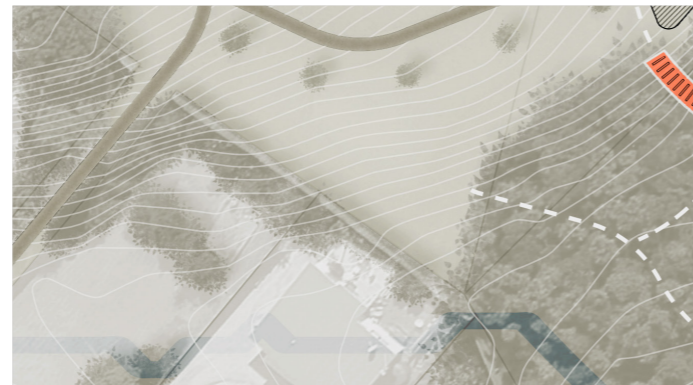
- October 2018: concept design prepared
- November 2018: consultation with the Monarch Park placemaking group (Friends of Monarch Park) and Kaipātiki Local Board
- Funding to progress the project is available for FY21 and FY22
- Project scope includes
 - (1) development of nature trails through the existing vegetation on the northern side of the reserve,
 - (2) enhancement of the existing 'Enchanted Forest', and
 - (3) installation of a naturalised area for Monarch butterflies.

Current status

- ✓ Developed concept design completed April 2021
- ✓ Consultation with community group complete.
- ✓ Consultation with Auckland Council arborist complete.
- ✓ Consultation with Auckland Council Healthy Waters is in progress.

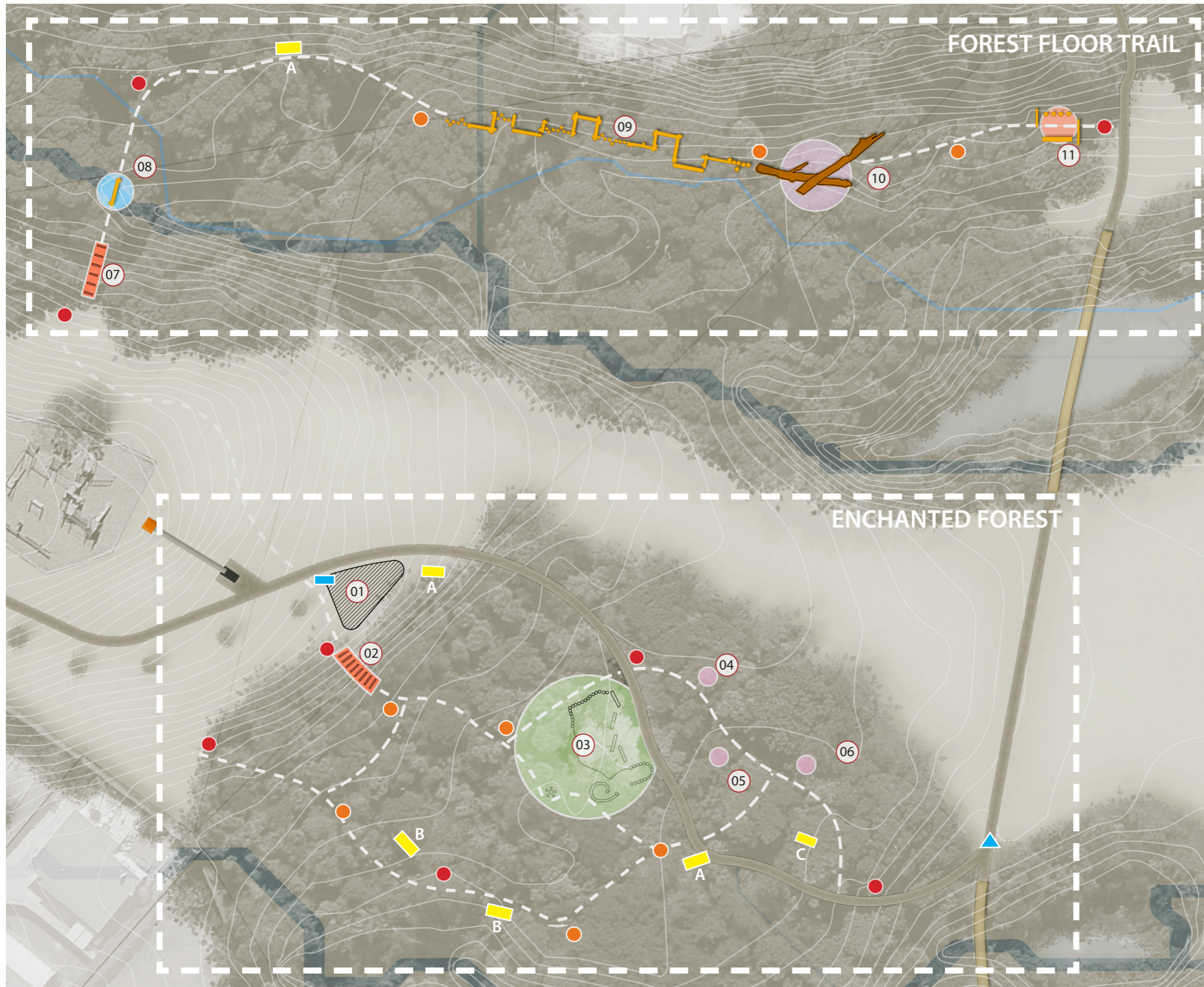
MONARCH PARK

HILLCREST, AUCKLAND



NATURE TRAIL DEVELOPED CONCEPT

May 2021



KEY

Enchanted Forest

- 01. Proposed butterfly meadow (refer pg.04)
- 02. Proposed timber stair with aggregate infill to steep gradient interface
- 03. Refurbish existing features in this area including:
 - Reinstatement of bark surface
 - Surface clean of structures and application of coloured surface coating accent and / or metal decal inserts
 - Native enhancement planting
- 04. 1500mm high teepee frame for children to build huts with collected branches and foliage
- 05. Stockpile stack structure location for children's use in hut/teepee building
- 06. 2400mm high teepee frame for children to build huts with found branches and foliage

Forest Floor Trail

- 07. Proposed timber stair with aggregate infill to steep gradient interface
- 08. Proposed log crossing over narrow watercourse. Remove section of nearby willow to facilitate trail connectivity and improve visibility
- 09. Proposed raised timber trail with balance poles and beams to low lying areas
- 10. Create natural log scramble crossing by clearing superfluous detritus material and modifying existing fallen willow tree to improve access and visibility between entrance and low raised timber trail
- 11. Proposed Gathering node/entrance gateway feature

LEGEND

- 580mm high x 150mm Ø unipole wayfinding marker with top 150mm painted in orange colour
- 800mm high x 150mm Ø unilog wayfinding with top 150mm painted in orange colour
- Auckland Council interpretative butterfly meadow signage location (approx. 514mm x 1600mm)
- ▲ Auckland council interpretive enchanted forest plinth location (approx. 514mm x 1600mm)
- **Proposed Insect Hotel Typologies**
 - A. Butterfly & Bee Apartment
150mm Ø untreated uglies timber log for butterfly to cling on & for leaf cutter bees to reside
 - B. Weta Gallery
150mm x 150mm untreated square timber pile for tree weta and similar critters
 - C. Gecko & Skink Air Bnb
Timber and steel mesh frame infilled with rock & leaf litter for gecko's and skink's

Note: route and path locations estimated based on GIS aerial information and site walkover photo record.
All proposed intervention locations to be discussed and agreed on site with the appointed Arborist





BUTTERFLY & BEES APARTMENT



WETA GALLERY



GECKO & SKINK AIR BnB



TEEPEE & STOCKPILE STACK STRUCTURE



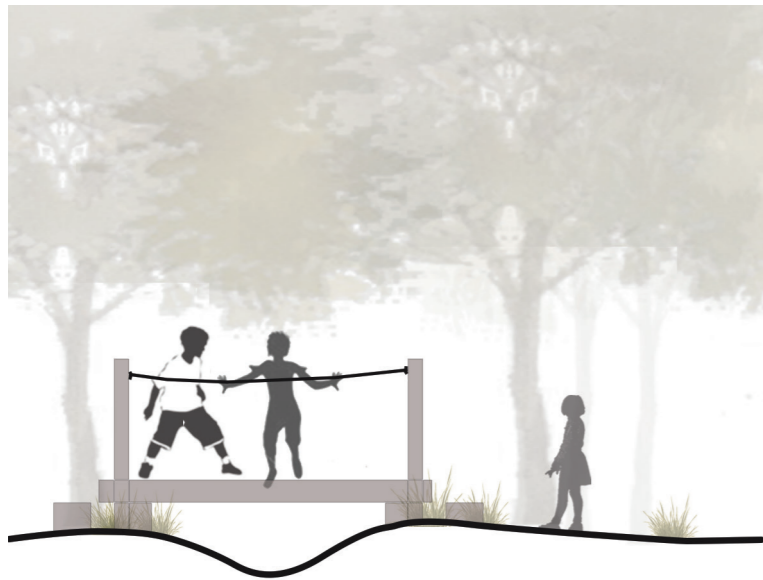
WAYFINDING MARKERS



WAYFINDING INTERPRETIVE SIGNAGE



ELEMENT TRANSECT



LOG CROSSING



RAISED TIMBER TRAIL



GATHERING NODE/ENTRANCE FEATURE



ELEMENT TRANSECT



Rock Rip Rap



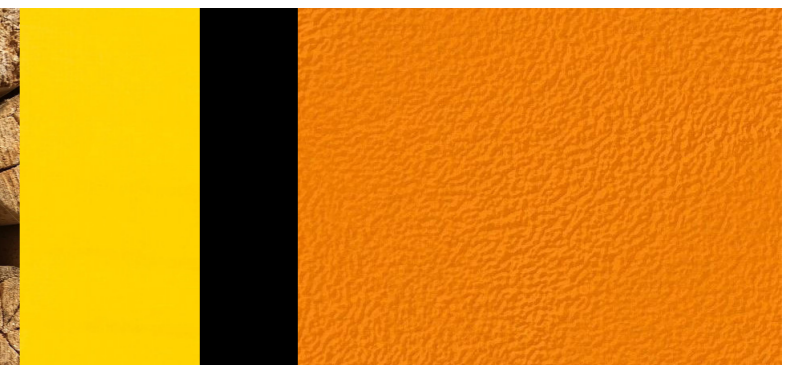
Natural Rope



Natural Timber



Timber Logs



Proposed Colour Scheme



KEY

1. 1.2m wide Compacted Aggregate Path with timber edging
2. 300mm wide Timber Edge
3. Timber Stairs with compacted aggregate infill

LEGEND

- Tall Nectar Shrub Mix
- Low Nectar Shrub Mix
- Butterfly Larval Food Mix
- Butterfly Meadow
- Auckland Council interpretative signage location approx. 514mm x 1600mm)
- Butterfly & Bee Apartment location
- 580mm high x 150mm Ø unipole wayfinding marker with top 150mm painted in orange colour



A. Butterfly Meadow Elevation

LARVAL FOOD MIX



Asclepias
Milkweed



Oxypetalum coeruleum
Tweedie Heavenly Blue



Muehlenbeckia complexa
Pohuehue



Trifolium repens
White Clover



Vicia Sativa
Common Vetch



Urtica incisa
Scrub Nettle

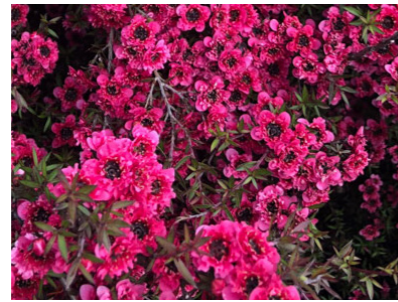


Urtica dioica
Common Nettle

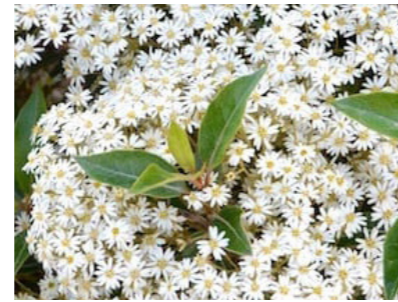
NECTAR SHRUB MIX



Hebe stricta
Koromiko



Leptospermum scoparium
Manuka



Oleria cheesemanii
Daisy bush



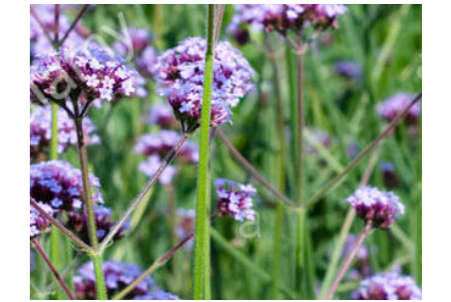
Echinacea purpurea
Purple Coneflower



Osteospermum 'Voltage Yellow'
African daisy



Pimelea prostrata
New Zealand Daphne



Verbena bonariensis
Purpletop Vervain

NATIVE ENHANCEMENT MIX



Salvia farinacea
Mealy Sage



Viburnum tinus 'Eve Price'
Laurustinus



Muehlenbeckia complexa
Pohuehue



Dianella nigra
Turutu



Coprosma robusta
Karamu



Pseudopanax lessonii
Houpara



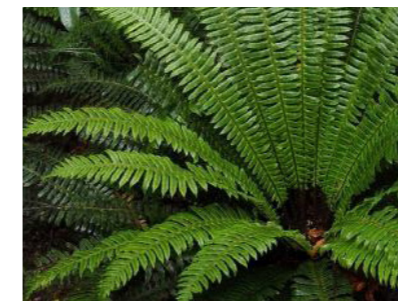
Carex dissita
Purei



Astelia banksii
Wharawhara



Blechnum novae-zelandiae
Kiokio



Blechnum discolor
Crown fern



Cyathea dealbata
Silver fern



Cordyline australis
Ti Kouka

Feedback



Next Steps

- ❖ Complete minor maintenance/ enhancement work to existing 'Enchanted Forest' area
- ❖ Formal approval of the developed concept design at a business meeting (target July 2021)
- ❖ Progress developed concept design to detailed design (target July 2021)
- ❖ Obtain all consents and approvals (August – September 2021)
- ❖ Appoint a contractor to deliver construction of the new nature trails (October 2021)
- ❖ Deliver the physical works (target from November 2021)
- ❖ Further updates to the Local Board will be provided through regular monthly/ quarterly reporting