

Kaipātiki Local Board Workshop Programme

Date of Workshop: Wednesday 3 August 2022
Time: 10.00am
Venue: Boardroom, 90 Bentley Ave, Glenfield and via Microsoft Teams

Time	Workshop Item	Presenter	Governance role	Proposed Outcome(s)
10.00 – 11.25am	Kaipātiki Local Grant Round One 2022/2023	Ann Kuruvilla Grants Advisor, Grants and Incentives	<ul style="list-style-type: none"> Receive update 	<ul style="list-style-type: none"> Review community grant applications
11.25 – 11.30am	Break			
11.30am – 12.30pm	Infrastructure and Environmental Services <ul style="list-style-type: none"> Kaipātiki Local Board Climate Action Plan 	Fran Hayton Low Carbon Specialist, Community Climate Action Team Brandii Stephano Relationship Advisor, Infrastructure and Environmental Services	<ul style="list-style-type: none"> Setting direction 	<ul style="list-style-type: none"> Define board position and feedback
12.30 – 1.15pm	Lunch			
1.15 – 2.15pm	Business Improvement Districts (BIDS) - Birkenhead and Northcote <ul style="list-style-type: none"> Birkenhead Town Centre Business Association Northcote Town Centre Business Association 	Kae Condon Manager, Birkenhead Town Centre Business Association Gary Holmes Manager, Northcote Town Centre Business Association Claire Siddens Principal Advisor (BIDs), Auckland Council Governance	<ul style="list-style-type: none"> Keeping informed 	<ul style="list-style-type: none"> Receive update

2.15 – 3.15pm	Healthy Waters Regionwide Network Discharge Consent Feedback	<p>Nick FitzHerbert Team Leader Relationship Advisory, Infrastructure and Environmental Services</p> <p>Paula Vincent Principal – Planning, Infrastructure and Environmental Services</p> <p>Brandii Stephano Relationship Advisor, Infrastructure and Environmental Services</p>	<ul style="list-style-type: none"> • Setting direction 	<ul style="list-style-type: none"> • Define board position and feedback
------------------	--	--	---	--

Next workshop: Wednesday 10 August 2022

10 August 2022	9.15am	9.50am	Board members time
	10.00am	11.30am	Connected Communities
	11.30am	12.30pm	Parks Sport and Recreation
	12.30pm	1.15pm	Lunch
	1.15pm	2.15pm	TBC
	2.15pm	3.15pm	Infrastructure & Environmental Services
	3.15pm	3.30pm	Break
	3.30pm	4.30pm	TBC

Role of Workshop:

- (a) Workshops do not have decision-making authority.
- (b) Workshops are used to canvass issues, prepare local board members for upcoming decisions and to enable discussion between elected members and staff.
- (c) Workshops are open to the public however, decisions will be made at a formal, public local board business meeting.
- (d) Members are respectfully reminded of their Code of Conduct obligations with respect to conflicts of interest and confidentiality.
- (e) Workshops for groups of local boards can be held giving local boards the chance to work together on common interests or topics.

Kaipātiki Local board Climate Action Plan

Fran Hayton, Low Carbon Specialist
Community Climate Action Team

August 2022



Workshop Purpose

- Provide the board with an update on the climate action plan development to date
- Seek feedback on draft actions summary

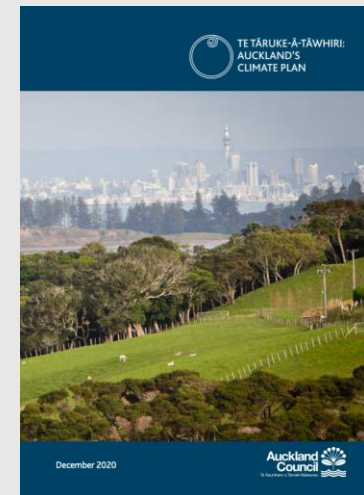


Regional Strategic Context

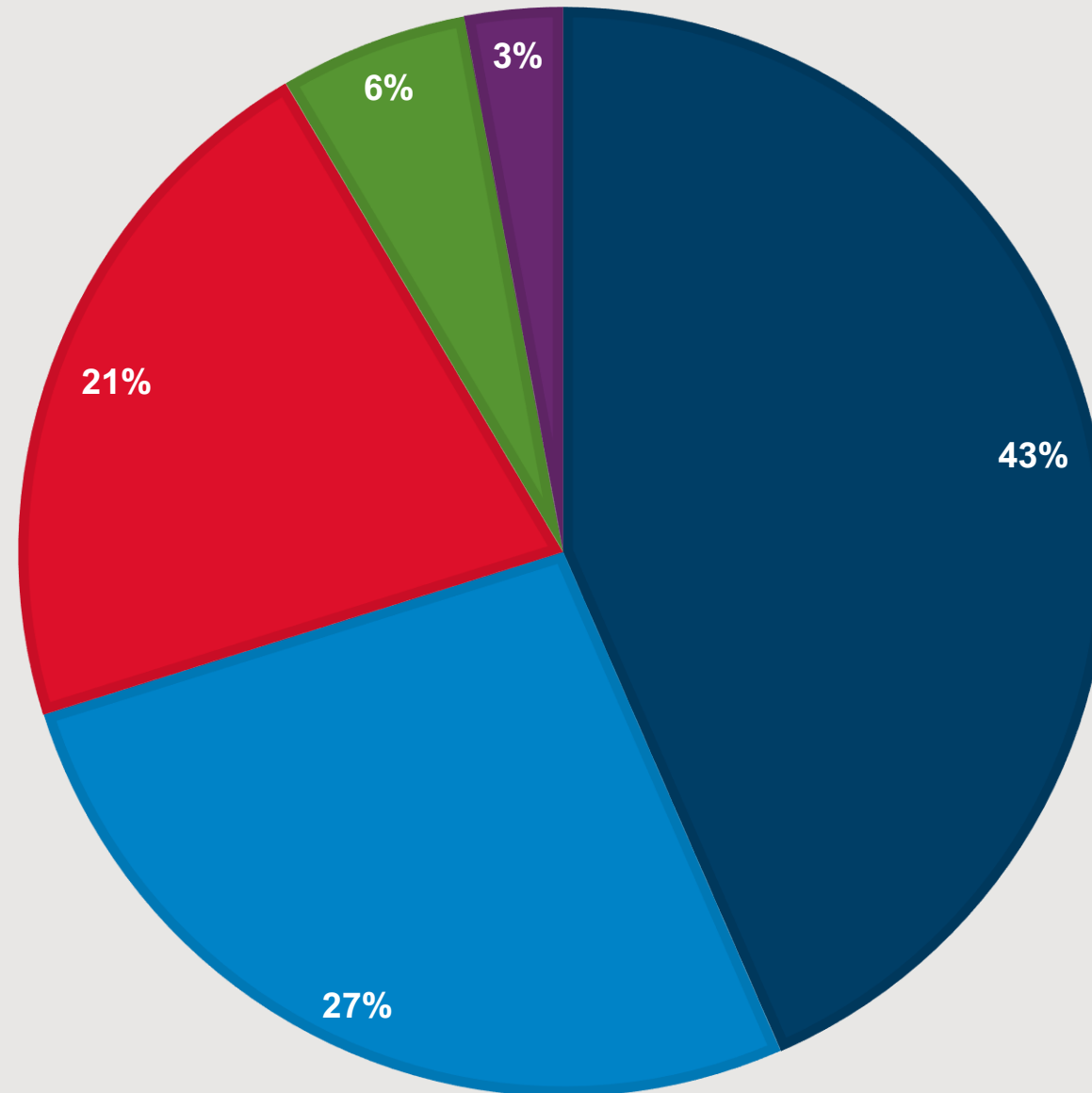
The Auckland Plan, and Te Tāruke-ā-Tāwhiri: Auckland's Climate Plan, lay the foundation for Auckland's transformation into a resilient, zero-carbon community which is actively adapting to the impacts of climate change.

Te Tāruke-ā-Tāwhiri sets our core goals:

- To reduce our greenhouse gas emissions by 50 per cent by 2030 and achieve net-zero emissions by 2050
- To adapt to the impacts of climate change by ensuring we plan for the changes we face under our current emissions pathway



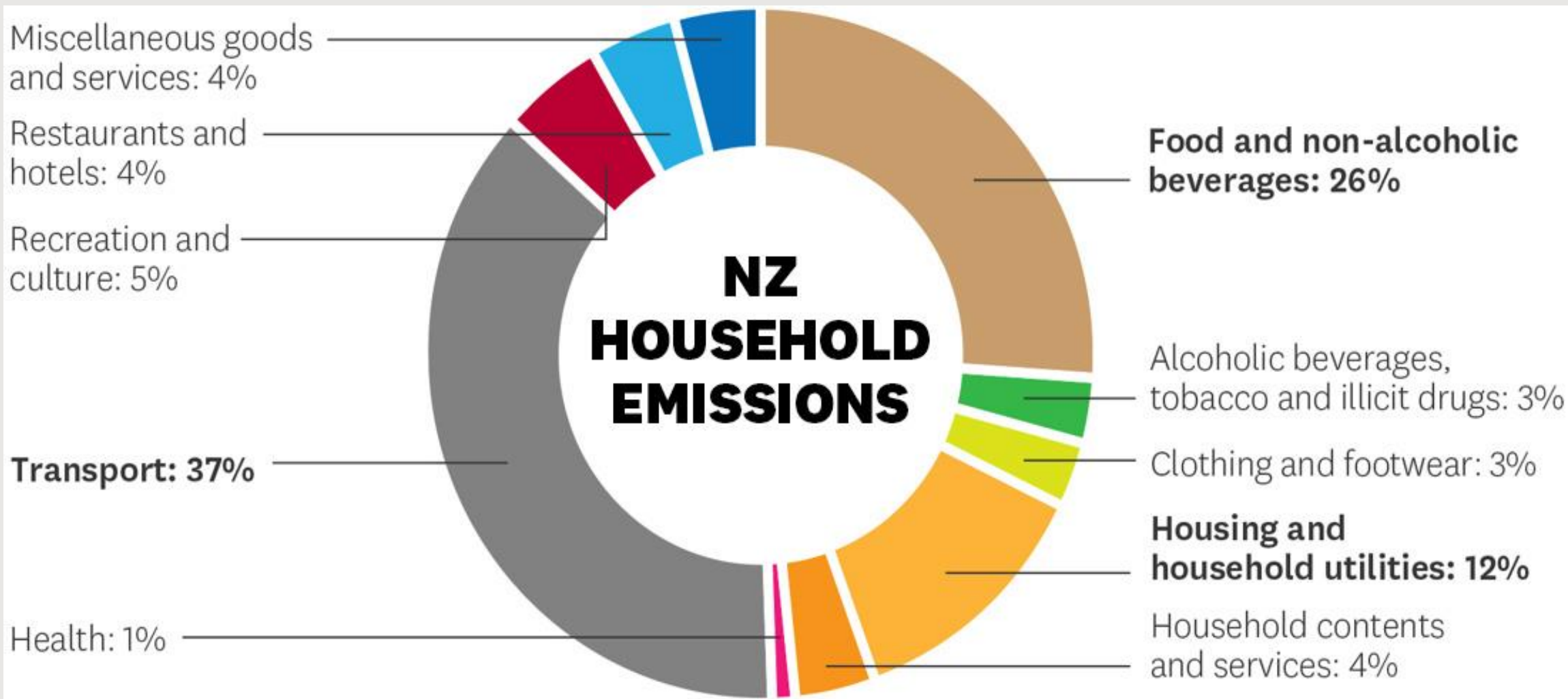
Auckland's production emissions profile



- Transport
- Stationary energy
- Industrial process and product use
- Agriculture
- Waste



Consumption emissions



Action areas



Taiao māori

Natural environment

Oranga taiao, oranga tāngata: a healthy and connected natural environment supports healthy and connected Aucklanders. The mauri (life essence) of Tāmaki Makaurau is restored.



Taiao hanga

Built environment

A low carbon, resilient built environment that promotes healthy, low impact lifestyles.



Ikiiki

Transport

A low carbon, safe transport system that delivers social, economic and health benefits for all.



Ōhanga

Economy

A resilient, low carbon economy, guided by our kaitiaki values, that supports Aucklanders to thrive.



Ngā hapori me te tahatai

Communities and coast

Communities and individuals are prepared for our changing climate and coastline, and carbon footprints of Aucklanders have reduced.



Ngā kai

Food

A low carbon, resilient, local food system that provides all Aucklanders with access to fresh and healthy food.



Te Puāwaitanga ō te Tātai

Intergenerational whakapapa relationships of taiao (nature), whenua (land) and tangata (people) are flourishing. The potential and value of Māori is fully realised. Māori communities are resilient, self-sustaining and prosperous.



Te ngao me te ahumahi

Energy and industry

A clean energy system that supports and provides for a resilient, low carbon Auckland.



Stocktake sample



Kaipātiki Restoration Network - Pest-Free Kaipātiki

The NorthWest Wildlink

Kaipātiki Urban Ngahere

The Clean Up Crew



Kaipātiki Project (multiple)

Kaipātiki Community Facilities Trust

King Tides Project

EcoMatters Healthy Homes on a Budget

Habitat Hobsonville Ecological restoration and pest removal

Kaipātiki Open Space Network Plan 2022-2032



Bike Kaipātiki

Awataha Greenway (Eke Panuku)

Ferry frequency improvements at Northcote & Birkenhead (CATR proposal)

Kaipātiki Connections Network Plan



Fair Food (Food Rescue)

Kaipatiki food forest network

Aotearoa Food Rescue Alliance

Garden to Table



Zero Waste Hub Northcote

Industrial Pollution Prevention Programme (IPPP)

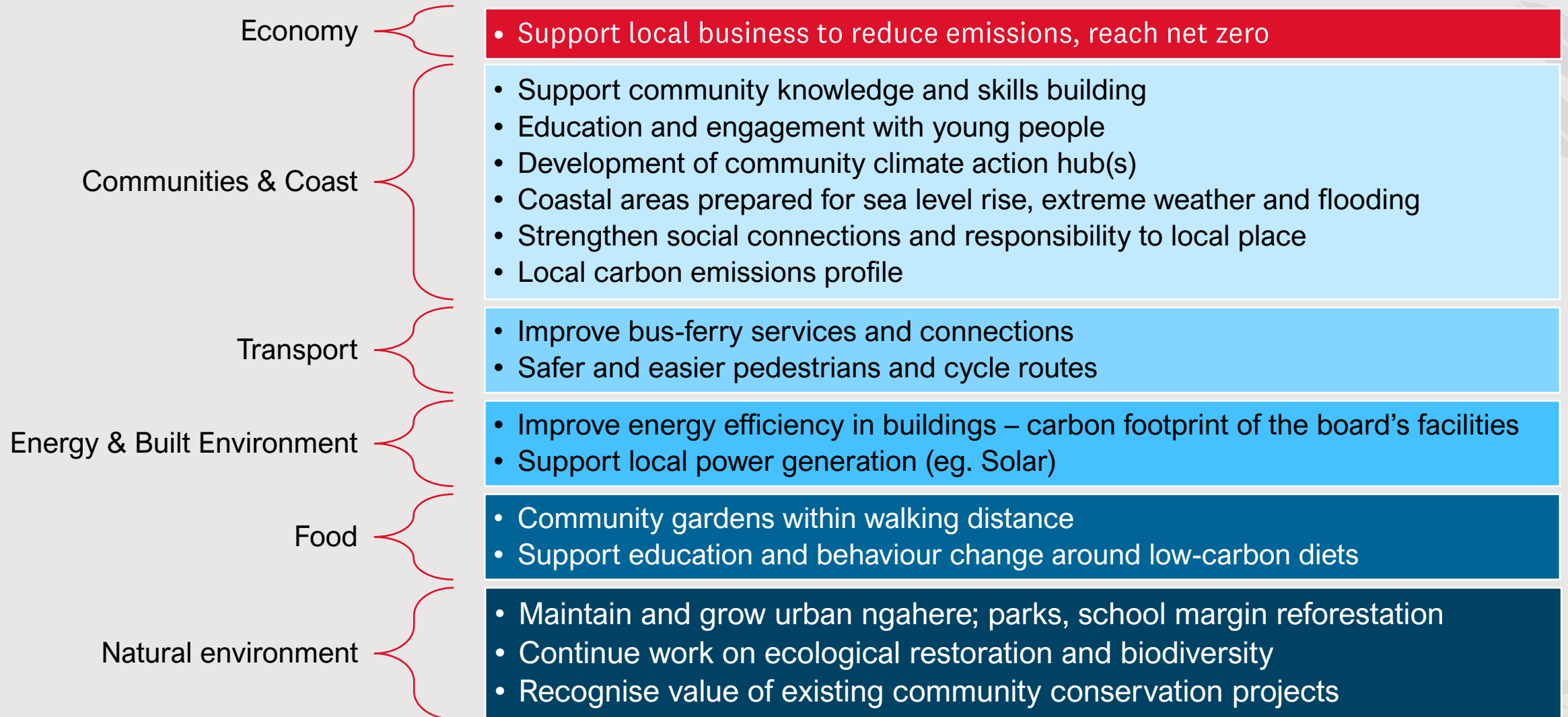
Sustainable Business Network

Climate Action Toolkit (SBN + MBIE)

The ReCreators



Kaipātiki community and local board workshop feedback



Summary of draft actions in plan...





Natural Environment

- Bush sequesters carbon
- Kaipātiki has high tree coverage, but variations across land tenure present opportunities:
 - 64% in public open space (up 1% since 2013)
 - 25% on private land (the same as 2013)
 - 12% on roadsides (up 2% since 2013).



Natural Environment Actions



Protect existing Ngahere

- Continue to support community led pest plant and animal control on public and private land and measures to minimise spread of kauri dieback
- Advocate for mechanisms to protect trees on private land

Increase tree cover in areas of low coverage

- Develop a programme of funded tree plantings from the planting opportunities set out in the Kaipātiki Urban Ngahere Action Plan 2020 *
- Offer grants and other incentives to support tree planting on private land
- Plant large specimen trees for shade as recommended in Play and Sunsmart Assessment

Enhance existing open space

- Implement high priority projects from Open Space Network Plan 2022-2032
- Provide opportunities for shared use of public spaces in leases for community facilities

Enhance community understanding of the role of trees in climate change mitigation

- Use planting days and weeding bees as educational opportunity for residents and schools to learn about climate issues we face and available solutions





Built Environment

- 26.7% of Auckland's emissions are from stationary energy
- Energy consumption in buildings from electricity, natural gas and energy use in manufacturing and construction.
- Embodied carbon – sum of all the carbon in materials and products that go into the building.
- Operational carbon – carbon emitted through use of energy for heating, lighting, cooling, ventilation and water systems.



Built Environment Actions



All new buildings operate at net zero carbon by 2030 and all existing at net zero by 2050

- Support quality proposals for new medium and high-density development, and engage with local residents to explain rationale
- Advocate for reduction of embodied and operational carbon in renovations and new developments consulted on

Waste minimisation

- Include waste min targets in contracts for community renewals
 - 75% diversion from landfill – construction and demolition.
 - 40% operational waste by 2040.

Reduce carbon emissions from community facilities by 50% by 2030 *

- Assess utilisation of community facilities. Fit for purpose upgrades or divest.
- Reduce carbon in Central Northcote Community Hub design and build
- Natural gas boiler replaced with heat pump at Glenfield and Birkenhead Pool and Leisure Centres by 2025 (Regionally funded)
- Building management systems upgrades at pools by 2027
- Consider installing solar on facilities with significant solar potential:
 - Pools
 - Local board office / library





- 43.3% of Auckland emissions come from transport
- 88.6% of this is from road transport
- 68.8% of people in Kaipātiki get to work by car
- Getting people out of private cars and using public transport or active transport modes is a powerful carbon reducer



Transport Actions



Advocate for and champion low carbon transport connections within Kaipātiki and to wider Auckland

- Advocate to AT for delivery of public transport projects in Regional Land Transport Plan
- Advocate for faster electrification of ferries and buses
- Advocate for cheaper ferry and bus fares and higher frequency of services
- Support and champion policy enabling low carbon travel, e.g. AT Parking Strategy

Improve local infrastructure for active travel

- Champion opportunities for active travel within forthcoming Connections Network Plan update *
- Identify active travel projects that could be funded through local board transport capital
- **Better local bus services to Northern Busway stations**

Support community action on sustainable transport

- Lead by example – use PT and active transport – talk and post about it
- Support targeted behaviour change programmes encouraging modal shift
- Update grants policy to require low carbon transport at events





- 21.3 % of Auckland's emissions are from industrial processes and produce use
- This sector consists mostly of non-energy related GHG from industrial processes, which in Auckland are mainly steel production. GHG emissions from industrial product use are mainly from HFCs and PFCs used as refrigerants in air conditioning units and refrigerators.
- Over 9,600 businesses in Kaipātiki
- Huge potential to measure and reduce emissions through local businesses



Economy Actions



Business decarbonisation and business continuity *

- Host a programme with Sustainable Business Network, Birkenhead Town Centre Assn, Northcote BID and Wairau Businesses to support local businesses in
 - Understanding climate change
 - Preparing to measure and reduce emissions
 - Developing risk management and continuity plans.

Circular economy

- Support community organisations working to create a circular economy, such as Zero Waste Hub Northcote, the ReCreators, Fair Food, Repair Cafes.

Energy and Industry Actions



Renewable energy generation

- Govt advocacy

Decentralised renewable energy

- Supporting community-led initiatives

Reduction in natural gas emissions

- Supporting programmes targeting uptake of heat pump and water space heating

Reduction in process heat, industrial process and refrigerant emissions

- Work with businesses and EECA





- Food and non-alcoholic beverages make up 26% of Aucklanders carbon emissions
- Second only to transport at 37%
- More sustainable food choices needed
- Reduce emissions through regenerative, sustainable food system
- Production, distribution, processing and disposal



Food Actions

Food waste composting

- Support sharing of surplus or waste food through network of charities and community groups
- Kerbside compost collection for households, pilot town centre compost for businesses
- Community facility composting
- Promote Love Food Hate Waste Fund, supplement with grants for local food waste prevention projects

Support and enable residents to make sustainable food choices

- Lead by example, choosing plant based catering at events and meetings
- Expand the business awards to include a sustainable food category for businesses
- Support Zero Carbon Food Challenge as part of EcoFest
- Encourage events, such as markets to include sustainable food choices

Increase ability of residents to enjoy seasonal and locally produced food with a low carbon footprint

- Map areas available for urban agriculture
- Support community-led low carbon food initiatives – gardens – Naturalisation Assessment
- Subsidise rain water tanks for allow food production in drought





Te Puāwaitanga ō Te Tātai

Te Tāruke-ā-Tāwhiri goal

- intergenerational whakapapa relationships of taiao (natural resources), whenua (land), tāngata (people) are flourishing
- The potential and value of Māori is fully realised
- Māori communities are resilient, self-sustaining and prosperous.

Seeking advice from Māori specialists on how the board can best support this topic area





Communities and Coast

Increase community understanding of climate change

- Climate Activator to support community to implement local climate projects in partnership with local stakeholders *

Strengthen community resilience

- Disaster preparedness workshops
- Support networks that strengthen community connections (Network North, Kaipātiki Community Facilities Trust, Youth Voice)

Adapt to coastal change and flooding

- Inform property owners and occupiers of climate change hazards, particularly within known vulnerability hotspots
- Shoreline Adaptation Plan from Northcote to Beach Haven
- Support implementation of Little Shoal Bay/Wai Manawa shoreline adaptation



Flagship Projects (highlighted with *)



Communities and coast

Climate Activator to support community to implement local climate projects in partnership with local stakeholders



Built environment

Reduce carbon emissions from community facilities by 50% by 2030



Transport

Champion opportunities for active travel within forthcoming Connections Network Plan update



Economy

Business decarbonisation and business continuity



Natural environment

Develop a programme of funded tree plantings from the planting opportunities set out in the Kaipātiki Urban Ngahere Action Plan 2020



Process + Timing



Mana whenua engaged through I&ES hui with kaitiaki reps





Discussion

- Feedback on Climate Action Plan goals, actions and flagship projects
- Timeframe for review of full draft Climate Action Plan and plan adoption
 - Draft plan provided to board members for review on 15 August with comments due 22 August 2022
 - Final Climate Action plan presented at the 21 September 2022 business meeting.



Healthy Waters Regionwide Stormwater Network Discharge Consent

Key tool in the management and integration
of Auckland's stormwater

Six Yearly Review 2022

July 2022

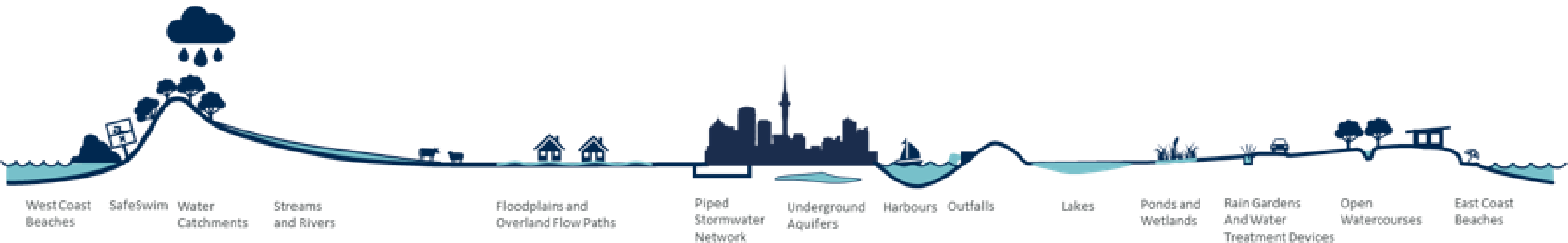


Regionwide Network Discharge Consent

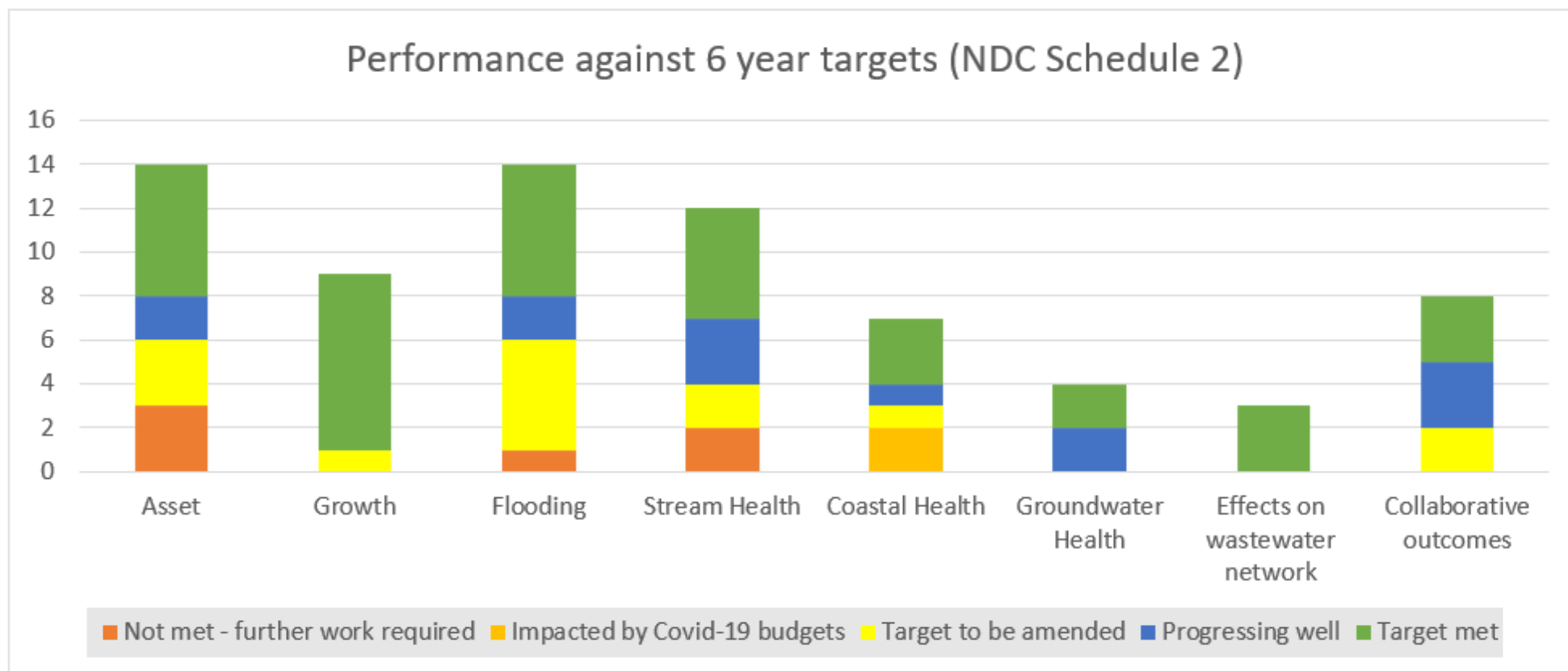
Regionwide consent - authorises the diversion and discharge of stormwater from the public stormwater network within existing and future urban areas.

Key tool in the management and integration of Auckland's stormwater

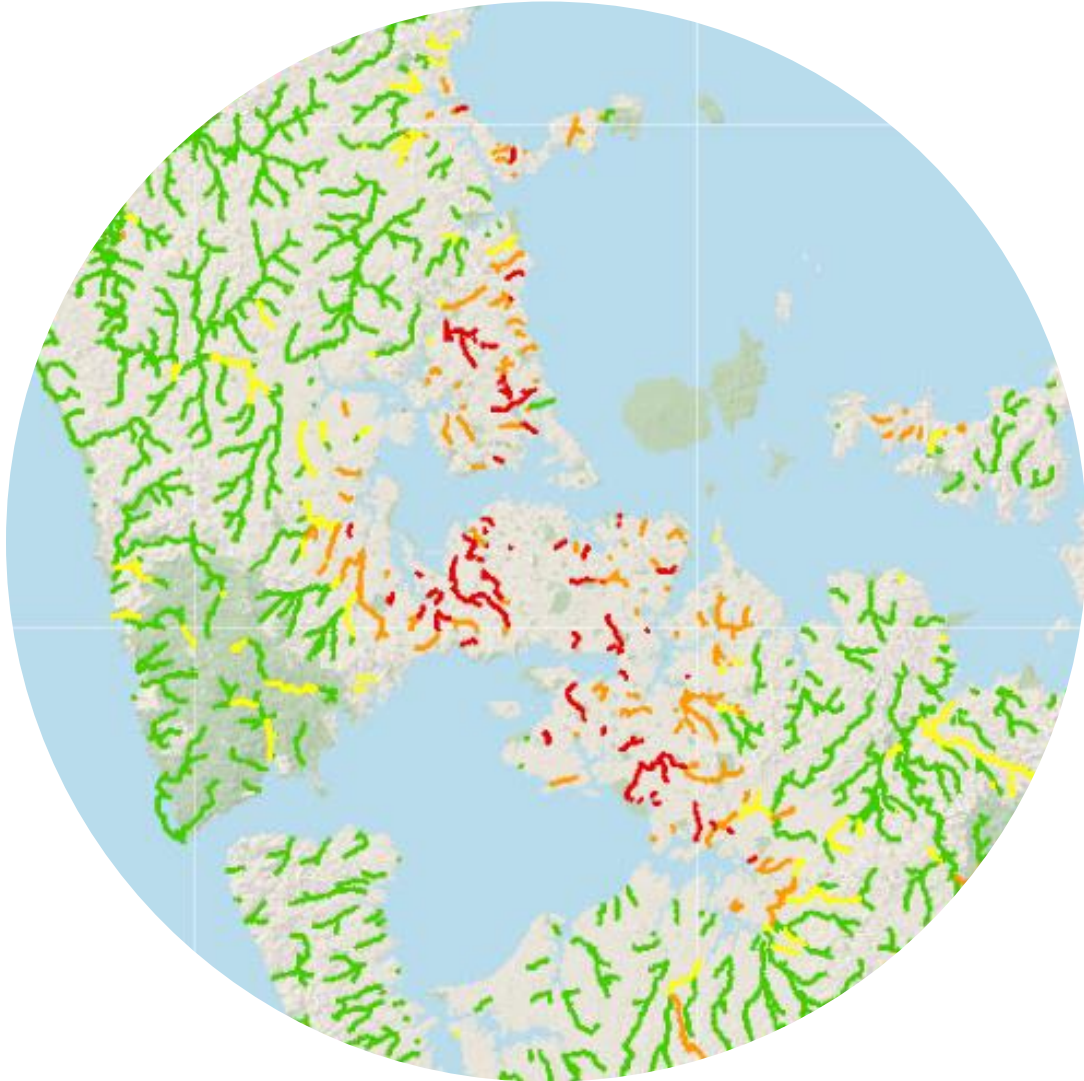
Review every 6 years to stay up to date



6-yearly review - Performance



Monitoring and Assessment

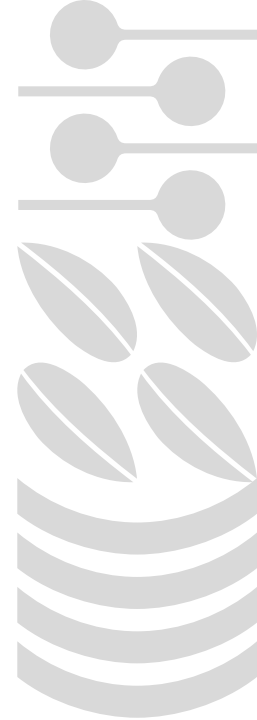


- Too early to see influence of network discharge consent
- State of the Environment and Freshwater management tool model both show that water quality is degraded in urban areas
- Many water improvement programs in place (quality and quantity)
- More assessment is required



Growth

- Introduced new processes and requirements for how stormwater must be managed by others as part of new development or redevelopment
- Challenges for the implementation of water sensitive design and achieving good quality stormwater assets
- Increasing intensification in brownfield areas and new greenfield development



Future challenges and opportunities

- Three Waters reform
- Increasing urban intensification
- Future water quality limits
- Climate change



Recommendations from the Review

Minor changes to network discharge consent targets

Input to programmed changes to Auckland Unitary Plan in 2024

Additional monitoring and assessment

Improvements to growth related approval processes

Reconsideration of stormwater management approach in brownfield areas

Provision of additional guidance

Improving working meaningfully with mana whenua and marae

Continue with flood hazard and asset management programmes

Future changes to network discharge consent following reforms



Feedback from Local Boards

Staff are seeking feedback from local boards on:

- Healthy Waters' assessment of the performance against the targets in the network discharge consent
- views on the recommendations from the review
- the experience of stormwater management in your area.

