

Kaipātiki Local Board Workshop Programme

Date of Workshop: Wednesday 2 March 2022
Time: 11.00am
Venue: via Microsoft Teams
Present:
Apologies: Ann Hartley

Time	Workshop Item	Presenter	Governance role	Proposed Outcome(s)
11.00am – 12.30pm	Wai Manawa / Little Shoal Bay Mini Shoreline Adaptation Plan 2022	<p>Tracy Howe Principal Natural Hazards Specialist, Resilient Land and Coast</p> <p>Nicki Williams Wai Manawa / LSB Mini SAP Facilitator, Mitchell Daysh Limited</p> <p>Sarah Jones Manager Area Operations – Devonport-Takapuna and Kaipātiki, Community Facilities</p> <p>Richard Reinen-Hamil Technical Director - Coastal Engineer, Tonkin & Talyor</p> <p>Josie Robinson GIS Specialist, Tonkin & Taylor</p>	<ul style="list-style-type: none"> Setting direction 	<ul style="list-style-type: none"> Define board position and feedback
12.30 – 1.15pm	Lunch			

1.15 – 2.15pm	<p>Business Improvement Districts - Operating Business Associations</p> <ul style="list-style-type: none"> Northcote Town Centre Business Association Birkenhead Town Centre Business Association 	<p>Gill Plume Senior BID Advisor, CCO/External Partnerships</p> <p>Gary Holmes Manager, Northcote Town Centre Business Association</p> <p>Kae Condon Manager, Birkenhead Town Centre Business Association</p>	<ul style="list-style-type: none"> Keeping informed 	<ul style="list-style-type: none"> Receive update
2.15 – 3.15pm	<p>Auckland Transport - Activities in the Road Corridor Bylaw</p>	<p>Marilyn Nicholls Elected Member Relationship Manager, Auckland Transport</p> <p>Shane Ingle Auckland Transport</p> <p>Andrew McGill Head of Integrated Network Planning, Auckland Transport</p>	<ul style="list-style-type: none"> Keeping informed 	<ul style="list-style-type: none"> Receive update

Next workshop: Wednesday 9 March 2022

9 March 2022	9.15am	9.50am	Board members time
			Connected Communities - Welcoming Communities Scoping Project
	10.00am	11.30am	
	11.30am	11.45am	Break
	11.45am	1.30pm	Plans & Places - Kaipatiki Local Parks Management Plan
	1.30pm	2.15pm	Lunch

	2.15pm	3.15pm	Infrastructure and Environmental Services
	3.15pm	3.30pm	Break
	3.30pm	4.00pm	Auckland Transport: Parking Strategy Refresh
	4.30pm	5.00pm	FIFA Women's World Cup 2023

Role of Workshop:

- (a) Workshops do not have decision-making authority.
- (b) Workshops are used to canvass issues, prepare local board members for upcoming decisions and to enable discussion between elected members and staff.
- (c) Workshops are open to the public however, decisions will be made at a formal, public local board business meeting.
- (d) Members are respectfully reminded of their Code of Conduct obligations with respect to conflicts of interest and confidentiality.
- (e) Workshops for groups of local boards can be held giving local boards the chance to work together on common interests or topics.

Wai Manawa / Little Shoal Bay Mini Shoreline Adaptation Plan

Kaipātiki Local Board Workshop 1

2022

SAP

Workshop Outline

Introductions

Project update and discussion

Format

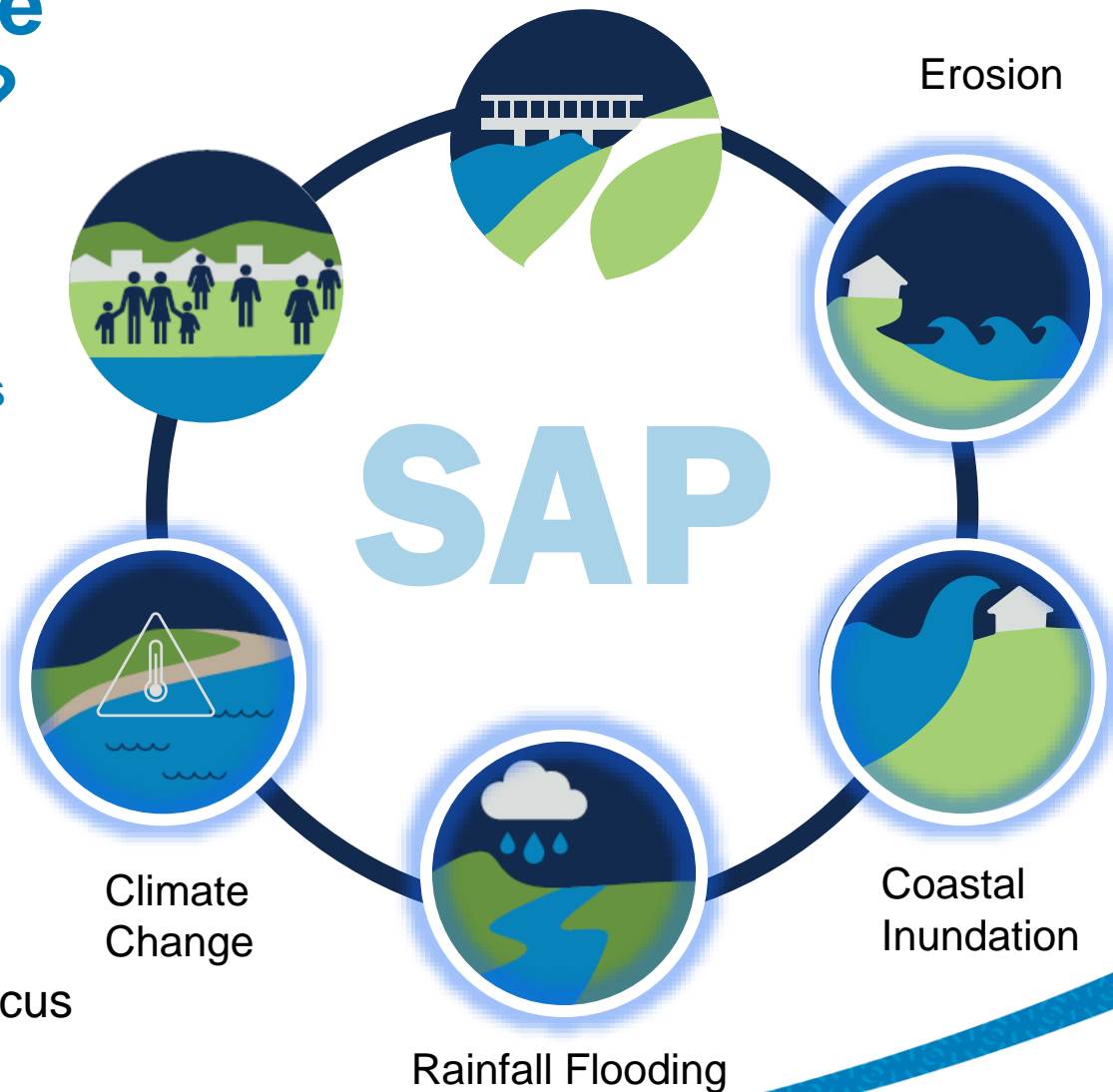
- Background
- Little Shoal Bay Hazards
- Community Survey Feedback
- Little Shoal Bay Community Objectives
- Mural Development
- Discussion / Questions
- Next Steps



What are Shoreline Adaptation Plans?

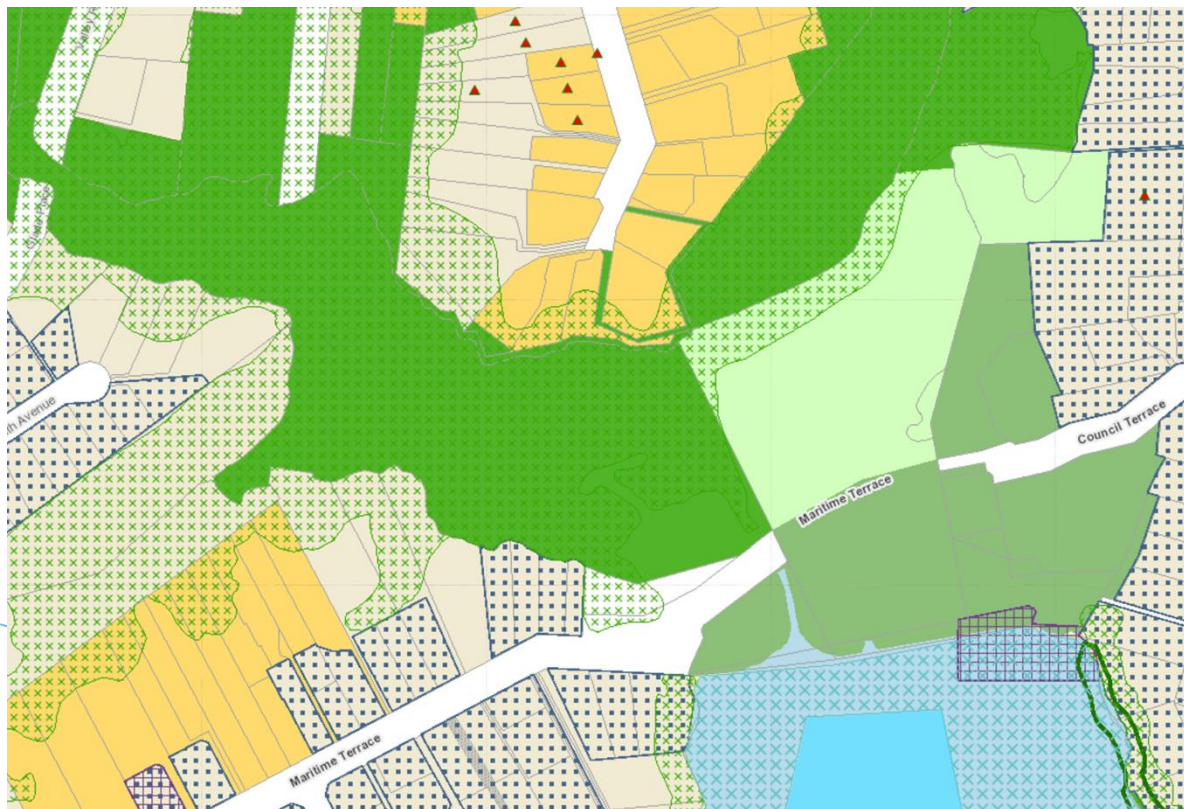
An adaptive plan that informs the long-term management of **Council-owned land and assets** on the coast and within the reserve, taking into account the impacts of **coastal hazards** and **climate change** and the values of the **local community** and **mana whenua**.

Mini Shoreline Adaptation Plans focus on a **single coastal reserve area**.



Background and Policy Direction

- New Zealand Coastal Policy Statement
- National Policy Statement on Freshwater Management 2020 – Te Mana o te Wai
- Auckland Unitary Plan - Significant Ecological Overlay – terrestrial and marine
- Coastal Management Framework



Unitary Plan Zones

- Open Space - Conservation Zone
- Open Space - Informal Recreation Zone
- Open Space - Sport and Active Recreation Zone
- Coastal - General Coastal Marine Zone [rcp]
- Coastal - Mooring Zone [rcp]

Unitary Plan Management Layers

Significant Ecological Areas Overlay

- Terrestrial [rp/dp]
- Marine 1 [rcp]

Historic Heritage Overlay Extent of Place [rcp/dp]

Guiding Principles from Mana Whenua

Shoreline Adaptation Plans are designed in the **spirit of partnership** with mana whenua.



Guiding principles from mana whenua:

- Accept reversal of infrastructure to rectify hazard issues
- Naturalise, let nature take its course.
- Protect koiora (biodiversity) and traditional mahinga kai (fish stocks, kaimoana)

We are engaging with **local iwi**.

Community Input



Webinars

Surveys

Workshops

The Mini Shoreline Adaptation Plan will include workshops with the local community.

To learn more visit:

www.akhaveyoursay.aucklandcouncil.govt.nz/little-shoal-bay

Previous Consultation

There have been many previous community engagements related to this reserve.

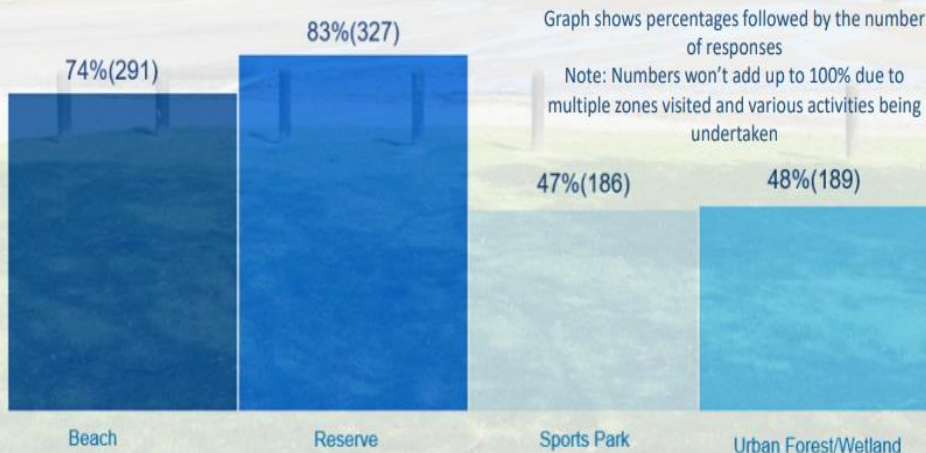
Interceptor survey results for areas visited at Little Shoal Bay Reserve

- 83 % visited the reserve area
- 74% visited the beach area
- 47% visited the sports park area
- 48% visited urban forest/wetland

Current plans for Little Shoal Bay:

- Reserve Management Plan for Little Shoal Bay and Le Roys Bush (1999)
- Little Shoal Bay Stormwater Catchment Management Plan (2013)
- Kauri dieback recreational assessment: Little Shoal Bay Reserve, 2018 (KLB AC)
- Little Shoal Bay Reserve, 2020 (KLB AC)
- Little Shoal Bay Reserve Services Assessment, 2020 (KLB AC)

We've compiled that information into key objectives for discussion.



Community Workshop Outcomes

- Agreeing key community values
- Agree priority areas
- Confirm objectives
- Representing the interests of the community
- Bringing local knowledge
- Working together



Increasing Risk

Key areas of risk are due to storm surge inundation, and water depths will increase with increased sea level rise

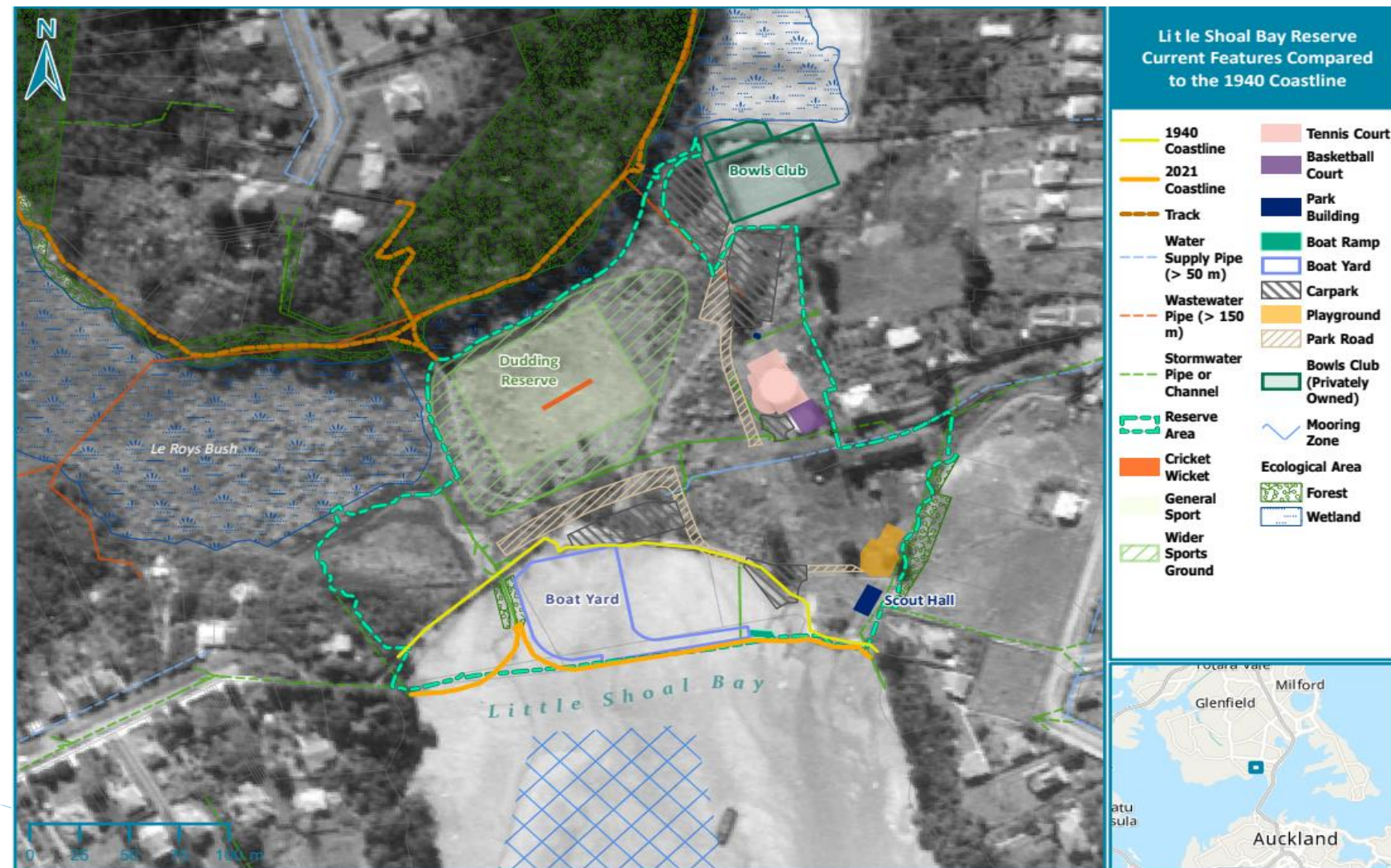
Risk will **increase over time** due to climate change, and eventually, we'll reach a **trigger**.

A trigger is a point where the risk is **no longer acceptable**.

When we reach a trigger, we need to **change strategies**.

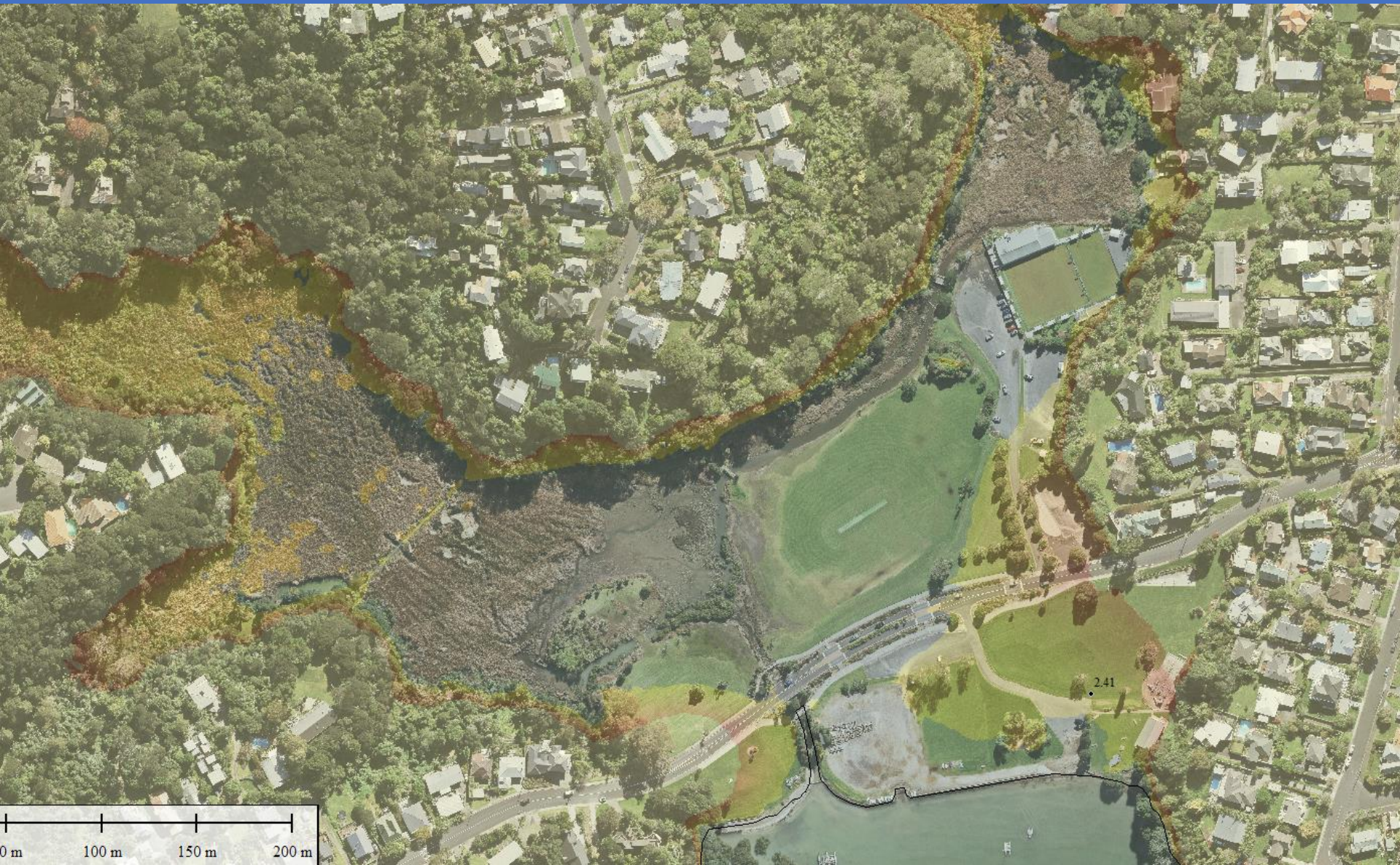


Wai Manawa / Little Shoal Bay Public Assets



To learn more visit: www.akhaveyoursay.aucklandcouncil.govt.nz/little-shoal-bay

Inundation at Highest Astronomic Tide (3.6 m CD), plus 0.5 m Sea level rise



Flooding at Little Shoal Bay



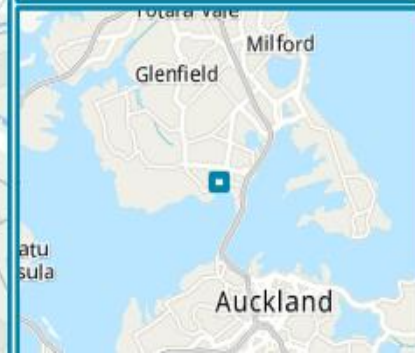
Inundation at Highest Astronomic Tide (3.6 m CD), plus 1.0 m Sea level rise



Little Shoal Bay Reserve Exposure to Long Term Coastal Inundation

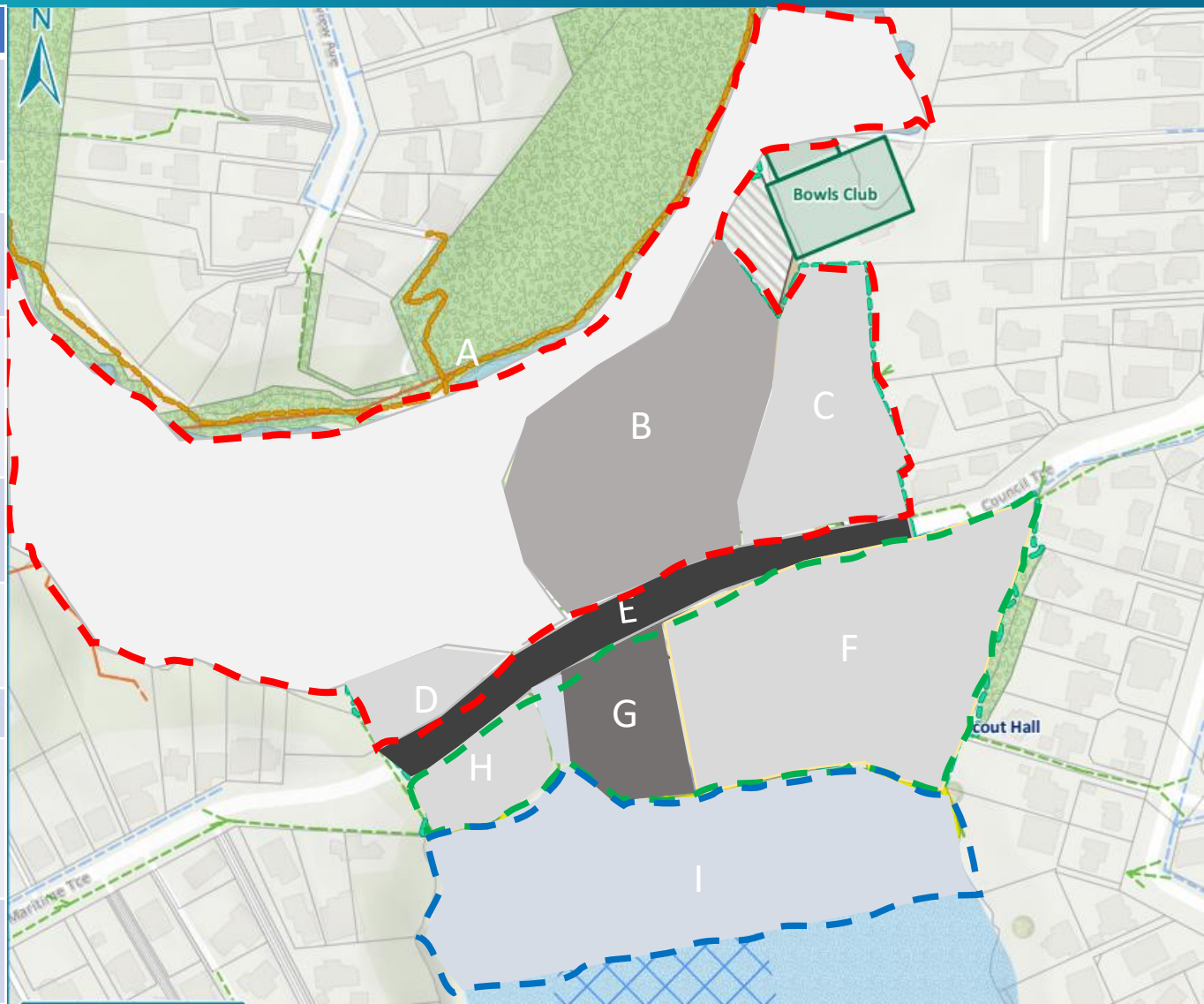


- Track
 - Seawall
 - Water
 - - - Supply Pipe (> 50 m)
 - - - Wastewater Pipe (> 150 m)
 - - - Stormwater Pipe or Channel
 - - - Reserve Area
 - Cricket Wicket
 - General Sport
 - Wider Sports Ground
 - Tennis Court
 - Basketball Court
 - Park Building
 - Boat Ramp
 - Boat Yard
 - Carpark
 - Playground
 - Park Road
 - Bows Club (Privately Owned)
 - X Mooring Zone
 - Ecological Area
 - Forest
 - Wetland
 - 1%AEP storm surge + 1m sea level rise
- | Depth (m) | |
|-----------|------------|
| | 0 - 0.15 |
| | 0.15 - 0.5 |
| | 0.5 - 1 |
| | 1 - 2 |
| | > 2 |



Area break down

Cell	Unit
North of road	A Le Roys Bush and environs'
	B Cricket pitch
	C Tennis/Basketball and parking
	D Maritime Terrace abutment
Road reserve	E Road reserve
South of road	F Beach front reserve
	G Boat Yard
	H Maritime Terrace abutment
Foreshore (CMA)	I Foreshore



Objectives

Adaptive strategies need to **incorporate the values** of the local community and **meet the requirements** of assets owners and infrastructure providers.

To make good decisions, we need **clear objectives**.

Examples:



Reduce flooding where possible.

The local community remains intact and able to access and use the coast.

Reduce exposure to hazards where possible.

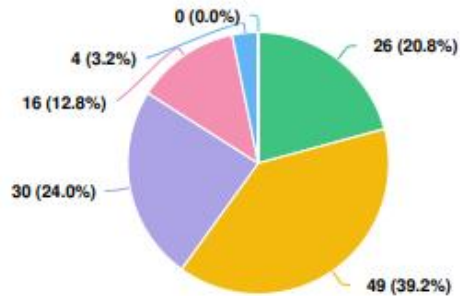
Wai Manawa / Little Shoal Bay
Mini SAP objectives are
developed with:

- mana whenua
- technical experts
- infrastructure providers
- the community

Community Feedback – Online Survey

126 Responses
13 Questions Submitted

Q2 How often do you visit Wai Manawa/Little Shoal Bay?



Question options

- Every day or most days
- Once or twice a week
- Once or twice a month
- Less than once a month
- Other, please specify:
- Never



To learn more visit:

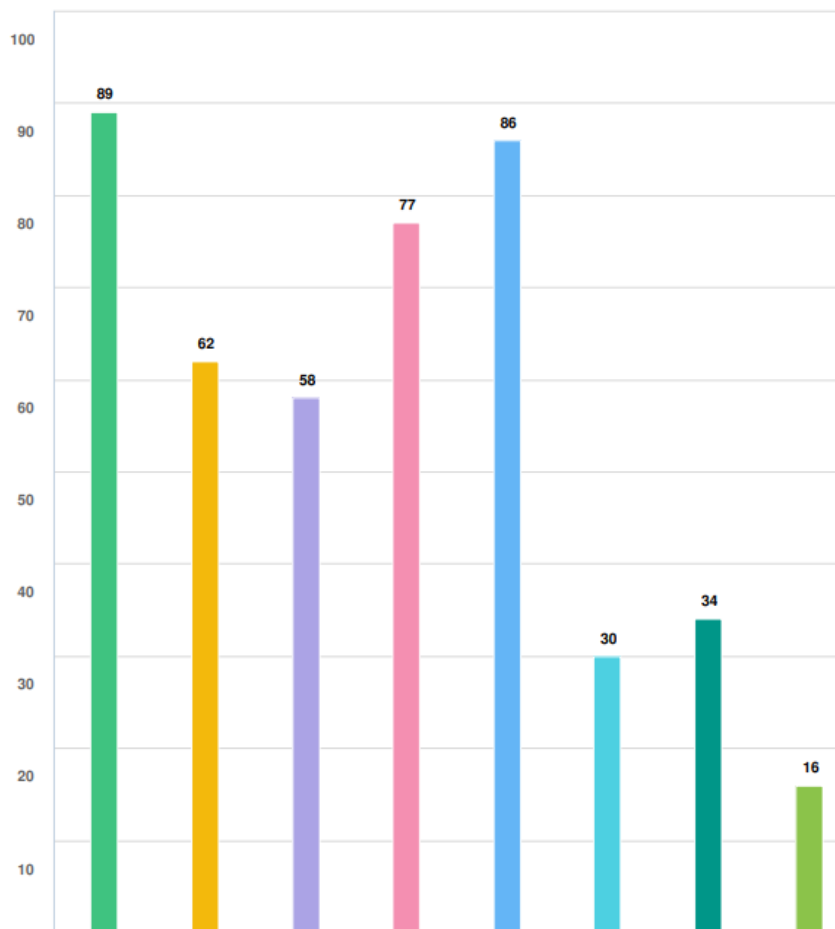
www.akhaveyoursay.aucklandcouncil.govt.nz/little-shoal-bay

Q4 - What activities and features of LSB do you value most?

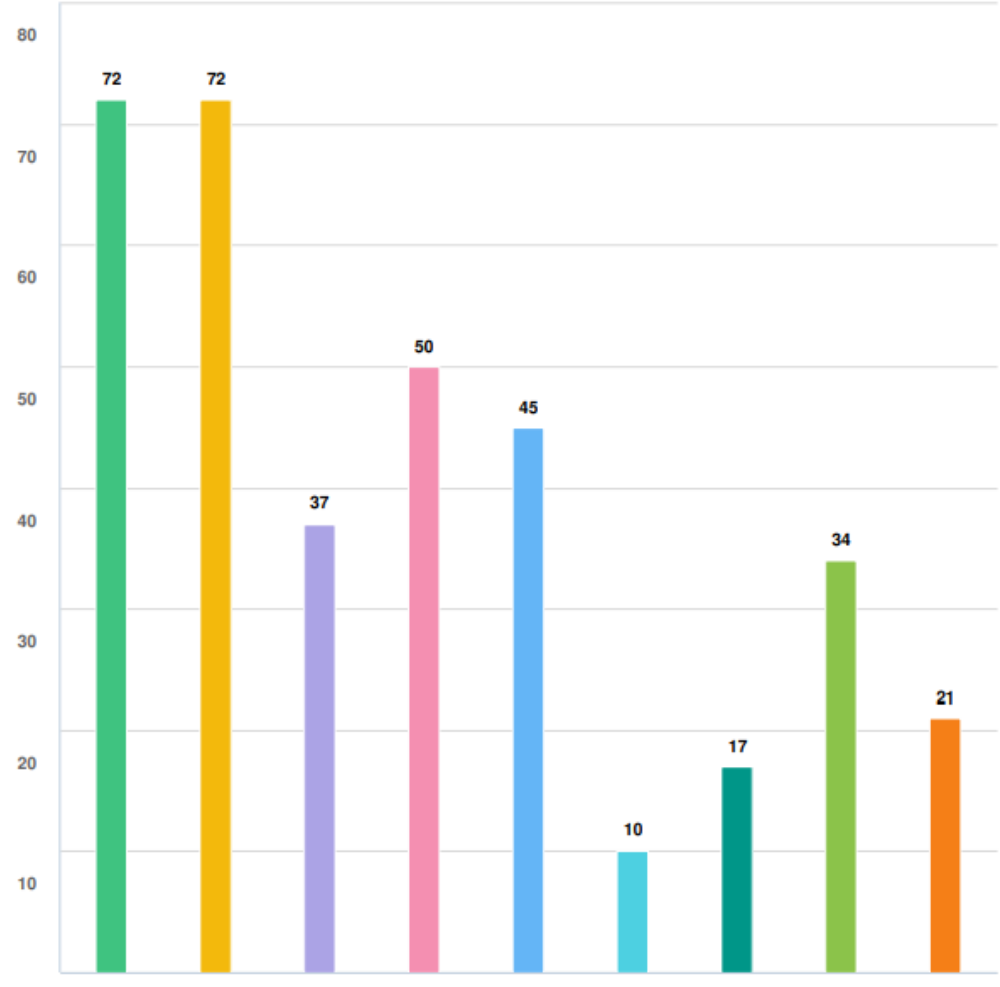
- Foreshore
- Walking
- Environment
- Play
- Active Recreation
- Boat Storage and Maintenance

Question options

- Foreshore
- Active recreation
- Play
- Environment
- Walking
- Boat launching area
- Boat storage and maintenance
- Another feature, please specify:



Q6 - What matters most to you?



Question options

- Protecting and enhancing the natural environment
- Enhancing passive and active recreation around the foreshore
- Enhancing informal community sport activities
- Improving freshwater quality and the stream environment
- Maintaining and enhancing access between Little Shoal Bay and Le Roys Bush
- Retaining and enhancing access to the park and to the Northcote Bowling Club
- Retaining accessible parking
- Retaining a boat launching area
- Other, please specify:

Community Objectives

Community objectives for Wai Manawa / Little Shoal Bay have been broken up into 6 categories:

- Environment
- Passive Recreation
- Active Recreation
- Access (pedestrian and cars)
- Recreational Water Access
- Community, Cultural and Heritage



Confirming the community objectives for Wai Manawa / Little Shoal Bay.



Next Steps



AK Have Your Say

Webinars

Workshop 1

Develop Options

Workshop 2

Finalize Options

Mana whenua engagement

Recommendation to local board



Examples of existing flooding: Inundation at Highest Astronomic Tide (3.6 m CD)





King Tide event January 2014 (Source: S. Speed, Auckland Council)



Inundation at Highest Astronomic Tide (3.6 m CD), plus 0.3 m Sea level rise



January 2011
TT Tonkin+Taylor



January 2011 (Source: S. Speed, Auckland Council)

Adaptation Strategies

**No active
intervention**



Allow natural processes to continue

**Hold the
line**



Defend the current coastline

**Limited
intervention**



Maintain existing

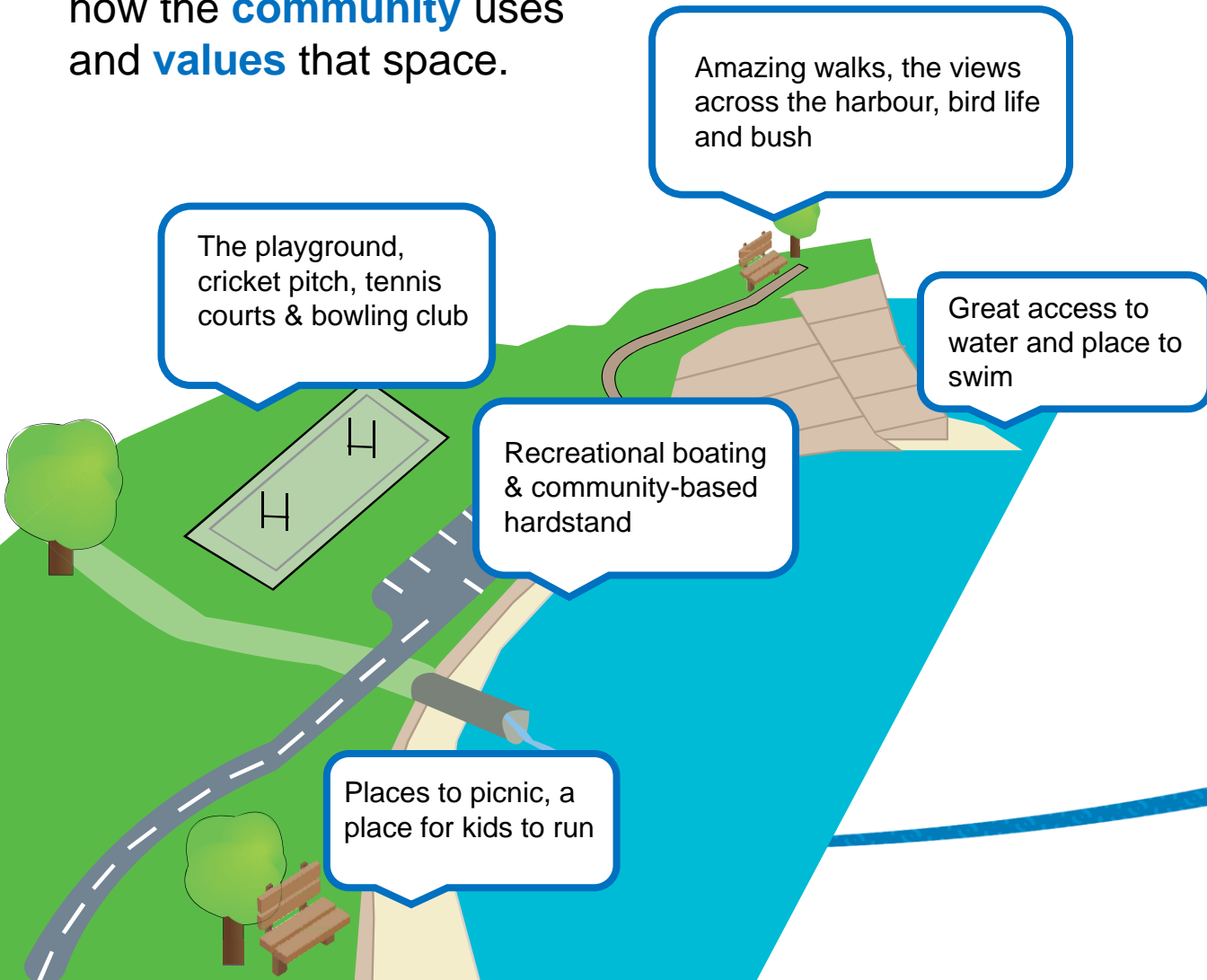
**Managed
realignment**



Move assets and infrastructure back

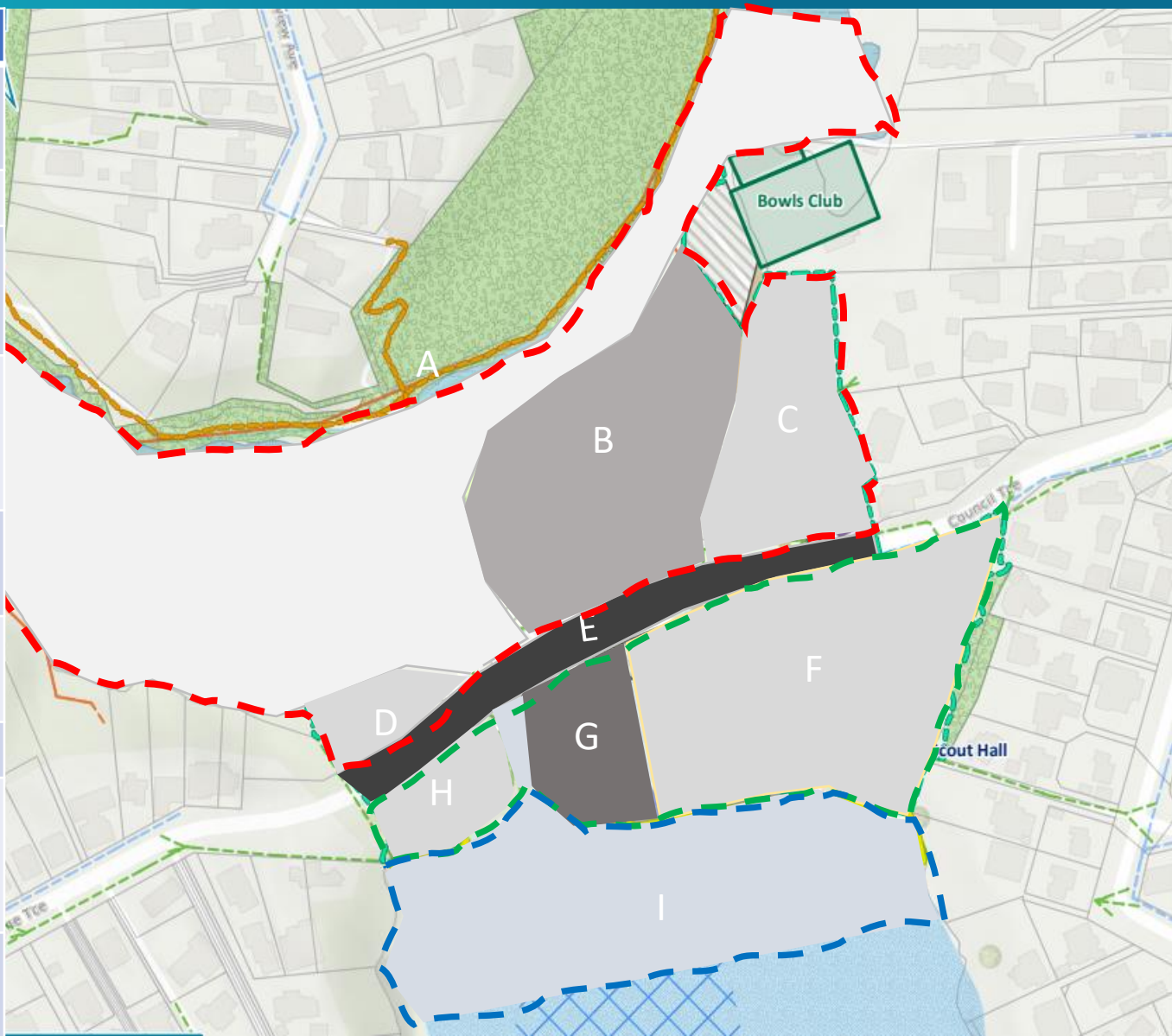
Community Values

To decide **how to adapt** an area, we need to understand how the **community** uses and **values** that space.



Area break down

Cell	Unit
North of road	A Le Roys Bush and environs
	B Cricket pitch
	C Tennis/Basketball and parking
	D Maritime Terrace abutment
Road reserve	E Road reserve
South of road	F Beach front reserve
	G Boat Yard
	H Maritime Terrace abutment
Foreshore (CMA)	I Foreshore



Environment

Protect and enhance the natural environment.

To enhance naturalisation of the reserve.

Enable access to stream and wetland.

To reduce gross pollutants entering the marine environment.



Active Recreation

Retain recreational areas for a range of sporting activities including tennis, basketball and bowls.

Enhance open grass areas suitable for informal community sport activities.

Enhance opportunities for active recreational experiences around the coastal edge including swimming, kayaking and fishing.



Passive Recreation

Provide areas with flexible uses (i.e. to picnic and play).

To enhance walking access with boardwalks.

Enhance opportunities for passive recreational experiences around the foreshore, the walking tracks.



Recreational Water Access

Consider options for rationalisation of the boat hard stand, boat ramps and coastal access provision.

Enhance opportunities for access to the water for swimming, kayaking and fishing.



Access (pedestrian and cars)

Retain and enhance the connectivity of the walking track network.

Retain and enhance access between the different areas of Little Shoal Bay.

Retain a low-speed road connection for public vehicle access through the reserve.

Provide ongoing access to the water.



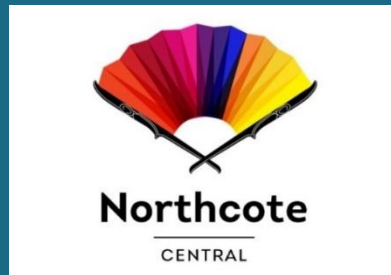
Community, Heritage and Cultural Values

Enable the community to be in environmental management and restoration of the reserve.

To recognise and protect heritage and cultural values of the stream and environs.

Encouraging current and future mana whenua and community involvement.





Annual Report to Kaipatiki Local Board 2 March 2022



This report will cover:

- NTC Annual Report 2021
- Key projects 2021/22
 - One Night in Northcote
 - Chasing a Plate videos
 - Town Centre advocacy
- Focus for 2022/23



Annual Report 2021



CHAIR'S MESSAGE

It's been a busy 12 months for Northcote Town Centre.

The highlight was the introduction of our new One Night in Northcote event – a series of evening performances in Pearn Place where we encouraged people to come and dine while enjoying musical entertainment.

Who'd have thought we'd be back in lockdown and levels 4 and 3 during the past two months? These are difficult times and they've caused a number of local businesses to close. However, as was the case last year, I've been encouraged by our members' response to the challenges. Many have altered their business practices to operate under lockdown restrictions and increase their ability to trade online.

The Northcote Town Centre Committee met six times during the 2020-21 year, as well as virtual catch-ups during lockdown. At each meeting, we receive updated reports from the management team and review upcoming activities and events.

We want to thank our executive committee of volunteers and our management team, BID Manager Gary Holmes and Chinese Liaison Crystal Pan.



We also want to extend a thanks to Kate Cumberpatch and Danielle Grant who have played important liaison roles with Panuku and the Local Board.

Thank you everyone for your support this past year, especially during the ongoing Covid-19 challenges. We look forward to another busy year, as is detailed in this report.

*Anthony Yee and
Raymond Tang*

Co-Chairs 2020/21



Annual Report 2021

2020-21 COMMITTEE



Anthony Yee (Co-Chair)
Unichem Pharmacy



Raymond Tang (Co-Chair)
Love a Duck



Niki Cowie
Baptist Op Shop



Jay Patel
Mitchells Paper Power



Alex Yang
Jing Dian Accountants



Danielle Grant
Kaipatiki Local Board



Kate Cumberpatch
Eke Panuku



Lindsay Waugh
NorthArt (Co-opted April 2021)



Ping Chen
Northcote Dental Centre
(resigned May 2021)



Brendan Duffy
Roast Valley
(resigned January 2021)



Gary Holmes
BID Manager



Crystal Pan
Chinese Liaison



BID Management Team

HIGHLIGHTS FOR 2020/21

- **One Night In Northcote** - Pearn Place came alive for three nights in April as we hosted a number of community and cultural groups entertaining visitors to the town centre while they enjoyed a meal from one of our many restaurants in an enticing outdoor seating environment. NTC supplied plenty of outdoor seating, rubbish bins, environmentally friendly disposable cutlery/plates, and security guards.
- **Lighting up Pearn Place** - We completed the installation of our "Singing Tree" - the first in New Zealand - which uses Aurora-sound-to-light technology enabling the public to interact with the lighting in real-time by singing, clapping, or yelling, creating an unforgettable and magical experience for participants. We also installed fairy lights in the Palm Trees along Pearn Place and we look forward to coming up with some exciting activations for these in the coming months.
- **Christmas** - We held our ever-popular annual Christmas party for Northcote staff and their families. Held at the Northcote Library, we welcome more than 60 people who enjoyed delicious food supplied by Love a Duck and Roast Valley as well as musical entertainment.
- **COVID-19** - Once again, the Covid-19 pandemic, with the resulting nationwide lockdown, proved to be a challenging time for our members. NTC provided support through regular emails to members ensuring they had the most up to date information relating to trading requirements under various levels, how to access wage subsidies and other government support and ensuring that all businesses were displaying QR Code posters and meeting the new reporting and record keeping requirements.
- **Environmental Issues** - We have continued to report environmental issues such as graffiti, and other damage to property to Auckland Council and other agencies for appropriate action.
- **Security** - Matrix Security have continued their patrols covering morning, afternoon and evening times (two random walk through during day, a 45min bed down check between 8pm and midnight and two checks during the night), as well as four extra daytime patrols during the school holidays.



Annual Report 2021

COMING UP IN 2021/22

- **Chinese New Year** - We are currently looking at options to celebrate the Chinese New Year "Year of the Tiger" a little differently in 2022. Following on from the success of One Night in Northcote this year, and working alongside the Kaipatiki Community Facilities Trust and the local Chinese community, we are considering running a number of smaller activations including musical entertainment in early February.
- **Town Centre advocacy** - NTC will continue to take the lead on advocating for and providing feedback on the planned Town Centre development upgrade by Panuku.
- **Promotional Videos** - We will collaborate with Thomas and Sheena from Chasing a Plate to produce three promotional videos highlighting many of our excellent eateries and restaurants.
- **Chinese Liaison** - Crystal Pan will continue to work closely with our Chinese business owners to provide support and assistance where needed.
- **Newsletters** - We will produce quarterly newsletters for all businesses and other key stakeholders. These printed newsletters are designed to keep members up to date with what is happening. They also provide us with an excellent opportunity to gain feedback as we hand deliver them.
- **Social Media** - We have continued to maintain our website www.northcote.co.nz and our Northcote Town Centre Facebook page which links to other local businesses and acts as a portal for local social media activity.
- **Ongoing work by Northcote Town Centre:**
 - Collaboration with Eke Panuku and other community groups on events and other initiatives.
 - Security patrols by Matrix Security
 - Keeping members informed through regular newsletters and face to face visits.
 - Reporting environmental issues to Auckland Council and other agencies.




Proposed expenditure: \$145,000 for year 2021/22
Budgeted income: BID Targeted Rate Income of \$125,000 for 2021/22
+ \$12,500 funds carried forward from 2020/21
+ Kaipatiki Local Board Grant



Northcote Town Centre Inc.

PO Box 36-364, Northcote, Auckland 0748

www.northcote.co.nz

 /NorthcoteTownCentre

CONTACT

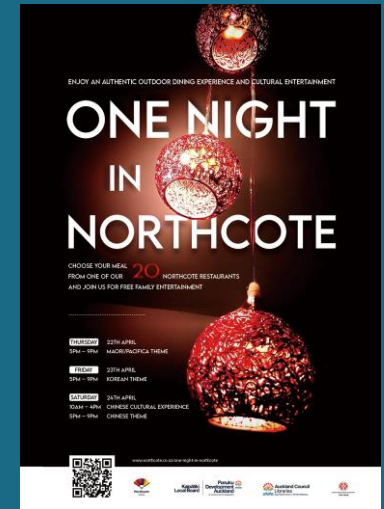
Gary Holmes - BID Manager
0274 966 283

Crystal Pan - Chinese Liaison
021 0238 8676



One Night in Northcote

- Held over three nights in April 2021
- Musical performances & outdoor dining
- Chinese cultural day



Chasing a Plate videos

- Three videos each featuring 5 restaurants
- Promoted online via You Tube and Social Media channels including Neighbourly
- Combined views of 50,000 to date on You Tube



Town Centre advocacy

- Continuing to provide feedback on future Panuku development
- Focus on making the Town Square really stand out
- Encourage building / centre improvements in the interim (lighting / CCTV etc)
- Now connected to Safer Cities grid & looking to improve CCTV capacity

Focus for 2022/23

- Activating town centre with food tours & focus on hospitality
- Ongoing advocacy with Eke Panuku and Local Board on Northcote Development, including ensuring “appropriate tenants”.
- Supporting our businesses with Covid recovery

Northcote – The Asia Pacific Marketplace

Where International Meets Local





Looking for Silver Linings & Windows of Opportunity 2 March 2022

Birkenhead Village Association thanks you for the opportunity to Update Local Kaipātiki Board- We greatly value our partnership and what we are able to achieve together.

It has only been 6 months since our last update to the Kaipātiki Local Board in August 2021. Given the rapidly changing local economic macro environment with the change from Delta to Omicron as the pandemic progresses we seized on this opportunity to update you on navigating this ever changing economic local landscape.,

Major Disruptions Continue

Since August we have remained under restrictions due to the pandemic, below is a table showing the basic outline of restrictions and key coronavirus events.

Level 4 18 Aug-22 Sept	Level 3 22 Sept-3 Dec	RED 3 Dec-31 Dec	ORANGE 31 Dec-24 Jan	RED 24 Jan-present
Delta Arrives	Restrictions ease with rules changing	New system implemented; vaccine passes now important	Larger gatherings allowed	Omicron Arrives Restrictions increase again

Calendar of Events

*(last 6 months since **August Update** to the Kaipātiki Local Board)*

September

Level 3:

- Applied to the Lion Foundation & Birkenhead Licensing Trust for funds to support the private install Village wide of CCTV Camera System

October

Level 3:

- Auckland Council cancelled Heritage Week
- Birkenhead Village AGM held via Zoom on 27 October (record attendance by Landlords)
- Applied to Round One Reactivate Tāmaki Makaurau funding, it was not successful

November

Level 3 reduced restrictions:

- Village wide reinstall of fringe fairy lights was started in November and completed in December



- 23 Security cameras were installed at key interest points across the Village

December

Level RED:

- Restrictions eased, all businesses are allowed to fully open however some require vaccine passes
- Rotary and Council cancelled the Santa Parade due to gathering restrictions
- Covid Vaccination Centre in Highbury Mall (old Warehouse location) closed
- **Christmas Festival, Dressage of Street & Cash promotion** was executed

January

Level ORANGE:

Omicron arrives, **level RED** began 24 January

Government announced 27 January projections of 80,000 cases per day at the peak of the pandemic

Whale Tale Launch across Auckland 24 January - 18 April

Birkenhead Village Tail installed 17 January

Fabulous community enjoyment and feedback!

Sponsored by Birkenhead Village & Kaipātiki Local Board

(Local Board funds redirected from Heritage Festival)



Whales Tail Auckland 24 January - 18 April

Birkenhead Village to date has had 490 customers visit and

56 Votes

Small pod of whales created by School children arrive mid-march

Harcourts sponsored Northcote Primary School will be on display in Birkenhead village
 Birkenhead College also participated

While we had no intention to purchase our Tail, public pressure is mounting

John Gillon - Kaipatiki Local Board
 January 29 · 🌐

Check out the beautiful Whale Tail artwork by the roundabout at Birkenhead Village, part of the Auckland-wide WWF Whale Tales 2022 exhibition.
 "Forward the Flow" by artist Tiger Wills will be in Birkenhead until 18 April before all of the sculptures are auctioned to raise funds towards protecting marine life in the Hauraki Gulf.
 For more information and a map of all the whale tails, see: <https://whaletales2022.org/>
 Part-sponsored by the Kaipatiki Local Board and Birkenhead Village.
 #whaletales2022

1,335 People reached 59 Engagements - Distribution score Boost unavailable

👍❤️ 9 1 Comment 1 Share

Like Comment Share

Most relevant ▾

Comment as Birkenhead Village 📷 📸 📺 📺

Karen Maier
 Hope we can figure out a way to keep it Luke our they add so much character and belonging to the community especially for the children

Caroline Wade (Top fan)
 Thank you for sharing! I saw this a few days ago and wondered at the story. Its beautiful!!!!
 Like Reply 4w 1 Reply

Ra Paul Thomson Juanita
 Like Reply 4w

June Barker
 Can there be dolphin next time around please wow that's so so pretty I must check it out
 Like Reply 4w

Shonagh Croasdale
 Hope Birkenhead village can keep it just like the owl.
 Like Reply 4w

Chris Whyte
 Hopefully we won't see anymore kids climbing all over these.
 Like Reply 4w

Tracy Mulholland
 Fantastic
 Like Reply 3w

Ngairie Mulholland
 Awesome
 Like Reply 3w

February

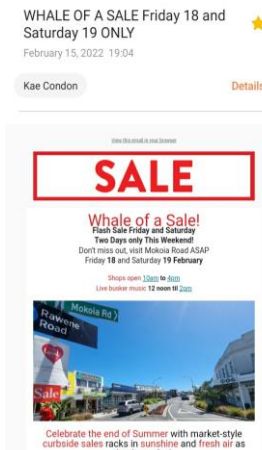
Level RED:

- Proceeded safely with **Valentine's Day Promotion**, mailchimp & social channels campaign and live music 12-14 February featuring 7 mariachis



Video of mariachi's: <https://drive.google.com/file/d/1hH7UDcX - XQ4PNX4gvl7WtGcYjHWceh0/view?usp=sharing>

- **New initiative to stimulate retail trading - Flash Sale Whale of a Sale**



Full Mokoia Road Activation of 8 key Retail stores
 Anecdotal indications from Businesses involved
 Friday for some
 Saturday at Pre Covid-Levels

- **Major increase in our online, social , direct mail communications** with customers has shown significant impact. Our Valentine's Day social media campaign received 7,357 views inside 24 hours.



Facebook statistics leading up to Valentine's Day

Latin Day of the Chilli Festival was originally scheduled for 21 March and the **concept is being reshaped**. The current thinking is that funds of \$5k will be reformatted to produce some local economic stimulation initiatives.

New Initiatives by BID

- **Applied for Reactivate Tāmaki Makaurau funding** opened by the National Labour Government as advised by Shannan Halbert's office. We were not successful in the first, second or third round and are currently on hold as of 9 February
- **Village wide install of fringe fairy lighting** to replace the previous fairy lights which were showing signs of wear.
- **23 Security Cameras** were installed at the Village entrances and historic key locations of interest
- **24/7 Liquor Ban**. After 7 years working together, we would like to thank the Local Board for the important support of this initiative and 24/7 bylaw was passed into.
- **Business Breakfast Series** Christopher Luxon 21 February



Beautification

- **Vector has removed two of our “Street art installations”**, one on Mokoia Road by the bus stop and the other on the corner of Hammond Place and Birkenhead Ave by the old ANZ location. We would like to earmark funds to repaint on Mokoia Road. We have successfully funded the repainting of the Hammon Place Street art installation and carried it out last year.
- We are **ready to install Welcome Signage** to the Village at the entrances of Birkenhead Village. We would appreciate the support of the local board with this initiative if we require installation on Local Board/AT Assets (possibly Mokoia Road off bypass)

Macro Infrastructure Issues to be resolved

Signature Globe Lights

- **We thank the Local Board for the support late last year on making our signature Globe lights modernisation and retainment possible by allocating \$50k of Local Board funds.** Our research shows this initiative by the Local Board is widely supported by The Residents, Customers, Businesses & Landlords of Birkenhead Village.
- We suggest a good starting point would be matching the bulbs in the globe lights to make them all the same colour as the sporadic restorations have resulted in different bulb types and colours across the Village.



- Following this, we would like to refurbish the three globe lights at the main entrance to the village, these are located outside Salvation Army Family Store, the old WINZ building and the Good Home.

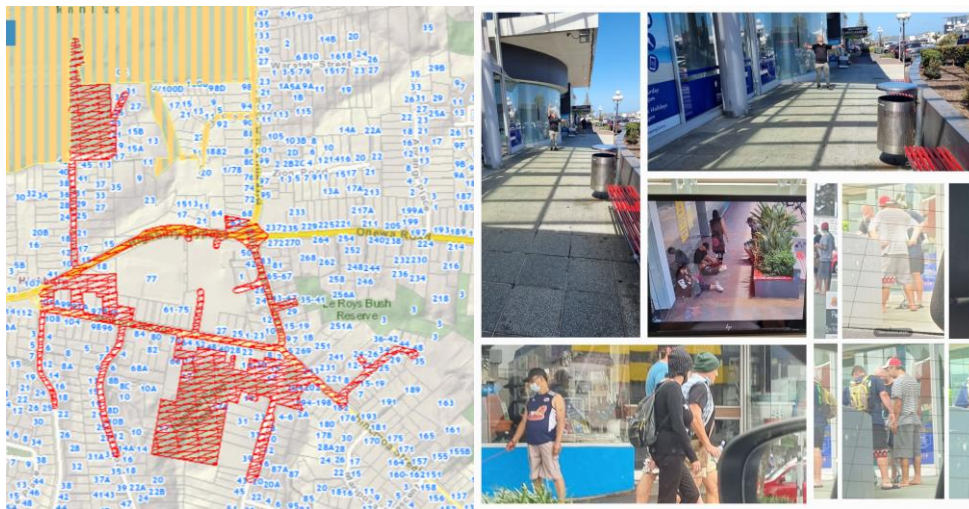


Pavers

- The paving has become something of a trip hazard and long term, there will need to be another solution for the cobblestones, which were never designed to hold up under the vibrations from increased traffic and double decker buses. We intend to get the best possible outcome for Birkenhead here but given current Council cashflow, a solution will be some years away.

24/7 Liquor Ban

- Enforcement of the liquor ban, discussions have been held in a meeting in January with the local police Dave Murden and Bradley Sanderson. Once the signage has arrived and been installed and the local police have returned from duties at MIQ, the new rules will be enforced.
- 24/7 Liquor Ban implementation, we are waiting on the signage from the council and AT



Upcoming Concept Explorations

Met with Jill at Kaipātiki Facilities Trust to discuss concepts



Safe Events Movies in the Parks in the Village

Met with Miriama Rapuna onsite in Birkenhead Village to scope possible site locations

- Rawene Carpark
- Nell Fisher Reserve
- Kaimataara o Wai Manawa

Kaipātiki Facilities Trust can produce small scale movie events for \$4k approx inclusive of Screen techno & Sound expert



Further Activations for the Whales tale



Kaipātiki Facilities Trust /Birkenhead Village brainstorm
 To Activate three corners safely for families
 Jill to supply fishing rods and fishing games potentially

As always thank you to the Local Kaipātiki Board for their energy ideas and tangible \$ support for the local Business and Community as we navigate the unknown waters of the next few months of the peak of Omicron. We suspect the next 3 months will be the most challenging we have faced to date.

It is challenging times indeed for us all but together we are definitely better.

We have started our 2022 - 2027 5 year strategic plan.. Some of the last year of our plans 2017-2022 have been disrupted due to Covid. We are wanting to get a current read on the macro economic and social trends of the environment we will be operating in the next 5 year horizon. McKinsey out of New York has identified 5 years of digital change in “Recent data shows that we have vaulted five years forward in consumer and business digital adoption in a matter of around eight weeks.” “Businesses that once mapped digital strategy in one- to three-year phases must now scale their initiatives in a matter of days or weeks.”

Thank you. Happy to take questions.



AT Activities in the Road Corridor Bylaw 2022

Local Board Workshop – March 2022

Let's go there 

Purpose and contents

Purpose

To provide background and invite questions and feedback in regard to the proposed Activities in the Road Corridor Bylaw 2022

Contents

1. AT Bylaws and the need for review
2. Activities in the Road Corridor Bylaw
3. Detail on the provisions + changes
4. Discussion





Our transport system bylaws

AT has a range of bylaws. Some of these are either already expired, or close to expiry

Most bylaws were inherited from before the council amalgamation. In 2015 a combined legacy bylaw was passed to merge further bylaws. We are now in a position, however, where most bylaws require replacement.

Five bylaws were identified as in need of update; as they each relate to specific activities that can occur (with approval) in the road corridor, there is an opportunity to consolidate and update these bylaws together to make AT's bylaws simpler to understand and to manage.

Our bylaws are local regulations over and above the regulations already provided for in the **Local Government Act** and **Land Transport Act**. Bylaw-making authorities such as Auckland Transport are able to regulate issues that are considered important to their functions; for example, the safety and efficiency of the Auckland transport system. This means that bylaws do not need to encompass every possible issue that may occur, but rather selected issues that have been identified as important.

Bylaw	Purpose	Status
Speed Limits	Setting and enforcing speed limits	Up to date – developed in 2019 
Signage	Setting and enforcing acceptable signage in the road corridor standards	Currently being updated 
Traffic	Setting requirements for parking and control of traffic on roads	Current, but requires updating 
Legacy Bylaw Provisions on Construction in the Road Corridor and Other Public Places Bylaw	A combined legacy bylaw approved in 2015 which covers seven bylaws from pre-amalgamation councils	Expires October 2022 
Rodney General Bylaw 1998: Chapter 6 Stock on Road	Regulating the movement and tethering of stock on roads	Expired 
Franklin Livestock on Road Bylaw 2010	Regulating the movement and tethering of stock on roads	Expired 
Public Safety and Nuisance Bylaw 2013	Regulates the display of street names and the identification and numbers of premises.	Expired 
Trading and Events in Public Places Bylaw 2015	Regulates trading and events in public places	Expires March 2022 

Proposed Bylaw

We seek to replace five existing/legacy bylaws with the proposed Activities in the Road Corridor Bylaw 2022

The core components of the bylaw consist of special activities that may from time to time need to occur within the road corridor, including:

- Construction activities in the road corridor, including traffic management plans (TMPs) and the construction of vehicle crossings.
- Moving livestock through the road or containing livestock within the road corridor.
- Trading, events and filming. These activities are similar to those regulated by Auckland Council's *Public Trading, Events and Filming Bylaw 2022*, with special consideration of the potential implications for transport operation and safety where these activities occur fully or partly within the road corridor.

We have also considered emerging needs and trends in transport to ensure the proposed Bylaw continues to regulate activities appropriately in years to come; for example, the need to ensure electric vehicle charging cables do not cause hazard on footpaths.

History and timelines

August – September 2021:

Draft bylaw developed with input from subject matter experts across Auckland Transport and Auckland Council.

October – December 2021:

Information provided to Local Boards, Mana Whenua and Council Advisory Boards about the new bylaw approach.

January – February 2022:

Current consultation period

March – April 2022:

Hearing and deliberations

May 2022:

Projected board approval of the Activities in the Road Corridor Bylaw 2022.



General Provisions

Let's go there 

General Provisions

Describes general restrictions on activities in the road such as placement and storage of objects. Also includes Temporary Traffic Management Plan (TMP) requirements.

Key elements 1: Specific restrictions

4. Restrictions on specific items

- (1) In any place that is part of the **Auckland transport system** a person must not, except with the prior written approval of Auckland Transport, -
 - (a) place or collect any bin or other waste container in the **road corridor**, other than in accordance with the Auckland Council Waste Management and Minimisation Bylaw 2019; or
 - (b) place any portable toilet or portable ablutions block; shipping container or storage container; or generator within the **road corridor**.

Explanatory note: subclause 1(a) includes skip bins or similar waste containers regardless of the material the bin is constructed of and includes waste containers made of flexible material.

General Provisions

Key elements 2: Discretionary power for approvals

6. Auckland Transport may grant approvals

- 3) Auckland Transport may refuse to grant any **approval** sought under this Bylaw at its discretion.
- 4) In deciding whether to grant an **approval**, Auckland Transport may have regard to the following, without limitation, -
 - (a) the performance or activities of an applicant in relation to any previous **approval** granted to the applicant, including prior breaches of this Bylaw:
 - (b) whether the application, if approved, would likely support a reduction in greenhouse gas emissions in alignment with national and regional strategies or plans related to climate change:
 - (c) whether an adverse impact on the **Auckland transport system** or the public may occur due to the scale of the application, if approved, or due to the number of approvals granted in the past three months.



Parts 1 to 4: Construction and related activities

Parts 1 to 4: Construction and related activities

Part 2: Street Damage

Part 3: Encroachments

Part 4: Vehicle crossings

The overall approach for these four Parts is to consolidate and update the Legacy bylaw provisions that were inherited by AT:

- Auckland City Council Bylaws: Bylaw No. 6.
- Franklin District Council Public Places Bylaw 2007.
- Manukau City Consolidated Bylaw 2008: Chapter 5.
- North Shore City Council Bylaw 2000: Part 13 Construction and Scaffolding.
- North Shore City Council Bylaw 2000: Part 2 Public Places.
- Papakura District Council Public Places Bylaw 2008.
- Rodney District Council General Bylaw 1998: Chapter 9 (Road Crossings and Numbering of Premises).



Parts 1 to 4: Construction and related activities

Key elements:

- Generally, these sections are not intended to contain new or surprising regulations.
- Where possible, legacy regulations have been simplified, especially where aspects are already covered by the LTA / LGA or AT otherwise doesn't feel something needs to be specifically regulated from a transport perspective.
- Important elements that relate to construction activities are contained in General Provisions above (TMPs and Restricted Items) as these often pertain to other activities as well, for example Events and Filming.

Part 5: Livestock on Roads

Part 5: Livestock on roads

Regulates grazing, tethering and movement of livestock on the road corridor.

Our approach:

- To consolidate and update the Franklin District Council and Rodney District Council legacy bylaws and create a single set of regulations for the entire region.
- To reflect updated standards since the legacy bylaws were written.
- To consider Vision Zero and opportunities to encourage safe speeds.



Part 5: Livestock on Roads

Key elements: Requirements for moving livestock

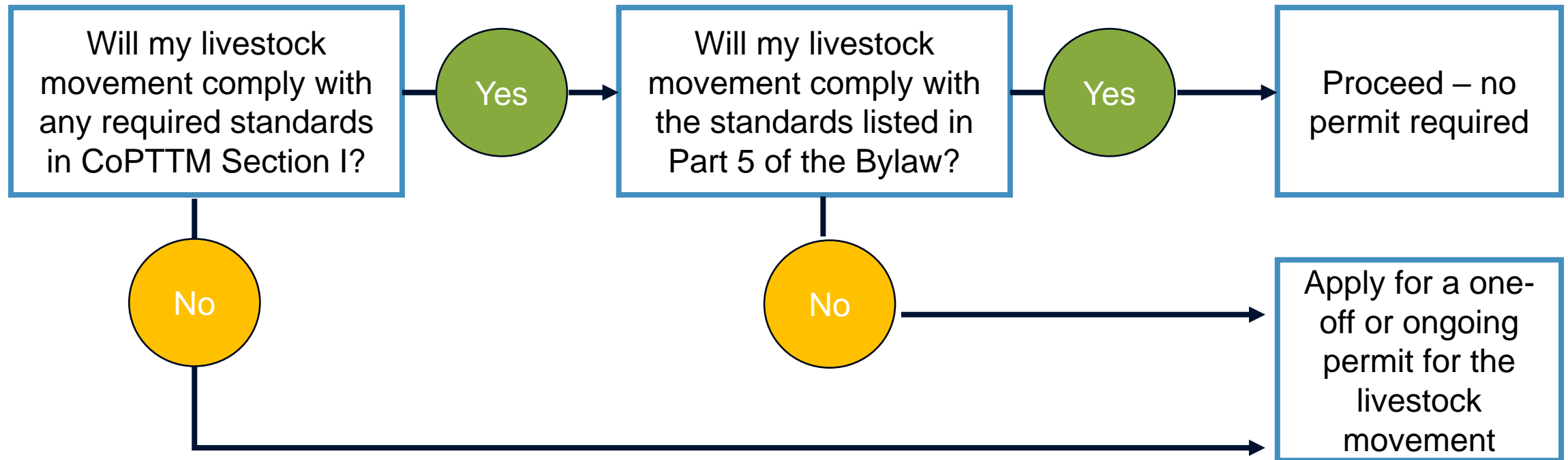
When moving **livestock** on a **road**, **drovers** and **livestock** owners must comply with **CoPTMM [Section 1]** at all times and ensure:

- (a) road cones or livestock warning **signs** are in place where road traffic has adequate time to stop; and
- (b) vehicle operating **speeds** approaching and through the site is managed to 30km/h or lower and that vehicles can pass through livestock safely; and
- (c) livestock are not moved on any road between the time from 30 minutes before sunset to 30 minutes after sunrise or when **visibility** is less than 100 metres; and
- (d) there is to be a minimum of **two drovers** present, located one in front and one at the rear of the mob. At least one drover must be over 16 years of age and competent to move stock; and
- (e) for cattle and sheep, livestock in one mob cannot exceed 600 head of cattle or 3000 head of sheep; and
- (f) livestock are to be kept moving at all times and the time livestock are on the roadway must be minimised; and
- (g) the use of an effective form of **protection** for the road corridor; and
- (h) no damage occurs to the road or private property, or the owner of the livestock takes **responsibility** for repairing any damage caused; and
- (i) excessive livestock excrement is removed from the road after each occasion.



Part 5: Livestock on Roads

When would a permit be required to move stock?



Part 5: Livestock on Roads

About CoPTTM

- Code of Practice for Temporary Traffic Management
- Generally, lays out the standards for traffic management of various types and scale.
- Section I: Stock Under Control (Crossing and Droving) is the only section that we propose needs to be complied with in Part 5 of the Proposed Bylaw (*note: we will update the text to specify Section I*)
- This is an industry standard that does not require people to hold a Traffic Controller qualification in order to be considered compliant.
- A majority of the standards within CoPTTM Section I only apply in certain circumstances, for example roads with certain traffic volumes, or certain flock or herd sizes.



Part 6: Trading, Events and Filming

Let's go there 

Part 6: Trading, Events and Filming

Our approach: To align closely with Auckland Council's Public Trading, Events and Filming Bylaw 2022

Key elements:

- **Micro-mobility providers (eg e-scooters hire schemes) are a new type of trading that has emerged in recent years. These are now explicitly encompassed by the bylaw.**
- **The list of conditions that AT may apply to approvals includes requirements to maintain accessible routes, and limitations on the number of micro-mobility devices that may be used under a particular license.**



Thank you

Let's go there 