
D. Mapping and Feedback from Consultation



Huapai District School workshop, Years 7/8, September 13, 2016.

Targeted Consultation

D1 May 17, 2016 Kumeu Arts Centre 78

Wider public consultation

D2 September 10, 2016, September Kumeu New World 79

D3 September 21, 2016, Riverhead Citizen Hall 80

D4 September 24, 2016, Kumeu Cricket Club 82

Huapai District School workshop

D5 September 13, 2016, Years 7/8 84
(note: only a selection of maps have been published).

Online Feedback Form Summary

D6 Results from the Shape Auckland online survey 87
(generated October 13, 2016)

● Footpath
○ Walkway/cycle



Legend

- Existing Connections
- Possible Connections
- Schools
- Special Housing Area
- Outstanding Natural Features (pōngake)
- Land (pōngake)
- Rail Station
- Railway
- Parcel Boundaries
- Future Urban
- Neighbourhood Centre
- Local Centre
- Town Centre
- Public Open Space - Conservation
- Public Open Space - Informal Recreation
- Public Open Space - Sport and Active Recreation
- Public Open Space - Community
- Public Open Space - Civic Spaces
- Biodiversity
- Habitat Protection Areas
- Archaeological Site
- Hayward and Diamond
- Historic Botanical Site
- Historic Structure
- Maori Heritage Area
- Maritime Site
- Reported Historic Site
- Maori Freehold Land
- Sites and Places of Significance to Māori Whenua (pōngake)
- Sites and Places of Value to Māori Whenua (pōngake)
- Partage connection - The Ngāwhero Partage
- Auckland Transport - Suburban road improvements

DISCLAIMER:
This map/plan is illustrative only and information should be independently verified on site before taking any action. Copyright Auckland Council, Land Parcel boundaries from LINZ (Crown Copyright Reserved). While every care has been taken, Auckland Council gives no warranty as to the accuracy and completeness of any information on this map/plan and accepts no liability for any error, omission or use of the information. Height datum: Auckland 1946.

Waimauku - Huapai - Kumeu - Riverhead

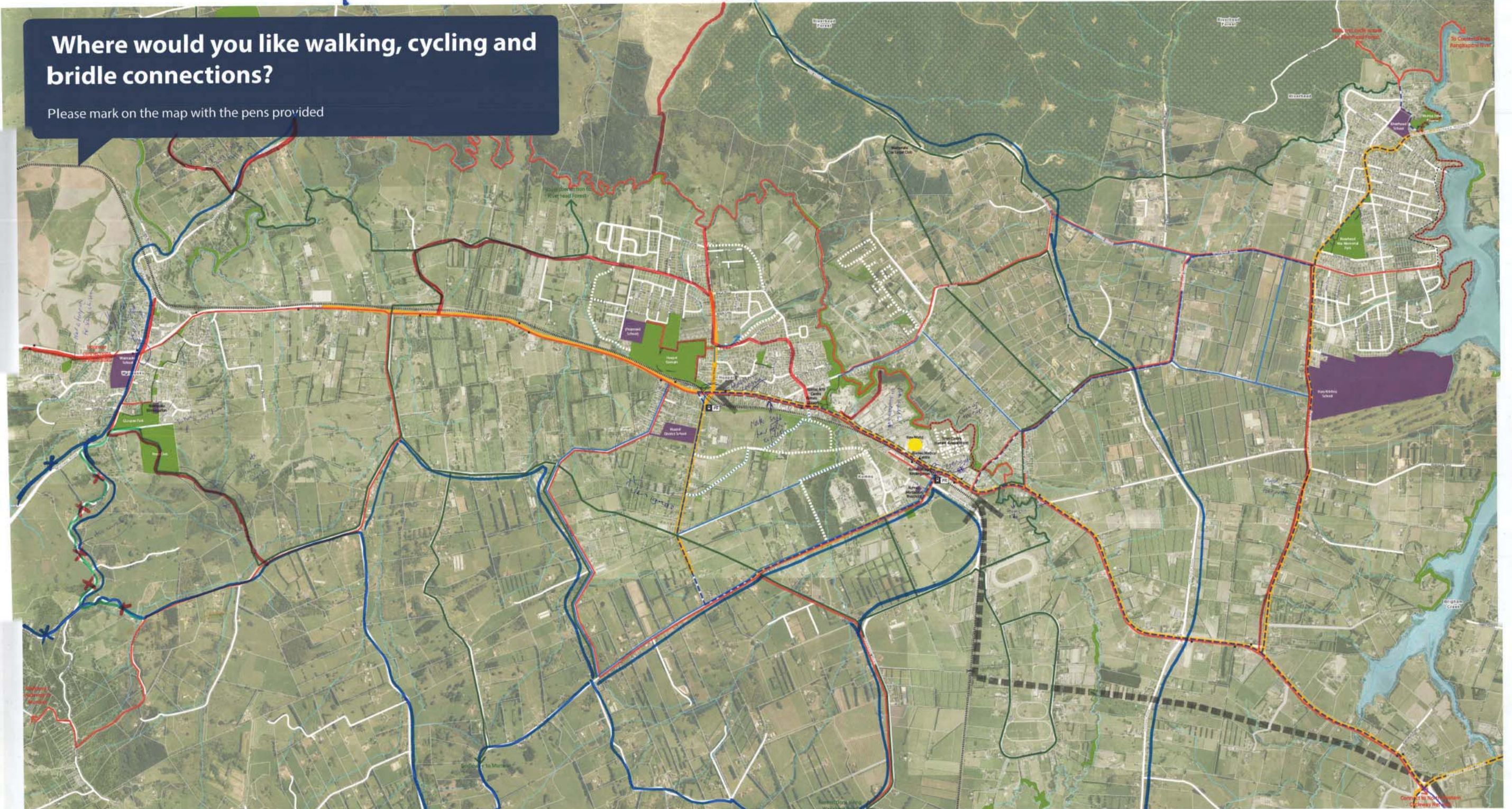
0 300 600 900
Meters
Scale @ A0
= 1:9,500
Date Printed:
20/04/2016



Consultation - New World Entrance - Saturday 10th Sept 2016

old N rd
Habitat site: 2016157

Where would you like walking, cycling and bridle connections?
Please mark on the map with the pens provided



RODNEY GREENWAYS: KUMEU, HUAPAI, RIVERHEAD AND WAIMAUKU MAPS FOR CONSULTATION

Walking Rd

KEY		Existing and future connections		Community aspirations (May 17th 2016 consultation)	
	Schools (incl. kindergartens)		Existing path connections		walking and cycling
	Existing AC Land (parks, esplanade reserves & open spaces)		Future path connections (taken from SHA and planning developer submissions)		cycling
	Future open space (land shown as 'open space' at planning level / SHA)		Existing main roads		bridle connections
	Riverhead Forest		Future roads (designations from various Structure Plans, SHA and AT)		Existing bus stops
			Rail		Auckland Cycle Network - Metro routes
			Future commuter train stations / Park + Rides		Auckland Cycle Network - Connector routes
			Future rapid transport network (AT)		
			Future road improvements (SH16, Tapu Road, Main Road, Station Road, Access Road, Coatesville, Riverhead Highway, Brigham Creek Road)		

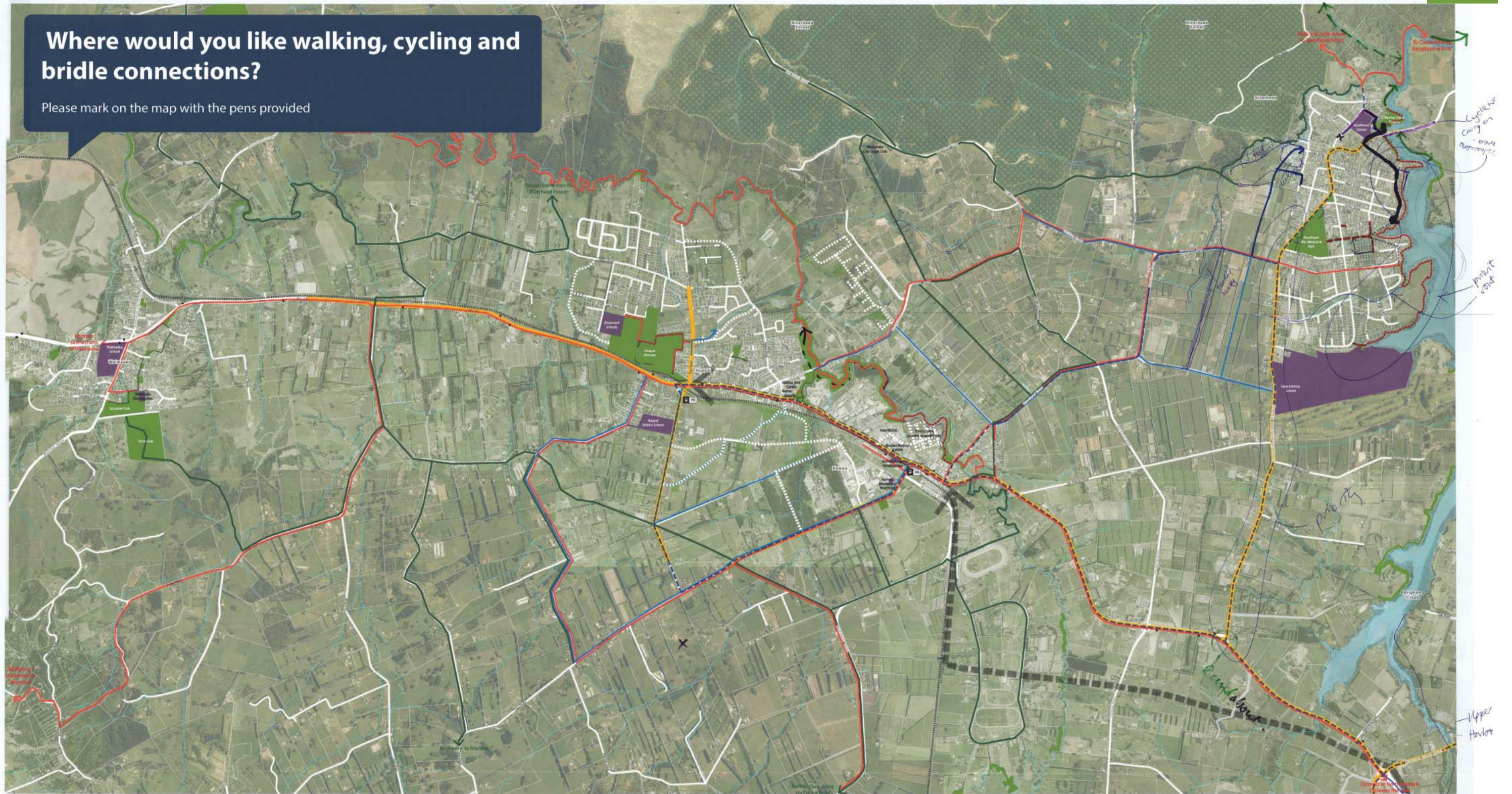


Have your say to help create the world's most liveable city.
For more information, email: greenwaysrodney@aucklandcouncil.govt.nz or visit www.aucklandcouncil.govt.nz/haveyoursay (keywords: Rodney Greenways)



Where would you like walking, cycling and bridle connections?

Please mark on the map with the pens provided



RODNEY GREENWAYS: KUMEU, HUAPAI, RIVERHEAD AND WAIMAUKU MAPS FOR CONSULTATION

KEY		Existing and future connections		Community aspirations (May 17th 2016 consultation)	
Schools (incl. kindergartens)	Existing AC Land (parks, esplanade reserves & open spaces)	Existing path connections	Future path connections (taken from SHA and planning developer submissions)	Existing bus stops	walking and cycling
Future open space (land shown as 'open space' at planning level / SHA)	Riverhead Forest	Existing main roads	Future roads (designations from various Structure Plans, SHA and AT)	Auckland Cycle Network - Metro routes	cycling
		Future roads (designations from various Structure Plans, SHA and AT)		Auckland Cycle Network - Connector routes	bridle connections
		Rail	Future commuter train stations / Park + Rides		
		Future rapid transport network (AT)			
		Future road improvements (SH16, Tapu Road, Main Road, Station Road, Access Road, Coatesville, Riverhead Highway, Brigham Creek Road)			

Bridle ways = wide away from traffic. (if shared) away from veds.

infost = 1m wide shared = 3m wide

Ropuipuku paths 10km open space

Westgate mall connected

Not to Scale

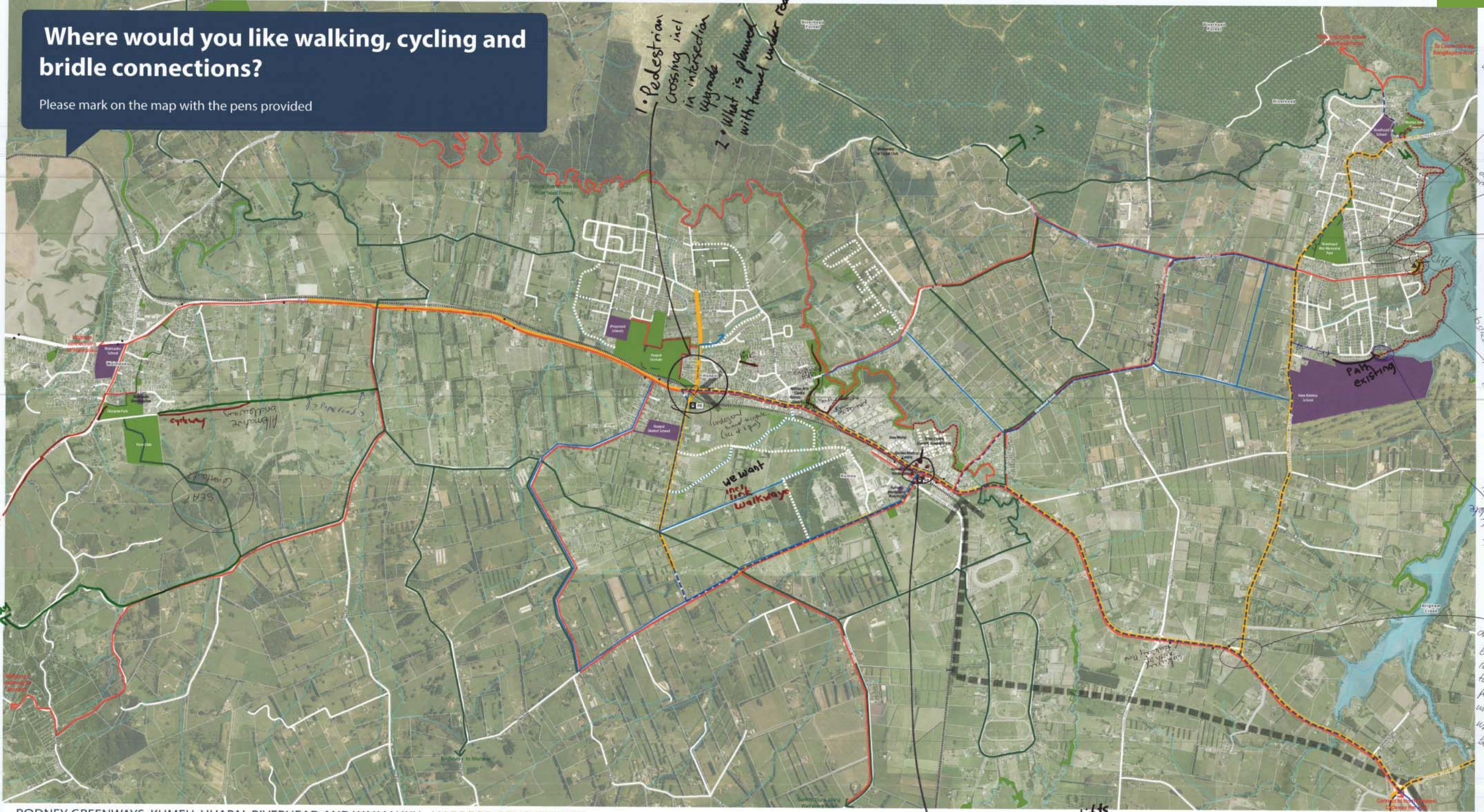
Have your say to help create the world's most liveable city.

For more information, email: greenwaysrodney@aucklandcouncil.govt.nz or visit www.aucklandcouncil.govt.nz/haveyoursay (keywords: Rodney Greenways)



Where would you like walking, cycling and bridle connections?

Please mark on the map with the pens provided



RODNEY GREENWAYS: KUMEU, HUAPAI, RIVERHEAD AND WAIMAUKU MAPS FOR CONSULTATION

KEY		Existing and future connections		Community aspirations (May 17th 2016 consultation)	
Schools (incl. kindergartens)	Existing path connections	Rail	Existing bus stops	walking and cycling	walking and cycling
Existing AC Land (parks, esplanade reserves & open spaces)	Future path connections (taken from SHA and planning developer submissions)	Future commuter train stations / Park + Rides	Auckland Cycle Network - Metro routes	cycling	cycling
Future open space (land shown as 'open space' at planning level / SHA)	Existing main roads	Future rapid transport network (AT)	Auckland Cycle Network - Connector routes	bridle connections	bridle connections
Riverhead Forest	Future roads (designations from various Structure Plans, SHA and AT)	Future road improvements (SH16, Tapu Road, Main Road, Station Road, Access Road, Coatesville, Riverhead Highway, Brigham Creek Road)			



Not to Scale

Have your say to help create the world's most liveable city.

For more information, email: greenwaysrodney@aucklandcouncil.govt.nz or visit www.aucklandcouncil.govt.nz/haveyoursay (keywords: Rodney Greenways)

"Shape Auckland"

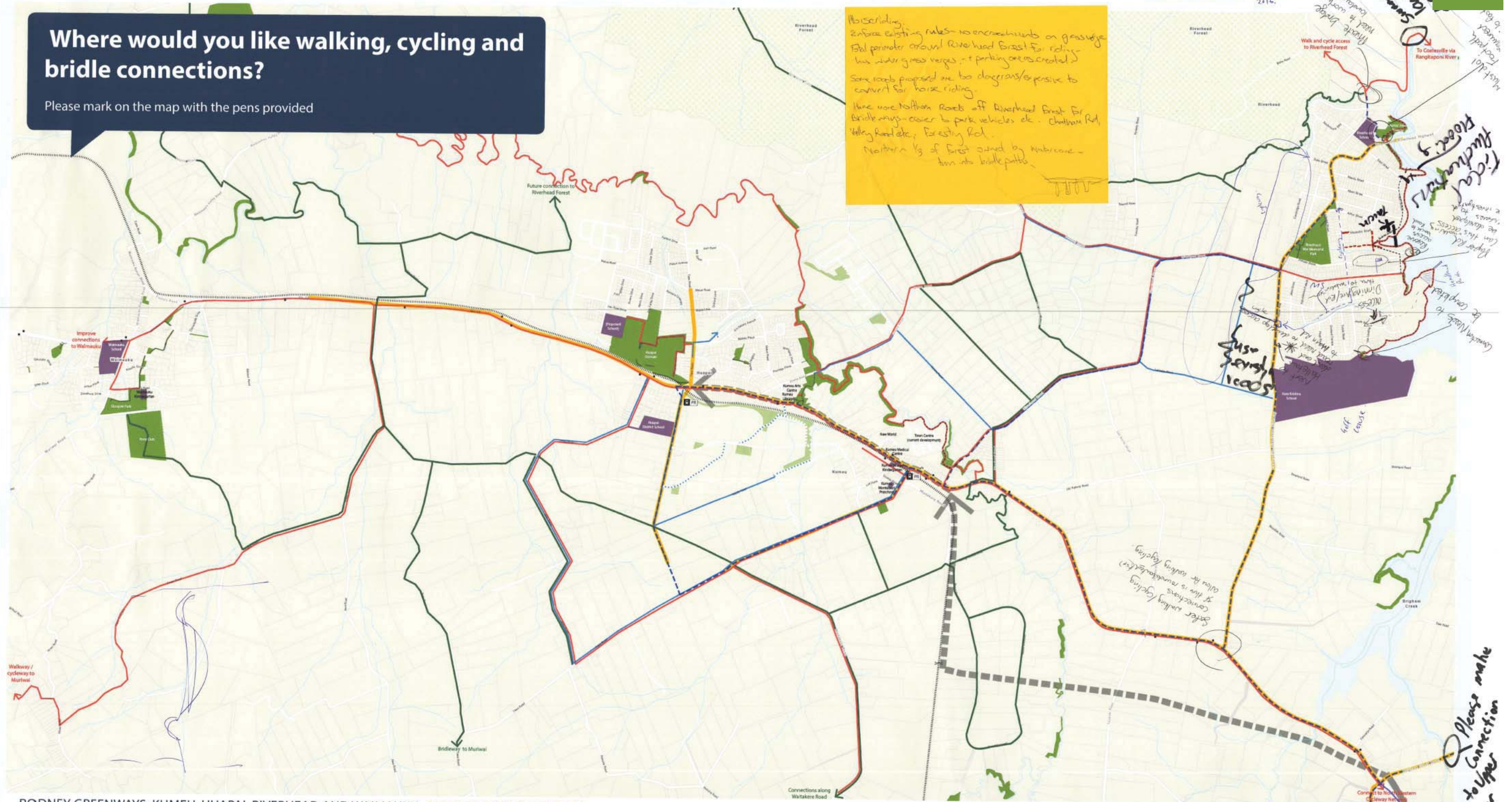


Handwritten note: Do site visits during busy time. small drop off/pickup. 7-8 \$ 4-5 working times.

Handwritten note: Pedestrian crossing lights also required on opp. side of road. because ped/cyclists cross @ existing lights and end up wrong side of road face facing railway (no rail crossing) Access

Where would you like walking, cycling and bridle connections?
Please mark on the map with the pens provided

Handwritten notes:
 No cycling, enforce existing rules - no encroachments on grassy edge
 EBL perimeter around Riverhead Forest for riding
 has wide grass verges - + parking area created
 Some roads proposed are too dangerous/expensive to convert for horse riding.
 More more Northern Roads off Riverhead Forest for bridle ways - easier to park vehicles etc - Chatham Rd, Valley Road etc, Forestry Rd.
 Northern 1/3 of forest owned by Hauraki - turn into bridle paths



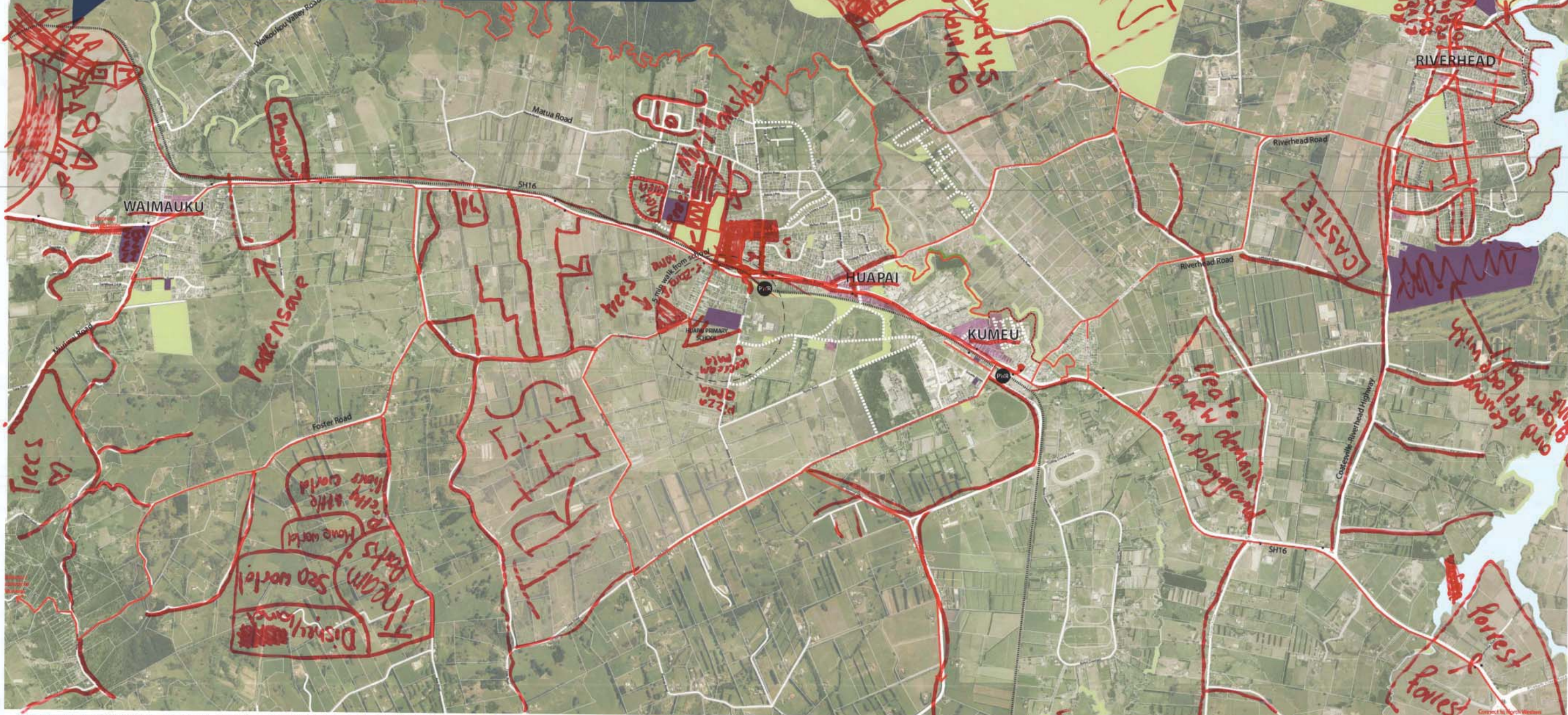
KEY	Base mapping	Existing and future connections	Community aspirations (May 17th 2016 consultation)
	Schools (incl. kindergartens)	Existing path connections	walking and cycling
	Existing AC Land (parks, esplanade reserves & open spaces)	Future path connections (taken from SHA and planning developer submissions)	cycling
	Future open space (land shown as 'open space' at planning level / SHA)	Existing main roads	bridle connections
	Riverhead Forest	Future roads (designations from various Structure Plans, SHA and AT)	
		Rail	
		Future commuter train stations / Park + Rides	
		Future rapid transport network (AT)	
		Future road improvements (SH16, Tapu Road, Main Road, Station Road, Access Road, Coatesville, Riverhead Highway, Brigham Creek Road)	
		Existing bus stops	
		Auckland Cycle Network - Metro routes	
		Auckland Cycle Network - Connector routes	

Handwritten notes:
 Overlay Unitary Plan!
 Riverhead Structure Plan 2008
 Please make connection to Upper Harbour Gateway
 Not to Scale

Have your say to help create the world's most liveable city.
 For more information, email: greenwaysrodney@aucklandcouncil.govt.nz or visit www.aucklandcouncil.govt.nz/haveyoursay (keywords: Rodney Greenways)





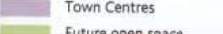
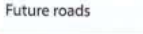

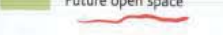



Where would you like walking connections?
 Draw or write on the map your ideas for walking connections

RODNEY GREENWAYS: KUMEU, HUAPAI, RIVERHEAD AND WAIMAUKU MAPS FOR SCHOOL CONSULTATION

KEY

 Schools (incl. kindergartens)	 Existing main roads	 Rail	 Walking routes
 Town Centres	 Future roads	 Future commuter train stations / Park + Rides	
 Future open space		 Existing bus stops	

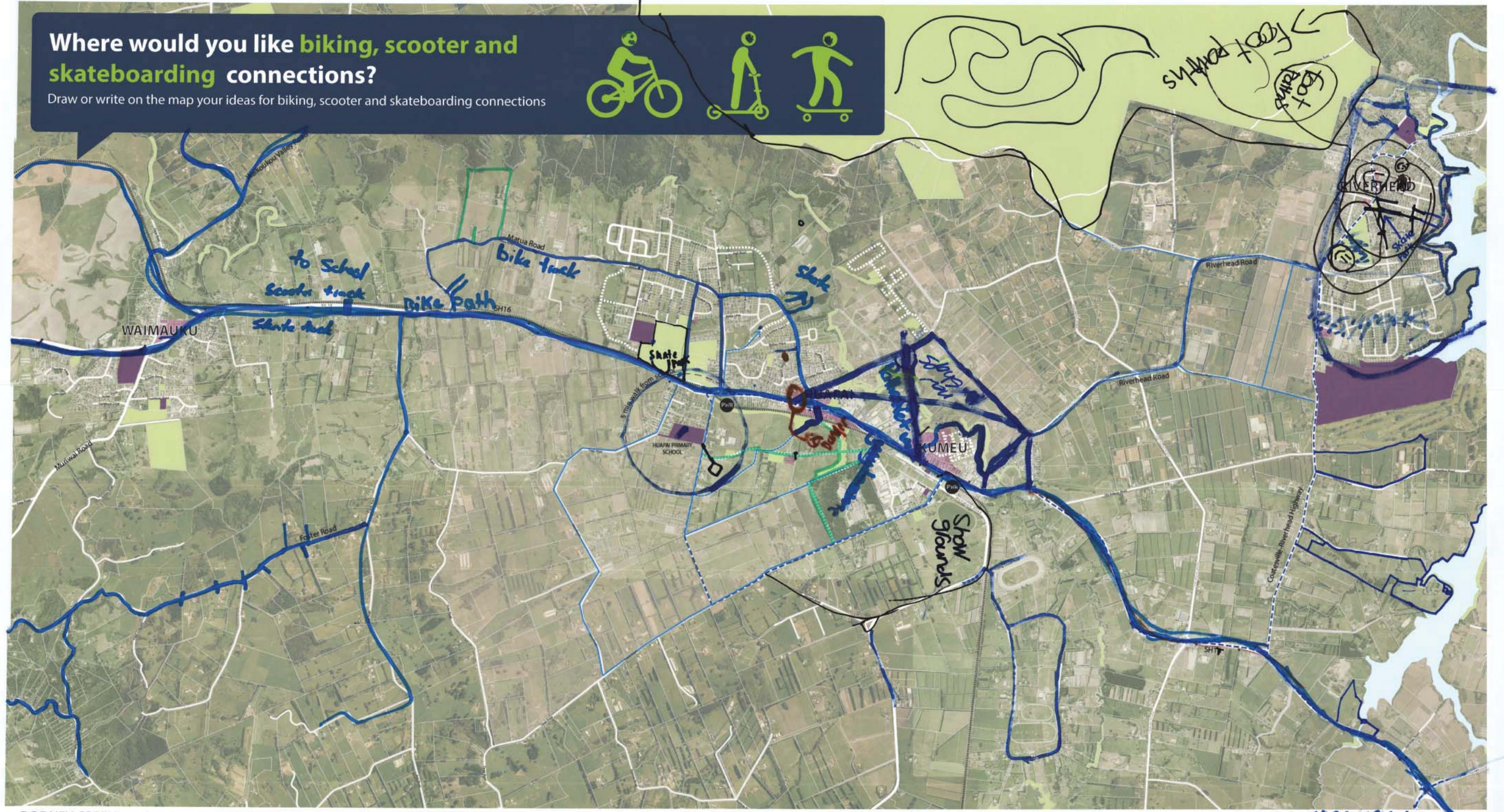
Handwritten notes: "Pg = Playground"



Have your say to help create the world's most liveable city.
 For more information, email: greenwaysrodney@aucklandcouncil.govt.nz or visit www.aucklandcouncil.govt.nz/haveyoursay (keywords: Rodney Greenways)



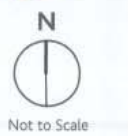
Where would you like biking, scooter and skateboarding connections?
 Draw or write on the map your ideas for biking, scooter and skateboarding connections



RODNEY GREENWAYS: KUMEU, HUAPAI, RIVERHEAD AND WAIMAUKU MAPS FOR SCHOOL CONSULTATION

KEY

Schools (incl. kindergartens)	Existing main roads	Rail	Auckland Cycle Network - Metro routes
Town Centres	Future roads	Future commuter train stations / Park + Rides	Auckland Cycle Network - Connector routes
Future open space		Existing bus stops	Cycle routes



Have your say to help create the world's most liveable city.
 For more information, email: greenwaysrodney@aucklandcouncil.govt.nz or visit www.aucklandcouncil.govt.nz/haveyoursay (keywords: Rodney Greenways)

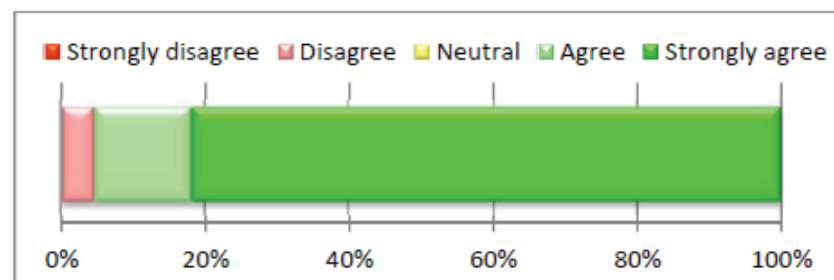


D6 Results from the Shape Auckland online survey

Q1 Creation of a Greenways Network for Rodney

Submitters were asked to respond to the statement - In principle, I support the creation of a greenways network for the Rodney Local Board
(22 responses)

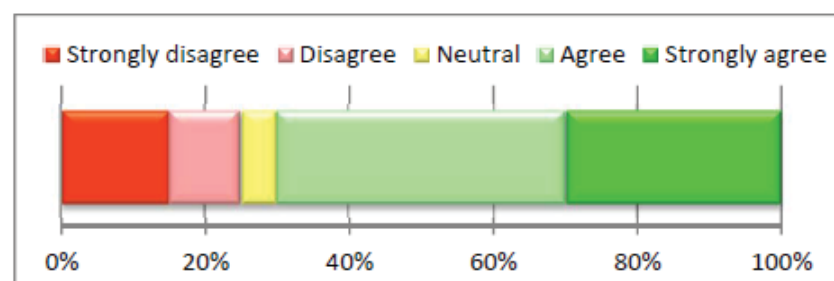
RESPONSES	
Strongly disagree	0
Disagree	1
Neutral	0
Agree	3
Strongly agree	18
Don't know/NA	0
Other comment	0
No response	0



Q2 Proposed routes

Submitters were asked to respond to the statement - The proposed greenways routes shown on the accompanying map are in the right place
(22 responses)

RESPONSES	
Strongly disagree	3
Disagree	2
Neutral	1
Agree	8
Strongly agree	6
Don't know/NA	2
Other comment	0
No response	0



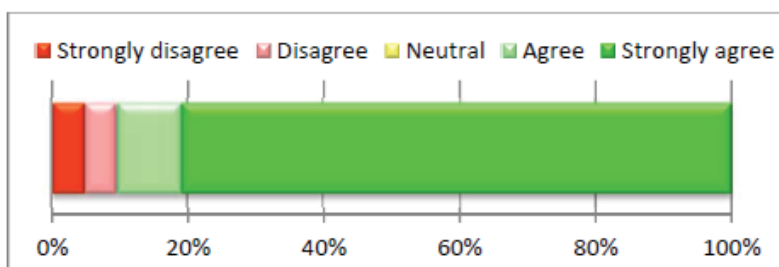
Q3 Additional routes

Submitters were asked - Are there any other routes or projects not shown on the draft map that you think should be included?
(12 responses - see attached extract for comments)

Q4 Creation of more walking and cycling connections

Submitters were asked to respond to the statement - Creation of more (or improved) local walking and cycling connections through reserves and along streets would encourage me to walk and cycle more overall
(22 responses)

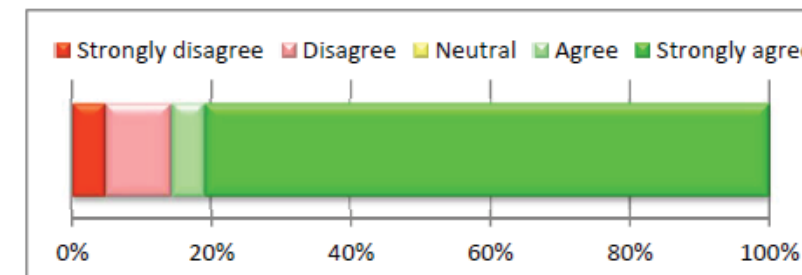
RESPONSES	
Strongly disagree	1
Disagree	1
Neutral	0
Agree	2
Strongly agree	17
Don't know/NA	1
Other comment	0
No response	0



Q5 Creation of more walking and cycling connections

Submitters were asked to respond to the statement - If more local (or improved) walking and cycling connections were created through reserves and along streets, I would likely use these to get to work, school, recreational facilities or to do shopping
(21 responses)

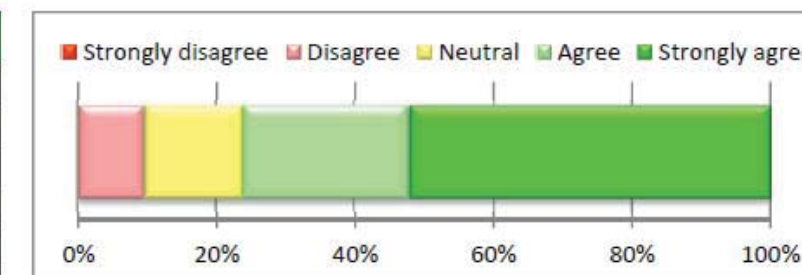
RESPONSES	
Strongly disagree	1
Disagree	2
Neutral	0
Agree	1
Strongly agree	17
Don't know/NA	0
Other comment	0
No response	1



Q6 Bridle connections

Submitters were asked to respond to the statement - I am interested in seeing bridle connections provided in the rural areas of our community and would like to see these specified in the Greenways Network plan
(22 responses)

RESPONSES	
Strongly disagree	0
Disagree	2
Neutral	3
Agree	5
Strongly agree	11
Don't know/NA	1
Other comment	0
No response	0



Q7 Prioritisation

Submitters were asked - Over the next 3-5 years, which connections would you like to see prioritised in the area and why?
(16 responses - see attached extract for comments)

Q8 Prioritisation

Submitters were asked - Do you have any other comments or suggestions on the Kumeu, Huapai, Waimauku and Riverhead Draft Greenways Network plan?
(9 responses - see attached extract for comments)

