

# Rodney Local Board Achievements report

November 2013 – June 2016





Clodagh and Finlay Bathgate enjoying the Kumeu Show

## Contents

Message from the chairperson	4
Rodney Local Board members	5
Rodney Local Board governance	6
• Working with the mayor and governing body	
• Local governance structure	
• Rodney Youth Advisory Panel	
• Deputations and public forum	
• Working with other local boards	
• Community partnerships	
Civic ceremonies	11
Local engagement	12
Local input into regional plans and bylaws	14
Long-term plan and annual plans	15
Local plans and bylaws	15
Local Board Plan 2014 - 2017	17
Outcome: roads, paths and public transport enable us to get around easily and safely	19
Outcome: parks and sports facilities are easy to access and enjoy	23
Outcome: communities are empowered and plan for their own futures	28
Outcome: our environment is healthy, cared for and enjoyed	30
Outcome: local halls and libraries are familiar, valued and well used community spaces	32
Outcome: local economies are strong and growing	35
Outcome: arts, culture and events enhance our communities and express who we are	36
Thanks	38
Appendices	39

Cover photograph: Matakana Playground

## Message from the chairperson

The Rodney Local Board has worked hard to galvanise the vision and priorities of Rodney Local Board Plan 2014 into actions on the ground. We have invested in projects and initiatives that ensure our growing communities have more places to safely play, be active, walk, live, work, do business, relax and enjoy their surrounds including access to pristine coastlines and harbours.

Originally the thought was to produce a simple report card of achievements and that double sided and two pages would cover it. Well, that has been impossible to produce when considering the sheer size of Rodney for a start, and the amount of different accomplishments not only delivered by council but alongside community groups which must be acknowledged and reflected in this document.

On behalf of the local board, I am extremely proud and excited to be sharing this achievement report with you on the development of Rodney as a part of Auckland. We have retained focus on the need to align decisions with the local board plan that is built on your valued feedback received through have your say events and submissions at the time.

Finally we are confident the initiatives we are delivering and continue to advocate for are making Rodney

a great place to live, work, study, attract business, visit and that these reflect the individual communities throughout Rodney.

We know you will enjoy reading this achievement report and should you require further information please make contact with us.

Brenda Steele  
**Rodney Local Board Chairperson**



## Rodney Local Board members

**Address:** Rodney Local Board, 50 Centreway Road, Orewa 0931

**Postal address:** Auckland Council, Private Bag 92300, Auckland 1142

**Email:** [rodneylocalboard@aucklandcouncil.govt.nz](mailto:rodneylocalboard@aucklandcouncil.govt.nz)

**Facebook:** [facebook.com/RodneyLocalBoard](https://facebook.com/RodneyLocalBoard)



Brenda Steele – Chairperson

M 021 283 5835

[brenda.steele@aucklandcouncil.govt.nz](mailto:brenda.steele@aucklandcouncil.govt.nz)



Beth Houlbrooke

M 021 839 413

[beth.houlbrooke@aucklandcouncil.govt.nz](mailto:beth.houlbrooke@aucklandcouncil.govt.nz)



Steven Garner – Deputy Chairperson

M 021 720 744

[steven.garner@aucklandcouncil.govt.nz](mailto:steven.garner@aucklandcouncil.govt.nz)



John McLean

M 021 114 9092

[john.mclean@aucklandcouncil.govt.nz](mailto:john.mclean@aucklandcouncil.govt.nz)



James Colville

M 021 243 1357

[james.colville@aucklandcouncil.govt.nz](mailto:james.colville@aucklandcouncil.govt.nz)



Phelan Pirrie

M 021 837 167

[phelan.pirrie@aucklandcouncil.govt.nz](mailto:phelan.pirrie@aucklandcouncil.govt.nz)



Warren Flaunty, QSM

M 021 287 1555

[warren.flauty@aucklandcouncil.govt.nz](mailto:warren.flauty@aucklandcouncil.govt.nz)

86 Red Hills Road, Taupaki, RD2, Henderson 0782



Greg Sayers

M 021 285 9900

[greg.sayers@aucklandcouncil.govt.nz](mailto:greg.sayers@aucklandcouncil.govt.nz)



Thomas Grace

M 021 464 446

[thomas.grace@aucklandcouncil.govt.nz](mailto:thomas.grace@aucklandcouncil.govt.nz)

1581 State Highway 16, Woodhill RD2,  
Helensville 0875



Rodney Local Board

## Rodney Local Board governance

The Rodney Local Board has worked together to achieve progress in the areas of priority determined by the community through the Rodney Local Board Plan 2014. This has required close working relationships with various council departments and council controlled organisations (CCO's).

### Working with the mayor and the governing body

The local board has valued the attendance of Councillor Penny Webster at their public business meetings. This has provided an opportunity to share regional matters of relevance.

Over the term the local board has taken many opportunities to voice their views and present to the governing body on matters such as the long-term plan, annual plans and a range of regional policies that affect Rodney people. They have also welcomed the mayor and councillors to their business meetings throughout the term. Building these relationships has enabled the local board to advocate strongly for Rodney communities.

The local board were pleased to be able to take Mayor Len Brown on a tour of Rodney early in the term to show him some of the outstanding spaces we have in Rodney. It was an opportunity to see first-hand what we have been raising with him including failing community hardcourts, lack of road sealing, poor maintenance of rural roads, development pressures and facilities and infrastructure not coping with the growth. The Mayor was also able to meet a few locals along the way.



Mayor Len Brown at Warkworth Library

Throughout the term the governing body confirmed a number of appointments as follows:

### Appointments by the governing body involving local board members

Parakai Recreation Reserve Board*	Brenda Steele and Phelan Pirrie
Kaipara Harbour Joint Political Committee	Brenda Steele
Representation Review Political Working Party	Brenda Steele
Kaipara Moana Joint Working Party	Brenda Steele
Local Government – Northern Action Group – Working Party	Brenda Steele

\* Note: This board is an entirely separate entity to the Rodney Local Board and does not report to the Rodney Local Board.

The individual local board members continue to represent Auckland Council on these groups.



Brenda Steele and Penny Webster

## Local governance structure

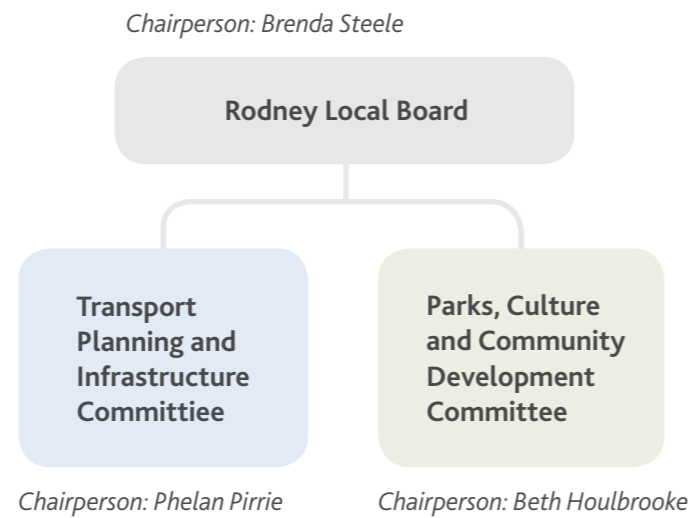
Early in the electoral term the local board's governance structure was based around all decisions being made by the local board at its monthly business meetings. Three workshops were held each month and members held one or more of the 17 portfolios such as parks, economic development, arts and environment.

Towards the end of the first year of the term the local board decided to create a new structure which would be more inclusive and streamline decision making to enable decisions to be made quicker. The new structure as demonstrated below established two new committees, the Transport Planning and Infrastructure Committee (TPI) and the Parks, Culture and Community Development Committee (PCCD), each with a different chairperson. All portfolios except resource consents (held by Steven Garner and Warren Flaunty) were disestablished. These are committees of the whole which meet every two months while the full local board continues to meet monthly.

The Rodney Local Board makes decisions on the wider strategic documents including the Rodney Local Board Plan, setting local budgets and confirming advocacy through the Annual Plan – Rodney Local Board Agreement. While the committees are delegated to deal with specific matters including the approval of work programmes. The specific set of matters each committee deals with are indicated by the titles of the committees.

Since November 2013 the local board has held 43 public business meetings (including nine TPI and seven PCCD committee meetings) and 104 workshops (62 full board, 20 TPI and 22 PCCD).

Given the significant geographical size of Rodney, the local board hold their business meetings away from the usual venue of the Orewa Council Chambers twice a year. Over this term venues have included 2013 Wellsford (inauguration), 2014 Warkworth and Muriwai, 2015 Te Hana and Coatesville and 2016 Whangateau.



In addition to the business meetings many members are appointed to external organisations as outlined below:

### Appointments to external organisations

Redvale Landfill Community Liaison	John McLean
Health Link North Representative	Greg Sayers
NZ Police (Rodney) Tactical Co-Ordination Team Representative	Steven Garner alternate James Colville and Greg Sayers
Local Government NZ (LGNZ) Zone 1 Representative	Brenda Steele
Puhoi Community Forum	Beth Houlbrooke, alternate Steven Garner
Kawau Island Liaison Group	Brenda Steele and Steven Garner

This term the Kawau Island Liaison Group have been very active in working with the local board and Auckland Transport during changes to the charges at Sandspit carpark.

Members are also appointed to internal working groups as follows:

### Appointments in internal council working groups

Forestry Liaison Group Representative	Steven Garner
Rural Advisory Panel	Thomas Grace, alternate James Colville
Rural Industrial Group	Thomas Grace, alternate Steven Garner and Phelan Pirrie
Committee Representative Drainage Board (Te Arai, Okahukura (Tapora) and Glorit)	James Colville
Urban Design Champions	Brenda Steele, alternate Phelan Pirrie
Community Assistance Future Funding Model	Brenda Steele
Local Board Funding Policy Representative	Phelan Pirrie
North West Community Liaison Group	Brenda Steele
Professional Development Working Group	Brenda Steele
Norsga SPA Project	Brenda Steele



Local board plan engagement in Kumeu



Rodney Local Board members with Savanna Steele and Savannah Cox

### Rodney Youth Advisory Panel

The Rodney Youth Advisory Panel was established in the first term of the local board. This panel has worked together on projects affecting youth in the Rodney area. The local board were pleased to recognise the work undertaken by those standing down including Chair Savanna Steele and the appointment of a new Chair Savannah Cox. The local board are now investigating new ways to ensure youth have a say in local matters.

### Deputations and public forum

The local board welcome deputations and public forum items at its business meetings. These are a 3–10 minute opportunity to present to the local board on any topic that someone feels the local board need to be aware of. Over the term the local board has received 111 presentations (refer to Appendix 1). The presentations have been a great opportunity for the community to garner support for their community-led projects, clearly outline views or make the local board aware of community concerns.

The topics raised with the local board have varied widely from freedom camping at Snells Beach to set netting in Omaha and Special Housing Area's in Huapai. The North West BID has provided a number of useful updates as have many residents and ratepayers groups such as Coatesville, Riverhead and Baddleys Beach/Campbells Beach. Transport concerns including

Hill Street in Warkworth and public transport in Kumeu were also raised. The local board also welcomed updates on projects such as the Kumeu Arts Centre and the Helensville Arts Centre.

### Working with other local boards

Rodney Local Board is clearly unique in Auckland due to its extensive landmass and large number of independent communities. However, the synergies of working with other local boards dealing with similar challenges has been recognised. With this in mind, the local board continues to meet with Franklin Local Board to discuss ways of advocating for rural issues including recognising challenges that our halls and reserves advisory committees are facing. The local board has also met with Waitākere Local Board to understand their environmental programmes and determine if there are lessons to be learned.

Presenting to the governing body during the annual plan has historically had limited success. Last year the local board got together with the five northern boards to outline key operational issues and clarify how they would like to see the organisation step up.

Early in the electoral term, the Northern Joint Funding Committee was established to allocate legacy council grant funding with the Rodney Local Board working alongside Hibiscus and Bays Local Board and other northern local boards.

### Community partnerships

As Brenda Steele states in her chairperson's message from the local board plan, "If you take one thing away from this plan, I hope it is that we want to support and help communities to help themselves." This theme of delivery has continued through the long-term plan budgets and a way of working with council staff and community in partnership. The local board has faced challenges but continues to encourage this way of working. A few examples are:

#### Parks volunteers

The natural environment and walkways have proven to be a high priority to Rodney people and people and budgets have been put in place to support community-led environmental and volunteer initiatives. As we see greater uptake and participation, these budgets are increasing. There is interest in creating and linking walkways and a large portion of the local board's grant funds allocated towards planning and constructing these important assets.

#### Warkworth Town Hall Trust and Committee

The local board are immensely grateful to the hard work and dedication that the Warkworth Town Hall Restoration Trust and the fundraising group have put into the design and fundraising for the town hall. Without their drive and the partnership created; the project would not have got as far as it has.

#### Mahurangi Sports and Recreation Collective

Mahurangi Sports and Recreation Collective has continued to partner with the local board to develop the Warkworth Showgrounds and a future multisport building on the site. The local board has been impressed with the practical and pragmatic approach taken by the collective in ensuring that everyone who wants to be involved has the opportunity and how they have taken the time to ensure that their final vision is cohesive and will stand the test of time. This long term partnership with council continues to strengthen.

#### North West Business Improvement District

Having established a successful business improvement district, the local board has been pleased to be able to continue their support through initiatives and projects. The North West BID team are another example of passionate local business people wanting to see their area promoted in a cohesive way for the betterment of everyone in the area. The local board look forward to continuing their support of the BID.

### Civic ceremonies

The local board participates in and represents Rodney residents at several key civic ceremonies within the Rodney Local Board area: These include:

**Northern area citizenship ceremonies:** Jointly hosted by Hibiscus and Bays Local Board and Rodney Local Board at the Orewa Arts and Events Centre. Local board members are actively involved in these ceremonies. We have had 18 ceremonies this term.

**Anzac Day ceremonies:** Ceremonies across Rodney are attended by local board members representing the local board. Over the term the local board have been regularly represented at Helensville, Leigh, Parakai, Riverhead, Upper Waiwera, Waimauku, Warkworth, Wellsford, Coatesville and Kaukapakapa. The local board are pleased to see Anzac Day flags flying in Warkworth and Helensville.

**Volunteer awards:** The local board presented awards to acknowledge the contribution of volunteers across the community by hosting an awards ceremony and celebration to acknowledge these worthy individuals.

**Scholarship awards:** Members presented students from Mahurangi, Rodney and Kaipara colleges their awards at school prizegivings.

**Royal Humane Society of NZ Award:** Royal Humane Society Bronze Medal Award was presented to Mr Owen Woodhouse, and the Certificate of Merit presented to Mr Lawrence Woodhouse by the local board and Constable Steve Nicoll of the New Zealand Police.

Ko ngā manu a te Mahurangi - Birds of the Mahurangi.  
Artist Ruby Watson with Brenda Steele.





ANZAC service in Riverhead

**Other openings, ceremonies and celebrations:**

Several major projects were blessed by local iwi and celebrations of completion or progress occurred. These include:

- Blessing of the Ngati Whatua Nga Rima Housing Initiative, Helensville
- Unveiling of the Warkworth Clock Tower following mosaic work.
- Blessing of the art work 'Birds of the Mahurangi' by Ruby Watson
- Warkworth Town Hall Restoration Launch
- Warkworth Showgrounds milestone celebration with the Mahurangi Sport and Recreation Collective with the opening of the new netball courts, hockey turf, playground and toilets.
- Matakana Playground opening celebration and blessing
- Blessing of the Helensville War Memorial Hall basement refurbishment.

**Local engagement**

Public engagement is an essential part of how the local board reaches decisions on priorities, projects and positions for the region. Over the term the community was consulted on a number of significant projects including:

- **Local board plan:** Two large community expos were held in Warkworth and Kumeu. Community groups and council departments and CCO's were asked to come along and show everyone what they were working on. These were great events with presentations and workshops. Further sessions on the draft document were then held in Rodney's four main centres.
- **Long-term plan and annual plan:** Engagement sessions on the long-term plan and annual planning cycles occurred each year to assist the local board to understand community priorities.
- **Aquatic Centre Survey:** A survey was undertaken to understand community views in relation to the need for a swimming pool facility in north Rodney.
- **Boat Ramp Launching and Mooring Facilities Survey:** This survey was undertaken to inform the local board on whether there is a need to improve water access and connected facilities for boat users in Rodney.
- **Old (former) Wellsford Library:** Several consultation sessions over the term were held to assist the community with retention of this building for community uses.
- **Community placemaking:** Community-led planning was encouraged and supported through community workshops at Leigh and Parakai.
- **Playspace engagement:** In partnership with the parks team at council, various local consultations occurred seeking local views on play equipment including skateparks.
- **Atlas Site Concept Plan:** In order to prepare a plan for the future reserve adjacent to the Warkworth Showgrounds known as the Atlas site, hands on workshop style engagement was undertaken.
- **Wellsford greenways:** Community views were sought via a drop in session on priority



Local Board Plan Expo in Kumeu

greenways for walking and cycling in the Wellsford area before completing the final plan.

- **Community views Kumeu-Huapai:** A resident's survey was undertaken and workshop style engagements were held to seek community views and aspirations relating to the Kumeu Huapai area prior to a centre plan being prepared for the area.

- **Rural halls project:** A series of meetings for halls and reserves advisory groups and other interested parties were held throughout Rodney in an effort to determine a future structure(s) for rural halls groups.
- **Rural lifestyle farm rates meetings:** The local board hosted a series of very well attended public meetings run by Councillor Bill Cashmore from Franklin which proposed a new rates model for rural property owners.
- **Future Urban Land Supply Strategy:** A series of extremely well attended meetings were held on the proposed strategy which sets out the order in which land is supplied for development over the next 30 years.
- **Transport for Future Urban Growth:** Auckland Transport, Auckland Council and the NZ Transport Agency (NZTA) combined to run a series of engagements on the future transport network to support Auckland's new housing and business areas. These were supported by the local board.



Wellsford Greenways Plan engagement

## Local input into regional plans and bylaws

Advocacy is a key part of the role of the local board, ensuring that regional plans and policies are relevant at a local level. This term there has been a significant amount of time put in to providing feedback into regional plans, policies, strategies, bylaws, submissions to central government and other matters:

- **Plans**
  - Arts and Culture Strategic Action Plan
  - Local Board Funding Policy
  - Community Facilities Network Plan
  - Environmental Strategic Action Plan
  - Auckland Civil Defence Emergency Management Group Plan
  - Te Muri Reserve Management Plan
  - Hauraki Gulf Waste Plan
  - Sports Facilities Investment Plan.
- **Policies**
  - Business Improvement District Policy Review
  - Community Grants Policy
  - Development Contributions Policy
  - Local Government Election Year Policy
  - Heritage Incentives Policy
  - Local Alcohol Policy
  - Local Approved Product Policy
  - Local Board Funding Policy
  - Significance and Engagement Policy
  - Local Government Election Year Policy.
- **Strategies**
  - Regional Pest Management Strategy.
- **Bylaws**
  - Alcohol Control
  - Construction and Development
  - Signage
  - Trading in Public Places
  - Property Maintenance and Nuisance
  - Transport Controls

- Water Supply/Wastewater
- Set Netting.
- **Central Government bills (feedback into Auckland Council submission)**
  - Building (Pools) Amendment Bill.
- **Other**
  - Auckland Transport Draft Parking Discussion Document
  - Auckland Transport Draft Land Transport Plan 2015-2025 Project List
  - Variations to the Regional Public Transport Plan
  - Auckland Transport Public Transport – Simplified Zone Fares
  - Auckland Transport Regional Land Transport Plan (RLTP) 2015 – 2025
  - Transport for Future Urban Growth Project (TFUG)
  - Guidelines for Private Planting in the Road Corridor
  - Open Space Provision Guidelines
  - Special Housing Areas
  - Council Controlled Organisations Review
  - Chief Executive Officer Review
  - Standing Orders Review.

Of particular importance over the term were the Community Facilities Network Plan due to the need to ensure that we have future facilities included, the Local Board Funding Policy to ensure that Rodney has a fair share of capital funding due to our isolation and deprivation statistics. On both these fronts the local board made significant progress and their unique circumstances were recognised. The third area of particular importance and focus for the local board was on transport strategies and plans including the RLTP and TFUG. The local board recognised the need to ensure that key transport projects are included in these documents and funding allocated going forward. This focus began early in the term with a very direct presentation to the Auckland Transport Regional Transport Committee hearing submissions on the RLTP.

## Long-term plan and annual plans

For each financial year, Auckland Council must have a local board agreement between the governing body and the local board. Most years this agreement forms part of the council's annual plan, however, every third year it forms part of the long-term plan review. In 2015, the local board took part in the preparation of council's second long-term plan.

## Local plans and bylaws

The local board has undertaken research and produced a number of plans as follows:

### Local board agreements

In June 2016, the Rodney Local Board adopted its sixth local board agreement with the governing body, which forms part of the Auckland Council Long-term Plan 2015-2025. The local board agreement delivers on the priorities set in the Local Board Plan 2014 and shows the intended provision of local projects and allocated funding.

### Northern Boat Ramps Research

The objective of this project was to understand how existing boat launching facilities were used and where they could be improved. An online questionnaire and a survey were promoted and respondents targeted through council publications and boat clubs. A total of 515 surveys were completed.

### Needs Assessment for Swimming Pool Provision in North Rodney

More than half (423) of the submissions on the Rodney Local Board Plan 2011 requested a swimming pool in the north Rodney area. A needs assessment was completed to understand current behaviour of north Rodney residents' use or non-use of swimming pools and their potential use of swimming pool facilities. The local board are now proceeding with the next phase of planning and development with a focus on partnerships.

### Atlas Site Concept Plan

The Atlas site is a future reserve adjacent to the Warkworth Showgrounds. The purpose of the concept plan is to guide future development of the site, ensuring that it caters for the community's needs and aspirations. The concept plan was prepared after community consultation on two draft plans.



Atlas Site, Warkworth Concept Plan



Wellsford Greenways Plan



### Rodney Dog Access Bylaw Review

In 2015, several local boards made changes to where and when people can walk their dogs. Proposed changes were publicly notified for submissions in June 2015. Public hearings and deliberations were held from August to October and final decisions on changes were made. Changes came into effect on 24 October 2015 for the Rodney Local Board area.

### Rodney Economic Development Action Plan

An economic development action plan was completed in 2015. The objective of this document was to guide economic development actions in the Rodney Local Board area to facilitate engagement between the local board and those delivering on economic initiatives.

### Wellsford Greenways

The Wellsford Greenways plan outlines long-term priority walkways and cycleways for the Wellsford area. It is a guiding document for both council and community to use.

### Kumeu/Huapai and Warkworth greenways plans

Following the completion of the Wellsford Greenways plan the local board has now commenced a two year plan to compile greenways plans for Kumeu - Huapai - Riverhead - Waimauku area and also for the Warkworth - Snells Beach - Algies Bay - Matakana area.

### Identifying community aspirations in Kumeu- Huapai report

This report provides an analysis of findings from four community meetings and a resident's survey conducted in Kumeu and Huapai in late 2015. The area was also audited and scored in terms of its key/attributes. This project aims to provide a understanding of community views and aspirations for the area prior to the completion of a centre or structure plan for the area.

### Toolkit for community action planning

This community toolkit was developed to enable Rodney's communities to plan how to improve their villages, towns and communities. It explains what an action plan is, why you may want one and how to go about planning for community projects.

### Kumeu Arts Needs Assessment

The Kumeu Arts Needs Assessment was completed in 2015. The assessment identifies the needs of communities in the Kumeu - Huapai area for arts in the

short to medium term, and provides the local board with options to address identified needs. In particular the needs assessment looks at the facility of the Kumeu Arts Centre as the only council funded facility dedicated to arts delivery in the catchment area.

### Kumeu Arts Centre feasibility study

Following a recommendation in the Kumeu Arts Needs Assessment, a feasibility study is being carried out to consider options for the expansion of the Kumeu Arts Centre. This is expected to be completed by June 2016.

### Community Grants Policy

The first Rodney Community Grants Policy was completed this term to guide decision-making and community applications for local grants in Rodney. The focus of this policy is on implementing the vision of the Rodney Local Board Plan 2014.

### Warkworth Multisport business case

As a part of the partnership with the Mahurangi Sport and Recreation Collective, the local board has funded the preparation of a business case which will re-test feasibility, consider concept designs, site options, staging and costings.

### Needs assessment for indoor sports facilities in west Rodney

A needs assessment of indoor sport and recreation facilities in Huapai, Kumeu, Riverhead and Helensville is currently underway. The council is also assisting community groups who are ready to proceed with planning for facilities.

## Local Board Plan 2014-2017

In July 2014, the Rodney Local Board released the draft local board plan for public consultation. The local board received 396 submissions which they deliberated on at its September 2014 business meeting. The final plan was adopted by the local board in October 2014. The local board plan sets out a three year foundation for planning, action and advocacy for Rodney.

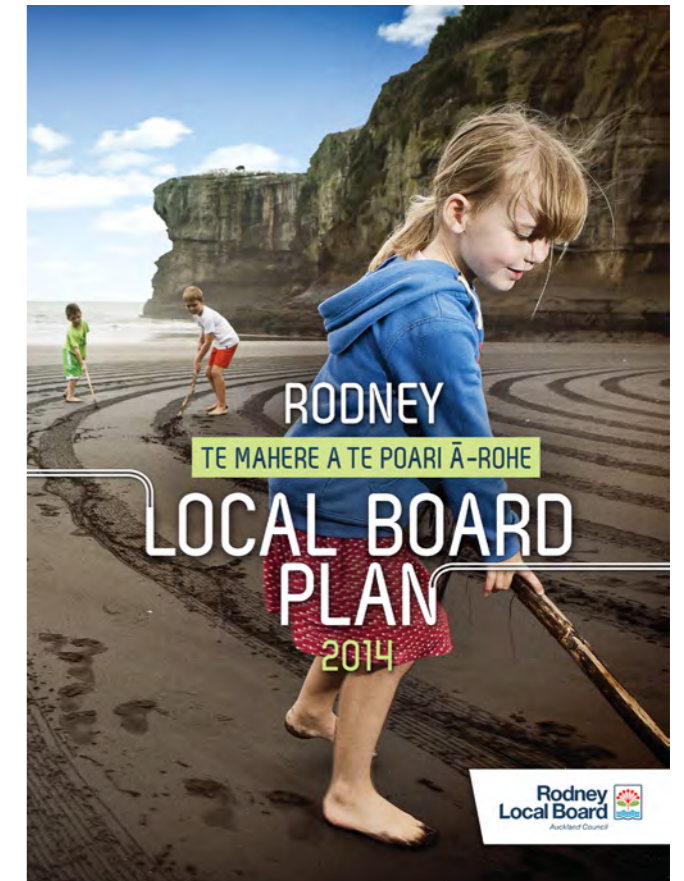
It provides a basis for working towards creating the world's most liveable city at the local level, and aims to achieve the following identified outcomes:

### Rodney local board plan outcomes

The achievements in this report are outlined under the relevant local board plan outcome:

- **Roads, paths and public transport enable us to get around easily and safely.**  
Our communities will be well connected by transport links and have a range of transport options available to them.
- **Parks and sports facilities are easy to access and enjoy.**  
Our communities, young and old, will have increased access to a wide range of recreation opportunities for health, wellbeing and employment.
- **Communities are empowered and plan for their own futures.**  
Our communities know what they want for their futures. Local people will plan for their outcomes and determine what is important.
- **Our environment is healthy, cared and enjoyed by all.**  
Local community groups take ownership in the quality of their environment. River and storm water quality will be improving, pest species reduced and waste minimised. Our wastewater servicing will be reliable and environmentally friendly.
- **Local halls and libraries are familiar, valued and well-used community spaces.**  
Our halls and libraries meet the needs of local communities. They are highly valued, welcoming, friendly spaces in which local residents take pride and have a sense of ownership.
- **Local economies are strong and growing.**  
Our local economy will strengthen and business will thrive through working together. A growing economy will provide more jobs for local people.

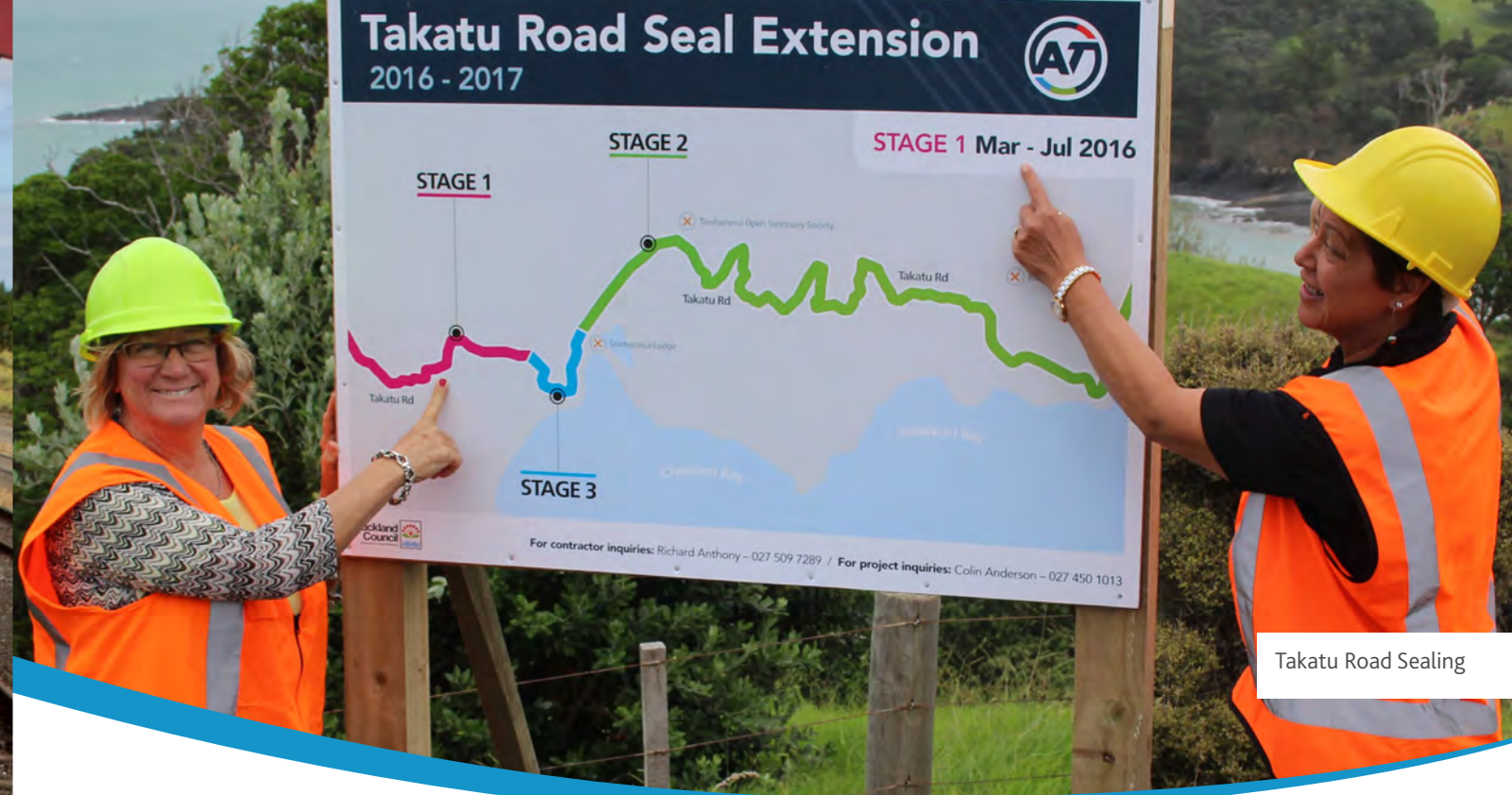
- **Arts, culture and events enhance our communities and express who we are.**  
Our communities will celebrate, learn and grow through arts, culture, events and a variety of community-led initiatives. These activities will strengthen communities, provide opportunities for people to connect with each other and build a sense of pride.



Rodney Local Board Plan 2014



Sandy Wishart, Alan Hargreaves, Grant Griffin in front of the Helensville Railway Museum.



Takatu Road Sealing

## Outcome: roads, paths and public transport enable us to get around easily and safely

Our communities will be well connected by transport links and have a range of transport options available to them.

Transport is the number one issue for Rodney residents. The local board heard this loud and clear in our engagements with the community.

### Key transport advocacy points

The local board advocate to Auckland Transport, NZTA and the governing body of the council regarding transport matters. In order to focus this advocacy the local board determined the top five advocacy points:

#### Local board plan key initiatives and advocacy

Advocate for \$10 million per year for 10 years for sealing roads in Auckland

Build footpath and cycleway extensions in and between towns and villages to provide connectivity

Complete Warkworth roading projects including Hill Street intersection and the Western Collector, urgently complete the Mansel Drive bridge and plan and schedule the McKinney Road intersection upgrade

Provide regular public transport services throughout Rodney

### Road Sealing

One of the local board's most important projects to date has been advocating for more funding for rural roads and they are delighted that as a result of their efforts the governing body requested Auckland Transport re-prioritise an additional \$1million per year for the first three years of the LTP for the sealing of rural roads. This brings the total road sealing budget to \$10 million over the next three years (excluding the Araparera Targeted Rate funding). Matakana Valley Road was sealed this term and Takatu Road sealing is underway.

### Footpaths and Cycleways

The provision of adequate footpaths in the Rodney area is a major challenge. The local board continues to advocate to Auckland Transport for the construction of footpaths. This electoral term the Coatesville Riverhead Highway (Edward Street to Kaipara Portage Road) and 8-20 Totara Road Leigh are being constructed. This is likely to be followed by Mason Heights, Woodcocks Road, Warkworth.

Communities have told the local board that footpaths are extremely important and so the local board

allocated \$2 million over three years from its local budget to construct these. These paths are still in the prioritisation and planning phase.

### Warkworth roading projects

Hill Street and the Western Collector route in Warkworth continue to be a key point of advocacy for the local board. This term we have seen NZTA undertake some roading improvements and lane widening. We still await the major upgrade of Hill Street intersection. The footpath to Hudson Road from Hill Street has been completed.

The contract for the first stage of the Warkworth Western Collector, the Mansel Drive to Falls Road link road, has been awarded to Wharehine Construction. With all consents, land purchase and funding in place it is likely that construction will begin soon and be completed in approximately 10 months.

### Public transport

Public transport has continued to be a priority for the local board. Feedback on the Regional Public Transport Plan, the Hibiscus Coast/Warkworth bus network review and the Transport for Future Urban Growth meetings have provided regular opportunities to continue to explain the need for safe regular alternatives to vehicles. Connections in particular for young, old and commuters to the city have been constant points of discussion. Local bus services and Kumeu rail services are also often raised by Rodney residents. The local board were pleased to see the

Footpath construction Maude Road, Riverhead

Kowhai Connection local bus service in the north supported by Auckland Transport. The next review of regional bus services from Warkworth to Silverdale will occur in 2017.

### Local board transport fund

In addition to advocacy matters the local board has a share of the Local Board Transport Capital Fund available for small transport projects. This term the fund was allocated to the following projects:

- Footpaths at the following locations:
  - Mahurangi East Road, Snells Beach, from Arabella Lane to the existing footpath
  - Oaia Road, Muriwai
  - Extension on Fordyce Road, Parakai
  - Coatesville-Riverhead Highway from Elliot Street to the bridge
  - Mahoenui Valley Road opposite the school to Coatesville-Riverhead Highway
  - Rodney Street, Wellsford
  - Point Wells Road, from Waimanu Place to 30-32 Point Wells Road
  - Maude Street, Riverhead
  - Great North Road, Riverhead
  - Approved in principle completion of a footpath over reserve land at Riverhead Point, Riverhead.
- Puhoi pedestrian bridge and footpath extension.

- Mountable kerb outside 336 Mahurangi East Road, Snells Beach.
- Construction of local access road improvements, 338 – 382 Main Road, Huapai.
- Extending the loose metal bridle trail on the northern side of Coatesville-Riverhead Highway from east of Glenmore Road to 264 Coatesville-Riverhead Highway.
- Installation of a seat in front of the property at 6 Alexander Road, Algies Bay.
- Construction of 20 parking bays by Cabra Developments to improve the new road frontage between Huapai Reserve and the adjacent housing development.
- Pedestrian footbridge, Leigh Road Matakana received a significant portion of funding from the local board and was supported by Auckland Transport following community efforts advocating for this link. The initial stage of the works for the bridge have commenced.

### Other Transport Matters

- **Waimauku Roundabout:** The construction of this intersection in Waimauku was confirmed this term and funding allocated. Due to property acquisitions the construction has been delayed but is expected to be underway in late 2016.
- **Transport planning Kumeu/Huapai/Riverhead:** AT and NZTA continue to work collaboratively on transport solutions for the Kumeu Huapai area, most recently through the public consultation on the Transport for Future Urban Growth project.
- **Ara Tūhono – Puhoi to Wellsford:** This NZTA project, part of the roads of national significance programme, is well into the planning, land acquisition stages and subject to contracts and other matters and construction could start later this year with a completion date of 2022.
- **Matakana Link Road:** The importance of this connection to ease increasing heavy traffic from east of Warkworth continues to be a point of advocacy. At this point in time the local board have been advised that the Western Collector takes priority. However, recent consultations regarding transport for future growth may result in funding being made available in future years.
- **Tapu Road/Station Road/SH16 intersection realignment:** The upgrade of this intersection

has secured funding as part of the \$9.9 million allocated to Kumeu/Huapai for roading improvements to address the significant growth in the area resulting from Special Housing Areas. The estimated completion date for this work is late 2018.

- **Access Road/SH16 Kumeu intersection upgrade:** These works are a part of roading improvements mentioned above.
- **Parakai to Helensville footpath:** The footpath has been resealed and general maintenance completed after advocacy by the community and the local board.
- **Vehicles on beaches:** After a tragic year of accidents on Muriwai Beach the local board lobbied council's Parks, Recreation and Sports Committee and worked with regional parks management to get an improved safety programme for the beach over summer. The new permit system offers an opportunity to educate vehicle users and ensure everyone using the beach can do so safely.





## Outcome: parks and sports facilities are easy to access and enjoy

Our communities, young and old, will have increased access to a wide range of recreation opportunities for health, well-being and enjoyment.

Improving local parks by upgrading assets and undertaking improvements requested by local communities has been a significant programme of work for the local board. Thanks to the dedication of local parks officers and their willingness to collaborate with the local board we have seen a huge amount of projects delivered over the term. Many of the projects completed this term were planned in the first term of the local board. The following should give you an idea of the scale and flavour of these projects:

### Warkworth Showgrounds

#### Warkworth Showgrounds development:

The development of the Warkworth Showgrounds has moved ahead in leaps and bounds this term. The playground has been moved and upgraded, a new toilet has replaced the old one and new netball courts constructed. Shortly the onsite wastewater system will be finished, the perimeter path constructed, sports field and court lighting installed and all carparks sealed with lighting and landscaping. This has been a significant project for the local board which, can now realise sporting priorities in the north.

**Warkworth Multisport:** The local board have partnered with the Mahurangi Sport and Recreation Collective to provide officer support and advice to assist community efforts to establish a multisport facility on the showgrounds. The various sports groups are working together on a joint council/community vision for a future multisport facility through a business case funded by the local board. Given the amount of planning and fundraising required, it is clear that this project will be a few years off completion so the council has supported requests to assist with funding for public toilets within the existing rugby club building. This is as an interim solution before the building is removed and the multisport facility constructed.

Monte Neal, Gary Moss and Phelan Pirrie at Huapai Perimeter Path, Huapai Reserve



Warkworth Showgrounds Courts

### Walking tracks and plans

**Walking tracks:** The desire for walking tracks is huge in Rodney so this term the local board were pleased to complete the following; Huapai Reserve perimeter path, Whangateau footbridge, Te Whau track Snells Beach, Helensville Creek Lane path, Sandspit boardwalk upgrade, Ahuroa Reserve school track and the Omaha Quarry track.

**Greenways plans:** The Wellsford Greenways plan was completed this electoral term as mentioned earlier in this report and Kumeu/Huapai/Riverhead/Waimauku and Warkworth plans are underway. These plans provide an excellent guide to priority areas for walking and cycling development in Rodney.

### Playspaces

**Matakana Playground:** The local board is pleased that the Matakana Riverbank Playground is now open, this being the only new playground in Rodney this term. The playground started as a community initiative in the previous term and has involved a lot of consultation with youth and other members of the community.

**Playground renewals:** Many playgrounds have been renewed and enhanced this term. The difference being that the local board and parks staff have consulted with local communities on each playground. The results have been outstanding. Take a look at these examples; Algies Bay, Snells Beach (Sunrise Boulevard), Omaha (Excelsior), Warkworth Showgrounds, Matheson Bay and Wellsford War Memorial Reserve.

**Skate ramps:** Skate has proved a popular pastime for many young people in Rodney this term and the local board is pleased with the installation and upgrading of skate facilities in Riverhead Reserve, Huapai Reserve and the Muriwai Village Green.

**Challenging playspaces:** Challenging playspaces is a new initiative introduced this term after youth presentations to the local board stating that playgrounds were too 'cookie cutter', and not challenging enough for older kids who wanted to take a little bit of 'risk'. This budget has gone to enhancing existing playspaces with more challenging equipment for older children. So far the local board has focused on Leigh, Te Hana and Helensville.



Greenways Engagement, Wellsford



Josh McLeod and Henry Davis at Riverhead Skate Ramp



Matakana Playground opening



Snells Beach Playground



Coastal Seawall Algies Bay



Highfield Garden Reserve, Snells Beach

### Hardcourts

It became very apparent in the first term of council that Rodney had a lot of historic community hardcourts in significant state of disrepair. The local board is doing everything it can within available budgets to re-open these courts and construct them well so that they last. The Whangateau courts were recently completed and the Puhoi courts are underway. These are in addition to the new netball courts at Warkworth Showgrounds.

### Sports fields

A clear directive in the local board plan is "We want to improve fields so they don't have to close in winter and install floodlights on fields so we can train later." This is underway with both lighting and sports field improvements to Shoesmith Reserve, Huapai Reserve, Wellsford Centennial Park and Warkworth Showgrounds and lights installations at Rautawhiri Reserve and Riverhead War Memorial.

### Coastal works

**Coastal erosion protection:** Coastal erosion works are a technical matter and various methods and techniques are used to protect our coastal margins. This term the focus was on Algies Bay, Snells Beach, Campbells Beach, the Omaha Groyne and Matheson Bay.

### Toilets

**Toilet renewals:** The local board plan states that our toilets need some 'love and attention'. This has been a focus for the local board. Wellsford Mainstreet toilets have been upgraded, a new toilet block constructed at the Warkworth Showgrounds, Whangateau Reserve toilets upgraded (next to the courts) and a feasibility study undertaken to consider options for the Kowhai Park Reserve toilets. The Kumeu toilets should be upgraded by the end of this financial year and the local board continue to advocate for funds for Warkworth Town Centre toilets.

### Carparks

**Carpark renewals:** Works have been undertaken at Muriwai Village Green, Wellsford Centennial Park, Kaukapakapa Hall and Recreation Reserve and Port Albert Wharf Reserve.



Working on Greenways Plan Wellsford



Volunteers Kowhai Park, Warkworth

### Memorandum of Understanding at Highfield

**Highfield Reserve Memorandum of Understanding (MoU):** An MoU was signed with the Highfield Donkeys Incorporated and the local board this term to ensure that the donkeys can remain on the reserve in perpetuity and to recognise the relationship between council and the trust.

### Other works

**Reserve water supply:** Improvements have been carried out at Whangateau Reserve, Mangakura Reserve, and Sinclair Park improvements are underway. These reserves are reliant on on-site water supply.

**Wharf renewals:** Works were undertaken at Port Albert and Mangakura.

### Supporting volunteers

The local board has officer support and resources available to support volunteers in our parks with environmental work such as weeding. The local board value the energy and enthusiasm of these groups and encourage more people to get involved like community groups working at Kowhai Park in Warkworth, on the Leigh coastal walkway and the active group in Hoteo.

### Sport and recreation plans

As outlined in earlier sections of this report, the following sport and recreation plans have been completed this term and several more are underway:

- Needs Assessment for Swimming Pool provision in north Rodney.
- North Boat Ramps Research.
- Atlas Site Concept Plan.
- Wellsford Greenways Plan.

### Community leases

This term the local board has granted over 30 community leases on parks and reserves in the Rodney area assisting community groups to have certainty about their future on our open spaces.



Repair Shed Volunteers David Harvey and John Esling, Helensville



Waimauku Clock

## Outcome: communities are empowered and plan for their own futures

Our communities, young and old, will have increased access to a wide range of recreation opportunities for health, well-being and enjoyment.

### Engaging with youth

With the Rodney Youth Advisory Panel up and running this term there was a focus on cementing that relationship and ensuring that the local board were aware of issues of concern to youth when making decisions. However, it has not been easy for the youth panel, who have worked hard against the challenge of a significant travel distance to get together, so limited joint local board advisory group meetings occurred. The local board are now considering alternative ways of ensuring that they are aware of the views and preferences of youth throughout the next local board term.

### Hui with iwi

The local board have continued to meet with local iwi on matters of relevance to both parties and look forward to more regular liaison on projects of interest with Nga Maunga Whaaki he, Ngati Manuhiri, Te Uri o Hau consistent with the Memorandum of

Understanding between iwi and the former Rodney District Council. The local board understands that the governing body is confirming a Memorandum of Understanding with local iwi. The time iwi have given to attend dawn blessings and other civic events in Rodney is greatly appreciated and they provide a cultural context to council and community events.

### Empowering communities

**Focus on helping communities to help themselves:** This focus has continued to be enshrined into a way of working for the Rodney Local Board. Partnerships on projects with community groups demonstrate this such as the Warkworth Town Hall, Kumeu Arts Centre, Warkworth Multisport, playgrounds, Old Wellsford Library project, volunteers in parks, community-led environmental projects, volunteer libraries, hall and reserve advisory groups and the North West BID. Opportunities in this area are endless and we encourage more community groups to drive the projects that they want to see happening in their communities.

Projects like the Helensville Repair Shed at the Helensville Community Recycling Centre, where under the guidance of a skilled volunteer, people will learn how to repair bicycles, farm machinery and furniture, putting the items back into use, or the teaching kitchen in Te Whare Oranga o Parakai both part funded by the local board are great examples.

**Community action toolkit:** The toolkit outlined earlier in this report assists communities to come together to undertake a project or create a vision for their areas and provide guidance to the approach and processes. The local board is pleased to see communities using this document and has enjoyed offering a small amount of support to communities like Leigh who have embraced the opportunity to work on community initiatives. Workshops in Riverhead, Parakai and Leigh resourced by the local board have assisted in being a catalyst to action. This drew from the experiences of Kaukapakapa and Coatesville communities during the preparation of their community plans which were funded by the local board in the previous term.

**Gateway enhancement projects:** Support for existing gateway projects like the Waimauku Lions clock has continued this year and council have assisted where possible behind the scenes with Kaukapakapa signage. Future projects will be able to seek support from the local community grant funding.

### Centre and structure plans

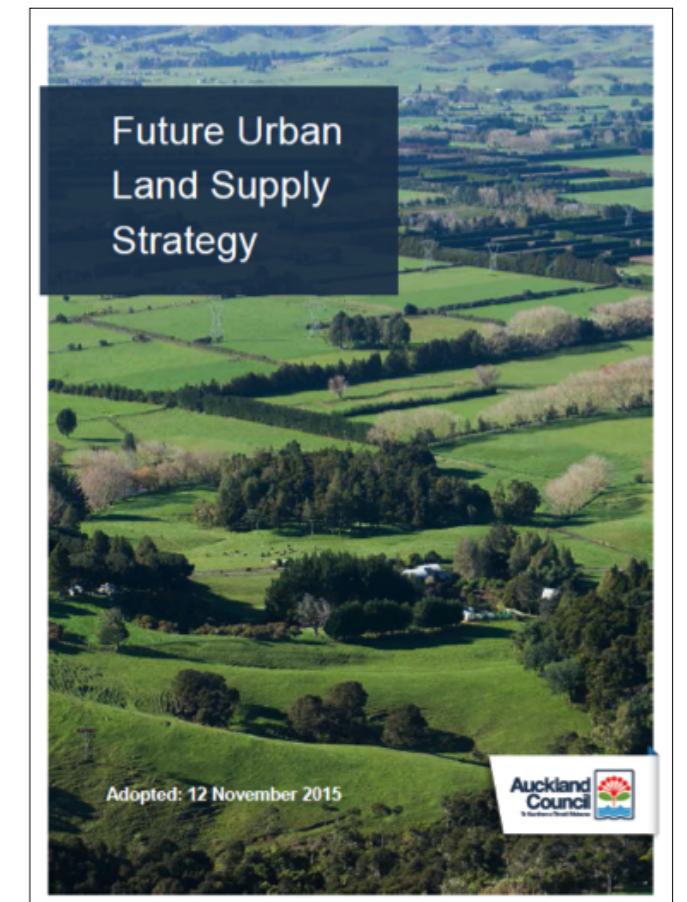
**Kumeu Huapai pre-work:** The local board plan confirmed that the local board would “Undertake consultation in Kumeu/Huapai to understand community values and perceptions prior to developing a comprehensive plan”. Survey work is complete and the local board is now working on a community-led centre plan.

**Kumeu - Huapai and Warkworth structure plans:** The Future Urban Land Supply Strategy was consulted on this term and adopted by the Auckland Development Committee of the governing body. This regional document provides a clear structure as to when future urban land will be zoned for development and therefore when the structure plans will be completed for Kumeu - Huapai and Warkworth. Of course Special Housing Areas in the north west are happening now 2012 – 2016. All other areas with the exclusion of Warkworth south are planned for development in 2022 – 2026 so it is expected that structure plans will commence in 2018. Warkworth south development is 2027 – 2031 and Silverdale-

Dairy Flat and Wainui are planned for development in 2032 – 2036. The preparation of this document was a significant step forward in providing certainty to communities and ensuring that funds are allocated to infrastructure in the planning phase rather than allowing development to lead and then infrastructure to catch up. The local board played a significant role in engaging with the community on this document and compiling its feedback for consideration.

### Mainstreet upgrades

Mainstreet upgrades continue to be an important matter for business and residents in Rodney’s main centres. Finding support for smaller projects has been challenging given the significant council resources required for the unitary plan. However, the local board have prepared a draft report which takes ideas from legacy plans and suggests upgrades. In the meantime, communities like Warkworth have prepared their own ideas, which are welcomed. The local board intend to consult in the coming months on ideas for upgrades, some of which will be council-led and others community-led.



Future Urban Land Supply Strategy



Yvonne Hilton and Dennis Cummings from Helensville Lions Club with Brenda Steele at the Helensville Riverside Walkway

## Outcome: our environment is healthy, cared for and enjoyed

Local community groups take ownership of the quality of their environment. River and stream water quality will be improving, pest species reduced and waste minimised. Our wastewater servicing will be reliable and environmentally friendly.

Environmental focus in the local board plan was on three areas; supporting communities to undertake environmental restoration and sustainability projects, supporting sustainable living initiatives in the community and implementing ecological survey work. Here are some examples of what has been undertaken this term:

### Community-led environmental projects

The local board plan states “Communities are valued as key to the success of environmental and sustainability initiatives.” With this in mind, the community-led environmental budget supports community initiated and led environmental programmes. All possible programmes are assessed against the following selection including community involvement, environmental benefit, youth skills, community awareness, geographical fairness etc. Some of the achievements in this area have included

the following projects many of which were funded over multiple years:

- **Takatu Landcare:** Controlling climbing asparagus.
- **North West Wildlink:** Bird survey by an ecologist at Muriwai, Riverhead and Pine Valley.
- **Sandspit Residents and Ratepayers:** Draft a community-led Sandspit Strategic Plan supported by an independent person.
- **Tapora Coast and Land Care:** Report to bring all existing bird data relating to the Okahukura Peninsula together to provide monitoring guidance and produce a booklet highlighting the unique biodiversity of the peninsula.
- **Mahurangi Farm Forest Trail:** Signage, plants and track design and construction
- **Kaipara Flats School:** Purchase of plants for enhancement of the Kaipara Flats rail corridor.

- **Leigh Harbour Valley Society:** Weed control programme.
- **Helensville Lions:** Helensville Creek Lane walkway project.
- **Muriwai Environmental Action Group:** Village green redevelopment.
- **Combined Warkworth groups:** Warkworth War on Weeds; an education programme including publication of a brochure on pest plants, regular weed working bees, a tool library and regular weed amnesty days.
- **Supported by North West BID, Haranui Marae and Reweti Marae:** Industrial pollution prevention project.
- **Supported by Mahurangi Action Incorporated:** Improving sediment and erosion control programme.
- **Enviroschools:** Signage.

### Sustainable living initiatives

After the success of the community environmental-led programmes budget in the last term, the local board was keen to expand its focus to support sustainable living initiatives in the community and support projects to improve septic tank systems and community education on best practice. This new stream of work has supported the following projects:

**Working towards a better tomorrow:** This project leveraged off existing regional programmes delivered by Auckland Council to target parents, encouraging the use of cloth nappies and other waste-free parenting strategies and products.

**Whangateau and Ti Point onsite wastewater education:** This project, which also attracted regional funding, involved door knocking and targeted education of residents regarding how to best manage their septic tanks to prevent water pollution.

### Implementing ecological survey work

The local board established the Ecological Survey of Terrestrial and Aquatic Ecosystems budget in response to a need for more up-to-date, comprehensive ecological data on the biodiversity values within the Rodney local parks network as minimal information existed to effectively prioritise ecological restoration works in local parks.

It was anticipated that it would take up to five years to gather the information; however the budget allocated

by the local board was supplemented through council’s regional biodiversity budget and the entire survey and parks prioritisation project was completed to deliver the Rodney Ecological Prioritisation Report in one year.

The Rodney Ecological Prioritisation Report identified management requirements to protect the biodiversity values on local parks including those with the highest ecological values. Focus is now implementing the biodiversity management recommendations from the report on the highest ranking local parks.

The survey across 168 Rodney parks identified three previously unidentified native plant populations, including one with a nationally critical threat ranking. A large number of different threatened native species were found including native long-tailed bats at three reserves, giant kokopu (a freshwater fish) in Warkworth, banded rail, pied shag, koura (crayfish) and rhytid (snails) in Pohuehue and critically threatened fish in Kaipara Flats and forest gecko in Sandspit. As a result further work has been undertaken at a number of reserves including:

- Lake Tomarata Dune Lakes Reserve
- Brick Bay – Puriri Place Reserve
- Birds Beach Recreation Reserve
- McElroys Scenic Reserve
- Woodcocks-Kawaka Reserve
- Omeru Reserve.

### Other Projects

The community-led project to dredge the Mahurangi River for navigational purposes was also supported through grant funding.

Volunteers at the Cement Works Walkway





Rodney Local Board members and Auckland Council staff with Peter Jackson at Whangateau Hall



## Outcome: local halls and libraries are familiar, valued and well used community spaces

Our halls and libraries meet the needs of local communities. They are highly valued, welcoming friendly spaces in which local residents take pride and have a sense of ownership.

### Warkworth Town Hall

The Warkworth Town Hall redevelopment and restoration is well underway. This partnership with the Warkworth Town Hall Restoration Trust and the fundraising group is a great example of council community collaboration. This term the local board confirmed additional funding alongside the trust to complete the new extension to the building.

### Helensville War Memorial Hall

The Helensville Foodbank, budgeting service and Helensville Arts Centre are part of the new community hub that has opened in the retrofitted basement of the Helensville War Memorial Hall. The local board relocated these groups into new premises in the hall.

The building had been under utilised for some time, with the basement used for storage and the mezzanine having limited access.

### Community hall upgrades

The local board plan was pretty clear about work to be done to our halls as it states "But as we shiver in winter in halls without heating and squeeze into buildings too small for the rising population, we know they need more than 'a lick of paint'." With increase in the capacity of Warkworth and Helensville halls, the local board asked for a stocktake of heating and lighting needs in our halls and advice on what else needed fixing. As a result here are some of the works completed:

- Kitchen replacements and upgrades: Glasgow Park, Kourawhero, Tapora, Waimauku and Te Hana and Wainui halls.



Brenda Steele and Warkworth Town Hall Restoration Trust member Tracey Martin, MP



Helensville Basement renovation blessing

- Remedial works: Helensville Community Centre (Plunket) and Wellsford Community Centre.
- Heating/insulation upgrades: Leigh, Tauhoa, Whangaripo, Whangateau and Point Wells, Wainui and South Head halls heating.
- Drainage: Point Wells and Wainui halls.
- Toilet upgrades: Waimauku Hall.
- Lighting upgrades: Whangaripo Hall.
- Carpark upgrades: South Head Hall .

### Rural Halls project

Many of our halls and reserves are supported by advisory groups. Unfortunately the role of these groups hasn't been well supported by the new Auckland Council structure. The local board is now reviewing the way council-owned halls are managed and consulting with the community on how this situation can be improved. The local board would like to see greater support for these groups and the option for more involvement in the management of their halls.

### Fees and charges subsidy

Most local boards adopted a fee increase for hall hireage early this electoral term for community facilities. The local board continued to subsidise fees whilst the rural halls management project got underway. The local board have now approved new fees and charges for council managed halls.

### Old (former) Wellsford Library

Advocacy to the governing body to retain the old Wellsford Library for community uses was successful. The local board are continuing to work with the community to re-open the old building for community uses under an economically sustainable model and have provided interim short term funding for its building maintenance.

### Libraries

Our five Rodney libraries at Helensville, Kumeu, Mahurangi East, Warkworth and Wellsford are running well. The local board also continues to provide grants to volunteer libraries at Taporā, Leigh and Point Wells.

Works to our libraries this term have included:

- **Helensville:** CCTV and lighting replacements
- **Warkworth:** Reconfigure library and fix internal gutters, interior refresh
- **Kumeu:** Investigations into potential remedial roof work
- **All Libraries:** Furniture and fixture upgrades.

A key initiative this term was enhancing the services and resources for English Speakers of Other Languages such as Ikiribati and Tuvaluan, by sharing resources and growing collaboration with external partners.

Various programmes are run encouraging people to use libraries as community hubs.

## Outcome: local economies are strong and growing

Our local economy will strengthen and businesses will thrive through working together. A growing economy will provide more jobs for local people.

### Establishing Business Improvement Districts

The local board's focus this term was to support business associations wanting to explore the possibility of becoming a business improvement district (BID). A small amount of funding was provided each year to cover the expenses of the process.

This term the local board were pleased to see business associations from Riverhead to Kaukapakapa join together to form the North West District Business Improvement District. This approach is an evolution of the BID model and took nearly two years to develop.

Warkworth Area Business Association more recently explored the possibility of becoming a BID, however, the ballot was unsuccessful.

### Economic development actions

Over the term the following economic development actions were undertaken:

**Tourism video:** In the previous term a Rodney promotional video was produced for distribution to the secondary schools in Rodney as a contribution to developing international student programmes. The local board assisted and funded the final part of the video's preparation and distribution.

**i-SITE management:** Granted approval to Matakana Coast Tourism to occupy i-SITE premises in Warkworth to deliver visitor information and services.

**Business research:** Business research was undertaken with Snells Beach and Wellsford business communities.

**Visitor attraction promotion:** Grant for the North West Business Improvement District visitor attraction promotion proposal to support tourism.

**Teaching kitchen:** Grant to support the establishment of the Te Whare Oranga ō Parakai teaching kitchen.

**Town centre plans:** Assessment of legacy town centre plans for possible projects that have an economic development impact.

**Security cameras:** Grant for the establishment of security cameras along Mahurangi Riverbank under the Warkworth Area Business Association.

**Visitor signage:** Grant to erect visitor information signage at locations in accordance with the North West Business Association visitor programme.

### Ngati Whatua o Kaipara Housing Project

The local board provided funding support to Ngati Whatua Nga Rima o Kaipara for a project that aimed to improve housing options for local whanau. The project was intended to deliver high-quality, healthy housing through various initiatives including retrofitting existing houses in the area and relocating refurbished houses to local sites and will provide related employment and training opportunities.

North West Business Association President Bruce Cowan with Brenda Steele and Phelan Pirrie in Helensville.





Friends of Kauri Crescent Track, Kumeu

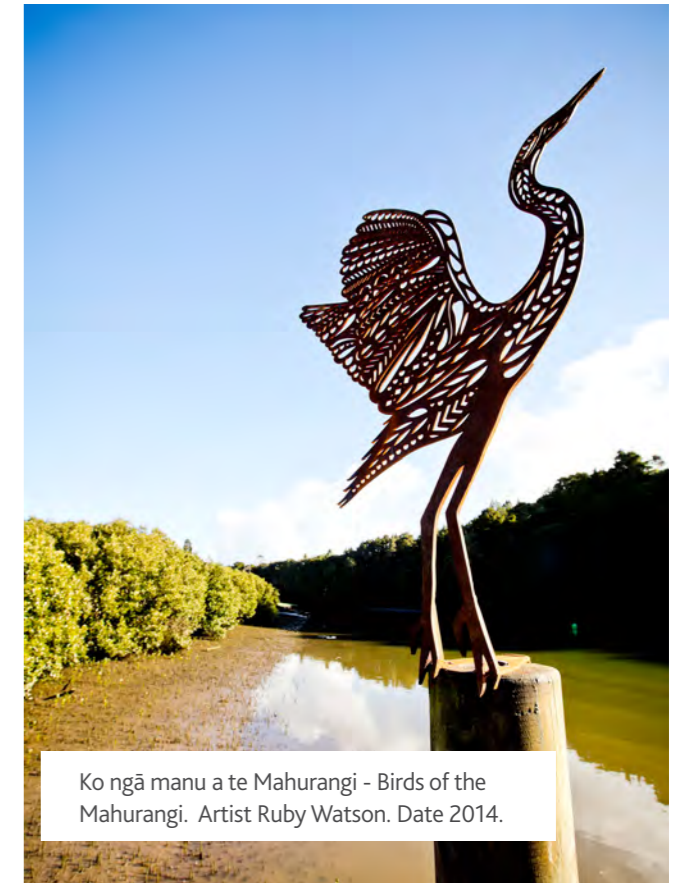
### Arts

The Helensville Arts Centre moved into the newly refurbished Helensville War Memorial Hall and was granted a lease for the premises. The Kumeu Arts Centre received grant funding for building works including removal of roller doors, roofing, ceiling lining and lighting. A feasibility study for a building extension is underway.

Operational grants were provided to both Kumeu and Helensville centres and a small amount to Kowhai Arts Centre.

#### Auckland Regional Services Trust (ARST) funding:

The local board were pleased to utilise legacy funding available only for arts projects in Rodney and continue with those completed in the first electoral term. Projects completed included sculptural markers along the Matakana to Point Wells walkway and Warkworth's clock tower mosaic work, Ko nga manu a te Mahurangi (Birds of the Mahurangi) artwork on the Warkworth riverbank.



Ko ngā manu a te Mahurangi - Birds of the Mahurangi. Artist Ruby Watson. Date 2014.

## Outcome: arts, culture and events enhance our communities and express who we are

Our communities will celebrate, learn and grow through arts, culture, events and a variety of community-led initiatives. These activities will strengthen communities, provide opportunities for people to connect with each other and build a sense of pride.

### Community grants

The local board continues to provide a contestable community grants fund to assist communities with projects. Mid-term the local board adopted the community grants policy which provides guidance to elected members and the community on the sorts of projects that will be funded. The policy focuses on the delivery of local board plan initiatives. A full list of grant recipients is attached as Appendix 2. A few of those funded include the Helensville Railway Museum, Riverhead residents for their walkway project, Leigh Harbour Valley Society and Muriwai Environmental Action Community Trust for traps, Friends of Kauri Crescent Track in Kumeu and Muriwai Community Association for walking tracks.

### Events

Other than ANZAC and civic event funding the local board does not deliver events. Rodney communities requested that the focus be on supporting communities to run events through grants. Some of the events funded this term include Parakai Christmas Festival, Warkworth A&P Show, Big Nui Music Festival, Mahurangi Regatta, Kowhai Festival and the Wellsford Country Show. For a full list of recipients is attached in Appendix 2.



Local Board Plan Expo Kumeu

## Thanks

The local board decided through the local board plan that in order to deliver, in the words of the Rodney Local Board Chairperson, “best bang for your buck” the local board needed to focus. So focus is on what communities told them was the priority. This meant that some projects were cut from the plan. It also meant that the local board needed to support and work collaboratively with those local communities who are progressing initiatives themselves. This focus and collaboration is evident in this achievement report.

A few larger projects such as the Helensville War Memorial Hall and Warkworth Town Hall were progressed, others are planned for future terms such as the Warkworth swimming pool and Kumeu Arts Centre extension. There was a focus on fixing up our existing assets like toilets and halls. Most importantly a huge number of projects driven by individual communities continue to be supported by the local board.

The local board would like to thank all those that have worked alongside them in our communities and in council to make Rodney an even better place to live.

## Appendix 1

Deputations and public forums from December 2013 to April 2016

	Organisation/Person	Purpose
1	Peter Davis	Jamieson Bay parking
2	Alex Fowler	Sandspit infrastructure concerns
3	Roger Williams	Hill Street intersection
4	Kumeu Huapai Ratepayers Assn.	Special Housing Areas issues
5	Kirsty Christison	Business linked internship scheme
6	Neville Johnson	Matakana walkway cycleway
7	Gavin Alexander	Coatesville presentation re Unitary Plan
8	OnBoard Skate Inc	The activities of OnBoard Skate
9	Colin Plowman	Opahi Bay matters
10	Mahurangi Action	Mahurangi River Basin, Landings and Navigation Plan
11	Snells Beach Neighbourhood Watch	Update on Neighbourhood Watch
12	Shane Hartley	Matakana Loop Road
13	Bryan Jackson	Hill Street intersection
14	Warkworth Liaison Group	Hill Street intersection
15	Brian Mason	Wellsford concerns including unsealed roads
16	Omaha Beach Community Inc	Omaha Beach issues
17	Waitemata District Health Board	Update on activities
18	Paula and Stephen Pepperell	Proposals for Riverhead Tavern
19	Cancer Society	Request to make Smokefree a local board priority
20	Whangateau HarbourCare	10 Point protection plan for Whangateau Harbour
21	Tony Mair	Pukapuka road sealing proposal
22	Jill Parsons	Dog access rules
23	Terry Brailsford	Omaha – dog issues
24	Coatesville Residents and Ratepayers	Update on Coatesville matters
25	Kumeu Arts Centre	Update from Kumeu Arts Centre
26	SOSSI	Update on Save Our Sandspit Society Inc.
27	Wainui School	Issues - resource consent for a fundraising event
28	Sport North Harbour	Update on Sport North Harbour activities
29	NWDBA BID	Update on the North West BID
30	Geraldine Bailey	Kaukapakapa matters
31	Raeburn House	Update on activities of Raeburn House
32	Riverhead Residents and Ratepayers	Riverhead issues
33	Peta Hardley	Kauri Crescent road matters
34	Matakana Coast and Country	Warkworth i-site and Matakana matters
35	Warkworth Wellsford Hospice	Update on Warkworth Wellsford Hospice building proposal
36	North West Business Improvement District	Update on the North West BID
37	Martin Dancy	Matakana Link Road
38	David O’Sullivan	Matakana improvements – reserve, tennis court etc
39	Puhoi Road Safety Group	Issues of road safety at Puhoi
40	Puhoi Sports Club	Issues around the hard court at Puhoi
41	Kumeu Huapai Groups	Matters relating to Kumeu Huapai
42	Matakana Pony Club	Pony Club lease at Diamond Jubilee Park, Matakana
43	North West Business Improvement District	Update on North West BID
44	Muriwai Environmental Action Group	Update from Muriwai Environmental Action Group
45	Warkworth Museum	Proposal to have overnight camper van parking
46	Holly Ryan	Various matters
47	Matthew Paterson	Proposal to have visitor information centre at Muriwai by local iwi
48	Holly Ryan	Various matters
49	Snells Beach Residents & Ratepayers Assn	Various matters relating to Snells Beach
50	Mahurangi Presbyterian Church	Update on activities of Mahurangi Presbyterian Church
51	Ngati Manuhiri	Update on container art exhibition funded by the local board
52	Springboard Community Works	Update on Community Work activities
53	Helensville Arts Centre	Update on Helensville Art Centre
54	Holly Ryan	Various matters
55	Simon Withers	Proposal for retail building in Warkworth next to the town hall
56	Danielle Hancock	Proposal for a Playground at Kaukapakapa Memorial Reserve

## Appendix 2

Community grants (including sub-committee and events funding) December 2013 - April 2016:

57	Save Our Sandspit Society Inc (SOSSI Michael Taplin)	Sandspit ecological management plan
58	Chris Martin	Set netting at Omaha
59	Neil Hansen	Set netting at Omaha
60	Matakana Coast Tourism	Update from Matakana Coast Tourism
61	Iain Macdonald	Big Omaha Trail
62	Kowhai Art and Craft	Update on Kowhai Art and Craft activities
63	Matakana Community Group & Coast Trail Trust	Request for pedestrian/cycleway bridge across Matakana River
64	Harbour Sport	Update on Harbour Sport activities
65	Kawau Island Advisory Committee	Various matters relating to Kawau Island
66	Mahurangi Action	Mahurangi Trail and footbridge to Te Muri from Wenderholm
67	Thomas de Thierry	Various issues relating to Te Hana
68	Holly Ryan	Various matters
69	Vector	Update on Vector activities in Rodney
70	Roger Williams	Upgrade of walking track in Kowhai Park
71	Auckland Woodhill Endurance Club	Locations sought for endurance riding venue
72	Piers Barney	Kawau Island baches and their upkeep
73	Matakana Coast Tourism	Future of the Warkworth i-site
74	Matakana Coast Trail	Walking and cycling bridge at Matakana
75	Kumeu-Huapai Residents and Ratepayers	Update on Kumeu Huapai issues
76	Holly Ryan	Various matters
77	North West Business Improvement District	Update on North West BID
78	Te Whare Oranga o Parakai	Update on activities at Te Whare Oranga o Parakai
79	Public Transport Users Association	Matters relating to public transport in Kumeu, particularly rail
80	West Auckland Enterprise, Skills and Training (WEST)	Update on the activities of WEST
81	Riverhead development proposal	Proposal to upgrade Riverhead Tavern
82	North Rodney Arts	Proposal to use Atlas site by North Rodney Arts
83	June Turner	Te Whau and Snells Beach to Warkworth walkway
84	June Turner and Chas Benest	Sunburst Ave carpark issues
85	Kumeu Cricket	Update on Kumeu Cricket activities
86	Lions Club of Waimauku	Proposal for a playground in Waimauku
87	Holly Ryan	Various matters
88	Cimino Cole	Mahurangi Riverbank proposal
89	Anti-Rodeo Action	Warkworth Rodeo concerns
90	Warkworth Rodeo	Outline of activities of Warkworth Rodeo
91	Snells Beach Residents and Ratepayers	Sunburst Ave carpark issues
92	The Nakhle Group and Shane Hartley	Update on Special Housing Area proposal
93	Helensville Enterprise Trust	Update on the Repair Shed Helensville
94	Steve Coatham of Exeloo	Outline of Exeloo options for public toilets
95	Mahurangi Action	Te Muri Regional Park
96	North West Business Improvement District	Update from on the BID
97	Bunty Condon	Concern regarding Special Housing Areas in Huapai
98	Kumeu-Huapai Residents and Ratepayers	Update from the association
99	South Kaipara Food Revolution	Update on the South Kaipara Food Revolution
100	Harbour Sport	Six month update on Harbour Sport activities
101	Tracy Roe/Peter Young	Petition regarding removal of the lullaby swing.
102	Omaha Beach Bowling Club	Update on requirement for a retaining wall
103	Kumeu-Huapai Residents & Ratepayers Assn.	Various matters relating to Kumeu-Huapai
104	Omaha Beach Community	Footpath request Broadlands Drive to the golf club
105	Mahurangi River Restoration Trust	Mahurangi River Navigational Dredging Proposal
106	Kumeu Baptist Church	Proposal to build a new Church Facility
107	Allan and Mary McKenzie	Maintenance of Wilson Road, Wayby Valley
108	Walking Access Commission	Outline of activities and role of commission
109	Lions Club Waimauku	Proposal for new playground
110	North Rodney Blue Light	Update on NRBL activities

Grant Recipient	Project
Wellsford Promotions Association Incorporated	Wellsford Xmas Parade
MediaWorks Radio Rodney	Times FM Summer Movie Night
OnBoard Skate Inc	Skate for Change
HIPPY South Kaipara Charitable Trust	HIPPY South Kaipara Graduation Ceremony
Kumeu Community Centre (KCC) Netball	Kumeu Community Centre Netball
OPAK - Organisations Passionate About Kawau	Music in the Gardens
Mahurangi Gymnastics Club Inc.	Spooktacular
Getin2life Youth Development Trust	In2it Summer Series - (Rodney)
Point Wells Fete	Point Wells Fete
Lions Club of Helensville	Helensville Community Christmas Parade
Mahu Vision Community Trust	Mahurangi Pasifika 2014
Taupaki School Parent Teacher Association	Monster Firework Display 2014
Warkworth Area Business Association Incorporated	Warkworth Santa Parade 2014
Warkworth Agricultural & Pastoral Society	Warkworth Agricultural & Pastoral Society
Mahurangi Action Incorporated	Mahurangi Regatta
Kowhai Festival Society Incorporated	Kowhai Festival 2014
Wellsford Country Show (Wellsford A&P Society)	Wellsford Country Show
Hibiscus Rodders	hibiscus rodders beach festival 2015
Wainui School PTA	Big Nui Music Fiesta
Kaipara Memorial RSA (Inc)	Anzac Day 2015 Commemoration of 100 since Anzac landings
Helensville Community Christmas Luncheon Organise Group	Helensville Community Christmas Lunch 2014
Massey Athletic Club Inc	Club Physical Whenuapai Half Marathon
Helensville A&P Association	Helensville A&P Show 2015 - Saturday 28 February 2015
stage51 limited	OREWA CHRISTMAS ON THE BEACH
HIPPY South Kaipara Charitable Trust	HIPPY South Kaipara Ten Year Celebration
Muriwai Lifeguard Service Amenities Trust	Tunes in the Dunes (at Muriwai)
Wellsford Districts Sport & Recreation Collective Inc	Children's Fun Day
Nor-West Community Patrol Trust	Going into the community supporting the Police
Helensville Women & Family Centre	Wahine Toa & Wahine Rangatira Groups, Professional Training
North Rodney Blue Light Ventures Inc.	Portable Disc Golf Project
South Kaipara Community Patrol Trust	New Vehicle Setup
Matakana Coast Trail Trust	Route and Priorities for Warkworth-Snells Beach-Sandspit-Matakana
Age Concern Rodney Inc.	Age Concern Rodney Visiting Service
Kumeu Children's Art Club Incorporated	Painting through the ages and Mixed Media
Highfield Garden Reserve Advisory Committee	Orchard Picnic Table/Bench
Women's Centre Rodney	Compliance with resource consent for Women's Centre Rodney
Pakiri Tennis Club	Resurfacing the two courts at Pakiri Tennis Club
Nga Maunga Whakahii o Kaipara Development Trust	Visitor hosting / kaitiaki service at Muriwai Beach
Waimauku Playcentre	Shade Sail over our swings
Parent Aid Kaipara Incorporated	Operating costs of the service
Kumeu Arts Centre Inc	Create a Public Sculpture
Leigh & Districts Ex Services & Community Club	Upgrade of Leigh Reserve and Tennis Courts
Mahurangi Action Incorporated	Mahurangi River Restoration Wharf Shed Visualisation
Grandparents Raising Grandchildren Trust NZ	GRG Newsletter and Outreach Worker
Forest Bridge Trust	The Kaipara-Omaha Forest Bridge
Warkworth Brass Band Inc	PA System
Coast Youth Community Trust	Youth Camp 2015
North Rodney Blue Light Ventures Inc.	Youth Potential Development Fund
South Kaipara Youth (SKY) Charitable Trust Inc	Awesome Us
Orewa Sea Scout Group	Orewa Sea Scout Group Facility Upgrade
South Kaipara Men's Trust	Father & Son and Father & Daughter activities
Coast Youth Community Trust	Family Worker Wages and Expenses
Wellsford Promotions Association Incorporated	Wellsford Promotions Improvements
Age Concern Rodney Inc.	Elder Abuse and Neglect Prevention and Awareness Coordinators
Sir Peter Blake Marine Education and Recreation Centre	Student bathroom renovation for accessibility
Mahu Vision Community Trust	Pacifika Project

Hestia Rodney Womens Refuge	Community Based Advocacy
ParentPort North Inc	ParentPort North
Te Rito Rodney	Stand Up
Waimauku Lions	Waimauku Clock Sign
Helensville Women & Family Centre	Helensville Women & Family Centre Services
Health Link North Incorporated	Parents and Families Brochure
North Shore Hospice Trust -Warkworth Wellsford Committee	Warkworth Wellsford Hospice Building Project
Helensville and District Historical Society Inc	New Roof
OnBoard Skate Inc	'Skate Safe & Scoot Safe"
North Harbour Hockey Association	Renegade Hockey
Omaha Surf Life Saving Club Inc	Omaha Beach Junior Surf training
Parakai School	Bike Track
Wellsford Districts Sport & Recreation Collective Inc	Co-ordination of Community Events and Projects
Warkworth Golf Club Inc	Irrigation Stage One
Coast Youth Community Trust	Youth Worker Salaries and Expenses
Womens Centre Rodney Inc	Young Mothers Educational Programme
Te Awaroa Youth Club	Te Awaroa Youth Club
Mahu Vision Community Trust	GIRL Programme and AFTER SCHOOL Programme
South Kaipara Men's Trust	Kai Takawaenga
North Rodney Blue Light Ventures Inc.	Staff Salaries Training and travel
Rodney Aphasia Group, Inc.	2015 Learning Opportunities for Rodney Aphasia Group members
Kumeu Playcentre	Under 2's Outdoor Equipment Upgrade
Hibiscus Coast Senior Moments Charitable Trust	Christmas, Summer, Mid Winter and Spring Lunches
Peter Snell Youth Village	Replace Data projector and purchase a brush chipper
YMCA of Auckland Inc	Emergency Response Equipment
Hestia Rodney Women's Refuge	Te Roopu Kaha wahine support group
Point Wells Library	Funding for the purchase of new books
Warkworth and Districts Croquet Club Inc	Replacement of greens mower
Warkworth Scout Group	Warkworth Scout Group Centennial Commemorative Badges
Rodney Neighbourhood Support Incorporated	Safer Communities
Mahurangi West Emergency Response Group	Building Community Resilience Project (Phase II)
Warkworth Community Response Group	Warkworth Community Response Group Equipment Set Up Project
Riverhead Rates Payers Assn Inc	Alexander St walkway
Highfield Garden Reserve Advisory Committee	Concreting of existing diagonal track in Main Donkey Paddock
Warkworth Riverbank Enhancement Group	Warkworth Township To The Historic Cement Works Walkway
Puhi Community Forum	Puhi Riverside Walkway
Baddeleys & Campbells Beach Residents & Ratepayers Ass	Baddeleys Reserve Walking Track Development
Lions Club of Warkworth	Kowhai Park Track Upgrades
Warkworth Area Forest and Bird	Cement Works to Warkworth Walkway
Snells Beach Ratepayers and Residents	Snells Beach to Warkworth Walkway Feasibility
Omaha Beach Committee (OBC)	Omaha Taniko Wetlands Scientific reserve walking trail
Muriwai Community Association Inc	Muriwai Sandstone Walking Track
Huapai Reserve Advisory Committee	Perimeter Walking/Cycling Path around Huapai Reserve
Tomarata Public Hall Association	Payment of insurance cover
The Forest Bridge Trust	CatchIT Schools
Manaia Properties Ltd	Riparian Planting of the Mataia Stream
Warkworth Area Business Association	2015 Warkworth Santa Parade
Leigh Harbour Valley Society	Pest Control Programme
Snells Beach Ratepayers and Residents Association Inc.	Sunrise Boulevard Playground Development
Warkworth Community Response Group	Emergency Response Centre; provision of essential equipment
Muriwai Environmental Action Communities Trust	Muriwai Village Green Project
Kawau Boating club	Upgrade to ablution block
Rodney Neighbourhood Support Incorporated	Safer Communities
Mahurangi Action Incorporated	2016 Mahurangi Regatta
Mahu Vision Community Trust	Pacifika Community Transformation Plan Project
Kaipatiki Project Environment Centre	North-West Wildlink Assistance Programme - Rodney

RainbowYOUTH	Operational Costs
Mahurangi Junior Hockey Club	Mahurangi Junior Hockey Tournament
Sandspit Yacht Club Incorporated - Centreboard Division	Coaching Clinics Spring Season
Kumeu Arts Centre Inc	Much needed small capex items
Kaukapakapa Area Resident and Ratepayers Association	Kaukapakapa Privet Removal
Leigh Harbour Valley Society	Leigh Harbour Valley weed control
Muriwai Environmental Action Community Trust	More penguins at Muriwai
Puhi Historical Society Inc.	Map of historical sites for Puhi
Wellsford Country Show (Wellsford A& P Society)	Wellsford Country Show
Friends of Kauri Cres Track	Kauri Cres Track improvement Project
T&M Stazyk Partnership/CUE Haven	Restoration of property adjoining CUE Haven
Whangateau Hall and Reserve Advisory Committee	Seats/tables for bench area
Mahurangi Community Sport and Recreation Collective	Showgrounds Portacom
Warkworth and District Museum	Borer treatment in historical collection
Leigh Ex Services and Community Club Incorporated	Leigh Community Gateway
Helensville Women & Family Centre	Children's Day Out
Hoteo North School Society Inc	The Hoteo North Hall Sign Project
Whangateau Hall	Whangateau Hall - Hinge Boundary Fence
Kumeu Cricket Club	Kumeu cricket have a go at cricket
Ray Harrison	Kowhai Festival 2015
OPAK (Organisation Passionate About Kawau)	"Music in the Gardens" Kawau Island
Warkworth Agricultural & Pastoral Society	Warkworth Agricultural & Pastoral Society - 149th Annual Show
Stage 51 LTD	Orewa Christmas at the Beach
North West District Business Association	Helensville Lions Christmas Parade
Wellsford Promotions Association Incorporated	WELLSFORD XMAS PARADE
Kumeu Arts Centre	Towards Interactive School Art programme
Melinda Butt	Painting of telephone boxes in Kumeu, Waimauku and Muriwai
Puhi Community Forum	Facilitator for the Puhi Placemaking Project
Coatesville Hall and Reserve Advisory Committee	Wild Wood Community Project in the Coatesville Reserve between
Te Whare Oranga o Parakai	Towards South Kaipara Schools Cooking Club
Parakai Primary School	Towards bikes for the Parakai Bikes in Schools programme

