

Little Oneroa Reserve

DRAFT CONCEPT PLAN OPTIONS | APRIL 2017

OPTION 1 - Little Oneroa Reserve Concept Plan



OPTION 1 FEATURES

- 1 Parking bay to accommodate 12 parks with gravel surfacing (requires minor regrading). Road to allow pedestrian access to toilet block (dependant on AT approval)
- 2 Section of existing carpark retained and reconfigured to maximise parking spaces (23 spaces). Timber wheel stops to prevent vehicle access to park and paint arrows denote one way system. Resurface when up for renewal
- 3 Mill out asphalt around tree trunks, install timber border and groundcover planting to protect trees and formalise parking
- 4 Concrete path around carpark
- 5 Relocate pizza kiosk and recycling bins with bench seating
- 6 Swings

GENERAL NOTES

- 1 Tube slide down bank for primary to teenage children
- 2 Install stairs for access to slide in new location as a renewal. Install a low timber batten fence with gate with snap latch around slide and stairs entry to ensure children do not run onto the road. Allow for stepping logs connecting slide to stairs
- 3 Undertake weed control on banks and native re-planting
- 4 Existing path widened to 2.5 metres to allow cyclists and walkers to share. Lighting along shared path in future
- 5 2 sand ladders and ropes to encourage single point of access to beach (to protect dune vegetation)
- 6 Low coastal planting to discourage access to dune system
- 7 Additional planting east and west of the stream mouth and along the stream bank, to improve habitat and water quality
- 8 Paved area near toilets rationalised with shared path route prioritised
- 9 Sand play and climbing module in existing raised area with sand safety surface. Existing shade sails and swings retained and timber seating provided on edging
- 10 Concrete footpaths connecting car park and playground
- 11 Signage consolidated into a plinth sign that provides information about walking options in the area and way-finding to the toilet
- 12 New steps to access beach to tie in with retaining wall
- 13 BBQ moved to sunnier area near boat ramp
- 14 Section of existing carpark removed and reinstated to grass with shade trees and picnic tables
- 15 Proposed coastal tree planting
- 16 Maintain access to private boat shed with reinforced turf grid or gobi-block and connect to existing ramp
- 17 Concrete footpath to create formal boundary between road and car park with entry/exit points flush with road
- 18 Raised concrete table for pedestrian safety

OPTION 2 - Little Oneroa Reserve Concept Plan



OPTION 2 FEATURES

- 1 Existing gravel track retained for maintenance access
- 2 Section of existing carpark retained and reconfigured to maximise parking spaces (31 spaces). Timber wheel stops to prevent vehicle access to park and paint arrows denote one way system. Resurface when up for renewal
- 3 Mill out asphalt around tree trunks, install timber border and groundcover planting to protect trees and formalise parking
- 4 Connect path to ramped beach access and coastal walk
- 5 Relocate pizza kiosk and recycling bins under tree with bench seating away from parking
- 6 Swings

GENERAL NOTES

- 1 Tube slide down bank for primary to teenage children
- 2 Install stairs for access to slide in new location as a renewal. Install a low timber batten fence with gate with snap latch around slide and stairs entry to ensure children do not run onto the road. Allow for stepping logs connecting slide to stairs
- 3 Undertake weed control on banks and native re-planting
- 4 Existing path widened to 2.5 metres to allow cyclists and walkers to share. Lighting along shared path in future
- 5 2 sand ladders and ropes to encourage single point of access to beach (to protect dune vegetation)
- 6 Low coastal planting to discourage access to dune system
- 7 Additional planting east and west of the stream mouth and along the stream bank, to improve habitat and water quality
- 8 Paved area near toilets rationalised with shared path route prioritised
- 9 Sand play and climbing module in existing raised area with sand safety surface. Existing shade sails and swings retained and timber seating provided on edging
- 10 Concrete footpaths connecting car park and playground
- 11 Signage consolidated into a plinth sign that provides information about walking options in the area and way-finding to the toilet
- 12 New steps to access beach to tie in with retaining wall
- 13 BBQ moved to sunnier area near boat ramp
- 14 Section of existing carpark removed and reinstated to grass with shade trees and picnic tables
- 15 Proposed coastal tree planting
- 16 Maintain access to private boat shed with reinforced turf grid or gobi-block and connect to existing ramp
- 17 Concrete footpath to create formal boundary between road and car park with entry/exit points flush with road
- 18 Raised concrete table for pedestrian safety

OPTION 3 - Little Oneroa Reserve Concept Plan



OPTION 3 FEATURES

- 1 Existing gravel track retained for maintenance access
- 2 Section of existing carpark retained and reconfigured to maximise parking spaces (29 spaces). Timber wheel stops to prevent vehicle access to park. Resurface when up for renewal
- 3 Mill out asphalt around tree trunks, install timber border and groundcover planting to protect trees and formalise parking
- 4 Connect path to stair beach access
- 5 Relocate pizza kiosk and recycling bins under tree with bench seating away from parking
- 6 Swings

GENERAL NOTES

- 1 Tube slide down bank for primary to teenage children
- 2 Install stairs for access to slide in new location as a renewal. Install a low timber batten fence with gate with snap latch around slide and stairs entry to ensure children do not run onto the road. Allow for stepping logs connecting slide to stairs
- 3 Undertake weed control on banks and native re-planting
- 4 Existing path widened to 2.5 metres to allow cyclists and walkers to share. Lighting along shared path in future
- 5 2 sand ladders and ropes to encourage single point of access to beach (to protect dune vegetation)
- 6 Low coastal planting to discourage access to dune system
- 7 Additional planting east and west of the stream mouth and along the stream bank, to improve habitat and water quality
- 8 Paved area near toilets rationalised with shared path route prioritised
- 9 Concrete footpaths connecting car park and playground
- 10 Sand play and climbing module in existing raised area with sand safety surface. Existing shade sails and swings retained and timber seating provided on edging
- 11 Signage consolidated into a plinth sign that provides information about walking options in the area and way-finding to the toilet
- 12 New steps to access beach to tie in with retaining wall
- 13 BBQ moved to sunnier area near boat ramp
- 14 Section of existing carpark removed and reinstated to grass with shade trees and picnic tables
- 15 Proposed coastal tree planting
- 16 Maintain access to private boat shed with reinforced turf grid or gobi-block and connect to existing ramp
- 17 Concrete footpath to create formal boundary between road and car park with entry/exit points flush with road
- 18 Raised concrete table for pedestrian safety

PARKING STUDY

EXISTING LAYOUT



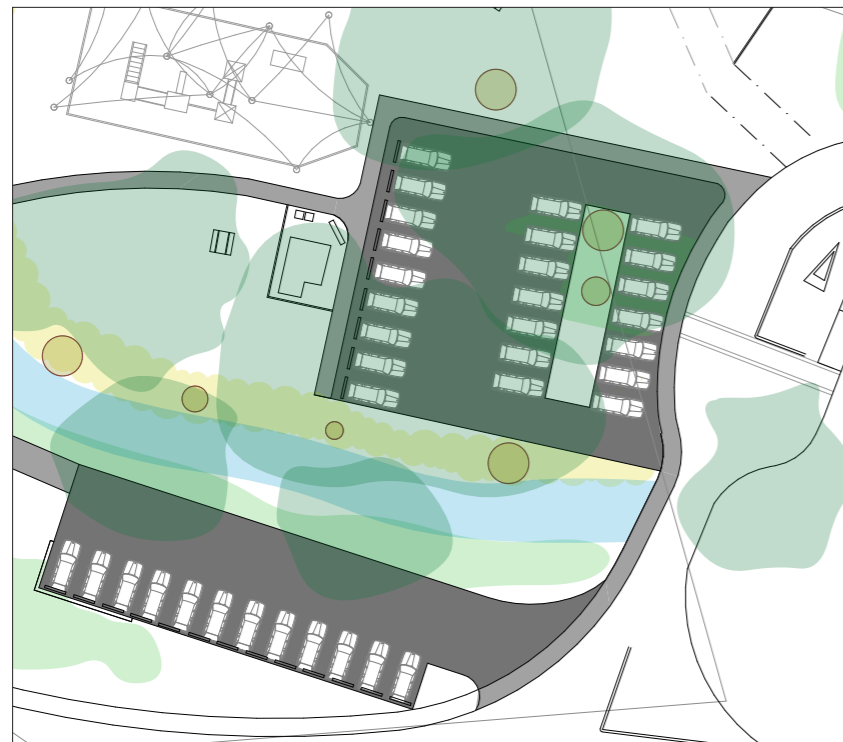
32 parks, 1,105m², 25m street frontage

ORIGINAL CONCEPT PLAN



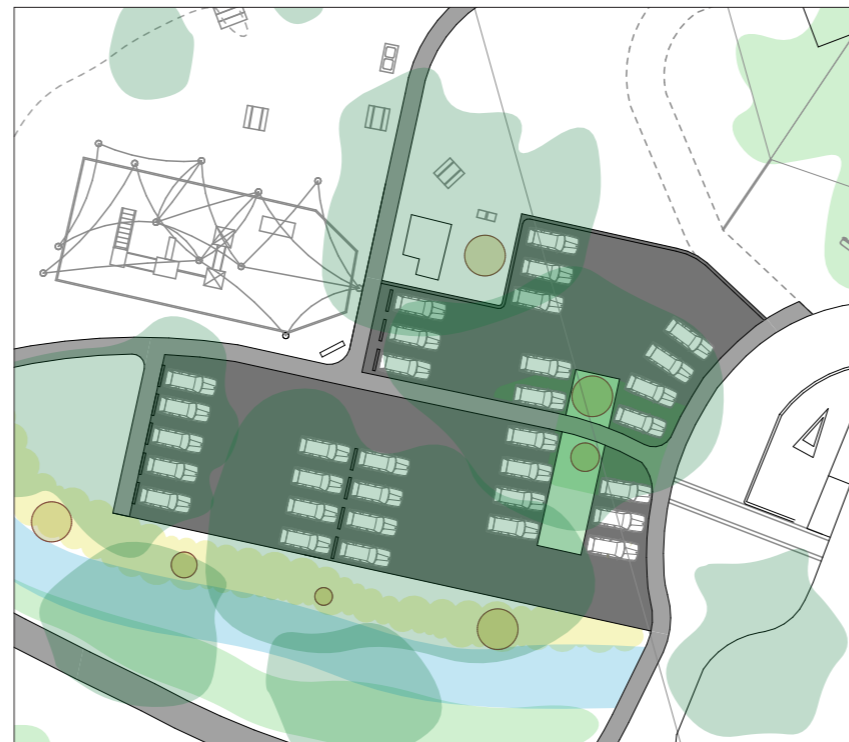
36 parks, 1,195m², 31m street frontage

OPTION 1



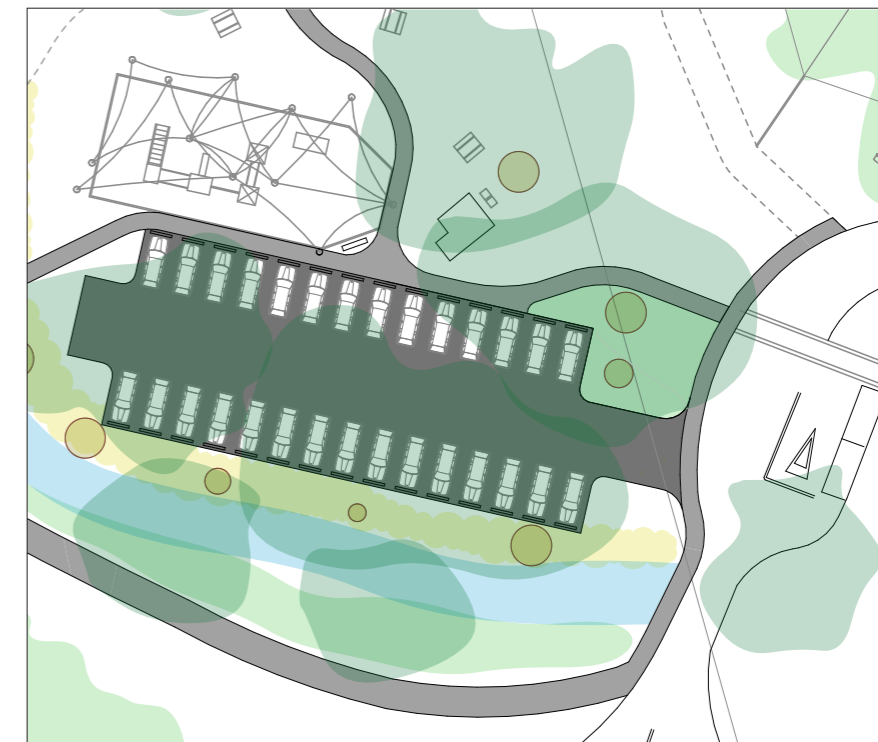
New parking bay - 35 parks, 1,110m², 39m street frontage

OPTION 2



Extended parking - 32 parks, 1,005m², 31m street frontage

OPTION 3



Reconfigured extended parking - 29 parks, 800m², 9m street frontage