

Waiheke Local Board Workshop Agenda

Date of Workshop: Wednesday 7 February 2024
Time: 10:30am
Location: Waiheke Local Board, 10 Belgium Street; MS Teams

WORKSHOP CANCELLED DUE TO LACK OF QUORUM

All items rescheduled to a later date

Time	Workshop Item	Governance role	Purpose	Presenter(s)	Proposed Outcome(s)
11:30	Item 1 Waiheke Island Tourism Inc (WITI) - Mātiatia business map	Keeping informed	Informal dissemination	Christina Hyde <i>WITI Chair</i>	WITI to give an update to members for funding received to implement an interactive map in Mātiatia Wharf building.
12:00	Item 2 Youth Needs Assessment (YNA) contractor update Attachments* YNA proposal	Keeping informed	Informal dissemination	Jules Radford-Poupard <i>Lead Researcher YNA</i> <i>Co-Director Point Research</i> Fiona Gregory <i>Community Broker</i>	Members to have an introduction to the YNA and lead researcher.

*Part of this workshop is required to be confidential

Reason: The public conduct of the part of the workshop would be likely to result in the disclosure of information for which good reason for withholding exists under section 7.

Particular interest(s) protected:

- LGOIMA s7(2)(b)(ii) - The withholding of the information is necessary to protect information where the making available of the information would be likely unreasonably to prejudice the commercial position of the person who supplied or who is the subject of the information.

Lunch Break

Time	Workshop Item		Governance role	Purpose	Presenter(s)	Proposed Outcome(s)
13:00	Item 3	Kai Waiheke update Attachments Kai Waiheke Food Charter	Keeping informed	Informal dissemination	Emily King <i>Kai Waiheke</i> Fiona Gregory <i>Community Broker</i>	Kai Waiheke to update members on progress and funding performance.
13:30	Item 4	CF & Parks update Attachment Waiheke Local Board monthly updates – November & December	Keeping informed	Informal dissemination	Shane Hogg <i>Manager Area Operations</i> Sue Gluskie <i>Facilities Coordinator</i> Bridget Velvin <i>Facilities Manager</i> Jacqui Thompson-Fell <i>Parks & Places Specialist</i>	Members are updated on CF projects and activities in the months of November and December, and progress of various programmes.

Governance Role

1. Accountability to the public
2. Engagement
3. Input to regional decision-making
4. Keeping informed
5. Local initiative / preparing for specific decisions
6. Oversight and monitoring
7. Setting direction / priorities / budget

Role of Workshop:

- (a) Workshops do not have decision-making authority.
- (b) Workshops are used to canvass issues, prepare local board members for upcoming decisions and to enable discussion between elected members and staff.
- (c) Workshops are not open to the public as decisions will be made at a formal, public local board business meeting.
- (d) Members are respectfully reminded of their Code of Conduct obligations with respect to conflicts of interest and confidentiality.
- (e) Workshops for groups of local boards can be held giving local boards the chance to work together on common interests or topics

WAIHEKE FOOD CHARTER

OUR VISION FOR A SUSTAINABLE LOCAL FOOD SYSTEM:

Waiheke Island's food system is **thriving and alive**.

Our food system is supported by **good governance** and **collective action** across food initiatives on the island.

We grow **abundant, healthy, food** on our land that feeds **all of our community members**.

No one is hungry and everyone has access to **affordable, nutritious food**.

Our oceans are **abundant** with **marine** life, our waterways are **healthy**, and our surplus **rainwater** is stored and saved.

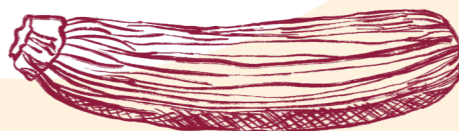
Our **soils** are **healthy** and **regenerating**.

We have **no food "waste"**.

We make **nutrient-dense** living **compost** that supports **food production**.

HUA PARAKORE

- The Hua Parakore framework refers to the six kaupapa of Hua Parakore, which are interrelated in their intention and how they are expressed in food systems: whaka-papa, wairua, mana, māramatanga, te ao tūroa, and mauri. Hua Parakore is a holistic approach that supports Te Ao Māori (Māori worldview) for food systems change. We recognise that it is not the only kaupapa Māori framework for food and support other frameworks as well.



FOOD ECONOMY

- We have a thriving food economy that employs people to do good jobs across the food system and initiatives.
- It is financially viable to run a food initiative on the island for farmers, growers, restaurants and stores. We are proud of our food workers earning a living this way.
- We are a connected network of home gardens, community gardens and market gardens that produces food at the scale and level given the land availability and people power. There is something for everyone.
- Our network of connected food initiatives grows and is interconnected, strengthening our food provenance and story.
- We have a thriving farmers' market and financially sustainable market gardens that people can buy locally grown food from.
 - Food is affordable for people.



FOOD SKILLS AND RESILIENCE

- We are a highly skilled island population with the know-how and the wisdom to have a thriving food system, from growing to making, cooking and eating food.
- Initiatives are supported to help educate people, particularly youth and new residents to the island, in how to garden the land on Waiheke.
- Cooking skills and programmes are offered to help people learn to cook and also to cook what's grown on Waiheke.
- We are connected and prepared in times of emergency, supporting and caring for those who are vulnerable and in need of food.



HEALTHY FOOD

- Food education and literacy is improved on the island to better understand healthy food.
- Our food produced on the island is healthy and nutrient dense.
- Healthy food is connected to healthy soils and also healthy minds.
 - Healthy food is affordable and an easy option for people.



ENVIRONMENT

- Our environment on land is interconnected with our ocean environment.
- The community goals for the environment on the island, such as increasing biodiversity on land, and abundance in the ocean, are also interwoven into our food system goals.
- We strive to regenerate the life supporting capacity of our island. This includes preservation of our aquifers and enhancing life in the water on land and in the sea.
- We are connected to nature and act accordingly through our actions in our food system. For example, we eliminate food waste and instead create compost as a resource on-island to enhance our soil and biodiversity.
- Water scarcity and droughts are a challenge to our food system. We are capturing and storing water in times of surplus in order to water crops and have food in times of drought.
 - Reforestation is recognised as key to maintenance of the local and broader water cycles.
 - We grow climate appropriate crops for Waiheke, crops that do well in times of drought and during heavy rainfall.

- Our agriculture, viticulture and horticulture practices align with regenerative principles and strive to be pesticide free.
- Our soil is a resource that is enhanced and regenerated. We are learning and working with soil microbiology.
- People are connected to the land, making it a joyful act to garden, compost, buy food locally, farm, etc.
- Food production is enhanced on the island in a way that benefits our environment, regenerating it, not depleting it.
- We recognise and support the role of plant based eating (reduced, limited or no animal derived foods) in reducing our environmental impacts.
- We grow and support our living seed bank that is used, propagated, shared around and kept alive.
- We work to eliminate waste from packaging across the food system.



ACCESS TO FOOD

- Everyone on the island has access to affordable and healthy food that is culturally appropriate.
- Zero hunger.
- Supporting and enhancing our existing food initiatives that sustain our hungry and those unable to continuously feed themselves and their families.
 - Affordable food is available, with dignity, in an easy to get to location.



We,

support the principles of this charter to improve the food system of Waiheke.

This charter was prepared by the Waiheke community with support from the Waiheke Local Board

Proudly supported by
Waiheke Local Board
Auckland Council



2023





WAIHEKE

Local Board Report – November 2023

**MAKING
GREAT PLACES
AUCKLANDERS LOVE**
PARKS & COMMUNITY FACILITIES



PREPARED BY SHANE HOGG – AREA OPERATIONS MANAGER

Parks & Community Facilities | Customer and Community Services Directorate

Proudly supported by





PERFORMANCE REPORTING

Audit Results and Request for Service

Request for Service Received

Total raised for FY23/24 YTD **490**

Waikeke RFS Breakdown



*Only includes RFS that have resulted in a Work Order for action.

Breakdown of Top 5 Request for Service for November

Service Name	#Received
Carpentry Maintenance Service	17
Electrical Maintenance Service	7
Plumbing Maintenance Service	19
Structure Maintenance and Repairs	1
Tree Maintenance - General	13

Breakdown of Top 5 Request for Service FY23/24 YTD

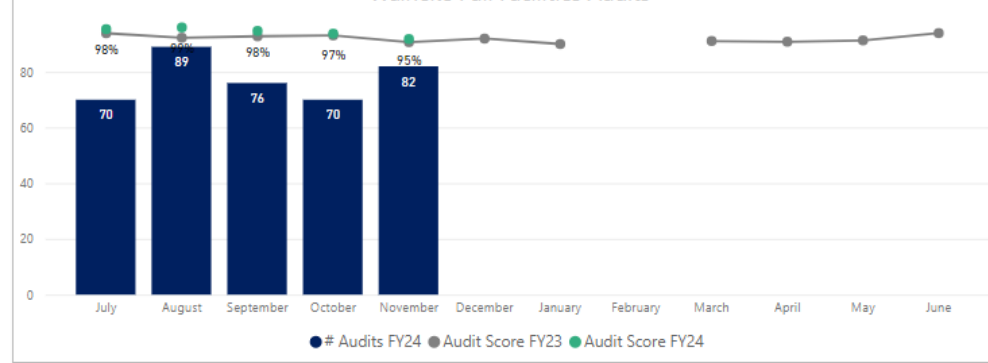
Service Name	#Received
Carpentry Maintenance Service	60
Electrical Maintenance Service	61
Plumbing Maintenance Service	75
Structure Maintenance and Repairs	20
Tree Maintenance - General	126

COMMENTARY

This information is set to be incorporated into the next report update, contributing to its enhancement and completeness.

Audit Results

Waikeke Full Facilities Audits



The highlights and lowlights of audits undertaken FY23/24 YTD are:

Highlights YTD
Turf
Sportsfields
Response WO
Litter
Furniture, Playgrounds & Recreational Equipment

Lowlights YTD

COMMENTARY

This information is set to be incorporated into the next report update, contributing to its enhancement and completeness.



MAINTENANCE DELIVERY UPDATE

Ostend Domain

We have cleaned the boat seat, removed the flaking paint, and applied Graffiti Guard coating to protect it from vandalism.





MAINTENANCE DELIVERY UPDATE

Palm Beach Miro Road beach access

We have cleaned the accessway and cleared the grass, preparing it for summer.

Before



After





MAINTENANCE DELIVERY UPDATE

Surfdale Hall Reserve and Foreshore

We have completed preventative maintenance on the Surfdale Hall to ensure it is safe for use.

Before



After





MAINTENANCE DELIVERY UPDATE

Omiha Beach Reserve

We have replaced the internal workings and hot plate of the single BBQ.





MAINTENANCE DELIVERY UPDATE

Anzac Reserve

We have restored the bench seat top at Anzac Reserve.





MAINTENANCE DELIVERY UPDATE

Shade sails

We have installed the shade sails across our play spaces on the island for the summer season.

Surfdale Hall Reserve and Foreshore.



Little Oneroa



Continued on next slide....



MAINTENANCE DELIVERY UPDATE

Shade sails

Palm Beach Reserve





MAINTENANCE DELIVERY UPDATE

Cable Bay

We installed the new signage at Cable Bay.



Tawaipareira Reserve Project Update

Works are progressing well at Tawaipareira Reserve. The skatepark remains open for public use but the carpark has been blocked off. Works completed to date:

- Paths have been formed for the learn to ride track and the pump track will be assembled second week of December.
- Compaction works completed for shade sail and basketball court which has passed geotechnical inspection. Concrete pour expected for basketball court and shade sail area second week of December.
- Contractor is expected to demobilize before the end of December with construction fencing still in place to promote grass strike until the first week of January 2024. Carpark will be open to the general public during the Xmas break.
- Minor works such as pump track edging and mulching of gardens will be completed in January.
- Shade sail installation and artworks for Basketball court are expected to be completed by the second week of February 2024.



Scour Protections Works – Waiheke Golf Club

The excessive amounts of rainfall and storms we've had this year have caused unexpected scouring adjacent to the bridge abutments at Waiheke Golf Club.

These scour protection works are involved:

- Supply and install small rock walls at 3x corners of the bridge,
- Shape to ensure stormwater flow is away from the structure,
- Provide a similar aesthetic to the existing rock wall,
- Place loose gabion rock at the base of the rock wall (shown in black).

These minor works were funded from the Waiheke storm and slip remediation budget line.

Note that we are still populating a wider scope of works required for the other slips/storm damage assets in Waiheke.



Arboriculture Maintenance, Matiatia Ferry Terminal, Waiheke



Matiatia Pine removal.

The day finally came for the removal of the Matiatia Pine removal, the tree has been an iconic visual, for all who came to Waiheke and disembarked from the ferry at Matiatia, whether that be a pleasurable view, or some thought an ugly view of the tree still provided amenity and eco-system values for the duration of its lifespan,. It had been closely monitored over the years and more, so in recent times, after it was noted, the tree had developed borer and had started to decay at the base. The decision was made to remove the tree as a proactive approach to preventing a future failure with so many high-value targets in its vicinity. We will potentially look to replant in the next upcoming planting season. Treescape undertook the removal in a professional and timely manner, finishing the job in a single day.

Arboriculture Maintenance, Watson Road, Waiheke



Watson Road, Waiheke – Pohutukawa reduction and removal of damaged limb –

Treescape also undertook another tricky job on a Pohutukawa that had had a recent large limb failure. They utilised the crane Hi-Ab and cutter head to remove the hung-up limb as well as perform a crown reduction to minimise future failure again due to high-value targets such as the road, powerlines and resident property. The tree looks well maintained and the risk has been managed.





Arboriculture Maintenance, Oneroa Town Centre



Ocean View Road, Waiheke Island

Treescape undertook night works, to carry out the pruning of the multiple Palms in Oneroa town centre, the palms are looking well maintained and ready for the summer influx of people visiting the island. Job well done by Treescape under difficult logistics.

Arboriculture Maintenance, Oue Road, Walking Tracks



Oue Road, Waiheke Island

Treescape carried the removal of fallen trees along a walkway on the walking tracks near Oue Road. The trees had failed blocking the paths for access. The paths are now clear for public access and the risk to the public had been mitigated.



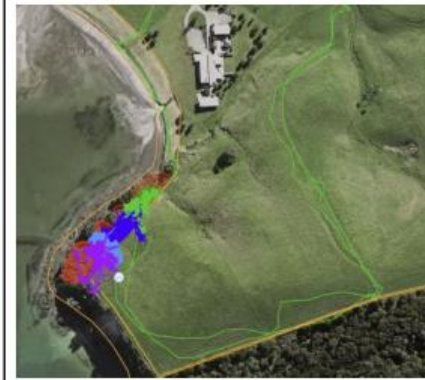
ECOLOGICAL UPDATE

Ecological maintenance



We completed a RFS in Onetangi Sport Park.

Weed control work in high value ecological areas on Local Parks continued. This work is currently delivered by Local Waiheke Island Approved Supplier, Free The Tree. The maps show coverage they are achieving in some of the sites they worked this month. (Each team member carries a GPS to map tracklogs of where they have worked.)



In the Church Bay Esplanade Reserve, we made steady progress through a forest of Woolly nightshade and Rhamnus and into a



We completed catch and release of Climbing asparagus in Victoria Reserve and have foliar sprayed about 2/3 of this steep and bushy site. I

Te Whau Esplanade Reserve. I completed a partial scope of the Te Whau Esplanade Reserve.



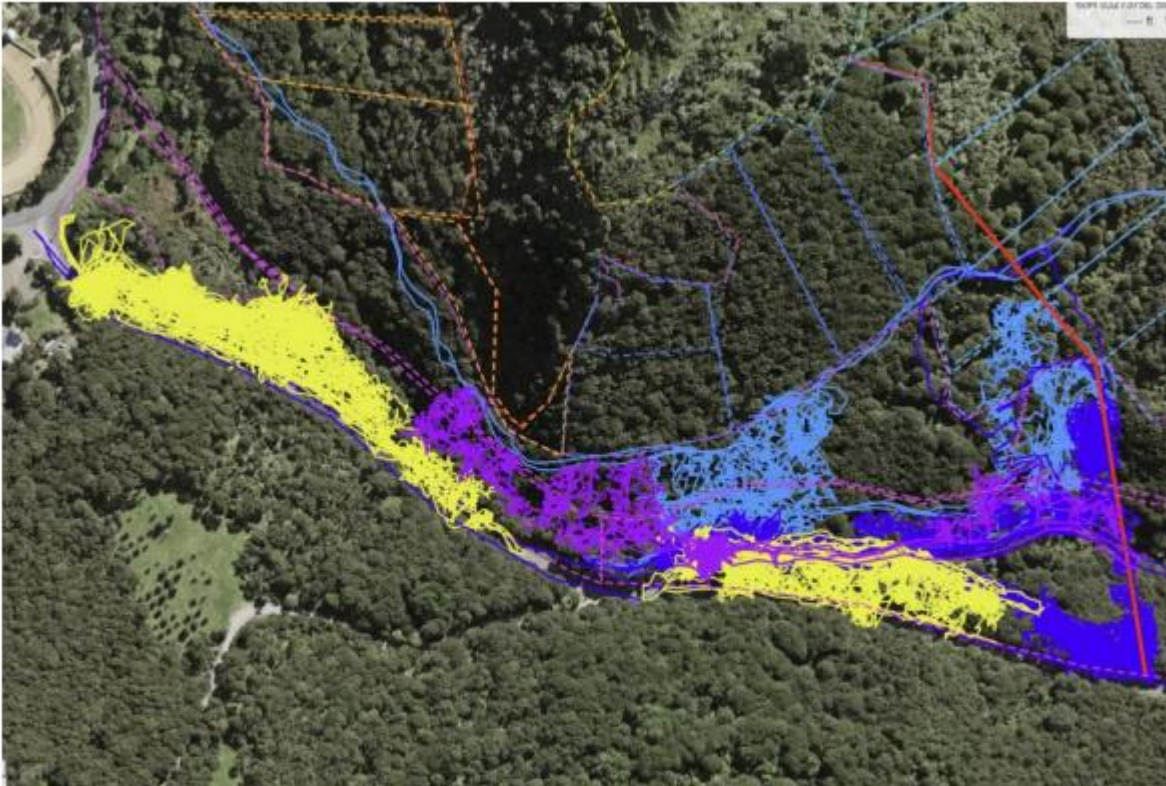
Our work near the houseboats has stood the test of time and I will programme half a day to follow





Ecological maintenance cont...

Rangihoua NETR Climbing Asparagus.



Track colour code: **Week 1**, **Week 3**, **Week 4**, **Week 5 (01/12/2023)**

We continued to build on October's efforts this month.

Initial and follow up control (from FY 2022/2023) in all the Base SZs is now complete with the

Additional 'initial control' of climbing asparagus and woolly nightshade is funded by NETR funding administered by Environmental Services, but delivered through the PCF eco contract.



NOTIFICATIONS

Community leasing and land-owner approvals

Community Leasing

Community lease movements

Building lease proposal for the **Ngāti Paoa Iwi Entity** at Te Waero Awe Houkura Recreation Reserve/Blackpool Park, Former Blackpool School Library building, 23-35 Nikau Road, Oneroa

- Staff have forwarded the application for a new community lease to Ngāti Paoa for completion and return, along with supporting documentation, as soon as practicable.
- Land Advisory Services have confirmed the underlying land status of the Former Blackpool School Library building as a **classified** recreation reserve.
- Staff arranged for an asset assessment report for the Former Blackpool School Library building, with completion anticipated by the end of January 2024.
- Engagement with mana whenua for feedback on the proposal is currently underway and will conclude on 26 January 2024.
- The building's current tenant, Otherworld Productions Incorporated, has been kept informed of the proposal's progress and the anticipated timelines.

Land Advisory

Land-owner applications received are assessed by Land Use Advisory and reviewed by Community Facilities staff. The board will be contacted for feedback in due course.

There was one landowner approval application **received** in the Waiheke Local Board area during November 2023:

- An application by Waiheke Creative Ltd to sell beach style merchandise (street trading) at Oneroa Beach Reserve.

WORK PROGRAMME UPDATE

Changes to agreed FY24 Project Delivery Programme

#31031 Tawaipareira Reserve stage two - replacement of play space, bike track, new flying fox

Minor Change

To mitigate the current budget shortfall for #31031 Tawaipareira Reserve stage two - replacement of play space, bike track, new flying fox, we are proposing to increase the FY24 budget from unallocated FY24 funds. This increase will encompass \$92,500 for renewals, with an additional allocation of \$47,500 of unallocated LDI. This will be discussed with the local board in early 2024.



WORK PROGRAMME UPDATE

Changes to agreed FY24 Project Delivery Programme

Minor Change

Projects affected by minor change over the previous month:

ID REF	Activity Name	Change
	Nothing to report	

Substantial Change

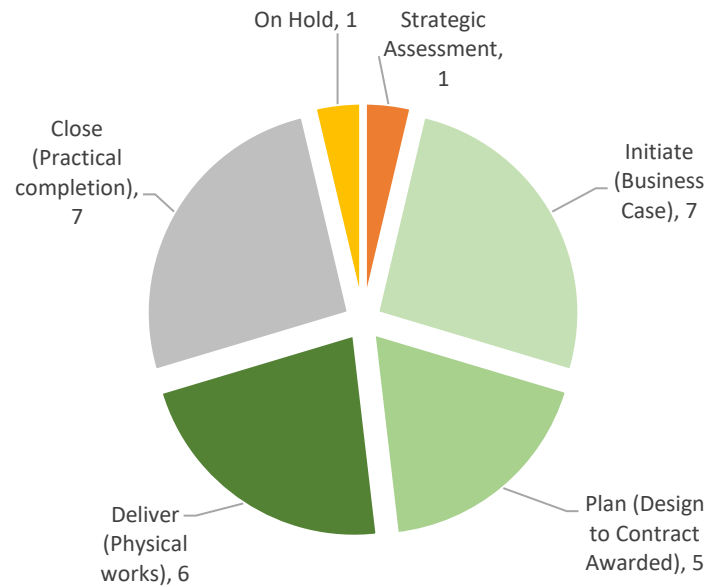
Projects affected subject to substantial change:

ID REF	Activity Name	Change
	Nothing to report	

Project Delivery

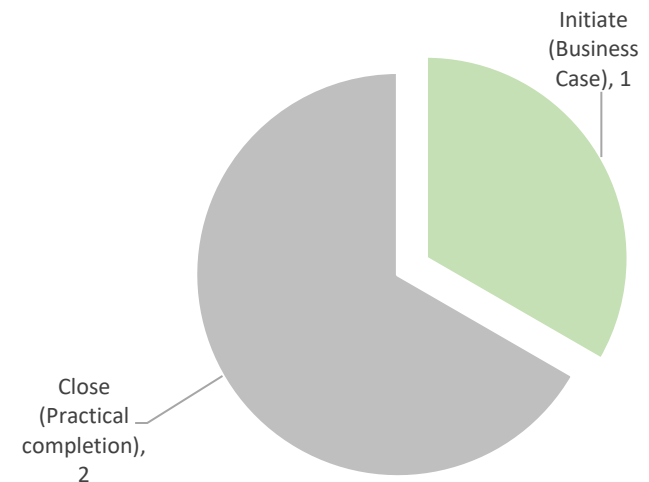
Waiheke Local Board - Project Status

Total Number of Projects - 27



Waiheke Local Board - Project Status

Total Number of LDI Projects - 3





PROJECT DELIVERY STATUS

				Initiate	Preliminary design	Detailed Design	Tender Process	Construction	Defects
				2023/2024 - Current year					
Activity Name	RAG	Local Board Commentary	Timeline	Q1	Q2	Q3	Q4		
Artworks and Community Centre - Comprehensive Renewal	Green - On Track	Current status: The architect has been briefed and is currently awaiting the Offer of Service. Next steps: Proceed by formally engaging the architect to commence the project.	Baseline Forecast/Actual						
Carpark and Roading - Renewals - Waiheke	Green - On Track	Current status: The detailed design is completed and tender documents compiled. Next steps: The tender process is underway to procure physical works.	Baseline Forecast/Actual						
Citizens Advice Bureau - interior and exterior renewals - Waiheke	Green - On Track	Current status: Detailed design completed for structure remediation and building consent has been lodged. Next steps: Proceed with tender and physical works are expected to commence in March 2024.	Baseline Forecast/Actual						
Golf Clubhouse - interior and exterior renewals - Onetangi Sports Park	Green - On Track	Current status: A site visit has taken place involving stakeholders and the engineer to establish the project scope. Next steps: Proceed to assign the engineering work and advance the design phase accordingly.	Baseline Forecast/Actual						
Hekerua Bay Reserve - renew path and install retaining wall	Amber - At Risk	Current status: Design works for the retaining wall are completed. Meet with stakeholders and discuss retaining wall alignment and current encroachment of the carpark. Retaining wall footings are being re-designed, access will be required from Neighbours land to install piles for retaining wall. Next steps: Discuss options for footings and get permission from the Neighbour to allow access. Building consent documentation is being prepared for lodgement.	Baseline Forecast/Actual						
Little Oneroa Reserve - renew play space, stairs and pathways	Green - On Track	Project completed.	Baseline Forecast/Actual						
Minor Capital works - Waiheke	Green - On Track	Current status: This budget is for the delivery of small works through the Facility Managers and items will be identified over the course of the financial year. Next steps: Delivery of minor capital works items.	Baseline Forecast/Actual						
Onetangi Sports Park - general renewals	Green - On Track	Current status: Resource consent was obtained for installing an additional relocatable style changing room with toilets and utility connections. Design works progressing for the foundation and utility connection for the changing room. Next steps: Lodge building consent along and place order for a second changing room.	Baseline Forecast/Actual						



PROJECT DELIVERY STATUS

				Initiate	Preliminary design	Detailed Design	Tender Process	Construction	Defects
				2023/2024 - Current year					
Activity Name	RAG	Local Board Commentary	Timeline	Q1	Q2	Q3	Q4		
Open space furniture, fixings, equipment, BBQs and signage - renew - 2023/2024 - Waiheke	Green - On Track	Current status: Investigation and scoping of project options are ongoing in collaboration with the contractor and operations staff. Next steps: Finalising project scoping and initiating procurement for physical works.	Baseline Forecast/Actual						
Open space toilets - develop and renew stage two - Waiheke	Green - On Track	Current status: The physical works at Oneroa Village toilet have been completed. Investigation is underway at Omiha Beach toilet which has been closed due to recent slips. Next steps: Continue with investigation and design for Omiha Beach toilet and provide an update to stakeholders by February 2024.	Baseline Forecast/Actual						
Rakino Hall relocation - Rakino Island	Green - On Track	Current status: The project is kicked off and the site investigations and initial planning assessment are under way. Next steps: Concept plan consultation and approval.	Baseline Forecast/Actual						
Tawaipareira Reserve stage two - replacement of play space, bike track, new flying fox	Green - On Track	Current status: Physical works have commenced onsite from October 2023. Next steps: Monitor physical works expected to be completed by February 2024.	Baseline Forecast/Actual						
Te Whau Esplanade Reserve - stabilise Hitapa track	Amber - At Risk	Current status: This project is on hold. A walkover of the site with internal geotechnical specialists in October 2019 confirmed there are limited works required relating to slip repairs. This track renewal will be bundled with the track renewal programme, enabling a renewal of the walking track in its entirety. The project remains on hold until the landslips have been repaired. Resource consent has been extended to allow physical works to be completed in future years. Next steps: An existing design for the upgrade is being reviewed and cost. Once the slips have been remediated, work can be planned with the Waiheke Local Board.	Baseline Forecast/Actual						



PROJECT DELIVERY STATUS

		Initiate	Preliminary design	Detailed Design	Tender Process	Construction	Defects		
						2023/2024 - Current year			
Activity Name	RAG	Local Board Commentary	Timeline	Q1	Q2	Q3	Q4		
Tracks and pathways - renew - 2021/2022+ - Waiheke	Green - On Track	<p>Current status:</p> <p>Priority 4: Matiatia Owhanake (Matiatia Wharf to Owhanake Bay)- Track completed.</p> <p>Priority 5: Te Aroha Walkway - Resource consent lodged and awaiting decision. Reprioritising projects with the local board.</p> <p>Priority 6: Glenbrook Reserve (Okoka Road through Glenbrook Reserve to Glenbrook Road - Resource consent granted. Physical works tender is currently being procured with the successful supplier. Reprioritising projects with the local board.</p> <p>Priority 11: Matiatia to Owhanake sidetrack (The entrance is opposite the car rental at Matiatia and traverses past the car garaging business to Delamore Drive) - Resource consent granted. Physical works tender is currently being procured with the successful supplier. Reprioritising projects with the local board.</p> <p>Priority 13: Trig Hill to Awaawaroa Bay- Resource consent granted. Physical works tender is currently being procured with the successful supplier. Reprioritising projects with the local board.</p> <p>Priority 14: Te Wharau Bay - Adjacent to the toilet - Resource consent lodged awaiting decision. Reprioritising projects with the local board.</p> <p>Priority 15: Te Wharau Bay - Southern Bay access - Resource consent lodged awaiting decision. Reprioritising projects with the local board.</p> <p>Priority 17: Park Point (From Church Bay Farm along the coast to Te Wharau Bay - Resource consent lodged awaiting a decision. Reprioritising projects with the local board.</p> <p>Next steps:</p> <p>Priority 2: Matiatia Owhanake (Matiatia Wharf to Owhanake Bay) - continue to build track during July.</p> <p>Priority 5: Te Aroha Walkway - Procuring physical works and award to the successful tenderer. Reprioritising projects with the local board.</p> <p>Priority 6: Glenbrook Reserve (Okoka Road through Glenbrook Reserve to Glenbrook Road - next to Petra's House.)- Reprioritising projects with the local board.</p> <p>Priority 11: Matiatia to Owhanake sidetrack (The entrance is opposite the car rental at Matiatia and traverses past the car garaging business to Delamore Drive) - Reprioritising projects with the local board.</p> <p>Priority 13: Trig Hill to Awaawaroa Bay-Reprioritising projects with the local board.</p> <p>Priority 14: Te Wharau Bay- Adjacent to toilet. Reprioritising projects with the local board.</p>	Baseline						
			Forecast/Actual						



PROJECT DELIVERY STATUS

				Initiate	Preliminary design	Detailed Design	Tender Process	Construction	Defects
				2023/2024 - Current year					
Activity Name	RAG	Local Board Commentary	Timeline	Q1	Q2	Q3	Q4		
Tracks and pathways - renew - 2022/2023 - Waiheke	Green - On Track	<p>Current status:</p> <p>Priority 4 physical works completed in August 2023.</p> <p>The project has been approved, scoping of tracks is underway, assessing the condition on the following priority:</p> <p>Priority 8: Wharetana Bay (Rothschild Terrace to the Bay). Prestart meetings to be held prior to Christmas, with Physical works being planned for January 2024.</p> <p>Priority 9: Omiha Beach Reserve (Beach to Upland Road, Rocky Bay). Prestart meetings to be held prior to Christmas, with Physical works being planned for January 2024.</p> <p>Priority 10: Island Bay (Fossil Bay to Owhanake Bay). Prestart meetings to be held prior to Christmas, with Physical works being planned for January 2024.</p> <p>Priority 12: Church Bay from Matiatia to Church Bay Road (From Matiatia Bay, around the coast, past Church Bay and up to Church Bay Road). Prestart meetings to be held prior to Christmas, with Physical works being planned for January 2024.</p> <p>Next steps:</p> <p>Complete physical works and close out projects.</p>	Baseline						
			Forecast/Actual						
Tracks and pathways - renew - 2023/2024 - Waiheke	Green - On Track	<p>Current status: Designs and consents have been completed, the next step is to reprioritise with the Waiheke Local Board.</p> <p>Next steps: Once priorities have been agreed upon, a physical works programme can be created.</p>	Baseline						
			Forecast/Actual						
Waiheke - remediate 2023 storm and cyclone damaged assets	Green - On Track	<p>Current status: Arrangements are being made for a site visit involving stakeholders to initiate the scoping process.</p> <p>Next steps: Coordinate a site visit with the engineer and proceed to award the design contract.</p>	Baseline						
			Forecast/Actual						
Waiheke - Urban Forest (Ngahere) Strategy - Growing Phase	Green - On Track	<p>Current status: The urban forest specialist is scheduled to engage in consultations with the Waiheke Local Board regarding recommendations for the action plan.</p> <p>Next steps: The next steps involve the identification of planting locations on a map and the initiation of procurement for physical works.</p>	Baseline						
			Forecast/Actual						
Waiheke Library - refurbish building	Green - On Track	<p>Current status: Contractor completed an inspection and pricing construction.</p> <p>Next steps: Engaging with professional services if required once the inspection is complete.</p>	Baseline						
			Forecast/Actual						



WAIHEKE

Local Board Report – November 2023

MAKING
GREAT PLACES
AUCKLANDERS LOVE
PARKS & COMMUNITY FACILITIES

Merry Christmas



Happy New Year