

# Waiheke Local Board Workshop Agenda

**Date of Workshop:** Wednesday 6 March 2024  
**Time:** 10:30  
**Location:** Waiheke Local Board, 10 Belgium Street; MS Teams

Time	Workshop Item	Governance role	Purpose	Presenter(s)	Proposed Outcome(s)
10:30	<b>Item 1</b> AT Project Kōkiri engagement levels <b>Attachment</b> Presentation	Local initiative / preparing for specific decisions	Review programme / projects proposals	Alex Elton-Farr <i>Elected Member</i> <i>Relationship Partner</i>	Discuss engagement levels on local AT projects and programmes.
11:30	<b>Item 2</b> Waiheke Adult Learning (WAL) Te Reo classes <b>Attachment</b> Presentation	Keeping informed	Informal dissemination	Fiona Gregory <i>Community Broker</i>  Jo Nuttle <i>Manager, WAL</i>	WAL will update members on the 2023 programme and present aspirations for 2024 programme
12:00	<b>Item 3</b> Youth Needs Assessment (YNA) contractor update <b>Attachments*</b> YNA proposal	Keeping informed	Informal dissemination	Jules Radford-Poupard <i>Lead Researcher YNA</i> <i>Co-Director Point Research</i>  Fiona Gregory <i>Community Broker</i>	Members to have an introduction to the YNA and lead researcher.
<p>*Part of this workshop is required to be confidential</p> <p>Reason: The public conduct of the part of the workshop would be likely to result in the disclosure of information for which good reason for withholding exists under section 7.</p> <p>Particular interest(s) protected:</p> <ul style="list-style-type: none"> <li>• LGOIMA s7(2)(b)(ii) - The withholding of the information is necessary to protect information where the making available of the information would be likely unreasonably to prejudice the commercial position of the person who supplied or who is the subject of the information.</li> </ul>					
12:30	Lunch Break				

Time	Workshop Item		Governance role	Purpose	Presenter(s)	Proposed Outcome(s)
13:00	Item 4	Desley Simpson Deputy Mayor visit	Input to regional decision-making	Provide feedback on policy options	Desley Simpson <i>Deputy Mayor</i>	The deputy mayor is visiting with local board members to discuss key elements of the LTP and local priorities.
14:00	Item 5	Community Facilities & Parks update <b>Attachment</b> January update	Keeping informed	Informal dissemination	Shane Hogg <i>Manager Area Operations</i>  Bridget Velvin <i>Facilities Manager</i>  Sue Gluskie <i>Facilities Coordinator</i>  Jacqui Thompson-Fell <i>Parks &amp; Places Specialist</i>	Members are updated on CF projects and activities in the months of January and progress of various programmes.

#### Governance Role

1. Accountability to the public
2. Engagement
3. Input to regional decision-making
4. Keeping informed
5. Local initiative / preparing for specific decisions
6. Oversight and monitoring
7. Setting direction / priorities / budget

#### Role of Workshop:

- (a) Workshops do not have decision-making authority.
- (b) Workshops are used to canvass issues, prepare local board members for upcoming decisions and to enable discussion between elected members and staff.
- (c) Workshops are not open to the public as decisions will be made at a formal, public local board business meeting.
- (d) Members are respectfully reminded of their Code of Conduct obligations with respect to conflicts of interest and confidentiality.
- (e) Workshops for groups of local boards can be held giving local boards the chance to work together on common interests or topics

# Waiheke Local Board Workshop Proceedings

Workshop record of the Waiheke Local Board held in person and via Teams on Wednesday 6 March 2024, commencing at 10:30am

**Member attendance:**

Cath Handley (Chair)	Bianca Ranson (Deputy)	Kylee Matthews	Robin Tucker	Paul Walden
Present	Apologies	Present	Present	Absent

Time	Workshop Item	Presenter(s)	Summary of discussion
10:30	Item 1 AT Project Kōkiri engagement levels  <b>Attachment</b> Presentation	Alex Elton-Farr <i>Elected Member</i> <i>Relationship Partner</i>	AT Relationship Partner introduced the different engagement categories developed as part of Project Kōkiri: collaborate, consult and inform. These levels of engagement were weighed against the relevant goals outlined in the Waiheke Local Board Plan 2023.  This item is expected to come to the March business meeting of the Waiheke Local Board.
11:30	Item 2 Waiheke Adult Learning (WAL) Te Reo Māori classes  <b>Attachment</b> Presentation	Fiona Gregory <i>Community Broker</i>  Jo Nuttle <i>Manager, WAL</i>  Rīhari Warnock <i>Kaiako</i>	WAL updated members on the 2023 programme and presented aspirations for 2024 programme. Kaiako Rihare Warnock described the community benefits that he has observed as a result of the courses.
12:00	Item 3 Youth Needs Assessment (YNA) contractor update  <b>Attachments*</b> YNA proposal	Jules Radford-Poupard <i>Lead Researcher YNA</i> <i>Co-Director Point Research</i>  Fiona Gregory <i>Community Broker</i>  Jo Nuttle <i>Manager, WAL</i>	Members met the YNA lead researcher to discuss the direction and progress of the project. Members gave suggestions for community members who may be able to support the research.

Time	Workshop Item	Presenter(s)	Summary of discussion
<p>*Part of this workshop is required to be confidential</p> <p>Reason: The public conduct of the part of the workshop would be likely to result in the disclosure of information for which good reason for withholding exists under section 7.</p> <p>Particular interest(s) protected: LGOIMA s7(2)(b)(ii) - The withholding of the information is necessary to protect information where the making available of the information would be likely unreasonably to prejudice the commercial position of the person who supplied or who is the subject of the information.</p>			
12:30	<b>Lunch Break</b>		
13:00	<p>Desley Simpson Deputy Mayor visit</p> <p style="text-align: center;"><b>Item 4</b></p>	<p>Desley Simpson <i>Deputy Mayor</i></p> <p>Edward Siddle <i>Chief Advisor to the Deputy Mayor's Office</i></p> <p>Miriam Bell <i>Lead Advisor, Councillor Support</i></p>	<p>The deputy mayor met with local board members to discuss key elements of the LTP and local priorities including ferry travel, housing concerns, helicopter activity and the future review of the Hauraki Gulf Islands District Plan.</p>
14:00	<p>Community Facilities &amp; Parks update</p> <p><b>Attachment</b> January update</p> <p style="text-align: center;"><b>Item 5</b></p>	<p>Shane Hogg <i>Manager Area Operations</i></p> <p>Bridget Velvin <i>Facilities Manager</i></p> <p>Sue Gluskie <i>Facilities Coordinator</i></p> <p>Jacqui Thompson-Fell <i>Parks &amp; Places Specialist</i></p>	<p>Members were updated on CF projects and activities in the months of December and January. Parks &amp; Places Specialist gave an update on the programme to remove vessels stored unlawfully on public beaches.</p>

# Waiheke Local Board AT's Work Programme

Date 6 March 2024

# What is Project Kōkiri

Auckland Transport's CEO has requested that we work more closely with the local boards.

Auckland Transport's new structure of engagement with Local Boards is named Project Kōkiri.

The aim is to develop a transparent, structured annual cycle of engagement between AT and local boards.

The overall drive of this process is to identify AT projects and programmes that the local board is interested in; and to clearly express the level of engagement that members would like to have with AT regarding the project.

AT's commitment is that if a local board prioritises a project or programme and puts it into their Kōkiri Agreement then it will be closely monitored and regularly reported in detail. Further, that if possible the local board's input will help shape delivery of the project.



# Our work today

- **Consider AT's quality advice about projects and programmes.**
- **Identify projects or programme that the local board wants to:**
  - **'Collaborate' together with AT about and lead building consensus with the community.**
  - **Be 'consulted' about by AT.**
  - **Stay well-briefed about and expects AT to keep it 'informed' about.**
- **The local board's response will be reported to AT in early-2024.**



# The terms we use

- **Collaborate:** The local board works closely with AT and leads building consensus with the local community.
- **Consult:** AT will get feedback on the project or programme from the local board. This will include regular updates and reports that the local board can resolve its feedback against.
- **Infom:** The local board will get regular updates and briefings. Members can provide their individual insights about the project.
- *Terms are from IAP2 doctrine.*





# Project **Kōkiri** process plan



AT provides local boards with quality advice about planned work

AT EMRPs support local boards to consider the advice provided and develop their feedback

Local board respond  
(Report and resolutions)

AT responds

AT EMRPs support local boards to consider response provided and develop their final Kōkiri agreement

Kōkiri Agreement resolved

## Local Board Plans

- Signed off 31 October.
- Provide information that helps Auckland Transport:
  - Provide 'quality advice' for the Annual Local Board Transport Plan/Agreements
  - Develop the Regional Land Transport Plan



# Summary of Waiheke's Local Board's transport goals

- 1) Well maintained roads
- 2) Reliable transport routes
- 3) Mātiatia should be a welcoming gateway to Waiheke for visitors to Waiheke, as well as being a well-organised commuting and homecoming experience for locals,
- 4) Safe for pedestrians and cyclists is an absolute priority
- 5) Public transport bus network
- 6) Advocacy: For Waiheke electric ferry charging facilities.



**Projects or  
programmes  
that AT  
suggests are  
‘Collaborate’**

- **LBTCF Funded Cycle Path**
- **The Esplanade**



**Projects or  
programmes  
that AT  
suggests are  
‘Consult’**

- **Road Safety - Katoa Ka Ora - Implementation  
Regional Implementation of Speed limit  
changes**
- **Matiatia Wharf renewal programme**



**Projects or  
programmes  
that AT  
suggests are  
  
'Inform'**

- **Awaawaroa Rd Bridge project**
- **Road renewals**
- **Footpath renewals**
- **Orapiu - project**



**Projects or  
programmes  
that AT  
suggests**

**‘Are advocacy  
issues’**

- **Installation of Waiheke electric ferry charging facilities**
- **Public Transport options**



Contact:

Ben Stallworthy – [Ben.Stallworthy@at.govt.nz](mailto:Ben.Stallworthy@at.govt.nz)

John Gillespie – [John.Gillespie@at.govt.nz](mailto:John.Gillespie@at.govt.nz)

Jane Winterman – [Jane.Winterman@at.govt.nz](mailto:Jane.Winterman@at.govt.nz)

*Let's go there* 



# Te Reo Māori



## Waiheke Adult Learning

Waiheke Adult Literacy Inc (known as Waiheke Adult Learning) provides community adult education services, based at its learning centre at Artworks, Oneroa.

WAL runs an ongoing programme to support the Waiheke community learn Te Reo Māori. Classes are held throughout the year and offered at a range of levels including beginner, advanced beginner and intermediate.

Between 40 – 50 students are enrolled each term with many students re-enrolling up to 4 times over the year building a supportive community of learners.

The logo for Waiheke Adult Learning is displayed in a white rectangular box. It consists of the words "WAIHEKE", "ADULT", and "LEARNING" stacked vertically in a bold, blue, sans-serif font. The text is centered within the box.

**WAIHEKE  
ADULT  
LEARNING**

## 2022 - 2023 Kaupapa

Since July 2022, support from the Waiheke Local Board has enabled WAL to provide classes at no cost to Ngāti Pāoa and other mana whenua and mātāwaka students as a step towards providing equity and access to Te Reo Māori classes and to ensure that Māori have the opportunity to learn the language of their tūpuna.

The programme acknowledges that Māori adult learners may face additional psychosocial and economic barriers to learning Te Reo Māori compared to non-Māori and may therefore require additional support to re-engage with learning as adult students.

Kōrero about the 'loss of language trauma' for Māori is often shared by students during times of whanaungatanga.

MĀORI  
MADE  
EASY

**For everyday learners  
of the Māori language**  
Scotty Morrison



## Kaiako Kaiwai Rhind

Ko Te Uri Karaka te hapū. Ko Ngāti Paoa te iwi.

Ko Ngāti Pikiao te hapu Ko Te Arawa te iwi.

Ko Te Rarawa me Taranaki hoki ōku iwi. He kaiako ahau o Te Reo Tūpuna ki nga tamariki me nga pakeke.

Kua roa ahau e whakaako ana, e ako ana i Aotearoa me tāwāhi.

Waimarie ahau ki te noho ki konei i Te Motu Araihoa tōku ūkaipō.



## Outcomes

“Having the capacity to offer Te Reo Māori at no cost holds the space of opportunity for learners to engage as they are able and builds a community of learning.

It was encouraging to see initial uptake by young Māori in the programme and also intergenerational whānau engagement. Some students from previous years have returned and others connect with and bring in others from their whānau or hāpori. Word of mouth is getting out to more Māori community members and it feels right as a kaiako Māori, he uri o Pāoa, to be teaching other Pāoa and Matā Waka on Te Ūkaipō o Pāoa, Waiheke.

To be supported to achieve a desire to learn one’s heritage language is building individual, whānau, hapu and community capacity and capability.”

Kaiwai Rhind

Kaiako



**My name is Kim and this is my mum Helen. I came to WAL to start my Te Reo Māori journey and I absolutely love it. When Kim started coming to classes, that opened the door for me. It is never too late to learn!**





**Ko Wiremu Te Taniwha tōku ingoa.  
I have been involved with WAL as  
a tutor and now I am back as a  
student of Te Reo Māori.  
The programmes enable us all to  
uplift ourselves through learning.**



<b>2023 Term 1, 2, 3 &amp; 4 Enrolments</b>		
Total enrolments for Te Reo Māori	162	
Students who identify as Ngāti Pāoa/Mātā Waka	57	38%

*'In learning more Te Reo it has made me more confident in saying things like my pepeha'*

*'I've been wanting to learn for a long time so this is great for me.'*

*'I've never been able to learn all of the pronouns, I like learning like this.'*

*'I have to learn to speak to my mokos'*

*'I want to learn what my ancestors were beaten for speaking'*

*'I like knowing a bit more when I hear it being spoken'*



Kia ora. Kei te ako mātou i te Reo Māori! We started our course at 35 weeks pregnant and having Kawhia is a driver for our learning. Now my mum is learning Te Reo as well! As adults we all bring our passion for learning.



# 2024 Kaupapa

The ongoing programme will consist of 2 hour classes x 8 weeks held 4 times a year. Four classes each term are scheduled.

The intention this year is also to include wānanga and explore opportunities to collaborate with Piritahi Marae.

The programme is offered at a range of levels to accommodate diverse students, their reo levels and availability. It will respond to the needs of Māori students with tikanga such as whanaungatanga, manaakitanga, karakia, waiata and reo-a-iwi. Resources including books and games will be provided.

This programme has been established by Kaiwai Rhind, Ngāti Pāoa / Hapū o Te Uri Karaka me Ngāti Hura ki Waiheke a qualified teacher of 30 years, who holds a Bachelor in Māori Education.

Kaiwai is taking leave of absence in 2024 but will maintain a mentoring role with Kaiako Rihari Warnock nō Ngāti Manu, Ngāpuhi, Te Mahurehure me Ngāti Pākehā and Kaiako Brent Simpson.

2024 Term 1 Enrolments		
Total enrolments for Te Reo Māori	74	
Students who identify as Ngāti Pāoa/Mātā Waka	23	31%





# Kaiako Rīhari Warnock & Brent Simpson

## Rīhari Warnock

Nō Ngāti Manu, Ngāpuhi, Te Mahurehure me Ngāti Pākehā ahau. He uri ahau i tōku tupuna Te Whareumu.

I tipu ake au i Manawatū, e noho ana au kei Waiheke.

He ringatoi ahau.

I am an artist who is very lucky to call Waiheke home.

## Brent Simpson

Tēnā koutou katoa. Ko Brent Simpson tōku ingoa.

I am a teacher at Waiheke High School and a passionate advocate for the use of te reo Māori in Aotearoa.



**WAIHEKE ADULT LEARNING**





# WAIHEKE

Local Board Report – DEC 23 & JAN 24

MAKING  
GREAT PLACES  
AUCKLANDERS LOVE  
PARKS & COMMUNITY FACILITIES



**PREPARED BY SHANE HOGG – AREA OPERATIONS MANAGER**

Parks & Community Facilities | Customer and Community Services Directorate

Proudly supported by

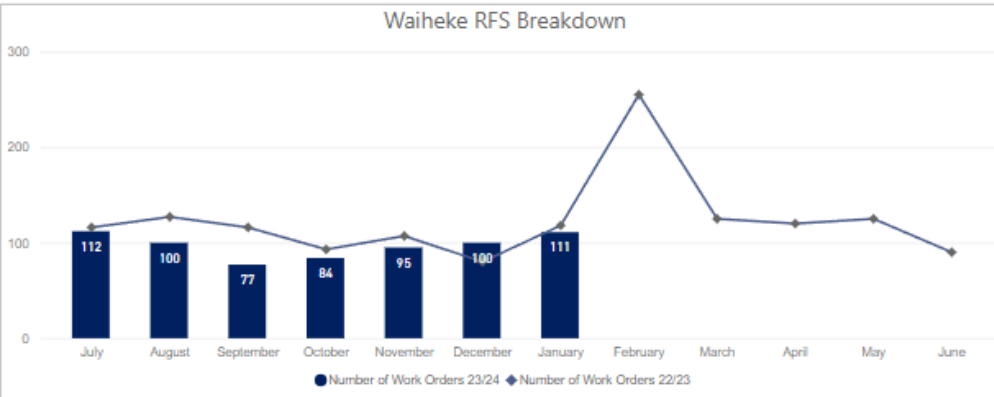


# PERFORMANCE REPORTING

## Audit Results and Request for Service

### Request for Service Received

Total raised for FY23/24 YTD **679**



\*Only includes RFS that have resulted in a Work Order for action.

Breakdown of Top 5 Request for Service for January

Service Name	#Received
Carpentry Maintenance Service	9
Furniture and Fixtures Maint and Repairs	5
Plumbing Maintenance Service	16
Structure Maintenance and Repairs	2
Tree Maintenance - General	19

Breakdown of Top 5 Request for Service FY23/24 YTD

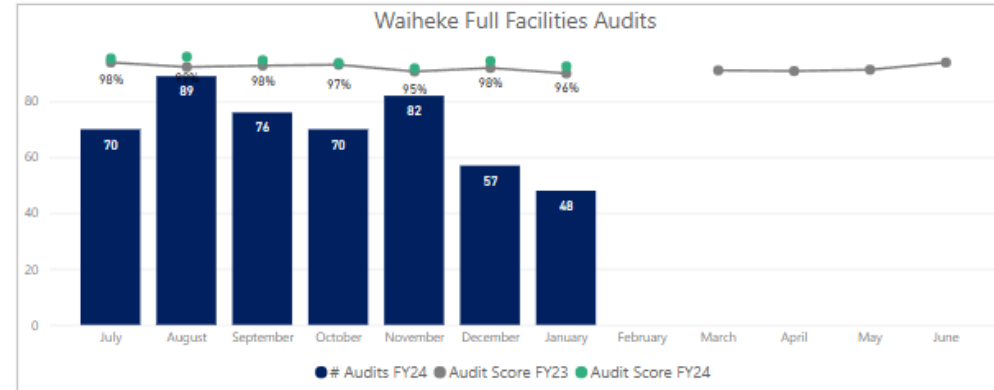
Service Name	#Received
Carpentry Maintenance Service	77
Electrical Maintenance Service	74
Plumbing Maintenance Service	123
Structure Maintenance and Repairs	30
Tree Maintenance - General	158

### COMMENTARY

Requests for service are consistent with last years levels. February 2023 was only a spike in requests due to the Flooding and cyclone events we had so we expect this coming February to be consistent with January's levels.

Building facilities continue to have the highs request however we do not have many outstanding requests to be completed as noticed in the audit highlights on the response WO's.

### Audit Results



The highlights and lowlights of audits undertaken FY23/24 YTD are:

Highlights YTD
Turf
Sportsfields
Response WO
Litter
Furniture, Playgrounds & Recreational Equipment

Lowlights YTD
---------------

### COMMENTARY

Audit scores are lower than expected but not at levels where contract management intervention is needed. Less audits were done for January and December due to the summer break and should return to normal levels in February.

No lowlights have been noted over the past 2 months however we will continue to work with our contractors to look at further opportunities to improve their service.



# MAINTENANCE DELIVERY UPDATE

## Palm Beach Reserve - Miro Road

We installed two new bollards because people were getting through the existing ones and parking on the grass.





# MAINTENANCE DELIVERY UPDATE

## Putiki Reserve

We continue to proactively maintain the boardwalk at Putiki Bay by conducting regular cleaning.





# MAINTENANCE DELIVERY UPDATE

## Onetangi Beach Stairs

We undertook maintenance on the Onetangi Beach Stair to remove sand and grass buildup in preparation for a busy summer.

**After**

**Before**







# MAINTENANCE DELIVERY UPDATE

## Newton Reserve

We are currently conducting maintenance on signage and carrying out painting work.

**Before**



**After**



## Paper Towel Dispensers

We are actively removing paper towel dispensers from public toilets where we have hand dryers. This will reduce our paper consumption and waste. Paper towels were installed in all public toilets during COVID-19. We will be storing the dispensers in case they are ever needed again.





# MAINTENANCE DELIVERY UPDATE

## Surfdale Post Office OSPO

The tenants came up with a design for new shelves in the kitchen to improve the use of space. Our buildings contractor made and installed them.





# MAINTENANCE DELIVERY UPDATE

## Alison Park - Sustainability Centre

There were several deck boards rotting. We regularly had to go to a site and hammer in nails that had popped loose. We decided to replace the entire deck with a hardwood timber screwed into place.

**Before**



**After**





# MAINTENANCE DELIVERY UPDATE

MAKING  
GREAT PLACES  
AUCKLANDERS LOVE  
PARKS & COMMUNITY FACILITIES

## Alison Park - Sustainability Centre





# MAINTENANCE DELIVERY UPDATE

## Music Museum

We had some issues with the electric set-up in the kitchen. Programmed have installed more plugs to make the kitchen safer.





# MAINTENANCE DELIVERY UPDATE

## Tawaipareira Reserve

The half-pipe vents were vandalized again, and we have replaced them.

**Before**



**After**





# MAINTENANCE DELIVERY UPDATE

## Matiatia Foreshore

We have installed new signage in the hope of deterring people from feeding the ducks.







# MAINTENANCE DELIVERY UPDATE

## Matiatia Foreshore

We have installed the second "Do Not Feed the Duck" sign.





# MAINTENANCE DELIVERY UPDATE

## Onetangi Sports Park - Tennis Shed and bore Pump house

The shed gets full sun. We had to replace some of the weatherboards so took the opportunity to refurbish the entire building and surrounding 3 x table sets.

**Before**



**After**



Sewage leak on dispersal field due to rats eating through the dripper lines. Biosecurity are checking that the baiting lines are being done by the volunteers.





# MAINTENANCE DELIVERY UPDATE

## Little Oneroa Toilets

Power outage on 27/12/2023 due to faulty UV filter tripping the switchboard. We had to disconnect the filter to keep toilets going over this busy time.





# MAINTENANCE DELIVERY UPDATE

Aaron Bay

Sea Turtle reported by member of the public to DoC.  
Programmed staff retrieved the turtle for DoC





# MAINTENANCE DELIVERY UPDATE

## Wi2 Oneroa Beach toilets

Pipe from woman's toilets to primary tank blocked on 31/12/2023. This resulted in sewage flooding into the female toilets. Our plumbing team unblocked.





# MAINTENANCE DELIVERY UPDATE

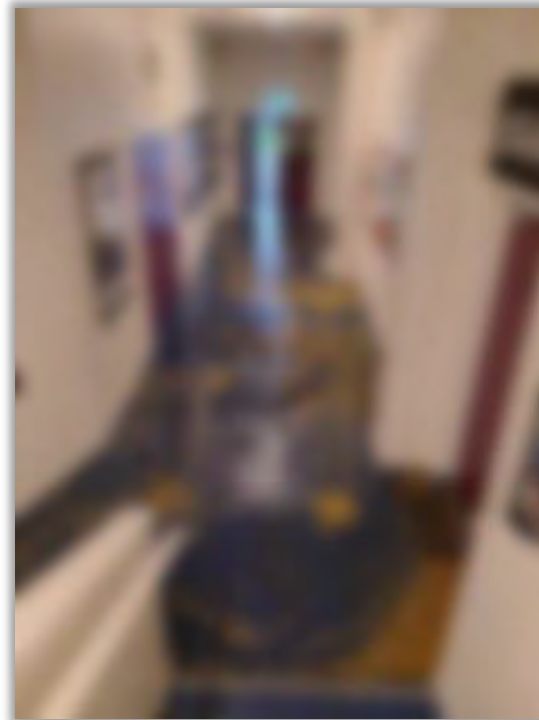
## Mary Wilson Reserve – installation of foreshore seat

We have completed the installation of a foreshore seat at Mary Wilson Reserve.



## Artworks

Lower toilets blocked and erupted on 31/12/2023. Our Programmed cleaning team arrived to the rescue with a packed Cinema and Indian restaurant to clean the building and remove sewage. The toilets were locked and portaloos supplied. The following week we got a specialist team from the city with a camera who discovered that the pipe to primary tank had dropped and kinked. We dug this up and fixed the blockage. This may require a complete wastewater system upgrade to improve the fall from the toilets to the tank.





# MAINTENANCE DELIVERY UPDATE

## Sustainability Centre

04/01/2024 someone smashed the front door at the Sustainability Centre. We have temporarily fixed with ply. Waiting for safety glass to be supplied. We have also installed a baby change table in the unisex toilets.





# MAINTENANCE DELIVERY UPDATE

## Wharf Road

Rubbish bins were hit by a vehicle/pushed over damaging the anchor points. The issue was resolved within a couple of hours by Programmed and the bins reinstated to the correct position.





# MAINTENANCE DELIVERY UPDATE

## Te Ara Hura

During routine inspections, we are replacing tin post signs.





# MAINTENANCE DELIVERY UPDATE

## Viewpoint above Matiatia on Nick Johnstone Drive

We replaced a seat at the viewpoint.





# MAINTENANCE DELIVERY UPDATE

MAKING  
GREAT PLACES  
AUCKLANDERS LOVE  
PARKS & COMMUNITY FACILITIES

Natzka Foreshore

We refurbish a table and benches.





# MAINTENANCE DELIVERY UPDATE

## Ranighoua Reserve – maintenance on entry to Reserve



## Tawaipareira Reserve Project Update

Works are close to completion at Tawaipareira Reserve. The skatepark remains open for public use but the carpark has been blocked off.

- Learn to ride paths, pump track installation and furniture installation have been completed.
- Basketball court hoops have been installed including the Iwi art courts pattern.
- Construction fencing is expected to be removed by 16<sup>th</sup> February 2024.
- An opening ceremony is being planned by the local board for February 2024.

Works to be completed:

- Shade sail installation – due end of Feb 2024
- Line marking and stencil painting – expected to be completed by 22 Feb 2024
- Vehicle crossing – scheduled for May 2024 subjected to funding available at the end of project
- Planting – scheduled for May 2024 during planting season





## Arboriculture maintenance 'Request for Service' (RFS)



### Kennedy Point Road, Waiheke Island, Auckland

Treescape removed a compromised tree, and a failed Acacia (Wattle) and undertook crown lifting of a Pohutukawa that was obstructing a resident's driveway preventing easy access.







## Arboriculture maintenance - Scheduled Park Work



### Species Specific Pruning - The Esplanade

General pruning undertaken of the Phoenix palms at The Esplanade, Oneroa.



## Arboriculture maintenance - Scheduled Park Work

### Park Pruning, Onetangi Sports Park (Rangihoua), Oneroa, Waiheke

Treescape carried out scheduled park maintenance.



## Arboriculture maintenance



Treescape removed a large Pine tree at Victoria Road South due to it dying and a section of land is being developed after being purchased the tree posed a risk to the new building but also to the contractors working onsite. As part of the building consent this area we be replanted by the property owner. Logwood was taken away by Treescape.



## Arboriculture maintenance – Scheduled Park/Street



### Ostend Road/Belgium Street, Waiheke Island, Auckland

Treescape carried out crown lifting of the Plane trees along the footpath along Belgium Street and around the seating area under the shade sails.





# ECOLOGICAL UPDATE

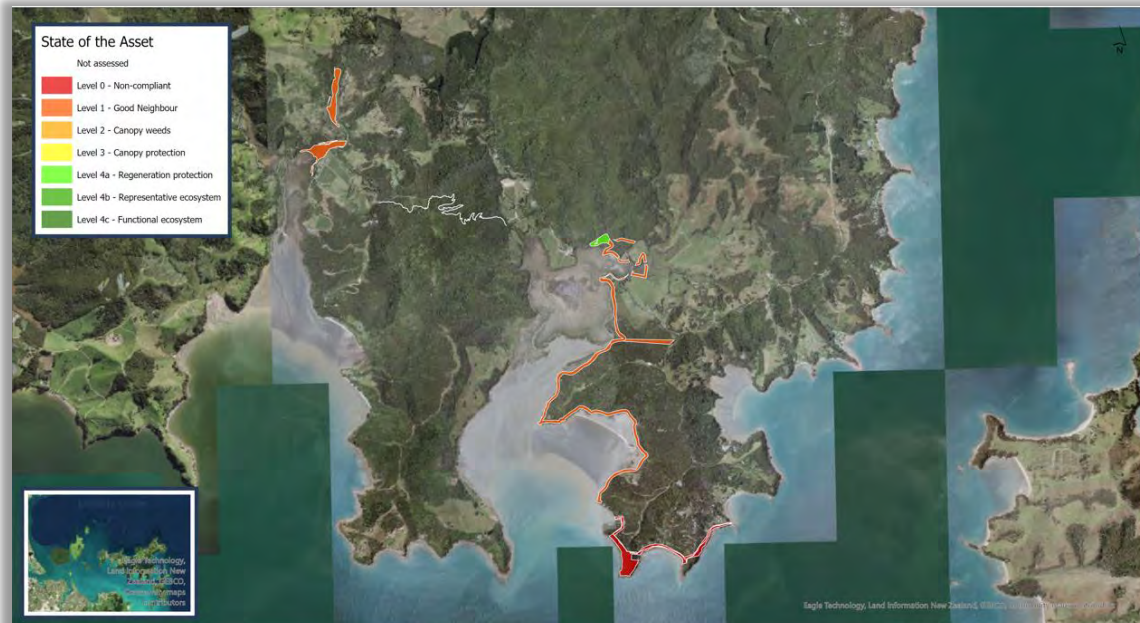
## 2022-2023 'state of the asset' baseline mapping completed

Within the Local Parks network, areas of higher ecological value are designated as “ecological polygons” and managed under specialized ecological contracts.

At the conclusion of the last financial year, an independent ‘state of the asset’ survey was conducted to assess the condition of assets. This survey was particularly significant as it coincided with the transition to a new supplier. The methodology employed in this assessment is closely linked to the specifications outlined in the new contract, thereby allowing for ongoing evaluation of progress.

Waiheke Island faces challenges due to its relatively large ecological area per head of population, which poses constraints within the available budget.

Considerable efforts have been dedicated to sites such as Rangihoa; however, some areas remain challenging. Species such as climbing asparagus, bushy asparagus, ginger, moth plant, rhamnus, and woolly nightshade are among those contributing to the challenges.





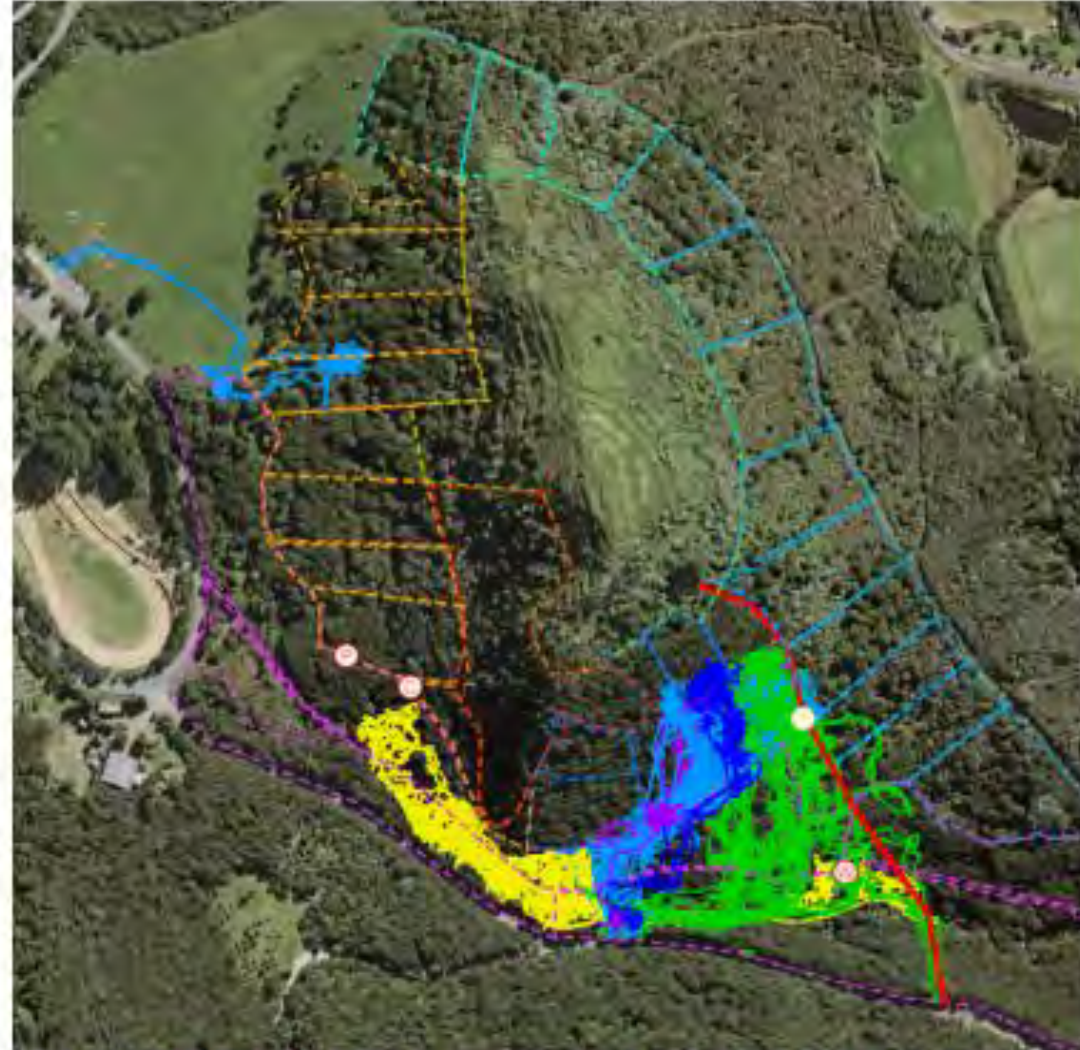
## Rangihoua

Rangihoua tihi and flanks is a regionally important archaeological site that is currently managed under the ecological contract.

NETR-funded initial control planned for this year was completed on Rangihoua in December and January. This control focused primarily on dense infestations of climbing asparagus. Woolly nightshade is also an issue in this area.

This is a continuation of the NETR-funded initial control completed in the western orange 'jungle boxes' (map to right) on this site last year.

Funding permitting, initial control will continue into the light blue south eastern 'jungle boxes' next financial year.



Track colour code: **Week 1**, **Week 2**, **Week 3**, **Week 4**, **Week 5 (31/01/2024)**

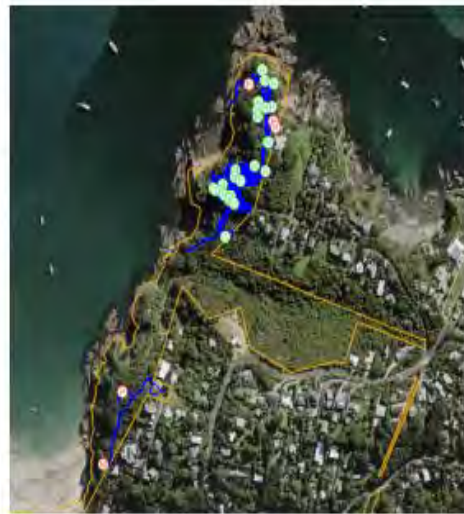


## December and January projects

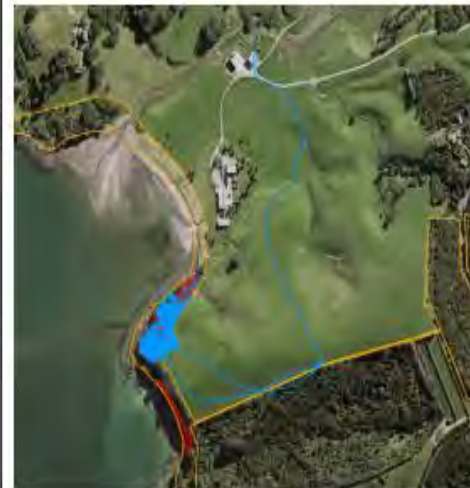
A selection of ecological projects was completed in December and January.



*In January 2024, we spent one day in Victoria Reserve spraying previously released Climbing asparagus.*



*In December 2023, we spent one day in Newton Reserve controlling dense infestations of Mothplant, Rhamnus, and Woolly nightshade as well as some Wild ginger.*



*In December, we completed the final stage of initial control of Mothplant, Rhamnus and Woolly Nightshade on the Esplanade Reserve site to the SE of Church Bay Farm. The team made good use of the 1000 litres of water provided by the farm manager while abiding by the health and safety standards of a working farm.*



*Elsewhere in Church Bay Esplanade Reserve in December, we fulfilled a RFS response by controlling Mothplant which threatened to overwhelm a Waiheke Resources Trust planting site.*

## Integration with other ecological works on Waiheke

Our current Waiheke Island Supplier, Free The Tree, also does work on some related projects. This can lead to efficiencies and good integration with different Council projects.

One example is integration of Local Parks ecological works with the Environmental Services “good neighbour” Regional Pest Management Plan work. Work in two sites is summarised to the right.

A second example is a connection made with Newton Reserve through the new Waiheke Community Ranger, Teresa Davenport. Free The Tree notes, “Newton Reserve (RFS No: 8110637022). In December, I participated in a fulfilling day at Newton Reserve in response to a RFS from Pam Oliver, the newly elected Guardian (Kaitiaki) of Friends of Newton Reserve, and Teresa Davenport, our recently assigned Community Ranger. Teresa is a most welcome reinforcement to Waiheke Island’s ecological efforts. With her oversight and guidance, we look forward to supporting community groups.”



January 2024. Owghanake Matiatia Walkway Reserve (left) and Owghanake Reserve (right). The team split a day between both reserves. The intent of both efforts was to demonstrate Good Neighbour practice to landowners while completing follow up control.

(Left) The Mothplant points (red means uncontrolled) lie on a Delamore Drive property. I include the points here because the owner consistently relies on FTT to control invasive species. FTT thereby facilitates a two-way “good neighbour” relationship between private and public lands.

With the landowner’s consent, we also use this property as a pilot study to persuade and enthuse other property owners to engage in biodiversity regeneration programmes.

We show that an annual investment yields a year-on-year decrease in costs until we achieve a stable level of annual maintenance.

For example, over three years, we’ve consistently reduced the owner’s year-on-year costs by about 25% per year. The owner recognizes the initial high upfront cost for control, understanding it diminishes with ongoing follow-up measures.

(Right) In this screenshot, we once again cleared the walkway between two properties scheduled for ES-funded Mothplant Compliance inspections. Both properties carry significant burdens of Mothplant. This is an example of how two separate projects can reinforce each other. In other words, our Authorised Persons and Natasha Beletzky can say with integrity to the landowners, “Council has done its job, now you need to do yours.”

**Note:** In FY23, we needed two days to control all Good Neighbour species on this site. In FY24, we needed only ½ a day. As a mini-pilot study, this result is excellent news for Auckland Council.





# NOTIFICATIONS

## Land-owner approvals

### Land Advisory

Land-owner applications received are assessed by Land Use Advisory and reviewed by Community Facilities staff. The board will be contacted for feedback in due course.

There were two landowner approval application **received** in the Waiheke Local Board area during December 2023 and January 2024.

- An application by the Onetangi Residents Association to undertake weed control and replanting in Onetangi Reserve.
- An application by the Kaitiaki of Newton Reserve Group to undertake Weed removal and replanting Newton Reserve, Oneroa.

There were no landowner approval applications **approved** in the Waiheke Local Board area during December 2023 and January 2024.




# WORK PROGRAMME UPDATE

Changes to agreed FY24 Project Delivery Programme

## Minor Change

Projects affected by minor change over the previous month:

ID REF	Activity Name	Change
	Nothing to report	

## Substantial Change

Projects affected subject to substantial change:

ID REF	Activity Name	Change
	Nothing to report	



# PROJECT DELIVERY STATUS

## Project Delivery

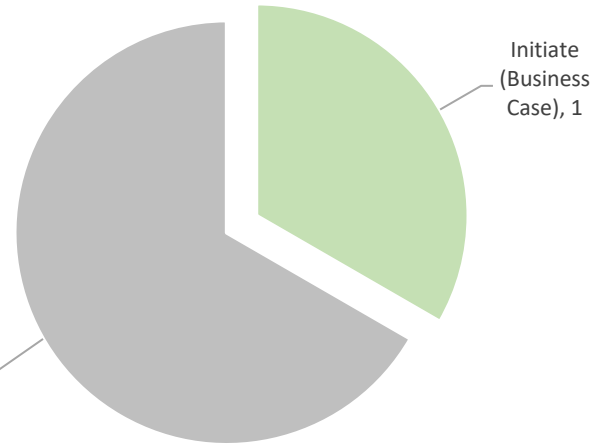
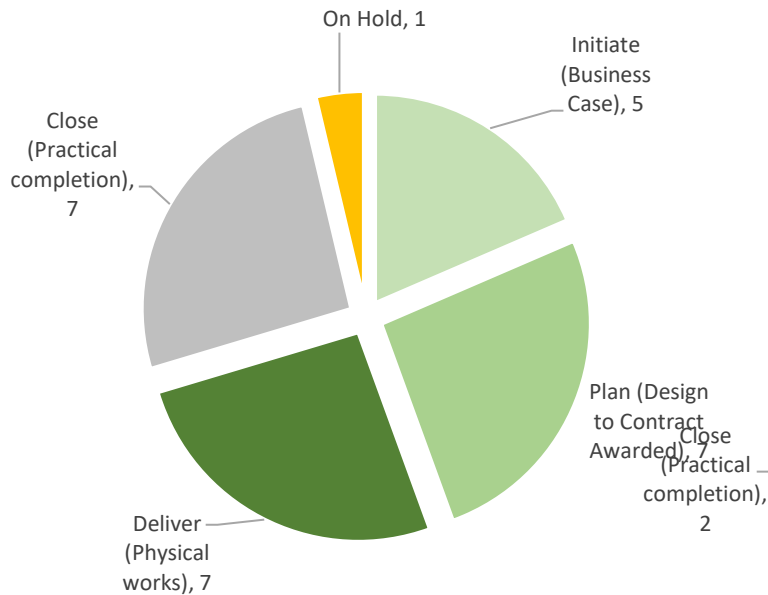
## Notifications - Next Month

Waiheke Local Board - Project Status

Waiheke Local Board - Project Status

Total Number of Projects - 27

Total Number of LDI Projects - 3



**OWNER:** Shane Hogg

I am pleased to announce that Jenean De Bruin will be joining our team as our new Programme Manager. Jenean is joining us from the Howick and Maungakiekie-Tāmaki Local Board areas where she was a Project Manager for the past 3 years.

**TIMELINE:** 18<sup>th</sup> December 2023



# PROJECT DELIVERY STATUS

			Initiate	Preliminary design	Detailed Design	Tender Process	Construction	Defects
			2023/2024 - Current year					
Activity Name	RAG	Local Board Commentary	Timeline		Q1	Q2	Q3	Q4
Albert Crescent to Wharf Road - renew walkway and retaining wall	Green - On Track	Project complete November 2022.	Baseline					
			Forecast/Actual					
Artworks and Community Centre - Comprehensive Renewal	Green - On Track	Current status: Professional Services procurement nearly complete Next steps: Start Building consent documentation	Baseline					
			Forecast/Actual					
Carpark and Rooding - Renewals - Waiheke	Green - On Track	Current status: Tender process underway. Evaluation process started. Next Steps: Award physical works contract.	Baseline					
			Forecast/Actual					
Catherine Mitchell Cultural Society building - interior and exterior renewals	Green - On Track	Project completed September 2023	Baseline					
			Forecast/Actual					
Citizens Advice Bureau - interior and exterior renewals - Waiheke	Green - On Track	Current status: Detailed design completed for structure remediation and building consent has been lodged. Next steps: Proceed with tender and physical works are expected to commence in March 2024.	Baseline					
			Forecast/Actual					
Golf Clubhouse - interior and exterior renewals - Onetangi Sports Park	Green - On Track	Current status: A site visit has taken place involving stakeholders and the engineer to establish the project scope. Next steps: Proceed to assign the engineering work and advance the design phase accordingly.	Baseline					
			Forecast/Actual					
Harbourmaster Building – renew minor assets	Green - On Track	Current status: Physical works underway. Next steps: Physical works to be completed by the end of June 2023.	Baseline					
			Forecast/Actual					
Hekerua Bay Reserve - renew path and install retaining wall	Amber - At Risk	Current status: Design works for the retaining wall are completed. Meet with stakeholders and discuss retaining wall alignment and current encroachment of the carpark. Retaining wall footings are being re-designed, access will be required from Neighbours land to install piles for retaining wall. Next steps: Discuss options for footings and get permission from the Neighbour to allow access. Building consent documentation is being prepared for lodgement. Site visit has been arranged with Neighbour to discuss options	Baseline					
			Forecast/Actual					
LDI minor capex fund FY2022/2023 - Waiheke	Green - On Track	Project completed October 2023.	Baseline					
			Forecast/Actual					
Little Oneroa Reserve - renew play space, stairs and pathways	Green - On Track	Project completed	Baseline					
			Forecast/Actual					
Minor Capital works - Waiheke	Green - On Track	Current status: This budget is for the delivery of small works through the Facility Managers and items will be identified over the course of the financial year. Next steps: Delivery of minor capital works items.	Baseline					
			Forecast/Actual					



# PROJECT DELIVERY STATUS

				Initiate	Preliminary design	Detailed Design	Tender Process	Construction	Defects
Activity Name		RAG	Local Board Commentary	Timeline		2023/2024 - Current year			
				Q1	Q2	Q3	Q4		
Onetangi Sports Park - general renewals	Green - On Track	Current status: Resource consent was obtained for installing an additional relocatable style changing room with toilets and utility connections. Design works progressing for the foundation and utility connection for the changing room. Next steps: Lodge building consent along and place order for a second changing room.	Baseline	[Gantt chart showing project progress from Q1 to Q3]					
			Forecast/Actual						
Open space furniture, fixings, equipment, BBQs and signage - renew - 2023/2024 - Waiheke	Green - On Track	Current status: Investigation and scoping of project options are ongoing in collaboration with the contractor and operations staff. Next steps: Finalising project scoping and initiating procurement for physical works.	Baseline	[Gantt chart showing project progress from Q1 to Q3]					
			Forecast/Actual						
Open space lighting - sports and amenity lighting - renew - Waiheke	Green - On Track	Project completed October 2023.	Baseline	[Gantt chart showing project completion in Q1]					
			Forecast/Actual						
Open space toilets - develop and renew stage two - Waiheke	Green - On Track	Current status: The physical works at Oneroa Village toilet have been completed. Investigation is underway at Omiha Beach toilet which has been closed due to recent slips. Next steps: Continue with investigation and design for Omiha Beach toilet and provide an update to stakeholders by February 2024.	Baseline	[Gantt chart showing project progress from Q1 to Q3]					
			Forecast/Actual						
Parks LDI quick response fund - Waiheke	Green - On Track	Project completed October 2023.	Baseline	[Gantt chart showing project completion in Q1]					
			Forecast/Actual						
Rakino Hall relocation - Rakino Island	Green - On Track	Current status: the site investigations and initial planning assessment are under way. Next steps: Concept options and stakeholder consultation.	Baseline	[Gantt chart showing project progress from Q1 to Q3]					
			Forecast/Actual						
Tawaipareira Reserve stage two - replacement of play space, bike track, new flying fox	Green - On Track	Current status: Physical works have commenced onsite from October 2023. Next steps: Monitor physical works expected to be completed by February 2024.	Baseline	[Gantt chart showing project progress from Q1 to Q3]					
			Forecast/Actual						
Te Whau Esplanade Reserve - stabilise Hitapa track	Amber - At Risk	Current status: This project is on hold. A walkover of the site with internal geotechnical specialists in October 2019 confirmed there are limited works required relating to slip repairs. This track renewal will be bundled with the track renewal programme, enabling a renewal of the walking track in its entirety. The project remains on hold until the landslips have been repaired. Resource consent has been extended to allow physical works to be completed in future years. Next steps: An existing design for the upgrade is being reviewed and cost. Once the slips have been remediated, work can be planned with the Waiheke Local Board.	Baseline	[Gantt chart showing project on hold]					
			Forecast/Actual						



# PROJECT DELIVERY STATUS

				Initiate	Preliminary design	Detailed Design	Tender Process	Construction	Defects
				2023/2024 - Current year					
Activity Name	RAG	Local Board Commentary	Timeline	Q1	Q2	Q3	Q4		
Tracks and pathways - renew - 2021/2022+ - Waiheke	Green - On Track	<p>Current status:</p> <p>Priority 4: Matiatia Owhanake (Matiatia Wharf to Owhanake Bay) - Track completed.</p> <p>Priority 5: Te Aroha Walkway - Resource consent lodged and awaiting decision. Reprioritising projects with the local board.</p> <p>Priority 6: Glenbrook Reserve (Okoka Road through Glenbrook Reserve to Glenbrook Road - Resource consent granted. Physical works tender is currently being procured with the successful supplier. Reprioritising projects with the local board.</p> <p>Priority 11: Matiatia to Owhanake sidetrack (The entrance is opposite the car rental at Matiatia and traverses past the car garaging business to Delamore Drive) - Resource consent granted. Physical works tender is currently being procured with the successful supplier. Reprioritising projects with the local board.</p> <p>Priority 13: Trig Hill to Awaawaroa Bay- Resource consent granted. Physical works tender is currently being procured with the successful supplier. Reprioritising projects with the local board.</p> <p>Priority 14: Te Wharau Bay - Adjacent to the toilet - Resource consent lodged awaiting decision. Reprioritising projects with the local board.</p> <p>Priority 15: Te Wharau Bay - Southern Bay access - Resource consent lodged awaiting decision. Reprioritising projects with the local board.</p> <p>Priority 17: Park Point (From Church Bay Farm along the coast to Te Wharau Bay - Resource consent lodged awaiting a decision. Reprioritising projects with the local board.</p>	Baseline						
		<p>Next steps:</p> <p>Priority 2: Matiatia Owhanake (Matiatia Wharf to Owhanake Bay) - continue to build track during July.</p> <p>Priority 5: Te Aroha Walkway - Procuring physical works and award to the successful tenderer. Reprioritising projects with the local board.</p> <p>Priority 6: Glenbrook Reserve (Okoka Road through Glenbrook Reserve to Glenbrook Road - next to Petra's House.) - Reprioritising projects with the local board.</p> <p>Priority 11: Matiatia to Owhanake sidetrack (The entrance is opposite the car rental at Matiatia and traverses past the car garaging business to Delamore Drive) - Reprioritising projects with the local board.</p> <p>Priority 13: Trig Hill to Awaawaroa Bay-Reprioritising projects with the local board.</p> <p>Priority 14: Te Wharau Bay - Adjacent to toilet. Reprioritising projects with the local board.</p> <p>Priority 15: Te Wharau Bay - Southern Bay access. Reprioritising projects with the local board.</p> <p>Priority 17: Park Point (From Church Bay Farm along the coast to Te Wharau Bay). Reprioritising projects with the local board.</p>							
			Forecast/Actual						



# PROJECT DELIVERY STATUS

			Initiate	Preliminary design	Detailed Design	Tender Process	Construction	Defects		
			2023/2024 - Current year							
Activity Name	RAG	Local Board Commentary	Timeline				Q1	Q2	Q3	Q4
Tracks and pathways - renew - 2022/2023 - Waiheke	Green - On Track	<p>Current status: Priority 4 physical works completed in August 2023. The project has been approved, scoping of tracks is underway, assessing the condition on the following priority: Priority 8: Wharetana Bay (Rothschild Terrace to the Bay). Prestart meetings to be held prior to Christmas, with Physical works being planned for January 2024. Priority 9: Omiha Beach Reserve (Beach to Upland Road, Rocky Bay). Prestart meetings to be held prior to Christmas, with Physical works being planned for January 2024. Priority 10: Island Bay (Fossil Bay to Owhanake Bay). Prestart meetings to be held prior to Christmas, with Physical works being planned for January 2024. Priority 12: Church Bay from Matiatia to Church Bay Road (From Matiatia Bay, around the coast, past Church Bay and up to Church Bay Road). Prestart meetings to be held prior to Christmas, with Physical works being planned for January 2024. Next steps: Complete physical works and close out projects.</p>	Baseline							
			Forecast/Actual							
Tracks and pathways - renew - 2023/2024 - Waiheke	Green - On Track	<p>Current status: Designs and consents have been completed, the next step is to reprioritise with the Waiheke Local Board. Next steps: Once priorities have been agreed upon, a physical works programme can be created.</p>	Baseline							
			Forecast/Actual							
Waiheke - remediate 2023 storm and cyclone damaged assets	Green - On Track	<p>Current status: Arrangements are being made for a site visit involving stakeholders to initiate the scoping process. Next steps: Coordinate a site visit with the engineer and proceed to award the design contract.</p>	Baseline							
			Forecast/Actual							
Waiheke - Urban Forest (Ngahere) Strategy - Growing Phase	Green - On Track	<p>Current status: The urban forest specialist is scheduled to engage in consultations with the Waiheke Local Board regarding recommendations for the action plan. Next steps: The next steps involve the identification of planting locations on a map and the initiation of procurement for physical works.</p>	Baseline							
			Forecast/Actual							
Waiheke Community Art gallery - replacement art gallery floor	Green - On Track	Project completed September 2023.	Baseline							
			Forecast/Actual							
Waiheke Library - refurbish building	Green - On Track	<p>Current status: Pricing for physical works currently underway. Next steps: Complete procurement of physical works contractor.</p>	Baseline							
			Forecast/Actual							
Walkways and paths - Renewal - Waiheke	Green - On Track	<p>Current status: The project is currently undergoing the scoping phase in collaboration with an engineer and various stakeholders. Next steps: The engineer will advance to the concept design phase as part of the project's progression.</p>	Baseline							
			Forecast/Actual							

# Dinghies & Kayaks Removal Update

Waiheke Local Board

March 2024





# Dinghies and Kayaks Removal

- Campaign to target Palm Beach and Matapana Reserves
- April 2024 timeline
- Public notice and council communication
  - Local board Facebook post
  - Customer service and iKnow content
  - Poster/Signage
  - Media postings
- Non-seaworthy water-craft removal



# Dinghies and kayaks at Palm Beach – February 2024



# Kayaks at Matapana Reserve – February 2024



# Palm Beach and Matapana Reserves Campaign

## February 2024

- Staff have photographed both sites for a baseline assessment of unauthorised storage of dinghies and kayaks.

## 25 March 2024

- Local Board Facebook page to signal council's intention to remove boats from the beach reserves by end of April 2024, following Easter, school and the Anzac holidays.
- Liaise with Gulf News to help publicise the campaign

## Early to Mid April 2024

- Facebook update post informing the date that boats would be stickered
- Staff to photograph and sticker vessels on both beach reserves

## Mid to Late April

- Staff to visit sites and monitor the removal of boats

## End of April

- Staff to arrange removal of remaining vessels, which is dependent on the size and quantity of vessels that remain.



# iKnow content

[Home](#) > [Parks, recreation and community venues](#) > [Beaches and coastal areas](#) > [Removing Beachside dinghies and kayaks Waiheke campaign](#)

## Removing Beachside dinghies and kayaks Waiheke campaign

★ ★ ★ ★ ★ 0 humans

Last modified by Melissa Tuala on 20/02/2023

### General

#### CF01

Waiheke Local Board are running a campaign to remove dinghies and kayaks at beaches on Waiheke.

Follow the [Waiheke Local Board's Facebook page](#) for updates on dates and locations.

#### ✉ [December comms](#)

Although it has been common practice for people to store their dinghies and kayaks on Waiheke beaches the practice is not authorised and is in violation of nuisance bylaws.

- Once stickered a boat will need to be removed within the 14-day period.
- Sites will be selected throughout summer and the public will be advised of each site prior to stickering.
  - Onetangi Beach will be the site targeted in January.
- Council do not intend to store any seaworthy vessels but if these vessels are chained to trees or structures, the chains will be removed following the 14-day period.
- Watercraft that are deemed non-seaworthy and considered waste will be removed by contractors.
- Prior to the removal of any non-seaworthy dinghies and kayaks, photos will be taken of these vessels.
- There is the possibility that dinghies and kayaks may be stolen, so council is attempting to be cautious with site selection and public notification.
  - However, theft of private property is a matter for the police.

Private property should not be stored on public land, and council wants to ensure that beaches and shorelines are accessible to all.



# Council communications

## **Our beaches are for everyone to enjoy**

Thanks to everyone who removed kayaks and dinghies from Enclosure Bay in early 2022. There is now more space and shade on the beach for locals and visitors to enjoy.

Now it's time for the rest of the motu to follow suit and get our beaches summer-ready. So, if you own a kayak, dinghy, or any other vessel stored on public land, please take it home. If you can't move it yourself, ask a friend or neighbour for help.

As well as freeing up our beaches for people to enjoy, there are plenty of great reasons to take your vessel home.

- **They are a hazard in rough weather**  
King tides and storms can move and damage vessels and create harmful debris. This has a negative impact on the vessels, the environment and council resources and makes the beach unusable.
- **The trees suffer**  
In some beaches and bays trees, vessels chained to trees have damaged their health and growth potential.
- **Security of your property**  
Leaving property on public land can be an open invitation to thieves. To guarantee the safety of your vessel, keep it secured on private property.
- **Deterioration of your property**  
Even ordinary weather conditions will damage vessels over time. Exposure to sea salt, sand, wind, and Aotearoa's harsh sun all take their toll. Take your vessel home to keep it water ready for longer.

The public open space along the shoreline is not intended for storage of private property, and the current practice of leaving these vessels on site is an infringement of the Public Safety and Nuisance Bylaws 2013.

Starting with Onetangi Beach in January 2023, boats and other water vessels will be stickered to alert a 14-day notice period. Following the notice period, any stickered vessels that remain will be unchained, removed and potentially disposed of.

If you do think that your boat has been stolen – contact the police.

The campaign to remove dinghies and kayaks from beaches across Waiheke will continue throughout the summer. Follow the [Waiheke Local Board's Facebook page](#) for updates on dates and locations.

For more information, please call 09 301 0101.



# Risks to mitigate during the campaign

- The campaign to remove dinghies and kayaks fail to reach the owners of these vessels.
  - Staff to ensure that the public is made aware of the campaign as reasonably as possible, including social media posts, posters, contact with news media and customer service updates.
- The risk that the vessels may be stolen.
  - The risk that private property may be stolen remains a risk of the individual owners.
- At the end of the campaign, there may remain a number of non-seaworthy vessels that may prove challenging for council staff to have removed.
  - Staff to monitor the sites throughout the month of April to assess what vessels may remain towards the end of campaign. This will enable a plan to work with Waste Solutions if required for the removal of non-seaworthy vessels.



23 February 2023

Thieves appear to be targeting kayaks on Waiheke during an Auckland Council programme to stop people leaving the craft cluttering up public beaches.

Public  
confusion  
regarding  
campaign  
deadline

After a deadline for owners to remove their kayaks has been publicised, council staff visit the targeted beach and put 14-day warning stickers on any they see. When the deadline comes, the council collects and takes away any kayaks still left on the beach. However, several owners have found their kayaks had disappeared when they went to retrieve them well before the deadline. They include Alex Blee, who noticed his kayak had gone over a week ago, and approached Gulf News after the council couldn't tell him what had happened to it.

Alex says he hadn't seen a warning sticker on his kayak before it went missing, but the council had given notice it would soon remove any kayaks left on the beach and he figured the council took it. But when he asked council staff, they said they had not taken any kayaks from Onetangi yet. So he reported the apparent theft to the police.

Michael Somerville also had his kayak stolen from Onetangi. He found it was missing on 28 January when he went to remove it two days after hearing about the council collection. He says he's kept and regularly used kayaks at Onetangi for nearly a decade and hasn't had a problem or even heard of that many kayak thefts until the recent spree.





## **Direction setting and next steps**

- Staff to proceed with the campaign at the direction of the local board, including confirmation of the timeline for the campaign.
- Staff to announce next site(s) via Facebook and the news media to alert the public on the timing for boats to be stickered.
- Staff to provide updated information to iKnow and council customer services.

