

# Waitākere Ranges Local Board Workshop Record

Workshop record of the Waitākere Ranges Local Board held at the Waitākere Ranges Local Board office, 39 Glenmall Place, Glen Eden, Auckland on Thursday, 16 March 2023, commencing at 9.30am.

## PRESENT

**Chairperson:** Greg Presland  
**Members:** Michelle Clayton  
Mark Allen  
Liz Manley  
Linda Potauaine

**Apologies:** Sandra Coney  
**Also present:** Adam Milina, Darshita Shah, Brett Lane, Natasha Yapp and Nataly Anchicoque

Workshop Item	Summary of Discussions
Parks and Community Facilities monthly update Greer Clark, Manager Area Operations 9.30am-10.35am	Parks and Community Facilities staff provided the Board with an update on the current work being carried out including the response to January and February weather events.
2023/2024 Waitākere Ranges Grants Programme Review Vincent Marshall, Grants Advisor 10.35am- 11.35am	Staff led discussion on the Waitākere Ranges grants programme for 2023/2024 to help the Board resolve in time for the next financial year.
Play advocacy for local boards Thomas Dixon, Parks and Places Specialist Jacquelyn Collins, Play Advocacy Advisor 11.53am - 12.42pm	Board members briefed on opportunities for play advocacy and how this can support local board play outcomes.
Community investment options for local board plans Confidential Item Jonathan Hope, Principal Integration Specialist	Board members provided with an overview on how community services are delivered in order to inform consultation material for local board plans.

Gemma Kaldesic, Integration Specialist Tracey Williams, Service Programmes Lead Giles Dodson, Senior Advisor Plans 1.15pm - 2.35pm	
---	--

The workshop concluded at 2.35pm



# WAITĀKERE RANGES

## Local Board Report – February 2023

**MAKING  
GREAT PLACES  
AUCKLANDERS LOVE**  
PARKS & COMMUNITY FACILITIES



Area Manager update by Greer Clark

Te Henga Bethells Beach - Post Cyclone



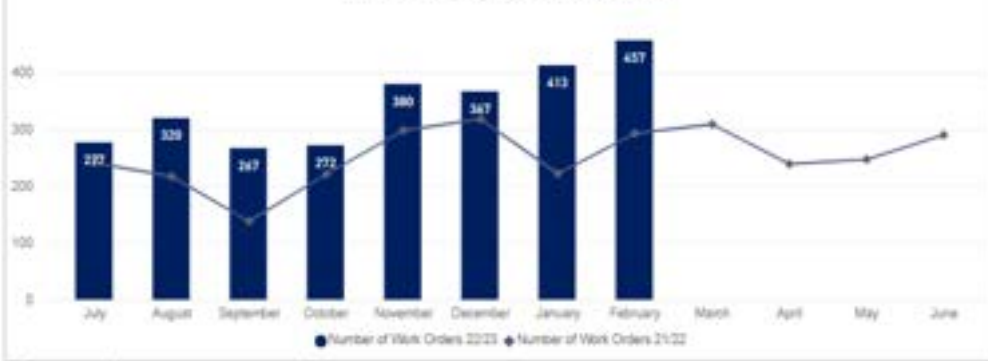
# PERFORMANCE REPORTING

## Audit Results and Request for Service

### Request for Service Received

Total raised for FY22/23 YTD **2753**

Waitākere Ranges RFS Breakdown



\*Only includes RFS that have resulted in a Work Order for action.

Breakdown of Top 5 Request for Service for February

Service Name	#Received
Tree Maintenance - General	188
Structure Maintenance and Repairs	30
Carpentry Maintenance Service	22
Loose Litter Collection	22
Plumbing Maintenance Service	17

Breakdown of Top 5 Request for Service FY22/23 YTD

Service Name	#Received
Tree Maintenance - General	475
Structure Maintenance and Repairs	326
Plumbing Maintenance Service	221
Carpentry Maintenance Service	177
Loose Litter Collection	171

### COMMENTARY

Understandably Tree Maintenance continues to be the highest cause for Requests for Service for February. This is largely driven by the impact of Cyclone Gabrielle and the subsequent clean up efforts.

This is followed by both Structure Maintenance and Repairs and Plumbing Maintenance - our contractors have certainly been busy out in the field in an attempt to keep our facilities secure and dry!

### Audit Results

Waitākere Ranges Full Facilities Audits



The highlights and lowlights of audits undertaken FY22/23 YTD are:

Highlights YTD
Sportsfields
Response WO
Litter
Building Maintenance
Building Cleaning

Lowlights YTD
Water Feature
Turf
Tracks (incl. Structures)
Hard Surfaces & Paths
Gardens & Plants

### COMMENTARY

Due to the clean up efforts required for February, our contractors were issued an exemption from audits for the entire month to enable them to focus on the initial clean up.

01 March will see a return to 'Business As Usual' and audits will recommence.



# MAINTENANCE DELIVERY UPDATE

Corrective, preventive, risk-based and condition-based maintenance

MAKING  
GREAT PLACES  
AUCKLANDERS LOVE  
PARKS & COMMUNITY FACILITIES

## Titirangi Community House



## Arapito Plantation Reserve – Kauri Dieback Path Installation



# MAINTENANCE DELIVERY UPDATE

Corrective, preventive, risk-based and condition-based maintenance

MAKING  
GREAT PLACES  
AUCKLANDERS LOVE  
PARKS & COMMUNITY FACILITIES

## Cyclone Gabrielle

February 2023 brought us the worst cyclone seen in New Zealand since Cyclone Bola in 1988. Cyclone Gabrielle hit our shores on February 13 and caused an immeasurable amount of damage not only across our region but also across the North Island. A number of our coastal communities have borne the brunt and suffered significant slips and damage. The impact and clean up of this weather event will be felt for a long time to come.





# MAINTENANCE DELIVERY UPDATE

Corrective, preventive, risk-based and condition-based maintenance

MAKING  
GREAT PLACES  
AUCKLANDERS LOVE  
PARKS & COMMUNITY FACILITIES

## Cyclone Gabrielle - continued





# ARBORICULTURE UPDATE

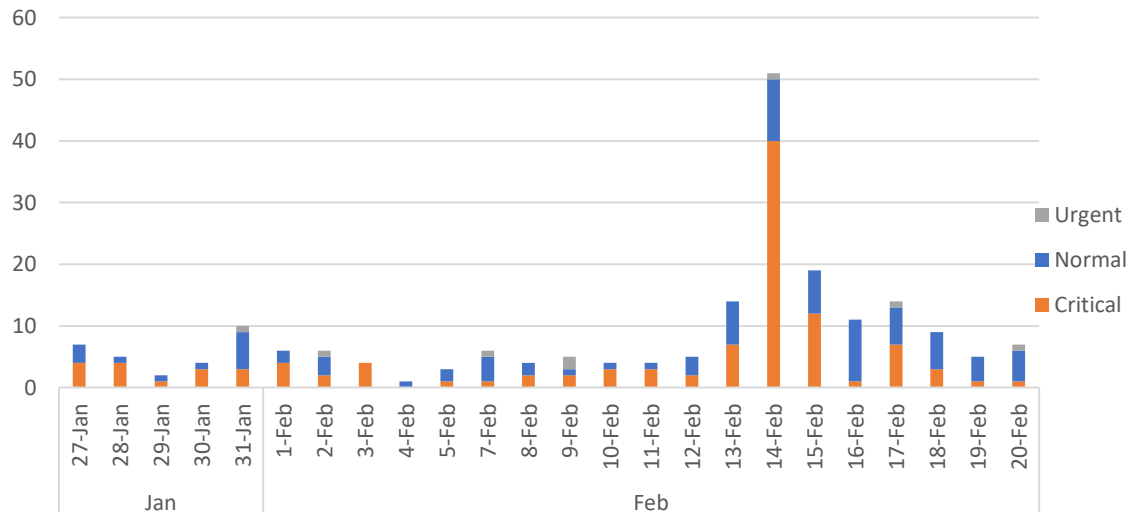
The cultivation of trees and shrubs

## A look at Waitākere after the January and February weather events

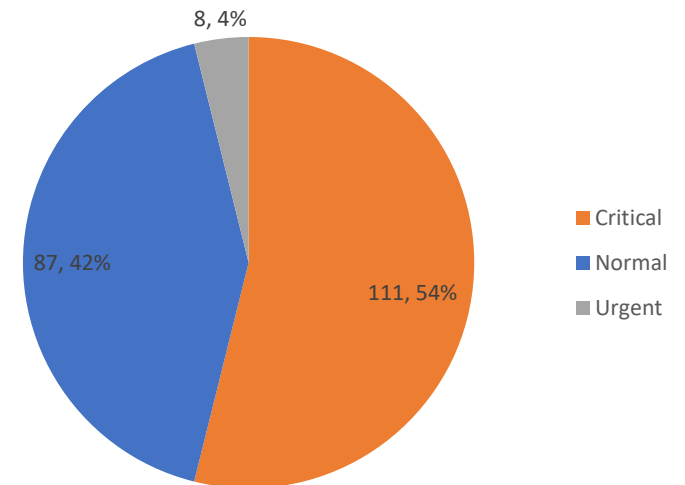
With the initial inundation from January's down pour setting the stage for one of Auckland's worst cyclones, Auckland's trees were set for a difficult time. While this initial weather event did not seem to be much of an issue for trees, it got the ground quite wet and primed for issues with the coming cyclone Gabrielle.

A typical month would have roughly a proportion of about 28% of tree jobs being raised as critical. The period from the 27<sup>th</sup> of January through to 20<sup>th</sup> of February, this increased to 54%. With the worst point being 14<sup>th</sup> of Feb having eighteen jobs created and 78% of those being critical. 20<sup>th</sup> February had an elevated RFS rate since people went back to work however this tapered off quickly. A side note about urgent jobs, these are raised internally and not by the public.

Tree related RFS per day (General Arb, Powerlines contracts)  
January Flooding through to February Cyclone Gabrielle



Proportion of RFS raised by status





# ARBORICULTURE UPDATE

The cultivation of trees and shrubs

## A look at Waitākere after the January and February weather events

To combat this catastrophic situation created by cyclone Gabrielle Treescape undertook some emergency measures. They moved personnel to Auckland from other parts of New Zealand that were less hit, along with engaging other very experience contractors to take some of the burden.

Job completion has been steady with critical jobs having been looked at though many still need to be completed. Currently their work force is split between assessing then completing new jobs and completing older jobs. This should help them to stay on top of new RFS jobs being created while still undertaking these older jobs. One major issue with a backlog is it getting topped up by new work. With this the overall dissatisfaction to the public should be minimised.

While there is optimism to share, the road ahead is still quite long. Business as usual will not return for many months.



Atkinson Road



Takahe Road

# ECOLOGICAL UPDATE

## Plants, animals and their environment

### Ecological maintenance

Work this month focused on Kay Road Balefill, Laingholm Scenic Reserve, Waikumete Cemetery bush areas, Don Buck Prim Recreation Reserve, Te Henga Park and Wekatahi Reserve.

Species targeted in 'forest' areas include woolly nightshade, Chinese privet, tree privet, ginger, climbing asparagus, gorse, Bolivian fuchsia, jasmine, Japanese honeysuckle, tuber ladder fern.

In 'gumland' areas (e.g., large areas of Waikumete Cemetery), prickly hakea (see photo, seed pods in insert photo) was a key target. Unfortunately, hakea is not in the contract specification for areas defined as 'forest'.

Following inclement weather, work has been delayed in areas affected by slips and road closures. Large fallen trees and minor slips / damaged structures (e.g., bridges) is slowing crew access through many areas.





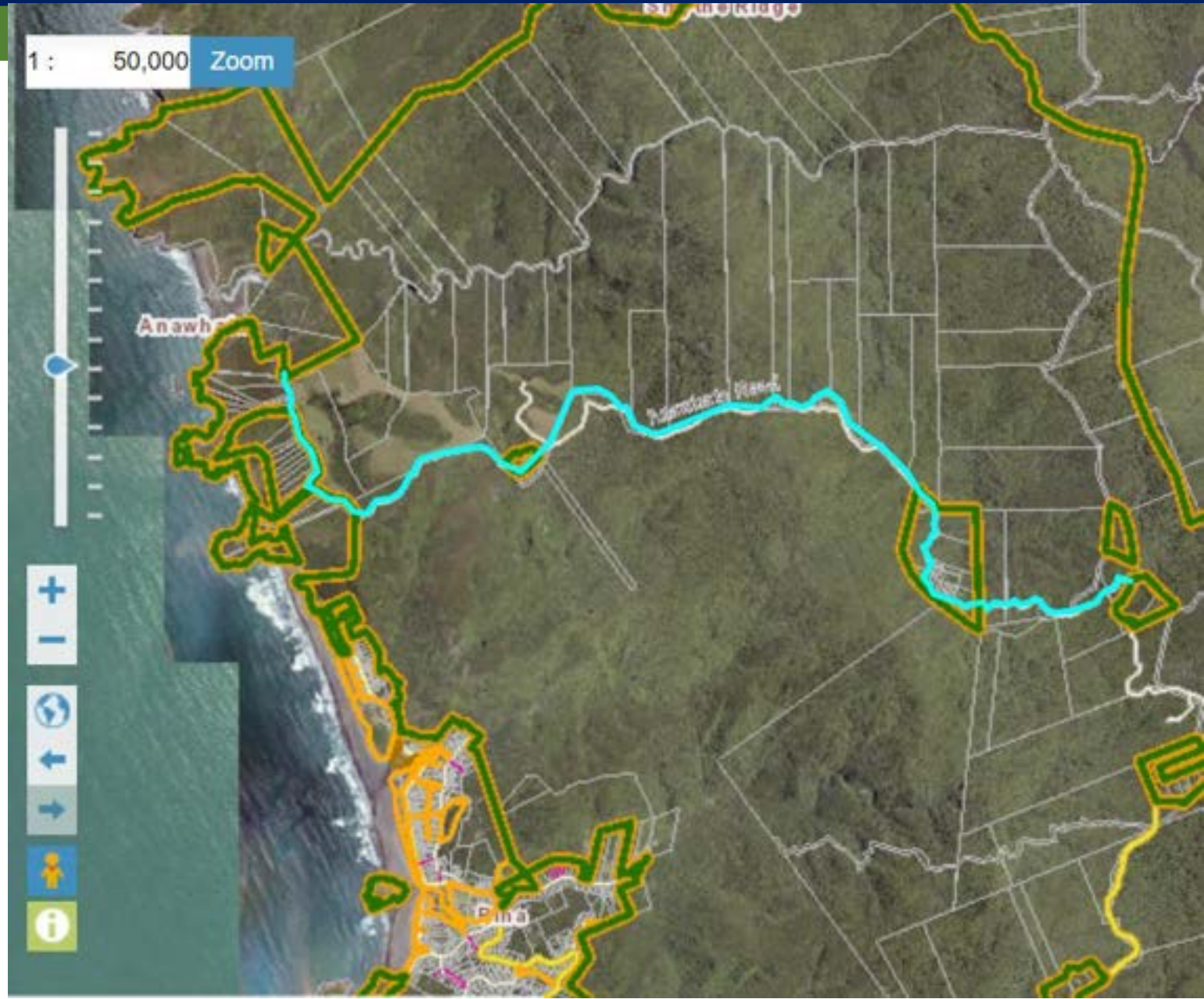
# ECOLOGICAL UPDATE

## Plants, animals and their environment

### Roadside weeds

Weed control work in the Waitakere Ranges Heritage Area Act roadside corridor to ensure compliance with the RPMP buffer rules commenced on Anawhata Road. Low densities of moth plant and Formosa lily were controlled. Moderate to high densities of gorse and some other target species were controlled in areas.

A longer-term specialist maintenance contract, to align with P27, will be procured, depending on ongoing availability of NETR budget.





# ECOLOGICAL UPDATE

## Plants, animals and their environment

### Encroachment

A fenced off area in Taumatarea Esplanade Reserve leading to a boat shed in the coastal marine area was identified during a routine audit. This encroachment precludes access to the reserve by the public, contractors, and non-warranted staff - including ability to control target weed species within the reserve to comply with the RPMP. Compliance (and Coastal Consents) were advised.





# ECOLOGICAL UPDATE

## Plants, animals and their environment

### Possible dump site

Three possible illegal dump sites were identified along boundaries of park land adjoining private property (located in yellow on map opposite); Two sites were found on Crows Park and one on Swanson Stream Esplanade. Rubbish in the Crows Park site appears to include construction waste (broken concrete, rebar) and tyres. Rubbish in the Swanson Stream Esplanade site is from private land above the reserve and appears to include tyres. Some rubbish has slid into the reserve. Overhanging banks on the Swanson Stream Esplanade site indicate more slips are possible - contractors working in this area have been advised to take care and avoid unsafe areas.

These sites do not appear to be part of any legal closed landfill Auckland Council or a legacy Territorial Authority operated or authorized. It is possible the three sites form part of a contiguous site. Previous illegal tyre dumping may have been found in on an adjoining private land title in this area.

Investigation would require delimitation and quantification (including of subsurface materials), including on private land.

Parks & Community Facilities staff do not have warrants / mandate to work on private land.

Compliance were advised.





# NOTIFICATIONS

## Community leasing and land-owner approvals

### Community Leasing

#### Community lease movements

- No community leasing movements to report for February (2023).

### Land Advisory

Land-owner applications received are assessed by Land Use Advisory and reviewed by Community Facilities staff. The board will be contacted for feedback in due course.

No landowner approval applications were received or approved during February (2023).

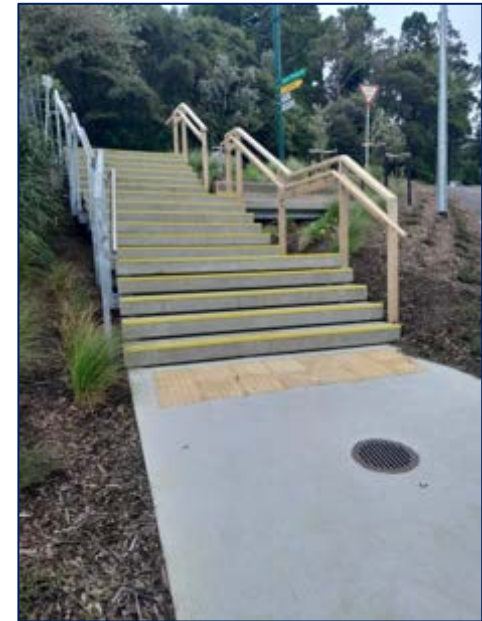


# PROJECT DELIVERY UPDATE

Assets being built, renewed or maintained

## Lopdell House Stairs

The Lopdell House Stairs are open for use by the public. There is currently a temporary handrail in place. Installation of the permanent handrail will commence next week with the installation of the pavers, and lighting following this. Replacement of the Atkinson Statue will commence once the paving is complete, and the granite plinth has been manufactured.



# PROJECT DELIVERY UPDATE

Assets being built, renewed or maintained

## Onedin Green - replace playground safety surface

The safety surface was replaced with brand new playmatta for the swings set. The new playmatta will ensure the swing safety surface is compliant and meets New Zealand Safety standards.

Before



After







# PROJECT DELIVERY UPDATE

Assets being built, renewed or maintained

## Kaurilands Domain – install & renew drainage by Kindergarten and renew interior water damaged flooring

The drainage around the Kindergarten has been an issue for some time and this has caused the moisture to rise causing damp issues in the interior. The front downpipe was relocated to the corner of the building and connected into new drainage which runs back of the building and connected into existing drainage. At this junction new drainage was installed under the building which was connected to existing cesspit in the car park.

The Kindergarten staff noticed the improvements immediately, with less to no water around the building. This has also prevented the damp from rising and in addition, new floorboards and carpet were installed.

Old Carpet



New Carpet



Downpipe removal



New downpipe installed





# PROJECT DELIVERY UPDATE

Assets being built, renewed or maintained

## Kauri Cascade – Double toilet block installation

The installation of two toilet blocks at Kauri Cascade (Cascade Falls) is nearing completion. The drinking fountains have been installed and footpaths completed. Work is underway to install timber edging and bark mulch around wastewater tanks as requested by Healthy Waters.

Next steps: Installation of new 20,000L non-potable tank for flushing toilets, the commissioning of the wastewater system and council consent sign-off followed by reinstatement of soil, mounds and grass seed.



Toilet 1



Toilet 2



Wastewater system - toilet 1



## FY 22/23 Work Programme Update

### Accessibility Mapping

- Draft accessible maps were workshopped with the local board in February 2023.
- Minor edits are to be made to the maps in March 2023.
- Maps are to be uploaded to the Auckland Council Find a Park Pages for each park in April 2023.
- No further decisions or workshops required on the project.

### Other Parks Matters

#### Te Henga Surf Lifesaving Building

Staff will work with the club on possible implications of their potential re-build on the wider park and park users, ensuring a strategic lens is applied and other issues are considered.

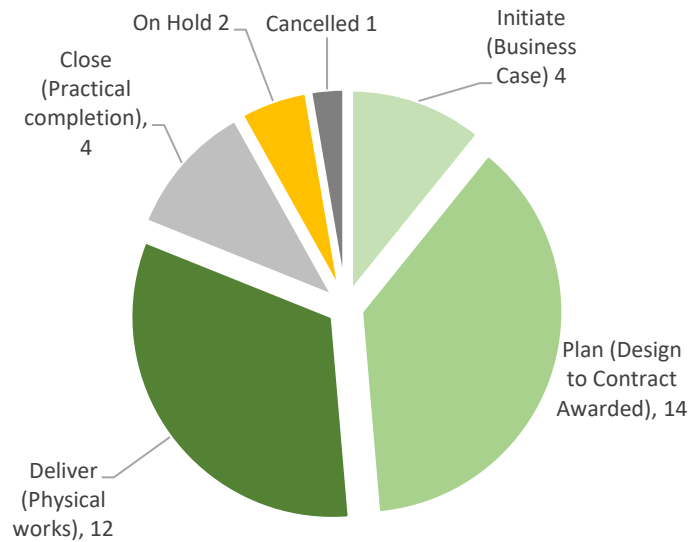


# NOTIFICATIONS PROJECT DELIVERY STATUS

## Project Delivery

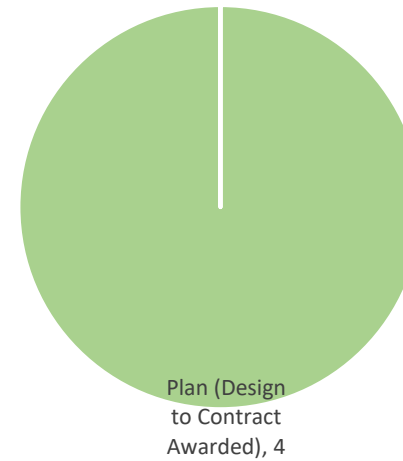
Waitākere Ranges Local Board - Project Status

Total Number of Projects - 37



Waitākere Ranges Local Board - Project Status

Total Number of LDI Projects - 4







# PROJECT DELIVERY

## Status and summary updates

				Initiate	Preliminary design	Detailed Design	Tender Process	Construction	Defects
				2022/2023 - Current year					
Activity Name	RAG	Local Board Commentary	Timeline	Q1	Q2	Q3	Q4		
Sunvue Park - develop cultural park features	Green - On Track	Current status: Detail design 75% complete Next steps: Mana Whenua consultation	Baseline						
Te Henga Park - refurbish gravel carpark & renew park barriers FY21/22	Green - On Track	Project completed August 2022.	Baseline						
Te Henga Park - renew/refurbish park assets	Green - On Track	Current status: Programme in physical works. Next steps: Complete physical works.	Baseline						
Titirangi Beach Reserve - renew boundary bollards	Green - On Track	Current status: Complete physical works. Next steps: Close out project.	Baseline						
Titirangi Town Centre - replace toilet block	Green - On Track	Current status: As built drawings issued Next steps: Complete final snag list items and final claim	Baseline						
Titirangi War Memorial Hall & Library - refurbish exterior of building	Green - On Track	Current status: Heritage architect engaged Next steps: commence refurbishment detailed design and consenting package.	Baseline						
Titirangi War Memorial Park - renew amenity lighting	Amber - At Risk	Project is on hold. Funding has been deferred to financial year 2023/2024.	Baseline						
Waiatarua Hall - replace exterior fire exit stairs	Green - On Track	Current status: Design work is currently being undertaken. Next steps: Review design work.	Baseline						
Waitakere Ranges - renew community facility and park signage	Green - On Track	Current status: Awaiting formal gifting of Te Reo park and facility names, as a part of Te Kete Rukuruku. Next steps: Prepare tender documents and go to market for pricing.	Baseline						
Waitakere Ranges - renew park fixtures and furniture FY23-FY24	Green - On Track	Current status: Programme in physical works. Next steps: Complete physical works.	Baseline						
Waitakere Ranges - renew park structures FY23/24-FY25/26	Green - On Track	Project on hold. Project not yet ready for delivery.	Baseline						
Waitakere Ranges - renew park walkways & paths FY22-FY24	Green - On Track	Current status: Repricing physical works contract to more specialised supplier, to meet budget for physical works. Next steps: Start Physical works procurement in March 2023.	Baseline						
Waitakere Ranges – renew park/facility security systems & lighting FY22/23	Green - On Track	Current status: Prepare tender documents. Next steps: Award physical works project.	Baseline						
Waitakere Ranges - renew retaining walls FY21/22	Green - On Track	Project completed December 2022.	Baseline						
Waitakere Ranges Greenways Plan - investigate and construct Route G8 c/d	Green - On Track	Current status: Public consultation complete. Next steps: Workshop with Local board in March or April 2023 and seek advise on the way forward.	Baseline						
Waitakere Ranges Greenways Plan - investigate G2 priority route Koroī / Clayburn Res to Rangeview Rd	Green - On Track	Current status: Feasibility investigation is now 100% completed and the reports have been submitted to Auckland council. Memo is being prepared Next steps: Workshop with Local board in March or April 2023 and seek advise on the way forward.	Baseline						
Waitakere Ranges Greenways Plan - investigate Route G1	Green - On Track	Current status: Feasibility investigation is now 100% completed and the reports have been submitted to Auckland council Next steps: workshop with the local board and seek advise on the way forward	Baseline						



# PROJECT DELIVERY

## Status and summary updates

				Initiate	Preliminary design	Detailed Design	Tender Process	Construction	Defects		
				2022/2023 - Current year				Q1	Q2	Q3	Q4
Activity Name	RAG	Local Board Commentary	Timeline								
Waitakere Ranges Greenways Plan - investigate Route G7	Green - On Track	Current status: Feasibility investigation is now 100% completed and the reports have been submitted to Auckland council Next steps: Workshop with Local board in March or April 2023 and seek advise on the way forward.	Baseline								



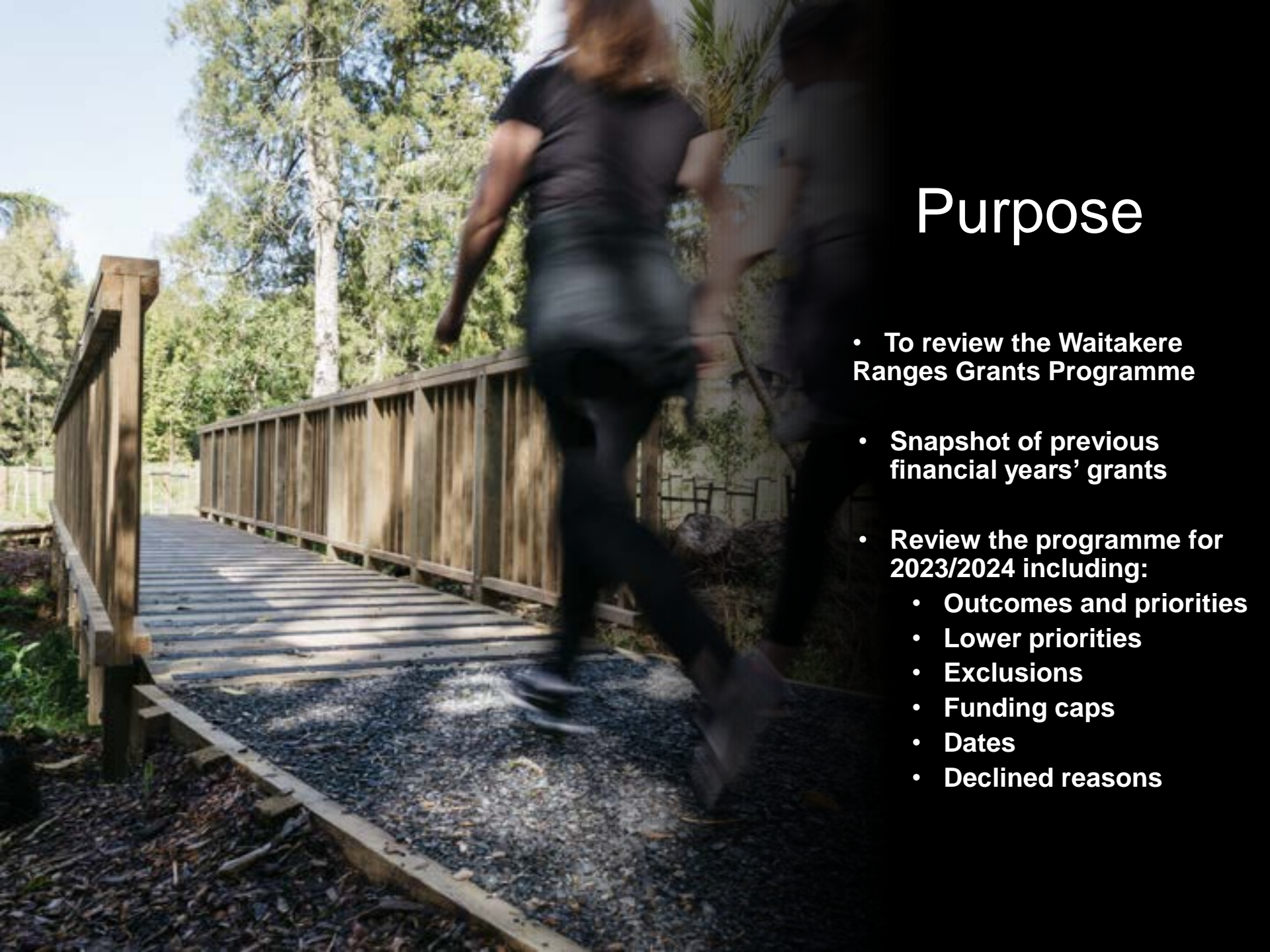
# 2023/2024 Waitakere Ranges Grants Programme Review

---

Vincent Marshall – grants  
advisor







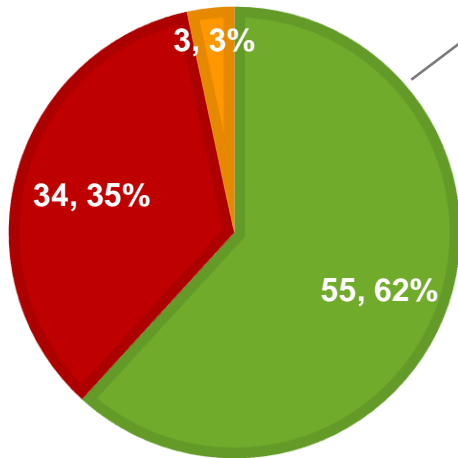
# Purpose

- **To review the Waitakere Ranges Grants Programme**
- **Snapshot of previous financial years' grants**
- **Review the programme for 2023/2024 including:**
  - **Outcomes and priorities**
  - **Lower priorities**
  - **Exclusions**
  - **Funding caps**
  - **Dates**
  - **Declined reasons**

# Volume and Approval Rate Overview

## 2020/2021 89 TOTAL APPLICATIONS

■ Approved ■ Declined ■ Withdrawn



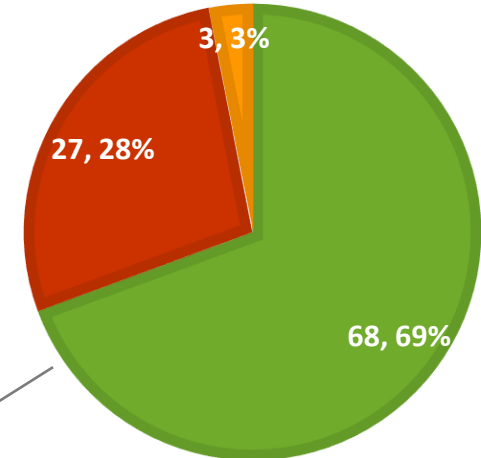
34 applications are from the **Local Grant rounds**

32 applications are from the **Quick Response rounds**

23 applications are from the **Multi-Board rounds**

## 2021/2022 98 TOTAL APPLICATIONS

■ Approved ■ Declined ■ Withdrawn

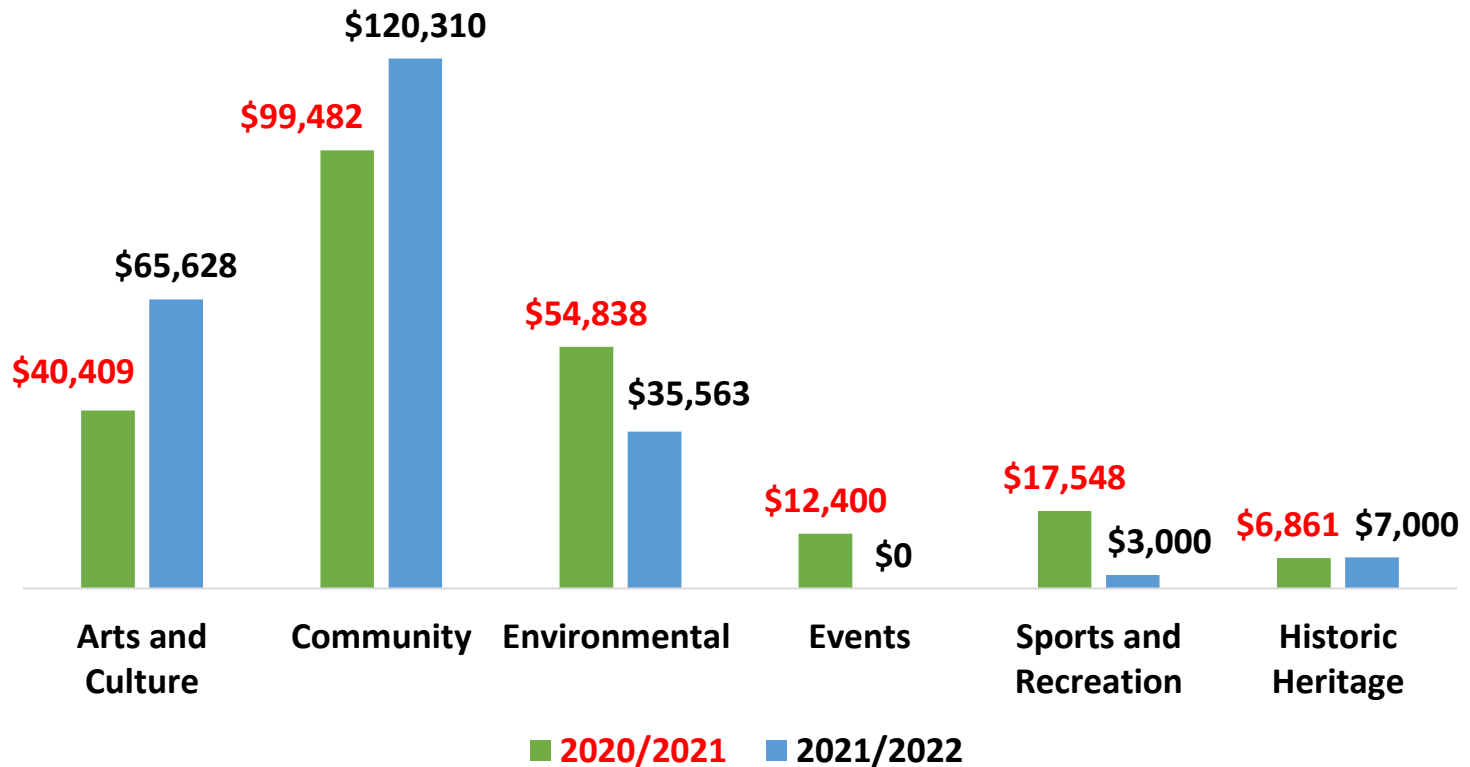


28 applications are from the **Local Grant rounds**

40 applications are from the **Quick Response rounds**

30 applications are from the **Multi-Board rounds**

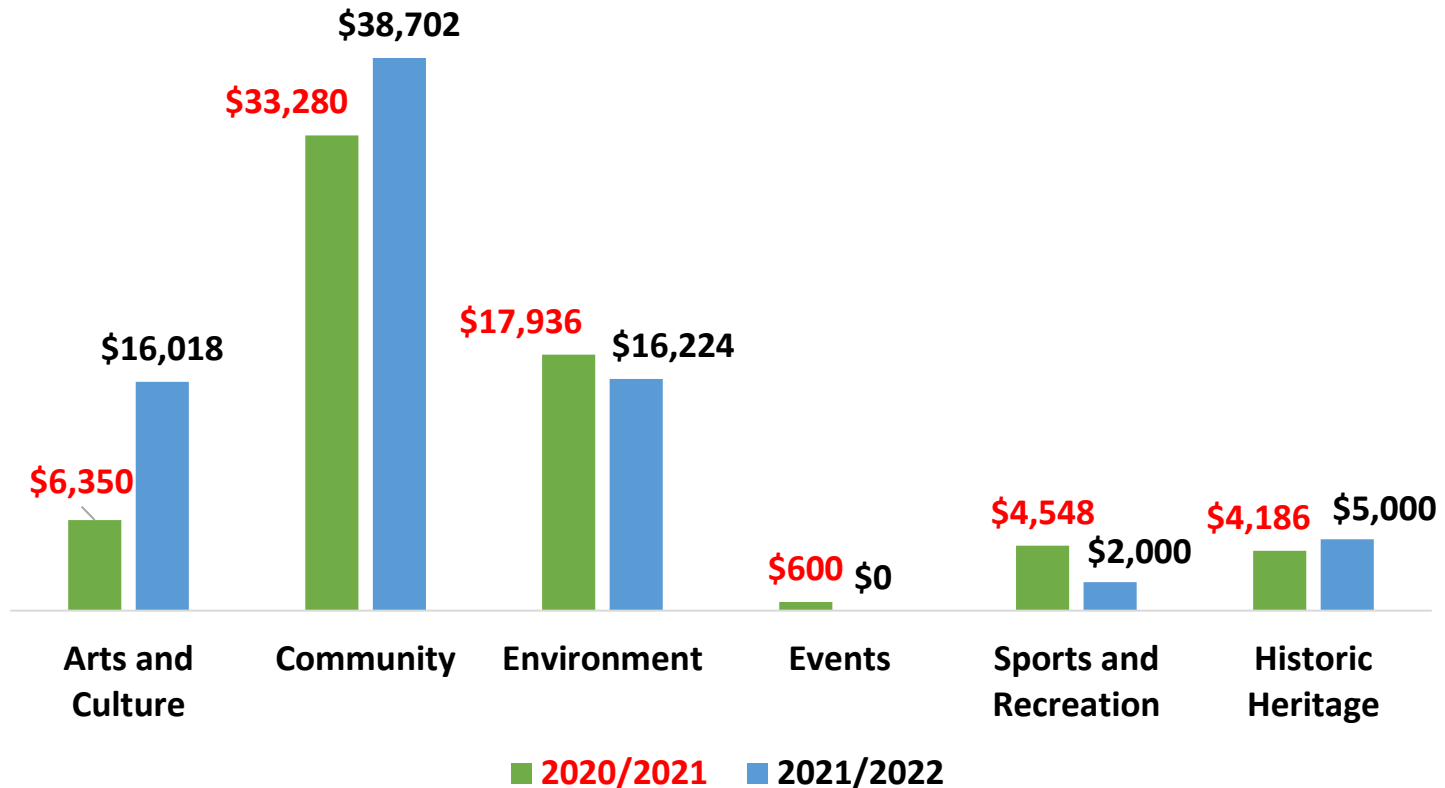
## Local and Quick Response Grant Requests



Total Requests 2020/2021 & 2021/2022: \$231,538 // \$231,501

0.02% decrease in the amount requested from 2020/2021 to 2021/2022

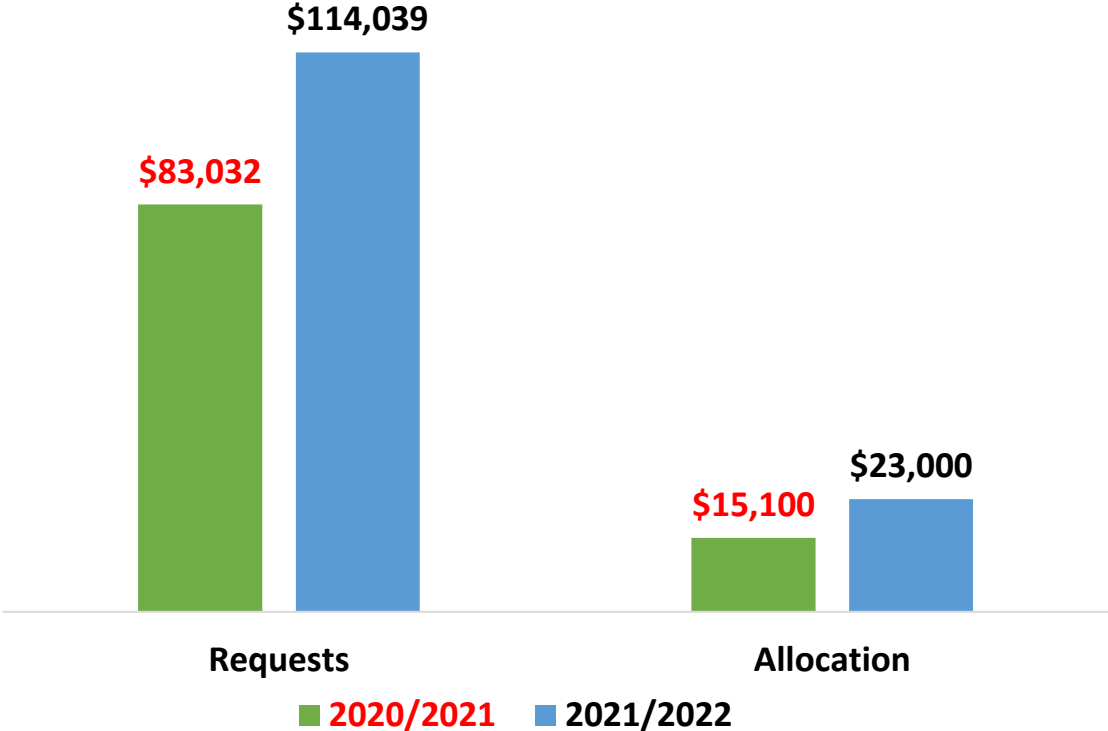
# Local and Quick Response Grant Allocations



Total allocations 2020/2021 & 2021/2022: \$66,900 // \$77,944

**14.7%** increase in the amount allocated from 2020/2021 to 2021/2022

# Multiboard Grant Requests and Allocations comparison



**37.3%** increase in the amount requested from 2020/2021 to 2021/2022

**52.3%** increase in the amount allocated from 2020/2021 to 2021/2022

# Top 10 applications for 2021/2022

Application No.	Applicant	Project	Amount Allocated
LG2219-217	New Zealand Bird Rescue Charitable Trust	Towards the delivery of a catastrophic weather event impacting wildlife tabletop exercise at the Trust Arena (June 2022 - September 2022)	\$4,000.00
LG2219-205	Glen Eden Community & Recreational Centre	Towards privacy film and window treatment at the Glen Eden Community Recreational Centre (June 2022 - September 2022)	\$3,000.00
LG2219-122	Matuku Reserve Trust Board	Towards materials for weed control of invasive pest plants in Te Henga Wetland	\$3,000.00
LG2219-109	Matuku Te Kura Kaupapa Maori o Hoani Marae	Towards accommodation and travel costs for tutors, parent helpers, and performers who are representing West Auckland in the National Mana Kura Tuatahi Kapa Haka Competition in Nelson	\$3,000.00
LG2219-212	Wayne Mackenzie under the umbrella of Laingholm & District Citizens Association 1998 Inc	Towards cost of printed local history books of the Laingholm and Parau districts (project duration July 2022 to April 2023)	\$3,000.00
LG2219-104	SCOW	Towards lures and gas cylinders as well as seven days contractor's time to maintain pest control lines in Cornwallis Peninsula	\$2,520.00
LG2219-206	Playhouse Theatre Incorporated	Towards venue hire of Playhouse Theatre for the theatre production of Peter Pan Junior in June 2022	\$2,000.00
LG2219-103	Waitakere Rivercare Group	Towards equipment for the extension of the nursery in Matuku Link Reserve	\$2,000.00
LG2219-113	Glen Eden Community House	Towards upgrade of their table in Glen Eden Community House	\$1,500.00
LG2219-215	Greater Glen Eden	Towards morning tea and Christmas hampers for the elderly in Glen Eden Villages - Westview and Harmony (November 2022 - December 2022)	\$1,500.00



New Zealand Bird Rescue Charitable Trust,  
***Building community preparedness for a catastrophic weather event impacting wildlife***

**\$4,000.00**  
allocated  
towards  
delivery costs

**Date:**  
13/10/2022-  
18/10/22

**Location: The  
Trusts Arena**

**90 Participants  
Reached**

## Tabletop Exercise



**Building community preparedness  
for a catastrophic weather event  
impacting wildlife**



## Tabletop exercise was a success

Wildlife Welfare – Creating Preparedness for a Potential Catastrophic Weather Event. Wildlife welfare is now incorporated in the Civil Defence 'Coordinated Incident Management System (CIMS)'. BirdCare Aotearoa recently coordinated a Tabletop exercise to build preparedness for a catastrophic weather event impacting wildlife. Delegates from various organisations worked together during a simulated exercise to develop a ...

[Read more](#)



## Waitakere Rivercare Group, *Nurturing Natives*



\$2,000 approved towards equipment for the extension of the nursery in Matuku Link Reserve

Date: 01/01/2022 - 31/10/2022

Location: Matuku Link Reserve



200 participants reached





Playhouse Theatre Incorporated,  
*Peter Pan Junior*

\$2,000 approved towards venue hire of  
Playhouse Theatre for the theatre  
production of Peter Pan Junior in June 2022

Date: 15/10/2022-29/10/2022

Location: Glen Eden Playhouse Theatre

1,695 participants reached



Mountains to Sea  
Conservation Trust,  
*Waitākere Kayak  
Days*

\$1,000 approved towards kayak hire and operating costs  
to run two free kayak events in Waitākere Kayak Days

Date: 20/02/2022

Location: Cornwallis & Parau Bay

53 participants reached

# Waitakere Ranges Local Board Plan 2020 Outcomes



The Waitākere Ranges Heritage Area is protected and enhanced and connections with surrounding communities are strengthened



We work closely with mataawaka and mana whenua partners



We work to respect, protect and restore the environment



Our communities are resilient and strong



Our communities experience wellbeing, belonging and participation



People have a range of opportunities to experience arts, culture and heritage



We have infrastructure and facilities which support and enhance our neighbourhoods and town centres

# Outcomes



The Waitākere Ranges Heritage Area is protected and enhanced, and connections with surrounding communities are strengthened

- Deliver a range of local activities across all local board plan outcomes that help deliver on the objectives of the Waitākere Ranges Heritage Area Act 2008
- Protect and enhance the area's heritage features



We work closely with mataawaka and mana whenua partners

- Support local projects and activities that contribute towards Māori educational, cultural, leadership, and employment outcomes



We work to respect, protect and restore the environment

- Fund community co-ordination for environmental activities
- Make small grants to local groups for projects and actions which have a positive effect on the local environment
- Support and deliver projects, programmes and activities that address stream and coastal erosion, water quality, weed and animal pest management, environmental programmes, education, and biodiversity (rural or urban)

# Outcomes



Our communities are resilient and strong

- Support community-led food initiatives such as community gardens, learning to grow or prepare food, reducing packaging and food waste and sharing produce
- Make small grants to local groups for projects or actions which will have a positive impact on community resilience
- Support community-led household budgeting and financial literacy actions



Our communities experience wellbeing, belonging and participation

- Assist local communities to grow their organisational skills and capacity with neighbourhood development expertise, community-based training programmes, and placemaking resources
- Support a breadth of projects and activities to ensure funding allocations reflect our wide range of communities, including Māori, Pasifika, and other social and ethnic groups
- Explore new ways for people to connect with us and each other, such as neighbourhood forums or promoting use of social media



People have a range of opportunities to experience arts, culture and heritage

- Access to a range of arts experiences
- Access to a range of community activities and events
- Recognition of local historic and cultural heritage

## Higher Priorities

- Events that are smokefree (incl vaping) and provide healthy food for events and projects
- Events that encourage waste minimisation and endorse zero waste practices
- Events that foster increased resilience, connectedness, and wellbeing in our communities and environment
- Projects that protect and enhance our natural environment and wildlife
- Community Match Fund (groups who demonstrate that 40% of project costs have already been met)
- Applicants who have considered other sources of funding

## Lower Priorities

- Operational costs and wages and salaries with the exception of fees for professional and specialised services.
- applications where the applicant has considerable cash reserves, relative to the amount applied for, unless the applicant can verify that the reserves are required or tagged for a specific project
- groups and/or activities taking place outside the local board area, unless the applicant can clearly demonstrate the benefit to local board members.
- Groups who have received any alternative local board funding in the current financial year

**Green – new  
priority**

# Lower priorities continued..

---

- Catering unless there is strong evidence of community benefit
- Travel and accommodation outside of the Waitakere Ranges, unless strong benefit to the community is demonstrated



# Exclusions

- Events that promote a brand or company advertising alcohol or fast food, particularly if the event has children and young people participating
- Applicants that have failed to meet previous accountability obligations, except on the condition that the outstanding accountability is completed prior to payment
- Applicants who have successfully received two Waitakere Ranges local board grants during the current financial year



# Repeat applicants from 2020/2021 – 2022/2023 YTD

Group name	Number of applications across 2020/2021 - 2022/2023 YTD	Total amount awarded
Piha Surf Life Saving Club	7	\$18,668.44
Matuku Reserve Trust	4	\$9,800.00
Playhouse Theatre inc	4	\$7,000.00
Youthline	6	\$6,250.00
West Auckland Community Toy Library	4	\$5,080.21

# Funding Caps

- **\$6,000** max limit
- Applicant becomes ineligible once awarded **\$6,000** or **2** successful grants
- Reducing funding commitments to groups who have received any alternative local board funding in the current financial year (ABS, LDI opex etc)

## Recommendation:

Grants scheme	Maximum amount per application
Quick Response	\$500 - \$1,500
Local and Multi-Board Grants	\$1,500 - \$6,000

Investment approach – suggested changes in green

- Do you want to change the monetary thresholds for local grants and quick response rounds?

# Proposed dates for 2023/2024

**Do we wish to cut any quick response rounds?**

Type of Grant	Round	Open	Close	Decision	Project to Occur After
Quick Response	1	Mon, 11 Sep 23	Fri, 13 Oct 23	Thu, 23 Nov 23	Fri, 01 Dec 23
Local Grant and Multi-Board	1	Mon, 3 July 23	Fri, 18 Aug 23	Thu, 28 Sep 23	Wed, 01 Nov 23
Local Grant and Multi-Board	2	Mon, 15 Jan 24	Fri, 23 Feb 24	Thu, 28 Mar 24	Mon, 01 Apr 24
Quick Response	2	Mon, 22 Apr 24	Fri, 24 May 24	Thu, 27 Jun 24	Mon, 01 July 24

# Decline reasons

- **Does not align with local board priorities:** There is a low alignment with the local board's priorities and/or community outcome(s)
- **Grant round oversubscribed:** Limited funding
- **Central government funding role / Other funding sources available**
- **Application insufficiently developed:** The project is not fully defined or develop; applicant may be invited to apply to a future grant round
- **Limited community benefit(s):** Insufficient evidence of specific benefits to the community
- **Project outside of Local Board area:** Project not benefiting Local Board area directly
- **Not eligible:** Applicant or project not eligible under the terms of the Community Grants Policy 2014 or the local board grants programme

# Thank you!!!

A big thank you to our sponsor

Waitākere Ranges  
Local Board  
Auckland Council

Their support has enabled us to install heat pumps at Titirangi Plunket Clinic.



PLAYHOUSE THEATRE INC PRESENTS THE 2021-22 SEASON OF

## WIZARD OF OZ

**Thanks:**

laelsolutions  
Prospect School  
MASH design  
CUSTOMARY STEEL LTD  
BARICH  
Waitākere Ranges Local Board

PLAYHOUSE THEATRE, GLEN EDEN 17 - 24 JULY 2021  
BOOK TICKETS AT PLAYHOUSETHEATREINC.COM

**A PLACE FOR THE WHOLE WHANAU!**

# FUN FREE WHANĀU SESSIONS

**EVERY TUESDAY! FREE!**

5.30-6.30pm

Dance, Group fit, kidszone

PARRS PARK - (Oratia Football Clubrooms)  
(10th May - 12th July 2022)

SPORT WAITĀKERE  
SaintZ  
Waitākere Ranges Local Board

## Friends of Whatipū

150<sup>th</sup> Celebration of Gibbons Homestead  
Saturday 22<sup>nd</sup> May 2021

Kindly supported by the Waitakere Local Board



# Waitākere Ranges Local Board: play opportunities



Jacquelyn Collins, Play Advocacy Advisor  
16 March 2023



# Introductory workshop agenda

- Embracing adventurous play
- Community-led play
- Play streets
- Te Kete Rukuruku
- Advocating for play
- Enabling play in public spaces
- Strategic partners and local play champions
- Local board comms and social media
- Next steps





# Embracing adventurous play

- Supporting WRLB's emphasis on nature play in local and regional park
- Promoting and celebrating natural spaces as play spaces for tamariki and rangatahi
- Climbing trees, building huts, sliding down hills...
- Pilot: Nature Play for Adventurers
- Work in progress: addressing risk assessment and H&S
- Work in progress: challenging Sport NZ to jointly develop a comms strategy – aim to shift public attitudes to adventurous play



# Community-led play

- Taking an enabling approach to community-led play
- Perfect example: mown pump track in North Piha
- What are your comfort levels about this type of DIY play?
- How open would WRLB residents be to this kind of approach?



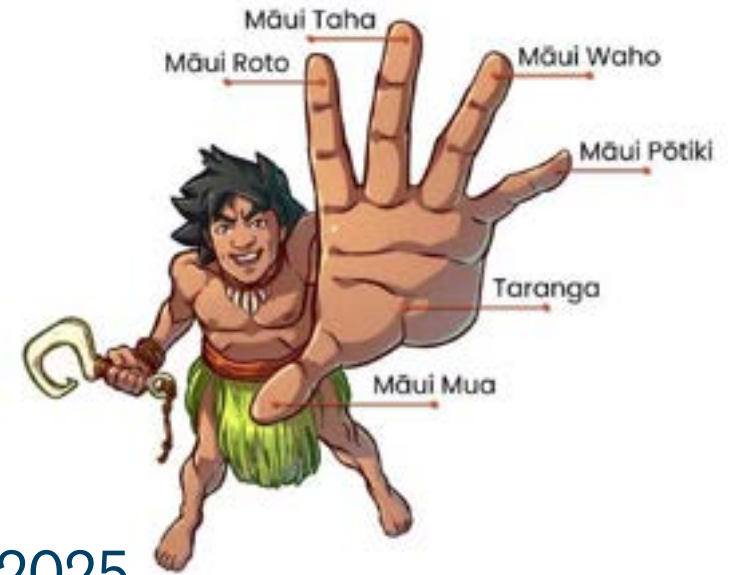
# Play streets

- Benefits
  - Time/space/opportunity to play
  - Community cohesion
- Concept tested successfully in 2021 pilot project
- Waka Kotahi guidelines developed to support the mahi
- April 2022: PACE Committee mandate to work with AT and develop permanent play streets guidance



# Māori values and play

- Decolonising play
- Māori Voices of Play insight report
- Kia Hīanga – Sport NZ Ihi Aotearoa Play Plan 2022-2025
- Te Kete Rukuruku – sharing cultural narratives through play
- Mana whenua and mātāwaka engagement
- Māra hūpara, traditional Māori games (kī-o-rahi, poi toa, manu tukutuku...)



# Advocating for play

- Applying a play lens to planned projects
- Experiencing spaces / activities from a tamariki perspective
- Advocating with CCOs and other organisations
  - Auckland Transport – play streets
  - Kāinga Ora
  - Who else?



# Enabling play in public spaces

Playful =



Playable =



# Strategic partners and local play champions

- Sport Waitākere: play lead
- Neighbourhood Play System approach
  - Tamariki at the centre of the mahi
  - Identifying potential play opportunities
  - Identifying local barriers to play
- Who else is active in play at a local level?



# Local Board comms and social media

- Local play audit
  - Playground provision
  - Out and About Auckland
  - Library-based play activities
  - Local board grants and funding
- Highlighting local play opportunities
- Promoting new ways to play





# Next steps

- Local Board Play Advisory Group – any volunteers?
- Elected members to discuss appetite and capacity for further play advocacy kōrero
- Development of WRLB play plan
- Development of Local Board Play Advisory Group Terms of Reference

