

Waitākere Ranges Local Board Workshop Record

Workshop record of the Waitākere Ranges Local Board held at the Waitākere Ranges Local Board office, 39 Glenmall Place, Glen Eden, Auckland on Thursday, 22 February 2024, commencing at 9.45am.

PRESENT

Chairperson: Greg Presland
Members: Michelle Clayton
Mark Allen
Linda Potauaine
Liz Manley
Sandra Coney

Apologies:

Also present: Adam Milina, Brett Lane, Natasha Yapp, Nataly Anchicoque and Rebecca Winham

Workshop Item	Summary of Discussions
Update on user analysis at Te Henga/Bethells Beach over summer period Thomas Dixon, Principal Parks Advisor Brad Congdon, Parks & Places Specialist 9.45am – 10.30am	Board members updated on user analysis undertaken at Bethells/Te Henga over 3 days to present an initial walk-through of process, examples of information collated and next steps.

The workshop concluded at 10.30am.

WAITĀKERE RANGES LOCAL BOARD

Update on User Analysis for Bethells/Te Henga

February 2024

Brad Congdon, Parks & Places Specialist

Thursday 22nd February 2024



Purpose of Update

- Provide the Local Board with an update following AC Parks observational studies at Te Henga/Bethells
- Outline and seek feedback on next steps

Survey Process Overview

- Drone flights & 360 photos – 3 per day
 - Intercept surveys
 - Observation studies
-
- Saturday 30 December 2023
 - Sunday 14 January 2024
 - Monday 29 January 2024 (Auckland Anniversary Day)



Saturday 30th December 2023



9.30am

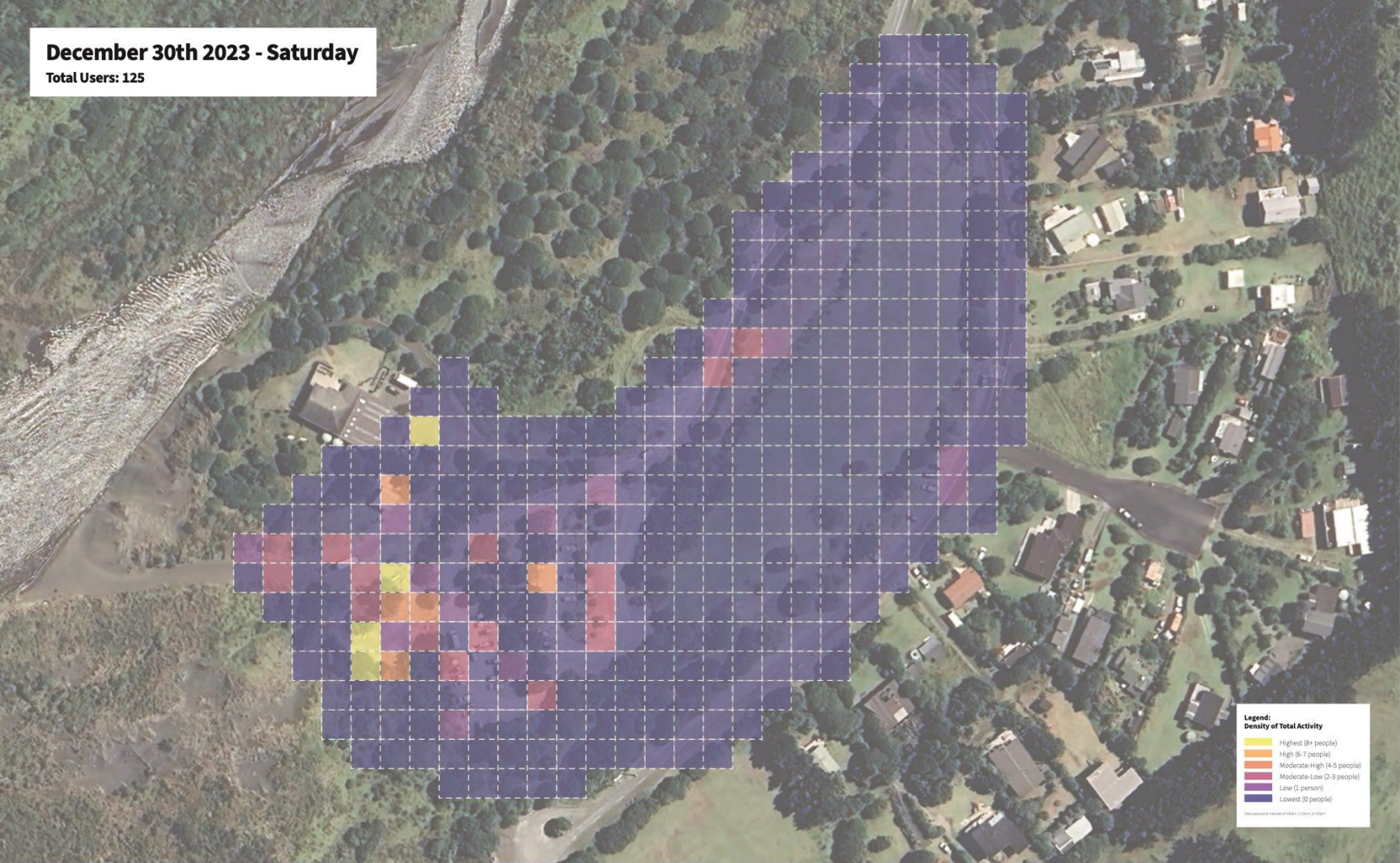


12.30pm



3.30pm

Heat Map



Observational Studies



Intercept Survey Sample Analysis



Most visits come from West Auckland

- 92% of respondents lived in Auckland, with 77% residing in Auckland West.



Most visit in groups of 2-4 people

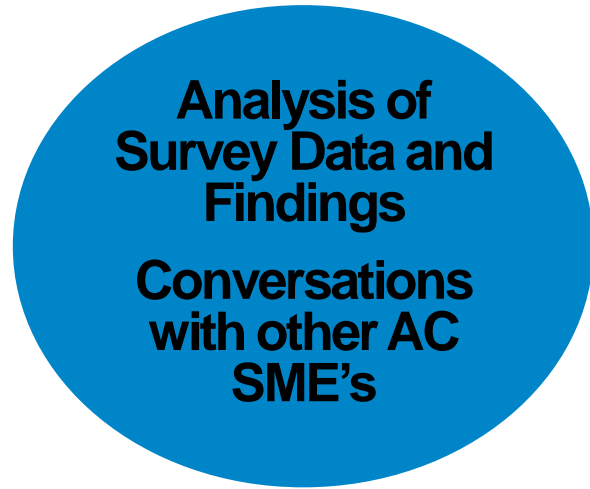
- 79% visited Te Henga/Bethells Beach in groups of 2-4, while 11% visited alone.



Visitors come to spend time with family and friends

- Top reasons for visiting included spending time with friends/family (49%), beach walking (43%), and swimming (31%).

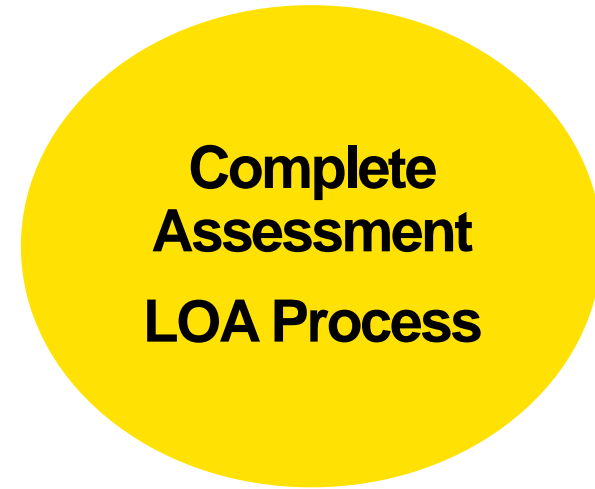
Next Steps



February/March 2024



March/April 2024



Through 2024