

Whangaparaoa Library Courtyard Refurbishment

Request for information regarding the Whangaparaoa Library courtyard refurbishment, in particular:

- **a copy of any design plans that may be available**
- **a project timeline**
- **cost, if it is available.**

The project will take approximately 3.5 months to complete, aiming to be completed by end of December 2019. The total allocated budget is \$204,536.00.

Design plans for the courtyard are attached.



KEY:

FURNITURE

- F01** PLANTER BOX - SMALL
- F02** PLANTER BOX - LARGE

PAVING

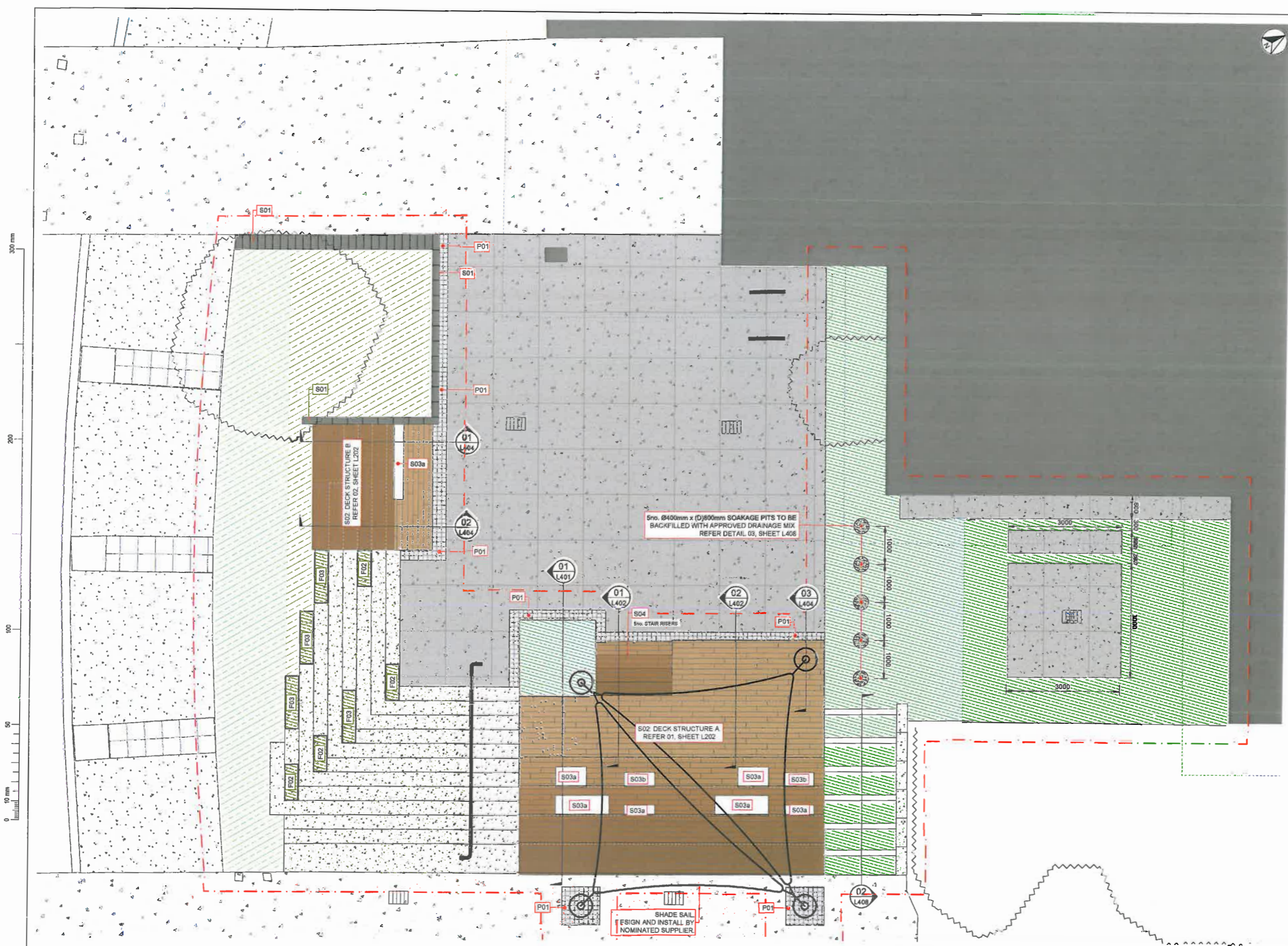
- P01** FIRTH HOLLAND MAKE UP STRIP
- P02** PAVEMENT REINSTATEMENT

STRUCTURE

- S01** MASONRY BLOCK WALL WITH TILES
- S02** TIMBER DECKING
- S03a** TIMBER SEAT BACK 55°
- S03b** TIMBER SEAT BACK 45°
- S03c** TIMBER SEAT BACK 35°
- S04** TIMBER STEPS
- S05** SHADE SAIL

PLANTING REFER L300 DRAWINGS

- AMENITY PLANTING**
Mulch: Waikato Fleck 7-16mm or approved similar
- AMENITY PLANTING**
Mulch: Forest Floor Mulch or approved similar



SHADE SAIL
DESIGN AND INSTALL BY
NOMINATED SUPPLIER

DRAFT FOR REVIEW

| Rev | Description | By | Date |
|-----|------------------|-----|------------|
| A | DRAFT FOR REVIEW | P.M | 07.12.2018 |



wsp OPUS
Auckland Environmental
PO Box 5848
Auckland 1141
New Zealand

AUCKLAND COUNCIL - HIBISCUS AND BAYS LOCAL BOARD
WHANGAPARAOA LIBRARY SQUARE UPGRADE
LANDSCAPE ARCHITECTURE DRAWING SET

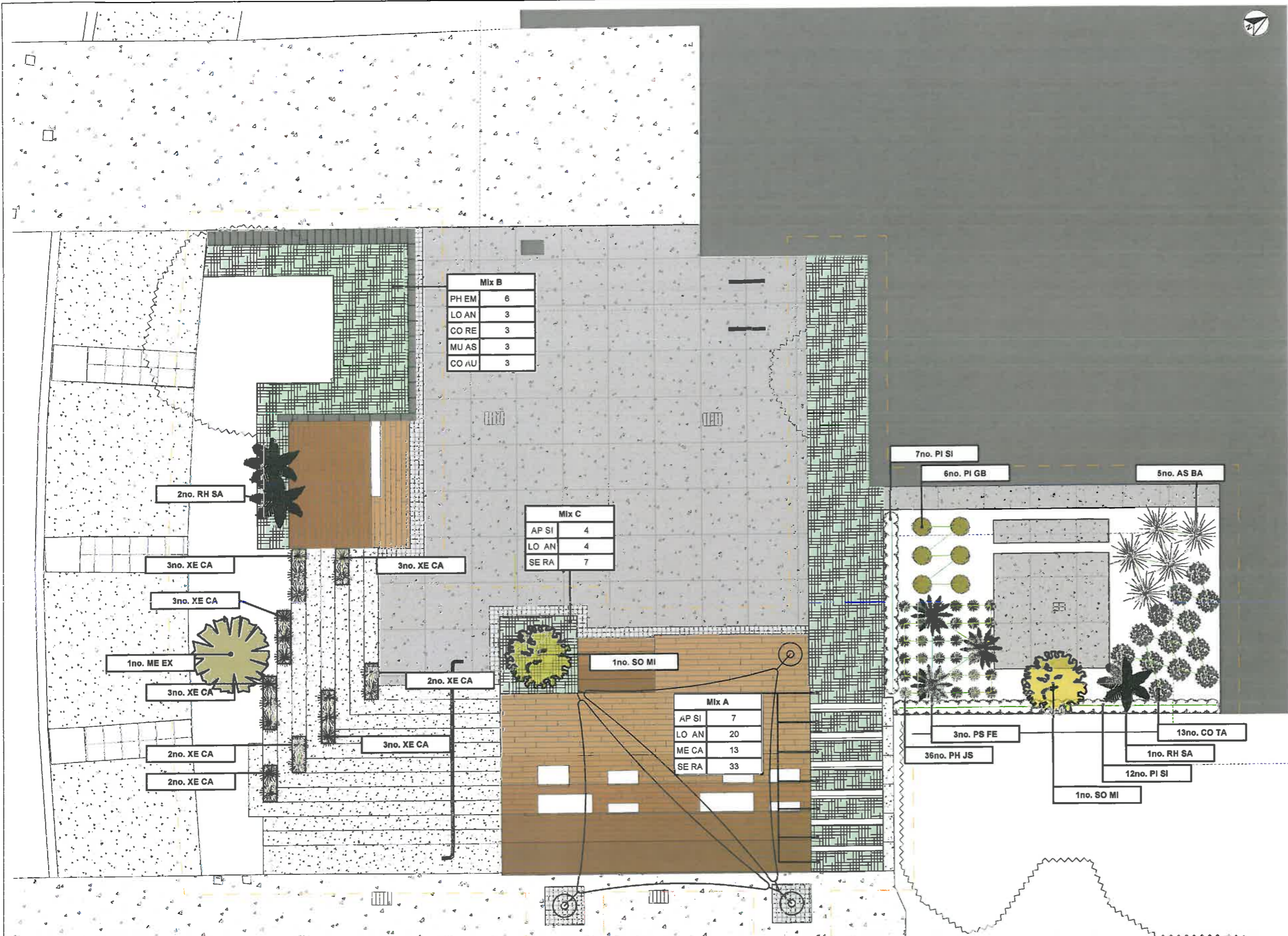
GENERAL ARRANGEMENT PLAN
SHEET 01 OF 02

| | | |
|----------|-----------------------|------------|
| P MURPHY | P MURPHY | 07.12.2018 |
| R COOPER | 1:50 (A1), 1:100 (A3) | 3-al289.00 |

| | |
|--------|------------|
| Scale | 3-al289.00 |
| Sheet | L201 |
| Author | A |

1:50 @ A1
1:100 @ A3

300 mm
200
100
50
0 10 mm



| | BOTANICAL NAME |
|-------|---|
| AP SI | <i>Apodasmia similis</i> |
| AS BA | <i>Astelia banksii</i> |
| CO TA | <i>Coprosma propinqua</i> 'Taiko' |
| CO RE | <i>Coprosma repens</i> 'Poor Knights' |
| CO AU | <i>Cordyline australis</i> |
| LO AN | <i>Lobelia angulata</i> |
| ME CA | <i>Metrosideros carminea</i> |
| ME EX | <i>Metrosideros excelsa</i> 'Maori Princess' |
| MU AS | <i>Muehlenbeckia astonii</i> |
| PH EM | <i>Phormium</i> 'Emerald Gem' |
| PH JS | <i>Phormium</i> 'Jack Spratt' |
| PI SI | <i>Pittosporum ralphii</i> 'Stephens Island' |
| PI GB | <i>Pittosporum tenuifolium</i> 'Golf ball' |
| PS FE | <i>Pseudopanax ferox</i> |
| RH SA | <i>Rhopalostylis sapida</i> var. <i>chatamica</i> |
| SE RA | <i>Selliera radicans</i> |
| SO MI | <i>Sophora microphylla</i> |
| XE CA | <i>Xeronema callistemon</i> |

DRAFT FOR REVIEW

150@A1
1:100@A3
0 10 20 30000 50000 70000 90000 m8000 mm

| | | | |
|---|------------------|-----|------------|
| A | DRAFT FOR REVIEW | P.M | 07.12.2018 |
| | | | |
| | | | |
| | | | |



OPUS
Auckland Environmental
+64 9 355 9500
PO Box 5848
Auckland 1141
New Zealand

| | | |
|----------|-----------------------|------------|
| Author | Designer | Checked |
| P MURPHY | P MURPHY | 07.12.2018 |
| Scale | 1:50 (A1), 1:100 (A3) | |

AUCKLAND COUNCIL - HIBISCUS AND BAYS LOCAL BOARD
WHANGAPARAOA LIBRARY SQUARE UPGRADE
LANDSCAPE ARCHITECTURE DRAWING SET

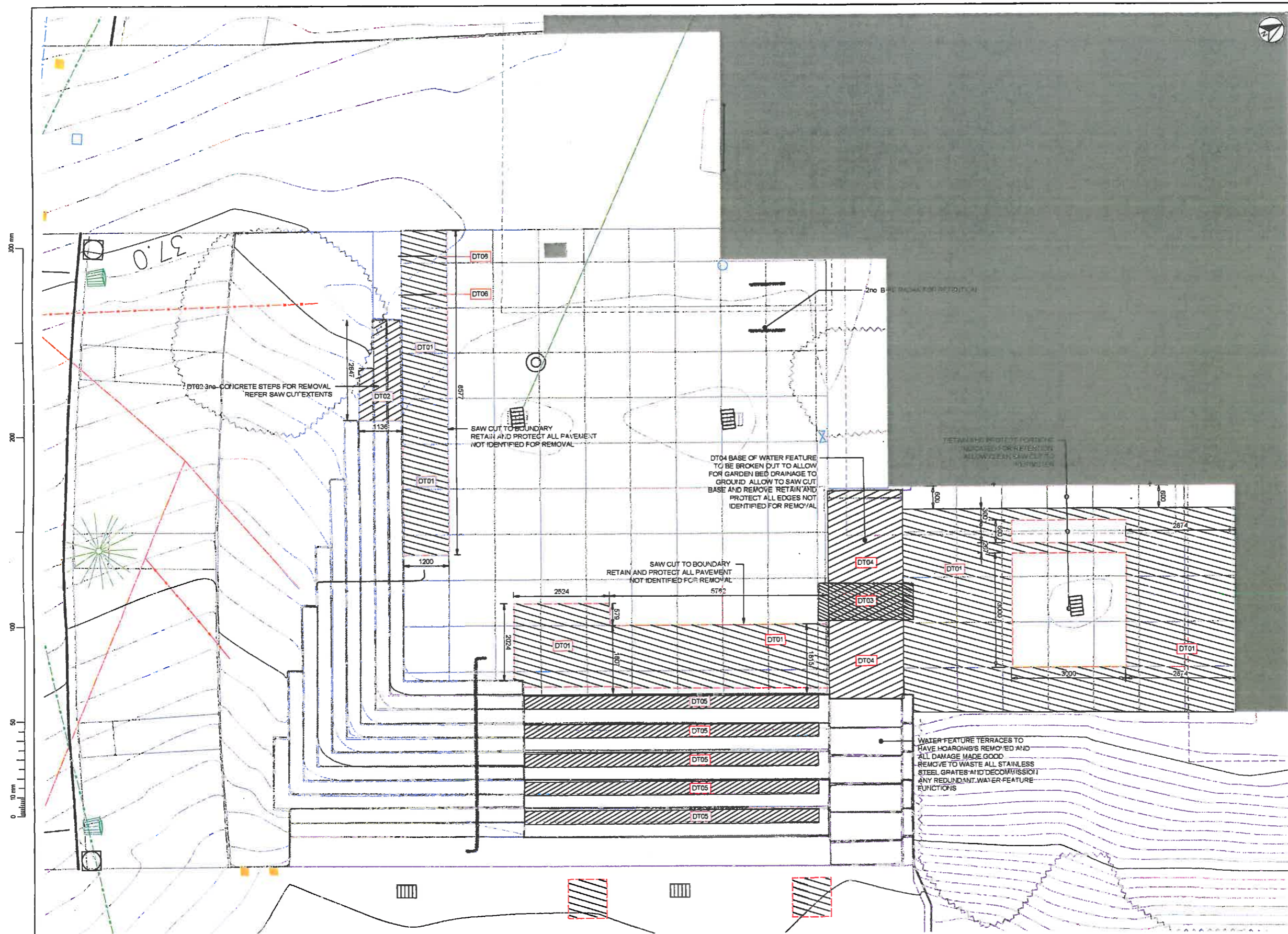
PLANTING PLAN
SHEET 01 OF 01

| | | | | | |
|-------|-------------|----------|------|------|---|
| Scale | 3-al/289.00 | Location | L301 | Page | A |
|-------|-------------|----------|------|------|---|



KEY:

- EXTENT OF WORKS BOUNDARY
- SAW CUTS
- DT01 CONCRETE PAVEMENT TO BE REMOVED
- DT02 CONCRETE TERRACES TO BE REMOVED
- DT03 TIMBER BRIDGE TO BE REMOVED
- DT04 IDENTIFIED PORTIONS OF WATER FEATURE TO BE REMOVED
- DT05 TIMBER SEATING TO BE REMOVED
- DT06 BIKE RAIL TO BE REMOVED



300 mm
200
100
50
0
10 mm

DRAFT FOR REVIEW

11 © A1
12 © A3
0 10 20 30 40 50 60 70 80 90 100 mm

| | | | |
|---|------------------|------|------------|
| A | DRAFT FOR REVIEW | P.M. | 07.12.2018 |
| | | | |
| | | | |
| | | | |
| | | | |
| | | | |



OPUS
Auckland Environmental
+24 9 355 9500

PO Box 5848
Auckland 1141
New Zealand

P. MURPHY
R. COOPER

P. MURPHY
1.00 (A1) 1.00 (A3)

77 12 2018

AUCKLAND COUNCIL - HIBISCUS AND BAYS LOCAL BOARD
WHANGAPARAOA LIBRARY SQUARE UPGRADE
LANDSCAPE ARCHITECTURE DRAWING SET

**DOWNTAKING PLAN
SHEET 01 OF 01**

3-a/289.00

L101 A